

3rd Issue of
1st magazine

Only known copy



1910

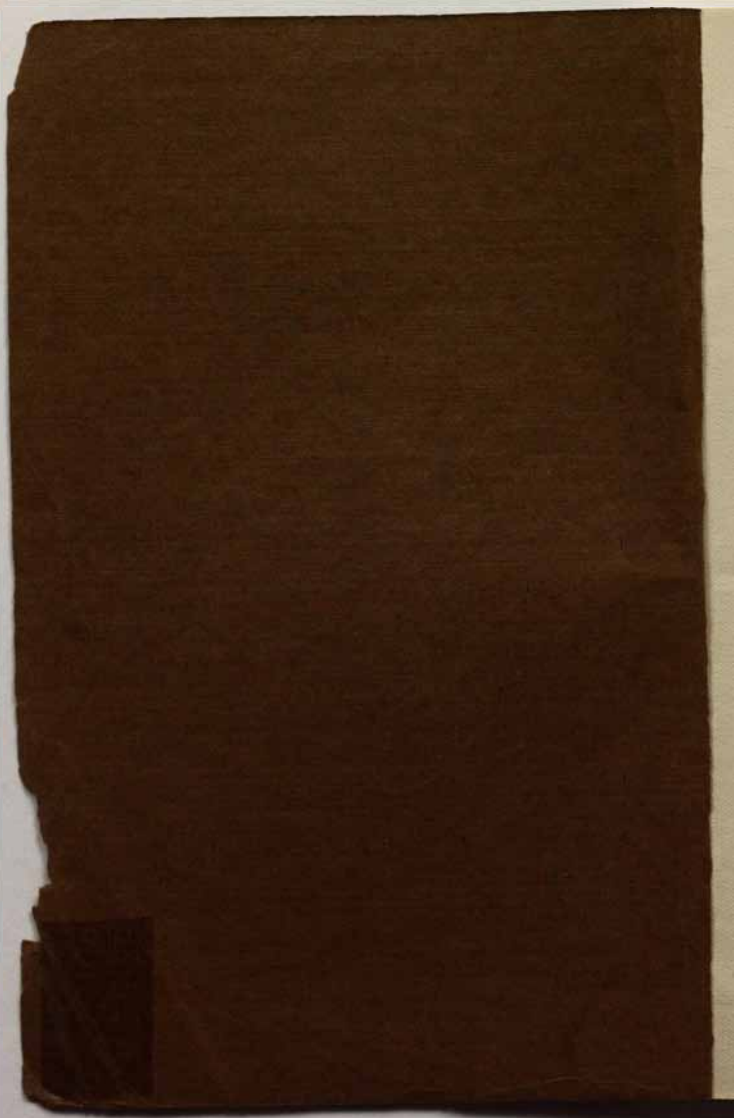
THE GEAR

— OF —

HAMMER AND TONGS



1910



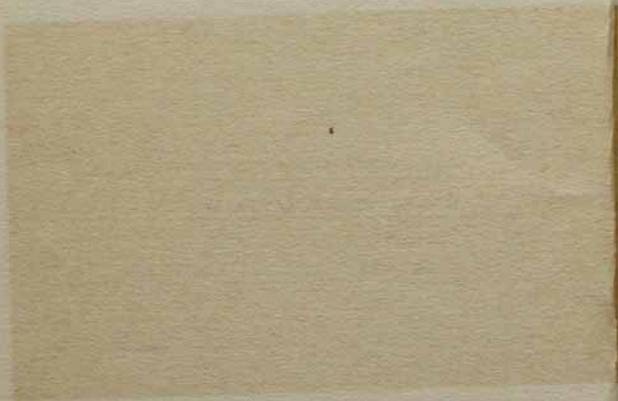
THE GEAR
OF
HAMMER AND TONGS

A CHRONICLE OF THE FRA-
TERNITY IN GENERAL

Harry S. Frank
"A"

Published Annually
Under the Direction of
BETA CHAPTER
MICHIGAN COLLEGE OF MINES
HOUGHTON, MICHIGAN

Faint, illegible text at the top of the page, possibly bleed-through from the reverse side.



Hammer and Tongs Fraternity

FOUNDED AT
UNIVERSITY OF MINNESOTA

JAN 1904

Please send to your chapter
\$1.00 Which is the price of this
year's Gear.

To B B Walling
313 4th St S.E.

BY

ERICK J. SCHRADER

EDWIN L. VINAL

W. MURRY LEWIS

ISAAC B. HANKS

THE UNIVERSITY OF CHICAGO

THE UNIVERSITY OF CHICAGO
LIBRARY
540 EAST 57TH STREET
CHICAGO, ILL. 60637

Hammer and Tongs Fraternity

FOUNDED AT

UNIVERSITY OF MINNESOTA

IN 1904

BY

ERICK J. SCHRADER

EDWIN L. VINAL

W. MURRY LEWIS

ISAAC B. HANKS

Vo

ste
pul
mo
ha
Al
rec

tha
wil
bes
TH
sen

hea
per

it e
TH
try

THE GEAR

OF HAMMER AND TONGS

VOLUME III

1910

INTRODUCTORY.

We feel that with this issue of the "GEAR" a great step has been taken towards placing it among the Fraternity publications of the country. Each year sees a larger and more complete number. The name, while not entirely new, has been changed. This was done at the suggestion of our Alumni Chapter and by the approval of Beta Chapter as recommended to her by the Editors.

By having an Associate Editor at each Chapter we feel that more interest will be taken by them. We hope that it will create competition to see which Chapter will have the best letter. Several new departments have been instituted. Through them the Brothers are requested to convey their sentiments in general for the good of the Fraternity.

The inserting of the Chapter pictures met with such hearty approval of all the Brothers that it has now become a permanent feature.

While our directory is more complete this year than it ever has been before, we feel that it is still far from perfect. The Brothers will confer a favor on the Editors if they will try to inform us of any change in residence.

H. H. Knoubler	P	3085	
14 H Wright			120 Water St. Detroit
Leach E. W.			
O. F. Woodrich			77 Spruce Place
W. H. M. & Ginn			
D. S. M. Pace			Stewart St
Minor J. D.		3022	Perfume Ave
W. F. Bosc		125	Cadieux St & York St
C. B. Smith			M. E. Potomac Hillside
W. W. Spring		7200	1st Ave S.
E. J. Vernal			New Bedford Mass
G. H. Wessel		3113	3rd Ave N. W. Minn.

A
B
G
S
C

EDITORIAL STAFF

Editor-in-Chief - - C. B. CAMERON

Assistant Editors

J. B. ARMITAGE H. M. TURNER

R. R. VANVALKENBURGH

Associate Editors

Alpha - - - - E. W. LEACH

Beta - - - T. J. WELCKER

Gamma - - - E. F. JONES

South-Western - - - J. E. THOMS

Chicago - - - H. H. HOPKINS, JR.

Al
Be
Ga
So
Ch

W. B. Atkinson
 J. C. Cobban - 811 Centre St
 Wellesbury, Pa
 M. E. Corley; Lake Mills, Minn
 L. B. Curtis; 548
 2706 Fremont Ave S.
 E. R. Edgerton, 431 So Huron St
 Sand Point
 P. B. Furber J. C. H. P. Turner
 806 Phoenix Bldg
 P. B. Hanks - 2636 Humphreys
 Ken Hauser 827 Mound Ave S.E.

J. B. ARMITAGE

H. M. TURNER

R. R. VANVALKENBURGH

Associate Editors

Alpha	-	-	-	-	E. W. LEACH
Beta	-	-	-	-	T. J. WELCKER
Gamma	-	-	-	-	E. F. JONES
South-Western	-	-	-	-	J. E. THOMS
Chicago	-	-	-	-	H. H. HOPKINS, JR.



THE ALPHA CHAPTER

Adams	Farnum	Sawyer	Kasper	Jones	Johnson
Sueve	Scott	Kingsley	Hauser	Curtis	Perry
Atkinson	Conley	Duncan	Leach	Timberly	McGinnes
		DuToit			Westbrook

THE ALPHA CHAPTER.

UNIVERSITY OF MINNESOTA

Dear Brothers:—

Once more we are presented with the pleasant opportunity of coming into a closer union with all the brothers of HAMMER AND TONGS through the medium of our annual chapter letters in the GEAR. We of Alpha take great pleasure in telling, as modestly as we can, of the steps forward we have taken during the year; and learning how our brothers of Gamma and Beta have fared since our last annual.

We wish to congratulate Beta on the splendid edition of the GEAR offered to the Fraternity last Spring, and we thank them for the time and industry used in getting out so *complete a chronicle of HAMMER AND TONGS activities during 1909.*

We feel that we can report for ourselves a successful and profitable year both individually as brothers in HAMMER AND TONGS and collectively as members of Alpha. Nearly one-half of the members on our chapter roll graduated at the close of last year and the responsibility of keeping Alpha in the position the Fraternity has occupied here at Minnesota, in point of scholarship and professional standing, devolved upon those of us who had been members of HAMMER AND TONGS for only a short time. However, we started the year with the avowed intention of making it the most successful in Alpha's history. While we are too modest to say that we have already fulfilled this intention we can say that the bonds of HAMMER AND TONGS are as strong as ever before.

The first event that we wish to chronicle is Brother Schrader's visit to the chapter last Spring. He came at a time when important matters regarding the future of HAMMER AND TONGS were being discussed and we owe a great deal to his presence and helpful advise at that time. We sincerely hope that Brother Schrader will be able to visit us again this Spring. Until we reach the time when we can hold national conventions nothing will be so conducive to the unity of HAMMER AND TONGS as such visits to all of the chapters

by one of the founders of our Fraternity. The news of Beta's project for a new home, which he made known to us on his return from there, stirred our enthusiasm and we determined that Alpha should some day be as fortunate as Beta.

As in preceding years we are holding our meetings at the various academic fraternity houses on the campus, this being made possible through those of our brothers who are members of those fraternities. An hour or two spent in good fellowship and cards, a business meeting followed by a talk on some engineering subject, and then something to satisfy the inner man,—that is the usual program. It may interest you to know of some of our activities during this year and we will, therefore, tell of a few of our meetings.

On March 11th, 1909, we held our spring rushing party at the Psi. U. house as guests of Brothers Torrance and Atkinson and entertained a very promising bunch of future engineers. Professor Cutler, Professor of Railroad Engineering, was present and told us of the trials and tribulations which come to one on Western railway location. The result of this meeting was the pledging of seven new men,—Brothers Kingsley, Sneve, Duncan, Scott, Perry, Conley and Jeone,—who were initiated two weeks later at the Delta Tau Delta house. April 14th we met at the Phi Gamma Delta house upon invitation of Brothers Sheffield and Starrett. After our regular meeting we listened to Brother Buck talk on "The Application of Steam Boilers to Smoke Prevention", a subject on which he has made special investigations. On May 7th Brother Buck entertained us at the Phi Psi house. The meeting was especially notable because of the presence of Brother Schrader. We enjoyed not only his genial personality and the message he brought us from the alumni and the other chapters, but also the box of very excellent Mexican cigars which he had in some way smuggled across the border.

On May 27th we held our last meeting of the year in the form of a banquet which was tendered by the underclassmen to the seniors about to graduate. At the risk of

being accused of plagiarism we will say that "it was indeed a notable occasion." Every senior had to speak and the gathering developed into a remarkable symposium of wit and humor. Still, underneath it all, there was a tinge of regret and sadness which came to the surface when we stopped to think that many of our brothers were singing the swan song of their college days and would soon be gone. A few days later examinations were over and we all, except the seniors who stayed for their coveted sheepskins, scattered to the four winds.

Everyone showed up again on time September 15th., rich as plutocrats (for the moment). We celebrated our return by a dinner at the Kaiserhof, where we recounted our experiences and planned for the year's work. On October 7th we made our debut for the year by entertaining a bunch of promising underclassmen at the Delta Tau Delta house with the Hauser brothers, Kingsley and McGinnis as hosts. The meeting was honored by the presence of Dean Francis Shenehon, of the Engineering College, who gave us a valuable and instructive talk on our ideals as men and as engineers. During the next two weeks we pledged Brothers Adams, Abbott, Farnam, Curtis, Kasper, Barnum, Johnson, Jones and Sawyer. We held initiation under Brother Westbrook's roof at the Chi Psi house at our next regular meeting. Brother Hill was taken in two weeks later. Brother Murray Lewis was with us at this meeting and gave us a very entertaining talk on his work in Mexico. Just recently we have had a second rushing party at the Delta Tau Delta house where we entertained about fifteen men whom we wished to look over. Prof. Zehner, our new professor of surveying and a Michigan '05 man, was over and gave a very entertaining description of his work in gauging the flow over Niagara Falls. We expect to elect a number of new men in the near future.

Although, being engineers, it is not seemly that we should be frivolous to any great degree, still the chapter thought that it was only right that our feminine friends be

not entirely deprived of our society. We, therefore, gave a dancing party at the Handicraft Guild on December 8th. Brother Timperley, who sees a great deal of the fair sex and should know how to please them, was put in charge and he "done fine."

Although engineers at Minnesota are advised not to indulge too much in college activities, still, on account of their scholarship, good fellowship and athletic ability, you can find a HAMMER AND TONGS man in almost any department of college activity where good men are wanted. Brothers Duncan, Conley and Wesbrook are Tau Beta Pi men. Brother Atkinson won his "M" again last Fall in the Wisconsin game. Brother Timperley represents the Engineering College on the Board of Governors of the Minnesota Union. Brother K. Hauser is Business Manager of the "Gopher." Brother Adams is an intercollegiate tennis champion. Si Sawyer stars as a basket-ball man. Brother Conley is President of the Engineer's Society, the highest student position in the Engineering College. Brother Wesbrook has been elected to Sigma Xi, and so on "ad infinitum", as one might say.

As regards matters affecting the chapter as a whole, probably the most important step taken by Alpha this spring was the adoption of a resolution providing for HAMMER AND TONGS headquarters on the campus next year. Plans are not definitely formulated as yet, but enough men will live together, and room enough will be procured so that the chapter can meet in its own rooms. Although, through the courtesy of the academic fraternity men in HAMMER AND TONGS, the chapter has never lacked a place to meet, still, if we are to progress, it is desirable that we have a home and ultimately own a house of our own near the campus. On account of the conditions here it will be impossible to achieve this latter result in one step, but we hope that another year or so will see us on a par with Beta in this respect.

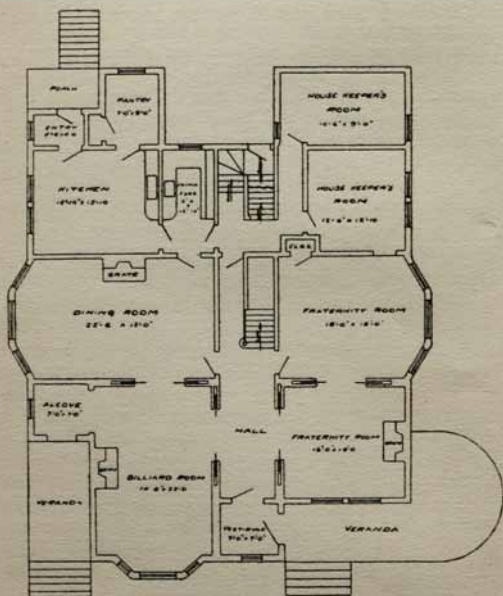
We have been glad to note the activity of our South-Western Alumni Association and have considered very care-

fully the recommendations they have made. They have the opportunity to prove themselves a unifying force in the development of HAMMER AND TONGS policy and we expect to hear from them as often as possible. Officially, we have not been notified of the formation of the new association at Chicago, but we hope to hear from them in the near future.

Beta deserves commendation for taking the lead in the matter of a new pin. We have had the same trouble here that the alumni mention and, though on sentimental grounds we would hold to the old design, from a practical standpoint we believe that a change is best, and should be made at this time if a suitable new pin can be agreed upon.

In conclusion, we wish to extend to Beta and Gamma and the alumni our thanks for the kindness we have experienced at their hands and our best wishes for another year of prosperity in the bonds of HAMMER AND TONGS.

ALPHA.



Beta Chapter Fraternity House
 PLAN OF GROUND FLOOR

THE BETA CHAPTER MICHIGAN COLLEGE OF MINES

Dear Brothers:—

It is with great pleasure that Beta undertakes the publishing of our third annual. The work has been made a pleasure by the great interest shown by Alpha and Gamma along with all the Alumni. Nothing could awaken the bonds of fraternal friendship and feeling which all of us hold for each and every brother, as does this little book. Little in the sense of space actually covered, but large when we think and feel what each idea that is brought out there means to us.

"DO IT NOW!" has been the byword of every Beta member, since the publication of our last annual. Whatever we have undertaken, we accomplished in that spirit, and using results for proof, we believe that there are no obstacles too great to surmount if they are properly attacked.

First and foremost on the calendar, is the matter of our new home. It was stated in our last year's annual that we intended to purchase a lot and at some future time to build. A short time later, we learned that the "Keweenaw Club" was for sale. This place, while not exactly ideal for a fraternity house, was large, well located, and a bargain. Besides this it meant a home, and that, not at some indefinite time, which was all the assurance we could get from the plans we then had on foot. We had the house carefully inspected and through Brother Potter purchased it for \$14,500.00, this amount to be paid within the next ten years in yearly payments. When you consider that we were without capital to finance such a proposition, it seems like a pretty big lump to swallow, but Beta didn't put her irons in the fire until the time was ripe. A stock company was formed in the chapter to be known as the "House Fund Company of Beta Chapter of The Hammer and Tongs Fraternity." This organization sent circulars to all our alumni stating the proposed plan, and asking for sub-



THE BETA CHATER

Wanvig	Arminge	Turner	Gould	Hellberg	Snyder	Cameron	Wagner	Foard	Rigby
Ballard	McNabb	Scott	Welcher	VanValkenburgh	Wenk	Stillwell	Klepko	Wortley	Cook
	Newkirk	Schaber		Luce	Crocker	Ferris			

scriptions, in return for which each subscriber receives a stock certificate, giving him one share for each dollar received, the amount to be twentyfive dollars or over. The number of shares pledged among the alumni and active chapter, justified our buying the house. We rely a great deal on our alumni to pull us through the crisis. In future years when HAMMER AND TONGS has become an important and well recognized factor among national fraternities, and the purchasing of a house is of small moment, with what pride can every member of this chapter, who has helped make our burden lighter, look back and say "I helped to make the first home owned by a HAMMER AND TONGS chapter."

The matter of a new pin has received considerable attention at our hands. Beta believes that something more emblematic of this fraternity, and at the same time less apt to be confused with the pin of any other organization, should be gotten for our official badge. Brother Snyder started the movement by having designs, with our symbols, and two pins made which were the first and second choice of Beta. The designs and pins have been sent to the other chapters for their opinions. A cut of the pin which has received the most approval will be found on the insert with a brief discussion immediately following.

This chapter endorses most heartily the idea of a new constitution which its Alumni, along with the Alumni of the other chapters, have put on foot. The old one was good enough for the fraternity to get a foundation on, but last year and again this year, it has been found insufficient in a number of cases. We believe that the fraternity demands something better, just as it demands a better ritual, which we hope will soon be completed, thanks to Brothers Schrader and Hopkins.

While business has occupied more of our time this year than in preceding years, owing to the many new movements we have had to deal with, it cannot be said that we have not tried hard to keep up a strong outside showing which is

so necessary, both to secure good men and also maintain the standard which we have heretofore had.

We are going to chronicle the events, in their order, which we think will interest you most.

On April 3rd of last Spring, we held our fourth annual banquet at the Scott Hotel. No one could find a flaw in the way things were handled. Brother Potter acted as Toastmaster, and the following toasts were rendered;

The Work of Beta Chapter	C. B. Cameron.
Expansion	P. D. Brown.
Our Alumni in the Field	G. O. Randolph.
Who's Who and Why	B. R. Hicks.

Besides these a number of impromptu toasts were responded to, which gave just enough humor to offset the seriousness of the previous toasts.

W. T. McNabb, E. H. Stilwill, and C. W. Evans were initiated just previous to the banquet, so were present.

We held our last smoker for the year on April 9th. The house was crowded with our school friends, and all had a very enjoyable time.

The Iron Country Trip took place May 3rd with two full squads of HAMMER AND TONGS men there for roll call. The boys, with Brother Hicks as one of the instructors, greatly enjoyed the five weeks spent in mine surveying and sketching, and many good times were shown them by the town people of Quinnesec and Ishpeming.

Just before the Iron Country trip, we went to the train for the last time to see our senior brothers well started on their longest Journey, their Life Journey. No tears were shed, but at the same time a great big lump comes up in your throat when you have to say goodbye to those you know so well and who share with you the same fraternal bond.

During the summer months, some fifteen of our men were in school; eight took surveying and the rest shops. One squad took the geology trip the last six weeks. Brother Wagner did all he could to make it pleasant for those taking surveying, as he instructed in that department.

On July 20th, we initiated D. L. Newkirk, and held a little smoker among ourselves afterwards.

On September 20th, Brother Wagner took possession of our new house as Steward, and a week or so later, saw fourteen of the old men back in Houghton. All were pleased with the way Brother Wagner had put things in shape, and decided not to let grass grow under their feet in getting a line on some new men to fill the ranks. The Sophomores were able to size up the Freshmen pretty well in the hazing escapades that were pulled off the first week.

We held a smoker on October 7th, inviting all the freshmen that had impressed us favorably. Music and songs furnished most of the amusement, while light refreshments produced a satisfied look on every face.

The Freshmen-Sophomore Rush took place the night of October 9th under the arc lights on the school campus. Almost all the people of Houghton and many from surrounding towns were onlookers. The Sophomores were awarded the victory.

The annual football game between the above two classes took place October 16th. We were well represented on both sides, having Brothers Ferris, Stilwill, Gould, Klepetko, Snyder, and Welcker on the sophomore team, while Brothers Wortley, Rigby, Schaber, McNair, and Van Valkenburgh played with the freshmen. Final score, Sophomores 16, Freshmen 5.

Our efforts to secure good men for the coming year have not been in vain. We succeeded in pledging every man we went after, and on November 13th, we initiated J. I. Ballard, C. O. Wanvig, E. H. Gould, J. R. Scott, R. R. Van Valkenburgh, H. M. Turner, W. A. Rigby, and R. B. Wortley. The initiation was followed by a banquet at the Scott Hotel. Brother Wenk presided as Toastmaster, and response was given to the following toasts:

Welcome	T. J. Welcker.
The New Home	R. B. Wagner.
The Fraternity	C. B. Cameron.

The Alumni P. D. Brown.

The evening was pronounced a grand success by all.

C. F. Schaber, who was to have been initiated the night of the banquet was taken in December 6th, owing to a misunderstanding he had with his other fraternity at Purdue.

A. L. Ferris and M. W. Foard were initiated December 17th. A smoker was held afterward in which only members took part.

During the Christmas Holidays, only six of the boys stayed in Houghton, while the rest hung up their stockings by their own firesides. On January 7th, a number of HAMMER AND TONGS men banqueted at the Brevoort in Chicago. It was here that the first steps were taken towards the establishment of the Chicago Alumni Association. Their petition for a charter is now being considered.

On the 12th of February, we initiated E. Klepetko, G. E. Welker, B. M. McNair, and R. A. Case. A house party was tendered the initiates; selections on the violin by Brother Welker were prominent numbers on the program.

Besides these general details, a number of the brothers have distinguished themselves individually.

As everyone knows, the President of the Student Body is the highest honor that can be bestowed upon a student in this school. Knowing that we had a man well fitted for this position, we gave our support to Brother Wagner. Never before had a fraternity man received the slightest hope of being elected, but Brother Wagner, through his amiable disposition, enviable habits, and pleasing manners had made many friends among the student body. Knowing this, the other fraternity gave their support to one of the independents. Through their combined efforts, Brother Wagner was defeated, but by such a small margin (twelve votes) that it was almost as good as a victory in the eyes of the students.

Brother Cook and Brother Ballard have made Tau Beta Pi. This gives us four active representatives.

With the violin, Brother Welker has done us great credit by his exceptional talent.

The M. C. M. basketball team is made up almost entirely from our men. Brother Wenk, owing to his success in managing the baseball team, was selected to perform the same office for the basketball team. Brother Newkirk is Captain of this team, while Brothers Luce, Schaber, and Klepetko hold down positions on the same. Brother Luce has been a member of the team for the last three years.

In closing Beta wishes to say to her sister chapters that if at any time in the past, you have found her rather hard to deal with in some matters, don't think it was because she was stubborn and non-progressive. We feel that the future of this fraternity is something that must be delicately molded and a false or hasty step taken now might cause untold regret in later years.



THE GAMMA CHAPTER

- | | | | | | | |
|--------|---------|---------|-----------|----------|----------|--------|
| Harvey | Smith | Watson | Dyer | Brown | Marshall | West |
| | Jones | Lannon | McHugh | Douglass | Dittus | Fritzh |
| | Glasgow | Skavlem | Carpenter | Walker | | Lesh |
| | East | | | | | |

THE GAMMA CHAPTER.

COLORADO COLLEGE OF MINES

Dear Brothers:—

The 1909 issue of the Gear is one of which the Fraternity may well be proud. Gamma was very much pleased with the way in which it was gotten out, and heartily commended the Brothers of Beta for their interest in HAMMER AND TONGS.

We have had a very successful year this far. Nine of our last year's men returned in the fall, and we have initiated nine new men, all of whom are fine fellows, and men who have a deep interest in HAMMER AND TONGS. The initiation was held in Brother Dittus' rooms. Afterwards all were served with a "Dutch lunch" and everyone seemed to enjoy himself.

Our last year's order of meetings was re-adopted. The first Wednesday to be given up to social functions, and the third to scientific subjects. We regret that in the latter we have done very little. Most of our meetings have been strictly business, and we have instructed the new members about the problems now before the Fraternity. During the remainder of the year, however, we hope to accomplish something along scientific lines.

Last year, the question of getting a house for the Chapter was brought up. Several houses were considered, but it was found that so many of our men had already engaged rooms in the Fraternity houses that it would be impossible to support a house with the remaining men. The question, however, has not been dropped, and we hope soon to be able to get a house in Golden. At present, our business meetings are held in the Athletic Board room in the new Gymnasium.

In November we were entertained by Brother Lesh at the Sigma Nu house. A very pleasant evening was passed with music, songs, and a big lunch.

Several of our men are in the lime light in College matters. Brother Carpenter, manager of last year's foot-ball

team, although he did not manage a winning team, has the satisfaction of knowing that the treasury is, by far, better off than when he took hold. Brother West and Brother Dittus are respectively the Senior and Junior representatives on the Athletic Board. Brother West has also been honored with the presidency of the Senior class. This position gives him the editorship of the Bulletin of the school. Brother McHugh will manage the base-ball team this spring, and Brother Douglas has been chosen to lead next year's foot-ball team. Brother Fritch was assistant manager of the 1909 foot-ball team, and will manage the 1910 team.

Brother East was the treasurer of the Junior class last year and had the "honor" of collecting the money for the Junior Prom.

During the past summer eight members of the present Senior class went to the southern part of Colorado to study Geology in the field,—the work to be written up and presented as theses. Bros. Carpenter, Lesh, Skavlene, Glasgow, Dyer and Jones were in the squad. The work was done on the lines followed by the U. S. G. S., and was very interesting.

Last spring it was decided by this Chapter that, in order to get the Fraternity better known amongst the students and Faculty, a dance be given. For the last two months our business has dealt with the dance. Two weeks ago two hundred invitations were sent out to the members of the Junior and Senior classes, and the Faculty. The dance was held on the 28th of January, in the new gymnasium and was known as the "Hammer and Tongs Fraternity" Ball. The dance lasted from 8:30 P. M. until 1:00 A. M., and its success exceeded our expectations. About one hundred twenty-five couples attended.

We received a souvenir of the meeting of HAMMER AND TONGS men held recently in Chicago. We extend to the proposed new Alumni Association our heartiest wishes and hope that they follow in the steps of the South-Western Association, which in our opinion is doing work in the right

direction. We believe that it is through these organizations that we can more properly carry out the principles of the FRATERNITY OF HAMMER AND TONGS. Suggestions from these Associations should be treated with deep respect as it is the members of these who know what is best for the Fraternity.

Gamma extends her best wishes to the other Chapters and to the Alumni for a very successful year.

GAMMA.

THE SOUTH-WESTERN ALUMNI CHAPTER.
GLOBE, ARIZONA

Dear Brothers;—

We will be more than pleased to see "The Gear" again this year in its new "coat" and its improvement over each of the preceeding numbers.

We, the alumni, are indeed gratified to receive a small part of its pages as it makes us feel that we are all together again.

During the past year our number has swelled considerably. There were twelve men last year while now we boast of twenty-two members. This, Brothers, is due to the untiring efforts of Brothers Schrader and Pickard and great enough thanks cannot be given them.

The last regular meeting was held in Globe, Arizona. The following Brothers were present;

E. J. Schrader	Alpha
J. J. Kennedy	Alpha
C. A. Kumke	Beta
E. J. Haug	Beta
J. D. Wanvig	Beta
G. H. Morgan	Beta
G. B. Marshall	Beta
J. E. Thoms	Beta

To say that we all had a good time would be putting it mildly. We tried to see that the inner HAMMER AND TONGS man was properly taken care of and we believe he was.

The order of business every day was:

Morning—Getting over the night before.

Afternoon—Business meeting.

Evening (and night)—Getting ready for the morning business.

At this meeting the local (Globe) members of the South-Western alumni Chapter decided to hold dinners, the last Saturday evening of each month. The January dinner was a success in every detail.

The next regular meeting of the Chapter is to be held in El Paso, Texas at the St. Regis Hotel, July 3—4—5.

We cannot urge too strongly that all of the members be present. Visitors are cordially invited to make this their headquarters if in El Paso during this time.

We have not heard of any other Alumni Chapter in any other district. **GET BUSY BROTHERS—OUR MEETINGS MAKE LIFE ENJOYABLE.**

Our Brother, K. K. Koontz has been married as you undoubtedly all know and latest reports say he is "Papa" to a great big boy. Nine Rahs for "Kinter".

Below is to be found a list of the present members of our Alumni Chapter. In case your address is wrong or omitted write the Secretary, J. E. Thoms, that he may know where to reach you.

In closing, we wish to toast the undergraduates, "May you get through without a flunk". To the Alumni, "May you hold your position 'till you get a better one."

SOUTH-WESTERN CHAPTER.



THE HOUSE BETA CHAPTER

CHICAGO ALUMNI ASSOCIATION.

CHICAGO, ILL.

Dear Brothers:

With this year's issue of the "GEAR", another Alumni organization steps into line and extends its greetings to the Fraternity—namely, the Chicago Alumni Association. Following the example of the South-Western Brothers, the members in the locality have contemplated such a move for some time past but lacked the numbers to make it beneficial.

On January 7th, 1910, seven members met at the Breevort Hotel, Chicago, for the purpose of perfecting an organization. Those present:

George M. Shepard, '09 Alpha
C. Burch Cameron, '10 Beta
H. H. Hopkins, Jr., '08 Beta
E. P. Luce '10 Beta
W. T. McNabb, '11 Beta
C. D. Peacock, '08 Beta
J. F. Simpson, '09 Beta

An informal discussion of ways and means resulted in the unanimous decision to form an Association and then petition the active chapters for a charter, as a Chapter. Brother Hopkins was elected President; Brother Peacock, Vice-President; and Brother Shepard, Secretary. A petition was then sent to the Chapters for a Charter. It was decided that the regular meeting should be held at the Holiday Season. After business had been disposed of, the brothers sat down to a banquet and later, attended the theatre.

The object of the Association is to promote the interest and welfare of the Fraternity, in and around Chicago. Every member of the Fraternity, who has business or home interests anywhere in the locality is eligible. We have no dues—all expenses are paid, when they are incurred.

A great many brothers, from various chapters, pass through Chicago at odd times during the year. This fact is

especially true at Christmas, when they are on the way to, or from, their homes. We aim to make it convenient for those brothers to meet each other and the resident members of the Association, with the least trouble to themselves. Thus each member would form a wider acquaintance in the Fraternity. We also aim to supply, on request, any information, in our power to procure; also, to assist, in any manner possible, the growth and progress of our Fraternity.

We believe in the frequent co-mingling of the brothers, not only in the Chapters but also between the various Chapters. When this is not feasible, correspondence may be resorted to. In our opinion, a more frequent contact of ideas, from different sources, will do much to promote the growth and welfare of the Fraternity and dispell the effect of any controversy. We shall aim to keep in touch with the Chapters and with as many individuals as possible—especially those in our vicinity.

Although the official date of birth of the Association, is very recent, the "organization" has been in force some time. Chicago has been the scene of many a pleasant gathering of HAMMER AND TONGS. The first recorded "banquet" goes back to the days of the Rhombohedron Club, when Kumke, Hasselbring and Hopkins spent a day at various lunch parlors. That was in Sept. 1904 and things have been "doing" ever since. It would be useless to try to chronicle all the events since then.

On October 13th, 1909, Brothers Shepard, Simpson and Hopkins met at the Union Hotel, by agreement. Previously, permission had been obtained, from the Chapter, to initiate Mr. George A. Morrison, a Rhom. member. The initiation was carried out and Brother Morrison was then welcomed with the customary banquet and theatre party.

On the occasion of Brother Earling's visit home, an informal dinner was held at the Boston Oyster House. Those in attendance were Brothers Cameron, Earling, Peacock and Hopkins. On December 29th (two days later),

Brother E. R. Graham, Beta, '07, was "discovered" in town. "Rube" was given an opportunity, later in the evening, at Brother Earling's home, to recite his past adventures.

Brother Torrence, Alpha '09, has been so busy enjoying his honeymoon that he has neglected to call and register. Brother Woodrich, Alpha '08, who has been working in the city for some time past, left just before the formation of the Association and we just missed enrolling another Alpha Brother.

Brother Peacock and Brother Simpson are with us now and we hope more Alumni members will come to join the Alumni Association. Brother Barr was in the city recently and Brother Varney made a visit of three weeks.

Any of the brothers, contemplating a visit to our locality, is urged to send advance notice, if possible, of his intention, to one of the resident brothers. An effort will be made to arrange a meeting of the brothers, so that he may get acquainted with the different members, without the task of searching for each one. The "office" of the Association is at 50 Dearborn St. Chicago, where Brother Hopkins is located.

In closing, we wish to extend to the Brothers, our earnest wishes for their success; to the Chapters, our hope for a prosperous year.

"To HAMMER AND TONGS: May thy star be always at its culmination—the brightest satellite in the Engineering world."

Yours fraternally,

CHICAGO ALUMNI ASSOCIATION.

THE NEW PIN

For the past two years, Beta has been receiving letters from her alumni, requesting that something be done towards changing our pin. These were all brought about by the fact that said alumni were mistaken for members of other fraternities, and in one or two cases had gotten in wrong on account of this, but were given the glad hand when it was found that they were HAMMER AND TONGS men and not members of a prominent national boozing fraternity. Two of our active members, while home on their vacations last summer, were also made to feel that a new pin was an absolute necessity.

A committee was appointed at the beginning of the fall term to investigate this matter, and on looking over catalogues from various jewelers, it was found that the skull design was the essential part of a great number of fraternity, class and medical society pins, and in some cases, the pins were identical with ours, differing only in that the hammer and tongs were replaced by keys, hammers, swords, etc. These pins cannot be told from a HAMMER AND TONG pin when they are being worn.

Our fraternity is not so well known at the present time that a change of pin would mean a loss of prestige, but we are growing and becoming better known every year, and in a few years, when a mistaken identity will be a common occurrence, and it becomes absolutely necessary to change our pin, we will be set back to where we are at present. The older the fraternity gets, the harder it is to keep in touch with all our alumni, therefore Beta thinks this change should be brought about as soon as possible.

The pin committee has had several designs submitted, and two sample pins made up. These are now under consideration by the other chapters. The design that met the most approval at Houghton and in the Southwest is the one we have inserted in this issue. This cut does not do justice to the pin, but will give the brothers a chance to see the general appearance of same. The hammer and tongs in the





pin are set out, and are given the importance that they deserve; the rim of the gear wheel is set with pearls, and the center stone is a garnet. Our Greek letters are not very prominent, but they can be made more so by putting them in a brighter finish than the rest of the gold work. This pin is entirely original and contains nothing that is not characteristic of HAMMER AND TONGS. Its price is \$10.00. This may seem pretty steep if compared with what we are now paying, but when compared with that of other fraternity pins, it is very reasonable. We think that a rebate can be obtained on our old pins from the firm with whom we place the order for the new ones. As soon as we hear from the other chapters, we will get out a card asking for suggestions on various details, price, etc. and will be glad to hear from any of the brothers with regard to this matter. If possible, we would like to have a new pin accepted before our new ritual is completed next July.

IN MEMORIAM

CHARLES FREDERICK HERMAN

BORN JULY 2nd, 1883 AT CALUMET, MICHIGAN

DIED OCTOBER 31st, 1909 AT HIBBING, MINN.



Friend after friend departs;

Who hath not lost a friend?

There is no union here of hearts

That finds not here an end.

ALUMNI NOTES

Brother Jacques (Alpha) is back on the campus to supplement his engineering education with a course in law. While we do not make any insinuations regarding the laws we would caution "Bob" not to be drawn into any winding paths, and to hold fast to the virtues he acquired among the engineers.

Brother "Peg" Woodrich (Alpha) is again in Minneapolis and is now with the Kettle River Quarries Co.

Brother Strong (Alpha) spent a few days with us during the winter term.

Brother Torrence (Alpha) "slipped one over" on us when we came back after Christmas and found that he had "gone and done it." We always suspected that Ell had something on his mind last year, and now we see that our suspicions were justified. The dreadful part of the matter is that he is advising his friends to do likewise.

We are somewhat alarmed concerning Brother Shepard who was living with Brother Torrance until it happened. We are daily expecting to hear things about "Shep".

Brother Buck (Alpha) appears about college occasionally. He is doing railroad work for the D. M. & N. Ry. We hear that he is conducting a night class among the shop employes and helping them to get the rudiments of education. Good work.

Brother Walling (Alpha) shows up at meetings quite often and gives us the business man's point of view. He is now manager of the University Store of the N. W. School Supply Co.

Brother Larkin (Alpha) was with us on meeting night recently. Likewise, he also, is married.

Brother Sheffield is drainage engineer for the M. & I. Ry. in Northern Minnesota.

On November 18th, occurred the marriage of Brother Weisel (Alpha) and Miss Thula Toole of Missoula, Mont. Brother Weisel is the western manager of the Mann Lumber Co. of Minneapolis.

Brother A. L. Smith (Beta) was married to Miss Grace Alice Stowell, on September 8, 1909 at Pontiac, Mich.

Brother J. A. Barr, (Beta) was married to Miss Ellen Obenhoff, on February 4, 1909, at St. Paul, Minn. His marriage came as a great surprise, for we all thought he was frozen in at Silverton, Colo.

Brother "Dutch" Andrews, (Beta) has been with us several times during the past year. The development of his mine, the Ora Belle, at Hart, Cal., is progressing rapidly, and he is installing a mill.

Brother Randolph, (Beta) dropped down from the north for a few days during the winter.

Brother Staples, (Beta) after spending a few days with us last fall, went to Marquette for the winter. He has now gone into the lumber business with his father in British Columbia.

Brother P. D. Brown (Beta) was with us until after Christmas. He was working for the C. & H.

Brother Earling (Beta) has been promoted to chief engineer for the Superior & Boston, at Globe, Ariz. Keep up the good work, Roy.

Brother Potter (Beta) is Superintendent of the Superior mine, one of the C. & H. properties.

Brother Meuche, (Beta) has charge of the diamond drill work, in the vicinity of Houghton, for the Longyear & Hodge Co.

Brother Ralph Wagner (Beta) has a position as engineer with the Superior & Boston, at Globe, under Brother Wanvig.

Brother Barr, (Beta) has accepted, temporarily, his old position in the Metallurgy Department.

Brother Newkirk, (Beta) will instruct in Topography and Surveying this summer.

Brother Welcker (Beta) will manage the Iron Country trip this spring.

Brother Cameron (Beta) has accepted a position as Superintendent with the North America Mines Development Co. He will be located at Spring Dale, Nev.

Brother Newkirk and Brother Snyder, (Beta) have accepted "positions" as Tau Beta Pi men for the ensuing year.

EDITORIALS.

Remember that the only way to make our GEAR a success is to make suggestions and to criticise where needed.

*

A department of engineering problems would not be a bad idea. Why not have one?

*

We want everyone to feel that this is his book. Help it along.

*

That never dying expression;—"DO IT NOW".

*

There are to be two HAMMER AND TONGS reunions this year. One to be held in El Paso, Texas on July 2—3—4—1910 at the St. Regis Hotel. The other date has not been set but will be held in Chicago during the Christmas holidays. "Come one, come all."

*

Read the discussion on the new pin. Read it again and then write us what you think.

*

Now that we have prospects of getting new Chapters, let us design a new Charter. The old one could be improved upon.

*

Several of the Alumni are working on a new Ritual. If any of the Brothers have any suggestions to offer write to Brother Schrader or to Brother Hopkins.

*

Since the last issue we have another Alumni Association in the field. Get busy Brothers.

*

Why not have a National Convention soon?

*

Register when in Chicago with the Chicago Alumni, 50 Dearborn St. Brother H. H. Hopkins, Jr. President.

Attention Beta. The first M. C. M. reunion will be held in August 1911. How many can come?

*

Read the discussion on the new pin!

*

Keep us informed of your residence so that the Brothers may keep in touch with one another.

DIRECTORY OF HAMMER AND TONGS
FRATERNITY

- ABBOTT, T. S. Student Alpha '11
425 Dayton Ave. St. Paul, Minn.
Chi Psi.
- ADAMS, J. W. Student Alpha '11
524 Laurel Ave., St. Paul, Minn.
Chi Psi.
- ALSIP, A. A. Beta '08
4937 Woodlawn Ave. Chicago, Ill.
Helen Mine, Ontario, Can.
Sigma Nu. Tau Beta Phi.
- ANDREWS, W. S. E. M. Beta '06
5601 London Road, Duluth, Minn.
Pres. and Gen. Manager Oro Belle Mines Co.,
Hart, Cal.
- ARMITAGE, J. B. Student Beta '10
422 East St., Three Rivers, Mich.
- ATKINSON, W. B. Student Alpha '11
- ANDERSON, G. A. B. S. E. M. Beta '06
301 Hudson Ave., Detroit, Mich.
- BALLARD, J. I. Student Beta '10
Alliance, Ohio.
Sigma Alpha Epsilon. Tau Beta Pi.
- BARNUM, M. C. Student Alpha '11
2109 James Ave. So. Minneapolis, Minn.
Beta Theta Pi.
- BARR, J. A. B. S. E. M. Beta '07
546 Colman Bldg., Seattle, Wash.
Instructor, Michigan College of Mines.
Houghton, Mich.

- BARTLETT, H. H. B. S. E. M. Beta '04
 517 Hickory St., Virginia, Minn.
 Pres. H. H. Bartlett Co. Gen Contractors.
 Virginia, Minn.
- BATSON, C. D. *no hear* C. E. Alpha '07
 912 Goodrich Ave., St. Paul, Minn.
 Ass't Eng'r Board of Water Commission.
 23 E. Fifth St., St. Paul, Minn.
 Beta Theta Pi.
- BENSON, A. F. E. M. Beta '03
 Virginia, Minn.
 Consulting Engr., Mesaba Engineering Co.
 Virginia, Minn.
- BENJOUSKY, T. D. E. M. Gamma '09
 Del Monte, Colo.
 Foreman, Arpod Mine, Silverton, Colo.
- BLACKMAR, D. C. Student Beta '12
 Charlotte, Mich.
- BROCKWAY, A. E. E. E. Alpha '09
 1310 Sixth St., S. E. Minneapolis, Minn.
 Apprentice, W. E. & M. Co.
 811 Center St. Wilkinsburg, Pa.
 Tau Beta Pi.
- BROWN, P. D. Beta '09
 617 North 34 St., Philadelphia, Penn.
 Cortez Asso. Mines, S. A. Jacola, Hqo., Mex.
 Sigma Alpha Epsilon.
- BROWN, W. R. Student Gamma '10
 Evanston, Ill.
 Tau Beta Pi. Sigma Alpha Epsilon.
- BUCK, F. W. M. E. Alpha '09
 1621 E. Superior St., Duluth, Minn.
 Draftsman O. M. & N. Ry., Proctor, Minn.
 Phi Kappa Psi. Tau Beta Pi.

Ed. 5/2/11
Rob.

Ed.

- BURKE, G. M. B. S. E. M. Beta '06
 Ganandagua, N. Y.
 Gen. Mgr. Bullforg Mining Co., Joplin, Mo.
- Paired*
Bur. — BUSH, J. C. Alpha '10
 23 60th Ave. E., Duluth, Minn.
 Draftsman. Duluth Street Ry. Co.
 Duluth., Minn.
 Sigma Chi.
- BYRON, R. R. E. Met. Gamma '08
 2256 Williams St., Denver, Colo.
- CARROLL, W. F. B. S. E. M. Beta '09
 423 W. 59th St., Chicago, Ill.
 Compania Carbonitera „Agujita” S. A.
 Agujita via Sabinas Coah, Mex.
- CAMERON, C. B. Student Beta '10
 95 32nd St. Milwaukee, Wis.
 Tau Beta Pi.
- CASE, R. A. Student Beta '12
 910 Fifth Ave. N., Great Falls, Mont.
- CARPENTER, P. H. E. M. Gamma '10
 494 E. State St. Sharon, Penn.
 Phi Delta Theta. Tau Beta Pi.
- Paired*
Bur. — CHANDLER, M. D. Alpha '09
 Calhoun Place, Minneapolis, Minn.
 Tourist Agent. 410 Nicollet Ave.
 Minneapolis, Minn.
 Phi Kappa Psi.
- CLAPP, L. P. Gamma '08
 Melbourne, Australia.
- COBBAN, R. C. E. E. Alpha '09
 811 Center St., Wilkensburg, Penn.
 Westinghouse Electric Co. East Pittsburg, Pa.
 Tau Beta Pi.

- CONLEY, W. E. Student Alpha '10
 Lake Mills, Minn. 1910 E 55th St
 Sigma Chi. Tau Beta Pi. Cleveland, O.
- COOK, W. R. Student Beta '10
 Marinette, Wis.
 Phi Kappa Sigma. Tau Beta Pi.
- COWIN, JAMES Student Alpha '07
 Minneapolis, Minn. C.A.P. Turner. 806 Phoenix
 Bldg
- CRABB, J. M. Student Beta '09
 38 Warren Ave. W., Detroit, Mich.
 Engineer, Republic, Mich.
- CROCKER, B. E. Student Beta '11
 311 East C St., Iron Mountain, Mich.
- CURTISS, T. H. Student Alpha '11 Pa.
 Fairmont, Minn. La.
 Delta Tau Delta.
- CURTIS, L. P. E. M. Gamma '09
 548 Equitable Bldg., Denver, Colo.
 Supt. Messida Fruit Lands Co., Goshen, Utah.
 Kappa Sigma.
- CURTIS, L. B. B. S. Alpha '09
 2706 Fremont Ave. S., Minneapolis, Minn.
 Bridge Dept. Minneapolis Steel & Machinery Co.
 Minneapolis, Minn.
 Sigma Alpha Epsilon.
- DALLIMORE, A. N. *no hear* Alpha '08
- DECAMP, W. V. E. M. Gamma '08
 Harrington, Ariz.
 Gen. Mg'r. Pacific Copper Mining Co.
 Harrington, Ariz.
- DITTUS, E. J. Student Gamma '11
 725 E. 5th St., Tuscon, Ariz.
 Phi Kappa Psi.

- DOUGLAS, W. C. Student Gamma '11
Plainfield, N. J.
- DOWNING, R. L. B. S. E. M. Beta '06
Hibbing, Minn.
Shenango Furnace Co., Chisholm, Minn.
- 01 — DU TOIT, JR. G. A. Student Alpha '10
LA. Chaska, Minn. S
Beta Theta Pi.
- + DUNCAN, K. J. Student Alpha '10
806 4th St., S. E. Minneapolis, Minn. S
Tau Beta Pi.
- DYER, C. E. Student Gamma '10
Golden, Colo.
Tau Beta Pi.
- EARLING, R. B. B. S. E. M. Beta '08
1315 Aster St., Chicago, Ill.
Engr. Superior & Boston Copper Co.
Globe, Ariz.
Tau Beta Pi.
- EAST, J. H. Student Gamma '10
1137 Vine St., Denver, Colo.
- EDGERTON, E. R. Alpha '07
431 So. Huron St., Sand Point, Idaho.
Eng. Sand Point, Idaho. S
Sigma Alpha Epsilon.
- red — ELLIS, B. B. Alpha '08
LA. Hibbing, Minn. S
The Drake & Stratton Co., Hibbing, Minn.
Sigma Chi.
- ELDER, R. B. E. Met. Gamma '08
Kappa Sigma House, Golden, Colo.
Gold Pioneer Mining Co., Telluride, Colo.
Kappa Sigma. Tau Beta Pi.

- EVANS, C. W. Beta '11
College Ave., Houghton, Mich.
Bisbee, Ariz.
- EVERHEART, ERNEST B. S. Beta '08
644 N. Crocket St., Sherman, Tex.
- R* FARNAM, J. P. Alpha —
- FERRIS, A. L. Student Beta '11
514 Elizabeth St., Petosky, Mich.
- FOARD, M. W. Student Beta '12
312 E. Spruce St., Sault Ste Marie, Mich.
- FOX, P. M. *W. Bear* Alpha '10
Mankato, Minn.
Cadet, U. S. M. A. West Point, N. Y.
Sigma Chi.
- FRICK, F. F. Gamma '08
203 E. 4th St., Peru, Ind.
Anaconda Smelting Co., Anaconda, Mont.
- FRITCH, GEORGE Student Gamma '11
Denver, Colo.
Sigma Nu.
- W* FURBER, P. B. C. E. Alpha '08
914 E. 19th St. Minneapolis, Minn.
Ass't Engr. with C. A. P. Turner, M. Am.
Soc. C. E. *506 Phoenix Bldg*
Sigma Alpha Epsilon.
- GLASGOW, C. W. Student Gamma '10
4371 Washington Ave., St. Louis, Mo.
Phi Delta Theta.
- GOULD, E. H. Student Beta '11
Battle Creek, Mich.
Phi Mu Alpha.

GRAHAM, E. R. B. S. E. M. Beta '07
Crosswell, Mich.
Wickes, Mont.
Tau Beta Pi.

— GRYGLA, E. E. Alpha '08
Moapa, Nev.

~~S~~ HAUG, E. J. Beta '10
Houghton, Mich.
Chemist, Arizona Commercial.
C/o Gila Co., Copper Hill, Ariz.
Sigma Phi.

— HANKS, I. B. Alpha '07
2636 Hennipin Ave., Minneapolis, Minn.
Pres. and Gen. Mgr., Lum-Hanks Elevator Co.
46 Chamber of Commerce Minneapolis, Minn.

HARVEY, J. V. Student Gamma '11
1201 18th St. Souix City, Iowa.

HASSELBRING, ALBRECHT E. M. Beta '06
Flint, Mich.
Mining Engineer. Lake Superior Corp.,
Sault Ste Marie, Ont.

— HAUSER, K. D. Student Alpha '11
827 Mound Ave., St. Paul, Minn.
Delta Tau Delta.

— HAUSER, R. V. Student Alpha '10
827 Mound Ave., St. Paul, Minn.
Delta Tau Delta.

pd → — HAYNES, J. E. B. A. Alpha '08
21. Cor. Selby & Virginia Aves., St. Paul, Minn.
Salesman. St. Paul and Yellowstone Park.
Beta Theta Pi.

HELLBERG, E. H. Student Beta '10
Norway, Mich.

- HERMANN, C. F. Deceased Beta '06
- HICKS, B. R. E. M. B. S. Beta '08
736 Algoma St., Oshkosh, Wis.
Engineer. Tenn. Copper Co., Ducktown, Tenn.
- ✓ HILL, STANLEY Student Alpha '11
Minneapolis, Minn.
- HOPKINS, JR. H. H. B. S. E. M. Beta '08
Mining Engineer. 50 Dearborn St., Chicago, Ill.
- HOUSTON, F. K. Beta '05
Beaver, Penn.
Grand Forks, B. C. Canada.
- ✓ JACQUES, ROBERT, C. E. Alpha '09
1205 E. 3rd St., Duluth, Minn.
Sigma Chi.
- ✓ JEVNE, G. W. Student Alpha '10
2441 Elliot Ave. S., Minneapolis, Minn.
- ✓ JOHNSON, PAUL Student Alpha '11
2931 Aldrich Ave. N., Minneapolis, Minn.
Sigma Alpha Epsilon. Scabbard and Blade.
~~Las Esperanzas, Mex.~~
- JONES, E. F. Gamma '10
Las Esperanzas, Mex.
- JONES, W. W. Student Alpha '11 *pd. L.R.*
Blackfoot, Idaho.
- KASPER, W. F. Student Alpha '11
625 So. Elm St., Owatonna, Minn.
Phi Gamma Delta.
- * KENNEDY, J. J. E. M. Alpha '08
pd. 436 Iglehart Ave., St. Paul, Minn.
Mining Engineer. San Miguel Mining Co.,
La Palma, via Pesqueira, Sonora, Mexico.
Psi Upsilon.

- KILGOUR, M. H. E. M. Gamma '08
Canadian Bank of Commerce,
16 Exchange Place, New York.
- KINGSLEY, NEILS Student Alpha '11
618 7th Ave., S. E., Minneapolis, Minn.
Delta Tau Delta.
- KINGSTON, C. J. Beta '06
Central Mine, Mich.
- KIRCHMAN, R. I. E. M. Gamma '09
Box 216, Socorro, New Mex.
Instructor in Physics & Mech. Draw.
New Mex. School of Mines.
Kappa Sigma, Tau Beta Pi.
- KIRKPATRICK, M. R. E. M. Beta '07
713 8th Ave., Seattle, Wash.
- KLEPETKO, ERNEST Student Beta '11
46 Garden Place, Brooklyn, N. Y.
Alpha Delta Phi
- KNOWLTON, H. H. C. E. Alpha '08
3085 St. S. E., Minneapolis, Minn.
Engr. Pacific Ry. Extension.
San Jose, Costa Rica.
Sigma Chi.
- KOONTZ, K. K. B. S. E. M. Beta '08
Mining Engr., Shannon Copper Co.
Shannon Mine, Metcalf, Ariz.
- KRATZ, A. M. B. S. Beta '05
23 Church St., Calumet Mich.
Eckstein Mec. Engineer Dept.
Box 149. Johanasberg, Transvaal.
- KRUGER, H. A. Gamma '09
Denver, Colo.
La Ojuela, Durango, Mex.

- KRUSCHKE, G. A. E. E. Alpha '09 *Pol. (L.P.)*
 785 State St., Schnectachy, N. Y.
 Test Dept., Gen. Electric Co.
 Schenectachy, N. Y.
- KUMKE, C. A. E. M. Beta '06
 35 Humbolt Ave., Detroit, Mich.
 Chief Engr. Ariz. Comm. Copper Co.,
 Globe, Ariz.
- LANNOM, J. A. Student Gamma '11
 1024 N. Main St., Pueblo, Colo.
- LARKIN, A. E. Alpha '08
 1634 Carrel Ave., St. Paul, Minn.
 Supt. Republic Creosoting Co., Minneapolis
 Factory, Minneapolis, Minn.
 Beta Theta Pi.
- LEACH, E. W. Student Alpha '10
 Bemidji, Minn.
- LESH, H. B. Student Gamma '10
 909 West End Ave., New York.
 Sigma Nu.
- LEWIS, W. M. E. M. E. Met. Gamma '09
 642 Portland Ave., St. Paul, Minn.
 Concentrator. East Ely, Nev.
- LONGAN, W. B. B. S. E. M. Beta '09
 1100 E. Armour Boulevard, Kansas City, Mo.
 Min. Engr. Cia. Carbonifera "Agujita y
 Anexas" S. A. Lampacitos, Coah, Mex.
- LOWELL, J. B. E. M. E. Met. Gamma '08
 24 Brattle St. Worcester, Mass.
 Engineer, Geo. A. Fuller Construction Co.
 Boston, Mass.
 Phi Gamma Delta. Tau Beta Pi.

- LUCE, EARLE P. Student Beta '10
1028 5th Ave., Grand Rapids, Mich.
- MACKILLICAN, JAMES ANGUS B. A. Beta '06
Superintendent Michigan & Montana Development Co., Wickes, Montana.
- MARSHALL, GEO. BOWEN Beta '05
181 Alexander Ave., New York City.
Guanajuato, Mexico. Apartado 25, San Matias.
- MCGINNIS, W. H. Student Alpha '11
510 15th Ave., S. E. Minneapolis, Minn.
Delta Tau Delta.
- MCLACHLAN, B. H. Student Beta '11
Chicago, Ill.
- McNABB, W. T. Student Beta '11
Bad Axe, Mich.
- McNAIR, B. Student Beta '12
902 Cedar St., Sault Ste Marie, Mich.
- McHUGH, Student Gamma '11
809 So. Kline St. Aberdeen, So. Dak.
- McRAE, R. S. E. M. Alpha '07
Stewart, B. C.
Alpha Delta Phi
- MEUCHE, A. F. B. S. E. M. Beta '05
Houghton, Mich.
Representative, Longyear & Hodge.
Houghton, Mich.
Tau Beta Pi.
- MINER, R. I. Alpha '10
3022 Dupont Ave., Minneapolis, Minn.
Salesman. Minneapolis Paper Co.
- pd — MOWERY, C. W. Alpha '09
Northfield, Minn.

MORGAN, G. H. Beta '08
671 Bryson St., Youngstown, Ohio.
Leadville, Colo.

MORRISON, G. A. E. M. Beta '04
2111 Morgan Ave., Morgan Park, Ill.
Examining Engineer for Calumet Exploration Co.
Cusihuiriacic, Chia. Mex.

NEWKIRK, D. L. Student Beta '11
123 Maybury Gd. Ave., Detroit, Mich.
Tau Beta Pi.

NEER, PAUL Gamma '09
Golden, Colo.
San Juancito, Honduras.

PALMER, P. B. *No Hear* Student Alpha '10
923 Grand Ave., St. Paul, Minn.

PARKHURST, F. S. E. M. Beta '04
522 Cedar Ave., Niagara Falls, N. Y.
Ass't City Engineer, Niagara Falls, N. Y.

PEACOCK, C. D. B. S. E. M. Beta '08
731 E. 50th St., Chicago, Ill.

PERKINS, W. J. B. S. E. M. Beta '07
Norway, Mich.
Mining Engineer, Leetonia Mining Co.
Hibbing, Minn.

PERRY, J. B. Student Alpha '11 *Ad En*
813 Fulton St. S. E., Minneapolis, Minn.
Sigma Alpha Epsilon.

PHILLIPS, R. B. Beta '06
214 Durango St., El Paso, Tex.

PICKARD, B. O. B. S. E. M. Beta '07
6002 Lincoln Ave., Omaha, Neb.
Mining Engineer, Shannon Copper Co.
Metcalf, Ariz.

- | | |
|---|-----------|
| POTTER, OCHA | Beta |
| Houghton, Mich. | |
| Supt. Superior Copper Co. Houghton, Mich. | |
| Tau Beta Pi. | |
| RANDOLPH, G. O. | Beta '07 |
| B. S. E. M. | |
| 213 E. Arch St., Marquette, Mich. | |
| With Longyear & Hodge. Box 990. | |
| Cobalt, Ont. | |
| RIGBY, W. A., A. B. | Beta '11 |
| Student | |
| Mt. Vernon, Iowa. | |
| Sigma Nu. | |
| RIGGS, FRED | Beta '10 |
| 323 W. State St., Princeton, Ind. | |
| RIKER, E. A. | Beta '10 |
| 725 Church St., Flint, Mich. | |
| Olivet, Mich. Student. | |
| ROOD, LYNN | Alpha '09 |
| E. M. | |
| 584 Grand Ave., St. Paul, Minn. | |
| Delta Upsilon. | |
| ROSE, W. A. | Alpha '06 |
| E. M. | |
| Eng. Oliver Mining Co. | |
| 125 Cedar St., Hibbing, Minn. | |
| Delta Tau Delta. | |
| RUSSEL, D. O. | Gamma '09 |
| E. M. | |
| Mining Eng. with J. A. Russel. | |
| Kuala Lumpur, Selangor, | |
| Federated Malay States. | |
| Tau Beta Pi. | |
| RUPERT, A. M. | Gamma '11 |
| Student | |
| 164 Genessee St., Geneva, N. Y. | |
| Silverton, Colo. | |
| SAWER, E. L. | Alpha '11 |
| Student | |
| 1506 Emerson Ave. North, Minneapolis, Minn. | |
| Phi Gamma Delta. | |

SCHABER, C. F. Student Beta '11
434 Williams St., Jackson, Mich.
Theta Xi.

SCHAFFER, LOUIS E. M. Gamma '09
Lake City, Colo.
Supt. Arpad Mine, Silverton, Colo.
Kappa Sigma. Tau Beta Pi.

SCHRADER, E. J. E. M. Alpha '05 *72.*
694 Marshall Ave. St. Paul, Minn.
Supt. San Miguel Gold Mining Co.
La Palma, via Pesqueira, Sonora, Mexico.

SCOTT, Jr. J. A. Alpha '11
315 55th Ave., West Duluth, Minn.
With J. A. Scott, Sr. in Real Estate and
Insurance business. Duluth, Minn.
Phi Kappa Psi.

SCOTT, J. R. Student Beta '11
615 N. Farragut St. Bay City, Mich.

SHEDWICK, WM. J. Beta '09
618 W. 34th St. Philadelphia, Pa.
Los Grodos, Gro., via Rio Bolsas, Mex.

SHEFFIELD, F. W. C. E. Alpha '09
21 209 S. Ash St. Crookston, Minn.
Construction Engineer, M. & I. Railroad.
C/o M. D. Stoner, Bemidji, Minn. *5*
Phi Gamma Delta.

SHELDON, C. G. Beta '10
R. F. D. No. 2. Grand Rapids, Mich.
Engineer, Victoria Copper Co. Victoria, Mich.

SHEPARD, G. M. C. E. Alpha '09
22 Bridge & Building Dept. C. M. & St. Paul Ry.
1242 Railway Exchange, Chicago, Ill.

- SIMPSON, J. F. B. S. E. M. Beta '09
 6157 Crescent Road, Chicago, Ill.
 Engineer, Hammond, Ind.
 Kappa Sigma.
- SKAVLEM, H. G. E. M. Gamma '10
 Janesville, Wis.
 Tau Beta Pi.
- SMITH, A. L. B. S. E. M. Beta '06
 148 West Lawrence St., Pontiac, Mich.
 Engr. Brotherton Mine, Wakefield, Mich.
- SMITH, C. B. Alpha
 Maurice E. Haman, Helena, Mont.
- SMITH, LYON E. Met. B. S. Gamma '10
 1547 Beacon St., Brookline, Mass.
 Kappa Sigma.
- — SNEVE, J. S. Student Alpha '11
 288 Summit Ave., St. Paul, Minn.
 Chi Psi.
- SNYDER, E. H. Student Beta '11
 903 First Ave., Salt Lake City, Utah.
 Tau Beta Pi.
- SPRING, W. W. Alpha '07
 2200 First Ave. Minneapolis, Minn.
 Roberst Heating Co. Minneapolis, Minn.
- STAPLES, C. B. Beta '08
 Cranbrook, B. C.
 Landlooker, 133 W. Ohio St. Marquette, Mich.
 Psi Upsilon.
- STARRETT, H. M. M. E. Alpha '09
 818 7th St. S. E., Minneapolis, Minn.
 Fairmont Machine Co. Fairmont, Minn.
 Phi Gamma Delta.

- STEINBACH, H. P. B. S. E. M. Beta '06
 L'Anse, Mich.
 Supt. Kinnet Mine, Kinney, Minn.
- STILWILL, E. H. Student Beta '11
 163 Maybury Ave., Detroit, Mich.
- STRONG, J. L. E. M. Alpha '08
 1921 Dayton Ave. Merriam Park, Minn.
 Engr. Oliver Iron Mining Co.
 608 Wolverine Building, Duluth, Minn.
- SWEENEY, W. G. Beta '06
 Baxter Springs, Kan.
 Supt. Sweeney Mining & Engr. Co.
 Baxter Springs, Kans. & Lincolnville, Okla.
- THOMS, J. E. E. M. Beta '08
 Three Rivers, Mich.
 Engr. for Live Oak Development Co.
 Black Warrior, Ariz.
- TIMBERLY, W. D. Student Alpha '10
 2531 Taylor St., Minneapolis, Minn.
 Sigma Alpha Epsilon. Scabbard and Blade.
- TORBERT, J. B. B. S. E. M. Beta '07
 Jersey Shore, Lycoming Co. Pa.
 Cerro de Pasco Mining Co.
 Cerro de Pasco, Peru.
- TREMBATH, JAMES Beta '08
 223 So. Lincoln St., Spokane, Wash.
- TORRANCE, JR. ELL C. E. Alpha '09
 28 West 66th Street, Chicago, Ill.
 Insp. Univ. Portland Cement Co. *pd*
 Buffington, Ind.
 Psi Upsilon.
- TURNER, H. M. Student Beta '11
 341 Houston Ave. Crookston, Minn.
 Kappa Sigma.

- VAN VALKENBURGH, R. R. Student Beta '12
Care of V. & W. Co., Wenatchee, Wash.
- VARNEY, F. W. Beta '08
Care P. W. Spaulding, Evanston, Wyo.
611—12 McCormick Bldg. Salt Lake City,
Utah.
Spaulding & Varney, Mining Engrs,
Denver, Colo. & Salt Lake City, Utah.
- VINAL, E. L. Alpha '05
New Bedford, Mass.
Engr. U. S. G. S., New Bedford, Mass.
- WAGNER, J. E. B. S., E. M. Beta '08
Belding, Mich.
Engr. Bodie, Cal.
- WAGNER, R. B. Student Beta '10
181 Hastings St., Grand Rapids, Mich.
Tau Beta Pi.
- WALKER, STANLEY Student Gamma '11
1057 Broadway, Denver, Colo.
- WALLING, B. B. E. E. Alpha '09
North Western School Supply Co.
Mgr. University Store, 331 Fourteenth St.
Minneapolis, Minn.
- WANVIG, C. O. Student Beta '12
404 Webster Place, Milwaukee, Wis.
- WANVIG, J. D. B. S., E. M. Beta '08
404 Webster Place, Milwaukee, Wis.
Supt. Superior & Boston Copper Co.
Superior & Boston Copper Co. Globe, Ariz.
Tau Beta Pi.
- WARREN, Jr., A. H. Alpha '09
645 Fairmont Ave., St. Paul, Minn.
Carnegie Steel Co. St. Paul, Minn.
Psi Upsilon.

- WASLEY, W. A. E. Met. Gamma '09
 1018—13th St., Greeley, Colo.
 Utah Copper Co., Garfield, Utah.
 Beta Theta Pi.
- WATSON, G. P. Student Gamma '10
 Greeley, Colo.
- WEISEL, G. H. Alpha '06
 3113—3rd Ave., Minneapolis, Minn.
 Mann Lumber Co., Henderson, Mont.
- WELCKER, T. J. Student Beta '11
 867—3rd Ave., Salt Lake City, Utah.
- WELKER, Jr. G. E. Student Beta '10
 Oil City, Pa.
 Omicron Pi Omicron.
- WENK, R. W. Student Beta '10
 712 Marinette Ave., Marinette, Wis.
 Kappa Sigma.
- WESBROOK, D. M., M. E. Student Alpha '10
 906—5th St. S. E., Minneapolis, Minn.
 Chi Psi. Tau Beta Pi.
- WEST, J. R. Student Gamma '10
 Greeley, Colo.
- WHEELER, W. H. E. M. Alpha '06
 820 Palace Bldg. Minneapolis, Minn.
 Jones-Wheeler-Crammer Co.
 E. & C. Bldg., Denver, Colo.
 Alpha Delta Phi.
- WILKINSON, P. H. B. S., E. M. Beta '04
 Supt. Shannon Copper Co., Clifton, Ariz.
- WING, H. W. Beta '08
 38 W. Main St., Ionia, Mich.
 Yuma, Ariz.

— WOODRICH, O. F. C. E. Alpha '08
 77 Spruce Place, Minneapolis, Minn.
 Co. Engr. Kettle River Co.
 954 Security Bldg. Minneapolis, Minn.
 Sigma Chi. Theta Nu Epsilon, S and S.

WORTLEY, R. B. Student Beta '12
 Houghton, Mich.

WOOD, E. C. B. S., E. M. Beta '09
 204 Chambers Ave., Peoria, Ill.
 Engr. El Rayo Mines Co. Apartado 5,
 Santa Barbara, Chihuahua, Mex.

— WRIGHT, H. H. M. E. Alpha '09
 120 Watson St., Detroit, Mich.
 Engr. Dept. Packard Motor Car Co.
 Detroit, Mich.
 Zeta Psi.

Rhombohedrons

BISHOP, G. C. Deceased Rhom.

CASSAR, GEO. CARTER Rhom. '06
 Scotland.

DOUGLAS, T. J. B. S. Rhom. '03
 475 Gramercy Place, Los Angeles, Cal.
 Supt. Construction, "W. A. Clark".
 Titanite Explosive Co., Corry, Penn.
 Office, 407 Grant Bldg. Los Angeles, Cal.

JOHNSON, J. S. Rhom. '04
 Calumet, Mich.

MERRY, H. M. Rhom. '07
 200 Edgevale Road, Roland Park, Baltimore,
 Md.
 Insp. Pole Line Constr.
 Nev. Cal. Power Co., Goldfield, Nev.
 544 Equitable Bldg., Baltimore, Md.

YOUNG, J. W.

Rhom. '05

HONORARY MEMBERS.

HINCKLEY, T. L.

B. S.

Alpha '08

745 Osceola Ave., St. Paul, Minn.

Sanitary Engr. W. City of Altoona, Pa.

KESNER, H. J.

Alpha

Pittsburg, Penn.

HARRY O. FRANK
1150 GRAIN EXCHANGE
MINNEAPOLIS 15, MINN.

