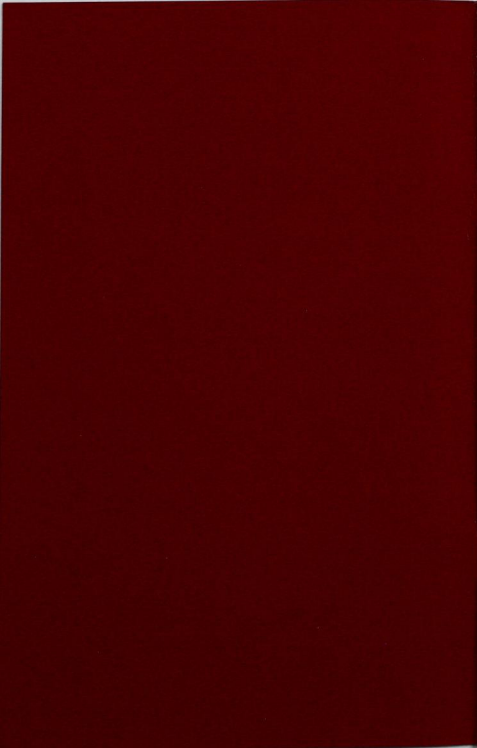


# Pledge and Membership Manual

A LIFETIME OF BROTHERHOOD





\_\_\_\_\_  
Name

\_\_\_\_\_  
Chapter

\_\_\_\_\_  
Initiation Date

\_\_\_\_\_  
Roll Number



## A Statement of Policy

(from the Charter of Alpha Chapter)

Theta Tau's purpose and object shall be to unite in fraternal fellowship such members of the engineering student body and profession as may be unanimously chosen by its founders, and thereafter by its student members; to promote the formation of lasting friendships among its brothers; to help its members professionally and personally; to search for the truth in science; to aid in the utilization of natural resources for the benefit of mankind; to inculcate the principles of professional integrity and personal honor among its members; to teach recognition of service to profession and country as a practical idealism; and to stimulate worthy engineering effort of any kind.

## THE CHAPTERS OF THETA TAU

**Alpha Chapter\***  
Founded October 15, 1904

**Beta Chapter\***  
Established March 26, 1906

**Gamma Chapter**  
Established November 8, 1907

**Delta Chapter**  
Established May 23, 1911

**Epsilon Chapter (Inactive)**  
Established May 4, 1911

**Zeta Chapter**  
Established April 17, 1912

**Eta Chapter (Inactive)**  
Established May 23, 1912

**Theta Chapter (Inactive)**  
Established May 26, 1914

**Iota Chapter (Inactive)**  
Established February 5, 1916

**Kappa Chapter (Inactive)**  
Established March 25, 1916

**Lambda Chapter (Inactive)**  
Established April 29, 1920

**Mu Chapter\***  
Established January 3, 1922

**Nu Chapter (Inactive)**  
Established January 1, 1922

**Xi Chapter\***  
Established January 13, 1923

**Omicron Chapter**  
Established February 3, 1923

**Pi Chapter (Inactive)**  
Established May 26, 1923

**Rho Chapter**  
Established February 16, 1924

**Sigma Chapter\***  
Established November 29, 1924

**Tau Chapter\***  
Established December 12, 1925

**Upsilon Chapter\***  
Established April 7, 1928

**Phi Chapter\***  
Established April 21, 1928

**Chi Chapter\***  
Established April 23, 1930

**Psi Chapter**  
Established May 7, 1932

**Omega Chapter\***  
Established March 26, 1932

**Gamma Beta Chapter**  
Established March 16, 1935

**Delta Beta Chapter**  
Established May 20, 1939

**Epsilon Beta Chapter\***  
Established May 19, 1951

**Zeta Beta Chapter (Inactive)**  
Established May 7, 1960

**Eta Beta Chapter\***  
Established May 13, 1961

**Theta Beta Chapter (Inactive)**  
Established March 2, 1963

**Iota Beta Chapter\***  
Established February 15, 1964

**Kappa Beta Chapter\***  
Established November 21, 1964

**Lambda Beta Chapter\***  
Established September 28, 1968

**Mu Beta Chapter\***  
Established August 2, 1969

**Nu Beta Chapter**  
Established April 26, 1975

University of Minnesota  
Minneapolis, Minnesota

Michigan Technological University  
Houghton, Michigan

Colorado School of Mines  
Golden, Colorado

Case Institute of Technology of Case Western Reserve University  
Cleveland, Ohio

University of California, Berkeley  
Berkeley, California

University of Kansas  
Lawrence, Kansas

Massachusetts Institute of Technology  
Cambridge, Massachusetts

Columbia University  
New York, New York

University of Missouri at Rolla  
Rolla, Missouri

University of Illinois  
Urbana, Illinois

University of Utah  
Salt Lake City, Utah

University of Alabama  
Tuscaloosa, Alabama

Carnegie-Mellon University  
Pittsburgh, Pennsylvania

University of Wisconsin—Madison  
Madison, Wisconsin

University of Iowa  
Iowa City, Iowa

University of Virginia  
Charlottesville, Virginia

North Carolina State University at Raleigh  
Raleigh, North Carolina

Ohio State University  
Columbus, Ohio

Syracuse University  
Syracuse, New York

University of Arkansas  
Fayetteville, Arkansas

Purdue University  
Lafayette, Indiana

University of Arizona  
Tucson, Arizona

Montana College of Mineral Science and Technology  
Butte, Montana

South Dakota School of Mines and Technology  
Rapid City, South Dakota

George Washington University  
Washington, D.C.

University of Louisville  
Louisville, Kentucky

Wayne State University  
Detroit, Michigan

Utah State University  
Logan, Utah

University of Houston  
Houston, Texas

University of Washington  
Seattle, Washington

University of Detroit  
Detroit, Michigan

Mississippi State University  
Starkville, Mississippi

Tennessee Technological University  
Cookeville, Tennessee

General Motors Institute  
Flint, Michigan

University of Wisconsin—Platteville  
Platteville, Wisconsin

\*Chapter House



## *Welcome to the Pledge of Theta Tau*

Congratulations on becoming a pledge of Theta Tau. This Manual is yours to keep so long as you are associated with the Fraternity.

To be invited to pledge is a significant honor. It means the members believe you to be of good character, firm convictions, and practical ideas; to be a capable student with a deep professional interest in engineering; to possess qualities of brotherhood deemed essential to the chapter, and an agreeable personality; and to have the potential of achieving success as a professional engineer. It is the duty of the members individually to consider carefully anyone proposed before voting. Only those receiving the unanimous vote of the chapter may be invited to pledge.

Acceptance of the invitation by you reflects a commendable desire to associate yourself closely with those of similar interests and qualities. It also places upon you the responsibility of conducting yourself so that the Fraternity will never regret the confidence it now has in you. Initiation into membership can come only after you have successfully completed your pledgeship period, proved yourself worthy of membership, and again received the unanimous secret vote of the chapter.

Your election as a pledge does not obligate the chapter to admit you to membership, or you to accept membership unless you truly desire it. The pledgeship period is a probationary and educational period. There is no stigma associated with failure to be initiated. Theta Taus believe that fraternity membership is a valuable aid, but not a requirement, for a successful life.

During your pledgeship period, you are obliged to accept the guidance and authority provided by your chapter in preparing you for membership, to wear the pledge insignia as directed, to complete satisfactorily pledge duties and projects assigned, to learn material contained in this manual and other information given you by the chapter, and to maintain academic eligibility for membership. You will be called upon to do nothing contrary to your obligations to God, your nation, or yourself, nor will you be publicly embarrassed. Membership in Theta Tau is not easily achieved, but those who have been initiated before you know membership to be fully worth the effort required. All who have been initiated as student members were once pledges like yourself.

Best wishes to you as you begin your pledgeship period – the first step toward a lifetime of Theta Tau membership.

# ***Greek Letter Organizations***

The year 1776 marked the birth of the United States and the beginning of the Greek-letter system in America with the founding of Phi Beta Kappa at the College of William and Mary in Williamsburg, Virginia. This organization, of course, has since evolved into the liberal arts honor society. The oldest existing general fraternity was founded in 1825, and the first professional fraternity in 1869.

A fraternity offers its members a lifelong bond of brotherhood and activities to promote their educational objectives. It usually maintains a chapter house or headquarters. Fraternities traditionally elect to membership by unanimous secret vote of their student members, exercising care to select those of high personal quality who are capable students, but not requiring the high scholastic average necessary for honor society membership. A professional fraternity confines its student membership to qualified students in an organized curriculum leading to a professional degree in that field. A society functions mainly to recognize achievement or interest in some field of education. A fraternity usually declares itself competitive with other similar fraternities and prohibits dual membership. However, fraternity members may also belong to honor and recognition societies.

A general characteristic of all Greek-letter organizations is that membership is by invitation only, and is for life; the members being united by a (usually secret) ritual first revealed to them at the time of initiation.

## ***Theta Tau    A National Engineering Fraternity***

The purpose of Theta Tau is to develop and maintain a high standard of professional interest among its members, and to unite them in a strong bond of fraternal fellowship. In addition to the desirable attributes of a general fraternity, it offers a common bond: an interest in and pursuance of engineering in its various branches.

Chapters of Theta Tau provide a program of activities to meet the social as well as the professional needs of their members. Student members are encouraged to participate also in technical societies, intramural competition, student government and other activities.

Theta Tau offers benefits which appeal alike to the student and to the alumnus. The Fraternity helps the member to make the transition from student days to years of professional practice ahead — from a closely-knit chapter to a vast body of alumni ready and willing to advise and assist him. There are many alumni in places of high responsibility throughout the world, all wearing the same badge and speaking the language of the engineering profession.

# A Brief History of Theta Tau

Theta Tau was founded as the "Society of Hammer and Tongs," on October 15, 1904, by Erich J. Schrader, Elwin L. Vinal, William M. Lewis, and Isaac B. Hanks, mining engineering students at the University of Minnesota. They agreed that character qualifications should have top priority in membership selection.

The Fraternity fulfilled the dream of its principal Founder, Erich Schrader, that there be established in engineering a fraternity similar to those already existing in law, medicine, and dentistry. Founder Schrader established a record of service unequalled in the Fraternity's history. He served as its first Grand Regent until 1919, and then for 35 years as Grand Scribe. At its Founders' Golden Anniversary Convention in 1954, the Fraternity established the position of Counsellor to be held only by him. His unselfish service to Theta Tau continued until his death in 1962, at the age of 81. The other Founders also maintained their interest in the Fraternity throughout their lives. The last, Brother Vinal, passed away in 1971.



First ΘΤ Badge

Brother Schrader was chiefly responsible for the Ritual, Constitution, and Bylaws adopted by the Founders. The first badge was a gold skull with the letters Θ and Τ on its forehead, and a crossed hammer and tongs beneath. The Constitution provided for the establishment of additional chapters at other leading engineering schools, and the Fraternity soon began to take on its national character.

Founder Hanks told his friend Robert Downing, a member of the Rhombohedron Club at Michigan College of Mines, of the new Fraternity. Further correspondence and an inspection trip by Brother Hanks led to the installation of the Rhombohedron Club (established 1903) as Beta Chapter in 1906.

Founder Lewis transferred to the Colorado School of Mines and there made contact with the Square Set Club which became Gamma Chapter in 1907. The Southwestern Alumni Association, the Fraternity's first, was established in Douglas, Arizona, in 1908. It is now centered in Tucson.

In 1911, representatives of the three chapters and the alumni association met at the University of Minnesota for the first national Convention. It was there that the name was changed to Theta Tau, a revised Ritual approved, and the present badge adopted. Perhaps most important for the Fraternity's future expansion, it was decided that Theta Tau would include all branches of engineering.

In the next two years, Delta, Epsilon, Zeta, and Eta Chapters were installed. The Second Convention was held in Houghton, Michigan. That Convention established *The Gear* as the national Fraternity's magazine and appointed Jack E. Haynes, Alpha '08, as its first Editor-in-Chief. Previously, the magazine had been published by Beta Chapter with Herman H. Hopkins as Editor. Brother Hopkins, a member of the Rhombohedron Club, had been initiated by Beta Chapter as an alumnus. He served until 1919 as the Fraternity's first Grand Scribe, and was later (1935) to be elected Grand Regent.

The Third Convention (1915) and the Fourth (1919) were held in

Cleveland, Ohio. Meanwhile, Theta, Iota, and Kappa Chapters were installed, and the Fraternity was well established. Elected as Grand Regent in 1919 was Dr. George W. Louderback, a charter member of Epsilon Chapter. During his tenure, until 1925, the rapid growth continued, with nine more chapters being installed.

J. Sidney Marine, Eta '21, was elected Grand Regent in 1925, the youngest one to serve in that position. In 1926, Donald D. Curtis, Omicron Hon. '19, was appointed Editor. He reorganized the magazine and established the membership files still in use. He, too, was later (1950-1952) to serve as Grand Regent.

Three more chapters were installed during the two terms of Dr. Richard J. Russell, Epsilon '19, as Grand Regent. He designed and issued the first 5,000 Theta Tau membership certificates, and also designed the Theta Tau officer robes.

Joseph W. Howe, Omicron '24, and Paul L. Mercer, Omicron '21, became Editors of *The Gear* in 1929 and shared this responsibility for 32 years, diligently handling its regular semiannual publication despite fluctuating economic conditions.

Fred Coffman, Lambda '32, served as Grand Regent during the depression years through 1935. Despite the condition, three more chapters were installed under his leadership. A period of very conservative extension began during the thirties with charters generally being granted only to petitioning locals which had been long established.

Regional Conferences were established during Brother Hopkins' term as Grand Regent. Dr. John M. Daniels, Nu Hon. '22, was the last to serve out his term as Grand Regent in the pre-World War II period. At the 1939 Convention, Russell G. Glass, the first of two charter members of Sigma Chapter to serve in the Fraternity's top position, was elected Grand Regent, and re-elected in 1941. In 1940, Grand Regent Glass made a nationwide tour visiting nearly every chapter and many alumni associations. At the 1941 Convention, the Fraternity began its tradition of honoring a student chapter delegate as the Convention's "Outstanding Delegate."

Because of World War II, Conventions were discontinued, chapters were reduced in size, but few went inactive during this period. Brother Hopkins was named Acting Grand Regent for the 27-month period that Grand Regent Glass served abroad in the Navy. When Conventions were resumed in 1946, Ralph W. Nusser, Zeta '28, was elected Grand Regent. During his term, the chapters were unusually large due to the influx of returning veterans. Norman B. Ames, the charter member responsible for Gamma Beta Chapter's affiliation with Theta Tau, was elected Grand Regent in 1948. He was later to succeed Founder Schrader as Grand Scribe.

Donald D. Curtis who had been appointed Editor in 1926, a few months after his initiation into the Fraternity, climaxed his years of continuous service as a national officer with his term as Grand Regent beginning in 1950. Another longtime Fraternity officer, Jamison Vawter, was elected Grand Regent for the term concluding Theta Tau's first half century. He had served for 27 years as Grand Treasurer, and was honored by being the first person after whom a Theta Tau Convention was named (1935).

The Founders' Golden Anniversary Convention was held in Minneapolis and was scheduled to include Founders' Day. It was a gala occasion marred only by the absence of Founder Schrader and Editor Howe due to illness. It was, however, attended by Founders Lewis and Vinal, and by many Past Grand Regents, including Brother Louderback.

A. Dexter Hinckley, Theta '27, was elected Grand Regent at the 1954 Convention. During his first term, Brother Ames, newly elected Grand Scribe, resigned to accept a Fulbright Lectureship in Ceylon. On his return, he visited a number of schools as Special Representative of the Executive Council in an effort to promote extension and visit chapters.

At the 1958 Convention, Charles W. Britzius was elected Grand Regent, the restriction of membership to those who were white was removed, and the Fraternity appropriated funds to support extension efforts by employing a Travelling Secretary. Robert E. Pope, Zeta '52, who had been appointed Grand Scribe in April, 1956, to succeed Brother Ames, and had been subsequently elected to that office, was named to the new position beginning in October, 1959.

Brother William E. Franklin, Zeta '57, was appointed Editor-in-Chief of *The Gear* in 1961 and served in that position until 1969, succeeding Brothers Howe and Mercer under whom he had recently served as Assistant Editor.

At the Convention in 1962, William K. Rey, Mu '45, was elected Grand Regent, and the Fraternity established the position of Executive Secretary to which the Executive Council appointed Brother Pope. For the first time, the Fraternity had a Central Office beginning in 1963. Brother Britzius, retiring as Grand Regent, was elected Grand Treasurer, a position he was to hold for twelve years. The decade of the sixties was one of moderate growth with seven chapters being installed. Annual alumni gifts, now so important to the Fraternity, were first solicited in 1964.

The Convention in 1966 elected C. Ramond Hanes, another charter member of Sigma Chapter, as Grand Regent. The next Convention (1968) elected an Epsilon Beta charter member as Grand Regent, Dr. Charles E. Wales. He was succeeded in 1972 by Dr. George G. Dodd, Zeta '60.

The Bicentennial Convention in 1976 elected Stephen J. Barth, a charter member of Lambda Beta Chapter as Grand Regent. In 1977, a plan adopted by the 1976 Convention was implemented. As a result, women first became eligible for membership under the Fraternity's laws. Through 1979, Theta Tau had initiated 22,645 members.

## ***Membership Requirements***

At the time of initiation, a prospective student member must be over eighteen years of age, eligible to pledge according to his university's rules, and enrolled in an engineering related curriculum leading to a bachelor's or higher degree which meets the criteria established in the Fraternity's laws. The prospective member must possess the qualities of brotherhood, as determined by the individual chapter, and demonstrate a professional attitude beneficial to Theta Tau. He must have an overall grade point average at least as high as that which will be required for graduation, and must not be in the first semester, trimester, or quarter of his freshman year, nor within six months of the end of his academic program. At the time of pledging, he must have completed a pledge form subsequently filed with the Executive Secretary; and, prior to initiation, passed a written pledge test (provided by the national Fraternity and by the chapter), and paid his national and local initiation fee and badge charge.

Pledges and members are strictly prohibited from belonging to any of the following professional fraternities:

Alpha Chi Sigma  
Alpha Rho Chi  
Kappa Eta Kappa  
Scarab

Sigma Phi Delta  
Sigma Rho  
Triangle

Before pledging another Greek-letter organization, a member should investigate its character, ascertain that he may lawfully join it, and consider carefully the assumption of the additional responsibilities of dual membership. There is far more satisfaction in being a fine member of one organization than in being a poor member of several.

## ***General Obligations of Membership***

It is an established principle of life that privilege increases obligation. The high privilege of Theta Tau membership is no exception. Since membership is for life, you should not embark upon it unless you believe Theta Tau deserves your continued support and loyalty.

Theta Tau expects you to obey its laws and customs, to adhere to its traditions, to pay promptly your bills, to attend regularly its meetings, to participate actively in its affairs, and faithfully to perform duties entrusted to you. Since it is national in scope, the Fraternity expects you to help perpetuate not only your own chapter, but also the Fraternity at large, and to help extend the Fraternity through the establishment of new chapters and alumni organizations.

As the strength of a fraternity rests largely on the character of its members and the close fraternal bond uniting them, you are expected to help maintain a high standard of membership through careful selec-

tion and education of prospective members. Members are expected to help one another professionally and personally in a practical way, and to accept the honest advice of their brothers. You are expected to make your career in engineering one of honor, and to conduct yourself at all times in a way that will reflect favorably on yourself, your profession, and your Fraternity. Naturally, the Fraternity members will hold you accountable for your conduct. Upon initiation, each member subscribes to an oath permanently binding himself to observe principles detailed in the Ritual and not to reveal to others the secrets of the Fraternity.

## Financial Obligations

The chapter officers will inform you of the financial obligations of membership which should be recorded in the spaces below:

Pledge Dues	\$ .....	per .....
Initiation fee	\$ .....	
Badge Charge	\$ .....	to \$ .....
Student Member Dues	\$ .....	per .....
Board and Room	\$ .....	per .....
Headquarters Fund	\$ .....	per .....
Other	\$ .....	per .....

The initiation fee includes chapter and national Fraternity charges. The latter includes a membership certificate and lifetime subscription to *The Gear of Theta Tau*. The chapter is obligated to collect the total initiation fee and badge charge prior to initiation, and has no authority to make special arrangements in individual cases. It should be noted that the badge charge depends upon the style selected, whether a guard (in a variety of styles) is desired, or whether the chapter provides the badge.

Student member dues are collected periodically by the chapter. The amount includes the national semiannual student dues beginning the term after initiation. Prompt payment of these and other financial obligations is a responsibility of membership.

Each chapter maintaining a house makes a charge covering costs involved for board and room provided a member or pledge.

Each chapter should collect regularly from each student member an obligatory payment into a headquarters fund to provide for the acquisition, remodeling, or equipping of a chapter headquarters or for replacing such a facility. In some chapters, this obligation will extend beyond graduation.

There are no national alumni dues, but a sizable number of alumni voluntarily continue their financial support of Theta Tau through periodic gifts to the Fraternity's Operating Fund, or through gifts to its Founders' Memorial Fund.

Special assessments are sometimes levied by individual chapters to finance unusual purchases of furnishings, special dinners, parties, etc. It is desirable to have the chapter dues established at a level which will make such special assessments unusual.



# ***Fraternity Membership Makes a Difference***

It is generally possible to distinguish a college graduate from one who has not had the opportunity of higher education. The same is true regarding a fraternity member and his contemporaries. This is to be expected, since each additional experience should help to develop the complete person. The pledge or member shares with others in Theta Tau the responsibility of encouraging his fellows to significant achievements. In return, the fraternity member should feel a greater motivation to contribute his efforts and resources to worthwhile endeavors, and to conduct himself always in an exemplary manner.

A member may expect that his Theta Tau affiliation might result in an opportunity to be considered for a campus or professional position. However, he should never expect to achieve or maintain such a position without deserving it through his abilities and efforts. He should always avoid seeking or accepting posts for which he is unsuited or for which he has insufficient uncommitted time.

The Fraternity has the responsibility of inspiring and challenging the member to his full professional development; of providing the atmosphere which recognizes academic achievement as an indication of likely future professional success, and requiring honesty in all efforts; of providing social activities, and requiring socially acceptable behavior, of providing regular opportunities for athletic expression, and recognizing physical fitness as an appropriate lifelong interest, of encouraging the free exercise of each member's individual religious beliefs; and of promoting an active participation in nonvocational fields such as the arts and government.

## ***Organization and Government***

Sovereignty in the Fraternity is vested primarily in the Convention, but between Conventions, this power resides in the Executive Council. The Executive Council comprises the Grand Regent (national president), Grand Vice-Regent, Grand Scribe (national secretary), Grand Treasurer, Grand Marshal, Grand Inner Guard, Grand Outer Guard, Delegate-at-Large, and Student Member. All are elected by majority vote of the Convention for a term of two years. All but the Student Member must be alumnus or honorary members of Theta Tau. The Grand Regent and Grand Vice-Regent are selected from those who have previously served on the Council. Functions of the Executive Council are executive, judicial, legislative, and visitorial.

The Executive Council appoints the Executive Secretary, Gear Board of Editors, Archivist, Historian, and Regional Directors from among the alumnus and honorary members of Theta Tau. The Executive Secretary is employed full time by Theta Tau and is responsible for the day to day operations of the of the Fraternity, and management of the Central Office. The Regional Directors are charged with maintaining close contact with the chapters in their Regions and co-ordinating the Regional Conferences.

The Grand Regent appoints the Chapter Advisers and national committee members, represents the Fraternity, and is charged with interpreting



its laws. The Chapter Adviser is chosen from among the alumni or honorary members of the Fraternity who are in the locale of the chapter, and serves as an official representative of the Executive Council on his campus, maintaining personal contact with the chapter officers and with chapter activities.

Each chapter is governed by its own bylaws in addition to the Theta Tau Constitution and Bylaws with which they must be consistent. Elected chapter officers are Regent, Vice-Regent, Scribe, Treasurer, Corresponding Secretary, and such others as the chapter bylaws may provide. The Regent usually appoints the ritualistic officers: Marshal, Inner Guard, and Outer Guard, and chapter committees. Much of the chapter's work is accomplished through committees with specific responsibilities.

## ***National and Regional Meetings***

The Theta Tau Convention is held biennially, usually during Christmas week of even years, providing an opportunity for each chapter and alumni association to be represented officially in adopting legislation and guiding the Fraternity's progress. Theta Tau pays full expenses of one student delegate and partial expenses of one alternate from each chapter represented at the Convention.

During alternate school years between Conventions, a Regional Conference is held in each of the four geographical Regions. The Regional Conference provides an excellent opportunity for sharing ideas and developing fraternal friendships with those from other chapters. Informal social and athletic activities involving nearby chapters are encouraged.

## ***Awards***

At each Convention, the Erich J. Schrader Award is presented to the chapter judged most outstanding during the previous biennium as indicated by the information contained in its Annual Report. This award is symbolized by a travelling heroic-sized plaque, and a certificate presented to the winning chapter for framing. The Founders' Award goes to the chapter making the greatest improvement. There are also awards to the chapters having the best display and best presentation at the Convention; and annual awards for best newsletters and best photographs.

The highest award the Fraternity confers upon a student member is the designation as a Convention's Outstanding Delegate, a selection made by the student delegates to the Convention.

Also at the Convention, the Executive Council, on behalf of the Fraternity, may present one or more citations to members in recognition of their valuable service to Theta Tau.

Two travelling plaques are presented at each Regional Conference. One is awarded that chapter making the best presentation on an assigned topic, and the other to the chapter whose members in attendance represent the greatest number of member-miles travelled to the Conference.

# Literature

## MAGAZINE

The national magazine of the Fraternity is *The Gear of Theta Tau*. It was first published by Beta Chapter in 1908 under the name of *Hammer and Tongs*. The following year the name was changed to that which is still in use. Issued twice annually (spring and fall), the magazine contains articles of interest about Theta Tau and the Greek letter system, biographical sketches of distinguished alumni, chapter letters, alumni notes, editorials, and other information issued by the Executive Council.

The magazine is provided for life to each member in good standing whose current address is on file with the Theta Tau Central Office. Each student member's copy is sent to his chapter's address. When he becomes an alumnus, the member begins receiving his copy at his individual address provided by him or his chapter. Changes of address should be reported promptly so issues will not be missed.

## CONSTITUTION AND BYLAWS OF THETA TAU

A permanently bound volume bearing this title is loaned to each chapter and national officer. Although for members only, its content can be explained in a general way to prospective members. A portion of the laws is to be read aloud in each regular chapter meeting. In addition, a member may borrow the chapter's copy from the Regent for study.

## THETA TAU RITUAL

Woven into the Ritual are the ideals and secrets of the Fraternity revealed first to a member during his Initiation Ceremony. The Ritual Book is a permanently bound volume loaned to each chapter and national officer. It also contains other Theta Tau ceremonies, information for members and officers, and an extended statement of Theta Tau Policy. A member may study the chapter's copy of the Ritual in the presence of the Regent. At the first chapter meeting after his initiation, the new member will be called upon to demonstrate a thorough knowledge of the secrets in the Ritual. Therefore, a closed session for reviewing these should be held promptly after each Initiation Ceremony.

## OTHER PUBLICATIONS

The fraternity provides additional publications for use by members and to inform others about Theta Tau. Included are the officers manual, song booklet, rushing booklet, extension booklet, parliamentary procedure booklet, and other manuals provided as guides in specific fields of Fraternity activity. Copies are available from the Theta Tau Central Office.



### FLAG

The Theta Tau flag is a rectangle arranged horizontally and divided into four equal quadrants. The upper right and lower left quadrants are fields of gold; the others are fields of dark red. On the upper left quadrant is the coat of arms in full color, and on the lower right quadrant the letters Θ and T in gold.

### COAT OF ARMS



This insigne comprises three elements: a crest (hand grasping hammer and tongs), a shield, and a ribbon scroll. The coat of arms appears on the flag and seal of the Fraternity. It may also be reproduced on jewelry, or in the form of a decal or blazer emblem to be used by members only.

Colors in the coat of arms are as follows: The hammer, tongs, gear wheels, sleeve, and letters Θ and T are black. The hand is flesh colored, and the bridge gray. The torsade below the clasped hands has alternating dark red and gold strands. The chief (area behind the gear wheels) is dark red, and the remainder of the insigne is gold.

### SEAL

The Grand Seal of Theta Tau, shown in enlarged reproduction on the first page of this Manual, is affixed to official instruments issued by and under the authority of the Executive Council of Theta Tau. The Grand Marshal's Seal, of similar design, is impressed on each certificate of membership.

## **Official Jewelry**

Items designated as official jewelry in the Tneta Tau Bylaws (pledge insigne, member's badge, sister pin, and official recognition button) may be ordered only from the official jeweler through the Executive Secretary.

### **Pledge Insigne**

A triangular gold shield with a dark red gear wheel in its field (left item, second row), this insigne is available either as a button or pin. It is the property of the chapter and is loaned to the pledge. It must be returned when one is initiated, or for any other reason ceases to be a pledge.

### **Member's Badge**

The official badge (right item, third row) has the form of a gold gear wheel with crossed hammer and tongs and the letters Θ and T. In the center is a dark red garnet. The rim of the wheel is jeweled with pearls. The design is available in two models: with close set or crown set pearls. Each student member must have a badge to wear. It is worn on the left side of the chest on shirt, sweater, blouse, dress, or suit vest. It should never be worn on a coat or jacket.

### **Sister Pin**

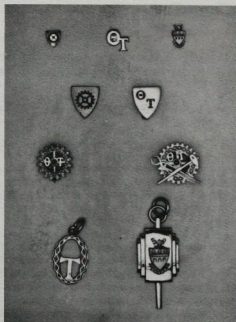
The sister pin (left item, third row) has the form of a gold gear wheel bearing the letters Θ and T. It is smaller than the official badge, and is similarly jeweled. It does not display the crossed hammer and tongs. This is the official piece of jewelry used in pinning, and may therefore be worn by female relatives and pin mates of members. The official badge may not be used in this way; but the sister pin is accorded the same respect as the official badge.

### **Official Recognition Button**

The official recognition button (left item, first row) bears the same design as the pledge insigne but is smaller in size. Recognition buttons may be worn by members only. They are worn on the upper tip of the left coat lapel.

## **Other Theta Tau Jewelry**

The Greek letter monogram recognition button (center item, first row) and the coat of arms recognition button (right item, first row) may be worn by members who prefer these to the official recognition button.



### Colony Pin

The colony pin (right item, second row) is the insignie designed for use by members of Theta Tau colonies. It bears the Greek letters  $\Theta$  and T in dark red on a triangular gold shield.

### Alumni Charm

This gold charm (left item, fourth row) may be worn by Theta Tau alumni on key chains or in other suitable ways.

### Annual Award Key

This gold key (right item, fourth row), when properly engraved on the back, may be presented by a chapter to a member in recognition of service or achievement. Members of chapters not using the key in this way may purchase it to wear on a key chain or in other suitable ways.

### Founders' Size Coat of Arms

This insignie (1½ inches in height) is available with or without a ring at the top for use by members as an item of jewelry or to decorate accessories such as jewelry cases and desk sets.

# Symbols

## COLORS

The official Theta Tau colors are dark red and gold. This combination is appropriate on any item of significance to the Fraternity.

## GEM

The official gem of the Fraternity is the dark red garnet (gär' net).

## FLOWER

The flower of Theta Tau is the Jacqueminot (Jak' mi nō) or dark red rose, named for a French general.

# Forms

## PLEDGE FORM

A standard form must be fully completed by each prospective member of the Fraternity at the time he accepts an invitation to pledge. A slightly different form is completed by those who will become alumnus or honorary members. The form is filed with the Executive Secretary upon completion. After initiation, it becomes a permanent record of the individual member in the Fraternity's Archives. The questions on the form provide the Fraternity with needed statistical information; and inform the candidate as to the Fraternity's aims and ideals, and some of the obligations he will assume by reason of membership.

## INFORMATION CARD

Also at the time of pledging, each prospective member is obliged to complete, to the extent possible, an information card providing a continuing record for the chapter's files. This card should be brought up to date at initiation and again at graduation.

## ROLL BOOK PAGE

During his initiation into Theta Tau, each member signs a page in his chapter's permanent roll book. Pages of different design are provided for the roll books of Theta Tau colonies.

## MEMBERSHIP CERTIFICATE

To each initiate whose records in the Theta Tau Central Office are in order, the Fraternity issues a "shingle" or certificate of membership attesting to his initiation and bearing his initiation date and the signatures of the Grand Regent and the Grand Marshal.

## OTHER FORMS

Various forms designed for use by chapter officers in making reports and placing orders with the Theta Tau Central Office are described in the Chapter Officers Manual.

# *Theta Tau Traditions*

## **FOUNDERS' DAY**

Each Chapter commemorates Founders' Day with an appropriate event on or near October 15 each year. All members (including alumni) are obliged to join with their own chapter or with other members living in their vicinity in celebrating this event. If this is impossible, each member should write a letter to reach his own chapter before October 15.

## **CHAPTER'S ANNIVERSARY**

Each chapter is expected to observe each year the anniversary of its installation as a Theta Tau chapter. In addition, most chapters follow traditions specific to their own heritage which their members should know.

## **PROFESSIONAL DEVELOPMENT**

In accord with the purpose of Theta Tau, each chapter is expected to hold regularly scheduled professional development meetings for its own members and pledges, and sometimes for all engineering students.

## **NATIONAL ENGINEERS' WEEK**

As a part of this event sponsored annually in February by the National Society of Professional Engineers, each chapter is expected to sponsor an appropriate event on its own campus.

# *Theta Tau Practices*

Only those planning to complete requirements for an engineering-related degree may be initiated as student members. However, if a member transfers out of engineering as a student or as an alumnus this does not affect his lifetime membership in Theta Tau.

Since Theta Tau is an engineering fraternity, graduate students may be initiated; and those initiated as undergraduates are encouraged to remain as student members if they subsequently enroll in graduate work. It is assumed that one initiated as a student will remain active throughout his college career. If a student member wishes to be granted alumnus status prematurely, he must first request this of his chapter which must follow the procedure outlined in the Theta Tau Bylaws before he can be officially granted such status. The member must continue to pay his semiannual dues during the term in which he is granted alumnus status prematurely.

A student member transferring to another university with a Theta Tau chapter is encouraged to affiliate with that chapter officially in accord with the procedure detailed in the Theta Tau Bylaws.



To assure a close bond among its members, the size of a chapter is limited to fifty student members at any one time. The limit may be exceeded only with prior consent of the Grand Regent or Executive Council.

A chapter may initiate only one honorary member per fifty other initiates. The distinction of honorary membership is reserved generally for those practicing or teaching engineering who are judged to have a great interest in Theta Tau and who can be expected to be of significant service to the Fraternity. Election requires unanimous vote of the student members, and nearly unanimous vote of the chapter's alumni who must be contacted and provided with complete information on the proposed candidate in accord with the Theta Tau Bylaws.

The only exception to the principle of lifetime Theta Tau membership occurs in the rare case of a member found guilty of unfraternal conduct or of violation of the laws and customs of Theta Tau. In accord with the detailed procedure in the Theta Tau Bylaws, a chapter may suspend a member. His case then comes before the Convention which may either expel him from membership or reinstate him. Upon being suspended, a member must surrender his badge and other Theta Tau insignia and literature, retaining only the right of appeal. There is no provision for resignation from the Fraternity.

## ***After Initiation***

Initiation into Theta Tau should properly be viewed not as the goal of pledgship, but rather as the beginning of a lifetime of brotherhood in an engineering atmosphere.

To an even greater extent than a pledge, a member will represent to everyone else the Fraternity to which he belongs. And, as a member, he has a greater opportunity to improve the Fraternity through his proposals and his efforts. Gradual improvement in quality of membership is possible only through making sure that each successive generation of student members, through selection and preparation, is better than the former.

The new initiate should not anticipate making sweeping changes in his chapter or his Fraternity. But persistent, unselfish efforts to present well-formulated ideas, and then to carry them forward are sure to benefit the Fraternity. The strength of any fraternity cannot be measured in the unanimity of opinions expressed in meetings, but in the devotion with which each member pursues the course decided upon by the majority.

A feeling of identification with his Fraternity should be reflected in a member's conversation when he refers always to Theta Tau as "my Fraternity," and says "we" and "our" rather than "you" and "your" when talking with his brothers anywhere about Theta Tau.



## *Professional Growth*

Professional development is a lifetime process begun while a student, and continuing through the engineer's entire professional career. The development of technical and personal qualifications and adherence to professional standards are essential to the goal of achieving professional recognition. Therefore, as early as possible, you should establish good habits of study, of thought, of friendship, and of life which will promote your personal intellectual and social development and contribute positively to your future success.

A professional person must associate and communicate with others (within and outside his profession) on both technical and social levels. His effectiveness as an engineer may depend upon his ability to do so. One who fails to observe accepted social customs, through ignorance or negligence, may well be hindered in communicating technical ideas because his thoughtlessness has antagonized another. Due to the importance of these matters to the success of a professional engineer, every member and pledge is urged to study the manual on social customs available from the Theta Tau Central Office.

After completing a rigidly established curriculum centered in engineering, the young graduate must establish his own program of personal development to achieve his own future objectives. In establishing such a program, consideration should be given to several areas of growth. The young engineer should seek to become acquainted with his employer's objectives and to gain a broad understanding of the demands of his profession as well as learning the specific details of his individual job.

Beyond his working hours, the young engineer should give attention to continuing education: further college education in another field, or on a graduate level in his own field, and informal study on his own to keep abreast of developments in his profession. To establish proper professional identification, the engineer should be an active participant in the affairs of the local and national societies in his field. He should qualify as soon as possible for professional registration, and observe exemplary personal conduct. Every professional should assume his full responsibilities as a citizen by making a personal contribution to the affairs of his community. The young engineer should embark upon a program of planned reading in books of general, professional, and technical interest to broaden his base of knowledge beyond his formal education and personal experience.

The young engineer should make a periodic appraisal of his development, and make an effort to improve himself in areas of relative weakness which are revealed.

## Beyond Graduation

Membership in Theta Tau provides benefits for the alumnus as well as for the student member. Upon leaving school, the member becomes a part of the larger body of successful Theta Tau alumni located throughout the world — members ready and willing to advise and assist.

Beginning in 1908 with the establishment of Theta Tau's first alumni association, there has been an opportunity for alumni to participate in alumni clubs and associations located in major centers of engineering activity. Membership in each alumni organization is open to any Theta Tau alumnus living in the area it serves. Upon locating in a new area after graduation, each member should contact the local Alumni Field Secretary or the officers of an alumni organization shown on the list in *The Gear*, or if none is nearby, contact the Executive Secretary for information on organizing an alumni club, and the names and addresses of Theta Tau alumni in the area.

There is a vast opportunity for service to Theta Tau by alumni besides that of participating in an alumni organization. The Executive Secretary welcomes an expression of interest from any alumnus willing to serve the Fraternity in promoting alumni activities in his area, in advising a nearby chapter, in providing contacts or help in establishing new chapters, in serving as an Alumni Field Secretary, on a national Theta Tau committee, or as a national officer. As in the case of a student member, the alumnus actively involved with Theta Tau affairs will experience the greatest benefits of membership.

### THE OPEN MOTTO OF THETA TAU

*Whatsoever thy hand findeth to do, do it with thy might; . . .*

ECCLESIASTES 9:10.

## NATIONAL OFFICERS

### EXECUTIVE COUNCIL

Chapter

Year

Grand Regent .....

Grand Vice-Regent .....

Grand Scribe .....

Grand Treasurer .....

Grand Marshal .....

Grand Inner Guard .....

Grand Outer Guard .....

Delegate-at-Large  
( Immediate Past Grand Regent ) .....

Student Member .....

### APPOINTED OFFICERS

Executive Secretary .....

Board of Editors:

....., Editor-in-Chief

Archivist .....

Historian .....

Regional Directors:

Central .....

Eastern .....

Southern .....

Western .....

## THIS CHAPTER'S HERITAGE

..... Chapter ..... Region

Original name (if any) .....

Date Established ..... at ..... (school)

Address .....

City ..... State ..... Telephone No. ....

Chapter Adviser .....

Other chapters in this Region .....

Past Grand Regents from this chapter: .....

.....  
Charter Members. Indicate those deceased by an asterisk.

**Brief History:**

## STUDENT AND FACULTY MEMBERS

### Chapter Officers:

Name	Class Year	Major	Office
------	------------	-------	--------

### Other Student Members:

Name	Class Year	Major	Name	Class Year	Major
------	------------	-------	------	------------	-------

### Theta Tau Faculty Members on Campus:

Name	Chapter Year	Position	Department
------	--------------	----------	------------

## THIS PLEDGE CLASS

Pledges

Class Year

Major

Office

## THE GREEK ALPHABET

(with pronunciations used in Greek letter organization names)

$\mathbf{A}^{\text{alpha}}$   
al' fə

$\mathbf{B}^{\text{beta}}$   
bā' tə

$\mathbf{\Gamma}^{\text{gamma}}$   
gam' ə

$\mathbf{\Delta}^{\text{delta}}$   
del' tə

$\mathbf{E}^{\text{epsilon}}$   
ep' si lon

$\mathbf{Z}^{\text{zeta}}$   
zā' tə

$\mathbf{H}^{\text{eta}}$   
ā' tə

$\mathbf{\Theta}^{\text{theta}}$   
thā' tə

$\mathbf{I}^{\text{iota}}$   
ī ō' tə

$\mathbf{K}^{\text{kappa}}$   
kap' ə

$\mathbf{\Lambda}^{\text{lambda}}$   
lam' də

$\mathbf{M}^{\text{mu}}$   
mū

$\mathbf{N}^{\text{nu}}$   
nū

$\mathbf{\Xi}^{\text{xi}}$   
zī; kzē

$\mathbf{O}^{\text{omicron}}$   
ō mī' kron  
om' i kron

$\mathbf{\Pi}^{\text{pi}}$   
pī

$\mathbf{P}^{\text{rho}}$   
rō

$\mathbf{\Sigma}^{\text{sigma}}$   
sig' mə

$\mathbf{T}^{\text{tau}}$   
tō

$\mathbf{Y}^{\text{upsilon}}$   
ūp' si lon

$\mathbf{\Phi}^{\text{phi}}$   
fī; fē

$\mathbf{X}^{\text{chi}}$   
kī

$\mathbf{\Psi}^{\text{psi}}$   
sī

$\mathbf{\Omega}^{\text{omega}}$   
ō' me gə



