

# Pledge and Membership Manual

## Theta Tau Fraternity



**A LIFETIME OF BROTHERHOOD**

## THE CHAPTERS OF THETA TAU

<b>Alpha Chapter*</b> Founded October 15, 1904	<b>University of Minnesota</b> Minneapolis, Minnesota
<b>Beta Chapter*</b> Established March 26, 1906	<b>Michigan College of Mining and Technology</b> Houghton, Michigan
<b>Gamma Chapter</b> Established November 8, 1907	<b>Colorado School of Mines</b> Golden, Colorado
<b>Delta Chapter</b> Established May 23, 1911	<b>Case Institute of Technology</b> Cleveland, Ohio
<b>Epsilon Chapter</b> Established May 4, 1911	<b>University of California</b> Berkeley, California
<b>Zeta Chapter*</b> Established April 17, 1912	<b>University of Kansas</b> Lawrence, Kansas
<b>Eta Chapter (Inactive)</b> Established March 23, 1912	<b>Massachusetts Institute of Technology</b> Cambridge, Massachusetts
<b>Theta Chapter</b> Established May 26, 1914	<b>Columbia University</b> New York, New York
<b>Iota Chapter</b> Established February 5, 1916	<b>Missouri School of Mines and Metallurgy</b> Rolla, Missouri
<b>Kappa Chapter (Inactive)</b> Established March 25, 1916	<b>University of Illinois</b> Urbana, Illinois
<b>Lambda Chapter</b> Established April 29, 1920	<b>University of Utah</b> Salt Lake City, Utah
<b>Mu Chapter</b> Established January 3, 1922	<b>University of Alabama</b> Tuscaloosa, Alabama
<b>Nu Chapter (Inactive)</b> Established January 1, 1922	<b>Carnegie Institute of Technology</b> Pittsburgh, Pennsylvania
<b>Xi Chapter</b> Established January 13, 1923	<b>University of Wisconsin</b> Madison, Wisconsin
<b>Omicron Chapter</b> Established February 3, 1923	<b>State University of Iowa</b> Iowa City, Iowa
<b>Pi Chapter</b> Established May 26, 1923	<b>University of Virginia</b> Charlottesville, Virginia
<b>Rho Chapter</b> Established February 16, 1924	<b>North Carolina State College of Agriculture &amp; Engineering</b> Raleigh, North Carolina
<b>Sigma Chapter*</b> Established November 29, 1924	<b>Ohio State University</b> Columbus, Ohio
<b>Tau Chapter</b> Established December 12, 1925	<b>Syracuse University</b> Syracuse, New York
<b>Upsilon Chapter*</b> Established April 7, 1928	<b>University of Arkansas</b> Fayetteville, Arkansas
<b>Phi Chapter*</b> Established April 21, 1928	<b>Purdue University</b> Lafayette, Indiana
<b>Chi Chapter*</b> Established April 23, 1930	<b>University of Arizona</b> Tucson, Arizona
<b>Psi Chapter</b> Established May 7, 1932	<b>Montana School of Mines</b> Butte, Montana
<b>Omega Chapter*</b> Established March 26, 1932	<b>South Dakota School of Mines and Technology</b> Rapid City, South Dakota
<b>Gamma Beta Chapter</b> Established March 16, 1935	<b>The George Washington University</b> Washington, D.C.
<b>Delta Beta Chapter*</b> Established May 20, 1939	<b>University of Louisville</b> Louisville, Kentucky
<b>Epsilon Beta Chapter*</b> Established May 19, 1951	<b>Wayne State University</b> Detroit, Michigan
<b>Zeta Beta Chapter</b> Established May 7, 1960	<b>Utah State University of Agriculture and Applied Science</b> Logan, Utah
<b>Eta Beta Chapter*</b> Established May 13, 1961	<b>University of Houston</b> Houston, Texas
<b>Theta Beta Chapter</b> Petition Approved, 1962 Convention	<b>University of Washington</b> Seattle, Washington

\* Chapter House

## WELCOME TO THE PLEDGE OF THETA TAU

YOU ARE NOW A PLEDGE of one chapter of Theta Tau, national *professional engineering* fraternity.

Your selection in itself was a significant honor because a pledge is carefully chosen for his character, integrity, personality, professional interest, ability as a student, and the potential of developing into a top rate man and engineer. It is the duty of the members collectively and individually to consider a man carefully before an invitation to pledge is extended. This invitation can be extended only after a unanimous secret vote of the members.

Your acceptance of this invitation and its token, the pin of a pledge, places squarely upon you the responsibility of so conducting yourself that Theta Tau Fraternity will never regret the confidence it now places in you.

You can be initiated into full membership only after you have served the period of pledgship set forth in the laws of the chapter of which you are a pledge, and you have proved yourself worthy of membership. Your election as a pledge does not obligate the chapter to admit you to membership or you to accept membership unless you truly desire it. During your pledgship you will be obligated to accept the guidance and authority which the chapter will provide in preparing you for membership, which should have real meaning to you as a prospective member. You will not be called upon to do anything contrary to your obligations to God, your country, or yourself, nor will you be publicly embarrassed.

When your pledgship period is complete and you have fulfilled all of its obligations, your name will be presented to the chapter again, this time for election to full membership. This election must also be by unanimous secret vote, according to the Constitution of Theta Tau.

Weigh carefully the responsibility and dignity of your pledgship and strive to fulfill the requirements of a pledgeman as they are given to you by the chapter and its members, who will discharge their responsibility to you.

Theta Tau has a prescribed Ritual into which are woven all of the ideals and character of the Fraternity. These can be revealed only to properly elected men at the time of their initiation and afterwards as members.

However, many facts of interest about Theta Tau can be given to you and you will be expected to know them. Prior to initiation you will be required to pass an examination on information contained in this Manual and on information which will be given you about the local chapter. Therefore, study this information with diligence.

## A BRIEF HISTORY OF THETA TAU

Theta Tau was founded at the University of Minnesota on October 15, 1904, by Erich J. Schrader, Isaac B. Hanks, William M. Lewis, and Elwin L. Vinal.

The original name of the group was the "Society of Hammer and Tongs." It was formed by Erich Schrader to fulfill a dream that engineers have a professional fraternity similar to those already existing in law, medicine, and dentistry.



The group was active and soon had a Constitution, Ritual, and a badge. The first badge was a skull with the letters Θ and T on its forehead and a crossed hammer and tongs beneath.

By 1911 there were three chapters and the first Convention was held, when the name was changed to Theta Tau Fraternity and a revised Ritual was adopted. The present badge was adopted in the early years.

The four Founders were students in mining engineering, but the original intent was that Theta Tau should include men from all branches of engineering and geology.

The Fraternity enjoyed a moderate healthy growth in the years to follow, particularly up to the mid-thirties, and at present there are 27 active chapters in leading engineering schools. Three other chapters are inactive because of local circumstances. An active campaign to grow further using the services of a member employed full time by the Fraternity (currently as Executive Secretary) was begun in 1959. At the time of publication there was a total of 16,651 initiated members.

To the Founders and early members of Alpha, Beta, and Gamma Chapters must go the credit for a well-laid foundation; and to their successors who willingly contribute their time and ingenuity to the building of the Fraternity must go the credit for the effective structure of the present national organization. On such strong foundations Theta Tau has been able to withstand wars, economic depressions, and many other adversities which too often bring about the collapse of fraternal structures.

## MEANING AND PURPOSES

The purpose of Theta Tau is "to develop and maintain a high standard of professional interest among its members, and to unite them in a strong bond of fraternal fellowship."

Just as engineering is defined as a profession of creation, so might Theta Tau, an engineering fraternity, be called a fraternity of creation. For you will come to discover in the course of time that this Fraternity creates in its men not alone the desire to master the principles and problems of the profession, but to regard the brothers in such a manner

as to bespeak loyal cooperation and courageous treatment of difficult situations.

Theta Tau is not purely a social fraternity, but its chapters do aim to organize the social as well as the professional life of its members and establish a brotherhood among engineers. It is not an honor society and our Constitution expressly prohibits any chapter from establishing a scholastic requirement other than that established by the college for satisfactory scholastic standing and for graduation. These regulations also apply to graduate students who are eligible for active membership in Theta Tau. It follows that since Theta Tau is a professional fraternity all of its active members should strive to be good students and thereby show their interest in their chosen profession. A chapter in good scholastic standing has the favorable support of the faculty at all times.

Theta Tau is specifically a professional fraternity and is different from the academic or social fraternity. In addition to the desirable attributes of a social fraternity, Theta Tau has one common bond, an interest in and pursuance of engineering in its several branches. It differs from the honor society in that its men, while meeting scholastic requirements indicative of future professional achievement, are not chosen principally by these standards.

Theta Tau offers a program which appeals alike to the undergraduate and the alumnus. By the maintenance of active chapters on well-selected campuses, the Fraternity can most effectively aid in developing young engineers and building up a worthy body of alumni. When student days are ended it bridges the chasm between them and the long years of professional practice ahead. As the young man passes through the period of transition from the warm familiar campus to the world of business and commerce, he likewise passes from a chapter of understanding, loyal brothers into a vast alumni chapter of successful men ever ready and willing to advise and assist him. There are thousands in places of high responsibility throughout the world, all wearing the self-same badge and speaking the language of the engineering profession.

## **MEMBERSHIP REQUIREMENTS**

Theta Tau is a national professional engineering fraternity which limits its membership to males who possess the qualities of brotherhood as determined by the individual chapters; who demonstrate a professional attitude beneficial to Theta Tau; and who are not affiliated with any other engineering fraternity whether or not such fraternity claims to be purely social.

To be initiated, a prospective member must be over 18 years of age, regularly enrolled, and pursuing a degree (graduate or undergraduate) in a field of engineering recognized by ECPD or in geology. In addi-

tion he must have received the unanimous, favorable, secret vote of the chapter; must have an overall grade point average at least as high as that which is required for graduation; must not be within six months of the end of his academic program; must have properly completed a pledge form at the time of his pledging; must have passed a pledge test (furnished by the national Fraternity and the local chapter); must have paid all national and local initiation fees and the purchase price of a Theta Tau badge *before initiation*. There are no exceptions to the requirements in these two paragraphs.

The size of a chapter is limited to 50 active members at any one time. Exceptions may be made only with the consent of the Grand Regent. This limit on membership helps assure a closer bond of brotherhood among the members.

## YOUR FINANCIAL OBLIGATIONS

All active members and pledges alike are expected to discharge their financial obligations promptly. It is imperative that you know what your obligations are. The chapter will tell you your obligations for both national and local fees and dues. You must be prepared to meet the following at:

	_____ Chapter
Pledge Dues	\$_____ per _____ (month, quarter, or semester)
National and Local Initiation Fees	\$_____
Badge (required)	\$_____ to \$_____
Active Membership Dues	\$_____ per _____
Room and Board	\$_____ per _____
Building Fund Notes	\$_____ per _____
Other	\$_____ per _____

### PLEDGE DUES

It is the custom of most chapters to collect a nominal monthly, quarterly, or semester fee from all pledges.

### NATIONAL AND LOCAL INITIATION FEES

When you have successfully completed your work as a pledgeman and have been unanimously elected to active membership in the chapter, you will be called upon to pay *in advance of your initiation* the specified charge designed to cover all local and national initiation fees,

the cost of your badge, and a life subscription to our national publication, *The Gear of Theta Tau*. (Note that the price of the badge varies with the style selected.) *The chapter is compelled to collect this fee in full and in advance and has no authority to make special arrangements in individual cases.*

#### ACTIVE MEMBERSHIP DUES

After your initiation and as long as you remain an active member of your chapter, you will be assessed active membership dues at regular intervals. Whatever this amount, the chapter will pay a prescribed portion of it into the national treasury as your annual dues. National dues for actives are currently \$7.50 per semester or \$15.00 per school year.

The chapter as a whole is held responsible for the initiation fees and the semiannual dues of active members. Semiannual dues are not payable by new initiates *for the term in which they were initiated*. If you do not pay your dues promptly, the other active members must pay them. No member of Theta Tau should expect his brothers to pay his fees.

#### ROOM AND BOARD

If your chapter maintains a house where room and board are available to active members and pledges, you will be expected to pay the prescribed charges for such services. These figures will vary depending upon the local conditions.

#### BUILDING FUND NOTES

Many chapters accumulate building funds by accepting notes from new initiates bearing due dates during the member's undergraduate days or after his graduation.

#### SPECIAL ASSESSMENTS

Although the national treasury does not levy this type of charge against individual members at any time, it is the custom of some chapters to cover in this manner unusual purchases of furnishings, athletic fees, chapter-sponsored parties, dinners, and entertainment.

*A complete understanding of your future financial relations with your chapter is of inestimable importance.* Should there be doubt on your part concerning any phase of this question, the time to dispel such doubts is *now*. The Regent and Treasurer of your chapter are properly informed on this subject and will be happy to discuss with you in confidence any point in question.

#### OTHER OBLIGATIONS OF MEMBERSHIP

It is an established principle of life that privilege increases obligation. The high privilege of membership in Theta Tau is no exception to this axiom, for you will discover as you live your life in the Fra-



ternity that your obligations are without end. Your good service should begin with the youngest pledge of the chapter and extend throughout your chapter into the national fraternity and to every alumnus with whom you come in contact.

Every pledge and active member of the chapter will expect you to give any assistance within your power. Such opportunity for service may present itself in the chapter house, on the campus, or in the classroom. You will perhaps be called upon to assist a brother in the solution of a new or difficult problem; or again you might be asked to make some sacrifice to save the life of a brother. Every real Theta Tau stands ready and eager to discharge such obligations to his brothers.

The chapter will expect you to attend all meetings and to take an active interest in the business transacted therein; use your time and ingenuity in furthering the development of its program; acknowledge all constituted authority of its duly elected officers; obey the laws under which it is chartered and operates; revere its traditions; and honor the date of its founding. When you become an alumnus the chapter will expect to hear from you concerning your business location, your honors, and the development of your career.

The Fraternity, as constituted nationally, lays upon you the necessity of making your career in the profession one of honor to all Theta Taus. Wherever you find alumni of your own or any other chapter, you are expected to identify yourself to the extent of aiding in the formation of alumni clubs or affiliating with those already existent. You should be constantly on the watch for capable young men entering an engineering course in schools where there are chapters of Theta Tau, in order that you may inform the chapter about them. Similarly, you should stand ready to assist the national officers in the establishment of a new Theta Tau chapter at any nearby accredited engineering school.

On October 15 of each year celebrations are held throughout the country to recall the founding of our Fraternity and to honor the names of the Founders of Theta Tau. You are requested to honor this date in some manner, no matter where you may be situated.

Members of Theta Tau are obligated to send some form of greeting to their chapters on or about October 15. If several are located in the same vicinity they could gather for an informal meeting.

It is in this manner that you will be obligated to the Fraternity as are all others who now wear the badge of membership.

## **THE SYMBOLS OF THETA TAU**

Theta Tau, like other fraternities, has certain forms, insignia, flowers, colors, publications, and songs which you should know. Study these various symbols in order that you may understand and recognize them.

### **PLEDGE FORM**

The Fraternity has a standard Pledge Form which each pledgeman



must complete in detail immediately upon the acceptance of his bid. This form will be filed in the national archives and care must be exercised in its proper execution. You should be certain that all information shown thereon is absolutely correct and legible. The "shingle" to which every newly initiated member is entitled, cannot be issued until this form and report of initiation have been filed with the Executive Secretary.

As soon as you are pledged you should have completed a Pledge Form. (If you have not, ask the Scribe or Regent of the chapter for a Pledge Form and fill it out immediately.)

#### INSIGNIA

There are certain definite articles of jewelry which publicly identify a pledge or member and are for the use of members and pledges only. Their form and proper use are carefully outlined by the Fraternity and no deviation is permitted. The four items of official jewelry are: the member's badge, sister pin, pledge pin, and official recognition button.



#### PLEDGE BUTTON

The pin or button of a pledge (center left) is a triangular gold shield with a dark red gear wheel in its field. It is for the exclusive use of pledgemen and must be worn as specified by the chapter. It is the property of the chapter and must be surrendered to the chapter should the pledge be broken or at the time of initiation.

#### OFFICIAL BADGE

The official badge of the Fraternity (lower right) is a gold gear wheel with crossed hammer and tongs and the letters Theta and Tau. In the center of the wheel is a dark red garnet, and the inner rim of the gear wheel is jeweled with pearls. The official badge may be worn by *members only*. It is the property of the member and will so remain unless the member should be suspended or expelled from the Fraternity, in which case it must be surrendered to

his chapter. The official badge is worn on the left side of the chest; never on a coat or jacket. It is compulsory for every initiate to have a badge and no man will be initiated who declines to purchase or wear it.

#### SISTER PIN

The sister pin (center right) is a gold gear wheel smaller in size than the official badge, and does not bear the crossed hammer and tongs. Its jewels are the same as the official badge and it too bears the letters Theta and Tau. It may be worn by female relatives or friends of the members. In no case is the official badge to be so used.

#### RECOGNITION BUTTONS

The official recognition button (upper left) is a replica of the pledge button but reduced in size. This may be worn by members only and then on the upper tip of the left coat lapel.

The Greek letter recognition button (center top) is used by many members for unofficial Theta Tau gatherings and as a symbol more commonly recognized by others as a sign of membership in Theta Tau.

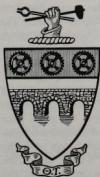
A coat of arms recognition button (top right) has also been issued, but its use has not been widespread in recent years.

#### ALUMNI CHARM

This charm (lower left) is for use by alumni on key chains, tie chains, or in other dignified form. It is not in common use today, but has been popular in the past.

The national Fraternity has designated an official jeweler, which firm is authorized to produce and sell official Theta Tau jewelry. Official jewelry must be ordered on standard forms through the Executive Secretary.

#### THE COAT OF ARMS



This insignia consists of three parts: a crest (hand grasping hammer and tongs), a shield, and a ribbon scroll. The insignia as a whole is called the coat of arms.

The following is a description of the colors in the coat of arms: the ribbon scroll below the shield is gold with "ΘΤ" in black; the sleeve on the arm is black; the torsade below the clasped hand has alternating dark red and gold strands; the bridge gray; the area behind the gears dark red; the gears and hammer and tongs black; the hand flesh colored; the rest gold.

It is permissible to reproduce the coat of arms on jewelry to be used by members only.

#### FLOWER

The flower of Theta Tau is the Jacqueminot (Jak' mi nō) or the dark red rose. It is capitalized because it comes from the name of a French general.

## JEWEL

The official jewel of Theta Tau is the dark red garnet (gär'net).

## COLORS

The official colors of the Fraternity are dark red and gold; it is proper to use these colors together on any article significant to the Fraternity.

## THE GEAR OF THETA TAU

*The Gear* is the national magazine of the Fraternity. The first number was published by Beta Chapter in 1907 under the name of *Hammer and Tongs*. In 1908 the name of the magazine was changed to *The Gear*. In 1918 it was published by Delta Chapter and in 1922 by Alpha. In 1926 Omicron Chapter published it, and alumni of Omicron edited it until 1961. A Zeta alumnus is now Editor. It is published twice annually in the spring and fall. In it are informal papers by distinguished alumni, chapter letters, alumni notes, biographical sketches, editorials, and any information of importance which may be issued by the Executive Council.

When you are initiated you will pay a modest sum into a life subscription fund which is held as a trust fund by the Grand Treasurer. The magazine will be sent to you without charge as long as you remain in good standing and your current address is on file with the Fraternity. During the time that you are an undergraduate your copy will be sent to you in care of your chapter. When you graduate or when you cease to be an active member, you should notify the Editor so that the magazine can be sent to your new address. Always keep the Editor informed of your change of address; otherwise you will not continue to receive *The Gear*.

## EXECUTIVE COUNCIL

The elected national officers of the Fraternity are members of the Executive Council. A complete list of current national officers is printed in *The Gear* and should be copied onto the page provided in this Manual.

## ALUMNI ASSOCIATIONS

Alumni Associations have been established in 11 cities. The oldest one is the Southwestern Alumni Association, founded in 1908 at Douglas, Arizona, but now situated in Tucson. Each issue of *The Gear* contains a complete list of the Associations and the addresses of the presidents and secretaries. As alumni you are obligated by your initiation promises to affiliate with the Alumni Association in your area. The Association will welcome you and the contact can be of great value to you.

It would be impossible to list in this Manual the hundreds of

distinguished alumni of our Fraternity. Among these are well known educators, prominent members of the engineering profession in industry and government, and members of the armed forces who have distinguished themselves. Honors and accomplishments achieved by our members are published in every issue of *The Gear*.

### FRATERNITIES COMPETITIVE TO THETA TAU

Theta Tau is the oldest *professional* engineering fraternity of its type. Others have followed and exist today on many campuses. To those organizations whose general patterns resemble Theta Tau's and who seek their members from the same general group of men, *we have declared ourselves competitive, and all members of Theta Tau are strictly prohibited from belonging to any one or more of them.* They are:

Alpha Chi Sigma	Sigma Phi Delta
Alpha Rho Chi	Sigma Rho
Kappa Eta Kappa	Triangle
Scarab	

General or engineering scholastic honor societies (often referred to erroneously as honorary fraternities) which are nationally recognized as such and are registered in *Baird's Manual of College Fraternities* are not considered competitive to Theta Tau. Examples are Tau Beta Pi, Sigma Tau, Blue Key, and Omicron Delta Kappa.

You may hold membership in an academic fraternity or honor society without violating your obligations to Theta Tau. Before joining any other organization (social or honorary) be certain it is not competitive with Theta Tau. You should also ascertain its national scope and character. Weigh carefully your decision to assume the responsibilities of membership. There is far more satisfaction in being an excellent member of one organization than in being a poor member of several.

### NATIONAL AND REGIONAL MEETINGS

Sovereignty is vested in the Biennial Convention, which includes voting representatives from all chapters and alumni associations as well as the national officers. The Convention elects the seven Executive Council members (who are alumni) for a term of two years. The Executive Council directs all operations between Conventions in accord with the Constitution and Ritual of Theta Tau. Each chapter is paid personal visits by national officers whenever possible.

During alternate years between Conventions, Regional Conferences (not conventions) are held to bring together men from chapters within a given geographical area. There are currently five regions, each with a Regional Director appointed by the Executive Council. Pledges may attend the Regional Conferences. These Conferences have no legislative power.

## PROFESSIONAL INTERFRATERNITY CONFERENCE



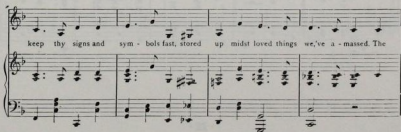
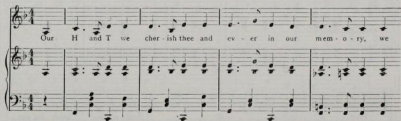
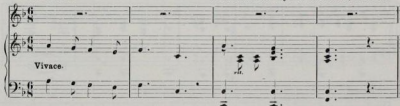
Theta Tau is a member of the PIC. It is comparable in organization and operation to the National Interfraternity Conference of the social fraternities. The PIC is based on the common interests and problems of the various professions, and it meets periodically to discuss these. It has representatives from architecture, chemistry, commerce and business administration, dentistry, education, engineering, law, medicine, music, pharmacy, and veterinary medicine.

## MUSIC OF THE FRATERNITY

### THETA TAU.

Introduction.

Words and music by D. C. Blackmar, Beta '12.



Ham-mer and the Tongs and Gear, these em-blems we held dear

And our good fra-ter-nal law we live and The-ta - Tau.....

**Chorus.**

Come all The-ta Tau men Drink the

Tempo di Valse.

Toast a gain..... Here's to our broth-ers still

Theta Tau. 3-2.



young in years..... Here's to our alum - ni, our real en - gi-

neers..... Ev - ery one be mer - - - ity

What if the world seems wrong..... we'll each help the

oth - er, we're each some ones broth - er In good old Ham-mer and Tong.

Thema Tau 2-3.

## NATIONAL OFFICERS

Below are spaces for you to list the current elected and appointed national officers, along with their chapters and years.

ELECTED OFFICERS	Chapter	Year
------------------	---------	------

Grand Regent	_____	_____
--------------	-------	-------

Grand Vice Regent	_____	_____
-------------------	-------	-------

Grand Scribe	_____	_____
--------------	-------	-------

Grand Treasurer	_____	_____
-----------------	-------	-------

Grand Marshal	_____	_____
---------------	-------	-------

Grand Inner Guard	_____	_____
-------------------	-------	-------

Grand Outer Guard	_____	_____
-------------------	-------	-------

## SPECIAL OFFICERS

Executive Secretary	_____	_____
---------------------	-------	-------

Delegate-at-Large	_____	_____
-------------------	-------	-------

## APPOINTED OFFICERS AND EDITORS

Board of Editors:

Editor-in-Chief	_____	_____
-----------------	-------	-------

_____	_____	_____
-------	-------	-------

_____	_____	_____
-------	-------	-------

_____	_____	_____
-------	-------	-------

Regional Directors:

Northern	_____	_____
----------	-------	-------

Southern	_____	_____
----------	-------	-------

Eastern	_____	_____
---------	-------	-------

Western	_____	_____
---------	-------	-------

Central	_____	_____
---------	-------	-------

Archivist	_____	_____
-----------	-------	-------

Historian	_____	_____
-----------	-------	-------

## YOUR CHAPTER'S HERITAGE

Below is space for a brief history of your chapter and other information you should know about it.

\_\_\_\_\_ Chapter

Original name (if any) \_\_\_\_\_

Date Established \_\_\_\_\_ at \_\_\_\_\_ (school)

Address \_\_\_\_\_

City \_\_\_\_\_ State \_\_\_\_\_ Telephone No. \_\_\_\_\_

Chapter Adviser \_\_\_\_\_

Charter Members. Indicate those deceased by an \*.

1. \_\_\_\_\_
2. \_\_\_\_\_
3. \_\_\_\_\_
4. \_\_\_\_\_
5. \_\_\_\_\_
6. \_\_\_\_\_
7. \_\_\_\_\_
8. \_\_\_\_\_
9. \_\_\_\_\_
10. \_\_\_\_\_
11. \_\_\_\_\_
12. \_\_\_\_\_
13. \_\_\_\_\_
14. \_\_\_\_\_
15. \_\_\_\_\_

Past Grand Regents from the chapter \_\_\_\_\_

Brief History:

## ACTIVE AND FACULTY MEMBERS

Active Members:

<i>Name</i>	<i>Major</i>		<i>Name</i>	<i>Major</i>
-------------	--------------	--	-------------	--------------



Theta Tau Faculty Members on Campus:

<i>Name</i>	<i>Title</i>	<i>Department</i>	<i>Chapter</i>	<i>Year</i>
-------------	--------------	-------------------	----------------	-------------

## YOU AND YOUR FELLOW PLEDGES

Record below pertinent information about yourself and your fellow pledges.

Name \_\_\_\_\_ Date of Pledging \_\_\_\_\_

Date Initiated \_\_\_\_\_ Pledge Office Held \_\_\_\_\_

Meeting Time for Pledge Class \_\_\_\_\_ (Day) \_\_\_\_\_ (Time)

Other Data (Pledge projects, honors, grade averages, pledge sponsor, etc.)

*Pledge Class Members*

*Office*

*Major*

