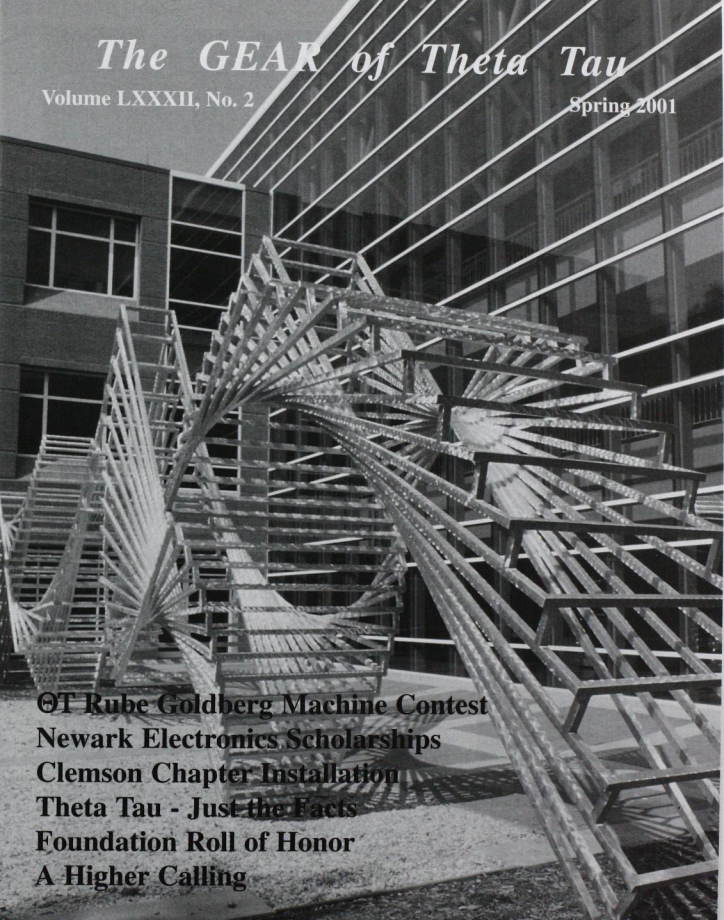


The GEAR of Theta Tau

Volume LXXXII, No. 2

Spring 2001



**OT Rube Goldberg Machine Contest
Newark Electronics Scholarships
Clemson Chapter Installation
Theta Tau - Just the Facts
Foundation Roll of Honor
A Higher Calling**

OFFICE RELOCATION

The Theta Tau Central Office is relocating to Austin, Texas, this fall. Please be alert to notice of our change of address once the move is underway.

NEWS OF EXECUTIVE COUNCIL MEMBERS

Janice L. Wiitala, Omicron '90, Grand Scribe, was accepted to participate in the Habitat for Humanity International's Jimmy Carter Work Project 2001 this summer. With her brother John of Houston, Texas, she is among 500 participants from the United States who are part of a program to build 120 houses near Seoul, South Korea.

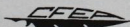
Mark R. Janssen, Omega '88, Grand Treasurer, with Target Corporation since 1995, has been appointed to represent Engineering as a Business Analyst coordinating Technology and Process Engineering needs for his Department and developing long- and short-term technology plans and business analysis.

Michael T. Abraham, Epsilon Beta '92, Executive Director, now President-Elect of the Professional Fraternity Association, will advance to the position of President of that organization at its annual meeting in September. He has served on the PFA Board of Directors since 1999. Theta Tau was a founding member of the Professional Interfraternity Conference (the PFA's predecessor organization) in 1924.

VOLUNTEERS SOUGHT

The national Fraternity is seeking members interested in being of service as committee volunteers. The positions require communication with other committee members via email or other means. Those volunteering for such committee posts would report to the Executive Council, but **travel would not be required**. Help in several other areas is needed as well and every effort will be made to **match your interest and expertise** with the Fraternity's needs. Contact the Central Office (central@thetatau.org) if interested or available.

Awards	Education	Bylaws & Ritual
Convention	Recruitment	(Others you
Curricula	Technology	may suggest)



CONTENTS

Features	Page
Clemson Chapter Installation	1
A Higher Calling	2
Newark Scholarship Winners	9
Regional Directors Appointed	10
Theta Tau Rube Goldberg	12
Theta Tau - Just the Facts	back cover

Departments

Foundation Roll of Honor	4
In Memoriam	13

Cover: *The Six Degrees of Freedom* by Florida sculptor Linda Howard outside the Fluor-Daniel Engineering Building on the Clemson University campus. Photo courtesy of Clemson University.

EXECUTIVE COUNCIL

Grand Regent	Glen A. Wilcox
Grand Vice-Regent	Justin G. Wiseman
Grand Scribe	Janice L. Wiitala
Grand Treasurer	Mark R. Janssen
Grand Marshal	Michael D. Livingston
Grand Inner Guard	Marco A. Bianchini
Grand Outer Guard	Christopher A. Stockman
Student Member	Andrew D. Cline
Delegate-at-Large	Lee C. Haas
Executive Director	Michael T. Abraham

BOARD OF EDITORS

The Gear of Theta Tau

Robert E. Pope, Editor-in-Chief
Michael T. Abraham

CENTRAL OFFICE

Theta Tau 800/264-1904
PO Box 410677 Central@ThetaTau.org
St. Louis, MO 63141 <http://www.ThetaTau.org>

The Gear of Theta Tau is the official publication of Theta Tau Professional Engineering Fraternity and is published in the fall and spring. The magazine is an educational journal devoted to matters of fraternity interest and is sent at no cost to members whose addresses are on record. Send change of address to Theta Tau Central Office, 655 Craig Road, Suite 128, St. Louis, MO 63141-7168. Special third class postage has been paid at Jefferson City, MO.

CLEMSON CHAPTER INSTALLATION



MEMBERS OF LAMBDA GAMMA CHAPTER POSE IN FRONT OF THE ALUMINUM SCULPTURE
THE SIX DEGREES OF FREEDOM OUTSIDE THE FLUOR-DANIEL BUILDING ON THE CLEMSON CAMPUS

The Clemson University Colony of Theta Tau was installed as Lambda Gamma Chapter of Theta Tau on January 13, 2001. Members spanning five decades and twelve chapters were represented at the events of the day where nineteen charter members were initiated.



GRAND REGENT GLEN A. WILCOX,
OMEGA '90, ADDRESSES THE BANQUET
GUESTS

As Grand Regent, Brother Lee C. Haas met with interested Clemson University engineering students on February 25, 1999, to present the ideals of Theta Tau and organize the local engineering fraternity. The fraternity over time became involved in various activities in and around Clemson including the Anderson-Oconee-Pickens Math and Science Hub for public school students, the

South Carolina Adopt-A-Highway program, and Campus Sweep to help keep the Clemson University campus beautiful. Members of the Colony attended the 1999 Leadership Academy where they learned skills to motivate their colony members to achieve successes they now enjoy. The professional development schedule has been full as well, including seminars, lectures, plant tours, and joint efforts with the National Society of Professional Engineers. More social activities have included participation in intramural sports, tailgates at home football games, and interaction with Rho Chapter at North Carolina State University.

The August 2001 Princeton Review of TIME named Clemson its four-year, public "College of the Year." Only four institutions shared such a designation by the magazine with the other three being named in the liberal arts, two-year, and private school categories. The designation was made based on Clemson's "communication-across-the-curriculum" (CAC) movement to integrate written, oral, visual, and electronic communication in all disciplines. The CAC movement is being shared by Clemson with other institutions and is helping faculty to teach and students

to learn more effectively. The university has taught engineering disciplines for over 100 years due to the inspiration of Thomas Green Clemson. Clemson bequeathed his 1,400-acre estate for establishment of the university. The estate had been the Ft. Hill plantation of his father-in-law and statesman John C. Calhoun. From the humble beginning of twenty-seven mechanical electrical engineering degrees granted in 1896, Clemson's College of Engineering & Science now has approximately 4,000 undergraduate and graduate students.

We welcome our new brothers as Theta Tau establishes its first chapter in beautiful South Carolina.



CHRISTOPHER MUKLEWICZ, EB' 05,
GRAND TREASURER JANSSEN, Ω '88,
TONI MARTINOVSKI, EB '01, AND
PAUL ORTIZ, EB '57 SHARE A
MOMENT AT THE BANQUET HONORING
THE AΓ CHARTER MEMBERS

A HIGHER CALLING

Most Theta Tau initiates plan to pursue engineering as a professional career. Some indicate on their pledge forms an ambition to use engineering as a foundation on which to build a career in another profession like medicine or law. Sometimes immediately after college, or later after practicing engineering for a while, it is not surprising that some of our brothers switch to other fields. Education on a college level, or management are fields to which a number of graduate engineers gravitate. Others succeed in fields that might not be expected. From information collected for the Membership Directory, we were surprised by the number of members indicating they had been called to the ministry. Several of these have shared their stories with us. Articles on Brothers in other fields may appear in subsequent *GE* issues.

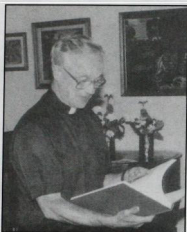


FR. CAVANAGH

Best known in the Fraternity is probably the Rev. **Dr. Gerald F. Cavanagh, S.J., Delta '53**, inducted into the Theta Tau Alumni Hall of Fame in 1999.

Building on his engineering degree from Case Institute (now Case Western Reserve), Father Cavanagh forged a professional career combining theology, higher education, and business management. Joining the faculty there in 1980, he served as Academic Vice President and Provost of the University of Detroit Mercy, 1989-1995. See Fall 1999 *Gear*.

Always fascinated by aviation and flying, **Kenneth Granquist**, Alpha '45, entered the University of Minnesota as a Navy V-12 student in aero engineering. Even with classes on a year-round accelerated program, he became a member of Theta Tau, along with other classmates. He then attended the Naval Reserve Midshipman School at Notre Dame and served as an aircraft maintenance officer at the naval air station in



REV. KENNETH GRANQUIST

Corpus Christi, Texas. After World War II, he worked in the industrial engineering department of the American Steel and Wire Company in Duluth, enjoying the work even though it was not aircraft design which he had envisioned while in school. He began to think of the Gospel ministry, and in 1949 took a leap of faith and enrolled in seminary. It was not an easy switch since he was older and because theology and philosophy did not match the courses to which he had been exposed at Minnesota.

Ordained in 1952 into the Lutheran ministry, his first call was as pastor of a mission congregation in East Hartford, Connecticut, the home of the aircraft engine producer, Pratt-Whitney. Since then, the Rev. Dr. Granquist has served parishes, large and small, suburban and inner-city, in Michigan, Illinois, and Minnesota for more than 45 years, and for some years as assistant to a Bishop in Chicago. After retirement, he was pastor to senior citizens in a large congregation in St. Paul but is now fully retired.

Brother Granquist comments: "These years have been filled with a rich variety of experiences and relationships with thousands of people under all kinds of circumstances, preaching, teaching, counseling, planning, and paying for new church buildings, serving on various boards and

commissions in the church and community. I look back on my ministerial career with a great deal of satisfaction. But I also reflect with satisfaction and gratitude upon my engineering education and work experience...I have never been sorry I took that turn in the road and became a minister. And I've never been sorry that I started off as an engineer. It is a great combination!"

Having just completed technical school when WWII broke out in Europe, **Harry L. Gogan, Mu '48**, went to work for Curtiss-Wright Corporation which was building P-36 and P-40 aircraft for France, England, and China. He also took extension engineering courses from Cornell. After the U.S. entered the war, he enrolled in aeronautical engineering at the University of Alabama, but this was interrupted when he was accepted for flight training by the Army Air Corps. Flying P-47 fighters in Europe, he was downed after his 49th mission, and spent the rest of the war in a German POW camp. After the war, he completed his studies at Alabama and then worked at Langley Laboratories of NASA. In 1951, he moved to New Mexico to conduct flight tests on nuclear weapons on Air Force aircraft, spending the next 5 years with the Air Force Special Weapons Center, and being involved with weapon developments for the Vietnam War.

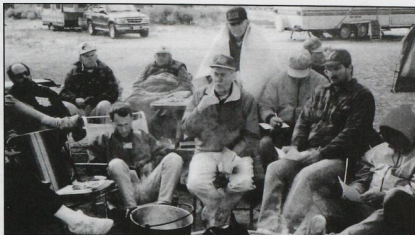


DEACON HARRY
GOGAN

In 1976, he was appointed Technical Director of the Office of Aerospace Studies for Air Force Systems Command. Retiring from his work as an Air Force civilian in 1980, he worked four years as a Principal Engineer for BDM Corp.

Active in the Catholic Church all his life, he realized that his faith had helped him through various crises. Long interested in studying for the Diaconate, he entered that program in 1983. He was ordained a deacon for the Archdiocese of Santa Fe in 1987 and has enjoyed a very satisfying career for the past 14 years in Our Lady of Annunciation Parish where he continues to preside at baptisms, weddings, communion services, and interments. He visits the sick and assists in liturgical services.

An interest in flying consumed the early professional life of **Bill Stinson**, Zeta '52. He uses his experiences, from growing up believing in nothing spiritual, serving as a WWII navy fighter pilot, aeronautical



DR. RON BUTLER (CENTER) SERVING ADULTS ON RETREAT

The transition to full-time ministry came gradually. He was ordained in 1980, but doesn't use the title. He says most think of ministry as exemplified by one who stands in the pulpit and preaches, but he points out that this is not what God has him doing. Rather, through the Believers' Bible Study, held not in a church but in a public setting like a restaurant, he reaches out to businessmen and women, the engineers, doctors, scientists, lawyers, and other professionals often turned off by religion, just as he was. Through prayer, he has helped businessmen recover from financial ruin. He has seen the power of God demonstrated in his healing ministry as he and others have

many of God's power in action today is soon to be published in the book *From Test Pilot to Fisherman*.

He now distinguishes between *facts* and *truth*. The former is what engineers use; but the truth of God's Word, he points out, is a higher authority and can actually change the facts. The message he received from God 28 years ago is imprinted on his business card: "GOD LOVES YOU, NO MATTER WHO YOU ARE, NO MATTER WHAT YOU'VE DONE, GOD LOVES YOU."

After graduating with a BSEE from Iowa, **Ron Butler**, Omicron '57, spent 15½ years as a research engineer at Lockheed Aircraft in Burbank, California. During his years at Lockheed, he and his wife Carole adopted seven children and became very involved with young people through their church in Van Nuys, California. With an offer to work full time with young people in a Christian environment, he left Lockheed to become a Youth Pastor in a local church. He received an MA in Christian Education from Talbot Seminary and a doctorate in Education from BIOLA University.

For the past 29 years, Dr. Butler has served as a Youth Pastor, Assistant, Associate, and Executive Pastor. At his Canyon Lake Community Church in Canyon Lake, California, he works with adults in education. Brother Butler has written:

CALLING, CONTINUED ON PAGE 11



BILL STINSON CELEBRATES AT THE 20TH ANNIVERSARY OF THE FGBMFI CHAPTER HE FOUNDED

engineer, experimental test pilot, multi-engine sales manager, and officer and director of major aircraft manufacturers, to relate a compelling testimony of the ways in which God has intervened repeatedly in his life (even before he became a Born-Again Christian), and is working in persons' lives today. After years of admittedly dissolute living, he gave his life to the Lord in 1973, but continued flying and selling airplanes.

been healed, "incurable diseases" cured, and even life itself restored to ones clinically dead.

Brother Stinson is founder and president of The Fisherman Foundation, a non-profit corporation now in its 22nd year, and founder and president of the San Diego-South Bay Chapter of the Full Gospel Business Men's Fellowship International (FGBMFI). His work has included street and prison ministries. His testi-

ROLL OF HONOR

Our deepest thanks to all those listed here who have contributed to the Theta Tau Educational Foundation from January 2000 to the present. Your contributions have made possible our Foundation's Scholarship Winners (see Fall 2000 *Gear* issue) and the 2001 Leadership Academy that will be reported upon in the next *Gear* issue. Our student members, chapters, national Fraternity, and Foundation appreciate your generosity!

ALPHA

(Minnesota)

Charles W. Britzius, '33
Wesley H. Johnson, '34
Rudolph Kojala, '36
John P. Swenson, '37
Maxwell H. Madsen, '42
Robert W. Rosene, '45
James K. Frakes, Jr., '46
Herm Seibert, '48
Elwood F. Rafn, '49
Robert V. Hansen, '50
Keith D. Graham, '51
John H. Stolpestad, '51
Blaine F. Himmelman, '52
Donald Van Prooien, '52
Walter H. Nebel, '59
Rodger E. Zierner, '60
James T. Peterson, '63
Derrill B. Pratt, III, '63
Gerald J. Dittberner, '64
Carl F. Darling, '66
Gary M. Kaner, '66
Knute S. Knudson, '66
Jeffrey W. Schmitt, '68
Robert E. Engberg, '69
Donald B. Gabrielson, '81
Stephen Kelly, '82
Craig J. Drake, '83
Ronald P. Gredvig, '84
Kenneth P. Huberty, '84

BETA

(Michigan Tech)

Russell C. Anderberg, '34
James S. Westwater, '34
John W. Lendved, '36
Norman R. Siewert, '36
John P. Manger, '38
Richard Dexter Schoch, '48
James W. Garrett, '49
Burd Hikes, '49
Roger T. Penman, '49
Norman G. Ainslie, '50
Dean R. Kelly, '50
Joseph M. Post, '50
Richard C. Witte, '50
La Verne Lemke, '51
William L. Adams, '54
William A. Mossner, '56
George J. Sperry, '56
John A. Stamm, '61
Carlo J. Cattarello, '62

Thomas Delegeorge, '62
Ernest A. Lauria, '62
Richard A. Greketis, '63
Fred Sherriff, '64
James A. Mitchell, '65
David W. Stallard, '65
Charles G. Kellogg, '66
David M. Kimball, '67
Michael T. Sutkowski, '70
Neil C. Hikade, '71
Frederick H. Hillard, Jr., '72
Bruce R. Bartter, '79

GAMMA

(Colorado Mines)

John M. Pardee, '35
George H. Ripley, '36
Charles M. Tarr, '38
Robert F. Bowie, '42
Wallace Chapla, '42
George A. Kiersch, '42
Alfred T. Ireson, '48
Henry G. McCleary, '48
George Y. King, '51
William N. Lyster, '53
John M. Anderson, '54
Patrick Thomas, '55
Robert B. Steck, '57
John T. Chandler, '59
Richard B. Egen, '60

DELTA

(Case Western)

John H. Baird, '32
Lewis B. Moore, '33
John R. Parker, '36
Gordon F. Markley, '38
Walter F. Mills, '42
Richard E. Panek, '42
John W. Lewis, '43
C. Allan Schurr, '43
Neil T. Sawdey, Jr., '44
Stephen S. Werkman, '44
Howard A. Shelley, Jr., '45
Lee D. Miller, '46
Harry E. Figgie, Jr., '48
George A. Fort, '48
Bruce F. Greek, '49
Jack E. Maxwell, '49
Willard R. Frissell, '50
George P. Millburn, '50
Thomas R. Schuerger, '50
Donald E. Tanger, '50

Donald A. Zalimeni, Sr., '51
Elmer A. Kitinaja, '53
Raymond W. Marshall, '53
Charles E. Sax, '54
Stephen J. Toth, '54
Ronald R. Bogolin, '56
Stephen Mihaly, '56
Edward S. Monarchi, '56
Thomas A. Blanchard, '57
David A. Giltinan, '59
Lee J. Penkowski, '59
Jonathan A. Gerbracht, '62
Louis Cohen, '66
Ernest F. Jageler, Jr., '66
Martin L. Nuetzel, '69
James A. Salter, '69
William H. Campbell, '70
Edward J. Tatman, '71
Paul E. Plank, '72
James F. Soeder, '72
Michael H. Babiak, '74
Marc P. Kelemen, '81
Marcus P. Bak, '84

EPSILON

(California)

Harry L. Thomsen, '32
George O. Scarfe, Jr., '34
Richard C. Mielenz, '36
Kenneth E. Hill, '38
Robert K. Byerts, '39
Charles F. Hunkins, '39
Manuel G. Bonilla, '43
William F. Cox, Sr., '43
Lee A. Tune, Jr., '43
Myron R. Elliott, '50
Richard E. DeLapp, '51
Neal K. Matsunaga, '70

ZETA

(Kansas)

E. M. Bruzelius, '34
Dana Pratt, '34
William R. Carter, '35
Howard E. Miller, '35
James O. Maloney, '36
Lester A. Haug, '39
John P. Ritchie, '39
Harvey S. Steele, '39
Clifford L. Willis, '39
Charles E. O'Bryon, '41
David W. Oberlin, '41
Howard Palmer, '41

Ralph P. Carpenter, '42
Francis J. Domingo, '42
Charles D. Shrake, '46
Robert W. Elliott, '49
J. B. Ladd, '49
Robert D. Talty, '49
Glenn Anschutz, '50
Charles H. Walker, '50
Robert E. Pope, '52
Marion W. Scholes, '52
Keith C. Smith, '52
Robert A. Sutton, '53
George W. Holyfield, '54
James R. Hall, '55
Ivan L. Henman, '56
Benny A. Anderson, '57
William E. Franklin, '57
William E. Benso, '58
Kerin L. Dryden, '58
Richard G. Hinderliter, '58
Thomas W. Domville, '59
George G. Dodd, '60
Jon M. Edmonds, '62
T. Michael Garrison, '62
Robert R. Rosander, '67
Arnold Bard, '68
Gary A. Pratt, '68
William E. Ege, '70
Paul T. Hetherington, '70
L. Dean McCulley, '70
Andrew D. Russell, '70
Richard M. Kovich, '72
Walter J. Wrobel, '77
Kent Pennybaker, '83
Sally W. Sawyer, '83
Susan Allen Slattery, '84
John W. Pope, '88
Lynn A. Thomea, '89
Loren R. Kallenbach, '92
Michael A. Stutz, '94

THETA

(Columbia)

John W. Balet, '25
Roscoe Guernsey, '38
John F. McDermott, '40
William Vermeulen, '40
George W. Michalec, '43
Harry W. Fritts, '45
Robert J. Buegler, '46
Warren Saunders, '48
Charles Beck, Jr., '50
Charles Boudakian, '50

Rudolph J. Thoden, '54
John B. Campbell, '55
Henry R. Janiesch, '57
Ronald V. Repetti, '57
Robert Glaser, '67
Stephen P. Gilbert, '68
David T. Chew, '71
William D. Hooper, '71
Alfonso Lau, '71

IOTA

(Missouri at Rolla)
Donnell Dutton, '35
George W. Dickinson, '37
John W. Frame, '37
Albert L. Tetley, '39
Armin F. Fick, '41
Alden G. Hacker, '41
William D. Busch, '42
Harold W. Haas, '42
Matthew J. Kerper, '43
James A. Neustaedter, '43
Alan P. Ploesser, '44
Robert F. Schmidt, '45
Harold G. Butzer, '47
Ralph J. Feldhaus, '47
Jack D. Foster, '49
Harold M. Telthorst, '49
William W. Collins, '50
John E. Evans, '52
John E. Mulholland, Jr., '52
Robert D. Jenkins, '53
Daniel E. Groteke, '54
Sam Smart, '55
Dale E. Chapman, '56
David L. Harbaugh, '57
Lloyd E. Reuss, '57
Kenneth I. Pendleton, '60
Anthony B. Hoelker, III, '68
James F. Watkins, Jr., '69

KAPPA

(Illinois)
George L. Johnson, '31
Frederick W. Mast, '33

LAMBDA

(Utah)
Floyd D. Gowan, '29
Albert M. Olson, '33
Simon Ramo, '33
Justin S. Blickensderfer, '40
G. Walter Dansie, Jr., '40
Robert D. Hayes, '42
Fred J. Donkin, Jr., '43
Earl J. Hicks, '43
Jack N. Birk, '47
Richard H. Smith, '47
John A. Edward, '48
James H. Polve, '48
Arthur S. Horsley, '55
C. Edwin Alter, '61
J. Delvin Armstrong, '63
Michael J. Kirkman, '65

MU

(Alabama)

Jack W. MacKay, '35
Kenneth R. Daniel, '36
John Hiram Light, '38
W. Frank Cobb, Jr., '39
Dunklin H. McCondicchie, '40
Robert E. Morris, '40
Patrick H. Sandlin, Jr., '40
Col. Jesse R. Cheatham, '41
John C. Hamill, '42
William D. Jordan, '42
James W. Elliott, '43
Harold R. Kibby, '43
J. Leith Potter, '44
Farris A. Deep, '45
Murry Maisel, '46
Vincent Lauria, '47
Charles A. Sipe, '47
Louis R. Hovater, '48
John W. Bray, '49
Robert H. Pogue, Jr., '49
Freddie L. Williams, '49
Remo John Carbone, '50
Leopold J. Cantafio, '52
Mack O. Matthews, '52
Robert A. Moore, '54
Leonard H. Sedlin, '55
James O. Horsley, '58
Joseph L. Massett, '58
Thomas Gachet, '60
C. A. Blackwell, '61
William E. Roberts, '63
F. William Keith, Jr., '64
John E. Daniel, Esq., '65
Robert E. Moyer, '65
Charles M. Rampack, '65
Dennis C. Foster, '71
Roy R. Browder, Jr., '72
Patrick D. Frederick, '72
Michael F. Beard, '73
Ronald R. Campbell, '73
James O. Harrell, '74
K. Clark Midkiff, '74
Charles N. Sherer, '76
Steve L. Ruzic, '82
Jeffrey W. Barker, '84
D. Allen Welch, '96
Brandon J. Satterwhite, '98
Amanda Olszewski Welch, '99

NU

(Carnegie-Mellon)

Earl L. Warrick, '33
Harry F. Zinsser, '33
Valentine D. Luedeke, '34
Richard C. Lightcap, '36
J. F. Rabardy Floyd, '37
Robert M. Wolff, '41
Donald A. Moore, '42
Benjamin G. Marcini, '43
Cloyd R. Mellott, '47
Harold G. Hall, '48

Vernon H. Neubert, '48
George O. N. Reed, '48

XI

(Wisconsin-Madison)
Theodore C. Rynda, '49
R. O. Schindelholz, '49
Bill Hambley, '50
Richard J. Slifka, '51
George P. Zimmerman, '51
Julius F. Hokenson, '55
Curtis A. Barton, '64
Dennis R. Roseth, '65
Donald M. Marske, '66
David M. Schueffner, '66
John A. Niemeyer, '67
Won Yoon, '69
James L. Neureuther, '72
Fred Beranek, '73
Paul A. Vandermus, '73
Mark W. Werner, '75
Jack W. Hobbick, '77
Donald H. Slavik, Esq., '78
Jennifer M. Lautz, '90
Neil T. Burgard, '98
Jennifer L. O'Meara, '99

OMICRON

(Iowa)

Arthur E. Stanley, '31
Elwin Lohse, '33
William P. Jones, '34
F. D. Cooke, '36
Robert L. Miller, '41
James R. Lightner, '44
Leland M. Hausler, '47
E. C. Sincox, '48
Norman A. Hunstad, '49
Charles W. Lazenby, '50
Philip A. Temple, '50
Robert P. Van Dyke, '50
Richard A. Paramore, '51
Vern E. Halverson, '52
L. Earl Tabler, '52
Gorman G. Tutsch, '52
Wayne G. Zellmer, '52
Harold P. Wendler, '53
Perry A. Lorentzen, '54
William L. Liike, '55
William C. Ditch, '56
Charles H. Blunt, '59
Hubert E. Storer, '59
Stanley F. Schroeder, '64
Joseph R. McSwiggan, '66
Carl B. Robertson, '66
Robert L. Goodsmann, II, '67
Arthur B. de Wit, '67
M. Kent Anderson, '69
Joseph N. Meade, '69
Duane P. Vavroch, '70
James W. Harris, '75
Walker B. Kelly, '75
Steve F. Kessler, '80

Jeffrey T. Tuller, '85
Marie Mize Dotseth, '87
Thomas G. Didelot, '89
Laura Cheung, '90
Kent D. Carlson, '91
Katherine A. Golden, '91
Michael A. Smith, '91
Sheila S. Stevens, '91
Rodney E. Bristol, '92
Steven L. Augustine, '95
Sara K. Cooper, '97
Jamie J. March, '99
Kimberly S. Patters, '99

PI

(Virginia)

James S. Carson, '34
John B. McLaughy, Jr., '37
James V. Bitner, '41
Carl W. Peters, '41
W. Paul Cowgill, '42
Carlton H. Lowe, '42
Thomas W. Markwood, '47
Grason T. Nickell, '47
Edward T. Fogg, '49
W. Preston Stuart, Jr., '49
Robert M. Detamore, '50
Alfred K. Plitt, '52
Robert D. Powell, Jr., '52
Randolph S. Nunnally, '53
S. F. Lanford, Jr., '55
R. M. Millar, P.E., '58
Robert M. Kelly, '65
James H. Aylor, '68
Richard C. Crowe, '74
William T. Davidson, '74
Mary Anne Kerr, '87
Susan S. Bowen, '92
Johanna A. Kornberger, '93

RHO

(North Carolina State)

Thomas H. Blount, '40
R. Clark Andrews, '41
Everett R. Proud, '41
William S. Johnson, Jr., '42
Lionie C. Williams, Jr., '42
Douglas A. Craven, '43
G. Perry Greene, '44
James B. Lambeth, '44
James E. Deas, Jr., '46
Richard M. Jones, '47
Merlin A. Meares, '47
Harold F. McKnight, '50
Virgil Graham Mims, Jr., '50
Guy E. Knowles, Jr., '51
Marcus B. Crotts, '53
Philip J. Baugh, '54
Joseph T. Pearson, Jr., '56
William I. Bigger, Jr., '57
Charles D. Averette, '60
Truman L. King, '61
Lee C. Haas, '62

DID YOU KNOW?

The United Way in many communities now provides for "Donor Directed Gifts" so that you may designate the charity to which your gift is sent even if it is not usually a recipient of United Way support. This change was made by many local United Way chapters to enhance their reputation following abuse of financial resources and negative publicity primarily at the United Way national level.

When your boss is "strong-arming" you for a United Way gift, please remember the Theta Tau Educational Foundation, tax-exempt #43-1774314. Thank you.

John R. Buchanan, '64
Barry N. Frazelle, '64
David E. Gurley, Jr., '65
Ron Withrow, '67
Charles E. Fulton, '68
Larry D. Disher, '71
Michael L. Dalton, '72
Robert D. James, Jr., '72
James Kessler, '72
Mark A. Thompson, '73
L. Vaughn Wagoner, '73
Alan G. Williams, '73
Stanley A. Wilkins, Jr., '76
Michael W. Everett, '77
R. Bruce Snider, '77
Mark T. Conrad, '79
Paul R. Dengler, '81
James T. Kelliher, '87
Eric P. Heidepriem, '88
Ronald S. Nobles, '91
Daniel A. Dorn, '92
Randall T. Krum, '92
W. Scott Taylor, '93
Andrew D. Hayden, '96

SIGMA

(Ohio State)

Lester A. Knappe, '34
Werner W. Vollrath, '38
Carl D. Fischer, '39
Robert H. Denham, '40
I. William Spraitzer, '41
Harold E. Kohler, '42
James J. Whitsett, '42
Paul H. Bowen, '46
John P. Koss, '49
Richard C. Behymer, '51
Glenn G. McCoy, '51

Richard M. Deminski, '52
Edward P. Priebe, '53
William C. Anderson, '54
Kent R. Shellenne, '54
Robert G. Mayers, '56
Don C. Barnett, '57
Edward I. Stamm, '58
Charles W. Caudy, '62
Sidney R. Nemzer, '62
Scott C. Gordon, '63
Robert W. Schultz, '63
C. Reed Anderson, Jr., '65
Douglas D. Fockler, '65
John Wm. Bradshaw, '67
Lavern N. Meyer, '73
Brian D. Farnsworth, '80
Jay J. Pierce, '87
Edward J. Vinarcik, '93
Ronald S. Kundla, Jr., '94

TAU

(Syracuse)

Waldo C. Page, '34
Harold E. Crampton, '35
Charles W. Floring, '37
Donald A. Brush, '39
Lee C. Castle, '39
G. Clinton Getty, '39
Albert Travostino, '39
Jack W. Cottrell, '41
Robert J. King, '41
Drew Morris, '41
Ellis H. Brown, '42
Thomas Melville, '42
I. A. Hotze, '43
Harold T. Culver, '45
Bruno P. Morabito, '45
Addison B. Kline, '46
Laurence A. Alexander, '48
Martin J. Joel, Jr., '48
Attilio A. Mascone, '48
Jay E. Endres, '49
Arthur J. Hatch, Jr., '50
Stanley S. Selwach, '50
Emanuel V. Tomassini, '50
William F. Hoyt, '51
Karl Solomon, '51
John J. Doyle, '54
Alfred N. Ianuzzi, Jr., '54
Julian Kopka, '57
Dan Miller, '65
James J. Rustik, '65
Dennis Hrabchak, '66
George E. Fox, '67
Col. Fredrick Boecher, '68
Robert R. Kaiser, '70
Charles D. Whelan, '73
David J. Abrahamian, '76
Edward W. Whelan, Jr., '78
Eugene E. Leonardo, '82
Nathanael W. Berry, '85

UPSILON

(Arkansas)

E. Walter Dixon, '30
Charles R. Black, Jr., '35
Delbert A. Schmand, '37
Norbert J. Oswald, '41
Edgar A. Pittman, '41
Paul A. Kormondy, '45
LTC Robert L. Hester, Jr., '47
Harold K. Brewer, '48
Harry T. Lyle, '48
Edward L. Gammill, '50
Billy A. Robbins, '51
George R. Tait, '52
T. L. Beeler, '53
Edward M. Harvey, '54
J. C. Barr, '55
Charles W. Smith, '55
Henry L. Bauni, Jr., '56
William L. Cravens, '56
Jerry C. Perciful, '60
V. Snowden Armstrong, '62
Philip A. Selig, '62
John J. Harton, '64
Charles F. Mayfield, Jr., '64
Louis E. Hegeman, '65
Jim Womble, '66
Gus M. Vratsinas, '67
G. Kent Burnett, '68
C. Wayne Chaffin, '68
L. Michael Hardgrave, '68
Richard B. Wright, '69
John R. Bass, '70
Richard L. Hall, '70
David L. Ballenger, '71
Robert P. Cummins, '74
Charles E. Martin, '74
James L. Garner, '75
Andy Wood, '76
Donald C. Michener, '77
Chris G. Freyaldenhoven, '79
John P. Higgins, '80
William R. Irwin, Jr., '82
J. Robert Dean, Jr., '83
Gregory M. Garner, '88
Aaron C. Emerson, '90
Mark E. Reitter, '90
Craig F. Hall, '91
Kenneth D. Gaines, Jr., '92

PHI

(Purdue)

Winfield S. Heath, '31
Clare F. Burns, '32
Lloyd L. Connell, '32
Wayne K. Milne, '38
Edward C. Thoma, '48
Donald W. Chrisman, '42
M. William Georges, '48
Keith W. Benn, '49
Richard A. Stresser, '49
James T. Corle, '55
Frank R. Dye, '55

William M. Kocsis, Jr., '55
Robert A. Blohm, '56
Norman W. Jetta, '56
James E. Park, '57
Peter A. Lynch, '63
John W. Lubker, II, '68
Charles J. Ball, '70
William A. Frink, '70
Larry Gray, '70
Jimmy L. Baker, '71
J. Hal Grossman, '71
Robert H. Lyons, Jr., '71
Howard H. Scott, '72
Stephen A. Nass, '75
Michael J. Sanders, '83
Scott A. Friedman, '84
John A. Zajac, '87
Steven W. Zellars, '88
Kevin M. Boyle, '90
James E. Bundschuh, Jr., '90

CHI

(Arizona)

George D. Gardner, '32
Alvin W. Gerhardt, '33
Franklin D. Lamb, '33
David J. Hall, '36
John A. McNary, '37
A. Jay Medford, '39
John C. Loving, '40
Andrew B. Marum, '40
Robert W. Ageton, '42
Theodore T. Brooks, '42
Alfred R. Diehl, '42
Robert H. Epley, '42
Oscar T. Lyon, Jr., '42
John P. Brennan, '43
John W. F. Dulles, '43
Fred S. Fiedler, '43
Edward L. Jones, III, '43
R. W. Aldrich, '47
Fred A. Foyle, '47
Frank E. McGinley, '47
Van Halen Soule, '48
Edward C. Wood, '48
Guy H. Ruggles, Jr., '49
A. E. Himebaugh, '50
Donald E. Womack, '50
S. Jack McDuff, '51
Melvin L. Redden, '51
Jack Smith, '52
Charles H. Hausenleek, '54
Charles B. Leonard, '54
Richard G. Guthrie, '55
James N. Warkomski, '55
James L. Armstrong, '56
Carlton E. Crall, '57
Charles G. Hammer, Jr., '58
James W. Simms, '59
James E. Forthman, '64
Richard G. Brush, Jr., '65
John E. Arnold, '67
Ken Humble, '67

John O'Kane Whistler, '67
 Stan Rice, '68
 Billie N. Thomas, '68
 Donald L. Newman, '71
 Tom L. Kirchner, '72
 Howard Ong, '72
 Bruce A. Stiver, '72
 Robert A. Cummings, '76
 Rinaldo DiCenzo, Jr., '80
 Craig H. Shaffer, '86
 Susan E. Anderson, '91
 Mark J. Gross, '92
 Loriann J. Pollak, '93
 Cheryl L. Gardner, '94
 Kathleen S. Scruggs, '94

PSI

(Montana Tech)

Robert W. Lawson, '37
 Elton A. Youngberg, '37
 George T. Hanson, '38
 Frank W. Bowdish, '39
 Laurence T. Eck, '40
 Judson H. Whitman, '47
 Tom Manuel, '50
 Gustav Stolz, Jr., '50
 Charles H. Hewitt, '51
 John A. Alexander, '52
 John L. Sutey, '68
 E. Donald Carkeek, '69
 Larry L. Harkins, '73
 John M. McCarthy, '73
 Dennis A. Franks, '86

OMEGA

(South Dakota Tech)

John F. Zietlow, Jr., '35
 Donald F. Matson, '38
 James E. Stevens, '40
 Donald V. Bigelow, '41
 C. Perry Beka, '43
 Arthur L. Allen, '44
 William R. Benn, '44
 Merne R. Judson, '44
 Robert L. Sandvig, '44
 James Solon, '44
 Jack E. Nelson, '47
 Neil W. Chauncey, '49
 Albert D. Schmidt, '49
 Charles W. Meyers, '50
 Keith D. Graham, '51
 Charles D. James, '51
 Lennis F. Shafraneck, '51
 Oral Van Buskirk, '51
 Grove A. Rathbun, '52
 Leon D. Estes, '53
 Roy R. Appleby, '54
 William T. Cohan, '55
 Arnold D. Doyle, '56
 Donald R. Godding, '56
 Duane B. Skogen, '56
 Roger A. Stapf, '56
 William E. Tucker, '56

Gary A. Radford, '60
 Aelred J. Kurtenbach, '61
 Douglas E. Aldrich, '62
 Jerome A. Takle, '64
 Keith Zell, '65
 David A. Lockmeyer, '68
 John W. Synhorst, '68
 Gary D. Callahan, '70
 Thomas J. Zeller, '70
 Ward A. Opitz, '72
 Larry V. Pearson, '72
 Gary Zoodsma, '76
 Douglas C. Schultze, '78
 Larry R. Todd, '78
 Scott A. Anderson, '86
 Kenneth M. Marko, '86
 Kurt A. Selzle, '86
 Mark R. Janssen, '88
 Kelly J. Whiting, '89
 Shawn D. Klabunde, '90
 Bradley A. Stensaas, '90
 Glen A. Wilcox, '90
 Dean P. Herll, '92
 Shon D. Anderson, '96

GAMMA BETA

(George Washington)

William J. Ellenberger, '30
 Philip J. Crossfield, '42
 George P. Kalv, '47
 Dwight F. Hastings, '48
 Glen H. Ballowe, '49
 Charles E. Chambliss, III, '49
 Frank H. Cullen, '49
 Martin A. Elf, '49
 Ramond W. Juncal, '49
 Elmer G. Sunday, '49
 Peter N. Repak, '50
 C. Edwin Becraft, '51
 John C. Held, '52
 Joseph A. Greblunas, '57
 Orron E. Kee, '57
 John R. Manning, '57
 Edward M. Boothe, '58
 Gerald K. Cornelius, '60
 Eliot D. Cohen, '63
 Marshall A. Levitan, '64
 Gordon E. Davison, '65
 Frank Moy, '65
 Lawrence J. Kastner, Jr., '68
 Marshall J. Azrael, '70
 Greg C. Eichert, '71
 Paul T. Blue, '73
 Edward A. Gold, '76
 Timothy A. Waire, Jr., '91
 Kara Morley Frech, '93
 Robert H. Huie, '97
 Sasha R. Paillet Koff, '97

DELTA BETA

(Louisville)

Philip A. Wagner, '43
 Vaughn Anderson, '44

2ND CENTURY SOCIETY MEMBERS



We welcome to the **Second Century Society** these
 Brothers who have remembered Theta Tau
 in their estate plans

Michael T. Abraham, Epsilon Beta '92

John W. F. Dulles, Chi '43

J. Hal Grossman, Phi '71

George K. Kostopoulos, Xi Beta '88

Duncan M. McIntosh, Chi '65

Wayne K. Milne, Phi '38

Otto Pfahl, Mu Beta '69

Robert E. Pope, Zeta '52

Ron Starr, Beta '67

Justin G. Wiseman, Xi Beta '95

In such ways, you also can provide assistance to our
 Fraternity and the Foundation beyond your own lifetime.

Contact the Central Office for more information on
 membership in the 2nd Century Society!

THETA TAU EDUCATIONAL FOUNDATION

CALL 800/264-1904 OR EMAIL CENTRAL@THETATAU.ORG

(ACTUAL LAPEL PIN IS DARK RED & GOLD, ~1" SQUARE)

Thomas M. Sumner, '48
 Rudolf H. Roggenkamp, '58
 Jerry C. Schmitt, '61
 Robert K. Hollenbeck, '64
 John W. James, III, '64
 Theodore A. Waffart, Jr., '64
 Stuart M. Hale, '67
 Joel S. Schwartz, '69
 Michael Spencer, '69
 Frank M. Stauble, Jr., '69
 James R. Allgeier, '74
 Michael A. Brennan, '75
 David F. Garber, '75

EPSILON BETA

(Wayne State)

Robert C. Comstock, '49
 Robert W. Brown, '51
 Charles D. Gillece, '52
 Charles W. Greening, '53
 Leonard S. Stokes, '54
 John A. Bauer, '56
 Paul Ortiz, '57
 Richard W. Dettloff, '59
 Harlan F. Worden, '59
 Robert F. Gurchick, '60
 Ray W. Schooley, '61

Richard D. Wisley, '65
 Mark F. Weberman, '69
 Gaetano Rizzo, '70
 Gary L. Smith, '70
 Luis A. Teran, '78
 Jeffery L. Blake, '88
 Michael T. Abraham, '92
 Roger L. Van Elslander, '92
 Steven T. Pochmara, '95
 Michael J. Smith, '96

ETA BETA

(Houston)

Otto C. Schellberg, '64
 Horst J. Paul, '65
 Wendell H. Brough, Jr., '66
 Fred B. Himburg, '66
 Charles F. Hall, '67
 Ronald W. Saums, '67
 William F. Trainor, Jr., '67
 Glenn R. Rieger, '68
 Warren M. Gentry, '70
 Jim E. Johnson, '73
 Christopher C. Webber, '80

THETA BETA

(Washington)

George A. Vickers, '65

IOTA BETA

(Detroit Mercy)

Cameron N. Lusty, '39
 Philip A. Falcone, '64
 William J. Goga, Jr., '65
 Donald R. Morgan, '65
 Edward M. Paddock, '65
 Theodore P. Kill, '74

KAPPA BETA

(Mississippi State)

William R. Trask, Jr., '65
 James G. Carr, III, '68
 Richard S. Walker, '69
 Hal B. Butts, '70
 Richard Holliday, '70
 Mark W. Schowalter, '71
 David T. McMillen, '75
 John D. Pierce, '77
 Gregory L. Sparks, '77
 Mike Graves, '80
 John Selvin Simpson, '81
 William Gregory Wall, '84
 Stephen C. Cayson, '87
 Kathryn E. Palmateer, '94
 Robin L. Zich, '95
 J. Matthew Clark, '99

LAMBDA BETA

(Tennessee Tech)

Stephen J. Barth, '67
 William M. Cloud, Jr., '67
 W. Michael Hairston, '70
 Mike L. Hampton, '70

Gary L. Sullivan, '70
 Jack W. Gill, '71
 David J. Irvin, '72
 Nicholas J. DeSantis, '73
 Steve A. Williams, '73
 Terry L. Weatherspoon, '74
 Dale E. Baese, '75
 William A. Freeman, '75
 Arda E. Lee, '75
 Michael L. Brown, '76
 John A. Breyfogle, '78

MU BETA

(GMI)

Otto Pfahl, '69
 Frank C. Sonye, Jr., '70
 Richard W. Landis, '71
 Ryan P. Provenzano, '72
 Eduard I. Vanags, '72
 Robert L. Harding, '74
 Edward W. Kern, Jr., '74
 Charles W. Knakal, '74
 Ernest W. Maurer, '74
 Werner E. Meier, '74
 Jacques D. Rietzke, Jr., '74

NU BETA

(Wisconsin-Platteville)

Jeffrey L. Kronser, '77
 Thomas J. Singer, '81
 Christian R. Heer, '82
 Christine Tellock Dulian, '86
 James R. Soltau, Jr., '86
 Marydanielle Kitts, '87
 Aaron M. Zimmerman, '89
 Kristine L. Ackerman, '92
 Steven J. Roehl, '93
 Steven R. Meyer, '94
 Alissa D. Knuteson, '95

XI BETA

(Lawrence Tech)

Joseph E. Abramczyk, '88
 George Kostopoulos, '88
 Mark J. Turczyn, '88
 Antonino V. Vitale, '88
 Franz P. Samson, '92
 Marco A. Bianchini, '96
 Christopher A. Stockman, '97

OMICRON BETA

(Michigan-Dearborn)

Jeffrey M. Hickson, '91

PI BETA

(Western Michigan)

Timothy E. Schultz, '90
 John B. Moran, '92
 Michael E. Wachowski, '93
 John C. Cerone, '94
 Roy E. Masters, Jr., '95

RHO BETA

(Ohio)

Jason M. Williams, '93
 Scott T. Goodwin, '95
 Todd G. Smith, '98

SIGMA BETA

(Wisconsin-Milwaukee)

Todd D. Becker, '93
 Garrett M. Forkner, '96

TAU BETA

(Southern Methodist)

E. Douglas Harris, '68
 Steven A. Bresnahan, '90
 Regan Eyerman, '91
 Tracy A. White, '93
 Mary Elizabeth Oppenheim, '98

UPSILON BETA

(Old Dominion)

Andrew S. Austin, '89

PHI BETA

(Oakland)

Arthur E. Stephenson, '91
 Sandy Haley, '98

CHI BETA

(Toledo)

Karri L. Sieler, '01
 Douglas A. Barker, '94
 Travis W. Bonnett, '94
 Brian J. Flynn, '96
 Steven M. Emerick, '97

PSI BETA

(Texas at Austin)

David G. Woods, '93
 M. Pilar Singletary, '94
 Sarah Dickson Woods, '96

OMEGA BETA

(Hofstra)

Robert J. Burnett, '93

EPSILON GAMMA

(Northwestern)

Anish K. Mehta, '94
 Rachel M. Zajano, '96

ZETA GAMMA

(Florida)

R. Eric Dawson, '98

ETA GAMMA

(Colorado)

Adam C. Pederson, '96
 Shana C. Worel, '98

NEWARK SCHOLARSHIP RECIPIENTS ANNOUNCED

Newark Electronics has provided scholarships for Theta Tau members for the second year. Newark's help has enabled our Educational Foundation and Fraternity to do great things for our student members in the last couple of years, and we look forward to many years of cooperation.



Suzanne M. Paden, Rho Beta '02, is the winner of the \$3000 Newark Electronics Scholarship for 2001. Suzie is a Chemical Engineering major at The Ohio University. She has served her chapter as Vice-Regent and is currently Regent, having served on and chaired many committees within the chapter. She

is Treasurer of Alpha Omicron Pi Sorority; Historian of the Society of Women Engineers; Engineering Ambassador to Russ College of Engineering and Technology; and a member of Tau Beta Pi, Order of Omega, Alpha Lambda Delta, and the American Institute of Chemical Engineers. Chemical Engineering was a logical choice because she has always enjoyed math and science and because chemistry was her favorite subject in high school. When she first became familiar with the role of the chemical engineer, she was intrigued by how chemical engineers are involved in making almost everything people use every day. After graduation, Suzie hopes to work as a process engineer and continue her studies with the goal of earning her MBA. She joined Theta Tau because she wanted to participate in an organization that would help develop her both personally and professionally, that would provide involvement in a variety of campus events, and that would be fun. Theta Tau met all of those requirements and more. Through the offices she has held in her chapter, Suzie feels she has developed her public speaking, organizational, and managerial skills.

David A. Geswein, Phi '01, is the winner of a \$1000 Newark Electronics Scholarship for 2001. David is a Mechanical Engineering major at Purdue University. He has served his chapter as Scribe and Regent, was voted Outstanding Student Member for 2000, and is now serving as Social Chairman. A strong interest in building things led to his choice of Mechanical Engineering. David has a special interest in electric utilities and the opportunities for engineers to develop new energy sources. Being a member of Theta Tau has helped him learn how to work with others and to become better at managing his time. He works part-time in a research machine shop and participates in ASME activities.



Paul M. Verdugo, Chi '02, is the winner of a \$1000 Newark Electronics Scholarship for 2001. Paul is an Electrical Engineering major at the University of Arizona. His interest in engineering was influenced by his father, a mechanical engineer. Through his experience installing stereo systems, he developed an interest in the electrical side of engineering. He hopes to work in the field of electrical engineering and to move up to a management position where he would run large projects. Paul has served on and as chair of several committees in his chapter. Through participation in Theta Tau activities, Paul has learned how to get along with others and especially to work as part of a team to accomplish goals. Paul is also active in the Society of Hispanic Professional Engineers and the American Tae Kwon Do Association.



- Special discounts
- New products
- Dedicated Reps
- Scholarship programs
- Sponsor of the Theta Tau Rube Goldberg Machine Contest
- Campus exclusives for education

NEWARK
ELECTRONICS

Just Call or Click

1-800-4-Newark www.newark.com

REGIONAL DIRECTORS APPOINTED



Craig H. Hopkins, Phi Beta '99, was initiated into Theta Tau in 1995. Craig served his chapter as Corresponding Secretary, Vice-Regent, and Regent. He also was Phi Beta Chapter's Delegate to the 1995 National Conference in St. Louis. Craig is from Alpena, Michigan, but opted for the "warmer climate" of

southeastern Michigan for his collegiate years.

He graduated from Oakland University with a BS in Chemical Engineering in 1999. He was named Phi Beta's Outstanding Student Member in 1996 in recognition of his extensive involvement with his chapter and other chapters in the area, with pledge, student, and alumni activities, and with social and professional development events. He was also involved in the establishment of Phi Beta's House Corporation which is actively seeking a chapter house.

He is currently serving the Fraternity as Great Lakes Co-Regional Director. Craig works for Schefenacker, an automotive supplier. His job has provided him the opportunity to visit and work in Germany, and he hopes soon to have the opportunity to work in that country for an extended period of time. He has a strong relationship with chapters in the Detroit area as well as others in the Great Lakes Region.



Jamie J. March, Omicron '99, graduated from the University of Iowa with a BS in mechanical engineering. He pledged during his freshman year. As a student he held the offices of Scribe, Vice Regent, and Regent. He was the Alternate to the 1996 Convention in Detroit and Delegate to the 1997 Conference in Dallas.

Jamie was hired by ETA to work on-site for Ford Motor Company building finite element models for body structure for Ford's Large and Luxury Car Vehicle Center. After working for ETA for seven months, he joined Ford Motor Company full time as a finite element analyst for the Lincoln Mercury Group. He is currently responsible for performing analyses for body structure NVH and durability and is pursuing a Master's Degree in Mechanical Engineering at Wayne State University.

His goal as Regional Director is to strengthen all the chapters in the Central Region. This will be a tough challenge for him because the closest chapter is over 250 miles away. His plan for the upcoming year is to improve communication with the chapters, to be better aware of what is going on with them, and to be able to help in any way that they need. In his free time he enjoys watching auto racing on TV, traveling to the tracks, and roller blading.



Arthur M. Partin, Tau '84 is currently serving as Atlantic Regional Director after four years absence from the national scene. Art served as Grand Treasurer from 1990 to 1996 and as Grand Inner and Grand Outer Guard prior to that. The National Fraternity also employed him as Extension Director in 1985. He represented Tau Chapter at several National Meetings while a student member and served two terms as Regent of Tau Chapter.

He helped in the reestablishment of Pi and Tau Chapters as well as in the organization of Upsilon Beta Chapter and the Central New York Alumni Club. He is a board member of the Tau of Theta Tau House Corporation.

Since graduating with a BSAE from Syracuse University, he has worked as a Fire Protection Engineer and has been employed by Professional Loss Control, a fire protection engineering consulting company, for the last 11 years. He and his wife Linda, and their two children, Kailey and Dan reside in Rosemont, Pennsylvania, a suburb of Philadelphia. For several years, Art's mother, who shares their home, has in her spare time made robes and blindfolds distributed by the Central Office to Theta Tau chapters

Brandon J. Satterwhite, Mu '98, has been appointed Southern Regional Director. Brandon pledged during his first semester at the University of Alabama and was active for the following 4½ years. During that time, he served his chapter as Treasurer for one year, as Philanthropy Chairman for three semesters, and as Alternate to the 1997 National Conference.



Brandon also worked as a co-op with Southern Research Institute in Birmingham. He was chosen as Outstanding Senior by Mu chapter and by the UA chapter of Pi Tau Sigma before graduating with honors in mechanical engineering. He currently works as a test engineer at Pratt & Whitney's West Palm Beach facility, and is pursuing a Master's Degree in Computer Science at Florida Atlantic University.

Brandon is enjoying extended travel in Europe this summer. His hobbies include scuba diving, ultimate frisbee, concert-going, and travel. Brandon is looking forward to working with all of the chapters in the Southern Region and helping them to work with each other. He especially enjoys the opportunity to visit chapters in his region if there is an Alabama football game being played there that weekend. He has actively sought to identify extension opportunities in the Southern Region as well.



Robert W. Somerton, Jr., Iota Beta '99, was initiated in 1996. He served as the Treasurer, Vice-Regent, and Regent in succession during his first three years as a student member. Rob represented his chapter as the Alternate to the 1997 National Conference and served as Delegate to the 1998 National Convention.

Upon graduation with a Bachelor of Mechanical Engineering degree, Rob was asked to serve as the Adviser for Iota Beta Chapter. He was appointed Great Lakes Co-Regional Director following the 2000 National Convention.

Rob completed co-op work with General Motors Corporation at the Milford Proving Grounds during his undergraduate career at the University of Detroit Mercy. After joining DaimlerChrysler Corporation in 1999, he returned to the University of Detroit Mercy to complete his Master's degree in Mechanical Engineering.

Rob continues to attend alumni and student activities of his chapter. As Regional Director, his first goal was realized when rush activities spread among numerous chapters in the region and by the outstanding attendance at the Fall 2000 Regional Meeting at Sigma Chapter. A second goal was achieved with the success and participation in the Great Lakes Founders' Day Dinner Dance last October.

Guy C. Rooker, II, Chi '98, is in his second year as the Western Regional Director. He pledged Chi Chapter at the University of Arizona in Spring of 1996 and graduated with a degree in Systems Engineering in December 1998. During college, Guy served as Outer Guard and headed numerous committees. He was also named Chi's Outstanding Student Member for 1997.

Guy lives in Denver, Colorado, with his wife Janis. He works for Structural Dynamics Research Corporation (SDRC) as an Applications Engineer. Responsibilities of his job include visiting clients such as Lucent Technologies, Raytheon, General Motors, and Lockheed Martin to customize the systems engineering tool SLATE, and to consult on their systems engineering processes.

Brother Rooker's Theta Tau membership comes with a pedigree. His grandfather is Lawrence B. Farnum, Beta '41, and his great great grandfather is Arthur E. Seaman, Beta Hon. 1895.

Guy and his wife play in an indoor soccer league, make numerous trips to the mountains for the Colorado ski season, and enjoy travel while visiting family and friends. Guy also loves a good game of golf, tennis and watching the Broncos beat the Raiders.



CALLING, CONTINUED FROM PAGE 3

"My involvement in engineering and Theta Tau at the University of Iowa prepared me well for my 'second' career. There I learned teamwork, discipline and the organizational skills that I have used all these years. As a Christian and an engineer, I have been most privileged in life to have had two very fulfilling vocations."

When he was only eleven, **Ken Roberts**, Pi '74, was inspired to become an engineer through correspondence with Wernher von Braun. But three years into the aerospace engineering program at UVA, he saw little demand for engineers in that field and so made a monumental switch to the College of Arts and Sciences. It was at that time that he reports receiving Jesus Christ as his Lord and Savior through a co-worker at a summer job. His final year in college was one of change and growth. He graduated with a BA in Music and accepted a job writing equipment advertising for a stereo chain. After five years, he went to work for AAA and was promoted to marketing manager of its TourBooks. During one of his travels on this job,

he fell in love with the West and discovered the richness of our Native American heritage. When he married Nancy, they honeymooned out West.

Six months later they started asking God what He would have them do with their lives. They interviewed and were accepted as missionaries at West Indian Ministries, a mission to Native Americans in Arizona and New Mexico, and soon afterwards their daughter Becky was born. They put the career change on hold when he enrolled in seminary while working full time. For almost ten years, he worked at Pentagon Federal Credit Union, learning direct mail, video production, desktop publishing, and database management while completing seminary at night and raising funds to go to the mission field. Then nine years ago, they moved to the Navajo Indian Reservation. He and his wife have become much involved in the lives of many Navajos, teaching youngsters through the Awana club, counseling scores hurting from broken relationships, alcohol abuse, physical abuse, and loneliness. He has taught, preached, written brochures and newsletters, designed the mission's

donor database, and done the book-keeping. He and Nancy have been foster parents for many years, and he is chairman of the local Foster Care Review Board. Three years ago they adopted Calvin, a half-Navajo, 4 years old at the time, who had been abandoned by his parents. Now Ken is taking more seminary classes by distance education and considering God's call to the pastorate as distinguished from Christian work as a missionary.



KEN ROBERTS WITH FIRST FOSTER CHILD, YVONNE

THETA TAU RUBE GOLDBERG MACHINE CONTEST



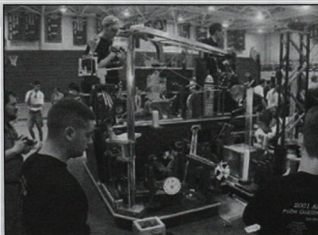
In honor of the 200th anniversary of Johnny Applesseed's planting apple trees across the Midwest, the 2001 Theta Tau Rube Goldberg™ Machine Contest task was to select, clean, and peel an apple. The contest was held at West Lafayette High School just outside the Purdue University campus on April 7, 2001. Five collegiate teams competed in the national contest, and two high school teams demonstrated their machines.



PURDUE'S WINNING TEAM DISPLAYS THE 1ST PLACE TROPHY

National sponsors were Dell Computer and Newark Electronics with Newark representative Mark Justice on hand to assist with the judging. Purdue University Mechanical Engineering Professor Arvind Raman and Executive Director Abraham also participated as judges. The Theta Tau Colony at the University of New York at Buffalo was participating for the first time and is sure to be back stronger next year. Vanderbilt University was also entered. The third place team was The University of Texas at Austin and winning second place was The University of Toledo with an Olympic theme. The People's Choice and first place award went to the home team of Purdue University.

Judging is based on successful completion of the task, number of steps in the operation, creativity and complexity of the device, and Rube Goldberg spirit. Each machine must successfully run twice. Local Chair **Fernando Cordero**, Phi '02, and National Contest Chair **Chris Piano**, Phi '01, teamed up for a very successful event at West Lafayette High School following several years at the Elliott Hall of Music at Purdue. The gymnasium afforded a greater opportunity to bring the spectators closer to the action and helped create a greater energy and enthusiasm that will be carried on in the years ahead as the contest grows. Our thanks to the sponsors and Phi Chapter for their help in this event. The 2002 challenge will be to secure, raise, and wave a national flag. Interest is sure to increase as the chapter, national Fraternity, Educational Foundation, and Rube Goldberg Inc. cooperate more fully in the promotion of this event. Visit the Theta Tau Rube Goldberg web site www.rube-machine.com for more information.



THE UNIVERSITY OF TEXAS AT AUSTIN'S ENTRY TOOK 3RD PLACE

ALPHA

Donald Richard Johnson, 1939, 1/27/01
 Douglas Jerome Leu, 1978, 3/0/01
 James Edward Schelske, 1948, 5/21/00
 Vincent M. Spoor, 1937, 6/26/00

BETA

Paul Victor Brechtelsbauer, 1961, 3/16/01

GAMMA

John Marcus Gardner, 1933, 4/29/00
 Louis Blauvelt Parks, 1948, 5/8/99

DELTA

Edward Samuel Monarchi, 1956, 8/16/00
 Frank James Opatrny, 1947, 10/24/99
 Grant Russel Rubly, 1928
 Robert Fletcher Simokat, 1928, 2/28/01
 Donald L. Snow, 1939, 5/7/01

EPSILON

Charles Aubrey Lindsay, 1935, 5/10/00

ZETA

Marvin Wood Heter, 1934, 5/17/00

ETA

Robert Sanford Riley, 1927, 7/13/00

THETA

William Thomas Griffiths, Jr., 1941, 2/17/01
 John Kelly Johnson, 1923, 5/13/01
 Walter F. W. Maack, 1940, 12/20/96

IOTA

Arthur Samuel Macke, 1932, 3/15/99

LAMBDA

Morton C Larsen, 1944, 3/4/01
 William John Murray, 1936, 2/1/01

MU

David Chalmers London, 1931, 2/6/00
 Louis Harris Pfau, 1945, 2/19/01

NU

Walter Bernard Wigton, 1932, 3/11/01

OMICRON

Walter LeRoy Jean, 1952, 12/7/00
 Elwin Lohse, 1933

PI

Randolph Sherman Nunnally, 1953, 3/25/01
 John Herbert Sidebottom, 1940, 8/9/7

RHO

Robert Ernest Cato, 1951, 8/19/00
 Edward Pruden Davidson, 1941, 8/17/99
 Robert Douglas McBrayer, 1960, 7/31/99
 T. Alexander Rivenbark, Jr., 1937, 6/24/00

SIGMA

John Edward DeWitt, 1956, 2/23/01

UPSILON

Joe Troy Pendleton, 1948, 12/5/00

PHI

Marshall Richard Chandler, 1933, 6/25/01
 Winfield Scott Heath, 1931, 2/2/01

CHI

Edward Pace Fraps, 1936, 2/25/99
 Frederick Dayton Kemmeries, 1950, 9/23/00

PSI

Lewis Seward Prater, 1937, 6/19/00

OMEGA

Dennis Emerson Dahlgard, 1932, 5/2/01
 Charter Member
 Donald Frederick Matson, 1938, 7/25/01
 Woodrow Charles Whitham, 1937, 12/18/98
 Verl Richard Wilmarth, 1948, 10/10/00

GAMMA BETA

Claude Chester Dimmette, Jr., 1950, 2/21/01
 Douglas William Lowe, 1967, 2/16/01
 Elmer George Sunday, Jr., 1949, 2/22/01

DELTA BETA

Richard Hart Cornwall, 1948, 4/26/01

Notice of member's passing may be sent to the Theta
 Tau Central Office. Please indicate date of death,
 surviving family members, and addresses if known.

THETA TAU - JUST THE FACTS

As the first engineering fraternity founded, Theta Tau has always been able to claim distinction as the oldest, and (from point of view of number of initiates) the largest. The Theta Tau Bylaws list ten fraternities considered competitive with our Fraternity. Three are engineering sororities. Of the others, the two which include those in all branches of engineering are Sigma Phi Delta and

Triangle. Theta Tau also surpasses these in number of student chapters with the national Fraternity installing 21 chapters since 1986.

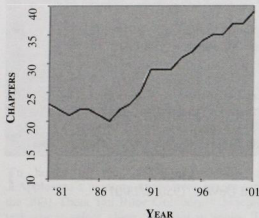
Theta Tau, founded as a professional engineering fraternity in 1904, has 39 student chapters and has initiated 28,765. Its Central Office was established in 1963.

Triangle, a fraternity of engineers, architects, and scientists, founded in 1907, established a full-time office in 1962. It has 29 chapters and has initiated 23,012.

Sigma Phi Delta, a social professional fraternity of engineers, was founded in 1924 and established its national headquarters this year. It has ten chapters and has initiated nearly 8,000.

Just the facts, but the facts bear out why we say:

THETA TAU PROFESSIONAL ENGINEERING FRATERNITY
THE NATION'S OLDEST, AND STILL FOREMOST,
FRATERNITY FOR ENGINEERS



THETA TAU CHAPTERS

ALPHA

University of Minnesota

BETA

Michigan Technological Univ.

ZETA

University of Kansas

MU

University of Alabama

XI

Univ. of Wisconsin-Madison

OMICRON

University of Iowa

PI

University of Virginia

RHO

North Carolina State Univ.

SIGMA

Ohio State University

TAU

Syracuse University

UPSILON

University of Arkansas

PHI

Purdue University

CHI

University of Arizona

OMEGA

S. Dakota Sch. of Mines & Tech.

GAMMA BETA

George Washington University

EPSILON BETA

Wayne State University

IOTA BETA

University of Detroit Mercy

KAPPA BETA

Mississippi State University

LAMBDA BETA

Tennessee Technological Univ.

NU BETA

Univ. of Wisconsin-Platteville

XI BETA

Lawrence Technological Univ.

OMICRON BETA

Univ. of Michigan-Dearborn

PI BETA

Western Michigan University

RHO BETA

Ohio University

SIGMA BETA

Univ. of Wisconsin-Milwaukee

TAU BETA

Southern Methodist University

UPSILON BETA

Old Dominion University

PHI BETA

Oakland University

CHI BETA

University of Toledo

PSI BETA

University of Texas at Austin

OMEGA BETA

Hofstra University

DELTA GAMMA

Arizona State University

EPSILON GAMMA

Northwestern University

ZETA GAMMA

University of Florida

ETA GAMMA

Univ. of Colorado at Boulder

THETA GAMMA

Univ. of Michigan at Ann Arbor

IOTA GAMMA

University of Cincinnati

KAPPA GAMMA

Virginia Commonwealth Univ.

LAMBDA GAMMA

Clemson University

Theta Tau

Professional Engineering Fraternity

655 Craig Road, Suite 128

St. Louis, MO 63141-7168

If the addressee has moved or is deceased, please return to **Theta Tau** this portion of the cover showing new address or date of death. Thank you.

NONPROFIT ORG.

U.S. POSTAGE

PAID

JEFFERSON CITY, MO

PERMIT NO. 210

ADDRESS SERVICE REQUESTED