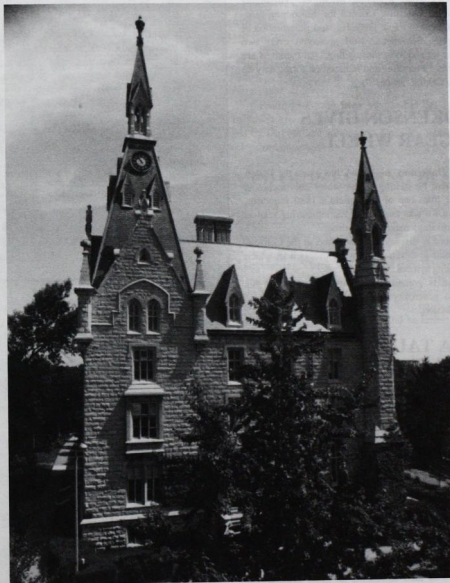


# *The GEAR of Theta Tau*

---

Volume LXXVII, No. 1

Spring 1996



**NORTHWESTERN UNIVERSITY  
CHAPTER INSTALLED**

## 1996 NATIONAL CONVENTION

Theta Tau returns to Detroit for its Convention, August 15-18. Headquarters is the Royce Hotel Detroit Metro Airport, 31500 Wick Road, Romulus, Michigan. Highlights include election of the Executive Council for the coming biennium, induction of Hall of Fame laureates, and presentation of awards including the Schrader Award presented every two years to the chapter judged most outstanding. All members are encouraged to attend. Programs and registration forms may be requested from the Central Office.

## HOKENSON GIVES GEAR WHEEL

**Lynn N. Hokenson**, Alpha '44, has given the Fraternity a wooden pattern for casting a gear wheel 26½ inches in diameter. It came from one of Springfield's 1880 foundries. That central Ohio town was famous for manufacturing reapers and other major farm implements of that time.

It is planned to display the gear wheel at the Convention this summer and to develop an award program in which this will be a traveling symbol.

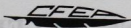
Theta Tau is grateful to Brother Hokenson for his thoughtfulness and generosity in providing this fine antique symbol of our profession.

## THETA TAU WEB PAGES

Our national Fraternity web pages are now on-line thanks to Grand Marshal **Glen A. Wilcox**, Omega '90. The address of our pages is [www.thetatau.org](http://www.thetatau.org). Suggestions should be emailed to [glen@thetatau.org](mailto:glen@thetatau.org), our webmaster.

## HELP IDENTIFY SCHOOL MASCOTS

We have heard that a number of members (including one current national officer) have at one time or another served as the costumed mascots of their schools proudly representing them at athletic events, etc. *The Gear* wants to run a feature story on these members with pictures of them in and out of costume, together with their comments on these experiences. Please send information on yourself or others promptly to the Central Office.



## CONTENTS

Features	Page
Honoring Theta Taus .....	1
Alumni Hall of Fame .....	2
Chapter at Northwestern .....	5
Colorado Colony .....	5
Communiting Across Cultures .....	6
1995 National Conference .....	7
All in the Family .....	7
Regional Directors .....	8
Words of Wisdom .....	9
Goldberg Stamp .....	11

### Departments

Alumni Notes .....	4
Chapter News .....	10
In Memoriam .....	12
Additions to Membership .....	13
Alumni Organizations .....	Cover
Available for Employment .....	Cover

**Cover Photo:** University Hall, a landmark on the campus of Northwestern University, Evanston, Illinois.

### EXECUTIVE COUNCIL

Grand Regent .....	Dean W. Bettinger
Grand Vice-Regent .....	Lee C. Haas
Grand Scribe .....	Michael T. Abraham
Grand Treasurer .....	Arthur M. Partin
Grand Marshal .....	Glen A. Wilcox
Grand Inner Guard .....	Michael D. Livingston
Grand Outer Guard .....	Mark R. Janssen
Student Member .....	Nicholas C. Croce
Delegate-at-Large .....	Randall J. Schetz
Executive Director .....	Robert E. Pope

### BOARD OF EDITORS

#### *The Gear of Theta Tau*

Michael T. Abraham	Lawrence R. El-Hindi
Sean P. Donnelly	Robert E. Pope

### CENTRAL OFFICE

Theta Tau	314/994-1904
655 Craig Road, Suite 128	800/264-1904
St. Louis, MO 63141-7168	Fax: 314/997-3234
Internet: <a href="mailto:Central@ThetaTau.org">Central@ThetaTau.org</a>	

*The Gear of Theta Tau* is the official publication of Theta Tau Professional Engineering Fraternity and is published in the fall and spring. The magazine is an educational journal devoted to matters of fraternity interest and is sent at no cost to alumni whose addresses are on record. Send change of address to Theta Tau Central Office, 655 Craig Road, Suite 128, St. Louis, MO 63141-7168. Special third class postage has been paid at Jefferson City, MO. © 1996 Theta Tau.

With this article, we continue the series on awards and structures named in honor of Theta Tau members. Brothers are asked to submit information for future articles in this series.

## ROBERT L. SANDVIG PROFESSORSHIP

An endowed Professorship named in honor of **Dr. Robert L. Sandvig**, Omega '44, was established six years ago. He is retired Head of the Department of Chemistry and Chemical Engineering at South Dakota School of Mines and Technology and served as Omega Chapter Adviser in the 1960s. Funding for the Professorship was provided through the generosity of alumni and companies hiring SDSM&T chemistry and chemical engineering graduates. The annual award provides funds for faculty to use in pursuing professional development activities.

## SCHEETZ PFA PRESIDENT

**Randall J. Scheetz**, Omicron '89, immediate Past Grand Regent of Theta Tau, was installed as



President of the Professional Fraternity Association at its 1995 Convention in Baltimore. He has served on the PFA Board of Directors since 1991. As

President-Elect this past year, he was program chairman for the PFA Annual Meeting in the fall.

At its opening session, the PFA honored **Robert E. Pope**, Zeta '52, with its first Distinguished Service Award for his years of continued interfraternity service. He served as Executive Secretary of the PIC before the 1977 merger, and then as PFA Executive Secretary until 1986.

## SIGLER OUTSTANDING STUDENT MEMBER

At the 1995 National Conference, Philip Sigler KB '95, was announced as the National Outstanding Student Member for the year 1994.

In May 1992 Philip was initiated into Theta Tau. As a student member, he served as Regent, Convention Delegate, and Professional Development Committee Chairman, and successfully guided two little brothers through the chapter's pledge program to membership in our Fraternity.



Philip has said, "My Theta Tau experiences were the most meaningful part of my college years, and I continue to be blessed by relationships I developed in school. I feel very fortunate to be a part of Theta Tau."

Philip graduated from Mississippi State University with a bachelor's degree in mechanical engineering. Currently, he is employed by DuPont and working in DeLisle, MS, as a Research and Development engineer.

## DIGET NAMED OUTSTANDING DELEGATE

**Derek L. Diget**, Pi Beta '96, was honored as the Outstanding Delegate of the 1995 National Conference. Following the tradition begun at the 1941 Convention also held in St. Louis, the student Delegates made the selection by secret ballot. A native of Kalamazoo majoring in aeronautical engineering, Derek was initiated into Theta Tau in the spring of 1990. Currently his chapter's Regent, he previously served as Pledge Instructor, Scribe, and Vice Regent. A regular participant in national Fraternity events, Derek had previously represented his chapter as Alternate at the 1992 Convention and as Delegate in 1994.



## WEBER RECEIVES BALFOUR FELLOWSHIP

**James D. Weber**, Nu Beta '95, was awarded a Lloyd G. Balfour Fellowship for \$3000. The Fellowships provide financial assistance to full-time students enrolled in accredited graduate or professional schools. They are open to fraternity members and are awarded by the National Interfraternity Foundation.

Throughout his 3½ years as a student member, Jamie was very involved in Fraternity activities, serving as Regent during his senior year.

Beyond his activities in Theta Tau, Jamie was editor of several campus publications, a member of the golf team and of Phi Kappa Phi,



Eta Kappa Nu, and Tau Beta Pi. He received the Chancellor's Medallion for Leadership in Student Organizations. His memorable experiences include attending the American Power Conference in the spring of 1993. Through this conference and discussions with two of his professors, Jamie developed his interest in Power and Energy Systems, an interest reinforced through two summers as an intern at Wisconsin Power and Light in Madison.

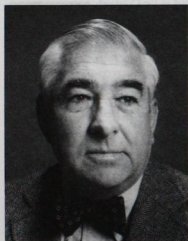
Having received his BSEE degree from the University of Wisconsin-Platteville, he is now pursuing a master's degree in electrical engineering at the University of Illinois at Urbana-Champaign.

Continued on page 3, SQUIRES

# Alumni Hall of Fame ΘΤ

The Alumni Hall of Fame recognizes exemplary service to the member's profession or to the Fraternity. It was established by the 1986 Convention with the induction of the Founders. Nominations may be made by chapters, alumni associations, or the Executive Council. A maximum of five may be inducted at the national meeting each year.

**Henry W. Coil, Jr., Epsilon '54,** was honored for service to his profession. For the past 24 years, he has served as president of his company, Tilden-Coil Constructors, Inc., a general contracting and construction management firm that has projects throughout the western states. Included are commercial, industrial, medical, and institutional facilities.



He received his BS in Civil Engineering from the University of California and his JD from Western State University College of Law in 1971. Serving in the US Navy, 1955-57, he was in charge of construction for the Cubi Point Naval Air Base, a \$350,000,000 project. Employed in civil engineering and construction during the next 14 years, he became chief engineer, Alcan Aluminum Corp. Riverside Plant.

He has served as board member, chairman or president of many community and professional organizations, including Boy Scouts of America, Inland Empire Council President; and Councilman, City of Riverside. He is Chairman of the Sweeney

Art Gallery and on the Board of Trustees at the University of California, Riverside, Trustee of the Riverside Community College, Riverside Community Hospital, California Memorial Masonic Temple in San Francisco, and the Banking Board of the Bank of America. Brother Coil gave the Conference Banquet Address (see page 9).



**Paul Endacott, Zeta '23,** was recognized for service to his profession. He was Captain of the 1923 National Championship KU basketball team and was named National Collegiate Player of the Year. He was enshrined in the National Basketball Hall of Fame in 1971. His player jersey was retired in 1992. He received his BS in Civil Engineering from the University of Kansas, and was the first ever to be named Honor Man of the University. He is a member of Sigma Xi and Tau Beta Pi.

Brother Endacott's entire professional career was with Phillips Petroleum Company, rising to the positions of President, Chief Operating Officer, and Vice-Chairman of the Board before retirement in 1967. He is a member of the National Petroleum Council and the American Petroleum Institute. He participated in the latter's early efforts to standardize oil field equipment, especially that relating to producing and transporting oil and gas. His special interests led to 20 patents mostly in the liquefied petroleum gas phase of the industry.

The University of Kansas honored

him with its highest award, the Distinguished Service Citation, in 1948. He received the KU Engineering Council Award in 1951 and the 1977 Ellsworth Medallion. He is Trustee and Chairman of Frank Phillips Foundation, Inc. His family and the Endacott Foundation were instrumental in providing facilities for KU faculty and staff retirees in the K.S. (Boots) Adams Alumni Center at his alma mater.

**Winfield S. Morris, Rho '24,** was honored posthumously for service to Theta Tau and to his profession. He received his BS in Civil Engineering from North Carolina State and his JD from the Oklahoma City School of Law. He was a charter member and first Regent of Rho Chapter.

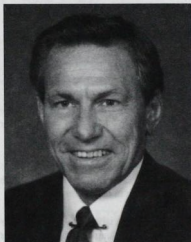


The early years of his career were with the Old Empire Gas and Fuel Company which later became Cities Service Oil Company, the US Bureau of Mines, and the Indian Territory Illuminating Oil Company. He became field chairman of East Texas Engineering Association in 1936 and then joined in organizing the East Texas Salt Water Disposal Company in 1942 as Executive Vice President and General Manager. He served as its President from 1958 until his retirement in 1967.

In 1956, he was appointed to the Atomic Energy Commission to study the disposal of atomic waste. The author of four



books, and a contributor to several petroleum engineering oil and gas journals, he served as President of the American Society of Petroleum Engineers. In his hometown of Kilgore, Texas, he was a member of the Presbyterian Church where he taught the Men's Bible Class for 27 years. He was a Paul Harris Fellow and served as President of the Rotary Club, and as President of the Chamber of Commerce and of the United Way. He was a 32<sup>nd</sup> degree Mason and a Shriner. He passed away in 1991. His wife Thelma accepted the plaque and gave a touching response at the Conference Banquet.



**Lloyd E. Reuss, Iota '57**, was honored for service to his profession. He received his BS in Mechanical Engineering from University of Missouri at Rolla and is a graduate of the Senior Executive Course at MIT. He is a member of Pi Tau Sigma, Tau Beta Pi, and the Society of Automotive Engineers. He served as a First Lieutenant in the US Army Corps of Engineers.

Brother Reuss retired from General Motors in 1992 after 36 years of service and became a member of the GM Corporate Advisory Council. In May 1993, he was named Executive Dean of the Center for Advanced Technologies at Focus:HOPE in Detroit, Michigan, where he serves as head of the industry/university engineering and education programs. He is Chairman of the Board of Trustees of Lawrence Technological University and a Trustee of Vanderbilt University and of the Louisville Presbyterian Theological Seminary. He is on the Executive Committee of the Detroit Symphony

Orchestra and Chairman of the Endowment Committee. In 1992, Brother Reuss received the Engineering Society of Detroit Foundation's prestigious Leadership Award, honored for his significant contributions to the engineering profession and his outstanding leadership in the fields of science and engineering. He received the Society of Automotive Engineers' "Medal of Honor" in 1995 for his leadership of SAE technical and educational activities.

**Charles E. Spahr, Zeta '34**, was recognized for service to his profession. He received his BS in Civil Engineering from the University of Kansas and attended the Harvard Graduate School of Business Administration. He holds honorary doctorates from Fenn College (now Cleveland State University) and Baldwin-Wallace College, and the Distinguished Service Citation, KU's highest honor.



Brother Spahr retired as Chairman and CEO of Standard Oil Company of Ohio in 1977. He had played a principal role in the financing and development of a major portion of the Prudhoe Bay oil field in Alaska and construction of the Trans-Alaska pipeline which has been conveying oil since early 1977. This is perhaps the most significant engineering and construction achievement by private enterprise during this century. Its construction required building a highway from Fairbanks north across undeveloped wilderness to Prudhoe Bay, 200+ miles north of the Arctic Circle, and spanning the Yukon River with a major bridge that remains the only one crossing that river.

He received the 1977 National Human Relations Award from the National Conference of Christians and Jews; the 1978 Alumni Achievement Award, Harvard Business School Association; the 1980 Gold Medal for Distinguished Achievement, American Petroleum Institute; and the 1983 Ellsworth Medallion, University of Kansas. The Spahr Library located at the KU School of Engineering was named in his honor. He is a Life Trustee of the KU Endowment Association and lifelong Honorary Chairman of the Board of the International Center for Artificial Organs and Transplantation.

(Continued from page 1)

## SQUIRES HONORED

**Robert G. Squires, Phi** Honorary '57, Chemical Engineering Professor and Co-op Coordinator at Purdue University, received the Chester E. Carlson Award presented by the American Society for Engineering Education (ASEE). He was cited for developing and disseminating computer simulation/video modules of real problems and motivating students through hands-on experiences in real plants.

## BAUMGARTNER

### Young Engineer of the Year

**Timothy D. Baumgartner, P.E., Upsilon '89**, has been named Young Engineer of the Year by the Georgia Society of Professional Engineers. He is Project Engineer, EMC Engineering Services, Inc., in Savannah, and is the proud father of daughter Courtney Lynn born March 3, 1995.

## LARSEN

### Into Transportation Hall of Honor

**Wallace Larsen, Omega '53**, was inducted into the South Dakota Transportation Hall of Honor in October of 1995. Brother Larson retired as Director of Engineering and State Highway Engineer in 1993.

**A** **Jamie Laughlin**, '90, received his MBA from Arizona State in May, 1995. He is Product Marketing Engineer, Advanced Micro Devices, Sunnyvale, CA.

**Kent Kolstad**, '95, is a field engineer with Schlumberger Wireline Services in Victoria, TX.

**B** **James M. Zuidema**, '91, is an electrical sales engineer with Invetech and lives in Appleton, WI.

**Z** **Jon M. Edmonds, P.E.**, '62, is President of his own firm, Edmonds Engineering Co., Refrigeration Design & Evaluation Services, York, PA.

**I** **Kenneth N. Wygant**, '44, retired from AT&T in 1978. He and his wife enjoy retirement in Beverly Hills, FL.

**M** **W. Edward Lear**, '42, at the University of Florida, was the first recipient of annual Pi Tau Sigma Outstanding Professor Award.

**E. Anthony Gabel**, '79, Southern Regional Director, is TQM Engineer at Mercedes-Benz U.S. International in Tuscaloosa, AL.

**Kenneth A. Voss**, '95, is a software engineer with AT&T Bell Laboratories in Atlanta, GA. He married **Robin Colston**, '95, on January 20, 1996.

**O** **Todd M. Feldman**, '89, is a project structural engineer with Brooks Borg Skiles in Des Moines, IA.

**Bruce E. Ankenbauer**, '91, is an advanced statistical process engineer with 3M and lives in Martinsburg, WV.

**Denise A. Munoz**, '92, married Daniel Scott Bechen on September 23, 1995. They live in Hinsdale, IL.

**P** **Marcus B. Crotts**, '53, has been elected to a two-year term as an international director of the Society of Manufacturing Engineers.

**Lee C. Haas**, '62, Grand Vice-President, has retired from IBM. He plans to finish work on his Ph.D. dissertation soon, and will continue his dedication to Theta Tau.

**Jonathan E. Ferrell**, '91, is employed in the system operating center with Duke Power.

**T** **Sean Donnelly**, '88, has accepted a position with Xerox in Rochester, NY.

**Brian Kearney**, '95, is environmental engineer with Camp, Dresser & McKee in North Mankato, MN.

**Y** **Willis Watkins**, '80, Director of Silicon Solutions Center with Rosemount, Inc., lives in Chaska, MN.

**Erik Meinholz**, '93, is a senior software consultant with COMSYS, Inc., and lives in Washington, DC.

**Φ** **Richard D. Ruh**, '70, is a production manager for City Machine in Muncie, IN.

**Michael P. McMillen**, '95, is engaged to Julia S. Baker with the wedding planned for August 10, 1996. He is employed by Shannon and Wilson, Inc., and lives in Glencoe, MO.

**X** **William A. "Bill" Safieh**, '93, former Executive Council Member, is software developer with Mystech Associates. He and his wife Sheryl live in Sierra Vista, AZ.

**Ω** **Duane Skogen**, '56, enjoyed the 1995 SDSM&T Reunion and has challenged others in his class to attend the next one.

**John Rathbun**, '84, is general manager with Austin Powder-Chile and lives in Santiago, Chile.

**Dean Herll**, '92, and Trina report the birth of Courtney Susan on November 13, 1995. He is project manager, Buskerud Construction, Inc., Dell Rapids, SD.

**ΓΒ** **Mohab Akhnouk**, '92, is Director of Projects for ORASCOM, one of the largest companies in Egypt. On St. Patrick's Day, he had breakfast in Cairo with **Bob Pope**, Zeta '52, Executive Director.

**Kara M. Morley**, '93, is consulting for Coopers & Lybrand, pursuing

an MBA at Villanova, and living in Wayne, PA.

**Jason B. (Jay) Newlin**, '94, is a test engineer with TRW Automotive and lives in Mesa, AZ.

**David G. Hesprich**, '95, is a graduate student at GWU in DC.

**EB** **Jerome R. Palardy**, '91, former Executive Council Member, and **Louise M. Palardy**, Phi Beta '88, are the parents of Ashley Isabelle Palardy, born March 8.

**KB** **Steve Williams**, '85, is working for Anderson Engineering in Hattiesburg, MS.

**Hal Manuel**, '95, is a software engineer with E-Systems in Garland, TX.

**Philip D. Sigler**, '95, is living in Long Beach, MS, and working for DuPont Chemical.

**MB** **John C. McQueen**, '71, is a project manager with TDMA Forum in Massillon, OH.

**NB** **Christian R. Heer**, '82, is working with his wife at her collection agency and lives in North Charleston, SC.

**Steve R. Mayer**, '94, was elected Secretary of UW-P Engineering Alumni Association.

**Daniel C. Roehrdanz**, '96, is a civil engineer with Inspec, Inc., in Milwaukee, WI.

**PB** **Jon Leuthaeuser**, '95, is a research associate at Ohio University and lives in Athens, OH.

**ΣΒ** **Rick Ondrejicka**, '90, is an electrical engineer with Marquette Electronics in Milwaukee, WI.

**Stephen E. Day**, '95, is product engineer with Courtauld's Performance Films, Vacuum Coating Division, and lives in Martinsville, VA.

**ΦΒ** **Louise M. Palardy**, '88, and **Jerome R. Palardy**, Epsilon Beta '91, are the parents of Ashley Isabelle Palardy born March 8.

# EPSILON GAMMA CHAPTER INSTALLED AT NORTHWESTERN

by Cathy Starr, EI '98

The Northwestern University Colony in Evanston, Illinois, was installed as Epsilon Gamma Chapter on November 18, 1995.



*Plaza in front of the Technological Institute, Northwestern.*

Members representing 21 chapters and spanning more than 50 years were on hand to witness the initiation of 24 charter members, headed by **Rachel Zajano**, '96. In a second ceremony, Grand Regent **Dean W. Bettinger** initiated an additional student member into Epsilon Gamma Chapter. Events following the Ritual included a Banquet after which guests were treated to inspirational words from former Grand Regent **Randy Scheetz** and Executive Director **Bob Pope**. Jerome Cohen, Dean of McCormick School of Engineering and Applied Sciences, welcomed the new chapter on behalf of the University. Alumni initiated as charter members then presented the new chapter with a Theta Tau flag.

The enthusiastic student members of this new chapter, together



*Grand Regent Bettinger presents the chapter charter to **Rachel Zajano** '96, and **Sanjay Saxena** '94.*

with a group of supportive alumni, promise a bright future for Theta Tau at Northwestern University.

## NEWEST COLONY IN THE ROCKIES

Theta Tau Beta was certified as the University of Colorado at Boulder Colony of Theta Tau on November 4, 1995.

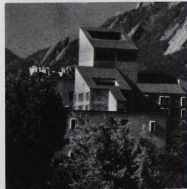


*Theta Tau Colony members on the staircase at the Koenig Alumni Center where the Certification Ceremony, Reception, and Banquet were held.*

The local fraternity had been organized in late spring 1994. Grand Regent Bettinger presided at the Ceremony through which thirteen were initiated into the new colony. The Colorado Colony is now concentrating on growing and emphasizing Theta Tau principles with its next goal: to become a chapter!

In addition to the Grand Regent and the Executive Director, **Richard "Trey" Wiley**, Western Regional Director, and **Brad D. Besmer**, Past Grand Vice-Regent, were among those participating. In all, the guest list included members representing seven chapters.

On a visit to the colony, Chi Chapter members demonstrated one Theta Tau principle: brotherhood. Its location is sure to make the new colony a favorite destination for other road-tripping chapters. The Colorado Colony



*College of Engineering Building with the Flatirons in the background.*

*PHOTO BY J. MARTIN NATVIG, UNIVERSITY OF COLORADO, BOULDER*

is looking forward to becoming a contributing part of the Theta Tau family.

# COMMUTING ACROSS CULTURES

by Bruce Lavash

Third in a series of articles by Theta Tau members living and working abroad.

"In Germany, **everything** is forbidden, unless it is expressly permitted. In England, **everything** is permitted, unless it is expressly forbidden. In Italy, **everything** is permitted, **especially** if it is forbidden."

By splitting my time between Germany and Italy, I live 2/3 of this little insight into European diversity almost every week. My family and I live about 15 miles north of Frankfurt, Germany, in Bad Homburg. I work in Procter & Gamble's European paper and disposables business located in the nearby town of Schwalbach. However, I also travel three days a week to the Adriatic coast of Italy, almost directly across the boot from Rome in the town of Pescara.

It is a quite a combination of locations: cosmopolitan Frankfurt, where foreigners and English language are common . . . to the more relaxed, Mediterranean, small town Pescara, where one must learn Italian to get by. On one side, one experiences the precise, orderly Germans, and on the other, the vivacious Italians who seem to take pleasure in flouting the rules. All one has to do to see the difference is to look at how Germans park their cars in orderly rows and how Italians park by pulling their cars headfirst onto the sidewalk.

Following college, I worked at P&G in Cincinnati, mostly in development of paper and disposable (e.g., Pampers) products. Over the years, I have turned into one of those madcap inventors who thrives on creating the future (you know the type). About six months ago, I moved out of Ohio for the first time to take on my current responsibilities. I do upstream product development for our global disposables business, and work to train our young European organization.

With my organization in two locations and frequent travel, 90s technology has become an essential ally. By electronic mail, I communicate with colleagues in Europe and three other continents/time zones. I carry a laptop computer between locations so I can have the sum total of my knowledge with me at all times. For instance, I worked on this

article in my Italian hotel room and while in flight back to Germany, and submitted it to *The Gear* over the internet. Email also helps keep in touch with family and friends back home. As most of my relatives are on-line, we use electronic mail to communicate almost daily.

However, microchip technology still adapts itself to the local culture. Last week I walked through the Rome airport following a gentleman who was walking and talking on a cellular phone . . . and actively gesturing with his free hand using true Italian style and energy.



Like the microchip, we, too, must adjust our style to succeed in our overseas location. Getting a better understanding of local approaches and customs leads to greater success in interactions. As mentioned above, I have found great differences in working in my two environments, Germany and Italy.

I think real insight into the German psyche can be found in the garbage calendar that the city of Bad Homburg issues every year. In it is a complete and precise schedule of the pick-ups in every location of garbage and each different recyclable (yard waste, paper, plastic, glass - sorted by color of course!). In the back of this calendar, is an index listing every possible thing you might consider disposing, followed by the proper receptacle for the waste.

Italian spirit is summed up for me by Severino who runs a restaurant called La Lumaca (The Snail) in Pescara. Upon entering, you are greeted warmly by Severino and often hugged if you happen to be female. Severino selects for you from his extensive wine collection and proceeds to explain his choice to you. As courses

and other wines are slowly served, Severino chats with you, demands feedback on his wine choices, and takes special pains to attend to newcomers. On one of my early visits, Severino told me to close my eyes, taste a sweet dessert wine and describe what I imagined. Since the wine had a vague peach flavor, it reminded me of Georgia, and I described an antebellum Southern mansion on a hot summer day. Severino responded, "In the wine, there is poetry."

Besides understanding local culture, trying to learn the language is also an asset in international locations. Even if you don't do it well, others really appreciate the attempt and your recognition that you're in their country. I was fortunate enough to have studied German and been an exchange student some years ago. I am now struggling with Italian lessons. Italian has been helpful at work, but I think its greatest value came when checking out of my hotel one time last summer and finding that my laundry wasn't ready.

All this is to say that, while our technical backgrounds/skills and our U.S.-based experience are prerequisites, they're not all that's needed to get the job done in the international environment. An appreciation of the local people and work styles is critical to success, also.

I highly recommend an international assignment should one receive the opportunity. It has been a fantastic learning experience for me and my family. Not only have my children traveled to places most Americans never have seen, but their perspective on the world has been broadened. The experience far outweighs the downsides like having to follow a complicated calendar just to dispose of your trash!

## About the author:

**Bruce Lavash**, Sigma '77, a native of Cincinnati, Ohio, was initiated in 1975. He received his BSME in 1977, and his MSME from Ohio State in 1978. Since then he has been with Procter & Gamble, mostly in the development of paper and disposable products. He is presently a Research Fellow in P&G's European Paper Products Development organization. Bruce is married and has three children.



# 1995 NATIONAL CONFERENCE

The National Conference with the theme "Gateway to Brotherhood" was held in the St. Louis suburb (and St. Louis County seat) of Clayton. The Holiday Inn Clayton Plaza was the headquarters, but bus tours were provided to points of interest in the metropolitan area: the Gateway Arch, the St. Louis Science Center, and the Theta Tau Central Office; and the Cookout on Friday was in beautiful Shaw Park nearby.

Over 170 were in attendance as the Conference presented sessions on various aspects of chapter operation: rushing, pledging, meeting planning and execution, teamwork, and philanthropy.



*Council Member Nick Croce (white shirt, right of center) involves attendees in his Teamwork presentation.*

At the Opening Dinner, the Conference was welcomed by a representative of the City of Clayton, the 1995 Laureates were inducted into the Alumni Hall of Fame (see pages 2&3), those named Outstanding Student Members by their chapters were recognized, and each chapter was presented with its copy of the 90<sup>th</sup> Anniversary Directory. A total of eight members from five chapters (a national meeting record) were initiated during the Ceremony on Saturday. Members reported deceased during the past year were memorialized in Sunday morning's Service.

The Conference Banquet Address was given by Hall of Fame Laureate **Henry W. Coil, Jr.**, E '54 (see page 9). The plaque symbolizing the induction of **Winfield S. (Buck) Morris**, P '24, was presented to his wife **Thelma** who gave a touching response. Top in-

dividual student member honors went to **Philip Sigler**, KB '95, named the Fraternity's Outstanding Student Member, and to **Derek L. Diget**, IIB '98, chosen by his peers as the Outstanding Delegate (see page 1).

Receiving Conference awards were **X**, Member-Miles; **NB**, first, and **Y**, second, for Best Display; and **O**, Best Presentation. Best Delegation Award (in each Region) went to **YB** (Atlantic), **O** (Central), **EB** (Great Lakes), **AB** (Southern), and **Y** (Western).

Awards for achievement during the past year went to **O** for Best Newsletter with **P** a close second; **KB** for Best Photograph; and to **O**, **EB**, **KB**, **Y**, and **NB** for scoring 700 or more points in the Chapter Performance competition during the previous school year. Certificates for increasing chapter size by at least 20% were presented to **A**, **Y**, **IB**, **EB**, **ΦB**, and **ΩB**. Honored for maintaining a student membership greater than 40 were **O**, **KB**, and **YB**. Chapter Games winner was **O** with **Y** being named Most Spirited.



*The Florida Colony was impressive with its professionally prepared display from the University of Florida*

At the Banquet, Grand Regent Bettinger announced that the Conference had approved the petition from the **Northwestern University Colony** to become a chapter (see story on page 5).



*Henry Coil (left) receives his plaque from Past Grand Regent Randy Scheetz, also a Hall of Fame Laureate.*

## ALL IN THE FAMILY

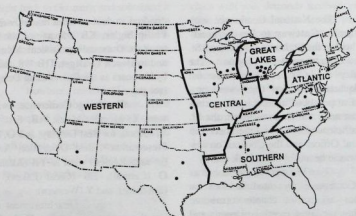
Since the Initiation Ceremony at the Conference, Xi Beta has as student members **Mark** (pictured left) and **Mike Wells** who have taken brotherhood to the extreme by being part of



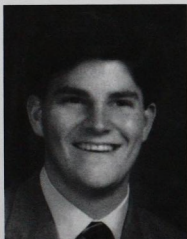
the Theta Tau brotherhood and also natural siblings. **Mark** (A.K.A. Rooster) is graduating in mechanical engineering knowing Mike will continue the lasting traditions we have in Xi Beta. **Mike** (A.K.A. Peacock), just initiated, is a freshman mechanical engineer who is proud to contribute toward the strong bond of fraternal fellowship as his brother has over the years. The Wells brothers are sharing one year of being student members together.

Also initiated was **Brad Swick**, EB '98, son of **Terry L. Swick**, EB '69. The Fraternity is always pleased when additional members of a family become brothers in Theta Tau.

The Regional Director is a national officer appointed by the Executive Council with the important duties of coordinating Regional Conferences, and advising, assisting, and visiting chapters and promoting extension in his region as outlined in the Theta Tau Bylaws. The position (then called Regional Representative) was inaugurated in 1958. Over the years, 58 members have served the Fraternity in this position. Regions' names and boundaries have been modified over the years. They are currently as shown on the map.



**Michael Livingston**, Gamma Beta '92, has been Atlantic Regional Director since 1992. He is also President of the National Capital Alumni



Club, and was elected to the Executive Council as Grand Inner Guard in 1994. Since 1990, he has been employed by the Naval Research Laboratory in Washington designing new radar systems. He was profiled in the Spring 1995 GEAR, page 10.

**Janice L. Wiitala**, Omicron '90, was initiated in 1988 and represented her Chapter at the National Convention in St. Louis the same year. "I was amazed by how many I met and had an instant bond with simply because they were also members of Theta Tau," Janice said, "I have grown so much both

personally and professionally due to my involvement." Janice was Inner Guard and Vice Regent of her chapter and held numerous chair positions as well. She has been involved on a national level since 1990, serving as Professional Development Director, Alumni Program Director, and now as Regional Director.



Her experience with Theta Tau, as well as her experience as a Quality Engineer, Quality Manager, and Senior Industrial Engineer has led to her current position as an Internal Consultant with The Healthcare Financial Management Association (HFMA), a not-for-profit membership organization in Westchester, Illinois. Janice is a member of Chicago Society of Association Executives and American Society for Quality Control. She is also active with The North-

western University Community Chorus, The DePaul University Community Chorus, Volleyball Chicago, and The Chicago Sport and Social Club.



**Anthony Gambel**, Mu '80, has served as Southern Regional Director since 1993. Initiated in 1974, he held the offices of Pledge Trainer, Vice-Regent, and Regent in Mu Chapter. In April 1995, he was honored with the William K. Rey Outstanding Theta Tau Alumni Award by Mu Chapter, an award he holds dear since Brother Rey was his freshman advisor at The University of Alabama and also nominated him for the position of Regional Director.

Anthony has BS degrees in Aerospace and Mechanical Engineering and has done post-graduate work in Industrial Engineering as well. He is em-

played as TQM Engineer at Mercedes-Benz U.S. International in Tuscaloosa.

He has most recently served as Chairman of the Quality Council of The West Alabama Chamber of Commerce and as the first President of the Tuscaloosa Sub-Section of The American Society of Quality Control.

Anthony and Johnnie have been married seventeen years and reside in Tuscaloosa with their two Siamese cats. Their hobbies include flying and Alabama basketball, a good mix for traveling around the U.S. An instrument rated pilot, he has over 1100 hours pilot time and only one crash to show for it. Anthony and Johnnie were ESPN National College Basketball Fans of the Year in 1993. Anthony notes that, "We have a lifetime record of 201-139 against schools with Theta Tau Chapters."



**Justin G. Wiseman, Xi Beta '95**, was initiated into Theta Tau during his freshman year at Lawrence Technological University. Soon afterward, he was elected Scribe, and four months later was elected Regent, a position he held for two years.

In 1992, Justin became Detroit Division Director, and in 1994 he was appointed to serve as Great Lakes Regional Director. He was honored as Theta Tau's Outstanding Student Member for 1993. Justin's greatest experience in Theta Tau came when he, along with former Regional Director Matt DeLoe, revitalized Iota Beta Chapter. Justin serves as president of its housing board and as Chapter Adviser.

At LTU, he was IFC President, Treasurer of Student Government, Co-

Founder of the College Young Republicans, and a member of Sigma Phi Epsilon social fraternity. Justin is active as a community volunteer in the Big Brother program and Paint the Town Community Improvement Committee. He also works with the local housing department and dabbles in local politics.

Justin has a BSME from Lawrence Technological University. Currently he is pursuing his Masters of Industrial Operation from LTU. Justin is a product development engineer with Chrysler Corporation in the Emissions & Fuel Economy Certification Testing Group.



**Richard "Trey" Wiley, Zeta '93**, has been involved with Theta Tau since his mother **Lynn Wiley, Zeta '82**, was initiated. Trey has been active as a member since his initiation in the spring of 1989. While a student member, he served as Scribe, Corresponding Secretary, Marshal, Vice-Regent, and Regent.

Since serving as his chapter's Alternate to the 1990 Convention, he has been enthusiastic about participating with the Fraternity on a national level.

He was Zeta's Delegate at the next two national meetings. In 1992, he was appointed Assistant Western Regional Director. Since 1994 he has served as Western Regional Director.

Trey received his architectural engineering degree from the University of Kansas in 1993. He is employed as an engineer with Bibb and Associates, Engineers, in Kansas City. He and his wife Alycia reside in Overland Park, Kansas.

## WORDS OF WISDOM

The following points were excerpted from the Theta Tau 1995 National Conference Banquet Address of Hall of Fame Laureate **Henry W. Coil, Jr.**, Epsilon '54:

It is important to develop a balanced life including family, profession, politics, humanitarianism, community, and personal interests. Employers seek applicants with experience and leadership qualifications. Young engineers should follow these guidelines:

- Focus on hard results rather than intangibles with morals, strong ethics, trust, and loyalty as personal characteristics.
- Stay focused and set your sights above the grim routine of the day-to-day grind.
- Avoid negative sources, persons, places, things, and habits.
- Avoid those who try to discourage you. Keep trying. Make it happen.
- Believe in yourself.
- Always consider matters from every angle and do what is fair, honest, and just.
- Don't give in or give up on a problem. There is a solution.
- Quitters never win, and winners never quit.
- Never lie, cheat, or steal. Always deal fairly and strike fair deals.
- Understand yourself in order to understand others better. Take control of your own destiny.
- Don't procrastinate.
- Read, study, and learn about everything important in your life.
- Be willing to take risks, but do so sensibly and with understanding.
- Open your eyes and see things as they really are.
- You are unique. In all God's creation, nothing can replace you.
- Zero in on your target and go for it!

The resulting of following these principles may be seen in the fact that Brother Coil's firm is recognized for its professional performance and loyalty to its clients.

Student and alumnus members of **Omicron** Chapter volunteered countless hours for the Iowa City Hospice Road Races. Nearly 6,000 took to the streets in the Half Mile Fun Run, Mile Fun Run, 5k Run, 10k Run, Half-Marathon, Wheelchair One-Mile, Wheelchair 5k and Wheelchair 10k events of the 19<sup>th</sup> Annual Parsons Technology Iowa City Hospice Road Races. The objective was to meet a goal of \$165,000 for United Way agencies of Johnson County. This has become the second largest race in Iowa and the largest fundraising road race in the country.

Many runners and volunteers took advantage of the 7<sup>th</sup> Annual Spaghetti Dinner the night before. Then the entire chapter showed up at 6 a.m. to set up for the Fifth Annual Theta Tau Brunch Blast which after their races provided runners with food and beverages donated by local businesses. Left over food was given to the Domestic Violence Intervention Program shelter for battered women.

**Rho** Chapter has had another event-packed year of fun and development, concentrating on academics, brotherhood, fundraising, athletics, and community service. The chapter had the highest GPA of any fraternity at North Carolina State University. Members cleaned one of the local parks, held a car wash to raise money for operating costs, and purchased filing cabinets for storing academic reference materials. A new committee to procure a better Theta Tau chapter house was established. One aspiration of the chapter is to become the most improved fraternity in intramurals with brothers competing in nearly every sport. In doing so, the chapter expects to make its presence known in athletics as well as academics. Rho Chapter road-tripped to Mu chapter for Alabama's Homecoming against North Carolina State University.

Last Spring was highlighted for **Upsilon** Chapter by its Formal celebrating the chapter's anniversary with Executive Director Robert E. Pope as guest. Grand Scribe Michael T. Abraham also visited just before its largest initiation in years.

Summer found many members going their separate ways for internships and summer work, but 14 reunited to make the trip to the National Conference.

In late September, Upsilon hosted the Fall 1995 Western Regional Conference. Unique at this Conference was the debut of the Professional Development Competition, in which representatives from each chapter were invited to give a presentation on a technical subject. Upsilon's own Jody Ayers won the competition with a report on pressure relief valves. All hope this competition becomes a regular event.

Founders' Day this year was also a big success, held again on Homecoming Day with a roasted pig for the many alumni attending. The chapter has also been involved in community service, cleaning, and landscape work at a local public park.

**Gamma Beta** is surging into the future with an energy and vigor that will certainly yield outstanding results! A prime goal was Gamma Beta's Third Annual Fourth of July "Bash on the Mall." What better place to celebrate our great land than in the nation's capital! Brothers from across the country are invited each year.

A project in the works is further development of an engineering "Recruitment and Retention" program. Gamma Beta has contacted each applicant accepted by the School of Engineering and Applied Science and has run class advising at Colonial Inauguration during the summer.

On the fundraising front, the chapter is exploring the sponsorship of parties at local establishments in exchange for a percentage of the profits. Check out our Web Site <http://www.seas.gwu.edu/student/thetatau>.

This has been an extremely busy year for **Kappa Beta** Chapter. It included the 8<sup>th</sup> Annual Pig Pickin' Alumni Cookout, and its first Movie Night Under the Stars Party, both successes. The chapter held a reception to honor Philip D. Sigler, KB '95, who was selected as the Fraternity's Outstanding Student Member.

Although the chapter had successes, it was not without losses. Dr. George Rodney Lightsey, charter member, chapter Advisor, and Theta Tau Alumni Hall of Fame Laureate passed away on September 15, 1995. Each member's thoughts and prayers are with Dr. Lightsey's family. He was a valued brother and dear friend.

The chapter is looking forward to the Southern Regional Conference, and a joint formal with other nearby chapters.

This school year has definitely been a better one for **Lambda Beta** Chapter. A major house project was the renovation of the chapter office. Now pictures and other mementos are proudly displayed while chapter files and ritualistic items are behind doors.

Rushing success came from email lists! Instead of just sending flyers to the mail boxes of all engineering freshmen, the chapter also compiled and used an email list of all freshmen. During one week, each was sent two flyers and two email messages. This idea came from necessity. It was the third week of the semester with no pledges. Members felt like giving up, but knew they had to persevere. After using the email as "free" advertisement, there were multiple responses. The chapter has plans to put a web page on Tennessee Tech's server so anyone wanting to read about Theta Tau can do so.

This year there were major fund raising accomplishments. The chapter affiliated with Excel, a long distance phone company and now sells long distance phone service to customers. This has great potential for the chapter. Brothers work at Opryland theme park for a day. This usually earns somewhere around \$400 per trip. Annually, it has been the best fund-raiser.

Each brother contributes fully, and much has been accomplished this past year. The chapter hopes to grow considerably in the next few years.

**Nu Beta** Chapter whitewashes the university's "M" each fall. This rock symbol measuring 241 x 214



feet on a hill just outside Platteville is lighted for Homecoming and for M-Ball in the spring. From the top of the hill, Iowa and Illinois can be seen.

Once again Nu Beta Chapter will be publishing *The Geode*, an engineering magazine distributed to keep alumni informed about the College. Nu Beta held its third annual Alumni Appreciation Weekend in conjunction with Homecoming. After the game, alumni came to the house for chili and warm beverages. Community involvement includes a "Big Buddy Christmas Party" for the children of Grant County and Bingo games at Parkview Terrace.



The Nu Beta Housing Corporation has purchased a home for the chapter located at 440 West Adams Street, Platteville. Listed in the National Register of Historic Places, the house was built in 1870 by Jonathan H. Evans, sutler to the 33<sup>rd</sup> Wisconsin Volunteer Infantry, prominent citizen, public servant, and banker.

The house sits near the crest of a gently sloping hillside on a one-acre lot studded with trees. It is the earliest known Platteville home to be designed in the Queen Anne style with Italianate influences. It consists of two intersecting gables with a broad front porch whose roof is supported by thin Tuscan columns. There is also a small west-facing side porch. The original floor plan and much of the original interior trim have been preserved, including the maple banister on the front stairway and second floor balcony. Hardwood floors are found throughout. The first floor includes the front hallway and stairs, living room, drawing room with fireplace, dining room, small kitchen, full bath, and two rooms added later at the back.

The second floor has two large bedrooms, large kitchen, and large full bath. Of special interest are a stained glass panel in the front hall, the ornamental cast iron dining room fireplace with mirror and oak mantle, and a full basement. The members are proud to be able to renovate and enjoy this beautiful and historic home.

At **Xi Beta** Chapter, the brotherhood is stronger than ever. It is now in its new on-campus office. The chapter averages three professional development tours a month with 90% participation. Thanks to the brilliant investing strategies of the alumni, it is closer than ever to getting a house. Southfield Mayor Don Fracassi supported the chapter in changing the city ordinances regarding fraternity houses. He was quoted at a city meeting, "I would like to see a respectable and responsible organization such as Theta Tau reside in Southfield." Jerseys have arrived for the first ever Theta Tau Xi Beta ice hockey team. After a tough winter of pickup games, we're ready for a summer league.

**Pi Beta** Chapter has chosen Dr. Bob White, Professor of Industrial and Manufacturing Engineering, to receive its second annual Outstanding Faculty Award at Western Michigan University. Selection is made by the chapter's graduating seniors and is presented to recognize outstanding faculty who present engineering concepts clearly, provide extraordinary assistance, motivate students to excel, and teach with enthusiasm.

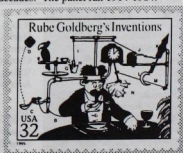
**Delta Gamma** Chapter has been very busy with rushing activities, with twenty-nine rushees attending our events including Malibu Grand Prix Race Car night, tubing down the Salt River, and a tour of an Allied Signal manufacturing plant. Seventeen were offered bids to pledge.

The chapter instituted a new alcohol policy to increase the safety of social events. All members relinquish their keys to a non-drinking driver team

that drives any intoxicated brother and his car home. The chapter has started a Housing Promissory Note system, requiring members to pay a sum into the housing fund after graduation. Fall activities included: a tour of Luke Air Force Base, working concessions for the Phoenix Cardinals' games, several trips to our nearest neighbor Chi Chapter, and an intramural volleyball team. Among spring projects were a book sale, a speaker from Hewlett Packard, and the organization of Engineering Day for the College. With a lot of fun and games, Engineering Day brings an opportunity to get to know fellow engineers. As Delta Gamma reaches its first anniversary, it continues to grow tremendously in strength and brotherhood.

## POSTAL SERVICE HONORS GOLDBERG

On October 1, 1995, the United States Postal Service issued a sheet of 32-cent commemorative stamps featuring "Comic Strip Classics." One of these honored Rube Goldberg's *Inventions*. It also issued a 20-cent postal card with this drawing on the picture side and on the imprinted stamp. On the back of the stamp, and the card, the text read: "Rube Goldberg (1883-1970) was a cartoonist with an engineering degree. This combination led him to create a series of crazy inventions — in this case an automatic napkin — that amused readers for decades. The panel ran 1914-1964."



© Rube Goldberg, Inc.  
© United States Postal Service 1995

## ALPHA

Robert F. Barthelmy, '34, 5/5/95  
Ray Earl Kullberg, '31, 1/13/96  
Leon Artemis Mears, '30, 12/20/95  
Harold Theodore Pearson, '27, 4/28  
Richard Ecard Schuett, '34, 12/6/95  
Alf T. E. Swanson, '44, 10/4/95

## BETA

Richard Wilson Brotherton, '40  
Chandler Loring Bush, '31, 8/17/95  
Colin William A. Campbell, '42, 19/95  
Robert John Dorr, '43  
Charles Warren Hawn, '34, 7/20/95  
Philip Longacre Johnson, '39  
James Allen Keeley, '40, 9/14/95  
John Edward Keeley, '43, 9/14/95  
Frank C. Lord, '31, 3/29/95  
Francis Reo Sanborn, '42, 5/29/96  
Donald Louis Schaible, '60, 12/11/94  
Ray Ernest Stefani, '58  
Ward Edwin Tuttle, Hon. '82  
Robert Whitman VanEvera, '41  
John Elmer Wertzler, '43  
Robert John Wieder, '36  
Robert Van Orden Williams, '38

## GAMMA

George H. Adams, '36, 6/6/95  
James Richard Leonard, '42, 4/5/95  
Richard Franklin Moe, '43, 3/15/95  
John H. Ross, '34  
Charles N. Strong, '58, 12/21/91

## DELTA

Robert Otto Armer, '32, 4/17/87  
Teleforte Joseph Filipksi, '50, 3/1/95  
Joseph Richard Girlando, '57  
Gordon Nelson Gray, '31, 10/95  
Stanley Angus Morash, '46, 9/90  
William Card Nusbaum, '44, 12/7/92  
Harry White Smith, Jr., '30, 11/30/94

## EPSILON

Robert William Fields, '49, 8/23/95  
Peter Warren Gester, '43, 4/2/91  
George Lewis Guthrie, '31, 12/23/92  
John Edward Kilkenny, '35  
Joseph Le Conte, '30, 12/25/92  
Roy James M. Nielsen, '40, 12/0/91  
Edward Cannon Simpson, '21  
Conrad Ward Thomas, '36, 1951  
Victor August Zullo, '57, 7/16/93

## ZETA

Thomas E. Arbuckle, Jr., '41, 3/22/93  
Waldo G. Bowman, '33, 6/6/96  
Clifford George Davis, '26, 2/13/95  
Marshall Albert Guy, '31, 5/19/78  
Clarence Thomas Hammond, '41  
S. Stanley Learned, Jr., '24, 10/21/95  
George A. Rendleman, '34, 2/16/95  
Robert L. Smith, Hon. '47, 12/9/95  
Clair Lee Sommers, '48, 1995

## ETA

Hermann Steffan D. Botzow, '30  
Theodore Adam Riehl, '30, 2/27/95  
Edwin D. Ryer, '20, 3/95

## THETA

Lionel Silvan Baldin, '26, 7/8/95  
Andrew Checkovich, '38, 2/9/94  
Charles Herbert Grover, '29, 6/95

## IOTA

Marion L. Atkinson, Jr., '25, 12/10/95  
Otto Theodore Bentrup, '60, 4/3/95  
Roy Henderson Boyd, '45, 12/31/94  
Charles Eugene Christian, '53  
Thomas Howard Green, '29, 2/2/95  
Oliver William Kamper, '35, 7/27/95  
James Wilbur Ranes, '47, 8/12/95  
John Theodore Sturm, Jr., '32  
Robert F. Summers, '44, 3/21/95  
Edgar John Thorlston, '49, 8/28/95  
Myron Ford Thomas, '30, 4/6/95

## KAPPA

Robert Fred Christensen, '35, 4/7/94  
James F. Fitzgerald, '35, 10/8/95  
Edward Carl Heubach, '39  
William LaRue Lindsay, '28  
Harold Fleming Smith, '29, 5/24/95

## LAMBDA

Ray Jones Bowen, '35, 7/11/95  
George Blair Bradshaw, '39, 12/5/95  
George C. Earl, '44  
Howard Martin Hurst, '34, 6/30/95  
Charles David Martin, '50  
Harry Dodge Moulton, '44  
Sherman Ross Oblad, '45  
Edward James Watts, '36, 6/24/95

## MU

Edmund Rucker Agee, '60, 3/25/95  
Thomas Taylor Allington, '33, 6/95  
Charles P. Almon, Jr., '28, 5/30/95  
Philip Meyer Davis, '30, 1/10/93  
James R. Maxwell, II, '28, 5/14/95  
Howard Hinds McCarl, Jr., '71  
William Hugh Mixon, '65, 1994  
Roger A. Newman, '70, 2/19/95  
Raymond Loren Shultz, '51, 5/15/95  
Claude C. Shotts, '22 (Charter)  
William C. Stapleton, '49, 10/16/95  
Antonio Rafael Torres, '45, 1994

## NU

James Eugene Hovis, '44  
Donald Campbell Jones, '25  
Miles Albert Kinley, '32, 3/27/95  
Francis. Kredel, '23, 9/3/95  
Harry Read Kridler, '33, 12/95  
Wendell Lafayette Minor, '48  
Harry Newton Smith, '25

## XI

Harold Milton Lampert, '54, 9/21/95

## OMICRON

Clyde Edward Hartzell, '48, 2/17/96  
Luvern William Kehe, '31, 7/28/95  
Edward C. Larsen, '44, 9/18/95  
William Dean Swanson, '28  
Carlton Hulet Vernon, '32  
Frank William Wells, '31

## PI

Howard B. Edwards, '35, 8/16/89  
Holmes D. Harper, '34, 8/27/95  
William Reese Smith, '66  
Vincent William Starke, '35

## RHO

Fred Bayard Crowsen, '30  
William Lynch Davis, '52, 4/12/96  
George Harris, '60  
Joseph Martin Lee, Jr., '49, 10/3/95  
William Holt Moore, '50, 5/12/92  
Myron Earl Rion, '34, 6/17/92  
William Colonel Roe, '48, 8/21/95  
William F. Sledge, '34, 10/23/95  
Marvin Kenneth Sloan, '58, 12/27/94  
Samuel Robert Watson, Jr., '36  
John Morrison Yandle, '62

## SIGMA

Charles Calvin Griffith, '35, 12/10/94  
Leroy Van Hedges, '49, 1983  
George Wilson Moyer, '32, 10/16/94  
Morris R. Smith, '24

## TAU

Earle W. Barrett, Jr., '51, 12/17/94  
Donald Newell Bridgwater, '40  
Arthur Henry Heidged, '45  
Harold Ellsworth Nares, '45, 4/5/95  
Parry W. Owens, '35, 7/8/95  
William John Robinson, '37, 9/1/92  
Ambrose Edward Smith, '51, 3/2/95

## UPSILON

Wilbur Walter Adcock, Jr., '42  
Lewis Charles Barry, '40, 10/1/95  
William H. Mapes, Jr., '36, 11/21/94  
Kenneth Wade Rippey, '51, 11/18/94  
Joseph Walter Smith, '47, 4/26/95

## PHI

Herman Edward Antle, '32, 4/22/95  
Lyndon. Davenport, '31, 5/27/95  
Charter  
Arthur Ellis Fillingim, '30, 1/6/96  
Philip Ross Jordan, '41, 12/19/95  
Leonard D. Parsons, Jr., '36, 7/16/95  
Brook Irven Smith, '26  
Robert John Wentz, '41, 5/26/95

## CHI

Robert Arthur Beam, '55  
Richard Bennett, '27  
Floyd Ivory Blumh, '42, 9/22/95  
Robert Eugene Brown, '48  
Carl Frank Bruce, '32  
Robert Bruce Clelland, '48  
William Kendrick Cloud, '33  
Thomas Charles Conroy, '37  
Gardner David Currie, '42  
Arthur Davis, '34  
Arthur Evans Dixon, '38  
Don C. Farver, '31  
Delmar William Fisher, '32  
William Everett Franck, '50  
Waldo D. Freeman, '36  
Alvin Friedsam, '47  
Arthur Richard Garrett, '40  
Joseph Archie Hales, '49  
Claude Carlyle Hampshire, '26  
Leonard Ward Hedgecock, '42  
Howard Fletcher Hersey, '56  
Richard Charles Heyser, '53  
Joseph Wesley Holden, '55  
Wayne Marble Holden, '52  
Denman Keith Holmes, '47  
Neal Doyle Houghton, Jr., '38  
Daniel Rea Howe, '47  
John McGill Johnson, '41  
Reinhardt Lovdell Johnson, Jr., '58  
A. Maxwell Jones, Jr., '43  
William Hayes Keener, '40  
James Everett Kimes, Jr., '62  
Tom Clarence King, '43  
Alexander Knight, '42  
William Fraser Knight, '38, 5/8/90  
Charles Joseph Lamothe, '37  
Harland Richard Lane, '35  
Bronson Coe Lansing, '51  
Harry Malvern Lindsey, Jr., '35  
Frank Burr Losee, '32  
DeWitt Clinton MacKallor, Jr., '52  
Robert George Masching, '48  
Robert Muir McGeorge, '44  
James Douglas McLean, '39  
Howard Willoughby Miller, Jr., '59  
Lee Kessler Morrison, '41  
Philip Blaine Newlin, '46, 10/20/95  
Ellis Giles Nielson, '48  
Richard Powell Obert, '45  
James Bernard Payne, '67  
Arthur Adolph Pearson, '37  
Emil Sheridan Pearson, '32  
Gines Perez, '32  
John Finley Pfeiffer, Jr., '49  
Thornton Phillips, '36  
Collins Martin Powell, '35  
Morton E. Pratt, Jr., '42  
Henry S. Raymond, '37  
John Douglas Rittenhouse, '38  
Elgin Elmer Sanders, '32  
Harold E. Spires, '38  
Gerald Lyle Stephens, '55  
Victor Douglas Stevens, '39  
(Continued on page 13)



## ALUMNI ORGANIZATIONS

The alumni organizations listed are those that responded with information on contact persons for publication in this issue.

### Detroit Alumni Association

Ed Van Elslander, 3423 Pall Drive, Warren, MI 48092-1948,  
Phone: 810/751-1749

### Greater Tennessee Alumni Club

Michael L. Brown, 1909 Light Tower Circle,  
Hixson, TN 37343-3185, Phone: 423/842-2043  
E-mail: mlbrown@aol.com

### Midwest Alumni Association

Paul Taylor, 530 North Dubuque Street, #3,  
Iowa City, Iowa 52245-6240, Phone: 319/341-0328  
E-mail: pctaylor@icaen.uiowa.edu

### National Capital Alumni Club

Michael Livingston, 2154 Newport Place, NW,  
Washington, DC 20037, Phone: 202/296-8389  
E-mail: living@wizard.nrl.navy.mil

### Metropolitan New York Alumni Club

Theo Novak, 21 Marions Lane, Northport, NY 11768,  
Phone: 516/757-4750

### Southwestern Alumni Club

Kathleen Scruggs, 8530 North 22<sup>nd</sup> Avenue, #2081,  
Phoenix, AZ 85021, Phone: 602/678-5722  
E-mail: scruggs@ix.netcom.com

### Twin City Alumni Association

Randy Mikolaj, P. O. Box 14932,  
Minneapolis, MN 55414-4932, Phone: 612/331-7931

---

## AVAILABLE FOR EMPLOYMENT

As a service to members seeking employment or a change in employment, this space is provided on a complimentary basis. Please contact the Central Office for listing in the next issue of *The Gear of Theta Tau*.

**Collaboration Sought.** Have compelling but obscure evidence of previously unsuspected astrobale cluster located in mountainous region of U.S. Main blème c. two miles across. Evidence points to non explosive impact cause, indicating very large object. Suggests scenario for end of ice age and extinction of woolly mammoth, etc. Desire collaboration with party/ies having credentials for obtaining grant or private funding for investigation, etc. Respond to S96A, Theta Tau Central Office, 655 Craig Road, Suite 128, St. Louis, MO 63141-7168.

**Mechanical Engineer,** EIT certified, seeking employment. Career objective: To obtain a challenging engineering position in which I may utilize my mechanical design and computer

application skills. Overall Goal: Eventually to obtain a design position with a major automotive company. Respond to S96B, Theta Tau Central Office, 655 Craig Road, Suite 128, St. Louis, MO 63141-7168.

**Mining Engineer.** Twenty-one years experience underground coal and related surface facilities. 17 years production, 7 of those as mine superintendent, 4 years engineering. Location: open. Prefer production. Will consider engineering. Respond to S96C, Theta Tau Central Office, 655 Craig Road, Suite 128, St. Louis, MO 63141-7168.

**Research Position.** Recent PhD in Engineering Physics (Plasma Physics), University of Wisconsin - Madison. I have experience with several diagnostics, data analysis, computer modeling, and programming in several languages (C++, IDL, and Fortran). Please write to Dana Edgell, Xi '85, 1018 Mound Street, Madison, WI 53715, or email edgell@uwmf.eeep.wisc.edu

---

## Theta Tau

Professional Engineering Fraternity  
655 Craig Road, Suite 128  
St. Louis, MO 63141-7168

If the addressee has moved or is deceased, please return to **Theta Tau** this portion of the cover showing new address or date of death. Thank you.

NONPROFIT ORG.

U.S. POSTAGE

PAID

JEFFERSON CITY, MO  
PERMIT NO. 210

Forward & Address Correction