

The GEAR of Theta Tau

Volume LXXV, No. 1

Fall, 1993



Welcome to the new Central Office!



EXECUTIVE COUNCIL

GRAND REGENT

Dean W. Bettinger, T '81 H: (315) 469-8764
421 North Monticello Drive B: (315) 443-1070
Syracuse, NY 13205-2352 Fax: (315) 443-4745

GRAND VICE-REGENT

Brad D. Besmer, Ω '86 H: (719) 528-5469
6870 Riverwood Lane B: (719) 591-4500
Colorado Spr., CO 80918-6307 Fax: (719) 531-0227

GRAND SCRIBE

Robert E. Pope, Z '52 B: (314) 994-1904
655 Craig Road, Suite 128 H: (314) 872-3234
St. Louis, MO 63141-7168 Fax: (314) 997-3234

GRAND TREASURER

Arthur M. Partin, T '84 H: (215) 525-2899
9 Braxton Road B: (302) 454-1405
Rosemont, PA 19010-1028

GRAND MARSHAL

Lee C. Haas, P '62 H: (919) 851-6952
812 Mervin Road B: (919) 543-4933
Raleigh, NC 27606-2645

GRAND INNER GUARD

Mark R. Janssen, Ω '88 H: (612) 784-4203
9756 Magnolia Street, NW
Coon Rapids, MN 55433-5431

GRAND OUTER GUARD

Michael T. Abraham, EB '92 B: (314) 994-1904
655 Craig Road, Suite 128 H: (314) 872-3234
St. Louis, MO 63141-7168 Fax: (314) 997-3234

STUDENT MEMBER

William A. Safieh, X '94 H: (602) 881-2674
1030 North Martin #1104
Tucson, AZ 85719-4946

DELEGATE-AT-LARGE

Randall J. Scheetz, O '79 H: (319) 984-5350
102 Wood Smoke Road B: (319) 292-7192
Rural Route 1 Fax: (319) 292-7487
Denver, IA 50622-9714

BOARD OF EDITORS, *The Gear of Theta Tau*

Lawrence El-Hindi, T '87, Co-Editor-in-Chief
219 Robert Drive H: (315) 472-4054
Syracuse, NY 13210-3225 Fax: (315) 682-8825
Randall J. Scheetz, O '79, Co-Editor-in-Chief
Sean P. Donnelly, T '88 (315) 472-4054
Lance LeTeller, Ω '89 (605) 787-6164
Glenn Wilcox, Ω '90 (319) 277-3652

THETA TAU CENTRAL OFFICE

655 Craig Road, Suite 128 (314) 994-1904
St. Louis, MO 63141-7168 (800) 264-1904
Fax: (314) 997-3234

Internet: Central@ThetaTau.org

Robert E. Pope, Z '52, Executive Director
Michael T. Abraham, EB '92, Assistant Exec. Director

Contents

Features

Conference and Convention Highlights	2
Rube Goldberg Machine Contest	4
Extension Update	7
Alumni Hall of Fame Laureates	10

Departments

Theta Tau News	1
Chapter News	5
Alumni News	8
New Initiates	14
In Memoriam	16

Cover Photo: The 655 Office Building in Creve Coeur Executive Office Park, the new location of the Theta Tau Central Office.

Credits

Michael T. Abraham, EB '92
Dean W. Bettinger, T '81
Matthew D. Dougherty, Φ '94
Stephen D. Ebert, Φ '94
Robert E. Pope, Z '52
Kurt A. Selzle, Ω '86
Arthur E. Stephenson, ΦB '91
Aaron Tersteeg, S.U. Colony '94
Scott Wurms, Hofstra Colony
St. Louis Business Journal



Executive Director Robert E. Pope, Z '52, at work in Theta Tau's new Central Office.

The Gear of Theta Tau is the official publication of Theta Tau National Engineering Fraternity and is published in the fall and spring. The magazine is an educational journal devoted to matters of fraternity interest and is sent at no cost to alumni whose addresses are on record. Send change of address to Theta Tau Central Office, 655 Craig Road, Suite 128, St. Louis, MO 63141-7132. Special third class postage has been paid at Syracuse, New York.



Theta Tau News



NEW LOCATION FOR CENTRAL OFFICE

Since November, 1991 the Theta Tau Central Office has been located at its new headquarters in the Creve Coeur Executive Office Park, occupying Suite 128 in the 655 Office Building which takes its name from the address, 655 Craig Road.

As a historical note, the Central Office has always been located in this St. Louis suburb. For the first twenty years, the office was in the home of the Executive Secretary (now Executive Director) Robert E. Pope, Z '52. In 1983, it moved to leased space in the Theta Xi National Headquarters building and remained there until the move to its present home. Helping accomplish the move were Grand Regent Dean W. Bettinger, T '81, Grand Outer Guard and Assistant Executive Director Michael T. Abraham, EB '92, Gary McNeil, Y '91, Robert Sacks, Z '87, Howard G. Palmer, Z '41, and Kurt Selzle, Ω '86.

The building is accessible to those with disabilities and the suite, encompassing approximately 900 square feet, provides adequate work space for the support staff, a full-time and a half-time secretary, as well as individual offices for the Executive Director and Assistant Executive Director. The pentagonal and trapezoidal shapes of



The Central Office maintains a library of books authored or edited by Theta Tau alumni.

preparation and duplication of many forms and publications. Importantly, there is storage space for records and supplies, and for the more than 100 forms, publications, promotional and gift items stocked for shipment.

Bob Pope and Michael Abraham are eager to welcome members living or travelling in the St. Louis area to Theta Tau's new Central Office.

STAFF ADDITION

Michael T. Abraham, EB '92, became Assistant Executive Director in June, 1992. At 25, he had already amassed a wealth of Theta Tau experience. He served his chapter as Professional Development Chairman, Rush Chairman, Pledge Instructor, Treasurer, Scribe, Vice-Regent, and Regent. He has attended every national meeting beginning in 1986 when he was named the Convention's Outstanding Delegate. He was Eastern Regional Director in 1989. Since 1990, he has served on the Executive Council, first as Student Member, and currently as Grand Outer Guard. While a chemical engineering student at Wayne State, Michael also became a member of Phi Eta Sigma honor society, AIChE, and the Engineering Society of Detroit.

First employed by Theta Tau as Ad-

ministrative Assistant in 1988, he returned to the staff briefly at a critical time in 1989, and helped as a volunteer with the relocation of the Central Office to its present location in November, 1991. Before assuming his current permanent position on the Fraternity's staff last year, he was employed as technical field representative for Castrol Industrial Great Lakes.

Vitaly interested in the growth of the Fraternity, Michael was instrumental in the organization of the local fraternities that were the origins of Tau Beta, Chi Beta, and Psi Beta Chapters, and two others which are expected to become colonies later this year.

The Central Office has been able to improve and expand its services as the result of Michael's efforts which have earned high praise from Executive Director Pope.



Assistant Executive Director Michael T. Abraham, EB '92.

THETA TAU INFORMATION SYSTEM

The Theta Tau Information System (OTIS) is an e-mail (electronic mail) system designed to provide information about Theta Tau to students and alumnus members. OTIS is available to all members who have access to Internet mail. It is in the final stages of development by Grand Vice-Regent Brad Besmer, Ω '86. Any member who would like more information on OTIS should send an e-mail message to otis@thetatau.org or contact Brad at brad@thetatau.org.



Sue Hoffman has recently returned to the Central Office staff after a few years' absence.

their offices make each essentially a corner office. A number of the decorations in the offices, including the large Greek letter logo created by Vernon C. Rohde, II, T '86, displayed in the reception area, were gifts to the Fraternity. The conference area can accommodate meetings of the Executive Council. The communications center provides connection for messages sent by fax or electronic mail, and includes a toll-free voice telephone line.

Membership records are continually updated and computer printouts and labels are provided upon request. The laser printer and copier make for practical in-house



'91 Conference & '92 Convention

1991 CONFERENCE NEWS

With the theme, *Building An Era*, the 1991 National Conference was held at the Holiday Inn - Fairlane Area Conference Center in Detroit, August 15-18. Emphasis at this Conference was on workshops, presentations, and activities designed to strengthen fraternal spirit and improve the Fraternity's operations as it builds toward the next century.

Conference Host was the **Detroit Division** (Epsilon Beta, Iota Beta, Xi Beta, Omicron Beta, and Phi Beta Chapters, and the Detroit Alumni Association) with **Michael T. Abraham**, EB '92, as Chairman.

Named by his peers as the Outstanding Delegate of the Conference was **Carl E. Sickles**, EB '93.

The **Outstanding Student Member** award was instituted with members being honored by their chapters for service to the Fraternity during the previous calendar year, and one of these being named Theta Tau's national Outstanding Student Member. Each Chapter honoree is presented a certificate and award dangle to be worn on his badge's guard chain. A special certificate and jeweled dangle are presented to the Fraternity's Outstanding Student Member. The first recipient of the national award was **Steven Freedman**, P '92. Since graduating, Steve is an officer in the Rho of Theta Tau Housing Corporation, and has been appointed the Fraternity's Chapter Fund Raising Chairman.

1992 NATIONAL CONVENTION Summary of Events

The St. Louis Airport Hilton provided an excellent setting for the 1992 Theta Tau National Convention, August 20-23. The Host Committee from **Omega Chapter** arrived early to organize and make the national meeting run smoothly. Chairman of the Host Committee, **Tim Hammers**, Ω '93, served as Temporary Chairman of the Convention.

After the ritualistic opening, the Grand Regent and the Executive Director presented their reports, and the Delegates gave brief oral reports of their chapters' progress. At the Opening Dinner, **Ronald E. Halbach**, P.E., Capital Improvements Engineer, St. Louis County Department of Highways and Traffic, welcomed the Convention on behalf of St. Louis County, and presented the Proclamation issued by County Executive **George R. "Buzz" Westfall**, designating that day as Theta Tau Day in St. Louis County. Each one named Outstanding Student Member of his chapter for the previous year was honored, and the Host Committee was introduced, and Chapter Advisers were recognized.

After extended discussion, Constitution amendments proposed at the first legislative session were adopted (one after amendment) and then were made immediately effective through unanimous vote of the Convention. These reduced restrictions on those eligible for election to certain

Council positions. The Grand Regent and Grand Vice-Regent no longer need to have served on the Council, but only as a national officer. The Grand Inner Guard and Grand Outer Guard are now restricted to two consecutive terms whereas previously neither was permitted to succeed himself. The result of this action had no discernable effect on the elections later in the Convention.

The Convention theme, *Living Our Ideals*, was introduced at the Second Session, and there was discussion which focused on risk management policies at the chapter level.

Membership services were discussed. After discussion which saw the Convention examine in detail the 1992-1994 Budget adopted at the 1991 Conference, it was adopted again with few modifications. **Maria Everding**, etiquette consultant, spoke on Manners for Success, which elicited many questions from those attending. After the traditional Regional Lunches, the Rube Goldberg Machine Contest, and Membership Recruitment were the topics for discussion before the short walk to the park in the suburb of Woodson Terrace, where the Airport Hilton is located, for a superb cookout prepared by the Host Committee, followed by Chapter Games and visits to the functional and attractive Theta Tau Central Office relocated to a more adequate space this year.

Saturday morning, presentations on Pledge Education and Chapter Excellence preceded the Initiation Ceremony conducted by experienced student members who were neither Delegates nor Alternates with **Nicholas Knoepfle**, Σ '93, as Regent. A new record of eleven were initiated into Theta Tau through six chapters at this well presented ceremony. After an open luncheon, two sets of five concurrent seminars were held in which were presented very briefly various aspects of fraternity operation. With all nominations coming from the floor, followed by discussion of the many nominees, the elections of most council members were held (see article page 3). The election of the Student Member of the Executive Council was deferred until Sunday morning when the Grand Chapter Memorial Service was held followed by the final legislative session. Following presentation by Merger Committee Chairman, **Randall J. Scheetz**, O '79, the Convention expressed opposition to any name change even if "Theta Tau" were retained as the first two of three Greek letters. After consideration of resolutions, the new Executive Council was installed.



Delegates and Alternates to the 1992 National Convention prepare for their next session.

1993 CONFERENCE

The 1993 National Conference is being held at Ross Camp just outside West Lafayette, Indiana, August 19-22, with **Phi Chapter** as host.

As at previous Conferences, the schedule has been formulated to provide the opportunity for the personal and professional development of our members. The A-frame lodge of the Camp should prove to be an ideal environment to fulfill this purpose.

Events to be held on the Purdue campus include a visit to the chapter house and the Awards Banquet at the Memorial Union. Phi Chapter has hosted previous Conventions in 1952 and 1974.

Executive Council Chosen for 1992-1994 Biennium

At the 1992 National Convention, elections were held for the Executive Council of the national Fraternity. Chosen to serve for this biennium were:

Dean W. Bettinger, T '81
Grand Regent

Brad D. Besmer, Ω '86
Grand Vice-Regent

Robert E. Pope, Z '52
Grand Scribe

Arthur M. Partin, T '84
Grand Treasurer

Lee C. Haas, P '62
Grand Marshal

Mark R. Janssen, Ω '88
Grand Inner Guard

Michael T. Abraham, EB '92
Grand Outer Guard

William A. Safieh, X '94
Student Member

Randall J. Scheetz, O '79
Delegate-at-Large

Profiles of the new members elected to the Council (Haas and Safieh) appear below. Those reelected were profiled in the Fall, 1991 issue of *The Gear*.

Lee C. Haas, P '62, was elected Grand Marshal at the 1992 National Convention. While on academic sabbatical from IBM to pursue a Ph.D. in Electrical Engineering at North Carolina State, Lee learned of Theta Tau in the fall of 1985. He pledged Rho Chapter and was initiated at age 45. The next year, he served as Corresponding Secretary, and subsequently as Chapter Adviser, and as Regional Director of the Southern and Atlantic Regions. As President of Rho of Theta Tau Housing Corporation, he is working with other alumni to develop resources to purchase a chapter house.

Lee is a Senior Engineer in IBM Network Systems at Research Triangle Park, NC. A registered Professional Engineer, his

BSEE degree is from Virginia Polytechnic Institute and State University, and his MSEE from San Jose State College. Joining IBM in 1967, Lee has worked in circuit design, signal processing, data communications, and modem product development. He has six patents issued, and eighteen invention disclosures published in the field of telecommunications. His current work is in product development for Local Area Networks, optical fiber systems, and related standards of ANSI, EIA/TIA, and IEEE.



Lee C. Haas

Lee is an avid racquetball player and snow skier. He has enjoyed travelling a fair bit and, with his wife Brenda and two daughters, living and working in France for nearly three years beginning in 1976. His daughter, Cindy, married Rick (Flounder) Tatem, P '92, on Valentine's Day this year. Lee's state license plate reads "THETA-TAU."

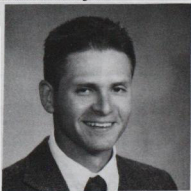
William A. (Bill) Safieh, X '94, who served as Delegate from his chapter at the 1992 Convention, was elected Student Member of the Executive Council. An

electrical engineering major, Bill is a member of Eta Kappa Nu honor society. Since his initiation in August, 1990, Bill has given Theta Tau much of his time and effort, being heavily involved in the development of his chapter's alumni and scholarship programs. He has presented workshops on teamwork for the pledge classes, and leadership for newly elected officers. In his chapter, he has earned the appellation "The Man Who Cares."

Since becoming a member of the Executive Council, he established the Theta Tau Forum providing an e-mail medium for discussion of topics of interest to the Fraternity. He also originated the extension effort at Arizona State University. The petition from the local there has been approved by the Executive Council and its certification as a colony is expected this fall.

A member of ROTC, Bill is President of the Society of American Military Engineers, and belongs to the Association for Unmanned Vehicular Systems (AUVS) and to the Armed Forces Communications Electronics Association (AFCEA).

Now 26, Bill served in the U.S. Army (1985-87) and then the Reserves until June, 1991. For the last four years, he has been employed by the Department of Defense as an Initiation/ Test Engineer.



William A. Safieh



Alumni Hall of Fame laureates at the 1992 National Convention awards banquet.



Rube Goldberg Machine Contest

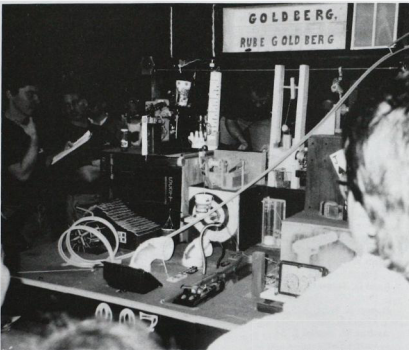
The Rube Goldberg Machine Contest at Purdue University has gained more publicity both at the national and local levels. **Phi Chapter** has continued to put forth an organized and complete event since it pushed the contest into the national spotlight.

The Purdue and national contests are held in the Elliott Hall of Music on the Purdue University campus. Teams of imaginative engineers demonstrate their skills, patience and cleverness as they set these complicated machines in motion, accomplishing a simple task. 1992 was the 10th year Phi Chapter has sponsored the event which has become a national Fraternity project.

For those who are unfamiliar with the contest, it is named after the late cartoonist Rube Goldberg (1883-1970). Educated as a mining engineer, Goldberg became famous illustrating imaginary machines which used incredibly complex series of steps (sometimes including people and animals) to perform simple tasks.

The machine building contest, which originally started as a local competition between the Theta Tau and Triangle chapters on the Purdue campus, was revived in 1983 after 28 years by brothers of Phi Chapter. Since then the contest has gained in prestige and has involved participation of other design teams at universities across the country. According to the national contest rules, competing teams must be from a university where a chapter of Theta Tau is located.

The 1992 national contest, under the direction of Chairman **Matthew D. Dougherty**, Φ '93, included five teams with participants from Lawrence Technological University, University of Arkansas, University of Wisconsin - Milwaukee, University of Texas - Austin and Purdue University. The task was to unlock a lock; the winning entry was the machine designed by **Sigma Beta Chapter** representing the University of Wisconsin - Milwaukee. The contest's success is not only attributed to the determined efforts by the



This Rube Goldberg Machine, designed to unlock a lock, shows the complexity of a typical design and hints at the creativity involved.

members of Phi Chapter but also the corporate sponsors including the Ball Corporation, Ball Aerospace Systems Group, and Thomson Consumer Electronics. Also supporting the contests were the Schools of Engineering and Technology at Purdue University, WKHY Radio & Copy Cat.

Televised coverage of the 1992 contest included spots on *ABC World News Tonight*, *CBS This Morning*, and the show *Beyond 2000* on the Discovery Channel. In recent years the contest has seen publicity on *Late Night with David Letterman*, *The Tonight Show*, *Newton's Apple* and *Dick Clark Presents*. The basic rules of the contest are:

It is open to any team of students enrolled at a university where an active Theta Tau chapter or colony exists.

The machine must perform the assigned task in at least 20 steps, and without any human intervention.

The machine entries are judged on the basis of 100 points maximum for successful completion of task, number of steps in the process, creativity, complexity, and Rube Goldberg spirit.

The 1993 design task was to screw in a light bulb. That contest, chaired by **Erik Burns**, Φ '95, was won by the **Theta Tau Colony** representing **Hofstra University**.

Information packets regarding upcoming contests are mailed to all Theta Tau chapters and colonies. For more information on the 1994 contest, contact the NRGMC Chairman **Craig A. Shroyer**, Φ '95, at Phi Chapter of Theta Tau.

THE BEST JUST GOT BETTER !!!

If you have a Theta Tau Classic Visa, you already know what a great card it is to have. But what you may not know is that now it's even better!

The Annual Percentage Rate has just been **lowered to 15.4%**. The first year's **annual fee is waived**, and now the annual fee will be waived in future years if your average monthly account balance is at least \$500.

In addition to these improvements, there is still a 25-day interest free grace period; and you can avoid paying any finance charges by paying your balance in full each month. You also get the **Premier Club Travel Benefits** (including accident insurance and auto rental discounts) at no extra charge.

Most importantly, the First Tennessee Bank makes a contribution to our Fraternity every time you use the Theta Tau Classic Visa Card. These contributions help us to maintain the services that we provide our members. Best of all, these contributions are made at no additional cost to you! All you need to do is **make the Theta Tau Classic Visa your first choice** when making purchases.

Won't you take the opportunity now to apply for this card? **Simply call 1-800/669-7474, extension 031, for an application.**

Chapter News



Plastic Extrusion Design Contest

Two **Sigma Chapter** student members shared the Prime Plastics Award for New Extruded Product Design co-sponsored by Theta Tau and Prime Plastics of Clinton, Ohio. Prime Plastics President **Robert L. Miller**, O '41, presented \$500 checks to **Edward Vinarcik**, Σ '93, designer of a plate glass molded attachment, and **Brett Steen**, Σ '93, for a telecommunications wire distribution system.

Contest judges were William C. Douce, Zeta '41, of Phillips Petroleum, J. Robert Dean, Upsilon '83, of Dow Chemical and Dr. John Glass, Nu '45, of the University of Akron Polymer Center.

The contest was conceived by Brother Miller in an effort to stimulate creative thinking, particularly in the field of plastics science. Brother Miller himself has been a contributor to development in the plastics industry. He has authored various articles and course materials on extrusion and corrugation techniques. He was inducted into the Alumni Hall of Fame in 1990.

Award Recipients

During the Awards Dinner at the 1992 National Convention at the St. Louis Airport Hilton, several chapters were recog-

nized for their achievements by the national Fraternity. **Mu Chapter** won the Best Newsletter Contest, with **Omega** in second place. The Best Photograph award went to **Gamma Beta Chapter**. The Chapter



Student representatives and Past Grand Regents William K. Rey (now deceased) and A. Thomas Brown, all of Mu Chapter, with Schrader Award.

Play Your Best Card!

If you aren't using your Theta Tau Visa Classic, you're not playing your best card. Every time you make a purchase, First Tennessee Bank makes a contribution to the Fraternity at no cost to you.

If that isn't enough to make you reach for the Theta Tau Visa Classic, remember these great features:



- ♣ No annual fee!*
 - ♦ Low Annual Percentage Rate!**
 - ♥ Interest-free grace period on purchases.
 - ♠ Exceptional travel benefits at no extra charge.
- If you're already holding the Theta Tau Card...play it. If not, call 1-800-669-7474, ext. 031 for an application.

This program is currently available only to permanent residents of the United States.

* Fee Waived Year One. No annual fee thereafter when your average monthly account balance is only \$500 or more.

**Annual Percentage Rate may vary. Current APR 15.4% as of 7/4/93. Minimum monthly finance charge \$.50 (in any month a finance charge is assessed).

Games trophy went to the combined team of **Kappa Beta** and **Xi Beta** Chapters, with **Sigma** second, and **Omega** third. The Chapter Games Spirit trophy was won by **Sigma** Chapter. The Member-Miles award went to **Omega** Chapter, hosting the Convention with 14 members present. Winning the Best Display award was **Gamma Beta** Chapter, with **Upsilon Beta** second. **Phi** Chapter won the Best Presentation Award. Best Delegation Award (in each Region) went to **Upsilon Beta** (Atlantic), **Phi** (Central), **Sigma** (Great Lakes), **Lambda Beta** (Southern), and **Omega** (Western). Certificates for increasing chapter size by 20 percent were presented to **Rho**, **Sigma** and **Upsilon Beta** Chapters. Chapters honored for maintaining a student membership greater than 40 members were **Mu**, **Omicron**, **Phi**, **Chi**, **Rho Beta** and **Psi Beta**. Named Outstanding Student Member during 1991 was **Kevin D. Groot**, TB '93. Named Outstanding Delegate by her peers was **Tracy A. White**, TB '93, daughter of **Loyal C. White**, HB '63. The Founders' Award for most improved chapter was won by **Zeta**. The Erich J. Schrader Award for best chapter went to **Mu**. Receiving certificates for scoring 700 or more points in this competition during 1991-92 were **Omicron Beta**, **Mu**, **Xi Beta**, **Omicron**, and **Kappa Beta** Chapters.

Alpha Chapter Helps Build A World

On May 4, 1993, 10,000 children came to the University of Minnesota to build a globe one-millionth of the actual size of our earth. This globe measured over 40 feet tall and consisted of over 2000 panels. Each panel was hand painted by school children during the winter. Everything was put together in one mad eight hour rush.

Alpha Chapter was one of the largest student organizations volunteering. Brothers were in charge of informing and entertaining children as they waited in line to attach their piece of the earth to the framework.

Alpha Chapter thanks its volunteers. Most of them skipped lunch and stayed the full eight hours while the globe was being assembled. They are **Carl Brown**, **Jon Dignan**, **Troy Erickson**, **Greg Herrera**, **Kent Kolstad**, **Dave Ruhland**, **Bruce Tanquist** and **Neil Van Esp**.

—From The Garnet, Alpha Chapter Newsletter.

Omicron Chapter Sponsors Design Contest

From down the hall, one could smell bubble gum. What's going on? The annual Theta Tau Engineering Design Contest was

being held to celebrate National Engineers' Week. What needed to be done to win? The contestants had to build a structure similar to the St. Louis Arch using bubble gum and toothpicks. Sounds easy? Guess again. Contestants walked away with sore jaws and dazed looks on their faces. They all worked diligently trying to span the space between two desks without their structure collapsing. Some used engineering principles, some used materials science knowledge (the more gum and toothpicks, the better), others let engineering fly out the window and did anything to make it work. The frustration is shown by the quote in the Daily Iowan from active **Margo Melendez**, O '94, "We probably won't get it built all the way across. We're not really using engineering principles. Obviously I haven't learned anything in my four years here."

The winners of the contest and the \$25 first place prize went to two alums, **Jeff Smith**, O '92 and **Don Lapp**, O '92. Their arch was the only one to truly span the distance between desks. It was an amazing feat coming in at seven inches tall. Second place went to **Noel Culbertson** and **Trent Riggs**. Third place and the remaining bubble gum went to **Melendez** and active **John Cummings**, O '92.

In all, almost 1,200 pieces of bubble gum and 3,200 toothpicks were used by the soon-to-be engineers. It was quite a sight to see.

—Marc Schlebusch, Omicron News

DETROIT AREA CHAPTER NEWS

Tour of Chrysler Tech Center

On Friday October 30, 1992, representatives from **Xi Beta**, **Omicron Beta** and **Phi Beta** Chapters were treated to a tour of the new Chrysler Tech Center in Auburn Hills, Michigan. The group of about twenty members was given an hour-long guided tour of the facility. The Chrysler Tech Center is unique in its design of a car from start to finish. This helps to speed up the production of new vehicles. The Tech Center promotes the idea of "team concept," meaning the designers, engineers, and other related personnel work together.

The Tech Center is pioneering rethinking in the entire process of car design. And when a car design is completed, it can even be produced at the Tech Center. Producing 40 to 50 prototype vehicles permits the engineer to work out many problems that might arise when the car goes into actual production. This allows ample time to make design changes, or to refine the as-

sembly process to help produce higher quality vehicles.

The Tech Center is unique in other areas as well. It operates as a small community with its own drug store, barbershop, medical facility, gymnasium, four cafeterias, and power plant. The Tech Center currently encompasses 3.3 million square feet, with an additional 4.7 million square feet of space allotted for construction. A special thanks is extended to Brother **Vic Bolterstein**, EB '74, for organizing this event.

Detroit Division Founders' Day Formal

Theta Tau actives and alumni who live in the Detroit area gather together to celebrate Founders' Day in grand style. Last year the dinner was held at the Bonnie Brook Country Club on Detroit's west side.

Over 180 persons attended the function, which brought brothers together in the grandest event of the year.

Among those in attendance were Brothers **George Kostopoulos**, EB '88, past Great Lakes Regional Director, **Matt DeLoge**, OB '92, current Great Lakes Regional Director, and **Justin Wiseman**, EB '94, Detroit Division Coordinator.

A special thanks to Brother **Ed Van Elslander**, EB '61, for rallying over thirty alumni from Epsilon Beta Chapter to attend, several of whom were charter members of that chapter.

If you were unable to attend previous years' dinners, plan to attend next time; for it promises to be an even grander event.

Painting the Town

Approximately 8,000 volunteers descended on Northwest Detroit's Bethune Community on Saturday August 15, 1992, to paint and fix up over 225 homes that are owned by low income, disabled, or elderly residents.

Theta Tau volunteers from **Xi Beta** and **Omicron Beta** Chapters arrived early Saturday morning to paint two adjacent homes on Ardmore Street. By noon, the team was asked to take on the job of painting a third home across the street. The dedication and team spirit of the Brothers was demonstrated when they agreed to paint the third home.

During the 6 o'clock news, a local television station featured a live broadcast of the Theta Tau Team, with the help of volunteers from Standard Federal, First of America, and First National Banks as they finished up the third home.

The hard working "hammer and tongs" spirit of the Theta Tau volunteers showed the enthusiasm that can come from working together to help people in need.

Extension Update



Syracuse University Colony

The **Theta Tau Colony at Syracuse University** has picked up momentum in its goal to reestablish Tau Chapter of Theta Tau since its certification on November 9, 1991. Recently, the colony initiated 12 new members and now boasts a membership of 25 students. The colony is expected to petition Theta Tau at this summer's Conference to be reinstalled as a chapter with all privileges of full membership.

The colony has been active in demonstrating its ability to function as a chapter. Last November, the colony sent 14 members to the Atlantic Regional Conference at The George Washington University in Washington, D.C. The colony actually had the strongest showing with both initiated members and pledges. The Conference provided the opportunity for colony members and pledges to learn from chapter members and Advisers.

The colony has organized several events to develop camaraderie among the members as well as maintaining their link with the traditions of Theta Tau Fraternity. The colony celebrated Founders' Day with a dinner at Sauro's restaurant in Solvay. Tau Chapter alumni Dean Bettinger, T '81, Grand Regent, and Matt Stace, T '85, Colony Adviser, attended as well. Prior to Founders' Day, the colony also went on a camping trip at Carpenter's Falls near Skaneateles Lake. Both members and pledges alike felt that the trip was an original way for everyone to become better acquainted.



The founding members of the Syracuse University Colony with their first pledge class at the Colony Certification.

Hofstra Colony a Winner

The **Hofstra University Colony** was certified on May 2, 1992, with Grand Regent **Dean W. Bettinger** presiding at the ceremonies in Hempstead, New York, on Long Island. Twenty-two members of the local Tri Chi became the first members of the colony. **Adria Santiago**, who organized the local fraternity, and **Theo Novak**, first Colony President, accepted the certificate at the Banquet which followed. Three members of the colony attended the 1992 Convention.

Entering its first National Rube Goldberg Machine Contest, the Hofstra team led by **Christopher Ashline** and

Christopher Gerard demonstrated its machine having its theme based on the 1970's television show "The Addams Family." Against intense competition, the Hofstra team won, taking home \$500, a color television, and a five-foot trophy.

This achievement brought the colony and Hofstra University international media coverage and recognition, including a scheduled appearance on *The Tonight Show* with Jay Leno, *CNN Headline News*, and *CBS Up to the Minute* (see article, page 4).

Go West Young Man!

The Executive Council has just approved the petition from a local engineering fraternity, **Theta Tau Delta**, at **Arizona State University**. This local was formed on January 30, 1993, by visiting Theta Tau national officers with extensive help from the student members of Chi Chapter.

ASU, which traces its roots to 1885, is located in Tempe (greater Phoenix). It has become the fourth largest public university in the country with 44,000 students, ten undergraduate colleges, and nearly 700 acres of land. The College of Engineering Sciences was established in 1957; the engineering school of this college now offers undergraduate degrees in eight curricula.

The local will be certified on October 23. It currently has sixteen student members with growth anticipated with this fall's local. **John E. Q. Hughes**, President, and **Kazuaki Itaya**, Treasurer, are expected to represent the local at the 1993 National Conference in West Lafayette, Indiana.



Hofstra Colony members at their Certification ceremony.



ALPHA

Charles W. Britz, A '33, Past Grand Regent and Hall of Fame Laureate, has recently been named to the coveted rank of ASCE Honorary Member. Hailing from St. Paul, Minnesota, he was cited by ASCE News "for his regional contributions to the profession as a pioneer in geotechnical engineering, and for his exemplary lifelong commitment to civic and educational service to his community. He pioneered geotechnical engineering in the north central region of the United States through his founding and development of the Twin City Testing and Engineering Laboratory." An avid tennis player since high school, Brother Britz was also recently inducted into the Minnesota Tennis Hall of Fame.

John Bohle, A '92, received his CE degree and is now employed as Highway Technician with Minnesota DOT in St. Paul.

BETA

Chris Heer, B '82, has moved to South Carolina in the "Low Country" where he works for a contractor which is one of many involved in the building of a 500 mega-watt coal-fired power plant expansion.

Scott Shellenbarger, B '89, is an Engineer with Kiewit Western in Elk Grove, Illinois.

DELTA

Harry E. Figgie, Δ '48, has recently published his book, *Bankruptcy 1995: The Coming Collapse of America and How to Stop It*, which was a best seller. Fortune magazine applauds Figgie's attempt "to issue a wake-up call about the evils of America's endless federal budget deficits and the humongous debt they have engendered." Brother Figgie is Chairman and CEO of Figgie International.

Laurie Jane Kern, Δ '79, graduated last December from General Motors Institute with a masters degree in Manufacturing Management. She and her husband recently travelled to England for vacation.

ZETA

Charles "Cub" Baer, Z '41, and his wife Mary were cited for their pledge of scholarship money to benefit Kansas University students majoring in architecture. This pledge will establish the Edward W. Tanner Scholarship Fund, in honor of Mary Baer's late father, who, in 1916, was KU's first architectural engineering

student.

Paul Endacott, Z '23, was awarded Kansas University's Distinguished Engineering Service Award in 1991. Brother Endacott's accomplishments on KU's basketball courts are surpassed only by his outstanding work in the petroleum industry and by his many contributions to the University. He was President of Phillips Petroleum Company, now retired.

Col. Joe Engle, USAF (ret), Z '55, was inducted last fall into the Kansas Aviation Hall of Fame. Joe was backup lunar module pilot for the Apollo 14 mission in 1966 and commanded the space shuttle Discovery during its mission in 1985 to rescue a stranded communications satellite worth \$85 million. He lives in Houston, Texas.

John S. McNown, Z '36, was awarded Kansas University's Distinguished Engineering Service Award in 1988. Brother McNown, a member of the KU Civil Engineering faculty for twenty-nine years, is known for his technical contributions in fluid mechanics and for his leadership in engineering education in Africa. Dr. McNown is Professor Emeritus and former Dean of the KU School of Engineering.

Paul Pankratz, Z '55, and his wife Phyllis were recently recognized for their generous financial contributions to Kansas University to benefit its Department of Chemical and Petroleum Engineering. Paul joined Dow Chemical in Midland, Michigan, two years after receiving his BSChE. By 1979, he became general manager of Dow's Western Division in Pittsburg, California, and then returned to

Michigan to become vice president and director of operations for Dow. He managed and directed more than 20 U.S. production sites, operated by more than 17,000 people. Recently retired from Dow, he is now president, chief executive officer and chairman of Magma Power Co., a producer of electric power from geothermal resources.

Lt. Brian Reid, Z '91, married Amy Jo Womack on September 5. They live in Bellevue, Nebraska. Brian is a former Staff Associate for Theta Tau Fraternity.

Milton D. Sills, Z '55, was honored with the Distinguished Engineering Service Award from the University of Kansas where he had earned the degree BSME. Brother Sills, a pioneer in business jet aircraft, made the first test flight of the original aircraft, and made invaluable contributions to subsequent Cessna Citation aircraft, particularly in the areas of aerodynamics and flight characteristics. The Citation fleet has become the largest, safest and most successful jet fleet in the world. Brother Sills joined Cessna Aircraft Company in 1965 as an experimental test pilot, was named Chief Engineer in 1984, and promoted to Vice-President of Product Engineering in 1988. Brother Sills and his wife Betty live in Augusta, near Wichita, Kansas. They are active in church and community affairs. They have five daughters and sixteen grandchildren.

Richard E. Werp, Z '79, is a principal engineer at Boeing Company working on the Space Station Freedom program, living in Madison, Alabama. He has patented a



A number of Tau Chapter Alumni were present for the Syracuse University Colony Certification, November 9, 1991.

new design in Airborne Early Warning Radar.

THETA

Henry R. Janiesch, Θ '57, has been named VP of the F-14 Program at Grumman Aerospace and Electronics, and lives in Smithtown, New York.

J. Kelly Johnson, Θ '23, a retired consultant, at age 90, is enjoying his summers in Vermont and his winters in Liverpool, England.

MU

Christine L. Boykin, M '92, received her BS degree and is now a Graduate Student at The University of Alabama at Tuscaloosa.

Ernest Foster, M '93, received his BSEE degree and is now employed as a Junior Engineer with Alabama Power in Birmingham.

Ruth Erin Rabalais, M '93, received her BS degree and is now in Baton Rouge as a Development Engineer with Dow North America, Louisiana Division.

David L. St. John, M '93 received his BSEE degree and is now a Design Engineer with St. John Engineers, Inc. in Troy, Alabama.

OMICRON

Wilfred George, PhD, O '50, is now Vice President Investments, Portfolio Manager with Prudential Securities in San Francisco.

Jeannette A. Thielen, O '92, received her BSE degree and is Biomedical Engineer Trainee with V.A. Medical Center in Washington, DC, living in Alexandria, Virginia.

Doug Moeller, O '93, received a BS

degree and is a Project Engineer with John Deere Foundry in Waterloo, Iowa.

RHO

Marcus B. Crotts, P '53, of Winston-Salem, NC, is one of two recipients from the southeastern United States of the Rotary International 1992 Service Above Self Award, Rotary's highest honor for Rotarians. Brother Crotts is past President of the Rotary Club of Stratford (Winston-Salem). During 1980-81, he served as Governor of District 7690, which comprises clubs in the Piedmont area of North Carolina. Crotts is a partner in Crotts and Saunders, an engineering firm in Winston-Salem, NC. Brother Crotts also received from North Carolina State University the Watauga Medal which recognizes those who have rendered notable and significant service to the University. Crotts has also served as President of NCSU Alumni Association and for 8 years on the University Board of Trustees.

TAU

Matt Stace, T '85, married Karen Fornalik on April 24, 1993. He is the Syracuse Colony Adviser and a former Theta Tau staff member (national Extension Director, 1984).

PHI

Robert D. Higbie, Φ '93, received his BSME and is now Associate Engineer with Bell Helicopter, Textron, living in Arlington, Texas.

Thomas A. Thrasher, Φ '92, received his BSCEM degree and is now Field Engineer with PCL Civil Constructors, Inc. in Tempe, Arizona, living in Salem, Virginia.

OMEGA

Kurt Selzle, Ω '86, is a mechanical engineer with a mission. When Selzle is not designing energy efficient air conditioning systems at Charles E. Jarell Contracting Co. in Earth City, MO, he is talking zealously about the technology that makes them work.

Selzle is one of the new breed of engineers that has combined the staid, old-world language of his profession with the new languages of ergonomics and environmental engineering. His mission is converting every building he can into an energy efficient, computer-controlled environmental system.

"A lot of buildings are not managed by professional people. They don't realize they are paying twice as much than they need to heat and cool their building," Selzle explained. "They are still using noisy, energy inefficient systems using old technology."

His latest convert is the new home of the American Association of Orthodontists at 401 Lindbergh Blvd. The 12-year-old, three-story building was bedeviled by an air conditioning unit so loud it violated local noise ordinances. When all six compressors in the two 65-ton units kicked on the building seemed to dance.

"The vibrations were so bad, the chandeliers literally would sway," said John T. Terranova, director of finance and administration for AAO. "When a committee was meeting we couldn't close the doors. No one could come in here (a conference room near the second-story air conditioning unit) and spend eight hours in the room. It was almost impossible to use."

An exorcism was definitely in order, Selzle decided when summoned to the building. The mechanically controlled system he encountered was obviously loud, terribly inefficient and expensive to operate, he said.

"The noise complaints were so severe they couldn't use the air conditioning unit at night or on weekends," Selzle added.

Also contributing to the problem was a huge empty atrium that rose from the ground floor to the ceiling in the center of the structure. The atrium, while lovely to look at, channeled the noise throughout the building. To further complicate the problem, a first-floor fountain pumped tons of humidity into the air.

"It was bad engineering," Selzle said. "Design considerations had not taken into account that the system was pushing too much noise through the duct work. Humidity levels in the summer were very high."

To correct the problems Selzle drew up plans that threw out most of the existing



Theta Tau's "Energy Exorcist" Kurt Selzle, Omega '86, in front of one of his recent projects.

Continued on page 12.



Alumni Hall of Fame



James E. Ashton
Omicron '64

In 1991 and 1992, the following distinguished alumni were inducted into the Alumni Hall of Fame. Theta Tau established this honor in 1986 to recognize alumni for service to their profession and/or to Theta Tau. To date, 32 have been so honored.

James E. Ashton, O '64, was honored for service to his profession. As a varsity athlete and class valedictorian, he received his chapter's "Outstanding Senior Award," graduating with the degree BSCE. Later, he was to earn his MS and PhD degrees from MIT, and his MBA from Harvard, and to receive from his first alma mater's Alumni Association its highest accolade, the Distinguished Alumni Award.

Brother Ashton has authored two books, and is now Vice President and General Manager, Naval Systems Division of the FMC Corporation, and President of Ashton and Associates.

Formerly with General Dynamics for 15 years, he directed a team of 8000 personnel plus international subcontractors to produce the F-16 fighter aircraft. He was Vice President of Engineering for the Electric Boat Division until he refused to allow continuance of the waste and mismanagement he discovered in production of its Trident and 688-Class Attack Submarines.

Harvill C. Eaton, AB '70, was honored for service to his profession and to Theta Tau. A charter member of his chapter, he served as its first Regent. He later served the national Fraternity as Grand Outer



Harvill C. Eaton
Lambda Beta '70

Guard and Grand Vice-Regent. He has earned the degrees BS and MS in Engineering Science from Tennessee Technological University, and PhD in Materials Science from Vanderbilt University. He received the Guest Scholar Award from The Swedish Institute, Stockholm, in 1982.

Since 1990, Brother Eaton has been Vice Chancellor for Research and Economic Development at Louisiana State University whose faculty he joined in 1976 as an Assistant Professor of Engineering. He also served LSU as Associate Dean of Engineering (1986-89).

He has served on numerous national boards and committees and as a consultant to the Environmental Protection Agency and National Science Foundation. He is the author of over forty research papers.

Herman H. Hopkins, B '08, was honored posthumously for his service to Theta Tau. A member of the Rhombohedron Club at Michigan College of Mines, he was an alumnus initiate into Beta Chapter.

He was the first Editor of the Fraternity's magazine, its first Grand Scribe (through 1919), and a founder and first President of the Chicago Alumni Association. He served as Grand Regent (1935-37) and as Acting Grand Regent for 27 months during World War II. Regional Meetings were inaugurated during his term as Grand Regent. He participated in the installations of Zeta, Sigma, and Gamma Beta Chapters, and the reinstallation of Xi Chapter. The Thirteenth Biennial Convention was named in his honor. As Past Grand Regent,



Herman H. Hopkins
Beta '08

he remained active in the Fraternity until his death in 1976.

In addition to dedication to Theta Tau Fraternity, he was active with the Professional Interfraternity Conference, now the Professional Fraternity Association. He had been instrumental in helping the Michigan Tech Alumni raise funds for a new Union Building on campus.

Charles Luckman, K '31, was honored for service to his profession. He served as chapter Scribe and Vice-Regent, and graduated magna cum laude from the School of Architecture, University of Illinois. He holds honorary doctorates from



Charles Luckman
Kappa '31

four universities. He is a member of Tau Beta Pi and of the College of Fellows, American Institute of Architects. He became President of Pepsodent Company at 33, and of all American companies of Lever Brothers at 37. He was Founding Partner of the Luckman Partnership in 1950.

Charles Luckman has established a strong reputation in the field of architecture. His firm has won 92 major design awards, with more than six billion dollars in completed projects. He is the only Trustee to have served 22 years on the Board of the California State University System. Named one of Ten Outstanding Young Men in America, he is a four-time winner of Freedom Foundation's George Washington Honor Medal, has been adviser to the last eight US Presidents, and authored the autobiography *Twice in a Lifetime, from Soap to Skyscrapers*.



Roger R. Revelle

Epsilon '29

Roger R. Revelle, E '29, was honored posthumously for service to his profession. A graduate of Pomona College, he received his PhD from the University of California, Berkeley, where he studied under Past Grand Regent George D. Louderback, Epsilon 1896. He was subsequently awarded honorary degrees by 13 universities.

Brother Revelle served in the Navy from 1941 to 1948 to the rank of Commander, USNR. In 1951 became director of the Scripps Institution of Oceanography.

Brother Revelle's studies led him to become an early prophet of global warming. While Director of the Center for Population Studies at Harvard University, 1964-75, one of his students was Albert Gore, now Vice President of the United States. In 1961, he was appointed the first Science Adviser to the Secretary of Interior, and received the Medal of Sitara-i-Imtiaz from Pakistan for greatly improving agricultural productivity in the Indus Valley. He was

founder of the University of California, San Diego, where he was Professor of Science and Public Policy, 1975-90. He was awarded the National Medal of Science in 1991. He was elected to the National Academy of Sciences, and was President of the American Association for the Advancement of Science.

Roger Revelle passed away in 1991 just prior to his induction into the Hall of Fame (for further information see article on page 17).

(GLASHEEN PHOTO, S10/UCSD)



William K. Rey

Mu '45

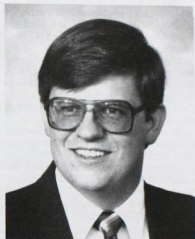
William K. Rey, M '45, was honored for service to his profession and to Theta Tau. He held the degrees BS in Aerospace Engineering and MS in Civil Engineering from The University of Alabama.

Brother Rey had been a strong supporter of Mu Chapter, being its adviser for over 30 years. He also served on Theta Tau's Executive Council for 14 years, including two terms as Grand Regent during which four chapters were installed.

His professional career was at The University of Alabama where he was a Professor of Aeronautical Engineering and a Professor of Aerospace Engineering. Since 1976, he had been Assistant Dean for Undergraduate Programs in Engineering. Listed in numerous biographical references, and the recipient of many awards, he was named Distinguished Engineering Fellow of The University of Alabama in 1986.

Unfortunately, Brother Rey passed away just eight months after his induction into the Hall of Fame (see article, page 16).

Randall J. Scheetz, O '79, was honored for his service to Theta Tau. As a student, he served his chapter as Regent, graduating with the degree BS in Mechanical Engineering. He has recently been admitted to



Randall J. Scheetz

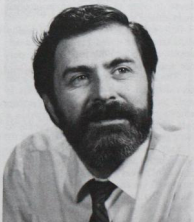
Omicron '79

the Executive MBA Program at the University of Iowa. His professional career has been with John Deere Waterloo Works in Iowa where he is currently Manager, Cab Operations, a focussed factory with about \$120 million in sales.

He has served on the Executive Council since 1982. Under his leadership during two terms as Grand Regent, the Fraternity experienced unprecedented growth with eight chapters installed and thirteen colonies certified. As Delegate-at-Large, he has continued his active participation in convention planning and chapter visitation.

In 1991, he was elected to the Board of Directors of the Professional Fraternity Association which he currently serves as Treasurer.

Charles E. Wales, EB '53, was honored for service to his profession and to Theta Tau. A charter member and Vice-Regent of



Charles E. Wales

Epsilon Beta '53

his chapter, he graduated with the degree BSChE, later earning his MS from the University of Michigan and his PhD from Purdue.

Brother Wales' entire professional career has been as an educational engineer. With Robert A. Stager he developed the teaching-learning strategy described in the book *The Guided Design Approach*, the first of nine books to his credit.

He currently holds joint appointment as Professor of Engineering and Education at West Virginia University where he is also Coordinator of Freshman Engineering and Director of the Center for Guided Design. He served on the Theta Tau Executive Council, 1958-76, including two terms (1968-72) as Grand Regent.

Alumni News

Continued from page 9.

systems and incorporated a combination of state-of-the-art air conditioning hardware and computer-operated and monitored electronic controls.

All of the different systems were then interfaced via hard wire to an in-house computer terminal programmed to both operate and monitor the system.

Problems with air flow, energy use and water circulation are instantly identified and forwarded via modem to another computer at Jarrell headquarters. If a problem develops it can usually be identified and corrected using the information received from the on-site computer, Selzle said.

To underline the real savings involved, Selzle provided a myriad of statistics compiled by the Building Owners and Managers Association. They show that employee productivity, energy costs and employee health-related claims were all reduced dramatically when employers turned to state of the art environmental management systems.

For example, when indoor air quality increased and noise levels decreased, employee productivity increased 21 percent and 26 percent respectively.

"The liability of building owners for not providing quality working conditions is real," Selzle explained. "The new systems eliminate those problems and provide a safe, efficient environment for people to work in."

Kurt A. Selzle received his Mechanical Engineering degree from the South Dakota School of Mines in 1986. While a student, he served his chapter as House Manager, Rush Chairman, Leader for Special Projects, and as Delegate to the 1984 National Convention. He has served the national Fraternity as its Professional Development Director and Grand Outer Guard. Shortly after graduation, Kurt set-

tled in St. Louis, Missouri.

—Adapted from article by Nat Helms,
St. Louis Business Journal

Julius Mark Strid, Ω '80, is employed by Stone & Webster in San Francisco.

James J. Peterson, Ω '92, received his BS degree and is Systems Analyst with Shell Oil Company, in Houston, Texas.

EPSILON BETA

Jerome R. Palardy, EB '93, former Executive Council member, received his degree in computer science. He and his wife, **Louise**, ΦB '88, toured ten European countries in 16 days. Included was Ireland, and a visit with **Mike Palmer**, EB '88, former Regional Director, with whom he had been initiated. Jerry is now a Systems Engineer with Pyramid Solutions, currently working at the site of one of its customers, SP Telecom.

KAPPA BETA

Paul W. Young, KB '83, married Cameron Leigh Polk on December 5, 1992. He is currently Chairman of the Mississippi Section of the A.S.M.E. and Secretary of the Mississippi Section of the Academy of Certified Hazardous Material Managers.

NU BETA

Michael D. Hansing, NB '92, received his BSME degree and is a Mechanical Engineer with Sterling, Inc., in Milwaukee, Wisconsin.

Mark W. Wellman, NB '92, received his ME degree and is now in Technical Sales with Hettinga Equipment, Inc., in Des Moines, Iowa.

OMICRON BETA

Mark Holzhauer, OB '87, is a Strategic Account Sales Engineer for Philips Semiconductors in Englewood, Colorado.



Arthur Stephenson, Phi Beta '91, went job hunting and sightseeing along the Alaskan highway.

RHO BETA

Christopher Hill, PB '91, received BSChE and BBA degrees and is a Waste Characterization Engineer with Labyrinth Group in Dayton, Ohio.

SIGMA BETA

Jeffrey Henn, SB '92, received his BSME degree and is now Technical Sales Engineer with Tri-Clover in Kenosha, Wisconsin.

TAU BETA

Jill Lancaster, TB '92, received her BSCE degree and is System Administrator with Northside ISD in San Antonio, Texas.

Jennifer Lynn Revels, TB '93 received her BSCpE and is now an Engineer with Texas Instruments and lives in Lewisville, Texas.

Lorena Sanchez, TB '93, received her BSME degree and is living in Scottsdale, Arizona.

UPSILON BETA

Gregory Garner Williams, YB '92, received his BSET degree and is employed as CAD Technician with A. L. Rood, Norfolk, Virginia.

PHI BETA

Arthur Stephenson, ΦB '91, sent a postcard to Executive Director Pope, informing Bob of his efforts to start a Theta Tau chapter at the Arctic Circle (just kidding). Brother Stephenson said, "I rode out to Alaska to do a little job hunting. Along the Dempster Highway we saw grizzlies, crossed the McKinsey and Yukon River via ferry, crossed the Arctic Circle, ate moose, slept in igloos and bathed in the Arctic Ocean!" This sounds like an outstanding site for a future Theta Tau National Convention!

Vasil D. Germanski, ΦB '93, received BSEE and MSEE degrees and is an Electrical Engineer with Creative Industries in Auburn Hills, Michigan.

CHI BETA

Andrew Junkins, XB '92, received his BSME degree and is now Mechanical Engineer I with Interbold, in Canton, Ohio.

David G. Ferencik, XB '93, received his BSCE degree and is now Assistant Structural Engineer with Centier Energy Corp. in Cleveland.

PSI BETA

Mark Thompson, ΨB '92, received his BSEE degree and is now Product Engineer with Motorola in Austin, Texas.

EXCLUSIVE 25% SAVINGS

THETA TAU MEMBERS

CAN SAVE UP TO 25% ON LONG DISTANCE CALLING

Members Of Theta Tau Can Pay Less For Long Distance Calls By joining our Members' Long Distance Advantage program, you'll pay up to 25% less. With rates as low as 9.9¢ per minute, no nationally-advertised calling plan has a lower per-minute charge.* And it's exclusively for Theta Tau members!

Save On Long Distance Calls As a member of this program, you can **save up to 25%** on your long distance bill. You'll receive significant savings plus the quality of the nation's only 100% digital fiber optic network with this new member benefit program.

Best Of All It's Free There is no cost to join the Theta Tau Members' Long Distance Advantage program. The program pays the standard switch-over fee charged by your local phone company** and there are no monthly fees, minimums, or restricted "calling circles."

- **Save up to 25%**
- **Rates as low as 9.9¢ per minute**
- **No Monthly Fees**
- **No Cost to Join**
- **Free Customized Theta Tau Calling Card**

* Rates as of 6/93

**Up to \$5.00



CALL NOW TO JOIN 1-800-435-6832

THETA TAU, PHONE HOME ?

Like most, you probably take picking up the telephone for granted. But with the Theta Tau Members' Long Distance Advantage (MLDA) program, you'll appreciate that convenience even more!

By signing up on the nation's only 100% digital fiber optic network, through Theta Tau, you can save up to 25% on your long distance telephone bill. With this special program, Theta Tau receives a portion of the cost of each call; and you receive significant savings. **All this at no cost to you just for picking up the telephone!**

The funding received from the program helps to maintain the services that we provide our members, like this issue of *The Gear*. There's no monthly minimum or other cost to join, and the program pays the standard switch-over fee charged by your local phone company. Most local telephone companies will now include MLDA calls on a single monthly bill so **you don't even have to write out a separate check for your long-distance phone bill.** In return, you are able to save on every long-distance phone call, to support Theta Tau, and to get a **free Calling Card featuring our Greek Letters.**

How do you join? Of course, you **just pick up the phone and call 1-800-435-6832!**



New Initiates

ALPHA

979 John Robert Auer, '90, Minneapolis, MN
980 Guillermo Minko, '91, Bloomington, MN
981 Randall Charles Mikola, '91, Wells, MN
982 Brandon Arthur Benson, '95, LeCrosse, WI
983 John Charles Bohke, '91, Maple Grove, MN
984 Jon Donivan Dignan, '92, Schofield, WI
985 John Alan Lovelless, '95, Madison, WI
1000 Justin Anthony Young, '95, Baton Rouge, LA
1001 Jeremy Donald Ames, '95, Washburn, WI
1002 Steven John Hehn, '93, Racine, WI
1003 Gregory Leo Herrera, '93, St. Paul, MN
1004 David Michael Ruhland, '96, Whitefish Bay, WI
1005 Bruce Allen Tanquist, '87, Fairmont, MN
1006 Donald Glenn Crain, '95, Scandia, MN
1007 Kent Robert Kolstad, '95, Buffalo, MN
1008 Dennis William Timm, '97, Ogdenburg, WI
1009 Troy Elvin Erickson, '95, Maplewood, MN
1010 Philip Douglas O'Konski, '94, Burnsville, MN

ZETA

876 Troy Alan Augustine, '92, Ellis, KS
877 Dana Michelle Meade, '93, Kansas City, MO
878 David Allan Nelson, '93, Omaha, NE
885 Gregory John Bak, '91, Defiance, MO
885 Kent Esten Meizer, '93, Wichita, KS
886 Diosdado George Salaveria, '90, Wheeling, IL
887 Anthony Zaide, '91, St. Paul, MN
892 Eric John Hays, '93, Ellis, KS
893 Albert E. Martin, '93, Olathe, KS
904 John Joseph McCluskey, '92, York, NE
905 Wirta K. Chivinda, '97, Topeka, KS
906 Robert Arlington Edwards, '97, Lawrence, KS
907 Angela Sue Jones, '97, Wheatland, WY
908 Cynthia Renee McCutchen, '97, Shawnee, KS
909 Derrick Richard Pauling, '95, Grants, NM
910 Cindy Sue Travniok, '96, El Dorado, KS
911 Kias Jonathan Campbell, '95, Portland, OR
912 Bassam Fouad Elkhatib, '95, Kuwait City, Kuwait
913 Ghassan Fouad Elkhatib, '95, Kuwait City, Kuwait
914 Wai Kwan Carrie Leung, '95, Hong Kong

MU

1232 William Scott Parker, '93, Jasper, TN
1233 Daniel Wayne Mattos, '90, Elmont, AL
1234 Debra Ann DePinto, '92, Helena, AL
1235 William Leigh Botters, '93, Birmingham, AL
1236 Jenni Rebecca Stevens, '92, Helena, AL
1237 Ruth Erin Babalis, '93, Vicksburg, MS
1238 Kevin Lee Held, '93, Florence, AL
1239 Mark Wayne Brothers, '92, Gadsden, AL
1240 Maurice Jack Prather, '93, Dothan, AL
1241 John William Gattis, '94, Gadsden, AL
1242 Wayne Thomas Ray, '93, Russellville, AL
1243 Julie Dana Wheeler, '93, Tuscaloosa, AL
1244 James John Podewitz, '93, Sarasota, FL
1245 Naiti Komunika Richardson, '94, New York, NY
1246 Kenneth Clark Midkiff, '74, Tuscaloosa, AL
1256 Woodrow Blake Beavers, '92, Wetumpka, AL
1257 Kurt Steven Rogers, '93, Russellville, AL
1258 David Leland St. John, Jr., '92, Troy, AL
1259 James Brenton Logan, '94, Tusculum, AL
1260 Christopher Landrum Cone, '93, Altoona, AL
1261 Jeffrey Warren Bull, '92, Tuscaloosa, AL
1262 Thomas Winston Turner, '94, Montgomery, AL
1264 Toby Vance Tyler, '95, Elberton, AL
1265 Greg Alan Bowen, '94, Monroeville, AL
1266 Tammy Cherelle Clark, '93, Thomasville, AL
1268 Elizabeth Collier, '95, Athens, AL
1269 Karen Lynn Page, '92, Bessemer, AL
1269 James Batson Daughn, III, '95, Jackson, MS
1270 Dedra Shortelle Cassel, '95, Brent, AL
1291 Louis Alfred Hall, Jr., '83, Birmingham, AL
1292 Michael Brent Watkins, '93, Theodore, AL
1293 Johnny James Howze, III, '95, Birmingham, AL

1294 Thomas Eric Watts, '94, Northport, AL
1295 Charles Michael Ross, '95, Tuscaloosa, AL
1296 Michael David Hawkins, '95, Trussville, AL
1297 Cecily Cathryn Ramsey, '97, Dothan, AL
1298 Larry Douglas Wilkerson, Jr., '94, Moss Point, MS
1299 Kenneth Anton Voss, '95, Wadley, AL
1300 Steven Wade Glenn, '95, Spanish Fort, AL
1301 Robin Elena Colston, '96, Montgomery, AL
1302 Kara Lin Welch, '96, Mercerville, NJ
1303 Heather Noel Tretchick, '96, Albany, GA
1304 Bobby Parizi, '94, Northport, AL
1305 Timothy Ryan O'Neill, '96, Metairie, LA

XI

551 Melanie Lynn Bauer, '93, Middleton, WI
552 Matthew Richard Lansing, '93, Stevens Point, WI
553 Douglas James Loftgren, '90, Appleton, WI
558 Michael Edward Collins, '93, Twin Lakes, WI
559 Christopher Robert Esswein, '93, Madison, WI
560 Curtis James Hampton, '93, Wausau, WI
561 Wayne Michael Nelson, '96, Nashotah, WI
562 Kimberly Eileen Wallace, '96, Two Rivers, WI

OMICRON

1069 Bruce Eugene Ankenbauer, '91, Grand Junction, IA
1070 Terry Allen Braun, '92, Albion, IA
1071 Matthew Paul Bright, '91, Knoxville, IL
1072 Rodney Edward Bristol, '92, Okemos, MI
1073 Eric Scott Campbell, '91, Homewood, IL
1074 Kent David Carlson, '91, Iowa City, IA
1075 Gregory Edward Christopher Chymcica, '92, Burlington, IA
1076 Thomas Matthew Coester, '90, Iowa City, IA
1077 Gregory Patrick Couser, '92, Cedar Rapids, IA
1078 Steven Michael Dawson, '91, Hinsdale, IL
1079 Kevin David Enckson, '91, Hinsdale, IL
1080 John Blair Gersper, '91, Mendota, IL
1081 Katherine Anne Golden, '91, Washington, IA
1082 Randy Lee Hudachek, '92, West Liberty, IA
1083 Steven Charles Hukvari, '91, Bettendorf, IA
1084 Robert Allen Johnson, '91, Burlington, IA
1085 Ryan Tat Kinkenberg, '93, Parkersburg, IA
1086 Shawn Dale Koltzman, '92, Buckeye, IA
1087 Douglas Paul Livernois, '91, Ankeny, IA
1088 Jeffrey Jerome Lussman, '92, Carroll, IA
1089 Melanie Anne Martella, '91, APO, NY
1090 Denise Ann Munoz, '92, Fort Madison, IA
1091 Erich Charles Pfaltzgraf, '91, Waterloo, IL
1092 Jeffrey George Preussner, '92, Lombard, IL
1093 Martin Douglas Schreiber, '91, Wayne, IL
1094 Anita Diane Slach, '92, Iowa City, IA
1095 Jeffrey Alan Smith, '92, Lisle, IL
1096 Michael Alan Smith, '91, Burlington, IA
1097 Todd Michael Smith, '93, Muscatine, IA
1098 Peter Christopher Vaillant, '91, Red Wing, MN
1099 Brent Douglas Weikel, '91, Sloan, IA
1100 Kent Kevin Wynn, '91, East Moline, IA
1101 Jeanette Ann Thelen, '93, Chicago, IL
1120 Julia Marie Anderson, '94, Davenport, IA
1121 Jennifer Marie Berger, '94, Cedar Rapids, IA
1122 Nicole Susanne Booth, '93, Iowa City, IA
1123 Angelina Gina Chung, '95, Waterloo, IA
1124 John David Cummings, '92, Iowa City, IA
1125 LaShawn Tama Freeman, '93, Chicago, IL
1126 Elizabeth Jean Furnish, '94, Vermillion, SD
1127 Michael Hamode Hasson, '93, Cedar Rapids, IA
1128 Kristen Rae Jakobsen, '94, Marion, IL
1130 Margy Cynthia Melendez, '94, Waukesha, WI
1131 Margaret Hilary Menic, '93, Ames, IA
1132 Doug Mark Moeller, '93, Salem, IA
1133 Gretchen Lynn Mondt, '94, Boone, IA
1134 Angela Jay Oelken, '93, Alton, IL
1135 Maria Kathryn Schmitz, '93, Dubuque, IA
1136 John Matthew Weston, '93, Postville, IA
1137 Jason Robert Wilbur, '93, West Union, IA
1138 Brian Lee Johnson, '93, Burlington, IA
1139 Shannon Elizabeth Adams, '94, Vernon Hills, IA

PI

919 Stephen Hamelin Jones, '84, Charlottesville, VA, Honorary Member
920 Johanna Lynne Marie Adams, '93, Fredericksburg, VA
921 Colleen Buckley, '93, Mt. Arlington, NJ
922 Hima Marie Pearson, '93, Woodbridge, VA
923 Melanie Anne Schueler, '93, Louisa, VA
924 Emily Wood Atkinson, '93, Newburyport, MA
926 Robert Bourisquol, Jr., '94, Woodbridge, VA
928 Hoong-Wai "Vincent" Chew, '94, Petaling Jaya, Malaysia
927 Dylan Eric Ginsburg, '95, Gettysburg, MD
928 Daniel T. Kepler, '95, Vienna, VA
929 James Michael Martin, '94, Richmond, VA
932 Andrew Paul Banila, '96, Emmaus, PA
933 Vidisha Jain, '94, Springfield, VA
934 Xin Cissy Jing, '96, Arlington, VA
935 Leopold Sungwook Kahng, '95, Poquoson, VA
936 Ellen Joyce Riegel, '96, Vienna, VA

RHO

1016 Daniel Christopher Bailey, '93, Grantsboro, NC
1017 Derek Marshall Byrd, '94, Raleigh, NC
1018 Andrew Douglas Hayden, '94, Raleigh, NC
1019 Vincent James Mills, '94, Apex, NC
1020 Gregory Lejun Requate, '95, Raleigh, NC
1021 Jason Powell Rhode, '91, Sandy, UT
1022 Joe Ru Wang, '95, Apex, NC
1023 Mark Edward Whiteaker, '94, Bluefield, WV
1024 Gregory Joseph Wojak, '87, Banner Elk, NC
1029 Thomas Michael Goodrum, '97, Huntersville, NC
1030 Charles Ernest Greene, '94, Charlotte, NC
1031 James Bruce Price, '96, Kingston, NC
1032 Matthew Joseph Akins, '96, Salisbury, NC
1033 Robert Todd Anderson, '94, Raleigh, NC
1034 Derek John Elin, '97, Rockville, MD
1035 Leonard Greg Estes, '97, Pleasant Garden, NC
1036 John Allan VanHook, '94, Franklin, NC

SIGMA

785 Robert Thomas Utzinger, '92, Miami Springs, OH
786 Thomas Anton Hammer, '93, Sheboygan, WI
787 Brett Darren Sless, '92, Hickory, NC
790 Steven Jeffrey Cassell, '95, Pickerington, OH
791 Jeffrey Kenneth Mooman, '93, Tipp City, OH
792 Michael Wayne Perkins, '94, Bethesda, OH
795 Troy Norwin Brown, '93, Columbus, OH
796 William K. Lennon, '94, Dublin, OH
797 Edward John Vinarich, '93, Seven Hills, OH
798 Thomas Gregory Mark, '94, Columbus, OH
799 Andrew James Cornell, '94, Canal Winchester, OH
800 Mark Christopher Mainak, '94, Brunswick, OH
801 Charles Conaway Miliken, '95, Cincinnati, OH
802 Brent Russel Phillips, '95, Bettendorf, IA
803 Kevin Kincaid Kendig, '93, Springfield, OH
804 Brandon George Harbaugh, '95, Valleyview, OH
805 Dino Anacinto Francesco Lusa, '94, Cleveland, OH
806 Karlos Kilton Fulton, Jr., '96, Columbus, OH

807 Anthony Lee Kittrell, '96, Columbus, OH
808 Todd Alan Blankenship, '96, Kent, OH
809 Bryan Kelly Schmitz, '97, Gahanna, OH
810 Ferdinand Anthony Retke, '97, Blanchester, OH

UPSILON

968 Brian Anthony Henson, '93, Forest City, AR
969 Jeffrey Scott Soderfeldt, '92, Walden, AR
970 Dung Le Hong Tong, '92, Barling, AR
971 Joseph Daniel Wilson, '92, Marianna, AR
972 Thomas Gregory Gill, '93, Washington, DC
973 Choechik Green, '90, Roadfield, AR
974 Philip Matthew Kinkadee, '94, Mena, AR
975 Mark Andrew Busse, '93, Washington, DC
976 James Christopher Dawson, '90, Bee Branch, AR
977 Robert Dae Masters, '94, Marshall, AR
980 Bjorn Magnus Hardind, '96, Washington, DE
981 Kenneth Thomas Emanuelson, II, '94, Sloat Springs, AR
982 Geoffrey Ray Webb, '95, Rudy, AR
983 Michael Norman Kyle, '94, Green Forest, AR
984 Alexis Paul Brown, '94, Rogers, AR
985 Brian Keith Beem, '96, Clinton, AR
986 Wilfred Ian Cumming, '96, Red Deer, Alberta, Canada
987 Mazat Nurdilalovich Touzelbaev, '92, Kazakhstan, Russia
988 Darren Russell Green, '94, Muldrow, OK
989 Christopher Shane Bowlin, '92, Winter Haven, FL
990 Robert Lyle Jenkins, '94, Little Rock, AR
991 Patrick David Ashmore, '97, Fayetteville, AR

PHI

728 Erik Edward Burns, '95, Maineville, OH
729 David Brian Crawford, '93, Libertyville, IL
730 Daniel Louis Fischer, '94, Bloomington, IL
731 John Michael Fortino, '95, Hartford City, IN
732 Christopher Gregory Gramza, '94, Lakeville, IN
733 John Franklin Gustafson, '95, Western Springs, IL
734 Rodney James Hemmerlein, '95, Jasper, IN
735 Henry Y Hong, '94, Merrillville, IN
736 Jeffrey Scott Humphrey, '94, Monro, IN
737 Steven Levi Jones, '94, Bedford, IN
738 John David Kimble, '94, Columbia City, IN
739 Mitchell Gene Ober, '95, Middlebury, IN
740 Roger Eugene Salyers, '95, Merrillville, IN
741 Randall Joseph Velikan, '94, Sidney, OH
742 Chad Christopher Beesley, '95, Valparaiso, IN
743 Joseph Brian Byrnes, '95, Cheslerhorn, IN
744 Brent Allen Caskey, '95, Richmond, IN
745 Steven Ross Anthony, '95, Kettering, OH
746 Dawood Robin Clark, II, '95, Lima, OH
747 Sean Paul Geiger, '95, Fishers, IN
748 Kevin John Loeffler, '96, Sylvania, OH
749 Michael Paul McMillen, '95, Glencoe, MO
750 Lawrence Alan Meyer, '95, Plainfield, IN
751 Craig Allen Shroyer, '95, Muncie, IN
752 Ryan Alexander Ward, '96, Greencastle, IN

CHI

1054 Sigfredo Valenzuela Delgado, '92, Phoenix, AZ
1055 Kara Diane Fesela, '94, Sierra Vista, AZ
1056 Jason Anthony Garcia, '94, Sierra Vista, AZ
1057 Joshua Hale Minyard, '94, Scottsdale, AZ
1058 Lee Allen Sousley, '93, Milwaukee, OR
1059 Christopher Kent Stewart, '93, Longmont, CO
1060 Andrea Lee Bentz, '94, Mesa, AZ
1061 Cheryl Lee Gardner, '94, Phoenix, AZ
1062 Jeffrey Remi Hedrick, '93, Tacoma, WA
1063 Shawn William Scarlett, '94, Scottsdale, AZ
1064 David Rene Aldecoa, '94, Tucson, AZ
1065 Adrian DeLeon, '94, Casa Grande, AZ
1066 Gabriel Hernandez, '94, Topeka, KS
1067 Ligo Anthony Ronghi, Jr., '94, Tucson, AZ
1068 Darren Lyle Russell, '94, Tacoma, WA
1069 Matthew Don Wadlington, '94, Grand Canyon, AZ
1070 Kitty Wang, '95, Mesa, AZ
1071 Karl William Yoerns, '94, Tucson, AZ
1072 Katherine Marie Young, '95, Sierra Vista, AZ
1073 David Rodolfo Contreras, '94, Tucson, AZ
1074 Ngoc Bich Nguyen, '95, Tucson, AZ

OMEGA

1011 Aaron Bruce Childs, '95, Scottsdale, AZ
1012 Scott Gene Darnall, '93, Gillette, WY
1013 Marston Lester Fortin, '93, Melelie, SD
1014 Eric J. Fuhner, '94, Clear Lake, SD
1015 Steven Dean Fuelleing, '94, Rapid City, SD
1016 Clavin Edward Goroski, '92, Sturgis, SD
1017 Patrick Terrance Hehn, '94, Rapid City, SD
1018 Steven Boyd Henriksen, '94, Brandon, SD
1019 Jeffrey Aaron Larson, '95, Mitchell, SD
1020 Wade Douglas Pierson, '94, Mitchell, SD
1021 John Travis Roy, '92, Douglas, WY
1022 Edward Daniel Simon, '94, Madison, SD
1023 Chad Michael Steinhauer, '95, Sioux Falls, SD
1024 Glenn Michael Stensaker, '94, Williston, ND
1025 Charles James Zeimel, '95, Pringle, SD
1026 John David Anderson, '95, Sturgis, SD
1027 Gregory Scott Fuent, '95, Armour, SD
1028 Eric Michael Glaser, '95, Mandan, SD
1029 Chad William Gortmaker, '95, Canstota, SD
1030 Daniel James Hartmann, '94, Sturgis, SD
1031 David William Hecker, '95, Bloomington, MN
1032 Aaron, Lewis Klein, '95, Spirit Lake, IA
1033 Quinton Maurice Larson, '94, Rapid City, SD
1034 Jason Scott Lukken, '95, Omaha, N
1035 Daniel Glen Oveson, '95, Bloomington, MN
1036 Aaron Wade Sanders, '96, Spirit Lake, IA
1037 Daniel Joseph Thuringer, '95, Spirit Lake, IA
1038 Robert John Utecht, '95, Essex Junction, VT
1039 Gary Robert VanCleave, '95, Armour, SD
1040 Robert Clark Fallbeck, '96, Rapid City, SD
1041 Seth Boone Feyereisen, '96, Gregory, SD
1042 Claton Matthew Francis, '96, Sturgis, SD
1043 Tom Harlon Graves, '95, Clark, SD
1044 Kyle Ryan Gruhn, '96, Dallas, SD
1045 Jason Lee Jackson, '96, Gillette, WY
1046 Shane Allen Matt, '96, Philip, SD
1047 Antonio James Olander, '96, Pierre, SD
1048 Joseph Kelly Perkins, '96, Custer, SD
1049 Scott Charles Resenauer, '94, Hettinger, ND
1050 Chad Leroy Travnick, '96, Dallas, SD
1051 Joshua Mark Week, '96, Wenzelchee, WA

GAMMA BETA

572 Joseph Leopold Roth, '91, St. Louis, MO
580 Richard Horatio Salas, '92, Arlington, VA
582 Thomas Andriola, IV, '91, Washington, DC
583 Edward William Amor, '93, Willoughby, OH
584 Kevin David Groat, '93, Sunderland, MD
585 Roshan Jasfar, '90, Kelantan, Malaysia
586 Kara Maria Morley, '93, Drexel Hill, PA
587 Jason Britt Newlin, '94, Ft. Collins, CO
588 Ronald Thomas Repasi, '92, Mechanicsville, MD
589 Adam Mitchell Werner, '92, Stamford, CT
601 Charles Mercer, '94, Vienna, VA
602 Paul Anton Miller, '94, Phoenix, AZ
603 Gregory Ana Ferguson, '95, Spring Valley, NY
604 David Glen Hesprich, '95, Huntington Beach, CA
605 Cory Dane Knudtson, '95, Milford, IA
606 Edward Alan Pan, '95, McLean, VA
607 Rebecca Lynn Roesch, '95, Loudonville, OH
608 Jeffrey Lawrence Stroman, '93, Chestnut Ridge, NY
609 Abdou Secka, '95, Banjul, Gambia
610 Adam Louis Micheli, '95, Leawood, KS
611 Anthony John Cruz, '94, Upper Marlboro, MD
612 Gladys Gomez Custodia, '96, Baldwin Park, CA
613 Skandakumar Easpartharajan, '96, Sri Lanka
614 Erin Tracey Knight, '96, Lake Forest, CA
615 Asher Alan Porat, '96, Washington, DC
616 Benjamin Feldman, '96, Bethesda, MD
617 Stephen Michael Helman, '96, Houma, LA
618 David Mordechai Sloan, '96, Philadelphia, PA
619 Huy Tuong Nguyen, '96, Herndon, VA

EPSILON BETA

375 Jerry Daniel Amburgey, '93, Southfield, MI
376 Joel F Anusion, '94, Sterling Heights, MI
377 John Eric Ball, '93, Royal Oak, MI
378 James Jason Daltolo, '93, Allen Park, MI
379 Brian B Patel, '94, Chicago, IL
380 John Paul Torney, '94, Detroit, MI
381 Jeffrey Joseph Zoltowski, '93, Dearborn Heights, MI
382 Jason Clark Mears, '95, Grosse Pointe Woods, MI
383 Michael Gary Carpenter, '95, Allen Park, MI

384 Darryl Thomas Fornatoro, '94, Warren, MI
385 John David Gardner, '94, Clawson, MI
386 David Michael LaPraine, '95, Warren, MI
387 Thomas Robert McCulloch, '95, Hazel Park, MI
388 Harold John Wurster, '96, Detroit, MI
389 Chad William Hamish, '94, Dearborn Heights, MI
390 Michael Colin May, '94, Clawson, MI
391 Brian Charles O'Neill, '95, Lincoln Park, MI
392 Marc Thomas DeRemaker, '97, Detroit, MI
393 John Vincent Fontana, '96, Livonia, MI
394 Andrew Bailey Nappa, '97, Warren, MI
395 Corey Lee Pock, '94, Roseville, MI
396 Julian Paul Thornton, '94, Dearborn, MI

IOTA BETA

242 Brian Thomas Gavin, '95, Grand Rapids, MI
243 Bradley James McCarthy, '93, Fostoria, OH
244 Christopher John Brucker, '94, Fostoria, OH
245 John Cleary Dunahy, '92, Oxford, MI
246 Amy Danielle Scher, '95, Adrian, MI
247 Danyelle Lynn Skirlets, '92, Fairview Park, OH

KAPPA BETA

467 Richard Everett Boyd, Jr., '93, Jackson, MS
468 Raymond Gee Crow, '94, Carksdale, MS
469 Shane Edward Creel, '94, Bogalusa, LA
470 Jonathan Preston Hughes, '94, MSU, MS
471 Penny Elaine Michael, '94, Ripley, MS
472 Melissa Kay Pennacchio, '94, Hermando, MS
473 Chad Christopher Wasson, '94, Bogalusa, LA
474 Ryan Keith Brown, '95, Water Valley, MS
475 Kathryn Elizabeth Dennis, '94, The Woodlands, TX
476 Stephen Andrew Richards, '95, Pascagoula, MS
477 Eric Jason Holmes, '93, Decatur, MS
478 Michael Byron Weider, '95, Long Beach, MS
479 Michael Dale Roberts, '94, Baldwin, MS
480 Philip Dean Sigler, '95, Millington, TN
481 Daniel Shane Beets, '95, Columbia, MS
482 Holl Maleigh Miles, '96, Pascagoula, MS
483 William Franklin Sharp, Jr., '94, Newton, MS
484 Steve Lane Williams, '94, Columbia, MS
485 James Neal Wray, '94, Southaven, MS
486 Jody Lee Woods, '95, Moss Point, MS
487 Virgil Aerie Knight, Jr., '97, Gloster, MS
488 Michael Lamar Lindsay, '96, Cruger, MS

LAMBDA BETA

258 Anthony Scott Bosser, '95, Knoxville, TN
259 Scott James Purkey, '94, Knoxville, TN
260 Stephen Michael Garr, '95, Cleveland, TN
261 Timothy Martin Shults, '95, Cleveland, TN
262 William Barry Barnes, '96, Goodlettsville, TN
264 Lawrence Elton Marley, Jr., '94, Memphis, TN
265 Lowell Justin Wikre, '96, Cleveland, TN

NU BETA

233 Chad Robert Englekes, '94, Plattville, WI
234 Kerri Ross Fiedler, '93, Plattville, WI
235 Dawn Marie Fiorentino, '93, Racine, WI
236 Justin Keith Gelhar, '93, Green Lake, WI
237 Deborah Ann Gonnella, '94, Rochester, MN
238 Mark Kenneth Shubak, '94, Warren, WI
239 Gregory Richard Adams, '93, Plattville, WI
240 Lisa Marie Dreifuster, '95, Rhinelander, WI
241 Jennifer Eva Fredrickson, '95, Etrick, WI
242 Jeffrey Lawrence Gruenberger, '94, Union Grove, WI

243 David Alan Peterson, '93, Mequon, WI
244 Charles Edward Schulz, '93, Hartford, WI
245 James Daniel Weber, '95, Plattville, WI
246 Daniel Charles Dederig, '93, Oshkosh, WI
247 Cory Michael Don, '93, Pulaski, WI
248 Eric David Glantz, '94, Deforest, WI
249 Matthew Clay Loggnow, '93, Milwaukee, WI
250 Patrick Andrew Smet, '94, Stoughton, WI
251 Corey John Stout, '94, Onalaska, WI
252 Kimberly Jeanne Bahl, '95, Shullsburg, WI
253 Rebecca Anne Glanz, '97, Deforest, WI

Continued on page 19



In Memoriam

With deep regret, we must report that three Past Grand Regents passed away this spring. All of us in Theta Tau who were privileged to be associated with them over the years personally feel a deep sense of loss as a result of their passing, but the memory of each will continue to inspire all Theta Taus to greater service to our Fraternity. In memory of each of these Brothers, Grand Regent Bettinger declared a period of mourning for the Fraternity at large.



William K. Rey
Mu '45

William Kenneth Rey, M '45, passed away on April 20, 1993 as a result of a lung infection and complications for which he had been hospitalized.

Brother Rey was born in New York City on August 11, 1925. His entire academic and professional careers were at The University of Alabama where he earned the degrees BS in Aerospace Engineering, 1945, and MS in Civil Engineering, 1949. He had been on the faculty of the university since 1946, initially as graduate assistant and instructor, advancing through the ranks to eventually become Assistant Dean for Undergraduate Programs in Engineering. He served his chapter as Treasurer, Scribe, and Regent; and later, he was to serve as Adviser to Mu Chapter for more than thirty years. First elected to the Executive Council in 1956 as Grand Outer Guard, he subsequently served as Grand Vice-Regent, two terms as Grand Regent (1962-66), as Delegate-at-Large, and as Grand Marshal.

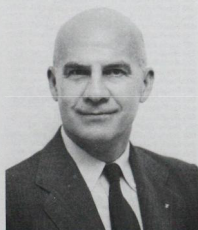
Those attending the Convention in 1992 will recall this dynamic and distinguished Brother as he addressed the Convention on

the occasion of his induction into the Alumni Hall of Fame (see article, page 11).

He was buried from Calvary Baptist Church where he had served as Deacon for over twenty-five years, and as Sunday School Teacher in the College Department.

Brother Rey was preceded in death by his wife, Ruth, and survived by their children, William K. Rey, Jr., 13 Dogwood Lane East, Tuscaloosa, Alabama 35405, and Jeanette Rey (Mrs. Felix) Todd, 1308 17th Avenue, Tuscaloosa, Alabama 35401, and his brother, Robert F. Rey, M '51, 56 Blackbriar Drive, Colts Neck, New Jersey 07722-1204. At the time of his death, he was engaged to wed Frances Arthur Tanner who had been widowed a little over a year longer than he.

In addition to membership in various engineering organizations, for more than twenty years he was a member of Kiwanis, and had served as President of the Tuscaloosa Club. He was Zone Chairman, and Faculty Adviser of The University of Alabama Circle K Club for many years, and also served as Lieutenant Governor of the Alabama District. He was a charter member of The University Club, serving it in various positions, including President.



A. Dexter Hinckley
Theta '25

Alfred Dexter Hinckley, Θ '25, passed away on May 7, 1993 at the age of ninety years.

He was in retirement from his professional career since 1967 and living in Guilford, Connecticut. Until 1986, he lived at "The Ranch" in Guilford. He and his wife, Dr. Elizabeth B. Hinckley, bought the place

in 1954, and she lived there until her death in 1970.

Brother Dex Hinckley was born in New York City on December 9, 1902. He received his AB degree from Columbia University in 1925 and his EE from the Columbia School of Engineering in 1927. He returned to Columbia in 1928 as Instructor in Electrical Engineering, becoming Assistant to the Dean, and Adviser to Theta Chapter, in 1935.

Brother Hinckley began his service on the Executive Council as Grand Outer Guard in 1941. He was elected as Grand Regent at the 1954 Convention to lead the Fraternity at the start of its second half century. He presided over the great Convention discussions which culminated in the Fraternity's decision to eliminate the "white clause" from its membership requirements. In recognition of his years of service, Brother Hinckley was presented Theta Tau's Citation for Distinguished Service in 1963. In 1964, the 25th Biennial Convention of the Fraternity was named in his honor.

During his years as Assistant to the Dean at Columbia, Brother Hinckley served as adviser to some 300 college pre-engineering students. He was Secretary of the School Faculty Committee on Instruction. In 1940, he assisted in the basic work of the Engineering Defense Training program at Columbia, serving as its Director for the duration of the war. He served as Executive Secretary of the Columbia Engineering Alumni Association, and as its President for three terms.

Brother Hinckley's interest in illuminating engineering stimulated his participation in the Illuminating Engineering Society (IES). After activity in the New York Section, including Chairmanship in 1935, he served on various national committees and was a member of the IES governing board. In 1944, he was invited to fill the post of IES Executive Secretary, continuing this service for 23 years. From 1958 until his retirement in 1967, his title was Managing Director. Upon his retirement, he was given special recognition by election as an Honorary Past President of the Society.

He is survived by a son and daughter-in-law, Dr. and Mrs. Alden Dexter Hinckley, 5604 Bloomfield Drive, #102, Alexandria, VA 22312-2524, five grandchildren, and four great-grandchildren.



C. Ramond Hanes

Sigma '24

Charles Ramond Hanes, Σ '24, passed away on June 11, 1993 as a result of a stroke suffered in late April, shortly after returning to Lima from Florida. He was 92 years of age.

Brother Hanes was born on the same property outside Lima, Ohio, where he had lived since retirement in 1973. He was a member of Tau Beta Pi and earned the degree Bachelor of Civil Engineering from The Ohio State University in 1924, and the same year married Aline Flynn. Both Ray and Aline, always young at heart, were known to many members through their attendance together at Fraternity events, most recently the 1989 National Conference. She passed away in May, 1992.

His entire professional career was with the Ohio Highway Department. He was active in the American Society of Civil Engineers, American Road Builders Association, American Association of State Highway Officials, Columbus Engineers Club, Masonic Orders, and the National Society of Professional Engineers, serving as state president and as national vice president.

In 1985, Brother Hanes was part of a delegation which toured China with the Citizen Ambassador Program of People to People International.

While a student at The Ohio State University, he was president of the Engineers' Club which eventually became Sigma Chapter. Initiated as a charter member, he continued to be active as an alumnus in his chapter's house corporation. He served the national Fraternity as Regional Director, and for a decade beginning in 1958, as a member of the Executive Council. He served as Grand Inner Guard and Grand Vice-Regent before being elected Grand Regent in 1966. The Tennessee Technological University Colony was certified during his term as Grand Regent, and

Brother Hanes later presided at its installation as Lambda Beta Chapter.

Brother Hanes was honored by the Fraternity through the naming of the National Convention in 1986 in his honor, and in 1987 by induction into the Alumni Hall of Fame with the first class of laureates after the Founders.

Brother Hanes is survived by his daughter Gerry and her husband Michael Pavick, 4384 Idlebrook Drive, Akron, OH 44333; and by his son Robert Hanes and his wife Jane, 5306 Far Hill Court, Indianapolis, IN 46226; seven grandchildren; and seventeen great-grandchildren.

Roger Randall Dougan Revelle, E '29, was born in Seattle in 1909. One of the century's most eminent men of science, he was often referred to as "the grandfather of the greenhouse effect" for his concern about the increase in atmospheric carbon dioxide. Geologist, oceanographer, educator, statesman, and patron of the arts, he was the founder of the University of California, San Diego, whose first college was named in his honor, as was the Center for Population Studies building at Harvard, and as will be the ship for multi-disciplinary research to be commissioned in 1994. He passed away July 15, 1991, just a month before being inducted into the Alumni Hall of Fame (see article, page 11).

Harold George Donnelly, EB '36, was born in Detroit in 1912. After high school, he worked a year as a samplehouse hand in the International Nickel Company smelter in Ontario. This sparked an interest in metal technology so he enrolled at City College (now Wayne State University). After graduation, he began teaching at Wayne, becoming Chairman of the Chemical and Metallurgical Engineering Department in 1953. His MS and PhD were from the University of Michigan.

While on the faculty at Wayne, he organized the student chapter of AICHE, and served as Adviser to Epsilon Sigma Fraternity which became Epsilon Beta Chapter in 1951. Known for his great rapport with students, he was Adviser for over 30 years, and served as Grand Vice-Regent (1954-56). He passed away in August, 1991.

Arthur F. Cervenka, Θ '41, died at Wuesthoff Hospital on Sunday, March 28, 1993. Mr. Cervenka was born in Bohemia, New York, July 8, 1917 and lived there in Oakdale, New York until moving to Rockledge in March of 1982.

Brother Cervenka received his B.S. in Mechanical Engineering at Columbia University, New York in 1941, and later received his Professional Engineering Certificate for the State of New York. He had worked at Grumman Corp. from 1941 until

his retirement in July of 1977. In addition to being a member of Theta Tau, he was a Life Member of the Society of Manufacturing Engineers, where he served as International President from 1967 to 1968. He was a life member of the Fellows Institute of Production Engineers of London, England. Also, a Life Member of Columbia College Alumni, Columbia Engineering School Alumni Association.

Survivors include his wife of 49 years, Gladys Hunt Cervenka; a dear sister-in-law, Virginia H. McGuigan; and her four children.

ALPHA

Harold Barber, '29, 3/17/92
Thor Waldemar Bergquist, '41, 12/22/90
Chester Eugene Dekko, '46, 9/25/92
James E Dowd, '32, 2/1/92
Donald Nyquist Duncanson, '49, 6/17/91
Charles Gordon Ekroft, '61, 6/18/92
Robert H Kranzfelder, '26
Clarence A. Kutz, '30, 10/23/92
Knut Eric Loden, '84, 3/16/93
Loren Wenzel Neubauer, '26, 6/21/91
Norbert Francis Ruszaj, '38,
(Honorary Member)
Kenneth Winfred Swanson, '59, 2/17/92
Russell Ambrose Taylor, '28
Oscar Wehmanen, '35, 2/24/93

BETA

Stephen Allen Bergman, '37
Norman Lee Gruber, '32, 3/2/91
Henry A Kackley, '26, 8/21/86
William A. Longacre, '29, 7/
Herbert Martin Lundstrom, '51, 11/18/91
David Lawrence McCain, '58, 10/1/91
Henry A McDougall, '22, 1/7/92
Wesley Oliver Moberg, '41, 9/21/92
Harris A. Neil, '25, 12/20/90
Stephen James Owens, '31
Lloyd Lester Seestedt, '27, 3/7/93
Kay Allen Spooner, '49, 1991

GAMMA

Theodore Frederick Adams, '29
George Harrison Allen, '37, 3/27/91
Richard Oliver Barnes, '55
Joseph Quincy Berta, '41, 1989
William Wendell Cline, '30
John Coolbaugh, '30
Alfred R. Flinn, '13
Thomas Russel Frederiksen, '42, 6/9/92
Eugene F Gallagher, Jr, '28
George W. LeMaire, '26
Victor J. Lynch, '20
John Gilbert Marshall, '31
William Adams McLaughlin, '27, 5/9/90
James Ira Mercer, '50, 3/18/91
Earl Nelson Murray, '42, 4/20/91
John Lewis Robison, '31
Henry G. Schneider, '18
Randall Hugh Taylor, '41
John Anthony Tiehen, '44, 2/3/91
Clement Adelbert Weintz, '27, 5/8/92
William Francis Welch, '33, 9/21/91
Benjamin F. Zwick, '29

DELTA

Ray Emil Bolz, '40, 9/11/91
William Allen Crawford, '39, 3/17/92
Donald Frank Dempcy, '32
Dennis Bernard Heppner, '64, 4/21/91
Alfred Bate Jepson, '38, 7/18/91
William Robert Kanda, '47, 12/23/92
Leo Jacob Klingler, Jr., '42, 2/5/93
Bert Evan Mansell, '40, 8/11/92
Thomas Jerome McDonough, '47, 10/28/92
James Robert McKinney, '36, 5/5/91
Kenneth F. Sibila, '35, 9/7/91
Watson Ellsworth Slabaugh, '29, 8/31/91
Robert Irving Strough, '42, 1/9/92
Bernard Alfons Wiecek, '47, 10/26/91

EPSILON

Charles Earl Haney, '42, 2/1/92
John William Harding, Jr., '38
Mason L. Hill, '26
Henry George Jones, Jr., '31, 10/1/91
Roger Randall Dougan Revelle, '29, 7/15/91
(Hall of Fame Laureate)
James Donald Ross, '30, 1/91
Thomas Wiley Stratton, Jr., '65, 1990
Jack Van Wyke, '35, 5/20/93

ZETA

Floyd E. King, '30, 1/1/92
Harold Lyman Kipp, '31, 2/10/92
(Honorary Member)
Edward John LaCroix, '42, 7/20/92
Jack Courtney Lansing, '19, 6/18/90
Lawrence James Merrigan, '55, 1/4/92
Alexander Clark Mitchell, '39, 12/2/92
Foster W. Myers, '21
William L. Patterson, '27, 2/19/93
Frank Taylor Quinn, Jr., '26

ETA

Homer Adron Burnell, '28, 6/26/92
John Paul Engel, '27
Willard Lettaret Pryor, '17
Robert Wainwright Rogers, '26, 6/4/89
Roscoe Harwil Smith, '23, 1/24/93
Charles Hinchman Topping, '28, 1/13/91

THETA

Charles M. Brister, Jr., '14
(Charter Member)
Gardner Lane Brown, '42, 9/29/91
Arthur F. Cervinka, '41, 3/28/93
Henry Edward Crampton, Jr., '30
Khatchik Ohannes Donelian, '37, 10/25/91
Maurice Michael Duhig, '28
Gustavo Galvis, '71, 6/19/83
Alfred Dexter Hincley, '27, 5/7/93
(Grand Regent 1954-58)
Don Orbert Noel, '29, 8/7/91
William E. Stringer, '35, 4/5/90

IO TA

William Richard Anderson, '43, 1/27/93
Joseph David Crites, '46, 6/3/91
Thomas James Dover, Jr., '30
Joseph Francis Frewer, '31, 10/1/92
Muir L. Frey, '22, 9/29/90

Robert Emil Hackmann, '46, 12/4/92
August Paul Koopmann, '34
Robert Thomas Mildenstein, '69
Buddie Ray Morris, '54
John Rockwell Post, '39
Glenn Lamb Staley, Jr., '44, 11/10/92
Marshall Wilmer Taylor, II, '37

KAPPA

Pierre Albert Bezy, '29, 8/21/91
John Arthur Burke, '20, 1/88
Franklin Henery Davis, '31, 2/21/92
Paul B. Dusenberry, '22, 7/12/92
Richard Harry Giles, '35
Arthur D. Hyde, '27
Harold A. Low, '31, 11/11/91
Donald E. Peterson, '28, 4/24/92
Ralph Edwin Risley, '20, 11/22/90
Charles H. Sheppard, '17, 9/1/87
Graeme B. Supple, '27, 9/12/91
Ralph Marion Wandling, '29, 2/25/92

LAMBDA

John Winston Alter, '26, 1/13/92
Allen Derbridge Christensen, '27
Raoul Carter Evans, '41, 7/22/91
Wesley Hyrum Ford, '22
Halbert Frank Garbe, '47, 12/25/91
Kenneth Smith Greene, '27, 3/13/92
Byron Griffith Jones, '29, 10/21/91
Merlon L. Stevenson, '21, 1/8/93

MU

Carl Edwin Bragunier, '35, 9/1/91
Judson Daniel Brance, '22, 4/19/91
Richard Eugene Ely, '49, 8/25/91
Horace Barber Hanson, '38
Joseph Edward Harris, '51, 1/18/92
James Francis Hegenwald, Jr., '43
Warren Gray Keith, '34, 8/29/92
(Honorary Member)
Harold Murphy Owen, '43
Philip Joseph Pincha, '55, 8/9/92
Uhlend Ottis Redd, Jr., '29, 11/7/90
James Ralph Reid, '56, 9/30/92
William Kenneth Rey, '45, 4/20/93
(Grand Regent 1962-66,
Hall of Fame Laureate)
Ralph Bolyn Shofner, '50, 10/30/92
Clarence Joseph Wendel, '43
Dossy Hurdle White, '25, 1/29/91

NU

Thomas Franklin Brastow, '27
Alpheus Fowkes Carson, '26
Marion Francis Davis, '34, 7/17/91
Melvin Leitner Jones, '33, 10/20/90
Henry Russell Loxterman, '30, 2/14/91
Harold Foster Neff, '33, 5/29/92
Harry Rutherford Wall, '31
Paul Runyon Watson, '38, 3/91

XI

Michael John Majchrzak, '86
Timothy John Zantow, '87, 10/4/92

OMICRON

Herman Dyer Brice, '34, 10/1/92
Kenneth Max Bright, '48, 7/14/91
Kenneth Charles DeWalt, '27, 5/27/91
Carl Thomas Egger, '59
Harold Alonzo Embree, '31
Alva Adams Evans, '49, 11/25/91
Donald James Fitzpatrick, '54
Henry Lawrence Godeke, '35
Leslie Harold Griffith, '48, 12/13/92
Jacqueline Spaulding Hauser, '82, 10/31/91
Frank Stanley Junk, '37, 4/8/81
LeRoy Lichtenstein, '52
Robert Miller Macy, '30, 2/13/91
William George Maguire, '58
Robert Randall Nelson, '36, 1/18/92
LaVerne Louis Miller, '53, 1/7/92
Gary Dwight Moon, '52
Leo Aloysius Murphy, '21
Olney Wellington Perry, '35
Harold R. Phelps, '25
Emil H. Rausch, Jr., '27, 10/15/90
John L. Rohwedder, '33
John Henry Rump, '59, 8/9/91
Dwight Kindell Shore, '21
Martin William Stiller, '40, 12/28/90
Joseph Walter Sutcliffe, '54

PI

Roy Emmett Crews, '41
Harman Anderson Dinwiddie, '39, 3/14/92
Samuel Grayson Harris, '44
James Robert Hayes, '42
Arthur Winston Holt, '26, 6/4/92
William Milligan Irvine, '36, 8/17/91
Thomas Merriam Linville, '26
John Thomas Ward, '40, 5/23/92

RHO

Louis H. Asbury, Jr., '38, 3/29/91
Floyd Powell Barnes, '44
Grady Justice Bell, Jr., '39, 8/5/89
Richard Van Biberstein, '21, 1991
William French Bristow, Jr., '28, 3/15/92
Theodore Cecil Brown, '31, 1/29/91
(Honorary Member,
Executive Council Member 1948-52)
Pat Thomas Fugate, Jr., '46, 1/2/92
Jacob Shuford Geitner, '26
Junius Edward Griffith, '26
Gilbert Page Hall, '28, 1991
William Croft Harris, '35, 4/21/92
Caldwell Augustus Holbrook, '31, 9/4/91
Harold Wesley Humphreys, '43, 9/13/92
Thomas Zack Osborne, '50, 12/1/91
Richard Moore Parker, '50, 12/18/92
Laurence Ernest Poteat, '50, 1/26/93
Henry Alley Ricks, '32, 12/27/92
Ephraim Lee Sawyer, '38, 3/22/91
Henry Harby Shelor, '25, 9/15/90
Henry Brower Smith, '38, 3/15/92
Roy Lee Yelverton, Jr., '47, 7/19/88

SIGMA

Gordon Marion Amstutz, '27, 3/3/93
(Charter Member)
Harry Eugene Ashmead, '29
Stanley Hubert Barnes, '31, 12/4/91
John Dana Cole, '30, 4/9/92

Mervin Francis Devine, '23
(Charter Member)
Howard Alfred Douglass, '41, 11/1/90
James Edwar Finneran, Jr., '36
William Lee Flumerfelt, '56, 3/1/92
Bernard Frederick Gayer, '29, 11/7/91
Glenn Frederick Graf, '26
Charles Ramond Hanes, '24, 6/11/93
(Grand Regent 1966-68)
Hall of Fame Laureate, Charter Member)
Charles Newton Hay, '34, 12/19/92
Ernest Fred Keyerleber, '24, 11/90
(Charter Member)
Donald Thomas Kiefer, '71, 4/6/85
James Anthony Millard, '56, 5/1/92
Ervin John Minderman, '51, 11/11/91
James Wallace Smeiker, '44

TAU

Eugene Daniel Britt, Jr., '43, 3/5/91
Charles Foster Charfield, '32, 9/29/91
Gerald Lane Conklin, '48, 4/15/91
George Mynard Deyoe, Jr., '29, 1/11/93
David Muir MacAlpine, '30
DeForest Edward Sanford, '39, 12/16/91
Stanley Joseph Urbanowicz, '52, 4/29/91
Stanley Hobert Wilson, '28, 10/19/91
Edward Daniel Yehle, '33, 4/23/91

UPSILON

Robert Lockard Atkins, '33, 8/21/91
Robert Earl Boone, '51, 10/22/90
Alfred Eugene Johnson, '54, 3/31/92
(Honorary Member)
Ben Babcock Johnstone, '39, 7/23/91
William Austin Lewis, Jr., '38, 4/19/91
Nixon Wesley Powell, '50, 10/15/92
Kenneth Fred Shoephester, '30, 3/5/93
Hodge Jackson Vineyard, '47

PHI

Carl Noble DeVaney, '30
Mark V. Keeler, '25, 2/9/93
Verlin Morris Wann, '34, 12/10/89
Bert Francis Wardell, Sr., '38, 4/30/92
Leonard Benedict Wocholski, '32
Raymond Elliott Zirkle, Jr., '50

CHI

John Williams Anthony, '46, 11/9/92
Nicolaas Gerrit Johannesma, '58, 9/7/91
James L. Knickerbocker, '54, 3/7/93
William Porter Kohl, '50, 1/1/90
Edmond Francis Marum, '37
Jack Colwell Pierce, '38, 2/11/93
Donald Duane Shipley, '54
David Howard Woodruff, '63, 12/10/91

PSI

John Bartlett Calkins, '44, 11/17/92
Virgil Ralph Chamberlain, '81
Frank Joseph Cor, '40
Thor Wilhelm Johnson, '41, 10/10/92
Richard Nelson Miller, '52
William Mitchell, Jr., '40, 4/27/92

OMEGA

James Franklin Bork, '37, 3/20/92
Andrew Carl Boschker, '52, 8/13/91
Douglas Glen Coe, '57, 3/1/92
David Lloyd Davies, Jr., '39
Richard Neil Doolittle, '35, 4/5/93
John Gray, '50, 8/25/91
Clinton Elwood Harding, '40, 10/21/92
James E. Lind, '39, 8/26/92
Daniel Vincent O'Keefe, '38, 10/28/92
Archibald Logan Slaughter, '33, 3/4/93
(Charter Member)

GAMMA BETA

John Royal Brasel, '32
James A. Kelley, Jr., '28, 3/5/93
Kenneth Richard Sommer, '38, 1/90

DELTA BETA

Neil Shaw Balfour, '44, 8/6/92
John Joseph Byder, '42, 1991
Jack Nicholas Danhauer, '45
Eugene Milton Deane, '46

EPSILON BETA

Harold George Donnelly, '36, 8/91,
(Grand Vice-Regent 1954-56)

ETA BETA

Virgil Paul Hammerle, '63, 7/15/91

IOTA BETA

Darryl Warren Busser, '69

LAMBDA BETA

Raymond Courtney Woods, '75

New Initiates

Continued from page 15

NU BETA (cont.)

254 Matthew Donovan Gray, '38, Appleton, WI
255 John Paul Hilmer, '33, Fond Du Lac, WI
256 Lea Marie Koeller, '97, Potomac, MD
257 Ronald Fred Manske, Jr., '97, Theresa, WI
258 Alissa Diane Oehleke, '94, Freeport, IL
259 Jon Leonard Resler, '96, Onalaska, WI
260 Jason Thomas Van Dornen, '97, Kaukauna, WI
261 Brian Samuel Wagner, '96, Waunakee, WI
262 David Thomas Watry, '97, Saukville, WI

XI BETA

54 Martin James Matties, '92, Dearborn Heights, MI
60 Sinisa Antoski, '95, Warren, MI
61 David Victor Kowachek, '95, Sterling Heights, MI
62 Robert David Loney, '95, Mt. Clemens, MI
63 Stanley Mark Platkowski, '92, Farmington, MI
64 Milan Dusan Bjelobri, '96, Troy, MI
65 Jeffrey Allen Kotia, '94, Berkley, MI
66 Robert Alan Mathews, '94, Sterling Hts., MI
67 Marco Antonio Bianchini, '96, Mt. Clemens, MI
68 Philip Beltrao Santoro, '96, Mt. Clemens, MI
69 Aaron John Dionne, '95, Rockford, MI
70 Mark John Macfarlane, '96, Troy, MI
71 Adam Scott Ostapowicz, '95, Westland, MI
72 Paul Henry Samczak, '96, Westland, MI

73 Mark Lawrence Wells, '96, White Lake, MI
74 Derrick Roger Black, '96, Rochester Hills, MI
75 Mark Andrew Kosciol, '95, Troy, MI
76 Gerard Joseph Lietz, Jr., '97, Rochester Hills, MI
77 David Michael Pickens, '96, Troy, MI

OMICRON BETA

75 Peter John Gallo, '95, Garden City, MI
76 Alan Paul Petrucci, '94, Taylor, MI
77 Hossam Mahmoud Tanana, '94,
Dearborn Heights, MI
78 Michael Dennis Gill, '93, Grosse Pointe, MI
79 Louis Gage Hill, '95, Grand Rapids, MI
80 Sandra Jo Ham, '92, Clawson, MI
81 Jeffrey Randolph Holmes, '93, Livonia, MI
82 Michael Joseph Sroka, '96, Dearborn Heights, MI
83 Quang V. Tieu, '96, Royal Oak, MI
84 Andrew Jason Christlieb, '96, Novi, MI
85 David Edmund Collins, '93, Canton, MI
86 Tina Carol Goodall, '95, Redford, MI
87 Glenn Joseph MacRae, '95, Troy, MI
88 Renee Lynette Demaree, '96, Garden City, MI
89 James Michael Barkoot, '95, Redford, MI
90 Bret Dean Bentzinger, '95, Dearborn, MI
91 Jeremy Anthony Carter, '95, Livonia, MI
92 Son Van Ly Do, '96, Garden City, MI
93 Jeffrey Luke Thomas, '95, Farmville, MI

PI BETA

33 Kevin James Beber, '94, Union, MI
34 David Michael Byrne, '92, Wyoming, MI
35 Derek Lewis Diget, '94, Kalamazoo, MI
36 Anthony Michael Bush, '92, Hart, MI
37 Curt Douglas Campbell, '93, Horton, MI
38 Jeffery James Dowd, '92, Muskegon, MI
39 Basim Nabih Fares, '92, Columbus, OH
40 Sherry Lynn Graham, '92, Lake Odessa, MI
41 Matthew Herbert Heintz, '93, Bad Axe, MI
42 Joseph Michael Kaczmarek, '92, Allen Park, MI
43 Kelly Lynn Lang, '92, Swartz Creek, MI
44 David Michael Paul, '92, Newbury Park, CA
45 Howard Scott Quibell, '92, Portage, MI
46 Kevin John Schemansky, '92, Sterling Heights, MI
47 Steven Craig Schmidt, '92, Wyoming, MI
48 Grant Franklin Solik, '93, East Lansing, MI
51 Brian Michael Binkowski, '94, Rochester, MI
56 John Charles Cerone, '93, Flossmoor, IL
57 Mark Peter Comensoli, '95, Kalamazoo, MI
58 Kevin Patrick Geesin, '93, Battle Creek, MI
59 Carrie Lynn Girmard, '94, Muskegon, MI
60 Loan Marie Marnefeld, '94, Jackson, MI
61 Amy Lu Brock, '95, Rapid River, MI
62 Darren Gerald Graczyk, '93, Bay City, MI
63 Jeffrey Jared Hughes, '96, Utica, MI
64 Jeffrey Michael Kukla, '94, Portage, MI
65 John Matthew Lester, '94, Mt. Clemens, MI
66 Annette Marie Martin, '94, Ithaca, MI
67 Kathleen Anne Miles, '95, Pleasant, MI
68 David Louis Sprague, II, '93, Battle Creek, MI
69 Michael Paul Zamora, '93, Dexter, MI
70 Michael Patrick Berels, '93, Jeddito, MI
71 Joseph James Bravata, '95, Portage, MI
72 Andrew Charles Close, '95, Park Forest, IL
73 Thomas Justin Comish, '96, Lawton, MI
74 Scott Lee DeMond, '94, Plainwell, MI
75 Nathan Forrest Feld, '93, Kalamazoo, MI
76 Rosanne Marie Forgione, '94, Allen Park, MI
77 Michelle Rene Grafund, '95, Dexter, MI
78 Rhonda Sue Hornak, '95, Kalamazoo, MI
79 Danylaemonica Edmundo Jamensons, '95, Detroit, MI
80 Stephanie Ann Madden, '94, Battle Creek, MI
81 Roy Edward Masters, Jr., '95, Watervliet, MI
82 Jeffrey James Kirschensteiner, '95, Lansing, MI
83 Michael Dennis LaPerre, '95, Troy, MI
84 Trent Jay Martin, '94, Ithaca, MI
85 Michael Gustin Rafail, '95, Plymouth, MI
86 Regina Barbara Rolke, '95, Tawas City, MI
87 Kim Marie Schell, '96, Madison Heights, MI
88 Denise Ann Schumacher, '96, Clinton Township, MI
89 Marianne Stampfer, '95, Montague, MI
90 William Joseph Tuer, '95, Devoson, MI
91 Michael Duane Wallace, '95, Muskegon, MI
92 Terri Denise Worthey, '94, Jackson, MI

RHO BETA

- 19 Alan Troy Swearingen, '93, Wilmington, OH
- 24 Emily Christine Adams, '93, Powell, OH
- 25 AnnMarie Bizek, '91, North Olmsted, OH
- 26 William Robert Bonnet, '92, Spencer, OH
- 27 Timothy Robert Dorst, '90, Tupper's Plains, OH
- 28 Monica Suzanne Smith, '92, Lorain, OH
- 29 Kathryn Marie Harvan, '93, Canton, OH
- 30 Michelle Kathryn Kanuch, '92, Bellefontaine, OH
- 31 Steven Elam Krebs, '92, Albany, OH
- 32 David Stratton Lees, '92, South Point, OH
- 33 Robert James Lindsay, '92, Dublin, OH
- 34 Melvin Horton Ridley, '91, Mansfield, OH
- 35 Stephanie Suzanne Smith, '92, West Chester, OH
- 36 Jerry Kevin Spradlin, '91, McGuffey, OH
- 37 Jason Martin Williams, '92, South Salem, NY
- 38 Roy Anthony Albertson, '93, Cambridge, OH
- 39 Roseanne Lee Cook, '95, Olmsted Falls, OH
- 40 Gregory Monteth Cordle, '94, Lancaster, OH
- 41 Beth Ann Diczynski, '95, Bedford Heights, OH
- 42 Shafiq Edward Far, '94, Amman, Jordan
- 43 Steven Ives Grimm, '95, Bethesda, OH
- 44 Brad Eugene Lance, '94, Youngstown, OH
- 45 Jonathan Craig Stuart Moore, '94, Athens, OH
- 46 Craig Edward Morris, '94, Berea, OH
- 47 Jeffrey Raymond Raines, '96, Chagrin Falls, OH
- 48 Kristi Lynn Skinner, '95, The Plains, OH
- 49 Melissa Lynn Vancio, '95, Athens, OH
- 50 Gary Y. '91, Niles, OH
- 51 Jennifer Anne Yonko, '94, Centerville, OH
- 62 Laura Lynn Boyer, '95, Columbus, OH
- 63 Matthew Willford Conover, '95, Chardon, OH
- 64 Benjamin Ronald Koehler, '95, Thornville, OH
- 65 Mark Alan Lyons, '95, Bowling Green, OH
- 66 Alan Michael Seibert, '94, Cuyahoga Falls, OH
- 67 William Hendrix Shultz, '91, '92, Mansfield, OH
- 68 Mary Beth Stahlner, '95, Waverly, OH
- 69 Sarah Elizabeth Tope, '94, New Philadelphia, OH
- 70 Roger Curtis Earwood, '95, Greenup, KY
- 71 Tariq Nadeem Faiz, '96, Bombay, India
- 72 Kent William Fuller, '96, Centerville, OH
- 73 Scott Thomas Goodwin, '95, Naperville, IL
- 74 Kristie Ann Hoge, '94, Delaware, OH

SIGMA BETA

- 45 Thomas Jay Beauchaine, '83, Milwaukee, WI
- 46 Paul James Peterson, '94, Wausau, WI
- 47 Rolin Miguel Bertran Vattuone, '93, Shorewood, WI
- 48 Stephen Edward Day, '94, Racine, WI
- 49 John Lynn Lange, '96, Oak Creek, WI
- 50 Kristine Marie Levinson, '96, Oak Creek, WI
- 51 Brian Edward Nowak, '95, Milwaukee, WI
- 52 Jodie Ann Lenzner, '95, Muskego, WI
- 53 Ken Rachel Hanson, '94, River Hills, WI
- 54 Matthew Stephen Hunt, '94, Waukesha, WI
- 55 Douglas James Wiegand, '93, Manitowish, WI
- 56 Steven Bairstow Syck, '96, Duluth, MN

TAU BETA

- 41 Abigail Lynn Eila, '93, Madison, WI
- 42 Travis Alan Diamond, '92, McKinney, TX
- 43 Gary Arthur Johnson, '92, Waco, TX
- 44 Jill Aiane Lancaster, '92, Tyler, TX
- 45 Roger Arthur Wende, '94, Little Rock, AR
- 46 Sidney Kambo Gicheru, '92, Irving, TX
- 47 Renee Grimes, '92, Dallas, TX
- 50 Michael Joseph Kurima, '93, DeSoto, TX
- 51 Michael Scott Morford, '93, Oklahoma City, OK
- 53 Christopher Charles Raps, '93, Oklahoma City, OK
- 54 Jennifer Lynn Revins, '94, Fort Worth, TX
- 56 James Edward Jones, '96, Oklahoma City, OK
- 57 Eric Marshall Mentz, '96, Littleton, CO
- 58 Nicole Teresa Jarvis, '96, Norman, OK

UPSILON BETA

- 2 Gary Robert Crossman, '94, Norfolk, VA
- 4 Ray Williams Kimball, III, '92, Bethesda, MD
- 23 Stephanie Karen Keller, '91, Buffalo, NY
- 25 Gregory Garner Williams, '92, Norfolk, VA
- 28 Jesse Lawrence Brittain, '91, '93, Jacksonville, FL
- 29 Chruvel Eugene Pavay, '92, Norfolk, VA
- 30 Robert Salvatore Reali, '92, Lawrenceville, NJ

- 31 Hardin Joseph Royall, III, '92, Portsmouth, VA
- 36 Robert James Dameron, '95, Virginia Beach, VA
- 37 Scott Paul Orser, '93, Norfolk, VA
- 38 Francisco Juan Alfonso Apodaca, '94, Springfield, VA
- 39 Derek Alva Bowers, '92, Virginia Beach, VA
- 40 Durwood Howard Davis, Jr., '93, Richmond, VA
- 41 Jonathan Michael Harrell, '93, Virginia Beach, VA
- 42 John Lawrence Harris, '93, Winchester, VA
- 43 Jason Denis Mehigan, '93, Williamsburg, VA
- 44 Darius E Pursell, '93, Virginia Beach, VA
- 45 Robert H Rosel, '93, Long Valley, NJ
- 46 Kennis Gerrod Wooten, '93, Eltrick, VA
- 47 Joseph John Fitzpatrick, Jr., '92, Chesapeake, VA
- 48 Frank Gil Murdy, II, '95, Lexington, VA
- 49 Susan Holly Snell, '94, Virginia Beach, VA
- 50 Thomas Edward Nast, '94, Gloucester Point, VA
- 51 Jason Alexander Sherry, '94, Martinsville, VA
- 52 John L. Ogile, '94, Chesapeake, VA

PHI BETA

- 6 Vasi D Germanski, '91, Washington, MI
- 44 Tim Vernon Smith, '92, Pontiac, MI
- 45 David Leonard Wisz, '93, Sterling Heights, MI
- 46 Jeffrey David Harris, '93, Troy, MI
- 47 Patricia Ann Schoenestein, '93, Rochester Hills, MI
- 48 Eric William Kaczor, '95, Rochester Hills, MI
- 49 Donald Raymond Hodges, Jr., '96, Troy, MI
- 50 Gerard Frank Adams, '93, Hamtramck, MI
- 51 Anthony Fabriczo Zolin, '94, Sterling Heights, MI
- 52 Lisa Anne Conner, '95, Shelby Township, MI
- 53 Catina Monique Mitchell, '95, Detroit, MI
- 54 Michael Gerard Schall, '93, Rochester Hills, MI
- 55 Sandy Rose McMath, '94, Lake Angelus, MI
- 56 David Perry Spinks, '94, Troy, MI
- 57 Steven Andrew Bronczyk, '96, Almont, MI
- 58 Gregg Joseph Lepine, '95, Sterling Heights, MI

CHI BETA

- 28 Stanley Johann Kenner, '93, Akron, OH
- 32 Travis William Bonnett, '93, Sandusky, OH
- 33 Glenn Michael Chavell, '93, Mentor, OH
- 34 Robert John Fossie, '93, Bristolville, OH
- 35 Mark David Heinzer, '93, Independence, OH
- 36 Douglas Martin Shumaker, '92, Malinta, OH
- 37 Douglas Anthony Barker, '94, Nonwolk, OH
- 38 Stephen William Brockmeyer, '94, Temperance, MI
- 39 Lynette Marie Browder, '93, Oak Harbor, OH
- 40 James Joseph Carns, '93, Strongsville, OH
- 41 Charlene September Howell, '93, Toledo, OH
- 42 Greg Allen Kemenah, '93, Risingsun, OH
- 43 Mary Rachel Kintworth, '94, Hinkley, OH
- 44 Amy Marie Roe, '95, Deerfield, MI
- 45 Jade Youssef Smady, '95, Oregon, OH
- 46 David Michael Thompson, '95, Mansfield, OH
- 47 Erik Amold Mayer, '90, Huber Heights, OH
- 48 Sanjay Kwatra, '93, Toledo, OH
- 49 James Michael Bianca, Jr., '95, Cleveland, OH
- 50 Ronald William Dawson, '95, Brunswick, OH
- 51 Ty Jason Oliver, '95, Fostoria, OH

PSI BETA

- 16 Christopher Paul Rouser, '91, Houston, TX
- 27 Steven Costas Elenniss, II, '93, Shreveport, LA
- 29 Shane William Gordon, '94, Houston, TX
- 31 Paul DeWayne Kelley, '91, Rankin, TX
- 35 Scott Bryant Gallahe, '92, Houston, TX
- 36 Gary A. Hallock, '76, Austin, TX
- 37 Susan Elizabeth Rinehart, '94, Friendswood, TX
- 38 Jack Scott Squires, '92, Seabrook, TX
- 39 Cheryl Lynn Tomsic, '94, Fort Worth, TX
- 40 Brian Christopher Timken, '93, Austin, TX
- 42 Miguel Ramon Corazao, '92, Houston, TX
- 43 Christopher Charles Bauschka, '94, Commerce, TX
- 44 Arthur John Brady, II, '90, Austin, TX
- 45 Michelle Corne, '96, Texas City, TX
- 46 Elizabeth Sarah Dickson, '94, Bryan, TX
- 47 Mario Garcia Garzes, '95, San Antonio, TX
- 48 Steven Blair Golab, '96, Portland, OR
- 49 Reginald Fredric Kelley, '91, '96, Texas City, TX
- 50 Stephen Andrew Kemper, '94, Houston, TX
- 51 William Andrew Nelson, '96, Missouri City, TX
- 52 Thomas Giffin Prior, '94, Houston, TX
- 53 Mark Davis Smith, '94, Austin, TX

- 54 Philippe Didier Stam, '96, Spring, TX
- 55 Benjamin Travis Woz, '95, Caldwell, TX
- 56 David Garrett Woods, '93, Baton Rouge, LA
- 57 Laura Beth Woolverton, '93, Houston, TX
- 58 Seung Mo Lim, '93, Benbrook, TX
- 59 Scott Wayne Clark, '93, Wichita Falls, TX
- 60 Stephanie Laura Knapp, '96, Beaverton, OR
- 61 Brad Philip Warren, '95, Victoria, TX
- 62 Jennifer Lynn Seaborn, '96, Spring, TX
- 63 Matthew Edward Carter, '93, Houston, TX
- 64 Shawn Karleton Howell, '87, Austin, TX
- 65 Justin Hamilton Carr, '93, Houston, TX
- 66 Jill Anne Reisman, '93, Miami, FL
- 67 Paul Anthony Sedlar, '94, Houston, TX
- 68 Michele Philip Singletary, '94, Austin, TX
- 69 Marwah Abdulaziz Al-Hadi, '95, Houston, TX
- 70 Jerrod Scott Allen, '96, Birmingham, AL
- 71 Brian Matthew Cole, '94, Red Oak, TX
- 72 Keith David Cramer, '94, Katy, TX
- 73 Jim Edward James, '96, Bartlesville, OK
- 74 Nathan M. Lefebvre, '95, Austin, TX
- 75 Angela Carolyn Reagan, '96, Katy, TX
- 76 Michael John Wieland, '94, Libertyville, IL
- 77 George Panteles Zolias, '95, Houston, TX

To: All members of Theta Tau

Official notice is hereby given that the following individuals are no longer members of Theta Tau:

- Laura Christine Bulgren, Zeta 829
David Ren Jenkins, Zeta 865
Cynthia Louise Rice, Zeta 837
Thomas Blair Rickett, Zeta 815
James Francis Abousead, Mu 1267
Lawrence Arthur Baird, Jr., Mu 1263
John Timothy Haskew, Mu 1247
Tiffany Love Ferguson, Xi 537
Joseph Edward Griebel, Xi 526
Raymont Si Ki Mui, Xi 527
Michelle Marie Parker, Xi 541
Catherine Ann Danks, Pi 914
Stanley Hyun Kim, Pi 879
Sarah Elizabeth Moore, Pi 880
William Timothy Mauney, II, Rho 980
Richard Allen Knudson, Jr., Sigma 780
Richard Clark Wohlsheier, Sigma 768
Ingrid Charmaine Lim, Tau 530
Christopher L. Vanover, Upsilon 939
Jodi Lynn Barnhill, Chi 981
Niall Andrew Iain Macleod, Chi 974
Brent Hunter Eiland, Kappa Beta 373
Daniel Bernard Gallet, Kappa Beta 364
Michael Scott Lowery, Kappa Beta 379
Scott Warren Shuttleworth, Kappa Beta 444
Ronny Wayne Ward, Kappa Beta 396
Jeffrey Lamar Williamson, Kappa Beta 405
Christopher Scott Gamble, Lambda Beta 243
Randy Lane Simpkins, Lambda Beta 249
Jonathan Eric Thompson, Lambda Beta 253
Patrick Gorham Walker, Lambda Beta 236
Stacy Ann Budzik, Pi Beta 15
Amy Christina, Pi Beta 27
Anthony Tate Askew, Tau Beta 25
Thory Phillips Bowen, Tau Beta 40
Michelle G. Everett, Tau Beta 33
Brian Keith Fielden, Tau Beta 48
Debra Lynn Kading, Tau Beta 7
Melissa Holly Miller, Tau Beta 29
Felipe Jose Nava, Tau Beta 47
Allen Joseph Pitts, Jr., Tau Beta 12
Michael John Sestak, Tau Beta 49

Each member should take due notice thereof, and govern himself accordingly.

In H and T,
Robert E. Pope, Grand Scribe

Chapter and Colony Addresses

*Alpha	515 Tenth Avenue, S.E.	*Omega	109 Kansas City Street	Sigma	Univ. of Wisconsin-Milwaukee
**C	Minneapolis, MN 55414-1926	W	Rapid City, SD 57701-2817	Beta	P.O. Box 784
	(612) 331-7931 & 7932		(605) 343-7768	C	Milwaukee, WI 53201-0784
*Beta	Route #1, Box 119	Gamma	Tompkins Hall, Room 103	Tau	Southern Methodist University
C	Houghton, MI 49931-9715	Beta	The George Washington University	Beta	Box 436
	(906) 482-7259	A	Washington, DC 20052	W	Dallas, TX 75275-0001
*Zeta	1935 Heatherwood Drive	*Epsilon	478 West Alexandrine		(214) 706-5149
W	Lawrence, KS 66047-2207	Beta	Detroit, MI 48201-1716	*Upsilon	Webb Center, Room 200
	(913) 841-0822 & 9867	G	(313) 832-4042	Beta	Old Dominion University
*Mu	P.O. Box AM	*Iota	4026 West McNichols Road	A	Norfolk, VA 23529
S	Tuscaloosa, AL 35486-1439	Beta	Detroit, MI 48221-3039		(3909) Bowdens Ferry
	(100) Smithwood Circle, House E	G	(313) 979-4816		Norfolk, VA 23508
	Tuscaloosa, AL 35487	*Kappa	P.O. Box 2983		(804) 423-8015
	(205) 348-4924	Beta	Mississippi State, MS 39762-2983	Phi	49 Oakland Center
*Xi	1633 Monroe Street	S	(56) South Park Estates	Beta	Oakland University
C	Madison, WI 53711-2021		Starkville, MS 39759	G	Rochester, MI 48309-4401
	(608) 256-6752		(601) 323-6184 & 6185		(313) 370-2027
*Omicron	508 North Dubuque	*Lambda	264 East 16th Street	*Chi	1420 Lawnview
C	Iowa City, IA 52245-6235	Beta	Cookeville, TN 38501-1302	Beta	Toledo, OH 43607
	(319) 338-4008	S	(615) 526-3823	G	(419) 536-6858
*Pi	Thornton Hall	*Nu Beta	160 North Hickory Street	Psi	CPE 3.162
A	University of Virginia	C	Platteville, WI 53818-2058	Beta	Petroleum Engineering Dept.
	Charlottesville, VA 22903		(608) 348-4456 & 9639	W	The Univ. of Texas at Austin
	(108) Maury Avenue	Xi Beta	Lawrence Technological Univ.		Austin, TX 78712
	Charlottesville, VA 22903-3010	G	21000 West Ten Mile Road		(512) 442-1571
	(804) 971-5892		Southfield, MI 48075-1058	*Syracuse University Colony	
*Rho	4200 Western Boulevard		(313) 383-8608	A	1105 Harrison Street
A	Raleigh, NC 27606	*Omicron	Univ. of Michigan-Dearborn		Syracuse, NY 13210
	(919) 828-2730	Beta	Room 226-ROC		(315) 443-1993
*Sigma	1946 Indianola Avenue	G	4901 Evergreen Road	Hofstra University Colony	
G	Columbus, OH 43201-1510		Dearborn, MI 48128-1491	A	Engineering Department
	(614) 291-3456 & 7966		(313) 563-0341		133 Hofstra University
*Upsilon	1322 West Cleveland	*Pi Beta	925 Lovell Street		Hempstead, NY 11550-1090
W	Fayetteville, AR 72701-1707	G	Kalamazoo, MI 49007		(516) 775-8065
	(501) 443-4393		(616) 383-3840		
*Phi	416 North Chauncey	Rho	P.O. Box 5884		
C	West Lafayette, IN 47906-2907	Beta	Athens, OH 45701-5884		
	(317) 743-2461, 2601, Anx: 2623	G	(614) 593-1571, 1585, 7155		
*Chi	1030 North Martin Avenue				
W	Tucson, AZ 85719-4946				
	(602) 881-8031 & 327-7718				

* Chapter House

** Each Unit's Region:

A - Atlantic; C - Central;
G - Great Lakes; S - Southern;
W - Western.

Appointed National Officers

ATLANTIC REGIONAL DIRECTOR

Michael D. Livingston, 'B '92
1702 Swann Street, NW B: (202) 767-2937
Washington, DC 20009

CENTRAL REGIONAL DIRECTOR

Glen A. Wilcox, 'Q '90
1416 Tremont Street H: (319) 277-3652
Cedar Falls, IA 50613-3916 B: (319) 292-8539

GREAT LAKES REGIONAL DIRECTOR

Matthew J. DeLoe, 'OB '92 H: (313) 471-3401
30285 Timberidge Cir., #302 B: (313) 585-6490
Farmington Hills, MI 48336 Fax: (313) 585-2531

SOUTHERN REGIONAL DIRECTOR

Lee C. Haas, 'P '62
812 Merwin Road H: (919) 851-6952
Raleigh, NC 27606-2645 B: (919) 543-4933

WESTERN REGIONAL DIRECTOR

Halbert D. Church, Jr., 'X '80
5600 West Placita Del Risco H: (602) 743-3547
Tucson, AZ 85745-9581 B: (602) 794-7269

ASSISTANT WESTERN REGIONAL DIR.

Richard W. Wiley, 'Z '93
1935 Heatherwood Drive H: (913) 841-0822
Lawrence, KS 66047

ARCHIVIST

Lawrence F. Feldsien, 'A '62 H: (612) 484-9055
5116 North Alameda Street B: (612) 869-2436
St. Paul, MN 55126-1203 Fax: (612) 869-1619

CHAPTER FUNDRAISING CHAIRMAN

Steven M. Freedman, 'P '92
309 West Freemason St., #2 H: (804) 423-2061
Norfolk, VA 23570-1265 B: (804) 677-4257

PROFESSIONAL DEVELOPMENT DIRECTOR

Janice L. Witala, 'O '90 H: (312) 477-7226
2933 Sheridan Road, #1408 B: (312) 637-2000
Chicago, IL 60657 Ext. 4274

ALUMNI PROGRAM DIRECTOR

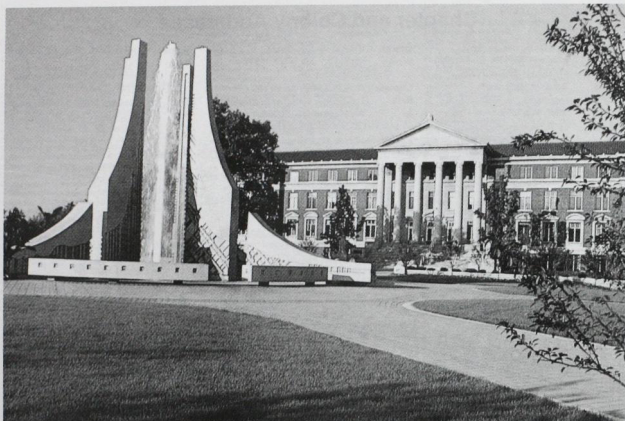
Lance L. LeTallier, 'Q '89 H: (605) 787-6164
11408 Midland Road B: (605) 343-6102
Black Hawk, SD 57718 Fax: (605) 343-7159

ALUMNI HALL OF FAME DIRECTOR

Stephen J. Barth, 'AB '67 H: (812) 663-7288
347 East Washington Street B: (812) 663-2177
Greensburg, IN 47240-1723 F: (812) 663-7906

DETROIT DIVISION COORDINATOR

Justin G. Wiseman, 'EB '94
2128 Buckingham H: (313) 383-8608
Lincoln Park, MI 48146 B: (313) 351-5773



**The Engineering Mall at Purdue University, where Phi Chapter hosted
the 1993 National Conference.**

Theta Tau

Professional Engineering Fraternity
655 Craig Road, Suite 128
St. Louis, MO 63141-7168

Forward & Address Correction

NONPROFIT ORG. U.S. POSTAGE PAID SYRACUSE, NY PERMIT NO. 425
--

Theta Tau Archives
c/o Mr. Lawrence F. Feldsien
5116 North Alameda Street
Saint Paul, MN 55126-1203