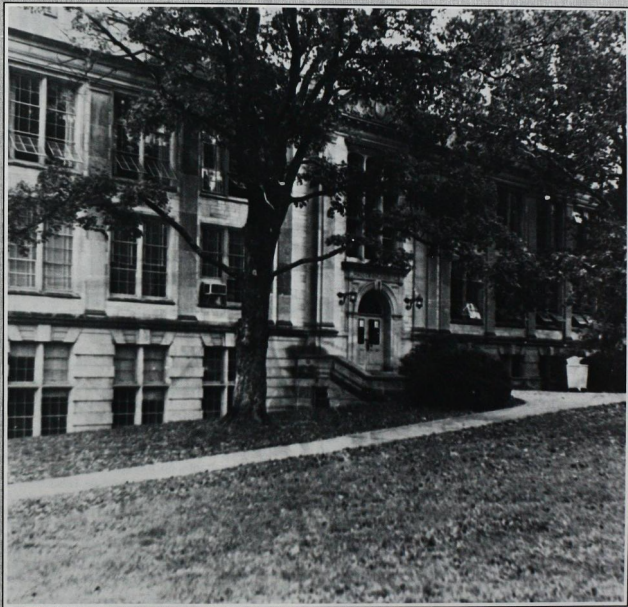


# The **GEAR** of Theta Tau

Volume LXX, No. 1

Fall, 1983



1983 National Conference:  
Fayetteville, Arkansas



# The Gear Of Theta Tau

Volume LXX, No. 1

Arthur T. Petrzela, Editor in Chief

Fall, 1983

## NATIONAL OFFICERS

### Executive Council

A. Thomas Brown, Grand Regent, M '77 (Capt.)  
4444 South Landing Drive  
Marietta, GA 30066 404/928/4243

John W. Catledge, Grand Vice-Regent, KB '75  
Freepoint Gold Co., Mt. City, Star Rte.  
Elko, NV 89301 H: 702/738-6538  
B: 702/738-9221

Robert E. Pope, Grand Scribe, Z '52  
13 Sona Lane  
St. Louis, MO 63141-5984 H: 314/872-3234  
B: 314/997-3234

Donald H. Slavik, Grand Treasurer, E '78  
777 E. Wisconsin, Suite 2200  
Milwaukee, WI 53202 H: 414/355-8771  
B: 414/271-0900

Craig S. Huff, Grand Marshal, AB '76  
5403 Third Kenmore Road  
Indianapolis, IN 46226 317/545-6546

Timothy A. Sandoval, Grand Inner Guard, X '79  
P. O. Box 55  
Henderson, NV 89015 B: 702/565-8901

Randall J. Scheetz, Grand Outer Guard, O '79  
127 Lovejoy  
Waterloo, IA 50701 319/236-2286

Bradd D. McCaslin, Student Member, X '83  
11214 N. 36th Drive  
Phoenix, AZ 85029 602/938-1592

Stephen J. Barth, Delegate-at-Large, AB '67  
347 E. Washington Street  
Greensburg, IN 47240 812/663-7288

### Regional Directors

Steve F. Kessler, Central, O '80  
696 Fox Avenue, #226  
Lewisville, TX 75067 H: 214/221-5812  
B: 214/462-5442

Dean W. Bettinger, Eastern, T '81  
13 Sona Lane  
St. Louis, MO 63141-5984 H: 314/872-3234  
B: 314/997-3234

A. Fort Gwinn, Southern, AB '75  
206 Jackson Circle  
Tulahoma, TN 37388 615/455-5302

Dale G. Larsen, Western, O '78  
1433 Tenth Street  
Greeley, CO 80631 303/356-0721

## THE GEAR OF THETA TAU

Arthur T. Petrzela, Editor-in-Chief, O '79  
P. O. Box 2810  
Iowa City, IA 52244 H: 319/351-5895  
B: 319/353-3229

### Archivist

Joseph W. Skovholt, A '31  
1430 Raymond Avenue  
St. Paul, MN 55108 612/646-1191

### Historian

Charles W. Britz, A '33  
662 Cromwell Avenue  
St. Paul, MN 55114 612/423-3015

### Central Office

9974 Old Olive Street Road  
St. Louis, MO 63141-5984 314/997-3234

Robert E. Pope, Z '52  
Executive Secretary H: 314/872-3234  
Dean W. Bettinger, T '81  
Extension Director & Chapter Consultant H: 314/872-3234



# ALUMNI EXTENSION

## CONTENTS

Is Your Chapter Professional?	3
A Special Triathlon	4
Paul Borel, Editor	5
ENCORE!	6
Foran	7
NATIONAL NEWS	
New Directory	8
'83 Conference	8
New Central Office	8
Extension Update	9
New Employee	9
Alumni News	10
Additions to Membership	11
Communication	12
In Memoriam	13
Professional Directory	15
Position Wanted	15
OT Library	15
Chapter Directory	15

## CREDITS:

Photos: cover, University of Arkansas; p. 3, Art Petrzela; p. 4, Laurie Weiss; p. 5, Paul Borel; p. 6, ENCORE Consultants; pp. 8 & 9, Bob Pope. Temporary Assistant Editor, Karol Sole, O '83

The GEAR is the official publication of Theta Tau, National Engineering Fraternity and is published fall and spring. The magazine is an educational journal devoted to matters of Fraternity interest and is sent at no cost to alumni whose addresses are on record. Send change of address to 13 Sona Lane, St. Louis, Mo. 63141. The GEAR is printed by Compolith Graphics and Maury Boyd & Associates, Indianapolis, Indiana. Third class postage has been paid at Indianapolis, Indiana.

**CFFA**  
1883★1983  
CENTENNIAL

# IS YOUR CHAPTER PROFESSIONAL?

by Charles W. Britzius, A '33  
Historian  
Past Grand Regent

This subject is addressed as it relates to Theta Tau Fraternity and its Professional Development programs. It is the feeling of the writer that our chapters can and should fill a need that exists at most universities. I refer to organized courses on a senior class level to inform graduates about professional aspects of the engineering career they are about to begin. Universities have been slow to respond to requests for these courses indicating that the freshman orientation and daily contact with faculty is filling the need. Where courses have been offered, the subject has been primarily about ethics, which is a good start, but additional information should be presented.

It might be well at this time to identify technical and professional activities. Technical activities are those primarily educational and related to a specific discipline. Professional activities are those of common interest to all engineers such as ethics, legislation, registration, salaries, fees, unionization, employment conditions, etc. Engineering education is a concern of both.

The engineering profession differentiates between technical and professional activities as evidenced by the way in which it is organized. There are technical societies (ASCE, IEEE, ASME, etc.) and the professional societies (e.g. NSPE). There is also another group identified as engineers' clubs whose activities are primarily social and whose membership requirements are quite lax. There are also scientific societies such as the American Concrete Institute, the American Association of Asphalt Paving Technologists, the American Society for Testing and Materials, etc.

The technical societies carry on professional programs in varying degrees depending on their concern about tax status, primarily, but also about the unity of the engineering profession. Some think that NSPE should be the unity organization. A C(3) IRS nonprofit

classification is the one preferred by most of the technical societies but it limits severely activity in the legislative field. NSPE has a C(6) classification which allows it to carry on a legislative program. The penalty of this classification is that contributions other than dues are not tax-exempt. This is important because some technical societies carry on extensive research programs that are supported by contributions from those to whom tax deductibility is important.

Recently the American Association of Engineering Societies (AAES) has been organized to replace the Engineers Joint Council. Its objectives are commendable, but have little grass roots support and its C(3) tax-exempt classification can cause problems as discussed.

Theta Tau Chapters and their professional activities should support NSPE and its student Chapters where they exist, and where they do not, they should promote and help them get organized. With the assistance of local tech commissions, the appearance of speakers discussing professional subjects should be a major objective. Our chapters should not compete with the student technical societies in having programs about technical projects and activities in which only one group of members is interested.

Speakers on professional subjects are available. A good source is the local alumni, especially those in tune with their state professional society. A request can be made directly to the Executive Director of the State Society for a speaker. Another option is the State Consulting Engineers organization through its Executive Director. From them you will hear of options for employment other than that in industry, education, and government.

I repeat for emphasis what I said — Theta Tau is a "professional" engineering fraternity. Let it be one not only in name.





# A SPECIAL TRIATHLON



In the 1970s, it was the marathon. In the 1980s, it's the triathlon.

The fashionable form of exertion for people who really want to exert themselves is a fiendish blend of swimming, bicycling, and running.

The first triathlon was held in Hawaii in 1978. It was called the Ironman competition, and only 12 people finished it. But it captured people's fancies, and the Hawaii Ironman is now a nationally televised event.

Meanwhile, pared-down versions of the triathlon have been started on the mainland. One of the toughest is the Santa Barbara Triathlon.

The triathlon started with a 1 1/4 mile ocean swim, a 13 mile run, and then a 56-mile bicycle race. 289 people did the whole thing, and another 74 relay teams finished.

The motto "Everyone is a Star" was adopted for the Santa Barbara Triathlon. The attempt is just as important, if not more important, than winning. As the Special Olympics oath says:

"Let me win, but if I can not win, Let me be brave in the attempt."

Entry fees will help benefit the local Special Olympics, which in turn is providing some of the volunteers who make the triathlon work.

In 1981 the 1st Santa Barbara Triathlon collected \$4500 in entry fees, contributing \$1200 at the annual kick-off dinner for the new Special Olympics season. In 1982 the 2nd Santa Barbara Triathlon collected \$10,000 and donated \$5000 - both years without sponsors. 1983 will be even better, having acquired a sponsor for over \$5000.



A little rain - or even a lot of it - was not about to stop most of the contestants in last September's sec-

ond annual Santa Barbara Triathlon.

"Despite the rain, it's great," said Laurie Jane Weiss, Delta '78, director of the event. "It's been a very, very unbelievable day."

It all started one day when she came across an application for the first Santa Barbara Triathlon. The race was 6 months away and her goal was just to finish. After 2 months of training, she got sick and her doctor recommended that she quit training for the triathlon. She decided to volunteer her time instead. When the triathlon organizer left town, and she took over to prevent it from being cancelled.

"I started organizing this last March," said Weiss, a biomedical engineer who had previous experience setting up fencing tournaments. "It's one of 100 triathlons on the West Coast this summer."

Organizing such an event requires a lot of work. Laurie started in March for the race to be held in September. In the beginning a couple of hours a day was sufficient. In September it became a full time job. In

the evenings she would stuff envelopes, answer replies for entry forms, process entrants, and talk to people about general information, course characteristics, and training methods.

Weiss has always been active in sports and became very involved in fencing while in college, and continued to fence after graduation, in Denver. It was not just an individual sport to her. The tradition, grace, discipline, and skill were what attracted her to this sport and made it appealing. While in Denver, she was able to make the commitment to a strict training schedule. That, combined with the support from her coach, succeeded in taking her to the U.S. National Championships to compete in Womens' Individual and Team Foil and Womens' Sabre.

Laurie's present position is with General Electric Medical Systems in Northern California at the Rancho Cordova site. She is one of two manufacturing engineers working on Transducer Manufacturing and Development for Ultrasound Medical Scanners.







**Paul Arnold Borel, Z '34**, is the editor of the CIRA Newsletter, a quarterly publication of the Central Intelligence Retiree's Association.

He received a B.S.C.E. from the University of Kansas, an M.B.A. from the Harvard Business School, an M.A. in International Administration from Columbia a J.D. from George Washington University.

His professional work includes engineering and management analysis with Sun Oil Company, Black and Veatch, Consulting Engineers, and Phillips Petroleum Company.

He was on active duty in WWII as a military government and civil affairs specialist in the European Theater, including the Potsdam and Paris Peace Conferences. From 1947 to 1972, he was a career official of the Central Intelligence Agency.

Since then, Borel has been a Regent of Capital University, a member of the Governing Board for the Northwest Center for Community Mental Health, Chairman of the board of Jules Borel & Company, Kansas City, MO., and a trustee of the Holy Trinity Lutheran Church, Falls Church, Virginia

## PAUL BOREL, EDITOR

February 18, 1983

Dear Art:

*Am a bit puzzled as to why any of your readers would have any interest in me, but am enclosing material as you requested. As you can see, I strayed from engineering rather early in my career - helped in no small part by WWII. I have, however, never regretted my engineering training and have valued over the years a continuing association with colleagues of those days.*

*If I can be of further help, please let me know. Parenthetically, it was 50 years ago that I was editor-in-chief of the **Kansas Engineer**.*

*All the best,  
Paul*

Excerpts from an unpublished account of a recent trip to Switzerland in the company of my wife Miriam, daughter Nancy and her husband John Ellis.

### THE MATTERHORN: VIEW FROM A ZERMATT GRAVESIDE

Its brooding silence speaks more  
loudly than

The crashing crushing slide of rock  
and ice

Of those who dared and failed since  
time began

And calls to us who've yet to pay the  
price.

**Flowers for Madame and others:** The enchanting European custom of seemingly growing flowers everywhere is still much alive in Switzerland. One is left to wonder who takes care of them all. No Japanese gar-

dener (California style) can be seen. Yet houses and business offices not only are surrounded by beautiful ground cover, but floral offerings are elevated to eye level and beyond by using window flower boxes. These are so numerous their absence on any building seems exceptional. As has been said, happy is he who hath the power to gather wisdom from a flower.

**Looking back:** Rene and I made our way leisurely into courtyard of No. 40 Gasometer Strasse. We had been neighbors nearly 70 years ago in this city-owned apartment complex (built specifically for families with children). The neighborhood was still well maintained, but tenants were now predominantly families of the foreign work-force (20% of the population). The inner court, which once had been my universe and huge, now seemed small, the more so because of the extensive framework of the jungle gym. It was in this place I learned not to give in exchange for my friend's much admired pocketknife my father's fine watch. From there, too, had I run at the sound of the military band to follow recruits to the Caserne, there to exchange cake for Army black bread. Years later, when in my teens, Rene and I had tackled a few of the minor peaks. References to Rigi, Pilatus, Uri Rotstock and Engelberg evoked warm memories of climbs, of resting places, of the glow of hillside signal fires celebrating the creation of a confederacy dating from 1291. And when the rains came, it was jass we played in the shepherd's hut where the scent of hot chocolate permeated the air.

**Church bells:** The Sunday before our return home we woke to the peal of church bells, a lovely sound, calling parishoners to worship. Relatively few respond. Attendance is poor by American standards (one friend explained that the Swiss take their religion seriously, but not their church). By and large the clergy is still paid by a special levy collected by the state. A positive action is required by the citizen to avoid payment. We made our way to Zurich's French Reformed

(Paul Borel Continued)

Church, where attendance is better than average, for this church serves also as social center for those Swiss from the French-speaking part of the country who now inhabit Zurich. Thus it was in 1910, when my parents were married in this church, and where, two years later, I survived the rite of baptism.

## THE ROOFS OF NEUCHATEL

Thereunder lived and died through centuries past  
Those of my blood who came before:

Teachers, farmers, makers of clock and watch,  
Machinists, lawyers, cantonal functionaries,  
The bourgeoisie of this once princely realm;  
What would they say if they but spoke today?

# ENCORE

Colonel Carl Y. Farrell, USA (Ret.) began his career at the Colorado School of Mines, with a degree in Petroleum Engineering Production. From 1932 to 1960, he held various positions with the U. S. Army. The majority of his experience has been with the Army Corps of Engineers. He has served the Army in Australia, Japan, Alaska, and Texas. He has over 50 years of experience in engineering, construction, and maintenance of many military and industrial facilities. These include military posts and air fields, a shell forging plant, pipelines, marine terminals, steam heating and electrical generating plants, canals, roads, utility distribution, hydro-electric, dredging, harbors, tank farms, railroads, communications, sewage treatment, and hospitals.

After World War II, he attended the Army War College, and received his M. S. there.

In 1960, Colonel Farrell retired — only to begin a second career as senior vice-president for business and development at Santa Fe-Pomeroy Inc., an international engineering and contracting company. Then in 1973, Colonel Farrell retired again — and began a third career as an independent consultant. Now, the colonel is launching yet another career, as chairman of ENCORE Consultants Registry Inc., a new organization designed to tap the considerable skills of America's retired and semiretired executives.

ENCORE Consultants Registry, Inc., a new and unique concept, is specifically formed and organized to provide a registry and referral service for independent executive consultants. The firm, founded early in 1982, is based in Palo Alto, California, and operates as a medium for providing industry, government agencies, and private enterprise with Consultants having specialty skills, expertise, and experience. ENCORE was first conceived for retired military personnel; it has now been expanded to encompass all retired or semiretired Executive Consultants, military and non-military.

To answer your specific questions: a. The only service ENCORE intends to provide is as stated in our brochure referred to above: referral of retired or semiretired executive and professional personnel. b. ENCORE is not affiliated with any other organization. c. Registered members, are not employees of ENCORE, are screened by ENCORE's qualifications review board to confirm validity of applicant's submitted data, and to maintain ENCORE's established standards of professional excellence and integrity before acceptance.

In regard to myself, I am enclosing a copy of my ENCORE resume which will provide you a broad-brush history of my past 50 years.

Regarding my years at the Colorado School of Mines, I belonged to Sigma Phi Epsilon, Blue Key, and Press Club. I was Editor of the Oredigger, school paper, and the Mines Handbook. I served on the Student Council, Athletic Council, and Interfraternity Council.

I trust the above plus enclosures will provide sufficient background needed for your article.

In H & T,

Carl Y. Farrell, Gamma '33



Dear Brother Petzelka:

Thanks for your recent letter regarding information for an article you contemplate for the Spring '83 GEAR.

# FORAN

(ENCORE! Continued)

The idea for ENCORE was born in a conversation late in 1981 between Colonel Farrell and Earl T. Van Geem, a friend and former colleague from Santa Fe-Pomeroy. Both were retired. Both had tried their hand at consulting. And both felt that a major problem for retired executives anxious to consult is that a retired person has no way to market his expertise. He only gets assignments from his former company.

ENCORE Consultants, established late last year in Palo Alto, Calif., was their solution. While there have been other organizations to get retired executives into consulting jobs, ENCORE is the first such organization to be open to a broad group of consultants who are paid for their efforts.

The ENCORE concept, now in effect, is to register through its resources Independent Consultants ranging from A to Z: Agricultural specialists to construction specialists to engineers, of all disciplines, to Zoologists. To meet the Executive Consultant classification an individual must possess a specialty skill by virtue of education and experience, or just experience that meets ENCORE's established standards. An Independent Consultant of any discipline may register with ENCORE at no cost.

Retired and semiretired executives, scientists, and engineers who meet the criteria of sufficient education, professional reputation, or hands-on experience, can register with ENCORE free of charge, with their name and resume to be stored in the company's computer bank. Clients in need of people with specific skills will be forwarded the appropriate resumes. They will select a consultant and then negotiate fees, based on the individual registrant's demands and ENCORE's 10% referral fee. The company gets its expert, and the would-be consultant gets a chance to expand what contacts and affiliations he might have made before retiring.

Marketing will be aimed at U.S. government agencies, private industry, and foreign governments, with particular attention to the Agency for International Development (AID) and the World Bank. ENCORE's objective is to be recognized world wide as the source for qualified professionals of the Executive Consultant category, that clients may contact for assistance with confidence and trust. Clients will be solicited through advertising, direct mail, and some old-fashioned doorbell ringing in Washington.

"We don't expect to make a lot of money out of this," Colonel Farrell says, "but we've already made as much money as we need. Instead, we think of it as a way to help retired people—and to help the country, too."

Interested Independent Consultants and clients may obtain further information on ENCORE by writing or calling ENCORE Consultants Registry, Inc., 1900 Embarcadero Road, Suite 111, Palo Alto, California 94303 (415) 857-1711. Those outside California may call toll free (800) 222-1900.

Jeff Foran, Xi '80, is the subject of a unique liver cancer experiment that could mean the difference between life and death for many liver cancer patients.

Foran, 24 years old, is the first person in the world to have undergone liver hyperthermia, in which his liver was treated with heat in an attempt to kill cancer cells.

In the hyperthermia treatment, the temperature of Foran's liver was raised to more than 108 degrees in an attempt to kill the cancer that had spread there. For four hours Jan. 31, Joseph L. Skibba, associate professor of surgery at the Medical College of Wisconsin, pumped Foran's heated blood into his liver in a surgical procedure.

Heat kills cancer cells at lower temperatures than normal cells, preventing cancer tumors from growing and crowding out normal tissue.

"I have really been through hell in the last 13 months," said Foran, a mechanical engineer who worked in corporate sales at the Allen-Bradley Co. He has not gone back to work because he is receiving radiation treatment on a melanoma that has returned to his head, on the circular skin graft which was taken from his leg.

He jokes: "Now, when my leg itches, I have to scratch my head."

Even if the liver cancer is defeated, the melanoma still poses a threat to other organs, Skibba said.

"Liver cancer is 100% fatal, 100% of the time," Foran said, and the four cancer physicians he had been seeing held out little hope. "They all told me there was nothing they could do and nothing I could do."

When he mentioned seeking whole-body hyperthermia treatments in Jackson, Miss., one of the physicians told him hyperthermia was quackery.

"I looked at him and said to myself, 'You're the quack!'" Foran said.

"The truth is, they don't know what causes cancer and conventional chemotherapy and radiation treatment only continue the physician's long list of failures," he said. "I chose to go with the experimental treatment because chances of it working are a lot better than conventional treatments."

"Our outside shot is that the heat that kills the liver cancer would immunize the rest of his body," Skibba said. In some unknown way, Skibba said, animal research shows that when cancer tumors are killed in one part of the body with hyperthermia, tumors in other parts of the body decrease in size.

"The statistics are frightening," Foran said. "One out of three persons will get cancer and 500,000 persons will die this year from cancer. I hope not to be one of those. Most people don't realize what a problem cancer is until they have it. The public has to realize how little science knows about cancer."

"I don't ask 'Why me?' when you realize how many people get cancer. I ask, 'Why not me?' I only hope Dr. Skibba has worked a miracle. But, I'm realistic."

(Excerpted from the Milwaukee Sentinel.)





## National News

### NEW DIRECTORY

Good news to all alumni! . . . The fraternity has responded to much alumni demand by authorizing the preparation of a revised directory of alumni. The last such directory was published almost five years ago. This new, full information directory, to commemorate our 80th anniversary, will be a valuable, personal, and professional reference volume for alumni.

The directory will list alumni alphabetically with each entry to indicate name, class, chapter, address, and home telephone, and will include business or professional information with address, and telephone. Two complete indexes will follow the alphabetical listings, one arranged geographically by towns within states, and the other arranged by chapter.

The Bernard C. Harris Publishing Company, Inc. has once again been selected as the official publisher. Recognized as the oldest and largest exclusive publisher of alumni directories, it has completed more than 650 alumni directories over the last two decades for fraternities, colleges, and universities. The project will be undertaken at virtually no cost to Theta Tau. Harris has contracted to compile, publish, and market the directory, financing the operation solely through the sales of individual directory copies to alumni only.

Updated material will be derived from brief questionnaires mailed to alumni in March and April of 1984 and followed up by telephone in the summer for research and verification of the directory information. At that time, alumni will be able to place an order for a copy of the directory. Only enough directories to fill these pre-publication orders will be printed, and circulation will be restricted to alumni. Release of the directory is currently scheduled for late November or December of 1984.

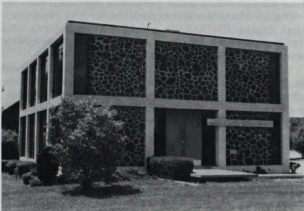
### '83 CONFERENCE

Upsilon Chapter is the host for the 1983 National Conference held at the Fayetteville Hilton, 70 North East Avenue, Fayetteville, AR 72701. The Tenth Biennial Convention was also held in Fayetteville in 1931. In addition, Upsilon Chapter hosted the Southern Regional Conferences in 1963 and 1979. Although the Fraternity has been meeting annually since 1980, this is the first such meeting designated a "National Conference" in line with the action of the Convention last summer. The Conference is relatively informal with emphasis on workshops, seminars, and regional meetings. Legislative activity is limited. The even-

numbered year national meetings will continue to be designated "Biennial Conventions". The scheduling of this Conference, its relatively central location, and the natural beauty of the area, should make attendance especially attractive. Alumni and their families are encouraged to include the Conference as part of their vacation plans.

Registration is Thursday noon, August 18, with the first session at 1 P.M. The Conference is expected to adjourn by noon, Sunday, August 21, with the Executive Council meeting until midafternoon.

### NEW CENTRAL OFFICE



Theta Xi Memorial Headquarters in which Theta Tau is now renting space for its Central Office.

We are pleased to announce that the Central Office has relocated into new quarters as of June 1, 1983. After twenty years in the Executive Secretary's home, the Central Office is located in a building approximately 1/4 miles away, occupying some office space in the Theta Xi Memorial Headquarters. Theta Xi is a general fraternity which is leasing a small part of its headquarters building to Theta Tau. The office space is about 325 square feet, which gives an increase of 50% over that available previously. The space is comprised of an office for the Executive Secretary and the Extension Director; a larger office for the secretaries and computer equipment which was recently purchased; a duplication room with file and storage space; and a portion of the basement for general storage.

The new address and phone number are listed on the inside front cover. Mail and phone calls directed to the previous site will continue to be received. Therefore, no communications problems should arise.

## EXTENSION UPDATE

In the previous GEAR, announcement was made about the approval of funding for a Membership Development Coordinator, there was a feature article on "Extension Mechanics," and the magazine theme was Extension. This issue brings news of a newly appointed Extension Director/Chapter Consultant. In addition, we intend to bring you regular updates on our progress in extension. At this time, the only colony is the Iowa State University Colony. We hope to bring you news of others in the near future. Some efforts were already underway before this major emphasis on extension began. Others are just picking up steam. We have informally identified universities and colleges which we feel would be good additions to Theta Tau. Some of these are inactive chapters.

There are two lists. One list is of places for which we have potential contacts to aid us in extension work.

---

### We challenge you to become contacts or participants, and to add to the list.

---

The other list is of inactive chapters for which we have not identified potential contacts.

The inactive chapters for which we have no identified contacts are:

Epsilon—U. of California-Berkeley, CA  
Eta—MIT, Cambridge, MA  
Theta—Columbia, New York, NY  
Kappa—Illinois, Urbana, IL  
Nu—Carnegie-Mellon, Pittsburgh, PA  
Delta Beta—U. of Louisville, Louisville, KY  
Zeta Beta—Utah State, Logan, UT  
Those inactive chapters for which we have identified potential contacts are:

Lambda—University of Utah, Salt Lake City, UT  
Pi—U. of Virginia, Charlottesville, VA  
Gamma Beta—George Washington U., Washington, DC

Theta Beta—U. of Washington, Seattle, WA  
In addition, we have identified potential contacts for the following universities:

Auburn—Auburn, AL  
U.C.L.A.—Los Angeles, CA  
U. of Cincinnati—Cincinnati, OH  
Cleveland State—Cleveland, OH  
Georgia Tech—Atlanta, GA  
Louisiana State U.—Baton Rouge, LA  
U. of New Mexico—Albuquerque, NM  
New Mexico Institute of Mining and Technology—Socorro, NM  
U. of New Orleans—New Orleans, LA  
Northern Arizona U.—Flagstaff, AZ  
Northwestern U.—Evanston, IL  
U. of Oklahoma—Norman, OK  
U. of South Alabama—Mobile, AL

U. of Texas-Arlington—Arlington, TX  
Tulane U.—New Orleans, LA  
Virginia Polytechnic Institute—Blacksburg, VA  
U. of Wisconsin-Milwaukee Campus—Milwaukee, WI

We publish this list to challenge readers to become contacts or participants, and to challenge others to add to the list. We are encouraging questions and comments to be directed to John Catledge, Grand Vice-Regent, who is the Extension Coordinator for this biennium.

## NEW EMPLOYEE



Dean Bettinger

Dean W. Bettinger, Tau '81, will become the second member employed full time by the Fraternity when he assumed the position of Membership Development Coordinator in late May. The appointment, which will last for a period of 12 to 15 months, now has a different title: Chapter Consultant and Extension Director. The new title more accurately reflects the duties of the position. After the summer in the Central Office, he will devote most of his time to traveling on behalf of the Fraternity, with special emphasis on extension and aiding chapters with membership recruitment.

Dean was initiated in January, '78, and subsequently served his chapter in a number of positions, including Regent, Vice-Regent, Treasurer, Marshal, Inner Guard, Alumni Relations Chairman, Rush Chairman, House Steward, assistant Professional Development Chairman, and assistant Pledge Trainer. He has attended the last four Conventions, and was named Outstanding Delegate in 1981. He is currently the Eastern Regional Director.

Professionally, Dean received his B.S. and M.S. degrees in Computer Engineering from Syracuse University. He is a member of Eta Kappa Nu, Tau Beta Pi, IEEE, and ACM. He has worked as a Graduate Teaching Assistant for Syracuse University and as an Applications Programmer for the IBM Corporation.

The Fraternity is fortunate to have Dean aboard as it takes a big step forward with this new position.



## HOLLAND

Brother Steve Holland, MB '75, was appointed assistant head of the Computer Science Department of the General Motors Research Laboratories on April 1, 1983.

In his new post, Holland will oversee research on computer vision, robotics, natural language understanding, expert systems, programming efficiency, and engineering and scientific software.

A member of the GMR staff for 13 years, he holds a B.E.E. degree from General Motors Institute and an M.S. in computer science from Stanford University. The latter degree was awarded in 1975.

Holland received the Research Labs' Charles L. McCuen Special Achievement Award in 1982 for developing CONSIGHT, a vision-guided robot system. He was awarded the Arch T. Colwell Award from the Society of Automotive Engineers in 1980 for a technical paper on "Grid Circle Analyzer—Computer-Aided Measurement of Deformation."

Holland is a licensed Professional Engineer, a Certified Manufacturing Engineer in the field of Robotics, and holds a Certificate in Data Processing. He is a member of Robotics International of the Society of Manufacturing Engineers, the Association for Computing Machinery and its Special Interest Group on Artificial Intelligence, Tau Beta Pi, and Sigma Xi.

## HOHENSIL

Dear Brethren,

I have two Theta Tau badges in excellent condition. The first was lost before graduation and a replacement ordered. The one that was lost was soon found near the campus entrance but was not returned to Sigma Chapter House for a number of years, as the lady who found it did not know how to contact the "blacksmith organization"! The engraving identified the owner. Please advise if you can make use of one of them for the benefit of the Fraternity, especially Sigma Chapter, if returned to the Central Office.

Our Golden Wedding Anniversary was celebrated by our own family on August 31, 1982 when Alma (Donley) and I had 50 wonderful years together. We have one son, five grandchildren, and two great-grandchildren. That is the result of a Sigma brother arranging a "blind date" for me for the spring formal dinner dance of 1930.

I have now been retired 7 years from Ohio Power Co. of the AEP system, after 40 years as Automotive Engineer concerned with every type of mobile work equipment.

Yours in H&T,  
Carl H. Hohensil, Sigma '31

## DOUDS

Dear Bob,

Enclosed you will find my 1981-82 Donations to the Fraternity. I apologize greatly for the lateness of them! I am currently moving to my new address, and while doing the inevitable cleaning and packing, I found my donation letters. It's almost time for the 1982-83 drive, but I felt it best to at least contribute this year rather than be left "out in the cold" so to speak.

The card pretty well tells the story. A friend with whom I graduated from Ohio State became the director of The Recording Workshop, which is a 4-week school in Audio Recording. He has had me doing guest lecturing there since late 1980, but he finally persuaded me to begin spending more time there in early 1982. Last month I was offered a free-lance contract, so this has become a full-time job for me at the present. The contract has leave of absence clauses in it, so that I may continue to do free-lance recording work in the Columbus area, as well as continue my touring as the bassist with the Carmen Cavallaro Trio. This is the best of all possible worlds as far as I'm concerned. I have to say that I'm the happiest with my work (career environment) that I've been in my whole life! Things could not be much better.

In any event, I thought I should enclose this quick little note to bring you up to date and also to give you some idea why in the world this was arriving so late! Take care, and best of luck to you.

In H & T,  
Terry Douds, Sigma '79

## PASCHALL

24 March 1983

To: Theta Tau

Just a few short notes that you may find worthy to fill space in the magazine.

I have been a USAF officer since graduating from N. C. State (Rho) in 1965 in electrical engineering. Currently, as a lieutenant colonel, I am serving as the Air Force Armaments officer in the U.S. Mission to NATO. Located at NATO Headquarters in Brussels, Belgium, the U.S. Mission is a State Department "embassy" with an ambassador as the person in charge. Because NATO is a defense alliance, the U.S. Mission has a high percentage of Defense Department personnel, both civilian and military. My function is to coordinate our activities at NATO Headquarters which relate to U.S. Air Force armaments development and production to gain better cooperation between the U.S. and its NATO allies.

(Continued on page 14)



# Additions to Membership



## ALPHA

924 Jeff James Bovitz, '85, Mounds View, MN; 925 Knut Eric Lodoen, '84, Crystal, MN; 926 Joseph Mark Richardson, '85, Manakato, MN; 927 Scott Steven Iwen, '84, Minneapolis, MN; 928 James Thomas Casey, '85, Richfield, MN; 929 Donald Andrew Schauer, '86, Le Sueur, MN; 930 Thomas Patrick Youngdahl, '86, New Brighton, MN

## BETA

1158 Charles Alden Kalbfleisch, '83, St. Ignace, MI; 1159 Jeffrey Paul Johnson, '82, Rock, MI; 1160 David W. Jesse, '82, Fraser, MI; 1161 Terrance J. Bekins, '83, Grand Haven, MI; 1162 Greg Joseph Sesselman, '81, Muskegon, MI; 1163 Jeff Scott White, '83, Quinnesec, MI; 1164 Michael Edward Geiger, '84, Davison, MI; 1165 David Jay Quarters, '83, Royal Oak, MI; 1166 James Ward Richards, '82, Iron Mountain, MI; 1167 John Michael Koller, '83, Iron Mountain, MI; 1168 Martin Joseph Weber, '84, Hibbing, MN; 1169 Robert Arthur Green, '84, Bellevue, MI; 1170 David Robert Warren, '84, Lathrup, MI; 1171 Kent Garret Evans, '83, Franklin, MI; 1172 Tony James Westphal, '84, Quinnesec, MI; 1173 Jeoffrey Allan Gundlach, '83, Iron Mountain, MI; 1174 Mike Keith Doubleday, '85, Southgate, MI; 1175 Stephen Paul Sanders, '83, Flint, MI; 1176 Gregory Thomas McCann, '84, Sterling Heights, MI; 1177 Philip Edward Papes III, '85, Port Huron, MI; 1178 Bruce Robert Meyer, '84, Walled Lake, MI; 1179 Ward Edwin Tuttila, Honorary '82, Houghton, MI; 1180 John Edwin Meyer, '83, Walled Lake, MI; 1181 David Mark White, '84, Marquette, MI; 1182 John Momicovich, '84, Flat Rock, MI; 1183 Keith Reid Watson, '84, Acton, Ontario, Canada; 1184 Michael Scott Wagner, '86, Newaligo, MI

## DELTA

1256 Mark Donald Assel, '85, Canton, OH; 1257 Marcus Peter Bak, '85, Polk, PA; 1258 Bonnie Robinette Beck, '85, Cleveland, OH; 1259 Edward David Flarsheim, '85, Louisville, KY; 1260 David Ulbes Franco, '85, Olmsted Falls, OH; 1261 Susan Free, '84, Elizabeth, NJ; 1262 Lisa Ann Lazaron, '84, Cincinnati, OH; 1263 Peter Carl Litwinowicz, '85, Gretna, LA; 1264 Daren Bruce McClearn, '85, Broadview Heights, OH; 1265 Kevin M. Pitts, '85, Cleveland, OH; 1266 Joseph James Vontorick, Jr., '85, Avon, OH; 1267 Lee Paul Bindeman, '85, Dayton, OH; 1268 Michel Andrew Cohan, '86, Amherst, NY; 1269 David Lawrence Leong, '86, Philadelphia, PA; 1270 Steven Douglas Tait, '85, Youngstown, OH; 1271 Douglas James Weating, '86, Lyndhurst, OH

## ZETA

806 Mary Margaret Gatewood, '83, Topeka, KS; 807 Glenn David Martin, '85, Lawrence, KS; 808 David William Linville, '85, Deerfield, IL; 809 Brett David Martin, '83, Topeka, KS; 810 Thomas Lee Rogers, '85, Tulsa, OK; 811 Lisa Joy Stinebaugh, '84, Leawood, KS; 812 Kristie Marie Stohs, '85, Lawrence, KS; 813 Timothy LeRoy Boller, '84, St. Joseph, MO; 814 Daniel Vincent Grelinger, '84, Kansas City, KS; 815 Thomas Blair Rickert, '85, McPherson, KS; 816 Paul Joseph VanBentham, '85, Lawrence, KS; 817 DeLoe Diane Godsey, '85, Junction City, KS; 818 Jerold Sandra Kaplan, '84, Overland Park, KS; 819 Steve Michael Wilcox, '84, Overland Park, KS; 820 Kristina Joan Durbin, '85, Tacoma, WA; 821 Michael Wayne Egner, '86, Leawood, KS; 822 Nancy Jane Roberts, '86, Fort Riley, KS; 823 Robert Andrew Sacks, '86, Kansas City, KS; 824 Allen Daniel Snyder, '86, Overland Park, KS; 825 Robert Bruce Southall, '86, Prairie Village, KS; 826 Kelly Dee Wood, '86, Rapid City, SD; 827 William Lee Brickhill, '86, Junction City, KS

## MU

1140 Bruce Charles Patterson, '84, Chatham, AL

## XI

474 Kermit Joseph Berge, '84, Camp Douglas, WI; 475 Patricia Ann Bowen, '84, Milwaukee, WI; 476 David George Schultz, '83, Wausau, WI; 477 Theodore Michael Slavik, '85, Appleton, WI; 478 Rita Madeline Falck, '85, Madison, WI

## OMICRON

936 Kim Marguerite Kennedy, '82, Washington, IL

## RHO

943 Ronald Earl Lee, Jr., '85, Kernersville, NC; 944 Samuel Grimes McCachern, '85, Winston-Salem, NC; 945 Craig William Kiley, '86, Raleigh, NC; 946 Mark Devere Strickland, '84, Goldsboro, NC; 947 Vincent Stanley Tryer, Jr., '84, Wilmington, NC

## SIGMA

731 David James Hrdlicka, '85, Independence, OH; 732 Paul Charles Wakefield, '84, Goshen, IN; 733 James Duncan Harris, '85, Portsmouth, OH; 734 Douglas Morton Endicott, '84, Columbus, OH; 735 Joseph John Prince, Jr., '86, Xenia, OH

## TAU

793 Nathaniel William Berry, '85, Farmington, ME; 794 Matthew Lee Stace, '85, Syracuse, NY; 795 Calvin Andrew Johnson, '84, Annapolis, MD; 796 Robert E. Davis, '84, Cortland, NY; 797 Susan Mary Seet, '85, Forest Hills, NY; 798 Yul Montá Brown, '86, McDonough, GA; 799 Charles Edward Chamberlin, '83, West Haven, CT; 800 Arthur Hayden Anderson, Jr., '83, Woodstock, NY; 801 Ursula Maria Holzer, '85, Windsor, NY; 802 Slawomir Jozef Marcinkowski, '86, New Britain, CT; 803 Brynmar Arthur Theodore Bowan, '85, Georgetown, Guyana; 804 Armetta Bonita Gaddy, '85, New York, NY; 805 Steve Marrero, '86, New York, NY

## UPSILON

905 Robert Harold Sanders, '86, Morrilton, AR; 906 Henry Garland Cook, '84, Alma, AR; 907 David Scott Gund, '85, Gaithersburg, MD; 908 Gregory Mack Garner, '87, Hope, AR; 909 James Anthony Hillyard, '86, Gamaliel, AR; 910 Stephen Ray Louks, '83, Little Rock, AR; 911 Monte Woodrow Harrison, '87, Alma, AR; 912 Terral Lynn Altom II, '85, Batesville, AR; 913 Gregory Lee Burrows, '85, Fort Smith, AR; 914 Michael Earl Sellers, '85, Crossett, AR; 915 Jeffrey Paul Justis, '85, Springdale, AR; 917 Christopher Daniel Difoe, '86, Melbourne, AR; 918 Kevin Lee Fletcher, '86, Little Rock, AR

## PHI

602 Jarrett Andrew Compton, '85, Otterbein, IN; 603 Kenneth Robert Neff, '85, Zionsville, IN; 604 Lonnie Rex Oxley, '84, Stendel, IN; 605 Evan Edward Patton, '86, Muncie, IN; 606 Scott Alan Potts, '85, Rensselaer, IN; 607 Michael Francis Reidy, '85, East Greenwich, RI; 608 Roger David Sautter, '85, Elkhart, IN; 609 Jeffrey Lawrence Tonges, '84, Batesville, IN; 610 Steven Robert Woodham, '84, Evansville, IN; 611 Scott Alan Friedman, '85, Sylvania, OH; 612 Bradley Richard Strock, '86, Anderson, IN; 613 Thomas A Underwood, '86, Corydon, IN

## CHI

892 Katherine Joan Gaul, '84, Huntington Beach, CA; 893 Melanie Louise Wymore, '84, Tucson, AZ; 894 Carlos Nicolas Ruiz, '85, Tucson, AZ; 895 Paul Joseph Sedlet, '85, Tucson, AZ; 896 Christopher Charles Oakes, '84, Los Altos, CA

## OMEGA

869 Mark Edward Behrens, '83, Sioux Falls, SD; 870 Daniel Jay Carlson, '83, Dallas, TX; 871 Jay Jeffrey Christensen, '84, Sioux Falls, SD; 872 Ron Michael Dolin, '83, Lemmon, SD; 873 Kevin Allen Hammer, '84, Huron, SD; 874 Jason Jon Kahl, '84, Aberdeen, SD; 875 Jeffrey Stuart Meyer, '84, Plymouth, MN; 876 Dion Daniel Miller, '83, Eureka, SD; 877 Alan Geoffrey Pretre, '84, Long Beach, CA; 878 John David Rathbun, '84, Pittsburgh, PA; 879 Timothy Carlyle Schooler, '84, Reliance, SD; 880 Stephan Trent Sundet, '84, Sioux Falls, SD; 881 Garret Clifford Swanson, '83, Valentine, NE; 882 David Allen Undlin, '84, Aberdeen, SD; 883 Joel Kipling Archer, '84, Gettysburg, SD; 884 George Malcom Behrens, '84, Sioux Falls, SD; 885 Dennis Edward Bress, '85, Newport Beach, CA; 886 Brad Alan Coleman, '84, Moberg, SD; 887 Steve James Davies, '84, Aberdeen, SD; 888 Gregory Russel Dickinson, '85, Wilmington, DE; 889 Alan Joseph Mechtenberg, '85, Rapid City, SD; 890 Steven Patrick Mullan, '84, Plymouth, MN; 891 Jeffrey Jon Rose, '84, Sioux Falls, SD; 892 Richard Frank Schrader, '85, Gordon, NE; 893 Bryan Hauge Strait, '84, Murrysview, PA; 894 Brian Lee Thompson, '84, Wessington Springs, SD; 895 Brian Douglas Welbig, '85, Dell Rapids, SD; 896 Daniel Arthur Wenzel, '85, Redfield, SD

## ETA BETA

292 Nathan Robert Cutbirth, '84, Des Moines, IA; 293 Gary Wayne Davis, '84, Liberty, TX; 294 John Shayne Page Giese, '84, Houston, TX; 295 Asad Karim, '83, Peshawar, Pakistan; 296 Donald Keith Love, '85, Houston, TX; 297 James Harold Porter, '84, Victoria, TX; 298 Miguel Cristobal Valdez, '84, Beaumont, TX; 299 Randy Allen Ward, '84, Bellaire, TX; 300 Agustín Azua, Jr., '85, Harlingen, TX; 301 Thomas Keely Brow, '85, Texas City, TX; 302 Judson

Alfred Hall, '84, Missouri City, TX; 303 Steven Mark Ortiz, '84, Houston, TX; 304 Nathaniel Todd, '85, Pine Bluff, AR

## IOTA BETA

212 Nancy Ann Danyo, '86, Riverview, MI; 213 Kent James Dennis, '86, Niles, MI; 214 Mark Robert Gadzinski, '86, Warren, MI; 215 Glenn Gerard Martin, '86, Southfield, MI; 216 Frank John Martinez, '86, Niagara Falls, NY; 217 Jean Marie Redmond, '86, Hollis, NY; 218 Michael Francis Welton, '86, Shirley, MA

## KAPPA BETA

345 James Martin Johnston, '85, Brandon, MS; 346 Thomas Glenn Perry, '85, Philadelphia, MS; 347 Tracy Blair Pittman, '85, Meridian, MS; 348 William Gregory Wall, '84, Mantachie, MS; 349 Mark Stephen Andrews, '87, Tupelo, MS; 350 Joseph Bowen Bennett, '87, Tupelo, MS; 351 Cindy Marie Greiczek, '87, Biloxi, MS

## LAMBDA BETA

204 John Thomas Devine, '86, Drayton Plains, MI; 205 Richard Edmund Dionne, '86, Drayton Plains, MI; 206 Robert Killen Forde, '86, Oak Ridge, TN; 207 Richard Darrell Williams, '85, Loudon, TN; 208 Scott Leland Godfrey, '84, Signal Mountain, TN; 209 James Odell Pope, '85, Murfreesboro, TN; 210 Ronald Lee Shope, '85, Loudon, TN; 211 Stephen Michael Wells, Hon., Cookeville, TN; 212 Gary Dean Hays, '86, Mount Juliet, TN; 213 David Joseph Kiefer, '86, Cookeville, TN; 214 Mark Steven Simmons, '85, Lynchburg, TN; 215 Michael Drew Sweazey, '87, Franklin, TN

## NU BETA

132 Lori Christine Huntoon, '84, Waupaca, WI; 133 Steven Lee Streblov, '84, Lake Mills, WI; 134 David Wayne Salmon, '84, Janesville, WI

# COMMUNICATION

by Michael J. Sanders, Φ '83

Currently I am the Corresponding Secretary for Phi Chapter, at Purdue University. The problem of better communication among alumni, chapters, and the national Fraternity has been an interest of mine for the last year. Since I will be graduating in May '83 and joining the ranks of the alumni, I wanted to address the problem now while I had the student point of view.

The specific area of communication that I would like to discuss is the problem of keeping a list of current addresses of the alumni. My experience in this comes from my responsibility for keeping Phi Chapter's list up to date. About 6% of our alumni are listed as "unknown address." (Ed. note: Nationally, the average is 14%). In the "Link," the newsletter that Phi Chapter sends to its alumni, I list all the brothers that are lost. Sadly, I get very minimal feedback from the alumni, letting me know where their pledge brothers now live. I have also checked with the local University records, which seem more confused than ours. Needless to say, it is a hard task to find the new address of someone who is "lost."

I started to think of what a problem this must be for the national Fraternity. Phi Chapter only has to deal with about 500 alumni, while National has close to 19,000 living members to keep track of. With some members dying and others moving all over the country, it is a task to update and keep a list current. (Ed. note: We revise approximately 40% of our alumni records per year) With this in mind, I sent the Central Office a

listing of Phi Chapter's records for comparison. The results were predictable, most addresses were consistent but there were differences.

The problem must also be shared by the alumni themselves. Some undoubtedly don't care whether they ever hear from their Chapter or Fraternity. These few, however, are never going to help our cause. Our efforts should be focused on the ones who will. For the majority of members that do care, there is a lot you can do. If you move, notify your Chapter and the Central Office, not just the water and electrical companies. If you know the whereabouts of a brother who is listed as lost, let the right people know. You should also be receiving a Gear and the newsletter from your Chapter on a regular basis. If you don't hear from either, write them and let them know you haven't heard from them. Even if you haven't moved, they might be having a problem with your particular address.

I'm not writing this about just a few lost members, but hundreds or more Theta Tau's that would like to be contacted about National or Chapter activities but aren't. (Ed. note: Nationally, approximately 4,500 members do not have a current address listed with the Central Office.) In finding the "lost" members, while gaining more new ones each year, we will make Theta Tau stronger, not only financially, but in all the other benefits which derive from a strong membership. When in college, you were a strong part of Theta Tau. Now as you grow older, let Theta Tau be a part of you.



# In Memoriam

## ALPHA

Edward Henry Hennen, '25, 2/6/83  
Stanley Clark High, '31, 3/8/82  
Robert Mackenzie Lofgren, '52  
Russell Sperry Pool, '27, 3/3/82  
Charles R. Vorck, Gamma '14, 5/20/82

## BETA

Robert Berryman Ashley, '50, 6/4/82  
Alfred Kitchener Snelgrove, '27, 10/17/82  
Zadoc William Thomas, '43, 11/2/82

## GAMMA

Charles Joseph Cerf, '40, 9/13/82  
William Albert Conley, '19, 1/1/83  
Ronald S. Coulter, '19, 11/6/82  
Kenneth Wilson Dickey, '31  
Frederick F. Frick, '08, Charter Member, 2/29/80  
Wayne A. Harrod, '16, 10/18/82  
Edward Francis Kingman, '34  
Bruce B. LaFollete, '22, 5/17/82  
Francis Peter Lehar, '34, 11/26/82  
George P. Mahood, '24, 10/2/80  
George Keith Taylor, '23, 4/12/82  
Roger F. White, '18, 8/8/82  
Robert Bruce Wilcoxon, '47

## DELTA

Kenneth Edward Buse, '67, 5/1/81  
Frank Anthony Cernese, '33, 7/7/82  
James Floyd Davis, '32, 6/24/82  
Thomas Eugene Duffy, '46, 7/28/82  
Thomas Edward Dyke, '33, 5/15/82  
Walter B. Henry, '51, 9/27/82  
Igo Jekkals, '60, 9/10/82  
William Louis Scherer, '30, 1/81  
John F. Skillman, '26, 12/2/82  
Alvin J. Tyler, Jr., '30  
Clarence Frederick Zeuch, '32, 2/9/83

## EPSILON

Charles Francis Bedford, '30, 1/14/82  
William Maguire, Jr., '25, 9/81  
Frank E. O'Neill, '20, 1/27/80  
Earl Leroy Packard, '11, 1/21/83

## ZETA

Donald Ephraim Bonjour, '31, 5/11/83  
Leon E. Edwards, '22, 1/12/83  
Charles Lester Shughart, '16, 4/10/82  
Edwin L. White, '22, 6/13/81

## ETA

Theodore Herrick Butler, '25  
Daniel Cowan Metzger, '27, 3/27/82  
Henry Royce Greenwood, '26, 6/81  
Benjamin Philbrick Lane, '23  
Walter Lyman Medding, '17  
Albert Sessions Redway, '23, 11/6/82

## THETA

Norman Theodore Buddine, '28  
K. Fritz Eilers, '24  
William Alfred Hadley, '39  
Donald Duane Snavely, '42

## IOTA

Jack Robert Babbitt, '50, 10/27/82

William H. Dunlop, '22  
Bemis Smith Followill, '31, 5/31/81  
Erwin Gammeter, '26, 10/31/82  
Richard James Hampel, '54  
Joe Ralph Jarboe, '30, 11/18/80  
William M. Keeling, '23  
Floyd Stanley Macklin, '32, 2/27/82  
John Douglas Martin, Jr., '33, 11/6/81  
James Joseph Murphy, '35, 1/12/82  
Claude Nathan Valerius, '25, 7/23/82

## KAPPA

Charles H. Dodge, '24, 3/80  
Milo P. Flickinger, '23, 1972  
John McDonald Gifford, '29, 9/20/82  
Brig. Gen. Henry Carl Lane, '31  
Thomas H. McCormack, '20  
John Ekern Ott, '17, 9/30/82  
Raymond George Purnell, '29, 7/82  
John L. Westenhaver, '18, 8/14/82  
Clarence S. Wright, '21

## LAMBDA

Glenn David Robertson, '19, Charter Member  
John Rodney Sutherland, '17, 1/82  
Victor William Sweet, '25, 12/4/80

## MU

Francis Charles, '40, 12/30/81  
Edward Hooper Harris, '36  
Bryan Hal Standley, '45, 6/17/82  
William Thomas Sute, '39, 7/81

## NU

Benjamin Roberts Auld, '30, 7/10/82  
John Webb Barto, '37  
Russell C. Clement, '24, 11/25/82  
Albert Edward Crique, '32, 5/9/82  
Samuel James Duncan, '23, Charter Member, 11/5/82  
Richard Thomas Huntoon, '48, 4/25/82  
Francis Thomas Lowrey, '34, 8/22/82  
Jack Edgar Morris, '32, 3/15/81  
Maxwell C. Scrimgeour, '26, 1976

## OMICRON

Ernest J. Beatty, '27  
Xavier P. Boyles, '27, 1980  
Allen Virgil Butterworth, '41, 4/7/83  
Donald Eugene Metzler, '39, 1982  
Dean Rhodes Sanderson, '49  
Robert Carl Smith, '49

## PI

Ralph Sales Fansler, Jr., '44, 8/3/81  
Milton LaTour Grigg, '28  
Holbert Hampden Long, '26, 1/18/82  
Charles Paul Mundorff, '52

## RHO

Carlton McKerrall Stallings, '49

## SIGMA

Henry Armstrong Brevoort, '25, Charter Member, 4/2/82  
Gerald William Hindel, '42, 8/24/82  
George Richard Lawrence, '28, 2/3/83

## TAU

Walter Carey, '29, 2/12/83  
Joseph Raymond Curtin, Jr., '42, 9/12/82  
Kenneth A. Digney, '31, 10/2/82  
Charles Francis Foell, '26, Charter Member  
Robert John Herzog, '40, 8/27/82  
Charles Hubert Kennedy, Jr., 7/9/81  
Robert Lawrence Raichlin, '59

## UPSILON

Harold Denton Albrecht, '32, 10/1/81  
George Francis Branigan, Hon. '27, 8/4/82  
Russell Blair Newman, '46, 11/14/82  
Russell B. Stone, '33, 5/31/80

## PHI

Leslie Ruel Russell, '27, 4/28/82  
William Edward Scherrer, '41  
Ralph R. Teetor, Hon. '12

## CHI

John Pitkin Cody, '40, 1/3/82  
Jacob Erickson, '31, Charter Member, 12/18/82  
William F. Sloan, '36, 7/15/82

## PSI

Harold Theodore Johns, Charter Member, '31, 12/30/81  
Paavo Pellervo Puomala, '41, 1980  
Douglas Harold Wadman, '60

## OMEGA

John Oscar Kammerman, '07, Charter Member, 11/9/82  
John Frederick Pearson, '61  
Ira Lloyd Stanley, '39, 5/2/82

## GAMMA BETA

Waldo Ross German, '53, 6/6/81  
Raymond Jeremiah Sullivan, '59  
George Frank Tittington, '50, 2/6/82  
Dominic Samuel Toffolo, '44, 12/4/82

## DELTA BETA

James Clayton Adams, '45, 3/28/82  
Arthur Edgar Hubbard, '52, 8/11/81  
Paul Fredrick Wantland, '47

## Memorial Funds—

Dominic Samuel Toffolo: Children's Hospital, c/o The Washington Post  
Edward Henry Hennen: Killingworth Library Fund, Killingworth, CT, or Connecticut Hospice, 61 Burban Drive, Branford, CT.

Finally, the Editor received a phone call from a member who had previously been reported dead. After listening to Edward F. Young, A '26, the Editor agreed that he is indeed not dead, and promised to retract the obituary notice published in the last GEAR. The notice was published on the advice of another member, and turned out to be a case of mistaken identity. We regret any inconvenience that this has caused.



# IN MEMORIAM: OBITUARIES

## GEORGE BRANIGAN

George F. Branigan, Upsilon, was Dean Emeritus of the College of Engineering at the University of Arkansas at Fayetteville. He received his B.S. from Nebraska, and his M.S. from Kansas State University.

## ALLEN BUTTERWORTH

Allen Butterworth, Omicron '41, head of the Mathematics Department of General Motors Research Laboratories, died of a heart attack April 7 in Warren, Michigan. He was 64.

Mr. Butterworth had also headed the Mathematics and Evaluation Studies Department at the GM Defense Research Laboratory in Santa Barbara, California. Before joining GM in 1959, he was assistant director for operations analysis of the Atomic Energy Commission. From 1948 to 1955, he was with the University of Chicago's Institute for Air Weapons Research.

He was a visiting lecturer for the Mathematical Association of America, and a member of the American Mathematical Society, the American Association for the Advancement of Science, the Operations Research Society of America, the American Economics Association, the Society for Industrial and Applied Mathematics, and Sigma Xi.

Among Brother Butterworth's survivors is Louis H. Butterworth, O '37.

## JAMES DUNCAN

S. James (Jim) Duncan was a graduate of the Carnegie Institute of Technology (now Carnegie-Mellon University) in Civil Engineering. Following a brief career in construction, he joined the International Salt Com-

pany, and was a promoter and designer of salt stabilized roads. He also pioneered the use of salt for winter pavement maintenance.

Retired in 1965, Jim was a life member of the American Road Builders Association and President of the Materials and Services Division of that organization. He belonged to the American Public Works Association, the National Safety Council, and the Highway Research Board. He also supported the Knights Templars, the Moslem Shrine, and the Birmingham Masonic Order.

## FRANK O'NEILL

Frank E. O'Neill, Epsilon '20, was a graduate of Richmond University, Colorado School of Mines, and Christ College of Cambridge, England. He received a degree in Petroleum Engineering at the University of California at Berkeley.

After attending Colorado School of Mines, he was sent to France during World War I with the rank of captain. He served as a battery commander, where he saw duty in the trenches under direct fire from the enemy.

During World War II, he headed up the Petroleum Engineering Department at the University of Southern California.

He continued to do research in the petroleum industry until his retirement.

## IN SYMPATHY

Brother Albert E. Stimac, Beta '65, informed us that his wife had died of cancer. He also enclosed a memorial gift. We would like to extend our sympathy to Brother Stimac, and hope that other members who have the opportunity will comfort him in his time of sorrow.

---

*(Alumni News Continued from page 10)*

My family and I arrived in Brussels in July, 1982, having moved from the Washington, D.C. area. I completed my senior level professional military education in June, 1982, at the Industrial College of the Armed Forces at Fort McNair, Washington, D.C. Prior to going to the Industrial College in August, 1981, I served for four years as the principal staff officer for the NAVSTAR Global Positioning System Program at Headquarters, U.S. Air Force.

My wife, Patricia, and I have three children: Cathy (16 years), Carl (14 years), and Stephen (6 years). They are attending school in Brussels at the Brussels American School under the Department of Defense Dependents Schools System.

We enjoy our assignment in this very international arena but do look forward to returning to the U.S. in 1985.

In H&T,

LtCol Richard C. Paschall, Jr., Rho '65

## HOKENSON

Brother Lynn Hokenson, A '44, was in the running as a candidate for the U.S. Congress in the new Seventh District of Ohio in the Republican primary on June 8, 1982. Although Hokenson did not win, it's nice to know that Theta Tau's are out there trying to assure good government.

# PROFESSIONAL DIRECTORY



**\$50 per card**  
**Reproduced black and white**  
**Photos extra**  
**Deadline for Spring '84:**  
**February 1, 1984**

PHONE (202) 343-9533

WM. J. ELLENBERGER, P. E.  
*Engineer/Consultant*

6419 BARNABY STREET N.W.  
 WASHINGTON, D. C. 20015

612-641-9784

T. P. LENNON CO.  
 MANUFACTURERS REPRESENTATIVES  
 POWER TRANSMISSION EQUIPMENT

9613 ENGLISH CIRCLE  
 THOMAS P. LENNON, JR. BLOOMINGTON, MN 55438

THE MARK OF RELIABILITY

NORMAN L. CARROLL  
 Zeta '52 President



**APPLIED TEST  
 SYSTEMS, INC.**

**MATERIALS TESTING  
 EQUIPMENT & ACCESSORIES**

- Universal Test Machines
  - Creep/Stress Rupture
  - Stress Relaxation
  - Constant Stress
- Laboratory Furnaces, Ovens

Saxonburg Blvd.  
 Saxonburg, Pa. 16056  
 Phone: 412/265-1546

**Your Card  
 Here!**

Glenn D. Shoemaker  
 P.E.  
 President

**Shoemaker  
 & Haaland Professional Engineers**  
 1500 First Avenue, Council Bluffs, Iowa 52241 319-351-7150

**Send cards to  
 Editor of the Gear  
 P.O. Box 2810  
 Iowa City, IA 52244  
 Do not staple or paper clip**

A. E. "DUSTY" RHODES  
 CONSULTANT

2201 SAN PEDRO DRIVE NE  
 BUILDING 3, SUITE 214  
 ALBUQUERQUE, NM 87110

(505) 884-2871

**G. W. WHITTAKER**  
 RAILWAY ELECTRO-PRODUCTS CO., INC.  
 18655 CHESTNUT (312) 798-2103  
 COUNTRY CLUB HILLS, IL 60477 Telex 724369 ATT RAIL

*Electrical & Electronic Products for Railroad, Transit, & Industry*

**CONSULTING SERVICES**

- Locomotive Application & Design • Traction Power Systems • Electronics •
- MANUFACTURING SERVICES
- Custom Electronics • Electronic Assembly • Controls & Components •
- Wire Harnesses • Cable Assemblies •
- Receiver Systems • Automated Systems • Microprocessor Systems •

This section is being done on a trial basis, as a service to members. Although no charge will be made for a listing, it is suggested that a member subsequently employed may want to contribute 2 to 3 % of the first month's salary in the new job to the Fraternity to help underwrite publication of the magazine. This service is being reviewed, and may change in format as space, demand, and manpower allow.

## POSITION WANTED

Jeffrey W. Lusk, P. E., Sigma '74  
 1517 Presidential Drive  
 Columbus, Ohio 43212

614/291-3456 (leave message)

MBA, 1978, Indiana University

BSISE, 1974, The Ohio State University

**PROFESSIONAL EXPERIENCE:** Nine years of corporate industrial and management engineering; strategic planning; statistical quality control.

**POSITION SOUGHT:** Economic development; quality and productivity to improve competitive position. No geographical preference.

**PROFESSIONAL SPECIALTY:** Engineering economic analysis

## ΘT LIBRARY

The Central Office recently received two welcome additions to the Theta Tau Library from Brother C. Maxwell Stanley, O'26. The titles received are The Consulting Engineer, 2nd Edition, 1982, John Wiley & Sons, Inc.; and Managing Global Problems, 1979, Stanley Foundation.

These join two books earlier donated by Brother Stanley: Waging Peace, 1956, Macmillan Co., and The Consulting Engineer, 1961, John Wiley & Sons, Inc.

These books, as well as any other books in the Theta Tau library, are available for loan to Theta Tau members in good standing. A complete list of books is available upon request.

Have you written a book? If you have, may we have a copy? We would like to keep the Theta Tau library up to date. We rely on you to help us.

We would like to have a copy of every book written by a Theta Tau. Send yours to the Central Office, 9974 Old Olive Road Street, St. Louis, MO 63141-5984.



## Chapter Directory

<b>*Alpha:</b> <b>**C</b>	515 Tenth Avenue, S.E. Minneapolis, MN 55414	<b>*Chi:</b> <b>W</b>	1614 East Speedway Boulevard Tucson, AZ 85719
<b>*Beta:</b> <b>C</b>	Box 77, Route #1 Houghton, MI 49931	<b>Psi:</b> <b>W</b>	c/o Prof. Charles Herndon Montana College of Mineral Science & Technology Butte, MT 59701
<b>Gamma:</b> <b>W</b>	Box 57, Colorado School of Mines Golden, CO 80401	<b>*Omega:</b> <b>W</b>	109 Kansas City Street Rapid City, SD 57701
<b>Delta:</b> <b>E</b>	Fibley Commons 2345 Murray Hill Cleveland, OH 44106	<b>*Epsilon</b> <b>Beta:</b> <b>E</b>	478 West Alexandrine Detroit, MI 48201
<b>*Zeta:</b> <b>C</b>	1935 Heatherwood Lawrence, KS 66044	<b>*Eta Beta:</b> <b>S</b>	7487 Sante Fe Street Houston, TX 77061
<b>*Mu:</b> <b>S</b>	P.O. Drawer AM University, AL 35486 (#10 Bryce Lawn Tuscaloosa, AL 35401)	<b>*Iota Beta:</b> <b>E</b>	4026 West McNichols Road Detroit, MI 48221
<b>*Xi:</b> <b>C</b>	1633 Monroe Street Madison, WI 53711	<b>*Kappa Beta:</b> <b>S</b>	P.O. Box 2983 Mississippi State, MS 39762 (56 South Park Estates Starkville, MS 39759)
<b>Omicron:</b> <b>C</b>	3115 Engineering Building University of Iowa Iowa City, IA 52242	<b>*Lambda</b> <b>Beta:</b> <b>S</b>	513 North Walnut Avenue Cookeville, TN 38501
<b>Rho:</b> <b>S</b>	Box 5325, State College Station Raleigh, NC 27650	<b>*Mu Beta:</b> <b>E</b>	1210 West McClellan Flint, MI 48504
<b>*Sigma:</b> <b>E</b>	1946 Indianola Avenue Columbus, OH 43201	<b>Nu Beta:</b> <b>C</b>	Ottensman Hall Engineering Dept. University of Wisconsin-Platteville Platteville, WI 53818
<b>*Tau:</b> <b>E</b>	1105 Harrison Street Syracuse, NY 13210	<b>Iowa State</b> <b>University</b> <b>Colony</b> <b>C</b>	114 Marston Hall Iowa State University Ames, Iowa 50011
<b>*Upsilon:</b> <b>S</b>	1322 West Cleveland Fayetteville, AR 72701		
<b>*Phi:</b> <b>E</b>	416 N. Chauncey, West Lafayette, IN 47906		

\* Chapter House

\*\* Each chapter's Region is denoted under its name, thus: C, Central; E, Eastern; S, Southern; and W, Western.

THETA TAU FRATERNITY  
9974 Old Olive Street Road  
St. Louis, Missouri 63141-5984

Non-Profit Org.  
U.S. Postage  
PAID  
Indianapolis, IN  
Permit No. 5195