

The GEAR of THETA TAU



FALL 1975

VOLUME LXIV

NUMBER 1



Theta Tau Directory

Theta Tau Fraternity was founded at the University of Minnesota, Minneapolis, Minnesota, on October 15, 1904, by: ERICH J. SCHRADER; ELWIN L. VINAL; WILLIAM MURRAY LEWIS; and ISSAC B. HANKS.

PAST GRAND REGENTS

- | | |
|--|---|
| ERICH J. SCHRADER, <i>Alpha</i> , (1904-1919)* | DONALD D. CURTIS, <i>Omicron Hon.</i> , (1950-1952)* |
| GEORGE D. LOUDERBACK, <i>Epsilon</i> , (1919-1925)* | JAMISON VAWTER, <i>Zeta</i> , (1952-1954)* |
| J. SIDNEY MARINE, <i>Eta</i> , (1925-1927)* | A. DEXTER HINCKLEY, <i>Theta</i> , (1954-1958), 154 East River Road, Guilford, Conn. 06437 |
| RICHARD J. RUSSELL (DR.), <i>Epsilon</i> , (1927-1931)* | CHARLES W. BRITZIUS, <i>Alpha</i> , (1958-1962), 662 Cromwell Avenue, St. Paul, Minn. 55114 |
| FRED COFFMAN, <i>Lambda</i> , (1931-1935)* | WILLIAM K. REY (PROF.), <i>Mu</i> , (1962-1966), P.O. Box 664, University, Ala. 35486 |
| HERMAN H. HOPKINS, <i>Beta</i> , (1935-1937), 3320 Culver Avenue, Evanston, Ill. 60201 | C. RAMOND HANES, <i>Sigma</i> , (1966-1968), 2190 S. Wapak Road, Lima, Ohio 45805 |
| JOHN M. DANIELS (DR.), <i>Nu Hon.</i> , (1937-1939)* | CHARLES E. WALES (DR.), <i>Epsilon Beta</i> , (1968-1972), 113 Webster St., Morgantown, W.Va. 26505 |
| RUSSELL G. GLASS, <i>Sigma</i> , (1939-1946), Saddleback Lane, Gates Mills, Ohio 44040 | * Deceased. |
| RALPH W. NUSSER, <i>Zeta</i> , (1946-1948), 609 West Dartmouth, Kansas City, Mo. 64113 | |
| NORMAN B. AMES, <i>Gamma Beta</i> , (1948-1950)* | |

EXECUTIVE COUNCIL

- | | |
|-------------------------|--|
| GRAND REGENT | GEORGE G. DODD (DR.), <i>Kansas</i> '60 |
| | 29451 Cunningham Dr., Warren, Mich. 48092 |
| GRAND VICE REGENT | STEPHEN J. BARTH, <i>Tennessee Tech</i> '67 |
| | 230 North Franklin, Greensburg, Ind. 47240 |
| GRAND SCRIBE | ROBERT E. POPE, <i>Kansas</i> '52 |
| | 13 Sona Lane, St. Louis, Mo. 63141 |
| GRAND TREASURER | CHARLES W. BRITZIUS, <i>Minnesota</i> '33 |
| | 662 Cromwell Ave., St. Paul, Minn. 55114 |
| GRAND MARSHAL | HARVILL C. EATON, <i>Tennessee Tech</i> '70 |
| | Box 797, Station B, Vanderbilt Univ., Nashville, Tenn. 37235 |
| GRAND INNER GUARD | RALPH H. WALES, <i>Wayne State</i> '54 |
| | 16510 Hiland Trail, Linden, Mich. 48451 |
| GRAND OUTER GUARD | JOHN E. DANIEL, <i>Alabama</i> '65 |
| | 4548 Sandringham Dr., Columbus, Ohio 43220 |
| STUDENT MEMBER | RONALD S. WALLACE, <i>Alabama</i> '75 |
| | P.O. Box 5772, University, Ala. 35486 |
| DELEGATE-AT-LARGE | CHARLES E. WALES (DR.), <i>Wayne State</i> '53 |
| | 113 Webster St., Morgantown, W.Va. 26505 |

CENTRAL OFFICE

Robert E. Pope, *Kansas* '52, Executive Secretary, 13 Sona Lane, St. Louis, Mo. 63141

APPOINTEES

- | | |
|----------------------------------|--|
| SOUTHERN REGIONAL DIRECTOR | TOMMY G. FREEMAN, <i>Tennessee Tech</i> '74 |
| | Arbour East Apt. 164, 6001 Old Hickory Blvd., Hermitage, Tenn. 37076 |
| CENTRAL REGIONAL DIRECTOR | THOMAS R. HERMAN, <i>Louisville</i> '73 |
| | 510 Tobin Dr., Apt. 102, Inkster, Mich. 48141 |
| ARCHIVIST | JOSEPH W. SKOVHOLT, <i>Minnesota</i> '31 |
| | 1430 Raymond Ave., St. Paul, Minn. 55108 |



The Gear of Theta Tau

FALL 1975

VOLUME LXIV NUMBER 1

JAMES M. WALTER, *Editor-in-Chief*
2534 Honeybee Lane
Memphis, Tennessee 38134

Contents

Theta Tau Directory	2
Charles E. Wales Convention Marks Fraternity's Seventieth Year	4
Alumni News	8
Chapter News	10
Chapter Addresses	11
Alpha—Additions to Membership	12
Information Cards	13
Alumni Field Secretaries Named	16

Notice: Effective with the Spring 1976 issue, *THE GEAR* of Theta Tau will be edited by Brother Steve A. Williams, *Lambda Beta* '73, 4701 Old Hickory Blvd., Apt. A-106, Old Hickory, TN 37138. In my four years of service to the Fraternity, I have had the opportunity to work with many people to whom I am most appreciative for assistance. This issue is dedicated to all of them, and specifically to my wife Sue, Executive Secretary Bob Pope, Past Grand Regent Charley Wales, Grand Regent George Dodd, and those at the George Banta Co. including my father, Milton Walter, who made each issue a reality.—JMW.

Cover: Seated at the head table at the 1974 Charles E. Wales Convention are (from left to right): Past Grand Regent Russell Glass, *Sigma*; Grand Vice Regent Stephen Barth, *Lambda Beta*; Grand Regent George Dodd, *Zeta*; Past Grand Regent C. Ramond Hanes, *Sigma*; and Past Grand Regent Charles Wales.

● *THE GEAR* is the official publication of Theta Tau, National Professional Engineering Fraternity, and is published fall and spring. The magazine is an educational journal devoted to matters of Fraternity interest and is sent at no cost to alumni whose addresses are on record. ● Send change of address to 13 Sona Lane, St. Louis, Mo. 63141. ● *THE GEAR* is printed by The Collegiate Press, Menasha, Wis. Third class postage has been paid at Menasha, Wis. 54952.

Charles E. Wales Convention

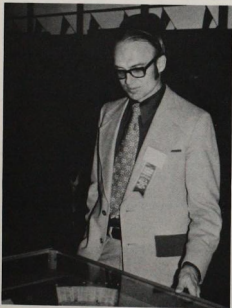
Members arriving in Indianapolis by air found the Convention site within easy walking distance, just across the parking lot from the terminal, at the Hilton Inn at the Airport. The central location of the city, however, made it possible for those from a number of chapters to travel by automobile and to bring a larger delegation. In this regard, Lambda Beta Chapter was far ahead of the second place chapter, having registered at the Convention 25 members and 4 pledges plus the alumnus initiated during the Convention.

The Convention was hosted by Phi Chapter at Purdue University in Lafayette. The distance to Indianapolis from the chapter

site placed a special burden on the Host Committee headed by Stephen Northcraft, '74, but it performed in an exemplary manner, nevertheless.

Chapter displays, set up before registration on Friday afternoon, December 27, were of unusually high quality. Most chapter delegates had seen the Credentials Committee before the Convention began with a problem-solving session using Guided Design, an education technique developed by Past Grand Regent Charles E. Wales, *Wayne State '53*, who led the session. Later, a resolution was adopted naming the Convention "The Charles E. Wales Convention" honoring the Charter Member of Epsilon Beta Chapter who went on to serve on the Theta Tau Executive Council as Grand Outer Guard, Grand Inner Guard, Grand Vice-Regent, Grand Regent, and currently as Delegate-at-Large. The resolution also cited his continuing interest and devotion in serving all engineers as well as those in the Fraternity, a reference to his acknowledged contributions in the field of engineering education.

Also on Friday afternoon, Grand Vice-Regent John M. Dealy, *Zeta '58*, led a seminar on parliamentary procedure which was to prove very helpful later when the Convention business involved some complicated procedures. This session was also well received. Indeed, one resolution adopted later provided that there be a similar workshop at each Regional Conference and Biennial Convention in the future. Later, Brother Dealy was to announce his retirement from the Executive Council and twice receive a standing ovation as the Convention expressed its thanks for his fifteen years of service to the Fraternity on the national level. A resolution of gratitude noted especially his work in rewriting the Constitution and Bylaws. Prior to the current biennium, he had



Brother George G. Dodd, *Kansas '60*, re-elected to the position of Grand Regent during the convention, is shown viewing the scale model replica of the Indianapolis 500 during the tour of that facility.

served as Grand Outer Guard and Grand Inner Guard.

Members and their ladies were welcomed at the Opening Dinner after which there was an interesting presentation by Ken Fries, President of the Colony at the University of Wisconsin-Platteville, who participated in the open events of the Convention along with Taryn Nall from that Colony. A second presentation was given by Brother George Puls, Past Regent of Gamma Chapter, who had been instrumental in getting that chapter on a financially sound basis during the biennium. The first official session of the Convention was held Friday evening, followed by Committee meetings.

Saturday began with Chapter Officer Workshops at breakfast, preceded by a presentation on Professional Development by Brother Randy Bates, Xi '77, and followed by the Second Convention Session.

A highlight of the Convention was the tour of the Indianapolis 500 Speedway and a visit to the museum there. The group picture was taken in the stands at the auto race track.

Regional Luncheons Saturday noon provided the traditional opportunity for those from each of the five geographic regions to meet together to discuss regional matters and to make some general plans for the Regional Conferences to be held in Fall, 1975. Brother Tom Herman, Delta Beta '73, Student Member of the Executive Council, led the Leadership Development Seminar on Saturday afternoon. Later that afternoon, the report of the Disciplinary Committee presented some difficult decisions for Convention action.

Dinner was open Saturday evening, followed by casual volleyball competition, and more late-night committee work.

Sunday breakfast was accompanied by a full program of presentations by student



The meal functions throughout the Convention offered the opportunity for members from each of the regions to get together with national officers and regional directors to develop friendships.

members: Peter Checklick, Tau '76, on Rushing; Randy Lewis, Lambda Beta '75, on Incorporating a Chapter; and James Riner, Upsilon '76, also on Rushing. The Fourth Convention Session included the Report by the Committee on Women Membership. Despite the controversial nature of this subject, the matter was resolved without lengthy discussion on the floor. This was possible because many interested members had been involved in extensive discussion in the Committee meetings. The Convention adopted the Committee's Report which proposed no change in the Fraternity's seventy-year tradition as a male fraternity, but which also included provision for the forward-looking action of attempting to aid and cooperate in the future development of a female profes-

Marks Fraternity's Seventieth Year

sional engineering fraternity; and provided that the Executive Council assist any chapter having problems due to its single-sex operation. In this Session, the Convention was actually running ahead of the announced agenda schedule.

At the Grand Chapter Memorial Service later that morning, the Fraternity paid tribute to those members whose deaths had been reported since the previous Convention.

At the luncheon on Sunday the honored guest and speaker was Mr. Jack L. Anson, a member of Phi Kappa Tau, who is Executive Director of the National Interfraternity Conference. He noted the similari-

Initiated at the ceremony late Sunday afternoon was Charles L. Smithson, Jr., '66, a member of the local Sigma Delta Phi at Tennessee Tech which became Lambda Beta Chapter. The initiation team, drawn from student members present at the Convention, as is traditional, carefully prepared for this model ceremony during the earlier part of the Convention.

The Reception and Banquet provided a highlight of the Convention for members and their ladies. Grand Regent Dodd served as toastmaster. The Reverend James B. Guffey, *Delta Beta* '62, gave the invocation. After introduction of those at the head table, each Past Grand Regent present



Exhibits by the various chapters were assembled prior to the opening of the Convention. Brother Fort Gwinn stands beside the Lambda Beta display featuring the Erich J. Schrader Award given the best chapter of the biennium. Lambda Beta Chapter took the honors for the third consecutive biennium. The University of Wisconsin at Platteville Colony also had an exhibit recognizing their members.

ties between his fraternity and Theta Tau, and discussed interfraternity cooperation in solving common problems.

The Fifth Convention Session saw much time devoted to consideration of proposals by the Constitution and Insignia Committees. In the end, the Executive Council was not enlarged, and no Little Sister insignie was adopted. However, the Convention did amend the Bylaws to make purchase of the Theta Tau badge optional, although there must be one available for each student member to wear.

spoke briefly. As the earliest Grand Regent present, Brother Russell G. Glass, *Sigma* '24, spoke first, and received a standing ovation. He was followed on the program by Past Grand Regents Charles W. Britzius, *Alpha* '33, C. Ramond Hanes, *Sigma* '25, and Charles E. Wales, *Epsilon Beta* '53. Joseph W. Skovholt, *Alpha* '31, Archivist and Historian, presented the Best Newsletter and Best Photograph Awards for the year ending Spring, 1974. Winners were: Lambda Beta first, Phi second, and Omega third in the Newsletter competition; and

Sigma first in the Photograph competition. Since there had not been competitive athletic play during the Convention, Ralph H. Wales, *Epsilon Beta* '54, Northern Regional Director, made a humorous presentation in lieu of awarding a volleyball trophy. Fred E. Armstrong, *Mu* '61, Grand Marshal, presented Sigma Chapter the award for the best display at the Convention; and Thomas R. Herman, *Delta Beta* '73, Student Member of the Council, announced that the Best Presentation award went to Lambda Beta.

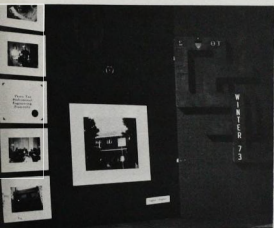
The Erich J. Schrader Award, in the form of a heroic size traveling plaque in addition to a certificate, was presented by

received from Past Grand Regents Hopkins, Nusser, and Hinckley, and from Past GEAR Editor Franklin.

The Banquet Address, "The Real World of Engineering" was given by Grand Outer Guard Barth who was honored with a standing ovation.

During announcements at the close of the Banquet, Eric Pittelkau, *Chi* '74, who had served as Regent during the Initiation Ceremony, introduced Brother Smithson, who was welcomed with a standing ovation.

Following the Banquet, some had the remainder of the evening free, but others worked late into the night with incomplete committee work. Among these was the Ex-



The chapter display assembled by Sigma Chapter at Ohio State University took the Convention honors as the best display. The Convention Banquet gave members and their ladies an opportunity to socialize amidst the business-like atmosphere which dominated the official sessions. At the Banquet, Rho Chapter received the Founders' Award for showing the greatest improvement during the biennium.

Brother Britzius to Lambda Beta Chapter which received it as the outstanding chapter for the third consecutive biennium. The Founders' Award, established at the previous Convention, was presented to Rho Chapter for showing the greatest improvement during the biennium.

Grand Regent Dodd announced that two men had been named as Outstanding Delegate by the Convention, Frank T. Philpott of Pi Chapter and George Puls of Gamma Chapter. Greetings from those not able to be present were then read. Messages were

executive Council which had met often during the Convention. A strong effort was made to have each chapter's delegation meet with its Regional Director and the Executive Secretary at free moments during the Convention. In the case of those chapters with serious problems or special requests, the delegations met with the entire Executive Council.

Despite the serious effort to follow the announced agenda, the Final Convention Session following breakfast on Monday

(Continued on page 15)



alumni news

RICHARD E. SCHUETT, *Alpha '34*, is an assistant superintendent of administration for Burlington Northern, Inc., Glendive, MT.

JOHN W. ST. VINCENT, *Alpha '44*, is division superintendent with U.S. Steel, Pittsburgh, PA.

WALTER WYCLOS, *Alpha '54*, is a manufacturing director with 3M Co., and lives in Afton, MN.

NILS E. NILSEN, *Beta '24*, is Chairman, Great Boulder Mines, Melbourne, Australia.

RICHARD J. ALKEMA, *Beta '49*, is director of Mid Africa Operations for Ingersoll Rand Co., Nairobi, Kenya.

ROGER B. ANTHONY, *Beta '62*, is chief engineer, product development, Gulf & Western. He resides in Northville, MI.

ROBERT J. CYS, *Beta '62*, is a project manager with Arthur G. McKee & Co., Chicago. He lives in Glenview, IL.

F. C. WHEATLAKE, *Beta '69*, is with Hydaker-Wheatlake Co., Reed City, MI.

EDMUND F. PETERSEN, JR., *Gamma '37*, is a consulting mining engineer living in Sarasota, FL.

CHARLES J. DUNN, III, *Gamma '49*, resides in Oklahoma City, OK.

EDWARD J. BUELL, *Delta '17*, is Chairman of the Board, Niagara Wire Weaving Co., Niagara Falls, Ont.

GEORGE C. GRAF, *Delta '23*, is retired and living in Philadelphia, PA.

CHAUNCEY O. DEWITT, *Delta '26*, is retired and living in Teaneck, NJ.

J. O. HERBSTER, *Delta '29*, lives in Warwick, RI.

CHARLES F. PAGACAR, *Delta '33*, resides in Bromall, PA.

ROBERT H. WARMELING, *Delta '54*, is plant manager for Gibson Equipment Co., Cleveland, OH.

HERBERT W. DORNBUSH, JR., *Delta '70*, is a systems analyst for National Systems Co., Cleveland, OH.

JOHN L. PETRIC, *Delta '73*, is a process engineer with Lubrizol Corp., Cleveland, OH.

GORDON R. BELL, *Epsilon '33*, is a self-employed geologist living in Bakersfield, CA.

JAMES R. DORRANCE, *Epsilon '27*, resides in San Diego, CA.

LLOYD W. LOWREY, *Epsilon '26*, lives in Rumsey, CA.

V. K. JOHNSON, *Zeta '55*, is owner of Beeson-Johnson Assoc., Lenwood, KS.

WAYNE E. LUFF, *Zeta '29*, is retired and living in Tarpon Springs, FL.

ROBERT L. BOGGS, *Zeta '27*, lives in Houston, TX.

A. G. MAY, *Zeta '38*, is partner, May Engineering Co., Kansas City, MO. He lives in Shawnee Mission, KS.

PAUL E. BERGER, *Zeta '71*, is a aerospace technologist with NASA, Hampton, VA.

WILLIAM K. FRESHLEY, JR., *Zeta '61*, is a general manager with Allen West, Ltd., Brighton, UK.

JOSEPH S. YATES, *Eta '27*, is a consulting engineer living in Wyandotte, MI.

GEORGE SCHWEDERSKY, *Theta '22*, is a self-employed consultant residing in Westport, CT.

DARWIN J. POPE, *Theta '23*, is self employed and lives in Scarsdale, NY.

CHARLES D. PREUSCH, *Theta '39*, is a senior engineer with Crucible Inc., Div. of Colt Ind., Pittsburgh, PA.

CLARK I. FELLERS, *Theta '41*, is facilities manager for Eastman Kodak Co., Rochester, NY.

WILLIAM P. COOK, *Theta '43*, is manufacturing director for Hyster Europe Ltd. He lives in London.

N. KNOWLTON KING, *Theta* '55, is managing director of Shellmar Embalagem Moderna S.A. He resides in Sao Paulo, Brazil.

JEFFREY M. FRANKLIN, *Theta* '68, is an assistant director, office of management and control, City of New York.

CLAUDE N. VALERIUS, *Iota* '25, is self-employed and living in Shreveport, LA.

M. E. DEEN, *Iota* '62, is a superintendent with General Motors Corp. He lives in Defiance, OH.

ROBERT W. PASHBY, *Kappa* '32, is retired and living in Colorado Springs, CO.

Col. WOOD PURCELL, *Mu* '33, is retired and resides in Augusta, GA.

KENNETH R. DANIEL, *Mu* '36, is President of American Cast Iron Pipe Co., Birmingham, AL.

HERBERT H. GRAY, *Mu* '43, is a regional vice president with Westinghouse Electric Corp. He lives in Atlanta, GA.

RAYMOND L. SHIRTZ, *Mu* '51, is director of production for L.C.R. Div. of Squibb Corp., Holmdel, NJ. He resides in Brielle, NJ.

THOMAS J. TERRELL, *Mu* '50, is vice president-operations, J. B. Converse & Co., Inc., Mobile, AL.

JAMES A. BRYANT, JR., *Mu* '58, is a staff engineer with Martin Marietta Corp., Orlando, FL.

RANDOLPH W. PRIDDY, *Mu* '64, is an electronic engineer with the U.S. Army Missile Command, Redstone, AL. He makes his home in Huntsville, AL.

GARY J. DAVIS, *Mu* '69, is a senior process engineer with Monsanto Textiles Co., Decatur, AL.

JERRY M. TRIMM, *Mu* '72, is an industrial engineer with Mead Metals & Minerals, Bessemer, AL and lives in Hueytown, AL.

WILLIAM D. JORDAN, JR., *Mu* '73, is a distribution engineer with Alabama Power Co. He resides in Maylene, AL.

DONALD A. DUNCAN, *Mu* '74, is with Ford Construction Co., Memphis, TN.

MALCOLM D. HALL, *Mu* '74, is a process control engineer with ACIPCO, Birmingham, AL. He lives in Adamsville, AL.

IVER H. LUNDGREN, *Nu* '33, is retired and living in Sunn City, AZ.

KENNETH J. ENGELSDINGER, *Xi* '51, is a materials test engineer for the Wisconsin Dept. of Trans., Madison, WI.

WILLIAM J. PLUMMER, *Xi* '49, has published *Friends of the Family*, a follow-up to his well received *A Quail in the Family* of last year. Both books were published by the Henry Regnery Co., Chicago, which has already purchased Brother Plummer's third work (*Five of a Kind*) for release late in 1976. He is living in Las Vegas, NV, with his wife and four children.

DR. SHERMAN D. ANSELL, *Xi* '59, is a consultant with the Wisconsin Board of Vocational and Technical Adult Education, Madison, WI.

MICHAEL F. QUIRK, *Xi* '64, is a project engineer with DeLeuw, Cather International. He is located in Beirut, Lebanon.

WESLEY J. PANZER, *Xi* '71, is a development engineer with Goodyear Tire & Rubber Co., Akron, OH. He lives in Cuyahoga Falls, OH.

RUSSELL E. CRAWFORD, *Omicron* '25, is retired and lives in Lombard, IL.

L. W. KENE, *Omicron* '31, is self-employed in Waverly, OH.

HERMAN D. BRICE, *Omicron* '34, is a hydraulic engineer with the U.S. Geological Survey, Reston, VA. He lives in Arlington, VA.

ROLAND F. KREBILL, *Omicron* '38, is self-employed, living in Keokuk, IA.

JAMES JORGENSEN, *Omicron* '42, is an engineering specialist with Goodyear Aerospace Corp., Litchfield Park, AZ. He resides in Phoenix, AZ.

ROBERT ERICKSON, *Omicron* '48, is an associate with Veenstta & Kimm, Urbandale, IA.

HAROLD R. HATCHER, *Omicron* '48, is a construction engineer with Stanley Consultants, Inc., Muscatine, IA.

L. EARL TABLER, *Omicron* '52, is manager, planning and scheduling for Dravo Corp., Pittsburgh, PA. He lives in Cotoapopolis, PA.

HAROLD R. MILLER, *Omicron* '54, is a project engineer with Lockheed Missiles & Space Co., Inc., Sunnyvale, CA. He resides in Saratoga, CA.

KENT ANDERSON, *Omicron* '69, is government relations representative for The Trane Co. He lives in Alexandria, VA.



chapter news

IOTA BETA CHAPTER *University of Detroit*



Improvement in some form or another is the goal of every chapter, and Iota Beta is no exception. The fall, 1975 pledge class consists of nine men, the result of a strong rush program that every active—and some of our alumni—participated in. Next semester we

plan to pledge at least an equal number of men and further improve the overall membership of the chapter.

The chapter's financial situation was improved through a file-cleaning effort conducted early in the semester aimed at streamlining the chapter operation. At the present time we plan to have the chapter house paid off within five to six years.

Seven pledges for the Little Sisters program have been gained this semester, and the Little Sister pledge program has been revamped.

The past year has also seen our active members take a greater interest in campus activities outside the Fraternity. Intramural teams in football and basketball have been established and one of the brothers, Laval Perry, has been named captain of the varsity basketball team. Brother Bill Underwood

has been appointed as Sports Editor of the school newspaper, the *Varsity News*. In addition, the chapter is going to sponsor a charity benefit called "Kill a Keg for Cancer" with proceeds going to the American Cancer Society in the area.

Upcoming social activities include the bi-annual Engineering riot party and some trips to a few of the away basketball games. The usual parties held at the house are also planned throughout the semester.

BILL UNDERWOOD
Scribe

DELTA BETA CHAPTER *University of Louisville*



The membership of Delta Beta chapter increased to nineteen after the initiation of the summer pledge class. In order to further increase the number of members, great efforts were de-

voted to fall rushing. As a result, there are eight men pledging this fall.

A long range goal of the chapter is to relocate the chapter house. During the summer this goal almost became a reality, but due to many difficulties arising, the plans had to be postponed.

The last *Pinion*, Delta Beta chapter's newsletter, was well received among the alumni. Efforts will be made to communicate as often as possible in the future.

STEVE KOVACS
Corresponding Secretary

LAMBDA BETA CHAPTER *Tennessee Technological University*



Homecoming 1975, has just passed. At Lambda Beta Chapter our homecoming activities are centered around the fraternity house. Each year we participate in the campus-wide

house decoration competition. It is now traditional for Lambda Beta Chapter to enter and usually win this contest. Our house decorations involve the construction of a scene in the front yard which exhibits the theme of each year's homecoming ac-

(Continued on page 15)



Happy faces at Delta Beta's Halloween Costume Party are (left to right) Little Sister Roberta Miller, Brother Jack Bates, and Little Sister Pledge Jane Mimms.

Chapter Addresses

ALPHA CHAPTER*
515 Tenth Avenue, S.E.
Minneapolis, MN 55414

BETA CHAPTER*
Box 77, Route #1
Houghton, MI 49931

GAMMA CHAPTER
Box 13, Colorado School of Mines
Golden, CO 80401

DELTA CHAPTER
c/o Dr. Thomas P. Kicher
212 Bingham, Case Western Reserve
Cleveland, OH 44106

EPSILON CHAPTER
North Gate Hall, Room 9
University of California
Berkeley, CA 94720

ZETA CHAPTER
P.O. Box 3529
Lawrence, KS 66044

IOTA CHAPTER
Student Union Building
University of Missouri
Rolla, MO 65401

MU CHAPTER*
304 Thomas Street
Tuscaloosa, AL 35401

XI CHAPTER*
1633 Monroe Street
Madison, WI 53711

OMICRON CHAPTER
Theta Tau Box, Engineering Bldg.
Iowa City, IA 52240

PI CHAPTER
Thornton Hall, University of Virginia
Charlottesville, VA 22904

RHO CHAPTER
Box 5282, State College Station
Raleigh, NC 27607

SIGMA CHAPTER*
1946 Indianola Avenue
Columbus, OH 43201

TAU CHAPTER*
1105 Harrison Street
Syracuse, NY 13210

UPSILON CHAPTER*
1322 West Cleveland
Fayetteville, AR 72701

PHI CHAPTER*
416 N. Chauncey Avenue
West Lafayette, IN 47906

CHI CHAPTER*
1614 E. Speedway Boulevard
Tucson, AZ 85719

PSI CHAPTER
Student Union Building
Montana College of Mineral Science and Technology
Butte, MT 59701

OMEGA CHAPTER*
107 Kansas City Street
Rapid City, SD 57701

GAMMA BETA CHAPTER
School of Engineering & Applied Science
The George Washington University
725 23rd Street, NW
Washington, DC 20006

DELTA BETA CHAPTER*
2106 Confederate Place
Louisville, KY 40208

EPSILON BETA CHAPTER*
478 West Alexandrine
Detroit, MI 48201

ETA BETA CHAPTER
Cullen College of Engineering
Box 7, University of Houston
3801 Cullen Boulevard
Houston, TX 77004

IOTA BETA CHAPTER*
4026 W. McNichols Road
Detroit, MI 48221

KAPPA BETA CHAPTER*
200 Hillside
Starkville, MS 39759

LAMBDA BETA CHAPTER*
513 N. Walnut Avenue
Cookeville, TN 38501

MU BETA CHAPTER*
1210 McClennan
Flint, MI 48504

NU BETA CHAPTER
c/o Dr. Harold Jebens
Ottensman Hall
University of Wisconsin-Platteville
Platteville, WI 53818

* Designates a Chapter House.



Additions to Membership

GAMMA CHAPTER

- 1193 Ronald E. VanHoose, Paris, KY
- 1194 Thomas S. Mead, III, Wichita, KS
- 1195 Jesse L. McDaniel, La Junta, CO
- 1196 Anthony A. Faoro, Pueblo, CO
- 1197 Jeffery J. Manion, Windsor, CO
- 1198 Kevin H. McCord, Grand Junction, CO
- 1199 Gregory T. Kelleher, Norwalk, CA
- 1200 Randal S. Barnes, Hayden, CO

ZETA CHAPTER

- 769 Richard E. Werp, Kansas City, KS
- 770 Leon R. Dechant, Salina, KS
- 771 Darrell O. Wigton, Girard, KS

MU CHAPTER

- 1042 Charles M. Reeves, Vernon, AL
- 1043 John E. Crowell, Jr., Hanceville, AL
- 1044 William D. Glover, Gurley, AL
- 1045 Philip D. Kimbrell, Montevallo, AL
- 1046 James E. Morris III, Tuscaloosa, AL
- 1047 Dennis R. Runyans, Ashville, AL

OMICRON CHAPTER

- 849 Thomas F. Bresaw, Cedar Rapids, IA
- 850 James W. Harris, Hattiesburg, MS
- 851 Gerald R. Newell, Iowa City, IA
- 852 Paul E. Riese, Davenport, IA
- 853 Michael C. Walliser, Lansing, IA
- 854 John R. Oehmigen, Keokuk, IA
- 855 Joseph W. Robinson, Jr., Tampa, FL

RHO CHAPTER

- 862 Dennis D. Andrews, Durham, NC
- 863 Paul Bowden, Greensboro, NC
- 864 James B. Broome, Jr., Gastonia, NC
- 865 Michael W. Everett, Jacksonville, NC
- 866 David C. Swicegood, Lexington, NC

TAU CHAPTER

- 745 Jose Samper, Bogota, Colombia, S.A.
- 746 James B. Callopy, Huntington, NY

OMEGA CHAPTER

- 793 Randy N. Burggraff, Colton, SD
- 794 Bradley K. Chase, Martin, SD
- 795 Danny R. Coon, Martin, SD
- 796 Timothy F. Haselhorst, Northville, SD
- 797 Thomas R. Helma, Riverdale, ND
- 798 Robert W. Jacobson, Salem, SD
- 799 Dale L. Kerr, Highmore, SD
- 800 Loring R. Knutson, Norfolk, NE
- 801 Kurt D. Kost, Parkston, SD
- 802 Dale G. Larsen, Colome, SD
- 803 Michael L. Linde, Custer, SD
- 804 Thomas J. Peterson, Holabird, SD
- 805 Roy D. Riskey, Mitchell, SD
- 806 Brett A. Stenson, Colome, SD
- 807 Curtis W. Struck, Dimock, SD
- 808 Randall S. Withee, Colorado Springs, CO

GAMMA BETA CHAPTER

- 548 Michael P. Hubbard, Arlington, VA
- 549 Anthony F. Yuhus, Flint, MI

EPSILON BETA CHAPTER

- 269 John T. Jones, Roseville, MI
- 270 Gordon J. MacKenzie, Detroit, MI
- 271 Monte G. Myers, Warren, MI
- 272 Terrance J. Walsh, Detroit, MI

KAPPA BETA CHAPTER

- 240 Dennis R. Anderson, Jackson, MS
- 241 Steven G. Brantley, Jackson, MS
- 242 Everett P. Hailey, Jr., Preston, MS
- 243 Basil B. Hinds, Tupelo, MS
- 244 William K. Hughey, Bay Springs, MS
- 245 Ralph H. Humphries, Durant, MS
- 246 James H. Hyatt, McComb, MS
- 247 Kevin W. Lynch, Starkville, MS
- 248 Mark E. Neumann, Vicksburg, MS
- 249 Richard E. Forbes, Hon., Starkville, MS

LAMBDA BETA CHAPTER

- 11 Charles L. Smithson, Jr., Indianapolis, IN
- 147 Arda E. Lee, Hon., Cookeville, TN

(Continued on page 15)

NOTICE OF ALUMNUS ADDRESS

Send names and addresses of any alumni you know who *may* not be receiving THE GEAR to Theta Tau Central Office, 13 Sona Lane, St. Louis, Missouri 63141.

Name _____ Chapter _____ Class _____
Year _____

Street _____

City _____ State _____ ZIP Code _____

Reported by _____ Chapter _____ Class _____
Year _____

Street _____

City _____ State _____ ZIP Code _____

Be sure the Theta Taus you know are receiving THE GEAR.

RECOMMENDED STUDENTS

Mail to Robert E. Pope, Executive Secretary, 13 Sona Lane, St. Louis, Missouri 63141. Include relatives and other recommended students at accredited schools whether or not Theta Tau yet has a chapter at that school.

I recommend that the following student(s) in engineering be considered for Theta Tau membership:

Name _____ School _____

Mailing Address _____ Major _____

_____ Expected Graduation Date _____

Remarks:

Signed _____ Chapter _____ Year _____

NOTICE OF DECEASED MEMBER

Please give as complete information as possible, including biographical data known, clippings, etc. Send to Theta Tau Central Office, 13 Sona Lane, St. Louis, Missouri 63141.

Name _____ Chapter _____ Class _____
Year _____

Address _____

Date and place of death _____

Name and address of nearest relative _____

Reported by _____ Chapter _____

Address _____

Relationship to deceased _____

CHANGE OF ADDRESS NOTICE

Send to Theta Tau Central Office, 13 Sona Lane, St. Louis, Missouri 63141.

Name _____ Chapter _____ Class _____
Year _____

Old address:

Street _____

City _____ State _____ ZIP Code _____

New address:

Street _____

City _____ State _____ ZIP Code _____

Permanent address from which mail will always be forwarded to you:

Street _____

City _____ State _____ ZIP Code _____

GIFTS TO THETA TAU

Make checks payable to Theta Tau Fraternity and mail to Robert E. Pope, Executive Secretary, 13 Sona Lane, St. Louis, Missouri 63141.

I enclose the following contribution to Theta Tau:

For the Operating Fund \$ _____

For the Founders' Memorial Fund \$ _____

Name _____ Chapter _____ Class _____
Year _____

Street _____

City _____ State _____ ZIP Code _____

ALUMNI NEWS

THE GEAR needs news about you and other alumni. Include promotions, job changes, professional honors, family news. Send to Theta Tau Central Office, 13 Sona Lane, St. Louis, Missouri 63141.

Name _____ Chapter _____ Class _____
Year _____

Address _____

News of yourself and/or others _____

WALES CONVENTION (cont.)

found many matters still awaiting action. Matters discussed included relaxing of curricular restrictions, minor Ritual amendments, and the budget for the biennium. To improve the cash flow situation, and to underwrite the continuing Fraternity program in the face of inflation and smaller average chapter size, the Convention reluctantly approved increases in fees and dues, and set earlier dues payment dates.

The Nominating Committee had worked long to solicit suggestions, to review records, and to interview candidates. It presented a well-considered slate to which were added other nominations from the floor. Some current members declined to accept nomination. In the end, the Convention elected as Executive Council members ones with the lowest average age in memory, including four new to the Council. Even the new members, however, bring a wealth of Theta

Tau experience to their new offices. Council members for the current biennium are listed on the roster on page two of this issue.

Increasing costs forced the Publications Committee to propose, and the Convention to adopt, a limited budget for THE GEAR. The Extension Committee proposed strong interim effort to acquire new chapters. On motion of the Resolutions Committee, the Convention expressed the Fraternity's thanks to those deserving such recognition of their efforts.

Finally, the new officers were installed, the Convention closed, and those present turned their attention to traveling home and to the New Year ahead, each with a stronger appreciation for the national character of our Fraternity, and a respect for its ability to make difficult decisions in a fraternal manner.

Alpha (cont.)

- 148 Frank E. Anderson, Nashville, TN
- 149 James R. Jett, Jefferson City, TN
- 150 Benjamin E. Lewis, Jr., Bluff City, TN
- 151 Richard H. Byrn, Dickson, TN
- 152 William S. Dunnebacke, Columbia, TN
- 153 David R. Jennings, Clinton, TN
- 154 Michael R. Leffel, Louisville, KY
- 155 David N. Martin, Gallatin, TN
- 156 Billy R. Milam, Oak Ridge, TN

- 19 Donald R. Tuggle, Madison, WI
- 20 Ralph E. Vosters, Appleton, WI
- 21 William A. Graves, Belmont, WI
- 22 Douglas G. Groversteen, Beloit, WI
- 23 Steven J. Hicks, Madison, WI
- 24 Richard D. Kowalski, Waukesha, WI
- 27 George J. Pruchnofski, Menasha, WI

Chapter News (cont.)

tivities. This year the theme for homecoming was "That Was the Way it Was," which is in relation to the up-coming Bicentennial Year. After a design is selected, work usually begins on Friday afternoon. The entire fraternity turns out to work on the decorations. Many Little Sisters, wives, and girl friends help with the construction. Lots of chicken wire and paper napkins are used during the building process. The house becomes the center of activity where all the brothers can meet returning alumni and welcome them back.

The following morning, which is the day of the homecoming football game, the house decorations are judged. There is a cash award for first and second place. This award is an amount that will repay all our expenses for materials. This year Lambda Beta Chapter won second place in the house decoration competition.

DALE J. HUTSELL
Corresponding Secretary

NU BETA CHAPTER

- 1 Thomas R. Amon, Elkhorn, WI
- 3 Keith K. Corso, Kenosha, WI
- 4 Gerald L. Dasser, Cleveland, WI
- 5 Kenneth G. Fries, Mequon, WI
- 6 Harold J. Jebens, Platteville, WI
- 9 Robert J. McKelvey, Lancaster, WI
- 10 Taryn S. Nall, Brownston, WI
- 11 Daron F. Patriquen, Oxfordville, WI
- 12 Peter W. Shefte, Janesville, WI
- 13 Robert W. Stenstrom, Rockford, IL
- 14 John I. Boldt, Platteville, WI
- 15 Randy J. Govier, Lancaster, WI
- 16 Jeffrey J. Mantes, Milwaukee, WI
- 17 Robert W. Tamminen, Green Bay, WI
- 18 Richard R. Tubesing, Brookfield, WI

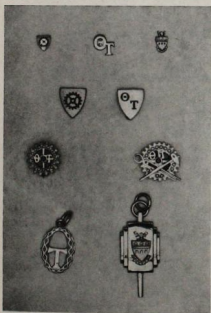
THETA TAU FRATERNITY
13 Sona Lane
Saint Louis, Missouri 63141

Address Correction Requested
Return Postage Guaranteed

Non-Profit
U.S. POSTAGE
PAID
Menasha, Wisconsin
Permit No. 5

To Parents of Theta Taus:

Your son's GEAR of Theta Tau is sent to his home after graduation. We hope you enjoy looking through it. If he no longer lives at home, please send his permanent address to the fraternity's Central Office. Thank you.



Jewelry available through Central Office: For information and prices contact Theta Tau Central Office, 13 Sona Lane, St. Louis, Mo. 63141.

ALUMNI FIELD SECRETARIES NAMED

During the summer of 1975 a new program was established and communicated to all members in a leaflet mailing. The Alumni Field Secretary Program appointments made thus far are as follows:

ALABAMA—J. M. (Mickey) Trimm, *Mu* '72, 217 Mt. Vernon Village, Hueytown, AL 35020

INDIANA—Jeffrey W. Lusk, *Sigma* '74, 927½ Crescent Ave., Fort Wayne, IN 46805; C. Cade Verner, Jr., *Mu* '49, 7340 Steinmeier Dr., Indianapolis, IN 46250

LOUISIANA—John W. Catledge, *Kappa Beta* '75, 868 Martin Behrman Ave., Apt. 8, Metairie, LA 70005

MASSACHUSETTS—Richard D. Ruh, *Phi* '70, 121 Florissant Ave., Farmingham, MA 01701

OHIO—Charles G. Nash, *Sigma* '75, 566 Torrence Lane, Apt. 2, Cincinnati, OH 45208

Any members interested in this program should contact the Executive Secretary for further information.