

The GEAR of THETA TAU



SEVENTIETH ANNIVERSARY CONVENTION

December 27, 28, 29, 30, 1974
Indianapolis, Indiana



INDIANAPOLIS MUSEUM OF ART

FALL 1974

VOLUME LXIII

NUMBER 1



Theta Tau Directory

Theta Tau Fraternity was founded at the University of Minnesota, Minneapolis, Minnesota, on October 15, 1904, by: ERICH J. SCHRADER; ELWIN L. VINAL; WILLIAM MURRAY LEWIS; and ISSAC B. HANKS.

PAST GRAND REGENTS

- | | |
|---|--|
| ERICH J. SCHRADER, <i>Alpha</i> , (1904-1919)* | DONALD D. CURTIS, <i>Omicron Hon.</i> , (1950-1952)* |
| GEORGE D. LOUDERBACK, <i>Epsilon</i> , (1919-1925)* | JAMISON VAWTER, <i>Zeta</i> , (1952-1954)* |
| J. SIDNEY MARINE, <i>Eta</i> , (1925-1927)* | A. DEXTER HINCKLEY, <i>Theta</i> , (1954-1958), 154 East |
| RICHARD J. RUSSELL (DR.), <i>Epsilon</i> , (1927-1931)* | River Road, Guilford, Conn. 06437 |
| FRED COFFMAN, <i>Lambda</i> , (1931-1935)* | CHARLES W. BRITZIUS, <i>Alpha</i> , (1958-1962), 662 Crom- |
| HERMAN H. HOPKINS, <i>Beta</i> , (1935-1937), 3320 Culver | well Avenue, St. Paul, Minn. 55114 |
| Avenue, Evanston, Ill. 60201 | WILLIAM K. REY (PROF.), <i>Mu</i> , (1962-1966), P.O. Box |
| JOHN M. DANIELS (DR.), <i>Nu Hon.</i> , (1937-1939)* | 664, University, Ala. 35486 |
| RUSSELL G. GLASS, <i>Sigma</i> , (1939-1946), Saddleback | C. RAMOND HANES, <i>Sigma</i> , (1966-1968), 2190 S. Wapak |
| Lane, Gates Mills, Ohio 44040 | Road, Lima, Ohio 45805 |
| RALPH W. NUSSE, <i>Zeta</i> , (1946-1948), 609 West Dart- | CHARLES E. WALES (DR.), <i>Epsilon Beta</i> , (1968-1972), |
| mouth, Kansas City, Mo. 64113 | 113 Webster St., Morgantown, W.Va. 26505 |
| NORMAN B. AMES, <i>Gamma Beta</i> , (1948-1950)* | * Deceased. |

EXECUTIVE COUNCIL

- | | |
|-------------------------|--|
| GRAND REGENT | GEORGE G. DODD (DR.), <i>Kansas</i> '60 |
| | 29451 Cunningham Dr., Warren, Mich. 48092 |
| GRAND VICE REGENT | JOHN M. DEALY (DR.), <i>Kansas</i> '58 |
| | 355 Grosvenor Ave., Montreal 215, Quebec, Canada |
| GRAND SCRIBE | ROBERT E. POPE, <i>Kansas</i> '52 |
| | 13 Sona Lane, St. Louis, Mo. 63141 |
| GRAND TREASURER | CHARLES W. BRITZIUS, <i>Minnesota</i> '33 |
| | 662 Cromwell Ave., St. Paul, Minn. 55114 |
| GRAND MARSHAL | FRED E. ARMSTRONG, JR., <i>Alabama</i> '61 |
| | P.O. Box 80667, Atlanta, Ga. 30341 |
| GRAND INNER GUARD | ALLAN E. HREBAR (DR.), <i>Purdue</i> '65 |
| | 327 Stratford Ave., Pittsburgh, Pa. 15232 |
| GRAND OUTER GUARD | STEPHEN J. BARTH, <i>Tennessee Tech</i> '67 |
| | 230 No. Franklin, Greensburg, Ind. 47240 |
| STUDENT MEMBER | THOMAS R. HERMAN, <i>Louisville</i> '73 |
| | 2106 Confederate Pl., Louisville, Ky. 40208 |
| DELEGATE-AT-LARGE | CHARLES E. WALES (DR.), <i>Wayne State</i> '53 |
| | 113 Webster St., Morgantown, W.Va. 26505 |

CENTRAL OFFICE

Robert E. Pope, *Kansas* '52, Executive Secretary, 13 Sona Lane, St. Louis, Mo. 63141

REGIONAL DIRECTORS

- | | |
|----------------|--|
| NORTHERN | LAWRENCE F. FELDSEN, <i>Minnesota</i> '62 |
| | 3503 Richmond, St. Paul, Minn. 55112 |
| CENTRAL | RALPH H. WALES (PROF.), <i>Wayne State</i> '54 |
| | 16510 Hiland Trail, Linden, Mich. 48451 |
| WESTERN | JACK E. PAYNE, <i>Utah</i> '62 |
| | 4363 Wessex Drive, San Jose, Calif. 95123 |
| SOUTHERN | CHRIS KING, <i>Tenn. Tech</i> '73 |
| | 626 N. Washington, Cookeville, Tenn. 38501 |



The Gear of Theta Tau

FALL 1974

VOLUME LXIII NUMBER 1

JAMES M. WALTER, *Editor-in-Chief*
2534 Honeybee Lane
Memphis, Tennessee 38134

Contents

Theta Tau Directory	2
Wide Open Spaces	4
Putting It Together	5
Past Grand Regent Daniels Dies	6

Alumni News

<i>Linville Heads Tau Beta Pi</i>	7
<i>Petersen Retires—VP Freeport Minerals</i>	7
<i>Barnes GM of Titanium Enterprises</i>	8
<i>Slifka Receives SAE Award</i>	8
<i>Neubauer Receives Research Award</i>	8
<i>Speir Named Exec VP—Friend, Inc.</i>	9
<i>Alumni Notes</i>	9

Omega

<i>In Memoriam</i>	23
--------------------------	----

Chapter News	24
--------------------	----

Alpha

<i>Additions to Membership</i>	26
--------------------------------------	----

Kappa Beta's Folder System	28
----------------------------------	----

Convention Set for Indianapolis	31
---------------------------------------	----

● THE GEAR is the official publication of Theta Tau, National Professional Engineering Fraternity, and is published fall and spring. The magazine is an educational journal devoted to matters of Fraternity interest and is sent at no cost to alumni whose addresses are on record. ● Send change of address to 13 Sona Lane, St. Louis, Mo. 63141. ● THE GEAR is printed by The Collegiate Press, Menasha, Wis. Third class postage has been paid at Menasha, Wis. 54952.

WIDE OPEN SPACES

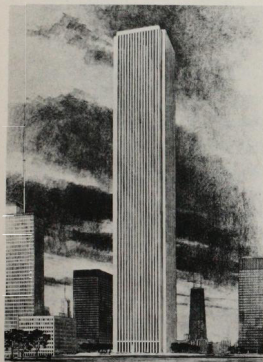
Coordinating the movement of 4000 corporate employees into more than 40 floors of new office space is a task laced with potential problems

enough, but when 80% of those employees are to be located utilizing a modified open office concept, the job appears immensely more difficult. That was the project facing Brother Ed M. Bruzelius, *Kansas '34*, when he went on assignment as project coordinator for the Standard Oil Co. (Ind.) new headquarters building in Chicago.

The Standard Oil skyscraper is readily noticeable to anyone viewing the skyline of Chicago. The building is the fourth tallest in the world, encompassing 80 floors. It is the only skyscraper in the world that is completely faced with marble.

There could be no question that the movement of the international headquarter's management of Standard's principal subsidiaries had to be a well-coordinated scheme. So a two-year test office for a small group of marketing staff provided much of the data input into how an open office concept could be applied.

Office layout has gone through some dramatic changes in the past ten years. The stereotyped layouts with private executive offices depending on organizational rank has partially given way to a new concept with personnel stationed according to work flow and communication patterns. Utilization of partition walls which are readily disassembled and then reassembled as need dictates has grown. Some initial applications of the concept were failures because of lack of privacy, noise levels, and non-uniform corridors. Modifications used at Standard Oil included more and higher screening, sound-absorbent partitions, and a more rectilinear layout. The concept is growing, and more offices of the future are sure to receive the benefits of "office landscaping."



Brother Ed M. Bruzelius, *Kansas '34*, project coordinator for the Standard Oil Co. (Ind.) new headquarters building in Chicago, will soon have 38 years of service with Standard Oil including refinery engineering, purchasing, market coordination, and the building project. Prior to his appointment to the building project he was coordinator of trade relations for American Oil Co. and Standard of Indiana. He was a Lieutenant Commander in the U.S. Naval Reserves in World War II, and was recalled to active duty during the Korean War. He has a professional license in two states, and is in *Who's Who in Engineering*. He is the proud grandfather of seven grandchildren.



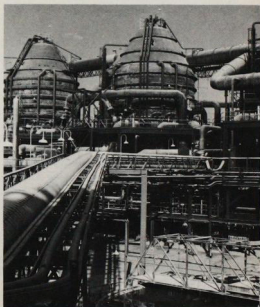
putting it together

Changing the economics of producing minerals such as boron and soda ash involves high risk factors requiring high probabilities of success. A pilot plant operation can resolve the latter, but only executive-level decision making can evaluate the risk of overall success. Brother Dean McGee, *Kansas '26*, chairman of the board of Kerr-McGee Corp., made the decision in 1967 by acquiring American Potash and Chemical and its Searles Lake (Calif.) dried lake bed of mineral resources. Then he put his staff to work developing the technical plan to obtain a competitive and viable operation.

Soda ash, a basic ingredient in the manufacture of glass, fiber glass, and hundreds of intermediate chemicals, has been made synthetically for years. New pollution standards have changed the economics of production so that a large scale facility utilizing the natural sources is feasible. The brine in the Searles Lake bed, along with trona (an ore found underground in Wyoming) are both natural sources of soda ash. And so the decision made in 1967 appears to be a correct one. Large scale production facilities coupled with unit train movement to the West coast for boat transport to the East coast as well as to foreign countries are the factors in a \$100 million expansion at Searles Lake announced in early 1974.

The expansion program is designed to increase output of all the minerals found in the brine. Soda ash production will be increased from 145,000 to 1,300,000 tons per year. The process design for the soda ash expansion has been developed from pilot plant operations. Sodium bicarbonate is produced by contacting solution-mined brine and burkellite liquor from the facility's salt cake operation with CO_2 . The solution is dewatered with the remain-

ing mother liquor returned to the lake to maintain hydrology. The sodium bicarbonate is then calcined (recovering CO_2) and crystallized to sodium carbonate monohydrate. The monohydrate is calcined and the final product screened to meet particle size considerations. Bulk storage and railcar loading facilities complete the process design.



Brother Dean A. McGee, *Kansas '26*, chairman of the board and chief executive officer of Kerr-McGee Corp., Oklahoma City, has been called that company's biggest asset by *Forbes* magazine. In addition to holding director positions on many of Kerr-McGee's subsidiaries, Brother McGee has held positions in numerous other organizations including trustee of the California Institute of Technology, the Midwest Research Institute, and the Kansas University Endowment Association. He holds director positions with General Electric Co. and Oklahoma Natural Gas Co. He is the recipient of numerous awards including honorary doctorates from the Colorado School of Mines and Oklahoma City University.

Past Grand Regent Daniels Dies

Past Grand Regent John Morrow Daniels, *Nu Honorary '26* (see below), passed away at his home in Sarver, Pa. on May 17, 1973. To all who knew him, Brother Daniels will be greatly missed for his contributions both to Theta Tau and to the college admissions field.

Brother Daniels was born in Derry Township, Pa. on August 31, 1897. He attended Kiski Preparatory School, Freeport High School, the University of Pennsylvania, and the University of Pittsburgh, receiving his Bachelor of Science degree in civil engineering from the latter in 1922. In 1948, Duquesne University awarded him an honorary degree of Doctor of Education.

Immediately after receiving his Bachelor's Degree, Brother Daniels joined the staff of the then Carnegie Institute of Technology. In 1929 he was promoted to assistant professor. In 1939 he was appointed Director of Admissions at Carnegie and headed the committee on scholarships, grants, and prizes; positions he held until his retirement in 1963. Upon retirement, he was honored with the distinguished title of Director of Admissions Emeritus. While at Carnegie, he also served as Acting Director of the Division of Student Affairs, Acting Dean of Students, and Director of Summer Sessions. Following his retirement, he served

several years as Director of Admissions for Mount Mercy College in Pittsburgh, finally retiring to his home at Sarver.

Early in his career Dr. Daniels worked as a consultant for the American City Engineering Company and the Pennsylvania Railroad Company. While at Carnegie he was active in research, working on projects for the National Safety Council, the P.P.G. Co., and the Westinghouse Electric and Manufacturing Company.

He was a past president of the Middle States Association of Collegiate Registrars and Officers of Admission. He was also active in the American Association of Collegiate Registrars and Officers of Admission, and was on the industrial scholarship committees of eight companies as well as being a trustee of Kiskiminetas Springs Preparatory School, Saltsburg.

Brother Daniels was Past Master of Free and Accepted Masons Armstrong Lodge No. 239, Freeport; Coudersport Consistory and Syria Temple, Pittsburgh. He was also a member of Phi Delta Theta, Theta Xi, Alpha Phi Omega, Omicron Delta Kappa, Phi Nu, and Phi Kappa Phi.

Brother Daniels is survived by his wife, Alice, now residing in Louisville, Ky.; a daughter; and a son, Lt. Colonel John Daniels, Jr., *Iota '55*.



Brother John Morrow Daniels served Theta Tau in many positions during his career. In 1926, while on the faculty of Carnegie Institute of Technology (now Carnegie-Mellon University), John Daniels was nominated and elected to honorary membership in Theta Tau by the men of Nu Chapter. He was first elected to the Theta Tau Executive Council as Grand Outer Guard in 1931, and served successively as Grand Inner Guard, Grand Vice-Regent, and Grand Regent (1937-39). As Grand Regent, he presided at the installation of Delta Beta Chapter in 1939. In 1946, the Fraternity honored him by naming the Sixteenth Biennial Convention the John Daniels Convention. From 1949 to 1958 he also served as Grand Marshal.



alumni news

Linville Heads Tau Beta Pi

Thomas M. Linville, *Virginia '26*, has been named president of Tau Beta Pi for the term 1974-78. Brother Linville was a member of the New York State slate of candidates for the Tau Beta Pi Executive Council which was elected at the 1973 Convention and was named to head the Council by its members.

Brother Linville retired from General Electric in 1966 after 40 years with the firm. At the time of his retirement he held the position of manager of Research Application at the General Electric Research Laboratory, Schenectady, N.Y. During his career he served as co-chairman of the corporate task force that planned the decentralization of GE's motor businesses and headed the corporate task force that developed GE's Management Development Institute at Crotonville, N.Y.

At General Electric, Brother Linville specialized in design and development of motors and control systems, engineering and research administration, and engineering education. He is the author or co-author of nearly a dozen books and scores of papers in the fields of engineering and management, and has been awarded seven patents for his work. In addition to his professional career, he has been a leader of numerous national and state professional engineering societies, and has established a long record of contributions to community and welfare service organizations.



Petersen Retires — VP Freeport Minerals

Harlof C. Petersen, *Minnesota '33*, retired as vice president for exploration, Freeport Minerals Co., on Dec. 1, 1974. During his 40 year career with the firm, Brother Petersen held positions of manager of the then newly formed Oil and Gas Div.; president of Freeport Oil Company; and president of Freeport of Australia, Inc.

As president of Freeport of Australia, he spent the six years from 1965 to 1971 heading the firm's efforts in the period of discovery and development of large deposits of iron, bauxite, nickel, coal, and uranium which resulted in Australia becoming one of the leading mineral resource countries of the world. Included was the large North Queensland lateritic nickel deposit. Brother Petersen plans to spend his retirement years in New Orleans, La., enjoying golf and fishing.



Barnes GM Titanium Enterprises

Ellis O. Barnes, *Louisville '43*, has been named general manager of Titanium Enterprises, a jointly owned venture of American Cyanamid Co. and Union Carbide Corp. Brother Barnes joined Union Carbide in 1943 and has held a number of management positions. Most recently he was director of development and engineering for the chemical division.

Brother Barnes is past chairman of the Pulp Chemical Assoc. and past chairman of the environmental technical subcommittee of the Fatty Acids Producers Council. He is co-author of a number of articles on industrial chemistry and has addressed various chemical societies in his field.

Titanium Enterprises is located in Green Cove Springs, Fla. It mines, processes, and markets titanium ores and other heavy minerals found in northern Florida.



Slifka Receives SAE Award

Richard L. Slifka, *Wisconsin '51*, is one of four GM engineers to receive the SAE Ralph H. Isbrandt Automotive Safety Engineering Award in 1974. Brother Slifka developed the sensor system for GM's air cushion restraint system and co-authored the paper "General Motors' Driver Air Cushion Restraint System" presented at a SAE Automotive Engineering meeting in May, 1973. The sensor, which determines when an accident occurs, was in production on some 1974 GM cars.

Brother Slifka is a staff engineer with Delco Electronics Div. of GM, located in Kokomo, Ind. He developed the sensor system while located at the Delco Plant in Oak Creek, Wis.



Neubauer Receives Research Award

Dr. Loren W. Neubauer, *Minnesota '26*, received the L. J. Markwardt Wood Engineering Research Award of the Forest Products Research Society in June, 1974. The award, established to encourage research and promote knowledge of wood in the engineering field, was awarded to Brother Neubauer for his work in authoring a paper entitled "A Realistic and Continuous Wood Column Formula."

Brother Neubauer is a Professor Emeritus of Agricultural Engineering at the University of California, Davis. He has authored more than 165 articles as well as a text, "Farm Building Design." His major interests include farm structures, construction material strength and durability, and solar radiation. He is listed in American Men of Science, *Who's Who in Engineering*, and is a member of numerous societies.



Speir Named Exec VP — Friend, Inc.

W. B. Speir, *Alabama* '49, has been named executive vice president of John H. Friend, Inc. Brother Speir, who previously was manager of industrial and urban planning with the Rust Engineering Co., will manage the newly opened Birmingham, Ala. office of J. H. Friend, to be known as the Speir Div. Services provided by the firm will include real estate planning and marketing research.

The Gulf Coast Division office of the firm is located in Mobile, Ala. That division is headed by John Friend, Jr., who has been providing marketing and economic research for a number of years.



Alumni Notes

MINNESOTA

Alpha

RAYMOND J. BROS, '19, lives in Minneapolis, Minn.

EDWARD H. COE, '19, is retired and living in Evanston, Ill.

FRED ENKE, '21, resides in Tucson, Ariz.

ALEXANDER M. GOW, '23, is retired and living in Kansas City, Mo.

I. H. MARSHMAN, '24, is a retired patent lawyer and lives in Swarthmore, Penns.

ELMER C. SLAGLE, '25, lives in Minneapolis, Minn.

LAWRENCE V. JOHNSON, '27, resides in St. Paul, Minn.

RUSSELL L. SORENSON, '27, is a construction contractor in Albert Lea, Minn.

GEORGE THWING, JR., '28, is retired and resides in Laguna Niguel, Calif.

CURTIS E. CRIPPEN, '30, is retired as president of C.M. St. Paul & P.R.R. Co. and lives in Wilmette, Ill.

GEORGE W. LANGENBERG, '30, is retired and living in Fort Wayne, Ind.

I. E. SOMMERMEYER, '31, is retired from UAL and lives in Gulf Breeze, Fla.

COL. WEBSTER F. SOULES, '31, lives in Buchanan, Mich.

CLIFFORD O. ANDERSON, '32, recently retired as professor of mechanical engineering at North Dakota State University, Fargo. He was named a professor emeritus of mechanical engineering by the North Dakota State Board of Higher Education on July 1.

ALLAN A. HUTCHINGS, '33, is retired and living in Meadowbrook, Penns.

MARVIN G. SEDAM, '33, is retired and residing in York, Penns.

B. W. THOMPSON, '35, is vice president, treasurer, and chief engineer with Pfeifer and Shultz, Inc., Minneapolis. He lives in Minneapolis.

REMUS N. BRETOL, '45, is a staff assistant for programs, NASA-Ames Research Center, Calif. He resides in Palo Alto.

DONALD H. REGELIN, '45, is vice president of Zimmermann & Jansen, Inc., Pittsburgh, Pa. He lives in Pittsburgh.

ROBERT W. ROSENE, '45, is a partner in Bonestroo, Rosene, Anderlik and Assoc., St. Paul, Minn. He lives in St. Paul.

DONALD C. WILFAHRT, '45, operates and owns a hardware store in New Ulm, Minn.

GERALD BERGER, '46, is a project manager with 3M Co., St. Paul, Minn. He resides in White Bear Lake, Minn.

W. R. JEROME, '47, now lives in Whittier, Calif. He is with Autonetics Div. of Rockwell International.

PAUL J. SLIGHT, '51, is a structural engineer with Hirsch, Stevens & Samuelson, Hudson, Wis.

THE GEAR OF THETA TAU

JOHN H. STOLPESTAD, '51, is with Rockwell International, Los Angeles Div. He lives in Rancho Palos Verdes, Calif.

CHARLES E. GORGEN, '62, now lives in Delafield, Wis. He is the manager of sales, Hoist Div., Harnischfeger Corp., Milwaukee, Wis.

DAVID L. VOXLAND, '54, lives in Kenyon, Minn. He is a project superintendent with Fegles Power Service Int'l., Puerto Rico.

CAPT. GERALD J. DITTBERNER, '64, is stationed with Air Force Global Weather Central, Offutt AFB, Nebr. He resides in Bellevue, Neb.

MICHAEL S. EGGERT, '65, is an engineering supervisor with Honeywell, Inc. He lives in Minneapolis, Minn.

WILLIAM H. GOLLWITZER, '65, lives in Chelmsford, Mass., and is a staff engineer with Raytheon Co., Bedford, Mass.

DAVID L. GELLATLY, '65, is a product marketing manager with American Microsystems, Santa Clara, Calif. He resides in San Jose, Calif.

DR. KENYON KRAMER, '65, is an ophthalmologist with the U.S. Army stationed at Walter Reed Hospital. He lives in Silver Spring, Md.

CORNELIUS KROLLMAN, '65, is the assistant maintenance supt. at the National Steel Pellet Plant of The Hanna Mining Co. He lives in Hibbing, Minn.

WILLIAM FREDRICKSON, '66, is district manager and oil industry manager with Byron Jackson Pump in Europe. His wife and two daughters reside with him in the Netherlands.

EDWARD J. KOTRICH, JR., '66 lives in Hammond, Ind.

ARTHUR E. BRANDLI, '67, is self-employed in Warroad, Minn.

WILLIAM B. MCKUSKY, '68, is a design engineer with the Tennant Co., Minneapolis. He resides in Osseo.

RICHARD W. ROOME, '68, is a software engineer with Semi, Inc., Phoenix, Ariz.

MARCEL E. HOFFMANN, JR., '70, is a project manager with Hormel, Austin, Minn. He resides in Sleepy Eye, Minn.

K. A. ROGERS, '19, is retired. He resides in Alexandria, Va.

WALTER C. LAWSON, '23, lives in Phoenix, Ariz.

WILLIAM W. McLAUGHLIN, '23, is retired and living in Englewood, Fla.

ELDRED E. WARNER, '25, has retired in Sun City, Ariz.

H. CARROLL WEED, '25, is retired and lives in Phoenix, Ariz.

J. S. WESTWATER, '34, is senior vice president of Cleveland Cliffs Iron Co. He resides in Lakewood, Ohio.

LT. GEN. WILLIAM C. GRIBBLE, JR., '38, is a chief of engineers with the U.S. Army, Washington, D.C. He lives in Fort Myer, Va.

ALBERT RAITZER, '40, is the manager of the materials engineering dept., The Trane Co., LaCrosse, Wis. He resides in Coon Valley, Wis.

WILLIAM E. WIVELL, '41, resides in Clinton, Iowa. He is a self-employed consulting engineer.

HENRY BEARD, '44, is vice president and general manager, Mettill Machinery Div., Pennwalt Corp. He makes his home in Glenview, Ill.

COL. BRIAN B. O'NEILL, '47, is with the Corps of Engineers, Ft. Huachuca, Ariz.

WILLIAM B. CARY, '48, lives in Fairfield, Conn. He is an executive vice president with Paine, Webber, Jackson & Curtis, Inc., New York, N.Y.

DONALD J. LEONARD, '49, is self-employed and lives in Sanford, N.C.

ALAN F. WALTER, '50, resides in Las Vegas, Nev.

RONALD L. MCKEE, '56, is living in Bethesda, Md. He is a publications specialist with I.B.M., Gaithersburg, Md.

LOUIS N. SCHEMMELE, '56, is president of L. N. Schemmel & Assoc., Grand Rapids, Mich.

LYLE P. TONNE, JR., '56, is owner of Tonne Engineering Co., Edmonds, Wash.

MAJ. VERNELLE T. SMITH, '59, is in the Office, Chief of R&D, U.S. Army, Washington, D.C. He lives in Alexandria, Va.

BRUCE R. BARITTER, '61, resides in Tokyo, Japan, as service engineering manager, Caterpillar-Matsubishi.

MICHIGAN TECH

Beta

WILLIAM J. HARRIS, '12, is retired and lives in South Bend, Ind.

FALL 1974

MARVIN B. SORENSON, '63, is the manager of quality control for the Sturgis Foundry, Sturgis, Mich.

KENNETH J. LUTZ, '65, is now president of Adventures in Achievement, San Jose, Calif.

DAVID W. STALLARD, '65, lives in Rocky River, Ohio. He is vice president of sales and engineering, Stearns Manufacturing Co., Flat Rock, Mich.

RONALD E. STARR, '67, is president of Educare Pre-School Centers, Toronto, Ontario. He lives in Mississauga, Ontario.

NELS BAKER, '68, is a marketing manager with The Carborundum Co., Niagara Falls, N.Y. He resides in Tonawanda, N.Y.

R. WAYNE COX, '68, is with Bell Telephone of Canada. He lives in Waterloo, Ontario, Canada.

DANNY L. BOOTH, '69, lives in Flint, Mich., and is a design engineer with Gould Engineering, Inc.

JACK K. ROBINSON, '70, is a project engineer with McFarland, Johnson, Gibbons Eng. Inc., Binghamton, N.Y. He makes his home in Greene, N.Y.

MICHAEL T. SUTKOWI, '70, is a mechanical engineer with Chevrolet Motor Div., Bay City, Mich.

GLENN S. BENSON, '73, is with Morgenroth & Assoc., Inc., Boston, Mass. He lives in Walpole, Mass.

SCOTT R. KATER, '73, is a management trainee with Kelsey-Hayes Co., Kingsway, Ohio. He resides in Fremont, Ohio.

LOUIS J. TROHA, JR., '73, lives in Bloomington, Minn. He is a sales engineer with Carrier Air Conditioning, Minneapolis, Minn.

THOMAS W. CARLSON, '74, has enrolled in the School of Dentistry at the University of Michigan.

COLORADO MINES

Gamma

JAMES B. LOWELL, '08, resides in retirement in Worcester, Mass.

ALAN KISSOCK, '12, lives in Sharon, Conn.

CHARLES R. VORCK, '16, is retired and living in Tucson, Ariz.

HAROLD E. MUNN, '17, is a retired consulting mining engineer living in Santa Cruz, Calif.

R. J. MECHIN, '19, resides in New York City.

RUPERT B. LOWE, '22, lives in Locust, N.J.

P. M. SHERIGER, '23, is spending his retirement in Grosse Isle, Mich.

ARTHUR D. SWIFT, '23, lives in Pompano Beach, Fla.

M. P. HUNTING, '26, is with Amoco Production Co., Tulsa, Okla.

V. L. MATTSO is residing in Estes Park, Colo. where he is a self-employed mining engineering consultant.

CLEMENT A. WEINTZ, '27, is an independent geologist living in Tulsa, Okla.

DAN H. GRISWOLD, '30, is an associate with Foundation Sciences, Inc., Portland, Ore.

JOHN L. ROBINSON, '31, is a self-employed mining consultant. He resides in Tucson, Ariz.

WALTER H. ZWICK, '32, is retired and living in Portland, Ore.

L. D. KNILL, '33, resides in Dallas, Tex.

EDGAR H. JEFFRIES, '34, is retired from Midland Ross Corp., and living in Hendersonville, N.C.

TED W. SESS, '34, is president of Airdraulic Industrial Products, Inc., San Mateo, Calif.

JAMES COLASANTI, '35, is president and treasurer of Metal Treating & Research Co., Denver, Colo.

T. P. TURCHAN, '35, is retired and living in Pinehurst, N.C.

JACK PARDEE, '36, resides in Albuquerque, N.M. He is a mining engineer with the U.S. Forest Service.

LEWIS D. ANDERSON, '39, is the chief of maintenance for the National Park Service, Hawaii National Park, Hawaii.

F. W. MANN, '43, is a self-employed engineer. He resides in Council Bluffs, Iowa.

FREDERICK C. ALDRICH, '48, lives in Findlay, Ohio. He is the manager of environmental control, Marathon Oil Co., Findlay, Ohio.

PAUL A. HODGES, '51, is the assistant to the president, Anamax Mining Co., Tucson, Ariz.

DAVID R. COLE, '52, is the manager of the Colorado Mining Association, Denver. He lives in Lakewood, Colo.

THE GEAR OF THETA TAU

EDWARD W. HEATH, '54, is a geologist with Aztec Oil Co., Dallas, Tex. He resides in Richardson, Tex.

ROBERT B. STECK, '57, resides in Belmar, N.J. He is an account executive with Harris Upham & Co., New Shrewbury, N.J.

ARTHUR J. PANSZE, JR., '61, now resides in Golden, Colo.

ROBERT L. DUNN, '65, is with E. I. DuPont de Nemours & Co., Wilmington, Del.

H. E. SEBASTIAN, JR., '66, resides in Houston, Tex.

JAMES W. COLZANI, '67, now lives in Pueblo, Colo.

ROBERT S. GLIDDEN, '67, is with Sipi Metals Corp., Chicago, Ill. He lives in Mt. Prospect, Ill.

ENS. ORAL D. STAMAN, '72, is a naval flight officer stationed in Guam.

J. H. BAIRD, '32, lives in Shaker Heights, Ohio.

W. R. PERSONS, '32, is chairman of the board, Emerson Electric Co., St. Louis, Mo.

CHARLES J. HUNTER, '33, is retired and residing in Sarasota, Fla.

JOHN O. GEISSBUHLER, '35, lives in Lyndhurst, Ohio.

FRANK P. CONVERSE, JR., '40, is president of Great Lakes Construction Co., Cleveland, Ohio.

NYAL W. DEEMS, '41, lives in Statesville, N.C. He owns and operates the Statesville Travel Agency.

RICHARD E. PANEK, '42, is vice president of Dunbar Construction Co., Cleveland, Ohio. He lives in Fairview Park, Ohio.

WARREN E. RUPP, '42, is president of The Warren Rupp Co., Mansfield, Ohio.

MILT POLLOCK, '43, lives in Garrettsville, Ohio.

JACK M. YOUNG, '43, is with ATO Inc., Willoughby, Ohio. He lives in Cleveland Heights, Ohio.

N. T. SAWDEY, '45, is a division projects engineer with Republic Steel, Cleveland, Ohio. He resides in Euclid, Ohio.

H. WILLIAM MERRITT, '46, is a consultant in public mass transit. He lives in Arlington, Va.

DAVID H. BUERKEL, '48, is president of Applied Energy Systems, Bala Cynwyd, Penns. He resides in Newtown Square, Penns.

PAUL C. MENSTER, '48, lives in Lyndhurst, Ohio. He is a self-employed consulting engineer.

GEORGE P. DONOVAN, '49, resides in Ballston Lake, N.Y. He is a regional general manager with State Equipment Corp., Albany, N.Y.

RALPH E. FRANKLIN, '49, is vice president for construction, Allen & O'Hara, Inc., Memphis, Tenn. He makes his home in Germantown, Tenn.

ROBERT C. MILLER, '50, lives in Titusville, Fla., and is an aerospace engineer with NASA, Kennedy Space Center.

WILLIAM P. NEWDOME, '50, is president of Industrial-Technical Sales & Service, Inc., Mansfield, Ohio.

DONALD L. PETERSON, '51, is sales manager with Economy Electric, Youngstown, Ohio. He lives in Canfield, Ohio.

CASE WESTERN

Delta

OTTO F. SCHRAMM, '12, lives in Rocky River, Ohio.

GEORGE M. LIEBER, '19, is retired and living in St. Augustine, Fla. He and Mrs. Lieber celebrated their golden wedding anniversary on Dec. 5, 1973.

GEORGE P. BINDER, '20, lives in Cleveland Heights, Ohio.

JOHN E. KLOSS, '23, resides in Conneaut, Ohio.

PAUL F. PFAU, '24, lives in Grafton, Mass.

JOSEPH FREASE, '26, lives in Hartville, Ohio, and is with the law firm, Frease & Bishop.

ROBERT H. GORDON, '26, "specializes in golf" as he lives in retirement in Sun City Center, Fla.

GRAYUM E. BING, '27, lives in Vero Beach, Fla.

JOSEPH P. DITCHMAN, '27, is retired and living in Bratenahl, Ohio.

ANDREW G. THAILING, '28, is the head, civil engineering dept., Dyer & Moody, Inc., Baker, La. He resides in Baton Rouge, La.

ROY N. ENVALL, '30, has moved to Pompano Beach, Fla.

GORDON N. GRAY, '31, is retired and living in Roanoke, Va.

FALL 1974

JOSEPH L. BOGAR, '52, lives in Utica, N.Y.

THE REV. GERALD F. CAVANACH, '53, is an associate professor of management, Wayne State University, Detroit, Mich.

JOHN MURPHY, '55, resides in University Heights, Ohio. He is manager of manufacturing, The Owen Bucket Co., Cleveland, Ohio.

MURRAY S. GERTNER, '59, now lives in Mendham, N.J.

LOUIS W. COHEN, '66, is the director, computer services, Wander Sales, Inc., Pittsburgh, Penns. He lives in McKeesport, Penns.

ROBERT C. DOLEZAL, '68, is with Honeywell Info. Systems, Waltham, Mass.

N. A. NILSSON, '67, is with Adrian Construction Co., Dayton, Ohio. He lives in Centerville, Ohio.

FRANK C. SILLAG, '68, resides in Lyndhurst, Ohio. He is manager, continuation engineering, Bailey Meter Co., Wickliffe, Ohio.

MICHAEL KOWNACKI, '69, is attending the University of Florida, Gainesville, Fla.

ROGER A. WING, '69, lives in Dayton, Ohio.

THOMAS L. MICHAELS, '71, lives in Roswell, Ga. He is a sales engineer with Union Metal Mfg. Co.

EDWARD J. TATMAN, '71, lives in Chicago, Ill. and is a project engineer with S & C Electric Co.

JAMES F. SOEDER, '72, is enrolled in graduate school at Case Western Reserve.

RONALD H. SNYDER, '73, is a junior project engineer with Chase Brass & Copper Co., Inc., Cleveland, Ohio.

EDWARD G. VASOLD, '73, is an electronic engineer with Motorola, Schaumburg, Ill. He lives in Arlington Heights, Ill.

BERKELEY

Epsilon

DR. FRANCIS E. VAUGHAN, '12, is president of VEMCO Corp., Pasadena, Calif.

CHESTER A. ALLEN, '13, is living in Santa Paula, Calif., and reports he is enjoying being a "rock hound" in his retirement years.

V. A. BRUSSOLO, '20, lives in Tucson, Ariz. and is a resident mining engineer for the U.S. Gov't.

ROBERT P. MILLER, '20, is a retired petroleum geologist. He resides in Healdsburg, Calif.

DR. THOMAS L. BAILEY, '21, is a self-employed geologist and lives in Ventura, Calif.

J. H. ASHLEY, '22, is retired and lives in Laguna Beach, Calif.

ALFRED LIVINGSTON, JR., '22, lives in Olympia, Wash. He is the acting curator of the Earth Science Museum in Olympia.

JAMES B. CHAMBERLAIN, '24, is retired and living in San Marino, Calif.

W. G. DONALDSON, '24, lives in Berkeley, Calif.

WILLIAM MAGUIRE, JR., '24, lives in retirement in Stockton, Calif. He and his wife celebrated their golden wedding anniversary on Aug. 12, 1973. They have two married daughters and six grandchildren.

E. N. PENNEBAKER, '24, lives in Scottsdale, Ariz. He is a self-employed mining geologist consultant.

KENNETH L. GOW, '26, is a self-employed consultant and resides in Houston, Tex.

WILBUR E. BAKKE, '27, lives in San Antonio, Tex.

RALPH A. MCGOEY, '27, is a consulting petroleum engineer and lives in Bakersfield, Calif.

PHILIP ANDREWS, '34, lives in Boulder, Colo.

JOHN DOMERCQ, JR., '34, is an executive with Schlumberger, Limited, Houston, Texas.

DAVID R. NELSON, '35, is retired and lives in La Jolla, Calif.

JOHN F. LORD, '36, lives in Toms River, N.J.

ROSS M. PHILLIPS, '36, resides in San Diego, Calif. He is a self-employed consulting geologist.

HENRY J. CAVIGLI, '37, is with Standard Oil of Calif. and lives in Fullerton, Calif.

E. B. BUSTER, '40, is an executive vice president of Townsend Co.—A Div. of Textron, Inc., Santa Ana, Calif.

EDWARD M. BENSON, JR., '42, is executive vice president and director of Atlantic Richfield Co., Los Angeles, Calif.

THE GEAR OF THETA TAU

MYRON R. ELLIOTT, '50, is regional manager for Sun Oil Co. He lives in Sugar Land, Tex.

LYNNE F. THOMPSON, '50, resides in Midland, Tex. He is a district manager of operations for Union Oil Co. of Calif.

HENRY W. COIL, JR., '54, is president of Tilden Constructors, Inc., Riverside, Calif.

HAROLD V. HOFFMAN, '57, is a math and physics teacher. He lives in Spring Valley, Calif.

REX E. OLSEN, '57, is with Exxon Co., Denver, Colo.

LYNNE E. MULLER, '29, has retired from Buick Motor Div., General Motors. He is living in Flint, Mich.

CHARLES W. CLUTZ, '33, has completed restoration of a 110 year old house in Rochester, N.Y. He has recently moved to his new residence.

GLENN E. HANDS, '34, is living in Mission, Kan. He is an associate with Larkin & Assoc.

RILEY D. WOODSON, '35, is a partner with Black & Veatch. He lives in Shawnee Mission, Kan.

LEWIS W. BENZ, '37, is an engineering supervisor with Phillips Petroleum Co., Borger, Tex.

DONALD L. FLANDERS, '39, lives in Mission, Kan. He is a district manager with Spanall Co.

CARL R. ROLLERT, '41, has retired from Collins Radio. He has built his own retirement home in Carbondale, Colo.

COL. G. D. DEAN, '43, is with the Lummus Co., Bloomfield, N.J. He lives in Shrewsbury, N.J.

L. FRANK LIGHTY, '43, is in sales with the Tubular Div., Proler International Corp., Houston, Tex.

RALPH W. MAY, JR., '44, is chief, low-speed aircraft, NASA, Washington, D.C. He lives in Fairfax, Va.

J. B. LADD, '49, is president of Ladd Petroleum Corp., Denver, Colo.

ROBERT W. ELLIOT, '50, is president of Elliott Construction Co., Kansas City, Mo. He resides in Prairie Village, Kan.

CHARLES H. WALKER, '50, is with General Dynamics Corp., Ft. Worth, Tex.

GEORGE R. MCNEISH, '51, is a self employed consulting geological engineer living in Winfield, Kan. His son, Greg, is a recent initiate of Zeta Chapter.

LT. COL. GLEN T. BEAUCHAMP, '53, is in the Marine Corps stationed at Norfolk, Va. He lives in Virginia Beach, Va.

VERNON K. JOHNSON, '55, is the owner of Midwest Heat Transfer Co., Prairie Village, Kan. He resides in Leawood, Kan.

LAWRENCE W. TAYLOR, JR., '55, lives in Hampton, Va. He is with NASA-Langley Research Center.

BENNY A. ANDERSON, '57, has been promoted to project engineer in charge of computer simulations of engines with Pratt & Whitney Aircraft, East Hartford, Conn. He is a commander in the Navy

KANSAS

Zeta

CHARLES M. COATS, '13, is retired and living in Wichita, Kan.

HOBART C. HOLT, '18, is retired and living in Marshall, Tex.

LEON E. EDWARDS, '22, resides in retirement in Sun City Center, Fla.

J. LLOYD BARRON, '23, lives in Southbury, Conn.

PAUL ENDACOTT, '23, is retired and lives in Bartlesville, Okla.

GEORGE L. HAWLEY, '23, lives in Topeka, Kan. in his retirement.

STANLEY LEARNED, '24, resides in retirement in Bartlesville, Okla.

G. E. ROSE, '24, is retired from S.W. Bell Telephone Co. and lives in Topeka, Kan.

LYNN A. HIBBS, '25, has retired from consulting and is living in Meredith, Colo.

RALPH M. KING, '25, enjoys traveling in his retirement. Home base in Stuttgart, Ark.

W. L. PATTERSON, '25, is a partner in Black & Veatch. He lives in Prairie Village, Kan.

CHARLES W. HUBBELL, '26, lives in Bartlesville, Okla.

GEORGE H. CASH, '28, is retired and living in Reedy, W.Va.

WILLIAM C. CAMPBELL, '29, is a self employed consulting engineer. He resides in Chatham, N.J.

FALL 1974

reserve and commanding officer of a Navy research reserve company.

WILLIAM E. FRANKLIN, '57, is the manager of environment and resource economics programs, Midwest Research Institute, Kansas City, Mo. He lives in Prairie Village, Kan.

DOUGLASS S. WALLACE, '57, is a design engineer with Burgess, Latimer, & Miller, P.C., Topeka, Kan.

ROBERT H. MCCAMISH, '58, has returned from Germany and is now with the National Security Agency, Ft. Meade, Md. He resides in Bowie, Md.

JON M. EDMONDS, '62, lives in York, Pa. He is a product manager with York Div.—Borg Warner Refrigeration.

HAROLD L. MASSIE, '64, is a clinical research bio-engineer with Hoffmann-LaRoche, Inc., Cranbury, N.J. He lives in Robbinsville, N.J.

WAYNE L. PRATT, '64, is with Collins Radio. He resides in Richardson, Tex.

RONALD D. MILLER, '68, lives in Wichita, Kan. and is a project engineer with Poe & Assoc.

CURT SLAGELL, '69, is in bridge design with the Kansas Highway Commission, Topeka.

A. F. BURKLE, '70, is an electrical design engineer with Black & Veatch. He resides in Fairway, Kan.

DAVID C. DWYER, '70, lives in Lawrence, Kan. He is a civil engineer with the Kansas Highway Commission and is an advisor to Zeta Chapter.

ENS. ANDREW D. RUSSELL, '70, is a material control officer, Aircraft Maint. Dept., U.S. Naval Station, Rota, Spain. One of his roommates is John Stokes of Upsilon Chapter.

LESLIE D. McCULLEY, '71, lives in Baton Rouge, La.

SAMUEL G. HALDIMAN, '72, is with Taliaferro & Brown Consulting Engineers, Kansas City, Kan.

TIMOTHY C. LIEBERT, '72, received his masters degree from the University of Cincinnati recently and is with Phillips Petroleum, Bartlesville, Okla.

MIT

Eta

ARTON P. CAMP, '15, is retired and living in Middlebury, Conn.

DR. VERTREES YOUNG, '16, is retired and living in Bogalusa, La.

WINTHROP C. SWAIN, '17, is a self-employed economic consultant. He resides in Hingham, Mass.

WILFRED M. THOMSON, '22, is retired from Nash Engineering Co. He lives in Corona del Mar, Calif.

KENNETH B. WALTON, '24, lives in Brigantine, N.J.

ROBERT W. ROGERS, '26, is retired and living in Baitington, R.I.

JAMES D. FLAGG, '27, is retired from the TVA and residing in Knoxville, Tenn.

E. NEAL WELLS, '29, is retired and lives in Pinellas Park, Fla.

COLUMBIA

Theta

DR. FELIX E. WORMSER, '16, lives in Greenwich, Conn. He is a self-employed mining engineer.

G. LESTER JONES is semi-retired and living in Marne, Mich.

WILLIAM C. GAHAGAN, '24, lives in Summerville, S.C.

LIONEL S. BALDWIN, '28, resides in Norwalk, Conn. He is president of Norwick and Worcester R. R. Co.

JAMES A. KEARNEY, '30, is an instructor in metallurgy at Dean Institute of Technology, Pittsburgh, Penns.

DROUGHT D. DAVIS, '36, now lives in Den Haag, Nederland.

ARTHUR F. GERVENKA, '41, is a member of the executive staff of Grumman Aerospace Corp., Bethpage, N.Y. He resides in Oakdale, N.Y.

JOHN F. McDERMOTT, '41, resides in North Palm Beach, Fla. He is a division program manager with Pratt & Whitney.

GEORGE W. PLOSSL, '41, lives in Decatur, Ga.

WILLIAM VERMEULEN, '41, lives in Morrison, Ill. He is an engineering manager with General Electric Co.

JOSEPH H. LEUNER, '42, is president of Leuner Transportation Co., North Tarrytown, N.Y.

THE GEAR OF THETA TAU

DONALD D. SNAVELY, '43, is self-employed and living in Mottow, Ga.

WILLIAM H. GLICK, '48, resides in Mendham, N.J. He is director and group vice president of BASF Wyandotte Corp., Parsippany, N.J.

GEORGE A. READ, '50, is with E. I. Dupont and lives in Martinsville, Va.

GUSTAVE GUSTAFSON, '51, is with the Port Authority of N.Y. & N.J. He lives in Bronx, N.Y.

WILLIAM S. EVERTS, '57, lives in Morristown, N.J.

ARTHUR W. EPLEY III, '64, is president of Datatex Corp., Houston, Tex.

ROBERT A. BORNFRIEND, '66, now lives in Ridgefield, Conn. He is with American Cyanamid, Stamford, Conn.

DR. ROBERT GLASER, '67, is a resident M.D. at Mt. Sinai Hospital, New York City.

ANDREW GASPARD, '69, resides in New York City. He is a senior financial analyst for RCA.

TA M. LI, '69, has been promoted to associate editor of the Engineering and Mining Journal. He lives in Flushing, N.Y.

MICHAEL D. WORTHAM, '74, is with Esso Chemical Supply Co. He lives in Florham Park, N.J.

MISSOURI AT ROLLA

Iota

GUNNARD E. JOHNSON, '16, lives in Worcester, N.Y.

MARK L. TERRY, '20, has moved to Longview, Tex.

BERT HOOVER, '23, is retired and living in Trenton, Mo.

W. IRWIN SHORT, '26, lives in Boca Raton, Fla. He is a professor emeritus, Univ. of Pittsburgh.

MARK B. LAYNE, '28, is an engineering consultant with Layne-Riddle Engineers, Inc. He lives in Higginsville, Mo.

KENNETH R. NEAL, '30, is retired and living in Sarasota, Fla.

W. H. SCHWALBERT, '36, lives in Toledo, Ohio. He is a vice president of Toledo Edison.

DONNELL W. DUTTON, '37, lives in Atlanta, Ga.

W. L. HOLZ, '37, is president of Terlex Co., Carmi, Ill.

EDWIN W. LOGAN, '37, resides in Marine, Ill. He is chief engineer, Hunter Engineering, Bridgeton, Mo.

CHAS L. CLAYTON, '38, lives in Hannibal, Mo.

JESSE S. LEGRAND, '38, is with ITT Avionics, Nutley, N.J. He lives in Clifton, N.J.

ALBERT A. PHILLIPS, '38, lives in Tulsa, Okla.

A. E. RHODES, '39, is vice president of the Public Service Co. of N.M. He resides in Albuquerque.

WILLIAM W. COLLINS, '50, is vice president of the First National City Bank, New York. He lives in Metuchen, N.J.

JOHN F. WINTERS, '51, is with St. Joe Minerals Corp., Monaca, Penns. He lives in Aliquippa, Penns.

ROBERT I. ZANE, '51, lives in Overland Park, Kan. He is vice president for sales, Dean Machinery Co., Kansas City, Mo.

DAN W. MARTIN, '52, lives in Tehran, Iran.

LELAND D. BEVERAGE, '53, is a supervising engineer with R. W. Beck & Assoc., Wellesley, Mass. He lives in Needham, Mass.

BOBBY HARRIS, '58, is living in St. Louis, Mo. He is a project manager with Nooter Corp., St. Louis.

WILLIAM A. KRUGER, '59, is director, transportation div., Clark, Dietz & Assoc., Urbana, Ill. He lives in Champaign, Ill.

W. E. BURCHILL, '62, now lives in Bloomfield, Conn.

DR. WM. L. HALLERBERG, '62, is an engineering manager with the Stellite Div., Cabot Corp., Kokomo, Ind.

R. S. ROBERTSON, '63, resides in Rolla, Mo. He is with Hamilton & Son, Inc.

JAMES A. CLIPPARD, '65, is a district supervisor in the industrial chemical div. of Cities Service Co., Atlanta, Ga. He lives in Raleigh, N.C.

DR. THOMAS K. GAYLORD, '65, is an assistant professor of electrical engineering at Georgia Tech.

DANIEL K. GOODMAN, '65, is in the dept. of electrical engineering at the University of Missouri-Rolla.

W. R. HAGEN, '65, lives in Columbus, Ohio.

M. OWEN LASKER, '65, resides in Houston, Tex.

FALL 1974

R. D. SKINNER, '65, has moved to Phoenix, Ariz.

RICHARD C. VEDDER, '67, lives in St. Louis, Mo. He is a project engineer with Sverdrup Parcel.

DAVID W. WEINRICH, '67, lives in Escondido, Calif.

CLEMENS P. DRAG, '68, has moved to Florissant, Mo.

JOHN A. MUNNS, '68, is a MBA candidate at Harvard Business School.

CLIFFORD A. CORNEAU, '41, lives in Renton, Wash. He is the vice president, N.W. region, Ringsby United Truck Line.

WILLIAM E. CROCKETT, '41, is a self-employed sales representative. He resides in Findlay, Ohio.

ARMIN F. FICK, '41, lives in Summit, N.J.

LEONARD C. WALFF, '42, is with the Moberly, Mo. Area J.C.'s. He lives in Columbia, Mo.

E. S. FRIS, '43, is a major general in the U.S. Marine Corp., Washington, D.C. He lives in Vienna, Va.

LT. COL. WILLIS H. CLARK, '43, lives in Bryan, Tex.

ALLAN W. LINDBERG, '45, is a self-employed electronics consultant. He resides in Kirkwood, Mo.

HAROLD G. BUTZER, '47, resides in Jefferson City, Mo.

JAMES B. CHANEY, '48, has moved to Scotch Plains, N.J.

ROBERT M. ROCK, '48, lives in Walnut Creek, Calif. He is the chief of technical services with the Environmental Protection Agency, San Francisco.

DON SCHMIDT, '48, is with R. Lavin & Sons, Inc., Chicago, Ill. He lives in Hinsdale, Ill.

HAROLD M. TELTHORST, '48, is vice president of Victory Sand & Concrete, Inc., Topeka, Kan.

JACK D. FOSTER, '49, is with Atlantic Richfield Co., Midland, Tex.

LELAND K. FITZGERALD, '69, now lives in San Jose, Calif.

ILLINOIS

Kappa

J. C. HAPPENNY, '24, lives in Fort Lauderdale, Fla.

CLARENCE H. ELDER, '25, resides in Chesterton, Ind.

RICHARD J. STOCKHAM, '26, is president of Stockham Valves, Birmingham, Ala.

GERALD F. PAULEY, '27, lives in Chesterfield, Mo.

GRAEME B. SUPPLE, '27, is a consulting engineer with Walter Scholer & Assoc., Lafayette, Ind. He lives in Indianapolis, Ind.

GEORGE D. GREENE, '28, lives in Clayton, Mo.

ROBERT C. HADLEY, '28, is retired and living in Denver, Colo.

W. L. LINSAY, '28, lives in Springfield, Ill.

GORDON S. HEYLIN, '28, is retired and living in Rydall, Penns.

L. G. LEUTWILER, '29, lives in St. Louis, Mo.

LEWIS F. CONCKLIN, '31, lives in Riverdale, Ill.

FREDERICK W. MAST, '33, resides in Waterloo, Iowa. He is president of Jens Olesen & Sons Construction Co.

CHARLES S. MONNIER, '38, now lives in Rogers, Ark.

HARLOW R. WHILDIN, '38, lives in Joliet, Ill.

UTAH

Lambda

C. MILTON ANDERSON, '20, is retired and living in Salt Lake City, Utah.

WILLIAM J. WALKER, '21, lives in Ely, Nev.

F. CYRUS BATES, '26, resides in Salt Lake City. He is an electrical consulting engineer with Bates Engineering Co.

MELVIN E. LUNDBERG, '30, is retired and living in Elko, Nev.

ELTON W. PACE, '30, resides in Salt Lake City. He is chairman of the board of Pace Industries, Salt Lake City.

DR. SIMON RAMO, '33, lives in Redonda Beach, Calif.

HUGH M. THOMSON, '33, is retired and living in Salt Lake City.

ELDON R. MORGAN, '34, lives in New York City.

THE GEAR OF THETA TAU

RICHARD M. NELSON, '34, resides in Southfield, Mich. He is manager of engineering services with American Standard Industrial Div., Detroit.

DR. FREDERICK D. CORTNER, '41, is an educational advisor with the U.S. Army, Ft. Bragg, N.C.

RAOUL C. EVANS, '41, is a partner in Cowley & Evans, Salt Lake City.

BOYD H. FARR, '44, is a field service engineer with REA. He lives in Lafayette, Calif.

KING HINCKLEY, '47, lives in Bellevue, Wash.

ROBERT F. WEYHER, '48, is president of Weyher Construction Co., Salt Lake City.

ROY W. MCLEESE, JR., '57, is western regional manager with E. I. duPont de Nemours, Chicago. He resides in Wilmette, Ill.

ALAN D. BARBER, '58, is with ALCOA, Pittsburgh, Penns.

JAMES E. JACKSON, '65, lives in Salt Lake City.

RICHARD N. OISHI, '66, is with A. T. Kearney, Inc. He lives in Salt Lake City.

RICHARD T. BROWN, '67, lives in Brigham City, Utah.

CAPT. ROBERT R. CLEMONS, '67, is stationed at Clark AFB, Philippine Islands.

He is engineering manager with Chicago Bridge & Iron Co., Oakbrook, Ill.

JOHN C. HAMIL, '42, lives in Greensboro, N.C.

WILLIAM M. MURPHY, JR., '47, is a consulting scientist with Raytheon Co., Bedford, Mass. He resides in Wellesley, Mass.

STEVE L. PAPPAS, '47, is president of his own firm. He lives in Birmingham, Ala.

ROBERT L. JONES, JR., '48, lives in Augusta, Ga.

VINCENT D. LAURIA, '48, is director of manufacturing, AIL Div., Cutler-Hammer, Deer Park, N.Y. He lives in Jericho, N.Y.

RICHARD E. ELY, '49, resides in Huntsville, Ala. He is with the U.S. Army Missile Command.

ROBERT H. POGUE, JR., '49, is president of General Steel Tank Co., Birmingham, Ala.

WILLIAM B. SPEIR, '49, is executive vice president of the Speir Div. of J. H. Friend, Inc., Birmingham, Ala.

CHARLIE F. WEED, '49, resides in Tusculumbia, Ala. He is a senior project engineer with Reynolds Metals Co., Sheffield, Ala.

REMO JOHN CARBONI, '50, lives in Avalon, N.J.

PHILIP R. ENOCHS, '53, is a plant engineer with Fernwood Industries, Fernwood, Miss.

JAMES H. RIVES, JR., '53, is with Gibbs & Hill, Inc., Omaha, Nebr.

JAMES O. BIDDLE, '57, is assistant vice president of Ledbetter Bros., Inc., Rome, Ga.

JAMES O. HORSLEY, '58, lives in Moorestown, N.J. He is a senior engineer with RCA Corp.

DR. JOHN B. KARRH, '58, is associate professor of civil engineering at the University of South Alabama, Mobile, Ala.

JOSEPH L. MASSETT, '58, is a senior staff engineer with Martin Marietta Corp., Orlando, Fla.

CHARLES D. SMITH, JR., '58, is a general engineer supervisor with the SAFEGUARD System Command, Huntsville, Ala.

BOB O. WILSON, '58, is a program manager with Teledyne Brown Engineering Co., Huntsville, Ala.

DON L. GRIFFIN, '59, has moved to Severna Park, Md. He is with CADCOM, Inc., Annapolis, Md.

ALABAMA

Mu

CHARLES F. BOOTH, '21, lives in Elmore, Ala.

ERNEST C. GAITON, '23, is retired and living in Birmingham, Ala.

PAUL M. SPEAKES is vice president of Davis, Speake & Assoc., Birmingham, Ala.

WILLIAM B. TANNER, '33, is retired and living in Vicksburg, Miss.

CLAUDE S. LINEBERRY, '35, lives in Rome, Ga.

WILLIAM J. LUCAS, '39, is with Wigton Abbott, Plainfield, N.J. He resides in Holmdel, N.J.

EARL D. MAURER, '40, is an erection superintendent with Ernst Steel Corp., Buffalo, N.Y. He lives in Clarence, N.Y.

WILLIAM SUTE, '40, lives in Western Springs, Ill.

FALL 1974

JOSEPH G. DOBBS, '60, lives in Birmingham, Ala.

THOMAS H. GACHET, '60, is president of Patagon Engineering, Inc., Leeds, Ala. He lives in Birmingham, Ala.

ROBERT K. HELMS, '61, lives in Darien, Conn. He is a production consultant with American Overseas Petroleum, N.Y., N.Y.

WILLIAM E. ROBERTS, '63, is with Sperry Rand Corp., Huntsville, Ala.

DAVID SHOW, '63, is the director of the systems dept., University of Alabama Hospital. He lives in Birmingham, Ala.

S. PATRICK BALLARD, '65, is a graduate student at the University of Alabama.

JOHN E. DANIEL, '65, resides in Columbus, Ohio. He is chief, environmental law section, Ohio Attorney General Office, Columbus.

WILLIAM L. MARSHALL, JR., '65, lives in Birmingham, Ala.

W. H. MIXON, '65, is assistant manager, Marlwood Corp., Winfield, Ala. He lives in Hamilton, Ala.

R. R. YATES, '65, lives in Fayette, Ala.

RICHARD A. JACOBS, '67, lives in Birmingham, Ala. He is vice president of Thoman Engineers, Inc.

JAMES P. HAYES, JR., '67, is a systems analyst with The Louisiana Land & Exploration Co., New Orleans, La.

EDWARD B. DOCKERY, JR., '68, lives in Tuscaloosa.

PIERCE BOYD, '69, is plant manager for the West Alabama Supply Co., Livingston, Ala.

LARRY L. HUDSON, '69, is a design engineer with Chicago Bridge & Iron Co., Birmingham, Ala.

LOUIS B. STEPHENS, JR., '69, lives in Sacramento, Calif. He is a highway engineer with the U.S. Federal Highway Administration.

ROBERT B. THOMPSON, '69, is with E. I. DuPont, Wilmington, Del. He lives in New Haven, Conn.

JAMES W. KEITH, '70, lives in Hope Hull, Ala.

DR. HARRY WEAVER, '70, is a resident in psychiatry at the Bowman Gray Medical Center, Winston-Salem, N.C.

BRUCE ANDERSON, '71, is enrolled in the University of Alabama Law School, Tuscaloosa.

PHILLIP G. REEVES, '71 is a division engineer with Am. Mtl. Climax, Indianapolis, Ind. He lives in Keensburg, Ill.

ROY R. BROWDER, JR., '72, lives in Birmingham, Ala.

ERIC M. COSPER, '72, is a junior engineer with the Alabama Power Co., Birmingham. He lives in Homewood, Ala.

CHARLES W. CULBERSON, '72, is with Hunt & Wesson Foods, Inc., Savannah, Ga.

CARL R. CANADA, '73, is a graduate student at the University of Alabama.

RODNEY H. KAY, '74, lives in Tuscaloosa, Ala.

CARNEGIE TECH

Nu

H. HAMLIN BURDICK, '22, is retired and living in Detroit, Mich.

JOHN D. JAREMA, '25, is retired and living in Akron, Ohio.

THOMAS F. BRASTOW, '27, lives in Villanova, Penns.

JOHN W. LUOMA, '29, is retired and living in East Chicago, Ind.

HENRY P. EVANS, '32, is manager of publicity for C. F. Braun & Co., Alhambra, Calif. He lives in Altadena, Calif.

ROBERT B. ROBERTS, '35, recently retired from Westinghouse Electric. He now lives in Longport, N.J.

DR. MAX L. WILLIAMS, JR., '42, is dean of the school of engineering, University of Pittsburgh.

JOHN A. GLASS, '45, is with B. F. Goodrich, Brecksville, Ohio. He lives in Akron, Ohio.

ANDREW J. PEPPER, '46, is director of systems, methods, and data processing for Koppers Co., Inc., Pittsburgh, Penns.

IRWIN M. AISENBERG, '47, is in private practice in patent law. He resides in Washington, D.C.

THOMAS E. BRUNS, '48, lives in Danville, Calif.

THOMAS G. FERGUSON, JR., '50, is now manager of international operations for Grove Valve and Regulator Co., Oakland, Calif. He lives in Orinda, Calif.

THE GEAR OF THETA TAU

WILLIAM G. DALY, '51, is vice president of operations, Riviana Foods, Inc., Houston, Tex.

WISCONSIN

Xi

BOWMAN K. BREED, '24, lives in Northbrook, Ill. He is with Underwriters Laboratories.

ROBERT O. SCHINDELHOLZ, '49, is a district engineer with the Wisconsin Div. of Highways, Rhinelander, Wis.

GEORGE P. ZIMMERMAN, '50, is the public service director for the city of West Corina, Calif.

MARK A. WALLACE, '51, lives in Houston, Tex.

THEODORE H. WITZEL, '57, lives in Gaithersburg, Mo.

DAVID J. RICHTER, '62, lives in Cincinnati, Ohio.

ROBERT G. LUKSZYS, '65, is a civil engineer with the Wisconsin Dept. of Transportation, Madison. He lives in Monona, Wis.

RICHARD A. PETERSON, '65, lives in Chicago, Ill. He is with Skidmore, Owings & Merrill.

JOHN J. SAUER, '65, is plant manager of the Celotex Corp.—Div. of Jim Walter Corp. He resides in Deposit, N.Y.

TERRY E. KLITZKIE, '66, lives in New York City.

EARL A. ROTHWEILER, '66, is with IBM and lives in Franklin, Wis.

WILLIAM L. GERARD, '67, is a premed student at Dominican College, Racine, Wis.

DR. MARK R. GOLDEN, '67, is doing a pulmonary fellowship at Harbor General Hospital, Torrence, Calif.

THOMAS F. SCHUPPE, '67, is stationed at Minot AFB.

PETER STEITZ, '67, is with Burns & McDonnell, Kansas City, Mo. He lives in Carbondale, Kan.

EDWARD F. ELLINGSON, '68, lives in Milwaukee, Wis.

ALLEN L. PERKINS II, '68, is a project engineer with Perkins Engineering Co., Brookfield, Wis. He resides in Colgate, Wis.

RAYMOND H. EISEMANN, '69, lives in Milwaukee, Wis. He is an engineer with the Wisconsin Telephone Co.

DENNIS M. MITCHELL, '69, lives in Rochester, Minn.

ROBERT L. SCHOEN, '69, lives in Rochester, Minn.

RICHARD L. JENKS, '71, lives in Madison, Wis.

EUGENE McNURLEN, '71, is a development engineer with The Trane Co., LaCrosse, Wis. He reports the birth of his second child, a daughter.

JOHN W. WITT, '71, lives in West Allis, Wis.

RALPH BAILEY, '72, is with Babcock & Wilcox, Alliance, Ohio.

KENNETH LIESENER, '72, is a project engineer with Kohler, Wis. He lives in Sheboygan.

ALAN C. MUSSER, '72, is a maintenance supervisor with Union Oil Co. of Calif. He lives in Savannah, Ga.

JOHN P. PEDERSON, '73, is a graduate student at the University of Wisconsin, Madison.

STEPHEN NAPP, '73, lives in South Pasadena, Calif.

JERRY A. ROOD, '73, is a manufacturing engineer with The Trane Co., LaCrosse, Wis.

PAUL A. VANDERMUS, '73, is with Bechtel Corp. He lives in Herculaneum, Mo.

IOWA

Omicron

CHARLES E. STICKNEY, '21, is a consultant in structural engineering. He resides in North Hollywood, Calif.

JOHN S. HOLBROOK, '24, is retired and living in Carmel, Calif.

LAURENCE L. FRY, '25, is retired. He lives in Corydon, Iowa.

DICK VAN GORP, '26, lives in Chicago, Ill.

KENNETH C. DeWALT, '27, lives in Ormond Beach, Fla.

FRANK W. EDWARDS, '28, lives in Albuquerque, N.M.

DR. RALPH I. CLAASSEN, '31, resides in Peoria, Ill.

HOWARD NOBLE, '34, is retired and living in Idaho Falls, Idaho.

JAMES W. BOWMAN, '40, lives in Denver, Colo.

FALL 1974

ROMAN T. POTTHOFF, '42, is a principal with Stanley Consultants, Muscatine, Iowa.

LELAND M. HAUSLER, '47, is a generating plant superintendent with Consumers Power Co., Jackson, Mich. He lives in Benton Harbor, Mich.

HAROLD A. HUDACHEK, '48, resides in Stillwater, Minn. He is vice president and a director of Somerset Systems, Inc., Somerset, Wis.

PHILIP A. TEMPLE, '50, now lives in Corry, Penns. He is vice president of product engineering with Corry Jamestown Corp.

ROBERT C. HOLLE, '51, lives in Middletown, Conn.

VERN E. HALVERSON, '52, is project manager with S. J. Groves & Sons Co., Springfield, Ill.

MURRAY ROST, '52, is a group leader, rotating machinery with Mobil Research and Development, Princeton, N.J. He lives in Livingston, N.J.

LINDSAY L. LENHART, '53, is living in Northfield, Ill. He is a manufacturers representative with Halliday-Lenhart Assoc., Inc.

HAROLD R. MILLER, '54, lives in Saratoga, Calif. He is a project engineer with Lockheed Missiles & Space Co., Inc., Sunnyvale, Calif.

GEORGE W. HEASLEY, '60, is an industrial engineering manager with United Parcel Service, Los Angeles, Calif. He lives in Westminster, Calif.

LES DIGMAN, '61, is with the U.S. Army Management Engineering Training Agency, Rock Island, Ill. He lives in Davenport, Iowa.

BURTON C. GEARHART, '63, resides in Garland, Tex. He is a section head—systems programming with Harris Communications Systems, Dallas, Tex.

JOHN W. PULVER, '63, is a senior associate with Development and Resources Corp., Sacramento, Calif.

JOSEPH R. MCSWIGGIN, '66, is a plant engineer with Pilot Chemical Co., Cincinnati, Ohio.

BEN SMITH III, '67, is a general foreman with P.P.G. Industries, Chemical Div., New Martinsville, W.Va.

GEORGE J. CROSHECK, '68, lives in Solon, Iowa.

FRED EGGERS, '69, now lives in Huntsville, Ala.

GEORGE E. ENTWHISTLE, '69, lives in Northlake, Ill. He is a staff engineer with GTE Automatic Electric Labs.

GAYLEN H. ENOCHSON, '70, is a systems development engineer with Eastman Kodak Co., Rochester, N.Y. He lives in Webster, N.Y.

VERNON L. McALLISTER, '70, lives in Austin, Tex. He is with the U.S. Air Force, Bergstrom AFB, Tex.

JOHN A. CURTIS, '71, is a design engineer with Black & Veatch, Kansas City, Mo. He resides in Overland Park, Kan.

DEAN BARBER, '71, lives in Dewitt, Iowa.

DONALD G. JOHNSON, JR., '72, is enrolled in Harvard Law School.

STEVEN F. LAUGHLIN, '72, is a project director with Rathbun Regional Planning Commission, Centerville, Iowa.

VIRGINIA

Pi

ROBERT G. FITZ, '25, is retired and living in Holmes Beach, Fla.

THOMAS M. LINVILLE, '26, lives in Schenectady, N.Y. He is president of Tau Beta Pi.

OLIVER G. FLIPPEN, JR., '29, is retired from Humble Oil and living in Richmond, Va.

JAMES S. CARSON, '34, retired in June, 1973 and is living in Havre de Grace, Md.

H. M. HAMMOND, '34, lives in Greensburg, Penns.

HOLMES D. HARPER, '34, is a transmission supervisor with The Potomac Edison Co. He resides in Williamsport, Md.

EDWIN B. DUNN, '30, lives in Wayne, Pa. He is the manager, Telecomm East, Atlantic Richfield.

V. A. SHRINER, JR., '48, is a division engineer with Virginia Electric & Power Co., Charlottesville.

FERMAN W. PERRY, '50, resides in Winchester, Va. He is president of Perry Engineering Co., Inc.

JERROLD T. GREENE, '59, lives in Roanoke, Va.

MAJ. JAMES P. MCHENRY, '59, is presently a full time student at the University of San Diego School of Law.

GARTH F. FORT, '64, is supervisor of manufacturing with Monsanto, Columbia, Tenn.

THE GEAR OF THETA TAU

NORMAN L. BROWN, JR., '65, now lives in Vienna, W.Va.

DR. ROBERT C. SUMNER, '66, lives in Marlboro, Mass.

W. M. ROSS, JR., '69, is a student at the University of Tennessee, Knoxville.

MICHAEL G. OTTEN, '72, lives in Ellicott City, Md.

ROBERT A. ELLIS, '73, lives in Richmond, Va.

RANDOLPH R. HORTON, '73, lives in Manchester, Conn.

KENNETH R. ROBERTS, '73, lives in Chatham, N.J.

WALTER C. THOMAS, JR., '57, lives in Jamestown, N.C.

HAROLD R. DENTON, '58, lives in Washington, D.C. He is a director of site safety for the U.S. Atomic Energy Commission.

E. W. NUCKOLLS, '58, is plant manager for Union Carbide Mexicana, Tecamac, Mexico.

VERNON D. NIVEN, '59, is assistant plant manager of the Chase & Sanborn Coffee Plant, New Orleans, La. He lives in St. Louis, Miss.

ROBERT W. WATERS, '60, lives in Baltimore, Md. He is a manager with Ernst & Ernst.

JOSEPH R. WHITE, JR., '61, now lives in Greensboro, N.C. He is with Alexander & Alexander.

MICHAEL E. ADAMS, '65, lives in Spartanburg, S.C.

ARTHUR L. KENNEDY, '65, is a design engineer with L. E. Wooten & Co., Raleigh, N.C. He lives in Garner, N.C.

ROBERT L. ANDERSON, '66, lives in Charlotte, N.C.

J. W. BOWLING, '67, is a staff assistant with GM Corp. He lives in Pontiac, Mich.

STEVE FOX, '67, lives in Hickory, N.C. He is a technical manager with Comm/Scope Corp.

C. E. FULTON, '68, is a department chief with Western Electric, Naperville, Ill. He lives in St. Charles, Ill.

J. PRESTON JONES, JR., '69, resides in Lake Jackson, Tex. He is a project engineer with Dow Chemical, Freeport, Tex.

L. D. DISHER, '71, is a dial service administrator with Southern Bell, Raleigh, N.C.

NORTH CAROLINA STATE

Rho

WARREN S. MANN, '21, resides in Middletown, Ohio.

JOHN T. MASON, '29, is a division operating manager with Virginia Electric & Power Co., Norfolk, Va.

L. G. ATKINSON, JR., '33, is a plant engineer with Westinghouse Electric Corp., Beaver, Penns.

DANIEL M. HOUSE, '33, is president of the Louisville Executive Club. He lives in Jeffersonville, Ind.

KENNETH V. CHACE, '39, resides in Marion, Mass. He is president of Berkshire Hathaway Inc., New Bedford, Mass.

WILLIAM S. JOHNSON, '42, lives in New Orleans, La.

DOUGLAS A. CRAVEN, '43, is with Grumman Aerospace Corp., Bethpage, N.Y. He lives in Massapequa Park, N.Y.

WILLIAM J. GOODRUM, '43, is a production staff engineer with Spencer Kellogg Div., Textron, Inc. He lives in Buffalo, N.Y.

G. PERRY GREENE, '44, owns Greene Construction Co. and Watanga Ready Mix, Inc., Boone, N.C.

LT. COL. PAUL E. SMATHERS, '52, is stationed at Holloman AFB, N.M. He is chief, Mission Control Division—White Sands Missile Range.

DR. JOSEPH T. PEARSON, '56, is a Fulbright Professor on sabbatical in Germany.

DR. JOE W. REECE, '57, is an associate professor at Auburn University, Auburn, Ala.

IS YOUR NAME OR CHAPTER MISSING?

Due to the response from alumni in this the 70th anniversary of Theta Tau, all alumni notes could not be published in this issue. The list will be continued in the Spring, 1975 issue. If you have not responded to the request for news and anniversary year contributions, use the forms provided in the back of this issue.



In Memoriam

John W. Adams, Jr., *Minnesota* '11-11/23/73
Robert P. Aldridge, *Virginia* '31-9/5/56
Gabriel R. Amoroso, *Columbia* '41-12/29/73
Lawrence A. Anderson, *Utah* '18-2/2/74
Lawrence L. Anderson, *Mich. Tech* '49-5/15/73
Past Grand Inner Guard Dr. Robert J. Anderson,
Case Western '14-5/16/74
Joseph L. Armstrong, *Minnesota* '28
Clarence M. Ayres, Jr., *Alabama* '27
Frank E. Bailey, *George Washington* '35-7/73
Rudolph J. Barnes, *Virginia* '31-5/25/70
Ralph R. Basler, *S.D. Mines* '33-6/23/73
Albert J. Bendler, *Columbia* '38
George F. Booss, Jr., *Columbia* '26
Ivan L. Bounds, *Missouri at Rolla* '50
William M. Boyd, *N.C. State* '34-10/9/71
Louis J. Brewer, *Colorado Mines* '39-6/7/71
Maxwell V. Brown, *Case Western* '29-9/11/73
Nathan W. Brown, *Kansas* '15
Frederick C. Bryant, *MIT* '16
Louis J. Burg, *Missouri at Rolla* '28-4/18/72
George G. Bywater, *Utah* '09-1/29/69
William E. Caldwell, Jr., *Virginia* '37-5/1/73
Robert A. Calhoun, *Minnesota* '23
Martin E. Callahan, Jr., *Utah* '22-9/18/59
Fulton H. Campbell, *Missouri at Rolla* '31
George D. Campbell, *Carnegie Tech* '29-9/23/72
Charles K. Carter, *Carnegie Tech* '30-6/19/71
Omar A. Cavins, *Berkeley* '15-10/11/71
James F. Chandler, *Illinois* '31-1/27/73
Ralph W. Chaney, *Hon. Berkeley* '3/3/71
Ivan A. Chesbro, *Mich. Tech* '15-10/11/73
Martin L. Clark, *Missouri at Rolla* '29
Eugene R. Clearman, *Iowa* '34-9/16/60
William M. Connell, *Ohio State* '58-6/24/74
Richard F. Connelly, *Carnegie Tech* '28-1/73
Wallace R. Cook, *Michigan Tech* '10-4/26/72
Samuel E. Craig, *Missouri at Rolla* '26
LeRoy P. Curtis, *Colorado Mines* '09-71
Thomas H. Curtis, *Minnesota* '12-12/19/73
Earl D. Dake, *Charter S.D. Mines* '24-2/25/74
Lewis E. Davidson, *Missouri at Rolla* '19
Charles F. Davies, *Syracuse* '38
William E. Dean, *Syracuse* '42-2/9/71
James E. Dickinson, Jr., *Virginia* '37
Wilfrid G. Donaldson, *Berkeley* '24-2/26/74
Kenneth J. Duncan, *Minnesota* '10-11/4/72
James Q. duPont, *MIT* '26-2/15/73
Charles E. Dyer, Sr., *Colorado Mines* '10-11/17/73
John A. Erhart, *Minnesota* '40-7/26/72
Benjamin C. Essig, *Colorado Mines* '15
Thomas J. Fitzgerald, *Berkeley* '32
Samuel E. Forsyth, *Kansas* '40-9/28/73
Harold R. Garman, *Charter Purdue* '28-6/16/73

Harold N. Gemmill, *Carnegie Tech* '29-12/15/72
Worthy B. Gemmill, *Case Western* '30-6/25/69
David M. Giltinan, *Minnesota* '15-2/18/70
Albert T. Goodwyn, *Alabama* '33-4/7/73
Horace Grant, *Columbia* '28-9/12/73
Albert L. Grimesey, *Columbia* '25-9/25/73
Leslie L. Halladay, *Minnesota* '21
Clarence W. Harding, *Kansas* '15
Frank V. Hicks, *Mich. Tech* '15-12/8/73
Schuyler W. Jackson, *Syracuse* '43
Robert Jaques, *Minnesota* '09-4/30/70
Donald B. Jenkins, *Virginia* '22
Syrus H. Johnson, *Minnesota* '40-12/18/73
Harold B. Jones, *Virginia* '28-12/20/72
Robert W. Keil, *Colorado Mines* '43-10/30/72
Neil S. Kingsley, *Minnesota* '11-6/7/73
Paul E. Langdon, *Illinois* '20-4/18/73
Charles R. Lindquist, *Columbia* '51-3/2/74
Duncan R. Linsley, *MIT* '22-4/29/72
Reese E. Mallette, *Alabama* '22-9/18/73
John C. Marcroft, *Minnesota* '27
Marvin Marsh, *Mich. Tech* '29-3/5/73
Victor S. Matson, *Utah* '21
Lauren C. McClaran, *Iowa* '31-1/11/71
Donald B. McGilvra, *Minnesota* '18
Thomas M. McKenzie, *Montana Tech* '45
Howard N. McManus, Jr., *Iowa* '51-2/6/74
Arthur E. Meling, *MIT* '22-9/29/73
Adam V. Millar, *Hon. Wisconsin* '9/17/58
Robert I. Miner, *Minnesota* '10-10/17/72
Glenn Mitchell, *Kansas* '32-6/73
James L. Montgomery, *Alabama* '62-2/2/72
Charles F. Moore, *Colorado Mines* '27
Francis E. Murphy, *S.D. Mines* '35-1/30/72
Ivester R. Murphy, *Montana Tech* '35-12/4/72
William O. Nelson, *Illinois* '17-4/5/68
Ernest L. Osborne, *MIT* '14-3/73
Weldon T. Partridge, *Detroit* '33
Francis H. Pearson, *Illinois* '18-7/21/72
Henry T. Pearson, *Wisconsin* '31-6/14/74
Joseph B. Perry, *Minnesota* '11-4/15/72
Milfred A. Phillips, *Iowa* '37-12/9/71
Wayne M. Powell, *Kansas* '30
Herbert L. Prange, *Missouri at Rolla* '38-6/29/73
Malcolm H. Reed, *Syracuse* '32
Thomas L. Regan, *Colorado Mines* '28-1/12/72
Harry Reichelderfer, *Illinois* '18-8/2/73
Roger F. Rhoades, *Berkeley* '28-12/29/72
Donald A. Ricketts, *Charter S.D. Mines* '32
Fred Riggs, *Mich. Tech* '11
Ellis Robertson, *Carnegie Tech* '24-6/11/72
Wilford J. Robinson, *Purdue* '31-11/24/73
Elmer H. Rush, *Kansas* '29-1/5/73
Richard M. Ryan, *Kansas* '24



chapter news

The Chapter's meeting place was the topic for letters in this issue. Where does the Chapter meet for regular meetings and special ones? How often does it meet? How many Brothers attend? Also requested was an estimate of Chapter size this fall. Maybe you want to make suggestions to your Chapter on how things were in the good ol' days. Our student members appreciate alumni contact and interest.

ZETA CHAPTER **University of Kansas** **1942 Stewart Avenue** **Lawrence, Kansas 66044**



This year Zeta Chapter is installing a new pledge program, which has given the rush program a needed shot in the arm. Although the pledge class for this year has only eight men,

we are expecting at least seven to sign this fall. House membership includes eleven actives, two initiates, and two alums.

Early this fall, Zeta sponsored a Casino Party at Oliver Residence Hall, a coed dormitory. It was suggested by one of our Little Sisters, who is a resident of the dorm, since we annually have such a party. The party was a huge success, and with the money earned, we were able to expand our set of party materials.

Planned activities for the semester included a kegger on August 29 and our annual celebration for Founders' Day, held on Oct. 19.

MIKE GRAHAM

Corresponding Secretary

OMICRON CHAPTER **University of Iowa** **Engineering Building** **Iowa City, Iowa 52240**



Omicron Chapter enjoys a unique situation at a small engineering college where the lack of a house is not a distraction from its program. The Chapter meets bi-monthly in its Chapter room which is located in the engineering building. Iowa's College

of Engineering has its undergraduate classrooms and labs in one large complex, so that most students were centrally located. The Chapter room serves as a formal meeting room, lounge, and study area. Between classes Brothers can be found gathering in the Chapter room. This close contact fosters brotherhood and brings the brothers together when most needed. A Brother can find help with coursework and Brothers working on Fraternity projects can readily get others' help.

The room is open to anyone which serves as an open rush to expose engineering students to the Fraternity. Chapters with houses can benefit from this type of arrangement by having a room located in one of their engineering buildings, in addition to their house.

Corresponding Secretary

PHI CHAPTER **Purdue University** **416 North Chauncey Street** **West Lafayette, Indiana 47906**



The Chapter House at Purdue University serves its members not only in its living and study facilities, but also in its convenience for Chapter meetings. These meetings are, of course, essential for the successful operation of the Fraternity. Because of the importance of Chapter meetings, one hundred per cent participation on the part of the active Chapter is stressed.

Chapter meetings are held each week on Monday evening. Before each of these meetings an open meeting is held, which Little Sisters and pledges may attend. Even though it is still up to the Chapter to make final decisions, this is an excellent way to let others offer their suggestions.

As Fall begins, we find ourselves under capacity with sixteen actives and eleven pledges. However, we have several married Brothers on campus who will take an active role in Chapter decisions.

DAVID R. JORDAN

Corresponding Secretary

CHI CHAPTER

University of Arizona
1614 East Speedway
Tucson, Arizona 85719



For years Chi has planned to convert the garage behind our six-apartment Chapter house into a meeting room. Plans have continually been postponed until the present members decided it was time to finalize things. Chi Chapter is fortunate to have a number of local hardworking and loyal

alumni, Advisor A. E. Hamilton, Brother Gene Magee, Brother Andrew Marum, and Brother James Wares.

Brother Marum has agreed to serve as chief engineer for the project, Brother Magee has donated electrical fixtures, and Brother Wares has done the design of the room. The Chi Chapter Building Corporation Fund will provide a \$1,000 loan to the Chapter.

Plans call for a concrete slab sunken below grade to provide additional headroom, a stronger roof, interior walls and ceiling of gypsum board, and swing in doors at ends. As house funds allow, a circular fireplace, bookshelves, additional seating, and additional interior decorating are planned.

ERIC D. PITTELKAU
Vice Regent

KAPPA BETA CHAPTER

Mississippi State University
P.O. Box 2983
State College, Mississippi 39762



Kappa Beta Chapter's meetings are held anywhere conditions are satisfactory. These conditions are privacy, adequate size, and no charge. For our regular meetings we have been able to reserve a large room in the Student Union Building. More ceremonial meetings are held in a reserved room in a local church. A regular meeting

is held every Monday night. During pledging we find ourselves having several meetings during a one or two week period.

At regular meetings last semester we had 84% attendance. This absentee rate decreases for our special meetings to about 10%.

This fall we look forward to 38 undergraduate actives, two graduates, and four co-op members. Through more orderly and meaningful business meetings, we hope to improve attendance.

JOHN W. CATLEDGE
Corresponding Secretary

LAMBDA BETA CHAPTER
Tennessee Technological University
513 North Walnut Avenue
Cookeville, Tennessee 38501



Last spring Lambda Beta purchased the lease on a new house located directly across the street from the old location. The new home provides a much larger meeting room with a comfortable, business-like atmosphere.

The Brothers meet every Monday night at nine o'clock during regular school quarters. Special meetings are called occasionally to discuss projects, activities, or problems that arise. Professional Development meetings are usually held two or three times per quarter.

The Chapter is proud of the Brothers' attendance at last year's meetings. This fall thirty-two men will be returning to improve upon last year's 97% attendance record and to carry forth in the proud spirit of Lambda Beta.

DANIEL BRINK
Regent



Chris King, Southern Regional Director, makes an award presentation at the 1973 Southern Regional Conference.



Additions to Membership

ALPHA CHAPTER

- 843 Leland O. Anderson '75, New Albin, Iowa
844 Dane A. Casanova '77, Wausau, Wis.
845 Stephen J. Eskelson '76, Staples, Minn.
846 Norbert J. Kill '77, Morris, Minn.
847 Walter P. Leu '77, Anoka, Minn.

BETA CHAPTER

- 1070 Daniel J. Roesner '73, Mt. Morris, Mich.
1071 David A. Sparapani '75, Iron Mountain, Mich.
1072 David Komosinski '75, Muskegon, Mich.
1073 Stephen D. Smith '73, Flint, Mich.
1074 Jay A. Reinhardt '75, Evansville, Ind.
1075 Jeffrey D. Thomas '75, Evansville, Ind.
1076 David A. Sitko '74, Rochester, Mich.
1077 Michael J. Skoglund '75, Iron Mountain, Mich.
1078 Michael W. Slater '74, Cadillac, Mich.

GAMMA CHAPTER

- 1161 Curtis S. Clifton '75, Denver, Colo.
1162 Mark C. Seitz '75, Whittier Calif.
1163 Merlyn L. Salmon, Jr. '75, Denver, Colo.
1164 Dean D. Stoughton '75, Littleton, Colo.
1165 Neil A. Brown '76, Lafayette, Colo.
1166 Hoy E. Frakes, Jr. '75, Pueblo, Colo.
1167 David R. Hanson '75, Kansas City, Kan.
1168 Glen A. Gravender '75, Golden, Colo.
1169 Dennis J. Appelhans '76, Arvada, Colo.
1170 Robert A. Windels '74, Bayport, N.Y.
1171 John A. Barrow '74, Englewood, Colo.
1172 Thomas H. Borer '74, Albion, Nebr.
1173 William D. Gibson '75, Chattanooga, Tenn.
1174 Richard D. Dilley '74, Oshkosh, Nebr.
1175 Rodney W. Roberts '75, Boulder, Colo.
1176 Charles D. Anderson '74, Wheatridge, Colo.
1177 Henry E. Kolego, Jr. '74, Silverton, Colo.
1178 Michael D. Barnes '75, Hayden, Colo.
1179 John P. Wells '74, Englewood, Colo.
1180 Clifford R. Lippitt '75, Byers, Colo.
1181 Kim C. Harden '74, Salida, Colo.
1182 James D. Walton '75, Colorado Springs, Colo.
1183 Robert P. Magnifico '75, North Adams, Mass.
1184 Bruce R. Bergeson '75, Batavia, Ill.
1185 Holton C. Kearny '75, Colorado Springs, Colo.
1186 Russell W. Truby '76, El Paso, Tex.
1187 Clifford A. Maddocks '76, Willard, Ohio

- 1188 Terry A. Palm '76, Lyndhurst, Ohio
1189 Arthur C. Anderson, Jr. '75, Richton Park, Ill.
1190 David M. Drummond '75, Wray, Colo.
1191 John V. Genova, Jr. '76, Lakewood, Colo.
1192 William J. Engelhard '76, Longmont, Colo.

DELTA CHAPTER

- 1184 Clifford L. Greenblatt '74, Baltimore, Md.
1185 Kimberly N. King '75, Columbus, Ohio
1186 Daniel E. Riel '75, Dover, Ohio
1187 Leonard C. Uitenham '75, Cleveland, Ohio
1188 Edward G. Vasold '75, Baltimore, Md.
1189 Paul S. Kramer '76, Geneva, Ohio
1190 William A. Millavec '75, Cleveland, Ohio
1191 Ronald R. Papajeik '74, Cleveland, Ohio
1192 Michael H. Babiak '74, Lakewood, Ohio
1193 Mark D. Chapman '76, Youngstown, Ohio
1194 David M. Kuchta '76, Louisville, Ohio
1195 William D. Makuta '76, Tarentum, Penns.

EPSILON CHAPTER

- 890 Forrest D. Dill '75, Barstow, Calif.
891 David S. Behrens '75, Novato, Calif.

ZETA CHAPTER

- 761 Greg R. McNeisch '77, Winfield, Kan.
762 James T. Brockert '77, Wichita, Kan.
763 Steven T. Conner '75, Overland Park, Kan.

IOTA CHAPTER

- 1186 David E. Barczewski '73, Florissant, Mo.
1187 Raymond J. Christ '73, Arnold, Mo.
1189 John M. Costello '73, Glendale, Mo.
1190 David W. Kroeter '73, St. Louis, Mo.
1191 Dennis W. Larson '73, Springfield, Ill.
1192 James G. McAlpin '72, Hialeah, Fla.
1193 Dan W. McBride '73, Overland, Mo.
1194 Stewart A. Scott '73, Desoto, Mo.
1195 Robert C. Touzinsky, Jr. '72, Rolla, Mo.
1196 John R. Weekley '73, St. Louis, Mo.

MU CHAPTER

- 1014 Frank L. Newman '74, Tuscaloosa, Ala.
1015 Guillermo J. Cabrera '74, Augusta, Ga.

- 1016 Robert Q. Carter, Jr. '74, Goshen, Ala.
 1017 Michael D. Farmer '74, Henegar, Ala.
 1018 Elbert A. Gambel '76, Stevenson, Ala.
 1019 Hansel R. Hudson '76, Tuscaloosa, Ala.
 1020 Charles N. Sherer '75, Jasper, Ala.
 1021 William B. Welch, Jr. '75, Mobile, Ala.
 1022 Wilburn M. Baker '76, Tuscaloosa, Ala.
 1023 Andrew T. Brown '77, Tuscaloosa, Ala.
 1024 Patrick R. Moriarty '76, Colorado Springs, Colo.
 1025 James P. Ryan '74, Cottondale, Ala.
 1026 Bobby C. Hagler '76, Tuscaloosa, Ala.
 1027 Charles T. Swann '75, Northport, Ala.
 1028 Dennis R. Carroll '75, Mobile, Ala.
 1029 David T. Garner '75, Birmingham, Ala.
 1030 Byron S. Hill '76, Anniston, Ala.
 1031 Charles W. Martin '76, Florence, Ala.
 1032 Garvin Smith '75, Bankston, Ala.
 1033 Steven M. Smith '77, Birmingham, Ala.

XI CHAPTER

- 389 Curtis J. Coopmans '74, Green Bay, Wis.
 390 William H. Fuhrmann '75, Fond du Lac, Wis.
 391 Richard J. Giesler '74, Green Bay, Wis.
 392 Randall J. Bates '77, Brookfield, Wis.

OMICRON CHAPTER

- 836 Richard J. Baugh '75, West Liberty, Iowa
 837 Edward B. Eckert II '74, Penfield, N.Y.
 838 Steven C. Hoambrecker '74, Keokuk, Iowa
 839 David L. Eckstein '76, Des Moines, Iowa
 840 Micheal R. Gossman '76, Cedar Rapids, Iowa
 841 Wayne W. Ihde '76, Monona, Iowa
 842 James A. Kalina '74, Belle Plaine, Iowa
 843 Arthur R. Nelson '76, Libertyville, Iowa

PI CHAPTER

- 828 Ronald F. Cox '75, Charlottesville, Va.
 829 James J. Rooney '75, Levittown, Penns.
 830 Michael G. Ours '75, Alexandria, Va.
 831 Kenneth R. Robert '73, Chatham, N.J.
 832 Leonard I. Smith III '74, Trevilians, Va.
 833 William J. Vanewater '73, Charlottesville, Va.
 834 Franklin T. Philpott '75, Bassett, Va.
 835 Kevin D. Kimball '75, Wayne, Penns.
 836 Richard C. Crowe '74, Woodbury, N.J.
 837 Robert P. Haseltine '74, Arlington, Va.
 838 William L. Friar, Jr. '74, Lynchburg, Va.
 839 Milton J. O'Rear, Jr. '75, Charlottesville, Va.

RHO CHAPTER

- 832 Charles K. Conner, Jr. '75, Cherryville, N.C.
 833 James B. Ebert '74, Raleigh, N.C.
 834 Willard J. Feimster, Jr. '78, Morganton, N.C.
 835 Edward W. Henderson '76, Statesville, N.C.
 836 Richard L. Hill '74, Hendersonville, N.C.
 837 Joe W. Kent, Jr. '75, Greensboro, N.C.
 839 Michael K. Loftin '77, Ayden, N.C.

- 840 Albert B. Russell '75, Concord, N.C.
 841 Quinton L. Sorrell III '76, Durham, N.C.

TAU CHAPTER

- 727 Peter S. Checklick '76, Greenport, N.Y.
 728 David J. Abrahamian '76, Buffalo, N.Y.
 729 Randy J. Alstadt '76, Erie, Penns.
 730 Richard S. Campbell '76, Cadyville, N.Y.
 731 George O. Derby '77, Victory Mills, N.Y.
 732 Craig M. Edwards '76, Bloomsburg, Penns.
 733 Bernd H. Ludwig '77, Haverstraw, N.Y.
 734 Gregory A. Miledonis '76, Syracuse, N.Y.

UPSILON CHAPTER

- 792 James L. Garner '74, Gentry, Ark.
 793 Terence D. Ernst '75, Fayetteville, Ark.
 794 Jimmy R. Sanders '76, Nashville, Ark.
 795 Scott R. Steele '75, Benton, Ark.
 796 Frank W. Mitchell '75, Springdale, Ark.
 797 Randall G. Smart '76, Fayetteville, Ark.
 798 James M. Carroll '76, Benton, Ark.

PSI CHAPTER

- 566 Glenn C. Fredrick '76, Helena, Mont.
 567 John P. Sutton '75, Twin Bridges, Mont.
 568 Paul D. Kukay '76, Butte, Mont.
 569 Michael E. Kukay '76, Butte, Mont.
 570 John J. LeFever '75, Butte, Mont.

OMEGA CHAPTER

- 784 Jeff L. Bauer '77, Yankton, S.D.
 785 Michael L. Chaussee '75, Chamberlain, S.D.
 786 Michael F. Cole '77, Ellsworth AFB, S.D.
 787 Keith A. Fodness '77, Lennox, S.D.
 788 Mark J. Kenner '75, Rapid City, S.D.
 789 Bruce R. Kraft '75, Wessington Springs, S.D.
 790 Ricky L. Musick '77, Mitchell, S.D.
 791 Robert J. Quinn '77, Mitchell, S.D.
 792 Martin W. Schamber '77, Plankinton, S.D.

DELTA BETA CHAPTER

- 493 Craig S. Huff '76, Valley Station, Ky.
 494 Everett W. Culler '77, Lexington, Ky.
 495 Douglas A. Klotter '77, Anchorage, Ky.
 496 Alan D. Pike '77, Jeffersontown, Ky.
 497 Jack N. Shirrel '77, Frankfort, Ky.
 498 Ralph W. Wells III '77, Anchorage, Ky.

EPSILON BETA CHAPTER

- 260 Rodney W. Kochan '74, Fraser, Mich.
 261 Victor Khoury '74, Northville, Mich.
 262 Victor D. Lloyd '76, Ecorse, Mich.
 263 Glenn J. Metalski, Jr., '76, Warren, Mich.
 264 David E. Nawrocki '76, Dearborn, Mich.

(cont. on page 28)

Kappa Beta's Folder System

BY SCOTT FULTON

Many organizations carry on the majority of their business through the use of committees. Such is the case with Kappa Beta Chapter, with seventeen standing committees. Each committee has a chairman appointed by the Regent.

There is only one thing wrong with a committee system used in an organization where the membership is constantly changing. There is a somewhat inexperienced person heading the committee at the beginning of each semester.

Kappa Beta is attempting to eliminate the effect of this factor through the use of a committee folder system. This folder system is under the supervision of the coordinating committee and incorporates folders for each committee. The folders contain monthly and semester reports written by some member of the committee.

The manilla folders used to store the reports are

secured in a metal filing box attended by the chairman of the coordinating committee. As an aid to their individual committee responsibilities, the folders are equipped with the specific committee's duties as outlined in the Chapter's bylaws. This helps the chairman become familiar with the responsibility of his committee.

Kappa Beta's folder system was designed to aid committee chairmen. It also serves as a filing system providing a record and history of what was tried and accomplished in the past so that we can progress in the future. Space is provided for suggestions for future plans and improvements that the committee should consider.

The system is by no means without flaws. It is Kappa Beta's hope that it is a beneficial aid toward the betterment of the Chapter's organization and success.

Additions to Membership (cont.)

- 265 Ronald L. McCreedy '75, Detroit, Mich.
266 Luis A. Teran '76, Detroit, Mich.

ETA BETA CHAPTER

- 194 Donald E. Brown '76, Houston, Tex.
195 Jacinto Davila, Jr. '75, Houston, Tex.
196 William W. Patterson, Jr. '76, Houston, Tex.
197 Alfred J. Siegmund '77, Houston, Tex.
198 Victor M. Castro '75, Richmond, Tex.
199 Karl E. Compton '76, Houston, Tex.
200 Jerry E. Copeland '75, Montgomery, Tex.
201 John K. Drisdale, Jr. '75, Houston, Tex.
202 David R. Fountain '76, Houston, Tex.
203 Gregory R. Hurley '77, Bellaire, Tex.
204 William D. Peterson '76, Austin, Tex.
205 James C. Smith, Jr. '77, Houston, Tex.
206 Kenneth L. Stuchly '77, Houston, Tex.
207 Glenn W. Thorpe '77, Houston, Tex.

IOTA BETA CHAPTER

- 162 Robert J. Carulli '76, Taylor, Mich.
163 Kimball G. Cole '77, Grosse Pointe, Mich.
164 Terrence A. Diefenbach '75, Detroit, Mich.
165 Bruce M. Franz '77, Cleveland, Ohio
166 John R. Mennella '75, Valley Stream, N.Y.
167 Carey J. Whitfield '76, Detroit, Mich.
168 Christopher G. Donathan '75, River Rouge, Mich.
169 David C. Elmore '76, Depew, N.Y.
170 Arthur F. Gawronski '75, Allen Park, Mich.
171 John Frank Svihlik, Jr. '76, Cleveland, Ohio

- 172 Friedrich Wagenhals '76, Mansfield, Ohio
173 Wayne D. Panyan *Hon.* '62, Livonia, Mich.

KAPPA BETA CHAPTER

- 217 Paul S. Board '75, Sumrall, Miss.
218 James D. Davis '76, Gulfport, Miss.
219 Rodney E. Powell '75, Brandon, Miss.
220 John D. Bellew '77, Saucier, Miss.
221 Guy H. Davant, III '77, Jackson, Miss.
222 Thomas F. Forbes, Jr. '75, Cleveland, Miss.
223 Jerome A. Gilbert '77, Jackson, Miss.
224 Kenneth D. Parrish, Jr. '75, Tchula, Miss.
225 Rex G. Robinson '75, Grenada, Miss.
226 Mark G. Torres '76, Moss Point, Miss.
227 Carl R. Williams '77, Starkville, Miss.

LAMBDA BETA CHAPTER

- 129 Jeffrey L. Ballard '75, Camden, Tenn.
130 George M. Carney '76, Nashville, Tenn.
131 Frank N. Cook '76, Lewisburg, Tenn.
132 Dale J. Hutsell '76, Athens, Tenn.
133 Eugene H. Saylor '76, Sparta, Tenn.
135 Jack C. Adkisson '77, Monterey, Tenn.
136 Lester E. Blair '75, Rockford, Ill.
137 William A. Freeman '75, Nashville, Tenn.
138 Byron T. Johnson '77, Memphis, Tenn.
139 Paul A. Rankin '75, Columbia, Tenn.

MU BETA CHAPTER

- 153 Thomas L. Catalfamo '77, Delran, N.J.
154 Philip C. Gould '77, Greenfield, Ind.
155 Luther H. Childs '78, Middletown, Ohio

NOTICE OF ALUMNUS ADDRESS

Send names and addresses of any alumni you know who *may* not be receiving THE GEAR to Theta Tau Central Office, 13 Sona Lane, St. Louis, Missouri 63141.

Name Chapter Class
Year

Street

City State ZIP Code

Reported by Chapter Class
Year

Street

City State ZIP Code

Be sure the Theta Taus you know are receiving THE GEAR.

RECOMMENDED STUDENTS

Mail to Robert E. Pope, Executive Secretary, 13 Sona Lane, St. Louis, Missouri 63141. Include relatives and other recommended students at accredited schools whether or not Theta Tau yet has a chapter at that school.

I recommend that the following student(s) in engineering be considered for Theta Tau membership:

Name School

Mailing Address Major

..... Expected Graduation Date

Remarks:

Signed Chapter Year

NOTICE OF DECEASED MEMBER

Please give as complete information as possible, including biographical data known, clippings, etc. Send to Theta Tau Central Office, 13 Sona Lane, St. Louis, Missouri 63141.

Name Chapter Class
Year

Address

Date and place of death

Name and address of nearest relative

Reported by Chapter

Address

Relationship to deceased

CHANGE OF ADDRESS NOTICE

Send to Theta Tau Central Office, 13 Sona Lane, St. Louis, Missouri 63141.

Name _____ Chapter _____ Class _____
Year _____

Old address:

Street _____

City _____ State _____ ZIP Code _____

New address:

Street _____

City _____ State _____ ZIP Code _____

Permanent address from which mail will always be forwarded to you:

Street _____

City _____ State _____ ZIP Code _____

GIFTS TO THETA TAU

Make checks payable to Theta Tau Fraternity and mail to Robert E. Pope, Executive Secretary, 13 Sona Lane, St. Louis, Missouri 63141.

I enclose the following contribution to Theta Tau:

For the Operating Fund \$ _____

For the Founders' Memorial Fund \$ _____

Name _____ Chapter _____ Class _____
Year _____

Street _____

City _____ State _____ ZIP Code _____

ALUMNI NEWS

THE GEAR needs news about you and other alumni. Include promotions, job changes, professional honors, family news. Send to Theta Tau Central Office, 13 Sona Lane, St. Louis, Missouri 63141.

Name _____ Chapter _____ Class _____
Year _____

Address _____

News of yourself and/or others _____



Ten Years Ago

Theta Taus across the country were pleasantly surprised when they read their daily paper during Theta Tau's Sixtieth Anniversary week. On October 19, 1964, Milton Caniff, the creator of Steve Canyon, honored the Fraternity in his "Steve Canyon" comic strip. Mr. Caniff's association with Theta Tau is through General Curtis E. LeMay, Sigma '29. The autographed original of the strip is on display at the Central Office.

Twenty-Five Years Ago

The Russell G. Glass Convention was held in Chicago, Illinois. During the preceding biennium mem-

bership had passed the 10,000 mark. Norman B. Ames was selected the Grand Regent for the biennium.

Fifty Years Ago

Feature articles in *The Gear* covered the reconstruction of the Nicollet Hotel in Minneapolis, and operations at Ohio Copper Company's mine at Bingham Canyon, Utah, and United Verde Copper Company.

Research studies of members of Lambda Chapter were keynoted showing men of other Chapters what Lambda men were doing in this line.

Convention Set for Indianapolis

Delegates, national officers, and other members from across the nation will assemble in Indianapolis, Indiana, for the Fraternity's Seventieth Anniversary Convention opening Friday afternoon, December 27.

The Hilton Inn at The Airport will be headquarters for the Convention. It is located on airport property next to Highway I-465, providing easy access for those travelling by either automobile or plane.

Phi Chapter at Purdue University will serve as Host for this Thirtieth Biennial Convention of the Fraternity. Phi Chapter previously hosted a Theta Tau Convention in 1952. The convenient central location of Indianapolis (twenty-one chapters within 600 miles) should assure maximum attendance by student members as well as by alumni. By sharing the Delegate's travel reimbursement based on air

fare, it is hoped that sizable delegations will be able to attend from most chapters.

The fine host chapter should assure a smoothly moving Convention. Although there is much work to be accomplished and difficult decisions to be reached, there will also be an opportunity for fellowship and relaxation. Altogether, this should be a memorable occasion for all who attend.

Highlight of the Convention will come Sunday evening with the model initiation ceremony followed by the Reception and Convention Banquet. Convention invitations and programs will be mailed in advance to alumni in the area, but additional information may be requested early from the Theta Tau Central Office.

THETA TAU FRATERNITY
13 Sona Lane
Saint Louis, Missouri 63141

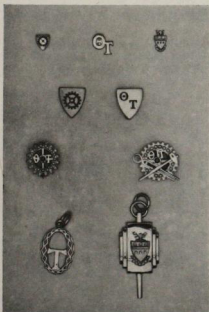
Address Correction Requested

Non-Profit
U.S. POSTAGE

PAID
Menasha, Wisconsin
Permit No. 5

To Parents of Theta Taus:

Your son's GEAR of Theta Tau is sent to his home after graduation. We hope you enjoy looking through it. If he no longer lives at home, please send his permanent address to the fraternity's Central Office. Thank you.



Jewelry available through Central Office: For information and prices contact Theta Tau Central Office, 13 Sona Lane, St. Louis, Mo. 63141.

JOB PLACEMENT

If you are investigating careers, traveling to far points to see employers on an initial basis is no longer necessary. Top employers now travel to see you in one place at one time at Career Weekends. The Theta Tau Executive Council has joined with Lendman Associates to make that firm's Career Weekends available to members. Candidates must be approaching graduation or have a minimum of a four-year college degree. Send your resume to Theta Tau Coordinator, Lendman Associates, P.O. Box 14027, Norfolk, Virginia 23518.

