

SPRING 1966

VOLUME LV

NUMBER 2



The GEAR
of THETA TAU

THE EXECUTIVE COUNCIL

has authorized a formal plan for

VOLUNTARY CONTRIBUTIONS TO THETA TAU FRATERNITY

by its alumni and other interested persons. These contributions may be by periodic or occasional gifts or bequests.

Specifically, persons may contribute to a "Founders' Memorial Fund" or give "unrestricted gifts." Funds contributed to the Founders' Memorial Fund are to be invested in securities (stocks, bonds, and mortgages) with preference to be given to loans to Theta Tau house corporations for the purpose of building, buying, remodeling, or furnishing chapter houses. One-half of the return on invested funds will be reinvested, and the other one-half will be used as directed by the Trustees (Executive Council). These gifts are not deductible for income tax purposes. Unrestricted gifts will be used in the operation or promotion of Theta Tau Fraternity as directed by the Trustees.

No minimum amount has been set, and all gifts are welcome. The form on page 56 is provided for those interested.

BEQUESTS TO THETA TAU

Bequests to Theta Tau may be made using the following suggested form:

"I give, devise, and bequeath to Theta Tau, national professional engineering fraternity, with its Central Office located at 13 Sona Lane, St. Louis, Missouri 63141, \$ _____ (or 'the following described property, or securities'), as an unrestricted gift (or 'as a contribution to its Founders' Memorial Fund')."



The Gear of Theta Tau

SPRING 1966

VOLUME LV NUMBER 2

Board of Editors

WILLIAM E. FRANKLIN, *Editor-in-Chief*

J. W. HOWE

Contents

Serious Business, Good Times at Five Regional Conferences	2
Comments from the Central Office	9
Engineers' Week Well Observed by Omega	10
Delta Beta Tutors Freshmen at Louisville	10
Lowe is Winner of Tau Beta Pi Contest	11
Theta Tau Publications Are Announced	11
Alumni News	12
<i>Donald McLaughlin Retires as California Regent</i>	12
<i>Theobald Heads U.S. Industries Division</i>	13
<i>Dr. Williams is New Dean of Engineering at Utah</i>	14
<i>New Tau Beta Pi Council Includes Theta Taus</i>	14
<i>L. G. Feil is Promoted by the Corps of Engineers</i>	16
<i>Top Navy Cartographer Warren C. Crump Retires</i>	17
<i>J. H. Douma Advances at Sunray DX Oil Company</i>	17
<i>Zahour Honored by Illuminating Engineering Society</i>	18
<i>Prof. Lear Returns to Alabama as Associate Dean</i>	19
In Memoriam	20
Alumni Notes	22
Contributors to Theta Tau Progress	36
25 and 50 Years Ago in Theta Tau	37
Chapter News	38
Additions to Membership	47
MIT Members Back on Mailing List	49
Theta Tau Directory	50
Fraternities—Not a Lonely Crowd	54
Theta Tau Authors Being Sought	54

Photo credits: Page 3, Noel Strader II; page 4, page 5, Garn Hatch; page 6, Garn Hatch, National School Studios, Inc.; page 8, Garn Hatch, Lee Young; page 15, Tau Beta Pi; page 18, Don Jurick Studio; page 19, University of Florida; page 20, Tau Beta Pi.

• THE GEAR is the official publication of Theta Tau, national professional engineering fraternity. It is published fall and spring. The magazine is devoted to matters of Fraternity interest and is sent at no cost to alumni whose addresses are on record at THE GEAR office. • Send change of address, editorial, and business correspondence to the Editor-in-Chief, William E. Franklin, 7409 Village Drive, Shawnee Mission, Kansas 66208. • THE GEAR is printed by Allen Press Inc., Lawrence, Kansas. Third class postage has been paid at Lawrence, Kansas.

Serious Business, Good Times at Five Regional Conferences

Once again the chapters and national officers of Theta Tau have met for discussion and fellowship in five Regional Conferences. These meetings are held in the years between Biennial Conventions. They make possible the gathering of sizeable numbers of students and alumni for the mutual benefit of all chapters.

At each Conference reports from the chapters on their activities of the past two years and panel discussions provided many opportunities for the exchange of ideas. Typical subjects were pledge training, rushing, chapter headquarters, alumni relations, chapter activities, professional development, expansion, and chapter finances. Ritual Workshops and Officers Workshops were also held.

The Conferences were not all work. They included luncheons, banquets, tours of the campuses and local points of interest, and entertainment.

Northern Conference

The Northern Regional Conference, hosted by Xi Chapter, was held at Camp Wakanda in Madison, Wisconsin, November 25-27, 1965. Alpha, Beta, Xi, and Omicron Chapters were represented. Regional Director James L. Reynolds and Executive Secretary Robert E. Pope were the national officers present. Ronald M. Peterson and Richard A. Peterson of Xi Chapter were chairmen of the Conference.

The first event of the Northern Conference was a Thanksgiving dinner Thursday evening. Brother Pope gave the keynote address, "A Challenge for Theta Tau." The evening and the next day were filled with chapter reports and discussions.

A pleasant break in the day's activities was a tour of the Wisconsin engineering campus, including the nuclear reactor facilities. In the afternoon the group toured the

U. S. Forest Products Laboratories, then attended the Chapter Officers Workshop.

The Conference Banquet was held Friday evening, with a welcome by Prof. Kurt F. Wendt, dean of engineering at Wisconsin, and an address by Erhardt C. Koerper, president of the Wisconsin Society of Professional Engineers. A dance followed the banquet.

The Conference closed Saturday afternoon after another day of panel discussions and a Ritual Workshop. Regional Director Reynolds presented both the Man-Miles plaque and the Best Presentation award to Beta Chapter. Xi Chapter presented souvenirs to each chapter and the national officers present.

Southern Conference

Eta Beta Chapter hosted the Southern Regional Conference at the White House Inn in Houston, Texas, December 4-5, 1965. Chapters attending were Zeta, Iota, Mu, Upsilon, Eta Beta, and Kappa Beta. Regional Director Fred E. Armstrong, Jr. and Executive Secretary Robert E. Pope represented the national Fraternity. Chairman of the event was Edwin Pete Herrmann of Eta Beta Chapter.

Saturday the agenda was filled with chapter reports and discussions. Before lunch the group adjourned for a tour of the nearby Astrodome. At luncheon Dean C. V. Kirkpatrick of the Cullen College of Engineering at Houston welcomed the delegates and Regional Director Armstrong spoke briefly. More discussions and a Chapter Officers Workshop rounded out the day.

Sunday morning the Ritual Workshop and further discussions were held. The Conference Banquet was held Sunday noon. Brother Armstrong presented the Man-

(article continues on page 7)



SOUTHERN REGIONAL CONFERENCE

First row: Robert M. Webb; Carl Gibbons; Pete Herrmann; Rich Cleveland; John C. Killoran, Jr.; William McMoran; Wendell H. Brough; Roy Smith; Stuart White; Henry Dale Steen; James Lancaster; Stanley Bernard Jackson; Mickey Leon McReynolds; Wilfred S. Litzler; James Carson Jackson. *Second row:* Noel R. Strader II; James R. Simmons; Leonard Wideman, Jr.; Gus Vratisnax; Noel G. Nash, Jr.; Donald R. Ballard; Ben J. Brookman; Robert William Miller; Jim T. Womble; Kent Burnett; Thomas H. Parker; Joseph Albritton; William J. Leach; Robert E. Pope; Jeffrey L. Herron; Fred E. Armstrong, Jr.; Leonard G. Gibson, Jr.; Sammy J. Seals; Miles A. Smither.



Mu Chapter delegates Sammy Seals, Leonard Gibson, and Bernard Jackson. Is Gibson about to take a swim?



Fred Armstrong, Southern Regional Director (center), poses with Bob Webb of Kappa Beta Chapter on the left (Man-Miles award) and John Killoran, Jr., of Iota Chapter on the right (Best Presentation award).



At the close of the Southern Conference, Eta Beta members Stuart White, James Johnson, Wayne Small, Noel Strader, and Rich Cleveland took time to pose.



The Outstanding Presentation award was shared by Tom Roberts of Epsilon Beta and Gary Cordrey of Sigma at the Central Regional Conference. George Dodd (at right) made the presentation.



Alan Mateja of Delta Beta receives the Man-Miles award from George Dodd, Central Regional Director. Richard Lynch, Grand Marshal, observes.



CENTRAL REGIONAL CONFERENCE

First row: Joel Schwartz, Delta Beta; James Klein, Delta Beta; Harold Hartman, Iota Beta; James Robertson, Phi; Richard Gerstle, Delta Beta; George Dodd, Regional Director. *Second row:* Bruce Winkler, GMI; Ronald Coussens, GMI; John Polkowski, Epsilon Beta; Daniel Gaulin, Iota Beta; Andrew Nolan, Epsilon Beta; Kent Williams, Phi; Ted Nowak, Epsilon Beta; Robert Skrentner, Epsilon Beta; Otto Pfahl, Jr., GMI; Ron DeNadai, Iota Beta; Ronald L. Dowell, Sigma; Robert G. Smith, Sigma. *Third row:* John Murray, GMI; Thomas Downs, GMI; Alan Mateja, Delta Beta; Richard Edwards, Epsilon Beta; Michael Stewart, Phi; Robert Heyman, GMI; Richard Lynch, Grand Marshal; John Hopkins, Iota Beta; Thomas M. Roberts, Epsilon Beta; Gary Cordrey, Sigma; Dennis Myers, Sigma; Robert Purcell, Iota Beta.



Larry Baruth of Omega receives the Outstanding Presentation award for his Chapter from Regional Director Garn Hatch.



The Omega Chapter delegation: Jerry Pekarek, Ed Opbroek, Don Hollister, Bob Eckert, Larry Baruth, Larry Mohr.



The Psi Chapter delegation: Bob Watts, Gordon Austin, Carl Swanson, Bill Lehfeldt.

Kenneth Nichols of Theta Beta receives the Man-Miles award for his Chapter from Jack Payne, Special Representative for California, at the Western Regional Conference.



Epsilon Chapter's panel presentation on rushing. Gary Burnham is speaking while Mike Roshek, Jim Vernon, and Pledge Bill Jackson wait their turns.





"Values of Theta Tau" being presented by Jerry Ellison and John Phillips of Lambda plus Don Balls and Bart Kunz of Theta Beta.



"Chapter Relations" is the topic being presented by Fred Emerson of Theta Beta Chapter. The rest of the panel members are Gary Swofford, James Grant, Kenneth Nichols, and Tom Draeger.



WESTERN REGIONAL CONFERENCE

First row: Gordon Hurley, Lambda; Ron Fazio, Lambda; Chuck Thompson, Lambda; Jay Thorpe, Grand Outer Guard; Garn Hatch, Regional Director; Gordon Schmitt, Lambda; Larry R. Cooper, Chi; Tom R. Draeger, Theta Beta. *Second row:* Bob Watts, Psi; Richard Oishi, Lambda; Paul Dimond, Lambda; Jerry Pekarek, Omega; Sam Whitten, Lambda; Gary Burnham, Epsilon; Steve Matsuura, Lambda; William R. Lehfeldt, Psi. *Third row:* Carl Swanson, Psi; Bill Faris, Lambda; Bart Kunz, Zeta Beta; Mike Roshok, Lambda; Dave Wengert, Lambda; Jim Vernon, Lambda; Jerry Ellison, Lambda; Gordon T. Austin, Psi. *Fourth row:* Robert Clemons, Lambda; James Grant, Theta Beta; Larry Mohr, Omega; Fred Emerson, Theta Beta; Kenneth L. Nichols, Theta Beta; Larry Baruth, Omega. *Fifth row:* Mike Kirkman, Lambda; Robert Eckert, Omega; Don L. Balls, Zeta Beta; Don Hollister, Omega; Gary Swofford, Theta Beta; Gary Garner, Lambda; Ed Ophrock, Omega. (Jack Payne, Special Representative for California, was not present for photo.)

Miles award to Kappa Beta Chapter and the Best Presentation award to Iota Chapter. The banquet address was "A Challenge for Theta Tau" by Brother Pope.

Central Conference

The Central Regional Conference was held in Detroit, Michigan, November 26-27, 1965, with Epsilon Beta and Iota Beta Chapters as hosts. Andrew Nolan, Epsilon Beta, and Daniel Gaulin, Iota Beta, were Conference chairmen. Attending were Sigma, Phi, Delta Beta, Epsilon Beta, and Iota Beta Chapters and GMI Colony. Regional Director George G. Dodd, Grand Marshal Richard Lynch, and Grand Inner Guard Charles E. Wales were the national officers present.

On Friday the Conference was held on the Wayne State campus.

The first event was a luncheon with the keynote address given by Dr. Harold G. Donnelly, Epsilon Beta Chapter Adviser. Chapter reports, panel discussions, and the Officers Workshop filled the afternoon.

Events on Saturday were held on the University of Detroit campus. The Ritual Workshop and more discussions kept the delegates busy all day, except for the scheduled luncheon.

The Conference Banquet was held Saturday evening. Delta Beta Chapter won the Man-Miles award and Sigma and Epsilon Beta Chapters shared the award for the Best Presentation.

Eastern Conference

Chapters of the Eastern Region gathered on January 29-30, 1966 in Raleigh, North Carolina, with Rho Chapter as host. Theta, Rho, Tau, and Gamma Beta Chapters were represented. Regional Director John M. Dealy and Grand Vice Regent C. Ramond Hanes represented the Executive Council. Chairman of the event was Fred Goodnight, Rho Chapter.

Chapter reports and discussion were the order of the day Saturday, with a break for luncheon. The Conference Banquet and a dance were held Saturday night.


On Sunday further discussion and the Chapter Officers and Ritual Workshops were held. At the close of the Conference the Man-Miles award was presented to Gamma Beta Chapter and Rho Chapter won the award for the Best Presentation.

Western Conference

The Western Regional Conference was held November 26-27, 1965 at the University of Utah in Salt Lake City with Lambda Chapter as host. Epsilon, Lambda, Chi, Psi, Omega, Zeta Beta, and Theta Beta Chapters were present. National officers attending were Regional Director Garn Hatch, Grand Outer Guard Jay N. Thorpe, and Special Representative for California Jack Payne. Chuck Thompson and Ron Fazio of Lambda Chapter were chairmen of the event.

An informal get-together was held Thursday night for those already present, and the Conference got underway Friday morning. Panel discussions were presented by the chapters and by alumni of the Intermountain and Pacific Northwest Alumni Associations. After a break for lunch the discussions continued, with the Ritual Workshop also held that afternoon.

The Conference Banquet was held Friday evening. The Intermountain Alumni Association had rescheduled its Founders' Day Banquet to coincide with this event, and a large number of alumni were present. Comments and greetings were expressed by officers present, and the principal speaker was Dr. Theron J. Parmley, a charter member of Lambda Chapter and professor of physics at Utah. Entertainment for the evening was provided by Larry Migliaccio on the classical guitar.

Saturday morning the discussions resumed, and the Conference concluded with the awards luncheon. The award for the Best Presentation went to Omega Chapter, and Theta Beta Chapter won the Man-Miles award. Most of the delegates then made a tour of the Kennecott Copper Company, which was conducted by Kaye Olson, a Lambda alumnus. 



Chi Chapter makes a presentation: Steve Matsoura, Larry Cooper, and Gary Garner.



Vice Regent James Atkins and Regent Robert Anderson of Rho Chapter accept the Best Presentation award from Eastern Regional Director John Dealy.



Regent Lee Young and Doug Lowe of Gamma Beta Chapter accept the Man-Miles plaque from John Dealy at the Eastern Regional Conference. This delegation earned their award when they returned home during the winter's worst snow storm.

Brothers Joe Martino and Doug Lowe watch Bruce Howard and Bill Summers (at front of car) dig out of the snow bank their car landed in coming back from the Eastern Regional Conference. Contrast this scene with the Southern Conference setting at Houston.



Comments from the Central Office

We stand between the series of five Regional Conferences held earlier this school year, and the Biennial Convention scheduled for Christmas week, 1966. Both types of meetings provide an opportunity for student members and alumni to experience the close bonds of fraternal fellowship which unite all those within our national Fraternity, and to share ideas and plans both in official sessions and in informal discussions. It is hoped that a large number of alumni in the area will avail themselves of the chance to attend the forthcoming Convention.

Although many alumni are seldom able to attend the Convention or Regional Conferences, or regularly to meet other alumni outside their own immediate area, there is available a convenient opportunity to make such contacts which should not be overlooked. Every national or regional meeting of a professional or technical society provides a chance for local and visiting Theta Tau alumni to get together in conjunction with the meeting.

Some successful Theta Tau events have already been held in this way. Our national officers would like to work with interested individual members in the host city in setting up such an event. If a Chapter or alumni organization is located there, it could effectively make the arrangements, following suggestions from the Central Office. Any who are able to help in this way should let us know of scheduled meetings.

Another way in which an alumnus may contribute to the Fraternity through his



professional position is in the professional development program of a nearby Chapter. If you are willing to make a presentation on an appropriate professional topic, or to help a Chapter plan a valuable professional development program for the year, please contact either the Central Office or the Chapter.

Still another valuable way in which an alumnus may help lies in providing names and other information on engineering students who would make good members, both relatives and acquaintances, whether or not their school is one at which there is already a Theta Tau Chapter.

The increasing number of established alumni organizations is gratifying, but there are still many areas in which help of local alumni is needed to establish or to revitalize an alumni organization so that all Theta Tau alumni there may enjoy current personal contact with the Fraternity.

Finally, an increasing number of members are contributing in a way unknown in Theta Tau until recently: through unrestricted gifts or gifts to the Founders' Memorial Fund, as can be seen from the lists of donors in recent issues of THE GEAR.

A form on the last page of the magazine may be utilized in recording gifts and recommendations for membership.

To all alumni who are continuing their active participation in Theta Tau affairs, the national officers express their sincere thanks.

ROBERT E. POPE

REPLACEMENT SHINGLES

Alumni and student members: You may obtain a replacement "shingle" through the Central Office if your original has been lost or if you have changed your name. The cost is \$1.25. Direct all requests to Robert E. Pope, Executive Secretary, 13 Sona Lane, Saint Louis, Missouri 63141.

Engineers' Week Well Observed by Omega

by John Larson, Omega Regent

Omega Chapter observed National Engineers' Week by sponsoring a program in connection with a regular meeting of the local chapter of the State Society of Professional Engineers. All engineering students and faculty members were urged to attend.

The speaker for the event was Lt. Col. Philip J. Erdle, head of the Department of Mechanics at the Air Force Academy. Dr. Erdle spoke on "A Fifty Year Look Ahead in Engineering," which was a very interesting topic to all of us studying to become engineers and also those who are

practicing engineering now. The insight gained by attending this program cannot be overemphasized; it presented an opportunity to examine what will be required of us as engineers in the next fifty years.

All of us who attended were greatly impressed by Dr. Erdle's speech and all went home from the program thinking it was well worth attending. The successful event would not have been possible without the efforts of Brother Mike Hessman, Omega Adviser William Coyle, and the president-elect of South Dakota Tech, Dr. Harvey Frazer.

Delta Beta Tutors Freshmen at Louisville

Delta Beta Chapter sponsored a successful tutoring session for freshmen at the University of Louisville last fall. The sessions were open to all freshmen and were taught by Bob Fowler, Delta Beta rush



This group of freshmen are voluntary pupils in the Delta Beta tutoring session.



Brother Bob Fowler makes a point during the Delta Beta tutoring session.

chairman and pledgemaster. He reports that the sessions were not only a useful service, but proved to be one of the Chapter's most effective rushing tools. Many of the men tutored are pledging Delta Beta.

Lowe is Winner of Tau Beta Pi Contest

The semi-annual Tau Beta Pi pledge essay contest for spring 1965 was won by Douglas W. Lowe, *Gamma Beta '67*. The national competition offers an award of \$100 and a certificate for first place. Brother Lowe is majoring in structural engineering at the George Washington University. After graduation in 1967 he plans to do advanced work for a doctor's degree. He is a student assistant in the materials lab and is presently working part-

time at the National Bureau of Standards.

Brother Lowe is a member of Sigma Tau, Phi Eta Sigma, ASCE, and the Engineers' Council. He is treasurer of his Tau Beta Pi chapter, and is scribe and past corresponding secretary of Gamma Beta Chapter of Theta Tau. He participates on the varsity crew and was chairman of Engineers' Open House. He holds the Brawner Award, a full-tuition scholarship, and was the recipient of a student prize from the ASTM.

Theta Tau Publications Are Announced

Three new or revised publications have been issued recently by Theta Tau. A number of other publications issued through the Central Office are currently being revised and reprinted.

Constitution and Bylaws of Theta Tau

A new printing of the Constitution and Bylaws of Theta Tau was announced in January 1966. This is the sixth printing of the Constitution.

John M. Dealy, chairman of the Constitution Revision Committee, directed the publication of this edition. In the past he had been instrumental in proposing a number of the amendments to the Constitution and Bylaws which have been included in this latest printing. William K. Rey, Grand Regent, and Robert E. Pope, Grand Scribe, also contributed to the reprinting efforts. The editing involved changes in wording, rearrangement of certain sections, and modification of nomenclature and procedures to conform to current practices in the Fraternity.

The book is bound in a dark red cover imprinted in gold. Copies of the Constitution are the property of the national Fraternity and are loaned to the chapters, alumni associations, and national officers.

Theta Tau Sings

A Theta Tau songbook is now available

to the chapters. The book includes both Theta Tau and engineering songs.

The publication of *Theta Tau Sings* was under the direction of the GEAR Editor. However, he reports that publishing a songbook without being able to read music is a hazardous undertaking. Music for the Theta Tau songs was provided by Stuart D. Culp, *Kansas '56*, and the art work was done by Robert J. Rehagen, *Kansas '61*.

This is the first attempt by Theta Tau to put songs of the Fraternity in book form as a national publication. Songs for the book came from several sources, including chapter songbooks, old GEARS, and the Theta Tau Pledge and Membership Manual.

The engineering songs carry such titles as "St. Patrick Was an Engineer" and "Hyperbolic Tangent." However, the Editor refrained from including songs commonly sung only at stag parties.

Organizing a New Chapter

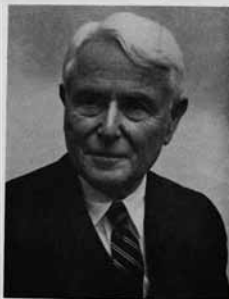
The Executive Secretary, Robert E. Pope, has issued a revised version of the manual used to guide student groups in organizing a new chapter of Theta Tau.

This twenty-page manual outlines the steps a group must take to become a chapter of Theta Tau. A section is devoted to the Theta Tau colony program. A professional development program and a suggested set of bylaws for the local fraternity or colony are included.



Alumni News

Donald McLaughlin Retires as California Regent



DR. DONALD H. McLAUGHLIN, *California (Berkeley)* '14, has retired from the Board of Regents of the University of California after 15 years of service, including two years as chairman. His association with the University goes back 56 years; he has been student, professor, dean and Regent. Praise for his service came from many, including California Governor Brown.

Brother McLaughlin is chairman of the board of Homestake Mining Company and vice president of San Luis Mining Company. After graduation from the University of California, he earned his Ph.D. from Harvard University. He served in World War I, then began his mining career as chief geologist for Cerro de Pasco Copper Corporation in Peru. From 1925 to 1941 he taught at Harvard; he also was a consulting

geologist for Homestake during this period.

In 1941 Brother McLaughlin returned to Berkeley as professor of mining engineering. He was dean of the College of Engineering in 1942 and 1943.

During the period 1943 to 1945, Brother McLaughlin was vice president and general manager of Cerro de Pasco Copper Corporation, New York and Peru. He became president of Homestake in 1944 and chairman of the board in 1961.

He is or has been a director of Cerro de Pasco Copper Corporation, Empire Trust Company, American Trust Company, International Nickel Company of Canada, San Luis Mining Company, the Bunker Hill Company, Wells Fargo Bank, and Western Air Lines.

In addition to his service to the University of California, Brother McLaughlin has served on the National Science Board, on the Advisory Committee of the U. S. Geological Survey, and on two advisory committees—Raw Materials and Plowshare Projects—for the Atomic Energy Commission.

Brother McLaughlin has been awarded the Rand Medal of the AIMMPE and the Ambrose Monell Medal and Prize of Columbia University. He has been awarded honorary degrees by South Dakota School of Mines and Technology, Michigan College of Mines, Montana School of Mines, and Colorado School of Mines.

He is a member of Phi Beta Kappa, Sigma Xi, Tau Beta Pi, Kappa Sigma, the AIMMPE (president 1950), Society of Economic Geologists (president 1938), Mining and Metal Society of America (president 1953), Sociedad Geologica del Peru, the American Academy of Arts and Sciences, and is a Fellow of the Geological Society of America.

Theobald Heads U.S. Industries Division

DR. JOHN J. THEOBALD, *Columbia '28*, has been named president of the Educational Science Division of U. S. Industries, Inc. His long and varied career has given him much experience in various phases of education.

After receiving his C.E. degree from Columbia, Brother Theobald worked as a design engineer for Concrete Steel Company and as superintendent of Public Works for the Village of Lawrence. In 1931 he became an instructor at City College of New York, where he eventually became professor of civil engineering and dean of administration in 1946.

He earned his doctorate in political science at Columbia in 1935. During the Thirties and Forties he was a consultant for the Village of Lawrence, Village of Hewlett, Bay Park, Village of Cedarhurst, the Statistical Division of W.P.A., and the Bureau of the Budget, Washington, D.C. From 1943 to the middle Fifties, Brother Theobald was an adjunct professor in the School of Engineering at Columbia University.

In 1949 Brother Theobald became president and professor of political science at Queens College, one of the four city colleges of CCNY. He also served for three consecutive years as chairman of the Administrative Council, a position normally rotated among the presidents of the City Colleges.

In 1956 he was granted a leave of absence to serve as deputy mayor of New York. This was an administrative post as executive officer of the mayor's office.

From 1958 to 1962 Brother Theobald was superintendent of schools of the City of New York. Here he was in charge of a system with over 1,000,000 pupils and an annual budget of \$750,000,000. Among other things he instituted the Higher Horizons Program and initiated the open enrollment program, both pointed at better education for the potential dropout.

Brother Theobald became vice president



of U. S. Industries, Inc. in 1962 and president of the Educational Science Division in 1965.

He is a director of the Jamaica Savings Bank, a member of the board of New York Institute of Technology, a member of the advisory board of the School of Education of New York University, and a member of the board of the National Conference of Christians and Jews. Other affiliations are Y.M.C.A., Boy Scouts of America, Foundation on Automation and Employment, and the Child Service League. He has served on the board of the American Museum of Natural History.

Brother Theobald has been awarded honorary degrees by Columbia University, St. John's University, Syracuse University, Wagner College, Brooklyn Polytechnic Institute, Long Island University, and Hofstra College.

Dr. Williams is New Dean of Engineering at Utah



DR. MAX L. WILLIAMS, JR., *Carnegie Tech '42*, has been appointed dean of the College of Engineering at the University of Utah. He is also professor of engineering and director of the Institute of Materials Research at the University. Brother Williams went to Utah from California Institute of Technology, where he had been a professor for the past five years.

After his graduation from Carnegie Institute of Technology, he served as a captain in the U. S. Air Force during World War II. He then obtained his graduate degrees at Cal Tech, where he was a lecturer and research fellow, and later a professor.

Brother Williams' general field is solid

mechanics, especially in the fracture of metals and non-metals, wave propagation, solid propellant rocket design, and uses of high temperature materials for aeronautical and related applications. He was in charge of the Photoelastic Laboratory at Cal Tech, and has done much consulting.

His memberships include Sigma Xi, Tau Beta Pi, the American Association for the Advancement of Science, and the Society of Experimental Stress Analysis. He is an associate fellow of the American Institute of Aeronautics and Astronautics and a senior member of the American Rocket Society.

In 1965 he was a member of the organizing committee of the International Conference on Fracture, Tokyo, Japan. He is a member of the joint Army-Navy-Air Force Physical Properties Panel, Solid Propellant Information Agency. Also in 1965 he was chief editor of *International Journal of Fracture Mechanics*, published by Noordhoff Publishers. He is a reviewer for AIAA, Society of Experimental Stress Analysis, *Journal of Applied Mechanics*, and the National Science Foundation.

Brother Williams is a registered professional engineer in California and has applied for registration in Utah. He has published numerous reports, articles, etc.

He is or has been a member of the board of directors of Space Ordnance Systems, Mathematical Sciences Corporation, Mathematical Sciences Northwest, Inc., and San Fernando Laboratories.

New Tau Beta Pi Council Includes Theta Taus

The Executive Council-elect of Tau Beta Pi, engineering honor society, includes two Theta Taus. A third Theta Tau, PROF. EDGAR C. CLARK, *Ohio State Hon. '25*, was president-elect of Tau Beta Pi, but died before he took office. (See "In Memoriam.")

HENRY R. CHOPE, *Ohio State Hon. '48*,

was elected vice president. He was a co-founder of Industrial Nucleonics Corporation, Columbus, Ohio, and serves the organization as executive vice president and director. His company was the first to specialize in the industrial application of atomic energy. Brother Chope is also vice president and director of AccuRay of

Canada, Ltd., and of AccuRay (U.K.) Ltd., London, England.

He attended the University of Louisville before World War II, then entered the Army Air Corps in 1942 and was trained in meteorology and radar at Cal Tech, Harvard, and MIT. In 1946 he left the Army as a first lieutenant and enrolled at Ohio State University. He graduated there in 1948, and the same year received an M.S. degree from Cal Tech for the work he did there during the war. He also received a master's degree from Harvard University in 1950. He was in charge of obtaining upper air radiological data for the original Bikini atom bomb tests.

Brother Chope is a registered professional engineer and a member of IEEE, ISA, AIAA, NSPE, AIIE, and AAAS. He is a member of Pi Kappa Alpha and Eta Kappa Nu, and has served on the technical committees of a number of national organizations including the U. S. Chamber of Commerce and the National Association of Manufacturers.



Henry R. Chope



David C. Minton, Jr.

DAVID C. MINTON, JR., Arizona '30, was elected a councillor of Tau Beta Pi. He is director of Battelle Memorial Institute in Columbus, Ohio.

Brother Minton received his degrees from the University of Arizona, which also conferred an honorary degree on him in 1948 and its Medal of Merit in 1960.

He was in the mining business in Arizona and Mexico for several years, and was a development engineer for the Titanium Alloy Manufacturing Company of Niagara Falls, New York. He taught metallurgy at the University of Arizona in 1937-38 and at the University of the Philippines in 1938-40.

Brother Minton joined Battelle as a research engineer in 1941, then spent three years during the war in Washington, D.C. working for the Office of Scientific Research and Development. He was awarded the Armed Forces Certificate of Appreciation there.

Brother Minton is a registered professional engineer and is a member of AIME, the American Society for Metals, Alpha Tau Omega, and numerous other organizations.

L. G. Feil is Promoted by the Corps of Engineers



Brother Feil is a registered professional engineer in Kansas and Missouri and a member of Tau Beta Pi. He is a Fellow of the ASCE and has served as president of the Kansas City Section and on a national committee. President Johnson appointed him as federal representative and chairman of the Big Blue River Compact Commission (Kansas and Nebraska). He is a member of the U. S. Committee on Irrigation and Drainage and the U. S. Committee for Large Dams.

In 1960 Brother Feil was a charter member and later served as president of the Mid-West Concrete Industry Board. This non-profit group has the sole purpose of improving the quality of concrete in the Kansas City area.

For his many civic and professional services, Brother Feil was named "Civil Servant of the Year" in Kansas City in 1955. His activities include Boy Scouts on regional and national levels and work in his church.

L. G. FEIL, Kansas '28, has been named chief of the Engineering Division in the Ohio River Division of the Corps of Engineers. He previously held the same position in the Corps of Engineers office in Kansas City. In his new position Brother Feil is responsible for supervising the policies and the engineering for all the Corps work in the Ohio River drainage basin. A major part of the work is modernization of the locks on the Ohio River. The present work load is over \$200 million in construction each year.

After graduation from the University of Kansas, Brother Feil spent five years with private architectural and engineering firms, then joined the Corps of Engineers at Kansas City. He worked on various projects, and entered the Kansas City District in 1941. He headed the Design Branch before becoming division chief in 1950.

Service to Zeta Chapter

For many years Brother Feil has served the Zeta of Theta Tau House Corporation. He became treasurer in 1939 and shortly thereafter the present Zeta house was purchased. He served in this capacity until 1960, when he became president of the House Corporation.

As he can well attest, Zeta has had its periods of difficult operations, when it seemed the mortgage payments could not be met. There have also been more favorable times, even though a fraternity chapter is seldom operating very far in the black. At his last meeting as president of the House Corporation in December 1965, the House Corporation and local alumni renewed efforts to build Zeta a new house. Brother Feil continues to serve as a member of the Zeta of Theta Tau House Corporation Board.

Top Navy Cartographer Warren C. Crump Retires

WARREN C. CRUMP, *George Washington* '40, the Navy's top cartographer and director of the Technical Production Department of the U. S. Naval Oceanographic Office, retired December 30, 1965 after more than 45 years of service with the Navy Department. He first joined the U. S. Navy Hydrographic Office at the age of 17 as a cartographic draftsman. He studied mechanical and civil engineering while employed, and received a B.S. degree in civil engineering (with distinction) from the George Washington University in 1940.

Brother Crump came into government service at a time when revolutionary new techniques were being developed. The semi-automatic Pantograver was one such instrument, and Brother Crump refined and further developed it. By 1929 he was chief of the Pantograver Section.

In 1940 he was appointed special assistant to the chief engineer of the Hydrographic Office. During World War II he participated in the management of vast combat and special purpose naval chart production programs for both Mediterranean and Pacific areas, for which he was officially commended.

Brother Crump was appointed deputy chief engineer of the Hydrographic Office in 1944. Cartography, hydrography, oceanography, and related fields came under his responsibility. He also did graduate study during this time and lectured at George Washington University. In 1946 he received the Navy Department Meritorious Civilian Service Award.



In 1960 he was appointed director of the Technical Production Department of the Hydrographic Office, which made him the Navy's chief cartographer. He served for some time as acting scientific and technical director of the Hydrographic Office, and represented the office at many international conferences.

Brother Crump is a member of the American Congress on Surveying and Mapping, the American Society of Photogrammetry, the American Association for the Advancement of Science, and various other technical associations and committees.

J. H. Douma Advances at Sunray DX Oil Company

JOHN H. DOUMA, *California (Berkeley)* '38, has been elected senior vice president of extractive operations for Sunray DX Oil Company, Tulsa, Oklahoma. He has been vice president of production of the company.

When he graduated in 1938, Brother Douma began work with the Barnsdall Oil

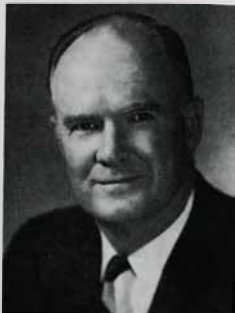
Company as a field engineer in California. He later came to Tulsa for the company and advanced to the position of general superintendent in 1948.

In 1950 Barnsdall merged into Sunray, and he became assistant general superintendent. He advanced through progressively more responsible positions which

took him to Los Angeles and Denver, Colorado. In 1963 he was named vice president of production for Sunray DX, and he assumed his present position in January 1966.

Brother Douma is vice president of Sun-tide Petroleum, Inc.; Sunray Nigeria, Inc.; Sunray Libya, Inc.; Sunray Iranian Oil Co., Inc.; Sunray Australian Oil Co., Inc.; Sunray Michigan Corporation; and Sunray Borneo Oil Company, Inc.; all Sunray DX subsidiaries.

He is a member of the Western Oil and Gas Association, the Rocky Mountain Oil & Gas Association, the Kansas-Oklahoma Division of Mid-Continent Oil & Gas Association, the Texas Mid-Continent Oil & Gas Association, the American Petroleum Institute, the Independent Petroleum Association of America, the AIMMPE, the Engineers Society of Tulsa, Inc., the Tulsa Area Safety Council, and the Tulsa Chamber of Commerce.



Zahour Honored by Illuminating Engineering Society

ROBERT L. ZAHOUR, Case '23, retired manager of lamp applications of the Westinghouse Lamp Division, has been honored with Emeritus status by the Illuminating Engineering Society. The announcement was made by A. D. HENCKLEY, Columbia '27, managing director of the society. Brother Zahour was given the Fellow grade in the IES several years ago.

In 1923 Brother Zahour joined Westinghouse after graduation from Case. He stayed with the company eleven years and made many applications of light for plant growth, television, blacklight, etc.

In 1930 he received his master's degree from Case. He joined the staff of the Connecticut Light and Power Company in 1935, and seven years later he was named chief engineer and executive assistant on the staff of the Newark, New Jersey Safety Council to supervise lighting in defense plants. Shortly afterward he became tech-



nical commercial manager of the wire division of the North American Philips Company, New York.

Brother Zahour is a registered professional engineer in New Jersey, New York, Pennsylvania, Ohio, and Connecticut. He is a member of the IEEE, IES, and Alpha Sigma Phi. He has served on commit-

tees of Edison Electric Institute and the International Committee on Illumination.

Brother Zahour rejoined the Westinghouse Lamp Division in 1948, where he furnished technical advice on special lighting applications, including television. He retired in 1962 and developed a private consulting engineering service.

Prof. Lear Returns to Alabama as Associate Dean

DR. W. E. LEAR, *Alabama '42*, has been appointed associate dean of the University of Alabama College of Engineering. He will take the post in June; he is now professor of electrical engineering at the University of Florida. The present dean of engineering at Alabama will retire in 1967, and Brother Lear will then become dean.

He attended the University of Cincinnati; then received his B.S.E.E. from Alabama in 1942. During World War II he served as a radar officer in the Electronic Field Service Group of the Naval Research Laboratories. He received a citation from the Navy for his work during the Bikini atomic bomb tests.

Brother Lear received his M.S. degree from Stanford in 1949 and his Ph.D. from Florida in 1953. His teaching experience has been at the University of Alabama, University of Tennessee, Stanford University, and the University of Florida.

His primary field of interest is electromagnetic theory with emphasis on microwaves. He has directed numerous research projects and authored several articles. He was a research participant at Oak Ridge National Laboratory for one year and a National Science Foundation research participant at Stanford University in 1961. He spent a year and a half at the National Science Foundation (1963-1964) as head of the Engineering Section and program director for engineering systems. He was NSF liaison representative to the Division of Engineering and Industrial Research of the National Research Council.



Brother Lear's industrial experience has been with Crosley Radio Corporation, North Electric Manufacturing Company, Sperry-Rand Corporation, and Radio Corporation of America. He has been a consultant to various industries and to some universities, and is currently a consultant to the National Science Foundation.

His memberships include Tau Beta Pi, Sigma Xi, Alpha Tau Omega, ASEE, and IEEE. He is a member of the Executive Council of Sigma Xi. Brother Lear is listed in *Who's Who in Engineering*, *American Men of Science*, and *Who's Who in the South and Southwest*.

In Memoriam

DR. THOMAS CALDWELL ADAMS, *Utah '22*, died November 8, 1965 in Salt Lake City. He was administrative officer of the Saltair Restoration Division of the Great Lake Yacht Club and had been working at Saltair at the time of his death. Brother Adams was a recognized authority on Great Salt Lake and had published several papers on the subject. He earned his Ph.D. at Cornell University and returned to the University of Utah as a professor of civil engineering. He was one of the founders of the Great Salt Lake Yacht Club, and was active in civic, county, and state affairs, including Kiwanis, the Utah Academy of Arts, Letters, and Sciences, and Boy Scouts. He was also active in the Church of Jesus Christ of Latter-day Saints, and was executive secretary of the Great Salt Lake Lands Association and president of the Utah Building and Construction Congress. During World War II he was appointed regional training director for the U.S. War Production Board. Brother Adams is survived by several cousins. (*Salt Lake Tribune*)

JAMES A. BARR, *Michigan Tech '07*, died December 15, 1965 in Mount Pleasant, Tennessee.

DR. THOMAS G. CHAPMAN, *Arizona Hon. '09*, died November 6, 1965 in Tucson. He was dean emeritus of the University of Arizona's College of Mines and director emeritus of the Arizona Bureau of Mines. Brother Chapman received his bachelor and doctoral degrees from the Massachusetts Institute of Technology, and taught there and at Michigan College of Mines. He received his master's degree at the University of Arizona and joined the faculty there in 1916. He became dean of the College of Mines in 1940 when it was established as a separate college. From 1937 to 1940 he was dean of the Graduate School. Brother Chapman was widely recognized as a metallurgist and earned many national distinctions for his services, especially for his process for the treatment and recovery of gold ores. He was a member of the AIME, Tau Beta Pi, Sigma Xi, and Phi Kappa Phi. Brother Chapman is survived by his wife, a son, a brother, and a sister. An Alumni Scholarship Fund has been established in his honor.



PROF. EDGAR C. CLARK, *Ohio State Hon. '25*, died February 11, 1966. He was professor emeritus of mechanical engineering at Ohio State University, and was president-elect of the Executive Council of Tau Beta Pi. Brother Clark received his first engineering degree from the University of Kansas and his M.S. at

the University of Illinois. He went to Ohio State in 1929. His research was in the field of stress analysis and he wrote a number of technical articles. During World War II Brother Clark was assistant director of the ESMWT program for the Ohio region. He was a member of Sigma Xi, Sigma Tau, ASEE, American Association of University Professors, and the Society for Experimental Stress Analysis, as well as Tau Beta Pi. He was a registered professional engineer in Ohio, and was listed in *American Men of Science* and *Who's Who in Engineering*. Brother Clark is survived by his wife, a son, four grandchildren, three sisters, and two brothers.

CECIL C. COVERT, *Ohio State '26*, a charter member of Sigma Chapter, died November 20, 1965 in Euclid, Ohio. He is survived by his wife and two sons.

LINDLEY B. CURTIS, *Minnesota '09*, died January 31, 1966. He was also a member of Sigma Alpha Epsilon. Brother Curtis is survived by his wife in St. Paul, Minnesota.

JEFFERSON CLARK DAVIS, *North Carolina State '28*, died October 30, 1965 in Tucson, Arizona. He was lecturer and administrative assistant in the Department of Physics at the University of Arizona. Brother Davis received his master's degree in physics from the University of Hawaii. He served in the Army at Fort Monmouth, New Jersey, and held the rank of lieutenant colonel in the reserve. He joined the University of Arizona faculty in 1946. Brother Davis was a member of Phi Kappa Phi, Tau Beta Pi, Blue Key, the American Association of Physics Teachers, and the Disabled Officers Association. He is survived by his wife and a son.

CHARLES M. HANNUM, *Cum '32*, died July 23, 1965. DR. ROBERT M. HEINON, *South Dakota Mines '30*, died June 29, 1965 in New Mexico.

EARL ROSS HOUNSHOLDER, *Missouri at Rolla '18*, died July 9, 1965 in the Veterans Administration Hospital, Prescott, Arizona. Brother Hounsholder was initiated by Delta Chapter, and after his transfer to MSM was instrumental in the establishment of Iota Chapter.

JOHN W. JORDAN, Jr., *Ohio State '30*, died March 12, 1966 in Pittsburgh, Pennsylvania. He was assistant to the administrative vice president of the U.S. Steel Corporation. Brother Jordan was a member of the Iron and Steel Institute, Masonic orders, and the Presbyterian Church. He is survived by his wife, a son, and his mother.

DONALD E. KOCH, *California (Berkeley) '29*, died May 22, 1965 in Bakersfield, California. He was a petroleum engineer. Brother Koch is survived by his wife, a son, and a daughter.

PAUL A. LAURENCE, *Minnesota '11*, died February 15, 1966 in Minneapolis. He was president of the Paul A. Laurence Construction Company. Brother Laurence was a member of the Professional Engineers Society, the Engineers Club, Masonic orders, the Minneapolis Athletic Club, Sigma Alpha Epsilon, and the Kable Klub. He is survived by his wife, two daughters, two grandchildren, two great-grandchildren, a sister, and two brothers.

ALBERT H. MANGELSDORF, *Kansas '12*, a charter member of Zeta Chapter, died March 7, 1966 in St. Louis, Missouri. He was chairman of the board of Ed. Mangelsdorf & Bro., Inc., a wholesale farm and lawn seed company. Brother Mangelsdorf served with the U.S. Army Artillery in France during World War I and was discharged as a first lieutenant. In 1919 he and his brother established their wholesale seed company. He served the firm as vice president and treasurer, later as president, and finally as chairman. He was past president and honorary life member of the Field Seed Institute of North America, an honorary life member of the American Seed Trade Association, and a member of the Agribusiness Club. His civic activities included the Grand Jurors Association and the St. Louis Traffic Club. He served on the board of the National Conference of Christians and Jews and was active in church societies. He was a member of Alpha Tau Omega and the American Legion. Brother Mangelsdorf is survived by two daughters, two sons, two sisters, a brother, 15 grandchildren, and two great-grandchildren.

WILLIAM H. MCGINNIS, *Minnesota '11*, died February 19, 1965 in Fullerton, California. He is survived by his wife.

PROF. WILLIAM C. MCNOWN, *Kansas Hon. '03*, died December 5, 1965 in Lawrence, Kansas. He was professor emeritus of civil engineering and was chairman of the Civil Engineering Department at Kansas University, 1934-35. Brother McNown was a past president of the Kansas Engineering Society and the Kansas Section of the ASCE and a member of Tau Beta Pi. His son is DR. JOHN S. MCNOWN, *Kansas Hon. '36*.

CHARLES K. MITCHELL, *Missouri at Rolla '44*, died December 10, 1965 in Houston, Texas. He was employed by Lockheed Missile and Space Company, Sunnyvale, California, and was on assignment in Houston. He was buried in Arlington National Cemetery with Marine Military Honors. Brother Mitchell is survived by his mother and a brother.

DAVID C. PORTERFIELD, *Carnegie Tech '23*, died September 14, 1965 in Barbados, British West Indies.

KARL A. SCHMIDT, *Missouri at Rolla '23*, died October 27, 1965 in Houston, Texas.

MELBOURNE F. SINNARD, *Kansas '22*, died January 8, 1966.

GEORGE D. SMITH, *California (Berkeley) '11*, a charter member of Epsilon Chapter, died in September 1965 in San Francisco. He was the former head of the Mark Hopkins and Fairmont Hotels in San Francisco, and brought about the famed Top of the Mark. He conceived the idea for a college level training school for hotel and restaurant executives, which is now institutionalized at San Francisco City College at the George D. Smith Hall. Brother Smith is survived by his wife and a son. (*California Monthly*)

LEW A. SUVERKROOP, *Michigan Tech '17*, died in October 1965 in Bakersfield, California.

JOSEPH A. THIEKA, *Columbia '27*, died recently. He was also a member of Tau Beta Pi and Sigma Xi.

HARLAN A. WALKER, *Columbia '16*, died February 16, 1966 in Salt Lake City. He was a long-time mining engineer and was first vice president of the Utah State Automobile Association. From 1939 until 1953 Brother Walker was assistant general manager of the Homestake Mining Company with business offices in San Francisco. He also worked as a mining engineer in Utah, Nevada, Colorado, Mexico, and Peru in earlier years. Brother Walker graduated in 1916 from the University of Utah, attended Columbia University, and received a mining engineering degree from the University of Utah in 1921. He was a member of the American Mining Congress, AIMME, the Mining and Metallurgical Society of America, Masonic orders, and Beta Theta Pi. He was active in Red Cross, United Fund, the Salt Lake Committee on Foreign Relations, the English Speaking Union, and the Newcomen Society of England. Brother Walker served overseas in World War I. He is survived by his wife, three daughters, nine grandchildren, and a brother. (*Salt Lake Tribune*)

ROLLAND H. WOODS, *Colorado Mines '24*, died July 28, 1965 in Albuquerque, New Mexico. He was an independent oil operator and rancher. After graduation Brother Woods was employed as district land man for Vacuum Oil Company in Midland, Texas. In the early thirties he resigned to become an independent operator. He had ranching interests near Socorro, New Mexico. Brother Woods was also a member of Sigma Alpha Epsilon. He is survived by his wife, two sons, and a sister. (*Mines Magazine*)

Alumni Notes

MINNESOTA

KENNETH A. JOHNSON, '21, is retired and living in Dunedin, Florida. He was formerly a mining engineer with U.S. Steel Corporation.

PERCY H. WILLIAMS, '22, is retired from the American Telephone & Telegraph Company. He lives in Bay Village, Ohio.

HENRY W. BARN, '33, is coordinator of research and development for the Chemical Division of Pittsburgh Plate Glass Company, Pittsburgh, Pennsylvania.

DR. MILES S. KERSTEN, Hon. '34, is professor of civil engineering at the University of Minnesota.

A GERALD BERGER, '44, is technical manager for general industrial tapes for Minnesota Mining & Manufacturing Company. He lives in White Bear Lake, Minnesota.

ROBERT K. HEULE, '45, is assistant division manager for Lakehead Pipe Line Company of Superior, Wisconsin. He lives in Duluth, Minnesota.

GORDON H. EGGER, '48, is an engineer for Ford Motor Company, Dearborn, Michigan. He lives in Livonia.

HERMAN E. SEIBERT, '48, is chief of materials and component engineering for Honeywell Inc. in St. Petersburg, Florida. His home is in Largo.

HARRY T. SWANSON, '48, is manager of Atlas White & Lumnite sales for Universal Atlas Cement, New York City. He lives in Norwalk, Connecticut.

CAPT. DEAN DYERSDALL, '58, is with the U.S. Air Force in Washington, D.C.

DANTE J. BOSSINI, JR., '59, is systems and procedures manager for Wernert Transportation, Minneapolis, Minnesota. He lives in St. Paul.

PHILIP W. SCHAEKER, '60, moved to Clearwater, Florida on March 1, 1966 to assume the responsibilities of Southeast regional manager for Fairchild Instrumentation, a division of Fairchild Camera and Instrument Corporation. This represents a multimillion dollar market and service for electronic test and measuring equipment. Brother Schaecker and his wife, Merri, were formerly in West Hollywood, California. They expect their first child in May.

LT. CARROLL HOKANSON, '62, has been sent to Viet Nam. His wife is living in Robbinsdale, Minnesota until he returns.

WILLIAM S. CARLSON, '63, is a systems engineer (public utilities) for IBM in Minneapolis.

RALPH S. TYLER, '63, was married in January to Cheryl A. Lee of Pengilly, Minnesota. Brother Tyler was promoted in March to senior personnel supervisor on the SST program at the Boeing Company, Seattle, Washington. He is presently recording secretary of the Pacific Northwest Alumni Association.

KIRK H. JOHNSON, '64, is an electrical project engineer for D.M. & I.R. Ry. Co., Duluth, Minnesota.

CHARLES R. OLESON, '64, is a test engineer for Pratt & Whitney Aircraft. His home is in Warehouse Point, Connecticut.

MICHIGAN TECH

N. F. KOEPEL, '18, is vice president of the Anaconda Company in New York City.

WILLIAM A. BECK, '22, is retired; he lives in Monterosa, Georgia. He was formerly with the U.S. Bureau of Mines, Knoxville, Tennessee.

LYLE W. SMITH, '24, is retired and living in Austin, Texas.

SHARON T. WALZ, '33, is employed by the Square D Company as regional manager is charge of all operations and marketing in the Southeast. He is located in Atlanta, Georgia.

C. C. HASCALL, JR., '37, is manager for process development for Ford Motor Company, Dearborn, Michigan. His home is in Grosse Ile.

SHELDON H. REYNOLDS, '37, is Southwest area manager for technical services for U.S. Steel Corporation. He headquarters in Houston, Texas.

NORMAN A. MOBERG, '39, is director of raw materials property for U.S. Steel Corporation, Pittsburgh, Pennsylvania.

EDWARD W. WITCOMB, '40, is assistant manager for the Chile Exploration Company, a subsidiary of the Anaconda Company. He is located in Chuquibambilla, Chile, the site of the largest copper producing mine in the world.

THOMAS E. BENEMER, '50, is a sales engineer for Johnson Service Company, Detroit, Michigan. He lives in Pleasant Ridge.

D. S. SKUPCA, '50, is now working as technical assistant to the general manager of Eagle-Picher Company at Miami, Oklahoma.

DANIEL M. URRICH, '52, is plant superintendent for Eveleth Taconite Company, Eveleth, Minnesota. His home is in Hibbing.

JAMES B. BAY, '54, is chairman of the mechanical engineering laboratory at the General Motors Institute, Flint, Michigan.

B

GEORGE J. SPERRY, '56, is control center director for the 910th Troop Carrier Group of the U.S. Air Force at the Youngstown Municipal Airport, Vienna, Ohio. He lives in Warren.

RICHARD H. SMARY, '60, is foundry superintendent for the Arnold Engineering Company, Marengo, Illinois.

I./LT. DAVID J. TRIMBERGER, '60, is an industrial hygiene engineer with the 809 Medical Group, U.S. Air Force. Since July 1, 1965 he has been stationed in Madrid, Spain for a three-year assignment. Brother Trimmerger's wife and three children are with him in Madrid.

LT. DENNIS L. MEYER, '62, is fuel and electric systems branch chief at the U.S. Army Ordnance Center and School, Aberdeen Proving Grounds, Maryland.

THOMAS R. IRWIN, '63, is working for his M.S.B.A. at Michigan Tech.

ROBERT A. STARR, '64, is a project engineer for Gannett Fleming Caddy & Carpenter, Harrisburg, Pennsylvania. His home is in Camp Hill.

COLORADO MINES

B. J. MECHIN, '19, is retired but does occasional consulting work. He lives in New York City.

THOMAS G. FOULKER, '22, is a retired metallurgical engineer; he resides in Bethlehem, Pennsylvania.

CYRIL L. FLEISCHMAN, '30, is in Lima, Peru.

RUBEN F. LEATHERWOOD, '33, is retired from the Corps of Engineers. His home is in Bethesda, Maryland.

CHARLES C. TOWLE, '34, recently moved from Santa Fe, New Mexico to Reno, Nevada. He is presently engaged as a consulting geologist and mining engineer.

KENNETH D. TRUE, '35, is president and owner of International True Products—TIPCO Inc., Ann Arbor, Michigan.

T THOMAS F. TUCHAN, '35, is general manager of the Organic Chemical Division of American Cyanamid Company. He recently moved to Rumson, New Jersey.

JACK D. POWERS, '39, is district overseer for the Watch Tower Bible & Tract Society in Montevideo, Uruguay.

COL. LOUIS DeGOES, '41, was honored in the Silver Anniversary All-American Awards of Sports Illustrated. The award was given for exceptional success in life in the 25 years since the men's senior collegiate football season of 1940. Brother DeGoes is currently chief of the Propulsion Directorate, Foreign Technology Division of the Air Force Systems Command.

DR. GEORGE A. KIEPICH, '42, is professor and

chairman of the Department of Engineering Geology at Cornell University.

D. L. CEDARBLADE, '44, is planning manager for Mobil Oil Australia in Melbourne, Victoria, Australia.

MILES T. RAIDER, JR., '48, is a geologist for Creole (Jersey Standard) in Caracas, Venezuela.

JAMES H. PITTINGER, '49, has been named president of Shell Pipe Line Corporation, Houston, Texas. He has served Shell in many positions, the last being as general manager of Shell's purchasing-stores department in the New York head office. Brother Pittinger has also held a six months Brookings Institute fellowship, which involves government work in Washington, D.C.

JOHN T. REAGAN, '53, has been elected assistant vice president of the Denver U.S. National Bank. He is a petroleum engineer in the oil and natural resources group. Brother Reagan is currently chairman of the Denver Petroleum Section of AIME.

ROBERT H. WATERMAN, JR., '58, is a member of the management consulting firm of McKinsey and Company in the San Francisco office.

R. M. SWERDSEGER, '59, has been promoted to chief engineer for the Colorado Mining Company, Ouray, Colorado.

GENE B. COLVARD, '64, is an underground engineer for Jones-Harrison Joint Venture, Georgetown, Colorado. He lives in Sterling.

CASE

ANDREW L. JAMES, '24, is retired; he lives in Clearwater, Florida.

WILLIAM P. VON REIHEN, '25, is an executive in the Housewares Division of General Electric Company, Bridgeport, Connecticut. His home is in Fairfield.

JOEL C. CARPENTER, '29, is manager of research for Oglebay Norton Company, Cleveland, Ohio. He lives in Chagrin Falls.

JAY S. HUDSON, '30, is director of employee relations for the Electric Storage Battery Company, Meadowbrook, Pennsylvania.

HARRY W. SMITH, JR., '30, is president of Harry W. Smith, Inc., which does technical information programs for client manufacturers. His business is in New York City; his home is Ilye, New York.

A. H. GLASENAFF, '32, is a staff engineer—engines for G. M. Truck & Coach, a division of General Motors Corporation. He is located in Pontiac, Michigan.

LOVELL SHOCKEY, '32, is a staff engineer for H. K. Ferguson Company, Cleveland, Ohio.

RICHARD A. ENGERHART, '38, is a staff engineer for the Martin Company, Baltimore, Maryland.



THE GEAR OF THETA TAU

JAMES R. JEROME, JR., '44, is chief engineer for Weatherhead Company, Cleveland, Ohio. His home is in Willoughby.

R. N. DEAN, '45, chairman of the board of the Empire Spring Division of Entec Inc., has moved to Pico Rivera, California, where he is handling West Coast operations.

ROBERT C. TUPA, '45, is new product manager for Energy Technology Inc., Cleveland, Ohio.

HERBERT F. HARRIS, '46, is head of the Fatigue Branch of NASA's Langley Research Center, Hampton, Virginia.

JAMES J. LEE, '46, is a civil engineer for the U.S. Air Force, Electronic Systems Division, at L. G. Hanscom Field. He lives in Acton, Massachusetts.

PAUL C. MENSTER, '48, is a principal of Paul C. Menster & Associates. He lives in Lyndhurst, Ohio.

JACK E. MAXWELL, '49, is vice president of Booz, Allen & Hamilton Inc., Detroit, Michigan. His home is in Birmingham.

WILLIAM M. NEWBOME, '50, is a sales engineer for Industrial-Technical Sales & Service, Inc., Mansfield, Ohio.

R. D. HALVERSTADT, '51, is vice president of Booz Allen Applied Research, New York City. His home is in New Canaan, Connecticut.

KELLY M. DYER, II, '52, is a sales engineer for Pittsburgh Plate Glass Company, Pittsburgh, Pennsylvania.

CARL A. LINDBLOM, '52, is product sales manager for the Trane Company in LaCrosse, Wisconsin.

NORMAN H. GABER, '57, is associate chief at Battelle Memorial Institute, Columbus, Ohio.

JOHN T. GERHAN, '59, is an aerospace engineer with TRW, Inc., Cleveland, Ohio. He lives in Cleveland Heights.

WILLIAM R. HOLLAND, '59, is a partner in the new law firm of Vale and Holland, Akron, Ohio.

DAVID BORRUM, '65, is a field engineer for the Squire D Company, Cleveland, Ohio.

MICHAEL CASAR, '65, is a student at Columbia University. He lives in Forest Hills, New York.

LY. WILLIAM T. JONES, JR., '65, is with the U.S. Air Force at L. G. Hanscom Field, Bedford, Massachusetts.

CALIFORNIA (BERKELEY)

THOMAS W. KOCH, '24, is retired; he lives in Reno, Nevada.

JAMES C. KIMBLE, '26, is president of State Exploration Company, Los Angeles, California. His residence is in San Marino.

E DR. RICHARD C. MELENZ, '36, is vice president for product development of Master Builders, a division of Martin-Marietta. He lives in Cleveland, Ohio.

KIRKWOOD BOURET, '40, is a managing partner of the management consulting firm of Glover Associates, Inc. He is manager of the San Francisco office and lives in Menlo Park, California.

MARC O. MILLER, '47, is a geologist-geophysicist for Argosy Oil Company, Bakersfield, California.

GEORGE W. METCALF, '48, deals in real estate and mortgages and is co-owner of Lifetime Savings and Loan of Van Nuys, California. His home is in Sepulveda.

D. B. NOLAN, '48, works in systems and procedures for North American Aviation in Downey, California. He lives in Torrance.

CORNELIUS K. HAM, '51, is resident manager for Wm. Ross Calson & Associates, Lima, Peru.

P. CLIFFORD PERCY, '52, is employed by Shell Oil Company in sales in the civil and highways field. He lives in Pittsburgh, Pennsylvania.

JAMES R. WEDDLE, '57, was promoted in April 1965 to associate engineer in the California Division of Oil & Gas. He moved from Bakersfield to Taft, California.

CAPT. JAMES J. MCKINSTRY, JR., '60, recently completed C-130 training and is now flying C-130s at Sewart AFB, Tennessee. He lives in Smyrna.

P. ANTHONY PRICE, '63, graduated from Harvard Business School with an M.B.A., and accepted a position with FMC Corporation in the Machinery Division's management group in San Jose, California. He lives in Palo Alto.

KANSAS

DONALD E. BONJOUR, '32, retired December 30 as chief of the Plant Branch in the Construction Division, Kansas City District, U.S. Army Corps of Engineers. He will now give full time to a partnership with his son, RONALD W. BONJOUR, Kansas '60, in a consultant firm specializing in civil engineering and land development. Brother Bonjour, who lives in Lenexa, Kansas, also is active in civic, educational, church, and humanitarian activities. (See the Fall 1965 GEAR)

R. A. RUSSELL, '37, is a partner in Black & Veach, Kansas City, Missouri. He lives in Prairie Village, Kansas.

FRANK C. BROOK, '40, is retired; he lives in Mountain Lakes, New Jersey.

RICHARD H. HARRIS, '51, suffered the death of his wife on February 16, 1966. He has three children, Rick, Cathy Ann, and Kevin. They live in Glen Burnie, Maryland.

WILLIAM H. STINSON, '52, is manager of the Fleet Sales Division of Cessna Aircraft Company, Wichita, Kansas. He invites any of the brothers to visit Cessna while in Wichita.

GENE L. ROGERS, '54, is nuclear power superintendent at the Pearl Harbor Naval Shipyard. He is employed by the U.S. Atomic Energy Commission. Brother Rogers moved to Honolulu, Hawaii in February.

CAPT. JOE H. ENGLE, '55, is one of 19 men recently selected to take part in the manned space flight program, bringing the total to 50. Brother Engle won his astronaut wings last June when he piloted the X-15 rocket craft to a height of more than 50 miles.

IRK H. BLUMBERG, '56, is an engineer for IBM. He lives in Hyde Park, New York.

C. RICHARD GILLESPIE, '58, is a graduate research assistant at Louisiana State University in Baton Rouge.

CAPT. ROBERT H. MCCAMISH, '58, is back in the States with the 6970 Support Group, Fort George G. Meade, Maryland.

RON KOMATZ, '61, was released from the Navy last April. He is now a marketing engineer with Motorola. With his wife and two children, Brother Komatz moved into a new home in Scottsdale, Arizona in February.

JAMES A. CLUTZ, '62, is a sales-systems representative for Eastman Kodak Company. He covers nine counties west and south of Cleveland for the newly-formed Business Systems Markets Division. Brother Clutz is the father of a daughter and lives in Fairview Park, Ohio.

PAUL R. ZAMAN, '62, is an assistant engineer with Burns & McDonnell Engineering Company, Kansas City, Missouri. He is presently working with the soil mechanics and foundation department. Brother Zaman is the father of a son, Mikael; he lives in Overland Park, Kansas.

COLUMBIA

DR. ELMER L. GADEN, JR., Honorary, is professor of chemical engineering at Columbia.

FELIX E. WORMSER, '18, is a consulting mining engineer. He lives in Greenwich, Connecticut.

CHARLES M. BRINCKENHOFF, '25, has been elected chairman of the board and chief executive officer of the Anaconda Company.

G HOWARD M. STROBEL, '37, is a technical staff assistant in electronics of the Naval Applied Science Laboratory, New York Naval Base, Brooklyn. He lives in New York City.

WILLIAM VERMEULEN, '41, has been named president of the Connecticut Society of Professional Engineers.

DR. GEORGE W. MICHALEC, '43, is associate professor of mechanical engineering at Stevens Institute of Technology. He lives in Pleasantville, New York.

IRVING R. HARRIS, '46, is vice president, Printing Divisions for McCall Corporation, New York City. His home is in North Plainfield, New Jersey.

JOSEPH L. DE COLLIS, '48, has been named director of marketing for the Pfizer Laboratories Division of Chas. Pfizer & Company, Inc. in New York City.

WILLIAM H. GLICK, '48, is general manager of the Inorganic Chemical Division of Wyandotte Chemicals Corporation, Wyandotte, Michigan. He lives in Grosse Ile.

D. JOHN GRASSO, '56, is a management consultant with Price Waterhouse & Company, Philadelphia, Pennsylvania. His home is in Swarthmore.

RUSSELL C. BACCAGLINI, '63, is a mechanical engineer for U.S. Rubber Company's Research Center in Wayne, New Jersey. He recently moved to Oakland, New Jersey.

WARREN P. HAWRYLKO, '63, is a member of the technical staff for Bell Telephone Labs. He lives in Elmhurst, New York.

GABRIEL A. RUDKA, '63, is a research engineer for United Aircraft Research Lab, East Hartford, Connecticut. He lives in Manchester.

ROBERT J. POWERS, '64, is a development engineer with E. I. du Pont de Nemours & Company, Wilmington, Delaware. His home is in River Edge, New Jersey.

JOHN D. SPEAR, '64, is an industrial engineer for Armstrong Cork Company, Macon, Georgia.

TORIAS A. GOTTMAN, '65, is a graduate student at Columbia University. He lives in Bronx, New York.

MISSOURI AT ROLLA

JAMES J. MURPHY, '35, has been elected executive vice president of the MSM Alumni Association. Brother Murphy is president of the Murphy Company, Mechanical Contractors and Engineers, Inc., Los Angeles, California. He lives in Frontenac in St. Louis County, Missouri, is married, and has five children. Brother Murphy is a member of numerous professional and social organizations. In 1957 he received the "Order of Merit" of the national Executive Council of Phi Kappa Theta fraternity.

COL. VERNON T. LORING, '42, is with the Corps of Engineers, U.S. Army, in Germany.

R. KENT COMANN, '43, is manufacturing manager of the Pabco Gypsum Division of Fibreboard Paper Products Corporation, San Francisco. His home is in Los Altos, California.

R. O. KASTEN, '43, has been promoted to manager of application engineering for Armo Steel Cor-

THE GEAR OF THETA TAU

poration. He will be in charge of new product planning and application engineering in Kansas City, Missouri. Brother Kasten was recently elected president of the MSM Alumni Association. He lives in Raytown, Missouri, and has a son and daughter.

J. A. SCHREINEMAN, '45, is a staff engineer for Shell Pipe Line Corporation, Houston, Texas.

WILLIAM W. COLLINS, '50, is assistant vice president of First National City Bank, New York City. His home is in Metuchen, New Jersey.

MAJOR JOHN M. DANIELS, JR., '55, was recently promoted to major and transferred to the 37th Engineer Group to become the operations officer. He is responsible for the operations of three battalions and the training of 2,000 personnel. Brother Daniels lives in Hanau, Germany with his wife and two children.

DR. JOHN B. MILLER, '55, is on leave from the University of Missouri at Columbia to serve with the General Electric Company in its large steam turbine-generator department in Schenectady, New York. He is living in Scotia, New York.

ROY T. NYMAN, '55, is a process engineer for General Electric, Ashland, Massachusetts. His home is in Brookline.

GARY JOYE, '60, is a systems analyst with the Monsanto Company's St. Louis general office. He lives in Webster Groves, Missouri.

WILLIAM E. HALLERBERG, '62, is a graduate student in metallurgy at Case Institute of Technology, Cleveland, Ohio.

RONALD S. ROBERTSON, '63, is an associate engineer for IBM, Endicott, New York. He lives in Vestal, New York.

JOHN V. ANDERLICH, '66, is a production engineer with Humble Oil & Refining Company, Houston, Texas.

JAMES BERTELMEYER, '66, is working for Mobay Chemical Company as a chemical salesman. He is located in Pittsburgh, Pennsylvania.

ILLINOIS

K HENRY F. IRVING, '28, is research director for the Chemical Machinery Division of Baker Perkins, Inc., Saginaw, Michigan.

BRUCE G. EATON, '30, is a senior advisory engineer for Westinghouse Electric Corporation, Baltimore, Maryland.

UTAH

LAWRENCE A. ANDERSON, '18, retired in November from Utah Power & Light Company after 47 years of service. At the time of his retirement he was statistical and research engineer.

NEWELL J. KUBBE, '23, has retired as buildings manager of the General Services Administration in Salt Lake City. He served with the government for 28 years, beginning in the post office engineering section of the Salt Lake Post Office. He plans to pursue his favorite avocations, travel and golf, during his retirement.

R. D. BRADFORD, '24, is president of American Smelting and Refining Company.

EUGENE H. MERRILL, '32, has resigned as deputy assistant secretary of the Army for installations. Prior to joining the Department of the Army, he served with the North Atlantic Treaty Organization in Paris for nearly eight years as administrator of NATO's military construction and procurement program and as chairman of two major committees of the North Atlantic Council. During his career he has also served with the War Production Board, the Defense Production Administration, and the Federal Communications Commission. After graduation Brother Merrill was employed by United States Smelting, Refining and Mining Company and later was named chief engineer with the Utah Public Service Commission.

JACK L. DAVIS, '60, was named assistant plant manager of the Morton Salt Company, Port Huron Plant, October 1, 1965. He was previously plant engineer. Brother Davis and his wife have a son and a daughter.

CHARLES D. GRIFFITHS, '61, is now plant engineer at the Port Huron Plant of Morton Salt Company, Division of Morton International Inc. He was formerly a production engineer at Hercules Powder Company at Salt Lake City, Utah. Brother Griffiths is the father of two children.

ALABAMA

STEPHEN D. MOSLEY, '22, lectured at the University of Alabama in March as part of the Distinguished Lecturer Series. His topic was "Development of the Warrior-Tombigbee River System." Brother Mosley is retired as president of the American Cast Iron Pipe Company, Birmingham. A charter member of Mu Chapter, he has received many honors for his civic, professional, and cultural activities.

JAMES H. WINGARD, '22, is retired; he lives in Bradenton, Florida.

J. HAROLD WITHERSPOON, '24, is chief engineer for the Central Foundry Company. He lives in Tuscaloosa, Alabama.

ERNEST L. RUM, '25, is now retired and living in Pebble Beach, California. He calls his home "Ruh Rendezvous."

SAM A. BRITTON, '26, is superintendent at U.S. Pipe & Foundry Company, Birmingham, Alabama. His home is in Russellville.

PAUL M. SPEAKE, '27, is a partner in the firm of Davis, Speake & Thrasher, Architects, in Birmingham, Alabama.

PROF. WILLARD F. GRAY, '34, is head of the Department of Electrical Engineering at the University of Alabama.

WALTER T. SMITH, '35, is with Freeport-Kaolin Company, New York City. His home is in New Haven, Connecticut.

JAMES WALKER, '35, is the sales manager of Deakins Dodge, Inc., Johnson City, Tennessee.

DR. JAKE T. NOLEN, '38, is production manager of E. I. du Pont, Wilmington, Delaware.

FRANK E. BUNCE, '41, is supervisor of stress analysis for Grumman Aircraft, Bethpage, New York. His residence is in Huntington, New York.

JAMES J. DWYER, '43, is an operations research analyst for the U.S. Army Strategy & Tactics Analysis Group, Bethesda, Maryland. He lives in Potomac.

EDWARD W. STARKEY, '43, is owner of Ed. Starkey & Associates, a manufacturers' agency in Jacksonville, Florida.

PROF. W. K. REY, '45, Grand Regent, is the "star" of a NASA film being made to show high school students the opportunities available in the engineering field. He is being filmed both in his research activities and in his everyday life.

DOUGLAS W. BOOTH, '47, has been named vice president for marketing by Duke Power Company in Charlotte, North Carolina. Duke Power is one of the nation's ten largest utility companies, serving over 800,000 customers.

JAMES H. MOORE, JR., '47, is a senior engineer for Alabama Power Company in Birmingham.

MARTIN W. BLACKMAN, JR., '49, has been awarded the Goddard Award of the American Institute of Aeronautics and Astronautics. The award is presented for a brilliant discovery or a series of outstanding contributions over a period of time and carries with it an honorarium of \$10,000 and a gold medal. Brother Blackman, chief of propulsion for United Aircraft Corporation, is currently at MIT on an Alfred P. Sloan Fellowship, which he will complete in June.

ROBERT H. POGUE, JR., '49, is president of General Steel Tank Company, Birmingham, Alabama.

WILLIAM C. STAPLETON, JR., '49, is professor of electrical engineering at the University of Alabama.

JOHN H. BRYER, '52, is a process development chemical engineer with Buckeye Cellulose Corporation, Memphis, Tennessee.

ROBERT S. KULE, '55, is an assistant project engineer with Pratt & Whitney Aircraft, East Hartford, Connecticut. He lives in Middletown.

DONALD T. COMER, '60, is compensation coordinator for the Boeing Company in Huntsville, Alabama.

MAX E. ROSENTHAL, '60, is a project engineer for NASA's Marshall Space Flight Center, Huntsville, Alabama.

L.T. (J.E.) RALPH C. NEELY, '61, a member of the U.S. Civil Engineer Corps, was recently awarded the Navy Unit Commendation Ribbon at Davisville Seabee Center for his participation in disaster recovery work after an earthquake and tidal wave struck Kodiak, Alaska in March 1964. Brother Neely is now serving as administrative officer on the staff of the commander of naval construction battalions of the U.S. Atlantic fleet.

MICHAEL K. BROWN, '63, is employed by E. I. du Pont. He lives in Hixson, Tennessee.

JAMES T. DIXON III, '63, married Miss Janice Wilson February 5, 1966 in Birmingham. They are living in Phoenix, Arizona.

WILLIAM E. ROBERTS, '63, is an engineer with General Electric in Huntsville, Alabama.

LEON M. VICK, JR., '63, is employed by Development Designers' Company, Inc. of Norristown, Pennsylvania. He is currently in Huntsville, Alabama.

2/LT. HARRY E. BAHR, '64, has graduated from pilot training at Craig AFB, Alabama.

WILLIAM M. LAMPKIN, '64, is a metallurgical engineer for the U.S. Bureau of Mines at the University of Alabama.

JOHN E. DANIEL, '65, is a student in the University of Alabama School of Law.

WILLIAM L. MARSHALL, JR., '65, is a junior electrical engineer for Southern Services, Inc. He lives in Fairfield, Alabama.

CARNEGIE TECH

H. P. HASSRACH, '25, is a senior metallurgist for Union Carbide. He lives in Greenwich, Connecticut.

LEWIS RICHARDS, '26, is retired; he lives in Dalton, Pennsylvania.

J. L. DAVIDSON, JR., '29, is manager of labor relations for American Bridge Division of U.S. Steel Corporation, Pittsburgh, Pennsylvania.

GEORGE M. WILE, '29, is senior vice president of Awkright Mutual Insurance Company, Boston, Massachusetts. He lives in Waban.

RICHARD G. CRUMLEY, '34, is a research chemist for Kendall Refining Company, Bradford, Pennsylvania.

ALBERT R. DERVAES, '36, is president of A. R. Dervaes Company, Inc., New Castle, Delaware. He lives in Wilmington.

JAMES O. DENNY, '43, is in sales for J. S. McCormick Company, Pittsburgh, Pennsylvania.

THE GEAR OF THETA TAU

GEORGE O. N. REED, '43, is project manager for Vibrofloatation Foundation Company, Pittsburgh, Pennsylvania.

SEYMOUR R. CORWIN, '48, is vice president of Pat Richards, Inc., New York City. His home is in White Plains, New York.

HOWARD P. MORRISON, '48, is vice president of Barnard and Burk of Ecuador, Inc. He is located in Quito, Ecuador.

WISCONSIN

WILLIAM A. HAMBLY, JR., '49, is a graduate student at the University of Minnesota.

I ROBERT W. WUTKE, '51, is chief engineer for production for the Department of Defense in Milwaukee. He lives in New Berlin, Wisconsin.

PHILLIP A. REED, '56, does management systems research for Lockheed-Georgia Company, Marietta, Georgia. His home is in Atlanta.

1/LT. JOHN R. DIBBOL, '63, is a student electronic warfare officer at Mather AFB, California.

MELBOURNE B. SIBBLES, '65, is a design engineer for Maryland Plastics, New York City. He lives in Forest Hills, New York.

IOWA

CARL BESSEMER, '27, is an urban engineer with the Iowa State Highway Commission, Ames.

HENRY J. KERE, '33, is a senior research chemist with the B. F. Goodrich Company, Brecksville, Ohio. He lives in Akron.

MARTIN W. STILLER, '40, is assistant to the vice president for operations of Gisholt Corporation, Madison, Wisconsin. His home is in Lake Mills.

L. W. PETERSON, '49, is a resident engineer for Black & Veatch, Kansas City, Missouri. He lives in Overland Park, Kansas.

JAMES L. RUGG, '49, is a construction engineer for the City of Des Moines, Iowa.

P. A. TEMPLE, '50, is vice president of product engineering for Home-O-Nize Company, Muscatine, Iowa.

ROBERT C. HOLLE, '51, is chief design engineer in the City Engineer's office, New Haven, Connecticut.

VERN E. HALVERSON, '52, is superintendent for S. J. Groves & Sons Construction, Springfield, Illinois.

RAYMOND M. FLANDERS, '53, is manager of value analysis for Collins Radio Company, Cedar Rapids, Iowa.

OLESIUK MEYER, '53, is an engineer for Kodak in Rochester, New York.

K. D. WILSON, '54, is vice president of Baker Manufacturing Company, Hartselle, Alabama. He lives in Decatur.

CHARLES H. BLUNT, '59, is a junior officer in the Western Pennsylvania National Bank, Pittsburgh. He lives in Allison Park.

ROBERT C. RICHARDSON, '64, is now in the Army. He was formerly a job engineer for Standard Oil of California, El Segundo, California.

JAMES A. HUNTER, '65, is a graduate student in mechanical engineering at the University of Iowa. He is living in Coralville.

GEORGE W. HEASLEY, '66, has been promoted to be industrial engineering manager of the Indiana District of United Parcel Service. He is located in Indianapolis, Indiana.

VIRGINIA

THOMAS M. LENVILLE, '26, has been nominated as president of the National Society of Professional Engineers for 1966-67. He is manager of research application at the General Electric Research and Development Center in Schenectady, New York, and will retire from that position in July after 40 years with General Electric. He has been active in IEEE, ASME, AAAS, and ASEE as well as NSPE.

ROBERT T. BROWNING, '29, has been elected chairman of the board of directors of Wallace & Tiernan, Inc., manufacturers of chemical, pharmaceuticals, and mechanical equipment in Belleville, New Jersey. He will continue as chief executive officer.

JOSEPH L. LAJOLLA, '35, is an insurance underwriter for the Home Life Insurance Company of New York in Virginia Beach, Virginia.

ROBERT E. BIDDINGER, '62, is a service foreman for Chesapeake and Potomac Telephone Company of Maryland. He is located in Sykesville, Maryland.

NORTH CAROLINA STATE

JOHN H. BONITZ, '20, is president of Bonitz Insulation Company in Greensboro, North Carolina.

RICHARD VON BIBERSTEIN, '21, is retired; he lives in Burgaw, North Carolina. Formerly he was division engineer with the North Carolina State Highway Commission in Wilmington.

ELMER R. COMMANDEER, '23, is division engineer for Eastern Shore Public Service Company of Virginia. He is located in Exmore, Virginia.

BONNIE F. NORRIS, JR., '23, is manager and co-owner of Norris Supply & Machine Company, Gastonia, North Carolina.

B. P. BARBER, '24, is chairman of the board of B. P. Barber & Associates, Inc. in Columbia, South Carolina.

CRAIG L. BARNHART, '24, is city manager of the City of Hickory, North Carolina.

WALTER N. HIFF, '24, is district engineer for Duke Power Company. He lives in Hickory, North Carolina.

W. S. MORRIS, '24, is president of East Texas Salt Water Disposal Company, Kilgore, Texas, located at the center of the largest oil field in the U.S.

JOSEPH C. RICHERT, JR., '24, is vice president of Carolina Power & Light Company, Raleigh, North Carolina.

ROBERT W. UNDERWOOD, '24, is retired; he lives in Durham, North Carolina.

WILLIAM H. FOX, '25, is construction superintendent for Boyd & Goforth Inc., general contractors of Charlotte, North Carolina. His home is in Fort Mill, South Carolina.

JUDSON L. ROBERTSON, '25, is retired and living in Rockville, Maryland. He was formerly sanitary engineer director of the U.S. Public Health Service.

ALEXANDER SMITH DAVIS, '26, is office manager for the J. M. Huber Corporation, Huber, Georgia. He lives in Macon.

T. C. DICKINSON, JR., '26, is chief statistician for the Newport News Shipbuilding & Dry Dock Company, Newport News, Virginia.

J. B. DOTTERER, '26, is manager for Elasco Overseas Corporation in Athens, Greece.

HENRY E. KENDALL, '26, is chairman of the Employment Security Commission of North Carolina. He is located in Raleigh.

ELMER O. MOODY, '26, is senior vice president of Peden Steel Company, Raleigh, North Carolina.

E. L. MOUNTCASTLE, '26, is self employed as a manufacturer's representative in Charlotte, North Carolina.

BOYD C. STEEN, SR., '26, is a sales engineer for the Metal Product Division of Armco Steel Corporation. He lives in Atlanta, Georgia.

MARK SUMNER, SR., '26, is postmaster of Asheville, North Carolina.

JOHN A. ANTHONY, JR., '27, is a mechanical engineer at the Norfolk Naval Shipyard, Portsmouth, Virginia. His home is in Norfolk.

FRED G. DAVIS, '28, has been named vice president and general manager of the Newport News Shipbuilding and Dry Dock Company. He was formerly general manager.

W. C. LEARY, '28, is supervisor of P & T meters for the Duke Power Company, Charlotte, North Carolina.

PERRY M. SMITH, '28, is retired and living in Rich-

mond, Virginia. He was formerly employed by Du Pont.

FRANK B. TURNER, '28, is state property officer for the State of North Carolina and is senior vice president of Planters National Bank & Trust Company, Manteo, North Carolina. His residence is in Raleigh.

THOMAS A. GRANT, '29, is vice president of Leggett Stores and is manager of Leggett's of Staunton, Virginia.

HENRY O. HAMBRICK, '29, is a sales engineer for General Electric Company, Hagerstown, Maryland.

P ARCHIE B. FREEMAN, '30, is regional program director of the Division of Environmental Engineering and Food Protection of the Public Health Service in Boston, Massachusetts. He lives in Wellesley Hills.

DANIEL E. JONES, '30, is an administrative officer for the Rural Electrification Administration, Washington, D.C. His home is in Falls Church, Virginia.

FRAZIER M. EDWARDS, '32, is district sales representative (consumer) for Texaco Inc. in Raleigh, North Carolina.

THOMAS L. HODGES, '32, is district manager for Chevron Asphalt Company (Standard Oil Company of California) in Mobile, Alabama.

LELAND G. ATKINSON, '33, is plant engineer for Westinghouse Electric Corporation in Beaver, Pennsylvania.

DANIEL M. HOUSE, '33, has been elected president of the Greater Louisville (Kentucky) Convention Bureau for 1966, and has been selected chairman of the Newcomer Welcome Breakfast Committee of the Louisville Chamber of Commerce for 1966. Brother House is president and owner of Planned Music of Kentucky, Inc., Louisville. He lives in Jeffersonville, Indiana.

JAKE A. ROYAL, '33, is a piping designer in the Engineering Department of Newport News Shipbuilding and Dry Dock Company.

JACK W. COFFEY, '34, is a partner in the Piedmont Lumber Dist., Lumberton, North Carolina.

S. ROBERT WATSON, JR., '36, is division engineer for Carolina Power & Light Company, Raleigh, North Carolina.

T. A. RIVENBARK, JR., '37, is a contract administrator for the Defense Contractor Administration Services District in Birmingham, Alabama.

GRADY J. BELL, JR., '39, is self employed in Cobb Island, Maryland.

KENNETH V. CHACE, '40, is president of Berkshire Hathaway Inc., New Bedford, Massachusetts. He lives in Marion, Massachusetts.

FRANK O. TRUSLOW, '40, is president of Fleming-Hester Electric Company, Raleigh, North Carolina.

THE GEAR OF THETA TAU

I. J. HETHERINGTON, '43, is a mechanical engineer for USIA, Washington, D.C. He lives in Bowie, Maryland.

E. MORRIS CHISHOLM, '44, is president of Haley, Chisholm & Morris, Inc., Contractors, in Charlottesville, Virginia. His home is at Earlysville, Virginia.

JAMES E. AIDKINS, '46, is a senior engineer with Western Electric Company, Inc., Winston-Salem, North Carolina.

E. G. BOWEN, '47, is an electrical specialist with E. I. du Pont in Martinsville, Virginia.

JOHN S. HOLLOWAY, '47, is a member of Holloway-Reeves, Architects, in Raleigh, North Carolina.

ROY YELVERTON, '47, is a development engineer for American Cyanamid, Pace, Florida. His home is in Gulf Breeze, Florida.

D. F. LEFFLER, '48, is a sales engineer for General Electric Company in Kansas City. His home is in Prairie Village, Kansas.

GEORGE B. WHITEFIELD, '48, is a project leader for data processing with Procter & Gamble, Cincinnati, Ohio.

CHARLES M. RICE, '49, is a research engineer for American Enka Corporation. He lives in Candler, North Carolina.

O. G. BARNES, JR., '50, is an aircraft development engineer specialist with Lockheed-Georgia Company, Marietta, Georgia. His home is in Woodstock.

AVERY C. BROCK, '50, is plant manager for Camen Hosiery Company, Burlington Industries, in Greensboro, North Carolina.

THOMAS Z. OSBORNE, '50, is assistant director of public works for the City of Greensboro, North Carolina.

DR. LAURENCE E. POTEAT, '50, is associate professor of metallurgical engineering at Clemson University, Clemson, South Carolina.

SCOTT F. STUBHAM, '50, is executive assistant to the vice president of Reynolds Metals Company, Richmond, Virginia.

GLENN W. PUTNAM, JR., '51, is a senior electrical engineer for Texas Eastman Company, a Division of Eastman Kodak. He is located in Longview, Texas.

JAMES P. RICKS, JR., '51, is president of Ricks Laundry & Cleaners Inc. in Edenton, North Carolina.

CHARLES T. BRADSHAW, '52, is a nuclear systems engineer for General Electric at Valley Forge, Pennsylvania. He lives in Malvern.

WILLIAM L. DAVIS, '52, is plant manager for Tanner of North Carolina in Rutherfordton, North Carolina.

GEORGE E. FREEMAN, '52, is executive vice president and treasurer for Wm. F. Freeman Incorporated; Architects, Engineers, Planners, in High Point, North Carolina.

FRANK E. PERKINS, JR., '52, is region sales manager for Boston Manufacturers Mutual Insurance Company, Charlotte, North Carolina.

JOHN W. SCHLIERF, '52, is director of cost improvement for the Elliott Company, a division of Carrier Corporation, in Jeannette, Pennsylvania.

MAJOR PAUL E. SMATHERS, '52, is in Goose Bay, Labrador with the Air Force.

P. J. BAUGH, '54, is president of Baugh Industries, Charlotte, North Carolina.

D. F. HERBERT, '54, is director of Community Services Council of Roanoke, Virginia.

J. M. ALLEN, JR., '55, is an industrial engineer with Schieffelin & Company, Apex, North Carolina. He lives in Raleigh.

HENRY O. FOSTER, '55, is a senior research engineer for E. I. du Pont, Wilmington, Delaware. He lives in Newark.

DAVID V. GURLEY, '56, is a senior engineer for Martin Marietta in Orlando, Florida.

KEITH E. VERRILL, '56, has completed a course in law from LaSalle Extension University of Chicago. He lives in Garden Grove, California.

WILLIAM E. BILLINGSLEY, '57, is a mechanical engineer with Seaboard Air Line Railroad Company, Richmond, Virginia.

JOHN Y. LOMAX, '57, is manager of thermoplastic products for Liquid Nitrogen Processing Corporation, Malvern, Pennsylvania. He lives in Wilmington, Delaware.

WALTER C. THOMAS, JR., '57, is chief industrial engineer for Hatteras Yacht Company, High Point, North Carolina.

JIMMEY T. DAUGHTERIDGE, '58, is assistant project engineer for Pratt & Whitney Aircraft, West Palm Beach, Florida. His home is in Riviera Beach.

JOHN D. CLARK, '59, is branch manager for Duke Power Company, Brevard, North Carolina.

ROBERT W. WATERS, '60, is a consultant with Ernst and Ernst, Baltimore, Maryland.

J. A. HACKNEY, III, '61, has been made executive vice president and general manager of Hackney and Sons, Inc. of Washington.

CAPT. WILLIAM R. SESSOMS, JR., '61, is presently attending the Air Force Institute of Technology at Wright-Patterson AFB, Ohio. He is working toward a master's degree in electrical engineering. Brother Sessoms lives in Dayton.

J. B. WHITE, JR., '61, is in Philadelphia in training for a position with Philadelphia Manufacturers Mutual Fire Insurance Company. After training he will go to Greensboro, North Carolina. Brother White's first child, a daughter, was born in December.

MICHAEL E. ADAMS, '65, is an engineering consultant in industrial sales for Humble Oil & Refining Company, Tampa, Florida.

Z/LT. RICHARD C. PANCHALL, JR., '65, is at the Air Force Institute of Technology at Wright-Patterson AFB, Ohio. He lives in Dayton.

OHIO STATE

C. H. ALTVATER, '29, is chief engineer of bridges for the State of Ohio Department of Highways. He lives in Worthington.

S GEN. CURTIS E. LEMAY, '29, received the Legion of Honor in the degree of commander from the Philippines November 29. The decoration, the highest given by the Philippines, is for "exceptionally meritorious and outstanding service."

ROBERT C. MUEK, '30, is superintendent of the electric test department for Cincinnati Gas & Electric, Cincinnati, Ohio.

DR. HAROLD A. BOLZ, HON., '33, is dean of engineering at Ohio State University, Columbus, Ohio.

F. W. WAGNER, '34, is general manager of planning and service for U.S. Steel Corporation, Pittsburgh, Pennsylvania.

EUGENE E. MCPHERSON, '37, is a mechanical engineer with the Systems Engineering Group at Wright-Patterson Air Force Base, Ohio. He is assigned to aeronautical systems division projects. Brother McPherson lives in Fairborn.

ROBERT G. DERRENBARGER, '39, has resigned as division manager for the Flexible Company, Plastics Division, and has accepted a position as chief engineer, plastics and shop manager for developmental plastics of DEK Manufacturing Company, a subsidiary of Crown Steel Products Corporation. Brother Derrenbarger's daughter Jane will receive her degree in medical technology this year, and his daughter Barbara will begin pre-medical work next year.

JAMES J. WHITSETT, '42, is managing director of the Anti-Friction Bearing Manufacturing Association, Inc., New York City. He lives in Greenwich, Connecticut.

LEWIS C. HULLINGER, '47, is chemical factory superintendent for Owens-Corning Fiberglass Corporation. He resides in Newark, Ohio.

WILBERT E. CHOFFE, '48, is president of Industrial Nucleonics Corporation, Columbus, Ohio.

ROBERT L. NOXON, '49, is an electronic engineer with the program review group at the U.S. Naval Avionics Facility, Indianapolis, Indiana.



TOM L. UNDERWOOD, '52, has announced the formation of Atkins-Mercer-Underwood Limited, a firm performing consulting services in the civil engineering field. The firm is located in Columbus, Ohio. Brother Underwood was formerly an associate with A. E. Stilson & Associates, Ltd. He is a registered professional engineer in Indiana, Kentucky, Ohio, and West Virginia. He has published articles in *Civil Engineering and Consulting Engineer*, and is a past president of the Franklin County Chapter of the Ohio Society of Professional Engineers, a member of the ASCE, NSPE, and the International Association for Bridge and Structural Engineering. Brother Underwood lives in Columbus with his wife and two children.

CHARLES A. KLIMKO, '54, is an electronics engineer with Comprehensive Designers Inc. He lives in Marietta, Georgia.

DON C. BARNETT, '57, is an engineer for Avvin Industries Inc., Columbus, Indiana.

CLIFFORD N. CLICK, '57, is a graduate student in bio-engineering at Clemson, South Carolina.

RALPH P. REDMANN, '58, is a consultant with Booz Allen & Hamilton, New York City. He lives in Seaford, Long Island, New York.

STEPHEN C. DEWESE, '59, is a field engineer for the Baker & Hickey Company, Columbus, Ohio.

WAYNE D. MILESTONE, '59, is working toward his Ph.D. in mechanical engineering at Ohio State University.

CHARLES W. CAUDY, '62, is an aerospace engineer at Wright-Patterson AFB, Ohio. His first child, John Charles, was born November 26, 1965. The family lives in Dayton.

THOMAS D. SINGER, '63, is a structural test engineer for the Boeing Company in Huntsville, Alabama.

DALE HOOVER, '64, is a process engineer for Owens Illinois, Inc., Muncie, Indiana.

CHEERLTON R. ANDERSON, JR., '65, is a chemical engineer for E. I. du Pont de Nemours & Co., Inc. in Florence, South Carolina.

THE GEAR OF THETA TAU

SYRACUSE

E. L. AUVER, '31, is a research engineer for General Electric Company, Evendale, Ohio. He lives in Cincinnati.

CAPE, PAUL H. LEE, USNR, '38, entered private consulting practice in 1964. His specialty is technical and management phases of radio and communications engineering. From 1962 to 1964 Brother Lee was a consulting engineer with Bouz-Allen Applied Research, Bethesda, Maryland. He has also been manager of research and development for communications in the Bureau of Ships, and has been with the U.S. Information Agency. He served on active duty in World War II, and was made a captain in the Naval Reserve in 1963. Brother Lee is a registered professional engineer in the District of Columbia, is a senior member of IEEE, and is a member of the American Society of Naval Engineers, the U.S. Naval Institute, and the Armed Forces Communications and Electronics Association. He is the author of numerous articles and is presently writing a book on vertical antennas. At Syracuse Brother Lee was elected to Tau Beta Pi, Sigma Xi, and Phi Kappa Phi. He now lives in Kensington, Maryland.

JOHN J. O'NEILL, '43, is plant manager for the Blackstone Corporation, Jamestown, New York. His home is in Lakewood, New York.

VERN C. BELL, '47, is sales manager for MOOG, East Aurora, New York.

T ALBERT M. CHANDMAH, '51, is co-author of *Frissoner's Dilemma*, a book which explores the nature of conflict. It was published by the University of Michigan Press. Brother Chandmah is a research scientist at the Mental Health Research Institute at the University of Michigan.

J. ROBERT DAY, JR., '53, is an engineer for the Partlow Corporation, New Hartford, New York. He lives in Whitesboro, New York.

RALPH C. BENT, '56, is a project engineer for customer facilities for Niagara Mohawk Power Corporation. His home is in Baldwinsville, New York.

VICTOR W. GOLINSCHMIDT, '57, is now an assistant professor at Purdue, teaching fluid mechanics and conducting research in turbulence. He is married and has a one-year-old daughter.

JAMES C. YARRINGTON, '57, is a mechanical engineer with IBM in Endicott, New York. He is the father of one daughter and two sons.

DONALD C. TAYLOR, '59, is a research engineer in electronics for Douglas Aircraft Company, Santa Monica, California. He lives in Huntington Beach.

2/LT. LOUIS A. CROSS, '65, is an electronics engineer with the U.S. Army Signal Corps in Bangkok, Thailand. He will be stationed there until June 1967.

ARKANSAS

WILLIAM M. GORDON, '31, is now an assistant professor at Southern Technical Institute, Marietta, Georgia. He retired from the Civil Engineering Corps, U.S. Navy, in the summer of 1962.

W. D. PATTON, '41, is a senior engineer for Westinghouse Electric Corporation, Beaver, Pennsylvania.

NORMAN L. SMITH, '41, is vice president of Nuclear Research Corporation, Southampton, Pennsylvania. He lives in Haddonfield, New Jersey.

Y B. W. HUNTON, '43, is a senior and design engineer for Reynolds Metal Company's plant at Bauxite, Arkansas. He is married and has two sons, 12 and 10 years old. The family lives in Benton.

CDR W. F. RUSSELL, '49, is the commanding officer of USN Mobile Construction Battalion FIVE now serving with the Third Marine Amphibious Force in South Viet Nam.

MAJOR H. T. HAMILTON, '50, is doing management analysis with the 319th Bomb Wing at Grand Forks AFB, North Dakota.

THOMAS J. EFFERSON, '58, is a distribution engineer for Southwestern Electric Power Company, Fayetteville, Arkansas.

PURPLE A. SELIG, '62, is a sales representative for American Cast Iron Pipe Company in the Dallas sales office. He covers the states of Arkansas, Texas, Louisiana, and New Mexico. Brother Selig, who lives in Mesquite, Texas, is married to the former Miss Peggy Jackson and has two daughters.

TERRY D. WILLIAMS, '64, is a manufacturing engineer with Rohr Corporation, Riverside, California.

RONALD E. EDDY, '65, is a systems engineer for IBM in Little Rock, Arkansas. He is working on the installation of four computers.

PURDUE

RALPH R. TRETOR, HON. '12, is retired from the presidency of the Perfect Circle Corporation. He lives in Hagerstown, Indiana.

WILLIS L. HUME, '26, is retired; he lives in Sanborn, Minnesota.

DANIEL B. MACLAREN, '30, is a planning engineer for Citizens Gas & Coke Utility, Indianapolis, Indiana.

CARL N. DEVANEY, '30, is personnel director for the Indiana State Highway Commission, Indianapolis. He retired as a colonel in the U.S. Army in 1960.

DONALD C. HOBBSMAN, '35, is vice president for operations of Continental Steel Corporation, Kokomo, Indiana.



COL. JOHN F. KUZNICKI, '41, is chief of the Program Review Branch, Review and Analysis Division of the Office of the Chief of Research and Development, Department of the Army, Washington, D.C. Brother Kuznicki lives in Arlington, is married, and has two sons and one daughter.

K. D. SWANDER, '42, is manager of transportation research for Custin Bacon Manufacturing Company, Kansas City, Missouri. He lives in Prairie Village, Kansas.

MAURICE R. HALASY, '55, is a graduate instructor in computer science at Purdue University.

EDWARD H. BEAUDOIN, '56, is president of Besford Plumbing and Heating Company, Inc., Besford, New York.

LT. JAMES I. MARBONE, '61, was promoted to his present rank on March 1, 1965 and is now serving at the U.S. Naval Examining Center, Great Lakes, Illinois. He and his wife announce the birth of their son James Diosi on August 27, 1965. The family lives in Glenview, Illinois.

RICHARD BERGMAN, '63, is doing control systems engineering on jet engines for General Electric, Evendale, Ohio. He lives in Cincinnati.

JOHN R. CARLSON, '63, is an engineer/test director for Douglas Aircraft, Santa Monica, California.

LARRY CRACRAFT, '64, is a semiconductor parts specialist for AC Electronics, a division of General Motors, in Milwaukee, Wisconsin. He lives in Greendale.

STEVE M. McLARY, '64, is a project engineer for Owens-Illinois, Toledo, Ohio.

ARIZONA

A. JOSEPH YAGGER, '41, is a consultant in Mexico City.

X MORTON E. PRATT, '42, has been transferred from manager of the Lucky Mc Mine, Riverton, Wyoming, to manager of Cedar City operations, Utah Construction and Mining Company. The move takes him from uranium back to iron mining and processing.

DAN E. LEWIS, '48, is a geologist for A. Soriano y Cia, Manila, Philippines.

JACK H. LUCAS, '51, is now manager of mining in charge of all open pit mining operations for Kaiser Cement & Gypsum Corporation, whose head office is at Permanente, California. He was formerly open pit superintendent in charge of a 30,000 ton open pit operation for Cyprus Mines Corporation on the Island of Cyprus in the Mediterranean Sea. Brother Lucas now lives in Saratoga, California.

WILLIAM A. ZACHRY, '52, is chief engineer for Morrison Knudsen, Perth, Western Australia.

R. C. TORGERSEN, '53, is a product design engineer for General Electric Company, Syracuse, New York.

STUART A. ENFIELD, '56, is a biomedical engineer for the Kendall Company, Barrington, Illinois.

EDWARD WESTALL, '60, is currently project engineer for Peter Kiewit Sons' Company on the Bakersfield Freeway.

JOHN J. KAUE, '64, is working as a logging engineer for Schlumberger Well Services Corporation. He is living in Cuthbert, Montana.

MONTANA MINES

CLARENCE A. WENDEL, '34, is regional minerals attaché and science officer at the American Embassy in Ankara, Turkey.



LAURENCE T. ECK, '40, is a rocket station specialist of the AEC/NASA Nuclear Rocket Development Station at Jackass Flats, Nevada. He lives in Henderson, Nevada.

JOSEPH W. PICKARD, '41, is president of Ingersoll-Rand Philippines Inc. He is located in Manila.

ARTHUR E. MORRIS, '56, is assistant professor of metallurgical engineering at the University of Missouri at Rolla.

DAVID S. JOHNSON, '58, is assistant road design engineer for the Montana State Highway Commission in Helena.

JOHN G. WILLIAMS, '62, is a sales engineer for Lane-Wells (Canada) Ltd. in Calgary, Alberta.

JAMES T. CONWAY, '64, is a metallurgical engineer for Value Engineering Company, Alexandria, Virginia.

SOUTH DAKOTA MINES

ROBERT O. WINKLER, '43, is assistant project engineer at the Tarapur Atomic Power Plant, Bombay, India. He is employed by Bechtel India Limited.

EARL W. McCLEERY, '51, is a senior engineer with Westinghouse Electric Corporation's Portable Appliance Division in Mansfield, Ohio.

GROVE A. RATHERUM, JR., '52, is an industrial engineer for United States Steel Corporation, Pittsburgh, Pennsylvania.



DR. MAURICE FUERSTENAU, '55, of the Department of Metallurgical Engineering at Colorado School of Mines, has been awarded a \$36,000 grant from the National Science Foundation to expand his research on "Flotation Processes—Absorption of Colloidal Precipitates."

THE GEAR OF THETA TAU

DUANE B. SKOGEN, '56, was recently promoted from process engineer to operations superintendent at the Billings Refinery of Continental Oil Company.

FRANK P. TAGLIAMONTE, '57, is resident geologist for exploration for Keitt Addition Mines Ltd., Noranda, Quebec.

W. D. BARNUM, '60, became the assistant city engineer of Muscatine, Iowa last November. Previously he was with the Iowa Highway Commission. Brother Barnum became a registered professional engineer last spring.

DOUGLAS E. ALDRICH, '62, recently finished his Army tour with the Chemical Corps and returned to the computer section of Process Engineering and Evaluation for Dow Corning Corporation, Midland, Michigan. He lives in Mount Pleasant.

CHARLES T. SCHMIDT, '63, is a management trainee with Northwest Bell Telephone Company. He lives in Minneapolis, Minnesota.

GEORGE WASHINGTON

BENJAMIN C. CRUCKSHANKS, Hon., '20, is professor emeritus of mechanical engineering at the George Washington University.

WILLIAM J. ELLENBERGER, '30, is supervisory construction management engineer in the Office of the Deputy Chief of Staff, Logistics, Department of the Army, Washington, D.C. He recently wrote a review of the book, *The Railway Revolution*, by L. T. C. Holt.

CAPT. JOHN R. BRAUER, USNR, '32, is a contract officer at the United Nations in New York City. He lives in Larchmont, New York.

H. VILPEAU DARLING, '33, has been in Costa Rica as project director for a study and report on integrated transportation for the five Central American countries. He is senior vice president of Transportation Consultants, Inc., Washington, D.C.

FB

FRANCIS M. HOFFMEIN, '33, is deputy director of the Chemical Division, BISA, U.S. Department of Commerce, Washington, D.C.

JOHN E. PARSONS, '38, is a staff engineer with the C & P Telephone Company, Washington, D.C.

EDWARD A. BAKER, '39, is owner of E. A. Baker Co., Inc., Takoma Park, Maryland. His home is in Rockville.

J. HAROLD LICK, '40, is a supervisory electrical engineer for the Bureau of Ships of the Navy Department, Washington, D.C.

MATTHEW S. POLK, '48, is section supervisor for Philco Corporation, Willow Grove, Pennsylvania. He lives in Springfield, Pennsylvania.

EDWARD EGLOFF, '50, is now serving as chairman of the Los Angeles Chapter of the American Society for Metals; it is the third largest chapter in the U.S. and Canada. Brother Egloff is executive vice president of Egloff & Graper Inc., heat processing specialists, and president of Furnace Services Inc. He lives in Arcadia, California.

RICHARD F. JULIUS, '52, is president of SJ Industries, Alexandria, Virginia. He lives in Silver Spring, Maryland.

JOHN E. DODGE, '54, is a senior engineer for Jansky & Bailey Research and Engineering Division of Atlantic Research Corporation, Alexandria, Virginia. His home is in Annandale.

CHARLES M. HUNTER IV, '58, is spacecraft manager and project coordinator, Tirox Operational System, at the NASA/Goddard Space Flight Center, Greenbelt, Maryland. He lives in Kensington.

JOHN R. MANNING, '58, is vice president of the Engineer Alumni Association of the George Washington University.

KITT E. GILLELLAND, '61, is an electronic engineer at the National Bureau of Standards, Washington, D.C. He lives in Beltsville, Maryland.

ELIOT D. COHEN, '63, is an electronic engineer at the U.S. Naval Research Laboratory, Washington, D.C. His home is in Silver Spring, Maryland.

PAUL FLEMING, '64, is an electronic engineer with Cooke Engineering Company, Alexandria, Virginia. He lives in New London, Connecticut.

GORDON E. DAVIDSON, '65, is a reliability engineer doing design analysis on the Sprint anti-missile missile at Martin Company, Orlando, Florida.

LOUISVILLE

J. F. CONNERTON, '43, is a project engineer for Processes Research Inc., Cincinnati, Ohio.

ROBERT C. STOCKLER, '48, is executive vice president of the Stockler Optical Co., Inc. in Louisville.

CLARENCE S. ROEBIG, Jr., '52, is a specification engineer for the Metropolitan Sewer District in Louisville.

ΔB

L. SEELBACH KRAFT, '53, is a senior development engineer for the Goodyear Tire & Rubber Company, Akron, Ohio. He lives in Stow, Ohio.

CLIFF NEELY, '53, is assistant editor of *Chemical & Engineering News*. He is located in Walldorf, West Germany.

JOHN A. NIERAUER, '61, is an engineer with RCA in Lancaster, Pennsylvania.

WILLIAM T. McDONALD, '63, is a graduate student in chemical engineering at Louisville.

WAYNE STATE

DR. HAROLD G. DONNELLY, '36, is head of the Departments of Chemical Engineering and Metallurgical Engineering at Wayne State. He lives in Dearborn, Michigan.

CHESTER J. SELDEN, '53, is manager of the Chemical Division of Kerr Manufacturing Company, a division of Rittler-Pfandler, in Detroit. His home is in Dearborn Heights.

E B GEORGE E. MAULE, '58, is turn foreman, 10 inch and 12 inch bar mills, for Republic Steel Corporation, Cleveland, Ohio. He graduated from Tri-State College in Angola, Indiana, *cum laude*, in August 1965.

ALEXANDER KARGIS, '59, is a product engineer for Wolverine Tube, Allen Park, Michigan. He lives in Detroit.

HARLAN F. WORDEN, '59, is a design engineer for Ford Motor Company, Allen Park, Michigan. His home is in Huntington Woods.

JOSEPH A. BOELTER, '65, is a graduate student and part time laboratory technician for Wolverine Tube, Allen Park, Michigan.

DETROIT

PROF. CLEMENT J. FREUND, '10, former dean of engineering, is now a consultant to the Southwest State College of Minnesota. He will aid in the planning and organization of programs and facilities for technology and engineering.

JOHN H. COLEMAN, '64, is a chemical engineer for Atomic Power Development Associates in Detroit. He lives in Lincoln Park, Michigan.

PHILIP A. FALCONE, '64, is a graduate student at MIT, Cambridge, Massachusetts.

PAUL D. SHARON, '64, is supervisor of sewage treatment for the City of Rochester, New York. He is engaged to be married to Miss Joan Smith in July 1966. Brother Sharon is features editor of the local Junior Chamber of Commerce newspaper.

FREDERICK H. DOWNS, '65, is a highway engineer for the U.S. Bureau of Public Roads, Boston, Massachusetts.

I B JOSEPH R. MARINO, '65, is an engineer for Humble Oil & Refining Company, Linden, New Jersey. He lives in Fords, New Jersey.

DONALD R. MORGAN, '65, is employed as product design engineer with Ford Motor Company, Dearborn, Michigan. He is working on a master's degree in industrial engineering at the University of Michigan at night. Brother Morgan lives in Warren.

JAMES H. SWELGIN, '65, is on temporary assignment for General Electric in Syracuse on a manufacturing training program. On February 12, 1966 he was married to Linda Van Auker of Syracuse.

THOMAS C. WERNER, '65, is a junior engineer for New York State. He lives in Cherketowaga, New York.

MISSISSIPPI STATE

GEORGE R. LIGHTSEY, '65, is a graduate student in chemical engineering at Louisiana State University, Baton Rouge.

K B

CONVENTION SOUVENIRS, THETA TAU MATCHES AND PENS AVAILABLE

If you missed the last Theta Tau Convention, you can still obtain one of the Sixtieth Anniversary souvenir glass trays provided each member attending the Convention Banquet—a lasting memento of a historic Theta Tau occasion. This is a fine desk accessory featuring the Fraternity coat of arms in gold with appropriate inscription—ideal as an ash tray or for clips, stamps, etc. It also makes a nice remembrance for a Theta Tau brother. Also available postpaid are special Theta Tau book matches and gold-colored ball point pens appropriately imprinted.

Sixtieth Anniversary souvenir tray	\$1.00
Theta Tau matches (50 books/box),	
1 to 5 boxes	80 each
6 or more boxes	75 each
Theta Tau ball point pen	40

Payment should accompany order sent to the Theta Tau Central Office, 13 Soma Lane, St. Louis, Missouri 63141.



Contributors to Theta Tau Progress

Theta Tau acknowledges with gratitude the gifts received from the following:

FOUNDERS' MEMORIAL FUND DONORS

James B. Bay, Beta '34
William August Beck, Beta '22
Frank E. Bunce, Mu '41
John B. de Hamel, Jr., Delta '45
Armin F. Eck, Iota '41
L. J. Haga, Beta '25
William L. Hallberg, Iota '62
Mrs. Robert C. Mayer
As a memorial honoring her husband,
Robert C. Mayer, Lambda '43
Hilde Schrader Niles (Mrs. Thomas H.)
As a memorial honoring her brother,
Founder Erich J. Schrader
Charles T. Schmidt, Omega '63
Walter Thomas Smith, Mu '35
Charles E. Epsilon Beta '53, and Sandra Wales
Walter Hall Wheeler, Alpha '06

UNRESTRICTED GIFT DONORS

F. H. Allison, Jr., Nu '23
Raymond Q. Armington, Sigma '28
Edward A. Baker, Gamma Beta '39
T. L. Beeler, Upsilon '53
Vern C. Bell, Tau '47
Charles N. Bellin, Gamma '34
Richard Bergman, Phi '63
Lloyd V. Berkner, Alpha '27
John H. Beyer, Mu '52
Charles H. Blunt, Omicron '59
David Boehm, Delta '65
Harold A. Bolz, Sigma '33
John B. Brasel, Gamma Beta '32
Thomas F. Brastow, Nu '27
Michael Carsat, Delta '65
John B. Carlson, Phi '63
Arthur F. Cervenka, Theta '41
Wilbert E. Chope, Sigma '48
Elbet D. Cohen, Gamma Beta '63
William W. Collins, Iota '50
Donald T. Comer, Mu '60
Francis W. Cook, Nu '26
G. F. Coope, Theta '14
Jack W. Cottrell, Tau '41
Larry Cracraft, Phi '64
Harold E. Crampton, Tau '35
Douglas A. Craven, Rho '43
W. E. Crockett, Iota '41
H. O. Cunningham, Sigma '30
John Edgar Daniel, Mu '65
J. L. Davidson, Jr., Nu '29
James O'Hara Denny, Nu '43
Albert R. Dervaes, Nu '36
Carl N. DeVaney, Phi '30
John R. Donnell, Delta '34
Harold George Donnelly, Epsilon Beta '36
George A. DuToit, Jr., Alpha '10
Dean Diversdall, Alpha '58
Bruce G. Eaton, Kappa '30

Gordon H. Eggers, Alpha '48
William J. Ellenberger, Gamma Beta '30
Richard C. Erdman, Sigma '59
Arthur H. Falter, Sigma '29
As a memorial honoring
John W. Jordan, Jr., Sigma '30
Raymond M. Flanders, Omicron '53
Cyril L. Fleishman, Gamma '30
Ernest C. Gaston, Mu '23
John O. Geishuhler, Delta '35
John T. Gerhan, Delta '59
Michael A. Gibbs, Mu '57
Kitt E. Gilliland, Gamma Beta '61
William H. Glick, Theta '48
William Madison Gordon, Upsilon '31
Thomas N. Griggs, Nu '38
Robert D. Halverstadt, Delta '51
Raymond E. Hanning, Phi '33
Henry Z. Hardaway, Omicron '40
Herbert F. Hardrath, Delta '46
Jerome R. Harris, Theta '46
Walter R. Hoffman, Delta '18
Dale Hoover, Sigma '64
Daniel M. House, Rho '33
Jay S. Hudson, Delta '30
Willis L. Hume, Phi '26
Arthur L. Hunt, Omega '62
Henry F. Irving, Kappa '28
Andrew L. James, Delta '24
Albert L. Johnson, Beta '33
Carl T. Jones, Mu '29
Richard F. Julius, Gamma Beta '52
Truman L. King, Jr., Rho '61
O. Z. Klopsch, Delta '22
N. F. Koepel, Beta '18
L. Seelbach Kraft, Delta Beta '53
Robert S. Kulp, Mu '55
William M. Lampkin, Mu '64
Vincent D. Lauria, Mu '47
Joseph H. Leuner, Theta '42
John H. Light, Mu '38
J. Harold Link, Gamma Beta '40
Henry S. Loeffler, Alpha '15
William T. McDonald, Delta Beta '62
Stanley H. MacArthur, Beta '23
W. Stanley Machen, Gamma Beta '44
Benjamin C. Marcin, Nu '43
Joseph R. Marino, Iota Beta '65
R. J. Mechin, Gamma '19
Paul Menster, Delta '48
George W. Michales, Theta '43
Richard C. Mielenz, Epsilon '36
Ralph M. Moon, Beta '15
James H. Moore, Jr., Mu '47
Donald R. Morgan, Iota Beta '65
Arthur E. Morris, Psi '56
Howard F. Morrison, Nu '48
Cliff Neely, Delta Beta '53
William F. Newdome, Delta '50
Hilde Schrader Niles (Mrs. Thomas H.)
Charles R. Oleson, Alpha '64
John E. Parsons, Gamma Beta '38
William D. Patton, Upsilon '41
Paul C. Perry, III, Epsilon '53
Theodore E. Peter, Upsilon '29

Joseph W. Pickard, Psi '41
 Robert H. Pogue, Jr., Mu '49
 Matthew S. Polk, Gamma Beta '47
 Miles T. Rader, Jr., Gamma '48
 Joseph B. Ragan, Gamma Beta '36
 H. P. Rassbach, Nu '35
 Grove A. Rathbun, Jr., Omega '32
 Lewis Richards, Nu '26
 Ronald S. Robertson, Iota '63
 Edgar R. Robinson, Sigma '29
 Max E. Rosenthal, Mu '60
 R. A. Russell, Zeta '37
 J. A. Schreiman, Iota '45
 Herman E. Seibert, Alpha '48
 Lovell Shockey, Delta '32
 Steven L. Shrier, Theta '64
 Fred R. Smith, Omicron '26
 Russell L. Sorenson, Alpha '27
 Paul Meredith Speake, Mu '27
 George John Sperry, Beta '56
 William C. Stapleton, Jr., Mu '49

Robert C. Stockler, Delta Beta '48
 Howard M. Strobel, Theta '37
 Frank P. Tagliamonte, Omega '37
 Ralph R. Teeter, Phi '12
 P. A. Temple, Omicron '30
 Burton W. Thompson, Alpha '35
 Jay N. Thorpe, Lambda '37
 Thomas P. Turchan, Gamma '35
 William Vermeulen, Theta '40
 William P. Von Behren, Delta '25
 Frederick W. Wagner, Sigma '34
 James L. Walmsmith, Phi '53
 Sharon T. Walz, Beta '33
 Stanley D. Webber, Theta '57
 Clarence A. Wendel, Psi '34
 Joseph R. White, Jr., Rho '61
 Percy H. Williams, Alpha '24
 James H. Wingard, Mu '22
 Edward W. Witcomb, Beta '40
 J. Harold Witherspoon, Mu '24
 Felix Edgar Wormser, Theta '16

25 and 50 Years Ago in Theta Tau

25 YEARS AGO

A. D. Hinckley wrote on "What Can a Chapter Do to Make Its Existence Beneficial to the Campus?"

The editorial considered "The Engineer and the Draft."

Zeta Chapter was struggling to finance its new house.

Theta Chapter had a new flag, eight by ten feet.

The Alumni Associations reported the loss of many members to the armed services.

(From the Spring 1941 GEAR)

50 YEARS AGO

Alpha Chapter realized a dream by moving into its first house, with five of the brothers living there.

Beta Chapter reported that some of the members came back from Christmas vacation dancing the "Charlie Chaplin."

Iota Chapter was installed at Missouri School of Mines, where the student body numbered 250.

(From the 1916 GEAR)

IMPORTANT NOTICE TO ALUMNI

Beginning with the Fall 1963 issue of THE GEAR, we modified our policy for those alumni who move without notifying THE GEAR office of their new mailing addresses. If your GEAR is returned to us with a new address written on it, we will automatically place you on the mailing list for the next issue. If a returned GEAR has no forwarding address on it, we will seek your current address by first class letter. Because of the high postal rates, we will not remail the current issue to you as in the past. In all cases we will attempt to keep you on the mailing list.



Chapter News

The Corresponding Secretaries were asked to write about Alumni Relations in their letters to THE GEAR. This topic is the seventh in a series of chapter letters carrying themes selected by the Editor.

The responsibility for encouraging and maintaining contact with alumni rests with the chapter, if only because the alumni are scattered in many locations and the chapter is "back at the old school." As one chapter points out, this is a two-way street, and alumni have to respond and show an interest in their chapters to bring about any meaningful relationships.

It is obvious from reading the letters that alumni near the chapters can participate actively in chapter events. But those chapters which sponsor student-alumni events seem to do the best job of keeping in contact with their brothers who live further away, too.

Hopefully the chapters which need to improve their programs of alumni relations will benefit from reading "how other chapters do it." And how long has it been since you last visited or sent a greeting to your chapter, Mr. Alumnus?—WEF

ALPHA CHAPTER



Here at Alpha Chapter, a number of different methods are used as a means of keeping in touch with our alumni in the area. Last year Founders' Day was celebrated on Thursday, October 14 at the Normandy Motor Hotel in

downtown Minneapolis. Thirty-five actives and 40 alumni attended the affair, which consisted of a dinner and a speech by John Swanberg of the Minnesota Highway Department. His speech dealt with highways and freeway construction in the State of Minnesota.

Many of the alumni also attend the spring formal. This is usually a Saturday evening of dining and dancing followed by a Sunday afternoon picnic.

In addition to these two events, there are two alumni organizations, Theta Tau Association and Twin City Alumni Association, which afford us other means of keeping in contact with our alumni. The Twin City Alumni Association gives us a hand financially, and their present project is reupholstering our furniture in the lounge of the chapter house.

TIM GELLS
Corresponding Secretary

BETA CHAPTER



The Rhombohedron is our Chapter newsletter. At present it is published once a year and is sent to all of our alumni. We hope that in the near future it will be published both in the spring and in the fall.

An Alumni Directory is printed every ten years, the last one being in 1964. It contains the name, address, and pin number of every Beta member. This is kept up to date with a card file by our alumni chairman, who at present is Jim Grigg. He is also doing much to organize our Sixtieth Anniversary banquet. Engraved invitations were sent to 750 alumni. The speaker will be Brother Earl Volin, director of the Mineral Research Institute at Michigan Tech, who will describe his work in New Zealand on a Fulbright grant.

Our Founders' Day banquet was a big success. It was attended by student members and alumni. A local businessman talked on the economy of the area, and then there was a talk on the history and future of our house. A recent cocktail party with alumni and professors from many fields was also a big success.

Work is being started on our chapter room, and a plaque will be hung with the names of alumni who give contributions.

Prior to graduation each member is asked to sign a \$100.00 pledge to the Chapter to be paid within ten years. This will help Beta Chapter provide needed improvements.

Alumni are always welcome at Beta.

JOSEPH P. EPLEY
Corresponding Secretary

GAMMA CHAPTER



Gamma Chapter has become more active in both school and Chapter events during the past year. The Chapter handled very adequately most of the events in the annual Homecoming event this past semester.

The Chapter sought help from the alumni in planning the initiation banquet of February 10. This was the most enjoyable banquet in many years. Alumni speakers and guests gave support to the event. Another banquet is being planned for late April or early May. We hope that it is also a great success.

In May the Chapter plans to have a gathering

with the local alumni to pay tribute to the Colorado School of Mines Peak. This 13,000-foot peak obtained its name through the efforts of Gamma Chapter back in the early 1950's. At the time of its naming and through the following years, it became a tradition for the Chapter to pay tribute to the peak by climbing it once a year. This year Gamma Chapter hopes to renew this tradition.

KENT T. KERR
Regent

DELTA CHAPTER

No Chapter Letter

EPSILON CHAPTER



Epsilon Chapter is pleased to report that progress is being made to establish a truly active Chapter at the University of California. Membership had declined until last year at this time, there was only one active on campus. Following the initiation of three men last May, we have enjoyed mod-

erate success in reestablishing ourselves within the College of Engineering. Recent acceptance of Epsilon Chapter to the Engineering Council, composed of about 15 representatives from various societies and fraternities, will provide a method for participation in joint engineering functions despite our small membership. Publicity of Theta Tau will also aid in overcoming our difficult position.

A lack of personal contact between professor and student, and between students themselves, has made contacting qualified and worthy men our most difficult task this year. A most encouraging feature of our efforts, however, has been the enthusiasm expressed for the Fraternity by our new members. We are convinced that only time and work are necessary to expand the Chapter to active proportions once the meaning of Theta Tau is known.

On March 12 Epsilon initiated four men, bringing the total membership to seven. We were privileged to have Robert E. Pope, Grand Scribe, visit and assist us at this time.

We will find it necessary to concentrate on rushing for the remainder of the year. In conjunction with this, the Chapter will also be trying to establish relations with as many alumni as possible, particularly those in the immediate vicinity. This should help to stimulate interest and growth among the active membership.

We at Epsilon would like to express gratitude to our Adviser, James M. Carman, for his advice and encouragement. Also, special thanks go to Jack E. Payne, Special Representative for California. His dedicated work has been a basic factor in the progress of Theta Tau at Berkeley.

GARY C. BURNHAM
Regent

ZETA CHAPTER



Zeta Chapter maintains several different levels of relationship with our alumni. The corresponding secretary has the responsibility of keeping the addresses of alumni as current as possible. Many alumni inform us when they change addresses, and THE GEAR helps us locate lost alumni. Current information is also relayed to the corresponding secretary by the assistant treasurer.

The assistant treasurer is responsible for the Zeta Cogs, an organization designed to obtain alumni contributions. Current dues are \$10.00 per year minimum, and each contributor is sent a membership card. If a man is a member for 24 years, he becomes a lifetime member of Zeta Cogs. Alumni are encouraged to send current information about themselves along with their contributions. The news supplied by alumni through the Zeta Cogs program is the main source of alumni notes published in the chapter newsletters, which are sent out twice a year.

The Zeta Cogs funds are forwarded to the Zeta of Theta Tau House Corporation, which is in charge of chapter house maintenance and oversees the house's financial affairs. The Chapter Adviser, a member of the K. U. engineering faculty, sometimes works in conjunction with the Corporation Board.

The main events for alumni reunions are the Founders' Day Banquet in October and the Chapter Anniversary banquet in April each year. Fairly elaborate preparations are usually made for these celebrations and all alumni are invited to attend.

Zeta's biggest upcoming event will be the annual K. U. Engineering Exposition, for which we traditionally build an archway.

KEN NIED
Corresponding Secretary

THETA CHAPTER



Theta Chapter has always depended heavily upon alumni for its professional functions. Through alumni we have arranged for both lectures and plant visits. In this respect, we have been very fortunate with our alumni response.

In addition to Founders' Day and initiation celebrations, alumni and their families are invited to attend Theta Tau's Annual Picnic at Columbia. We have been gratifyingly successful with our picnic in the past, and hope for an even better response in the future. This year's picnic will fall on May 7, and alumni are cordially invited to bring their families along for the day's activities, which will probably be held at the Nevis Estate, as usual.

This year we brought out the *ThetaLetter*, Theta's first newsletter. Through this medium we plan to maintain closer contact with all our alumni. We hope to be able to publish the *ThetaLetter* every semester.

BOB BORNHEND
Corresponding Secretary

THE GEAR OF THETA TAU

IOTA CHAPTER

No Chapter Letter

LAMBDA CHAPTER



At Lambda Chapter we enjoy several combined activities with our alumni. We hold two joint banquets a year, one on Founders' Day and the other on April 29, Lambda Chapter's anniversary. The alumni provide lunches for two of the student members at their monthly luncheon meeting. We are also making use of our association with the alumni by involving them in our professional development program.

This fall Lambda Chapter hosted the Western Regional Conference. Lambda alumnus Jay N. Thorpe, Grand Outer Guard, represented the national Fraternity. The Conference was attended by Epsilon, Chi, Psi, Omega, Zeta Beta, and Theta Beta Chapters. The program featured panel discussions on housing, pledging, and ritual.

RICHARD BROWN
Corresponding Secretary

MU CHAPTER



Mu Chapter maintains an active relationship with its alumni. We participate in the North Alabama Alumni Club's Founders' Day celebration and their spring party.

Three of our members, Leon and Gibson, Bernard Jackson, and Sammy Seals, attended the Southern Regional Conference in Houston along with Fred E. Armstrong, Jr., Southern Regional Director and Mu alumnus. Brother Armstrong has regularly attended our initiation ceremonies and parties.

On March 17, S. D. Moxley was the speaker in our Distinguished Lecturer series. Brother Moxley, a Mu Chapter charter member, was the first Regent of our Chapter. We were very pleased to have him as our guest.

Many of our alumni participate in Homecoming activities each year. Their visit to the Capstone is highlighted with a coffee and doughnut hour at the chapter house.

We have a house fund set up for alumni donations. Each member signs a promissory note to pay \$50.00 within five years after graduation.

Mu Chapter is very fortunate to have Grand Regent William K. Rey, a Mu alumnus, as our Chapter Adviser.

This year we hope to extend our alumni relations by publishing a newsletter.

Two of the main social functions of the year were the Christmas Party and Engineers' Day. The Christmas Party was held at the Holiday Inn with Grand Regent Rey, Brother Armstrong, and other faculty alumni attending.

Mu Chapter and the Engineers' Executive

Council sponsored Engineers' Day, one of the major events of the year. The day began with the presentation of technical papers followed by two guest speakers. At 1:30 p.m. we had a student-faculty softball game, followed by exhibits from each of the departments. After an awards banquet at 7:00 p.m., the day was rounded out with an enjoyable evening of dancing.

ANDREW J. MILLS
Corresponding Secretary

XI CHAPTER



In a motion which was passed recently, Xi Chapter decided to discontinue using the term "active members" for current dues-paying members, and in its place substitute the words "student members." This, it is thought, will emphasize the fact that all Xi men are "actives," whether as students or alumni.

Since the alumni are such an integral part of Xi Chapter, maintaining contact with them is one of our main goals. This is done primarily through the Chapter newsletter, *Xi-Lights*, which is published at the end of each semester and sent to each alumnus. These newsletters are six or eight pages long, mimeographed, and stapled together. Last semester's issue was the first one which also contained pictures. The articles included are slanted toward the alumni and include the Regent's report, social and sports news, items from the Wisconsin Alumni Club, and news of any special event, such as the recent chartering of our housing corporation.

In addition, Xi Chapter also urges active participation by the alumni. One of the main benefits this participation has brought about is the securing of a chapter house at 1635 Monroe Street. This was done through the work of our housing corporation, headed by alumnus Don Struckmeyer. Also on the corporation are alumni Joe Moytzu, Dr. Sherman Ansell, Jim Peterson, Dr. Gerald Rohlich, and John Albright. This house will provide living quarters for twelve men of Xi and also provide facilities for Xi functions. In addition, it should help us in our membership drives and rush programs.

Each semester an initiation dinner-dance is held along with the annual Founders' Day banquet in the fall. All alumni in the Wisconsin area are sent invitations and usually a number are present.

Perhaps one of the biggest problems in maintaining contact with the alumni is keeping their addresses up to date. Too often they move without sending their new addresses to the Chapter. Some of these men are relocated by contacting the Wisconsin Alumni Association or the Engineering Placement Office. New addresses are also forwarded from the GEAR office, but in general, our address file is not always current.

Besides securing a chapter house, one of the biggest projects of the semester has been the investigation of the Engineer-in-Training examination. A special committee has been set up to look into this test and investigate possibilities of elimi-

nating it for graduates of accredited schools. This will involve a considerable amount of work, so the project will be carried over the next few semesters.

THOMAS F. SCHUPPE
Corresponding Secretary

OMICRON CHAPTER



The alumni are a very important part of a fraternity and especially so with a professional fraternity such as Theta Tau, since they are the ones that draw the guidelines for the active members. With this idea in mind, Omicron Chapter keeps an up to date alumni file. This file contains names and addresses of all alumni and also their activities if these are made known to us.

There is a committee of active members responsible for keeping the file up to date and in neat order. They also keep it readily accessible to any member wishing to consult it. This committee also cooperates with the newsletter committee in supplying names and addresses of the alumni to whom the newsletters are sent. The committee members are changed each semester so that more of the actives can become acquainted with the mechanics of the file and also to acquaint them with Omicron Chapter's alumni.

Omicron Chapter has just initiated a new system for selecting pledges. The main feature of the system is an interview board. This board consists of active members and it is their duty to interview individually all of the prospective pledges. They each fill out an evaluation sheet which expresses their impressions of the prospective pledge immediately after each interview. These sheets are then condensed and the results are presented to the Fraternity at a business meeting. We have found this system to be of great value in the selection of our pledge classes since it eliminates much guesswork on the part of the Chapter actives.

Omicron Chapter again took an active part in Mecca Week, our week-long engineering festival. An active member was chairman of each of the seven committees as well as general chairman, and these men provided the services that again made Mecca Week a success.

RONALD MIERSEN
Corresponding Secretary

PI CHAPTER



PI Chapter at this time is undertaking compilation of an extensive alumni list, which has been lacking in the past. As soon as this list is obtained, we shall make further plans for close relations with our alumni brothers. We look forward to the letters of other Chapters in THE GEAR for suggestions and guides to our future program.

One of the highlights of the year here is our rush program. The program has been extended

to run from March 4 to April 8. Due to our lack of a chapter house, our rush functions are held at social fraternity houses. For the first time, we are taking photographs of all russees, thus making it easier for the brothers to remember names and faces. So far this procedure has worked with excellent results.

We have taken as our special project this year Engineering Open House. Brothers will be available to high school groups which visit the University during this period. An exhibit will be placed in the front hall of our main building consisting of every book used by engineers in their pursuit of learning. To inform the students of Engineering Open House, we will mail newsletters to all first year engineers, hoping that they will respond to the opportunity to appreciate their school even more.

Socially our Chapter is on the move. A banquet held at a local country club for newly-initiated brothers was a great success. Therefore, several others are in the planning stage along with several private parties and an annual hay ride.

At PI we nominate candidates to run for Engineering School offices as well as Student Council and Judiciary Committee. Our record in the past has been outstanding, and we hope to keep it so with Engineering School elections coming up right after our spring break.

With the increased contact afforded by these functions, brotherhood at PI will flourish.

CHARLES E. JOHNSON
Corresponding Secretary

RHO CHAPTER

No Chapter Letter

SIGMA CHAPTER



The brothers of Sigma Chapter have been concerned with the lack of alumni relations, which has become more apparent in the past few years. Although we are in contact with our alumni, this year we are working to improve relations and stimulate interest in the local Alumni Association.

We contact our alumni at least once each quarter through the Sigma News letter. In it we describe the activities of the Chapter, such as leadership and professional development programs and social functions. Also we make known any special recognition received by any brother from the university. Soon we will publish and distribute an alumni directory, including the names, addresses, and years of all Sigma alumni.

Sigma Theta Tau is our house corporation, which meets frequently during the quarter to discuss the house finances and needs. It also acts as our Alumni Association since the Central Alumni Association has not been very active in recent years.

This spring we hope to revive our alumni relations by taking advantage of the Annual Conference on Engineering (ACE Day). This event,

THE GEAR OF THETA TAU

sponsored by the university, brings school and industry people together to share ideas. After the university's program, all of the alumni and their wives are invited to dinner and a short program. We hope to make ACE Day a traditional "Theta Tau Homecoming."

With these ideas and goals, we hope to revive our Alumni Association. But we cannot do it alone, we need the support of our alumni once these plans are initiated.

DAVID L. WOLF
Corresponding Secretary

TAU CHAPTER



Tau Chapter considers its 650 alumni to be extremely important. Since 1948 continued efforts at establishing strong chapter-alumni relations have been undertaken. Unfortunately, the first two attempts ended in failure. In 1948-49 Brother Jim Blowers revamped the alumni address files, publishing a directory as well as several newsletters. After his graduation this work was not kept up, and the Chapter did no significant work until 1955. At this time at least two more newsletters were published and the address files partly updated.

Finally, in 1961 the full significance of the alumni project was realized by then Regent Henry McLeod and the active brothers. This came as a result of urgent requests which were sent to the alumni for financial assistance in paying off a growing Chapter debt to the national Fraternity. In spite of the poor mailing list used, alumni response was large. In fact, the entire debt was paid off and a \$50.00 excess was used to start a Chapter housing fund.

Because of this fine support, the brothers were encouraged to form a continuing alumni program. The first step was the establishment of a Chapter newsletter, *The Pyramid*, which will be published for the fourth consecutive time this spring. Unfortunately, the cost and the time required prevent publication more than once a year. Along with this newsletter has come an alumni address correction campaign. We now have addresses for 80% of our alumni and believe we have correct addresses for 65%.

Of special interest are the 150 alumni located in the metropolitan Syracuse area. We feel that such a large group can support an alumni organization. As a result, a reunion was held after the 1964 Homecoming football game, which was a failure due to bad weather. This year each local alumnus was invited to the Engineers' Ball. Although several alumni expressed an interest, only Brother David Feller was able to attend.

In the coming semester, the Chapter is organizing an alumni-active picnic. This event will be announced to all the local alumni by letter and as many as possible will be contacted personally. Hopefully, a significant group will attend, which can form a hard core group eventually leading to an active alumni organization.

The Chapter realizes the difficulty that our alumni will have in forming such an organization

because of the time involved. The Chapter recently initiated six men and has a pledge class of six more. As a result a "holdover" membership of 17 is expected. This will be one of the larger groups of actives in recent years, and it is felt that they can handle most of the burdensome paper work in forming an alumni organization.

There is a distinct difference between the program discussed above and the Chapter's housing project. It is our belief that housing should not be the purpose for organizing an active alumni organization. This is not to say that alumni assistance is not needed to obtain housing, but the active interest here must come from the actives themselves.

In order to obtain housing, financial assistance is of primary importance. The Chapter's immediate interest is to build up a substantial housing fund (we now have \$100.00). Two plans for doing this will be put into effect, the first being a 25-25 now and later plan. Under this plan the active brother may voluntarily agree to pay \$25.00 into the housing fund now and \$25.00 within five years of his graduation. The second plan is the formation of an alumni club with annual dues for all Chapter alumni. This idea was suggested by Brother Earl M. Olley during the 1961 crisis. In fact, there is Fraternity precedence for this kind of organization. With this in mind, the actives particularly look forward to reading the Zeta Chapter letter which will probably discuss their Zeta Cogs organization.

We were delighted to find that several Tau alumni have contributed to Theta Tau progress, and sincerely hope that many more will do so.

GEORGE E. FOX
Corresponding Secretary

UPSILON CHAPTER



Upsilon Chapter maintains close contact with its alumni through several means. One is the fall Founders' Day banquet. The Chapter also holds luncheons at the fraternity house on the weekends of football games played at Fayetteville. In addition to the *Upsilon Messenger*, last semester the Chapter mailed questionnaires to all alumni concerning their present positions and activities. The returned information was then compiled and distributed to all alumni through the *Upsilon Messenger*. This provides a means of keeping the Chapter and alumni in touch with each other.

Upsilon is presently attempting to establish an Alumni Association in Little Rock, Arkansas in hopes of gaining funds to build a new house in the near future.

This year our Chapter is again very active in campus activities. We purchased and posted signs publicizing National Engineers' Week and several members were actively engaged in the different events during Engine Week on campus, with J. D. Cole being elected St. Pat. Six of our members were tapped for Blue Key and ODK leadership groups. We are looking forward to our



Brother S. D. Moxley's visit to the Mu Chapter house prompted this photo of Roger Hall, Mike Atkison, Jack Mills, Brother Moxley, Regent Gibson, Grand Regent Rey, and Rusty Dockery.



Tau Chapter members did their part in selection of the queen for Syracuse's annual Engineers' Ball. Here Brother Allan Kopp introduces the five queen finalists and their escorts at the 1965 Engineers' Ball.

Kappa Beta delegation to the Regional Conference in Houston. *First row:* Mickey McReynolds; Dale Steen, Regent; Bobby Webb (holding the Man-Miles plaque); Fred Armstrong, Regional Director; Carson Jackson. *Back row:* Thomas Parker; Joe Allbritton; Jim Lancaster; Jeff Herron. Steen, Herron, and Allbritton attended as pledges.



local banquet celebration April 3, and are expecting a large turnout from the local alumni.

WALTER JENNINGS
Corresponding Secretary

PHI CHAPTER



As the brothers of any fraternity graduate, they soon become engrossed in their jobs and families. And, as the years pass by, there is a natural tendency to forget their student homes. Phi Chapter overcomes this tendency in a variety of ways.

Each year the Chapter sends an invitation to every alum to visit during Homecoming. Last Homecoming some 40 alumni journeyed back to Purdue to renew old memories. They also renewed old acquaintances as some of the alumni met their old fraternity brothers for the first time in over ten years. Both of the coasts were represented, as well as nearly every class since '47. You can be sure the alumni that returned to Phi for last Homecoming left the Chapter with much stronger feelings of fellowship.

At Christmas Phi sends cards to all the alumni and receives many in return. The return addresses of the cards we receive are checked with our alumni file, which is then updated. We also have a computer program to facilitate addressing alumni mail. This allows us to write to the alumni with much less (pledge) labor.

The Chapter's newsletter is another way that the Chapter maintains alumni relations. Each semester we send the newsletter, entitled the *Link*, to all the alums. This keeps the alumni informed on the previous semester's activities, and hopefully creates alumni interest in the Chapter. Unfortunately, some of the newsletters return to the Chapter. A letter is then sent to the "lost" alum's last known address. A check for the new address of the lost alum is also made with the University.

In 1958 Phi successfully completed "Operation Facelift," a much needed remodeling of the house. The alumni, organized by the Alumni Association, came through in great style, doing all that was asked of them. This project did more than remodel the house; it rekindled alumni interest. In 1964, the alumni voted in an annual \$10.00 alumni dues. The money is used to defray expenses such as the *Link*. These dues, while not compulsory, provide enough capital to maintain close alumni relations without placing a burden on the Chapter.

As for the future, the Chapter hopes to maintain or improve the present close relation with the alumni.

PAUL DOANE
Corresponding Secretary

CHI CHAPTER

No Chapter Letter

PSI CHAPTER

No Chapter Letter

OMEGA CHAPTER



Omega Chapter is very interested in the accomplishments of its alumni, and we encourage correspondence between the Chapter and all Omega alumni. We feel that

letters to the Chapter are both interesting and informative, giving the actives ideas and impressions of industry. Letters to the alumni keep them up to date on Chapter activities and improvements.

Each year Omega Chapter receives all types of correspondence from the alumni, including telephone calls, post cards, letters, and also personal visits. Perhaps the largest contribution of Omega Chapter to cultivating alumni-chapter relationships was the organization of a Theta Tau reunion for all Omega Chapter alumni, which was held in July of 1965. Approximately 200 alumni and their wives were present, and they enjoyed a very pleasant day reviewing their college days and meeting a few of the actives who were on hand to serve refreshments and to help answer any questions. Plans for a new chapter house were discussed informally, with most everyone agreeing that a new house would definitely be an asset to our Chapter.

For National Engineers' Week Omega Chapter helped to organize an engineering program at which several engineers from the Rapid City area gave very enlightening speeches concerning engineering. (See article on page 10.)

Theta Tau is very competitive in intramural sports this year, as in years past. Omega Chapter had three bowling teams and three basketball teams this year and is presently organizing three volleyball teams to compete with the other two fraternities on campus and with other student teams.

We have held many informal parties for the student nurses working in Rapid City. The actives escort the nurses from the dorm to the chapter house where refreshments are served and everyone gets acquainted. These parties have all been successful events for the Chapter.

DEAN P. EDMUNDSON
Corresponding Secretary

GAMMA BETA CHAPTER



Gamma Beta has the good fortune of having an Alumni Association in this area. The Chapter attempts to maintain close relations with the National Capital Alumni Association, and we have been fairly successful in the last couple of years.

Primarily we maintain this contact through the exchange of representatives at business meetings. The Chapter also sends the notices of business meetings and social functions to all alumni who have expressed an interest. As a result, we normally have several alumni at the business meetings and there are always at least a half dozen alumni at our social functions.

Last year was the Thirtieth Anniversary of the installation of Gamma Beta. The Chapter worked closely with the Alumni Association on the spring banquet and ball. The event was highly successful, with far more alumni present than active. We are now making plans for a similar event on Founders' Day next fall.

Alumni are also active in Chapter operations. For instance, Ray Morales and a couple of other alumni are now working with several actives to find a suitable house for the Chapter. John Wolfgang and other alumni help with such normal Chapter operations as auditing the financial records.

Gamma Beta is extremely proud of its alumni relations and hopes that more alumni will take an active interest in the Chapter. We will be very glad to hear from them.

JOHN FLOWERS
Corresponding Secretary

DELTA BETA CHAPTER



Delta Beta has recently turned its energies into two main avenues—rushing and the formation of an alumni club.

The Chapter's rush program began with a very successful smoker last summer which was attended by more rushers than had any other kickoff function in years. The combination of a rush letter and a personal phone call to each freshman was responsible for the turnout. As the quarter progressed, Delta Beta held several other parties and smokers which resulted in the pledging of 22 freshmen.

Perhaps our biggest achievement so far this year was the formation of an alumni club. The first meeting was held in February and was attended by the Grand Scribe, Bob Pope. Meetings have been scheduled quarterly. We have tried often in the past to sponsor the formation of such a club, and we hope that this time we have finally succeeded in mending the group into a unit. Our thanks and appreciation go to Brother Pope, who was so instrumental in the club's formation.

BOB FOWLER
Pledgemastrer

EPSILON BETA CHAPTER



Alumni relations at Epsilon Beta fall into three distinct categories: social, pledging, and housing.

During the school year, the actives join the alumni for two major social events. These are the Founders' Day Dinner Dance and our annual Memorial Day picnic. For the Dinner Dance, the job of securing a hall and band has traditionally been given to the alumni, while the actives attend to the many details such as programs and favors for the ladies. Seating is arranged so as to intermingle the actives and

alumni as much as possible. This gives the actives a chance to get to know the alumni better and also to hear what "our real engineers" have to say about their chosen fields. After dinner, awards, such as the "pitchfork" and "boo-bee," are presented to the brothers for outstanding achievement (or misachievement, as the case may be) during the past year.

Our Memorial Day picnic is an informal get-together lasting the entire day. This is the one day of the year that the alumni have a chance to prove their vaunted athletic prowess. Try as they might, though, they're usually on the losing end of most events, including last year's fiercely contested, extra-innings ball game.

During our pledging period, we try to have the pledges meet as many of our alumni as possible. This is done by inviting the alumni to attend the pledges' informal and stag party. Meeting and talking to the alumni gives each pledge an opportunity to find out exactly what will be expected of him as a graduate engineer. Both pledges and actives can learn a great deal from alumni experience, and thus are better able to judge whether or not their undergraduate program will help them towards their desired goal.

At present, our most important phase of alumni relations is housing because we will soon lose our present house to Detroit's Urban Renewal Program. For this reason, the strength and financial well-being of the Association is extremely important to us. Because Wayne State does not have any definite plans regarding fraternity housing, the burden of changing addresses has fallen entirely to our housing association. The necessity of finding a new house has aroused new interest by the members of the Association. Attendance at recent meetings has skyrocketed. The job of moving into a new house is a complex one, requiring the close cooperation of many people. Thus, while the actives are searching for a new house, the alumni are engaged in finding the most financially advantageous way of disposing of our present house. Furthermore, since W.S.U. will only discuss housing matters with alumni groups, the alumni must act as liaison between the Chapter and the University Housing Office.

In order to keep over 140 alumni, spread out between New Jersey and California, informed about Chapter events such as the above, the Chapter publishes and distributes a monthly newsletter. The newsletter covers a variety of topics including minutes from the monthly alumni meeting, topics to be discussed at the following meeting, births, deaths, and general Chapter news. Alumni relations are only as good as the lines of communication between actives and alumni. Through the newsletter, we strive to strengthen the alumni's tie with his Chapter.

TONY FILIP
Corresponding Secretary

ZETA BETA CHAPTER

No Chapter Letter

ETA BETA CHAPTER

No Chapter Letter

THETA BETA CHAPTER

No Chapter Letter

IOTA BETA CHAPTER



On February 15, 1966 Iota Beta Chapter celebrated its second anniversary of joining the brotherhood of Theta Tau. These last two years have seen our Chapter rise from its birth, through the stages of infancy, into what we consider a well-organized professional fraternity. Mistakes

were made, but the experience gained from these mistakes was a wealth of knowledge. New methods of organization were found and are now being utilized in all facets of fraternal life at Iota Beta. Perhaps the biggest breakthrough came in the realm of alumni relations.

We have realized that the "strong bond of fraternal fellowship" must be fostered not only among active members, but among alumni also. With this in mind, a plan has been conceived which we hope will foster brotherhood with our alumni. The alumni chairman, who is elected by the active members for a term of one year, is in sole charge of executing this plan. At the end of the school year, a profile of all graduating seniors is made. Each profile contains the history of the member at the University of Detroit. All of his accomplishments, awards, honors, and a few comical anecdotes, are included, along with a recent photograph. We hope these profiles will help stimulate the interest of future members in their alumni brothers. When an alumnus has to be contacted, his profile will contain all pertinent information necessary to correspond with him. If this plan of making profiles of alumni is continued each year, a valuable record of all alumni will always be available.

These profiles, however, are just one facet of the plan to promote alumni relations. Since many of our alumni are residing outside of Detroit, most of our small professional and social functions are lacking in a large representation of alumni. However, the alumni who live in Detroit are always invited to any professional or social functions. These functions include stag parties, Founders' Day celebrations, and the annual dinner dance. When a large function is held at Iota Beta, all alumni, whether they live in Detroit or East Mongolia, are invited.

This plan of attack is Iota Beta's method of promoting a "strong bond of fellowship" with its alumni. One last word must be said, though, on alumni relations. Good alumni relations is a two-way street. Iota Beta Chapter does as much as possible to promote relations. However, the alumni must also help the Chapter. A change of address or a summary of professional accomplishments is always welcome. When both the Chapter and the alumni work together, nothing can go wrong with alumni relations.

A few words must be said concerning the participation of Iota Beta Chapter in the Mardi Gras celebrations held at the University of Detroit.

Even though no trophies or rewards were won, the participation of members and pledges, working together in close harmony, proved that "fraternity and brotherhood" are not just idealized words, but a real thing. The highlight of Mardi Gras was a street parade, patterned after the famous New Orleans parades. Since the theme was Greek mythology, we decided to construct a talking Trojan horse, holding Greek members and pulled by Trojan pledges. After many hours of work under the leadership of chairman Mark Callan, the horse was completed about a half hour before parade time. The parade began and all human and mechanical parts were functioning well until we turned the last corner before the judges' stand. Then the impossible happened. Under the strain of bumps and jolts, the horse broke its leg. Hours after the parade, Engineer Mark Callan still insisted that the fault lay in poor quality material and not in engineering miscalculation. Oh well, that's life in Troy.

PAUL L. SAK
Corresponding Secretary

KAPPA BETA CHAPTER



Because Kappa Beta is the newest chapter of Theta Tau, we have a very small number of alumni. However, we do have some, for we have been established for about 18 months. Some of these alumni have sent their addresses to the Chapter, but a few have not. We are now in the process of locating those few who have not contacted us since last summer. By the end of this semester we hope to have complete files on our alumni.

Our alumni are scattered all over the South, and maybe some are outside the South, and since they are so few in number, they have not been able to get together with us. However, they are all invited to our social functions, and are welcome to come back at any time. Our first newsletter will be published this spring, and all alumni will be sent a copy.

Plans are in progress for a house to be built on the campus, but since none of our alumni work near here, there are none on our Housing Corporation. As soon as plans are complete concerning financing the house, our alumni will be notified and will be asked to contribute whatever amount they feel they can.

Plans are in progress for a house to be built on the campus, but since none of our alumni work near here, there are none on our Housing Corporation. As soon as plans are complete concerning financing the house, our alumni will be notified and will be asked to contribute whatever amount they feel they can.

Several brothers of Kappa Beta attended the Southern Regional Conference hosted by Eta Beta at the University of Houston. This was our first Regional Conference, but we won the man-miles plaque, and we think this is a good start toward an active Chapter.

As all good chapters do, we celebrated Founders' Day. All our alumni were invited to a delicious meal at a local restaurant. Our biggest social function of last fall, though, was our birthday celebration. One year old we were last November 21! We had a dance at the local country club with music furnished by Brooks and the Dynamic

Night Raiders, a local group. Everyone danced and had a good time.

The big event of this spring will be the Second Annual Senior Recognition Banquet and Dance, during which we recognize the seniors who will graduate this June, and announce the winner of the Senior of the Year Award.

Not all of our social activities are for brothers and alumni of Kappa Beta only. We have had two functions with Mu Chapter at the University of Alabama, one after the Mississippi State-Alabama basketball game, and the other at the University of Alabama's Engineers' Day and banquet. We were also pleased to have Leonard Gibson and Regional Director Fred Armstrong, both of Mu Chapter, at our initiation last fall. They added a lot to the meeting just by being there.

Spring rush was well conducted and produced good results. We had two smokers. At the second meeting Past Regent James Upchurch, charter member and first Regent, presented a talk entitled "What Theta Tau Has Meant to Me." After that we showed some slides to the rushees. We extended bids to all 19 of our rushees, and as a result we have the largest and certainly one of the best pledge classes we have had.

Our house plans are progressing well. An architect is presently preparing floor plans and an artist's conception of the house, and in the meantime we are looking for a house to rent. It will not be too long, we hope, before we will have our own house on the campus.

THOMAS H. PARKER
Corresponding Secretary

Additions to Membership

ALPHA CHAPTER

- 776 Arthur Elmer Brandt, Warroad, Minn.
- 777 Peter Lawrence Emmons, Virginia, Minn.
- 778 Timothy Lynn Gillis, Hibbing, Minn.
- 779 Thomas Dean Peterson, Austin, Minn.

BETA CHAPTER

- 959 Nicholas Daniel Mancini, Grosse Pointe Woods, Michigan
- 960 David Larry Berlin, Ironwood, Mich.
- 961 Frederic Marty Fregerio, Ironwood, Mich.
- 962 Wayne Robert Marley, Riverdale, Ill.
- 963 David Marvin Kimball, Detroit, Mich.
- 964 Stephen Arthur Berner, Rochester, N. Y.
- 965 Robert George Zdravceky, Crystal Falls, Michigan

DELTA CHAPTER

- 1059 Erik Gunnar Bule, Darien, Conn.
- 1060 Nils Allan Nilsson, Cleveland, Ohio
- 1061 B Jeffrey Katz, Canton, Ohio
- 1062 Richard Lee Anglin, Jr., Zeigler, Ill.

EPSILON CHAPTER

- 867 James Marlow Christensen, Sherman Oaks, California
- 868 Carl Oliver Gregory, Santa Cruz, Calif.
- 869 Richter Fredric Kinsane, Glendale, Calif.
- 870 Ronald James Tribbett, Riverside, Calif.

ZETA CHAPTER

- 685 Gary Alan Pratt, Topeka, Kans.
- 686 Jeffrey Lynn Bram, Overland Park, Kans.
- 687 David Russell Woolsey, Overland Park, Kansas
- 688 John Stephen Corson, Shawnee Mission, Kansas
- 689 Robert Hoyt Weaver, St. Joseph, Mo.

THETA CHAPTER

- 702 Aron Brall, Bronx, N. Y.
- 703 Arthur Irving Casabianca, New York, N. Y.
- 704 Edward Chwekun, Brooklyn, N. Y.
- 705 Alan Howard Garfinkle, Charleston, S. C.
- 706 Howard Stanley Landsman, Bayside, N. Y.
- 707 Jerome Alexander Patterson, Dorchester, Massachusetts
- 708 Eric Alan Schon, New York, N. Y.

IOTA CHAPTER

- 1012 Robert Glenn Alexander, Carthage, Mo.
- 1013 John Kent Caruthers, Madisonville, Ky.
- 1014 Donald Raymond Flugrad, Jr., St. Joseph, Missouri
- 1015 Donald Henry Hartman, Florissant, Mo.
- 1016 Charles Dennis Jerabek, St. Louis, Mo.
- 1017 Richard Lee Kastel, St. Louis, Mo.
- 1018 Patrick Cline Key, Rolla, Mo.
- 1019 James Edwin Kochs, St. Louis, Mo.
- 1020 John Edward Munsey, Springfield, Mo.
- 1021 David Leo Otto, St. Louis, Mo.
- 1022 John Matthews Owens, Poplar Bluff, Mo.
- 1023 Edward Lewis Schmidt, Jefferson City, Mo.
- 1024 Richard Ernest Schrick, Webster Groves, Missouri
- 1025 William Edward Stewart, Jr., St. Louis, Mo.
- 1026 Richard Wayne Wohlberg, St. Louis, Mo.
- 1027 Richard Alva Woodfield, Woodbury, N. J.
- 1028 Karl Frederick Ziegler, Jennings, Mo.

LAMBDA CHAPTER

- 857 Paul C Abegglen, St. Anthony, Idaho
- 858 Joseph Fazzio, Helper, Utah
- 859 Jack Guy Fisher, Pocatello, Idaho
- 860 William Stanley Flothmeier, Norristown, Pa.
- 861 Billy Ray Jackson, Salt Lake City, Utah
- 862 Michael George Mladjevsky, Salt Lake City, Utah
- 863 Richard Hurd Simons, Salt Lake City, Utah
- 864 Robert Gerald White, Salt Lake City, Utah
- 865 Jeffrey Stephen Lee, Salt Lake City, Utah

THE GEAR OF THETA TAU

MU CHAPTER

- 865 Edward Burrell Dockery, Jr., Tuscaloosa, Alabama
 866 Clarence Pierce Boyd, Emelle, Ala.
 867 Robert Marion Campbell, Jr., Grove Hill, Alabama
 868 John Oscar Hanley, Jr., Gainesville, Ala.
 869 Edwin Ghadon Howard, Tusculumbia, Ala.
 870 David Michael Miller, Northport, Ala.
 871 Andrew Jackson Mills, Goshen, Ala.
 872 Sammy James Seals, Tuscaloosa, Ala.

XI CHAPTER

- 288 William Charles Boyle, Madison, Wis.
 289 Jonathan Russell Axt, Mequon, Wis.
 290 Arne Martin Bolstad, Oslo, Norway
 291 Daniel Thomas Ferge, Palmyra, Wis.
 292 James Delano Nielsen, Evansville, Wis.
 293 James David Kestly, Appleton, Wis.
 294 Robert Goulden Van Fleet, Whitefish Bay, Wisconsin
 295 William Stanley Weber, Mequon, Wis.

OMICRON CHAPTER

- 701 Michael Ray Gilbert, Keokuk, Iowa
 702 Donald Lee Greff, Mason City, Iowa
 703 Daniel Ernest Jones, Clinton, Iowa
 704 Larry Kenneth Kintzel, Stanwood, Iowa
 705 Joseph Richard Papp, Berwyn, Ill.
 706 Dean Carter Peterson, Catalina, Iowa
 707 Carl Blaine Robertson, Des Moines, Iowa
 708 Daniel Rulen Rogness, Royal, Iowa
 709 James Brown Saylor, Jr., Rock Island, Ill.
 710 Robert Michael Weldon, Iowa City, Iowa
 711 Arthur Baustian de Wit, Inwood, Iowa
 712 Robert Joseph DeWitt, Knoxville, Iowa
 713 Marvin Wayne Edmen, Kalama, Iowa
 714 Robert LeRoy Goodman, Clinton, Iowa
 715 James Matthew Macek, Cedar Rapids, Iowa
 716 Gregory Thomas Mischach, Marengo, Iowa
 717 Jonathan David Reimer, Chicago, Ill.
 718 Gary Lee Von Ahlen, Williamsburg, Iowa

PI CHAPTER

- 705 James Hiram Aylor, Madison, Va.
 706 Larry Joe Guffey, Hampton, Va.
 707 Robert McIntyre Bennett, Richmond, Va.
 708 Brian John Boland, Needham, Mass.
 709 David Wayne Boushard, Warwick, R. I.
 710 Robert Moffett Bowman, Riner, Va.
 711 Douglas Geddes Ege, Locust, N. J.
 712 Ketron Hugh Ellison, Falls Church, Va.
 713 Richard Ellis Garriott, Virginia Beach, Va.
 714 Robert Warfel Harrell, Portsmouth, Va.
 715 David Paul Hines, Aldie, Va.
 716 John Thomas Hutton, Hampton, Va.
 717 Michael Joseph Kaputa, Springfield, Va.
 718 George Dimnick Kittredge III, Mt. Vernon, New Hampshire
 719 Alan Keith Liskay, Penn Laird, Va.
 720 William Maurice Mettler III, Martinsburg, West Virginia
 721 John Leonard Fedrick, Jr., Folsom, Pa.
 722 John Vincent Pincavage, Jr., Mohnton, Pa.

- 723 George Arnold Schapiro, Richmond, Va.
 724 Charles Francis Wood III, Charlottesville, Virginia
 725 Douglas Spindle Wood, Jr., Richmond, Va.
 726 George Henry Braunschiger, Jr., Richmond, Virginia
 727 Richard Lee Cunningham, McLean, Va.
 728 David Cochran Dando, Germantown, Tenn.
 729 William Silas Garrett, Jr., Montgomery, Ala.
 730 Charles Edward Johnson, Narrows, Va.
 731 Phil Peter Leventis, Columbia, S. C.
 732 Richard Wilfred Tuggle, Jr., Richmond, Va.
 733 Peter Manning Vaughn, Huntington, N. Y.
 734 Robert Gordon Williams, Memphis, Tenn.

RHO CHAPTER

- 714 Ernest George Alexander, Jr., Pine Bluff, Arkansas
 715 Howard Burgess Chambers, Jr., Winston-Salem, N. C.
 716 Joe Eli Fogleman, Liberty, N. C.
 717 Carl Dennis Honeycutt, Gastonia, N. C.
 718 Robert Lynwood Potter, Raleigh, N. C.
 719 Ronald Stafford Presson, Monroe, N. C.
 720 James Randolph Rooker, Wilmington, N. C.
 721 Charles William Saalfrank, Jr., Charlotte, North Carolina
 722 James Dixon Schmidt, Gastonia, N. C.
 723 Maurice Cornelius Todd, East Bend, N. C.

SIGMA CHAPTER

- 596 James Roger Hannahs, Columbus, Ohio
 597 Dietrich Huxst Lannert, Cleveland, Ohio
 598 David Leslie Wolf, Wadsworth, Ohio
 599 William John Dandalides, Lorain, Ohio
 600 David Lee Eshler, Carrollton, Ohio
 601 Dennis Roy Myers, Kansas, Ohio
 602 Ronald Adrain Schwartz, Dayton, Ohio

TAU CHAPTER

- 668 George Alan Pierce, Worcester, Mass.
 669 Edward Albert Hull, West Seneca, N. Y.
 670 James Grant Hughes, Pittsford, N. Y.
 671 George Edward Fox, Syracuse, N. Y.

UPSILON CHAPTER

- 659 Donald Lenny Meade, Magnolia, Ark.
 660 James Chris Poole, Malvern, Ark.
 661 Sammy Charles White, Hot Springs, Ark.
 662 Randy George Murphy, Searcy, Ark.
 663 James St. John Keel, Jr., Colton, Calif.
 664 James Jerrel Tanner, Jr., Batesville, Ark.
 665 Richard Max Kline, North Little Rock, Ark.
 666 James Marvin Sanders, Okay, Ark.
 667 Henry Moss Rowe, Jr., Washington, Ark.
 668 Harold Turner Whitson II, Clarksville, Ark.
 669 Gerald Don Emmert, Paragould, Ark.

CHI CHAPTER

- 692 Ken Eugene Humble, Mesa, Ariz.
 693 Edwin Lee Lantzer, Wilcox, Ariz.
 694 John Robert Moody, Tucson, Ariz.

PSI CHAPTER

- 479 James Russell Loomis, Butte, Mont.
- 480 David Wesley Bennett, Butte, Mont.
- 481 John Leonard Gow, Butte, Mont.
- 482 Robert Edward Watts, Kittery, Maine
- 483 Clinton Eugene Degenhart, Philipsburg, Montana
- 484 Robert John Ramsey, Jr., Butte, Mont.
- 485 Robert Chris Balliser, Great Falls, Mont.
- 486 William Robert Lehfeldt, Lavina, Mont.
- 487 David Clarence Koskinaki, Butte, Mont.

OMEGA CHAPTER

- 639 Neil Stanley Hawthorne, Rapid City, S. D.
- 640 Thomas Paul Lamp, Castle Rock, Colo.
- 641 Jon Einar Skaarhaug, Sioux Falls, S. D.
- 642 Robert Albert Stolp, Greenbush, Minn.
- 643 John Wilbur Synhorst, Lead, S. D.
- 644 Paul Carson Wood, Mitchell, S. D.

EPSILON BETA CHAPTER

- 182 Richard Stephen Cieslikowski, Hamtramck, Michigan
- 183 Anthony Edmund Filip, Detroit, Mich.
- 184 James Edward Ford, Richmond, Mich.
- 185 John Mitchell Polkowski, Jr., Dearborn Heights, Mich.
- 186 Donald Thaddeus Winniewski, Detroit, Mich.
- 187 Charles Case Dattolo, Oak Park, Mich.
- 188 Martin Wolfgang Sirowatka, Detroit, Mich.
- 189 Chester J Sprinkle II, Detroit, Mich.

ETA BETA CHAPTER

- 98 Donald Richard Ballard, Houston, Texas
- 99 John Louis Boeger, Pasadena, Texas

- 100 Charles Michael Monroe, Houston, Texas
- 101 James Richard Osina, Houston, Texas
- 102 Roy Allen Smith, Houston, Texas
- 103 Noel Ross Strader II, Houston, Texas
- 104 Stuart Erwin White, Houston, Texas
- 105 Phillip George Dolezal, Fort Lavaca, Texas
- 106 Bernard Riley Reyer, Houston, Texas
- 107 Glenn Roy Rieger, Wharton, Texas
- 108 Kenneth Lee Wamuel, Houston, Texas
- 109 Frederick Louis Weston, Houston, Texas
- 110 Charles Verne Kirkpatrick (Honorary), Houston, Texas

THETA BETA CHAPTER

- 38 Michael Ross Davenport, Seattle, Wash.
- 39 Lawrence Allan Knutsen, Seattle, Wash.
- 40 Scott Chandler Richmond, Seattle, Wash.
- 41 Donald Alvin Risan, Seattle, Wash.
- 42 Alex Sumner, Kirkland, Wash.

IOTA BETA CHAPTER

- 78 Walter Joseph Wietecha, East Detroit, Michigan

KAPPA BETA CHAPTER

- 45 Henry Dale Stoen, Jackson, Miss.
- 46 Jeffrey Lynn Herron, Findlay, Ohio
- 47 Benjamin Fredrick Ogletree, Clinton, Miss.
- 48 Claude Joseph Allbritton, Clinton, Miss.
- 49 William Houston Newton III, Long Beach, Mississippi
- 50 Alvin Morris Conn, Jr., Memphis, Tenn.
- 51 Vernon Webster Mills, Jr., Weir, Miss.
- 52 William Waters McBroom, Verona, Miss.
- 53 Everett Truly Beers, Yazoo City, Miss.

MIT Members Back on Mailing List

Eta Chapter at the Massachusetts Institute of Technology was established in 1912 and became inactive about 1930. During that time 301 men were initiated into the brotherhood of Theta Tau. Most of these have long since lost contact with the Fraternity, a fact to be regretted, since all members are initiated for life regardless of the fate of their chapters.

Through the courtesy of the MIT Alumni Association, we have obtained the addresses of nearly all the living alumni of Eta Chapter, and they will begin receiving THE GRAB with this issue. We welcome them to the ranks of active Theta Tau alumni, and anticipate receiving news from them for future issues.

Looking for a New Position?

Engineering Career Market is a publication which lists positions and opportunities available. If interested write to P.O. Box 540, Canton, Illinois 61520. It's free to individuals.



Theta Tau Directory

Theta Tau Fraternity was founded at the University of Minnesota, Minneapolis, Minnesota, on October 15, 1904, by:

ERICH J. SCHRAEDER

ELWEN L. VINAL, 4039 West Mercer Way, Mercer Island, Washington 98040

WILLIAM M. LEWIS, 33 Pilgrim Lane, Drexel Hill, Pennsylvania 19026

ISAAC B. HANES, 2120 Northwest Boulevard, Spokane, Washington 99205

PAST GRAND REGENTS

ERICH J. SCHRAEDER, *Alpha*, (1904-1919)*

GEORGE D. LOUDERBACK, *Epsilon*, (1919-1925)*

J. SIDNEY MARINE, *Edu*, (1925-1927), 45 Popham Road, Scarsdale, New York 10583

RICHARD J. RUSSELL (Dr.), *Epsilon*, (1927-1931), 4575 Highland Rd., Baton Rouge, La. 70808

FRED COFFMAN, *Lambda*, (1931-1935)*

HEDDMAN H. HOPKINS, *Beta*, (1935-1937), 3320 Culver Avenue, Evanston, Illinois 60201

JOHN M. DANIELS (Dr.), *Nu Honorary*, (1937-1939), 350 Pinewood Lane & Cole Road, Sarver, Pennsylvania 16055

RUSSELL G. GLASS, *Sigma*, (1939-1946), Saddleback Lane, Gates Mills, Ohio 44040

RALPH W. NUSSER, *Zeta*, (1946-1948), 609 West Dartmouth, Kansas City, Missouri 64113

NORMAN B. AXES, *Gamma Beta*, (1948-1950)*

DONALD D. CUNTER (Prof.), *Omicron Honorary*, (1950-1952), 114 Allee Street, Clemson, South Carolina 29631

JAMISON VAWTER, *Zeta*, (1952-1954)*

A. DEKSTER HINCXLEY, *Theta*, (1954-1958), 90 Morningside Drive, New York, N. Y. 10027

CHARLES W. BRITZUS, *Alpha*, (1958-1962), 2440 Franklin Avenue, St. Paul, Minnesota 55114

*Deceased

EXECUTIVE COUNCIL

GRAND REGENT WILLIAM K. REY (Prof.), *Mu '45* — P. O. Box 664, University, Alabama 35486

GRAND VICE REGENT C. RAMOND HANES, *Sigma '24*, 581 E. Dominion Blvd., Columbus, Ohio 43214

GRAND SCRIBE ROBERT E. POPE, *Zeta '52* — 13 Sona Lane, Saint Louis, Missouri 63141

GRAND TREASURER CHARLES W. BRITZUS, *Alpha '33*, 2440 Franklin Ave., St. Paul, Minn. 55114

GRAND MARSHAL RICHARD LYNCH, *Epsilon Beta '53*, West Lafayette Towers, Detroit, Mich. 48207

GRAND INNER GUARD C. E. WALES, *Epsilon Beta '53*, 409 W. Stadium, W. Lafayette, Ind. 47906

GRAND OUTER GUARD JAY N. THORPE, *Lambda '57*, 5208 - 119th Ave., S.E., Bellevue, Wash. 98004

DELEGATE-AT-LARGE

PAST GRAND REGENT CHARLES W. BRITZUS, *Alpha '33*, 2440 Franklin Ave., St. Paul, Minn. 55114

CENTRAL OFFICE

ROBERT E. POPE, *Zeta '52*, Executive Secretary — 13 Sona Lane, Saint Louis, Missouri 63141

REGIONAL DIRECTORS

NORTHERN JAMES L. REYNOLDS, *Alpha '58*, Mechanical Engineering Department, University of Minnesota, Minneapolis, Minnesota 55455 (*Alpha, Beta, Xi, Omicron*)

SOUTHERN FRED E. ARMSTRONG, JR., *Mu '61*, The Trane Co., 2257 Highland Avenue, Birmingham, Alabama 35205 (*Zeta, Iota, Mu, Upsilon, Eta Beta, Kappa Beta*)

CENTRAL GEORGE C. DODD (Dr.), *Zeta '60* — 29451 Cunningham Drive, Warren, Michigan 48092 (*Delta, Sigma, Phi, Delta Beta, Epsilon Beta, Iota Beta*)

EASTERN JOHN M. DEALY (Dr.), *Zeta '58*, Department of Chemical Engineering, McGill University, Montreal 2, Quebec, Canada (*Theta, Pi, Rho, Tau, Gamma Beta*)

WESTERN GARN HATCH, *Zeta Beta '56* — 2011 Bryan Avenue, Salt Lake City, Utah 84108 (*Gamma, Epsilon, Lambda, Chi, Psi, Omega, Zeta Beta, Theta Beta*)

SPECIAL APPOINTMENTS

ARCHIVIST MILTON S. WUNDERLICH, *Alpha '79* — 545 Mount Curve Blvd., St. Paul, Minn. 55116

SPECIAL REPRESENTATIVE FOR CALIFORNIA JACK E. PAYNE, *Lambda '62*, 2245 Lanai Avenue, Apt. 60, San Jose, California

CHAPTERS AND CHAPTER ADVISERS

ALPHA	Founded October 15, 1904	University of Minnesota 515 Tenth Avenue, S. E., Minneapolis, Minnesota 55414*
BETA	Adviser: HERMAN E. GOLLWITZER, 2857 Dorman Avenue, Minneapolis, Minn. 55406 Established March 26, 1906	Michigan Technological University U. S. Highway 41, Houghton, Michigan 49931*
GAMMA	Adviser: PROF. HERBERT W. HAWES, Mechanical Engineering Department, Michigan Technological University, Houghton, Michigan 49931 Established November 8, 1907	Colorado School of Mines Box 134, Colorado School of Mines, Golden, Colorado 80401
DELTA	Adviser: DR. L. W. LAROY, Department of Geology, Colorado School of Mines, Golden, Colorado 80401 Established May 23, 1911	Case Institute of Technology Theta Tau Box, Case Institute of Technology, Cleveland, Ohio 44106
EPSILON	Adviser: DR. ROBERT H. SCANLAN, Department of Engineering Mechanics, Case Institute of Technology, Cleveland, Ohio 44106 Established May 4, 1911	University of California Theta Tau, Engineering Research Services Building, University of California, Berkeley, California 94720
ZETA	Adviser: DR. JAMES M. CARMAN, School of Business Administration, University of California, Berkeley, California 94704 Established April 17, 1912	University of Kansas 1002 Louisiana Street, Lawrence, Kansas 66045*
THETA	Adviser: PROF. FREDERICK H. C. SMITHMEYER, 2130 Owens Lane, Lawrence, Kansas 66044 Established May 26, 1914	Columbia University c/o Dean's Office, School of Engineering, Columbia University, New York, New York 10027
IOTA	Adviser: PROF. ROBERT J. COOPER, Director of Student Activities, School of Engineering, Columbia University, New York, New York 10027 Established February 5, 1916	University of Missouri at Rolla Student Union, University of Missouri at Rolla, Rolla, Missouri 65401
LAMBDA	Adviser: PROF. FRANK J. CAPEK, Civil Engineering Department, University of Missouri at Rolla, Rolla, Missouri 65401 Established April 29, 1920	University of Utah Merrill Engineering Building, University of Utah, Salt Lake City, Utah 84112
MU	Adviser: PROF. PRESTON D. LINFORD, Civil Engineering Department, University of Utah, Salt Lake City, Utah 84112 Established January 3, 1922	University of Alabama 300 Thomas Street, Tuscaloosa, Alabama 35401*
XI	Adviser: PROF. WILLIAM K. REY, P. O. Box 664, University, Alabama 35466 Established January 13, 1923	University of Wisconsin Theta Tau Box, Mechanical Engineering Building, University of Wisconsin, Madison, Wisconsin 53706
OMICRON	Adviser: DR. JOHN W. MITCHELL, Department of Mechanical Engineering, University of Wisconsin, Madison, Wisconsin 53706 Established February 3, 1923	University of Iowa Theta Tau Box, Engineering Building, Iowa City, Iowa 52240
PI	Adviser: DR. DONALD H. MADSEN, Engineering Building, Iowa City, Iowa 52240 Established May 26, 1923	University of Virginia Thornton Hall, University of Virginia, Charlottesville, Virginia 22903
RHO	Adviser: DR. GEORGE B. MATTHEWS, Department of Aerospace Engineering, University of Virginia, Charlottesville, Virginia 22903 Established February 16, 1924	North Carolina State University at Raleigh P. O. Box 5282, State College Station, Raleigh, North Carolina 27607
SIGMA	Adviser: DR. FORREST W. LANCASTER, P. O. Box 5367, State College Station, Raleigh, North Carolina 27607 Established November 29, 1924	Ohio State University 1946 Indianola Avenue, Columbus, Ohio 43201*
	Adviser: DR. ROBERT L. CONGRIFF, Department of Electrical Engineering, Ohio State University, Columbus, Ohio 43210	

THE GEAR OF THETA TAU

- TAU** Established December 12, 1925 _____ Syracuse University
Theta Tau Box, College of Engineering, Syracuse University, Syracuse, N. Y. 13210
Adviser: PROF. CARSON P. BUCK, Associate Dean, College of Engineering, Syracuse University, Syracuse, New York 13210
- UPSILON** Established April 7, 1928 _____ University of Arkansas
763 West Dickson Street, Fayetteville, Arkansas 72701*
Adviser: PROF. JAMES F. AKEN, Mechanical Engineering Department, University of Arkansas, Fayetteville, Arkansas 72701
- PHI** Established April 21, 1928 _____ Purdue University
416 North Chauncey Avenue, West Lafayette, Indiana 47906*
Adviser: PROF. JOSEPH C. OFFENLANDER, Department of Civil Engineering, Purdue University, West Lafayette, Indiana 47906
- CHI** Established April 23, 1930 _____ University of Arizona
840 East Fourth Street, Tucson, Arizona 85719*
Adviser: PROF. PHILIP B. NEWLON, Civil Engineering Department, University of Arizona, Tucson, Arizona 85719
- PSI** Established May 7, 1932 _____ Montana College of Mineral Science & Technology
Theta Tau, Residence Hall, Montana College of Mineral Science & Technology, Butte, Montana 59701
Adviser: PROF. WILLIAM J. VAN MATRE, Department of Mining Engineering, Montana College of Mineral Science & Technology, Butte, Montana 59701
- OMEGA** Established March 20, 1932 _____ South Dakota School of Mines and Technology
107 Kansas City Street, Rapid City, South Dakota 57701*
Adviser: PROF. WILLIAM V. COYLE, Civil Engineering Department, South Dakota School of Mines, Rapid City, South Dakota 57701
- GAMMA BETA** Established March 16, 1935 _____ The George Washington University
Theta Tau, Davis-Hodgkins House, 731 - 22nd Street, N.W., Washington, D. C. 20006
Adviser: PROF. CARL H. WALTHER, School of Engineering and Applied Science, The George Washington University, Washington, D. C. 20006
- DELTA BETA** Established May 20, 1939 _____ University of Louisville
2022 South First Street, Louisville, Kentucky 40208*
Adviser: PROF. MILKES G. NORTON, Electrical Engineering Department, University of Louisville, Louisville, Kentucky 40208
- EPSILON BETA** Established May 19, 1951 _____ Wayne State University
1200 West Hancock, Detroit, Michigan 48201*
Adviser: DR. HAROLD G. DONNELLY, Chemical and Metallurgical Engineering Department, Wayne State University, Detroit, Michigan 48201
- ZETA BETA** Established May 7, 1960 _____ Utah State University
Box 254, Union Building, Utah State University, Logan, Utah 84321
Adviser: DR. REYNOLD K. WATKINS, Mechanical Engineering Department, Utah State University, Logan, Utah 84321
- ETA BETA** Established May 13, 1961 _____ University of Houston
815 Kipling Street, Houston, Texas*
Adviser: PROF. WILLIAM J. LEACH, Assistant Dean, Cullen College of Engineering, University of Houston, Houston, Texas 77004
- THETA BETA** Established March 2, 1963 _____ University of Washington
Box 171, Student Union Building, University of Washington, Seattle, Wash. 98105
Adviser: ROY A. MCCREARY, 16311 Southeast Second, Bellevue, Washington
- IOTA BETA** Established February 15, 1964 _____ University of Detroit
Theta Tau, University of Detroit, Detroit, Michigan 48221
Adviser: _____
- KAPPA BETA** Established November 21, 1964 _____ Mississippi State University
P. O. Box 2983, State College, Mississippi 39762
Adviser: PROF. CLAUD J. IRBY, JR., Box 161, State College, Mississippi 39762
- COLONY**
- GMI** Certified September 25, 1965 _____ General Motors Institute
Theta Tau Colony, General Motors Institute, 1700 West 3rd Avenue, Flint, Michigan 48502
Adviser: PROF. JAMES B. BAY, 3202 Briarwood Drive, Flint, Michigan 48507

* Chapter house

INTERIM COMMITTEES, 1965-1966

ALUMNI AFFAIRS—C. R. HANES, *Chairman*, 581 East Dominion Boulevard, Columbus, Ohio 43214; JOHN HAKALA, 36318 Winterset, Mt. Clemens, Michigan 48043; LEON M. VICK, Jr., 1437 Beaumont Drive, Montgomery, Alabama 36106

CONSTITUTION REVISION—DR. JOHN M. DEALY, *Chairman*, Department of Chemical Engineering, McGill University, Montreal 2, Quebec, Canada

CONVENTION PLANNING—ROBERT E. POPE, *Chairman*, 13 Sona Lane, Saint Louis, Missouri 63141

CURRICULAR ELIGIBILITY—DR. CHARLES E. WALES, *Chairman*, 409 West Stadium, West Lafayette, Indiana 47906

EXTENSION—ROBERT E. POPE, *Chairman*, 13 Sona Lane, Saint Louis, Missouri 63141; WILLIAM A. McCULLOCH, 1421 Cambridge Place, Apt. 30, Manhattan, Kansas 66502; JAMES E. SCHNABER,

2012 West Ash, H9 Town & Campus, Columbus, Missouri 65202

FINANCE—CHARLES W. BRITZBUS, *Chairman*, 2440 Franklin Avenue, Saint Paul, Minn. 55114; HERMAN H. HOPKINS, 3320 Culver Avenue, Evanston, Ill. 60201; RICHARD LYNCH, West Lafayette Towers, Apt. 1804, Detroit, Mich. 48207; PAUL L. MENCHER, P.O. Box 487, Keokuk, Iowa 52632

HISTORY—DR. JOHN M. DEALY, *Chairman*, Department of Chemical Engineering, McGill University, Montreal 2, Quebec, Canada; DWIGHT D. ZECK, 4817 Sheboygan Avenue, Apt. 601, Madison, Wisconsin 53705

RITUAL REVISION—DR. GEORGE G. DODD, *Chairman*, 29451 Cunningham Drive, Warren, Michigan 48092

SCHRAEDER AWARD—DR. CHARLES E. WALES, *Chairman*, 409 West Stadium, West Lafayette, Indiana 47906; JAMES T. DIXON III, Apt. 1, 2608 East Monte Cristo Street, Phoenix, Arizona 85012

PRESIDENTS AND SECRETARIES OF ALUMNI ASSOCIATIONS

CENTRAL JAMES ANDERSON, *President*, 54 East Royal Forest Blvd., Columbus, Ohio 43214
FREDERICK TOMAZIC, *Secretary*, 554 Riverview Drive, Columbus, Ohio

CHICAGO ALF T. SWANSON, *President*, 479 Winchester Road, Chicago Heights, Ill. 60411

CLEVELAND JAMES R. McKINNEY, *President*, 3853 Kirkwood Road, Cleveland, Ohio 44121
CALVIN DALTON, *Secretary*, The Arcade, Cleveland, Ohio 44114

DETROIT RUSSELL HOLMES, *President*, 27236 Hustington Drive, Warren, Michigan 48093
EDMOND VAN ELSLANDER, *Secretary*, 3423 Fall Drive, Warren, Michigan 48092

INTERMOUNTAIN CLAYTON H. KIMBALL, *President*, 1193 S. 19th E., Salt Lake City, Utah 84106

K. S. GREENE, *Secretary*, 1230 South Twentieth East, Salt Lake City, Utah 84108

KANSAS CITY DAVID E. SHAAD, *President*, 5016 Johnson Drive, Shawnee Mission, Kansas
RONALD W. BONDJOCH, *Secretary*, 5507 W. 78th Terrace, Prairie Village, Kansas

METROPOLITAN NEW YORK DON MACLAREN, *President*, 994 Oakland Avenue, Plainfield, New Jersey 07060

JOSEPH R. MCCORMICK, *Treasurer*, 243 West Hazelwood Avenue, Railway, N. J. 07065

NATIONAL CAPITAL PAUL KUEZO, *President*, 3601 Van Ness Street, N.W., Washington, D.C. 20008

HERBERT S. WILKINSON, *Secretary*, 4743 Bradley Boulevard, Bethesda, Maryland

NORTH ALABAMA (Club) LEON M. VICK, Jr., *President*, 417 Julia Street, N.W., Apt. 111, Huntsville, Alabama 35805

CHARLES H. HASKER, *Secretary*, 3505 Cayman Road, S.W., Huntsville, Alabama 35805

PACIFIC NORTHWEST GEORGE J. MILLER, *President*, 1226-22nd Avenue East, Seattle, Washington 98102

J. DELEVIN ARMSTRONG, *Secretary*, 16504 N.E. 13th, Bellevue, Washington

SOUTHWESTERN JOHN F. RAUSCHER, *President*, 510 E. Saburo, Tucson, Arizona

A. EARL HAMILTON, *Secretary*, 4808 East Bellevue Avenue, Tucson, Arizona 85719

TWIN CITY ALEX KOVALCHUK, *President*, 10708 27th Avenue South, River Hills, Burnsville, Minnesota 55378

JOHN E. TUNNEY, *Secretary*, 2460 Gettysburg Avenue South, Minneapolis, Minnesota

WISCONSIN (Club) DR. SHEPHERD D. ANSELL, *President*, 510 Cedar Street, Madison, Wisconsin 53715

DONALD STUCKMEYER, *Secretary*, 1122 West Badger Road, Madison, Wisconsin 53715

Errata

In the Fall 1965 *GEAR*, the article on our colony at GMI obviously should have said on page 2: "Students at GMI spend their first four years in alternating six-week periods of study at the Institute and work in a unit of General Motors." Would you believe we do know the difference between General Motors and General Electric? On page 25 Brother Rene J. Mechin was included under the Columbia Alumni Notes; he is a proud graduate of Colorado School of Mines. In the Chapter News section, Sigma Chapter was incorrectly shown located at Cleveland, Ohio. For these and other mistakes yet unnoticed, we can only say "sorry about that"—most sincerely.

Fraternities--Not A Lonely Crowd

It has become old news to suggest that fraternities must adapt to the changing university and campus conditions. Just as those of us in the "real world" adapt to change, so too is the fraternity chapter adapting itself to its environment--not without a certain amount of reflection and protest, of course. But change always brings on a period of reevaluation and redefinition of purposes.

This is not the day when fraternities will disappear, however, despite some real problems. This is the day of the ten-story, 1000-man dorms, the impersonal IBM card administration of student schedules, and the flood of students surging to the campus. There are too many students who will testify that they are lonely and desperate in those dorms and feel their individuality is crushed in the mass of humanity -- the Lonely Crowd, as David Riesman called it. Too many students will say that no one

cares about them as persons, that it is impossible to be an individual recognized for his own worth.

But the fraternities quietly serve the function they always have. The individual is recognized, is developed professionally, morally, and socially, and can identify himself closely with people who care about him personally. Whether he is in academic difficulty or is working out some of his personal values in life, the fraternity is a place apart from the pressures of school and the overwhelming numbers of people. There, friends are real, they will help when needed, and will draw out one's best performance.

As long as fraternities and sororities recognize each person as an individual, they will be on campus, serving a vital function for the student members.

—WEF

Theta Tau Authors Being Sought

Theta Tau has started a collection of books written by members of the Fraternity. Several of these books have already been obtained. Have you written a book, or do you know a member of Theta Tau who has? If so, please drop a note to Executive Secretary Robert E. Pope.

Many Theta Taus have been pictured on the covers of national magazines. The Fraternity is collecting and preserving these also. When writing to Brother Pope about these, please give the name of the publication and the date so we may try to obtain a copy of it.

We salute these Chapters which are celebrating important anniversaries this year!

Beta Chapter	60th	March 26
Delta Chapter	55th	May 23
Epsilon Chapter	55th	May 4
Iota Chapter	50th	February 5
Epsilon Beta Chapter	15th	May 19
Eta Beta Chapter	5th	May 13

ALUMNI NEWS

THE GEAR needs news about you and other alumni. Include promotions, job changes, professional honors, family news. Send to THE GEAR OF THETA TAU, 7469 Village Drive, Shawnee Mission, Kansas 66208.

Name _____ Chapter _____ Class _____
Year _____

Address _____

News of yourself and/or others _____

NOTICE OF DECEASED MEMBER

Please give as complete information as possible, including biographical data known, clippings, etc. Send to THE GEAR OF THETA TAU, 7469 Village Drive, Shawnee Mission, Kansas 66208.

Name _____ Chapter _____ Class _____
Year _____

Address _____

Date and place of death _____

Name and address of nearest relative _____

Reported by _____ Chapter _____

Address _____

Relationship to deceased _____

RECOMMENDED STUDENTS

Mail to Robert E. Pope, Executive Secretary, 13 Sona Lane, St. Louis, Missouri 63141. Include relatives and other recommended students at accredited schools whether or not Theta Tau yet has a chapter at that school.

I recommend that the following student(s) in engineering be considered for Theta Tau membership:

Name _____ School _____

Mailing Address _____ Major _____

Expected Graduation Date _____

Remarks:

Signed _____ Chapter _____ Year _____

CHANGE OF ADDRESS NOTICE

Send to THE GEAR OF THETA TAU, 7469 Village Drive, Shawnee Mission, Kansas 66208.

Name _____ Chapter _____ Class _____
Year _____

Old address:

Street _____

City _____ State _____ ZIP Code _____

New address:

Street _____

City _____ State _____ ZIP Code _____

Permanent address from which mail will always be forwarded to you:

Street _____

City _____ State _____ ZIP Code _____

NOTICE OF ALUMNUS ADDRESS

Send names and addresses of any alumni you know who may not be receiving THE GEAR to THE GEAR OF THETA TAU, 7469 Village Drive, Shawnee Mission, Kansas 66208.

Name _____ Chapter _____ Class _____
Year _____

Street _____

City _____ State _____ ZIP Code _____

Reported by _____ Chapter _____ Class _____
Year _____

Street _____

City _____ State _____ ZIP Code _____

Be sure the Theta Taus you know are receiving THE GEAR.

GIFTS TO THETA TAU

Make checks payable to Theta Tau Fraternity and mail to Robert E. Pope, Executive Secretary, 13 Sona Lane, St. Louis, Missouri 63141.

I enclose the following contribution to Theta Tau:

As an unrestricted gift \$ _____

For the Founders' Memorial Fund \$ _____

Name _____ Chapter _____ Class _____
Year _____

Street _____

City _____ State _____ ZIP Code _____

JEWELRY AVAILABLE THROUGH CENTRAL OFFICE



OFFICIAL JEWELRY:

Badge with close set pearls (Row three, right)	\$ 9.50
Badge with crown set pearls	13.00
Sister pin with close set pearls (Row three, left)	12.25
Sister pin with crown set pearls	13.75
Pledge button (Row two, left)	0.75
Pledge pin	1.00
Official recognition button (Top row, left)	1.00

OTHER JEWELRY:

Greek letter recognition button (Top row, center)	1.25
Coat of arms recognition button (Top row, right)	1.25
Alumna charm (Bottom row, left)	3.50
Award key, gold plated (Bottom row, right)	5.50
Award key, 10K gold	7.25
Colony pin (Row two, right)	1.25
Founders' size coat of arms (Plain or with ring at top)	1.75
Bronze or nickel	2.00
Sterling silver or gold plated	3.75
1/20-10k yellow gold filled	18.00
10k yellow gold	

Prices do not include state and local sales and use taxes.

Official jewelry may be ordered only through the Theta Tau Central Office, 13 Soma Lane, St. Louis, Missouri 63141.

THE GEAR OF THETA TAU
7469 Village Drive
Shawnee Mission, Kansas 66208

Return Requested

Non-Profit
Bulk Rate
U. S. POSTAGE
PAID
Lawrence, Kansas
Permit No. 116

Robert E. Pope Z 539
13 Sona Lane
Saint Louis 41, Missouri 63141

MAY 26 1966