

FALL 1966  
VOLUME LVI  
NUMBER 1



**The GEAR**  
**of THETA TAU**

## **THE EXECUTIVE COUNCIL**

has authorized a formal plan for

### **VOLUNTARY CONTRIBUTIONS TO THETA TAU FRATERNITY**

by its alumni and other interested persons. These contributions may be by periodic or occasional gifts or bequests.

Specifically, persons may contribute to a "Founders' Memorial Fund" or give "unrestricted gifts." Funds contributed to the Founders' Memorial Fund are to be invested in securities (stocks, bonds, and mortgages) with preference to be given to loans to Theta Tau house corporations for the purpose of building, buying, remodeling, or furnishing chapter houses. One-half of the return on invested funds will be reinvested, and the other one-half will be used as directed by the Trustees (Executive Council). These gifts are not deductible for income tax purposes. Unrestricted gifts will be used in the operation or promotion of Theta Tau Fraternity as directed by the Trustees.

No minimum amount has been set, and all gifts are welcome. The form on page 52 is provided for those interested.

### **BEQUESTS TO THETA TAU**

Bequests to Theta Tau may be made using the following suggested form:

"I give, devise, and bequeath to Theta Tau, national professional engineering fraternity, with its Central Office located at 13 Sona Lane, St. Louis, Missouri 63141, \$\_\_\_\_\_ (or 'the following described property, or securities'), as an unrestricted gift (or 'as a contribution to its Founders' Memorial Fund')."



# The Gear of Theta Tau

FALL 1966

VOLUME LVI NUMBER 1

## Board of Editors

WILLIAM E. FRANKLIN, *Editor-in-Chief*

J. W. HOWE

## Contents

In Memoriam: Donald D. Curtis	2
Twenty-Sixth Biennial Convention Plans	3
Six Theta Tau Publications Issued	4
Pope Elected Treasurer of PIC	4
Alumni Club Organized in Arkansas	5
Central Florida Alumni Club Formed	5
Comments from the Central Office	6
Our Library Now Holds 24 Books	6
Alumni Helping Tau Chapter	7
Alumni News	8
<i>Dr. Van Horn is Leader in Light Metal Science</i>	8
<i>William C. Gribble is Now a Major General</i>	9
<i>Ellenberger is Active in Washington, D.C.</i>	9
<i>Bernard Rocca is Leader in Vegetable Oil Industry</i>	10
<i>Thomas Linville Heads Professional Engineers</i>	11
<i>Learned is Honored at University of Kansas</i>	12
<i>Anderson is Texas Engineer of the Year</i>	13
<i>Prof. Walther Advances at George Washington U.</i>	14
<i>Dr. Lampe Retires Again as Engineering Dean</i>	15
In Memoriam	16
Historical Items Sought	18
Alumni Notes	19
Contributors to Theta Tau Progress	34
25 and 50 Years Ago in Theta Tau	35
Chapter News	36
Additions to Membership	43
Letter to the Editor	46
Theta Tau Directory	47

*Cover: Each year Zeta Chapter builds the archway for the Engineering Exposition at the University of Kansas. This year's effort is shown in front of the new engineering building, Learned Hall, named for Stanley Learned, Kansas '24. (See page 12.)*

*Photo credits: Cover, Alan Abell; page 3, University of Minnesota; page 8, Aluminum Company of America; page 9, U.S. Army; page 10, Moulin Studios; page 11, White Studio; page 13, "Duke" D'Ambra.*

● THE GEAR is the official publication of Theta Tau, national professional engineering fraternity. It is published fall and spring. The magazine is devoted to matters of Fraternity interest and is sent at no cost to alumni whose addresses are on record at THE GEAR office. ● Send change of address, editorial, and business correspondence to the Editor-in-Chief, William E. Franklin, 7421 Village Drive, Prairie Village, Kansas 66208. ● THE GEAR is printed by Allen Press Inc., Lawrence, Kansas. Third class postage has been paid at Lawrence, Kansas.

## In Memoriam: Donald D. Curtis

PROF. DONALD D. CURTIS, *Omicron Honorary '19*, Past Grand Regent, entered the ranks of departed leaders of Theta Tau on October 19, 1966 at Clemson, South Carolina. He served Theta Tau as an officer for 28 years, beginning as Editor in 1926, through 21 years as Grand Marshal, and highlighted by his tenure as Grand Regent from 1950 to 1952.



**Donald Dexter Curtis**  
1896-1966  
Grand Regent, 1950-1952

Brother Curtis was born in Greene, Iowa on May 31, 1896. He took his first degree at the University of Iowa in 1919, and began his career as a rodman and transitman for the C.C.C. & St. L. Railway. He was then a designer for the Canfield Engineering Company of Des Moines, Iowa.

In 1921 Brother Curtis returned to the University of Iowa as an instructor and later as an assistant professor of mechanics and hydraulics. He was awarded his M.S. degree there in 1931, and also did graduate work at the University of Washington.

He was initiated into Omicron Chapter of Theta Tau in 1925 as an honorary member, and only a few months after his initiation he was appointed Editor of *THE GEAR OF THETA TAU*. He reorganized publication of the magazine and established the file system which, in essence, is still used today.

In 1927 Brother Curtis was elected Grand Marshal and he served in this position until 1948. During that time he issued 8,000 shingles—a Theta Tau record. In 1950 he was elected Grand Regent, and he signed an additional 1,000 shingles during that time. During his long service to Theta Tau, Brother Curtis attended 13 Conventions, made dozens of chapter visits, and helped to install five chapters. In 1956 the Fraternity honored him by naming its Twenty-First Convention "The Donald D. Curtis Convention."

Brother Curtis left Iowa in 1929 to become professor of mechanics and hydraulics at Clemson College. He served on the Clemson faculty for 32 years, retiring in 1961. At that time he was presented a citation and a certificate bestowing on him two titles: head emeritus of the Department of Engineering Mechanics, and professor emeritus of engineering mechanics.

In addition to his teaching, he had served as a special consultant in hydraulics and math for the Tennessee Valley Authority.

A man of many and varied interests, Brother Curtis was a member of Tau Beta Pi, Sigma Xi, Phi Kappa Phi, the American Society of Civil Engineers, the American Geophysical Union, the American Society for Engineering Education, the South Carolina Society of Engineers, the Masons, the Golf and Country Club, and the Terpsichorean Fellowship. His hobbies included genealogy, writing, photography, hunting, reading, and music.

Brother Curtis married Evalyn Gager in 1922, and they had one son, Don Gager Curtis. His wife and son survive him.



# Twenty-Sixth Biennial Convention Plans

The Twenty-Sixth Biennial Convention of Theta Tau will be held in Minneapolis, Minnesota, December 27 to 30, 1966. Members will be returning to the place of Theta Tau's founding, as well as the site of the Fraternity's first Convention and the Founders' Golden Anniversary Convention.

Headquarters for the Convention will be the Normandy Motor Hotel, which is owned by John F. Noble, *Minnesota '20*. Chapters and Alumni Associations will be sending voting delegates, but all members are invited and urged to come. Alumni are encouraged, but not required, to make reservations with the Theta Tau Central Office in advance. Founders and Past Grand Regents will be especially invited to attend, and Founder Lewis has already indicated that he will be there.

Alpha Chapter and the Twin City Alumni Association are co-hosts for the Convention. The host committee includes: Art Brandli, Alpha Regent, chairman; Terry Lee; Craig Frane; Chuck Van Horsen; Chuck Anderson; Carl Strunk; Mike Vitek; and Bill Carlson, *Minnesota '64*. James L. Reynolds, Northern Regional Director, is providing liaison between the Host Committee and the Central Office.



The mall of the University of Minnesota

An abbreviated schedule for the Twenty-Sixth Biennial Convention is listed below.

## **Tuesday, December 27**

Registration, presentation of credentials  
Committee meetings  
Opening dinner  
First Convention Session

## **Wednesday, December 28**

Second Convention Session  
Ritual Workshop  
Tour of University of Minnesota campus  
Luncheon  
Third Convention Session  
Chapter Officer Workshop  
Fourth Convention Session  
Memorial Service  
Dinner  
Committee meetings

## **Thursday, December 29**

Fifth Convention Session  
Regional luncheons  
Sixth Convention Session  
Initiation Ceremony  
Reception  
Convention Banquet

## **Friday, December 30**

Final Convention Session  
Installation of new Executive Council



The Normandy Motor Hotel

## Six Theta Tau Publications Issued

Six publications have been scheduled or released by the Theta Tau Central Office, including one new manual.

*Theta Tau on Your Campus* is a booklet directed to engineering students at schools where Theta Tau does not have chapters. It contains general information about Theta Tau, professional fraternities, and student membership. It is a brief but informative introduction to Theta Tau and makes effective use of illustrations.

*Theta Tau* is a companion booklet to *Theta Tau on Your Campus*. It was written primarily for faculty members at schools where Theta Tau does not have chapters. Some chapters have used it for rushing purposes, also.

Three manuals for the chapters were released in November 1966. *This is Theta Tau* is a booklet to be used in the rushing programs of the chapters. It gives general information about Theta Tau. Each chapter is encouraged to supplement the booklet with its own material to give detailed information about the local chapter and its customs and operations.

*The Pledge and Membership Manual* is designed to serve a man from pledgeship

through his student member days. It covers a broad range of Theta Tau customs, historical data, and membership privileges and obligations. In addition to giving the man a broad look at the Fraternity, a part of the manual is devoted to the local chapter and its customs and operations.

A new social customs manual, *The Engineer is a Gentleman*, has been issued to the chapters. It is an outgrowth of personal and public relations training which several chapters have used for many years. The booklet covers such subjects as etiquette, table manners, hospitality, letter writing, telephone usage, and relations with the housemother.

In December the completely revised *Chapter Officers Manual* will be released. It is a combination of a previous officers' manual and a rushing and pledge training manual. Its purpose is to give guidance and direction to all chapter officers and to the chapter adviser. It does not cover the Constitutional requirements made of each elective officer, but takes up where the Constitution leaves off. It provides operational guidance to the officers who are responsible for the operation of the local chapter.

## Pope Elected Treasurer of PIC

The Professional Interfraternity Conference met in St. Louis, Missouri May 13, 14, and 15, 1966. Theta Tau was represented by William K. Rey, Grand Regent; Charles W. Britzius, Grand Treasurer and Past Grand Regent; and Robert E. Pope, Grand Scribe and Executive Secretary. Twenty-one member fraternities from 11 professional fields were present at the conference.

Through exhibits, officers' reports, and panel discussions, the professional fraternities discussed their mutual goals and problems. Brother Pope represented Theta Tau on a panel which discussed the leadership role of the national organization.

Officers elected for the coming biennium were: president, Dr. C. H. William Ruhe,

Phi Rho Sigma (medicine); president-elect, Dr. Robert J. Beals, Sigma Phi Delta (engineering); vice president, Joseph G. Maddox, Sigma Delta Kappa (law); secretary, Dr. William E. Koch, Jr., Xi Psi Phi (dentistry); treasurer, Robert E. Pope, Theta Tau (engineering); Executive Committee, Meredith M. Daubin, Delta Theta Phi (law); Dr. Conrad E. Blomquist, Phi Delta Chi (pharmacy); Dr. E. Marshall Carson, Xi Psi Phi (dentistry); and Price Doyle, Phi Mu Alpha Sinfonia (music). Brother Pope has served on the Executive Committee during a previous biennium.

Theta Tau was a founding member of the Professional Interfraternity Conference in 1928.

## Alumni Club Organized in Arkansas

by Carl Gibbons, Arkansas '65

The evening of June 14, 1966, several student members and alumni of Upsilon Chapter met in Little Rock, Arkansas to determine if an alumni club for Arkansas were feasible, and if so, to actually take the first steps toward organizing one.

With alumnus Jim Womble acting as temporary chairman, the meeting was called to order. Gus Vratisnas reviewed the Constitutional requirements for an alumni club and Carl Gibbons related some background information concerning population density of alumni, possible benefits and rewards which alumni could derive from such an organization, and some activities in which the club might involve itself. A motion to organize an Alumni Club was quickly adopted, a set of Bylaws drafted, and finally the first slate of officers was elected.

Joe Gillespie, *Arkansas '49*, is now serving as president. He has shown an active interest in the Fraternity since his graduation, and we are quite pleased to have him at the helm during this formative period. Jim Womble, *Arkansas '66*, is vice president,

Carl Gibbons, *Arkansas '65*, is secretary, and John Harton, *Arkansas '64*, is treasurer.

The purposes of the club are to promote fraternal fellowship and professional interest, to welcome alumni new to the area, and to further the interests of the Fraternity. As for meetings, our Bylaws call for semi-annual meetings to be held in Fayetteville and Little Rock. These will be the formal assemblies. We hope that in addition there will be numerous informal local gatherings among our men just for the sake of getting together and strengthening the bonds which we all enjoyed as student members of Theta Tau.

The officers of the club are presently contacting alumni to inform them of the club's beginning and to invite them to participate in its activities. Letters have been sent to those for whom we have addresses, but the list is far from complete. Alumni living in or near Arkansas who would like further information are urged to contact the secretary at the address listed in the Directory Section of *THE GEAR*.

## Central Florida Alumni Club Formed

by J. C. Spencer, South Dakota Mines '59

The first official meeting of the newly-formed Central Florida Alumni Club of Theta Tau was held September 16, 1966. The officers of the new club are: Gordon Davison, President; James Gibboney, Vice President; Bernard Buell, Treasurer; and Joseph Spencer, Secretary.

Founders' Day this year was celebrated by a dinner-dance held in Orlando, Florida. Tentative plans are being made for a com-

bination meeting and family picnic in December. Plans are being made to participate in local (Orlando) activities during the Engineers' Week. Participation in local high school Career Day activities is also being planned.

The new club extends throughout Central Florida from coast-to-coast. We invite all brothers located in this area to participate in our activities.

## Comments from the Central Office

Increased alumni involvement in the affairs of our Fraternity has characterized the biennium now drawing to a close.

Most notable has been the establishment of four new alumni clubs in various sections of the nation. But there are other ways, too, in which alumni have been involved to an extent not previously experienced.

Some alumni are not just suggesting potential chapter sites, but are also working with interested students at these schools toward the establishment of new chapters. Our first colony resulted from such interest by an alumnus.

Two chapters are occupying houses for the first time this fall, and another one has moved into a better house. Other chapters are at work on plans for improved housing in the near future. Such achievements are possible only through alumni support and cooperation.

Voluntary financial support from alumni, coupled with improved practices, has resulted in deficit-free operation of the national Fraternity, and extended services to members.

Distinguished alumni have helped us to



obtain autographed copies of books by Theta Taus for our Fraternity Library, and copies of nationally circulated magazines featuring cover pictures of Theta Tau members for the Archives.

As a result of a continued effort to locate and reach all alumni, THE GEAR is now at record high circulation, going free to every alumnus whose address is known to the national Fraternity.

To all who have contributed to Theta Tau progress, in these and other ways, we extend our fraternal thanks.

Beginning December 27, in Minneapolis, Theta Tau's Twenty-Sixth Biennial Convention will provide an opportunity for increased participation in Fraternity affairs by all alumnus and student members attending. The Convention Banquet on Thursday evening, December 29, will be an especially fine occasion which no alumnus in the area should miss. Further Convention details will be found elsewhere in this issue. Don't miss this chance to enjoy fellowship with members from across the nation whose initiation dates span 62 years of Theta Tau history.

ROBERT E. POPE

## Our Library Now Holds 24 Books

In the last GEAR we appealed to our members to tell us of books written or edited by Theta Taus. Several did so and we now have copies of these books in the Central Office.

The search continues! If you have authored a book or know of a Theta Tau who has, let us know about it. (Central Office address is 13 Sona Lane, St. Louis, Missouri 63141.) We are also seeking magazine covers which feature Theta Taus, especially nationally circulated magazines. A number of these are now on hand also.

The books we have are:

- Baer, Charles J.—*Electrical & Electronics Drawing*
- Banchero, Julius T. (and Badger)—*Introduction to Chemical Engineering*
- Berkner, Lloyd V.—*The Scientific Age: The Impact of Science on Society*
- Rockets and Satellites
- Bolz, Harold A., Editor (and Hagemann)—*Materials Handling Handbook*
- Buck, Carson P. and Walsh, Gerald W., Jr. (and Hammond, Rogers, and Ackert)—*Engineering Graphics*
- Buck, Carson P. (and Turner and Ackert)—*Basic Engineering Drawing*

- Chammah, Albert M. (and Rapoport)—*Prisoner's Dilemma*  
 Jarman, W. Maxey—*O Taste and See A Business Man Looks at the Bible*  
 LeMay, Curtis E. (and Kantor)—*Mission with LeMay*  
 Moody, Graham B., Editor—*Petroleum Exploration Handbook*  
 Murphy, Raymond B.—*The American City: An Urban Geography*  
 Neubauer, Loren W. (and Walker)—*Farm Building Design*  
 Persson, John A. (and Paschkis)—*Industrial Electric Furnaces & Appliances*  
 Quarles, Lawrence R. (and Breazeale)—*Lines, Networks & Filters*  
 Ramo, Simon (Editor)—*Peacetime Uses of Outer Space*  
 Ramo, Simon (and Whinnery and Van Dazer)—*Fields and Waves in Communication Electronics*  
 Rhodes, Donald R.—*Introduction to Monopulse*  
 Rocca, Bernard T., Sr.—*Fitting in the Pieces Fact, Faith and Reason*  
 Stiles, William B. (and Higdon and Ohlsen)—*Mechanics of Materials*  
 Stiles, William B. (and Higdon)—*Engineering Mechanics* (1955)  
 Stiles, William B. (and Higdon)—*Engineering Mechanics, Vector Edition* (1962)  
 Van Horn, Kent R. (and Case)—*Aluminum in Iron and Steel*

## Alumni Helping Tau Chapter

by George E. Fox, Tau '67

During the summer Tau Chapter instituted an alumni organization. This organization is modeled after Zeta Cogs and was named Tau Cogs. Its purpose is to help obtain and maintain a house for Tau.

Membership is restricted to Tau alumni and student members. The dues are a minimum annual donation of five dollars. All memberships are arranged to expire on October 15, Founders' Day. Each member receives a membership card, and organization news and reports will be printed in the annual Newsletter.

Financially the program should be a low overhead, high profit organization. The chapter budget provides for the Newsletter, membership cards need be printed only occasionally, and renewals and new mem-

berships may be solicited via the Newsletter. So far the program has been moderately successful. The net result has been a 58% increase in our alumni fund in three months. Hopefully, an annual membership between 30 and 60 can be obtained in a few years.

From a practical point of view, these contributions alone will never build a house, but the presence of some funds will be helpful. Even if we obtain a university cottage (we currently have a good chance of doing this), unforeseen minor expenses (such as legal fees) might occur. Certainly, once a house is obtained repairs will be required. Thus, Tau alumni are helping to give future brothers what they themselves were never able to realize.

### REPLACEMENT SHINGLES

Alumni and student members: You may obtain a replacement "shingle" through the Central Office if your original has been lost or if you have changed your name. The cost is \$1.25. Direct all requests to Robert E. Pope, Executive Secretary, 13 Sona Lane, Saint Louis, Missouri 63141.





## Alumni News

---

### Dr. Van Horn is Leader in Light Metal Science



DR. KENT R. VAN HORN, *Case '26*, vice president in charge of research and development for Aluminum Company of America, is one of the nation's outstanding scientists in the light metals field.

Following his graduation from Case, Brother Van Horn went to Yale University, where he earned his M.S. and Ph.D. degrees. He joined Alcoa as a research metallurgist at Cleveland in 1929. He advanced there until 1950, when he became associate

director of research in New Kensington, Pennsylvania. He was elected vice president in 1962.

Brother Van Horn is responsible for the application of X-ray diffraction and radiographic methods to plant metallurgical problems, and he has worked closely with the steel industry in the use of aluminum in its processes. He also has made major contributions to present-day forging alloys and processes. He has written numerous technical papers and two metallurgical textbooks.

Last year Brother Van Horn became the seventh person and the first American to receive the Sainte-Claire Deville Medal from the Societe Francaise de Metallurgie. The medal was established to recognize important contributions to nonferrous metallurgy. He has received the Alumni Achievement Award and an honorary doctor of science degree from Case.

Brother Van Horn is a member of the American Society for Metals and was the youngest man ever to be elected president of the society. He is a past president of the American Industrial Radium and X-Ray Society, and a member of AIME, American Society for Testing Materials, the British Institute of Metals, and many councils and advisory committees.

In 1952 he was the Institute of Metals lecturer of the AIME; in 1954, the Campbell Memorial lecturer of the ASM; and in 1957, the Mehl Honor lecturer of the Society for Non-Destructive Testing.

Brother Van Horn and his wife live in Pittsburgh, Pennsylvania. They are the parents of two sons.



## William C. Gribble is Now a Major General

MAJOR GENERAL WILLIAM C. GRIBBLE, JR., *Michigan Tech '41*, became deputy chief of research and development, Headquarters, Department of the Army, on April 4, 1966. He had been director of research and development. The Army's research program includes such major projects as the Nike-X missile system, an advanced aerial fire support system and laser research.

After attending Michigan Tech for three years, Brother Gribble entered West Point, where he graduated in 1941 and was commissioned a second lieutenant. He went to Vancouver, Washington, and then served with the 40th Engineers during construction of the Alaskan Highway.

Brother Gribble attended the Command and General Staff School at Fort Leavenworth in 1943. Upon graduation he rejoined the 340th Engineers and served as executive officer of the unit in the New Guinea and Luzon campaigns.

After World War II he reported to the U.S. Army Engineer District, Chicago. He attended the University of Chicago, receiving his master's degree in 1948. He then served as a metallurgical engineer with the Los Alamos Scientific Laboratory, New Mexico.

From 1953 to 1956 Brother Gribble was deputy assistant director, Reactor Development Division, U.S. Atomic Energy Commission, Washington, D.C. From 1956 to 1960 he served with the U.S. Army Engineer District in Alaska, then he attended the National War College. He served as chief of the Army Nuclear Power Program and later



as deputy director of military construction in the Office of the Chief of Engineers from 1961 to 1963.

He served briefly as division engineer at Chicago in 1963, then returned to Washington to advance to his present position.

Brother Gribble is a member of Tau Beta Pi, the American Ordnance Association, the SAME, and the Association of the U.S. Army. He has been awarded the Army Commendation Medal and the Legion of Merit Medal.

## Ellenberger is Active in Washington, D. C.

WILLIAM J. ELLENBERGER, *George Washington '30*, is chief of the public works planning branch of the Office of the Deputy Chief of Staff, Logistics, in the Department of the Army. His office is responsible for developing the Army's annual military con-

struction program. Brother Ellenberger has long been active in engineering activities in the Washington, D.C. area.

He spent 12 years as an engineer with Potomac Electric Power Company and one year as an associate in electrical engineer-

ing at GWU. For five years he was plant superintendent in the National Bureau of Standards. For the past 11 years Brother Ellenberger has been with the Department of the Army in various planning and programming responsibilities.

Brother Ellenberger has been a member of AIEE/IEEE for 35 years, including service as chairman of the Washington Section and many committees. At the Awards Banquet of the section in February he was made a Patron of the Washington Section.

He is a member and past director of the Washington Society of Engineers and represents the group on the D.C. Council of

Engineering and Architectural Societies. He is also chairman of the WSE Education Committee.

Brother Ellenberger is also a member of ASME and is a registered professional engineer in the District of Columbia. GWU has honored him with its Alumni Service Award.

He served eight years of active duty in World War II and the Korean conflict, and is a colonel in the Signal Corps, U.S. Army Reserve (retired).

His outlook is summed up in his statement, "In 38 years of engineering activity I have never had an uninteresting job."

## Bernard Rocca is Leader in Vegetable Oil Industry



BERNARD T. ROCCA, SR., *California (Berkeley)* '15, has retired as chairman of the board of the Pacific Vegetable Oil Corporation of San Francisco, but continues to work full time for the company which he has built. PVO is one of the top 500 U.S. industrial corporations listed in *Fortune* magazine and one of the top ten vegetable oil producers in the country. The company began by buying tung oil from China and perilla oil from Japan, and has developed

through all phases of the vegetable oil industry, including the introduction of safflower to California twelve years ago.

Brother Rocca worked in the mining industry in Arizona and Nevada for a few years after graduation from Berkeley. He then met a displaced Russian in the vegetable oil business, and with him and others formed the Pacific Vegetable Oil Corporation. Brother Rocca became president of the company in 1926. He guided the company through the lean early years and through the Korean conflict, when all China trade was lost overnight.

Brother Rocca organized the National Institute of Oilseed Products and was president of the institute for eight years. He was also an organizer and president until recently of the California Council for International Trade, and he has been president of the Italian American Chamber of Commerce of the Pacific Coast.

Another business interest is the development of 20 square miles of desert land in the Rio King Valley of Nevada. Thousands of cattle are now being fed on the ranch.

His many activities include playing tennis, and he is a director and past president of the Youth Tennis Foundation of North-

ern California. He has been active in Humanist groups, and has been president of the United Secularists of America. He is the author of two books and many articles on semi-religious subjects.

Brother Rocca is a member of Alpha Tau Omega, Tau Beta Pi, and Sigma Xi.

He and his wife have four children and 15 grandchildren. His two sons are associated with him in business.

## Thomas Linville Heads Professional Engineers

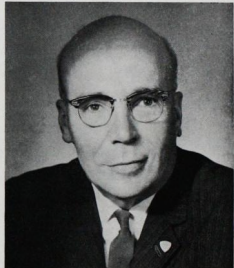
THOMAS M. LINVILLE, *Virginia '26*, has been elected president of the National Society of Professional Engineers for 1966-67. He retired in July as manager of research application at the General Electric Research and Development Center in Schenectady, New York.

Brother Linville was with General Electric for 40 years; he has been a test engineer, a design engineer, and an engineering manager. He is an expert on motor design and application, and is the author of numerous articles and several books on electrical machines and management.

He served as a reserve naval officer prior to World War II, and during the war he designed (with associates) propulsion machinery for 90 percent of the submarine fleet.

He serves on the Governor's Council for the Advancement of Research and Development in New York State and is a member of the National Research Council representing IEEE. Brother Linville is a Fellow and past director of IEEE and a Fellow of ASME and AAAS. He is a member of IRE, SAM, and the American Academy of Political and Social Science. He has served NSPE as vice president of the Northeastern Region and as president of the New York State Society of Professional Engineers.

Brother Linville's many civic activities include his church board, the Schenectady Museum, the City Planning Commission, the Community Chest Campaign, the Planned Parenthood League, the Boy Scouts of America, the Schenectady County



Health Council, the Chamber of Commerce, and others. He is a member of Delta Upsilon and a graduate of the Harvard University Advanced Management Program.

He has received the Charles A. Coffin Award for methods for d-c machine design and submarine propulsion, the Tri-Cities Engineer of the Year Award, and has been elected to the Raven Society of the University of Virginia.

Brother Linville and his wife have three children. Family activities include sailing, skiing, ham radio, and travel.

## Learned is Honored at University of Kansas



STANLEY LEARNED, *Kansas '24*, has been honored by the University of Kansas by the naming of the new \$1.9 million engineering building Learned Hall. The honor came in recognition of his many services to the University. He is currently chairman of the Council for Progress, and is past national president of the Alumni Association, past chairman of the Greater University Fund advisory board, trustee of the Endowment Association, and a Distinguished Service citee.

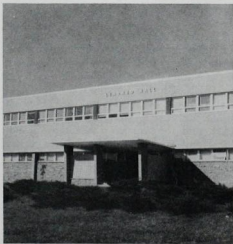
Brother Learned is president and chief executive officer of Phillips Petroleum Company of Bartlesville, Oklahoma. He has spent his entire career with that company, having joined Phillips in 1924 in the engineering department, where he advanced to the position of chief engineer. Assignments

as assistant manager of the products pipeline department and as manager of the defense plant engineering division followed.

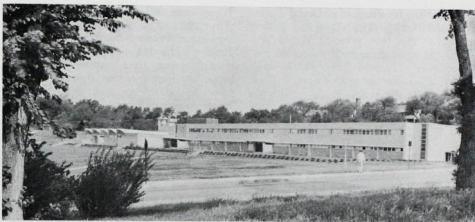
In 1944 Brother Learned was appointed vice chairman of the Phillips operating committee, and six months later he became chairman. He was elected a vice president, director, and member of the executive committee in 1949, and in 1951 he was advanced to executive vice president and assistant to the president. His many activities include serving as chairman of the National Safety Council, as chairman of the Business Advisory Committee of the National Association of Soil Conservation Districts, as president of the Oklahoma Junior Chamber of Commerce, and as president of the Oklahoma Society of Professional Engineers.

He is a member of Sigma Xi, Tau Beta Pi, Phi Delta Theta, the American Petroleum Institute, the Mid-Continent Oil and Gas Association, and the Independent Natural Gas Association.

Brother Learned and his wife have a daughter and four grandchildren.



The main entrance to Learned Hall, new engineering building at the University of Kansas.



The new \$1.9 million engineering building at the University of Kansas has been named Learned Hall, honoring Stanley Learned, *Kansas '24*. Brother Learned, who is president and chief executive officer of the Phillips Petroleum Company, has served the University in many capacities.

## Anderson is Texas Engineer of the Year



MARSHALL P. ANDERSON, *Alabama '23*, has been named Engineer of the Year by the Texas Society of Professional Engineers. He is a director, vice president, and chief engineer of Brown & Root, Inc., Houston, Texas.

After graduation from the University of Alabama, where he was elected to Tau Beta Pi, Brother Anderson began his career with such assignments as brush cutter on a survey party running boundaries on Indian Reservations in Minnesota, and as party chief on a planetable survey of oil fields in Mexico.

This was followed by work in connection with dams and hydro-plants in many locations. He then did valuation work for South Carolina Power Company and development work with the Tennessee Valley Authority.

For the next seven years, Brother Anderson was engaged in the design and development of complicated material handling fa-



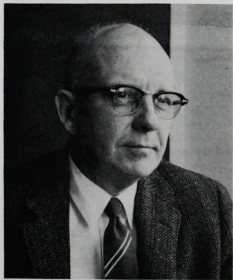
cilities for the construction of Grand Coulee Dam and the Mansfield Dam and powerhouse. At this time prior to World War II, he was chief engineer in charge of construction of Mansfield Dam, and he then formed his connection with Brown & Root.

During the war years, Brother Anderson was chief engineer and assistant works manager of Brown Shipbuilding Company, where he was given the job of layout and design of a complete shipyard, including all its necessary facilities. The yard pro-

duced some 350 ships for the U.S. Navy.

For the past 17 years he has been chief engineer of Brown & Root, Inc., and is now director and senior vice president in charge of engineering. He is responsible for all of Brown & Root's engineering work, both domestic and foreign, including projects in South America, Europe, Africa, and Canada. The work includes almost every type of project known to engineers—bridges, pipelines, industrial plants, process plants, sulphur production and marine structures.

## Prof. Walther Advances at George Washington U.



PROF. CARL H. WALTHER, *George Washington Hon.* '31, has been appointed to the new post of assistant vice president for academic affairs at the George Washington University. He had been a professor of engineering and applied science at GWU, and was advisor to Gamma Beta Chapter.

Brother Walther received his bachelor of

engineering degree and his master of civil engineering degree from the Johns Hopkins University. He was employed after graduation by the State of Maryland and by the Works Progress Administration of Maryland. He then worked for the H. F. Doleman Company and the Bethlehem Steel Company.

He joined GWU in 1939, serving in various capacities, including assistant dean of the School of Engineering and chairman of the Department of Civil Engineering.

During World War II he was a special consultant in structural and mechanical design to the Quartermaster General. From 1945-50 he was chairman of a subcommittee on structural mechanics of the National Research Council Committee on Quartermaster Research and Development. From 1950-62 he was an expert with the National Inventors Council.

Last year Brother Walther was on leave from GWU to work toward a Ph.D. at the University of Maryland.

He is a member and past president of the National Capital Area Section of the ASCE, a Fellow of the ASCE, a member of the Washington Academy of Science, and a member of the Society for Experimental Stress Analysis.



## Dr. Lampe Retires Again as Engineering Dean

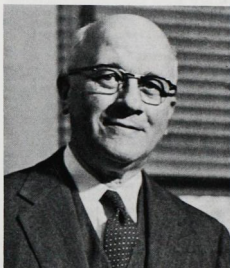
DR. J. HAROLD LAMPE, *North Carolina State Hon. '18*, has retired for the second time, in this instance as dean of engineering and professor of electrical engineering at Old Dominion College, Norfolk, Virginia. His long career has included serving as dean of engineering at the University of Connecticut, North Carolina State University, and Old Dominion College.

Brother Lampe received his degrees from the Johns Hopkins University. He served on the faculty there, then in 1938 went to the University of Connecticut, where he helped establish a new engineering school. He became dean of engineering there in 1940.

In 1945 he became dean of engineering at the North Carolina State University, where he was initiated into Theta Tau. He retired there in 1962 at the age of 65.

A new challenge then called Brother Lampe to Old Dominion College, where he established a new engineering program, including a new building, new staff, and new undergraduate and graduate curricula.

He has been active in the ASEE, the Association of Land-Grant Colleges and Universities, the AIEE, and the AAAS. He has served on a special Advisory Panel to the Congressional Subcommittee on Military Applications of Atomic Energy. He also belongs to the ASTM, the American Society of University Professors, the ASTE, the American Ceramic Society, the NSPE, and other engineering organizations. He is a member of Phi Kappa Phi, Sigma Xi, Tau



Beta Pi, Eta Kappa Nu, Blue Key, and Sigma Alpha Epsilon.

Brother Lampe has done consulting work for many companies, including General Electric, Westinghouse, Chesapeake and Potomac Telephone Company, and others. His technical interest is in the field of electrical power generation and transmission, instrumentation, and controls, and electric magnetic field concepts.

He has been awarded honorary degrees from Clarkson College and North Carolina State University. The Johns Hopkins University presented him a Distinguished Alumni Award in 1963.

### PLAN TO ATTEND THE THETA TAU CONVENTION!

The Twenty-Sixth Biennial Convention of Theta Tau will be held in Minneapolis, Minnesota, December 27 to 30, 1966. All members are invited and urged to attend. Advance reservations are not required, but alumni who wish reservations may make them through the Central Office, 13 Sona Lane, St. Louis, Missouri 63141.

## In Memoriam

DEANE E. ACKERS, *Kansas '17*, died April 18, 1966 in Boston, Massachusetts. He was chairman of the board of Kansas Power and Light Company, and lived in Topeka, Kansas. Brother Ackers entered military service after his graduation, and he received the Distinguished Service Cross and the Croix de Guerre for his service in World War I as a captain. He began work in 1920 as an engineer for the United Power & Light Corporation in Abilene, Kansas, his home town. In 1924 he joined Kansas Power and Light. He progressed to become president of the firm in 1934 and chairman in 1956. Brother Ackers was a director of North American Light & Power Company, Northern Natural Gas Company, Missouri Power & Light Company, Blue River Power Company, McPherson Oil & Gas Development Company, and Kewanee Public Service Company. He was a trustee of the Menninger Foundation in Topeka and of Midwest Research Institute in Kansas City. His many service activities included chairman of the Kansas Emergency Relief Administration, chairman of the Kansas Industrial Development Commission, chairman of the State of Kansas Crusade for Freedom, president of the Kansas Free Fair Association, and the advisory board of the school of engineering at KU. Brother Ackers was awarded a distinguished service citation from KU and an honorary doctor of science degree from Washburn University. He was a member of Beta Theta Pi and Sigma Tau, and was a Fellow of the American Institute of Management. He was listed in *Who's Who in the Midwest*. Brother Ackers is survived by Mrs. Ackers.

LEWIS E. ARNOLD, *Minnesota '20*, died April 23, 1966 in Los Angeles, California after a long illness. He was an employee of the Bureau of Engineering for the City of Los Angeles for 39 years. Upon his retirement in 1962 he was honored by commendatory resolutions from the Los Angeles City Council and from both houses of the State Legislature in Sacramento for his dedicated service. Brother Arnold was engineer of administration and was engineering advisor to the City Council and legislative representative to the State Legislature, and also represented the City to the League of California Cities and the State Highway Commission. He was an active member of the American Public Works Association, and was also a member of Tau Beta Pi and Acacia Fraternity. Brother Arnold is survived by his wife, three children, and four grandchildren.

DONALD L. BAILEY, SR., *Colorado Mines '21*, died August 10, 1966 in Bakersfield, California. He was owner of a large wholesale news business, the United News Company. After his graduation from Mines, Brother Bailey worked as a mining

engineer in Gold Hill, Nevada. In 1942 he moved to Bakersfield where he purchased the news company, which he expanded to serve all of Kern County. Brother Bailey was a member of Sigma Alpha Epsilon, Tau Beta Pi, and Masonic groups. He served as treasurer and board member of the Pacific Coast Independent Magazine Wholesale Association. He is survived by his wife, a son, a daughter, a brother, a sister, and three grandchildren. (*Mines Magazine*)

JAMES A. BARR, *Michigan Tech '07*, a charter member of Beta Chapter, died December 15, 1965 in Mount Pleasant, Tennessee. He was a retired consulting and mining engineer for International Mineral and Chemical Corporation and was vice president of Barr Associates, an engineering firm in Lakeland, Florida. When he left Michigan Tech, Brother Barr joined the American Agriculture Corporation, which eventually became the International Mineral and Chemical Corporation. He was the chief engineer when he retired. Brother Barr had served as a consultant for the French government and the World Bank, and he and his wife had traveled extensively abroad. He is survived by his wife, two sons, and six grandchildren.

WILLARD A. BURTON, SR., *Kansas '16*, died recently in Ottawa, Kansas. He was a civil engineer for Black & Veatch in Kansas City, where he retired in 1954. He was a Mason in Emporia, Kansas. Brother Burton is survived by two sons and seven grandchildren.

RAYMOND A. CASE, *Michigan Tech '12*, died January 5, 1966 in Portland, Oregon. He was also a member of Tau Beta Pi.

WILLIAM B. CASE, *Colorado Mines '20*, died April 12, 1966 in New York City. Until his retirement in 1957, he was a manager of Shell Oil Company. Brother Case joined Shell in 1920. He was transferred to New York in 1933 and later to Tulsa, Oklahoma. Brother Case was also a member of Tau Beta Pi and Sigma Alpha Epsilon.

BERYL E. CHARLES, *Missouri at Rolla '22*, died January 15, 1966 after a long illness. He was a mining engineer and had been employed at the Strawberry Mine, Fresno, California.

ROLLO J. COBBAN, *Minnesota '09*, died April 27, 1966. He lived in Sierra Madre, California. Brother Cobban was also a member of Tau Beta Pi.

MAURICE D. COVERT, *Ohio State '26*, a charter member of Sigma Chapter, died April 4, 1966. He was with the Ohio Rubber Company in Wilmoughby, Ohio for 30 years. Three years ago he retired, and he was living in St. Cloud, Florida.

FRANK DELAHUNTY, *Colorado Mines '25*, died April 14, 1966 in San Francisco, California. He was a retired mining engineer, having most recently been employed by the San Francisco Division of the Army Corps of Engineers. Brother Delahunty was superintendent of a gold mine in Baguio, Philippines when the Japanese invaded during World War II. He and his wife were imprisoned in Baguio and later Manila, and he became a leader of the prisoners. Following the war, he remained in the Philippines as superintendent of the mine until he and his wife returned to the States in 1953. Mrs. Delahunty is his only survivor. (*Mines Magazine*)

THEODORE E. DENNIS, *Michigan Tech '48*, died January 9, 1966 in Chicago, Illinois.

ROY O. ERICKSON, *Missouri at Rolla '22*, died recently. He was with the Winnebago County Illinois Highway Department in Rockford for many years. Brother Erickson was also a member of Phi Kappa Phi.

JAMES N. FOSTER, *Missouri at Rolla '25*, died March 12, 1966 in Pompano Beach, Florida. He had retired in 1963, having served as manager of Plant Services Departments of Mallinckrodt Chemical Works.

CLIFFORD B. GOULD, *Illinois '21*, died February 2, 1966 in Philadelphia, Pennsylvania. His home was in Whitehall, Michigan. Brother Gould retired 12 years ago as Michigan manager for the Barber-Green Road Machinery Construction Company, Aurora, Illinois, a position he had held for 30 years. He served in both World Wars, holding the rank of lieutenant colonel in World War II. He was instrumental in setting up the Army Air Force base in Homestead, Florida. He was a member of the Order of Daedalions, the first flyers in World War I. Brother Gould was a member of Kappa Sigma, the Economic Club of Detroit, the Masons, and several clubs. He is survived by his widow, two daughters, a sister, and eight grandchildren.

JOHN H. HEINDEL, *Illinois '16*, a charter member of Kappa Chapter, died recently.

HAROLD M. HORTON, *California (Berkeley) '24*, died August 9, 1966 in Truckee, California as the result of an automobile accident. He was a retired independent geologist. Brother Horton was also a member of Theta Chi, the American Association of Petroleum Geologists, AIME, and the Society of Exploration Geologists.

JOHN F. HOSTERMAN, *Missouri at Rolla '22*, died recently. He lived in Huntsville, Texas.

WILLIAM H. KELLER, *Missouri at Rolla '30*, died December 2, 1965 in Libertyville, Illinois. He was district manager of the Pipe Division of Johns-Manville. Brother Keller was a member of Pi Mu Epsilon and Theta Xi. He is survived by his widow and three children.

DUANE E. KENNEDY, *Case '19*, died March 29, 1966 in Chicago, Illinois.

HERMAN A. KRUGER, *Colorado Mines '09*, died July 4, 1966. He lived in Glendale, California.

ZEPHANIAH P. LAUFFER, *Michigan Tech '20*, died April 9, 1965 in Romulus, Michigan.

DONALD E. MACKNIGHT, *Montana Tech '58*, died June 3, 1966 in Butte, Montana. He had been employed by the Western Machinery Company in Vancouver, British Columbia. Brother Macknight served in the Army in the South Pacific before entering Montana Tech. After graduation he had lived in San Mateo, California and Vancouver. He was a member of AIME, the Professional Engineers of Canada, and the Canadian Institute of Mining. Brother Macknight is survived by his widow, four sons, his mother, and other relatives.

PROF. ROY A. MCCREADY, *Montana Tech '39*, adviser to Theta Beta Chapter, died June 20, 1966 in Bellevue, Washington. He was an assistant professor in the General Engineering Department of the University of Washington. Brother McCready received his master's degree in engineering at the University of Washington. He served in the Navy from 1943 to 1957, retiring as a lieutenant commander. He was a member of Tau Beta Pi, AIME, and the American Society of Engineering Education. Surviving him are his wife, two sons, his mother, a sister, and two brothers.

WILLIAM DOUGLAS McMILLAN, *California (Berkeley) '14*, died October 21, 1965 in Arlington, Texas. He was a mining engineer, geologist, and managing vice president of Columbine Metals, Inc. Brother McMillan is survived by his wife and a son.

STANLEY RALPH MELLING, *Utah '62*, died January 22, 1966 in Rawlins, Wyoming as the result of an automobile accident.

EINAR O. PEARSON, *Minnesota '27*, died July 17, 1965 in Oklahoma City, Oklahoma. He was president of Pearson, Chase and Associates, which he established in 1961. Brother Pearson went to Oklahoma City in 1928 as a structural engineer for the J. B. Klein Iron and Foundry Company. In 1931 he went to Peoria, Illinois, where he was planning and city engineer. He was a partner in an engineering firm there from 1938 until 1941,

## THE GEAR OF THETA TAU

when he returned to Oklahoma City with Harland Bartholomew and Associates. He was the firm's engineer for the development of the Bartholomew Plan which set guidelines for the city's growth pattern. In 1946 he became vice president of Treat Engineering Company. Brother Pearson was a member of the American Institute of Planners, American Society of Planning Officials, NSPE, and other professional and civic organizations. Brother Pearson is survived by his wife, a daughter, a son, three sisters, and two brothers—one is HAROLD T. PEARSON, *Minnesota* '27.

RICHARD M. PLUMMER, *Case* '24, died July 17, 1966. He retired in 1962 from the office of Lake County (Ohio) Engineer, which he had held for 14 years. Brother Plummer was also a member of Zeta Psi, Tau Beta Pi, and Sigma Xi. He was active in NSPE, SPE, Kiwanis, and Masonic orders. Surviving are his wife and a son.

LESTER B. POPE, JR., *Columbia* '35, died in March 1966. He was editor, presentation and production, for *Chemical Engineering*. He had previously been associate editor and managing editor. Before joining *Chemical Engineering* he had worked on the editorial staff of *Scientific American* and as a chemist for Ford Instrument Company.

ELMER R. RAMSEY, *Colorado Mines* '12, died February 28, 1966 in Denver, Colorado. He was retired president of Dorr-Oliver Company of Stamford, Connecticut. He joined that company in 1913 as an engineer, and progressed to western sales manager, general sales manager, assistant to the president, operating vice president, and finally, president in 1949. In 1953 he retired from the presidency, and was named vice chairman of the board and management consultant. Brother Ramsey was a member of Sigma Alpha Epsilon and Tau Beta Pi and numerous clubs. He received the Distinguished Achievement Award in industrial management from Colorado School of Mines in 1959, and in 1965 was given a distinguished service award from the AIMMPE. Brother Ramsey is sur-

vived by his wife, two sons, a daughter, and two sisters. (*Mines Magazine*)

CARL SEVERIN, *Case* '10, died June 18, 1966. He had retired in 1952 as a senior engineer with the Lamp Division of General Electric Company at Nela Park, Cleveland, Ohio. Brother Severin was a pioneer in the development of miniature lamps and in 1927 he was given the Charles A. Coffin Award for his work in that field. (*Case Alumnus*)

LOUIS H. SKILLMAN, *Ohio State* '37, died in December 1963.

ROY A. STANGER, *Illinois* '27, died in 1966 in Texarkana. He was an engineer with the Portland Cement Corporation and lived in North Little Rock, Arkansas. He had been with the corporation since 1941. Brother Stanger was a member of ASCE, NSPE, Arkansas Society of Professional Engineers, SAME, and other engineering organizations. He was also a member of Sigma Chi and Masonic orders. He is survived by his wife.

CHARLES W. TEETS, *Michigan Tech* '17, died November 23, 1965 in Santa Monica, California. He was also a member of Sigma Alpha Epsilon.

DWIGHT H. THORNBURG, *California (Berkeley)* '21, died March 27, 1965. He is survived by his widow in Laguna Beach, California.

RONALD M. WHITE, *Missouri at Rolla* '26, died December 14, 1965 in Vandalia, Ohio. He was director of aviation at the Dayton, Ohio Municipal Airport. Brother White was also a member of Kappa Sigma.

JOHN W. YOUNG, *Michigan Tech* '05, died April 29, 1966 in Hendersonville, North Carolina. He was a charter member of the Rhombohedron Club, which became Beta Chapter. Brother Young was treasurer of Milwaukee-Downer College at Milwaukee, Wisconsin for 30 years prior to his retirement. He is survived by his wife and a son.

## Historical Items Sought

John M. Dealy, chairman of the History Committee, has been compiling material for a Theta Tau History. If you have old photos, clippings, etc. and would loan them or give them to Theta Tau, they might be useful in the History. Also,

early members of each chapter are encouraged to write their recollections about their days as student members of Theta Tau. Please send items to Dr. John M. Dealy, Department of Chemical Engineering, McGill University, Montreal 2, Quebec, Can.

# Alumni Notes

## MINNESOTA

**A** WILLIAM M. LEWIS, *Founder*, writes that he is now a great-grandfather, and also is classified as a "sissy," being forced to use a golf cart for the first time.

JOHN C. O'BRIEN, '12, is a retired mining engineer. He lives in Glendale, California.

WILLIAM RIPLEY DORR, '14, is retired; he lives in Santa Barbara, California.

LYNDON L. FOLEY, '18, is self employed as a consultant in petroleum engineering in Tulsa, Okla.

BERNARD LARPEUTEUR, '25, is a staff engineer for raw materials research, Bethlehem Steel Company, Bethlehem, Pennsylvania. His home is in Cornwall.

DR. L. W. "TOD" NEUBAUER, '26, is professor of agricultural engineering at the University of California at Davis.

ROBERT A. GERLICHER, '28, is special projects manager for Copolymer Rubber and Chemical Company, Baton Rouge, Louisiana.

ANTHONY D. ALDERSON, '29, is assistant chief engineer, bridge and structural, for Soo Line Railroad Company, Minneapolis, Minnesota.

GEORGE B. BRIMHALL, '33, is 747 service support manager for the Boeing Company's Commercial Division, Renton, Washington. He lives in Bellevue, Washington.

WESLEY H. JOHNSON, '34, is supervisor of engineering service for U.S. Steel Supply Division, St. Paul, Minnesota.

RALPH E. McMILLEN, '39, is self employed as a geologist-geophysicist consultant in Tulsa, Okla.

THOMAS E. LEONARD, '55, is a development engineer for Honeywell, Inc. He has been transferred from West Germany to Linokping, Sweden, where he is helping to introduce "American know-how" into the development of the automatic controls for Sweden's new jet airplane, the Viggen.

RICHARD E. SWENSON, '55, is general manager for Walker Systems, Inc. in Duluth, Minnesota.

LAWRENCE FELDSEIN, '62, has completed two years of active duty with the Army Corps of Engineers. Nine months were spent in South Vietnam. He has now started work as a research engineer in the Mechanical Engineering Department of Battelle Memorial Research Institute at Columbus, Ohio.

1/LT. GERALD J. DITTBERNER, '64, has been promoted to officer-in-charge, Engineering & Communication Section of a project supporting the Global Weather Central at Offutt AFB, Nebraska. The Central supports SAC, USAF and is the primary military weather center for all services. His wife, Mary Kay, is working as a public health nurse in Omaha, Nebraska.

JAMES MCCARVILLE, '64, is a production foreman and engineer for Procter & Gamble, Chicago, Illinois. His home is in Morton Grove.

WILLIAM H. GOLLIWITZER, '65, is an engineer for Xerox Corporation, Rochester, New York.

## MICHIGAN TECH

WILLIAM F. CARROLL, '08, has been hospitalized; he is in Honolulu, Hawaii.

EDWARD H. SNYDER, '11, is chairman of the board of Combined Metals Reduction Company, Salt Lake City, Utah.

MAURICE L. BRADT, '16, retired in 1957 as general superintendent for Pickands, Mather & Co. He and Mrs. Bradt have three daughters and nine grandchildren.

JOHN C. CLARKE, '16, has been a chemical engineer for Oneida, Ltd.; city engineer for the City of Utica, New York, where he makes his home; and general manager of the Utica City Board of Water Supply. He and his wife have a daughter and a grandson.

DURAND A. HALL, '16, practices as a consulting geologist in San Francisco. His home is in Berkeley, California.

ROWLAND B. KING, '16, retired in 1958 after a career in the mining industry. He is a widower and lives in Victoria, British Columbia. He has one son and two grandchildren.

CLYDE W. NICOLSON, '16, retired in 1957 as a consulting engineer for the North Range Mining Company in Negaunee. He and his wife live in Rialto, California. Brother Nicolson has two sons and a daughter.

JULIUS P. SCHEMMEL, '16, retired in 1958 after 40 years of continuous service with Pickands, Mather & Co. He was general superintendent of the Cuyuna District operations. Brother Schemmel and Mrs. Schemmel live in Largo, Florida. He has one son, four daughters, and 22 grandchildren.

CHESTER P. SHIELDS, '16, is sales manager for Copper Motor Company in Houghton. He and his wife have two daughters, a son, and nine grandchildren.

DR. WALTER C. LAWSON, '23, is vice president and general manager of Phelps Dodge Corporation, Douglas, Arizona.

T. A. NILSEN, '27, is an industrial realtor in San Francisco, California.

ALBERT LAWRENCE JOHNSON, '33, is assistant to the superintendent for Pickands, Mather & Co., Erie Mining Co., Hoyt Lakes, Minnesota. He was previously superintendent of Mauthe, Cary, and Peterson Mines on the Gogebic Range, and transferred to the Erie Mining Company upon permanent closing of all mines on the Gogebic Range.



## THE GEAR OF THETA TAU

ROBERT W. VAN EVERA, '40, has been appointed director of the new AMC Division of Technical Services. He was previously editor of the *Mining Congress Journal*. The new division will coordinate AMC's technical activities, including direction of *Journal* projects. Brother Van Evera has attended Harvard Business School and served in the Navy during World War II.

ROBERT J. DORR, '43, is a specialist in mining products for General Electric Company in Houston, Texas.

BILLY J. ELLERTHORPE, '45, is a scheduling engineer for the U.S. Atomic Energy Commission in Richland, Washington. He lives in Kennewick.

RAYMOND FRITZ, '46, is Chicago sales manager for the Alloy Engineering Company, Berea, Ohio. His residence is in Arlington Heights, Illinois.

WALTER J. HANSEN, '48, is service investigations supervisor of the Engineering Service Section, Commercial Airplane Division of the Boeing Company. He lives in Redmond, Washington.

RONALD E. HAVEL, '55, is a civil engineer (traffic and planning) for H. W. Lochner & Co., Chicago, Illinois. His home is in Naperville.

CAPT. NORMAN K. JENSEN, '55, has been transferred to Maxwell AFB, Alabama to attend the Air Command and Staff College for nine months.

JAMES I. TANIS, '56, is a geophysicist for Shell Oil Company in Bakersfield, California.

JOHN W. BALAI, '57, is chief metallurgist for the BCA Division of Federal Mogul Corporation. He was married on October 15, 1966.

DAVID L. MCCAIN, '58, is an associate tool engineer for the Boeing Company, Renton, Washington. He lives in Bellevue.

JAMES R. HODGE, '60, is an area engineer for E. I. du Pont de Nemours in Circleville, Ohio.

WAYNE JARVI, '61, is now assistant head of engineering for Union Carbide Corporation, Cleveland, Ohio. Brother Jarvi lives in Bay Village, and is the father of two sons—Chris, three, and Aaron, one year old.

### COLORADO MINES

**T** JOHN H. EAST JR., '10, is a consultant in mining in Denver, Colorado.

LESTER C. THOMAS, '12, is retired; he lives in Denver, Colorado.

HARRY M. FISKE, '21, is retired and living in San Marino, California. He was employed by Ingersoll-Rand Company.

W. W. POWERS, '24, is retired. His home is in Denver, Colorado.

ARNOLD S. BUNTE, '26, is a geological engineer. He is semi-retired; he lives in Roswell, New Mexico.

IVAN G. BURRELL, '31, was honored by Colorado School of Mines with a Distinguished Achievement Medal at the June Commencement. Brother Burrell is division manager of the Houston Division of Marathon Oil Company. He is active in professional associations and in the Houston Chamber of Commerce and the Petroleum Club.

M. E. VOLIN, '33, is director of the Institute for Mining Research at Michigan Technological University, Houghton.

FRANK L. MCCLURE, '34, received a Distinguished Achievement Medal from the Colorado School of Mines at the June Commencement. He is president and general manager of Du Pont Industrial e Commercial SA in Sao Paulo, Brazil. Brother McClure is a director and former president of the American Chamber of Commerce of Sao Paulo, a member of the Administrative Board of the Sao Paulo Cancer Society, and is active in other organizations. He has been president and general manager of Industrial Quimicas Brasileiras "Duperia" S.A. since 1953.

MARK T. GILKISON, '36, vice president of the Gates Rubber Company, Denver, Colorado, has been elected second vice president of the American Supply & Machinery Manufacturers' Association, Inc. at its annual meeting. He has been a member of the board of directors of ASMA for several years.

JOHN E. HATCH, '36, was transferred by Alcoa in April from the Warrick Operations in Southern Indiana to Davenport, Iowa as quality assurance manager at the Davenport Works of Alcoa. In November 1965 Brother Hatch completed 25 years with Alcoa and became a member of the 25 year club.

COL. LOUIS E. BREMKAMP, '38, is a civil engineer in the U.S. Army at Fort Leonard Wood, Missouri.

ARTHUR O. DETMAR, '39, was awarded a Distinguished Achievement Medal by the Colorado School of Mines at its June Commencement. He is vice president for Exploration and Production of Mobil Oil Corporation's Mid-Continent Region. Before assuming his present position, Brother Detmar was president and general manager of the Mobil Oil Company of Canada, Ltd. He is a member of the Board of Directors of the Rocky Mountain Oil and Gas Association and of the board of the Mid-Continent Oil and Gas Association. He is a member of the API, the Colorado Mining Association, the ASPG, the Geological Society of America and other groups. He is also a life member of the Canadian Petroleum Association. Brother Detmar lives in Littleton, Colorado.

RALPH L. HENNEBACH, '41, has been elected an executive vice president of American Smelting and Refining Company. He has been with the company for 25 years, having begun in the company's laboratory at El Paso, Texas. Brother Hennebach is now located in New York City.

RANDALL H. TAYLOR, '41, is a senior mining engineer and assistant project manager for Pierce



Management Corporation of Scranton, Pennsylvania. He is now overseas.

R. T. REHTMEYER, '42, is an engineer for Ingersoll-Rand Company in Scottsdale, Arizona.

T. WALTER BROWN, '44, is president of the Brown Fence Company, Chattanooga, Tennessee. His home is in Lookout Mountain.

THOMAS C. HEDLUND, '44, is assistant general manager of Idarado Mining Company, Telluride, Colo.

GORDON M. MINER, '48, has been promoted from manager of mines to vice president—operations for Hecla Mining Company. Prior to joining Hecla in 1963, Brother Miner was employed by Homestake Mining Company as manager of their Utah Division.

HUGH E. BRADLEY, '50, is assistant pipeline superintendent for Apco Oil Corporation. He is located in Arkansas City, Kansas.

DAVID R. COLE, '52, is a senior metal mine inspector for the Colorado Bureau of Mines. He lives in Grand Junction, Colorado.

STUART S. MERWIN, '52, is general manager—mining for the Union Pacific Railroad. His residence is in Arcadia, California.

ADAM THOMAS, '52, is owner of Exploration Engineering in Houston, Texas.

JOHN M. ANDERSON, '54, is assistant mine manager for Craigmont Mines Ltd., Merritt, British Columbia, Canada.

NEWELL H. ORR JR., '54, is manager of government sales for Aluminum Company of America. He lives in Rockville, Maryland.

CHARLES R. RUSSELL, '54, has been transferred from senior systems analyst, Richfield Oil, Los Angeles, to long range planning coordinator for Atlantic Richfield Company, Dallas, Texas.

CHARLES R. THREWEIT, '57, is district engineer for Union Oil Company of California in Olney, Ill.

IVAN D. ALLRED, JR., '59, is a consulting petroleum engineer in Oklahoma City, Oklahoma.

WILLIAM G. FLEISNER, '62, is a senior management analyst for the Boeing Company. He resides in Rockledge, Florida.

CAPT. R. P. KITCHELL, '62, received the Army Commendation Medal in Vietnam on May 14. He is an engineer construction officer in the First Logistical Command's Headquarters Detachment. Brother Kitchell's wife lives in Fort Collins, Colorado.

STEVEN L. HARVEY, '63, has completed his active duty tour in the U.S. Army and has returned to work with the Aluminum Company of America in Tennessee. He lives in Maryville, Tennessee.

EARL F. JAYNES, '63, is an exploration geophysicist for Standard Oil in Anchorage, Alaska. He

was married August 20, 1966 to Miss Nancy Pat Berry, formerly of Los Angeles, a teacher at Fort Richardson, Alaska. They met while he was in the Army at Fort Richardson.

CAPT. ARTHUR J. PANSZE, JR., '63, has been assigned to the Army Engineer School, Fort Belvoir, Virginia, as a geology instructor. He was previously commanding officer of Company B, 82nd Engineer Battalion, Hamburg, Germany. Brother Pansze and his wife live in Alexandria.

## CASE

WALTER R. HOFFMAN, '18, received a Meritorious Service Award from the Case Alumni Association at the May banquet. He is presently treasurer of the Alumni Association.



E. CLINTON CRIGGS, '20, is retired; he lives in Chicago, Illinois.

HAROLD C. McART, '26, was honored with a Meritorious Service Award from the Case Alumni Association in May. He is secretary of the Alumni Council.

EARL L. H. BASTIAN, '31, is a senior engineer, Central Region, for Shell Oil Company in Chicago. He lives in Lake Forest, Illinois.

WALLACE R. PERSONS, '31, chairman and chief executive of Emerson Electric Company of St. Louis, was pictured and featured in an article about the company in *Forbes*, September 15, 1966.

JOHN R. PARKER, '36, is division sales manager for Southern California Edison, Visalia, California.

CALVIN B. DALTON, '43, heads Dalton-Dalton Associates, Cleveland architects, engineers, and planners. The firm recently was given a National Award for Engineering Achievement by *Actual Specifying Engineer*, a national publication for the engineering profession.

DAVID H. BUERKEL, '48, is owner of Buerkel Engineering and Sales Company, Broomall, Pennsylvania. His home is in Newtown Square.

GEORGE P. DONOVAN, '49, is manager of crawler tractor sales for International Harvester Company. He resides in Mount Prospect, Illinois.

ROBERT C. GARVER, '59, was recently promoted to supervisor of quality engineering for the Hoover Company, North Canton, Ohio. He lives in Massillon, Ohio.

DR. JAMES H. BURGHART, '60, has been awarded a Ph.D. degree by Case. He is now assistant professor of electrical engineering, Air Force Institute of Technology, Wright-Patterson Air Force Base, Ohio. He lives in Dayton.

JAMES P. RYBAK, '63, is a graduate student in electrical engineering at Colorado State University at Fort Collins.

# CALIFORNIA (BERKELEY)

**E** GEORGE M. COLLINS, '11, is trustee of the James Campbell Estate, Kailua, Hawaii.

DR. DONALD H. McLAUGHLIN, '14, delivered the commencement address for the Anna Head School in Berkeley. The same week he was awarded an honorary degree from the University of California, recognizing his service to the university and his distinguished career as a mining engineer.

DR. FRANCIS E. VAUGHAN, '16, is president of V. & E. Manufacturing Company, Pasadena, Calif.

JESSE L. BENNETT, '20, is retired; he lives in Napa, California.

DR. M. GUY EDWARDS, '21, is a retired consulting geologist. His residence is in Pasadena, California.

HAROLD B. LLOYD, '23, retired in 1961 and is now living in "Leisure World," Laguna Hills, California. His hobby is golfing.

E. N. PENNEBAKER, '24, is self employed as a consulting geologist in Scottsdale, Arizona.

W. G. DONALDSON, '24, is a consulting geologist in Berkeley, California.

LAWRENCE L. TABOR, '26, is a research geologist for John A. Blume and Associates, Engineers, San Francisco, California. His field is seismic structural response.

RALPH A. MCGOEY, '27, is a consulting petroleum engineer in Bakersfield, California.

DR. ROGER REVELLE, '29, is mentioned prominently in an article, "La Jolla's New University: Olympus on a Mesa," in the August 1966 *Harper's*. Brother Revelle was instrumental in the founding of the campus. He is also pictured in *Life*, September 30, 1966. Brother Revelle is currently director of the Center for Population Studies in the Harvard University School of Public Health.

DR. ROBERT R. COATS, '31, is a geologist with the U.S. Geological Survey, Menlo Park, California. He lives in Palo Alto.

PHILIP ANDREWS, '33, is a consulting geologist in Boulder, Colorado.

DR. JOHN ELIOT ALLEN, '35, is head of the Department of Earth Sciences at Portland State University, Oregon. He is president of the National Association of Geology Teachers for 1966-67.

T. FENTON HAM, '35, is a civil engineer for the City of Santa Cruz, California.

A. J. SOLARI, '35, is vice president of Chevron Standard Ltd., Calgary, Alberta.

H. L. WALDTHAUSEN, JR., '39, is a consulting engineer for gypsum products manufacturing in Las Vegas, Nevada.

DR. MATTHEW P. NACKOWSKI, '41, is professor of mining and geological engineering at the University of Utah in Salt Lake City.

BRUCE H. HELLIER, '42, is a petroleum engineer for Standard Oil Company of California in Taft, California.

WARREN B. SCOBEY, '42, is a consulting geologist in Golden, Colorado.

PAUL S. DAY, '51, is a petroleum geologist for Gulf Oil Corporation in Casper, Wyoming.

J. A. SAWYER, '53, is a geologist for Standard Oil Company of New Jersey in Tripoli, Libya.

MYRON R. ELLIOTT, '56, is manager of engineering for Sunray DX Oil Company, Tulsa, Oklahoma.

HAROLD V. HOFFMAN, '57, is a physicist at Stanford Research Institute, Menlo Park, California. He lives in Los Altos Hills.

GARY C. BURNHAM, '66, is employed by North American Aviation, Inc., Seal Beach, California, as an engineer for structures on the Saturn II project.

# KANSAS

ROSS I. PARKER, '12, is retired from the General Electric Company. He lives in Hinsdale, Illinois.

HENRY E. SAMSON, '16, retired as division manager for Southwestern Public Service Company, Roswell, New Mexico, in 1955. He is living in Laguna Hills, Calif.

H. G. "RED" GREGORY, '22, is retired as a civil engineer for Southern California Edison Company. He lives in "Leisure World," Seal Beach, Calif.

WILLIAM W. BREHM, P.E., '23, is retired but active in construction projects in Hutchinson, Kansas.

PAUL ENDACOTT, '23, is vice chairman of Phillips Petroleum Company, Bartlesville, Oklahoma.

G. E. ROSE, '24, is retired from Southwestern Bell Telephone Company in Topeka, Kansas.

GEORGE R. BENZ, '25, is a consultant for Phillips Petroleum Company in Bartlesville, Oklahoma.

HAROLD D. HERNDON, '25, is an independent oil operator in San Antonio, Texas.

DEAN A. MCGEE, '26, is president and chairman of the board of Kerr-McGee Corporation, Oklahoma City, Oklahoma.

L. G. FEIL, '28, chief of the Engineering Division, U.S. Army Engineer Division, Cincinnati, Ohio, has been appointed a commissioner representing the U.S. government on the Ohio River Valley Water Sanitation Commission.

DONALD E. BONJOUR, '32, is president-elect of the national American Library Trustees Association.

He has been active in library development in his county, region, and nation for many years. Brother Bonjour lives in Lenexa, Kansas.

T. PAUL DWYER, '34, has been installed as president of the Old Mission Optimist Club of Fairway, Kansas. He is a partner in the firm of Dwyer & Kite, consulting engineers.

HOWARD E. MILLER, '35, is sales engineer (bearings) and corporate secretary for Harold R. Swanton, Inc., Los Angeles. He lives in Pasadena, California.

EDGAR L. STOUT, '35, retired on July 1 and lives in Winter Haven, Florida.

MAX F. LAMM, '36, is assistant chief of the Engineering Division, U.S. Army Engineer District, St. Louis, Missouri.

PRESTON A. COLE, '36, is chief geologist for Cities Service Gas Company, Oklahoma City, Oklahoma.

V. A. KOELZER, '37, is associate and head of the Planning Division of Harza Engineering Company, Chicago. He lives in Mount Prospect, Illinois.

HERMAN A. JANZEN, '39, is now public health engineer with the San Jose, California Health Department.

HOWARD C. MORELAND, '39, is construction manager for Phillips Petroleum Company in Guayama, Puerto Rico. He is in charge of field construction of a 62 million dollar petrochemical plant and a 4½ million dollar harbor for tankers. He has twin sons who entered college this fall.

W. C. DOUCE, '41, has been appointed manager of Phillips Petroleum Company's Chemical Department, Bartlesville, Oklahoma.

JACK R. BRUYER, '49, is area manager for Public Service Company of Oklahoma in Clinton, Okla.

WILLIAM B. DUNCAN, '49, is an engineer for Zimmerman Steel Company, Lawrence, Kansas.

ROBERT W. ELLIOTT, '50, is vice president of Hiram Elliott Construction Company, Kansas City, Missouri. He lives in Prairie Village, Kansas.

L. M. RICKARDS, '50, is exploration director of the International Department of Phillips Petroleum Company, Bartlesville, Oklahoma. He has two children.

MAJOR GLEN T. BEAUCHAMP, '53, is now Marine officer instructor for the NROTC unit at the University of Nebraska, Lincoln. He went there from a tour in Vietnam, where he was operations officer for the First Battalion, Fourth Marines in the Chu Lai landing May 7, 1965. Brother Beauchamp is married and has three sons.

DR. B. DALE TROTT, '56, completed his Ph.D. in metallurgical engineering at the University of Illinois in May. He is now associate chief of the Fabrication Dynamics Division, Battelle Memorial Institute, Columbus, Ohio.

BENNY A. ANDERSON, '57, was recently promoted to assistant project engineer for advanced transports with Pratt & Whitney Aircraft, East Hartford, Connecticut. He has also been promoted to lieutenant commander in the Navy Research Reserves. Brother Anderson and his family live in Middletown, Connecticut.

FRANK W. ROHL, '57, has been promoted to production engineering supervisor for Mobil Oil Company in Oklahoma City, Oklahoma.

CAPT. JACOB F. GOBLE, '58, graduated in August from the Air University's Squadron Officer School, Maxwell AFB, Alabama. He has been assigned to Pope AFB, North Carolina for duty. Brother Goble is married and has three children.

R. A. SCHROFF, '58, has been named superintendent of projects for the Mid-Continent region in the natural gas liquids department of Cities Service Oil Company in Tulsa, Oklahoma.

WILLIAM ELTON BENSO, '59, has been promoted to specialist-research with North American Aviation in Orange, California. He is working on his doctorate at UCLA.

T. W. DOMVILLE, '59, is the father of a son, Thomas Wayne Jr., born October 6, 1966. Brother Domville is a flight instructor/flight engineer for TWA's Training Center in Kansas City, Missouri.

RICHARD J. CONKLIN, '61, is a draftsman for Radotinski-Deardorff, Architects, in Kansas City, Kansas. He lives in Overland Park, Kansas.

JOHN A. TROTTER JR., '62, is an engineer for McDonnell Aircraft in South Houston, Texas.

D. W. GRUNDEMAN, '64, is a development and evaluation engineer for Honeywell, Inc., in Minneapolis. His home is in New Brighton, Minnesota.

JAMES P. KENNEDY, '64, is a graduate student in chemical engineering at KU. He was married May 29, 1966 to Miss Patricia Ann Bauman in Tulsa, Oklahoma.

ROD CLEMETSON, '66, entered the Army in June and is now stationed at the Defense Language Institute, Presidio of Monterey, Monterey, California. He is taking a 37-week course in the Russian language. Brother Clemetson's wife Betty is with him.

## MIT

W. MAXEY JARMAN, '25, is chairman of Genesco, Nashville, Tennessee.

GEORGE I. CHATFIELD, '28, is president and treasurer of three corporations—WFGM Inc. (WFGM-AM), Music-Service Corporation (WBNE-FM and "Music by Muzak"), and *Montachusett Review* (a weekly newspaper with 37,000 circulation)—all in Fitchburg, Massachusetts. Brother Chatfield spent 34 years in national advertising, including advertising manager for Rinsco and Lifebuoy. He was executive vice president and director and

# H

## THE GEAR OF THETA TAU

senior vice president and director of two large New York advertising agencies before "retiring" to run and build his own business.

### COLUMBIA



CHARLES M. BRISTER, JR., '14, is retired; he lives in Petersburg, Virginia.

RICHARD MCKAY, '21, is retired and is living in Bellevue, Washington.

G. LESTER JONES, '22, is a consulting engineer in Marne, Michigan.

E. L. RAUN, '34, is manager of the Avon Refinery for Phillips Petroleum Company in Martinez, California. His home is in Alamo, California.

JOHN K. MLADINOV, '43, is director of the Puget Sound Regional Transportation Planning Program, an intergovernmental organization. He is located in Seattle, Washington.

MANUEL A. PIETRANTONI, '43, is division engineer for the U.S. Bureau of Public Roads in Bayamon, Puerto Rico.

CLIFFORD BERNETT, '47, is employed by American Overseas Petroleum Ltd. of New York City.

STANLEY D. WEBBER, '57, is a staff engineer for Celanese Coatings Company in Louisville, Ky.

L.T.J.C. THEODORE J. BIELEN, JR., '64, was married to Miss Barbara Jean Mackey September 12, 1965 at the Columbia University Chapel. He is now staff civil engineer at the U.S. Naval Torpedo Station, Keyport, Washington.

ROBERT C. HALDEN, '64, was married in October 1964 and is now the father of a son, Daniel, born in December 1965.

### MISSOURI AT ROLLA

**I** L. H. CUNNINGHAM, '20, is retired as a mining engineer for Peabody Coal Company. He lives in Baxter Springs, Kansas.

EDWIN K. SCHUMAN, '20, is retired as a mathematician from the U.S. Bureau of Mines in Rolla. He is now president of Tootsizer Chemical Corporation, which makes a liquid fertilizer.

JOSEPH M. WILSON, '21, is an independent petroleum geologist in Dallas, Texas.

RAYMOND E. MURPHY, '23, is professor of economic geography and editor of *Economic Geography* at Clark University, Worcester, Massachusetts. He is the author of a book, *The American City: an Urban Geography*, published this spring by McGraw-Hill Book Company.

WALTER A. WERNER, '23, is self employed as an arbitrator for labor-management relations in St. Louis, Missouri.

GUY R. SCOTT, '24, is retired; he lives in Neosho, Missouri.

KARL F. HASSELMANN, '25, was presented an honorary doctor of engineering degree at the August commencement exercises at the University of Missouri at Rolla. Brother Hasselmann is retired as president and director of the Salt Dome Production Company of Houston, Texas. He began his petroleum industry career with California Company, then joined the Sinclair Exploration Company and was sent to Europe to prospect for oil. He returned to the U.S. in 1933 and became president and director of the Salt Dome Oil Corporation. He was also president and director of the Tidelands Oil Corporation of Houston from 1947 to 1957. Brother Hasselmann is a member of numerous professional societies, clubs, and service organizations.

JAMES L. PASLEY, '25, is retired as assistant bridge engineer in charge of design for the Missouri State Highway Department. He lives in Jefferson City.

HOWARD A. HERDER, '26, is assistant sales manager—industrial with the Sahara Coal Company, Chicago. His home is in Elmhurst, Illinois.

K. R. NEAL, '30, is semi-retired. He lives in Gainesville, Texas, but travels nine months each year.

REX Z. WILLIAMS, '31, is president of the Rolla State Bank, Rolla, Missouri.

JOHN T. STURM, '32, is president of the Sturmvill Lumber Company, Arnold, Missouri. He lives in St. James, Missouri.

W. W. COGHILL, '33, is with the Ozark-Mahoning Company in Tulsa, Oklahoma.

BERNARD J. GROSS, '33, is director of marketing for W-K-M, a division of A.C.F. Industries, Inc., Houston, Texas.

ALFRED H. HESSE, '33, is a metallurgical engineer for R. Lavin & Sons, Inc., Chicago. He lives in La Grange, Illinois.

LOWELL A. HIBBITS, '33, is regional field engineer for Kaiser Aluminum & Chemical Sales, Inc. He lives in Milwaukie, Oregon.

LAWRENCE W. MEYER, '36, is a mechanical engineer for Alcoa, Pittsburgh, Pennsylvania. His home is in Oakmont.

W. L. DONNELLY, '37, is general manager of the Flame-plating Department of Linde Division of Union Carbide Corporation, Indianapolis, Indiana.

WALTER L. HOLZ, '37, is president of TerLex Company Inc., Carmi, Illinois.

EDWIN W. LOGAN, '37, has been awarded an honorary professional degree by the University of Missouri at Rolla. He is works manager and chief engineer for Med-Science Electronics, Inc., St. Louis, Missouri.

HARRY L. GERWIN, '38, is project manager for NASA at Greenbelt, Maryland. He lives in Bethesda, Maryland.

# FALL 1966

ROBERT C. SEIBEL, '38, is professor of electrical engineering at Montana State University, Bozeman, Montana.

CHARLES S. BLACK, '42, is purchasing agent for Caterpillar Tractor Company, Joliet, Illinois.

C. T. MORRIS, '42, is in the International Engineering Department of Monsanto Company, St. Louis, Missouri.

WILLIAM R. ANDERSON, '43, is a senior system analyst for CF&I Steel Corporation. He is located in Pueblo, Colorado.

C. ALFRED DICK, '44, is general manager of WMOC radio in Chattanooga, Tennessee. He lives in Lookout Mountain.

SANFORD L. SIMMONS, '44, is director of medical engineering at the University of Colorado Medical Center. He lives in Morrison, Colorado.

DONALD S. SMITH, '44, is manager of the Air Conditioning, Ventilating and Plumbing Department of Brown & Root Inc., Houston, Texas.

REG E. GOODWIN, '47, is a consulting geologist in Midland, Texas.

GEORGE J. MILLER, '47, is a research specialist for the Boeing Company, Seattle, Washington.

JAMES B. CHANEY, '48, is production supervisor of the Baroid Division of National Lead Company, Houston, Texas.

GEORGE M. ANDERSON, '49, is assistant district mine superintendent for Harbison-Walker Refractories, Fulton, Missouri.

MURRAY SCHMIDT, '49, is a sales engineer for Unimark Corporation, San Ramon, California. He lives in Lafayette, California.

LOUIS E. GRECO, '50, is a supervisory physical scientist for the Aeronautical Chart and Information Center, St. Louis. His home is in Crestwood, Mo.

THEODORE J. REEVES, '50, is vice president and partner of Penrod-Reeves-Gastorf Co., Inc., St. Louis County. He lives in Chesterfield, Missouri.

WILLIAM M. BALDWIN, '51, is an engineer for Big Bend Engineering Company, Tallahassee, Florida.

VAL H. STIEGLITZ, JR., '51, is a senior project engineer with Bechtel International, Ltd. in London, England. He is the father of four children from two to 14 years old.

JOHN G. MACKE, '52, is assistant sales manager of FASCO Industries, Inc., Rochester, New York. He lives in Penfield, New York.

DANIEL E. GROTEKE, '54, is a project engineer for American Standard, Louisville, Kentucky.

RICHARD HAMPEL, '54, is plant manager for Borg Warner's Plumbing Products Division, Mansfield, Ohio.

RALPH HOLLOCHER, '54, is a senior manufacturing engineer for the Aeronutronic Division of Philco-Ford Corporation, Anaheim, California. His home is in Whittier.

CHARLES W. SCHUMAN, '55, is employed by Howard, Needles, Tammen & Bergendoff, Kansas City, Missouri. He lives in Overland Park, Kansas.

LLOYD REUSS, '57, is a group engineer for the Chevrolet Division of General Motors, Warren, Michigan. He lives in Bloomfield Hills.

RICHARD M. BARUCH, '58, is a field engineer for the Portland Cement Association. He lives in Tucson, Arizona.

CHARLES A. ANDERSON, '53, is mill superintendent for St. Joseph Lead Company, Viburnum, Missouri.

WILLIAM A. KRUGER, '59, is a design engineer with Clark, Dietz & Associates, Urbana, Illinois. His home is in Champaign.

DONALD E. BEUERLEIN, '61, is a paving foreman for Koss Construction Company. He lives in Springfield, Missouri.

RICHARD R. KAPFER, '61, is an engineer for AVCO Corporation, Cincinnati, Ohio. On July 23, 1966 he was married to Miss Judith Niesy.

RONALD R. PFEUFFER, '61, is a metallurgist for Revere Copper & Brass, Inc., Detroit. He lives in Mount Clemens, Michigan.

LARRY G. BAUER, '62, is a production development engineer for Dow Chemical, Midland, Mich.

JAMES H. YOST, '62, is production engineer of the float glassware room for Pittsburgh Plate Glass Company in Crystal City, Missouri. He lives in Festus, Missouri.

HARDIN T. ABRAMS, '63, is employed at Collins Radio Company as a sales engineer. He is married and has one daughter.

WALTER MUELLER JR., '63, has been discharged from the Army after serving in Vietnam. He is now a mining engineer with Kaiser Steel Company at their Sunnyside, Utah coal mines. Brother Mueller is married and has a daughter.

STEPHEN P. PHELPS, '64, is an underwriter with Aetna Casualty & Surety, Omaha, Nebraska. He has changed his name to Phelps from Feyerabend.

ALAN A. KAMP, '64, is employed by Phillips Petroleum Company as a structural engineer in Bartlesville, Oklahoma. On December 19, 1965, he was married to Illa Malone.

2/LT. G. DOUGLAS SCHELLMAN, '64, is with the U.S. Army 13th Engineer Battalion in Korea.

JAMES A. CLIPPARD, '65, is a product engineer for B. F. Goodrich Company, Miami, Oklahoma.

THOMAS K. GAYLORD, '65, is a graduate student in electrical engineering at the University of Missouri at Rolla.



## THE GEAR OF THETA TAU

TRUMAN W. TURALL, '65, is a foundry foreman for Allis Chalmers, Milwaukee, Wisconsin.

CHARLES D. WOODWARD, '66, is an engineer in training for the Saginaw Steering Gear Division of General Motors, Saginaw, Michigan.

### ILLINOIS

HARRY DARBY, '17, and former President Eisenhower received honorary doctor of laws degrees from Kansas State University, Manhattan, in June. Brother Darby is a Kansas City, Kansas industrialist and former U.S. Senator. In April he received the first annual Community Citizenship Citation presented by the Kansas City, Kansas Area Chamber of Commerce. He served as president of the Chamber of Commerce in 1931.

**K** LEONARD N. WHITE, '21, is retired; he lives in Little Rock, Arkansas.

LOUIS E. MOHR, '23, is president of Universal Power Piping, Chicago, Illinois.

CHARLES H. DODGE, '24, retired in 1963 as senior valuation engineer for the Internal Revenue Service, Pittsburgh, Pennsylvania. He is living in Knoxville, Tennessee.

J. C. HAPPENNY, '24, retired May 31 as vice president in charge of commercial activities for Central Illinois Public Service Company. He spent 37 years in the utility field. Brother Happenny will continue as a member of the board for the firm. After leaving the University of Illinois he played professional baseball with the Chicago White Sox. Brother Happenny and his wife have three daughters. He lives in Springfield, Illinois.

GEORGE W. ROBINSON, '24, is retired; he lives in Baytown, Texas.

CLARENCE H. ELDER, '25, is vice president and chief engineer of Reliable Electric Company, Franklin Park, Illinois. His home is in Hinsdale.

JOHN M. TRISSAL, '25, is vice president for development for Illinois Central Industries, Chicago. He lives in Flossmoor, Illinois.

J. R. BRODERICK, '26, is vice president of Central Illinois Public Service Company, Springfield.

CARL A. BASEDOW, '27, is a manufacturer's representative for Mason and Basedow Company, Chicago. He lives in Park Ridge, Illinois.

CHARLES M. HOPPER, '27, is an engineer consultant for Sverdrop & Parcel & Associates, Inc. He moved to Tampa, Florida from St. Louis in April 1966.

E. B. MILLNER, '27, is district superintendent for Commonwealth Edison Company, LaGrange, Illinois. His home is in Elmhurst.

GERALD F. PAULEY, '27, is a marketing research analyst for Monsanto Company, St. Louis. He lives in Chesterfield, Missouri.

ROBERT C. HADLEY, '28, is a sales engineer for Stearns-Roger Corporation, Denver, Colorado.

W. L. LINDSAY, '28, has been with Mobil Oil Corporation for 33 years. He moved into the New York headquarters in 1965 in National Accounts, Department of Commercial Sales.

PHILIP A. ANDERSON, '32, is manager of Sundstrand Hydro-Transmission in La Salle, Illinois. His home is in Princeton, Illinois.

ARTHUR W. KOWITZ, '32, is state conservation engineer for the U.S. Soil Conservation Service, Madison, Wisconsin.

FREDERICK W. MAST, '33, is president of Jens Olesen & Sons Construction Company, Waterloo, Iowa. He is vice president of Associated General Contractors of America, Inc.

### UTAH

HOWARD L. BALDWIN, Hon. '07, is retired; he lives in San Francisco, California.

ARVID E. ANDERSON, '20, is retired and is living in Santa Cruz, California.

JAMES EARL TRINNIMAN, '25, retired March 1, 1966 as chief engineer for the Utah Idaho Sugar Company. He had been with the company for 40 years.

J. WINSTON ALTER, '26, is retired. His home is in Salt Lake City, Utah.

ALTON H. SORENSON, '26, is on special assignment in Paraguay to evaluate a hydroelectric project. His firm is Caldwell, Richards & Sorenson.

GEORGE M. JONES, '27, is deputy engineer for the Utah State Department of Highways in Salt Lake City.

ELTON W. PACE, '30, is president of Pace-Turpin & Company, Salt Lake City, Utah.

WALTER KLETTING, '32, has been elected vice president for industrial sales of the Salt Lake Hardware Company. He was district sales manager for the Industrial Division of U.S. Rubber Company from 1947 to 1958. Brother Kletting has served as president of the Intermountain Alumni Association.

DR. SIMON RAMO, '33, vice chairman of TRW Inc., is featured in an article about the company in the October 1966 *Fortune*.

R. E. VAN LIEW, '33, is a senior engineer for Pacific Telephone Company, San Diego. His home is in Coronado, California.

HOWARD M. HURST, '34, is assistant director of the Division of Environmental Health for the Utah State Department of Health in Salt Lake City.

MAX J. KENNARD, '35, has been elected vice president of business development for Parsons-Jurden Corporation, New York, a subsidiary of Ralph M.



Parsons Construction Company. He was vice president of Salt Lake's Combined Metals Reduction Company for 15 years.

BIARD E. ANDERSON, '35, is a project engineer for American Smelting & Refining Company, Salt Lake City.

GLAYTON H. KIMBALL, '36, has been named to the new post of university engineer in Salt Lake City. He was formerly director of physical plant and operations. Brother Kimball has served as president of the Intermountain Alumni Association.

ELMER BUTLER, '39, is a hydraulic engineer for the U.S. Geological Survey in Salt Lake City.

FREDERICK D. CORTNER, '41, is now dean of students at Pembroke State College, Pembroke, North Carolina.

ROBERT D. HAYES, '41, is a staff engineer for U.S. Steel Corporation in Provo, Utah.

VERVIN R. GILSON, '47, is a civil engineer in Salt Lake City.

KING HINCKLEY, '47, is district engineer for Westinghouse Electric Corporation in Seattle. He lives in Bellevue, Washington.

ROBERT K. HOBROCKS, '53, is a mechanical engineer for Shell Oil Company in Martinez, California. His home is in Concord.

ARCHIE D. HILL, '55, is electrical maintenance supervisor for Idaho Nuclear Corporation, Idaho Falls, Idaho.

RALPH B. HODGES, '57, is an associate engineer for Utah Power & Light Company in Salt Lake City.

R. LYLE GUSTAVSON, '60, is a construction superintendent with Atlantic Richfield Company. Formerly he was employed as a structural engineer with Austin Associates. He is a registered professional civil engineer in Utah and Washington. Brother Gustavson and his wife have a son and daughter and reside in Seattle, Washington.

KENNETH ADGAR, '62, is an engineer for Hercules Inc. He lives in Salt Lake City.

DAVID S. HOLTRY, '63, is an associate engineer for the California State Water Rights Board. He lives in Carmichael, California.

MICHAEL J. KIRKMAN, '65, is a technical graduate trainee with Isochem Inc., Richland, Washington.

RICHARD N. OISHI, '66, is a junior engineer for Sperry-Phoenix in Phoenix, Arizona.

## ALABAMA

STEPHEN D. MOXLEY, '22, was awarded an honorary doctor of science degree by the University of Alabama at commencement exercises in May 1966. The degree recognized his outstanding career as an industrialist and his services to educational, civic, and charitable organizations.

E. R. COULBOURN, '23, is vice president and member of the board of Alabama Power Company.

WILLIAM E. BUCKLER, '26, is the owner of Buckler Foundry Company, East Alton, Illinois.

G. S. MABREY, '31, has been promoted from director of research of Southern Kraft Division to manager of corporate planning for International Paper Company in New York City. His home is in Riverside, Connecticut.

ANDREW A. FARRELL, '33, is now vice president for industrial relations in the Agricultural Chemicals Division of Mobil Chemical Company in Richmond. His home is in Doswell, Virginia.

GUTHRIE S. MABREY, '33, has been appointed to the executive staff of the Southern Kraft Division of International Paper Company with the title of manager of corporate planning. He lives in Mobile, Alabama.

WILLARD F. GRAY, HON. '34, has been temporarily elevated to the position of assistant vice president of the University of Alabama.

A. CARL SCHENCK, '34, is self employed as a consultant in construction management and engineering in Norfolk, Virginia.

WILLIAM G. REYNOLDS, '37, is vice president of employee relations of the Gulf States Paper Corporation with headquarters in Tuscaloosa, Alabama.

ARTHUR R. REID, '39, is industrial sales manager for the Masonite Corporation, Chicago. His home is in Barrington, Illinois.

LORIN B. SCREEN, '40, a general engineer with the U.S. Army Materiel Command, has been awarded the Department of Army's Outstanding and Sustained Superior Performance Awards for his technical competence and managerial ability with the Research and Development Directorate.

T. LOUIS AUSTIN, JR., '42, is executive vice president of Texas Power & Light Company, Dallas, Texas.

ROY C. HEATON, '42, is manager of the instrumentation laboratory of Laboratory for Electronics, Inc. in Boston. He lives with his wife and four sons in Topsfield, Massachusetts.

CHARLES R. OWEN, '47, is division industrial engineer for Procter & Gamble Company, Cincinnati, Ohio.

ROBERT L. JONES, JR., '48, is an associate engineer with C. D. Williams & Associates, Augusta, Georgia. He has a wife and four children.

LEOPOLD J. CANTAFIO, '52, is a member of the technical staff of Aerospace Corporation, San Bernardino, California.

DR. ODIS P. McDUFF, '52, recently earned his Ph.D. at Stanford University and has returned to the University of Alabama as associate professor of electrical engineering.

CHARLES D. SMITH, JR., '58, is at the Kwajalein Test Site where he is associated with the Nike-X Project Office.

## THE GEAR OF THETA TAU

WILLIAM J. STONE, '59, is an aerospace engineer with NASA's Langley Research Center. He is presently working toward his Ph.D. degree at Virginia Polytechnic Institute, Blacksburg, Virginia.

B. H. PATRICK, JR., '61, is a lead test/installation engineer for ARO Inc. in Tullahoma, Tennessee. He lives in Manchester.

JAMES T. DIXON III, '63, is back in Huntsville, Alabama, where he is employed by Space Craft, Inc.

MALCOLM C. JOHNSON, '65, is an engineer with the Chemstrand Division of the Monsanto Company, Pensacola, Florida.

ROBERT R. SNELGROVE, '65, is a civil engineer for Pittsburgh Plate Glass, Chemical Division, in Lake Charles, Louisiana.

### CARNEGIE TECH

C. N. HOLLINGSWORTH, '24, is retired; he lives in Rockville, Maryland.

DR. LAWRENCE K. JETTER, '36, is a senior research scientist for Kaiser Aluminum & Chemical Corporation, Spokane, Washington.

LYOYD B. KRAMER, '40, is director of systems and control R & D for Westinghouse Research Laboratories, Pittsburgh, Pennsylvania.

MAJOR KARL B. WEBER, '44, has completed three years as assistant professor of military science (senior class) at the University of Cincinnati, and has been reassigned to the 2d Engineer Construction Group in Korea as plans, operations and training officer. Brother Weber received a master of community planning degree from the University of Cincinnati in June.

**N** ROBERT C. STRAKA, JR., '47, has been appointed a vice president of the Carborundum Company, Niagara Falls, New York. He joined the company in 1955 after being employed with Harbison Walker Refractories Company. Brother Straka recently attended the

Advanced Management Program at the Harvard University Graduate School of Business Administration. He lives with his family in Tonawanda, New York.

HAROLD G. HALL, '48, is president and principal owner of Hall Industries, Inc., Pittsburgh, Pa.

ROBERT S. SCHOENBERGER, '48, has been appointed manager of purchasing services for Union Carbide Corporation, New York City. He had been manager of petroleum purchases.

### WISCONSIN

CLYDE J. KOSKINAN, '24, is retired; he lives in Chicago Heights, Illinois.

ROBERT O. SCHINDLER, '49, is district chief freeway engineer for the Wisconsin State Highway Commission. His home is in Wauwatosa, Wis.

GEORGE P. ZIMMERMAN, '49, is assistant city engineer for West Covina, California.

**I** WILLIAM A. HAMBLEY, JR., '50, is now a management intern with the Department of the Army, Office of the Chief of Staff. The program is a rotating training with different job and training assignments for one year, then placement in one of the staff components of the Army Chief of Staff (in a civilian capacity). Brother Hambley is one of nine interns selected from 8,000 that took the test last year. He is living in Arlington, Virginia.

RICHARD J. SLIFKA, '51, is head of the Sabre Equipment Section of AC Electronics Division of General Motors in Milwaukee. He lives in West Allis, Wisconsin.

MARK WALLACE, '51, has been elected president of the Process Heat Exchanger Society. He is presently employed as technical sales representative by the Wolverine Tube Division of Calumet and Hecla. Brother Wallace lives in Houston, Texas.

EARL Q. BOWERS, '57, is a senior design development engineer in the Advanced Systems Section of National Cash Register. He is responsible for computer system specifications and design philosophy of future systems, and is specializing in the I/O area. Brother Bowers lives in Huntington Beach, California.

DAVID J. RICHTER, '62, is a graduate student at the University of Illinois, Urbana.

ENS. ROBERT G. SCHNEIDER, '65, has completed OCS and the Navy's Civil Engineer Corps School in Port Hueneme, California. He is now attached with Mobile Construction Battalion "62" (Seabees), which is homeported in Gulfport, Mississippi. In December he expected to be deployed to Vietnam for a nine-month tour.

### IOWA

LAURENCE L. FRY, '25, is president of Voltmaster Company, Inc., Corydon, Iowa.

**O** ELMER C. SLAGLE, '25, is assistant director of Division Hospital Services for the Minnesota Department of Health in Minneapolis.

LYOYD L. HESKETT, '28, is a senior engineer for Pacific Telephone, San Diego. He lives in La Jolla, California.

M. H. JENSEN, '30, is chief of specifications for Calhoun, Tungate & Jackson, Architects, of Houston, Texas.

FREDRIC F. KUBIAS, '39, is an application engineer for the Ordnance Department of General Electric Company, Pittsfield, Massachusetts. He is now involved in the new Poseidon missile program, which he reports is a real challenge and extremely interesting.

COL. GEORGE W. LUTZ, '43, is chief of the Test Requirements Division in the office of the deputy director for operational test and evaluation in the Directorate of Operations, U.S. Air Force, in Washington, D.C. Brother Lutz lives in North Springfield, Virginia. He is a commercial pilot with instrument and instructor ratings.

CHARLES W. LAZENBY, '46, is assistant sales manager for Caterpillar Overseas S.A. in Hong Kong.

WILLIAM H. OLSON, '49, is supervisor of the Product and Market Division of Caterpillar Overseas S.A. in Geneva, Switzerland.

W. J. SWARD, '50, is a contracting engineer for Chicago Bridge & Iron Company, Pasadena, California. He lives in Arcadia.

JAMES M. SMITH, '58, has been promoted to assistant division superintendent of the "Zytel" Nylon Division at Du Pont's Parkersburg, West Virginia plant. He lives in Vienna, West Virginia with his wife, son, and daughter.

JOHN YOUNGERMAN, '61, is an associate engineer for water resources with the California Department of Water Resources, Red Bluff, California.

THOMAS A. BUTTS, '62, is a commissioned officer with the U.S. Public Health Service, Baton Rouge, Louisiana.

RONALD R. LARSON, '62, is a personnel engineer for the Boeing Company, Renton, Washington. He lives in Bellevue.

JAMES L. BOCKHOLT, '65, is a graduate student at the University of Illinois.

2/LT. DAVID J. TOPINKA, '65, is with the U.S. Army in Germany.

## VIRGINIA

**I** RALPH E. O'DETTE, '45, has been named senior staff advisor of Chemical Abstracts Service of the American Chemical Society, with offices in Columbus, Ohio. He was previously with the National Science Foundation.

FERMAN W. PERRY, '50, is president of Perry Engineering Company, Inc., Winchester, Virginia.

GEORGE MCCASLAND, '52, is a consultant in Philadelphia, Pennsylvania. He is a full time student in clinical psychology at Temple University.

JAMES H. ROBERTSON, JR., '61, is an engineer with Martin Company in Baltimore, Maryland.

CHARLES R. RICE, JR., '64, is assistant public works officer in the Public Works Department, U.S. Naval Air Station, Glynnco, Georgia.

ROY BURKE III, '65, is a graduate student in sanitary engineering at the University of Florida.

## NORTH CAROLINA STATE

**P** J. EARL WILLIAMS, '26, is secretary and treasurer of Alley, Williams, Carmen & King Inc., Burlington, North Carolina.

W. TILFORD SMITH, '29, executive vice president and director of the Newport News Shipbuilding and Drydock Company, has been honored by his Alma Mater as a Distinguished Engineering Alumnus.

THOMAS L. HODGES, '32, is southern district manager of Chevron Asphalt Company, a subsidiary of Standard Oil Company of California. He has been elected vice president of the Asphalt Institute and chairman of the 12-state Southern Division of the Institute for 1966. Brother Hodges lives in Mobile, Alabama.

HAROLD W. HUMPHREYS, '43, is head of the Hydraulic Systems Section of the Illinois State Water Survey, Urbana. He lives in Champaign, Illinois.

FLOYD P. BARNES, '44, is general field engineer for Portland Cement Association. He has lived in Greensboro, North Carolina for about nine years; he and his wife have four sons, ages six to 14.

S. N. RICHARDSON, '49, is executive vice president of W. B. Meredith II, Inc. in Norfolk, Virginia.

ALSTON W. STAFFORD, JR., '49, is production manager for the Pulp and Paperboard Division of Riegel Paper Corporation, Riegelwood, N.C.

HENRY C. QUAY, '52, is employed by Lockheed Aircraft in Marietta, Georgia. His home is in Dunwoody, Georgia.

JOHN R. ARWOOD, '56, has been appointed general manager of the Far East Division of Sea-Land Service, Inc. The firm is a pioneer in the truck-ship-truck transportation industry. Brother Arwood will have responsibility for the service between Oakland, California and Okinawa, Ruyku Island. He is a past president and chairman of the board of the American Institute of Industrial Engineers. Brother Arwood lives in North Caldwell, New Jersey.

J. T. PEARSON, JR., '56, is an instructor in engineering at the State University of New York at Stony Brook. He lives in Port Jefferson, New York.

BEN E. LEMONS, '61, is area supervisor for Allied Chemical Corporation, Hopewell, Virginia. He lives in Chester.

JAMES A. HACKNEY, III, '62, executive vice president and general manager of J. A. Hackney & Sons, Inc. of Washington, North Carolina, a truck body manufacturing firm, has become a registered professional engineer in North Carolina. He is active in AIEE, FENC, and other organizations. He and his wife have one son.

1/LT. ANTS KOPPEL, '64, has graduated from the U.S. Air Force electronic warfare officer course at Mather AFB, California. He is remaining at Mather as a B-52 Strato Fortress crew member with SAC.

## THE GEAR OF THETA TAU

### OHIO STATE

LT. COL. G. F. GLASS, USA RET., '27, is now a farmer at Culpeper, Virginia.

**Σ**

EMMETT E. KNOBB, '27, is vice president of Max J. Zeller, Inc., Columbus, Ohio.

ELMER MARSHALL, '28, is retired; he lives in Chula Vista, California.

H. ROY CHOPE, HON. '48, is president-elect of Tau Beta Pi, engineering honor society.

EARL T. HEALY, JR., '52, is a sales representative for Worthington Corporation, Columbus, Ohio. He lives in Bedford.

WILLIAM C. ANDERSON, '54, is a senior test engineer for North American Aviation, Inc. He resides in Chatsworth, California.

ROBERT G. MAYERS, '56, has been transferred to Weibbaden, Germany as project manager of the IBM group there. In June he received his MBA degree from American University. Brother Mayers and his wife have two daughters and a son.

JAMES W. BRADLEY, '62, is a specialist in welding processes at the General Motors Institute, Flint, Michigan.

THOMAS J. SCATTOLONI, '64, is a process development engineer for Escambia Chemical Corporation, Pensacola, Florida.

### SYRACUSE

ROBERT W. OERTEL, '37, is manager of construction for Xerox Corporation, Rochester, New York.

**T**

HAROLD F. GREINER, '44, is vice president and general manager of Sealco Inc., Providence, Rhode Island. His home is in Warwick.

ROBERT J. SPARLING, '48, is manager of the optical engineering-electronics laboratory for General Electric in Syracuse. He lives in Fayetteville, New York.

WILBUR C. COWELL, '49, is now manager of the New York District for Crouse-Hinds Company, electrical manufacturer. He was formerly in Cincinnati. Brother Cowell lives in Ramsey, N.J.

### ARKANSAS

BRIG. GEN. B. J. LEON HIRSHORN, USA RET., '33, is a military research specialist for Bell Aerosystems Company, Niagara Falls, New York. His home is in Williamsville, New York.

**Y** ROBERT R. WAGSTAFF, '34, is vice president—engineering for United Engineers & Constructors Inc., Philadelphia, Pa.

ROBERT H. COMBS, '44, is director—marketing for Western Kentucky Gas Company in Owensboro.

H. K. BREWER, '48, is a sales engineer for Westinghouse Electric Corporation, Little Rock, Arkansas.

CDR WILLIAM F. RUSSELL, '49, has been awarded the Bronze Star Medal for meritorious service in Vietnam as commanding officer of U.S. Naval Mobile Construction Battalion FIVE, providing construction support of the 3rd Marine Amphibious Force combat operations.

CHARLES G. SKILLERN, '50, is now with the Wilmot Castle Company (Rochester), a division of Ritter Pfaudler. He lives in Henrietta, New York.

ROBERT E. BOONE, '51, is now project manager with Charles S. McCandless Engineering Company, consulting engineers, Palo Alto, California. He is doing sanitary engineering. Brother Boone's residence is in Milpitas.

DON E. CALLAHAM, '51, is supervisor of the Field Engineering Department for Hughes Aircraft Company in Tucson, Arizona.

WILLIAM C. ROBINSON, '51, is vice president of Power Equipment Company of Memphis, Tennessee. The company does engineered systems and specialties for process and plant utilities in the Mid-South area.

WAYNE D. ORTLOFF, '52, is manager of quality control for Rocketdyne Division of North American Aviation, Inc. He lives in Neosho, Missouri.

KENNETH W. RIPPY, '52, is superintendent of quality control for National Supply Division of Armo Steel, Gainesville, Texas.

DR. M. PALMER TERRELL, '57, received the Ph.D. degree from the University of Texas in August 1966. He is now assistant professor in the School of Industrial Engineering and Management at Oklahoma State University in Stillwater. His wife and two children are with him.

JAMES G. MANVILLE, '59, is an engineer with Union Electric Company, St. Louis, Missouri.

JOHN P. HOSKYN, '60, is a research associate in agricultural engineering at the University of Arkansas, Fayetteville.

JERRY C. PERCIFUL, '60, is a senior chemical engineer for the Research and Technical Department of Texaco Inc., Port Arthur, Texas. He lives in Groves, Texas.

JERRY R. ROGERS, '63, is a graduate student in civil engineering at Northwestern University, Evanston, Illinois.

CHARLES F. MAYFIELD, JR., '64, is a senior engineer for the Long Lines Department of American Telephone and Telegraph in Independence, Mo.

JOHN F. MILLER, '64, is a project engineer with International Paper Company's Pine Bluff Mill, Pine Bluff, Arkansas. He is married to the former Barbara Jo Pigg and they have one son, Brian Fremont.

RICHARD C. GIBBONS, '65, is a graduate student in business administration at the University of Arkansas, Fayetteville.

JACK A. GILES, '65, is employed by Texas Instruments Inc. as a design engineer in the area of infrared detection. He is located in Dallas, Texas.

DON R. ALLEN, '66, is on a two-year management trainee program with the Fairfield Works of United States Steel Corporation in Birmingham, Alabama.

ROY O. WALTERS, '66, is on six months' active duty with the U.S. Army. He plans to return to his job as a consulting engineer in Heber Springs, Arkansas.

## PURDUE

DR. ALBERT R. SPALDING, HON., head of the Department of Freshman Engineering, was cited for "excellence in instruction" and received the Western Electric Fund Award at the annual meeting of the Illinois-Indiana section of the American Society for Engineering Education.



H. W. ARDUSER, '31, is owner of Arduser & Company—Ardun Supply Company, Tulsa, Oklahoma.

RAYMOND E. HANNING, '33, is superintendent of pliofilm production for Goodyear Tire & Rubber Company, St. Marys, Ohio.

HAROLD C. WEIMER, '35, is a salesman for Beardsley & Piper in Chicago, Illinois.

EARL L. COTTRELL, '54, is assistant superintendent of maintenance for Freeport Sulphur Company, Grand Isle, Louisiana. He lives in Metairie.

JAMES E. PARK, '57, is a graduate student in mechanical engineering at Rice University, Houston, Texas.

CARL S. HINSHAW, '59, is a contract administrator for LTV Aerospace Corporation, Dallas, Texas.

MATTHEW WITCZAK, '62, completed active duty in the Corps of Engineers (Army) in August 1965 as a first lieutenant. He received the Army Commendation Medal for meritorious service and several citations. He is presently a graduate instructor in civil engineering at Purdue and is working towards his Ph.D. Brother Witczak is married and has three children.

KENNETH W. KOVANDA, '63, is a student of dentistry at the University of California Medical Center, San Francisco.

## ARIZONA

JACOB ERICKSON, '31, is an engineering coordinator for the U.S. Bureau of Public Roads in Phoenix, Arizona.

CHARLES NICHOLAS, '39, is vice president of National Executive Search and a director of manage-

ment personnel search in Los Angeles. After World War II Brother Nicholas joined Texaco Inc. and spent 15 years as West Coast aviation sales manager and two years in New York as Texaco assistant sales director for aviation sales. In 1962 he joined Alamo Airways, Las Vegas, Nevada as vice president and general manager. He assumed his present position in June 1966. Brother Nicholas lives in Sherman Oaks, California.

H. W. VAN LOO, '39, is a consulting engineer in the firm of Coe & Van Loo, Consulting Engineers, Inc. in Phoenix. He lives in Scottsdale, Arizona.

OSCAR T. LYON, JR., '42, is assistant state engineer with the Arizona Highway Department in Phoenix.

JOHN P. BRENNAN, '43, is department chief for engineering with Western Electric Company Inc., New York, New York. He lives in Boonton, New Jersey.

FRED S. FIEDLER, '43, is president of Fred Fiedler and Associates in Los Angeles. His home is in Glendale, California.

GEORGE A. KOMADINA, '43, is assistant resident manager of Pima Mining Company, Tucson, Ariz.

FRANK NANCE, '43, is a sales engineer for Triangle Electric Supply Company, El Paso, Texas.

LARS HOLMQUIST, '48, is an engineer with the American Bridge Division of U.S. Steel Corporation in Los Angeles. He lives in South Pasadena, California.

JAMES G. HESS, JR., '51, is a project engineer for the Fluor Corporation Ltd. He is now in Haarlem, Netherlands.

E. H. TORGENSEN, '51, is chief pit engineer for Phelps Dodge Corporation, Copper Queen Branch, at Bisbee, Arizona. He lives in Warren.

C. ROBERT ROBINSON, '54, is a marketing engineer with Motorola Semiconductor Products Division in Phoenix. He lives in Scottsdale, Arizona.

DONALD D. SHIPLEY, '54, is owner of Therm-O-Power Consultants & Engineers in Tucson, Arizona.

WILLIAM D. ULRICH, JR., '55, is division supervisor for Sandia Corporation, Albuquerque, New Mexico.

WILLIAM S. FRANKLIN, '56, is a senior logic engineer for G. E. Computer Department, Phoenix, Arizona.

MARTIN O. LOHMAN, '57, is assistant manager of the Walnut Creek Branch of Geo. S. Nolte Consulting Civil Engineers, Inc., Walnut Creek, Calif.

ROBERT W. RUPE, '59, is project manager for Quinton Engineers, Ltd. in Saigon, South Vietnam.

LEE C. BODENHAMER, '60, is a senior design engineer for Ryan Aeronautical Company, San Diego, California.



## THE GEAR OF THETA TAU

1/LT. THOMAS R. LANGE, '63, is a member of the Aerospace Control Squadron at Ent AFB, Colorado. He helps man the North American Air Defense Command Space Defense Center at Colorado Springs.

DAVID H. METZEL, '64, is a chemical engineer for Pittsburgh Plate Glass. He lives in Akron, Ohio.

RICHARD G. BRUSCH, '65, is a graduate student at the University of Arizona.

LAWRENCE A. HARRINGTON, '65, is a project engineer for E. I. du Pont de Nemours & Company, Parlin, New Jersey.

DUNCAN M. MCINTOSH, '65, is a graduate student in aerospace engineering at the University of Arizona, Tucson.

DAVID W. GROZER, '66, is a design engineer on the technical staff of Hughes Aircraft Company, Missile Systems Division, Guidance and Control Laboratory. He lives in Los Angeles, California.

MYRON R. HENDERSON, '66, is a mechanical engineer for American Smelting & Refining Company in Salt Lake City, Utah.

LYLE D. JOHNSON, '66, is employed as an electrical engineer in the Ordnance Division of Honeywell Inc. at Hopkins, Minnesota. He is living in Minneapolis, Minnesota.

### MONTANA TECH

ED. B. TRUEWORTHY, '33, is a consulting engineer presently on assignment with the Commercial Aircraft Facilities Department of the Boeing Company, Renton, Washington.



DR. ALBERT W. SCHLECHTEN, '37, head of the Department of Metallurgical Engineering at Colorado School of Mines, has been elected vice president of the American Institute of Mining, Metallurgical, and Petroleum Engineers. He has been active in AIME and numerous other organizations. Brother Schlechten recently spoke at the Inter-Regional Seminar on Ore Concentration in Water Short Areas, sponsored by the United Nations in New York.

CHARLES L. BECKSTROM, '38, is assistant post engineer at the Oakland Army Base, Oakland, Calif.

GEORGE T. HANSON, '38, is manager of electrochemical operations for General Astrometals Corporation, Anaconda, Montana.

DONALD E. MAJER, '41, is owner of Ernie Majer Inc., Spokane, Washington, and Majer Ranch & Livestock, Cheney, Washington.

CLIFFORD A. BARKELL, '42, is division geologist for Shell Oil Company in Los Angeles, California.

GUSTAV STOLZ, JR., HON. '50, is dean of student affairs at Montana Tech.

JERRY F. KOON, '57, is chief metallurgist for Oregon Metallurgical Corporation, Albany, Oregon.

JEROME B. WEBER, '57, is lead production engineer for Chevron Oil Company, Casper, Wyoming.


DUANE DIEKMANN, '58, is a teacher in Billings, Montana.

DAVID M. CUSHING, '61, is an engineer for Guy F. Atkinson Company, San Francisco. He lives in Los Banos, California.

### SOUTH DAKOTA MINES

MICHAEL A. HIGGINS, '48, is regional manager for York Corporation, Cleveland. His home is in Rocky River, Ohio.

ALVA L. DOUGAL, '50, is a consulting civil engineer with Henningson, Durham & Richardson, Dallas, Texas. He lives in Plano, Texas.

DUANE PAULSON, '51, has been elected president of the South Dakota Mines alumni association. He is an associate with Harold Spitznagel and Associates Inc. of Sioux Falls, being treasurer and head of the structural engineering department. Brother Paulson has been active in NSPE, ASCE, and the South Dakota Engineering Society. He and his wife have two daughters.

ROGER A. STAFF, '56, is supervising engineer in the Industrial Division of Caterpillar Tractor, Peoria, Illinois.

A. L. RIEMENSCHNEIDER, '59, is an instructor of electrical engineering at the University of Wyoming in Laramie.

GARY RADFORD, '60, is an engineer for Reynolds Electrical & Engineering Company, Huntsville, Alabama.

WARREN D. BARNUM, '61, is assistant city engineer for the City of Muscatine, Iowa.

GEORGE D. O'CLOCK, JR., '62, is assistant professor of electrical engineering at South Dakota Mines. He expected to complete his M.S.E.E. requirements in September. Brother O'Clock was formerly a member of the technical staff in the electro-optical labs of Hughes Aircraft Company.

A. J. RICHTER, '62, is a data processing marketing representative for IBM in Minneapolis, Minnesota.

GARY B. MANHART, '63, is an engineer with General Electric in Evendale, Ohio. He lives in Cincinnati, Ohio.

LARRY C. MADSEN, '64, is a graduate student in nuclear engineering at Iowa State University, Ames, Iowa.

LARRY L. PATER, '66, is a graduate student in mechanical engineering at Arizona State University, Tempe, Arizona.

## GEORGE WASHINGTON

**T B**

JOSEPH B. RAGAN, '36, is vice president of operations for Multronics, Inc., Rockville, Maryland. His home is in Potomac.

ALFRED BARAUCK, '47, has been a manufacturers' representative for five years. He lives in Palo Alto, California with his family, which includes a daughter, 12, and a son, 9 years old.

VICTOR L. REDDLE, '49, is a physical scientist for the government in Washington, D.C. He lives in McLean, Virginia.

JOHN C. HELD, '52, is district manager of electronic test equipment sales for General Radio Company, Orlando, Florida. He lives in Maitland, Florida.

EDWARD M. BOOTHIE, '58, received his M.S. degree from Texas A&M in August 1965 under the Air Force Institute of Technology program. He is now serving in Japan as a pilot instrument school instructor.

EDWARD C. DOMBEK, '58, is an electrical engineer working on guided missiles and oceanography for Litton Industry, Silver Spring, Maryland. He lives in Alexandria, Virginia.

VINCENT W. RIDER, '58, obtained his professional engineer's license in December 1965. He lives in Binghamton, New York.

WAYNE A. DAVIS, '60, is a scientific officer with the Defence Research Board, Ottawa, Ontario.

MICHAEL COGAN, '64, is employed by Ampex Corporation, Redwood City, California. His home is in San Mateo.

JOHN T. HALL, '64, is a project engineer at the Army Night Vision Laboratory, Fort Belvoir, Virginia. He lives in Alexandria.

## LOUISVILLE

JOHN B. HARMON, JR., '48, is manager of marketing and contracts for ARINC Research Corporation, Santa Ana, California. He lives in Corona del Mar.

WILLIAM E. DAVIS, '53, is Dayton area corporate representative and sales engineer, industrial group, for Westinghouse Electric Corporation, Dayton, Ohio. He is also an evening session instructor at the University of Dayton

**Δ B**

School of Business. Brother Davis lives in Kettering, Ohio.

WILLIAM L. MCCAMMON, '60, is a project engineer for Firestone, Hopewell, Virginia.

LT. STEPHEN E. HALE, '65, is attending communications officer school at Keesler AFB, Mississippi.

WILLIAM A. MCCULLOCH, '65, is a graduate student in chemical engineering at Kansas State University, Manhattan, Kansas.

J. ROBERT FOWLER, JR., '66, is a graduate student in biochemical engineering at the University of Toledo, Ohio.

RICHARD N. GERSTLE, '66, and JAMES E. HUBER, '66, are both employed in the Polyethylene Department of Dow Chemical Company. Brother Gerstle lives in Angleton, Texas; Brother Huber in Lake Jackson, Texas.

## WAYNE STATE

GERALD A. SCHLEY, '54, is a project engineer for Ford Motor Company, Dearborn, Michigan. He has spent two years on design and development of the Ford DOHC race engine for the Indianapolis 500 and the Championship Circuit, and one year on the 427 light weight for the Le Mans 24-hour race and the Grand Prix Circuit.

**E B**

EARL R. HENDRICKSON, '63, is senior project engineer for Brown-Hutchinson Incorporated, Detroit, Michigan. He lives in Garden City.

ROBERT E. G. LAGODNY, '63, is a die designer for Chrysler at Detroit Forge, Michigan.

## UTAH STATE

**Z B**

ROBERT W. WRIGHT, '62, is head of the Engineering Department for Bannock Pipe Fabricating Company, Pocatello, Idaho.

## HOUSTON

ALBERT CONTRERAS, '62, is a field engineer for Mobil Oil Corporation in Wewoka, Oklahoma.

**H B**

CHARLES M. BERRY, '63, is a production engineer for Continental Oil Company in Abilene, Texas.

RUHI R. BERENT, '63, is Director of Polar Mining & Industrial Corporation, Ankara, Turkey.

LEWIS WHEELER, '63, is a graduate student in applied mechanics at Caltech, Pasadena, California.

THOMAS W. FONVILLE, '64, is a project engineer for the U.S. Army at Dugway, Utah.

## WASHINGTON (SEATTLE)

**Θ B**

HUGO W. SCHIMMELBUSCH, '64, is an associate engineer for the Boeing Company, Seattle, Washington. He planned to enter graduate school this fall.

# DETROIT

# I B

JAMES R. CARROLL, '63, is employed by RMK-BRJ as office engineer in Da Nang, Republic of Vietnam.

WILLIAM J. GOGA, JR., '65, is a designer for Johnson-Air-derson Inc., Pontiac, Michigan.

DONALD R. MORGAN, '65, is a product design engineer at Ford Motor Company's Engineering Center in Dearborn, Michigan. He lives in Warren.

JAMES H. SWELGIN, '65, is on a six-month assignment as an electrical test foreman in the Switchgear Department of General Electric in Philadelphia. He was with the Semiconductor Products Department in Syracuse, New York.

## Contributors to Theta Tau Progress

Theta Tau acknowledges with gratitude the gifts received from the following members:

### UNRESTRICTED GIFT DONORS

Kenneth Adgar, Lambda '62  
Arvid E. Anderson, Lambda '20  
Benny A. Anderson, Zeta '57  
John M. Anderson, Gamma '54  
Phillip A. Anderson, Kappa '32  
Phillip Andrews, Epsilon '33  
T. Louis Austin, Mu '42  
Earl L. H. Bastian, Delta '31  
Charles L. Beckstrom, Psi '38  
Jesse L. Bennett, Epsilon '20  
George R. Benz, Zeta '25  
Clifford Bennett, Theta '47  
Lee C. Bodenhamer, Chi '60  
William W. Brehm, Zeta '23  
John P. Brennan, Chi '43  
George B. Brimhall, Alpha '33  
J. R. Broderick, Kappa '26  
David H. Buerkel, Delta '48  
C. W. Burningham, Lambda '22  
Leopold J. Cantafio, Mu '52  
James B. Chaney, Iota '48  
Albert Contreras, Eta Beta '62  
Earl L. Cottrell, Phi '54  
Fred C. Davis, Rho '28  
Wayne A. Davis, Gamma Beta '60  
Charles H. Dodge, Kappa '24  
John E. Dodge, Gamma Beta '54  
Thomas W. Domville, Zeta '60  
W. G. Donaldson, Epsilon '24  
Robert J. Dorr, Beta '43  
William Ripley Dorr, Alpha '14  
Alva L. Dougal, Omega '50  
John H. East, Jr., Gamma '10  
M. Guy Edwards, Epsilon '21  
Clarence H. Elder, Kappa '25  
Billy Jay Ellerthorpe, Beta '45  
Paul Endacott, Zeta '23  
Fred Stanton Fiedler, Chi '43  
William E. Franklin, Zeta '57  
William S. Franklin, Chi '56  
Laurence L. Fry, Omicron '25  
James W. Garrett, Beta '49  
Vervin R. Gilson, Lambda '47  
C. F. Glass, Sigma '27  
William J. Goga, Iota Beta '65

William H. Gollwitzer, Alpha '65  
Harold F. Greiner, Tau '44  
E. Clinton Griggs, Delta '20  
Daniel E. Groteke, Iota '54  
Robert C. Hadley, Kappa '28  
John Thomas Hall, Gamma Beta '64  
George T. Hanson, Psi '38  
J. C. Happeny, Kappa '24  
Bobby V. Harris, Iota '57  
Robert D. Hayes, Lambda '41  
John C. Held, Gamma Beta '52  
Earl Robert Hendrickson, Epsilon Beta '63  
James G. Hess, Jr., Chi '51  
Lowell A. Hibbits, Iota '33  
Carl S. Hinshaw, Phi '59  
Harold V. Hoffman, Epsilon '57  
Lars Holmquist, Chi '48  
W. Maxey Jarman, Eta '25  
C. Lester Jones, Theta '22  
Richard R. Kapfer, Iota '61  
Rowland King, Beta '16  
Emmett E. Knorr, Sigma '27  
Jerry F. Koon, Psi '57  
Clyde J. Koskinen, Xi '24  
William A. Kruger, Iota '59  
Walter C. Lawson, Beta '23  
Stanley Learned, Zeta '24  
Martin O. Lohman, Chi '57  
George W. Lutz, Omicron '43  
D. A. McGee, Zeta '26  
Donald E. Majer, Psi '41  
Frederick W. Mast, Kappa '33  
Charles Fred Mayfield, Jr., Upsilon '64  
Cloyd R. Mellott, Nu '47  
Stuart S. Merwin, Gamma '52  
Howard E. Miller, Zeta '35  
Eugene B. Millner, Kappa '27  
Louis E. Mohr, Kappa '23  
Richard N. Oishi, Lambda '66  
William H. Olson, Omicron '49  
Elton W. Pace, Lambda '30  
John R. Parker, Delta '36  
Ross I. Parker, Zeta '12  
Gerald F. Pauley, Kappa '27  
Joseph T. Pearson, Jr., Rho '56  
E. N. Pennebaker, Epsilon '24  
Ferman W. Perry, Pi '50  
Robert E. Pope, Zeta '52  
Robert J. Power, Theta '64  
K. W. Powers, Gamma '24  
E. L. Raun, Theta '34  
R. T. Rehtmeyer, Gamma '42  
S. N. Richardson, Rho '49

A. J. Richter, Omega '62  
 James H. Robertson, Jr., Pi '61  
 George W. Robinson, Kappa '24  
 C. E. Rose, Zeta '24  
 James P. Rybak, Delta '63  
 A. Carl Schenck, Mu '34  
 Donald D. Shipley, Chi '54  
 Sanford L. Simons, Iota '44  
 Edward H. Snyder, Beta '11  
 Roger A. Stapf, Omega '56  
 Richard E. Swenson, Alpha '55  
 Lawrence L. Tabor, Epsilon '26  
 James I. Tanis, Beta '56  
 John M. Trissal, Kappa '25  
 William D. Ulrich, Jr., Chi '55  
 Francis E. Vaughn, Epsilon '16  
 Melden E. Volin, Gamma '33  
 Harold C. Weimer, Phi '35  
 George P. Zimmerman, Xi '49

## FOUNDERS' MEMORIAL FUND DONORS

Burton B. Barnes, Epsilon '57  
 George M. Collins, Epsilon '11  
 Earl L. Cottrell, Phi '54  
 Jacob Erickson, Chi '31  
 Armin F. Fick, Iota '41  
 Robert A. Gerlicher, Alpha '28  
 Richard Carl Gibbons, Upsilon '65  
 Reo E. Goodwin, Iota '47  
 Ralph McGoey, Epsilon '27  
 Ferman W. Perry, Pi '50  
 Gary A. Radford, Omega '60  
 Robert W. Rupe, Chi '59  
 Frank P. Tagliamonte, Omega '57  
 Lester C. Thomas, Gamma '12

## 25 and 50 Years Ago in Theta Tau

### 25 YEARS AGO

Plans were announced for the Fifteenth Biennial Convention to be held in St. Louis.

The Editor reported some daring predictions concerning the future of television and interplanetary space travel.

Theta Chapter celebrated its twenty-fifth anniversary (not counting two years of inactivity during World War I).

The brothers of Delta Beta Chapter remodeled their house themselves during summer vacation.

The Los Angeles Alumni Club reported a great demand for engineers in the defense industry there.

(From the Fall 1941 GEAR)

### 50 YEARS AGO

Gamma Chapter reported returning from the Convention in Cleveland to find that the State of Colorado had gone "dry."

Delta Chapter hosted the Third Biennial Convention, substituting at the last moment for Epsilon Chapter.

Iota Chapter reported on some campus traditions, including the mandolin club and green caps for freshmen. No students but seniors could wear mustaches or beards.

The Editor reported on the growth of Theta Tau, with ten active chapters and four alumni associations.

(From the 1916 GEAR)

## CONVENTION SOUVENIRS, THETA TAU MATCHES AND PENS AVAILABLE

If you missed the last Theta Tau Convention, you can still obtain one of the Sixtieth Anniversary souvenir glass trays provided each member attending the Convention Banquet—a lasting memento of a historic Theta Tau occasion. This is a fine desk accessory featuring the Fraternity coat of arms in gold with appropriate inscription—ideal as an ash tray or for clips, stamps, etc. It also makes a nice remembrance for a Theta Tau brother. Also available postpaid are special Theta Tau book matches and gold-colored ball point pens appropriately imprinted.

Sixtieth Anniversary souvenir tray \$1.00

Theta Tau matches (50 books/box),

1 to 5 boxes .80 each

6 or more boxes .75 each

Theta Tau ball point pen .40

Payment should accompany order sent to the Theta Tau Central Office, 13 Sona Lane, St. Louis, Missouri 63141.





## Chapter News

The chapters were requested to write about their professional development programs for this issue of THE GEAR. In keeping with the purpose of Theta Tau, each Chapter is expected to hold professional development meetings regularly. The format and nature of topics may vary, but the emphasis is supposed to be professional as opposed to technical.

Using a single theme focuses attention on one aspect of the chapters' activities. It allows chapters to exchange ideas; alumni can also see how their own chapters' programs compare to the other chapters.

Two threads of continuity seemed to the Editor to stand out. First, most chapters try to do something to promote National Engineers' Week. This is encouraged. Second, the chapters have a variety of programs, and attempt to have a broad topic coverage from the Peace Corps to proper dress. This is certainly in keeping with the objectives of the professional development program.

A swinging professional development program seems not to be complete without a tour of the local brewery. The students who wrote about this may be surprised that other chapters thought of this idea too; and as an early member of Epsilon reminisces elsewhere in this issue about years gone by, it is also obvious that our present generation didn't invent this latter activity.—WEF

### ALPHA CHAPTER



Alpha Chapter believes in a variety of leadership and development programs. We usually invite representatives from well known businesses in the Minnesota area to come talk about their companies. Several members have received excellent summer jobs through these programs. However, for one program we had a dance instructor and for another we took a tour of the Grain Belt brewery.

Coming up this quarter we will have a representative from the Peace Corps and a tour of Honeywell.

Founders' Day was celebrated on Monday, October 17 at the Edgewater Inn in Minneapolis. Robert E. Pope, Grand Scribe, was present and later in the evening came to the chapter house to discuss plans for the upcoming national Convention. We at Alpha Chapter are eagerly awaiting the opening of the Convention and the opportunity to meet many of our brothers of Theta Tau.

LAWRENCE C. WELLIVER  
Corresponding Secretary

### EPSILON CHAPTER



Epsilon Chapter is still in its rejuvenating stage. A year ago there was only one active on campus, but today we are six conscientious, hard working members.

At this time our main concern is to increase our membership with men worthy to wear the Theta Tau badge. In this effort, however, we are not alone. Our representative to the Engineering Joint Council (an association of representatives from all of the engineering societies) has been receiving good cooperation. Furthermore, our adviser, Dr. James Carman, and Jack Payne, Special Representative for California, have also done much to further our redevelopment.

This fall as our first activity of the year, Epsilon Chapter will sponsor a tour of the Radiation Laboratory and other scientific facilities.

Even though our Chapter is small, our spirit is without bound. We are confident that before this quarter expires, Epsilon Chapter will have once more become the great Chapter it once was, both numerically and in quality.

GEORGE ALEXANIAN  
Corresponding Secretary

### ZETA CHAPTER



This year Zeta Chapter's professional development program consists of inviting speakers to the chapter house for dinner. Although most of these speakers are from the engineering faculty, we do try to invite some non-engineering speakers in order to broaden our knowledge in other subjects. After the dinner there is usually a general discussion with the speaker about his field or topic. This kind of program has proven to be our most effective form of professional development function.

The Founders' Day celebration this year at Zeta Chapter was the result of work by both the professional development committee and the rush committee. Rush guests were invited in addition to alumni. Several alumni were able to attend. We believe that the banquet was quite successful both as a Founders' Day celebration and as a part of our rush program, since it gave the rush guests an opportunity to meet some of our Theta Tau faculty members and alumni from the Kansas City area.

Zeta Chapter is now working with the Engineer-



ing Council at Kansas University to co-sponsor the National Engineering Week activities at KU. Because of the interest of the council and the ideas that the Chapter can furnish, we believe that it should meet with more success than in past years. Our future plans include Engineering Homecoming and our annual Women Engineers' Banquet.

DAVID WOOLSEY  
Corresponding Secretary

## IOTA CHAPTER



Every department of the University of Missouri at Rolla has one or more societies which concentrate on the professional development of the students through the use of speakers from industry and panel discussion programs. Rather than adopting another

similar program, Iota Chapter is striving to promote a spirit of "professionalism" through several new and different activities.

Our most successful project of this sort at present is our Freshman of the Year Contest. As the name implies, this award is presented to the individual who, after his first year, shows the greatest promise of becoming an outstanding engineer. As success in the business world depends on leadership as well as intelligence, we look not only at grade-point but also at the extracurricular activities of the applicants. Anyone may apply, and final selection is made by the members of Theta Tau. In many instances the recipient is also considered for pledging to our Fraternity. Through the years this presentation has come to be regarded as one of the greatest honors which can be bestowed on the up and coming engineering student.

To further stimulate professional interest on the UMR campus, Iota Chapter has plans for initiating a number of other interesting programs. One is the establishment of the Theta Tau Engineer Magazine. It would contain non-technical articles on current engineering topics, as well as reports of campus research projects and possibly some humor and athletic reports. Theta Tau feels a publication of this type is greatly needed and would be well received by the students. The only stumbling block at present is sufficient finances to support the initial expense.

To emphasize National Engineers' Week, we are hoping to cooperate with McDonnell Aircraft of St. Louis in presenting a display of their engineering achievements in the manned space flight program. We are fortunate in being located so close to this industry, and feel that there would be no better way to publicize this week.

GLENN ALEXANDER  
Corresponding Secretary

## LAMBDA CHAPTER



The majority of Lambda's activities center around the professional development program. At the University of Utah, we feel that Theta Tau's greatest contribution to the individual comes through professional development. It is our practice to have a speaker at each of our

weekly noon meetings. The meetings are open to provide maximum benefit to the pledge class. Several times a quarter we hold a night meeting and invite a speaker of special importance. For example, last spring Prof. Mack Kesler, *Lambda '37*, explained with slides Salt Lake City's Twentieth Century plan. A lively discussion ensued over the merits of downtown development vs. expanding suburbia. Another practice is to have a student member speak on some subject of importance to him. In general, the topics covered deal with a subject of interest to all branches of engineering and often include topics outside of the discipline. The professional development program is guided by a three-man committee headed by Gaylord Gardner.

Last April 28 Lambda held its annual Chapter Anniversary Banquet. The meeting featured an address by James W. Funk, *Lambda '29*, on the early contributions of Lambda Chapter to the college and university. It appears that in the "good old days" the engineers ran the campus and Theta Tau ran the engineers. The banquet ended with a rousing chorus of "St. Patrick was an Engineer."

The first major activity of this quarter was the Engineering College Oyster Stew. True to our winning tradition, Lambda swept the bowling, volleyball, and swimming competition.

RICHARD BROWN  
Corresponding Secretary

## XI CHAPTER



During the past semester, Xi Chapter decided to divide its office of activities chairman into the offices of social chairman and professional development chairman. It was felt that this would help our professional program, which had often been inadvertently lacking. The success of this move has been shown this semester in our full schedule

of professional activities.

Our primary professional function is sponsoring professional speakers. These speakers are usually outstanding faculty members or prominent individuals in the Madison area. Their topics range from the highly technical to subjects of general interest. These may be presented at chapter meetings, combined pledge and active meetings, rush functions, or all-campus forums.

## THE GEAR OF THETA TAU

In addition to these, the Chapter has initiated the practice of having a joint pledge-active dinner each semester. At this meeting, one of the actives or pledges presents a program which usually includes slides or films. Some previous topics have been water skiing and military missiles.

Just this semester we have been invited to dinner meetings of the Wisconsin Society of Professional Engineers. This has brought us into contact with an outstanding professional group and aided our own program. Also, later on this semester we plan to have a panel discussion at one of our active meetings. Instead of just listening, this will involve our men actively.

The Biennial Engineering Exposition will be held here again this spring. Xi Chapter will enter a project concerned with bio-medical engineering and feedback control systems. Quite an effort will be put in on this because we will be defending our first place trophy won two years ago.

This is the first year we have had a chapter house and it is working out very well for us. The house, at 1635 Monroe Street, has provided us with both a meeting place and a site for parties and entertainment. Negotiations are now under way for the purchase of another house for next year. This will move us from the status of renters to owners and will be a big step in the history of Xi Chapter.

THOMAS F. SCHUPPE  
Corresponding Secretary

### PI CHAPTER



The professional development program of Pi Chapter is carried out each year at our two banquets. The fall banquet is held after the initiation of our new brothers, while the spring banquet is given in honor of our new pledges. The topics covered at these banquets are usually of the non-technical type. They also generally pertain to all branches of engineering equally well. Our most recent topics included "Reasons for Becoming a Professional Engineer" by Dr. Henry L. Kinnier, and "The Benefits of a Graduate Business Education for the Engineer" by Dr. William F. O'Dell.

The brothers of Pi Chapter encourage all engineers to attend the meetings of the five engineering societies at the University. These societies have both speakers and films on topics of specific interest to students in their respective departments and are usually technical.

In an effort to enlighten the first year engineers in the field of student government at the University, the brothers of Pi Chapter prepared a pamphlet and hand delivered it to every one of these students. This eight-page circular explained the duties and responsibilities of every Engineering School student office holder. The Engineering Council, Student Council, Judiciary Committee, and Honor Committee were described. The pamphlet also contained a list of the current members of these groups, including their addresses and telephone numbers.

Pi Chapter's Founders' Day celebration consisted of a cocktail party held after the Homecoming football game on October 15. Many thanks went to Steve Jaques and Charlie Johnson, who supplied their apartment for the affair, and to Dave Dando, who took care of the entertainment.

PETER M. VAUGHN  
Corresponding Secretary

### RHO CHAPTER



Rho Chapter maintains an active professional development program. We strive for at least six professional development meetings each year.

About half of these meetings are attended by brothers only, and the other half by brothers and their dates. Such meetings usually take the form of banquets followed with presentations by dinner speakers covering a variety of topics. These topics concern aspects of professional development, especially as related to engineering fields.

Topics for these presentations cover such subjects as consulting engineering, the role of science and technology in today's society, and the ethics and professionalism of engineering. This variety gives the brothers an insight into their chosen professions as well as an idea of the importance of engineering as a profession.

Our speakers come from different fields, but the majority are engineers or are in engineering-related professions. One new idea for speakers this year is to contact company representatives who are on campus at various times interviewing students for jobs.

This year's celebration of Founders' Day included a banquet for the brothers and new pledges, followed by a speech by Mr. R. B. Rice, secretary of the N. C. Board of Registered Engineers and Land Surveyors, concerning registration and professionalism in engineering.

Professional development has added much to Rho Chapter.

STEVE A. FOX  
Corresponding Secretary

### SIGMA CHAPTER



At Sigma Chapter, our leadership and professional development (L&PD) program is of prime importance. Last spring about 25 members and pledges participated in a plant trip to North American Aviation in Columbus. One of our guides was Fred Hessman, Sigma '62.

Many of our L&PD functions are dinners with the program following the dinner. Rushees are frequently invited to these functions. The most recent after dinner function was a program by three engineers from Du Pont, one of whom was William Wolf, Sigma '61. With the help of some charts and slides, the three engineers

explained some of the processes at Du Pont and the individual responsibilities of the engineer. However, not all of the L&PD functions are wholly technical. Professor Fenton of the Electrical Engineering Department will soon attend a dinner here and give a talk on wine making.

Our L&PD chairman, Mike McConnell, is coordinating the functions this year. Several of the members have invited their summer employers to the house to speak. This procedure has been very successful in the past in setting up L&PD functions. Another good source for our programs has been the approximately 100 Sigma alumni in the Columbus area.

On the social side, Sigma Chapter entertained several alumni at a coffee-and-doughnuts open house on Founders' Day. Two weeks later the Chapter held its annual Homecoming party. The party was attended by some 22 brothers and their dates, and two alumni, and was deemed a very swinging party. The annual hayride is coming up soon.

A special project has been initiated this year at Sigma Chapter under the direction of Ron Dowell. A tutoring service held weekly on campus for three freshman courses is being made available by Sigma Chapter. Six or more brothers participate in this project. The tutoring service not only increases Theta Tau's contact with freshmen, but also is a service to the Engineering College.

Brothers Dowell, McConnell, Thurston, and Dandalides collaborated this summer to produce a 12-page booklet about Sigma Chapter to be distributed to over 800 engineering students. The booklet is intended to help in a concerted drive for new pledges; it will contain an invitation to a rush function to be held in January, along with a prepaid reply card. We hope that by this concentrated effort we can make a good increase in the size of Sigma Chapter.

RONALD A. SCHWARTZ  
Corresponding Secretary

### TAU CHAPTER



Tau Chapter's major professional development activity of the past year was the attendance of many brothers at the Syracuse Engineers' Dinner during National Engineers' Week. Several hundred local engineers, their wives, selected high school students interested in engineering, university faculty, and brothers of Tau Chapter were in attendance. We have also held several professional development programs after evening meetings. Films about engineering borrowed from the university and the Air Force were shown.

This year professional development program planning has been switched from an activity committee to a professional development chairman. We have several visitations and other professional activities in the planning stage. Most of our brothers belong to professional societies on cam-

pus such as ASME and IEEE. These offer lectures, visitations, and similar programs.

ROBERT M. FENICHEL  
Corresponding Secretary

### UPSILON CHAPTER



Upsilon Chapter is greatly concerned with the professional development of its members. Twice each semester, speakers are invited to talk to the members and pledges in an open meeting. The programs presented are

ones which the professional development chairman feels will be most beneficial to the members. For example, last semester Dr. Adkisson, dean of the Graduate School, spoke on possibilities for graduate education, and Dr. Webb, assistant head of electrical engineering, spoke on careers in the teaching profession. In addition, last spring material was posted around campus to publicize National Engineers' Week.

Our Chapter is again enjoying a very active and exciting year. Founders' Day was celebrated October 16 with a banquet held at the Trade Winds Motel. Initiation of pledges was held Sunday, October 23. Furthermore, the pledges and actives are very busy this month refinishing part of the inside walls and painting the outside of our fraternity house.

WALTER JENNINGS  
Corresponding Secretary

### PHI CHAPTER



Phi Chapter's professional development program is aimed at widening the interests and deepening the knowledge of its brothers. We also incorporate the programs into our rush program. We have found the programs usually interest the rushee and at the same time show our professional interest.

Our programs start with a pre-dinner informal talk with the guest speaker. This chat relaxes the guest and acquaints him with several of the brothers. After the formal dinner, the guest addresses the brothers and any rushees present. He usually talks thirty to sixty minutes and then answers any questions. The topics covered are as varied as the interests of the brothers. The topics range from the new morality to drag racing to a new style of engineering writing. One valuable source of programs is companies interviewing on campus. These people are usually glad to speak to the brothers and present their stories to us.

Perhaps our most effective program is the one given by an honorary member, Prof. A. R. Spalding, head of the Department of Freshman Engineering at Purdue. Prof. Spalding gives his program shortly after informal rush starts in the spring. In his talk he emphasizes the pros and cons of fraternities and especially those of Theta Tau.

## THE GEAR OF THETA TAU

Our professional development programs are organized by an appointed chairman. The duties of the chairman are the investigation of possible sources for programs and the introduction of the speaker during the program.

Our plans for this semester have been somewhat cramped by the many other activities of our Chapter. We normally attempt a program every four weeks, with a greater concentration shortly before formal pledging begins.

Our Chapter is especially looking forward to this Homecoming, October 29. Phi is sponsoring an open house with a live band. The weekend promises to be an exciting one both for the present brothers of Phi and for the alums journeying back to their one-time home.

PAUL DOANE  
Corresponding Secretary

### CHI CHAPTER



The keyword at Chi Chapter seems to be expansion this semester. We have increased our membership to very nearly 50, and have bought a new house which doubles our capacity to house our members.

Last semester, thanks to Rick Brusch, we obtained a computer

program to obtain names of prospective rushees from registration lists at the University. Using this new system, we pledged 25 men. John Moody did an excellent job as pledge trainer, and in May we initiated 21 of these men. Even with the toll taken by graduation, we still are very close to our limit of 50 men. We have just finished rush this semester, and we could take only ten of the 18 men who rushed.

Last spring, we were also informed that the University planned to buy our house to make room for expansion, and we began to look for new quarters. With the help of alumni Andy Marum and Albert Hamilton, we succeeded in finding a house near the University with the capability of housing 14 men. Negotiations took place and we took possession on September first. The house consists of six apartments complete with cooking facilities, and the men living there seem quite pleased with it, especially since it is directly behind a sorority.

Chi Chapter held its Founders' Day celebration on Sunday, October 16 at the new house. The alumni and their wives provided the food for a buffet-style banquet which provided an excellent opportunity to meet the alumni and to show them our new house.

We are looking forward to the Convention this December, and are now making plans to attend.

EDWIN LANTZER  
Corresponding Secretary

Chi's new chapter house is appropriately designed for the University of Arizona atmosphere.



Chi members taking refreshments after the annual pledge-active football game in the desert.

## OMEGA CHAPTER

RAPID CITY  
S.D.

Omega Chapter's professional development programs are organized by our professional development chairman and his committee. Pledges and alumni may attend these professional programs and are urged to do so. The programs throughout the year cover many different topics. We have had many interesting meetings discussing mutual funds and investments, ethics of an engineer in modern industry, proper dress for the college man, and what to expect going into industry.

One topic is discussed at each meeting and a professional person who is knowledgeable about the topic is the featured speaker. The meetings end with a question and answer period and group discussion.

Omega Chapter promotes National Engineers' Week very heartily on the campus of SDSM&T. Last year Theta Tau was instrumental in obtaining Dr. Erdle from the Air Force Academy to present an address at a banquet for professional men of Rapid City. The address was open to the students of SDSM&T. Omega Chapter advertised the program and National Engineers' Week with posters on campus and with TV and radio. A very large turnout was the result.

Omega Chapter of Theta Tau won third place last spring in the campaign to make Rapid City an All-American City. The brothers worked together to tear down an eyesore at the edge of the city.

Of the fraternities on campus, Theta Tau posted the highest grade point average for last semester. Our Chapter was also above the all-school average.

DEAN P. EDMUNDSON  
Corresponding Secretary

## DELTA BETA CHAPTER



The fall quarter has always been a busy one for the brothers of the Delta Beta Chapter, and this one is no exception. With the arrival of a new class we once again revived our program of tutoring the freshmen. As both a part of our professional development and rush programs, we feel that it is important to help them receive the right start for the years ahead.

The first week of the fall quarter also marks the beginning of the many weeks ahead in preparing for Engineers' Day. This is the day that the Engineering School opens its doors to the general public to show them how the various engineering fields affect them. Well over 90 percent of the Chapter members will be participating this year, with many displays designed by its members.

Two weeks before Engineers' Day the campus

will be alive with activity as the University of Louisville once again celebrates football Homecoming. This year the Chapter is going all out to win the trophy for best house decoration.

This year the Chapter celebrated Founders' Day in a little different way. As part of our celebration we took 20 orphans, ranging in age from 10 to 13, to a football game along with many of our alumni.

As a closing note, the big red house will be no more. Since 1949 the Delta Beta Chapter has owned its own house. In October we will sell it to urban renewal and will temporarily be relocated with the hope of buying a new house within two years.

JOEL S. SCHWARTZ  
Corresponding Secretary

## EPSILON BETA CHAPTER



Professional development at Epsilon Beta takes on many different forms. It can range from an informal get-together with some alumni to a guided tour through an industrial plant.

Our alumni group carries on a continuous professional development program. That is, knowledge gained through "bull sessions" with our alumni is often very useful to the student engineer. It gives the actives an insight into what the professional world expects of a young engineer and so serves as a guide as to which courses we should elect to better equip ourselves for the "outside world."

Epsilon Beta has engaged in field trips to several industrial plants in the Detroit area ranging from the automated Ford engine plant to the Hiram Walker brewery. Needless to say, the latter was well received by all those who recognize the value of a strong professional development program.

Our professional development program endeavors not only to broaden our engineering experiences, but also to develop leadership qualities so important to the "upward bound" engineer. We therefore include under professional development that Theta Taus hold every office but two on Wayne's Engineering Student Faculty Board. The vice president and treasurer of Tau Beta Pi are Theta Taus, as are the vice president and corresponding secretary of the IEEE. The editor of the *Wayne Engineer* is also a Theta Tau. We encourage active participation in all societies as we firmly believe that leadership experience obtained in school will be invaluable upon graduation. This, after all, is the goal of our professional development program—to give the student knowledge of and better equip him for the engineering profession.

ANTHONY FILIP  
Corresponding Secretary



## ETA BETA CHAPTER



Eta Beta Chapter had a very successful year. The highlights of last year included Founders' Day, intramurals, Chapter Anniversary, various parties, and National Engineering Week.

For National Engineering Week, each branch was responsible for an exhibit, which was on display for one day. A few of the exhibits were plant layouts, refinery model, bridge structures, and an external heart pump. The high point of National Engineering Week was a talk given by Mr. Matt Quinn, an electrical engineer from NASA. His talk covered engineering in space and the Apollo space flight, for which he is in Mission Control. He also showed films on rocket and power plant development.

Eta Beta's fall rush was the most successful in our history. Fall rush consists of three parties, the first of which is a smoker where the rushees meet and talk with the actives. For our second party, we had a field day. This is the most informal part of rush and gives us a chance to see the rushee being himself. The final rush activity is a date party which was one of the best parties we have had this year.

The brothers of Eta Beta are looking forward to another busy year. We are now actively engaged in intramural football, hoping to better our fourth place in all-school record last year.

ROY SMITH  
Corresponding Secretary

## THETA BETA CHAPTER



We have approximately five professional development meetings per quarter. Considered on a yearly basis, half of these meetings are devoted to industrial tours and half are speaker programs. It is our policy to

strive for a diversified professional development program. We accomplish this by including topics from both engineering and non-engineering areas. Representing the non-engineering area last quarter was a speaker from the Federal Bureau of Investigation and one from a campus objectivist organization.

We find that industrial tours are the most popular aspect of our professional development program. Our most popular tours have been: a trip through the Intalco aluminum smelting plant, which, when it is completed, will be the third largest plant of its kind in the world; a tour through the facilities of the Pacific Northwest Bell Telephone Co.; and especially a tour conducted by a very lovely young lady through the local Sick's Rainier Brewery. The latter was one of our best-attended tours.

As for our plans for this year, we intend to continue with our industrial tour program and our speaker program including some non-engineering topics.

We at Theta Beta Chapter do not limit ourselves

to the professional aspect of Theta Tau. We are in the process of designing an emblem for our Chapter members' blazers. We also celebrate both our Chapter Anniversary and Founders' Day. The former consisted of a steak dinner followed by dancing. During the dinner each member and his date were presented with a monogrammed brandy snifter that was duly initiated during the following proceedings. At our Founders' Day banquet, which was held in conjunction with the Pacific Northwest Alumni Association, we were pleased to have in attendance Elwin L. Vinal, one of our Founders. Dr. Anderson, director of the Concrete Technology Corp., was the guest speaker. Dr. Anderson toured Russia as part of a technical mission for the State Department. His speech which was accompanied by slides was based on this trip.

A moment of silence was observed for the late Professor Roy A. McCready, Psi '39, who was our Chapter Adviser. We at Theta Beta are greatly indebted to Professor McCready for his assistance in organizing and sustaining Theta Beta Chapter.

ALAN R. WOLFLA  
Corresponding Secretary

## IOTA BETA CHAPTER



During the past few weeks, Iota Beta Chapter has been active in all aspects of University life. Iota Beta has been continuing in its goal to make the engineering student an integral part—professionally and socially—of the University activities.

To facilitate the professional integration, Iota Beta Chapter is sponsoring a series of discussions pertaining to the engineer of today. The first program will consist of a discussion on "Professionalism and what it means to you." The speaker will be our moderator, who by his *curriculum vitae* is more than qualified to speak of professionalism today. The purpose of the discussion is to help the members grasp the full meaning of professionalism so when the subsequent talks occur, we may foster interest among other engineers.

Our first open meeting speaker will discuss "Professional Registration in the State of Michigan" and "The Importance of Performance on Grad Record Examinations." Again we are fortunate to have a well qualified speaker for the subject. He is a patent lawyer who also holds a bachelor of civil engineering degree and professional registration in mechanical engineering, and sits on the Board of Professional Registration in the State of Michigan. This discussion is aimed primarily at senior engineers, but underclassmen engineers can also profit.

Other lectures are in the planning stages. We also hope to invite several persons such as engineers in industry and engineers in teaching, so we may hold a panel discussion. This idea stems from the fact that industry wants practical engineers,

yet often they say colleges produce theoretical engineers.

Along with our speakers program we have made available NSPE publications.

Socially, these past weeks we have had rush parties, smokers, and stag parties. All who attended these functions reported a good time.

For Founders' Day, two alumni have offered their hallowed domain for fraternization. Here alumni of Chi Sigma Phi, now Iota Beta Chapter of Theta Tau, actives and all brothers of Iota Beta will gather and exchange old times and good wishes for the future.

Also being athletically apt, Iota Beta Chapter is making a concerted effort for the intramural overall sports trophy. So far we've gone unbeaten in tennis, placed second in softball, showed well in track and field events. Football is yet to come. We expect to be particularly strong here, led by our signal-calling Regent. But as with all our efforts, only time will tell.

SPENCER J. J. RAINEY  
Corresponding Secretary

## KAPPA BETA CHAPTER



The greatest element of news that should be reported is that we have now obtained a chapter house. The house was rented last spring, and is now being used as a permanent chapter headquarters with four of the five elected officers living in it. It is a six-bedroom structure built by the owner especially for use by

college men, and we were fortunate to be able to rent it this fall.

We have initiated Franklin Ingels as an honorary member. Brother Ingels has been appointed to the position of chapter adviser by Grand Regent Rey following the departure of our previous adviser, Claud Irby, to the University of Alabama to do graduate work.

We celebrated Founders' Day at the house. We held a short ceremony in which the Ritual Chair-

man presented the program which he had prepared. We were pleased to see Brother Irby at the meeting. After the program we all adjourned to the banquet rooms on the campus to feast on a delicious meal which had been prepared.

We have pledged a fine group of men, all of whom we think are outstanding. We hope this is the beginning of a long and useful friendship with Theta Tau for them, and a great potential for us. Under the leadership of these men the Fraternity should go far here at Mississippi State.

THOMAS H. PARKER  
Corresponding Secretary

## GMI COLONY

Several professional activities are held each semester and provide an excellent means of broadening a member's interests and knowledge beyond the normal academic program. Usually, the activities consist of a dinner meeting open to members, pledges, and selected faculty members. A professional speaker is invited to the dinner and is introduced by the President following the meal. We feel that our activities have been especially effective due to the wide variety of subjects covered. For our last program a speaker from the Michigan Water Resources Commission discussed the timely topic of water pollution and conservation. Previously, a bank specialist described the types and effects of bank robberies.

Of course, many of the topics are more technical in nature, such as the talk given by a chief design engineer on the development and testing of the Chevrolet Mark IV high performance engine. These events are organized for each section by our professional activities chairman.

During business meetings this fall, both student sections have given voted approval to the proposed purchase of a colony house to provide residence for six members. All business meetings and other activities will then be held in this house. Also, members may go there to study or relax in fellowship with other members.

KEITH PIEPER  
Corresponding Secretary  
B Section

# Additions to Membership

## ALPHA CHAPTER

- 780 Kenneth Howard Beck, Morris, Minn.
- 781 Keith Allen Christophersen, South St. Paul, Minnesota
- 782 James Terry Lee, Rochester, Minn.
- 783 Gary Lamont Nereson, Thief River Falls, Minnesota
- 784 Orville Joseph Rinehart III, Rochester, Minnesota
- 785 Thomas Michael Rohde, Rochester, Minn.
- 786 Richard William Roome, Minneapolis, Minnesota
- 787 Donald James Rounds, Bertha, Minn.
- 788 Lawrence Charles Welliver, Richfield, Minnesota

## BETA CHAPTER

- 966 Michael Gene Hoganson, Stevensville, Mich.
- 967 Joseph Paul Epley, Plymouth, Mich.
- 968 Raymond Wayne Cox, London, Ontario
- 969 Ronald Eugene Starr, Islington, Ontario
- 970 Bill James Janeshek, Kingsford, Mich.
- 971 David Jonathan Paduan, Waterville, Maine
- 972 Eugene Ronald Wejrowski, Auburn, Mich.
- 973 Glenn Willard Mikko, Detroit, Mich.
- 974 John Ricker, Harvey, Ill.
- 975 David Frederick Confrey, Winnipeg, Manitoba

## THE GEAR OF THETA TAU

### GAMMA CHAPTER

- 1057 Michael Kay Greenburg, Golden, Colo.
- 1058 Charles Allen Milligan, Big Piney, Wyo.
- 1059 Jerold Richard Lowder, Wheat Ridge, Colo.
- 1060 James Lawrence Kyle, Honolulu, Hawaii
- 1061 Parker Eugene Newbanks, Jr., Wray, Colo.
- 1062 Kenrick Algrid Charles Pocius, Pueblo, Colorado
- 1063 Thomas Joe Garner, Casper, Wyo.
- 1064 John Winters Walker, Jr., Midland, Tex.
- 1065 James Lee McDaniel, LaJunta, Colo.
- 1066 David Richard DeLaney, Denver, Colo.
- 1067 Thomas Steven Elliott, Denver, Colo.

### DELTA CHAPTER

- 1063 Kenneth Edward Buse, Saginaw, Mich.
- 1064 Ronald Michel Hamrah, Brooklyn, N.Y.
- 1065 Frank Alan Maas, Cleveland, Ohio
- 1066 Robert Charles Meltzer, Houston, Tex.
- 1067 Steven Joseph Merker, Lyndhurst, Ohio
- 1068 James Richard Misch, Port Clinton, Ohio
- 1069 Michael Patrick Murray, Euclid, Ohio
- 1070 Wayne Fredrick Niskala, Cleveland, Ohio
- 1071 Frank Charles Sillag, Lyndhurst, Ohio
- 1072 Daniel George Wolf, Erie, Pa.

### EPSILON CHAPTER

- 871 George Alexanian, Oakland, Calif.
- 872 Jay Robert Doubrava, El Cajon, Calif.
- 873 Neal Kazuyoshi Matsunaga, Honolulu, Hawaii
- 874 Harold Joseph Orr, San Pablo, Calif.

### ZETA CHAPTER

- 690 Conrad Dudley Wagenknecht, Lawrence, Kansas
- 691 Rene Rivero Azcui, La Paz, Bolivia
- 692 John Asbury Zimmerman, Kansas City, Mo.
- 693 Paul Edward Berger, Kansas City, Mo.
- 694 Alfred Frank Burkle, Kansas City, Kans.

### THETA CHAPTER

- 709 Alan Leonard Bernstein, Brooklyn, N. Y.
- 710 Henry Gus Berszinn, Brooklyn, N. Y.
- 711 Andrew Gaspar, New York, N. Y.
- 712 Stephen Paul Gilbert, Bronx, N. Y.
- 713 Ta Mei Li, Princeton, N. J.
- 714 Stephen T Wang, New York, N. Y.
- 715 Lewis John Zackin, New Britain, Conn.

### IOTA CHAPTER

- 1029 Raymond Arthur Behrens, Pine Lawn, Mo.
- 1030 Robert S Bruce, Eldorado Springs, Mo.
- 1031 Tom Lowell Cadwell, Alton, Ill.
- 1032 Jerome Dickens Coleman, Jr., Prairie Village, Kansas
- 1033 Charles Jerome Fehlig, Shrewsbury, Mo.
- 1034 Robert Clarence Pick, St. Louis, Mo.
- 1035 Wayne John Filichowski, St. Louis, Mo.
- 1036 Frank Frederick Fix, St. Joseph, Mo.
- 1037 Michael Currier Fridley, St. Charles, Mo.
- 1038 Louis Barry Goldfeder, Olivette, Mo.
- 1039 John Bernard Mitchell, St. Louis, Mo.

- 1040 Charles Henry Painter II, St. Joseph, Mo.
- 1041 Nixon Alfred Pendergrass, Edwardsville, Illinois
- 1042 Richard Alex Perkins, Milford, Ill.
- 1043 Richard Charles Vedder, St. Louis, Mo.
- 1044 Arthur Anthony Verdi, Waukegan, Ill.
- 1045 Charles Henry Weniger, Richmond Heights, Missouri

### LAMBDA CHAPTER

- 866 Jerry Reid Boggess, Midvale, Utah
- 867 Steven Frank Boll, Salt Lake City, Utah
- 868 David Jeffrey Burton, Salt Lake City, Utah
- 869 John Monroe Collins, Salt Lake City, Utah
- 870 Charles Marlow Cummings, Salt Lake City, Utah
- 871 Gaylord Woodruff Gardner, Salt Lake City, Utah
- 872 James Dennis Green, Salt Lake City, Utah
- 873 Douglas Harrison, Salt Lake City, Utah
- 874 James Richard Hawkins, Salt Lake City, Utah
- 875 Dene Joseph Kesler, Salt Lake City, Utah
- 876 Earl Gilbert Lagergren, Salt Lake City, Utah
- 877 Richard Tokuo Matsuno, Salt Lake City, Utah
- 878 Gary Bruce McNally, Salt Lake City, Utah
- 879 Henry Michael Mills, Salt Lake City, Utah
- 880 Brent Leslie Neilson, Salt Lake City, Utah
- 881 Bruce Ray Philpott, Turlock, Calif.
- 882 Gordon Roman Schmitt, Salt Lake City, Utah

### MU CHAPTER

- 873 Herbert Charles Armor, Brookwood, Ala.
- 874 William Ryan Barringer, Tuscaloosa, Ala.
- 875 John Steve Biggs, Chickasaw, Ala.
- 876 Robert Michael Dennis, Clanton, Ala.
- 877 Barry Trammell Hendon, Birmingham, Ala.
- 878 William Lane McCollum, Tusculumbia, Ala.
- 879 Jerry Nixon Smith, Tuscaloosa, Ala.
- 880 Michael Onan Sutton, Cullman, Ala.
- 881 James Paul Vinson, Tuscaloosa, Ala.

### XI CHAPTER

- 303 William Fredric Pfeiffer, New Holstein, Wisconsin

### RHO CHAPTER

- 724 Kenneth Mauney Barnes, Kings Mountain, North Carolina
- 725 Everette Clarence Byrd, Norwood, N. C.
- 726 Michael Warren Clary, Petersburg, Va.
- 727 William Ottis Tyndall, Jr., Salemburg, N. C.

### SIGMA CHAPTER

- 603 Raymond Antoine Foisset, Mansfield, Ohio
- 604 Michael Edward McConnell, Gahanna, Ohio
- 605 Conrad Joacium Palumbo, Painesville, Ohio

### TAU CHAPTER

- 672 Robert Thomas Stinson, Skaneateles, N. Y.
- 673 Thomas Ralph Etter, Syracuse, N. Y.

- 674 Robert Martin Fenichel, Nutley, N. Y.  
 675 Philip Stephen Podworny, Westtown, N. Y.  
 676 Ronald Joseph Sidor, Rochelle Park, N. J.  
 677 James Ronald Suarez, Brooklyn, N. Y.  
 678 Michael Angelo Carchia, Jr., Wakefield, Massachusetts  
 679 Brewerton Hedges Clarke, Jr., Clinton, New York  
 680 Rodger Clayton Melling, Solvay, N. Y.  
 681 Peter Denny Willis, Tonawanda, N. Y.

### PHI CHAPTER

- 405 Steven John Balser, Foster, Ohio  
 406 Robert Keith Blandford, Tell City, Ind.  
 407 John Frederick Coursen, Palatine, Ill.  
 408 Roger Charles Dycus, Norwalk, Conn.  
 409 Michael Stephen Fye, South Bend, Ind.  
 410 Edward William Hiltbeitel, Downingtown, Pennsylvania  
 411 Howard Shideler Huntington, Liberty, Ind.  
 412 Mark Alan Jerabek, Glenshaw, Pa.  
 413 Brian William Marks, Wamatah, Ind.  
 414 John Floyd Nienow, Hamilton, Ohio  
 415 William Rice Reed, State College, Pa.  
 416 Stephen Frederick Streib, Indianapolis, Ind.  
 417 Victor Wayne Thompson, Bristol, Ind.

### CHI CHAPTER

- 695 Clifford Eric Anderson, Tucson, Ariz.  
 696 Henry Rodman Anderson, Jr., Carr Canyon, Arizona  
 697 John Edward Arnold, Palo Alto, Calif.  
 698 Edward Standish Barry, Tucson, Ariz.  
 699 Franklin Lewis Broyles, Tucson, Ariz.  
 700 Robert Edward Darwin, Sierra Vista, Ariz.  
 701 Roy Flower Ellis, Tombstone, Ariz.  
 702 Ronald Adolph Franquero, Globe, Ariz.  
 703 Gary Russell Frere, Scottsdale, Ariz.  
 704 David Carl Healey, Tucson, Ariz.  
 705 Richard John Hegggen, Corvallis, Ore.  
 706 Ronald Dale Hilliard, Tucson, Ariz.  
 707 David Bruce May, Phoenix, Ariz.  
 708 James Curtis Seals, Tucson, Ariz.  
 709 Benjamin Stevens Smith, Tucson, Ariz.  
 710 Harold Raymond Smith, Concord, Calif.  
 711 Donald Michael Steinwachs, Tucson, Ariz.  
 712 Freedoon Tamjidi, Tucson, Ariz.  
 713 George Albert Walker, Jr., Tucson, Ariz.  
 714 Raymond Eugene Wiley, Tucson, Ariz.  
 715 Michael Robert Wuest, Rome, N. Y.  
 716 John Brownlee Trimble (Honorary), Tucson, Arizona

### OMEGA CHAPTER

- 645 Donald William Bechtold II, Hot Springs, South Dakota  
 646 Gary Kent Bien, Veblen, S. D.  
 647 Edward Thomas Clark, Kenneth, Minn.  
 648 Lynn Frank Cole, Kennebec, S. D.  
 649 Larry Stephen Doss, Sioux Falls, S. D.  
 650 Lavern Joseph Hart, Lead, S. D.  
 651 Curtis Wayne Knight, Gann Valley, S. D.  
 652 Richard Thomas Newberg, Custer, S. D.  
 653 Dennis Lee Olmstead, Edgemont, S. D.  
 654 David Eugene Rembold, Kettering, Ohio

- 655 Carl James Schwenn, Pierre, S. D.  
 656 Richard John Storm, Ethan, S. D.  
 657 David John Wagner, Alexandria, S. D.  
 658 Walter Leroy Williams, Faith, S. D.

### GAMMA BETA CHAPTER

- 484 Ali Mohammed Abu-Taha, Silver Spring, Maryland  
 485 Columba Patrick Cadwallader, Arlington, Virginia  
 486 Lee Allen Danisch, Bethesda, Md.  
 487 Guy Harold Goddard, Jr., Alexandria, Va.  
 488 Garner Lennon Lewis, Simsbury, Conn.  
 489 John Wise Lindsey, Rockville, Md.  
 490 Michel Constantin Saab, Beirut, Lebanon  
 491 Timothy Muth Stegmaier, Falls Church, Va.  
 492 Alan Paul Steiner, Arlington, Va.

### DELTA BETA CHAPTER

- 399 Donald Ray Albro, Fairdale, Ky.  
 400 Herbert Geddes Anderson, Fort Thomas, Kentucky  
 401 Charles Philip Black, Shelbyville, Ky.  
 402 John Campbell Blankenbeckler, Jr., Louisville, Kentucky  
 403 William Michael Cantrell, Crestwood, Ky.  
 404 John Robert Commons, Richmond, Ind.  
 405 William Isaac Dreibelis, Jr., Omaha, Nebr.  
 406 Robert Russel Gnerlich, Closter, N. J.  
 407 John David Hasch, Louisville, Ky.  
 408 Ronald Joseph Huber, Louisville, Ky.  
 409 Robert Preston James, Louisville, Ky.  
 410 Joseph Paul Pike, Jr., Louisville, Ky.  
 411 William Joseph Rhodes, Louisville, Ky.  
 412 James Henry Rollwage, Louisville, Ky.  
 413 Gene Scott Snider, Louisville, Ky.  
 414 Edward Robert Torstrick, Jr., Louisville, Kentucky  
 415 Jeffrey Lynn Anderson, Louisville, Ky.

### EPSILON BETA CHAPTER

- 190 George Andrew Przybys, Detroit, Mich.  
 191 Terry Lee Swick, Detroit, Mich.  
 192 Paul Dabish, Detroit, Mich.  
 193 David John Fawcett, Southfield, Mich.  
 194 Lawrence James Hunt, Detroit, Mich.  
 195 Lawrence James Klassen, Jr., Detroit, Mich.  
 196 Thomas Francis Pittel, Lathrup Village, Michigan  
 197 Ainars Eriks Pavlovics, Detroit, Mich.

### ETA BETA CHAPTER

- 111 Floyd Ernest Bartsch, Houston, Tex.  
 112 Michael Lynn Hentschel, Houston, Tex.  
 113 William Ben Lind, Bellaire, Tex.  
 114 Timothy Edward Swaty, Houston, Tex.  
 115 William Francis Trainor, Jr., Houston, Tex.

### THETA BETA CHAPTER

- 43 Robert Roy Franklin, Seattle, Wash.  
 44 Ralph William Kiger, Seattle, Wash.  
 45 Wayne Dixon McElroy, Seattle, Wash.  
 46 Peter John Moerbeek, Seattle, Wash.  
 47 Thomas Carl Torkelson, Seattle, Wash.

## THE GEAR OF THETA TAU

### IOTA BETA CHAPTER

- 79 Donald Kent Bailey, Schenectady, N. Y.
- 80 Darryl Warren Busser, Detroit, Mich.
- 81 Ronald Charles Capossela, Peekskill, N. Y.
- 82 Patrick Thomas Gleason, Allen Park, Mich.
- 83 Ronald Edward Klimek, Chicago, Ill.
- 84 Charles Thomas Muir, Detroit, Mich.
- 85 Roy Alexander Muir, Detroit, Mich.
- 86 Michael James O'Leary, Evanston, Ill.
- 87 Charles Joseph Raeder, Jr., Cleveland, Ohio
- 88 Lawrence Edward Wells, Detroit, Mich.
- 89 Joseph Michael Koczan, Cleveland, Ohio
- 90 Thomas Louis Kundert, Delphos, Ohio
- 91 Jon Bradford Leahesy, Oak Park, Ill.
- 92 Robert Stanley Morrow, Detroit, Mich.

- 93 Thomas James O'Donnell, Chicago, Ill.
- 94 Ronald Raymond Thomas, Detroit, Mich.

### KAPPA BETA CHAPTER

- 54 Wallace Owen Cook, Jr., Flora, Miss.
- 55 James Albert Cooper, Jr., Columbus, Miss.
- 56 Gregory Foster Gleib, Brookhaven, Miss.
- 57 Douglas Heath Lefevre, Vicksburg, Miss.
- 58 Billy Charles Magee, Mendenhall, Miss.
- 59 Reuben Simpson Pitts III, Ponotoc, Miss.
- 60 Frederick Arthur Shearin, Hickory Valley, Tennessee
- 61 Robert Glen Tischer, Starkville, Miss.
- 62 Franklin Muranyi Ingels (Honorary), State College, Mississippi
- 63 John Edd Pannell, Blue Springs, Miss.

## Letter to the Editor

*The Editor has received an interesting letter from Ernst E. Behr, California (Berkeley) '09, who was initiated as an alumnus member during the installation of Epsilon Chapter in 1911. The greater part of this letter is reproduced here.*

"I was very much interested in the spring edition of THE GEAR. . . . It is hard for me to realize that the Chapter [Epsilon] was down to only one member. When I was in college and for many years afterward, when I was in fairly close contact with the Chapter, Epsilon was an active organization. . . .

"I was a Teaching Fellow in the Geological Department. We were very fortunate to have Dr. Louderback of the faculty as a member. His hand guided the Chapter for many years. For about twenty years after graduation I used to attend Chapter meetings. . . .

"I deserted the field of geology many years ago, but kept up my reading, etc. I have been in the agricultural chemical business for the past 30 years and am still active in this field.

"Several years ago I was called on by our local Junior College to spell the local geology teacher, who was ill. I had ample credits to qualify for

a certificate. Unfortunately the man died and I have taken his place ever since. I enjoy the work and my pupils, many of whom have become personal friends. Often taking trips together. During the past nine years I have acquired a large collection of colored slides which are a great help in my teaching. When I took geology we had rather poor lantern slides.

"I certainly hope that my Chapter builds up. I live about 125 miles from Berkeley, otherwise I would like to do something that would be of help to the Chapter.

"Prof. Louderback was a great teacher and also a fine fellow. Berkeley had an ordinance that prohibited saloons within a mile of the University. Louderback had attended Heidelberg and often we would meet at Gus Brouse's one mile south, and over pitchers of beer in the basement, learned papers would be presented by the members.

"Gone are the good old days."

Sincerely in H & T,  
ERNST E. BEHR  
968 Helen Avenue  
Yuba City, California 95991

### IMPORTANT NOTICE TO ALUMNI

Beginning with the Fall 1963 issue of THE GEAR, we modified our policy for those alumni who move without notifying THE GEAR office of their new mailing addresses. If your GEAR is returned to us with a new address written on it, we will automatically place you on the mailing list for the next issue. If a returned GEAR has no forwarding address on it, we will seek your current address by first class letter. Because of the high postal rates, we will not remail the current issue to you as in the past. In all cases we will attempt to keep you on the mailing list.





# Theta Tau Directory

Theta Tau Fraternity was founded at the University of Minnesota, Minneapolis, Minnesota, on October 15, 1904, by:

ERICH J. SCHRADER  
ELWIN L. VINAL, 4039 West Mercer Way, Mercer Island, Washington 98040  
WILLIAM M. LEWIS, 33 Pilgrim Lane, Drexel Hill, Pennsylvania 19026  
ISAAC B. HANKS, 2120 Northwest Boulevard, Spokane, Washington 99205

## PAST GRAND REGENTS

ERICH J. SCHRADER, *Alpha*, (1904-1919)\*  
GEORGE D. LOUDERBACK, *Epsilon*, (1919-1925)\*  
J. SIDNEY MARINE, *Eta*, (1925-1927), 45 Popham Road, Scarsdale, New York 10583  
RICHARD J. RUSSELL (Dr.), *Epsilon*, (1927-1931), 4575 Highland Rd., Baton Rouge, La. 70808  
FRED COFFMAN, *Lambda*, (1931-1935)\*  
HERMAN H. HOPKINS, *Beta*, (1935-1937), 3320 Culver Avenue, Evanston, Illinois 60201  
JOHN M. DANIELS (Dr.), *Nu Honorary*, (1937-1939), 350 Pinewood Lane & Cole Road, Sarver, Pennsylvania 16055  
RUSSELL G. GLASS, *Sigma*, (1939-1946), Saddleback Lane, Gates Mills, Ohio 44040  
RALPH W. NUSSER, *Zeta*, (1946-1948), 609 West Dartmouth, Kansas City, Missouri 64113  
NORMAN B. AMES, *Gamma Beta*, (1948-1950)\*  
DONALD D. CURTIS, *Omicron Honorary*, (1950-1952)\*  
JAMISON VAWTER, *Zeta*, (1952-1954)\*  
A. DEXTER HINCKLEY, *Theta*, (1954-1958), 90 Morningside Drive, New York, N. Y. 10027  
CHARLES W. BRITZIUS, *Alpha*, (1958-1962), 2440 Franklin Avenue, St. Paul, Minnesota 55114  
\*Deceased

## EXECUTIVE COUNCIL

GRAND REGENT WILLIAM K. REY (Prof.) ..... P. O. Box 664, University, Alabama 35486  
GRAND VICE REGENT C. RAMOND HANES ..... 581 E. Dominion Blvd., Columbus, Ohio 43214  
GRAND SCRIBE ROBERT E. POPE ..... 13 Sona Lane, Saint Louis, Missouri 63141  
GRAND TREASURER CHARLES W. BRITZIUS ..... 2440 Franklin Ave., St. Paul, Minnesota 55114  
GRAND MARSHAL RICHARD LYNCH ..... West Lafayette Towers, Apt. 1804, Detroit, Michigan 48207  
GRAND INNER GUARD C. E. WALES (Dr.) ..... 409 W. Stadium, West Lafayette, Indiana 47906  
GRAND OUTER GUARD JAY N. THORPE ..... 5208 - 119th Ave., S.E., Bellevue, Washington 98004

## DELEGATE-AT-LARGE

PAST GRAND REGENT CHARLES W. BRITZIUS ..... 2440 Franklin Ave., St. Paul, Minnesota 55114

## CENTRAL OFFICE

ROBERT E. POPE, Executive Secretary ..... 13 Sona Lane, Saint Louis, Missouri 63141

## REGIONAL DIRECTORS

NORTHERN JAMES L. REYNOLDS, Mechanical Engineering Department, University of Minnesota, Minneapolis, Minnesota 55455 (*Alpha*, *Beta*, *Xi*, *Omicron*)  
SOUTHERN FRED E. ARMSTRONG, JR. .... The Trane Co., 2257 Highland Avenue, Birmingham, Alabama 35205 (*Zeta*, *Iota*, *Mu*, *Upsilon*, *Eta*, *Beta*, *Kappa*, *Beta*)  
CENTRAL GEORGE G. DODD (Dr.) ..... 29451 Cunningham Drive, Warren, Michigan 48092 (*Delta*, *Sigma*, *Phi*, *Delta*, *Beta*, *Epsilon*, *Beta*, *Iota*, *Beta*)  
EASTERN JOHN M. DEALY (Dr.), Department of Chemical Engineering, McGill University, Montreal 2, Quebec, Canada (*Theta*, *Pi*, *Rho*, *Tau*, *Gamma*, *Beta*)  
WESTERN GARN HATCH ..... 2011 Bryan Avenue, Salt Lake City, Utah 84108 (*Gamma*, *Epsilon*, *Lambda*, *Chi*, *Psi*, *Omega*, *Zeta*, *Beta*, *Theta*, *Beta*)

## SPECIAL APPOINTMENTS

ARCHIVIST MILTON S. WUNDERLICH ..... 545 Mount Curve Boulevard, St. Paul, Minnesota 55116  
SPECIAL REPRESENTATIVE FOR CALIFORNIA JACK E. PAYNE, 2245 Lanai Avenue, Apt. 60, San Jose, California 95122

# THE GEAR OF THETA TAU

## CHAPTERS AND CHAPTER ADVISERS

ALPHA	Founded October 15, 1904 _____ University of Minnesota 515 Tenth Avenue, S. E., Minneapolis, Minnesota 55414*
BETA	Adviser: HERMAN E. COLLWITZER, 2857 Dorman Avenue, Minneapolis, Minn. 55406 Established March 26, 1906 _____ Michigan Technological University U. S. Highway 41, Houghton, Michigan 49931*
GAMMA	Adviser: PROF. HERBERT W. HAWN, Mechanical Engineering Department, Michigan Technological University, Houghton, Michigan 49931 Established November 8, 1907 _____ Colorado School of Mines Box 134, Colorado School of Mines, Golden, Colorado 80401
DELTA	Adviser: DR. L. W. LEROY, Department of Geology, Colorado School of Mines, Golden, Colorado 80401 Established May 23, 1911 _____ Case Institute of Technology Theta Tau Box, Case Institute of Technology, Cleveland, Ohio 44106
EPSILON	Adviser: DR. ROBERT H. SCANLAN, Department of Engineering Mechanics, Case Institute of Technology, Cleveland, Ohio 44106 Established May 4, 1911 _____ University of California Theta Tau, Engineering Research Services Building, University of California, Berkeley, California 94720
ZETA	Adviser: DR. JAMES M. CARMAN, School of Business Administration, University of California, Berkeley, California 94704 Established April 17, 1912 _____ University of Kansas 1602 Louisiana Street, Lawrence, Kansas 66045*
THETA	Adviser: PROF. FREDERICK H. C. SMITHMEYER, 2130 Owens Lane, Lawrence, Kansas 66044 Established May 26, 1914 _____ Columbia University c/o Dean's Office, School of Engineering, Columbia University, New York, New York 10027
IOTA	Adviser: PROF. ROBERT J. COOPER, Director of Student Activities, School of Engineering, Columbia University, New York, New York 10027 Established February 5, 1916 _____ University of Missouri at Rolla Student Union, University of Missouri at Rolla, Rolla, Missouri 65401
LAMBDA	Adviser: PROF. FRANK J. CAPEK, Civil Engineering Department, University of Missouri at Rolla, Rolla, Missouri 65401 Established April 29, 1920 _____ University of Utah Merrill Engineering Building, University of Utah, Salt Lake City, Utah 84112
MU	Adviser: PROF. PRESTON D. LINFORD, Civil Engineering Department, University of Utah, Salt Lake City, Utah 84112 Established January 3, 1922 _____ University of Alabama 300 Thomas Street, Tuscaloosa, Alabama 35401*
XI	Adviser: PROF. WILLIAM K. REY, P. O. Box 664, University, Alabama 35486 Established January 13, 1923 _____ University of Wisconsin 1635 Monroe Street, Madison, Wisconsin 53711*
OMICRON	Adviser: DR. JOHN W. MITCHELL, Department of Mechanical Engineering, University of Wisconsin, Madison, Wisconsin 53706 Established February 3, 1923 _____ University of Iowa Theta Tau Box, Engineering Building, Iowa City, Iowa 52240
PI	Adviser: DR. DONALD H. MADSEN, Engineering Building, Iowa City, Iowa 52240 Established May 26, 1923 _____ University of Virginia Thornton Hall, University of Virginia, Charlottesville, Virginia 22903
RHO	Adviser: DR. GEORGE B. MATTHEWS, Department of Aerospace Engineering, University of Virginia, Charlottesville, Virginia 22903 Established February 16, 1924 _____ North Carolina State University at Raleigh P. O. Box 5282, State College Station, Raleigh, North Carolina 27607
SIGMA	Adviser: DR. FORREST W. LANCASTER, P. O. Box 5367, State College Station, Raleigh, North Carolina 27607 Established November 29, 1924 _____ Ohio State University 1946 Indianola Avenue, Columbus, Ohio 43201*
	Adviser: DR. ROBERT L. COSGRIFF, Department of Electrical Engineering, Ohio State University, Columbus, Ohio 43210

# FALL 1966

TAU	Established December 12, 1925 _____ Syracuse University College of Engineering, Bldg. #6, Syracuse University, Syracuse, N. Y. 13210 Adviser: PROF. CARSON P. BUCK, Associate Dean, College of Engineering, Syracuse University, Syracuse, New York 13210
UPSILON	Established April 7, 1928 _____ University of Arkansas 763 West Dickson Street, Fayetteville, Arkansas 72701* Adviser: PROF. JIM F. AKIN, Mechanical Engineering Department, University of Arkansas, Fayetteville, Arkansas 72701
PHI	Established April 21, 1928 _____ Purdue University 416 North Chauncey Avenue, West Lafayette, Indiana 47906* Adviser: PROF. JOSEPH C. OPPENLANDER, Department of Civil Engineering, Purdue University, West Lafayette, Indiana 47906
CHI	Established April 23, 1930 _____ University of Arizona 1614 East Speedway Boulevard, Tucson, Arizona 85719* Adviser: PROF. PHILIP B. NEWLIN, Civil Engineering Department, University of Arizona, Tucson, Arizona 85719
PSI	Established May 7, 1932 _____ Montana College of Mineral Science & Technology Theta Tau, Residence Hall, Montana College of Mineral Science & Technology, Butte, Montana 59701 Adviser: PROF. WILLIAM J. VAN MATRE, Department of Mining Engineering, Montana College of Mineral Science & Technology, Butte, Montana 59701
OMEGA	Established March 26, 1932 _____ South Dakota School of Mines and Technology 107 Kansas City Street, Rapid City, South Dakota 57701* Adviser: PROF. WILLIAM V. COYLE, Civil Engineering Department, South Dakota School of Mines, Rapid City, South Dakota 57701
GAMMA BETA	Established March 16, 1935 _____ The George Washington University Theta Tau, Davis-Hodgkins House, 731 - 22nd Street, N.W., Washington, D. C. 20006 Adviser:
DELTA BETA	Established May 20, 1939 _____ University of Louisville 2022 South First Street, Louisville, Kentucky 40208* Adviser: PROF. MILES G. NORTHROP, Electrical Engineering Department, University of Louisville, Louisville, Kentucky 40208
EPSILON BETA	Established May 19, 1951 _____ Wayne State University 1200 West Hancock, Detroit, Michigan 48201* Adviser: DR. HAROLD G. DONNELLY, Chemical and Metallurgical Engineering Department, Wayne State University, Detroit, Michigan 48201
ZETA BETA	Established May 7, 1960 _____ Utah State University Box 254, Union Building, Utah State University, Logan, Utah 84321 Adviser:
ETA BETA	Established May 13, 1961 _____ University of Houston Cullen College of Engineering, University of Houston, 3801 Cullen Boulevard, Houston, Texas 77004 Adviser: PROF. WILLIAM J. LEACH, Assistant Dean, Cullen College of Engineering, University of Houston, Houston, Texas 77004
THETA BETA	Established March 2, 1963 _____ University of Washington Box 171, Student Union Building, University of Washington, Seattle, Wash. 98105 Adviser: PROF. W. B. BONOW, 5810 - 16th N.E., Seattle, Washington 98105
IOTA BETA	Established February 15, 1964 _____ University of Detroit Theta Tau, University of Detroit, Detroit, Michigan 48221 Adviser:
KAPPA BETA	Established November 21, 1964 _____ Mississippi State University 200 Hillside Drive, Starkville, Mississippi 39759* Adviser: FRANKLIN M. INGELS, P. O. Box 2097, State College, Mississippi 39762

## COLONY

GMI	Certified September 25, 1965 _____ General Motors Institute Theta Tau Colony, General Motors Institute, 1700 West 3rd Avenue, Flint, Michigan 48502 Adviser: PROF. JAMES B. BAY, 3202 Briarwood Drive, Flint, Michigan 48507
-----	--

\* Chapter house

## THE GEAR OF THETA TAU

### INTERIM COMMITTEES, 1965-1966

**ALUMNI AFFAIRS**—C. R. HANES, *Chairman*, 581 East Dominion Boulevard, Columbus, Ohio 43214; JOHN HAKALA, 36318 Winterset, Mt. Clemens, Michigan 48043; LEON M. VICK, JR., 1437 Beaumont Drive, Montgomery, Alabama 36106

**CONSTITUTION REVISION**—DR. JOHN M. DEALY, *Chairman*, Department of Chemical Engineering, McGill University, Montreal 2, Quebec, Canada

**CONVENTION PLANNING**—ROBERT E. POPE, *Chairman*, 13 Sona Lane, Saint Louis, Missouri 63141; JAMES L. REYNOLDS, Mechanical Engineering Department, University of Minnesota, Minneapolis, Minnesota 55455

**CURRICULAR ELIGIBILITY**—DR. CHARLES E. WALES, *Chairman*, 409 West Stadium, West Lafayette, Indiana 47906

**EXTENSION**—ROBERT E. POPE, *Chairman*, 13 Sona Lane, Saint Louis, Missouri 63141; WILLIAM A. McCULLOCH, 1446 Laramie, Manhattan, Kansas

66502; JAMES E. SCHNARR, 2012 West Ash, H9 Town & Campus, Columbia, Missouri 65202

**FINANCE**—CHARLES W. BRITZJUS, *Chairman*, 2440 Franklin Avenue, Saint Paul, Minn. 55114; HERMAN H. HOPKINS, 3320 Culver Avenue, Evanston, Ill. 60201; RICHARD LYNCH, West Lafayette Towers, Apt. 1804, Detroit, Mich. 48207; PAUL L. MERCER, P.O. Box 487, Keokuk, Iowa 52632

**HISTORY**—DR. JOHN M. DEALY, *Chairman*, Department of Chemical Engineering, McGill University, Montreal 2, Quebec, Canada; DWIGHT D. ZECK, 4817 Sheboygan Avenue, Apt. 601, Madison, Wisconsin 53705; JOSEPH MOVIZZO, 324 East Johnson Street, Apt. 6, Madison, Wisconsin 53703

**RITUAL REVISION**—DR. GEORGE G. DODD, *Chairman*, 29451 Cunningham Drive, Warren, Michigan 48092

**SCHRADER AWARD**—DR. CHARLES E. WALES, *Chairman*, 409 West Stadium, West Lafayette, Indiana 47906; JAMES T. DIXON III, Apt. 2L, 2209 Pizitz Drive, Huntsville, Alabama 35805

### PRESIDENTS AND SECRETARIES OF ALUMNI ASSOCIATIONS

ARKANSAS (Club) JOSEPH W. GILLESPIE, *President*, P. O. Box 231, El Dorado, Arkansas 71731

CARL GIBBONS, *Secretary*, 763 West Dickson, Fayetteville, Arkansas 72701

CENTRAL JAMES ANDERSON, *President*, 54 East Royal Forest Blvd., Columbus, Ohio 43214

CENTRAL FLORIDA (Club) GORDON DAVIDSON, *President*, 1324 Buena Vista Avenue, Orlando, Florida 32808

JOSEPH C. SPENCER, JR., *Secretary*, 1204 Quintilian Avenue, Orlando, Florida 32809

CHICAGO ALF T. SWANSON, *President*, 479 Winchester Road, Chicago Heights, Ill. 60411

CLEVELAND JAMES R. MCKINNEY, *President*, 3853 Kirkwood Road, Cleveland, Ohio 44121

CALVIN DALTON, *Secretary*, The Arcade, Cleveland, Ohio 44114

DETROIT RUSSELL HOLMES, *President*, 27236 Huntington Drive, Warren, Michigan 48093

EDMOND VAN ELSLANDER, *Secretary*, 3423 Pall Drive, Warren, Michigan 48092

INTERMOUNTAIN ALTON H. SORESENSEN, JR., *President*, 3478 South 3125 East, Salt Lake City, Utah 84109

C. COURTNEY CAMPBELL, *Secretary*, 1655 Blaine Avenue, Salt Lake City, Utah 84105

KANSAS CITY THOMAS W. DOMVILLE, *President*, 5032 North Oak Street, Apt. 334, Kansas City, Missouri 64118

RONALD W. BONJOUR, *Secretary*, 5507 W. 78th Terrace, Prairie Village, Kansas

METROPOLITAN NEW YORK DON MACLAREN, *President*, 994 Oakland Avenue, Plainfield, New Jersey 07060

JOSEPH R. MCCORMICK, *Treasurer*, 243 West Hazelwood Avenue, Rahway, N. J. 07065

NATIONAL CAPITAL PAUL KUZIO, *President*, 3601 Van Ness Street, N.W., Washington, D.C. 20008

HERBERT S. WILKINSON, *Secretary*, 4743 Bradley Boulevard, Bethesda, Maryland

NORTH ALABAMA (Club) PHILIP J. PINCHA, *President*, 5605 Noble Circle, Huntsville, Alabama 35802

CHARLES H. HASKEW, *Secretary*, 10011 Willow Park Drive, Huntsville, Alabama 35803

PACIFIC NORTHWEST J. DELVIN ARMSTRONG, *President*, 16504 N.E. 13th, Bellevue, Washington 98004

RONALD C. ZENTER, *Secretary*, 6247 Palatine Avenue North, Seattle, Washington 98105

SOUTHWESTERN PETER M. MOSIER, JR., *President*, 5542 East Burns Street, Tucson, Arizona 85711

ALBERT E. HAMILTON, *Secretary*, 4808 East Bellevue Avenue, Tucson, Arizona 85719

TWIN CITY JAMES W. FARCY, *President*, 826 West Iowa, St. Paul, Minnesota 55106

GARY LAMONT, *Secretary*, 1005 - 50th N.E., Minneapolis, Minnesota 55421

WISCONSIN (Club) EDWARD P. WILKOMMEN, *President*, 2539 North 72 Street, Wauwatosa, Wisconsin 53213

JOSEPH F. MOVIZZO, *Secretary*, 324 East Johnson Street, Apt. 6, Madison, Wisconsin 53703

## ALUMNI NEWS

THE GEAR needs news about you and other alumni. Include promotions, job changes, professional honors, family news. Send to THE GEAR OF THETA TAU, 7421 Village Drive, Prairie Village, Kansas 66208.

Name ..... Chapter ..... Class  
Year .....

Address .....

News of yourself and/or others .....

## NOTICE OF DECEASED MEMBER

Please give as complete information as possible, including biographical data known, clippings, etc. Send to THE GEAR OF THETA TAU, 7421 Village Drive, Prairie Village, Kansas 66208.

Name ..... Chapter ..... Class  
Year .....

Address .....

Date and place of death .....

Name and address of nearest relative .....

Reported by ..... Chapter .....

Address .....

Relationship to deceased .....

## RECOMMENDED STUDENTS

Mail to Robert E. Pope, Executive Secretary, 13 Sona Lane, St. Louis, Missouri 63141. Include relatives and other recommended students at accredited schools whether or not Theta Tau yet has a chapter at that school.

I recommend that the following student(s) in engineering be considered for Theta Tau membership:

Name ..... School .....

Mailing Address ..... Major .....

..... Expected Graduation Date .....

Remarks:

Signed ..... Chapter ..... Year .....



## CHANGE OF ADDRESS NOTICE

Send to THE GEAR OF THETA TAU, 7421 Village Drive, Prairie Village, Kansas 66208.

Name \_\_\_\_\_ Chapter \_\_\_\_\_ Class \_\_\_\_\_  
Year \_\_\_\_\_

### Old address:

Street \_\_\_\_\_

City \_\_\_\_\_ State \_\_\_\_\_ ZIP Code \_\_\_\_\_

### New address:

Street \_\_\_\_\_

City \_\_\_\_\_ State \_\_\_\_\_ ZIP Code \_\_\_\_\_

Permanent address from which mail will always be forwarded to you:

Street \_\_\_\_\_

City \_\_\_\_\_ State \_\_\_\_\_ ZIP Code \_\_\_\_\_

## NOTICE OF ALUMNUS ADDRESS

Send names and addresses of any alumni you know who *may* not be receiving THE GEAR to THE GEAR OF THETA TAU, 7421 Village Drive, Prairie Village, Kansas 66208.

Name \_\_\_\_\_ Chapter \_\_\_\_\_ Class \_\_\_\_\_  
Year \_\_\_\_\_

Street \_\_\_\_\_

City \_\_\_\_\_ State \_\_\_\_\_ ZIP Code \_\_\_\_\_

Reported by \_\_\_\_\_ Chapter \_\_\_\_\_ Class \_\_\_\_\_  
Year \_\_\_\_\_

Street \_\_\_\_\_

City \_\_\_\_\_ State \_\_\_\_\_ ZIP Code \_\_\_\_\_

Be sure the Theta Taus you know are receiving THE GEAR.

## GIFTS TO THETA TAU

Make checks payable to Theta Tau Fraternity and mail to Robert E. Pope, Executive Secretary, 13 Sona Lane, St. Louis, Missouri 63141.

I enclose the following contribution to Theta Tau:

As an unrestricted gift \$ \_\_\_\_\_

For the Founders' Memorial Fund \$ \_\_\_\_\_

Name \_\_\_\_\_ Chapter \_\_\_\_\_ Class \_\_\_\_\_  
Year \_\_\_\_\_

Street \_\_\_\_\_

City \_\_\_\_\_ State \_\_\_\_\_ ZIP Code \_\_\_\_\_

## The Road We Travel

It was just 12 years ago that I attended my first Theta Tau Convention, newly initiated and eager to experience THE national event of our Fraternity. It was the Fiftieth Anniversary and I recall it as a gala affair. The Grand Old Men of Theta Tau were there—Vinal, Lewis, Louderback, Russell, Hopkins, Daniels, Glass, Nusser, Ames, Curtis, Vawter, Hinckley, Howe, and Mercer. Only E. J. Schrader and Hanks were missing. It was an active and busy Convention and big changes which took place later were in the making at that time. This was the Fifties.

The Fifties were combative and turbulent years. Fraternities everywhere were under pressure to change their membership requirements. Theta Tau was no exception. The Convention floor resounded with arguments pro and con. Feelings on both sides ran high. For years the *avante garde* chapters assaulted the "status quo." They tried and failed in 1952. In 1954. In 1956. Then, in 1958 the issue was settled. In fact, the change seemed an almost foregone conclusion and the big emphasis in 1958 was on hammering out a new standard for membership requirements. This was done.

Since that time the attention of the Fraternity has turned to other things—establishing a Central Office, expansion to other schools, and better alumni relations. There is a new, young Executive Council. The students who have attended the Conventions in the Sixties seem to be a new breed. They are a bit more intense in purpose and attitude. They seem to be more conscious of the idealistic basis on which Theta Tau

was founded. At the same time they seem just a bit uncertain about how to move the Fraternity ahead, given to following closely the counsel of older heads before proposing bold new programs for Theta Tau.

They are prone to be somewhat impatient with "time wasting" routine, e.g., the Delegates (over Executive Council opposition) voted not to present oral reports about their own chapters to the Convention. They want to have more service from the Central Office in areas where they have done their own work in the past, e.g., keeping track of alumni. On the other hand they seem more eager to serve and to carry out their duties. (Now, a few Corresponding Secretaries sometimes write to me if I miss a chapter letter deadline.) New alumni have formed alumni clubs, four of them in the last two years compared with one in the Fifties. The chapters are acquiring new houses or improved housing—in the last two years Xi, Chi, and Kappa Beta.

Theta Tau is on the move in the Sixties. Perhaps we now need to pause and focus more clearly on where we would like to be in the Seventies. Forward momentum was badly needed in the Fifties. Now that we have it, our efforts should be focused on long range plans and guidance to keep the movement in control. Otherwise we could easily become a victim of the famous Parkinson's Laws and lose our intensity of purpose in a morass of bureaucratic routine. It is time to read John W. Gardner's excellent book, *The Renewal of Organizations*, and to develop an action plan that will carry us forward.—WEF



**NATIONAL ENGINEERS'  
WEEK FEB. 19-25, 1967**

### NATIONAL ENGINEERS' WEEK

All Theta Tau alumni and chapters are urged to take part in National Engineers' Week, February 19-25, 1967. This annual event is sponsored by the National Society of Professional Engineers.

THE GEAR OF THETA TAU  
7421 Village Drive  
Prairie Village, Kansas 66208

Return Requested

Non-Profit  
Bulk Rate  
U. S. POSTAGE  
PAID  
Lawrence, Kansas  
Permit No. 116

# JEWELRY AVAILABLE THROUGH CENTRAL OFFICE



## OFFICIAL JEWELRY:

Badge with close set pearls (Row three, right)	\$ 9.50
Badge with crown set pearls	13.00
Sister pin with close set pearls (Row three, left)	12.25
Sister pin with crown set pearls	13.75
Pledge button (Row two, left)	0.75
Pledge pin	1.00
Official recognition button (Top row, left)	1.00

## OTHER JEWELRY:

Greek letter recognition button (Top row, center)	1.25
Coat of arms recognition button (Top row, right)	1.25
Alumni charm (Bottom row, left)	3.50
Award key, gold plated (Bottom row, right)	5.50
Award key, 10K gold	7.25
Colony pin (Row two, right)	1.25
Founders' size coat of arms (Plain or with ring at top)	
Bronze or nickel	1.75
Sterling silver or gold plated	2.00
1/20-10k yellow gold filled	3.75
10k yellow gold	18.00

Prices do not include state and local sales and use taxes.

Official jewelry may be ordered only through the Theta Tau Central Office, 13 Sona Lane, St. Louis, Missouri 63141.