

*Geo. D. Louderback*

# THE GEAR OF THETA TAU

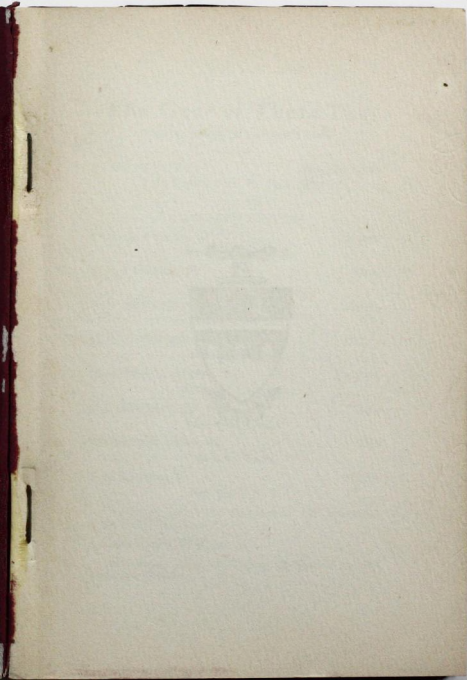
Official Organ of the Fraternity



Directory Number

June 1915







# The Gear of Theta Tau

OFFICIAL ORGAN OF THE FRATERNITY

---

HENRY MATCHETT . . . . . *Managing Editor*  
1416 Capital Ave., St. Paul, Minn.

---

## ASSOCIATE EDITORS

FRED A. CUTLER, '17 . . . . . ALPHA  
Minneapolis, Minn.

A. E. CARLSON, '15 . . . . . BETA  
Houghton, Mich.

H. S. MCKNIGHT, '15 . . . . . GAMMA  
Golden, Colorado

E. ROSS HOUSHOLDER, '17 . . . . . DELTA  
Cleveland, Ohio

CLARENCE L. MOODY, '16 . . . . . EPSILON  
Berkeley, California

C. VANDERLIP, '16 . . . . . ZETA  
Lawrence, Kansas

TREMERTON DEAN, '16 . . . . . ETA  
Boston, Mass.

J. B. KENWIN, '16 . . . . . THETA  
New York, N. Y.

Published under the direction of the Executive  
Council of Theta Tau.

Subscription, \$1.00 per year.

Advertising rates sent upon application to the  
Managing Editor.

## Grand Officers of Theta Tau

---

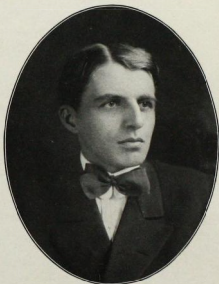
*Grand Regent*—Erich J. Schrader, '05                      ALPHA  
Rockland via Yerington, Nevada

*Grand Vice Regent*—Prof. G. D. Louderback      EPSILON  
Chief Geologist, Standard Oil Co., Shanghai, China

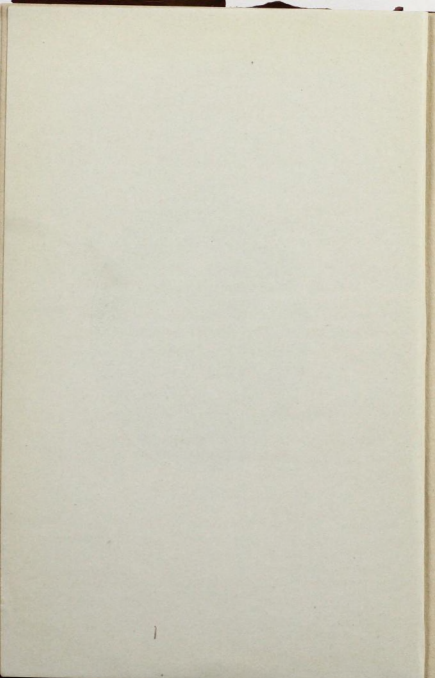
*Grand Scribe*—H. H. Hopkins, Jr., '08                      BETA  
164 No. Dearborn St., Chicago, Ill.

*Grand Treasurer*—B. B. Walling, '09                      ALPHA  
624 Plymouth Bldg., Minneapolis, Minn.

*Fifth Member Ex-Council*—R. I. Parker, '12                      ZETA  
10 Washington Ave., Schenectady, N. Y.



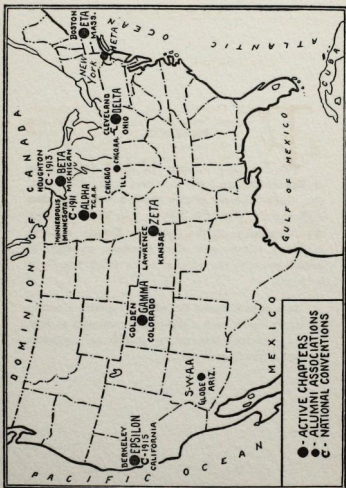
E. J. SCHRADER  
Grand Regent



## PREFACE.

This Directory number, the eighth annual issue of THE GEAR, we hope will meet with satisfaction. THE GEAR has been so ably handled in the past that we hesitate to place this copy in your hands but with the co-operation of the Associate Editors, and the individual officers and other members, we trust to furnish you with the information for which THE GEAR is noted.

It is impossible for the editor to furnish a correct Directory unless each member communicates at least once a year with him, noting changes and omissions in data, regarding himself.



---

"CALIFORNIA IN SEPTEMBER."

---



THE Convention at Berkeley, California, opens September 7th, 1915, and we urge every one to try to live up to the slogan of the last Convention 'Frisco in '15.

Full information in regard to the Program for the Convention will be found in Epsilon Chapter letter.

If you have not already done so, start your plans now to attend the Convention. You cannot afford to miss the Theta Tau doings, you will want to see the Fair, so plan to stay at least a week or two.



## ALPHA CHAPTER

Established Oct. 15, 1904

University of Minnesota  
Minneapolis, Minn.

By FRED A. CUTLER, '17, Associate Editor.

Dear Brothers:—

Since Alpha's last letter to the sister chapters several things of importance have happened.

Late in April, the Twin City Alumni Association held the annual banquet at the University Club of Minneapolis. The entire active chapter and a large number of the alumni were present. The banquet was followed by an exceptionally good list of speakers.

In June we lost by graduation a large number of our most active brothers, namely, Kopper, Goetzenberger, Dorr, Wentz, Hewitt, Mahoney, Chapman, Rockwell, Kruse, Curtis, Eidimiller, Wasson, and Quinlan.

School opened in September with eighteen old men back. At the start of the year we had a large number of names on our rushing list and after two or three parties, we pledged nine men.

In November nine new brothers were initiated. The new men were Ralph Johnston, T. K. Leonard, R. A. Jones, Carl Wallace, O. M. Rufsvold, Richard Dennis, Donald McGilvra, M. Ritchie and Robert Stickney.

On the evening of October 15, 1914, we held a Founder's Day Banquet at the Andrews Hotel. A big crowd of alumni and the active chapter to a man were there. Our four Post-Seniors, Loeffler, Dunham, Colvin and Rockwood, who are noted wits, entertained during the course of the feed. All but one of the active representation adjourned to the Palace Theatre after the banquet and enjoyed seats in the front row.

We gave a dance on the evening of February 2nd, Dr. Holman, an honorary member, with his new wife, Professor Zelner, another honorary member and his better half were the chaperones.

At our meetings this year we have papers on some engineering subjects, written by the active members. We find this is a very good thing and some splendid papers have come in.

We have several Tau Beta Pis in the chapter now. Brothers Dorr, Loeffler and Collar were elected last spring and brother Dunham was elected in the fall. Alpha Chapter is well represented in college activities. Brother Hult is Editor of the Minne-Ha-Ha and is on the Daily Board. Brother Phil Johnson is President of All-University Council and is a member of Grey Friars, an honorary senior society. Brothers Haynes and Rockwood are also Grey Friars. Brother Capser is a member of White Dragon. Brother Cutler is a Mitre. Brothers Capser, Haynes, Cutler and Rockwood are members of the Garrick Club, a men's dramatic club.

We are working right along on plans for the new house. Some of the alumni and several actives are members of the Building Association and are in direct charge of the work. We know that we are handicapped by not having a house of our own but this will be remedied if plans materialize.

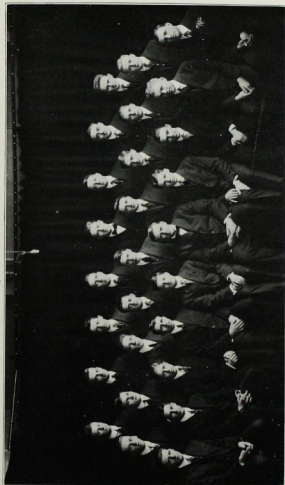
We wish our sister chapters a very prosperous year and trust that we will be able to see a good many of you all at the convention in California, this fall.

Yours in Theta Tau,

FRED A. CUTLER, Jr.

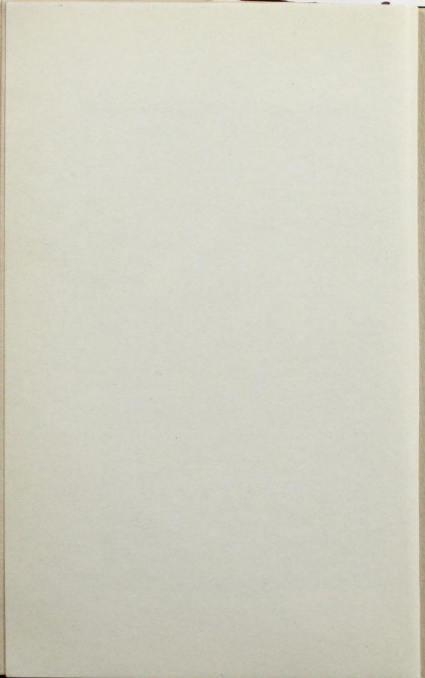
For the Chapter.

Apartments, 319 14th. Ave. S. E. Minneapolis,  
Minn.



## ALPHA CHAPTER

Jones	Hult	Wallace	Johnston	Helmick	Cutler	Casper	Ritchie
Rafsvold	Stone	Stickney	Sullivan	McGilvra	Lutz	Houghtaling	Dennis
Giltinan	Loeffler	Dunham	Collier	Zelner (Hon.)	Johnson	Urguhart	Cleveland



## ALPHA ALUMNI PERSONALS.

George Shepard, '09, married Esther Rutherford, June 17, 1914, at Kenyon, Minn.

Jack Sneve, '11, married Willimina Stevens, February 8, 1915, at Minneapolis.

G. A. Kristy, '09, reports he is no longer single, but fails to give us the name of his bride.

Milo P. Fox, Ex. '10, expects to marry Miss Helen Heyl, Colonel Heyl's daughter, in the fall. She is spoken of as the prettiest girl in the army circles at Washington.

H. V. Kruse, '13, is Assistant in the Experimental Laboratory, University of Minnesota.

George A. DuToit, Jr. '10, married Florence A. Hill, June 4, 1915, at Minneapolis.

Fred Sheffield, '09, Secretary-Treasurer Fargo Bridge and Iron Co., married June 1914 to Miss Shotwell at Fargo.

E. L. Vinal, '07, Consulting Engineer for the Wilkeson Light, Fuel and Power Co., is the proud father of two children.

## BETA CHAPTER

Established March 26, 1906

Michigan College of Mines  
Houghton, Michigan

A. E. CARLSON, '15, Associate Editor



T has always been customary to start the annual letter to the Gear in a "Here's looking at you" spirit, and we can see no reason for departing from said custom this year. So, to all in Theta Tau, Beta extends its fraternal hand.

The coming year promises to be no less successful than has been the past, and even the most jealous member of Theta Tau could wish no more than that. Tho handicapped by the smallest entering class in the history of the College, we are quite contented with the new men we selected. One honorary member, five initiates and two pledgemen, added to the twenty men who returned, give us a roll worthy of Beta.

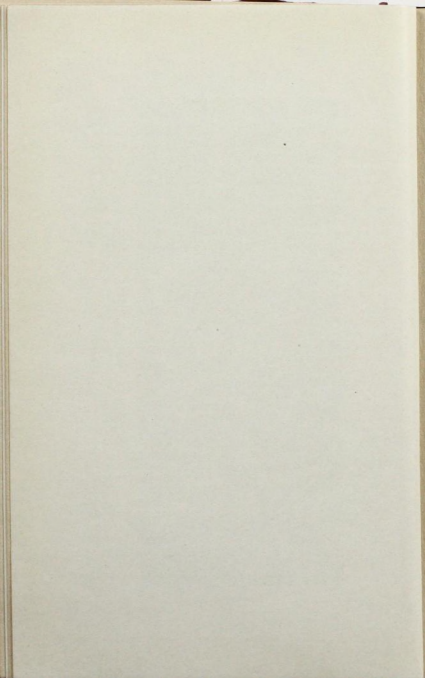
By far the most noteworthy event of the past year was the initiation, as an honorary member, of Professor Albert J. Houle, head of the Department of Metallurgy and Ore Dressing. The most popular and probably the most efficient instructor in school, an engineer of much practical experience, we count ourselves indeed fortunate to have been able to select him for the position left open by the death of brother Koenig. The formal initiation, which took place on Jan. 23, and which was attended by several of the older men, including brothers Potter and Ballard, was followed by a decidedly informal grub-fest and talk, during which harmony of various kinds, both local and imported, filled the air.

However, a history really ought to take up events in order, so we'll start away back in the Pre-Cambrian of last year and work up.



BETA CHAPTER, 1914-15

Nicolson	Poss	Lorain	Allen	Carlson	Prof. Hoole	David	Suverkrop	Clarke	Heine	Shields
Foard	Drake	King	Aldrich	Brown	Steinbach	Apell	Fraser	Cramer	Hicks	
Mills			Bradt	Zimmerman	Schemmel	Dobson			Griffen	



The R-3 trip was taken by ten of the brothers; Allen, Carlson, Drake, Hicks, Shields, Heine, Wiggins, Wilkinson, Apell and Coughlin and was, according to the dope, "some trip." What tho merry little crustaceans of Palatka did disturb our slumbers, what tho the cold rain of the Baltic did percolate down our defenseless necks and Cap did smear his iron hand over our beautiful sketches, what tho we did lose an average of a lamp a day down the shaft, there were things enough happening in the evening to make up for all that. Yes, it was some trip.

All the surveying was done at the Baltic, in Palatka, which, while not exactly as wet as Lake Superior, ran about eighty percent in moisture, we estimate. After two weeks in that riotous town, we made the regular trip thru the Iron Country, stopping at Iron Mountain, Iron River, Ironwood, etc., and arrived home with just enough money left to buy chem checks for "varnish burned off."

Some of the boys, however, were already familiar with the highways and byways, more especially the latter, of Iron Mountain and Crystal Falls, having been on the show trip the week before the R-3 trip began. Nearly every man in the house was with the show in some capacity, whether ticket taker, chorus lady, author or general roustabout. The "Plaid Mackinaw"—sixty, count 'em, sixty—made the rounds of Hancock Ishpeming, Iron Mountain, Crystal Falls, Marquette and Calumet, and if there was anything they left undone it was only because they didn't happen to think of it. The show was, they say, quite equal to either of the other two, and every one who saw it, from the Normal Girls in the "Stope" at Marquette to Al. Houle in the pit at Calumet, enjoyed it audibly.

But, we are sorry to say, there wont be one this year. Tho there was every prospect of putting on a good one, the Faculty was of the opinion that the work

involved interfered too much with school work, and, from the marks turned in last year, they seem to have been right. However, we're hoping for another chance next year.

The summer courses were much the same as usual, save that "Christy" wasn't here for patterns and that Al Houle's railroad was even hillier than usual. The squad that started near the brewery, tho, again claim that surveying is a fine course.

The peridotites, the quartzites and the Eagle Cafe were inspected by the Y-7 men. We understand that their report was favorable.

And then four short weeks and we started in on day and night shift again. Eighteen men returned, Brothers Allen, Apell, Bradt, Cramer, Clarke, Carlson, Dobson, Drake, Shields, Brown, Hicks, Zimmerman, Heine, Fraser, David, King, Mills, Schemmel and Nicolson. The entering class was very small, but the rush committee, headed by that well known lead pipe artist, Brother King, got busy and plucked the following brands from the burning: H. S. Aldrich of Detroit, Geo. E. S. Bayless, one time of Hobart College but late of Juneau; S. H. Loraine of Phillipsburg, Pa., Roy Griffin of Flint and J. R. Poss of Detroit, all good men and true.

The interclass activities promised to be rather mild, due to lack of material among the Freshmen, but by adding to them all the men in the Senior class who weighed over two hundred, the football game developed into a real scrap. The Marquis of Queensbury would have been proud of that game. However, the Sophs, by combining basketball with their football, won out by a 14 to 0 score, and by combining football with their basketball, took that game also. Brothers Cramer, Clarke, King, and Nicolson were numbered among the assassins in football, of whom Clarke, Cramer and Nicolson entertained also at basketball.

Several changes were noted in the teaching staff, J. H. Bell of Dartmouth took Bill Sparks place as Physical Director, S. R. Brinkley of the University of Georgia succeeded Dr. Koch, Professor A. J. Houle became Professor of Metallurgy, in place of the late lamented "Pink Duke," Mr. Chapman was made Assistant Professor in the same department, and Geo. Schubert, the old time favorite of the Q-2 class was appointed as Assistant Professor of Civil and Mining.

The Fall initiation took place on Nov. 14, at the Douglass and was marked by a flow of wit and wine, the one following the other. The grub was fine, the speeches were good, in short it was a real banquet.

About this time the boys got settled down to work and nothing much happened, except an occassional party at one of those select clubs, The Gilt Edge or The Board of Trade.

About Thanksgiving time several of the brothers gathered together sundry shotguns, bowie knives, etc. and went out to chase the merry deer. Brother Drake actually did bring back some venison, which we ate without asking any questions. We still have suspicions tho, that there was something not exactly legal about that deer.

Brother Apell was one of the two men elected to Tau Beta Pi during the Fall Term. According to the dope, he deserved it.

About ten of the boys stayed in Houghton over Christmas and divided their time between eating and Poker. It is rumored that as much as a dime changed hands some nights. Professor and Mrs. Houle invited the boys over to New Years dinner, which invitation was immediately accepted. The boys dug up their white collars and their best manners and, according to the dope, "Done themselves proud."

After Christmas two of the older men returned,

M. W. Foard, late of the Magpie Mine, Ontario, and Bones Steinbach. No radical changes were noticed in the winter term, save that the marks for the first month put quite a kink in the scholarship curve. Cap. Sperr's department, with Q-2, Q-5, Q-7, R-2, R-4 and R-5 was responsible for most of the sad marks. We are pleased to state, however, that the boys rallied nobly and horned the "Old Boy" regularly for the next two months.

Brother L. A. Suverkrop of New York was initiated Jan. 16.

The basketball team got under way after Christmas but, due to lack of opponents, had a rather short and uneventful season. Atlantic, Calumet, Calumet Y. M. C. A., Hancock and Marquette were the only teams played, the college winning every game. Brothers Clarke, Mills, Cramer and Nicolson played throughout and were awarded "M's."

Eight of the boys from the house will make the R-3 trip this year, Foard, Cramer, Bradt, Schemmel, King, Clarke, Brown, and Nicolson. Needless to say they plan to begin where last year's crew left off.

## ALUMNI NOTES.

R. R. Wiggins is now located in Nicaragua. He left for that country immediately after graduation last August, and is chief engineer for the Compania Mineral La Luz, Los Angeles in Prinzapulka, Nicaragua, Central America.

M. W. Foard who left school in 1909-10, and worked for brother Hasselbring at the Magpie Mine, Ontario, is with us again and expects to stay until he gets his degree.

J. R. Wilkinson is now instructing manual training in the high school in Neguinee, Mich. Joe expects to enter the mining world activities as soon as things pick up, and recover from the present slack conditions.

J. I. Ballard, '10, of the Quincy Mining Co. recently made a trip to Arizona to report on some tungsten properties, and on his return presented the school with some fine specimens.

Fred Gibbs is still at Cascade Mine, Palmer, in capacity of engineer.

W. B. Andrews paid us a visit the second of March, had dinner with us at the house. He is vice-president and general manager of the Oro-Belle Mining Co., Hart, Cal.

Russel Wortley is open pit engineer of the Wakefield Mining Co., Wakefield, Mich.

Joe Rowell is city engineer at the same town.

We received from Jas. A. Barr, '07, a short, too short and interesting letter a few days ago. He is engineer with the Int. Agr. Corporation Mt. Pleasant, Tenn. Miners of phosphate.

Gardner Edwards, '12, is now employed by the Calumet and Hecla Mining Co., and is at present driving a 400 ft. tunnel between the Tamarack and one of the C. & H. shafts.

"Pug" Schrieber, '14, is now working with brother Gilchrist in Norris, Ill., in the coal mines of the Alden Coal Co.

"Happy Mills" is now engineer for the Loretto Iron Mining Co. in Loretto, Mich. He recently designed a head frame which was later constructed over the old one, so that very little time was expended in changing from the old to the new head frame.

R. A. Loveland is now working in brother Potter's efficiency department of the C. & H., gathering dope on drills.

Chas. Rashleigh is still with the International Smelting & Refining Co. at Tooele, Utah.

The following brothers have been married since our last letter. K. K. Hood to Miss Amy Helen Carroll, of Hancock, Mich. Jan. 14, '14. E. P. Luce to Miss M. A. Hill, July 6, in St. Louis, Mo. P. E. Hinckley, to Miss Estelle Marie Hutchins, in Minneapolis, Minn., Oct. 10. F. S. Parkhurst, '04, to Mrs. Eloise Murless Johnson, in Niagara Falls, N. Y., Feb. 11, '15.

Theta Tau House,      A. E. CARLSON,  
233 College Ave.      Chairman Letter Committee.  
March 9th, '15.

## In Memoriam

---

### HARRY MILTON TURNER.

Harry Milton Turner was a son of David H. Turner, Crookston. He received his primary education at Crookston, then attended the Minnesota University from 1906 to 1908. He finished his education at the Michigan School of Mines at Houghton and was graduated there in 1911, receiving the degrees of B. S. and E. M.

He was employed by the International Smelting Company as foreman of the blast furnaces at Tooele, Utah. April 5th. he was crushed to death in the mine when he stepped to one side of a track to allow a car filled with ore to pass him. There was not room in the curve and he was crushed against the wall.

He was a member of Kappa Sigma Fraternity and in 1911 was Editor-in-chief of The Gear.

In writing of Brother Turner's death, Brother Erick J. Schrader says "His loss will be felt by all who came to know him. His ideals were high, and I feel that the profession needs more such young men." We as a fraternity unite with him in this feeling and realize that such a loss cannot but be felt by all.

## **In Memoriam**

---

### **CLARENCE EDGAR COPELAND.**

Clarence Edgar Copeland, a member of Gamma Chapter was engaged by the Britannia Mining & Smelting Co. of Britannia Beach, B. C., Canada. On March 22nd. a terrible slide of snow, mud and rock swept away practically all the buildings of the Britannia Mine.

The slide occurred just as the miners were in the act of changing shifts, and fifty-six lives were lost and twenty-two persons injured. Among the number killed were Clarence E. Copeland and his bride of January 6th. He was only 25 years old and had begun a most promising career.

He was a member of Beta Theta Pi Fraternity, and while at Colorado School of Mines was elected a member of Tau Beta Pi. The Fraternity mourn the loss of a brother, able and efficient whose short career was one of credit to himself and us.

## GAMMA CHAPTER.

Established Nov. 8, 1907.

Colorado School of Mines  
Golden, Colo.

By H. S. McKNIGHT, '15. Associate Editor.



GAMMA CHAPTER welcomes with great pleasure this opportunity of again extending her greetings and best wishes to all her Theta Tau brothers. The opening of the school year of 1914-15 found seven men present from last years chapter and also brother McGuire who was with us the previous year. In addition to these we were fortunate in being able to welcome brother Chas. R. Vorck, Alpha.

Shortly after school started the election of new men took place and at the regular Fall initiation the following men were initiated: Follansbee, Beall, Gauthier, Harrod, Duggleby, Bicknell and Wood. All of our men passed the mid-term examinations and, with the exception of brother Wood, all are continuing with their work. Due to unfortunate circumstances brother Wood found it necessary to leave us this semester but he will be with us again next fall.

On the night of Jan. 22nd. we held a banquet at the Albany hotel in Denver which was greatly enjoyed by all present. The entire active chapter and also several alumni were on hand and all, especially the latter, entertained with some good speeches and "bum jokes." The banquet was a highly successful one and we hope to have another before school is out.

Our Tau Beta Pi men are Duggleby and McKnight, and our "M" men are Davis, Dodge, Burns, Shanley, McKnight, Burris, McGuire, Beall, Gauthier, Duggleby, Essig and Follansbee. Brothers McKnight and Gauthier captained the football and basketball

teams respectively and brothers Essig and Follansbee managed the same. At the close of the basketball season brother Burns was elected captain of next year's team. Also brother Bicknell is to manage next year's football team.

Early in the year the question of getting a chapter house of our own was again brought up and although a great deal of work has been done in that direction we have not as yet been successful. The principal trouble has been in finding a suitable location near the school, and we hope to be able to do this by the beginning of the next term.

In closing we wish for all unlimited success and prosperity for the coming year.

GAMMA.

H. S. McKnight, S. A. E. House, Golden Col.

---

#### GAMMA ALUMNI PERSONALS.

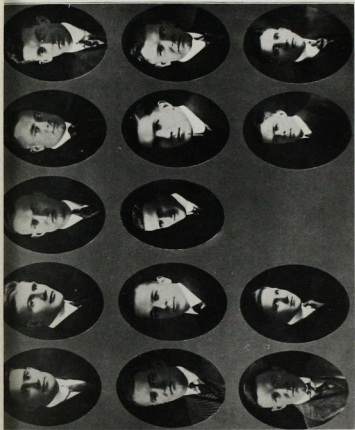
Clarence Copeland, married January 6th, 1915, to Miss Katherine Holland of Seattle, Washington.

Burwell Kilbourn, married June, 24th, 1914, to Miss Helen M. Carney, of Boulder, Colorado.

Donald Dyrenforth, married to Ruth Virginia Wheeler, December 9, 1914, at Evanston, Ill.

Henry Skavlen, married February 6th, 1915, to Emma Richardson, of Janesville, Wisconsin.

Stanley M. Walker, has been appointed Consulting Engineer for the A. B. G. Mining Company, at Sydney Mines, Rico, Colorado, also Advisory Engineer for the Monarch Madonna Mining Co., Monarch, Colo.



Gauthier  
Vorck  
Beall

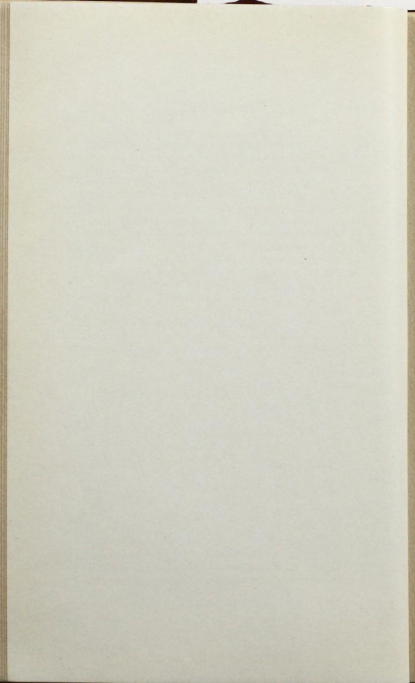
Harrod  
McKnight  
Dodge

# GAMMA CHAPTER

Barris  
Davis

Essig  
Burns  
Duggleby

Shanley  
Follansbee  
Bicknell



## DELTA CHAPTER.

Established May 23, 1911

Case School of Applied Science  
Cleveland, Ohio

By E. ROSS HOUSHOLDER, '17, Associate Editor



FTER enjoying a most prosperous year, members of Delta Chapter wish to share their good cheer with the sister chapters in Theta Tau. To them we wish to extend our very best wishes for their future welfare.

Delta chapter had but seven active members in school at the beginning of the first semester in 1914. Only three of these were staying at the house, together with three alumni members. The active enrollment has since that time been increased to nineteen. Delta was unfortunate in that six of its members failed to return to school in September; however, most of these men expect to return in September 1915. Brother Housholder re-entered at the beginning of the second semester and with his return we now have nine men living at the house.

The house committee at present is on the look-out for a larger house. We hope to be in a more satisfactory location before the end of the school year in order that everything may be in readiness for next autumn.

During the June practice term of last summer the number of men staying at the chapter house was considerably reduced.

In the summer months four alumni, C. F. Koehler '09, C. A. Braun Ex. '16, R. M. Greenslade Ex. '16, and K. E. Moree Ex. '16, together with E. R. Housholder '17 stayed at the house. The Cleveland Alumni Association held monthly meetings here during the summer.

Recently the various fraternities at Case have started to keep records of the scholastic standings of

their individual members. The faculty has co-operated in this matter by compiling a monthly report of all the fraternity and non-fraternity men based on the percentage of failures. Theta Tau has stood highest in rank in this regard since the innovation was started. It may not be out of place here to add that 50 per cent of our eligible men are members of Tau Beta Pi and that since the founding of our chapter about 33 per cent of our men have been elected to Tau Beta Pi.

For 1914-15, brother Churchill is president of Tau Beta Pi; brother Diemer is corresponding secretary; and brother Kline is representative to the college senate for that organization.

Last spring brother R. J. Anderson, '14 was elected to membership in the society of Sigma Xi. The thesis work he carried on concerning "The investigation of the equilibrium diagram of the system cuprous sulfide-ferrous sulfide series" was most original.

We are well represented in the various student activities, viz.

Brother Sprowl is a member of the Dramatic Club which aided in the production of the Home Concert of March 18, 1915.

Brothers Willson, Diemer and Krill are members of the Glee Club.

Brothers Sprowl and Willson are connected with the Case band.

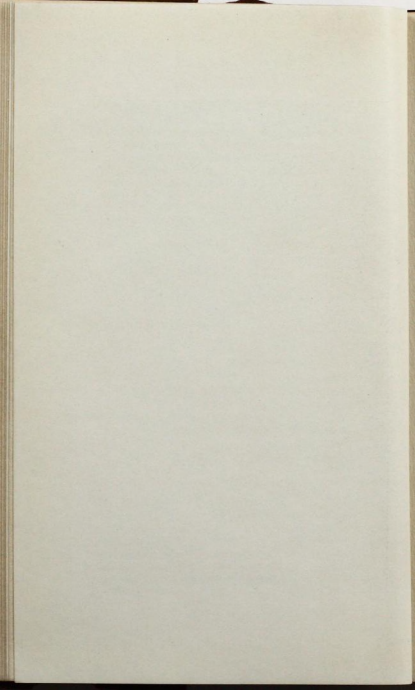
In football brothers Kline, Diemer, Applegate, and Kaiser won their numerals.

Inter-fraternity basketball was again resumed this year with eleven teams competing. Delta was represented by brothers Churchill, Ganzenmueller, Buel, Housholder, Freeman, McInnes and Willson. All men making fraternity basketball teams were excused from compulsory gymnasium work by the faculty.



# DELTA CHAPTER

Freeman	Buell	Ganzenmueller	Kaiser	Krill	Leibing
Sprowl	Churchill	Willson	Kline	Housholder	Applegate
		Abbey		MacInnes	Diemer
					(Also—Kodet, Stevens, Craun and Driscoll.)



The Pick and Shovel club, which boasts of having the best club on the campus, has enrolled brothers, Kline, Applegate, McInnes and Willson. Brothers Diemer and Abbey are members of the Mechanical club. Brother Churchill is our only member of the Stadia club, which is composed of civils. He is chairman of the entertainment committee.

All student activities in school are controlled by a student senate. Brother Sprowl is the representative from our fraternity, while brother Kline was elected from the Tau Beta Pi.

As members of various committees under the direction of the board of managers of the Case Club, brothers Ganzenmueller, Kaiser and Housholder have done efficient work for the welfare of the club.

Through the efforts of Dr. Van Horn, professor of mineralogy, students here are enjoying the benefits of a gymnasium and club. The gymnasium was opened January 15, 1915, although the formal dedication took place March 20, 1915. The indoor running track, large basketball floor, plunge showers and locker room are features of the gymnasium.

The Case Club membership includes all students, faculty members, and alumni (as honorary members.) The club includes a number of rooms in the same building with the gymnasium, which are to be used by the various clubs and student organizations at Case. A large club and lounging room, appropriately decorated, a big dining room, where meals are served, and where different school banquets and suppers may be held, a billiard room, bowling alleys, are all provided, together with other features intended for the pleasure and enjoyment of the men. The whole is under the control of a board of managers, composed of three seniors, two juniors, one sophomore, and one faculty member. Dances are held in the club and

gymnasium by the fraternities and other organizations.

Each year the various engineering departments have the students go on practice trips, where they are given practical instruction. Brothers Kline and Applegate accompanied the junior miners on their June practice trip to Mineville, New York. Here they became acquainted with brother Rigby, '12, of Beta Chapter. After a two weeks stay in the magnetite region the trip was resumed through New Jersey with an inspection of the mining and metallurgical plants.

Among our members that were in the party of eighty-three men in the freshman camp at Waynesburg, Ohio, were brothers Main, Housholder, Ganzenmueller and Kaiser.

The first two weeks of April of this year brothers Abbey and Diemer went with the senior mechanicals on a inspection trip through the northern and central western states. At the same time brother Churchill was with the senior civils on a trip through the east. The senior miners took no spring trips.

Six of our number will graduate on May 27, 1915, as follows: McInnes, Kline and Applegate in the metallurgical mining department; Diemer and Abbey in the mechanical department; Churchill in the civil department. Our Chapter together with the other fraternities will hold open house on Commencement day.

During the first semester we had two initiations at the chapter house. On October 12, 1914, brothers Liebing, Freeman, Willson and Buell were taken into Theta Tau, and on November 23, 1914, brothers Ganzenmueller, Kaiser and Krill were initiated. All these men are sophomores. In accordance with a recent ruling of the student senate no freshmen are initiated at Case during the first semester. On March 22, 1915, we held the first initiation of the second

semester. Then brothers Kodet '18, Stevens '18, and Craun '17, were initiated. Since then Driscoll, '18, has been pledged.

Our annual December banquet to the new men was held at the Colonial Hotel, on the evening of December 12, 1914. Among the out of town alumni present were:

C. F. Koehler, '09, of Elyria, Ohio.

Roy Wallis, '10, of Bessemer, Pa.

D. B. Frisbie, '11, of Toledo, Ohio.

R. P. Heston, Ex. '14, of Toledo, Ohio.

Many good suggestions were offered the active members by the older men.

The social side of life has by no means been neglected by Delta during the past year. The first dinner dance was held on November 20, 1914. After dinner at the chapter house the party went to the Roadside Club and danced throughout the remainder of the evening. The party was chaperoned by Professor and Mrs. Allen. On February 3, 1915, the Roadside Club was likewise the scene of our second dance. A dinner party was given on March 18, 1915, at the chapter house preceeding the attendance at the Home Concert at the Duchess theatre.

Many of the happenings concerning the Delta chapter of Theta Tau during the past year have here been recalled. Not a few notes undoubtedly have slipped the editors' attention. No attempt has been made to tabulate these matters in chronological order; rather we take this means of giving our alumni, our active members and our sister chapters, an idea of what we are doing and have done during the past year. It is our belief that a fraternity's standing in any school is relatively proportional to the standing of its individual members and the activities in which they take a part.

Delta Chapter, wishes to urge all Theta Tau men to pay us a visit any time they may be in Cleveland. To all is extended the very best wishes and good fellowship in Theta Tau.

DELTA.

Theta Tau House,  
2153 Fairmont Road,  
Cleveland, Ohio.

## DELTA ALUMNI NOTES.

G. E. Alderson, '09, is still with the Nichlos Copper Company, at Brooklyn, New York. We certainly would appreciate a letter from him.

J. S. Applegate, '15, will graduate in May. He expects to locate in Youngstown; the steel town always did have a certain charm for "Jack."

Carl A. Braun, Ex. '16, is doing time at the Industrial Machine Company, Cleveland, Ohio. He expects to enter Ohio State University next autumn.

C. S. Arms, '12, comes down from Toledo, Ohio, about once a month, to visit his many friends here. He is assistant metallurgist with the Willys-Overland Company.

C. A. Bever, is superintended of the foundry at the Otis Steel Company, in Cleveland. He is also treasurer of the Cleveland Alumni Association.

O. C. Budde, is secretary of the Cleveland Alumni Association and incidently teaches in the Cleveland high schools.

L. A. Collier, '14, is with the Prefection Spring Company, of Cleveland, Ohio. He was married in July, 1913, but kept the secret for a year.

D. B. Frisbie, '11, is president of the Home Fuel Company, at Toledo, Ohio.

V. C. Fugman, is with the National Lamp Association, Nela Park, Cleveland, Ohio.

A. C. Hasse, is occupied with the real estate business now in addition to attending the Cleveland Law School.

C. F. Koehler, '09, is chief metallurgist at the Garford Company, Elryia, Ohio. "Chief" spent last summer at the chapter house.

R. M. Greenslade, Ex. '16, was in vaudeville for about three months last fall, but on request of the pater he forsook the board for the Industrial Machine

Company, in Cleveland, Ohio.

W. C. Main, Ex. '17, announced his marriage to Miss Jesse Kurz, of Ashtabula, Ohio, at the February dance of the chapter at the Roadside Club.

E. R. Housholder, '17, was editing a newspaper at Bowling Green last fall, but decided to return to school the second semester. He is still advertising "The Capital of Wood County."

R. D. Malm, has returned from Rutland, Vermont. He is an engineer with the Cleveland Illuminating Company, here in Cleveland.

A. R. McLaughlin, is vice president of the Cleveland Alumni Association. He is still with the Standard Oil Company.

L. B. Riddle, is with the Marietta Oil Company at, Nowata, Oklahoma. We would like to receive a letter from him.

H. L. Rose, Ex. '16, has completed his pharmacy course at Ohio State University. He is with the Story Cobb Company, Cleveland, Ohio.

J. C. Scott, Ex. '14, finds time, in addition to his studies, for managing the Glee Club, Dramatic Club and college band at Western Reserve University.

E. R. Stein, is with the Dow Chemical Company, at Midland, Michigan.

E. A. Taylor, is president of the Cleveland Alumni Association. He is also chief chemist with the Grass-elle Chemical Company, Cleveland, Ohio.

Carl R. Heena, Ex. '17, is foreman of the machine shop, with the Court Street Garage Company, Bowling Green, Ohio. Occassionally, Heena, makes Cleveland a visit. He is planning on re-entering Case School next year.

K. Earl Morse, is draftsman with the Wallace Tractor Company, Cleveland, Ohio.

Much credit is due brother R. J. Anderson, for his aid in compiling Delta's letter this year.

## EPSILON CHAPTER.

Established May 4, 1911

University of California  
Berkeley, California

By W. D. McMILLAN, '13, Associate Editor.



It is with pleasure that Epsilon receives this opportunity to greet her sister chapters through The Gear. Our hearty good will and fraternal salutation to every wearer of The Gear-Pin! May the spirit of H. and T. guide us through the future as in the past!

The fiscal year has been fraught with weighty matters for Epsilon. We have labored under a considerable handicap due to the absence of Prof. Louderback throughout the year. Last May he announced that the Standard Oil Co., had claimed his services for the ensuing year, but that he felt that the interests of the chapter were safe in the hands of those who remained.

The national convention to be held in Berkeley September 8 to 11 inclusive of this year, has been occupying the attention of Epsilon Chapter. The general plan of the convention was outlined in the last Gear.

It is expected that the Grand Officers will arrive in Berkeley in time to meet on the 7th, and prepare the business in such a way that the convention can act on it with as little delay as possible.

The following is a tentative program for the convention:

- Sept. 7th. 8 P. M.—An informal “get-together” smoker at the Hofbrau Cafe in Oakland.
- Sept. 8th. 9 to 12 A. M.—First business session.  
7 P. M.—Tug ride around San Francisco bay.

- Sept. 9th. 9 to 12 A. M.—Second business session.  
1 P. M.—Trip to Mt. Tamalpais.  
7:30 P. M.—Lecture by Bro. George D. Louderback.
- Sept. 10th. 9 to 12 A. M.—Third business session.  
(Afternoon and evening open).
- Sept. 11th. 8 A. M. to 5 P. M.—Trip to Selby.  
7 P. M.—Formal banquet at Techau Tavern.
- Sept. 12th. There will be a special trip arranged for all those who care to go to the Big Trees at Santa Cruz.

It is planned to sell a ticket to each member upon his arrival in Berkeley, which shall cover his expenses in connection with the convention (exclusive of board and lodging). This ticket will be in sections, each section covering one feature of the entertainment planned. The price of the ticket will not exceed \$10.00.

Five new men were initiated into Epsilon on Sept. 25th, of last semester, as follows: Edgar Woodcock, '14, J. M. Douglas, '15, J. L. Waithman, '15, A. M. Hazzard, '15, C. L. Moody, '16. At the same meeting E. A. Hersam, Associate Professor of Metallurgy, was received as an honorary member, and has since taken a great interest in chapter affairs.

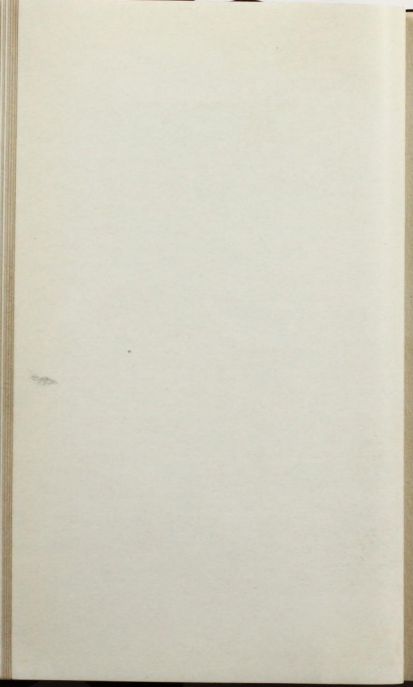
The installation of officers for the spring term was held at the Hofbrau Cafe in Oakland during the mid-examination season. "Pop" Kestler served up his best for the occasion. The regency was placed in the capable hands of "Dusty" Rhoades.

The second term election has added to our number the following worthy men: E. Y. Dougherty, '15, H. A. Brett, '15, T. D. Kirwan, '15, W. G. Farnlacher, '16, F. J. Hoenigman, '16. They have only recently



# EPSILON CHAPTER

Feeley	Buwalda	Kerr	Kew	Hazard	Bretherton	Geis
Vanderleck	Packard	Davis	Rocca	Hersam	Moody	Woodcock
			Rhoades			



passed through the initiatory process, but are already staunch supporters of H. and T.

The hearts of all the miners were saddened during the closing days of last term by the sudden death of Professor S. B. Christy, Dean of the College of Mining since 1893. Although not a member of Theta Tau, he was highly respected and revered by all the members. His loss is felt not only here, but all over the world where mining occupies men's minds.

From the scholastic point of view, Theta Tau stands high in the list of professional fraternities at California. This year bros. Buwalda and Packard will receive the degree of Ph. D. in Palaeontology. Both have been University Fellows, and both have contributed largely to west coast geology. Great things are expected of them.

Epsilon was well represented in the annual honor society elections. Bros. Woodcock, Rocca, and Feeley made Sigma Xi; bro. Farnlacher was elected to Tau Beta Pi, and Betta Kappa Alpha received bro. Moody.

Bro. Feeley received the B. S. degree at Christmas and is now enrolled as a graduate student in mining. As a side issue he is teaching the mysteries of mineralogy to the uninitiated. Bros. Rhoades and Rocca will graduate this May as Bachelors of Science in mining, while Bros. Kerr, Vanderleck and Douglas will receive the new A. B. degree in Geology.

The outlook for Epsilon's future is bright. The prospective material in the Sophomore Class in mining is excellent; we will undoubtedly be able to add a number of boosters to the chapter-roll when initiation season rolls around again.

Then, too, we are anticipating bro. Louderback's return, an event of vital interest to Epsilon. His party has been exploring China in a reconnaissance way, with the intent of finding new wealth for the

Oil Trust. The thing that will appeal to all the brothers is that the party is entirely a Theta Tau aggregation. For his assistants Professor Louderback chose "Art" Eaton, Roy Morse, "Tucky" Taliaferro, and Frank Hudson, all Epsilon alumni. We expect all these men to continue graduate work when they return next year, and their presence will mean much to the chapter. We are all hoping that they will arrive in time for the convention.

In closing we wish to call to the minds of all the brothers and alumni of Theta Tau the slogan adopted at the last convention—"Frisco in 1915"—and remind them that the time is now at hand, and that Frisco is ready to welcome them. We hope all of you are planning to visit the Exposition, of which we are duly proud. When will there be a better time to see it than during convention week? By that time the present infant wonder of the world will have achieved full maturity; let not one H. and T. brother miss the inspiration that awaits him at the Jewel City.

It will greatly facilitate matters for our convention committee if each member will communicate to our scribe his intention to attend, and approximately the time when he will arrive.

May the prosperity and happiness that we see in prospect for ourselves be the portion of all the sister chapters in H. and T.

EPSILON.

## EPSILON ALUMNI.

Brother Hendricks took his B. S. Degree and himself up to Grass Valley last Christmas and has since been cyaniding for the Empire.

C. E. Waldner, '13, is in business in San Francisco.

Casey Campbell is mining and fighting Mexicans at Sinaloa.

A. K. Hegeman, '14, is employed at Ely, Nevada.

R. W. Pack and "Walt" English are looking after the interests of the U. S. Geological Survey on the coast.

Edgar Woodcock handled the instruction in Mineralogy last term, but this year was appointed the right-hand assistant of the State Mineralogist, and now boasts of a private office in the State Mining Bureau.

"Reg" Stoner is assisting at the Standard Oil's exhibit at the Exposition.

"Don" McLaughlin came near grabbing the University Medal last year, and on the strength of that he has exposed himself to the Harvard Graduate School.

Percy Thompson is one of the Standard Oil's main stays, in the Fullerton fields.

George Tickell has dropped mining and is studying medicine at Stanford.

"Stan" Arnot is doing what he can for the North Star Mine.

"Johnnie" Suman is making quite a reputation for himself as an oil geologist. He is employed by the S. P. in the Texas fields.

G. B. Moody is physical director at the Berkeley High School.

Werner Lawson is field geologist for the S. P. in Nevada.

"Fritz" Davis is rapidly becoming a sure enough "Prof." He is giving a course on fault problems which has made us all sit up with ourselves to the wee sma' hours many a time and oft. In addition he is wet nurse to the flock of seismographs in the basement of the library. He is Lord High Keeper of the elastic rebound theory at California.

"Doug" McMillan was on the campus last term and sported a Van Dyke that ran bro. Louderback's a close second. In fact, several of the fellows duked him respectfully and asked him how he had enjoyed his trip to China. "Doug" is Alfred Witman's first assistant at Cobalt.

## ZETA CHAPTER

Established April 17, 1912

University of Kansas at  
Lawrence, Kansas

By C. VAN DERLIP, '16, Associate Editor



WHEN Zeta Chapter mobilized its forces last September, eleven brothers responded to roll call and declared themselves back on the job and ready for another lap in the race for learning. We have since then succeeded in pledging and initiating thirteen more into the ranks of Theta Tau, bringing our number up to twenty-four. The following were initiated last fall (1914): Harl Russell, Darl James, George Smee, W. E. Brown, G. C. Harding, C. W. Harding, L. B. Smith, and C. VanDerlip. At the first of the year Don Rankin, Lawrence Cole, A. R. Bartell, Hugh Crawford and Andrew Groft were initiated. Paul Diehl, C. J. Wakenhut and George Yeokum are pledges.

In school honors Theta Tau has had her share, if not more. James is Captain of next year's football team; Russell, Burton, Groft, are "K" football men; C. J. Painter and Smee are each wearers of "K" baseball sweaters, while Cole is a member of the so-far-undefeated basketball team and has won his "K." N. W. Brown is president of the Engineering school; Templin is president, James is vice-president and pledge, Yeokum is secretary, of the Civil Engineering Society. Yeokum is also manager of the Sophomore Hop. W. E. Brown is vice-president of the Student Council and engineering editor of the Kansas annual, the "Jawhawker." Carl Painter is a member of the Glee Club and has a part in the senior play. Ackers is a member of the Student Council.

Tau Beta Pi was installed in Kansas University in the early part of December with the following Theta Taus among the Charter members: Newcomber, Nutting, Templin, W. E. Brown and C. W. Harding. The following men graduated last spring (1914): R. L. Deger, G. R. Murphy, L. C. Angevine, S. G. Fairchild, L. W. Kinnear, J. S. Nutler, J. L. Bliss, James Parker, O. A. Dingman and L. H. Dodd. Brothers C. E. Painter and L. B. Smith graduate at the end of the present semester (February 1915).

Zeta Chapter has given three smokers so far this year and hopes to be host at several more during the semester just starting. The first of these smokers was given at the Sigma Alpha Epsilon house and a number of faculty members besides about thirty students were present. At these informal affairs, talks are made by faculty members, active brothers and alumni members, whenever the latter can be present. A judicious admixture of eats, talks, and smokes makes such occasions very enjoyable and are not the least important of the many things that keep Zeta Chapter in touch with the school.

Our long cherished hopes for a house of our own have not yet been realized but we have definite plans on foot and expect to have our own quarters when school opens next fall.

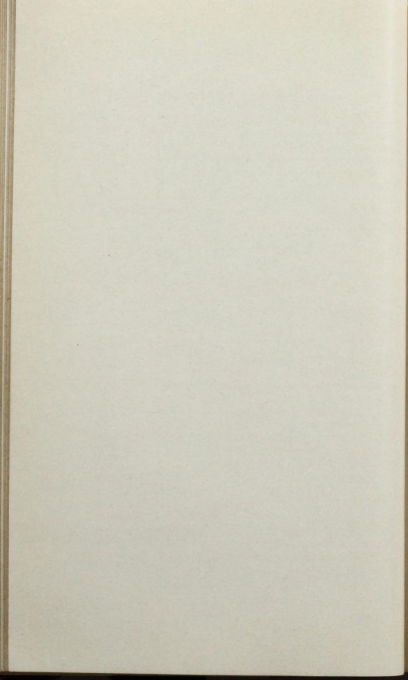
Zeta's annual banquet will be held some time in the future at the Eldridge house and we look forward to a very enjoyable repast. Brother Ackers is managing the affair.

The present officers of Zeta Chapter are: Brother C. E. Painter, Regent; Brother C. J. Painter, Vice-Regent; Brother G. C. Harding, Scribe; Brother W. A. Burton, Treasurer; Brother Malcolm McCune, Historian; Brother C. VanDerlip, Corresponding Secretary.



# ZETA CHAPTER

Smee	Nutting	Burton	Groft	Newcomer	Bartell	Crawford
Brown	James	Professor Rice	Painter	Moffit	Russell	Smith
Templin	Painter	Van Derlip	Brown	McCune	Harding	Rankin
						Harding



Some of us will undoubtedly be in San Francisco when school is out this spring and hope that a goodly number of loyal Theta Taus will be there. In the meantime Zeta Chapter extends her very heartiest good wishes for success and prosperity to every Theta Tau man.

#### ZETA.

C. VanDerlip, 1333 Tennessee Street, Lawrence, Kansas.

---

#### ZETA ALUMNI PERSONALS.

Lawrence Kinnear, '14, is an engineer on the New York subway. His address is 137 Riverside Drive, N. Y.

Geo. N. Murphy, '14, is with the Frisco Railroad. His address is Springfield, Mo., care Frisco.

Sam Fairchild, '14, is secretary to Lieut. Gov. Morgan of Kansas. Address, care Senate Chamber, Topeka, Kansas.

C. B. Hostetler, '14, is with a mining company at Morenci, Ariz.

Chas. M. Coats, '13, is city engineer and superintendent of the Water Works at Chanute, Kansas. His address is 321 S. Evergreen.

Chas. W. Tholen, '14, is with an engineering company at Camden, N. J. His address is 428 Linden St.

H. H. Campion, '13, is with the Westinghouse Electric Co., Wilkinsburg, Pa. Address, 419 Ross Ave.

W. F. Price, '13, is with the signal department of the Santa Fe at Topeka, Kansas. His address is 123 E. 10th St.

R. L. Seger, '14, is in Topeka, Kansas. His address is 1132 N. Harrison St.

R. N. Hoffman, '13, is with the Chili Exploration Co., at Chiquiacamata, Chili (via Autofogasta).

O. S. Dingman, '14, has been with the Chanton Mining Co. at La Paz, Hondouras, C. A. He is now with the Mohawk Mining Co. at Goldfie d.

John H. Butler, '14, is with a bridge construction company at Kansas City, Mo. Address, 4219 Paseo.

James Parker, '14, is chief engineer of field tanks with the White & St. Clair Oil Co., Cushing, Okla. His address is Box 324.

Leland Angevine, '14, is with the firm of Worley & Block, consulting engineers, Kansas City, Mo.

#### ZETA.

C. VanDerlip, 1333 Tennessee St., Lawrence, Kansas.

## ETA CHAPTER

Established March 23, 1913

Massachusetts Institute of Technology  
Boston, Mass.

By KEMERTON DEAN, '16, Associate Editor



HE past year has been a most successful one for Eta Chapter. Of the thirty-three active men in the Chapter last year, eighteen returned to college in the fall.

Previous to the annual fall initiation, a smoker was held in the Copley Square Hotel, to which were invited about thirty men whom we considered promising material for Theta Tau. The smoker was a great success, and gave the members opportunity to become acquainted with all the men under consideration. About three weeks later the following men were initiated: T. W. Little of Hartford, Conn., E. H. Barry of Newton Center, Mass.; A. F. Shuey of Camden, Ohio; V. Young of Sewickley, Pa.; J. Hepinstall of St. Thomas, Ont.; F. C. Holbrook of Boston, Mass.; R. R. Harper of Des Moines, Iowa.

Shortly after initiation, brother Harper left college to accept an excellent position with the B. F. Goodrich Company in Akron, Ohio. This left twenty-four men in the active Chapter.

Our second annual initiation will be held in about a month, and preparations are now taking place for another smoker similar to the one held last fall.

Our meetings have been extremely interesting, and consequently very well attended. Some of the brothers who are engaged in original thesis work present papers on their respective subjects. Among these we have had a description of an electric flow-meter, under process of construction by one of the

seniors. Diamond drilling was the subject of another paper. One of the brothers who is making original investigations in mathematics, read us a very interesting paper on the geometry of homogeneous or tri-linear co-ordinates, which deals with equations higher than the third degree.

Practically all the brothers are actively engaged in under-graduate activities. Six of the brothers are members of Osiris, the senior society; four are on the Institute Committee, the governing board of undergraduate activities. We have also the captain of the hockey team, the president and the treasurer of the athletic association, the chairman and one member of the Point System committee, the general manager of the Tech Show, five members of the Senior Class Day committee, one member of the Junior Prom committee, and the athletic editor of Technique.

We are looking forward with great enthusiasm to the removal of the Institute to its new location in Cambridge on the Charles River. Already the new athletic field has been in use for several months, and is regarded as having the widest and fastest track in the country. It is expected that the Institute will be in its new quarters in the fall of 1916, and at that time Eta Chapter expects to have permanent quarters.

Eta Chapter extends its greetings to all the chapters and a cordial invitation to any of the brothers who come to Boston.

Eta Chapter looks forward to becoming more intimately acquainted with the other chapters at the convention this year in San Francisco.

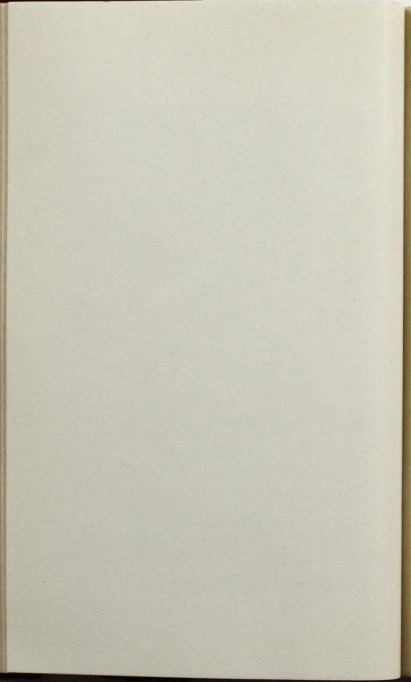
ETA.

Kemerton Dean, 1004 Beacon St., Brookline, Mass.



# ETA CHAPTER

Richmond	Holbrook	Africa	Lowengard	Ross	Krug
Worthington	Huff	Thomas	Lawson	Shuey	Freeman
Fletcher	Camp	Lord	Kittredge	Little	Pyle
Barry	Dean	Walter	Leeb	Hepinstall	Farthing
	Young				



## THETA CHAPTER.

Established May 7, 1914

Columbia University

New York, N. Y.

By R. H. ORMSBEE, '15, Associate Editor



SINCE the initiation of our charter members in May, 1914, the chapter roll has doubled in numbers. Immediately after receiving their instructions in the mysteries of Theta Tau the 1914 members of Theta Chapter initiated the following seven men from the Junior class:

J. W. Alden .....	Met. E.	'15
R. Benson .....	Met. E.	'15
G. F. Coope .....	E. M.	'15
H. H. Howry .....	Met. E.	'15
R. H. Ormsbee .....	E. M.	'15
J. A. Thomas, Jr. ....	E. M.	'15
F. S. Wright .....	E. M.	'15

Then in December of 1914, two members of the senior class and seven of the juniors were initiated. The addition of the following men brought our roll up to sixteen.

G. B. Curwen .....	Met. E.	'15
G. R. Page, B. S. ....	E. M.	'15
R. M. Banks .....	Met. E.	'16
H. Birkett .....	E. M.	'16
J. T. Kemp, B. S. ....	Met. E.	'16
T. B. Kenvin .....	E. M.	'16
W. P. Klugescheid .....	E. M.	'16
T. H. Webb .....	E. M.	'16
F. E. Wormser .....	E. M.	'16

At the first meeting of the college year 1914-15, brother Wright was elected Regent; brother Coope, Vice-Regent; brother Thomas, Treasurer; and brother Ormsbee, Scribe. The following meetings were chiefly devoted to the drafting of By-laws and the discussion of ways and means. When these matters had been thrashed out and settled there came up the question of new men and initiation. The former having been chosen the date for the eventful occasion was set, December 5th. being decided upon as the most convenient and earliest one possible. Bros. C. F. MacCarthy '14, and Roy Wood, '14, very kindly offered us the use of the Beta Theta Pi House, for the occasion and in addition assured us that as a committee of two they would look after the refreshment end of the evening. There has been nothing but praise for the way in which they carried out their part of the agreement. The initiation ceremonies were impressively conducted by our Regent Brother Wright, attended by the whole chapter.

The last meeting before the Christmas Holidays was given over to the reading of a paper on the metallurgy of tin by brother Ernest Kleptko. This paper was very good and was followed by a general discussion of the subject by the chapter.

On their return from the holidays the men were all busy preparing to uphold their high average of scholarship, in the approaching mid-years. We are proud to say this was successfully accomplished.

At our next meeting after the mid-years, we had election of officers, choosing these men; Regent, J. T. Kemp; Vice-regent, R. Benson; Scribe, F. E. Wormser; Treasurer, H. Birkett and Corresponding Secy., T. B. Kenvin. These men hold office for the period of one year.



# THETA CHAPTER

Klugescheid  
Benson

Kennin

Kemp

Thomas

Birkett

Wright

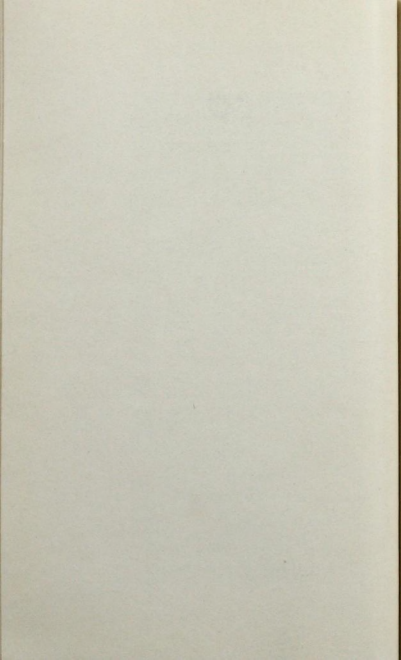
Wormser

Ormsbee

Banks

Howry

Webb



Just at present the committee in charge of such matters, is busily engaged in arranging to have men prominent in mining and metallurgy, deliver informal talks to the chapter. Undoubtedly some of these meetings will be open to the faculty and students of the mining department. In this way we hope to be brought into closer touch with the present day advance in these sciences.

That the men in the chapter are active on the campus is shown by their records. In athletics we have brother Benson, captain of the basketball team, brother Page, on the baseball team, brother Coope, captain of swimming, brother Webb, captain of hockey, brother Wormser, pulling an oar and brother Howry, struggling around on the mats. Athletics however, is not our only line of activity and we are well represented in other branches of campus doings. Brothers Howry and Wright are members of Tau Beta Pi, brother Wright, being their president. In closing Theta Chapter sends best wishes to her older sisters.

Yours in Theta Tau,

R. H. ORMSBEE

## THETA CHAPTER ALUMNI NEWS.

Brothers T. H. Barrett, J. S. Miller, L. V. Lee and C. M. Brister, Jr., have been in the employ of Mr. R. V. Norris, consulting engineer, of Wilkes-Barre, Pa., working on an extensive examination of the Susquehanna Coal Company's anthracite properties. Brother Lee left in November for his home in Mexico. Brother Barrett, has just accepted a position with the Wanakah Mining Company, at Ouray, Colorado. Brothers Miller and Brister are still on the job.

Brother H. E. Bird, Jr., is doing some exploratory work near Morenci, Arizona.

Brother D. G. Campbell, recently married Miss Grace Durant, of Massachusetts. He is professor of metallurgy at University of Washington, Seattle, Wash.

Brother E. I. Williams, is working in a pyrite mine in Canada.

Brother W. W. Colquhoun, is a 2nd. Lieutenant in the Scottish Guards, Great Britain. He is impatient for service at the front.

Brother C. B. Sadtler, is employed as expert metallographer, in Providence, R. I.

Brother G. S. Patterson, is working for the New Jersey Zinc Company.

Brother R. U. Wood, has accepted a position as instructor of metallurgy in Columbia University.

Brother C. F. MacCarthy, returned to the university this year where he has taken up some special extension and research work.

Brother I. W. Hadsell, is now engaged on some temporary work at Garrison, N. Y., while awaiting a mine in Mexico to resume operations where he expects to go as soon as conditions become more settled in that region.

## TWIN CITY ALUMNI ASSOCIATION

Established Feb. 3, 1912

Minneapolis, Minnesota



REETINGS and best wishes to all the brothers in Theta Tau, from the Twin City Alumni Association.

For the season just closed, we held our first meeting at the University Club and our second meeting at the Athletic Club. Both of these meetings were informal. Our first regular meeting was held the first Wednesday in November. At this meeting, brother Otto F. Zelner, of the College of Engineering at the State University, gave a paper on "The Engineers Summer Camp at Minnesota" and described in detail the summer field work. Election of officers was held with the result that there was no change from last year.

For the rest of the year, through the courtesy of brother Arthur Larkin, we held our meetings at the Minneapolis Athletic Club.

At the December meeting, brother George Shepard gave an interesting paper on irrigation in Colorado, illustrated by lantern slides.

At the January meeting, brother Paul Johnson described the new power plant and dam at Coon Rapids on the Mississippi, illustrated by photographs of the work under construction.

Our February meeting, was omitted.

At the March meeting, brother Ike Hanks, who has been doing some special research and association work for the Northwestern Lumbermen, gave us a straight talk on "Efficiency Methods in Modern Business."

At our April meeting, brother Dr. Holman, of the College of Engineering at the State University, told

us about the work that is being done to revise the engineering curriculum and bring it down to date. Dr. Holman, tells us that the Professors job is not an easy one, and the educators' job is still harder.

Brother Al Warren closed the season in a fitting manner by showing us the Illinois Steel Company's moving picture films of the manufacture of steel and incidentally gave us a lot of good information about the iron and steel business, past, present and future.

We feel that the season for our association has been fairly successful. We should be glad to exchange ideas with the other Theta Tau Alumni Associations.

With best wishes, we are

TWIN CITY ALUMNI ASSOCIATION,

WALTER H. WHEELER,

President.

## CLEVELAND ALUMNI ASSOCIATION.

Established Oct. 15, 1913

Cleveland, Ohio



T the close of last year the following officers were elected to serve for the year 1915: President, bro. E. A. Taylor, '11; Vice-President, bro. A. R. McLaughlin, '11; Secretary, bro. A. C. Budde, '12; Treasurer, bro. C. A. Bever, '13.

In looking back over the record of the Cleveland Association, the things that have been accomplished are due in a great measure to the efforts of the retiring President, bro. M. W. Vickery. For the past two years his insistent as well as consistent work, has in a quiet way, put the stamp of approval on all the Association's work, so that it needs no further comment at this time. We are fortunate in having bro. Vickery with us in the capacity of Counsellor at Law.

Through a little effort and some sacrifices we have held meetings every month this past year, with but three exceptions. All of these have been held at the Chapter House. On every alternate month, alumni have met with the active chapter at dinner. After a short business meeting, we have adjourned to enjoy a sociable hour with the members both old and new. Beginning with April 3rd., we are to have a series of papers or talks by the alumni, these will touch on many branches of work. They should be of interest to all.

We have a building fund. What have you Delta Alumni done toward it this past year? Enough said.

The Secretary of the Cleveland Alumni Association, is very anxious to hear from all of the alumni. Please communicate with him as soon as possible.

O. C. BUDDE

1579 Campton Road, Cleveland Heights, Cleveland, Ohio., Secretary of the Cleveland Alumni Association.

# DIRECTORY.

ABBEY, NELSON DANIEL '15	DELTA
3325 Glenwood Ave., Toledo, Ohio.	
ABBOTT, THEODORE S. E. M. '11	ALPHA
Chi Psi	
425 Dayton Ave., St. Paul, Minn.	
Chief Engineer, Liberty Bell Mine, Telluride, Colo.	
AKERS, DEANE EMMETT '16	ZETA
Beta Theta Pi, Abeline, Kansas	
ADAMS, JOHN W. C. E. '11	ALPHA
Chi Psi	
30 Kent St., St. Paul, Minn.	
Hennepin Holding Co., Minneapolis	
AFRICA, WALTER M.	ETA
Student, Sigma, Alpha, Epsilon	
ALDERSON, GEORGE EDWARD B. S. '09	DELTA
Theta Nu Epsilon	
2259 East 90th. St., Cleveland, Ohio.	
99 Messerole Ave., Brooklyn, N. Y.	
ALEXANDER, EDWARD PORTER, '14	ETA
Phi Kappa Psi	
418 Manhattan Bldg., Duluth, Minn.	
ALLEN, ARTHUR '15	BETA
Tau Beta Pi	
323 East Fourth St., Flint, Mich.	
ALLEN, CHESTER ARTHUR '13	EPSILON
1541 Hawthorn Terrace, Berkeley, California.	
Standard Consol Mng. Co., Bodie, California.	
ALSIP, ALBERT ARTHUR E. M. '08	BETA
4937 Woodlawn Ave., Chicago	
ANDERSON, GEO. ANDREW B. S. & E. M. '06	BETA
301 Hudson Ave., Detroit, Mich.	
Engineer, 514 Penobscot Bldg., Detroit, Mich.	
ANDERSON, ROBERT JOHN Student	DELTA
Tau Beta Pi	
2153 Fairmont Road, S. E., Cleveland, Ohio.	

- 
- |   |         |
|---|---------|
| ANDREWS, OLIVER L. B. S. '12                      | ZETA    |
| Powhattan, Kansas.                                |         |
| Gela Valley Bank and Trust Co.                    |         |
| Morenci, Arizona.                                 |         |
| ANDREWS, WORTH BRIGGS E. M. '06                   | BETA    |
| Pres. & Gen'l. Manager, Oro Belle Mines Co.       |         |
| Hart, California.                                 |         |
| ANGEVINE, LELAND CHARLES '14                      | ZETA    |
| 1521 North Hampshire St., Lawrence, Kansas.       |         |
| APELL, GIDEON A. '15                              | BETA    |
| 2528 Iowa St., Chicago, Ill.                      |         |
| APPEGATE, JOHN SAM Student                        | DELTA   |
| 1523 Millicent Ave., Youngstown, Ohio.            |         |
| ARMITAGE, JOHN BARNUM B. S. & E. M. '10           | BETA    |
| Engineer, Oliver Mining Co.                       |         |
| 201 Wolvin Bldg., Duluth, Minn.                   |         |
| ARMS, CHARLES SEELYE B. S. '12                    | DELTA   |
| Care of Dr. P. C. Arms, Cleveland, Ohio.          |         |
| Willys Overland Co., 1801 Adams St.               |         |
| Toledo, Ohio.                                     |         |
| ARNOT, STANLEY L.                                 | EPSILON |
| Phi Kappa Alpha.                                  |         |
| Placerville, California.                          |         |
| ATKINSON, WILLIAM B. M. E. '10                    | ALPHA   |
| Psi Epsilon.                                      |         |
| Barnesville, Minn.                                |         |
| BADGER, ALLEN CARL. B. S. '14                     | DELTA   |
| Tau Beta Pi.                                      |         |
| Chemist Lake Shore R. R. Shops, Collingwood,      |         |
| Cleveland, O.                                     |         |
| BAIRD, LYMAN S. B. S. M. I. T. '14                | ETA     |
| Alpha Delta Phi.                                  |         |
| Wilcox Motor Co., Minneapolis.                    |         |
| BALLARD, JOHN IRWIN, B. S. E. M. '10              | BETA    |
| Sigma Alpha Epsilon, Tau Beta Pi.                 |         |
| Asst. Engineer, Quincy Mining Co., Hancock, Mich. |         |

BANNISTER, ALFRED EDWARD, '15	ETA
Kappa Alpha.	
3300 London Road, Duluth, Minn.	
BARMUM, MARVIN C. M. E. '11	ALPHA
Beta Theta Pi.	
Nor. Machinery Co.	
BARR, JAMES ALLEN B. S. E. M. '07	BETA
Engr. International Agricultural Corp., Mt. Pleasant, Tennessee.	
BARRY, EDWARD '16	ETA
Delta Tau Delta	
BARRETT, THEODORE H. E. M. '14	THETA
Delta Upsilon.	
Care Wanakan Mining Co., Ouray, Colo.	
BARTLETT HIRAM LAWRENCE B. S. E. M. '04	BETA
Care of J. E. Bartlett, Jackson, Mich.	
Contr., Virginia, Minn.	
BATSON, CHARLES DREWERY C. E. '07	ALPHA
Beta Theta Pi.	
Mgr. Republic Creosoting Co., Mobile, Ala.	
251 Government St., Mobile, Ala.	
BAYLESS, GEORGE E. Student	BETA
2221 St. Paul, St., Baltimore, Md.	
BEACH, GEORGE ALBERT B. S. '14	ETA
Sigma Alpha Epsilon.	
Liquid Carbonic Co., 3210 Arthington St. Chicago, Ill.	
BEALL, A. B. Jr. Student	GAMMA
Sioux City, Iowa.	
BEHR, ERNST EDWARD B. S. '10	EPSILON
Beta Theta Pi, Mim Kaph Mim.	
Mgr., Spaulding Ranch, Willows, Glenn Co., Cal.	
BENSON, ANTHONY FREDERICK E. M. '03	BETA
Consulting Engr., Mesabi Engr. Co., Virginia, Minn.	
BENTON, HERBERT G. C. E. '13	ETA
406 Hancock St., Brooklyn, N. Y.	

BERYOUSKY, THEODORE D.	E. M. '09	GAMMA
Supt., New State Mining & Reduction Co.,	Amado,	
Arizona.		
BEVER, CLARENCE ALFRED	B. S. '13	DELTA
Otis Steel Co.,	Cleveland, Ohio.	
BICKNELL, FRANK P.	E. Met. '12	GAMMA
Beta Theta Pi.		
Chemist, T. R. Stanley Chemical Co.		
45 W. 34th. St.,	N. Y. City.	
BICKNELL, H. L.	Student	GAMMA
Clarksville,	Tenn.	
BILICK, DON CARLOS	B. S. '13	EPSILON
Pi Kappa Phi.		
Engels Copper Mining Co.,	Keddie, Cal.	
BIRD, HENRY E.		THETA
Phi Kappa Psi.		
Mount Vernon,	N. Y.	
BISLAND, JOHN BROWNSON	E. M. '13	GAMMA
Sigma Alpha Epsilon.		
Lead,	S. D.	
BLACKMAR, DON C.	'12	BETA
Asst. Chief Engineer, Magma Copper Co.		
Superior,	Ariz., Box 17	
BLISS, JOHN LAWRENCE	'14	ZETA
Engr., Kremer & Vooiol Constr. Co.,	3951 Sullivan	
Ave.,	St. Louis, Mo.	
BODMAN, RUSSELL JOHN	B. S. '13	ZETA
Sigma Xi.		
9289 Hough Court,	Cleveland, Ohio.	
BOESCHE, JOHN P.	B. S. '12	ZETA
Atchison, Topeka & Santa Fe Ry. Co.		
606 W. Main St.,	Chanute, Kansas.	
BRADT, MAURICE L.	'16	BETA
935 S. 4th. St.,	Saginaw, Mich.	
BRAUN, CARL AUGUST	'16	DELTA
Industrial Mch. Co.,	Theta Tau House,	
Cleveland,	Ohio.	

BRETHERTON, SIDNEY ELLIOTT '15	EPSILON
Zeta Psi.	
3006 Colby St., Berkeley, Cal.	
BRISTER, JR. CHARLES M. B. S. '14	THETA
With R. V. Norris Con. Eng., 524 2nd. Nat'l Bank Bldg., Wilkesbarre, Pa.	
BRETT, HENRY AUSTIN Student	EPSILON
37 N. Workman St., Los Angeles, Cal.	
BROCKWAY, ALVAH E. E. E. '09	ALPHA
Tau Beta Pi, Sigma Xi.	
2917 34th. St., Sacramento, California.	
BRODIE, JAMES S. '13	ALPHA
Emerson-Brantingham Co., Minneapolis, Minn.	
BROOKE, LIONEL '14	GAMMA
Kappa Sigma. Golden, Colo.	
BROTHERTON, WILLIAM HENRY '14	ETA
Phi Gamma Delta, Theta Nu Epsilon.	
Station A, Route 2, Dallas, Texas.	
BROWN, LANDON N. '16	BETA
Springport, Mich.	
BROWN, NATHAN WALLACE '15	ZETA
R. F. D. No. 4, Box 49, Lawrence, Kansas.	
BROWN, PERCY DALLAS B. S. '09	BETA
Sigma Alpha Epsilon.	
617 N. 34th. St., Philadelphia, Pa.	
Penn. R. R. Co., Philadelphia.	
BROWN, WALTER REGINALD E. M. '10	GAMMA
Sigma Alpha Epsilon, Tau Beta Pi.	
Nevada Cons. Copper Co., Chief Engr., Ruth, Nev.	
BRYAN, RUSSEL R. E. Met. '08	GAMMA
Kappa Sigma, Hotchkiss, Colo.	
Chief Chemist, Utah Copper Co., Garfield, Utah.	
BUCK, FRED WILLIAM M. E. '09	ALPHA
Phi Kappa Psi, Tau Beta Pi, Sigma Xi.	
Real Estate, Stryker, Manley & Buck, Duluth, Minn.	

BUDDE, OTTO CARL B. S. '12	DELTA
Teacher East High School, Cleveland, Ohio.	
BUDDLE, GEOFFREY ARMSTRONG B. S. '12	
D. S. C. '13	EPSILON
Tau Beta Pi, Sigma Xi.	
86th. Field Co., Royal Engineers	
Aldershot, England.	
BUELL, EDWARD J. Student '17	DELTA
10309 Olivet Ave., Cleve and, Ohio.	
BURKE, GILBERT MICHAL B. S. E. M. '06	BETA
Bullfrog Mining Co., Joplin, Mo.	
BURNS, JAY '15	GAMMA
Kappa Sigma.	
Franklin, Penn.	
BURRIS, JR. SAMUEL J. '15	GAMMA
Sigma Nu. Pueblo, Cal.	
BURT, CURTIS FAIRBAIRN B. S. E. M. '13	BETA
Care Pittsburg-Dolores Mng. Co., Rockland via	
Yerington, Nevada.	
BURTON, WILLARD AUGUSTUS '16	ZETA
Mound City, Kansas.	
BUSH, JOHN C. Jr. '10	ALPHA
Sigma Chi.	
American Bridge Co., Gary, Indiana.	
BUTLER, JOHN S. '14	ZETA
Keltz. United Mfg. Co., 3219 Pase Blvd., Kansas	
City, Mo.	
BUWALDA, JOHN PETER B. S. '12	EPSILON
Sigma Alpha Epsilon, Beta Kappa Alpha, Sigma Xi	
2519 Ridge Rd., Berkeley, Cal.	
CAINE, FREDERICK EARLE B. S. E. M. '12	DELTA
The Ten-Far Co., Cleveland, Ohio.	
CALLAHAN, THOMAS W. '14	GAMMA
Beta Theta Pi. Golden, Colorado.	
CALVERT, CLARENCE EMMET E. M. '12	GAMMA
Engr. Dept., Britannia Mng. & Smelting Co., Ltd.	
Britannia Beach, B. C., Canada.	

CAMERON, C. BURCH	B. S. E. M. '10	BETA
Tau Beta Pi.		
Westinghouse, 419 Ross Ave., Wilkinsburg, Pa.		
CAMPBELL, DONALD G.		THETA
Sigma Xi, Tau Beta Pi. Atlanta, Idaho.		
CAMP, ORTON P.	Student	ETA
Zeta Psi.		
CAMPBELL, JR. MILTON KERR	'13	EPSILON
Chi Psi, Tau Beta Pi.		
2521 Hearst Ave., Berkeley, Cal.		
CAMPION, HENRY H.	B. S. '13	ZETA
Beta Theta Pi, Skull & K.		
Westinghouse Club, Wilkinsburg, Pa.		
CAPSER, LEO WOODS	'15	ALPHA
Beta Theta Pi.		
934 Portland Ave., St. Paul, Minn.		
CARLSON, ARTHUR EUGENE	'14	BETA
Theta Tau House, Houghton, Mich.		
CARPENTER, P. H.	E. M. '10	GAMMA
Phi Delta Theta, Tau Beta Pi.		
McGill, Nevada.		
CARROLL, WILLIAM F.	B. S. E. M. '08	BETA
Const. Div., City of Chicago, 3040 Sunnyside Ave.		
Chicago, Ill.		
CASE, RAYMOND A.	B. S. E. N. '12	BETA
Tau Beta Pi.		
805 7th. Ave. N., Great Falls, Montana.		
Investigator, B. & M. Reduction Dept., Anaconda		
Mining Co., Anaconda, Montana.		
CHAFFIN, CHARLES EDWARD	B. S. E. M. '13	BETA
Three Kings Silver Mining Co., Park City, Utah.		
CHANDLER, MALCOLM D.	'09	ALPHA
Phi Kappa Psi.		
First Nat. Bank, Minneapolis, Minn.		
CHAPMAN, WENDELL PHILLIPS	B. S. '14	ALPHA
Chi Rho Theta. Highway Commission.		
703 4th. Ave., S. E. Minneapolis, Minn.		

CHESBRO, IVAN A. '15	BETA
Theta Tau House, Houghton, Mich.	
CHURCHILL, HARRY DEWARD '15	DELTA
Tau Beta Pi. Student	
O. T. House, Cleveland, Ohio.	
CLAPP, LEROY P. E. M. '08	GAMMA
Sigma Alpha Epsilon.	
Domain Road, South Yerra, Melbourne.	
CLARKE, JOHN CARLYLE '16	BETA
Earlville, N. Y.	
CLEVELAND, BLISS S.	ALPHA
319 14th. Ave., S. E. Minneapolis, Minn.	
COATS, CHARLES M. B. S. '13	ZETA
Coats & Amjx, Brokers, 118 W. 7th. St., Taylor, Texas.	
COBBAN, ROLLO E. E. '09	Tau Beta Pi. ALPHA
Westinghouse E. & M. Co., Butte, Montana.	
COLES, HARRISON LEEDS B. S. '13	EPSILON
Smith, Emery & Co., 651 Howard St., S. E. San Francisco, California.	
COLLER, WALTER A. '14	Student ALPHA
1149 Ashland Ave., St. Paul, Minn.	
COLLIER, LLOYD ALBERT B. S. '14	DELTA
Tau Beta Pi.	
Perfection Spring Co., 2050 E. 93rd. St., Cleveland.	
COLLINS, GEORGE M. B. S. '11	EPSILON
Tau Beta Pi.	
American Smelting & Refining Co., Garfield, Utah.	
COLQUHOUN, W. W.	THETA
Alpha Delta Phi.	
Tunbridge Wells, England.	
COLVIN, JAMES A. '15	ALPHA
Tau Beta Pi.	
629 15th. Ave., S. E. Minneapolis, Minn.	
CONLEY, WILFRID EDMUND E. E. '10	ALPHA
Sigma Chi, Tau Beta Pi.	
Nat'l. Lamp Works of G. E. Co., Cleveland, Ohio.	

COOK, WALLACE RONALD	E. M. '10	BETA
Phi Kappa Sigma, Tau Beta Pi.		
Asst. Supt., Castile Mining Co., Wakefield, Mich.		
COPELAND, CLARENCE E.	E. M. '13	GAMMA
Beta Theta Pi, Tau Beta Pi.		
Britannia Mining & Smelting Co., Britannia Beach, B. C. Canada.		
Died March 22nd. 1915.		
COTTON, C. W.		DELTA
2153 Fairmount Road, Cleveland, Ohio.		
COUGHLIN, DANIEL EMMET	'15 Student	BETA
726 Water St., Hancock, Mich.		
COUNTRYMAN, RALPH	B. S. '11	EPSILON
Theta Delta Chi.		
653 Chetwood St., Oakland, Cal.		
COWIN, JAMES	E. M. '07	ALPHA
Chi Psi.		
407 Boyd Bldg. Winnipeg, Canada.		
Cowin & Fee, Ltd.		
CRABB, JAMES MOOREY	E. M. '09	BETA
Draughtsman, City Eng.'s Office, Detroit, Mich.		
CRAIG, ERICK K.	B. S. '14	EPSILON
Sigma Nu.		
Skidoo Mines Co., Skidoo, Col.		
CRAMER, CHARLES F.	'16	BETA
227 Michigan St., Toledo, Ohio.		
CROCKER, BERTRAM ERWIN	B. S. '11	BETA
Engr. Inspiration Const. Copper Co., Miami, Ariz.		
CRAUN, JOHN M.	Student	DELTA
2153 Fairmont Rd., Cleveland, Ohio.		
CRUTCHER, E. R.	'14	GAMMA
Sigma Alpha Epsilon.		
Salida, Colo.		
CURTIS, BENJ. JOHN	'14	ALPHA
Delta Tau Delta.		
Sanitary District of Chicago, 208 Ben Oak Ave., Blue Island, Ill.		

CURTIS, LEROY PERCY	E. M. '08	GAMMA
Kappa Sigma.		
Struc. Engr., N. P. R. R., 501 N. P. Bldg., St. Paul, Minn.		
CURTIS, THOS. HENRY	C. E. '12	ALPHA
Delta Tau Delta.		
Fairmont, Minn.		
CURTISS, LINDSLEY B.	B. S. '09	ALPHA
Sigma Alpha Epsilon.		
Structural Engr., N. P. Ry., 501 N. P. Bldg., St. Paul, Minn.		
CUTLER, JR., FRED ABBOTT	'17	ALPHA
Psi Upsilon.		
629 E. 19th. St., Minneapolis, Minn.		
DALLIMORE, ARTHUR N.	C. E. '08	ALPHA
Box 327, Fowler, Colo.		
DAVID, JOE	'13	BETA
Veteran Mine, Kimberly Utah.		
DAVIS, ELMER FRED	B. S. '10 M. S. '12	EPSILON
Sigma Xi, Tau Beta Pi, Phi Lambda Upsilon.		
Instructor in Geol. & Mineralogy, U. of Cal., Berkeley, (Bacon Hall) Cal.		
DAVIS, GILMORE SHERWIN	'15	GAMMA
Sigma Alpha Epsilon.		
Student, 321 Maple St., Trinidad, Colo.		
DAVIS, SHERWIN BENNETT	B. S. '12	EPSILON
Sigma Chi, Tau Beta Pi, Sigma Xi.		
Mining, Eureka, Utah.		
DEAN, KEMERTON	Student	ETA
DE CAMP, W. V.	E. M. '08	GAMMA
Tau Beta Pi.		
Mayer, Arizona.		
DE LAITRE, HORACE H.	'15	GAMMA
Delta Tau Delta.		
Golden, Colo.		
DENNIS, RICHARD	'17	ALPHA
Sigma Alpha Epsilon.		

DE VEY, CHARLES H. '16	ALPHA
Chi Psi.	
804 E. 3rd. St., Duluth, Minn.	
DICK, JAMES E. '12	GAMMA
Sigma Alpha Epsilon.	
667 Market St., Akron, Ohio.	
DICKEL, ARNOLD CLEMENS '13	EPSILON
Sigma Phi Epsilon.	
1711 Euclid Ave., Berkeley, Cal.	
DIEMER, CLARENCE PETER '15	DELTA
Tau Beta Pi.	
6409 St. Clair Ave., Cleveland, Ohio.	
DILLINGHAM, GEORGE BURGER '10	EPSILON
Phi Delta Theta.	
Gen. Manager, San Vincente Mfg. Co.	
812 Crocker Bldg., San Francisco, Cal.	
DINGMAN, OSCAR ALDRICH '14	ZETA
Mohawk Mining Co., Goldfield, Nevada.	
DITTUS, EDWARD J. E. Met. '11	GAMMA
Phi Kappa Psi.	
Instructor Colo. School of Mines; Asst. Mgr. C. S.	
M. Test Plant, Golden, Colo.	
DOBSON, DELOS I. '16	BETA
33 Colorado Ave., Detroit, Mich.	
DODD, LESLIE H. '14	ZETA
Langdon, Kansas.	
DODGE, JR. DAVID C. '15	GAMMA
Beta Theta Pi.	
Golden, Colo.	
DOPP, JAMES LAWRENCE '15	ALPHA
Sigma Alpha Epsilon.	
1121 University Ave., S. E. Minneapolis, Minn.	
DORR, WILLIAM RIPLEY B. S. '14	ALPHA
Chi, Psi, Mu Phi Delta.	
Wilcox Motor Co. Minneapolis, Minn.	

- 
- |   |         |
|---|---------|
| DOUGLAS, WILLIAM C. E. M. '11   | GAMMA   |
| Sigma Alpha Epsilon.  |         |
| Anaconda Copper Mining Co., 401 Leonard Hotel,<br>Butte, Mont.              |         |
| DOUGHERTY, ELLSWORTH YOUNG Student  | EPSILON |
| Lambda Chi Alpha.   |         |
| 20 5th. Ave., San Rafael, Cal.  |         |
| DOUGLAS, JAMES MAINWARING Student   | EPSILON |
| Phi Sigma Kappa.  |         |
| San Jose, Cal.  |         |
| DOWNING, ROBERT LEE B. S. E. M. '06   | BETA    |
| Supt., Bennett Mine, Keewatin, Minn.  |         |
| DRAKE, MORRIS CLAIRE '15 Student  | BETA    |
| 316 College Ave., Houghton, Mich.   |         |
| DUNCAN, KENNETH J. E. M. '10  | ALPHA   |
| Tau Beta Pi.  |         |
| Representing R. B. Whiteside's Mining Interests,<br>Box 165, Hibbing, Minn. |         |
| DUNHAM, ROY OWEN Student '15  | ALPHA   |
| Lakeville, Minn.  |         |
| DUNN, JAMES L. Student McGill   | GAMMA   |
| Delta Kappa Epsilon.  |         |
| 66 McTavish St., Montreal, Quebec, Canada.                                  |         |
| DUGGLEBY, A. F. Student   | GAMMA   |
| Davenport, Iowa.  |         |
| DuTOIT, JR. GEROGE A. M. E. '10   | ALPHA   |
| Beta Theta Pi.  |         |
| Asst. Purchasing Agent, Mpls. Steel & Machinery<br>Company.                 |         |
| 4115 Dupont Ave., S. Minneapolis, Minn.                                     |         |
| DYER, CHARLES E. E. M. '10  | GAMMA   |
| Tau Beta Pi.  |         |
| Care Ray Const. Co., Ray Arizona.   |         |
| DRYENFORTH, DONALD E. M. '12  | GAMMA   |
| Sigma Alpha Epsilon.  |         |
| Supt., Akron Tunnel, White Pine, Colo.                                      |         |

- EARLING, ROY BROWN B. S. E. M. '08 BETA  
Tau Beta Pi.  
Supt., Arizona Copper Co. Ltd., Metcalf, Ariz.
- EAST, J. H. E. M. '10 GAMMA  
McAlester, Okla.
- EATON, ARTHUR B. S. '13 EPSILON  
Phi Kappa Sigma, Tau Beta Pi, Sigma Xi.  
Asst. Geol., Standard Oil Company, Shanghai,  
China.
- EDGERTON, RALPH E. '07 ALPHA  
Sigma Alpha Epsilon.  
431 S. Huron St., Sand Point, Idaho.
- EDWARDS, JOHN GARDNER B. S. E. M. '13 BETA  
Isle Royal Mining Co., 119 College Ave., Hough-  
ton, Mich.
- EDWARDS, HARRY RICE BETA  
Died April 27th. 1913, Silver City, New Mexico.
- EIDEMILLER, HOWARD N. '14 ALPHA  
Zeta Psi.  
Student U. of W., 635 State St., Madison, Wis.
- EISENHAUER, RANDOLPH CHURCHILL '13 EPSILON  
Pi Kappa Alpha.  
2646 Dwight Way, Berkeley, Cal.
- ELDER, ROBERT B. E. Met. '08 GAMMA  
Kappa Sigma, Tau Beta Pi.  
Chicksaw Mines, Chosen, Korea.
- ELFSTRUM, A. E. C. E. '11 ALPHA  
Standard Coal Co., Standardville, Utah.
- ELLIOTT, GORDON DOVER B. S. E. M. '12 BETA  
Chemist, Gibson Copper Co., Bellevue, Arizona.
- ELLIS, BRUCE BONTORN C. E. '08 ALPHA  
Sigma Chi.  
Supt., E. J. Longyear Co., Tucson, Arizona.
- ENGLISH, WALTER ATHELING B. S. & M. S. '10  
Theta Chi. EPSILON  
U. S. G. S., Washington, D. C.

ESSIG, BENJAMIN C. '15	GAMMA
Kappa Sigma.	
Owosso, Mich.	
EVANS, CARL WATSON Ex. '11	BETA
Ariz. Copper Co., Clifton, Arizona.	
EVERHEART, ERNEST KINSEY B. S. '08	BETA
Mineral El Salado, Rodeo, San Juan, Rep de	
Argentina, S. America	
FAIRCHILD, SAMUEL G. '14	ZETA
Sigma Alpha Epsilon.	
Sec. to Lieut. Gov. of Kan., Senate Chr., Topeka,	
Kansas.	
FARNAM, JULIAN P. M. E. '11	ALPHA
Psi Upsilon.	
913 11th. St., Sioux City, Iowa.	
FARNLACHER, WALTER GEORGE Student	EPSILON
1664 Fulton St., S. E. Berkeley, Cal.	
FARTHING, WILLIAM '16	ETA
Kappa Sigma.	
FEELEY, JR. JOHN CORNELIUS '14 Student	EPSILON
Sigma Alpha Epsilon, Tau Beta Pi.	
East Auburn, Cal.	
FELLMAN, CARL MARIUS E. M. '11	BETA
Engr., Castile Mining Co., Ramsey, Mich.	
FERRIS, ALBERT LARUE E. M. '11	BETA
Arizona Copper Co., Metcalf, Arizona.	
FICK, OTTO WILHELM Student '14	ETA
109 Warren Ave., Boston, Mass.	
FIELDS, HOWARD HAWTHORNE B. S. E. M. '13	ALPHA
Chi Psi.	
General Development Co., Salt Lake City, Utah.	
FISKE, CHARLES PARKER S. B. '14	ETA
Delta Tau Delta.	
Care Kidder, Peabody & Co., Boston, Mass.	
FLETCHER, RALPH LESLIE	ETA
Sigma Alpha Epsilon.	
103 Parade St., Providence, R. I.	

FLINN, ALFRED '13	GAMMA
Kappa Sigma.	
Care Nev. Mining & Milling Co., Power Co., Contact, Nev.	
FOARD, MERLIN WILEY '12	BETA
Algoma Steel Corp., Magpie Mine, Ont.	
FORBES, HENRY HOOKER '13 E. M.	GAMMA
Phi Delta Theta.	
12 High St., Westboro, Mass.	
FOX, MILO P. Ex. '10	ALPHA
Sigma Chi.	
Wash. Barracks D. C., Corps of Engineers, U S. Army.	
FOLLANSBEE F. S. Student	GAMMA
Phi Kappa Alpha.	
Fort Springs, West Virginia.	
FORTUNE, FRANK '16	DELTA
Jefferson, Ohio.	
FRASER, DONALD D. '14	BETA
8 Hamilton St., Johnstown, N. Y.	
FREEMAN, HARLEY L. '17	DELTA
1433 East. 86th. St., Cleveland, Ohio.	
FREEMAN, HOVEY THOMAS '16	ETA
Delta Kappa Epsilon.	
FREMERY, DONALD DE '15	ETA
Psi Upsilon.	
77 Fairmont Ave., Oakland, Cal.	
FRICK, F. F. E. M. '08	GAMMA
Peru, Indiana.	
Anaconda Smelting Co., Anaconda, Mont.	
FRISBIE, DONALD BALDWIN B. S. '11	DELTA
Toledo Coal Sales Co., 724 Spitzer Bldg., Toledo, O.	
FRITCH, GEORGE '11	GAMMA
Sigma Nu.	
539 Jefferson St., Milwaukee, Wis.	
Sec. & Treas., The Efaness Mfg. Co., Milwaukee, Wis.	

FUGMAN, VICTOR CHARLES B. S. '10 Zeta Psi, Tau Beta Pi, Sigma Xi. Ambler Heights, Cleveland, Ohio. Nat'l. Lamp Ass'n.	DELTA
FURBER, PIERCE POWERS C. E. '08 Sigma Alpha Epsilon. 4517 Dupont Ave., S., Minneapolis, Minn. Chgo. Rep., C. A. P. Turner, 8 S. Dearborn, Chicago, Ill.	ALPHA
GANZENMUELLER, CARL H. '17 1266 East 113th. St., Cleveland, Ohio.	DELTA
GARNETT, THOMAS HERNDON E. M. '11 Sigma Nu. 1315 Court St., Pueblo, Colo. Empire Zinc Co., Arden, Nev.	GAMMA
GAUTHIES, C. B. Student Sigma Alpha Epsilon. Detroit, Mich.	GAMMA
GEIB, GEORGE A. Ex. '16 Sigma Alpha Epsilon. U. of Ill., Champaign, Ill.	ALPHA
GEIGER, CHARLES T. Sigma Alpha Epsilon. 730 S. Main St., Ottawa, Kan.	ZETA
GEIS, WILFRED H. '15 Phi Sigma Kappa. 147 Merrill Ave., Willows, Cal.	EPSILON
GESTER, STEPHEN HOWELL B. S. '13 Care Standard Oil Co., Lima, Peru, Duncan Fox and Co.	EPSILON
GESTER, GEORGE CLARK B. S. '09 Sigma Xi, Mim Kaph Mim. Care Standard Oil Co., Lima, Peru, S. A.	EPSILON
GIBBS, FRED Student Tau Beta Pi. Houghton, Mich. Care Cascade Mine, Palmer, Mich.	BETA

GIBSON, ALGERNON TUTTLE '13	ETA
Alpha Delta Phi, Theta Nu Epsilon.	
26 Myrtle St., Jamaica Pl., Mass.	
GILCHRIST, ARCH '13	BETA
Delta Tau Delta, Tau Beta Pi.	
1206 E. River St., Davenport, Ia.	
Theta Tau House, Houghton, Mich.	
GILTINAU, DAVID MURRAY '15	ALPHA
Delta Upsilon.	
217 Harvard St., Minneapolis, Minn.	
GLASGOW, C. W. E. M. '10	GAMMA
Phi Delta Theta.	
4371 Washington Ave., St. Louis, Mo.	
GOETZENBERGER, RALPH LEON '14	ALPHA
Psi Upsilon.	
117 Front St., Schenectady, N. Y.	
GOODWIN, GUY LEONARD B. S. '10	EPSILON
Phi Kappa Psi.	
Pinal Dome Oil Co., Santa Maria, Cal.	
GOFF, JAMES COLLORD '13	ETA
Delta Upsilon.	
Student M. I. T., 1069 Beacon St., Brookline, Mass.	
Grafton, Pa.	
GOULD, EDGAR HAROLD B. S., E. M. '11	BETA
Phi Mu Alpha.	
Battle Creek, Mich.	
Min. Engr., Osceola Consol. Mng. Co., Calumet, Mich.	
GRAHAM, ERNEST R. B. S., E. M. '07	BETA
Tau Beta Pi.	
Croswell, Mich.	
Supt., Mogul Mng. Co., Terry, S. Dak.	
GRANFIELD, THOS. HENRY B. A. '14	ALPHA
Phi Sigma Kappa.	
Exp. Lab. Gen. Electric Co., Pittsfield, Mass.	

GRAYBEAL, EDWARD V. E. M. '14	GAMMA
Sigma Nu.	
Anaconda Copper Co., Anaconda, Mont.	
GREENSLADE, RUSSELL MALLARD Ex. '16	DELTA
Industrial McH. Co., 2153 Fairmont Road,	
Cleveland, Ohio.	
GRIFFEN, ROY J. Student	BETA
Flint, Mich.	
GRYGLA, EUGENE E. '08	ALPHA
Chi Psi.	
Santa Fe, Cal.	
No. 142, Manhattan, Nevada.	
HADSELL, IRVING W.	THETA
99 Claremont Ave., N. Y., N. Y.	
HAEBERLE, CARL FREDRICK B. S. '11	DELTA
Zeta Psi.	
1625 E. 49th. St., Cleveland, Ohio.	
Chem. Grasselli Chem. Co., Cleveland, Ohio.	
HAGLIN, JR., CHARLES F. B. S. '14	ALPHA
Psi Upsilon.	
Haglin-Stahr Co., Hotel Plaza, Minneapolis, Minn.	
HALL, DURAND A. Student	BETA
Zeta Psi (Williams College).	
Deerwood, Minn.	
304 Florence St., Houghton, Mich.	
HANKS, ISAAC BAKER '07	ALPHA
Delta Tau Delta.	
Care Macleod Flour Mills, Macleod, Alberta, Can.	
HANSEN, GEORGE PETER '13	DELTA
8815 Walker Ave., Cleveland, Ohio.	
Central Furn., Am. Steel & Wire Co., Cleveland, O.	
HARPER, ROBERT '15	ETA
Sigma Alpha Epsilon	
HARRIS, ALFRED '16	ZETA
Phi Delta Theta.	
Emporia, Kansas.	

HARRIS, WILLIAM JAMES '13	BETA
1212 Holland Ave., Saginaw, Mich.	
Theta Tau House, Houghton, Mich.	
HARROD, W. A. Student	GAMMA
Sigma Alpha Epsilon.	
Fort Wayne, Indiana.	
HARTLEY, WILL TOMLINS B. S. '11	DELTA
1243 Cook Ave., Lakewood, Ohio.	
Chem. Atlas Crucible Steel Co., Dunkirk, N. Y.	
HARTMAN, LEON R. '14	ALPHA
Zeta Psi.	
Rank & Goodell, 801 Pioneer Bldg., St. Paul, Minn.	
HARVEY, JOHN VICTOR E. M. '11	GAMMA
Sigma Alpha Epsilon.	
1201 18th. St., Sioux City, Iowa.	
Mng. Engr., Peregrina M. & M. Co., Apartado No. 25, Guauajuato, Mexico.	
HASSE, ALBERT CHARLES B. S. '10 (Mng.)	DELTA
3352 W. 25th. St., Cleveland, Ohio.	
Student, Cleveland Law School.	
HASSELBRING, ALBRECHT E. M. '06	BETA
Flint, Mich.	
Gen. Supt., Lake Superior Corp., Magpie Mine.	
Ont. Can.	
HAUG, EDWARD JOSEPH '09	BETA
Sigma Phi.	
Houghton, Mich.	
Shannon Copper Co., Metcalf, Ariz. Care Tonopah Extension Mng. Co., Tonopah, Nevada.	
HAUSER, KENNETH DUNCAN C. E. '11	ALPHA
Delta Tau Delta.	
827 Mound Ave., St. Paul, Minn.	
Engr., Hauser & Foley, Ry. Contrs.	
HAUSER, R. V. B. S. '10	ALPHA
Delta Tau Delta.	
827 Mound Ave., St. Paul, Minn.	
Engr., Hauser & Foley, Ry. Contrs.	

- HAYNES, JACK ELLIS B. A. '08 ALPHA  
Beta Theta Pi.  
1787 Hague Ave., St. Paul, Minn.  
Supt., Haynes Studios, St. Paul and Yellowstone  
Park.
- HAYNES, STANLEY HEWITT Student ALPHA  
Chi Psi.  
703 River Rd., E. Minneapolis, Minn.
- HAZZARD, ANDREW McDONALD Student EPSILON  
Whittier, Cal.
- HEENA, CARL RAYMOND '17 DELTA  
721 Ridge Road, Bowling Green, O.
- HEGEMAN, ALANSON KERR '14 EPSILON  
Chi Psi, Tau Beta Pi.  
Nevada Consolidated Copper Co., Box 582, Ely,  
Nevada.
- HEINE, BERNHARDT E. Student BETA  
126 Market St., Mt. Clemens, Mich.  
Theta Tau House, Houghton, Mich.
- HELLBERG, EDWARD ADOLPH B. S., E. M. '10 BETA  
Asst. Mng. Engr., Oliver I. M. Co., Norway, Mich.
- HELMICK, DON S. '16 ALPHA  
Zeta Psi.  
1014 13th. Ave. S. E., Minneapolis, Minn.
- HENDRICKS, JOHN ABRAM '14 EPSILON  
Phi Sigma Kappa.  
Empire Mines Co., Grass Valley, Cal.
- HERMANN, CHARLES FREDRICK B. S. M. '06 BETA  
Died Oct. 31, 1909, at Hibbing, Minn.
- HERON, CHARLES M. B. S. '11 EPSILON  
Phi Kappa Sigma.  
2426 Virginia St., Berkeley, Cal.  
El Tigre Mng. Co., Ysabel, Sonora, Mex.
- HERRES JR., OTTO E. M. '11 GAMMA  
1728 Race St., Denver, Colo.  
Asst. Engr., Utah Fuel Co., Castle Gate, Utah.

HESTON, ROBERT PERRY	Student	DELTA
2224 Rosewood Ave., Toledo, O.		
1952 E. 116th St., Cleveland, O.		
Bock Bearing Co., Toledo, O.		
HESSAM, ERNEST ALBION		EPSILON
Honorary.		
Prof. University of Cal. 2308 La Conte Ave.,		
Berkeley, Cal.		
HEWETT, MAURICE W.	'14	ALPHA
Phi Sigma Kappa, Tau Beta Pi.		
Secruity Bridge Co., Malta, Montana, Box 746.		
HICKS, BERT REED	B. S., E. M. '08	BETA
Died March 25, 1912, China.		
HICKS, FRANK V.	'15	BETA
Tau Beta Pi.		
Edwardsburg, Mich.		
HICKS, LUTHER REUBEN	'13	BETA
Died May 4, 1912 at Oshkosh, Wis.		
HIGH, RALPH BROOKS	B. S. '11	EPSILON
Phi Kappa Psi.		
Care Llewellyn Iron Works, Los Angeles, Cal.		
HILL, CHARLES RANSOM	Ex. Gamma	ETA
Delta Psi, Tau Beta Pi.		
Care of Livingston Platt, 2 Rector St., New York,		
N. Y. Care Door Cyanide Mach. Co., Denver, Colo.		
HILL, A. STANLEY	E. M. '11	ALPHA
Psi Upsilon.		
3324 Colfax Ave. So., Minneapolis, Minn.		
Box 37, Gem, Idaho.		
HILSDALE, PAUL	'12	GAMMA
Phi Gamma Delta, Tau Beta Pi.		
Care Wellington Mines Co., Breckenridge, Colo.		
HINCKLEY, PAUL EUGENE	Student	BETA
312 W. Lovell St., Kalamazoo, Mich.		
Care Eveleth Mines Co., Eveleth, Minn.		

- HINCKLEY, THOMAS LESLEY B. S. '06 M. I. T.  
Hon. ALPHA  
17 Gramercy Pk., New York, N. Y.  
Director of Research, Westchester Co., Research  
Bureau, 15 Court St., White Plains, N. Y.
- HOAG, CLIFFORD B. S., E. M. '13 BETA  
St. Johns, Mich.  
Shannon Cop. Co., Metcalf, Ariz.
- HOENIGMAN, FRANK JOSEPH Student EPSILON  
Lambda Chi Alpha.  
New York City, N. Y.
- HOFFMAN, RALPH N. ZETA  
Parsons, Kas.  
1333 Kentucky, Lawrence, Kan.  
Chiquiacamata, Chile, via Antofogasta.
- HOLMAN, WM. F. B. S., M. A. Ph.D. Hon. ALPHA  
Phi Gamma Delta.  
Professor U. of M., Minneapolis, Minn.
- HOLBROOK, FREDERICK '16 ETA  
HOOD, KARL KEDZIE B. S. E. M. '12 BETA  
Braddock & Waverly Sts., Pittsburg, Pa.  
Chief Engr., Doe Run Lead Co., Rivermines, Mo.
- HOPKINS, JR., HERMAN HALSEY B. S., E. M. '08  
BETA  
Sec., H. H. Hopkins Co., 164 N. Dearborn St.,  
Chicago, Ill.
- HOPKINS, H. H. BETA  
800 Church St., Flint, Mich.
- HOSTETLER, CURTIS B. E. M. '13 ZETA  
Alpha Tau Omega.  
Box 211, Morenci, Arizona.
- HOUGHTALING, ELTING WADE ALPHA  
Phi Gamma Delta.  
316 Albion Ave., Fairmont, Minn.
- HOULE, ALBERT JOSEPH Professor, Honorary BETA  
Tau Beta Pi  
Prof. Michigan College of Mines

HOUSHOLDER, E. R. '17	Student	DELTA
226 No. Enterprise St., Bowling Green, O.		
HOUSTON, FRED KENNEDY	E. M. '05	BETA
160 E. 3rd St., Beaver, Pa.		
Box 865, Helena, Mont.		
HUDSON, FRANK SAMUEL	B. S. '11	EPSILON
Phi Gamma Delta, Sigma Xi, Theta Nu Epsilon.		
2735 Derby St., Berkeley, Cal.		
Geol. So. Pac. Co., 712 Flood Bldg.,		
San Francisco, Cal.		
HUDSON, W. E.		GAMMA
Golden, Colo.		
HUFF, THOS.	Student	ETA
HUGHES, WILLIAM LEWIS	Student	BETA
2207 E. 89th St., Cleveland, O.		
HULT, GEO. A. '15		ALPHA
Zeta Psi.		
HUNT, JAMES LEE	'16	ZETA
28 N. Boeke, Kansas City, Kan.		
HURLBUTT, FREDERICK LEWIS	Student	ETA
Kappa Alpha.		
548 Potomac Ave., Buffalo, N. Y.		
16 Westland Ave., Boston, Mass.		
HURLEY, JOHN J.	E. M. '11	ALPHA
Pine City, Minn.		
366 Nelson Ave., St. Paul, Minn.		
JAQUES, ROBERT C. E.	'09, LL. B. '12	ALPHA
Sigma Chi, Phi Delta Phi.		
Lawyer, 411 Lonsdale Bldg., Duluth, Minn.		
JEROME, FRANK JAY	A. B. S. B. '14	ETA
New York Central Ry. Co.		
123 13th St., Flat B., Toledo, O.		
JEVNE, GEORGE W.	C. E. '10	ALPHA
Phi Sigma Kappa.		
2441 Elliot Ave. S., Minneapolis, Minn.		
Dist. Engr. C. A. P. Turner, Union Nat'l Bank		
Bldg., Houston, Tex.		

JOHNSON, PAUL ARTHUR	B. S. E. '11	ALPHA
Sigma Alpha Epsilon.		
Johnson Construction Co.		
624 Plymouth Bldg., Minneapolis, Minn.		
JOHNSON, PHILIP LAWRENCE	Student	ALPHA
Sigma Alpha Epsilon.		
2911 Lyndale Ave. N., Minneapolis, Minn.		
JOHNSTON, RALPH	'15 Student	ALPHA
Phi Gamma Delta.		
JOHNSTON, FRED E.	B. S. '12	ZETA
Madison, Kan.		
1001 N. 6th St., Ft. Smith, Ark.		
JONES ROBERT	'15	ALPHA
JONES, E. F.	E. M. '10	GAMMA
Las Esperanzas, Coahuila, Mexico.		
Engr., Cia C. A. yA., Zampacitos, Mexico.		
JONES, WATKINS W.	E. E. '11	ALPHA
Asst. Supt., Consol. Fuel Co., Hiawatha, Utah.		
KAISER, HOWARD W.	'17	DELTA
100 Glenwood Ave., Akron, O.		
KASPER, WALTER F.	M. E. '11	ALPHA
Phi Gamma Delta.		
Box 11, Fairmont, Minn.		
Fairmont Machine Co.		
KENDALL, ARTHUR	'15	BETA
Hancock, Mich.		
KENNEDY, JOHN J.	E. M. '08	ALPHA
Psi Upsilon.		
436 Iglehart Ave., St. Paul, Minn.		
Tuscon Mines Devel. Co., Box 538 Tuscon, Ariz.		
KERR, JOHN BOZMAN	'14	EPSILON
2428 Hillside Ave., Berkeley, Cal.		
KESNER, HENRY JAMES	Col. '05, B. A., B. S., C. E.,	Hon. ALPHA
Beta Theta Pi, Phi Beta Kappa, Sigma Xi, Tau Beta Pi.		
Asst. Prof., Civ. Engr., U. of Cal., Berkeley, Cal.		

- KEW, WILLIAM S. W. '12 EPSILON  
Alpha Tau Omega, Beta Kappa Alpha, Sigma Xi.  
6th and Spruce Sts., San Diego, Cal.
- KILBOURN, BURWELL NEWTON GAMMA  
Sigma Nu, Theta Nu Epsilon.  
1124 Court St., Pueblo, Colo.  
American Smelting & Refining Co., Murray, Utah.
- KILGOUR, MARTIN HAMILTON A. C. G. I. (London) E. M. '08 GAMMA  
Can. Bank of Commerce, 16 Exchg. Pl., N. Y., N. Y.  
Consulting Engineer.
- KING, ROWLAND B. '16 BETA  
Care of C. M. Fassett Co.  
209 Wall St., Spokane, Wash.
- KINGSLEY, NEIL S. E. M. '11 ALPHA  
Delta Tau Delta.  
Minneapolis Civic & Commerce Assn.  
1009 University Ave., S. E. Minneapolis.
- KINGSTON, CARL JOHN '06 BETA  
Central Mine, Mich.  
Cerro de Pasco Mng. Co., Cerro de Pasco, Peru,  
S. A.
- KINNEAR, LAWRENCE WILSON Student ZETA  
Beta Theta Pi.  
137 Riverside Drive, N. Y., N. Y.  
1537 Tenn. St., Lawrence, Kan.
- KIRCHMAN, ROBERT INGERSOLL E. M. '08 GAMMA  
Kappa Sigma, Tau Beta Pi.  
Kappa Sigma House, Golden, Colo.  
Box 55, Mongollon, N. Mex.
- KIRKPATRICK, MARSENA RICHARD E. M. '07 BETA  
Bellingham, Wash.  
713 8th Ave., Seattle, Wash.
- KIRWAN, THOMAS DANIEL Student EPSILON  
Alpha Tau Omega  
Coalinga, Cal.

KISSOCK, E. M. '12	GAMMA
Sigma Alpha Epsilon.	
Box R. Tuscon, Arizona.	
KITTREDGE, GEO. D. Student	ETA
KLEPETKO, ERNEST B. S. E. M. '11	BETA
Alpha Delta Phi.	
Anaconda Copper Mining Co., Great Falls, Mont.	
KLINE, ALLEN HAROLD Student	DELTA
R. F. D. No. 3, Youngstown, O.	
KNOWLTON, HERBERT H. C. E. '08	ALPHA
Sigma Xi.	
Box 327, Fowler, Colo.	
KODET, GUSTAF, '17	DELTA
1447 East 93rd St., Cleveland, O.	
KLINE, ZENAS CLYDE B. S. '10	DELTA
Sigma Xi, Tau Beta Pi.	
R. I. Glass Co., Central Falls, R. I.	
KOEHLER, CARL FREDERICK B. S. '09	DELTA
Theta Nu Epsilon.	
Willys Overland Co., Box 305, Elyria, O.	
KOENIG, GEORGE AUGUSTUS M. E., A. M., Ph. D., E. M.	Hon. BETA
Died Jan. 14, 1913, at Philadelphia, Pa.	
KOONTZ, KINTER KENNETH B. S., E. M. '08	BETA
542 Central Ave., Johnstown, Pa.	
Capitol Bldg., Phoenix, Arizona.	
KOPPER, EDWARD JR. M. E. '14	ALPHA
Psi Upsilon.	
Grey Tractor Co., Minneapolis.	
Psi Upsilon House, Minneapolis	
KRATZ, ARTHUR MURRAY B. S. '05	BETA
23 Charles St., Calumet, Mich.	
Box 149, Johannesburg, South Africa.	
KRILL, LEONARD H. '17 Student	DELTA
7917 Superior Ave., Cleveland, O.	

KRUGER, HERMAN A.	E. M. '09	GAMMA
Beta Theta Pi, Tau Beta Pi.		
Box 1336, Denver, Colo.		
611 Pac. Elect. Bldg., Los Angeles, Cal.		
KRUG, FRANK	'17	ETA
Delta Tau Delta.		
KRISTY, GEORGE A.	E. E. '09	ALPHA
410 3rd Ave. N., Minneapolis, Minn.		
Con. Agt. Gen. Elect. Co., Minneapolis, Minn.		
KRUSE, HELMER VICTOR	C. E. '14	ALPHA
Tau Beta Pi.		
University of Minn. Ex. Lab.		
KUMKE, CHARLES AUGUST	E. M. '06	BETA
35 Humboldt Ave., Detroit, Mich.		
United Verde Copper Co., Jerome, Ariz.		
KUZELL, CHARLES RAPHAEL	B. S. '10	DELTA
Tau Beta Pi, Pick & Shovel.		
Investigator, Anaconda Copper Mining Co., B. & M. Reduction Dept., Great Falls, Mont.		
LADD, GREELEY	'13	ALPHA
Phi Gamma Delta.		
1129 University Ave., S. E., Minneapolis, Minn.		
LANNON, JAMES A.	'11	GAMMA
Sigma Alpha Epsilon, Tau Beta Pi, Kappa Beta Phi.		
1024 N. Main St., Pueblo, Colo.		
Midas Gold Mng. Co., Knob, Shasta Co., Cal.		
LARKIN, ARTHUR EDWARD	'08	ALPHA
Beta Theta Pi.		
59 Williams Ave. S. E., Minneapolis, Minn.		
Mgr. and Gen. Supt. Republic Creosoting Co., Minneapolis, Minn.		
LAVAN, THOMAS JOSEPH		DELTA
2038 E. 65th St., Cleveland, O.		
LAWRASON, LEVERING	Student	ETA
Sigma Alpha Epsilon.		

LAWSON, ANDREW WERNER	EPSILON
Phi Kappa Sigma, Mim Kaph Mim.	
1515 La Loma Ave., Berkeley, Cal.	
LEACH, EDWARD W. C. E. '10	ALPHA
Winona, Minn.	
Butler Bros., Contrs., Buhl, Minn.	
LEEB, HENRY L. Student	ETA
LEEK, LAWRENCE VANDER '15	EPSILON
San Juan, Capistrano, Cal.	
LEE, LELAND V.	THETA
Delta Tau Delta.	
Monterey, Mex.	
LEONARD, THOMAS K. '15	ALPHA
LESH, H. B. E. M. '10	GAMMA
Sigma Nu.	
909 West End Ave., New York, N. Y.	
Cerro de Pasco Mng. Co., Cerro de Pasco, Peru,	
S. A.	
LESLIE, FREELAND HUSTON A. B. '12, Harvard '14	ETA
44 Randolph Ave., Milton, Mass.	
LEWIS, JOHN WHITNEY E. M. '12	ALPHA
Psi Upsilon.	
Care Gen. Andrews, Barbara Asphalt Co.,	
Philadelphia, Pa.	
Field Geol., Carribbion Petroleum Co., Venezuela.	
Care Am. Savings Bank, Los Angeles, Cal.	
LEWIS, W. MURRAY E. M., E. Met. '09 Ex. Alpha	GAMMA
624 Portland Ave., St. Paul, Minn.	
Stone & Webster, Bristol, Conn.	
LIEBING, WILLIAM '17	DELTA
1353 East 86th St., Cleveland, O.	
LITCHFIELD, RUFUS EARL Student	GAMMA
Sigma Alpha Epsilon.	
Arlington St., Fitchburg, Mass.	

LITTLE, THOMAS '16	ETA
Alpha Delta Phi, Phi Beta Kappa	
LOEFFLER, HENRY STANLEY '14	ALPHA
1014 13th Ave. S. E., Minneapolis, Minn.	
LONGAN, WALTER BOWLES B. S., E. M. '08	BETA
924 E. 29th St., Kansas City, Mo.	
Box 955, Nowata, Okla.	
LORAIN, S. H. Student	BETA
Philipsburg, Pa.	
LORD, CHARLES ROGERS '16	ETA
Delta Kappa Epsilon, Theta Nu Epsilon.	
Claremont St., Newton, Mass.	
LOUDERBACK, GEORGE DAVIS A. B. Phd. Cal. '96	EPSILON
Phi Kappa Sigma, Phi Beta Kappa, SigmaXi. Tau	
Beta Pi.	
Chief Geologist, Standard Oil Co., Shanghai, China	
LOVELAND, RALPH ANDREWS	BETA
110 8th St., Calumet, Mich.	
LOWELL, JAMES B. E. M., E. Met. '08	GAMMA
Phi Gamma Delta, Tau Beta Pi.	
24 Brattle St., Worcester, Mass.	
Supt., Geo. A. Fuller Co., 131 State St., Boston, Mass.	
LOWENGARD, RICHARD '17	ETA
LUCE, EARL P. '10	BETA
Roger-Holmes Contracting Co.	
4750 Art St., New Orleans, La.	
LUKE, RUSSELL P. Student	GAMMA
Sigma Nu.	
Kingston, Pa.	
Sigma Nu House, Golden, Colo.	
LUND, N. J. B. S. '11	EPSILON
3016 Hillegass Ave., Berkeley, Cal.	
Mngr., Central Creameries, Cambria, S. L. O. Co., Cal.	

LUTZ, RICHARD EUGENE	Student	ALPHA
Chi Psi.		
Mantorville, Minn.		
1515 University Ave. S. E., Minneapolis, Minn.		
MACINNES, GEORGE RAYMOND	'15	DELTA
6206 Wakefield Ave., Cleveland, O.		
MACKILLICAN, JAMES ANGUS	B. S. '06	BETA
330 Oak St., Escanaba, Mich.		
Asst. Supt. of Inspect., Meriden Iron Co., Hibbing, Minn.		
MAHONEY, Wm. L.	'14	ALPHA
508 4th. St. N. E., Minneapolis, Minn.		
MAIN, WALTER COURTNEY	'17	DELTA
Sterling & Welsh Company		
1605 East 82nd St., Cleveland, Ohio.		
MALM, ROYAL DINSMORE	B. S., E. M. '12	DELTA
Cleveland Illuminating Co.		
1448 East 115th St., Cleveland, Ohio.		
MANGLESDOFF, ALBERT HENRY	E. M. '12	ZETA
Alpha Tau Omega.		
Cashier Farmers State Bank, Potter, Kan.		
MARSHALL, EMORY M.	E. M. '11, M. S. '12	GAMMA
Phi Gamma Delta.		
1210 8th St., Des Moines, Ia.		
Globe Ariz.		
MARSHALL, GEORGE BOWEN	B. S., E. M. '07	BETA
442 E. 136th St., New York, N. Y.		
Supt., Mina La Union, Miramar, Costa Rica, C. A.		
MATCHETT, HENRY J.	Ex. '14	ALPHA
Mutual Benefit Life Ins. Co.		
1416 Capitol Ave., St. Paul, Minn.		
MATHESON, K. H.	E. M. '11	GAMMA
Kappa Sigma.		
Hugo, Colo.		
Sabana Grande, Honduras.		

MAY, JR., A. J. '12	GAMMA
Golden, Colo.	
Harley, N. Mexico.	
MCCARTHY, CHARLES F.	THETA
Beta Theta Pi.	
Denver, Colo.	
MCCUNE, MALCOLM '15	ZETA
Leavenworth, Kansas.	
MCENARY, DALE ROBERT Student Ex. Alpha	ETA
Alpha Delta Phi.	
2324 Pleasant Ave. S., Minneapolis, Minn.	
32 Westland, Ave., Boston, Mass.	
MCGINNIS, WILLIAM H. C. E. '10	ALPHA
Delta Tau Delta.	
245 Buchanan St., San Francisco, Cal.	
Tucker & O'Brien, 112 Market St. (Same.)	
MCGILVRA, DONALD B. '18	ALPHA
Beta Theta Pi.	
MCGUIRE, PHILIP J. Student	GAMMA
Kappa Sigma.	
555 Humboldt St., Denver, Colo.	
Kappa Sigma House, Golden, Colo.	
McHUGH, PHILLIP M. E. M. '11	GAMMA
Sigma Alpha Epsilon.	
Min. Engr. Dorr Cyanide Mach. Co., Denver, Colo.	
McKNIGHT, HUGH S. '15	GAMMA
Kappa Alpha.	
1822 Grand Ave., Dallas, Tex.	
McLACHLAN, BENJAMIN HARRISON B. S., E. M. '11	BETA
24 E. 114th Pl., Chicago, Ill.	
The Peoples Natural Gas Co., Altoona, Pa.	
McLAUGHLIN, ADELBERT ROBERT B. S. '11	DELTA
10813 Marlborough, Cleveland, O.	
Inspector Standard Oil Co., Wks. No. 1, Cleveland, Ohio.	

- McLAUGHLIN, DONALD HAMILTON '14 EPSILON  
Kappa Sigma, Tau Beta Pi, Phi Beta Kappa.  
Harvard U., 40 Canan Hall, Cambridge, Mass.
- McLEAN, J. B. BETA  
Barre, Vt.
- McMILLAN, WM. DOUGLAS B. S. '13 EPSILON  
McIntyre Porcupine Mines.  
Box 12, Shoemaker, Ont. Can.
- McNABB, WILLIAM THEODORE B. S., E. M. '11 BETA  
Tau Beta Pi.  
316 Sand Beach Ave., Bad Axe, Mich.  
Engr., Jno. A. Kruse Engr. Co., New Orleans, La.
- McNAIR, BERTRAND M. '09 BETA  
Brimley, Mich.  
Shift Boss, Lake Superior Power Co.
- McPHERRIN, WM. LANE '14 ETA  
Beta Theta Pi.  
1919 E. 11th St., Kansas City, Mo.
- McRAE, RANDOLPH E. M. '07 ALPHA  
Alpha Delta Phi.  
Davidson & McRae, Toronto, Canada.
- METCALF, JOHN CLAFLIN '13 BETA  
9 Woodstock Ave., Allston, Mass.  
Chief. Engr., Veteran Mine, Kimberly, Nev.
- MEUCHE, ALFRED HENRY B. S. E. M. '05 BETA  
Tau Beta Pi.  
135 Agate St., Houghton, Mich.  
Mead & Meuche, Engrs., Houghton, Mich.
- MILLER, JAMES S. E. M. '14 THETA  
Phi Delta Theta.  
Care R. V. Norris Consulting Mining Engineer,  
Wilkesbarre, Penn.
- MILLER, ARTHUR '16 ETA  
Alpha Delta Phi.
- MILLS, CARL E. '15 BETA  
Tau Beta Pi.  
149 Ruby St., Houghton, Mich.

MILLS, HAROLD F.	BETA
Tau Beta Pi.	
Loretto Mining Co., Loretto, Mich.	
MILNE, RUFUS H.	ALPHA
Phi Sigma Kappa.	
City Engineers Office, St. Paul.	
1139 Raymond Ave., St. Paul, Minn.	
MINER, ROBERT INNES	Columbia B. S., Ex. '10
Sigma Chi.	ALPHA
50 Kemble St., Utica. N. Y.	
Instructor Mech. Draw., Utica Free Acad., Utica, N. Y.	
MOFFETT, JOSEPH '14	BETA
1527 Minerva St., St. Louis, Mo.	
MOODY, CLARENCE LEMUEL	Student
2240 W. 14th St., Los Angeles, Cal.	EPSILON
MOODY,, GRAHAM BLAIR	EPSILON
Phi Beta Kappa, Sigma Xi, Beta Kappa Alpha.	
Phi Kappa Alpha, Mim Kaph Mim.	
Berkeley High School, 1829 Berryman St., Berkeley California.	
MOODY, WILBUR LADDE	B. S. '11
Tau Beta Pi, Sigma Xi, Mim Kaph Mim.	EPSILON
2618 Etna St., Berkeley, Cal.	
Geol., So. Pac. Co., 781 Flood Bldg., San Francisco, Cal.	
MOREE, KINSEL EARL	DELTA
Wallace Tractor Co., 1153 E. 105th St., Cleveland, Ohio.	
MORGAN, GEORGE HERBERT	B. S. E. M. '08
1010 Bryson St., Youngstown, O.	BETA
F. H. Probert, Central Bldg., Los Angeles, Cal.	
MORRISON, GEORGE ADELBERT	B. S., E. M. '04
2111 Morgan Ave., Morgan Park, Ill.	BETA
Republic Mng. & Metal Co., Ap. 863, Mexico City, Mex.	

MORRISON, A. S. Student	ETA
131 Morraine St., Brockton, Mass.	
Phi Gamma Delta.	
MORSE, ROY ROBERT B. S. '13	EPSILON
Sigma Xi.	
Asst. Geologist Standard Oil Co., Shanghai, China.	
MOSES, JOHN EDWARD	DELTA
9330 Gorman Ave., Cleveland, O.	
MOWERY, CLARENCE W. C. E. '08	ALPHA
1124 21st Ave., N. Minneapolis, Minn.	
Res. Engr. N. P. Ry.	
MURPHY, GEORGE R. '14	ZETA
Beta Theta Pi.	
Frisco Rd., Springfield, Mo.	
MURPHY, NORBERT DANIEL Ex. '12	BETA
318 6th St., Calumet, Mich.	
Algamated Co.	
15 Hennessy Annex, Butte, Mont.	
MUTHER, W. P. Student	ETA
Sigma Alpha Epsilon.	
91 Arlington St., Newton, Mass.	
MYERS, JOHN F. E. M. '13	GAMMA
Kappa Sigma.	
Butte & S. Cop. Co. Ltd., Butte, Mont.	
NEER, PAUL '09	GAMMA
Golden, Colo.	
San Juanita, Honduras.	
NEWCOMER, EARL T. '15	ZETA
Sigma Nu.	
2420 Perry Ave., Kansas City, Mo.	
NEWELL, FENN BAILEY '13	BETA
Trust Concrete Steel Co.,	
111 Loretta Place, San Antonio, Texas.	
NEWKIRK, DANIEL LEIGHTON E. M. '11	BETA
Tau Beta Pi.	
123 Maybury Grand Ave., Detroit, Mich.	
c-o Smith, Hinchman & Grylls.	

---

NICOLSON, CLYDE WALLACE	A. B. '13	BETA
1336 Fisher Ave., Detroit, Mich.		
NOLAN, PHILIP EDWARD	E. M. '13	GAMMA
Sigma Nu.		
c-o U.S. Reclamation Service, Meadow Creek, Wash.		
NUTTING, FLOYD LESTER	'15	ZETA
Russell, Kansas.		
O'BRIEN, JOHN CHARLES	E. M. '12	ALPHA
255 W. George St., St. Paul, Minn.		
Asst. Engr. A. C. M. Co., A. C. M. Co., Southern Cross, Montana.		
O'DONNELL, OTTOMAR	'15	ETA
1527 Race St., Denver, Colo.		
OLSON, WALTER SAMUEL	E. M. '12	ALPHA
306 Williams St., St. Paul, Minn.		
Leaser: Concentration Plant, Mariposa, Cal.		
ORYNSKI, JOHN B.	'14	EPSILON
2222 Atherton St., Berkeley, Cal.		
ORYNSKI, LEONARD WOJOMIR	'14	EPSILON
Mill Supt., Care Skidoo Mines Co., Skidoo, Cal.		
OSBORN, ERNEST LESLIE	Yale '12 Ph. B	ETA
Phi Gamma Delta, Sigma Xi.		
Denver, North Co., Missouri.		
OTIS, BURDETT A.	E. M. '11	EPSILON
Hotel Reichshof, Munchen, Bayern, University Ludwig-Maximilian.		
San Jacinto, Cal.		
PACK, ROBERT W.	B. S.	EPSILON
U. S. Geological Survey,		
1525 Spruce St., Berkeley, Cal.		
PACKARD, EARL LEROY	A. B. '11, M. A. '12	EPSILON
Theta Chi, Sigma Xi, BKA.		
1522 Grove St., Berkeley, Cal.		
PAINTER, CARL ELLIOTT	Student	ZETA
Kappa Sigma.		
Rapid City, S. Dak.		
926 Miss. St., Lawrence, Kansas.		

PAINTER, CHARLES J. '15	ZETA
Sigma Nu.	
Barclay, Kansas.	
PALMER, PORTEOUS BRODERICK '10	ALPHA
Beta Theta Pi.	
Foley Bros. Welch & Stewart, R. R. Contrs.	
PARKER, JAMES Student	ZETA
Phi Gamma Delta.	
Tulsa, Oklahoma.	
745 La. St., Lawrence, Kansas.	
Box 324, Cushing, Okla. Care Carter Oil Co.	
PARKER, ROSS I. B. S. '12	ZETA
Beta Theta Pi.	
10 Washington Ave., Schenectady, N. Y.	
Test Dept., Gen. Elect. Co.	
PARKHURST, JR., FREDERICK S. B. S. E. M. '04	BETA
522 Cedar Ave., Niagara Falls, N. Y.	
City Engr., Convention Hall, (Same.)	
PATTERSON, GEO. S.	THETA
Delta Tau Delta, Tau Beta Pi.	
Denver, Colo.	
PEACOCK, C. D. B. S., E. M. '08	BETA
731 E. 50th St., Chicago, Ill.	
Brainerd, Minn.	
PEARCE, JAMES WILLIAM Student	GAMMA
Beta Theta Pi.	
Gold Hill & Iowa Mines Co., Quartzburg, Idaho.	
PERKINS, JOHN COWLE Student	BETA
Phi Delta Theta.	
3601 Clinton Ave., Cleveland, O.	
PERKINS, WILLIAM JAMES B. S., E. M. '07	BETA
Kappa Sigma.	
Norway, Mich.	
Mine Supt., Alpha, Mich.	
Salsn. Pluto Powder Co., Ishpeming, Mich.	

---

PERRY, JOE B. E. M. '12	ALPHA
Sigma Alpha Epsilon.	
Mngr. Engr. Pittsburg-Dolores Mng. Co., Rockland Mine, via Yerington, Nevada.	
PHILLIPS, ROBERT BAILEY B. S., E. M. '06	BETA
Box 906, Warren, Arizona.	
PICKARD, BYRON OSCAR B. S., E. M. '07	BETA
Theta Chi.	
Box 762, Phoenix, Ariz.	
POLLEY, ERNEST E. '15	ETA
Delta Tau Delta.	
406 Garfield St., Ft. Collins, Col.	
POSS, JOHN R. Student	BETA
44 Kenilworth Ave., Detroit, Mich.	
POTTER, OCHA B. S. '06	BETA
Tau Beta Pi.	
Supt., Superior Copper Co. and Head of Eff. Dept., Calumet & Hecla Mining Co., Houghton, Mich.	
PRICE, WILLIAM F. B. S. '13	ZETA
Keltz.	
Santa Fe R. R., 123 E. 10th St., Topeka, Kan.	
PROUTY, ROSWELL W. E. M. '12	ALPHA
Chi Psi.	
Care Detroit Copper Co., Morenci, Arizona.	
PULLEYN, JOHN W.	THETA
New York City, N. Y.	
PYLE, ODEN '16	ETA
Phi Kappa Sigma.	
QUINLAN, HOWARD '14	ALPHA
Theta Delta Chi.	
Pine Grove, Nevada.	
QUINN, MAX F. '12	ALPHA
Sigma Alpha Epsilon.	
Iron Mt. Tunnel Co., Superior, Mont.	

- |  |                       |           |
|--|-----------------------|-----------|
| RAMSEY, ELMER R.                                 | E. M. '12             | GAMMA     |
| Sigma Alpha Epsilon, Tau Beta Pi.                |                       |           |
| Care Dorr Cyanide Machinery Co.                  |                       |           |
| 730 First National Bank Bldg., Denver, Colorado. |                       |           |
| RANDOLPH, GEORGE OSCAR                           | B. S., E. M. '07      | BETA      |
| 213 E. Arch St., Marquette, Mich.                |                       |           |
| Box 37, Porcupine, Ont., Can.                    |                       |           |
| RANNEY, ALFRED GARDNER                           | B. S. '13             | ETA       |
| Chi Psi, Delta Sigma Nu                          |                       |           |
| Suburban Utilities Co.                           |                       |           |
| 519 Hicks Bldg., San Antonio, Texas.             |                       |           |
| RASHLEIGH, CHAS. JOHN                            | '14                   | BETA      |
| 73 Diamond St., Houghton, Mich.                  |                       |           |
| REBER, JAS. B.                                   | '14                   | ETA       |
| Phi Gamma Delta.                                 |                       |           |
| Sinking Springs, Pa.                             |                       |           |
| RHOADES, ROY STILES                              | '15                   | EPSILON   |
| Phi Kappa Sigma.                                 |                       |           |
| Casper, Wyo.                                     |                       |           |
| RICE, HERBERT ALLEN                              | Ohio State C. E., '97 | Hon. ZETA |
| Sigma Xi.  |                       |           |
| 1304 Ohio St., Lawrence, Kan.                    |                       |           |
| Head-Dept. of Math., U. of Kan.                  |                       |           |
| RIDDLE, LYNN BARNES                              | '12                   | DELTA     |
| Alpha Sigma Phi, Tau Beta Pi.                    |                       |           |
| 411 5th St., Marietta, O.                        |                       |           |
| Marietta Oil Co., Nowata, Okla.                  |                       |           |
| RICHMOND, KENNETH                                | '16                   | ETA       |
| Alpha Delta Phi.                                 |                       |           |
| RIEGEL, LOUIS F.                                 | E. E. '11             | ALPHA     |
| 3220 Chicago Ave. S., Minneapolis, Minn.         |                       |           |
| Com. Agt. Middletown Elect. Light Co., Box 1004, |                       |           |
| Middletown, Conn.                                |                       |           |
| RIGBY, WILLIAM ARTHUR                            | B. S., E. M. '12      | BETA      |
| Sigma Nu.  |                       |           |
| Mt. Vernon, Iowa.                                |                       |           |
| Mng. Capt. Old Bed Mines, Mineville, Essex Co.,  |                       |           |
| N. Y.  |                       |           |

---

RIGGS, FRED '10 323 W. State St., Princeton, Ind.	BETA
RIKER, EUGENE ALFRED '10 725 Church St., Flint, Mich. Olivet, Mich.	BETA
RINGSRED, GERHARD J. '14 Zeta Psi. 319 W. 4th St., Duluth Minn.	ALPHA
RITCHIE, JOHN R. '16 Delta Upsilon.	ALPHA
ROCCA, BERNARD THOMPSON '15 Alpha Tau Omega. Helen Mine, Middletown, Cal.	EPSILON
ROCKWELL, HARVARD SELDON '15 Sigma Alpha Epsilon. 415 North 59th Ave., West Duluth, Minn.	ALPHA
ROCKWOOD, FLETCHER Student Psi Upsilon. 1700 Thomas Pl., Minneapolis, Minn.	ALPHA
ROOD, LYNN E. M. '09 Delta Upsilon. 584 Grand Ave., St. Paul, Minn. 322 10th Ave., Duluth, Minn.	ALPHA
ROSE, HOWARD LAWRENCE Strong & Cobb Company, 10902, Wade-Park Ave., Cleveland, O.	DELTA
ROSE, WILLIAM A. E. M. '06 Delta Tau Delta. Pickands, Mather & Co., Duluth, Minn.	ALPHA
ROSS, RALPH '17 Lambda, Phi.	ETA
ROWELL, JOSEPH HILL Student 301 E. "C" St., Iron Mountain, Mich. Theta Tau House, Houghton, Mich.	BETA
RUPERT, ALLEN MEAD '11 Died Jan. 1911, near Silverton, Colo.	GAMMA
RUFVOLD, OLAF M. '15 Student	ALPHA

- 
- RUSSELL, D. O. E. M. '09 GAMMA  
Kuala Lumpur, Selangor, Federated Malay States.
- RUTH, ALVIN B. S. '13 ZETA  
Mound Ridge, Kansas.  
606 South Hope St., Los Angeles, Cal.
- SADTLER, CHESTER B. THETA  
Denver, Colo.
- SAWYER, ELDTRETH L. '11 ALPHA  
Phi Gamma Delta.  
1506 Emerson Ave. N., Minneapolis, Minn.  
Sawyre-Cleator Lumber Co., Minneapolis, Minn.
- SCHABER, CARL F. B. S., E. M. '12 BETA  
Theta Xi.  
203 W. Morrell St., Burro Mt. Copper Co., Tyrone  
Jackson, Mich.
- SCHAFER, LOUIS E. M. '09 GAMMA  
Kappa Sigma, Tau Beta Pi.  
Lake City, Colo.  
Silverton, Colo.  
N. M.
- SCHEMMEL, JULIUS P. '16 BETA  
513 Elmore St., Escanaba, Mich.
- SCHLOTTER, LAWRENCE CLIFFORD '13 BETA  
Sigma Nu.  
Alliance, Ohio.
- SCHRADER, ERICH JULIUS E. M. '05 ALPHA  
694 Marshall Ave., St. Paul, Minn.  
Gen. Mgr., Pittsburg-Dolores Mng. Co., Rockland,  
via Yerington, Nev.
- SCHRAMM, OTTO FERDINAND B. S. '12 DELTA  
3190 W. 98th, Cleveland, O.  
Chem. Am. Steel Foundries Co., Alliance, O.
- SCHRAMM, BERNHARD DANIEL E. S. '11 DELTA  
Am. Steel Foundries Co., Philadelphia, Pa.
- SCHREIBER, GEORGE F. '14 BETA  
Alden Coal Co. Norris Fulton Co., Ill.

SCHROEDER, WALTER HUGH	B. S. '11	EPSILON
Phi Delta Theta.		
c-o City Engr. San Francisco, Cal.		
SCOTT, JR., J. ALLYN	'11	ALPHA
Phi Kappa Psi.		
405 N. Central Ave., W. Duluth, Minn.		
SCOTT, JOHN CLINTON	'14	DELTA
Zeta Psi.		
2138 W. 26th St., Cleveland, O.		
SCOTT, JAMES RALPH	B. S., E. M. '11	BETA
Paulding, O., care of Jas A. Scott.		
Chf. Surv., Dome Mines Co., Ltd., Porcupine, Ont., Can.		
SCOTT, WALTER GIFFORD	'09	BETA
Care of J. P. Scott, Traverse City, Mich.		
Civ. Eng. U. S., P. H. S., Ft. Stanton, N. Mex.		
SEGER, RALPH LOGAN	Student	ZETA
Phi Delta Theta.		
1132 N. Harrison, Topeka, Kan.		
SETTLE, WM. CALDWELL	'16	ALPHA
Psi Upsilon.		
1733 S. 3rd St., Louisville, Ky.		
SEVERIN, CARL	B. S. '10	DELTA
10519 Wilbur Ave., Cleveland, O.		
Portland Gold Mng. Co., Victor, Colo.		
SHANLEY, J. R.	'15	GAMMA
Beta Theta Pi.		
1130 Liparo St., Denver, Colo.		
SHEDWICK, JR., WILLIAM	B. S., E. M. '09	BETA
618 N. 34th St., Philadelphia, Pa.		
Care of The Tacoma Smelting Co., Tacoma, Wash.		
SHEFFIELD, FRED W.	C. E. '09	ALPHA
Phi Gamma Delta, Theta Nu Epsilon.		
209 Ash St., Crookston, Minn.		
Civ. Engr., Fargo Bridge & Iron Co., Fargo, N. Dak.		

- 
- SHELDON, CHURCHILL GEAR '10 BETA  
Trout Creek, Mich.
- SHEPARD, GEORGE M. C. E. '09 ALPHA  
Sigma Xi, Tau Beta Pi.  
Kenyon, Minn.  
Care of A. F. Meyer, Consult. Engr., 1001 Germania  
Life Bldg., St. Paul, Minn.
- SHICK, HARVEY B. '14 BETA  
La Porte, Ind.  
Beloit, Wis.
- SHUEY, ARTHUR '16 ETA  
Delta Kappa Epsilon.
- SHIELDS, C. P. '15 BETA  
Hubbel, Mich.
- SIMPSON, JAMES FREDERICK B. S. & E. M. '09 BETA  
Kappa Sigma.  
No. 1 Royal Ins. Bldg. Jackson Blvd., Chicago, Ill.
- SKAVLEM, HENRY GILMAN E. M. '10 GAMMA  
Tau Beta Pi.  
605 Prospect Ave., Janesville, Wis.  
Supt., Canadian Mining & Finance Co., Ltd.,  
Timmins, Ont., Can.
- SMITH, ALFRED LEGGATT B. S., E. M. '06 BETA  
28 Lorraine Court, Pontiac, Mich.
- SMITH, CLINTON BESLY N. D., B. A., E. E. '05 ALPHA  
Died July 6, '13, on Mt. St. Helens, Wash.
- SMITH, FRANKLIN MORSE '14 EPSILON  
Care U. S. R. S. La Mesa, New Mexico.
- SMITH, JR., GEORGE D. B. S. '11 EPSILON  
1541 Larkin St., San Francisco, Cal.  
Carson City, Nevada.
- SMITH, HARRISON W. A. B. '95, S. B. '97 Hon. ETA  
Professor Mass. Inst. Tech., Auborndale, Mass.
- SMITH, LYON Harv. S. B. '05 '10 GAMMA  
Kappa Sigma.  
77 Bedford St., Boston, Mass.  
Care E. R. Smith & Co.

SNEDAKER, EUGENE GEORGE	E. M. '14	GAMMA
Kappa Sigma.		
Goldfield Consolidated Mines Co.		
Box 604, Goldfield, Nevada.		
SNEVE, JACK STICKLEY	M. E. '11	ALPHA
Chi Psi.		
Joy Bros. Motor Car Co.		
321 N. 20th Ave., East, Duluth, Minn.		
SNOW, LESLIE WHITMORE	A. B. B. S. '14	ETA
Theta Delta Chi, Phi Delta Epsilon.		
Daniel Green Felt Shoe Co.,		
100 Summer St., Boston, Mass.		
SNYDER, EDWARD HARRISON	E. M., B. S. '11	BETA
Tau Beta Pi.		
Mgr. & Leaser, Pioche Assay Office, Pioche, Nev.		
SPRING, WILLIS WARE	M. E. '07	ALPHA
Phi Kappa Psi.		
2200 1st. Ave., Minneapolis, Minn.		
Carnegie Fuel Co., Duluth, Minn.		
SPROWL, NORMAN EUGENE	'17	DELTA
1566 E. 82nd St., Cleveland, O.		
STALEY, HENRY H.	B. S. '14	ZETA
Sigma Nu.		
Richmond, Kan.		
STANTON, WOLCOTT P.	'12	EPSILON
Delta Kappa Epsilon.		
2255 Vallejo St., San Francisco, Cal.		
STAPLES, CHEVALIER BAYARD	'08	BETA
Stillwater, Minn.		
Otis Staples Lbr. Co., Ltd., Wycliffe, B. C., Can.		
STAPLES, CHARRON M.	B. S. '10	EPSILON
Tau Beta Pi, Sigma Xi, Phi Beta Kappa.		
Arizona Copper Co.		
Box 744, Morenci, Arizona.		

- 
- |  |                  |         |
|--|------------------|---------|
| STARRETT, HOWARD M.                              | M. E. '09        | ALPHA   |
| Phi Gamma Delta.                                 |                  |         |
| 818 7th St. S. E., Minneapolis, Minn.            |                  |         |
| Sanitary Vacuum St. Cleaner Co.                  |                  |         |
| STEIN, EARL ROSCOE                               | B. S. '11        | DELTA   |
| Crown Cork & Seal Co., Baltimore, Maryland.      |                  |         |
| STEINBACH, HARRY PHILIP                          | B. S. E. M. '06  | BETA    |
| 729 E. 5th St., Duluth, Minn.                    |                  |         |
| Engr., 813 Sellwood Bldg., Duluth, Minn.         |                  |         |
| STEINBACH, CHARLES FREDERICK                     | Student          | BETA    |
| L'Anse, Mich.                                    |                  |         |
| 107 Hubbel Ave., Houghton, Mich.                 |                  |         |
| STEVENS, NATHAN HOY                              | '17              | Delta   |
| 7219 Linwood Ave., Cleveland, O.                 |                  |         |
| STICKNEY, ROBERT                                 | '18              | ALPHA   |
| Chi Psi.   |                  |         |
| STILWILL, EDWARD HERBERT                         | B. S., E. M. '11 | BETA    |
| Tau Beta Pi.                                     |                  |         |
| 163 Maybury Ave., Detroit, Mich.                 |                  |         |
| STONE, CHARLES WELLINGTON                        | '15              | ALPHA   |
| Phi Kappa Psi.                                   |                  |         |
| 3156 Columbus Ave., St. Paul, Minn.              |                  |         |
| STONER, REGINALD CARLYLE                         | B. S. '12        | EPSILON |
| Alpha Tau Omega.                                 |                  |         |
| Geol. Dept., Standard Oil Co., Bakersfield, Cal. |                  |         |
| STRAND, CARLYLE HENRY                            | B. S. '11        | DELTA   |
| Tau Beta Pi.                                     |                  |         |
| Crown Cork & Seal Co., Baltimore, Maryland       |                  |         |
| Baltimore Country Club, Roland Park, Md.         |                  |         |
| STRONG, EARL A.                                  | '14              | GAMMA   |
| Sigma Alpha Epsilon.                             |                  |         |
| Dorr Cyanide Machinery Co.                       |                  |         |
| 735 First Nat'l. Bank Bldg., Denver, Colo.       |                  |         |
| STRONG, JOHN LAWRENCE                            | E. M. '08        | ALPHA   |
| 608 Wolvin Bldg., Duluth, Minn.                  |                  |         |
| Mng. Engr., Oliver I. M. Co., Duluth, Minn.      |                  |         |

STRONG, M. ROY	B. S. C. E. '13	DELTA
Tau Beta Pi Sigma Xi.		
Civil Engineer, Cairo, Ill.		
SULLIVAN, DANIEL CLARENCE	'16	ALPHA
Phi Kappa Psi.		
618 W. Myrtle St., Stillwater, Minn.		
SUMAN, JOHN ROBERT	'12	EPSILON
Delta Upsilon, Tau Beta Pi.		
Geol. Dept. Rio Braro Oil Co., S. P. Bldg.,		
Houston, Tex.		
SUTHERLAND, DAVID LEE	'14	ETA
Chi Psi, Theta Nu Epsilon.		
Atlantic Refining Co., 1431 Liberty St., Franklin,		
Pa.		
SWEENEY, WILFRED GRAY	B. S. '06	BETA
3818 Norris St., Kansas City, Mo.		
Globe, Arizona.		
SWENSON, GUY ANDREW	S. B. '13	ETA
Alpha Delta Phi.		
The John Swenson Granite Co.		
Concord, N. H.		
SUVERKROP, LEW A.	Student	BETA
New York City, N. Y.		
TALLAFERRO, NICHOLAS LOYD	B. S. '13	EPSILON
Beta Theta Pi Tau Beta Pi.		
Asst. Geologist, Standard Oil Co., Shanghai, China.		
TAYLOR, EDWARD ANDERSON	B. S. '11	DELTA
Tau Beta Pi.		
Chief Chemist Grasselli Chem. Co.		
1549 Crawford Rd., Cleveland, O.		
TEMPLIN, RICHARD LAWRENCE	'15	ZETA
Minneapolis, Kansas.		
THIELICKE, CHARLES G.	'12	BETA
2716 Elmwood Pl., Seattle, Wash.		
Alaska Treadwell Gold Mines Co., Treadwell,		
Alaska.		

THOLEN, CHARLES W.	Student	ZETA
Phi Kappa Psi.		
1009 S. 2d St., Leavenworth, Kan.		
428 Linden St., Camden, N. J.		
THOMAS, LESTER	E. M. '12	GAMMA
Beta Theta Pi.		
Ford Motor Co., 930 Humboldt St., Denver, Colo.		
THOMAS, WALLACE SENTENY	'15	ETA
Delta Kappa Epsilon.		
721 E. High St., Springfield, O.		
THOMAS, JAMES EZRA	E. M. '08	BETA
Mineral Point Zinc Co., Depue, Ill.		
THOMSON, PERCY W.	'12	EPSILON
Tau Beta Pi, Sigma Xi.		
South Pasadena, Cal.		
TICKELL, FRED GEORGE	B. S. '12	EPSILON
Delta Tau Delta.		
2601 Durant Ave., Berkeley, Cal.		
Mineralogy Dept. U. of Cal.		
TIMMERMAN, S. H.	Student	BETA
Milan, Mich.		
TIMPERLY, WILLIAM D.	C. E. '10	ALPHA
Sigma Alpha Epsilon.		
1415 Adams St. N. E., Minneapolis, Minn.		
Estimator, Crown Iron Wks., Minneapolis, Minn.		
TOLF, FRANK R.	'13	EPSILON
201 S. Batavia Ave., Batavia, Ill.		
Operators Club, Edison, Cal.		
TORBERT, JAMES BURNETT	B. S., E. M. '07	BETA
Jersey Shore, Pa.		
425 James Bldg., Chattanooga, Tenn.		
TORRANCE, ELIAKIN	C. E. '09	ALPHA
Psi Upsilon, Tau Beta Pi.		
Care of Psi U. House, U. of M., Minneapolis, Minn.		
TREMBRATH, JAMES	'08	BETA
537 Franklin St., Butte, Mont.		
Elk City, Idaho.		

---

TROPPMAN, GEORGE LOUIS	B. S. '10	DELTA
Theta Nu Epsilon.		
1351 East 124th Pl., Cleveland, O.		
1489 Dormont Ave., Pittsburg, Pa.		
TURNER, HARRY MILTON	B. S., E. M. '11	BETA
Kappa Sigma.		
341 Houston Ave., Crookston, Minn.		
Box 90, Pioche, Nev.		
Died, about April 6, 1915.		
URQUHART, GEORGE KENNETH	E. M. '15	ALPHA
Delta Tau Delta.		
1034 Ashland Ave., St. Paul, Minn.		
VAIL, RUDOLPH RISING	B. S. '11	EPSILON
Delta Tau Delta.		
Box 134 East Rand, Transvaal, So. Africa.		
VAN HOUTEN, EDWARD A.		ZETA
Phi Kappa Psi, Sigma Xi.		
Died Feb. 6, 1914, at Chicago, Ill.		
VAN VALKENBURGH, ROBERT RAY	B. S., E. M. '13	BETA
233 College Ave., Houghton, Mich.		
Perseverance Mine, Juneau, Alaska.		
YOUNG, VERTRESS '16		ETA
Alpha Delta Phi, Phi Beta Kappa.		
VARNEY, FRED	B. S., E. M. '08	BETA
Cyanide Plant, Goldfield, Nevada.		
VICKERY, MELVILLE WILLIS	B. S., L. L. B.	DELTA
Sigma Kappa Phi.		
Attorney, 826 Engineers Bldg., Cleveland, O.		
VINAL, ELWIN LEROY	E. M. '07	ALPHA
Consulting Engineer, 452 Empire Bldg., Seattle, Washington.		
VORCK, CHARLES R.	Student Ex. Alpha	GAMMA
Chi Psi.		
Box 502, Golden, Colo.		
WAGNER, JOHN EZRA	B. S., E. M. '08	BETA
Belding, Michigan,		
Jerome, Arizona.		

- 
- WAGNER, RALPH BAPTIST B. S. E. M. '10 BETA  
 Tau Beta Pi.  
 Alma, Mich.
- WAITHMAN, JOSEPH DEL NDETH Student EPSILON  
 Chi Phi.  
 Hayward, Cal.
- WALDNER, CLARENCE EDWIN de la Garde' '13 EPSILON  
 Eureka Humboldt Co.  
 1814 9th St., Alameda, Cal.
- WALKER, STANLEY M. '11 GAMMA  
 Beta Theta Pi.  
 Engineer, 221 First Nat'l. Bank Bldg., Denver, Colo.
- WALLING, BENJAMIN B. E. E. '09 ALPHA  
 Rehnke-Walling Investment Co., 624 Plymouth  
 Bldg., Minneapolis, Minn.
- WALLACE, CARLTON S. '17 ALPHA  
 Sigma Chi.
- WALTER, ALBERT U. Student ETA  
 2801 N. Charles St., Baltimore, Md.
- WANVIG, CHESTER ODIN '12 BETA  
 404 Webster Pl., Milwaukee, Wis.  
 The Wallace & Smith Co.
- WANVIG, JR., JOHN DANIEL B. S., E. M. '08 BETA  
 Tau Beta Pi.  
 404 Webster Pl., Milwaukee, Wis.  
 Supt., Three R Mine, Patagonia, Ariz.
- WARD, RICHARD B. S. '13 ZETA  
 Sigma Chi.  
 Nampa, Idaho.
- WARREN, JR., ALVAH H. M. E. '08 ALPHA  
 Psi Upsilon.  
 645 Fairmont Ave., St. Paul, Minn.  
 Carnegie Steel Co., Duluth, Minn.
- WASLEY, WILLIAM A. E. Met. '09 GAMMA  
 Beta Theta Pi.  
 1541 12th Ave., Greeley, Colo.  
 Tigre Mng. Co., Yzabal, Sonora, Mex., via Douglas, Ariz.

- WASSON, HAROLD JESSE '14 ALPHA  
 Sigma Alpha Epsilon.  
 1121 University Ave., S. E., Minneapolis, Minn.
- WATSON, GUY P. E. M., E. Met. '10 GAMMA  
 Beta Theta Pi.  
 Greeley, Colo.  
 Chem., Steptoe Val. Smelt. & Mng. Co., McGill,  
 Nev.
- WEISEL, GEORGE FERDINAND '06 ALPHA  
 Delta Upsilon.  
 Missoula, Mont.  
 Logging Contr., Missoula, Mont.
- WELCKER, THEODORE JEWELL B. S., E. M. '12 BETA  
 Tau Beta Pi.  
 Consol. Copper Mines Co., Kimberly, Nev.
- WELKER, GEORGE ERNEST (Clarkston) C. E. '09 BETA  
 E. M. '10  
 Omicron Pi Omicron.  
 112 Moran St. S., Oil City, Pa.  
 Chief Engr., Iroquois Nat. Gas Co., Buffalo, N. Y.
- WELLS, JR., RALPH EVANS. B. S. '14 ETA  
 Delta Kappa Epsilon.  
 American Smelting & Refining Co., Murray, Utah.
- WENK, RALPH WALDO B. S., E. M. '10 BETA  
 Kappa Sigma.  
 712 Marianne Ave., Marianne, Mich.
- WENTZ, WALTER WILLIAM ALPHA  
 Elmore, Minn.  
 1401 6th St., S. E., Minneapolis, Minn.
- WESBROOK, DONALD McDERMID M. E. '10 ALPHA  
 Chi Psi, Tau Beta Pi, Sigma Xi.  
 906 5th St. S. E., Minneapolis, Minn.  
 Asst. Engr., Clyde Iron Wks., Duluth, Minn.
- WEST, HAL R. '13 ALPHA  
 Phi Delta Theta.  
 2709 Irving Ave. S., Minneapolis, Minn.

- 
- |   |           |         |
|---|-----------|---------|
| WEST, JOHN ROYLANCE                               | E. M. '10 | GAMMA   |
| Beta Theta Pi.                                    |           |         |
| 1827 32nd St., San Diego, Cal.                    |           |         |
| City Engineer's Office, San Diego, Cal.           |           |         |
| WESTERFELT, EDMUND W.                             |           | GAMMA   |
| Delta Kappa Epsilon.                              |           |         |
| Braden Copper Co., Rancagua, Chili, S. A.         |           |         |
| WHEELER, JR., ALDEN DODGE                         | '15       | ETA     |
| Alpha Delta Phi.                                  |           |         |
| 50 Grafton St., Newton Center, Mass.              |           |         |
| WHEELER, ROBERT M.                                | E. M. '08 | GAMMA   |
| Sigma Alpha Epsilon.                              |           |         |
| Consult. Engr., Denver, Colo.                     |           |         |
| 418 Colorado Bldg., Denver, Colo.                 |           |         |
| WHEELER, WALTER HALL                              | E. M. '06 | ALPHA   |
| Alpha Delta Phi.                                  |           |         |
| Engineer and Contractor; and Jr. Member Chas.     |           |         |
| H. Wheeler & Son, 820 Palace Bldg., Minneapolis,  |           |         |
| Minn.   |           |         |
| WHITE, CHAS. KENNETH                              | B. S. '13 | EPSILON |
| Delta Tau Delta.                                  |           |         |
| Alaska Juneau Gold Mining Co., Treadwell, Alas.   |           |         |
| WHITMAN, ALFRED RUSSELL B. S., M. S.              | '11       | EPSILON |
| Chief Geologist, McIntyre Porcupine Mines, Ltd.   |           |         |
| Schumacher, Ont., Can.                            |           |         |
| WHITMAN, PERCY GREENE                             |           | ETA     |
| Phi Gamma Delta, Theta Nu Epsilon.                |           |         |
| Care of Oakdale Coal Co., Oakview, Colo.          |           |         |
| WIGGINS, RALPH RAYMOND                            | '14       | BETA    |
| Tau Beta Pi.                                      |           |         |
| Care cia Minera La Luz Los Angeles, Prinza-       |           |         |
| polka, Nicuragua, C. A.                           |           |         |
| WILCOX, ARTEMUS D.                                | B. S. '11 | EPSILON |
| Sigma Phi Epsilon, Tau Beta Pi.                   |           |         |
| 1711 Euclid Ave., Berkeley, Cal.                  |           |         |
| Surveyor, Goldfield Consol. Mines Co., Goldfield, |           |         |
| Nev.  |           |         |

---

WILFLEY, ELMER R. '14	GAMMA
Beta Theta Pi.	
1300 High St., Denver, Colo.	
WILFLEY, GEORGE Student	GAMMA
Beta Theta Pi.	
1300 High St., Denver, Colo.	
Silverton, Colo.	
WILKINSON, JOSEPH R. E. M. '14	BETA
Tau Beta Pi.	
Instructor Manual Training, Negaunee, Mich.	
WILKINSON, PAUL HARRIS B. S., E. M. '05	BETA
Care A. C. Wilkinson, North Yakima, Wash.	
Cerro, Colorado, via Santa Ana, Sonora, Mex.	
WILLIAMS, E. I. E. M. '14	THETA
Tau Beta Pi, Delta Tau Delta.	
Madoe Mining Co., Box 387, Frauz, Ontario, Can.	
WILLSON, THOMAS R. '17	DELTA
92 Windemere St., Cleveland, O.	
WILSON, FRANK L. B. S. '12	EPSILON
Atkins Kroll & Co.	
2326 Oregon St., Berkeley, Cal.	
WILSON, HERBERT L. '12	ZETA
Died, August, 1913.	
WING, HOMER WILLIAM '08	BETA
538 W. Main St., Ionia, Mich.	
WISEMAN, ROBERT CUMMINGS Student	ETA
Alpha Delta Phi.	
817 Limestone St., Springfield, Ohio.	
WOOD, F. H. Student	GAMMA
Phi Kappa Sigma.	
Mount Vernon, N. Y.	
WOOD, ELY COCKLE E. M. '09	BETA
Died May 21, 1910, near Santa Barbara, Mex.	
WOOD, ROY UDELL M. E. '14	THETA
Beta Theta Pi.	
Perth, Amboy N. J. Care of Y. M. C. A.	

WOODRICH, OSCAR F.	C. E. '08	ALPHA
Sigma Chi.		
77 Spruce Pl., Minneapolis, Minn.		
Cedar Rapids Savings Bank, Cedar Rapids, Iowa.		
WOODCOCK, EDGAR	Student	EPSILON
Lambda Chi Alpha.		
Eureka, Cal.		
WOODWORTH, SELIM E.	M. E. '13	THETA
Beta Theta Pi.		
Berkeley, Cal.		
Charles Butters & Co.		
WOOLF, JR., JOE H.	'14	GAMMA
Sigma Nu.		
Greeley, Colo.		
WORTHINGTON, HAROLD	'14	ETA
Beta Theta Pi.		
29 E. 77th St., New York, N. Y.		
WORTLEY, RUSSELL BRUCE		BETA
304 Florence St., Houghton, Mich.		
WRIGHT, H. H.	M. E. '09	ALPHA
Zeta Psi.		
C. A. Dunham & Co., 208 Reliande Bldg., Kansas City, Mo.		
YOUNG, OLIVER WILLIAM	B. S. '13	EPSILON
El Tigre Mining Co.		
Yzabal, Sonora, Mex., via Douglas, Arizona.		
ZELNER, OTTO S.	Mich. B. S. '05	Hon. ALPHA
Phi Mu Alpha.		
321 Church St. S. E., Minneapolis, Minn.		
Asst. Prof. of Surveying, U. of M., Minneapolis, Minn.		

The following men, Rhombohedrons, alumni of our present Beta Chapter, are eligible to Theta Tau, but have not yet been initiated:

COSSAR, GEORGE C.	RHOMB '06
East Craig, Corstorphine, Scotland.	
DOUGLAS, JR., THOMAS J. B. S.	RHOMB '03
900 New Hampshire Ave., Los Angeles, Cal.	
MERRY, HENRY M.	RHOMB '07
Box 697, Idaho Springs, Colo.	
YOUNG, JOHN W.	RHOMB '05
1115 Maryland Ave., Milwaukee, Wis.	
Supt. Buildings and Grounds, Milwaukee-Downer College.	

*Alpha '05*

**ERICH J. SCHRADER**  
ENGINEER of MINES

Mgr. Pittsburg-Dolores Mining Co.

A limited amount of consulting  
work accepted.

ROCKLAND via YERINGTON  
NEVADA

*Delta '11*

**MELVILLE W. VICKERY**  
Attorney and Counsellor

826-828 Engineers Building  
CLEVELAND

*Alpha '11*

FAIRMONT  
GAS ENGINE & RAILWAY  
MOTOR CAR CO.

(Formerly Fairmont Machine Co.)

Fairmont, Minn.

W. F. KASPER, Engineering Dept.

*Gama '10*

**LYON SMITH**  
SPECIALTY: CYANIDATION  
Care of E. R. Smith & Co.  
77 Bedford St., Boston, Mass.

*Gama '11*

Examinations

Management

**STANLEY M. WALKER**  
MINING ENGINEER

221-222 FIRST NATIONAL BANK BUILDING

DENVER, COLORADO

Surveying

Mining Machinery

H. M. Smyth Printing Co.  
St. Paul, Minn.



# The Hoover & Smith Co.

616 Chestnut Street  
Philadelphia, Penn.

## *Diamond Merchants*

JEWELERS AND SILVERSMITHS

Theta Tau's Official Fraternity Jeweler

If you want the finest pin made, and novelties of  
the best quality—we make 'em.

SPECIALISTS IN

*Medals — Prizes — Trophies*