

THE GEAR OF THETA TAU

OFFICIAL ORGAN OF THE FRATERNITY



DIRECTORY NUMBER

JUNE, 1914



THE CHURCH OF THE TATA



THE GEAR OF THETA TAU

OFFICIAL ORGAN OF THE FRATERNITY.

JACK E. HAYNES B. A. '08 . . . *Managing Editor*
1787 Hague Avenue, St. Paul, Minn.

ASSOCIATE EDITORS.

RICHARD E. LUTZ, '15 ALPHA
Minneapolis, Minn.

J. R. WILKINSON, '14 BETA
Houghton, Mich.

H. H. DELAITTRE, '15 GAMMA
Golden, Colorado.

ROBERT P. HESTON, '15 DELTA
Cleveland, Ohio.

W. D. McMILLAN, '13 EPSILON
Berkeley, California.

RICHARD L. TEMPLIN, '15 ZETA
Lawrence, Kansas.

HAROLD WORTHINGTON, '14 ETA
Boston, Mass.

Care of E. KLEPTKO, 614 W. 113th St. THETA
New York, N. Y.

Published under the direction of the Executive
Council of Theta Tau.

Subscriptions, \$1.00 per year.

Advertising rates sent upon application to the
Managing Editor.

GRAND OFFICERS OF THETA TAU

Grand Regent—Erich J. Schrader, '05 ALPHA
Rockland via Yerington, Nevada.

Grand Vice Regent—Prof. G. D. Louderback EPSILON
University of California, Berkeley, Cal.

Grand Scribe—H. H. Hopkins, Jr., '08 BETA
164 No. Dearborn St., Chicago, Ill.

Grand Treasurer—B. B. Walling, '09 ALPHA
624 Plymouth Bldg., Minneapolis, Minn.

Fifth Member Ex-Council—R. I. Parker, '12 ZETA
10 Washington Ave., Schenectady, N. Y.



G. D. LOUDERBACK
GRAND VICE-REGENT



ROSS I. PARKER



E. J. SCHRADER
GRAND REGENT



H. M. HOPKINS JR.
GRAND SCRIBE

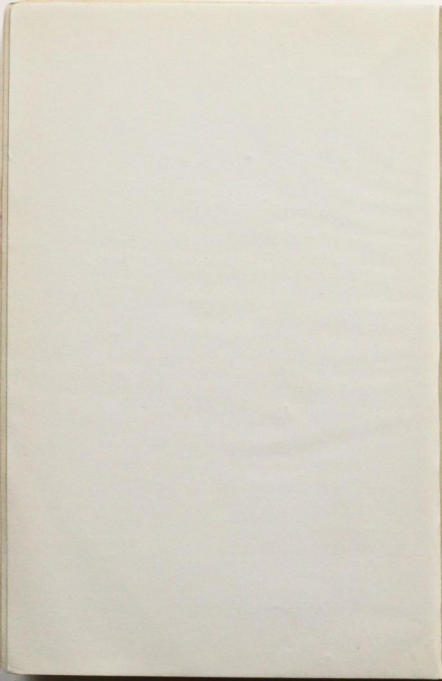


B. B. WALLING
GRAND TREASURER

ΘΤ

EXECUTIVE COUNCIL OF
THETA-TAU

1914 YEAR

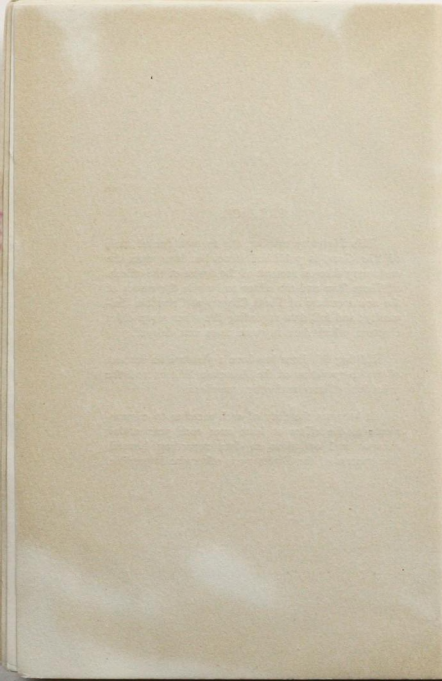


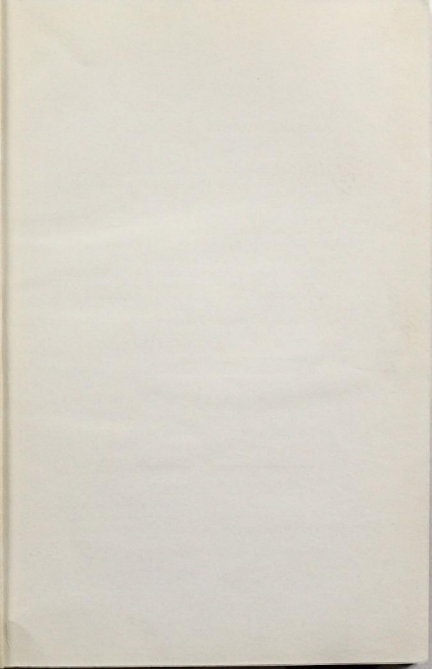
PREFACE.

This Directory number, the seventh annual issue of *The Gear*, is published somewhat later than the customary date on account of the desire of the officers of Theta Tau and the editor to include the names of the new members of Theta Chapter at Columbia University; and full data regarding the other seven older chapters, which data in some cases was delayed.

Editing this issue has been a pleasure on account of the co-operation of the Associate Editors and the individual officers and other members.


It becomes the duty of each member to communicate to the editor at least once each year noting changes and omissions in data regarding himself. The success of the Directory is otherwise impossible.





A SKETCH OF THE FRATERNITY.

By ERICH J. SCHRADER, '05.
Grand Regent.

 N October fifteenth, 1914, Theta Tau will be ten years old. Its growth during the first decade has been steady as shown by the fact that there are now eight Active Chapters located at the principal colleges in the United States, and four Alumni Associations. All composed of men, real men, who are doing credit to their fraternity and themselves.

Alpha Chapter at Minnesota was founded by E. J. Schrader, E. L. Vinal, W. M. Lewis and I. B. Hanks on October fifteenth, 1904. It was then known as Hammer & Tongs; and the badge was a gold skull with a hammer and pair of tongs crossed; on the forehead were the letters Theta and Tau in black enamel.

THE OFFICIAL BADGE



Old Style

Present Design

Beta Chapter, formerly The Rhombohedron Club, at the Michigan College of Mines at Houghton, was established on March 26, 1906. This chapter published *The Gear* for five years prior to 1913, has had its own chapter house for some time and enjoys

the reputation of being a strong unit in Theta Tau.

At Golden, Colorado, the Square Set Club was granted a charter as Gamma Chapter on November 8th, 1907, due largely to the work of W. M. Lewis, one of the founders at Minnesota. Gamma has contributed many of our strong alumni; and is a strong organization at the Colorado School of Mines.

The first alumni organization was formed at Douglas, Arizona, under the name of The Southwestern Alumni Association, on December 24th, 1908.

In 1910 the Chicago Alumni Association came into existence; the national organization of Hammer & Tongs was strengthened, and the business management systematized.

The first national convention was held in 1911 at the University of Minnesota. Brothers Rigby and Snyder represented Beta, Marshall and Dunn, Gamma, Schrader the S-W Alumni Association, and Farnam and Kingsly represented Alpha.

At this convention the name was changed from Hammer & Tongs to THETA TAU; the badge, which resembled that of several other organizations, was declared not especially significant; and the policy of the fraternity was definitely defined as engineering, not that of any one branch of the profession.

A petition from Sigma Kappa Alpha at the Case School of Applied Science in Cleveland was presented to the convention and granted. So on May 23d, 1911, Delta Chapter was established. It occupies its own house and has been prosperous from the start.

Epsilon Chapter at the University of California, at Berkeley, was established on May 4th, 1911, from a local organization founded by F. S. Hudson, Ralph Countryman and Dr. Geo. D. Louderback. Its members have always been strong in scholastic lines and student activities.

Zeta Chapter, formerly Tunnel and Shaft, at the

University of Kansas, Lawrence, Kansas, was established on April 17th, 1912. Its chief organizer was Ross I. Parker, present member of the Executive Council.

The Twin City Alumni Association came into existence February 3d, 1912, with headquarters in Minneapolis.

Eta Chapter, at the Massachusetts Institute of Technology, in Boston, was established on March 23d, 1912, the charter being granted to the Delta Club organized by E. M. Marshall, Gamma '11; Dale R. McEnary, Alpha ex. '14 and Chas. F. Haglin, Alpha ex. '13.

The second convention was held in Houghton under the auspices of Beta Chapter. Meetings were held in the commodious chapter house. Brothers Walling, Hopkins and Schrader of the Executive Council, delegates from the seven chapters and three alumni associations, and several alumni were present.

The Gear, which had become a burden for Beta Chapter, was turned over to a national committee which appointed J. E. Haynes, Alpha '08, first Editor in Chief.

Much business was transacted at this convention and many difficulties incident to running the national fraternity were settled.

On October 15th, 1913, the Cleveland Alumni Association was chartered, a live body of fifteen alumni who helped Delta Chapter in getting its present house.

Theta Chapter, at Columbia University in New York, was chartered on May 7th, bringing the roll of chapters up to eight, which with the four alumni bodies totals twelve units in Theta Tau Fraternity.

THE OFFICIAL BADGE.

Of course every active member of our fraternity, and all the alumni who have graduated since the new badge was adopted have one; but only a small percentage of the members who finished college before it was adopted have ordered new ones. This causes considerable confusion, as new members are not familiar with the old badge, and old members are not familiar with the new one.

A cut of the two is shown in this issue; but this will help matters only temporarily. The only way to relieve the situation satisfactorily is for each member who hasn't done so already, to order a new badge as soon as he can. The badge as shown costs \$6.50. Checks may be made payable to Hoover & Smith Co., or B. B. Walling.

Let me urge every one to attend to this as soon as possible. All orders go through the Grand Treasurer.

BENJ. B. WALLING, Alpha '09
Grand Treasurer.

624 Plymouth Bldg.,
Minneapolis, Minn.

"SAN FRANCISCO IN 1915."

IN behalf of Epsilon Chapter its Convention Committee desires to make the following preliminary announcement of plans for the 1915 Convention. Any suggestions or criticisms from the active chapters or alumni will be welcomed.

The suggested date is September 8-11 inclusive, the business meetings to be held in Berkeley, California. It is proposed that the Grand Officers meet on the 7th and prepare the business so that it can be acted upon without delay by the Convention.

Several short trips will be arranged to be taken during the convention period and their purpose shall be not only to give the visiting brothers an opportunity to visit some of the interesting points of which there are many, but particularly to get those from far distant parts of the country into closer acquaintance and develop the spirit of fellowship and brotherhood.

It is hoped, therefore, that during the convention days all should plan to be together as much as possible.

While the Exposition will be a great attraction in 1915, no special Theta Tau trip is planned to the Fair during the convention time, because it is felt that the time would be too limited to get more than a general view, and the great crowds and numerous distractions would not allow general social spirit to prevail. We urge those who wish to visit the Fair—and that means all undoubtedly—to come early or plan to stay the week after the Convention, and not try to take the time from the convention days and in just so much weaken the good the Convention can do all of us.

Headquarters will be in Berkeley.

Saturday night the Convention Banquet will be held, probably in San Francisco, and an all day trip

will be proposed for Sunday for those so inclined—an excellent suggestion is a trip to Santa Cruz and the Big Trees.

If you have not already done so, start your plans now to attend the Convention. You cannot afford to miss the Theta Tau doings, you will want to see the Fair, so plan to stay at least a week or two.

Next spring the committee will send a circular letter explaining the matured plans for the Convention.

GEORGE D. LOUDERBACK,

J. B. ORYNSKI,

C. E. WALDNER,

Committee for 1915 Convention.

Berkeley, Cal., April 30, 1914.

Address communications, care of Geo. D. Louderback, University of California, Berkeley, California.

A PARAGRAPH FROM PARKER.

Keep the Chapter standards up, and keep on pushing. If we live up to the Theta Tau ideals to the best of our ability we will keep on "Getting there."

ROSS I. PARKER, Zeta '12,

Member of Executive Council.

10 Wash. Ave., Schenectady, N. Y.

ALPHA CHAPTER.

Established Oct. 15, 1904.

University of Minnesota,
Minneapolis, Minn.

By RICHARD E. LUTZ, '15, Associate Editor.

SHORTLY after the last letter to *The Gear* Alpha conducted a special initiation when four new brothers were welcomed into the fraternity,—Geo. A. Geib, W. L. Mahoney, C. W. Stone and Bliss S. Cleveland. Of these, two did not return last fall but will be back next year.

In May, 1913, the University men gave a University Circus for the benefit of the Men's Union. For weeks the campus was besieged with banners and literature proclaiming the date and place of the so-called circus.

For the menagerie each fraternity furnished an animal. Alpha's contribution was a camel, which was really appreciated most by those who supplied the motive power.

"Rufe" Milne graduated in June; and several other brothers who graduated from the four year course expect to return for the post senior year. At the opening of the college year of 1913 we missed "Rufe" and brothers Geib and Cleveland.

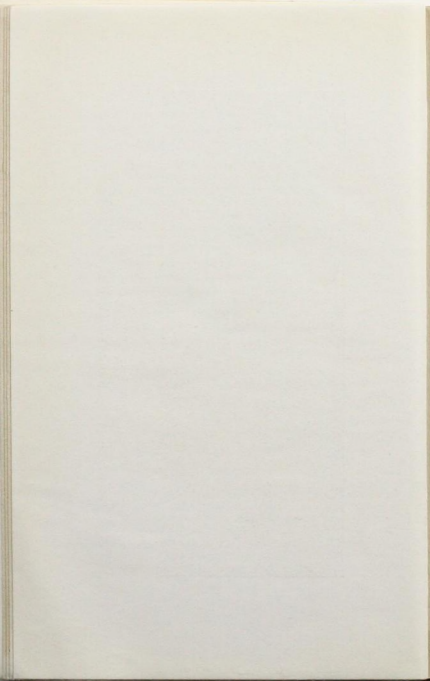
Nine men were pledged: S. S. Loeffler, J. A. Colvin, D. S. Helmick, D. N. Gittinau, C. H. DeVey, W. C. Settle, F. A. Cutler, L. W. Casper and D. C. Sullivan. Initiation took place in November when our number was increased to thirty-three—the largest number Alpha has had for some time.

Dr. William F. Holman, the unanimous choice of the chapter, was initiated in January as an honorary member. All of us have known and liked Dr. Holman ever since he came to the Department of Mathematics; and we are overjoyed to feel now that



ALPHA CHAPTER 1913-14.

Settle	Sullivan	Casper	Houghtaling	Cutler	Johnson	DeVey	Haynes
Dopp	Stone	Helmick	Lutz	Coller	Loeffler	Grinnfield	Rockwell
Urquhart	Calvin	Dorr	Dunham	Ko pper	Rockwood	Eidemiller	Quinlan
Curtis	Wentz	Hewitt	Zelner (Hon.)	Holman (Hon.)	Geotzenberger	Kruse	Mahoney



he is our brother in Theta Tau. With Professors Zelner and Holman we have the pick of Minnesota's Engineering faculty.

This year Alpha has clung to the tradition of giving a party on "Friday the thirteenth." On February 13th the brothers gamboled on the slippery floor until all were ready for the "Home Sweet Home."

Sullivan and Stone left college at mid year; but expect to be back next fall.

This Spring a movement was started for a house; the brothers have taken hold of the proposition so zealously that we will undoubtedly have a house of our own at the opening of the next college year. A building fund will provide for the permanent abode of Alpha, but in the meantime while the fund is growing we will be content with a rented house.

The Annual Banquet was held April 22d at the University Club; and was attended by the Active Chapter and a goodly delegation of T. C. A. A. members. Speeches by brothers Zelner and Holman were the chief features of the evening. Everyone was well pleased and sorry to leave when the time came.

Of the seven men elected to Tau Beta Pi from the senior class four were Theta Taus. The men of Alpha have been in many University activities and are in the principal University organizations.

Alpha sends her greetings to the alumni and sister chapters and extends a cordial invitation to each member to visit at any time.

ALPHA.

Apartments, 319 14th Ave. S. E., Minneapolis, Minn.

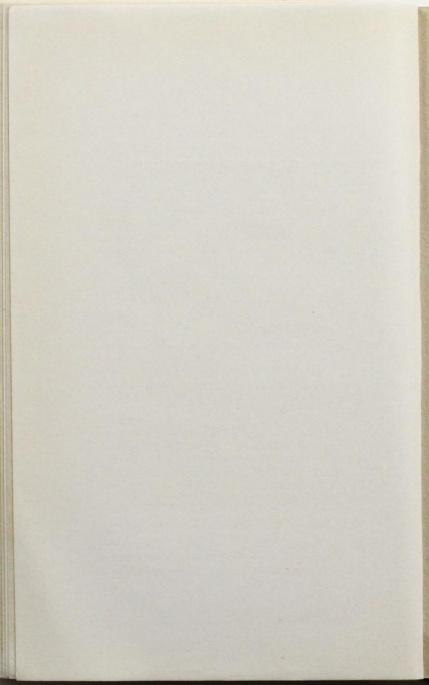
CLINTON B. SMITH.

1880-1913.

CLINTON B. SMITH was born in Rockford, Ill., April 3, 1880, and at the time of his death, July 6, 1913, was 33 years, 3 months and 3 days old, a peculiar combination of numbers. He early moved to Grand Forks, N. D., and gained his B. A. degree at the State University there, and then chose the University of Minnesota for his Electrical Engineering course, graduating as a member of the 1905 class. He was also a charter member of the Theta Tau and always wore his pin thereof with great pride. From the U. of M. he went directly to Butte, Mont., working with the Missouri River Power Co., and holding a responsible position while an electric light plant was being constructed to distribute power obtained from Canyon Ferry, the first of a series of dams that have secured immense electrical power from the Missouri River. He was sent to Hauser Lake and worked there on the construction of the second dam which later went out so disastrously. He was then sent to Helena in the employ of the same company, where he remained until 1909 when he resigned to go to the Pacific Slope and was first associated with the Portland Light and Railway Co., and later with the Pacific Power and Light Co. Part of the time he had charge of the drafting department and later gave nine months or more to perfecting an index system of the work and property of the company that is said to be a hand book for the office. At the last he was working with a dictaphone to simplify the stenographic work. He was very systematic and resourceful, of excellent judgment of men and methods, always to be relied on and was universally liked by



CLINTON BESLY SMITH.
Alpha Chapter,
1880-1913.



his office associates and friends in the community where he lived.

His tragic death occurred July 6, 1913, during an attempt to climb Mt. St. Helens, Wash., when a party of four were overtaken and lost in a blizzard that suddenly came upon them just when the top was reached. They attempted the descent but were separated, two making it almost miraculously, Clinton and his wife, (Iris B. Newkirk of Minneapolis), both being killed; he by a fall, fracturing his skull and she by exhaustion and cold. The search that was made for them lasted over a week and was entered into by men from his own company, members of the Maxamas (a mountain climbing club), foresters, lumbermen and residents of the foothills and surrounding country, and will never be forgotten by those who participated or by those who waited.

ALPHA ALUMNI PERSONALS.

F. W. Buck, '09, married Gladys Gilbert of Superior, Wisconsin, September 3d last.

T. H. Curtis, '12, is with the Montana Reservoir & Irrigation Co., box 115, Helena, Mont.

E. E. Grygla, '08, is placer mining, leasing, No. 142 Manhattan, Nev.

W. H. Wheeler, '06, now personally controls the use of the C. A. P. Turner patents in the Western United States, with agencies in Colorado, Utah, Washington and Montana.

O. S. Zelner, '05, Mich., announces the birth of a daughter. He was appointed Chairman of the Intramural Athletic Comm. Feb. 5, 1914.

BETA CHAPTER.

Established March 26, 1906.

Michigan College of Mines,
Houghton, Mich.

By J. R. WILKINSON, '14, Associate Editor.

BETA Chapter extends greetings and best wishes to her alumni and sister chapters. We are in the midst of a successful year, and hope that our brothers in other chapters, and those not in school have been blessed with equal good fortune and prosperity.

There was little activity during the summer term last year. The first year men took surveying as usual under the direction of Capt. Sperr. Professor Houle was on leave of absence and the course was handled by Mr. Wold and Mr. Peterson. The mechanics in the house displayed their ability over in the Mechanical building; while the geologists were with Professor Seaman as usual.

On April 14th, 1913, we initiated C. J. Rashleigh; and on July 14th we held our summer initiation at which time brothers Allen, Hicks and Shields were initiated.

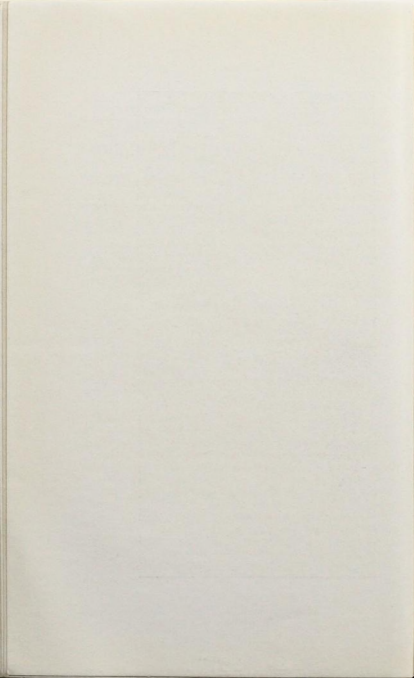
At the opening of school last Fall, 43 freshmen appeared. During the first week, hair cutting on the part of the freshmen and sophomores, was a nightly occurrence. The annual Freshman-Sophomore football game was won by the freshmen by a close score. However, the sophomores came back strong in the basketball game and won handily. On the third Saturday the Fall Smoker was held in the Gymnasium building. Between the smokes and the short addresses by some faculty members and a few students the evening was well spent.

Beta began a vigorous rushing campaign at the



BETA CHAPTER 1913-14.

Drake	Rashleigh	Cramer	McLean	Steinbach	Wiggins	Brown	Hicks	Apell	Fraser	Edwards	Carlson
Gibbs	Hinckley	Nicolson	Schreber	King	Allen	Kendall	Wilkinson				
Loveland	Helne	Coughlin	Shields	Rowell	Clark	Mills	Dobson				
		Bradt	H. F. Mills	Schemmel							



beginning of the Fall term. Within a short time we had pledged nine men,—C. F. Cramer, L. N. Brown, G. A. Apell, A. Kendall, R. King, M. L. Bradt, J. P. Schemmel, D. I. Dobson and H. H. Hopkins, (Flint, Mich.).

On November 13th at the Douglass House the initiation banquet was held. B. B. Ellis, Alpha, was the only alumnus present. The banquet was a huge success. All the arrangements were made by brother Schreiber who acted as toastmaster.

The following toasts were responded to:

"Welcome" Bro. Loveland

"Our Home" Bro. Hinckley

"Other Chapters" Bro. Ellis

"Engineering" Bro. Wiggins

The toasts were ably responded to; the impromptu were excellent; and the singing and general all round good fellowship was there from beginning to end.

From then until Christmas everybody was hard at work with the usual routine school work. The freshmen had by that time made an attempt at absorbing all the A2.

Although most of the brothers went home during the Christmas vacation, those remaining did their best to bring out the Christmas cheer by starting and finishing "Overflow" meetings, and late B. S. sessions at home. On January 6th, school reopened; five new men were pledged during the winter term.

J. B. McLean was initiated March 30th. The annual Spring initiation was held on April 11th. Those initiated were: C. E. Mills, C. W. Nicolson, J. C. Clarke, D. D. Fraser. C. G. Sheldon was the only alumnus present. After the initiation we adjourned to the Douglass House where a feast was provided.

After the inner man was satisfied, brother Love-

land, who acted as toastmaster, introduced the speakers:

"Welcome"	Bro. Rashleigh
"Professional Frats" . . .	Bro. H. F. Mills
"Work"	Bro. Wilkinson
"Theta Tau"	Bro. Gibbs.

Several brothers were called upon for impromptu speeches and responded with pleasing talks.

At the beginning of the Spring term there were 29 men in the active chapter, the largest number active at one time in the history of Beta.

The success of athletics at M. C. M. this year was due to the untiring efforts of brother Wiggins, who was appointed Chairman of the Athletic Committee and Manager of the basketball team. The basketball squad was composed of eight men, six of whom were Theta Tau members. Brothers Coughlin, Rowell and Rashleigh were on the squad again this year; and the new men were brothers Gibbs, Clarke and Nicolson.

The team took the annual Iron Country trip on Washington's birthday and played two games. At Marquette they were defeated the first time during 1914, the score being 42-16. But on March 28th they defeated Marquette by a score of 62-23 on the College Gymnasium floor. This game, the last of the season, was witnessed by a large crowd. School spirit was evidenced by student songs and yells. Out of 12 games played this year nine were won.

Out of four men elected to Tau Beta Pi this spring, three were Theta Taus,—brothers Hicks, Allen and Mills. Brother Wilkinson was elected during the Fall term. H. & T. men have been in the majority among the "Tau Bates" during the past year which speaks well for the men of Beta. The Honorable J. M. Longyear, of Marquette, gave the Class Day address in the college gymnasium April 16th.

His subject was, "Coal Mining North of the Arctic Circle." The lecture was illustrated by slides made from photographs taken by Mr. Longyear; they were exceptionally good, showing many interesting sights about Spitzbergen, or "No Mans Land," while the remarks in explanation by Mr. Longyear added greatly to the interest. During the evening the college orchestra, led by brother H. F. Mills, rendered several selections.

The following Theta Tau men will receive diplomas this year: Wiggins, Hinckley, Schreiber, Mills, Rashleigh, Steinbach, Wilkinson, Gibbs, Loveland and Rowell.

At the annual Senior Banquet, brother Wiggins acted as toastmaster; brother Schreiber responded to the toast of "College Days," and brother Wikinson to "Engineering."

BETA.

Theta Tau House, 233 College Ave., Houghton, Mich.

BETA ALUMNI PERSONALS.

Bro. "May" Feilds was married to Miss Irma Rodi the 7th of April at Cordova, Alaska. Drop us a line "May."

Bro. Burt is still at the Highland Boy mine at Bingham, Utah. We get a letter from Curtis occasionally.

Bro. B. B. Ellis Alpha, who has been in our vicinity for a year or more in charge of the E. J. Longyear interests, has left the Copper Country and is now in the Southwest.

Bro. Jas. A. Barr is still with the International Agricultural Corporation at Mt. Pleasant, Tenn. He is author of "Drag Line Excavators" Engr. Assn. of the South XXIV No. 4 and was just elected Direc-

tor of Congresses at the Panama-Pacific Exposition.

Bro. C. G. Sheldon is now Deputy County surveyor of Ontonagon county.

Bro. P. E. Hinckley has accepted a position as engineer for a mine on the Mesaba Range.

Bro. C. J. Rashleigh left Saturday, the 25th of April, for Tooele, Utah, where he has accepted a position with International Smelting Co., to work in their testing laboratory.

Bro. "Butch" Mills goes to Lorreto, Mich. He has accepted a position as engineer for the Lorreto Iron Mining Co.

Bro. Dan Newkirk is now the proud possessor of a baby daughter.

Bro. "Larry" Schlotter is now in Alliance, Ohio.

Bro. "Brig" Chaffin has left Mullen, Idaho, and is located in Superior, Ariz.

Bro. J. I. Ballard, '10, has an heir, J. B. Ballard, born Jan. 10, 1914.

Bro. D. C. Blackman, '12, married Irma Grosse of Saginaw, Sept. 4th, at Phoenix, Ariz.

Bro. J. C. Metcalf, '13, married Leonora Coughlin, and was promoted to Chief Engineer, Veteran Mine, Kimberly, Nevada.

The following addresses have been changed: J. B. Torbert, Tracy City, Tenn.; K. K. Koontz, State Land Office, Phoenix, Ariz.; W. B. Longan, A. S. & R. Co., Charcas, S. L. P. Mexico; P. H. Wilkinson, La Colorado, via Santa Ana, Sonora, Mexico.

HARRY RICE EDWARDS.

1887-1913.

Our late Brother Harry Rice Edwards, commonly known as "Beck" Edwards, was born in Houghton, Dec. 6, 1887. His early life was spent in Houghton, where he attended the public schools, graduating from the grammar school. He then entered High School, but left during his sophomore year and secured a job underground at the Lake Mine, which job he held for about 18 months. Leaving the Lake Mine he went to the Wisconsin School of Mines to take up preparatory work for entering the M. C. M.

He entered the M. C. M. in the fall of 1910 and took up the regular Freshman work and it was in his sophomore year that he became a member of Theta Tau at the regular fall initiation, Nov. 11, 1911. He continued his school work into January, 1913, taking only two weeks work of the winter term, when he quit school because of his failing health and took a few weeks' rest in bed, gaining in strength greatly.

He left Houghton about March 1st, making one of a party on a trip to Panama. Returning from Panama, he went directly to Globe, Ariz., but the climatic conditions being unfavorable, he went to Silver City, New Mexico, and entered a sanitarium. About two weeks later he died very suddenly before his parents could reach him. This was April 27, 1913.

His death came as a great shock to everyone as he was one of the most widely known and best liked students in college.

He made friends easily and won their admiration and love by his frank open manner and more especially did he win the love and admiration of his brothers in Theta Tau.

GAMMA CHAPTER.

Established Nov. 8, 1907.

Colorado School of Mines,
Golden, Colorado.

By H. H. DELAITTRE, '15, Associate Editor.

THE men whom Gamma has initiated since last year are: Lionel Brooke, E. V. Graybeal, T. W. Callahan, J. H. Woolf, E. A. Strong, E. R. Wilfley, H. S. McKnight, S. J. Burris, J. R. Shanley, B. C. Essig and D. C. Dodge.

Socially, Gamma has been very lax this year on account of so many members being in training some part of the year. We had a banquet at the Brown Palace hotel in Denver on December 3d at which there were present three alumni and all of the active members.

Athletically "Mines" has done wonderfully for the small number of men available. Our football team, which averaged only 154 pounds, was beaten only once during the whole year. Our basket ball team tied for second place, but was adjudged the strongest team in the state at the end of the season; they got a poor start.

Brother Litchfield managed the basket ball team; and brother Snedaker the football team. Brother Burris was Captain of the basket ball team. Brother Luke is president of the Senior class, and brother Essig president of the Junior class.

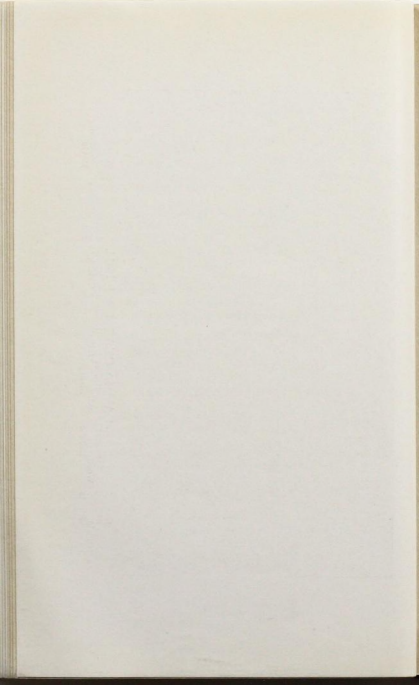
Brothers Strong and McKnight have been elected to Tau Beta Pi, the latter being also captain-elect of the football team. Brothers Brooke, Pearce, Woolf, Shanley and Dodge have also held positions on the baseball or football teams.

The senior class left April 20th for an inspection trip to the larger mills and mines of Montana, Utah



GAMMA CHAPTER, 1913-14.

Crutcher	Snedaker	Pearce	Dodge	Essig	Burns
Litchfield	Woolf	Shanley	Callahan	Graybeal	Whitely
Burris	Brooke	Strong	DeLaittre	Lake	Davis



and Colorado and will return about May 21st. As eleven of the members of Gamma chapter are seniors, the number of actives at present in Golden is small—seven in all. Brother Burns has been forced by sickness to return home. For seven months of the year Gamma flourishes with a chapter roll of from eighteen to twenty-two men; but Gamma begins and ends each year with a small roll.

Just a word about the Colorado School of Mines before closing. Dr. V. C. Alderson has been succeeded by Acting President Haldane; and Dr. Chauvenet has been elected President Emeritus. Under the able directions of these two men the school has undergone marked improvement. New schedules have been arranged which provide for the same amount of work to be covered as before; but allow more time out of the classroom.

The course in Chemical Engineering was found to be inefficient and was dropped. All indications are to the effect that next year's enrollment will be the largest in six years.

Gamma extends a cordial invitation to all its brothers to pay us a visit.

GAMMA.

H. H. DeLaittre, in care of Dr. Garvin, Golden, Colo.

GAMMA ALUMNI PERSONALS.

W. R. Brown, '10, is author of "Blast Hole Drilling in Open Pit Mining," Keystone Magazine; reprinted in M. & St. P. and C. S. M. Magazines.

B. N. Kilbourn, '13, is with the International Smelting & Refining Co., in Tooele, Utah.

M. H. Kilgour, '08, 16 Exchg. Pl., N. Y., is author, with the late Prof. Ayrton, of "The Thermal Emissivity of Thin Wires in Air," printed in Transactions of the Royal Society; joint-author with Mr. Geipel in "The Electrician" Series; author of part 1 of Electrical Distribution"; and of many articles in the various technical journals.

W. M. Lewis, '09, married Florence M. Case of Hartford, Nov. 8th; present address care of Stone & Webster, Bristol, Conn.

E. M. Marshall, '12, married Helen Loughlin in Santa Fe, N. M., January 1st, 1914.

E. R. Ramsey, '12, married Eleanor C. Leonard in Denver, November 2d last.

Lyon Smith, '10, announces the birth of a son, Edward R. Smith 2d, born October 24th. In the Eng. & Min. Journal, March 22, 1913, is an article, "Refining at Pittsburgh Silver Peak Mill," by Bro. Smith.

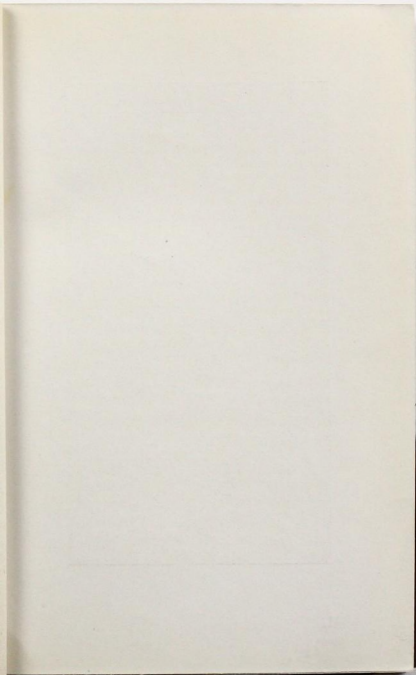
ONE OF KUMKE'S.

Cousin Jack running machine in drift. Rock very hard. Superintendent comes down and wants him to take contract at \$8.00 a foot.

C. J.—"Height dollars a foot not enough, you. Rock's too 'ard, you!"

Supt.—"Yes, but it'll get softer a little farther in."

C. J.—"Dammy, son, I don't see thy tracks coming out o' there. How'st thee know?"





DELTA CHAPTER, 1913-14.

Greenslade	Moree	Sprowl	Braun	Heena	Diemer
MacInnes	Main	R. J. H.	Applegate	Kline	Churchill
	Collier		Badger	Heston	

DELTA CHAPTER.

Established May 23, 1911.

Case School of Applied Science,
Cleveland, Ohio.

By ROBERT P. HESTON, '15, Associate Editor.

THIS year has been a decidedly auspicious one for Delta from many points of view. First and foremost we were able to realize our long cherished hopes for a chapter house. Prior to this year our roll of out-of-town men was not large enough to permit the extension of our quarters beyond a suite of four rooms, but at present there are eight members in the house, which number will be increased one in the near future. We have a matron who leaves nothing to be desired toward satisfying the inner man.

Our efforts to lengthen the chapter roll have been rewarded by the addition of nine new men, brothers Abbey, Greenslade, Braun, Moree, Cotton, Main, Heena and Churchill. Brother MacInnes '13, who dropped out last year, returned after the mid-year examinations. Brother Rose '16 wandered from the fold and is at present studying at Ohio State. Brother Fortune '16 was forced to leave school on account of sickness, but expects to return again. Brother Lavan '14 adjourned his school career to become a real miner for the Y. & O. Coal Company at Barton, Ohio. Brother Cotton did not return after the mid-year, but says his return next Fall is assured.

Thus we record our gains and losses to find that the balance is still on the credit side. *Considering that just a year ago we broadened our policy from mining and metallurgy to general engineering, due to the limited eligible list we found we were compelled to draw from, our own progress this year has been decidedly encouraging.*

The relation of the Fraternity's position in the school to the individual standing of the members has been impressed on the men. This year three Juniors, brothers Kline, Diemer and Churchill were elected to Tau Beta Pi. In the school Senate the fraternity representative, brother Badger, is president and brother Anderson, senator from Tau Beta Pi, is secretary and treasurer. Brother Heston is the Pick and Shovel senator.

Since our broadening out from the Mining department only three of the members hold offices in the Pick and Shovel club. Our representatives in the musical clubs this year were brothers Greenslade, Main and Diemer. In football, brother Perkins received his letter on the 'Varsity while brothers Kline and Applegate were presented with class jerseys for work on the scrub team. Our prospects this year for the basketball team are also good.

At our December banquet for the new men held at the Colonial Hotel the festal board was graced by the presence of eleven alumni from whom the fifteen active men received some very helpful advice and encouragement in their efforts to become efficient engineers. As the graduates have assisted us to a great extent in furnishing the new house the main topic of most of the speeches of the active men was extending thanks to the alumni. By the discussions that arose during the evening the real value of the chapter banquet as a combined meeting of the alumni men and actives for talking over the fraternity affairs was clearly shown. The general air of good fellowship that prevails at such functions is an excellent way of impressing on the initiates the bond that exists between the men.

A few of the alumni living in the city organized the Cleveland Alumni Association for the purpose of assisting the active men in their work of building up

the chapter, and for establishing a fund with which to buy a house at some future time. As the organization became stronger financially definite steps were taken toward helping the active chapter to find a suitable house and complete the furnishing of it. The result of the operations of the association showed last Fall when we returned to school and found that a house had been leased for a year, and enough furnishings bought to give us a good start. When our roll of out-of-town men had increased to a suitable number we started a table. This progress of the chapter would have been impossible if it had not been for our alumni. The chapter was delighted when the efforts of the Delta Alumni Association were rewarded by a charter as an organization known as the Cleveland Alumni Association.

Delta Chapter wishes to take this opportunity to thank her alumni for the excellent results they have accomplished and for the road they have opened up for the active men to push the chapter to a place in the first rank at Case.

This year has probably been the most difficult one in the history of our organization, but the transition stage has passed and Delta Chapter will be more fully equipped next year to meet the problems that face a good healthy fraternity.

In closing Delta wishes to assure all Theta Tau men a hearty welcome in Cleveland, and to extend to her sister chapters her most sincere hopes for a pleasant and prosperous year to come.

DELTA.

Theta Tau House, 2153 Fairmount Road, Cleveland, Ohio.

DELTA ALUMNI PERSONALS.

"Chuck" (C. S.) Arms is one of the few who have stayed by their chosen professions. He is Assistant Metallographist for the Willys-Overland Co., in Toledo. Incidentally he entered the state of matrimony last summer.

O. C. Budde, '12, has turned the tables; he is on the faculty of East High School in Cleveland.

F. E. Caine, '12, is pounding rock for the Caine Stone Co., of Cleveland.

C. W. Cotton, Ex. '15, had some difficulty with the faculty this year but will be with us next Fall.

F. G. Fortune, Ex. '16, struck a two-months' absence last Fall which queered his school work only temporarily, we hope.

Don B. Frisbie, '11, is head of a coal company of his own in Toledo. He has recently become a proud father.

Vic. C. Fugman, '10, left the unsettled region of Sand Coulee, Mont., and is with the Natl. Electrical Lamp Assn. of Cleveland.

C. F. Haeberle, '11, is a real chemist with the Grasselli Chemical Co., of Cleveland. We always knew he would come to no good end.

"Jerry" (G. P.) Hansen, Ex. '13, is still officiating at the Central Furnace of the Am. Steel & Wire Co., in Cleveland.

"Heck" W. T. Hartley, '11, certainly must find Dunkirk, N. Y., a very attractive place as he seldom journeys to Cleveland. He is with the Crucible Steel Co.

Al. C. Hasse, '10, has deserted the ranks and is attending the Cleveland Law School.

Z. C. Kline, '10, has been transferred from the Niles plant of the Natl. Electrical Lamp Assn. to Pawtucket, R. I. He was married last summer.

"Chief" (C. F.) Koehler, '09, has weathered the reorganization of the Garford Co., in Elyria and is Metallurgist with the new Willys-Knight Co., according to the latest reports.

C. R. Kuzzell, '10, is doing smelter work with the Anaconda Copper Co., at Great Falls, Mont. We received an announcement of his wedding early in the year.

Tommy Lavan, Ex. '14, decided after a thorough trial that he was not intended for coal mining and is pursuing his fortune in the Sixth City.

"Swiggin" (A. R.) McLaughlin, '11, never ceases to aspire to John D.'s position. At any rate he is still wedded to his Standard Oil job in Cleveland.

"Romey" (R. D) Malm, '12, is one of the head engineers with some hydraulic power company in Rutland, Vt. He sends us photographs to prove it. He is on the up-grade and going strong.

"Eddy" (J. E.) Moses, Ex. '15, left the Emma Furnace to take over his father's hardware store. He was always a hard proposition.

Lynn B. Riddle, '12, is still extracting oil from the depths at Casper, Wyo., as far as we know. Why so reticent, Lynn?

Howard Rose, Ex. '16, took a turn for the worse and jumped to Ohio State, but we hear he is making good.

B. D. Schramm, '11, and Otto F. Schramm, '12, are doing time at the Am. Steel Foundries Co., at Alliance, O. We imagine that Otto is working for B. D.

J. C. Scott, Ex. '14, is finishing his literary course at Western Reserve University. Two years' of hard study (?) has not detracted from his breezy disposition.

"Pick" (Carl) Severin, '10, was given a respite from his labor of extracting gold at Victor, Colo., last Fall and made us a visit.

"Roscoe" (E. R.) Stein, '11, although we dislike to admit it, is a regular chemist of the Dow Chemical Co., at Midland, Mich.

"Liz" (C. H.) Strand, '11, has remained faithful to the course at Case, and is Metallurgist for the Pennsylvania Railroad at Altoona, Pa.

"Roy" (M. R.) Strong, '13, was recently transferred from the Cleveland to the Pittsburgh offices of the Pennsylvania R. R. We certainly miss him at our Saturday night "500" games.

E. A. Taylor, '11, has decided not to return to Terlingua, Texas, not because of the war, but on account of his receiving the position of Chief Chemist of the Grasselli Chemical Co., at Cleveland.

"Mellis" (M. W.) Vickery, '11, has redoubled his efforts to become a great lawyer ever since one of the Freshmen sold him a sixty-cent Calabash for a dollar. He expects to take the bar examination soon.





EPSILON CHAPTER 1913-14.

Louderback	McMillan	Talliaferro	Orynski	Smith	Campbell	Davis	Feeley
L. W. Orynski	Hegeman	Hegeman	Waldner	McLaughlin	Kew	Kerr	
Craig	Eisenbauer	Gels					

EPSILON CHAPTER.

Established May 4, 1911.

University of California,

Berkeley, California.

By W. D. McMILLAN, '13, Associate Editor.



SINCE the last issue of *The Gear*, Epsilon Chapter has had a very busy and prosperous year, and we take great pleasure in sending our annual greetings to the sister chapters and alumni of Theta Tau.

At the close of the Spring semester of 1913, we initiated seven new members from among the graduates and upper classmen. The initiation was held at the Phi Sigma Kappa House, and the men taken in were: John Orynski, '14; Len Orynski, '14; Clarence Waldner, '13; "Reg" Stoner, '12; Jack Feeley, '14; Donald McLaughlin, '14, and Frank Tolf, '13. On the following Saturday night a banquet was held in Oakland.

Last August we began the present college year with fifteen active members. We continued the custom of holding meetings bimonthly, and having technical papers read by the members at the conclusion of the routine business. These talks are always of great interest to the fellows, as they are along lines in which we are all interested. In connection with this, I might say that we all wish that more of the alumni would write us of their experiences on getting out into the engineering world. A short letter to the chapter once in a while would surely be appreciated.

In December five new men were initiated. This initiation was held at the Beta Theta Pi House. Those taken in were: Frank Smith, '14; Jack Kerr, '14; "Bill" Geis, '15; W. D. McMillan, '13, and A. K. Hegeman, '14. Three weeks later we took in Robt. W. Pack, '08, who was one of the original members of

the local from which this chapter was formed. Immediately following this initiation, which was held in Bacon Hall, we adjourned to Oakland, where Bro. Craig had arranged a very enjoyable little banquet for us at the Cafe Kessler. This banquet will long be remembered by those present, as a number of the charter members of Epsilon were there, and they told us of the early history of this chapter.

In January we began the present semester with everybody back for work with the exception of Don Billick, '13, who left for the mines in Nevada, and A. R. Whitman, '11, who went to Ontario to accept the position of Chief Geologist with the Porcupine Mines Co. Limited.

We immediately began looking over the available material to take the place of the men graduating in May. The result was that the following men were initiated on March 17th: E. L. Packard, U. of Wash., '12; Rhoades, '15; Vander Leck, '15; Hendricks, '15; Bretherton, '15, and Rocca, '15. The initiation was held at the Beta Theta Pi House, and was followed by a little feed.

On March 25th we held our mid-semester banquet at the Cafe Kessler. These little "get-together" parties are always a great success, and our only regret is that there are not more alumni living around here who could be with us at these gatherings.

At the recent election of membership to Sigma Xi Society, Bro. McLaughlin was honored with membership in the society. Bros. Hegeman and Feeley made Tau Beta Pi this year.

Last semester Bro. Waldner was President of the Mining Association, while this semester the job is being ably held down by Bro. McLaughlin. "Bill" Geis has been Assistant Yell Leader this year.

Following the commendable custom set by some of the other chapters, this year we sent out a letter

to all of our alumni telling them a little about the chapter and asking them to let us hear from them. Next year we expect to send out a better letter than the last and we sincerely hope that more of the alumni will write to us.

This brings us up to date, and in closing want to say that we are busy making preparations for the convention to be held here in 1915. The exact date has not been set yet, but it will be in either August or September. The presence of all the graduates at this convention cannot be too strongly urged. So in making your plans for 1915, be sure to include the Theta Tau convention in Berkeley.

With best wishes and success to all Theta Tau men, we remain in H. & T.

EPSILON.

Prof. G. D. Louderback, Bacon Hall, U. of Cal., Berkeley, Cal.

EPSILON ALUMNI PERSONALS.

Alfred R. Whitman, '11, is now Chief Geologist for the McIntyre-Porcupine Mines Limited at Schumacher, Ontario. Their problem is mainly the underground location of new ore bodies and the recovery of those lost by complex faulting. He is author of "A Tin Mine Near Spokane, Washington" (M. & S. Press, July) and "The Vadose Synthesis of Pyrites" (Econ. Geol., Aug., 1913).

"Kon" White, '13, is with the Engineering Department of the Alaska Gold Mining Co., at Juneau, Alaska.

Frank Wilson, '12, is Metallurgical Chemist for the Afterthought Copper Co., at Ingot, Cal. He married Flora A. Wall, Dec. 25th, 1912; and is the author of several articles in various mining magazines

on "Zinc Recovery from Sulphide Ores by the Ammonium-Carbon Process."

John R. Suman, '12, is Chief Engineer and Assistant Superintendent for the Rio Bravo Oil Co., Texas, and has charge of all constructing work relative to their two fields in Texas and their Welsh field in Louisiana.

Roy Morse, '13, after being night chemist for the H. C. & S. Co., at their Purnene Mill, Terr. of Hawaii, for six months, is now acting as head chemist at the same place.

Oliver Young, '13, is in the Mill and Cyanide Plant for El Tigre Mining Co., Sonora, Mex.

Chas. M. Heron, '11, is Superintendent for the above company.

"Art" Eaton, '13, has charge of the collection and installation of a permanent mining exhibit in the State Exposition Building at Los Angeles. Address State Exposition Building, Los Angeles.

Ralph Countryman, '11, is surveying and making a geological map of the Spread Eagle Mine, a group of fifty claims recently acquired by the Mammoth Copper Co., Cal.

N. J. Lund, '11, was married on Dec. 15th, to Miss Gladys Peterson of Berkeley. He is now manager of the Central Creamery Co.'s plant at Cambria, Cal.

Fred G. Tickell, '11, is in the Mineralogy Department at U. of C.

Ernst E. Behr, '11, is in business in Los Angeles—The Spaulding Co.

Harry Coles, '13, is in the Valuation Department of the Pacific Tel. and Tel. Co., S. F.

"Tucky" Taliaferro, '13, is Assistant in the Geology Department at this university.

Frank Hudson, '11, is still putting in his time as

geologist for the S. P. R. R. Co. Address: Derby St., Berkeley, Cal.

Dr. Geo. D. Louderback, U. of Cal., '96, is Associate Professor of Geology at the University of California, vice president of the Pacific Scientific Society, and secretary of the Geological Society.

"Fritz" Davis, '12, is giving several courses at this university in the Geology Department.

Geo. B. Dillingham, '11, is General Manager for the San Vicente Mining Co., San Vicente, Sinaloa, Mex.

W. L. Moody, '11, is geologist for the Southern Pacific R. R. Co., Flood Bldg., San Francisco.

G. C. Gester, '08, and S. H. Gester, '12, are also geologists for the above company.

"Reg" Stoner, '12, is assistant geologist for the Standard Oil Co., at Bakersfield, Cal. Address is 602 Standard Oil Bldg., S. F.

Geo. D. Smith, Jr., '11, married Eleanor G. Hart of Berkeley, November 11th; their home is in Carson, Nevada.

ZETA CHAPTER.

Established April 17, 1912.

University of Kansas,

Lawrence, Kansas.

By RICHARD L. TEMPLIN, '15, Associate Editor.

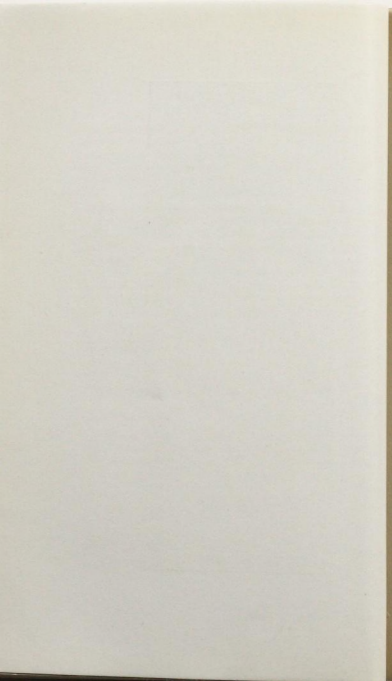
ZETA Chapter extends the sincerest of greetings to all Brothers of Theta Tau and wishes them the best of success for the coming year. The present year has been a prosperous one for this chapter. We now have twenty-three active members and two pledges. In the middle of the second semester last spring (1913), the following men were initiated: F. L. Nutting, L. H. Dodd, J. O. Moffett and Malcolm McCune. At the first of the year two more were initiated, N. W. Brown and C. T. Geiger. Following the mid-year examinations the following men were initiated: J. L. Hunt, W. A. Burton, O. A. Dingman, D. E. Ackers, R. L. Templin, Alfred Harris, E. T. Newcomer and C. J. Painter. H. E. Wheelock and C. L. Van Derlip being pledges at present.

All the members of Zeta Chapter take an active part in the school life and are not lacking in school honors. Ackers is on the Engineers' Dance Committee, Brown is treasurer of the Engineering school and was just elected to the senior honorary society known as Skull and K, Burton is a star football player and was chosen as tackle on the all Missouri Valley team. Dingman is president of the Engineering school and a member of Skull and K; also is engineering editor of the Kansas Jayhawker or school annual. Dodd is president of the Men's Student Council, a member of Sigma Xi, and Skull and K. Kinnear is a member of the Men's Student Council, member of the Sachems, an honorary senior society, and was in the senior play; he is also fraternity editor



ZETA CHAPTER 1913-14.

Painter	Ackers	Butler	Klinnear	Barton	Newcomer	Nutting
Brown	Dodd	Fairchild	Rice	Angevine	Murphy	Dingman
Hunt	Gelger	Parker	Prof.	Seger	Harris	Bliss
		McCune	Templin	Whelock		



of the Jayhawker. Murphy was Student's Day speaker for the Engineers. Carl Painter is a member of the Glee Club and Skull and K. Charles Painter is on the varsity base ball team. James Parker is a varsity football man and a member of the Sachems.

Angevine is chairman of the Mechanical Engineering Society. Fairchilds is member of the Skull and K.

The graduates of last year were R. J. Bodman, Chas. M. Coats, H. H. Campion, R. N. Hoffman, W. F. Price, B. A. Ruth, R. B. Ward, and E. A. Van Houten. The following men did not return to school this year, but we hope to have them with us next year: C. B. Hostetler, J. O. Moffett and C. W. Tholen.

One of Zeta's favorite ways of getting in touch with the engineering school and faculty is to give informal smokers and invite the faculty and possible initiates. These smokers have done much toward a closer relationship and better understanding between the school and Zeta chapter, both of whom are thereby aided. The first of the smokers was given in December at the Sigma Alpha Epsilon House. A large number of men including faculty members and Dean of the school, were present. Informal talks were given and light refreshments served. The second smoker was held in April. The whole faculty were invited and talks concerning the advancement of closer relationship between instructors and students, and Engineer's Day were given by both Brothers and faculty members.

It now seems a surety that Zeta chapter will have a house of its own next year. Owing to our large percentage of other fraternity members we have heretofore been unable to have a house, but now we

have enough men willing to go into a house, so hope to have a permanent home here next year.

Last fall Bro. Rice entertained the chapter most royally with a delightful dinner at his home. At this dinner was Bro. R. I. Parker of the Executive Council. One of the greatest events of the year was our Founder's Day banquet commemorating the founding of Zeta chapter. The banquet was held at the Eldridge House and was attended by all members with Bro. Rice as toastmaster.

Following this were talks and toasts, then a hearty goodnight.

Zeta chapter has regular meeting every two weeks at the various fraternity houses. At the meetings a regular routine business is first gone through, then follows a technical talk and paper. The talks are by our experienced men on work they have done, and the papers are prepared by men who have posted themselves on the given subjects. After the papers a general discussion of momentous affairs and facts of general interest, is held. Following this comes the adjournment to "eats" at the College Inn.

Our new officers for the next half year are Bro. F. L. Nutting, Regent; Bro. Malcolm McCune, Vice Regent; Bro. R. L. Templin, Scribe; Bro. J. L. Bliss, Treasurer; Bro. Carl Painter, Corresponding Secretary.

The following alumni have visited us during the year: Bros. J. P. Boesche, H. H. Campion, F. E. Johnson, J. O. Moffett, R. I. Parker, C. W. Tholen and R. B. Ward. It is a hope of some of our members to meet distant Brothers at San Francisco in 1915.

Wishing the Bróthers of Theta Tau the best of success we solicit your further correspondence.

ZETA CHAPTER.

Prof. H. A. Rice, U. of Kansas, Lawrence, Kansas.

ZETA ALUMNI PERSONALS.

Oliver L. Andrews, '12, is with the Detroit Copper Co., Morenci, Ariz.

John P. Boesche, '12, is with the division engineer of the A. T. & S. F. R. R. at Chanute, Kans.

Russell J. Bodman, '12, is a bridge draftsman with the L. S. & M. S. R. R., at 9289 Hough Court, Cleveland, O.

H. H. Campion, '13, is with the Westinghouse Electric Co., his address is 419 Ross Ave., Wilkesburg, Pa.

R. N. Hoffman, '13, is with a copper mining company at Chiquiacamata, Chile, (via Antofagasta).

C. B. Hostetler, '14, is with a mining company at Morenci, Ariz.

F. E. Johnston, '12, is at 1001 N. 6th St., Ft. Smith, Ark.

A. H. Mangelsdorf, '12, is with a mining company at Morenci, Ariz.

J. O. Moffett, '14, is engaged in concrete construction work in St. Louis, Mo. His address is 1527 Minerva Ave.

R. I. Parker, '12, is with the General Electric Co. His address is 10 Washington St., Schenectady, N. Y.

Wm. F. Price, '13, is in the signal department of the A. T. & S. F. R. R. His address is 123 E. Tenth St., Topeka, Kan.

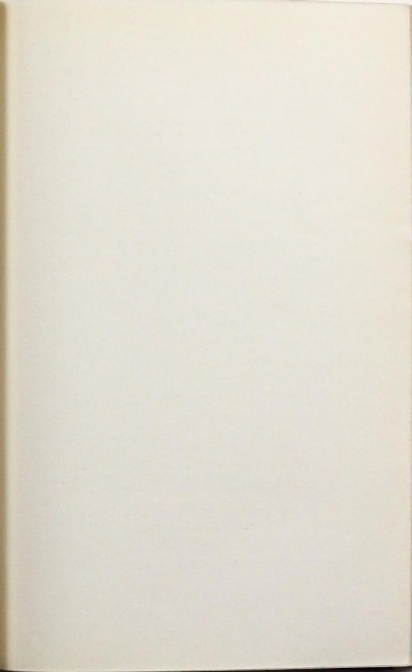
H. H. Staley, '14, finished school in the middle of the year and is now at his home in Richmond, Kansas.

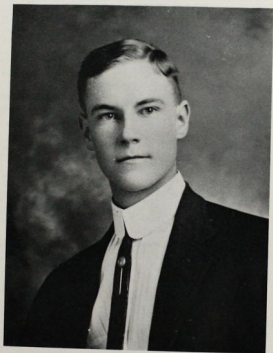
Chas. W. Tholne, '14, has been transferred from Kansas City to 428 Linden St., Camden, N. J., where he is with an engineering company.

R. B. Ward, '13, is engaged in irrigation work at Nampa, Idaho.

Chas. M. Coats, '13, is with a mining company at Jerome, Ariz.

H. A. Rice, is now head of the Dept. of Mathematics in the U. of Kansas; he was recently elected President of the Kansas Engineering Society, a state organization.





EDWIN A. VAN HOUTEN.

Zeta Chapter,
1889-1914.

EDWIN A. VAN HOUTEN.

1889-1914.

The members of Theta Tau were terribly shocked by the news of the sudden death of Brother Edwin A. Van Houten, who died at Chicago the morning of February 6th, 1914, following an operation for appendicitis. Brother Van Houten's brilliant record in Zeta chapter and in the University was still fresh in our minds. He graduated with high honors last June and was entering upon a career that promised to bring much honor to the fraternity.

Edwin A. Van Houten was born at Topeka, Kansas, Jan. 2, 1889. He graduated from the public schools of that city and entered the University of Kansas in the fall of 1909. He was initiated into the fraternity on April 17, 1912, and was always a strong and tireless worker for the best interests of Theta Tau.

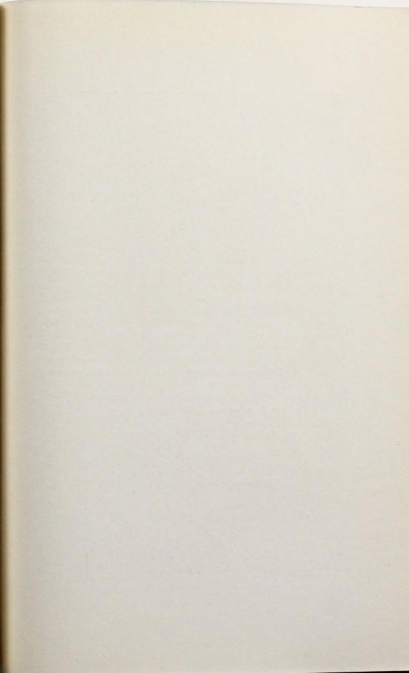
In college activities Brother Van Houten was unusually prominent. During his four years at the University he served as secretary of the engineering school, president of the Student branch of the American Society of Mechanical Engineers, chairman of the junior social committee. He was a member of the Good Government Club, the Friars, the Senior Society of Sachems, the Phi Kappa Psi fraternity, and Sigma Xi, the honorary scientific fraternity.

HERBERT L. WILSON.

1890-1913.

Herbert L. Wilson was born at Lyndon, Kansas, Nov. 9, 1890. At this place he attended the public schools and after graduation therefrom he entered the University of Kansas in the fall of 1908. He was one of the charter members of Zeta Chapter and while being of a retiring disposition was very much liked by all who knew him. He was a very good student, was a member of the honorary scientific society Sigma Xi, and gave every promise of becoming one of the foremost engineers. He received his degree of B. S. in June, 1912, after which he went to work for the A. T. & S. F. R. R.

He died in August, 1913, while working for the Santa Fe, and was buried at Lyndon, Kansas.





ETA CHAPTER, 1913-14.

Alexander	Leslie	Flick	Africa	Kittredge	Wheeler	McPherrin	Baird	Bannister
O'Donnell	Lord	Walter	Benton	Leeb	Camp	Dean	Reber	DeFornery
Jerome	Sutherland	Polley	Prof. Smith	(Hon.) Fiske	Beach	Worthington	McEnary	Snow
Lawrason			Hurlbutt		Osborne	Fletcher		

ETA CHAPTER.

Established March 23, 1912.

Massachusetts Institute of Technology

Boston, Mass.

By HAROLD WORTHINGTON, '14, Associate Editor.

IT IS with greatest pleasure that we welcome this opportunity of greeting our brothers in Theta Tau.

Eta Chapter has nothing but good news to tell. The Spring initiation and banquet took place April 14th. Four men were taken in from 1915 and four from 1916. These with the six men initiated in the Fall brought our active membership up to thirty-six.

Professor Harrison W. Smith became our first honorary member. He is a graduate of Harvard and M. I. T., a man of wide interests and cultivation, being a member of the electrical faculty of the Institute and an extensive traveler in the unexplored countries of the world. Tales of his experiences with the natives of Borneo are intensely interesting, as are also many trophies that he has brought from there.

Of the new men taken in this year, Camp and Worthington are graduates of Yale, 1912, and Beaton and O'Donnell of Princeton, 1913.

Theta Tau has been very active in college life. We have six men in Osiris, the senior honorary society; and four on the Institute Committee, the undergraduate governing body of the Institute. We have two members on the board of *Technique*, the annual publication; the president of the Mining Society; three men on Masque, the Tech show society; the business manager of the Tech show; the president and one member of the Walker Club. In athletics we have two men on the wrestling team which has not been beaten for two years, and this year won the New Eng-

land championship; the captains of next year's track and hockey teams; the manager of the track team this year and several men on the team.

The business meetings have been held at 97 St. Stephens St., and the dinners, which take place every three weeks, at the Hotel Westminster. At the dinners papers on the following subjects have been read:

Submarine Construction.

Wireless Telegraphy.

Lighthouse Construction.

The National Road.

On March 19th Regent Fiske gave a dance to the members of Theta Tau at his home in Auborn-dale. The brothers turned out in force each bringing a more beautiful girl than the last. Professor Smith was an interested member of the party. He was heard to remark that the last time he had danced was when he gave an exhibition of the several dances before a large gathering of savages in one of the South Sea Islands. We imagine that he got many new ideas and would now be able to beat the heathens at their own game. The evening was a great success.

On account of the uncertain state of affairs at the Institute due to the fact that it is going to move to Cambridge in a year or two, no definite arrangements have been made to procure quarters. We hope for permanent quaters when once we get to the other side of the river.

Many of us hope to be in "SAN FRANCISCO IN 1915," and there get to know the brothers personally. Until then we wish you the best of luck and success.

ETA,

Harold Worthington, 91 Westland Ave., Boston,
Mass.

THETA CHAPTER.

Established May 7, 1914.

Columbia University

New York, N. Y.

Theta Chapter, chartered May 7th, just as *The Gear* goes to press, is composed of fifteen members of the Senior Mining Society and students of the Department of Mining and Metallurgy.

I. W. Hadsell is captain of the Varsity crew, and chairman of the Class Dinner Committee.

T. H. Barrett is captain of the Varsity swimming team.

H. E. Bird is class secretary and was elected to Tau Beta Pi.

C. M. Brister earned his B. S. at Virginia Military Institute in 1911.

D. G. Campbell is a member of Tau Beta Pi, Sigma Xi and the Varsity hockey squad.

W. W. Colquhoun, a member of Tau Beta Pi, is captain of the Varsity soccer team and chairman of the Honor System committee.

L. V. Lee has been identified with several varsity organizations including the Show Cast, Show Chorus and Players Club.

C. F. MacCarthy has been a member of the crews, the Class Dinner committees and chairman of the rules committee. He is chairman of the Board of Student Representatives and Y. M. C. A. recorder.

J. S. Miller, oarsman, was also on the Sophomore Dinner Committee.

G. S. Patterson, member of Tau Beta Pi, was on the Varsity wrestling team two years and is vice-president of the class.

J. W. Pulleyn has many honors including membership in the crews, swimming team, finance com-

mittee, class book committee, dinner committee and Senior Society of Nacoms.

C. B. Sadtler, Tau Beta Pi member, is president of the Mining and Metallurgical Society and belongs to the Varsity wrestling team.

E. I. Williams, a member of Tau Beta Pi, was on the Varsity crew, the Board of Student Representatives and was leader of the Glee Club.

R. U. Wood, for two years the coxwain of the Varsity crew, was manager of the University trophy room also.

S. E. Woodworth belonged to the Glee Club three years and is a member of Notes and Keys.

We will look forward to the publication of the first Chapter Letter and picture of our youngest chapter with great interest.

Address: Ernest Klepetko, 614 W. 113th St., N. Y., N. Y.

SOUTHWESTERN ALUMNI ASSOCIATION.

Established Dec. 24, 1908

At Douglas, Arizona.

SINCE our last letter, the Southwestern bunch has had a good rousing meeting. The meeting was held in Phoenix during the state fair Nov. 6 and 7, and was a great success due to the hard and enthusiastic work of Bro. Kumke with the assistance of Bros. Koontz and Pickard.

The following brothers were present: Bros. C. A. Kumke, K. K. Koontz, B. O. Pickard, W. De Camp, R. B. Phillips, W. G. Sweeney, G. D. Elliott, A. H. Manglesdorf, and A. L. Ferris. The officers elected for the following year were: President, A. L. Ferris; secretary and treasurer, A. H. Manglesdorf. Since the meeting Bro. Manglesdorf has left the Southwest and the work of the secretary and treasurer turned over to Bro. Ferris.

At the meeting fraternal matters were discussed and Bro. Kumke elected as a delegate to the next national convention. On the evening of Nov. 6 a dinner party was held at the Adams hotel and here some of the newer members first heard some of the famous stories of Bro. Kumke.

The next meeting will probably be held in the Clifton-Morenci district and it is hoped that as large and enthusiastic a bunch will get together as was at Phoenix.

In order to keep in touch with all Theta Tau men in the Southwest, the secretary would appreciate very much if all the chapters would inform him when any of their men leave for here or Mexico.

SOUTHWESTERN ALUMNI ASSOCIATION.

A. L. Ferris, Engr. Shannon Mine, Metcalf, Ariz.

CHICAGO ALUMNI ASSOCIATION.

Established 1910.

Chicago, Ill.

THE ANNUAL meeting and election of the Chicago Alumni Association of Theta Tau was held at the Breevort Hotel, Chicago, Jan. 3d, 1914.

The following members were represented in person or by proxy: G. A. Anderson, J. B. Armitage, J. A. Barr, C. B. Cameron, J. M. Crabb, D. Dyrenforth, E. P. Luce, B. H. McLachlan, W. T. McNabb, C. D. Peacock, C. F. Schaber, L. C. Schlotter, C. G. Sheldon, J. E. Thoms, H. H. Hopkins Jr., J. F. Simpson and P. P. Furber.

The following officers were elected for the year 1914:

H. H. Hopkins Jr.,	President
J. F. Simpson,	Secretary
P. P. Furber,	Treasurer

CHICAGO ALUMNI ASSOCIATION,

H. H. Hopkins Jr., 164 N. Dearborn St., Chicago, Ill.

TWIN CITY ALUMNI ASSOCIATION.

Established Feb. 3, 1912.

Minneapolis, Minnesota.

THE Twin City Alumni Association of Theta Tau sends greetings and best wishes through this letter to *The Gear*, to all the brothers in Theta Tau.

The executive committee of our Association has been much gratified by the interest that has been shown in the work the past season and the apparent enthusiasm with which the meetings have been attended.

The first meeting of the season was held at the Minneapolis University Club, a program of the work blocked out, and officers elected as follows:

Walter H. Wheeler,	President
Jack E. Haynes,	Vice-President
Arthur Larkin,	Treasurer
Paul A. Johnson,	Secretary

To facilitate matters an executive committee was appointed which met from time to time to arrange the details. It was decided to hold the meetings in the business district of the city, at the various offices of the members, and to precede the regular meetings by a dinner and social hour. This plan has seemed effective in bringing up the attendance and stimulating interest. It was also voted to allow members to bring occasional guests, who are not Theta Tau men, to the meetings, and to permit a limited number of men from the active chapter to attend if they wished. This feature has also tended to increase interest in the proceedings.

Only one paper has been read at each meeting, and the committee has aimed to have each a carefully

prepared and finished work. The papers have required from one to one and one-half hours each to present, and in several instances have been illustrated by lantern slides. A list of the papers with the names of the writers follows:

Picturesque Yellowstone Park and Its Geology, Illustrated.—Jack E. Haynes, Alpha '08.

Logging and the Manufacture of Lumber, Illustrated.—Arthur E. Larkin, Alpha '08.

The Construction and Management of Office Buildings.—John W. Adams, Alpha '11.

The Concentration of Iron Ores.—Neil S. Kingsley, Alpha '11.

On the Curriculum of Engineering Colleges.—Wm. F. Holman, Ph. D.

It is our hope and aim to continually raise our standards and thus increase our membership and interest. We are confident if the Alumni learn to appreciate the great benefits they can derive from attendance at and participation in our Association meetings, there will be not only keen interest in the meetings, but active competition among the members for opportunities to take part in the literary and other work. We know of no other similar organizations that hold out to their members better advantages for general education and broadening knowledge than do Theta Tau Alumni associations, particularly those situated in the large cities of the country, if properly developed. To substantiate this statement we refer to our literary program for the current year and the subjects included therein, presented by men of knowledge, expert in the lines covered.

TWIN CITY ALUMNI ASSOCIATION,

Walter H. Wheeler, 822 Palace Bldg., Minneapolis, Minn.

CLEVELAND ALUMNI ASSOCIATION.

Established Oct. 15, 1913.

Cleveland, Ohio.

ALTHOUGH the Cleveland Alumni Association is the youngest of the associations it has accomplished many important things this past year for the advancement of Delta, and the true spirit of Theta Tau.

We ventured to back the new house project of the active chapter. It did not take long to show what could be accomplished with a little encouragement and support. We now feel that the more we can do for the chapter the stronger both of us will become.

The regular monthly meetings are well attended; and we always have some stray alumnus who drops in from some nearby city or town.

It is a pleasure to visit the Chapter House most any time and go back to those good old days recalled by listening to the tales of woe or gladness.

The spirit that prevails there now was never before so well shown. It existed but was not aroused. The chapter, of which the alumni now feel themselves a part has made remarkable strides. This has been an incentive to us to get busy and help boost as never before, everything connected with Theta Tau.

Our circular letter to the alumni has been delayed but is now on its way and we hope the delay will be compensated by the news it contains.

We hope the success this past year will be felt by all those interested in Theta Tau. We are aroused to go after greater things this coming year. We hope that all the chapters and alumni associations may have success, and that this year's publication will be a record breaker.

CLEVELAND ALUMNI ASSOCIATION,

O. C. Budde, Compton Rd. Cleveland Heights,
Fairmount, Ohio.

DIRECTORY

ABBEY, NELSON DANIEL	'15	DELTA
3325 Glenwood Ave., Toledo, O.		
ABBOTT, THEODORE S.	E. M. '11	ALPHA
Chi Psi.		
425 Dayton Ave., St. Paul, Minn.		
Chief Engr. Liberty Bell Mine, Telluride, Colo.		
ACKERS, DEANE EMMETT	'16	ZETA
Beta Theta Pi.		
Abeline, Kan.		
ADAMS, JOHN W.	C. E. '11	ALPHA
Chi Psi.		
30 Kent St., St. Paul, Minn.		
Hennepin Holding Co., Minneapolis, Minn.		
ALDERSON, GEORGE EDWARD	B. S. '09	DELTA
Theta Nu Epsilon.		
2259 E. 90th St., Cleveland, O.		
99 Meserole Ave., Brooklyn, N. Y.		
ALEXANDER, EDWARD PORTER	Student	ETA
Phi Kappa Psi.		
1211 E. 1st St., Duluth, Minn.		
ALLEN, ARTHUR P.	'15	BETA
Tau Beta Pi.		
323 E. 4th St., Flint, Mich.		
ALLEN, CHESTER ARTHUR	Student	EPSILON
1541 Hawthorne Terrace, Berkeley, Cal.		
Standard Consol. Mng. Co., Bodie, Cal.		
ALSIP, ALBERT ARTHUR	E. M. '08	BETA
4937 Woodlawn Ave., Chicago, Ill.		
Helen Mine, Ontario, Canada.		
ANDERSON, GEORGE ANDREW	B. S. E. M. '06	BETA
301 Hudson Ave., Detroit, Mich.		
Engr. 514 Penobscot Bldg., Detroit, Mich.		
ANDERSON, ROBERT JOHN	Student	DELTA
Tau Beta Pi.		
7608 Harvard Ave., S. E., Cleveland, O.		
ANDREWS, OLIVER L.	B. S. '12	ZETA
Powhattan, Kan.		
Draft. Detroit Copper Co., Morenci, Ariz.		
ANDREWS, WORTH BRIGGS	E. M. '06	BETA
Pres. and Gen. Mgr., Oro Belle Mines Co., Hart, Cal.		
ANGEVINE, LELAND CHARLES	Student	ZETA
1521 N. H. St., Lawrence, Kan.		

APÉLL, GIDEON A. '15	BETA
2558 Iowa St., Chicago, Ill.	
APPLEGATE, JOHN SAM Student	DELTA
1523 Millicent Ave., Youngstown, O.	
ARMITAGE, JOHN BARNUM B. S., E. M. '10	BETA
422 East St., Three Rivers, Mich.	
Engr. Oliver Iron Mining Co., Duluth, Minn.	
201 Wolvin Bldg. Duluth, Minn.	
ARMS, CHARLES SEELYE B. S. '12	DELTA
1971 E. 79th St., Cleveland, O.	
1319 Jefferson Ave., Toledo, O.	
ARNOT, STANLEY L. Student	EPSILON
Pi Kappa Alpha.	
Placerville, Cal.	
ATKINSON, WILLIAM B. M. E. '10	ALPHA
Psi Upsilon.	
Barnesville, Minn.	
Lake Superior Paper Co., Ltd., Sault Ste Marie, Ont., Can.	
BADGER, ALLEN CARL Student	DELTA
Tau Beta Pi.	
1314 E. 76th St., Cleveland, O.	
BAIRD, LYMAN S. Student ex. Alpha	ETA
Alpha Delta Phi.	
102 St. Paul St., Austin, Minn.	
BALLARD, JOHN IRWIN B. S., E. M. '10	BETA
Sigma Alpha Epsilon, Tau Beta Pi.	
Alliance, O.	
1st Asst. Engr. Quincy Mining Co., Hancock, Mich.	
BANNISTER, ALFRED EDWARD '15	ETA
Kappa Alpha.	
3300 London Road, Duluth, Minn.	
BARNUM, MARVIN C. M. E. '11	ALPHA
Beta Theta Pi.	
1616 W. 22d St., Minneapolis, Minn.	
Nor. Machinery Co.	
BARR, JAMES ALLEN B. S., E. M. '07	BETA
Engr. International Agricultural Corp., Mt. Pleasant, Tenn.	
BARRETT, THEODORE H.	THETA
Delta Upsilon.	
Richmond Hill, N. Y.	

-
- BARTLETT, HIRAM LAWRENCE B. S., E. M. '04 BETA
Care of J. E. Bartlett, Jackson, Mich.
Contr., Virginia, Minn.
- BATSON, CHARLES DREWRY C. E. '07 ALPHA
Beta Theta Pi.
912 Goodrich Ave., S. Paul, Minn.
Mgr. Republic Creosoting Co., Mobile, Ala.
- BEACH, GEORGE ALBERT '14 ETA
Sigma Alpha Epsilon.
Ft. Collins, Colo.
- BEHR, ERNST EDWARD B. S. '10 EPSILON
Beta Theta Pi, Mim Kaph Mim.
295 W. Cal. St., Pasadena, Cal.
The Spaulding Co., Los Angeles, Cal.
- BENSON, ANTHONY FREDERICK E. M. '03 BETA
Hubbel, Mich.
Consult. Engr., Mesabi Engr. Co., Virginia, Minn.
- BENTON, HERBERT G. C. E. '13 ETA
406 Hancock St., Brooklyn, N. Y.
- BERYOUSKY, THEODORE D. E. M. '09 GAMMA
Del Norte, Colo.
Supt. N. S. Min. & Red. Co., Amado, Ariz.
- BEVER, CLARENCE ALFRED B. S. '13 DELTA
1796 W. 57th St., Cleveland, O.
Otis Steel Co., Cleveland.
- BICKNELL, FRANK P. '12 GAMMA
Beta Theta Pi.
1240 Carroll St., Brooklyn, N. Y.
Chem. Rm. 407, 45 W. 34th St., New York, N. Y.
- BILLICK, DON CARLOS B. S. '13 EPSILON
Pi Kappa Phi.
Box 366, Ely, Nev.
- BIRD, HENRY E. THETA
Phi Kappa Psi.
Mount Vernon, N. Y.
- BISLAND, JOHN BROWNSON GAMMA
Sigma Alpha Epsilon.
Lead, S. Dak.
- BLACKMAR, DON C. '12 BETA
Charlotte, Mich.
Asst. Chief. Engr. Magma Cop. Co., Superior, Ariz.

BLISS, JOHN LAWRENCE	Student	ZETA
Winfield, Kansas.		
BODMAN, RUSSELL JOHN	B. S. '13	ZETA
Sigmi Xi.		
9289 Hough Court, Cleveland, O.		
BOESCHE, JOHN P.	B. S. '12	ZETA
606 W. Main St., Chanute, Kan.		
BRADT, MAURICE L.	'16	BETA
935 S. 4th St., Saginaw, Mich.		
BRAUN, CARL AUGUST	'16	DELTA
823 N. Main St., Lima, O.		
BRETHERTON, SIDNEY ELLIOTT	'15	EPSILON
Zeta Psi.		
3006 Colby St., Berkeley, Calif.		
BRISTER, JR., CHARLES M.		THETA
Petersburg, Va.		
BROCKWAY, ALVAH E.	E. E. '09	ALPHA
Tau Beta Pi, Sigma Xi.		
McAlmon & Brockway, Phelan Bldg., San Francisco, Cal.		
BRODIE, JAMES S.	'13	ALPHA
260 Farrington Ave., St. Paul, Minn.		
Emerson-Brantingham Co., Minneapolis, Minn.		
BROOKE, LIONEL	Student	GAMMA
Kappa Sigma.		
Los Angeles, Calif.		
BROTHERTON, WILLIAM HENRY	Student	ETA
Phi Gamma Delta, Theta Nu Epsilon.		
Sta. A., Route 2, Dallas, Texas.		
BROWN, LONDON N.	'16	BETA
Springport, Mich.		
BROWN, NATHAN WALLACE	'15	ZETA
R. F. D. No. 4, Box 49, Lawrence, Kansas.		
BROWN, PERCY DALLAS	B. S. '09	BETA
Sigma Alpha Epsilon.		
617 N. 34th St., Philadelphia, Pa.		
Penn. R. R. Co., Philadelphia.		
BROWN, WALTER REGINALD	E. M. '10	GAMMA
Sigma Alpha Epsilon, Tau Beta Pi.		
Chief Engr. Nevada Consol. Copper Co., Ruth, Nev.		

BRYAN, RUSSELL R. E. Met. '08	GAMMA
Kappa Sigma.	
Hotchkiss, Colo.	
Chief Chemist, Utah Copper Co., Garfield, Utah.	
BUCK, FREDERICK WILLIAM M. E. '09	ALPHA
Phi Kappa Psi, Tau Beta Pi, Sigma Xi.	
1621 E. Superior St.	
Real Estate, Stryker Manley & Buck, Duluth, Minn.	
BUDDE, OTTO CARL B. S. '12	DELTA
Compton Rd., Clev. Heights, Cleveland, O.	
Teacher, East High School, Cleveland, O.	
BUDDLE, GEOFFREY ARMSTRONG '12	EPSILON
Tau Beta Pi, Sigma Xi.	
Morris Gardens, Cheyne Walk, Chelsea, S. W.	
BURKE, GILBERT MICHAEL B. S., E. M. '06	BETA
171 Main St., Canandagua, N. Y.	
Bullfrog Mining Co., Joplin, Mo.	
BURNS, JAY '15	GAMMA
Kappa Sigma.	
Franklin, Pa.	
BURRIS, JR., SAMUEL J. '15	GAMMA
Sigma Nu.	
Pueblo, Colo.	
BURT, CURTIS FAIRBAIRN B. S., E. M. '13	BETA
Highland Boy Mine, Utah Consol. Mining Co., Brigham, Utah.	
BURTON, WILLARD AGUSTUS '16	ZETA
Mound City, Kansas.	
BUSH, JR., JOHN C. '10	ALPHA
Sigma Chi.	
23—60th Ave. E., Duluth, Minn.	
Minn. Steel Co., Duluth, Minn.	
BUTLER, JOHN S. Student	ZETA
Keltz.	
5134 Wyandotte, Kansas City, Mo.	
BUWALDA, JOHN PETER B. S. '12	EPSILON
Sigma Alpha Epsilon, Beta Kappa Alpha, Sigma Xi.	
2519 Ridge Rd., Berkeley, Cal.	
CAINE, FREDERICK EARLE B. S., E. M. '12	DELTA
9151 Broadway, Cleveland, O.	
Caine Stone Co., Cleveland, O.	

CALLAHAN, THOMAS W. '14	GAMMA
Beta Theta Pi. Golden, Colo.	
CALVERT, CLARENCE EMMET E. M. '12	GAMMA
206 Church St., Whitewater, Wis. Britannia Mining & Smelting Co., Ltd., Britannia Beach, B. C.	
CAMERON, C. BURCH B. S., E. M. '10	BETA
Tau Beta Pi. Div. Engr., Box 113, T. C. I. & R. R. Co., Bes- semer, Ala.	
CAMPBELL, DONALD G.	THETA
Sigma Xi, Tau Beta Pi. Atlanta, Idaho.	
CAMPBELL, JR., MILTON KERR '13	EPSILON
Chi Psi, Tau Beta Pi. Claremont, Cal.	
CAMPION, HENRY H. B. S. '13	ZETA
Beta Theta Pi, Skull & K. Westinghouse Elect. Co., Wilksburg, Pa.	
CAPSER, LEO WOODS '15	ALPHA
Beta Theta Pi. 934 Portland Ave., St. Paul, Minn.	
CARLSON, ARTHUR EUGENE	BETA
417 5th Ave. E., Ashland, Wis. Theta Tau House, Houghton, Mich.	
CARPENTER, P. H. E. M. '10	GAMMA
Phi Delta Theta, Tau Beta Pi. Sharron, Pa. McGill, Nevada.	
CARROLL, WILLIAM F. B. S., E. M. '08	BETA
323 W. 59th St., Chicago, Ill.	
CASE, RAYMOND A. B. S., E. M. '12	BETA
Tau Beta Pi. 805 7th Ave. N., Great Falls, Mont. Investigator, B. & M. Reduction Dept. Anaconda Cop. Mng. Co.	
CHAFFIN, CHARLES EDWARD B. S., E. M. '13	BETA
Salt Lake City, Utah. Gen. Engr. Co., Superior, Ariz.	
CHANDLER, MALCOLM D. '09	ALPHA
Phi Kappa Psi. Cashier, Fruit Growers Bank, Payette, Idaho.	

CHAPMAN, WENDELL P. Student	ALPHA
Chi Rho Theta.	
Garden City, Minn.	
703 4th St. S. E., Minneapolis, Minn.	
CHESBRO, IVAN A. Student	BETA
Theta Tau House, Houghton, Mich.	
CHURCHILL, HARRY DEWARD '15	DELTA
Tau Beta Pi.	
808 N. Main St., Jamestown, N. Y.	
CLAPP, LEROY P. E. M. '08	GAMMA
Sigma Alpha Epsilon.	
Amal. Zinc Co., Broken Hill, N. S. W.	
CLARKE, JOHN CARLYLE '16	BETA
Earlville, N. Y.	
CLEVELAND, BLISS S.	ALPHA
319 14th Ave. S. E., Minneapolis, Minn.	
COATS, CHARLES M. B. S. '13	ZETA
321 S. Evergreen, Chanute, Kansas.	
United Verde Co., Jerome, Ariz.	
COBBAN, ROLLO E. E. '09	ALPHA
Tau Beta Pi.	
Luverne, Minn.	
Westinghouse E. & M. Co., Butte, Mont.	
COLES, HARRY LEEDS B. S. '13	EPSILON
257 Castro St., San Francisco, Cal.	
Pac. Tel. & Tel. Co., San Francisco, Cal.	
COLLER, WALTER A. Student	ALPHA
1149 Ashland Ave., St. Paul, Minn.	
COLLIER, LLOYD ALBERT Student	DELTA
Tau Beta Pi.	
2050 E. 93d St., Cleveland, O.	
COLLINS, GEORGE M. B. S. '11	EPSILON
Tau Beta Pi.	
Los Gatos, Cal.	
COLQUHOUN, W. W.	THETA
Alpha Delta Phi.	
Turnbridge Wells, England.	
COLVIN, JAMES A. '15	ALPHA
Tau Beta Pi.	
Sandstone, Minn.	

CONLEY, WILFRED EDMUND E. E. '10	ALPHA
Sigma Chi, Tau Beta Pi. 1644 E. 73d St., Cleveland O. Nat'l. Lamp Wks. of G. E. Co., Cleveland, O.	
COOK, WALLACE RONALD E. M. '10	BETA
Phi Kappa Sigma, Tau Beta Pi. Asst. Supt. Castile Mining Co., Wakefield, Mich.	
COPELAND, CLARENCE E. E. M. '13	GAMMA
Beta Theta Pi, Tau Beta Pi. Britannia Mining & Smelt. Co., Britannia Beach, B. C. Can.	
COTTON, C. W.	DELTA
2153 Fairmount Road, Cleveland, O.	
COUGHLIN, DANIEL EMMET Student	BETA
726 Water St., Hancock, Mich.	
COUNTRYMAN, RALPH B. S. '11	EPSILON
Theta Delta Chi. 653 Chetwood St., Oakland, Cal. Metallurgist, Mammoth Copper Mng. Co., Ken- nett, Cal.	
COWIN, JAMES E. M. '07	ALPHA
Chi Psi. Engr. C. A. P. Turner, Winnipeg, Man., Canada.	
CRABB, JAMES MOOREY E. M. '09	BETA
125 Mass. Ave., Detroit, Mich. Draft. City Engr. Off., Detroit, Mich.	
CRAIG, ERIC K. Student	EPSILON
Sigma Nu. 55 Craig Ave., Piedmont, Cal.	
CRAMER, CHARLES F. '16	BETA
227 Michigan St., Toledo, O.	
CROCKER, BERTRAM ERWIN '11	BETA
311 E. "C" St., Iron Mt., Mich. Engr. Inspiration Cons. Copper Co., Miami, Ariz.	
CRUTCHER, E. R. Student	GAMMA
Sigma Alpha Epsilon. Salida, Colo.	
CURTIS, BENJAMIN JOHN B. S. '13	ALPHA
Delta Tau Delta. Fairmont, Minn.	
CURTIS, LEROY PERCY E. M. '08	GAMMA
Kappa Sigma. Littleton, Colo. Supt. Mosida Fruit Lands Co., Provo, Utah.	

CURTIS, THOMAS H. C. E. '12	ALPHA
Delta Tau Delta.	
Fairmont, Minn.	
Box 1154, Helena, Mont.	
CURTISS, LINDSLEY B. B. S. '09	ALPHA
Sigma Alpha Epsilon.	
1073 Edmund St., St. Paul, Minn.	
Struct. Engr., 501 N. P. Bldg., St. Paul, Minn.	
CUTLER, JR., FRED ABBOTT '17	ALPHA
Psi Upsilon.	
629 E. 19th St., Minneapolis, Minn.	
DALLIMORE, ARTHUR N. C. E. '08	ALPHA
Union Concrete & Bridge Co., Fowler, Colo.	
DAVID, JOE '13	BETA
163 Pine St., Muskegon, Mich.	
Veteran Mine, Kimberley, Utah.	
DAVIS, ELMER FRED B. S. '10	EPSILON
Sigma Xi, Tau Beta Pi, Phi Lambda Upsilon.	
2644 Dwight Way, Berkeley, Cal.	
Instructor, U. of Cal.	
DAVIS, GILMORE SHERWIN Student	GAMMA
Sigma Alpha Epsilon.	
321 Maple St., Trinidad, Colo.	
DAVIS, SHERWIN BENNETT B. S. '12	EPSILON
Sigma Chi, Tau Beta Pi, Sigma Xi.	
R. F. D. No. 1, Box 44 B, Napa, Cal.	
Mining, Eureka, Utah.	
DE CAMP, W. V. E. M. '08	GAMMA
Tau Beta Pi.	
Yovopai Club, Prescott, Ariz.	
Gen. Mgr., Pacific Copper Co., Crown King, Ariz.	
DE LAITRE, HORACE H. Student	GAMMA
Delta Tau Delta.	
2647 Lyndale Ave. N., Minneapolis, Minn.	
DE VEY, CHARLES H. '16	ALPHA
Chi Psi.	
804 E. 3d St., Duluth, Minn.	
DICK, JAMES E. '12	GAMMA
Sigma Alpha Epsilon.	
667 W. Market St., Akron, O.	
DICKEL, ARNOLD CLEMENS Student	EPSILON
Sigma Phi Epsilon.	
Anaheim, Cal.	

DIEMER, CLARENCE PETER	Student	DELTA
Tau Beta Pi. 6409 St. Clair Ave., Cleveland, O.		
DILLINGHAM, GEORGE BURGER	B. S. '10	EPSILON
Phi Delta Theta. Gen. Mgr. San Vicente Mining Co., 812 Crocker Bldg., San Francisco, Cal.		
DINGMAN, OSCAR ALDRICH	'14	ZETA
3926 Manheim Rd., Kansas City, Mo.		
DITTUS, EDWARD J.	E. Met. '11	GAMMA
Phi Kappa Psi. Instructor Colo. School of Mines; Asst. Mgr. C. S. M. Test Plant, Golden, Colo.		
DOBSON, DELOS I.	'16	BETA
33 Colo. Ave., Detroit, Mich.		
DODD, LESLIE H.	'14	ZETA
Langdon, Kansas.		
DODGE, JR., DAVID C.	'15	GAMMA
Beta Theta Pi. Golden, Colo.		
DOPP, J. LAWRENCE	Student	ALPHA
Sigma Alpha Epsilon. 719 Ellis Ave., Ashland, Wisc.		
DORR, WILLIAM RIPLEY	Student	ALPHA
Chi Psi, Mu Phi Delta. 598 Lincoln Ave., St. Paul, Minn.		
DOUGLAS, WILLIAM C.	E. M. '11	GAMMA
Sigma Alpha Epsilon. 676 W. 8th St., Plainfield, N. J.		
DOWNING, ROBERT LEE	B. S., E. M. '06	BETA
Hibbing, Minn. Supt. Bennett Mine, Keewatin, Minn.		
DRAKE, MORRIS CLAIRE	Student	BETA
342 E. Hewitt Ave., Marquette, Mich.		
DUNCAN, KENNETH J.	E. M. '10	ALPHA
Tau Beta Pi. 806 4th St. S. E., Minneapolis, Minn. Representing R. B. Whiteside's Mng. Interests, Box 165, Hibbing, Minn.		
DUNHAM ROY OWEN	Student	ALPHA
Lakeville, Minn.		

DUNN, JAMES L.	Student, McGill	GAMMA
	Delta Kappa Epsilon.	
	66 McTavish St., Montreal, Quebec, Canada.	
DU TOIT, JR., GEORGE A.	M. E. '10	ALPHA
	Beta Theta Pi.	
	1928 Portland Ave., Minneapolis, Minn.	
	Asst. Purch. Agt. Mpls. Steel & Machinery Co., Minneapolis, Minn.	
DYER, CHARLES E.	E. M. '10	GAMMA
	Tau Beta Pi.	
	Golden, Colo.	
DYRENFORTH, DONALD	E. M. '12	GAMMA
	Sigma Alpha Epsilon.	
	115 Maple Ave., Oak Park, Ill.	
	White Pine, Colo.	
EARLING, ROY BROWN	B. S., E. M. '08	BETA
	Tau Beta Pi.	
	Seattle, Wash.	
	Effic. Engr. Arizona Cop. Co. Ltd., Metcalf, Ariz.	
EAST, JR., J. H.	E. M. '10	GAMMA
	1137 Vine St., Denver, Colo.	
	Owl Creek Coal Co., Gebo, Wyo.	
EATON, ARTHUR	B. S. '13	EPSILON
	Phi Kappa Sigma, Tau Beta Pi, Sigma Xi.	
	State Expo. Bldg., Los Angeles, Cal.	
EDGERTON, RALPH E.	'07	ALPHA
	Sigma Alpha Epsilon.	
	431 S. Huron St., Sandpoint, Idaho.	
EDWARDS, JOHN GARDNER	B. S., E. M. '13	BETA
	119 College Ave., Houghton, Mich.	
EDWARDS, HARRY RICE		BETA
	Died April 27, '13, Silver City, N. M.	
EIDEMILLER, HOWARD N.	Student	ALPHA
	Zeta Psi.	
	432 Dewey Ave., St. Paul, Minn.	
EISENHAUER, RANDOLPH CHURCHILL	Student	
	Pi Kappa Alpha.	EPSILON
	Boston, Mass.	
	2646 Dwight Way, Berkeley, Cal.	
ELDER, ROBERT B.	E. Met. '08	GAMMA
	Kappa Sigma, Tau Beta Pi.	
	55 W. Ellsworth, Denver, Colo.	
	Chicksaw Mines, Chosen, Korea.	

ELFSTRUM, A. E. C. E. '11	ALPHA
Willmar, Minn.	
1318 Maryland St., Los Angeles, Cal.	
ELLIOTT, GORDON DOVER B. S., E. M. '12	BETA
Box 819, Globe, Arizona.	
Chem. Gibson Cop. Co., Bellevue, Ariz.	
ELLIS, BRUCE BONTHRON C. E. '08	ALPHA
Sigma Chi.	
Supt. E. J. Longyear Co., Houghton, Mich.	
ENGLISH, WALTER ATHELING B. S., M. S. '10	EPSILON
Theta Chi.	
2414 Dana St., Berkeley, Cal.	
U. S. G. S., Washington, D. C.	
ESSIG, BENJAMIN C. '15	GAMMA
Kappa Sigma.	
Oworso, Mich.	
EVANS, CARL WATSON '11	BETA
Houghton, Mich.	
Ariz. Cop. Co., Clifton, Arizona.	
EVERHEART, ERNEST B. S. '08	BETA
644 N. Crockett St., Sherman, Tex.	
Mineral El Salado, San Juan, Rep. De Argentina,	
So. America.	
FAIRCHILD SAMUEL G. Student	ZETA
Sigma Alpha Epsilon.	
551 Sherman, E. Hutchinson, Kansas.	
FARNAM, JULIAN P. M. E. '11	ALPHA
Psi Upsilon.	
1927 Hennepin Ave., Minneapolis, Minn.	
FEELY, JR., JOHN CORNELIUS '14	EPSILON
Sigma Alpha Epsilon, Tau Beta Pi.	
East Auburn, Cal.	
FELLMAN, CARL MARIUS E. M. '11	BETA
518 3d St., Marquette, Mich.	
Engr. Castile Mining Co., Ramsay, Mich.	
FERRIS, ALBERT LARUE E. M. '11	BETA
514 Elizabeth St., Petoskey, Mich.	
Engr. Shannon Mine, Metcalf, Ariz.	
FICK, OTTO WILHELM Student	ETA
1528 Hood Ave., Chicago, Ill.	
109 Warren Ave., Boston, Mass.	

FIELDS, HOWARD HAWTHORNE	B. S., E. M. '13	Alpha, BETA
Chi Psi.		
4409 Queen Ave. S., Minneapolis, Minn.		
Engr. Utah Cons. Mining Co., Bingham Can., Utah.		
FISKE, CHARLES PARKER	Student	ETA
Delta Tau Delta.		
99 Aspen Ave., Auburndale, Mass.		
234 Newbury St., Boston, Mass.		
FLETCHER, RALPH LESLIE		ETA
Sigma Alpha Epsilon.		
109 Parade St., Providence, R. I.		
FLINN, ALFRED	'13	GAMMA
Kappa Sigma.		
1715 E. Superior St., Duluth, Minn.		
FOARD, MERLIN WILEY	'12	BETA
309 E. Spruce St., Sault St. Marie, Mich.		
Maggie Mine, Algoma Steel Corp., Ontario, Can.		
FORBES, HENRY HOOKER	'13	GAMMA
Phi Delta Theta.		
12 High St., Westboro, Mass.		
FORTUNE, FRANK G.	Student	DELTA
Jefferson, Ohio.		
2180 Cornell Road, Cleveland, O.		
FOX, MILO P.	'10	ALPHA
Sigma Chi.		
Mankato, Minn.		
Ft. Leavenworth, Kansas.		
FRASER, DONALD DICKINSON	'14	BETA
8 Hamilton St., Johnstown, N. Y.		
FREMERY, DONALD DE	'15	ETA
Psi Upsilon.		
77 Fairmount Ave., Oakland, Cal.		
FRICK, F. F. E. M.	'08	GAMMA
Peru, Indiana.		
Anaconda Smelting Co., Anaconda, Mont.		
FRISBIE, DONALD BALDWIN	B. S. '11	DELTA
1031 W. Woodruff Ave., Toledo, O.		
Frisbie-Morgan Coal Co., Toledo, O.		

FRITCH, GEORGE '11	GAMMA
Sigma Nu.	
539 Jefferson St., Milwaukee, Wis.	
Sec. & Treas., The Efaness Mfg. Co., Milwaukee, Wis.	
FUGMAN, VICTOR CHARLES B. S. '10	DELTA
Zeta Psi, Tau Beta Pi, Sigma Xi.	
Ambler Heights, Cleveland, O.	
Nat'l. Lamp Ass'n.	
FURBER, PIERCE POWERS C. E. '08	ALPHA
Sigma Alpha Epsilon.	
4517 Dupont Ave. S., Minneapolis, Minn.	
Chgo. Rep., C. A. P. Turner, 8 S. Dearborn, Chicago, Ill.	
GARNETT, THOMAS HERNDON E. M. '11	GAMMA
Sigma Nu.	
1315 Court St., Pueblo, Colo.	
Empire Zinc Co., Arden, Nev.	
GEIB, GEORGE A.	ALPHA
770 Como Blvd., St. Paul, Minn.	
GEIGER, CHARLES T.	ZETA
Sigma Alpha Epsilon.	
730 S. Main St., Ottawa, Kan.	
GEIS, WILFRED H. '15	EPSILON
Phi Sigma Kappa.	
147 Merrill Ave., Willows, Cal.	
GESTER, STEPHEN HOWELL B. S. '13	EPSILON
2800 Derby St., Berkeley, Cal.	
Geol. So. Pac. R. R. Co.	
GESTER, GEORGE CLARK B. S. '09	EPSILON
Sigma Xi, Mim Kaph Mim.	
2800 Derby St., Berkeley, Cal.	
Geologist, So. Pacific R. R. Co.	
GIBBS, FRED Student	BETA
Tau Beta Pi.	
Houghton, Mich.	
GIBSON, ALGERNON TUTTLE '13	ETA
Alpha Delta Phi, Theta Nu Epsilon.	
26 Myrtle St., Jamaica Pl., Mass.	
GILCHRIST, ARCH '13	BETA
Delta Tau Delta, Tau Beta Pi.	
1206 E. River St., Davenport, Ia.	
Theta Tau House, Houghton, Mich.	

GILTINAU, DAVID MURRAY '15	ALPHA
Delta Upsilon.	
217 Harvard St., Minneapolis, Minn.	
GLASGOW, C. W. E. M. '10	GAMMA
Phi Delta Theta.	
4371 Washington Ave., St. Louis, Mo.	
GOETZENBERGER, RALPH LEON Student	ALPHA
Psi Upsilon.	
2621 Emerson Ave. S., Minneapolis, Minn.	
GOODWIN, GUY LEONARD B. S. '10	EPSILON
Phi Kappa Psi.	
Santa Maria, Cal.	
GOFF, JAMES COLLORD '13	ETA
Delta Upsilon.	
Grafton, Pa.	
GOULD, EDGAR HAROLD B. S., E. M. '11	BETA
Phi Mu Alpha.	
Battle Creek, Mich.	
Min. Engr., Osceola Consol. Mng. Co., Calumet, Mich.	
GRAHAM, ERNEST R. B. S., E. M. '07	BETA
Tau Beta Pi.	
Croswell, Mich.	
Supt. Mogul Mng. Co., Terry, S. Dak.	
GRANFIELD, THOMAS HENRY Student	ALPHA
Phi Sigma Kappa.	
27 W. Housatonic St., Pittsfield, Mass.	
820 University Ave. S. E., Minneapolis, Minn.	
GRAYBEAL, EDWARD V. '14	GAMMA
Sigma Nu.	
De Beque, Colo.	
GREENSLADE, RUSSELL MALLAND '16	DELTA
Bellevue, O.	
GRYGLA, EUGENE E. '08	ALPHA
Chi Psi.	
Santa Fe, Cal.	
No. 142, Manhattan, Nevada.	
HADSELL, IRVING W.	THETA
99 Claremont Ave., N. Y., N. Y.	
HAEBERLE, CARL FREDRICK B. S. '11	DELTA
Zeta Psi.	
1625 E. 49th St., Cleveland, O.	
Chem. Grasselli Chem. Co., Cleveland, O.	

HAGLIN, JR., CHARLES F.	Student	ALPHA
Psi Upsilon.		
Haglin-Stahr Co., Hotel Plaza, Minneapolis, Minn.		
HALL, DURAND A.	Student	BETA
Zeta Psi (Williams College).		
Deerwood, Minn.		
304 Florence St., Houghton, Mich.		
HANKS, ISAAC BAKER	'07	ALPHA
Delta Tau Delta.		
Supt., Security Lbr. Co. Ltd., Moose Jaw, Sask., Can.		
HANSEN, GEORGE PETER	'13	DELTA
8815 Walker Ave., Cleveland, O.		
Central Furn., Am. Steel & Wire Co., Cleveland, O.		
HARRIS, ALFRED	'16	ZETA
Phi Delta Theta.		
Emporia, Kansas.		
HARRIS, WILLIAM JAMES	'13	BETA
1212 Holland Ave., Saginaw, Mich.		
Theta Tau House, Houghton, Mich.		
HARTLEY, WILL TOMLINS	B. S. '11	DELTA
1243 Cook Ave., Lakewood, O.		
Chem. Atlas Crucible Steel Co., Dunkirk, N. Y.		
HARTMAN, LEON R.	'14	ALPHA
Zeta Psi.		
Rank & Goodell, 801 Pioneer Bldg., St. Paul, Minn.		
HARVEY, JOHN VICTOR	E. M. '11	GAMMA
Sigma Alpha Epsilon.		
1201 18th St., Sioux City, Iowa.		
Mng. Engr., Peregrina M. & M. Co., Apartado No. 25, Guauajuato, Mexico.		
HASSE, ALBERT CHARLES	B. S. '10 (Mng.)	DELTA
3352 W. 25th St., Cleveland, O.		
Student, Cleveland Law School.		
HASSELBRING, ALBRECHT	E. M. '06	BETA
Flint, Mich.		
Gen. Supt., Lake Superior Corp., Magpie Mine.		
Ont. Can.		
HAUG, EDWARD JOSEPH	'09	BETA
Sigma Phi.		
Houghton, Mich.		
Shannon Copper Co., Metcalf, Ariz.		

HAUSER, KENNETH DUNCAN	C. E. '11	ALPHA
Delta Tau Delta.		
827 Mound Ave., St. Paul, Minn.		
Engr. Hauser & Foley, Ry. Contrs.		
HAUSER, R. V.	B. S. '10	ALPHA
Delta Tau Delta.		
827 Mound Ave., St. Paul, Minn.		
Engr. Hauser & Foley, Ry. Contrs.		
HAYNES, JACK ELLIS	B. A. '08	ALPHA
Beta Theta Pi.		
1787 Hague Ave., St. Paul, Minn.		
Supt. Haynes Studios, St. Paul and Yellowstone Park.		
HAYNES, STANLEY HEWITT	Student	ALPHA
Chi Psi.		
703 River Rd., E. Minneapolis, Minn.		
HEENA, CARL RAYMOND	'17	DELTA
721 Ridge Road, Bowling Green, O.		
HEGEMAN, ALANSON KERR	'14	EPSILON
Chi Psi, Tau Beta Pi.		
251 W. 92d St., New York, N. Y.		
HEINE, BERNHARDT E.	Student	BETA
126 Market St., Mt. Clemens, Mich.		
Theta Tau House, Houghton, Mich.		
HELLBERG, EDWARD ADOLPH	B. S., E. M. '10	BETA
Asst. Mng. Engr. Oliver I. M. Co., Norway, Mich.		
HELMICK, DON S.	'16	ALPHA
Zeta Psi.		
1014 13th Ave. S. E., Minneapolis, Minn.		
HENDRICKS, JOHN ABRAM	'14	EPSILON
Phi Sigma Kappa.		
126 S. Freemont Ave., Los Angeles, Cal.		
HERMANN, CHARLES FREDRICK	B. S., M. '06	BETA
Died Oct. 31, 1909, at Hibbing, Minn.		
HERON, CHARLES M.	B. S. '11	EPSILON
Phi Kappa Sigma.		
2426 Virginia St., Berkeley, Cal.		
El Tigre Mng. Co., Ysabel, Sonora, Mex.		
HERRES, JR., OTTO E.	M. '11	GAMMA
1728 Race St., Denver, Colo.		
Asst. Engr. Utah Fuel Co., Castle Gate, Utah.		
HESTON, ROBERT PERRY	Student	DELTA
2224 Rosewood Ave., Toledo, O.		
1952 E. 116th St., Cleveland, O.		

HEWETT, MAURICE W.	Student	ALPHA
Phi Sigma Kappa, Tau Beta Pi.		
4602 Dupont Ave. S., Minneapolis, Minn.		
HICKS, BERT REED	B. S., E. M. '08	BETA
Died March 25, 1912, China.		
HICKS, FRANK V.	'15	BETA
Tau Beta Pi.		
Edwardsburg, Mich.		
HICKS, LUTHER REUBEN	'13	BETA
Died May 4, 1912 at Oshkosh, Wis.		
HIGH, RALPH B.	B. S. '11	EPSILON
Phi Kappa Psi.		
406 Van Buren Ave., Oakland, Cal.		
Cal. Oilfields Ltd., Oilfields, Cal.		
HILL, CHARLES RANSOM	Ex. Gamma	ETA
Delta Psi, Tau Beta Pi.		
Care of Livingston Platt, 2 Rector St., New York, N. Y.		
HILL, A. STANLEY	E. M. '11	ALPHA
Psi Upsilon.		
3324 Colfax Ave. So., Minneapolis, Minn.		
Box 102, Gem, Idaho.		
HILSDALE, PAUL	'12	GAMMA
Phi Gamma Delta, Tau Beta Pi.		
Sauk Center, Minn.		
HINCKLEY, PAUL EUGENE	Student	BETA
312 W. Lovell St., Kalamazoo, Mich.		
Theta Tau House, Houghton, Mich.		
HINCKLEY, THOMAS LESLEY	B. S. '06 M. I. T.	
Hon. ALPHA		
17 Gramercy Pk., New York, N. Y.		
Director of Research, Westchester Co., Research		
Bureau, 15 Court St., White Plains, N. Y.		
HOAG, CLIFFORD	B. S., E. M. '13	BETA
St. Johns, Mich.		
Shannon Cop. Co., Metcalf, Ariz.		
HOFFMAN, RALPH N.		ZETA
Parsons, Kas.		
1333 Kentucky, Lawrence, Kan.		
Chiquiacamata, Chile, via Antofagasta.		
HOLMAN, WM. F.	B. S., M. A. Ph.D.	Hon. ALPHA
Phi Gamma Delta.		
Professor, U. of M., Minneapolis, Minn.		

HOOD, KARL KEDZIE	B. S., E. M. '12	BETA
Braddock & Waverly Sts., Pittsburgh, Pa.		
Chief Engr., Doe Run Lead Co., Rivermines, Mo.		
HOPKINS, JR., HERMAN HALSEY	B. S., E. M. '08	BETA
Sec. H. H. Hopkins Co., 164 N. Dearborn St., Chicago, Ill.		
HOPKINS, H. H.		BETA
800 Church St., Flint, Mich.		
HOSTETLER, CURTIS B.	E. M. '13	ZETA
Alpha Tau Omega.		
Box 211, Morenci, Arizona.		
HOUGHTALING, ELTING WADE		ALPHA
Phi Gamma Delta.		
316 Albion Ave., Fairmont, Minn.		
HOUSTON, FRED KENNEDY	E. M. '05	BETA
160 E. 3d St., Beaver, Pa.		
Box 865, Helena, Mont.		
HUDSON, FRANK SAMUEL	B. S. '11	EPSILON
Phi Gamma Delta, Sigma Xi, Theta Nu Epsilon.		
2735 Derby St., Berkeley, Cal.		
Geol. So. Pac. Co., 712 Flood Bldg., San Francisco, Cal.		
HUDSON, W. E.		GAMMA
Golden, Colo.		
HUGHES, WILLIAM LEWIS	Student	BETA
2207 E. 89th St., Cleveland, O.		
HUNT, JAMES LEE	'16	ZETA
28 N. Boeke, Kansas City, Kan.		
HURLBUTT, FREDERICK LEWIS	Student	ETA
Kappa Alpha.		
548 Potomac Ave., Buffalo, N. Y.		
16 Westland Ave., Boston, Mass.		
HURLEY, JOHN J.	E. M. '11	ALPHA
Pine City, Minn.		
366 Nelson Ave., St. Paul, Minn.		
JAKES ROBERT C. E.	'09, LL.B. '12	ALPHA
Sigma Chi, Phi Delta Phi.		
Lawyer, 411 Lonsdale Bldg., Duluth, Minn.		
JEROME, FRANK JAY	Student A. B. '11	ETA
Painesville, O.		
32 Westland Ave., Boston, Mass.		

JEVNE, GEORGE W. C. E. '10	ALPHA
Phi Sigma Kappa.	
2441 Elliot Ave. S., Minneapolis, Minn.	
Dist. Engr. C. A. P. Turner, Union Nat'l. Bank Bldg., Houston, Tex.	
JOHNSON, PAUL ARTHUR B. S. E. '11	ALPHA
Sigma Alpha Epsilon.	
Johnson Construction Co.	
624 Plymouth Bldg., Minneapolis, Minn.	
JOHNSON, PHILIP LAWRENCE Student	ALPHA
Sigma Alpha Epsilon.	
2911 Lyndale Ave. N., Minneapolis, Minn.	
JOHNSTON, FRED E. B. S. '12	ZETA
Madison, Kan.	
1001 N. 6th St., Ft. Smith, Ark.	
JONES, E. F. E. M. '10	GAMMA
Las Esperanzas, Coahuila, Mexico.	
Engr. Cia C. A. y A., Zampacitos, Mexico.	
JONES, WATKINS W. E. E. '11	ALPHA
Asst. Supt. Consol. Fuel Co., Hiawatha, Utah.	
KASPER, WALTER F. M. E. '11	ALPHA
Phi Gamma Delta.	
Box 11, Fairmont, Minn.	
Fairmont Machine Co.	
KENDALL, ARTHUR '15	BETA
Hancock, Mich.	
KENNEDY, JOHN J. E. M. '08	ALPHA
Psi Upsilon.	
436 Iglehart Ave., St. Paul, Minn.	
Tuscon Mines Devel. Co., Box 538, Tuscon, Ariz.	
KERR, JOHN BOZMAN '14	EPSILON
2428 Hillside Ave., Berkeley, Cal.	
KESNER, HENRY JAMES Col. '05, B. A., B. S., C. E.,	Hon. ALPHA
Beta Theta Pi, Phi Beta Kappa, Sigma Xi, Tau Beta Pi.	
Asst. Prof., Civ. Engr., U. of Cal., Berkeley, Cal.	
KEW, WILLIAM S. W. '12	EPSILON
Alpha Tau Omega, Beta Kappa Alpha, Sigma Xi.	
6th and Spruce Sts., San Diego, Cal.	
KILBOURN, BURWELL NEWTON	GAMMA
Sigma Nu, Theta Nu Epsilon.	
1124 Court St., Pueblo, Colo.	
Box 451, Tooele, Utah.	

-
- KILGOUR, MARTIN HAMILTON A. C. G. I. (London)
E. M. '08 GAMMA
Can. Bank of Commerce, 16 Exchg. Pl., N. Y.,
N. Y.
Consulting Engineer.
- KING, ROWLAND B. '16 BETA
Care of C. M. Fassett Co.
209 Wall St., Spokane, Wash.
- KINGSLEY, NEIL S. E. M. '11 ALPHA
Delta Tau Delta.
1009 Univ. Ave. S. E., Minneapolis, Minn.
Lab. Asst., Mine Exp. Sta., U. of M., Minneapolis,
Minn.
- KINGSTON, CARL JOHN '06 BETA
Central Mine, Mich.
Cerro de Pasco Mng. Co., Cerro de Pasco, Peru,
S. A.
- KINNEAR, LAWRENCE WILSON Student ZETA
Beta Theta Pi.
137 Riverside Drive, N. Y., N. Y.
1537 Tenn. St., Lawrence, Kan.
- KIRCHMAN, ROBERT INGERSOLL E. M. '08 GAMMA
Kappa Sigma, Tau Beta Pi.
Kappa Sigma House, Golden, Colo.
Box 55, Mongollon, N. Mex.
- KIRKPATRICK, MARSENA RICHARD E. M. '07 BETA
Bellingham, Wash.
713 8th Ave., Seattle, Wash.
- KISSOCK, ALAN '12 GAMMA
Sigma Alpha Epsilon.
79 Wall St., New York, N. Y.
- KLEPETKO, ERNEST B. S., E. M. '11 BETA
Alpha Delta Phi.
614 W. 113th St., New York, N. Y.
- KLINE, ALLEN HAROLD Student DELTA
R. F. D. No. 3, Youngstown, O.
2054 E. 115 St., Cleveland, O.
- KLINE, ZENAS CLYDE B. S. '10 DELTA
Sigma Xi, Tau Beta Pi.
Girard, O.
Natl. Elect. Lamp Ass'n., Pawtucket, R. I.
- KNOWLTON, HERBERT H. C. E. '08 ALPHA
Sigma Xi.
351 Ry. Exchg. Bldg., Denver, Colo.

- KOEHLER, CARL FREDERICK B. S. '09 DELTA
Theta Nu Epsilon.
Willys-Knight Co., Elyria, O.
- KOENIG, GEORGE AUGUSTUS M. E., A. M., Ph.D.,
E. M. Hon. BETA
Died Jan. 14, 1913, at Philadelphia, Pa.
- KOONTZ, KINTER KENNETH B. S., E. M. '08 BETA
542 Central Ave., Johnstown, Pa.
Capitol Bldg., Phoenix, Arizona.
- KOPFER, JR., EDWARD Student ALPHA
Psi Upsilon.
438 Portland Ave., St. Paul, Minn.
- KRATZ, ARTHUR MURRAY B. S. '05 BETA
23 Charles St., Calumet, Mich.
Box 149, Johannesburg, South Africa.
- KRUGER, HERMAN A. E. M. '09 GAMMA
Beta Theta Pi, Tau Beta Pi.
Box 1336, Denver, Colo.
611 Pac. Elect. Bldg., Los Angeles, Cal.
- KRUSCHKE, GEORGE A. E. E. '09 ALPHA
410 3d Ave. N., Minneapolis, Minn.
Con. Agt. Gen. Elect. Co., Minneapolis, Minn.
- KRUSE, HELMER VICTOR ALPHA
Tau Beta Pi.
513 4th Ave. S. E., Minneapolis, Minn.
- KUMKE, CHARLES AUGUST E. M. '06 BETA
35 Humboldt Ave., Detroit, Mich.
United Verde Copper Co., Jerome, Ariz.
- KUZELL, CHARLES RAPHAEL B. S. '10 DELTA
Tau Beta Pi, Pick & Shovel.
Investigator: Anaconda Copper Mining Co., B. &
M. Reduction Dept., Great Falls, Mont.
- LADD, GREELEY '13 ALPHA
Phi Gamma Delta.
1129 University Ave. S. E., Minneapolis, Minn.
- LANNON, JAMES A. '11 GAMMA
Sigma Alpha Epsilon, Tau Beta Pi, Kappa Beta
Phi.
1024 N. Main St., Pueblo, Colo.
Midas Gold Mng. Co., Knob, Shasta Co., Cal.

LARKIN, ARTHUR EDWARD '08	ALPHA
Beta Theta Pi.	
59 Williams Ave. S. E., Minneapolis, Minn.	
Mgr. and Gen. Supt. Republic Creosoting Co., Minneapolis, Minn.	
LAVAN, THOMAS JOSEPH	DELTA
2038 E. 65th St., Cleveland, O.	
LAWSON, ANDREW WERNER	EPSILON
Phi Kappa Sigma, Mim Kaph Mim.	
1515 La Loma Ave., Berkeley, Cal.	
LEACH, EDWARD W. C. E. '10	ALPHA
Winona, Minn.	
Butler Bros., Contrs., Buhl, Minn.	
LEEK, LAWRENCE VANDER '15	EPSILON
San Juan, Capistrano, Cal.	
LEE, LELAND V.	THETA
Delta Tau Delta.	
Monterey, Mex.	
LESH, H. B. E. M. '10	GAMMA
Sigma Nu.	
909 West End Ave., New York, N. Y.	
Cerro de Pasco Mng. Co., Cerro de Pasco, Peru, S. A.	
LESLIE, FREELAND HUSTON A. B. '12, Harvard '14	ETA
44 Randolph Ave., Milton, Mass.	
LEWIS, JOHN WHITNEY E. M. '12	ALPHA
Psi Upsilon.	
Care Gen. Andrews, Barbara Asphalt Co., Philadelphia, Pa.	
Field Geol. Carribbion Petroleum Co., Venezuela.	
Care Am. Savings Bank, Los Angeles, Cal.	
LEWIS, W. MURRAY E. M., E. Met. '09	Ex Alpha
642 Portland Ave., St. Paul, Minn.	GAMMA
Stone & Webster, Bristol, Conn.	
LITCHFIELD, RUFUS EARL Student	GAMMA
Sigma Alpha Epsilon.	
Arlington St., Fitchburg, Mass.	
LOEFFLER, HENRY STANLEY '14	ALPHA
1014 13th Ave. S. E., Minneapolis, Minn.	

- LONGAN, WALTER BOWLES B. S., E. M. '08 BETA
924 E. 29th St., Kansas City, Mo.
Box 955, Nowata, Okla.
- LORD, CHARLES ROGERS '16 ETA
Delta Kappa Epsilon, Theta Nu Epsilon.
Claremont St., Newton, Mass.
- LOUDERBACK, GEORGE D. A. B., Ph.D. Cal. '96 EPSILON
Phi Kappa Sigma, Phi Beta Kappa, Sigma Xi, Tau
Beta Pi.
2713 Derby St., Berkeley, Cal.
Geologist and Assoc. Prof. of Geol., U. of Cal.
- LOVELAND, RALPH ANDRUS Student BETA
1220 S. Jefferson Ave., Saginaw, Mich.
Theta Tau House, Houghton, Mich.
- LOWELL, JAMES B. E. M., E. Met. '08 GAMMA
Phi Gamma Delta, Tau Beta Pi.
24 Brattle St., Worcester, Mass.
Supt. Geo. A. Fuller Co., 131 State St., Boston,
Mass.
- LUCE, EARLE P. '10 BETA
1028 5th Ave., Grand Rapids, Mich.
Res. Eng. St. Bernard, La., care Jno. A. Kruse
Engr. Co., 916 Hibernia Bank Bldg., New Or-
leans, La.
- LUKE, RUSSELL P. Student GAMMA
Sigma Nu.
Kingston, Pa.
Sigma Nu House, Golden, Colo.
- LUND, N. J. B. S. '11 EPSILON
3016 Hillegass Ave., Berkeley, Cal.
Mngr. Central Creameries, Cambria, S. L. O. Co.,
Cal.
- LUTZ, RICHARD EUGENE Student ALPHA
Chi Psi.
Mantorville, Minn.
1515 University Ave. S. E., Minneapolis, Minn.
- MACINNES, GEORGE RAYMOND '15 DELTA
6206 Wakefield Ave., Cleveland, O.
- MACKILLICAN, JAMES ANGUS B. S. '06 BETA
330 Oak St., Escanaba, Mich.
Asst. Supt. of Inspect. Meriden Iron Co., Hib-
bing, Minn.

MAHONEY, WM. L. '14	ALPHA
508 4th St. N. E., Minneapolis, Minn.	
MAIN, WALTER COURTNEY '17	DELTA
1605 E. 82d St., Cleveland, O.	
MALM, ROYAL DINSMORE B. S. '12	DELTA
1448 E. 115th St., Cleveland, O.	
Chief Engineer, Rutland Ry., Light & Power Co., Rutland, Vt.	
MANGELSDORF, ALBERT HENRY E. M. '12	ZETA
Alpha Tau Omega.	
1100 Santa Fe St., Atchison, Kan.	
MARSHALL, EMORY M. E. M. '11, M. S. '12	GAMMA
Phi Gamma Delta.	
1210 8th St., Des Moines, Ia.	
Miami, Ariz.	
MARSHALL, GEORGE BOWEN B. S., E. M. '07	BETA
442 E. 136th St., New York, N. Y.	
Supt. Mina La Union, Miramar, Costa Rica, C. A.	
MATCHETT, HENRY J. '14	ALPHA
1416 Capitol Ave., St. Paul, Minn.	
Dawson City, Yukon Terr., Canada.	
Five Fingers Coal Co.	
MATHESON, K. H. E. M. '11	GAMMA
Kappa Sigma.	
Hugo, Colo.	
N. Y.—Honduras Rosario Mng. Co., San Juacito, Honduras.	
MAY, JR., A. J. '12	GAMMA
Golden, Colo.	
Harley, N. Mexico.	
MCCARTHY, CHARLES F.	THETA
Beta Theta Pi.	
Denver, Colo.	
MCCUNE, MALCOLM '15	ZETA
Leavenworth, Kansas.	
MCENARY, DALE ROBERT Student ex Alpha Eta	
Alpha Delta Phi.	
2324 Pleasant Ave. S., Minneapolis, Minn.	
32 Westland Ave., Boston, Mass.	
MCGINNIS, WILLIAM H. C. E. '10	ALPHA
Delta Tau Delta.	
245 Buchanan St., San Francisco, Cal.	
Tucker & O'Brien, 112 Market St. (Same.)	

McGUIRE, PHILIP J. Student	GAMMA
Kappa Sigma.	
555 Humboldt St., Denver, Colo.	
Kappa Sigma House, Golden, Colo.	
McHUGH, PHILLIP M. E. M. '11	GAMMA
Sigma Alpha Epsilon.	
Min. Engr. Dorr Cyanide Mach. Co., Denver, Colo.	
McKNIGHT, HUGH S. '15	GAMMA
Kappa Alpha.	
1822 Grand Ave., Dallas, Tex.	
McLACHLAN, BENJAMIN HARRISON B. S., E. M. '11	BETA
24 E. 114th Pl., Chicago, Ill.	
The Peoples Natural Gas Co., Altoona, Pa.	
McLAUGHLIN, ADELBERT ROBERT B. S. '11	DELTA
10813 Marlborough, Cleveland, O.	
Inspector Standard Oil Co., Wks. No. 1, Cleveland, O.	
McLAUGHLIN, DONALD HAMILTON '14	EPSILON
Kappa Sigma, Tau Beta Pi, Phi Beta Kappa.	
1629 Euclid Ave., Berkeley, Cal.	
McLEAN, J. B.	BETA
Barre, Vt.	
McMILLAN, WM. DOUGLAS	EPSILON
2333 College Ave., Berkeley, Cal.	
McNABB, WILLIAM THEODORE B. S., E. M. '11	BETA
Tau Beta Pi.	
316 Sand Beach Ave., Bad Axe, Mich.	
Engr. Jno. A. Kruse Engr. Co., New Orleans, La.	
McNAIR, BERTRAND M. '09	BETA
Brimley, Mich.	
Shift Boss, Lake Superior Power Co.	
McPHERRIN, WM. LANE '14	ETA
Beta Theta Pi.	
1919 E. 11th St., Kansas City, Mo.	
McRAE, RANDOLPH E. M. '07	ALPHA
Alpha Delta Phi.	
Davidson & McRae, Toronto, Canada.	
METCALF, JOHN CLAFLIN '13	BETA
9 Woodstock Ave., Allston, Mass.	
Chief Engr. Veteran Mine, Kimberly, Nev.	

MEUCHE, ALFRED HENRY	B. S., E. M. '05	BETA
Tau Beta Pi.		
135 Agate St., Houghton, Mich.		
Mead & Meuche, Engrs., Houghton, Mich.		
MILLER, JAMES S.		THETA
Phi Delta Theta.		
Roosick Falls, N. Y.		
MILLS, CARL E.	'15	BETA
Tau Beta Pi.		
149 Ruby St., Houghton, Mich.		
MILLS, HAROLD F.	Student	BETA
Tau Beta Pi.		
149 Ruby St., Houghton, Mich.		
MILNE, RUFUS H.	Student	ALPHA
Phi Sigma Kappa.		
812 N. Main St., Crokston, Minn.		
1139 Raymond Ave., St. Paul, Minn.		
MINER, ROBERT INNES	Columbia B. S., ex '10	ALPHA
Sigma Chi.		
50 Kemble St., Utica, N. Y.		
Instructor Mech. Draw., Utica Free Acad., Utica, N. Y.		
MOFFETT, JOSEPH	'14	BETA
1527 Minerva St., St. Louis, Mo.		
MOODY, GRAHAM BLAIR	'12	EPSILON
Phi Beta Kappa, Sigma Xi, Beta Kappa Alpha, Pi Kappa Alpha, Mim Kaph Mim.		
2618 Etna St., Berkeley, Cal.		
MOODY, WILBUR LADDE	B. S. '11	EPSILON
Tau Beta Pi, Sigma Xi, Mim Kaph Mim.		
2618 Etna St., Berkeley, Cal.		
Geol., So. Pac. Co., 712 Flood Bldg., San Francisco, Cal.		
MOREE, KINSEL EARL	'16	DELTA
635 So. Main St., Bowling Green, O.		
MORGAN, GEORGE HERBERT	B. S., E. M. '08	BETA
1010 Bryson St., Youngstown, O.		
F. H. Probert, Central Bldg., Los Angeles, Cal.		
MORRISON, GEORGE ADELBERT	B. S., E. M. '04	BETA
2111 Morgan Ave., Morgan Park, Ill.		
Republic Mng. & Metal Co., Ap. 863, Mexico City, Mex.		

MORSE, ROY ROBERT B. S. '13	EPSILON
Sigma Xi.	
2735 Seminary Ave., Oakland, Cal.	
Hawaiian Com'l & Sugar Co., Purnene, Isle of	
Main. Terr., Hawaii.	
MOSES, JOHN EDWARD	DELTA
9330 Gorman Ave., Cleveland, O.	
MOWERY, CLARENCE W. C. E. '08	ALPHA
1124 21st Ave. N., Minneapolis, Minn.	
Res. Engr. N. P. Ry., Glendive, Mont.	
MURPHY, GEORGE R. Student	ZETA
Beta Theta Pi.	
1121 N. Central, Oklahoma City, Okla.	
1533 Tenn. St., Lawrence, Kansas.	
MURPHY, NORBERT DANIEL Ex '12	BETA
318 6th St., Calumet, Mich.	
Algamated Co.	
15 Hennessy Annex, Butte, Mont.	
MYERS, JOHN F. E. M. '13	GAMMA
Kappa Sigma.	
Butte & S. Cop. Co. Ltd., Butte, Mont.	
NEER, PAUL '09	GAMMA
Golden, Colo.	
San Juanita, Honduras.	
NEWCOMER, EARL T. '15	ZETA
Sigma Nu.	
2420 Perry Ave., Kansas City, Mo.	
NEWELL, FENN BAILEY '13	BETA
287 Washington Ave., Providence, R. I.	
Alamo Iron Wks., San Antonio, Tex.	
NEWKIRK, DANIEL LEIGHTON E. M. '11	BETA
Tau Beta Pi.	
123 Maybury Grand Ave., Detroit, Mich.	
c-o Smith, Hinchman & Grylls.	
NICOLSON, CLYDE WALLACE A. B. '13	BETA
1336 Fisher Ave., Detroit, Mich.	
NOLAN, PHILIP EDWARD E. M. '13	GAMMA
Sigma Nu.	
c-o U. S. Reclamation Service, Meadow Creek,	
Wash.	
NUTTING, FLOYD LESTER '15	ZETA
Russell, Kansas.	

O'BRIEN, JOHN CHARLES E. M. '12	ALPHA
255 W. George St., St. Paul, Minn.	
Asst. Engr. A. C. M. Co., Butte, Mont., Hennessy Annex.	
O'DONNELL, OTTOMAR '15	ETA
1527 Race St., Denver, Colo.	
OLSON, WALTER SAMUEL E. M. '12	ALPHA
306 Williams St., St. Paul, Minn.	
Leaser: Concentration Plant, Mariposa, Cal.	
ORYNSKI, JOHN B. '14	EPSILON
2222 Atherton St., Berkeley, Cal.	
ORYNSKI, LEONARD WOJOMIR '14	EPSILON
2222 Atherton St., Berkeley, Cal.	
OSBORN, ERNEST LESLIE Yale '12 Ph.B.	ETA
Phi Gamma Delta, Sigma Xi.	
Denver, North Co., Missouri.	
OTIS, BURDETT A. E. M. '11	EPSILON
Hotel Reichshof, Munchen, Bayern, University	
Ludwig-Maximilian.	
San Jacinto, Cal.	
PACK, ROBERT W. B. S.	EPSILON
U. S. Geological Survey,	
1525 Spruce St., Berkeley, Cal.	
PACKARD, EARL LEROY A. B. '11, M. A. '12	EPSILON
Theta Chi, Sigma Xi, BKA.	
1522 Grove St., Berkeley, Cal.	
PAINTER, CARL ELLIOTT Student	ZETA
Kappa Sigma.	
Rapid City, S. Dak.	
926 Miss. St., Lawrence, Kansas.	
PAINTER, CHARLES J. '15	ZETA
Sigma Nu.	
Barclay, Kansas.	
PALMER, PORTEUS BRODERICK '10	ALPHA
Beta Theta Pi.	
1730 Portland Ave., St. Paul, Minn.	
PARKER, JAMES Student	ZETA
Phi Gamma Delta.	
Tulsa, Oklahoma.	
745 La. St., Lawrence, Kansas.	

PARKER, ROSS I. B. S. '12	ZETA
Beta Theta Pi. 10 Washington Ave., Schenectady, N. Y. Test Dept., Gen. Elect. Co.	
PARKHURST, JR., FREDERICK S. B. S., E. M. '04	BETA
522 Cedar Ave., Niagara Falls, N. Y. City Engr., Convention Hall, (Same).	
PATTERSON, GEO. S.	THETA
Delta Tau Delta, Tau Beta Pi. Denver, Colo.	
PEACOCK, C. D. B. S., E. M. '08	BETA
731 E. 50th St., Chicago, Ill. Brainerd, Minn.	
PEARCE, JAMES WILLIAM Student	GAMMA
Beta Theta Pi. 621 Vine St., Denver, Colo. Beta Theta Pi House, Golden, Colo.	
PERKINS, JOHN COWLE Student	BETA
Phi Delta Theta. 3601 Clinton Ave., Cleveland, O.	
PERKINS, WILLIAM JAMES B. S., E. M. '07	BETA
Kappa Sigma. Norway, Mich. Salsn. Pluto Powder Co., Ishpeming, Mich.	
PERRY, JOE B. E. M. '12	ALPHA
Sigma Alpha Epsilon. Mng. Engr. Pittsburg-Dolores Mng. Co., Rockland Mine, via Yerington, Nevada.	
PHILLIPS, ROBERT BAILEY B. S., E. M. '06	BETA
Box 906, Warren, Arizona.	
PICKARD, BYRON OSCAR B. S., E. M. '07	BETA
Theta Chi. Box 762, Phoenix, Ariz.	
POLLEY, ERNEST E. '15	ETA
Delta Tau Delta. 406 Garfield St., Ft. Collins, Col.	
POTTER, OCHA B. S. '06	BETA
Tau Beta Pi. Supt. Superior Copper Co. and Head of Eff. Dept., Calumet & Hecla Mining Co., Houghton, Mich.	
PRICE, WILLIAM F. B. S. '13	ZETA
Keltz. 123 E. 10th St., Topeka, Kan. 1106 Kerckhoff Bldg., Los Angeles, Cal.	

PROUTY, ROSWELL W.	E. M. '12	ALPHA
Chi Psi.		
478 Ashland Ave., St. Paul, Minn.		
Mng. Engr. Oliver I. M. Co., Box 376, Ely, Minn.		
PULLEYN, JOHN W.		THETA
New York City, N. Y.		
QUINLAN, HOWARD.	'14	ALPHA
Theta Delta Chi.		
542 Ashland Ave., St. Paul, Minn.		
QUINN, MAX F.	'12	ALPHA
Sigma Alpha Epsilon.		
c-o Fed. M. & S. Co., Wallace, Idaho.		
RAMSEY, ELMER R.	E. M. '12	GAMMA
Sigma Alpha Epsilon, Tau Beta Pi.		
2373 Albion St., Denver, Colo.		
Mng. Engr. Wellington Mines Co., Breckenridge, Colo.		
RANDOLPH, GEORGE OSCAR	B. S., E. M. '07	BETA
213 E. Arch St., Marquette, Mich.		
Box 37, Porcupine, Ont., Can.		
RANNEY, ALFRED GARDNER	'13	ETA
Chi Psi.		
San Antonio, Tex.		
Hotel Carlton, Boston, Mass.		
RASHLEIGH, CHAS. JOHN	'14	BETA
73 Diamond St., Houghton, Mich.		
REBER, JAS. B.	'14	ETA
Phi Gamma Delta.		
Sinking Springs, Pa.		
RHOADES, ROY STILES	'15	EPSILON
Phi Kappa Sigma.		
Casper, Wyo.		
RICE, HERBERT ALLEN	Ohio State C. E., '97	Hon. ZETA
Sigma Xi.		
1304 Ohio St., Lawrence, Kan.		
Head-Dept. of Math., U. of Kan.		
RIDDLE, LYNN BARNES	'12	DELTA
Alpha Sigma Phi, Tau Beta Pi.		
411 5th St., Marietta, O.		
Marietta Oil Co., Nowata, Okla.		

RIEDEL, LOUIS F. E. E. '11	ALPHA
3220 Chicago Ave. S., Minneapolis, Minn. Com. Agt. Middletown Elect. Light Co., Box 1004, Middletown, Conn.	
RIGBY, WILLIAM ARTHUR B. S., E. M. '12	BETA
Sigma Nu. Mt. Vernon, Iowa. Mng. Capt. Old Bed Mines, Mineville, Essex Co., N. Y.	
RIGGS, FRED '10	BETA
323 W. State St., Princeton, Ind.	
RIKER, EUGENE ALFRED '10	BETA
725 Church St., Flint, Mich. Olivet, Mich.	
RINGSRED, GERHARD J. '14	ALPHA
Zeta Psi. 319 W. 4th St., Duluth, Minn.	
ROCCA, BERNARD THOMPSON '15	EPSILON
Alpha Tau Omega. Helen Mine, Middletown, Cal.	
ROCKWELL, HARVARD SELDON Student	ALPHA
Sigma Alpha Epsilon. W. Duluth, Minn. 3427 Humboldt Ave. S., Minneapolis, Minn.	
ROCKWOOD, FLETCHER Student	ALPHA
Psi Upsilon. 1700 Thomas Pl., Minneapolis, Minn.	
ROOD, LYNN E. M. '09	ALPHA
Delta Upsilon. 584 Grand Ave., St. Paul, Minn. 322 10th Ave., Duluth, Minn.	
ROSE, HOWARD LAWRENCE Student	DELTA
10902 Wade Park Ave., Cleveland, O. Ohio State U.	
ROSE, WILLIAM A. E. M. '06	ALPHA
Delta Tau Delta. Pickands, Mather & Co., Duluth, Minn.	
ROWELL, JOSEPH HILL Student	BETA
301 E. "C" St., Iron Mountain, Mich. Theta Tau House, Houghton, Mich.	
RUPERT, ALLEN MEAD '11	GAMMA
Died Jan. 1911, near Silverton, Colo.	

RUSSELL, D. O. E. M. '09	GAMMA
Kuala Lumpur, Selangor, Federated Malay States.	
RUTH, B. ALVIN '13	ZETA
Moundridge, Kan.	
1032 Tenn. St., Lawrence, Kan.	
SADTLER, CHESTER B.	THETA
Denver, Colo.	
SAWYER, ELDTRETH L. '11	ALPHA
Phi Gamma Delta.	
1506 Emerson Ave. N., Minneapolis, Minn.	
Sawyer-Cleator Lumber Co., Minneapolis, Minn.	
SCHABER, CARL F. B. S., E. M. '12	BETA
Theta Xi.	
203 W. Morrell St., Burro Mt. Copper Co., Tyrone, Jackson, Mich.	
SCHAFER, LOUIS E. M. '09	GAMMA
Kappa Sigma, Tau Beta Pi.	
Lake City, Colo.	
Silverton, Colo.	
N. M.	
SCHEMMEI, JULIUS P. '16	BETA
513 Elmora St., Escanaba, Mich.	
SCHLOTTER, LAWRENCE CLIFFORD '13	BETA
Sigma Nu.	
Alliance, O.	
SCHRADER, ERICH JULIUS E. M. '05	ALPHA
694 Marshall Ave., St. Paul, Minn.	
Gen. Mgr. Pittsburg-Dolores Mng. Co., Rockland, via Yerington, Nev.	
SCHRAMM, OTTO FERDINAND B. S. '12	DELTA
3190 W. 98th, Cleveland, O.	
Chem. Am. Steel Foundries Co., Alliance, O.	
SCHRAMM, BERNARD DANIEL B. S. '11	DELTA
2715 Scovill Ave., Cleveland, O.	
SCHREIBER, GEORGE F. Student	BETA
624 N. 4th Ave., Saginaw, Mich.	
Theta Tau House, Houghton, Mich.	
SCHROEDER, WALTER HUGH B. S. '11	EPSILON
Phi Delta Theta.	
c-o City Engr., San Francisco, Cal.	
SCOTT, JR., J. ALLYN '11	ALPHA
Phi Kappa Psi.	
405 N. Central Ave., W. Duluth, Minn.	

SCOTT, JOHN CLINTON '14	DELTA
Zeta Psi.	
2138 W. 26th St., Cleveland, O.	
SCOTT, JAMES RALPH B. S., E. M. '11	BETA
Paulding, O., care of Jas A. Scott.	
Chf. Surv., Dome Mines Co., Ltd., Porcupine, Ont., Can.	
SCOTT, WALTER GIFFORD '09	BETA
Care of J. P. Scott, Traverse City, Mich.	
Civ. Eng. U. S., P. H. S., Ft. Stanton, N. Mex.	
SEGER, RALPH LOGAN Student	ZETA
Phi Delta Theta.	
1132 N. Harrison, Topeka, Kan.	
1409 Tenn. St., Lawrence, Kan.	
SETTLE, WM. CALDWELL '16	ALPHA
Psi Upsilon.	
1733 S. 3d St., Louisville, Ky.	
SEVERIN, CARL B. S. '10	DELTA
10519 Wilbur Ave., Cleveland, O.	
Portland Gold Mng. Co., Victor, Colo.	
SHANLEY, J. R. '15	GAMMA
Beta Theta Pi.	
Denver, Colo.	
SHEDWICK, JR., WILLIAM J. B. S., E. M. '09	BETA
618 N. 34th St., Philadelphia, Pa.	
Care of W. V. Sprague, Pier No. 2, Seattle, Wash.	
SHEFFIELD, FRED W. C. E. '09	ALPHA
Phi Gamma Delta, Theta Nu Epsilon.	
209 Ash St., Crookston, Minn.	
Civ. Engr., Fargo Bridge & Iron Co., Fargo, N. Dak.	
SHELDON, CHURCHILL GEAR '10	BETA
R. F. D. No. 2, Grand Rapids, Mich.	
SHEPARD, GEORGE M. C. E. '09	ALPHA
Sigma Xi, Tau Beta Pi.	
Kenyon, Minn.	
Care of A. F. Meyer, Consult. Engr., 1001 Germania Life Bldg., St. Paul, Minn.	
SHICK, HARVEY B. '14	BETA
La Porte, Ind.	
Beloit, Wis.	

SHIELDS, C. P.	'15	BETA
Hubbel, Mich.		
SIMPSON, JAMES FREDERIC	B. S., E. M. '09	BETA
Kappa Sigma.		
Edison Park, Chicago, Ill.		
Member Vance & Co.		
SKAVLEM,* HENRY GILMAN	E. M. '10	GAMMA
Tau Beta Pi.		
605 Prospect Ave., Janesville, Wis.		
Supt. Canadian Mining & Finance Co., Ltd., Timmins, Ont., Can.		
SMITH, ALFRED LEGGATT	B. S., E. M. '06	BETA
28 Lorraine Court, Pontiac, Mich.		
SMITH, CLINTON BESLY.	N. D., B. A., E. E. '05	ALPHA
Died July 6, '13, on Mt. St. Helens, Wash.		
SMITH, FRANKLIN MORSE	'14	EPSILON
2115 Center St., Berkeley, Cal.		
SMITH, JR., GEORGE D.	B. S. '11	EPSILON
1541 Larkin St., San Francisco, Cal.		
Carson City, Nevada.		
SMITH, HARRISON W.	A. B. '95, S. B. '97	Hon. ETA
Professor Mass. Inst. Tech., Auborndale, Mass.		
SMITH, LYON	Harv. S. B. '05, '10	GAMMA
Kappa Sigma.		
Metall., Pittsburg Silver Pk., Bold Mng. Co., Blair, (Esmeralda Co.), Nevada.		
SNEDAKER, EUGENE GEORGE	Student	GAMMA
Kappa Sigma.		
1314 Gaylord St., Denver, Colo.		
Kappa Sigma House, Golden, Colo.		
SNEVE, JACK STICKLEY	M. E. '11	ALPHA
Chi Psi.		
142 Mississippi Riv. Blvd., St. Paul, Minn.		
Emerson Brantingham Co., Minneapolis, Minn.		
SNOW, LESLIE WHITMORE	A. B. '12	ETA
Theta Delta Chi.		
Rochester, N. H.		
SNYDER, EDWARD HARRISON	E. M., B. S. '11	BETA
Tau Beta Pi.		
Mgr. & Leaser, Pioche Assay Office, Pioche, Nev.		

SPRING, WILLIS WARE M. E. '07	ALPHA
Phi Kappa Psi.	
2200 1st Ave., Minneapolis, Minn.	
Carnegie Fuel Co., Duluth, Minn.	
SPROWL, NORMAN EUGENE '17	DELTA
1566 E. 82d St., Cleveland, O.	
STALEY, HENRY H. Student	ZETA
Sigma Nu.	
Richmond, Kan.	
STANTON, WOLCOTT P. '12	EPSILON
Delta Kappa Epsilon.	
2255 Vallejo St., San Francisco, Cal.	
STAPLES, CHEVALIER BAYARD '08	BETA
Stillwater, Minn.	
Otis Staples Lbr. Co., Ltd., Wycliffe, B. C., Can.	
STAPLES, CHARRON M. B. S. '10	EPSILON
Tau Beta Pi, Sigma Xi, Phi Beta Kappa.	
Ashland, Ore.	
STARRETT, HOWARD M. M. E. '09	ALPHA
Phi Gamma Delta.	
818 7th St. S. E., Minneapolis, Minn.	
Sanitary Vacuum St. Cleaner Co.	
STEIN, EARLE ROSCOE B. S. '11	DELTA
1500 Mars Ave., Lakewood, O.	
Tech. Foreman, Dow Chem. Co., Midland, Mich.	
STEINBACH, HARRY PHILIP B. S., E. M. '06	BETA
L'Anse, Mich.	
Engr. 813 Sellwood Bldg., Duluth, Minn.	
STEINBACH, CHARLES FREDERICK Student	BETA
L'Anse, Mich.	
107 Hubbell Ave., Houghton, Mich.	
STILWILL, EDWARD HERBERT B. S., E. M. '11	BETA
Tau Beta Pi.	
163 Maybury Ave., Detroit, Mich.	
STONE, CHARLES WELLINGTON. '15	ALPHA
Phi Kappa Psi.	
3156 Columbus Ave., St. Paul, Minn.	
STONER, REGINALD CARLYLE B. S. '12	EPSILON
Alpha Tau Omega.	
Geol. Dept., Standard Oil Co., Bakersfield, Cal.	
STRAND, CARLYLE HENRY B. S. '11	DELTA
Tau Beta Pi.	
1327 E. 112th St., Cleveland, O.	
Metall. Penn. R. R. Co., 1417 11th St., Altoona, Pa.	

STRONG, EARLE A. '14	GAMMA
Sigma Alpha Epsilon.	
35 Cherry St., Clulonta, N. Y.	
STRONG, JOHN LAWRENCE E. M. '08	ALPHA
608 Wolvin Bldg., Duluth, Minn.	
Mng. Engr. Oliver I. M. Co., Duluth, Minn.	
STRONG, M. ROY '12	DELTA
Sigma Xi, Tau Beta Pi.	
9807 Gaylord Ave., Cleveland, O.	
Penn. R. R. Offices, Pittsburgh, Pa.	
SULLIVAN, DANIEL CLARENCE '16	ALPHA
Phi Kappa Psi.	
618 W. Myrtle St., Stillwater, Minn.	
SUMAN, JOHN ROBERT '12	EPSILON
Delta Upsilon, Tau Beta Pi.	
Geol. Dept. Rio Braro Oil Co., S. P. Bldg., Houston, Tex.	
SUTHERLAND, DAVID LEE Student	ETA
Chi Psi, Theta Nu Epsilon.	
1819 Dupont Ave. S., Minneapolis, Minn.	
SWEENEY, WILFRED GRAY B. S. '06	BETA
3818 Norris St., Kansas City, Mo.	
Globe, Arizona.	
SWENSON, GUY ANDREW S. B. '13	ETA
Alpha Delta Phi.	
The John Swenson Granite Co.	
Concord, N. H.	
TALIAFERRO, NICHOLAS LLOYD B. S. '13	EPSILON
Beta Theta Pi, Tau Beta Pi.	
2607 Hearst Ave., Berkeley, Cal.	
Geol. Asst. U. of Cal.	
TAYLOR, EDWARD ANDERSON B. S. '11	DELTA
Tau Beta Pi.	
Chief Chemist Grasselli Chem. Co.	
1549 Crawford Rd., Cleveland, O.	
TEMPLIN, RICHARD LAWRENCE '15	ZETA
Minneapolis, Kansas.	
THIELICKE, CHARLES G. '12	BETA
2716 Elmwood Pl., Seattle, Wash.	
Alaska Treadwell Gold Mines Co., Treadwell, Alaska.	

THOLEN, CHARLES W. Student	ZETA
Phi Kappa Psi.	
1009 S. 2d St., Leavenworth, Kan.	
428 Linden St., Camden, N. J.	
THOMAS, LESTER C. E. M. '12	GAMMA
Beta Theta Pi.	
1037 Clarkson St., Denver, Colo.	
THOMAS, WALLACE SENTENY '15	ETA
Delta Kappa Epsilon.	
721 E. High St., Springfield, O.	
THOMS, JAMES EZRA E. M. '08	BETA
Three Rivers, Mich.	
U. S. Gypsum Co., Gypsum, O.	
THOMSON, PERCY W. '12	EPSILON
Tau Beta Pi, Sigma Xi.	
South Pasadena, Cal.	
TICKELL, FRED GEORGE B. S. '12	EPSILON
Delta Tau Delta.	
2601 Durant Ave., Berkeley, Cal.	
Mineralogy Dept. U. of Cal.	
TIMPERLY, WILLIAM D. C. E. '10	ALPHA
Sigma Alpha Epsilon.	
1415 Adams St. N. E., Minneapolis, Minn.	
Estimator, Crown Iron Wks., Minneapolis, Minn.	
TOLF, FRANK R. '13	EPSILON
201 S. Batavia Ave., Batavia, Ill.	
Operators Club, Edison, Cal.	
TORBERT, JAMES BURNETT B. S., E. M. '07	BETA
Jersey Shore, Pa.	
425 James Bldg., Chattanooga, Tenn.	
TORRANCE, ELIAKIN C. E. '09	ALPHA
Psi Upsilon, Tau Beta Pi.	
Care of Psi U. House, U. of M., Minneapolis, Minn.	
TREMBRATH, JAMES '08	BETA
537 Franklin St., Butte, Mont.	
Elk City, Idaho.	
TROPPMAN, GEORGE LOUIS B. S. '10	DELTA
Theta Nu Epsilon.	
1351 E. 124th Pl., Cleveland, O.	
Care of W. L. Curry, Pittsburgh, Pa.	
TURNER, HARRY MILTON B. S., E. M. '11	BETA
Kappa Sigma.	
341 Houston Ave., Crookston, Minn.	
Box 90, Pioche, Nev.	

URQUHART, GEORGE KENNETH	Student	ALPHA
Delta Tau Delta.		
1034 Ashland Ave., St. Paul, Minn.		
VAIL, RUDOLPH RISING	B. S. '11	EPSILON
Delta Tau Delta.		
Box 134 East Rand, Transvaal, So. Africa.		
VAN HOUTEN, EDWARD A.		ZETA
Phi Kappa Psi, Sigma Xi.		
Died Feb. 6, 1914, at Chicago, Ill.		
VAN VALKENBURGH, ROBERT RAY	B. S., E. M. '13	BETA
233 College Ave., Houghton, Mich.		
Perseverance Mine, Juneau, Alaska.		
VARNEY, FRED WARNER	'08	BETA
350 E. So. Temple St., Salt Lake City, Utah.		
VICKERY, MELVILLE WILLIS	B. S. '11	DELTA
Sigma Kappa Phi.		
Lake Ave., Lakewood, O.		
Assist. Secy. Cleveland Law School, 1336 Engr's Bldg., Cleveland, O.		
VINAL, ELWIN LE ROY	'07	ALPHA
New Bedford, Mass.		
Mng. Engr., 211 Melhoen Bldg., E. Seattle, Wash.		
VORCK, CHARLES R.	'14	ALPHA
1120 Laurel Ave., St. Paul, Minn.		
Boulder, Mont.		
WAGNER, JOHN EZRA	B. S., E. M. '08	BETA
Belding, Mich.		
Cornucopia Mines Co., Cornucopia, Ore.		
WAGNER, RALPH BAPTIST	B. S., E. M. '10	BETA
Tau Beta Pi.		
225 Hastings St., Grand Rapids, Mich.		
WALDNER, CLARENCE EDWIN de la Gardé	'13	EPSILON
1525 "G" St., Eureka, Cal.		
WALKER, STANLEY M.	'11	GAMMA
Beta Theta Pi.		
Supt. Frisco Tunnel Co., 1st Natl. Bank Bldg., Denver, Colo.		
WALLING, BENJAMIN B.	E. E. '09	ALPHA
Rehnke-Walling Investment Co., 624 Plymouth Bldg., Minneapolis, Minn.		

- WANVIG, CHESTER ODIN '12 BETA
404 Webster Pl., Milwaukee, Wis.
The Wallace & Smith Co.
- WANVIG, JR., JOHN DANIEL B. S., E. M. '08 BETA
Tau Beta Pi.
404 Webster Pl., Milwaukee, Wis.
Supt. Three R Mine, Patagonia, Ariz.
- WARD, RICHARD B. S. '13 ZETA
Sigma Chi.
Nampa, Idaho.
- WARREN, JR., ALVAH H. M. E. '08 ALPHA
Psi Upsilon.
645 Fairmont Ave., St. Paul, Minn.
Minn. Steel Co., Duluth, Minn.
- WASLEY, WILLIAM A. E. Met. '09 GAMMA
Beta Theta Pi.
1541 12th Ave., Greeley, Colo.
Tigre Mng. Co., Yzabal, Sonora, Mex., via Douglas, Ariz.
- WASSON, HAROLD JESSE '14 ALPHA
Sigma Alpha Epsilon.
1121 University Ave. S. E., Minneapolis, Minn.
- WATSON, GUY P. E. M., E. Met. '10 GAMMA
Beta Theta Pi.
Greeley, Colo.
Chem., Steptoe Val. Smelt. & Mng. Co., McGill, Nev.
- WEISEL, GEORGE FERDINAND '06 ALPHA
Delta Upsilon.
Missoula, Mont.
Logging Contr., St. Regis, Mont.
- WELCKER, THEODORE JEWELL B. S., E. M. '12 BETA
Tau Beta Pi.
Consol. Copper Mines Co., Kimberly, Nev.
- WELKER, GEORGE ERNEST (Clarkston) C. E. BETA
'09, E. M. '10
Omicron Pi Omicron.
112 Moran St. S., Oil City, Pa.
Chief Engr. Iroquois Nat. Gas Co., Buffalo, N. Y.
- WELLS, JR., RALPH EVANS '14 ETA
Delta Kappa Epsilon.
156 Westmoreland Pl., Los Angeles, Cal.

WENK, RALPH WALDO	'10	BETA
Kappa Sigma. 712 Marinette Ave., Marinette, Wis. Engr. Oriental Consol. Gold Mng. Co., Unsan, Korea.		
WENTZ, WALTER WILLIAM	Student	ALPHA
Elmore, Minn. 1401 6th St. S. E., Minneapolis, Minn.		
WESBROOK, DONALD McDERMID	M. E. '10	ALPHA
Chi Psi, Tau Beta Pi, Sigma Xi. 906 5th St. S. E., Minneapolis, Minn. Asst. Engr., Clyde Iron Wks., Duluth, Minn.		
WEST, HAL R.	'13	ALPHA
Phi Delta Theta. 2709 Irving Ave. S., Minneapolis, Minn.		
WEST, JOHN ROYLANCE	E. M. '10	GAMMA
Beta Theta Pi. 1532 Park Ave., Colorado Springs, Colo. King George Hotel, San Diego, Cal.		
WESTERFELT, EDMUND W.		GAMMA
Delta Kappa Epsilon. Braden Copper Co., Rancagua, Chili, S. A.		
WHEELER, JR., ALDEN DODGE	'15	ETA
Alpha Delta Phi. 50 Grafton St., Newton Center, Mass.		
WHEELER, ROBERT M.	E. M. '08	GAMMA
Sigma Alpha Epsilon. Consult. Engr., Denver, Colo. 418 Colorado Bldg., Denver, Colo.		
WHEELER, WALTER HALL	E. M. '06	ALPHA
Alpha Delta Phi. Engineer and Contractor; and Jr. Member Chas. H. Wheeler & Son. 820 Palace Bldg., Minneapolis, Minn.		
WHITE, CHAS. KENNETH	B. S. '13	EPSILON
Delta Tau Delta. Alaska Juneau Gold Mining Co., Treadwell, Alaska.		
WHITMAN, ALFRED RUSSELL	B. S., M. S. '11	EPSILON
Chief Geologist McIntyre Porcupine Mines Ltd. Schumacher, Ont., Can.		
WHITMAN, PERCY GREENE	Student	ETA
Phi Gamma Delta, Theta Nu Epsilon. 12 Dartmouth St., Sommerville, Mass.		

WIGGINS, RALPH RAYMOND	Student	BETA
Indiana, Penn.		
Theta Tau House, Houghton, Mich.		
WILCOX, ARTEMUS D. B. S.	'11	EPSILON
Sigma Phi Epsilon, Tau Beta Pi.		
1711 Euclid Ave., Berkeley, Cal.		
Surveyor, Goldfield Consol. Mines Co.,	Goldfield,	
Nev.		
WILFLEY, ELMER R.	'14	GAMMA
Beta Theta Pi.		
1300 High St., Denver, Colo.		
WILFLEY, GEORGE	Student	GAMMA
Beta Theta Pi.		
1300 High St., Denver, Colo.		
Silverton, Colo.		
WILKINSON, JOSEPH R.	Student	BETA
Alpena, Mich.		
WILKINSON, PAUL HARRIS B. S., E. M.	'05	BETA
Care A. C. Wilkinson, North Yakima, Wash.		
Cerro, Colorado, via Santa Ana, Sonora, Mex.		
WILLIAMS, E. I.		THETA
Delta Tau Delta, Tau Beta Pi.		
New York, N. Y.		
WILSON, FRANK LAKE B. S.	'12	EPSILON
2035 Hearst Ave., Berkeley, Cal.		
Chem., Afterthought Copper Co., Ingot, Cal.		
WILSON, HERBERT L.	'12	ZETA
Died, August, 1913.		
WING, HOMER WILLIAM	'08	BETA
538 W. Main St., Ionia, Mich.		
WISEMAN, ROBERT CUMMINGS	Student	ETA
Alpha Delta Phi.		
817 Limestone St., Springfield, Ohio.		
WOOD, ELY COCKLE E. M.	'09	BETA
Died May 21, 1910, near Santa Barbara, Mex.		
WOODRICH, OSCAR F. C. E.	'08	ALPHA
Sigma Chi.		
77 Spruce Pl., Minneapolis, Minn.		
Cedar Rapids Savings Bank, Cedar Rapids, Iowa.		
WOODWORTH, SELIM E.		THETA
Beta Theta Pi.		
Berkeley, Cal.		

WOOLF, JR., JOE H. '14	GAMMA
Sigma Nu.	
Greeley, Colo.	
WORTHINGTON, HAROLD '14	ETA
Beta Theta Pi.	
29 E. 77th St., New York, N. Y.	
WORTLEY, RUSSELL BRUCE	BETA
304 Florence St., Houghton, Mich.	
WRIGHT, H. H. M. E. '09	ALPHA
Zeta Psi.	
Farmington, Minn.	
Iowa Cent. Ry., Farmington, Minn.	
YOUNG, OLIVER WILLIAM B. S. '13	EPSILON
El Tigre Mining Co.	
Yzabal, Sonora, Mex., via Douglas, Arizona.	
ZELNER, OTTO S. Mich. B. S. '05	Hon. ALPHA
Phi Mu Alpha.	
321 Church St. S. E., Minneapolis, Minn.	
Asst. Prof. of Surveying, U. of M., Minneapolis, Minn.	
The following men, Rhombohedrons, alumni of our present Beta Chapter, are eligible to Theta Tau, but have not yet been initiated:	
COSSAR, GEORGE C.	RHOMB '06
East Craig, Corstorphine, Scotland.	
DOUGLAS, JR., THOMAS J. B. S.	RHOMB '03
900 New Hampshire Ave., Los Angeles, Cal.	
MERRY, HENRY M.	RHOMB '07
205 Hawthorne Rd., Baltimore, Md.	
YOUNG, JOHN W.	RHOMB '05
1115 Maryland Ave., Milwaukee, Wis.	
Supt. Buildings and Grounds, Milwaukee-Downer College.	

TOO LATE TO CLASSIFY

HOUSHOLDER, E. R. '17 2153 Fairmount Rd., Cleveland, O.	DELTA
MUTHER, W. P. '13 91 Arlington St., Newton, Mass.	ETA
MORRISON, A. S. '15 131 Morraine St., Brocton, Mass.	ETA
CAMP, ORTON P.	ETA
AFRICA, WALTER M.	ETA
WALTER, ALBERT V.	ETA
LAWRASON, LEVERING	ETA
KITTRIDGE, GEO. D.	ETA
DEAN, KEMERTON	ETA
LEEB, HENRY L.	ETA
HUFF, THOS. H.	ETA
WOOD, ROY V. Beta Theta Pi. New York City.	THETA

<p>ALPHA '05</p> <p>ERICH J. SCHRADER</p> <p>ENGINEER OF MINES</p> <p>Mgr. Pittsburg-Dolores Mining Co. A Limited Amount of Consulting Work Accepted Rockland via Yerington, Nevada.</p>	<p>GAMMA '10</p> <p>WALTER R. BROWN</p> <p>MINING ENGINEER</p> <p>Ruth, Nevada</p>
<p>BETA '11</p> <p>WM. T. McNABB</p> <p>New Orleans - La.</p> <p>WITH John A. Kruse Engr. Co.</p>	<p>GAMMA '10</p> <p>LYON SMITH</p> <p>SPECIALTY: CYANIDATION</p> <p>Care of E. R. Smith & Co. 77 Bedford St. Boston, Mass.</p>

PIANOS OF STANDARD MAKES FOR FRATERNITIES and FRATERNITY MEN

¶Write us the name of the Piano you intend to buy, and we will quote you our price on it.

¶No matter where you live---New York, Chicago, Los Angeles, or elsewhere, we save you money.

Prof. E. R. Cumings, State University, Bloomington, Ind., decided last fall to buy a Hardman Autotone, Style B. He obtained sealed bids from New York, Chicago, from us, and his local dealer. We were \$140.00 lower than our nearest competitor.

¶Let us show you testimonials from Professor Cumings and scores of other pleased customers.

Write us before you close this copy of *The Gear*

LEHNERTS PIANO COMPANY

525 Wabasha Street

::

St. Paul, Minnesota



The Hoover & Smith Co.

616 Chestnut Street
Philadelphia, Penn.

Diamond Merchants

Jewelers and Silversmiths

Theta Tau's Official Fraternity

— Jeweler —

If you want the finest pin made,
and novelties of the best quality—
we make 'em.

Specialists in

Medals Prizes Trophies