

Petition

OF

Alpha Pi

OF THE

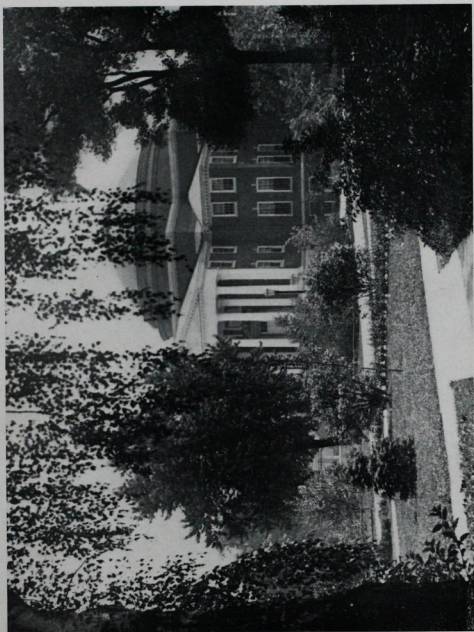
UNIVERSITY OF LOUISVILLE

LOUISVILLE, KENTUCKY

TO THE

THETA TAU FRATERNITY





ADMINISTRATION BUILDING FROM THE SPEED SCHOOL

Alpha Pi Fraternity

UNIVERSITY OF LOUISVILLE

Louisville, Kentucky

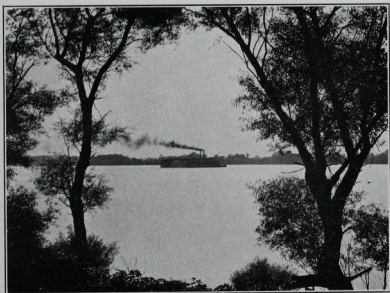
October 25, 1938

The Executive Council of Theta Tau Fraternity,

Gentlemen:

We, the undersigned active members of the Alpha Pi Fraternity, a recognized local fraternity of the University of Louisville, do hereby formally petition the Executive Council of the Theta Tau Fraternity and its several chapters for a charter:

<u>Hugh C. Hodge Jr.</u>	<u>Hert Dohmen</u>
<u>Wm. S. Sims</u>	<u>Frank W. Smithson</u>
<u>Harry H. Hummel</u>	<u>Edw. Edelhausen</u>
<u>Thor. H. Bruin, Jr.</u>	<u>John Whitehead</u>
<u>Lee C. Gonne</u>	<u>Paul Huber</u>
<u>Alex Davidson</u>	<u>Woodrow W. Celf</u>
<u>Wm. A. Percy</u>	<u>Thomas Lane</u>
<u>Harry E. Libby Jr.</u>	<u>J. H. Nobley Jr.</u>
<u>Robert E. McGowan</u>	<u>Halt Logsdon</u>
<u>Robert J. Williams</u>	<u>D. C. Dickerson</u>
<u>John M. Fontaine</u>	



STEAMBOAT ON THE OHIO

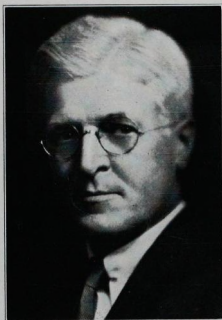
Why We Petition Theta Tau

We feel that affiliation with Theta Tau will enable us to carry out better the intentions of our original organization: the promotion of scholarship, leadership, and fellowship among engineers.

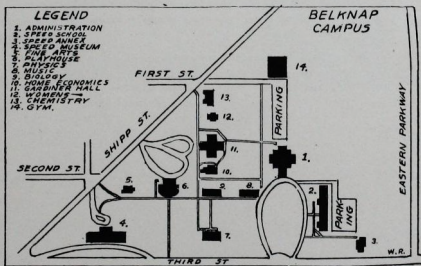
As a chapter of Theta Tau our group would have a larger measure of prestige and dignity, and would therefore be in a position to render better service to its own members and to those about it.

We are confident that Alpha Pi is strong enough to carry on creditably as part of your Fraternity. The rapid growth and development of the Speed Scientific School certainly makes the University of Louisville a fertile field for expanding the influence and benefits of Theta Tau.

This petition we therefore respectfully submit to the National Council and the several chapters of Theta Tau.



PRESIDENT R. A. KENT



History Of The University

The University of Louisville was founded by decree of the City Council of Louisville on April 3, 1837. The School of Medicine was opened that year. The corporation was chartered as a municipal university by an act of the Legislature of Kentucky in 1846. Soon after an appropriation for a university had been made by the City Council, the School of Medicine and the School of Law were put in active operation.

The College of Arts and Sciences was added to the University of Louisville in 1907, to carry out the founders' original design of establishing departments for the promotion of science, literature, and the liberal arts. In 1924, upon the organization of the Speed Scientific School, the College of Arts and Sciences became the College of Liberal Arts.

The School of Dentistry of the University of Louisville was founded in 1887, as a department of Central University of Richmond, Ky. In 1918 this institution was purchased by the University of Louisville, and reorganized as a school of the University.

In 1917 a donation of the immediate family of William R. Belknap had made possible the purchase of a tract of land of about eighty acres for a new site for the University. In 1923 this site was sold. In November, 1925, the city of Louisville authorized an issue of \$1,000,000 in bonds of the city for the expansion of the plant of the College of Liberal Arts and the Speed Scientific School. With a part of the proceeds of this bond issue together with the proceeds of the sale of the Belknap tract, the Belknap Campus, located at Third and Shipp streets and Eastern Parkway and containing forty acres, was purchased. On this campus are located the College of Liberal Arts, the Speed Scientific School, the School of Law, the Speed Museum, The Playhouse, and the general administration offices.

The total enrollment in the University is now over 4000, while that in the Speed School slightly exceeds 200.



DEAN F. L. WILKINSON



MAIN BUILDING, SPEED SCHOOL

Speed Scientific School

HISTORY OF THE SCHOOL

In 1924 Mr. William S. Speed and his sister, Mrs. Frederic M. Sackett of Louisville, through a gift of \$250,000 created as a memorial to their father the James Breckenridge Speed Foundation for the establishment of a school for the study and advancement of the sciences related to engineering. The school is known as the Speed Scientific School, and was opened in September, 1925.

The record of this school, brief though it may be, has been one of outstanding achievements and service to the community. In 1935 the Chemical Engineering Department was accredited by the American Institute of Chemical Engineers, and became the first south of the Ohio River to be so honored. In 1937 the school was fully accredited in all its branches by the Engineers' Council for Professional Development, supplementing previous accreditations.

In December, 1935, Omicron Chapter of Sigma Tau was installed at the university, taking over what was formerly Sigma Omicron, an organization of the same type. There is one other professional engineering fraternity on the campus, the Pyramid, also a local group.

The school was for twelve years under the able leadership of the late Dean Bennett M. Brigman, who was in a large sense responsible for the high ranking it has attained.

Dean Brigman, or, as he was better known to the students, "Dad" Brigman, was not only a noted educator and "Human Engineer," but was a vital force in his community and his profession. He was active in many fraternal and professional organizations. Of these might be mentioned the American Society of Mechanical Engineers, of which he was a vice-president at the time of his death in February, 1938.

Ford Lee Wilkinson, Jr., formerly Professor and Head of the Department of Mechanical Engineering at the University of Tennessee, has assumed the duties of Dean of the Speed School starting September 1, 1938.

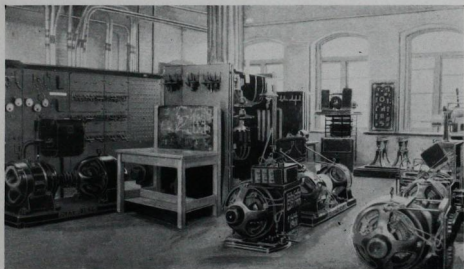
Dean Wilkinson is a graduate of the United States Naval Academy, Annapolis, and of Columbia University, where he received an M. S. in Mechanical Engineering. He served in the Navy until 1927, when he resigned with the rank of Lieutenant. He was engaged in private engineering work until his association with the University of Tennessee in 1933. He is a member of Tau Beta Pi, the American Society of Mechanical Engineers, and the Society for the Promotion of Engineering Education.

GRADING SYSTEM

The grade point system is used to determine scholastic standing. Students are given a certain number of grade points for each quarter hour of each course in which they are registered. The total number of



SCENE IN CHEMICAL ENGINEERING LABORATORY



VIEW OF ELECTRICAL ENGINEERING LABORATORY

points divided by the total number of hours carried gives the point standing.

A—(95% and above).....	3	grade	points	per	credit	hour
B—(89 - 94%)	2	"	"	"	"	"
C—(82 - 88%)	1	"	"	"	"	"
D—(75 - 81%)	0	"	"	"	"	"
E—(Condition)	0	"	"	"	"	"
F—(Failure)	—1	"	"	"	"	"

While a definite grade point standing is not now required for graduation, this matter is under the advisement of a faculty committee and a ruling concerning this is expected to be put in effect soon.

DEGREES GRANTED

A thesis is required of every candidate for a degree. The following undergraduate degrees are given: B. Ch. E., B. C. E., B. E. E., B. M. E. The graduate degree of M. S. is given at the present time in Chemical and Mechanical Engineering. The professional degree is given in all four branches.

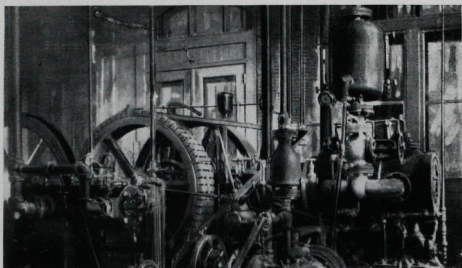
THE CO-OPERATIVE SYSTEM

The courses in engineering are of the "co-operative" type and are so arranged as to provide for specialization in the important fields of these sciences. The co-operative plan is based upon the need of theory and practice under working conditions of engineering. It is not an experiment in education; it is, on the contrary, a successful plan that produces graduates of executive ability who are capable of the management of engineering industries and who have a broad perspective of scientific and engineering work.

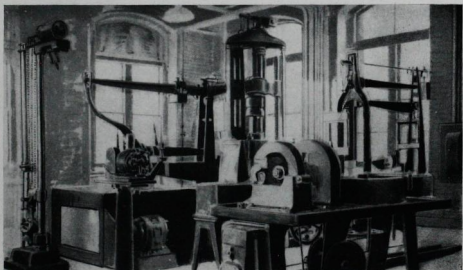
To obtain this practical training the classes are divided into two groups, one of which is engaged in class work and the other is employed in an industrial establishment. After three months these groups change places.

The course of study covers four years of intensive work. The Freshman year is spent in class work, the Sophomore and Junior years are divided between class work and co-operative work, and the Senior year is devoted to class work in an effort to unify and complete the program of the three previous years. This course provides the same amount of theoretical training usually given in any engineering or technical school.

While at work in the industries, the student is visited at frequent intervals by the Co-ordinator, who discusses with the student the work which he is doing and its relation to the theoretical training received in the classroom. The Co-ordinator also interviews some one under whom the student is working. These investigations are supplemented by reports written by the student, covering all phases of the work on which he has been employed.



SECTION OF MECHANICAL ENGINEERING LABORATORY



VIEW OF STRENGTH OF MATERIALS LABORATORY

History of The Alpha Pi Fraternity

The Alpha Pi Fraternity was granted its charter on March 16, 1926, less than a year after the founding of the Speed Scientific School as a department of the University of Louisville.

Its creation arose from the realization by its cofounders, the late Dean Brigman and Professor Wylie B. Wendt, senior member of the faculty, of the increasing need of the school for a fraternity of its own. They intended this fraternity to be of professional nature, with membership limited strictly to engineers and composed as nearly as possible of a group consisting of students with high scholastic standings and records of leadership and outstanding performance in general school activities.

With these objects in mind the selection of the several students that would individually meet these requirements and collectively form a homogeneous and harmonious group, was undertaken. From the student body twelve boys were chosen.

When the final choice was made the students selected were informed of the movement and each one called into conference on the possibilities of rejecting any of the others not deemed suitable to the enterprise. As there were no rejections the group seemed particularly well chosen.

The details of organization were then quickly but thoroughly worked out and the first business meeting was held a few weeks later. The first meeting place was one of the class rooms of the school.

A few months after its organization the fraternity obtained rooms of its own, and has maintained such until the present time.

From its founding Alpha Pi has numbered among its members students of high scholastic standing and leaders in professional and general campus activities. The honors of its members individually and of the Fraternity as a group have been consistently worthy of note.

Dean Brigman was the Fraternity's first faculty adviser, and was succeeded by Prof. Wendt. Dr. D. M. Bennett then served, and was followed by Prof. J. A. Ayers. At the present time Professors G. H. Harding and J. M. Roberts are the faculty advisers.

Alpha Pi has had for several years an organized alumni chapter, which holds meetings once a month. An Active-Alumni Get-Together once a year is always the occasion for much fun and good fellowship. The advice and cooperation of the Alumni have been invaluable to the Actives.



ACTIVE MEMBERS OF ALPHA PI

Top Row: Edelhauser, Sibley, Smithson, Sims, Hummel, Crim, Huber, Whitehead.
Center Row: Logsdon, Gohmann, Davidson, Jenne, Hodge, Hand, Mobley, Williams.
Bottom Row: Witherspoon, Cerf, Fontaine, Perry.

Personnel Of Alpha Pi

FACULTY ADVISERS

George H. Harding—B. C. E. (1926), C. E. (1931), Ohio State University. Assistant Professor of Civil Engineering and Mathematics.

Mr. Harding came to the University of Louisville in 1929. For three years prior to this he was a full partner in the firm of Coulson and Harding, Civil and Municipal Engineers of Cincinnati, Ohio. He is a member of Theta Tau (Sigma, '26), the Society for the Promotion of Engineering Education, the American Society of Civil Engineers, the American Society of Photogrammetry, the Society of American Military Engineers, the Kentucky Society of Professional Engineers, and the Reserve Officers Association.

Jean M. Roberts—E. E. (1926), University of Virginia, M. S. in E. E. (1928), Massachusetts Institute of Technology. Associate Professor of Electrical Engineering.

Mr. Roberts was connected with the General Electric Company as a "Student Engineer" during his graduate study. He came to the University of Louisville in 1930 from Louisiana Polytechnic Institute. His organizations include Theta Tau (Pi, '26), Tau Beta Pi, the American Institute of Electrical Engineers, the Society for the Promotion of Engineering Education, and the American Association of University Professors.

HONORARY MEMBERS

Wylie B. Wendt—B. C. E. (1906), C. E. (1930), University of Kentucky. Professor of Civil Engineering.

Mr. Wendt is senior member of the Speed School Faculty, his tenure dating from 1926. He is a member of the American Society of Civil Engineers, the American Society for Testing Materials, the Society of American Military Engineers, the Reserve Officers Association, the Society for the Promotion of Engineering Education, the American Association of University Professors, and the Kentucky and the National Societies of Professional Engineers.

Donald M. Bennett—B. A. (1921), M. A. (1922), Ph. D. (1926), University of Wisconsin. Associate Professor of Physics.

Dr. Bennett's association with the University began in 1926. He is a member of Phi Beta Kappa, Phi Mu Alpha (an honorary musical society), Sigma Xi, the American Physics Society, the American Association of Physics Teachers, the Society for the Promotion of Engineering Education, and the American Association for the Advancement of Science.

Joseph A. Ayers—B. A. (1917), M. A. (1924), University of West Virginia. Associate Professor of English.

Mr. Ayers came to the University from Ohio State in 1931. His societies include Phi Sigma Kappa social fraternity and the American Association of University Professors.

MEMBER IN FACULTY

Wilson R. Barnes—B. S. in Ch. E. (1937), M. S. (1938), University of Louisville. Instructor in Chemical Engineering.

Mr. Barnes served as President of Alpha Pi in 1936-7, when he was also President of Omicron Chapter of Sigma Tau. He is devoting his summers to graduate study at the University of Iowa, where he expects to take the degree of Ph. D. He is a member of Theta Chi Delta, honorary chemical fraternity.

ACTIVE MEMBERS

Woodrow Cerf. Ch. E., '40; Louisville, Ky.

Alpha Pi, 2, 3; A. I. Ch. E., 2, 3.

Thomas Haley Crim, Jr. Ch. E., '39; Louisville, Ky.

Alpha Pi, 1, 2, 3, Treasurer, 4; A. I. Ch. E., 1, 2, 3, 4; Theta Chi Delta, 3, Vice-President, 4.

Alex Boyd Davidson. Ch. E., '39; Louisville, Ky.

Alpha Pi, 1, 2, 3, Sgt.-at-Arms, 4; A. I. Ch. E., 2, 3, 4; Student Council, 2, 3; Freshman Football, 1; Varsity Football, 2, 3, Captain, 4; "L" Club, 2, 3, Vice-President, 4; Intramural Sports.

Edwin George Edelhauser. M. E., '39; Louisville, Ky.

Alpha Pi, 1, 2, House Manager, 3, 4; A. S. M. E., 2, 3, 4; Varsity Football, 2, 3, 4; "L" Club, 3, 4; Intramural Sports; Class Sgt.-at-Arms, 1.

John Fontaine. Ch. E., '41; Louisville, Ky.

Alpha Pi, 1, 2; A. I. Ch. E., 1, 2.

Robert Goetzman. C. E. '41; Louisville, Ky.

Alpha Pi, 1, 2, 3.

Herbert Ray Gohmann. C. E., '41; Louisville, Ky.

Alpha Pi, 1, 2; A. S. C. E., 1, 2; Class Treasurer, 2.

Thomas Hand. Ch. E., '40; Louisville, Ky.

Alpha Pi, 2, 3; A. I. Ch. E., 1, 2, 3; Class Sgt.-at-Arms, 3; Intramural Sports.

Hugh C. Hodge, Jr. Ch. E., '39; Louisville, Ky.

Alpha Pi, 1, 2, Treasurer, 3, President 4; A. I. Ch. E., 1, 2, 3, 4; Student Council, 1, 3, 4; Engineers' Ball Committee 3; Football Numeral, 1.

Paul Edward Huber. Ch. E., '41; Louisville, Ky.

Alpha Pi, 1, 2; A. I. Ch. E., 1, 2; Intramural Sports; Class Vice-President, 2.

Harry H. Hummel. Ch. E., '39; Louisville, Ky.

Alpha Pi, 1, 2, 3, Secy., 4; A. I. Ch. E., 1, 2, 3, 4, Cor. Secy., 4; Sigma Tau, 3, Secy., 4; Theta Chi Delta, 2, 3, Treasurer, 4; Class Historian, 4; Sigma Tau Scholarship Award, 1; Sigma Tau and Theta Chi Delta Awards, 2.

- Lee Charles Jenne.** Ch. E., '40; Louisville, Ky.
Alpha Pi, 2, 3; A. I. Ch. E., 1, 2, 3; Intramural Sports; Class Treasurer, 2.
- Hal Newbold Logsdon.** Ch. E., '41; Louisville, Ky.
Alpha Pi, 1, 2; Student Council, 1, 2; Intramural Sports.
- John Mobley.** M. E., '40; Olive Hill, Ky.
Alpha Pi, 2, 3; A. S. M. E., 1, 2, 3.
- William Perry.** E. E., '39; Louisville, Ky.
Alpha Pi, 2, 3, Pledge Master, 4; A. I. E. E., 1, 2, 4; Student Council, 4; Varsity Football, 3; Intramural Sports.
- Harry E. Sibley**—C. E., '39; Louisville, Ky.
Alpha Pi, 1, 2, Pledge Master, 3, 4; A. S. M. E., 2, 3; A. S. C. E., 4
- Himus S. Sims**—Ch. E., '39; Louisville, Ky.
Alpha Pi, 2, 3, Vice-President, 4; A. I. Ch. E., 1, 2, 3, 4; Intramural Sports; Student Council, 2; Class Secy., 3.
- Frank W. Smithson**—Ch. E., '40; Nashville, Tenn.
Alpha Pi, 2, House Mgr., 3, Cor. Sec., 3; A. I. Ch. E., 1, 2, 3; Varsity Track, 2; Intramural Sports.
- John Norman Whitehead**—M. E., '41; Jeffersontown, Ky.
Alpha Pi, 1, 2; A. I. Ch. E., 1; A. S. M. E., 2; Student Council, 2; Varsity Baseball, 1.
- Robert Williams**—Ch. E., '41; Louisville, Ky.
Alpha Pi, 1, 2; A. I. Ch. E., 1, 2.
- David Lane Witherspoon**—M. E., '39; Anchorage, Ky.
A. I. Ch. E., 1; A. S. M. E., 2, 3, Treasurer, 4; Class Vice-President, 1; Alpha Pi, 3, 4.

PLEDGES

- Seaton Hunter—Ch. E., '41.
- James Strother—M. E., '41.
- John Byder—'42.
- Thomas Coleman—'42.
- Willard John Davis, Jr.—'42.
- James Clifford Droppleman—'42.
- Fred Gillman Heil—'42.
- Nelson Gritton—'42.
- John McClain—'42.
- George Launcelot Michael—'42.
- Kenneth Sipe—'42.
- Charles Alfred Straeffler—'42.
- James Thornton—'42.
- Ernest Lee Witten—'42.

UNIVERSITY OF LOUISVILLE

Louisville, Kentucky

Office of the President

October 14, 1938.

National Council of Theta Tau

Gentlemen:

I am happy to support the application of Alpha Pi, local engineering group, for membership in Theta Tau. The group here is composed of excellent boys who have held together over a considerable period of time. They are active in general University matters, as well as in scholarship, and I believe they deserve acceptance in this fraternity.

Very truly yours,

R. A. KENT, President.

UNIVERSITY OF LOUISVILLE

Louisville, Kentucky

SPEED SCIENTIFIC SCHOOL

James Breckenridge Speed Foundation

Office of the Dean

October 14, 1938.

The Executive Council

Theta Tau Fraternity

Gentlemen:

In adding my endorsement to the petition of Alpha Pi for a charter in Theta Tau, I am motivated by the record of the local fraternity in scholarship and student activities.

Its membership has ranked high in academic and extra-curricular activities in the University. I am confident that, if granted a charter, the University of Louisville Chapter of Theta Tau would reflect credit on your fraternity.

Very truly yours,

F. L. WILKINSON, JR.,

Dean

National Officers, Active Chapters and Alumni Associations
Theta Tau Fraternity

Dear Brothers:

It is with considerable pleasure that I recommend the petition of Alpha Pi (local professional engineering fraternity) of the University of Louisville to you for your consideration. I have encouraged the desire of Alpha Pi to become an active chapter of Theta Tau and I trust that you will see fit to grant this petition.

I am confident that the granting of this petition will prove of mutual benefit to Theta Tau and to Alpha Pi. As a faculty adviser of Alpha Pi I appreciate the sincere and whole-hearted effort made by the present actives, and by the alumni, in maintaining a high scholastic standing, fostering fraternal fellowship, and taking a leading part in student activities on the campus.

As a member of Theta Tau (Sigma '26) I shall be very happy to welcome as an active chapter Alpha Pi, whose aims, purposes and achievements have much in common with those of Theta Tau.

Your approval of this petition is earnestly requested.

Yours in H. & T.,
GEORGE H. HARDING,
Sigma '26,
Asst. Professor Civil Engineering
and Mathematics.

October 15, 1938.

The Executive Council and Chapters of Theta Tau

Dear Brothers:

It gives me great pleasure to recommend for your consideration the petition of the Alpha Pi Fraternity for a charter in Theta Tau Fraternity. Alpha Pi has been active in student affairs at the University of Louisville for a number of years, and also has an active alumni organization in Louisville.

As one of the faculty advisers of Alpha Pi and also as a member of Theta Tau (Pi Chapter, 1926) I feel sure that the members of Alpha Pi are worthy of membership in Theta Tau, and am confident that the Speed Scientific School and the Theta Tau Fraternity would be mutually benefited by the establishment of a chapter of Theta Tau here.

I trust that you will give this petition prompt and favorable consideration.

Sincerely yours, in H. and T.,
JEAN M. ROBERTS,
Associate Professor of Electrical
Engineering.

October 14, 1938.

Executive Council
Theta Tau
P. O. Box 244
Reno, Nevada

Dear Brothers:

I am happy to endorse the petition of Alpha Pi, local engineering fraternity of the University of Louisville. Louisville being my home town, it has been my privilege to know many of the members of this fraternity over a period of years. They are fine men and a credit to their University.

I have met the active members of Alpha Pi and visited with them. I am impressed with the high type young men that they have continued to pledge.

Believing that these men will be an asset to Theta Tau, I remain,

In H. & T.,

GILBERT D. ROULSTON,
Mu '34.

Louisville, Kentucky,
209 North Hite Ave.,
October 22, 1938

Executive Council of Theta Tau
c/o E. J. Schrader, Grand Scribe
P. O. Box 244,
Reno, Nevada

Dear Brothers in Theta Tau:

With reference to the petition of Alpha Pi, local engineering fraternity at the University of Louisville, and to your letter in this connection, I wish to make the following statement:

The membership of this local, both active and alumni, is composed of alert young men of unusual promise, and who impressed me with the fact that they are already bound together by strong ties as a group, which is, I believe, not always the case.

I am thoroughly convinced that if this petition is given favorable action, the Louisville Chapter will be lasting source of credit to our Fraternity.

It is therefore with great pleasure and confidence, that I endorse most heartily the petition which Alpha Pi is submitting to you.

Fraternally yours,

EDWIN L. WHITE

October 14, 1938.

To the Executive Council
Theta Tau Fraternity

Gentlemen:

Members of Alpha Pi, a local engineering fraternity in the Speed Scientific School, inform me that they are desirous of securing a charter to become a chapter in your fraternity of Theta Tau.

During the early years of this local, I was intimately connected with their activities, and during recent years I have kept informed relative to their standing. The local chapter has made an excellent record, individually and collectively. It is my sincere opinion that these young men are worthy of membership in Theta Tau, and that they will reflect credit upon your fraternity.

The administrative and teaching members of the University of Louisville are quite sympathetic towards fraternities, and I know of no reason why a chapter of your fraternity in this university should be anything except a great success. I hope that the officers and members of Theta Tau may grant a charter to the local petitioners.

Very truly yours,

W. B. WENDT,
Professor of Civil Engineering.

October 17, 1938.

The Executive Council
Theta Tau Fraternity

Gentlemen:

The members of the Alpha Pi Fraternity have been known to me for several years, both as individuals and as a group. I have always been impressed by their scholastic and extra-curricular activities.

I consider it a privilege to add my endorsement to the petition of the Alpha Pi Fraternity for a chapter of Theta Tau.

Yours very truly,

R. C. ERNST,
Professor of Chemical Engineering.

October 15, 1938.

Executive Council of Theta Tau

Dear Sirs:

It gives me pleasure to recommend to you the local fraternity, Alpha Pi. I have known many of its members during the last 10 years. I am pleased to be able to say that individually and as a group the membership is to be highly commended.

If their petition is acted upon favorably, I am sure they will be a distinctive asset to Theta Tau.

Very truly yours,

SAMUEL T. FIFE,
Professor of Electrical Engineering,
Head of Department.

Executive Council
Theta Tau

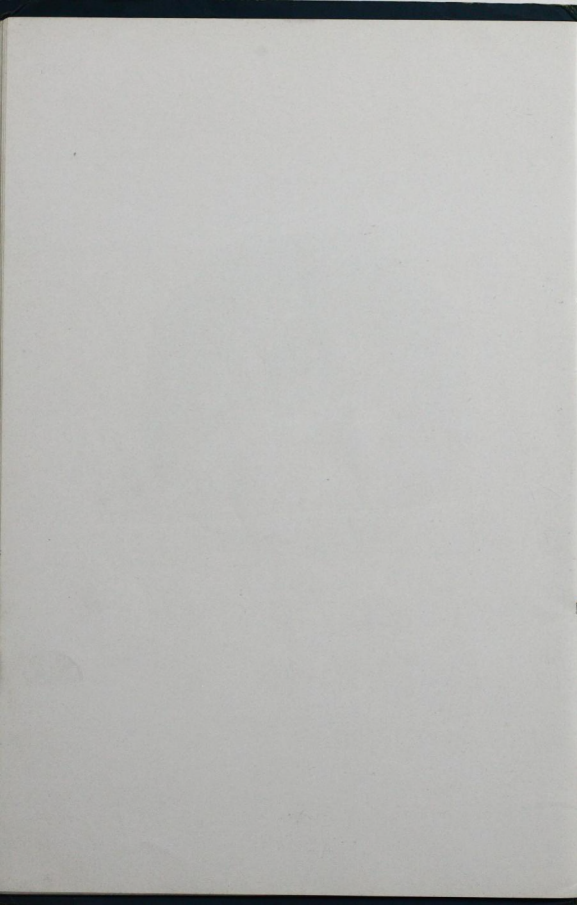
Gentlemen:

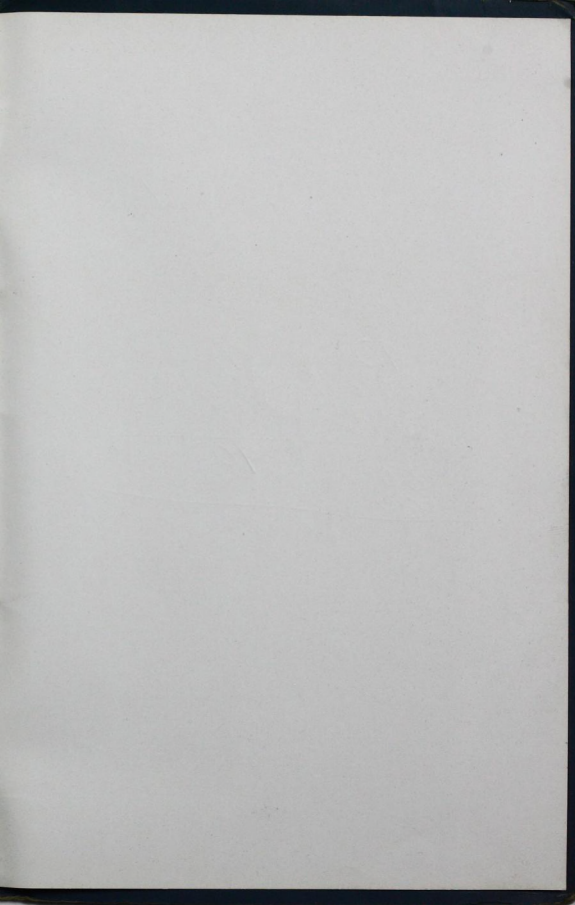
The Alpha Pi is a live organization and, in my opinion, is worthy of any honor or consideration the Theta Tau Fraternity may decide to bestow on our local group.

Yours sincerely,

RALPH S. TROSPER,
Professor of Mechanical Engineering.







we

they

50

90

20

100

90

100

50

60

60

90



