

DELTA PSI



NINETEEN HUNDRED TWENTY-TWO

A PETITION
TO
THETA TAU



FROM
DELTA PSI
OF THE
UNIVERSITY OF ARKANSAS



UNIVERSITY HALL

DELTA PSI
University of Arkansas

Fayetteville, Arkansas.

May 1, 1922.

The Executive Council,

Theta Tau Fraternity.

Gentlemen:

We the undersigned members of the Delta Psi Fraternity, of the University of Arkansas, do hereby respectfully petition the Theta Tau Fraternity for a charter.

Harry B. Curtis

Orville C. Word

H. R. Clark

L. Gale Huggins

G. R. Kilbourn

Harry McDowell

L. J. Collamore

Harry McMullin

Jack W. Booker

T. E. Alford

Henry McKinnis

Cyrus King

Brice R. Smith

Sam Jory

H. F. Minnis



PERSONNEL OF DELTA PSI

Honorary Members

W. B. Stelzner, B. E. E. (University of Arkansas), E. E. (University of Arkansas), M. S. (Ohio State University), Professor of Electrical Engineering.

F. G. Baender, B. M. E. (University of Iowa), M. M. E. (Cornell University), Professor of Heat Power Engineering.

W. R. Spencer, B. A. (University of Indiana), B. S. C. E. (Rose Polytechnic Institute), Assistant Professor of Civil Engineering.

Active Members

Harry B. McDowell, C. E., '23

Pres. University Society of Civil Engineers
Treas. General Engineering Society
Member American Association Engineers
Guard of the Association of Collegiate Engineers
1922-23 Sec.-Treas. Delta Psi
Cadet Lieut. U. of A. unit R. O. T. C.
Member Scabbard and Blade

Brice R. Smith, C. E., '23

Member Sigma Alpha Epsilon
Treas. University Society of Civil Engineers
Member Tau Beta Pi
Guard of the Association of Collegiate Engineers
1922-23 V.-Pres. Delta Psi.

H. F. Minnis, E. E., '22

Member Sigma Nu
Student member American Institute of Electrical Engineers
Guard of the Association of Collegiate Engineers.

Howard B. Clark, M. E., '22.

V.-Pres. Delta Psi
V.-Pres. U. of A. branch American Society of Mechanical Engineers
Knight of the Association of Collegiate Engineers
Member Sigma Chi
M. E. Editor of Arkansas Engineer.

H. L. McMullin, Ch. E., '23

Member Gamma Chi
Guard of the Association of Collegiate Engineers.

Harry B. Curtis, E. E., '22

Pres. Delta Psi
E. E. Editor of Arkansas Engineer
Member Pi Kappa Alpha
Knight of the Association of Collegiate Engineers
Student member American Institute of Electrical
Engineers.

Jack W. Booker, E. E., '23

Sec.-Treas. Delta Psi
1922-23 Pres. Delta Psi
Cor. Sec. Tau Beta Pi
1922-23 Pres. Tau Beta Pi
Pres. Student Branch American Institute of Electrical
Engineers
Sec. General Engineering Society
1922-23 2nd Lieut. "B" Co., 2nd Reg. of Scabbard and
Blade
Guard of the Association of Collegiate Engineers
1922-23 Cir. Mgr. Arkansas Engineer
Cadet Lieut. U. of A. unit R. O. T. C.
Member Sigma Chi (Pledge)

T. E. Alford, C. E., '22

Knight of the Association of Collegiate Engineers
V.-Pres. University Society of Civil Engineers
V.-Pres. Local Chapter American Association Engi-
neers.

Loftus Collamore, C. E., '22

Member University Society of Civil Engineers
Guard of the Association of Collegiate Engineers
Member American Association of Engineers
Member Eta Eta Eta.

G. Rex Kilbourn, E. E., '22

Member Pi Kappa Alpha
Student Member American Institute of Electrical
Engineers
Member Varsity Football Team
Varsity Club
Knight of the Association of Collegiate Engineers.

L. Gale Huggins, E. E., '23

Treas. Student Branch American Institute of Electrical Engineers
Member American Association of Engineers
Assistant Editor Arkansas Engineer
1922-23 Editor Arkansas Engineer
Member Razorback Staff
Member U. of A. Branch Arkansas Advancement Association
Treas. Periclean Literary Society
Guard of the Association of Collegiate Engineers
Cadet Lieut. U. of A. Unit R. O. T. C.
U. of A. Rifle Team.
Member Square and Compass

Sam Jory, M. E., '22

Pres. Student Branch American Society of Mechanical Engineers
Pres. Local Chapter American Association of Engineers
V.-Pres. General Engineering Society
Knight of the Association of Collegiate Engineers.

Cyrus King, E. E., '23

Guard of the Association of Collegiate Engineers
Student members American Institute of Electrical Engineers

Orville C. Word, Jr., C. E., '23

Member Kappa Sigma
Member Scabbard and Blade
Member University Society of Civil Engineers
Business Mgr. Arkansas Engineer
Member American Association Engineers
Member Razorback Staff
Cadet Lieut. U. of A. Unit R. O. T. C.

Henry H. McKinnies, M. E., '23

Member Sigma Phi Epsilon
Member Arkansas Boosters' Club
Student Manager of Athletics
Member University Band 1919-20 and 1920-21
Guard of the Association of Collegiate Engineers
Member Razorback Staff
Sec.-Treas. U. of A. Branch American Society of Mechanical Engineers.

HISTORY OF DELTA PSI FRATERNITY

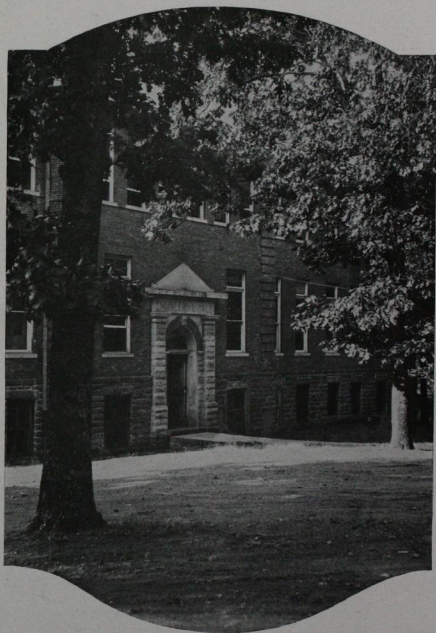
The Delta Psi Fraternity was organized during the winter term of the school year 1918-19. It was then known as the Engineers' Club. It was organized for the purpose of promoting the interests of the College of Engineering as well as to foster an interest in student activities. The club existed until the fall of 1920, merely as a leading body in the activities of the Engineering College. At this time, however, the members, realizing the need of a greater feeling of brotherhood and fraternalism in the Club, reorganized it on a different basis and revised the constitution with the idea of eventually petitioning for membership in a national engineering fraternity.

With this change of policy and with the advent of brotherly relations the Club became a staunch fraternal organization. Membership was limited to Juniors and Seniors enrolled in regular courses in engineering, and was based upon scholarship, practicality, personality, and prominence in student activities. At this time also it was voted that members upon graduation should retain membership in the Club as alumni. After a successful year it was thought that the Club had attained a standing which would warrant petitioning a national body for membership and on March 31, 1921, a petition was sent to the Executive Council of Theta Tau Fraternity.

The beginning of the school year of 1921-22 found only a small number of the active members of the Club back in school, but these, with the aid of the alumni, selected the most worthy of the men in the Junior and Senior classes and started off the new year in good shape. During the fall term various letters of recommendation were procured and were sent in to support the petition. But at the convention of Theta Tau the petition was held over for further information. Then, realizing the deficiencies of the first petition, it was decided to get up a new, more complete one and submit it to the Executive Council for consideration. Prior to this the name of the Club was changed to the Delta Psi Fraternity, the reason being that such a name is more in keeping with the character and policy of the organization.

WHY WE PETITION THETA TAU

The local Delta Psi was organized in 1918 under the name of the Engineers' Club, and the founders had in mind the petitioning of some national engineering fraternity, as soon as it felt itself capable of carrying the responsibility that would naturally occur should a charter be granted.



ENGINEERING HALL

ed by a national fraternity. Since the founding of the Delta Psi we have commanded the greatest respect of all the other clubs on the campus and now feel able to perform any duties the national Theta Tau may require.

The main reasons for our petitioning Theta Tau are as follows: Theta Tau is a growing professional fraternity and they encourage high scholarship. Our local society is professional and the scholarship is a great deal above the average in our institution as a whole, scholarship being one of the greatest recommendation for a new pledge. We wish, therefore, to unite with a fraternity of the highest standing, both professionally and scholastically.

We want to associate ourselves with a professional engineering fraternity which includes the best engineering schools of the country—with a fraternity whose chapters are the leading element in their respective schools.

The choosing of Theta Tau was based on a careful study of all the professional engineering fraternities and from all that we can learn the ideals and aims of Theta Tau are our own.

Should the executive officers see fit to grant us a charter, we will submit ourselves to all rules and regulations set down by them.

THE UNIVERSITY

On March 27, 1871, the general assembly of the state of Arkansas accepted the provisions of an act of Congress (Morrill Act), approved July 2, 1862, "providing for the endowment, support, and maintenance of at least one college" in the state. Fayetteville, Washington Co., was selected as the seat and the institution was opened January 22, 1872. The campus, comprising 120 acres of land, buildings, some fifteen, and equipment are estimated to be worth \$950,000. The total receipts for the year ending June 30, 1920 were \$606,570. (These are itemized under resources on page 13 in the University catalogue which accompanies this petition.) The University receives a major portion of its support from a millage tax which has been raised within the last year from four ninths mill to one mill.

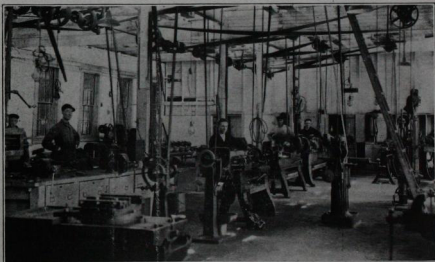
There are the following divisions of the University: The College of Arts and Sciences, The College of Education, The College of Engineering, The College of Agriculture, Agricultural Experiment Station, Engineering Experiment Station, and University Extension Division at Fayetteville; The College of Medicine at Little Rock; and the Branch Normal College at Pine Bluff.

Candidates for admission must be a graduate of an accredited high school or preparatory school, and must have completed satisfactorily at least fifteen entrance units. The College of Engineering offers four-year courses leading to the degrees of Bachelor of Chemical Engineering, Bachelor of Civil Engineering, Bachelor of Civil Engineering in Highways, Bachelor of Electrical Engineering, Bachelor of Mechanical Engineering, Bachelor of Mining Engineering, graduate and professional courses leading to the degrees of Chemical Engineer, Civil Engineer, Electrical Engineer, and Mechanical Engineer; and special two-year courses leading to a certificate.

The graduates of the College of Engineering of the University of Arkansas are scattered over the entire world, occupying positions of trust in foreign lands, in the service of the United States Government, in large manufactories, and in state and municipal service or are building for themselves reputations as professional engineers.

The Growth of the University

	Faculty	Engineering Graduates	Students	Total Enrollment
1899-1900-----	39	25	80	240
1904-1905-----	42	40	144	386
1909-1910-----	85	75	185	715
1914-1915-----	76	80	169	722
1919-1920-----	90	66	237	852
1921-1922-----	96	74	285	1053



OTHER ORGANIZATIONS ON THE CAMPUS

Social Fraternities and Sororities

	When installed
Sigma Alpha Epsilon.....	1893
Sigma Nu.....	1904
Kappa Sigma.....	1890
Sigma Chi.....	1905
Kappa Alpha.....	1895
Sigma Phi Epsilon.....	1907
Pi Kappa Alpha.....	1894
Square and Compass.....	1921
Zeta Tau Alpha.....	1903
Pi Beta Phi.....	1909
Delta Delta Delta.....	1913
Chi Omega.....	1895
Kappa Kappa Kappa (Local) Petitioners to Kappa Kappa Gamma.....	1916
Eta Eta Eta.....	1915

Honorary Organizations

Skull and Torch (Local) Petitioners to Phi Beta Kappa.....	1915
Alpha Zeta (Agriculture).....	1917
Pi Delta Epsilon (Journalistic).....	1917
Scabbard and Blade (Military).....	1916
Tau Kappa Alpha (Oratorical and Debating).....	1915
Tau Beta Pi (Engineering).....	1914
Phi Alpha Theta (Historical).....	1921
Pi Kappa (Local Journalistic for Women).....	1917
Alpha Phi Epsilon.....	1920

The Engineering College of the University of Arkansas also has a chapter of the following organizations:

American Institute of Electrical Engineers.
American Society of Mechanical Engineers.
American Association of Engineers.
Association of Collegiate Engineers (General Engineering Society.)

Professional Organizations

Delta Phi (Local Medical).....	1921
Gamma Chi (Local Chemical).....	1917

The Arkansas Section of the American Chemical Society has headquarters at Fayetteville. Any student in Chemical Engineering is eligible to student membership upon approval of application.



PEABODY HALL

ENDORSEMENTS

The Executive Council of Theta Tau Fraternity.

Gentlemen:

The Society of the Skull and Torch, local honorary scholastic society in the College of Arts and Sciences now petitioning Phi Beta Kappa, is more than glad to endorse the petition of Delta Psi. They are a credit to our institution and will likewise be a credit to your fraternity.

As president of Skull and Torch, I take great pleasure in recommending them to you.

Sincerely,

CLYDE F. GAY,

Pres. Skull and Torch.

May 3, 1922.

From Company B, Scabbard and Blade.

To The Executive Council of Theta Tau Fraternity.

Subject: The petition of Delta Psi, University of Ark.

1. Scabbard and Blade is vitally interested in the worth of all organizations represented on the campus.

2. We are proud of Delta Psi, its members individually and as an organization, and are glad to further its interests in any way possible. We therefore heartily recommend Delta Psi to the Theta Tau Fraternity.

CLYDE F. GAY,

Capt. Co. B 2nd Reg.

May 8, 1922.

To the National Council of Theta Tau.

It has been called to my attention that a number of our engineering students in the University of Arkansas have formed an engineering club or fraternity and are applying for membership in a National Organization.

Allow me to say, concerning the personnel of our local organization, that all of these young men are personally known to me to be of good moral character and are engineering students of the University of Arkansas in good standing. I believe your Council will make no mistake in granting the charter to this local organization.

Yours very truly,

W. N. GLADSON,

Dean, College of Engineering.

May 4, 1922.

Sec'y. Theta Tau.

My Dear Sir:

My attention has been called to the fact that a number of our students who now belong to a local Engineering fraternity, called Delta Psi, are petitioning your National Fraternity for a chapter.

I am acquainted with all these young men and can say that I feel that they are worthy of being with your national chapter.

Trusting that you may receive their petition with favor, I am

Very truly yours,

F. G. BAENDER,

Professor of Heat Power Engineering.

May 3, 1922.

The Executive Council

Theta Tau Fraternity:

Gentlemen:

In compliance with the request from Delta Psi, I take pleasure in writing for them a letter of endorsement. The members of the local chapter of Tau Beta Pi are in favor of having a chapter of Theta Tau at this school, and are unanimous in their belief that the members of Delta Psi would be a credit to any professional engineering fraternity. I am personally acquainted with every man in the petitioning organization, and am sure that all will well measure up to the standard for membership in Theta Tau.

Yours very truly,

STERLING B. HENDRICKS,

President Tau Beta Pi.

April 27, 1922.

Fayetteville, Ark.,

May 16, 1922.

Theta Tau Fraternity.

Gentlemen:

The young men who make up our local chapter of Delta Psi at the University of Arkansas are among the most prominent men in the University and leaders in all college activities.

It is a pleasure to recommend them as representative students to your organization.

Sincerely,

Wm. S. GREGSON,

General Secretary Y. M. C. A.

May 3, 1922.

To the Executive Council,
Theta Tau Fraternity.

Gentlemen:

I have been requested by a number of our engineering students, who I understand are applying for a chapter of Theta Tau Fraternity, to write you in their behalf.

I do not hesitate to recommend these men for your favorable consideration.

This being a relatively small college, I come in personal contact with most of the engineering students, and can say without qualification that these young men who are applying for a chapter are high grade men both from a standpoint of character and scholarship.

We have no fraternity devoted exclusively to engineering students, and I am very much in favor of the formation of a chapter of some National Engineering Fraternity here.

It will be a pleasure for me to give you any further information regarding these men, or the college.

Very truly yours,

G. P. STOCKER,
Professor, Civil Engineering.

May 3, 1922.

Theta Tau,
National Engineering Fraternity.

Gentlemen:

We have a group of engineering students who have been organized as a social organization for several years, and who are now functioning under the name of Delta Psi. I understand that they have petitioned you for recognition as a local chapter of your organization.

As Chairman of the Senate Committee on Student Organizations, I took pleasure, last year, in recommending this step. I believe that such an organization here will be beneficial, as it will serve to complete the organization of our student body in the College of Engineering.

The men petitioning for this chapter are, in my opinion, of sterling character and would reflect credit upon any organization. The majority of them hold high scholarship records and all are prominent in general student activities.

I trust that you will consider their petition favorably.

Very truly yours,

W. B. STELZNER,
Professor of Electrical Engineering.

May 2, 1922.

To the General Officers of Theta Tau.

Gentlemen:

I learn that a number of young men in the College of Engineering of the University of Arkansas, who are members of a local organization known as Delta Psi, are asking for a charter of Theta Tau, the national engineering fraternity.

In talking with these young men I find that the objects and aims of their local organization are practically the same as those of the national organization.

The local Delta Psi is composed of a splendid group of young men. They are good students and they are active in various forms of student life. I believe they would make an entirely creditable chapter of an organization such as I understand yours to be.

Very sincerely yours,

J. C. FUTRALL,
President.

May 2, 1922.

Executive Council, Theta Tau Fraternity.

Gentlemen:

The members of the local society, Delta Psi, inform me that they are petitioning for a charter in your national organization.

As registrar, I wish to say that I am well acquainted with the petitioners individually and consider them a representative group of the best students on the campus, both scholastically and in college activities. The scholarship of this organization has been considerably above the average. This year they have ranked second among all organizations in scholarship, the organization ranking first being a sorority.

I trust the application of our local society will receive your favorable consideration.

Yours very truly,

PEARL M. FEARS,
Registrar, University of Arkansas.

May 11, 1922.

Executive Council,
Theta Tau Fraternity.

Gentlemen:

It is with pleasure that I write a letter for our young men in the College of Engineering. I have had these men in my classes in Physics and I am well acquainted with every one of them. They stand high not only in their class work but also in their other many activities. There is not a man among them that I would hesitate to trust in every way and I would recommend them to any firm or corporation seeking young men of purpose and integrity.

I feel confident that upon careful investigation you will find these young men well worthy of being admitted to your national organization and I earnestly hope that you will make just such an investigation of their records.

Yours very respectfully,

G. E. RIPLEY,
Professor of Physics.

May 4, 1922.

The Executive Council,
Theta Tau Fraternity,
Fayetteville, Arkansas.

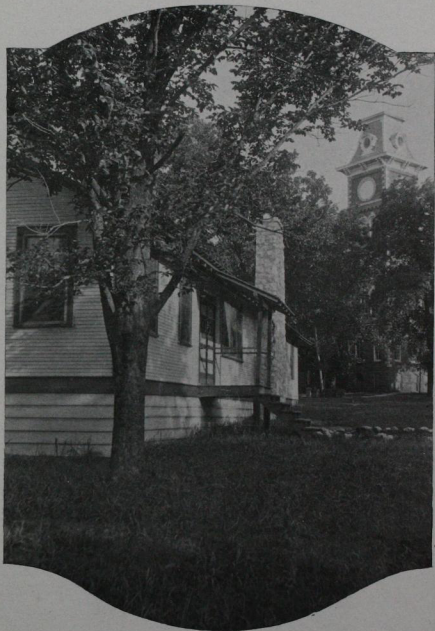
Gentlemen:

It gives me great pleasure to bear testimony to the character and scholarship of the young men who are members of our local chapter of Delta Psi. I have had nearly all of these men in my classes and can endorse their petition to you most heartily.

I am sure that your organization represented by this group would command the respect and good will of both their fellow students and members of the faculty. I therefore trust that you will give this petition your favorable consideration.

Respectfully yours,

HARRISON HALE,
Head of Department of Chemistry
and Chemical Engineering.



"Y" HUT

SOME UNIVERSITY ALMUNI—ENGINEERS

Preston Bowles, B. C. E., Chief Engineer, Mississippi Eastern R. R.

H. B. Sherve, B. C. E., Chief Engineer, K. C. & M. Ry.

I. G. Hedrick, B. C. E., C. E., Consulting Engineer, Kansas City, Mo.

A. C. Wood, B. M. E., Consulting Engineer, Philadelphia, Pa.

L. R. Ash, B. C. E., B. E. E., C. E., Consulting Engineer, Kansas City, Mo.

B. F. Wood, B. E. E., V. Pres. and Chief Engineer, United Gas & Electric Eng'r. Cor., New York City.

C. P. Barnett, B. E. E., General Chief Engineer, Sulzberger and Sons, Chicago.

J. L. Moore, B. M. E., Pres., Moore Steam Turbine Co., Wellsville, N. Y.

E. T. Brown, B. C. E., Division Engineer, B. & O. R. R.

C. L. Sadler, B. C. E., Topographic Engineer, U. S. Geological Survey.

I. B. Gough, Mi. E., Engineer, Folsom Morris Coal & Mining Co., Lehigh, Okla.

F. B. Bryan, B. Mi. E., Geologist, Gyssy Oil Co., Tulsa, Okla.

C. W. Paul, B. E. E., Development Engineer, New York City.

N. I. Takata, B. E. E., Kawasaki Dock Yards Co., Japan.

G. Cruze, B. C. E., Chief Checker, United Engineering Co., Pittsburg, Pa.

D. C. Hopper, B. E. E., Elec. Engineer, Commonwealth Edison So., Chicago.

H. R. Carter, B. C. E., C. E., State Highway Engineer, Little Rock, Ark.

K. A. Reed, B. E. E., Erecting Engineer, Westinghouse Electric and Mfg. Co.

N. D. Mitchell, B. C. E., Structural Engineer, Supervising Architects, Washington, D. C.

D. B. Blair, B. C. E., Principal, School for Employees, Amer. Bridge Co.

H. N. Pharr, B. C. E., C. E., Chief Engineer, St. Francis Levee District, Bridge Junction, Ark.

T. S. Risser, B. E. E., Chief of Service, Lincoln Tel. & Tel. Co., Lincoln, Neb.



M. F. Minnis, Graduate Student Course,
Westinghouse Electric & Mfg. Co.

Address:

525 Rebecca Ave., Wilkinsburg, Pa.

Activities in position.

John B. Rogerson, Chief of Maintenance for lumber company.

Address, Smackover, Arkansas.

Activities:

American Association of Engineers.

Arkansas Boosters Club.

American Society of Mechanical Engineers.

Baseball, 1919, 20, 21.

Varsity Club.

Harry M. Wright, Assistant Engineer for V. P. Knott, Consulting Engineer.

Address, 2105 West 16th Street, Little Rock, Arkansas.

Activities:

Engineers Club.

University Society of Civil Engineers.

American Association of Engineers.

Association of Collegiate Engineers.

Garland-Lee, Literary Society.

C. E. Editor, Arkansas Engineer.

Honorary Members.

Professor W. B. Stelzner.

American Institute of Electrical Engineers.

Society for Promotion of Engineering Education.

Tau Beta Pi.

National Electric Light Association.

Professor F. G. Baender.

Society of Automotive Engineers.

Society for Promotion of Engineering Education.

Tau Beta Pi.

Sigma Xi.

Professor W. R. Spencer,

Tau Beta Pi.

American Association of Engineers.

GRADE-AVERAGES FOR ACTIVE MEMBERS OF DELTA PSI.

H. B. Curtis	3.2
G. R. Kilbourn	2.3
H. R. Clark	3.1
P. O. Teter	2.0
J. W. Booker	2.8
L. Gale Huggins	3.2
H. L. McMullin	3.4
O. C. Ford	1.7
H. B. McDowell	2.7
H. H. McKinnis	5.1
B. R. Smith	3.8
Rupert Johnson	4.1
L. J. Harrington	1.8
F. E. Coker	2.6

Average for fraternity, 2.98.

Means general average (Fraternity and non fraternity) 1.75.

The highest for any social organization other than Delta Psi was 2.28, this being made by a sorority.

The above averages are for the fall term of 1922,23.

These averages are computed from the average number of grade points received. Each hour A equals 6; B equals 4; C equals 2; D equals 0; E equals -1, F equals -2. The "Missouri System" of grading is followed in the University of Arkansas.

The Registrar's letter of endorsement on page 17 of the petition gives our scholastic standing for last year.

Delta Psi intends to comply with the regulations of Theta Tau in regard to the chapter headquarters, and to take immediate steps towards the acquisition of a suitable meeting place so that the same can be used next term. We fully realize the desirability of such a place and as soon as we have a definite location we will notify the Grand Scribe of Theta Tau.

SUPPLEMENT TO DELTA PSI PETITION TO THETA TAU.

ALUMNI

T. E. Alford, Ass't Highway Engineer, Department of Public works and Buildings, Division of Highways, State of Illinois.

Present address, 37 Dixon National Bank Bldg., Dixon, Ill.

See petition for activities.

J. C. Black, Representative for "The Electric Storage Battery Co." St. Louis, Mo.

Address, 1508 Federal Reserve Bank Bldg. St. Louis, Mo. Activities;

Baseball, 1919, 20, 21.

Football, 1918.

President A. I. E. E. 1919, 20.

Vice President Engineers Club, 1920.

Y. M. C. A.

Sigma Chi.

L. J. Collamore, Junior Highway Engineer,

Division of Highways,

State of Illinois.

Address, District Engineers Office,

414 1/2 E. Washington St.

Springfield, Ill.

Activities in petition.

H. R. Hays, Assistant County Engineer,

Division of Highways,

Address, Palo Pinto, Texas;

Activities;

Member Association Collegiate Engineers. Pres. 1920-21.

Member University Society of Civil Engineers, V. P. 1920-21.

Member Engineers Club, President 1920, 21.

Member American Association of Engineers, Treas. 1920-21.

N. C. Inon, Assistant County Engineers.

Address, P. O. Box 233, Cleburne, Texas.

Activities:

President Student Chapter A. A. E.

Associate Editor, Arkansas Engineer.

Engineering Editor University Weekly.

Member University Society of Civil Engineers.

Sam Jery, Street Railway Dept.

Southwestern Gas and Electric Co.

Texarkana, Arkansas.

Address, 514 Spruce St., Texarkana, Texas.

Activities in petition.

F. B. Mason, Assistant Highway Engineer,

Address, 506 North Anglin St., Cleburne, Texas.

Activities;

American Association of Engineers,

Association of Collegiate Engineers,

President University Society of Civil Engineers.



