

Theta Tau Fraternity
from
Torque Fraternity
of
Purdue University



1927



Petition

TO

Theta Tau Fraternity

National Engineering Fraternity

FROM

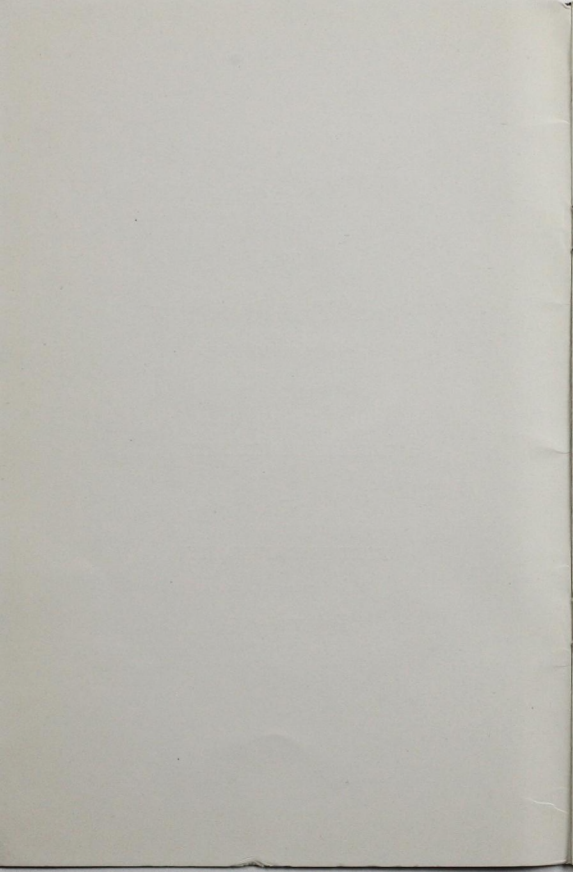
TORQUE FRATERNITY

AT

PURDUE UNIVERSITY

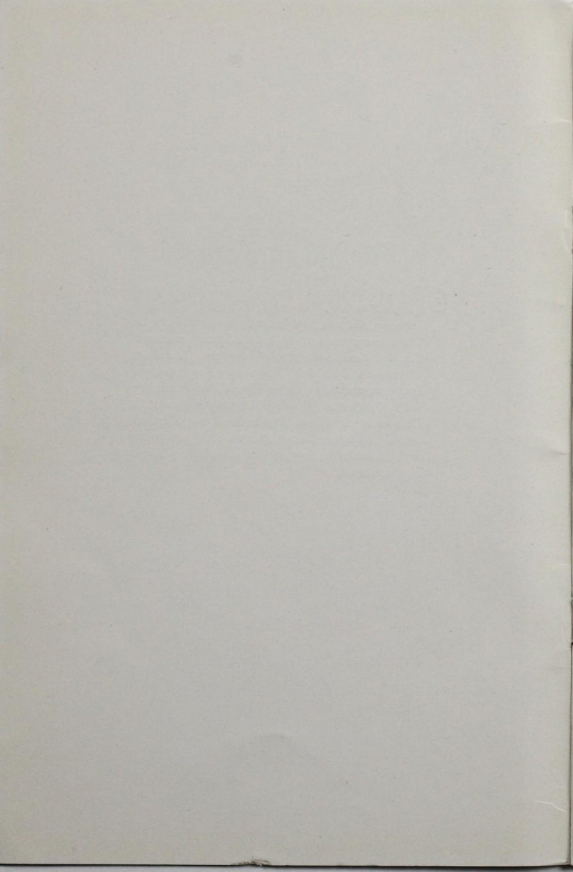
WEST LAFAYETTE, INDIANA

DECEMBER 1, 1927



To Theta Tau Fraternity

*W*E, the members of Torque Fraternity of Purdue University, Lafayette, Indiana, believing that we have upheld the high ideals set forth in our constitution, and believing moreover that our ideals and purposes in no way fall short of those maintained by Theta Tau Fraternity, do hereby respectfully petition Theta Tau Fraternity for a Charter under which we may operate as a Chapter of the Theta Tau national organization. Should this petition be granted, we shall pledge our undivided loyalty, support and devotion to Theta Tau Fraternity.



BRIEF HISTORY OF PURDUE UNIVERSITY



PURDUE UNIVERSITY is a "Land Grant College", and in common with all such institutions, owes its origin to the Morrill Act passed by Congress on July 2, 1862. This act offered grants of public land to the several states for the purpose of aiding in the maintenance of colleges whose "leading objects" should be, "without excluding other scientific or classical studies, and including military tactics, to teach such branches of learning as are related to Agriculture and the Mechanic Arts".

Purdue University was founded by the General Assembly of the State of Indiana in 1869, and was named in honor of John Purdue, a prominent citizen of Lafayette, who gave liberally of his energies and resources in helping to establish the University. Financial support comes from the State with some assistance from the National Government.

Purdue University has enjoyed a steady growth since its inception. There are now 3700 students enrolled from forty-one states and fifteen foreign countries. The faculty and staff number nearly 500. On the campus are thirty-six principal buildings housing the teaching and research departments of Engineering, Agriculture, Science, Home Economics, and Pharmacy.

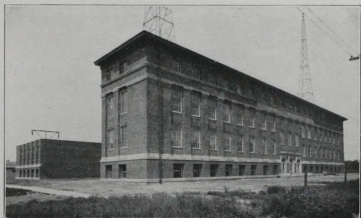
Ever since the founding of the University it has been primarily an Engineering school. The enrollment in the Schools of Chemical, Civil, Electrical, and Mechanical Engineering constitutes about two-

TABLE I
UNDERGRADUATE ENROLLMENT IN ENGINEERING

Year	For the Last Four Years				Total
	M. E.	E. E.	C. E.	Ch. E.	
1923-24	534	556	412	167	1669
1924-25	535	637	476	172	1820
1925-26	569	689	490	171	1919
1926-27	548	773	538	207	2066

thirds of the total enrollment of the University. At the present time Purdue University and the Massachusetts Institute of Technology are the two largest engineering schools in the United States. Six thousand

five hundred engineers have been graduated and several thousand others have studied at Purdue University one or more years. For forty-three years Purdue University graduates have been doing their share in the work of world advancement, performing their services effectively and quietly so that among the engineering colleges of the country none stands higher than Purdue University in the estimation of those who know of the accomplishments of technically trained engineers.



Electrical Engineering Building

Separate buildings are provided for each of the engineering schools. These buildings contain classrooms, lecture rooms, and laboratories equipped for practical instruction in testing materials, hydraulics, electrical, chemical, steam and gas, railway, and automotive engineering. There is a 600,000 volt high tension laboratory and transmission line; a locomotive testing laboratory, the first of its kind, supplemented by a locomotive museum; an air brake testing laboratory and a laboratory for testing draft gears, both engaged in important research work for the American Railway Association. The University is served by a modern power plant which is available for instructional and experimental testing in power engineering.

There are at present about one hundred teachers offering 250 technical courses to about 2250 engineering students. In addition to these there are teachers in English, History, Economics, Science, Mathematics, Languages, etc., who are instructing engineering students. The Purdue engineering student devotes more than a third

of his time to subjects which are acceptable for a Bachelor of Arts degree at any Liberal Arts college.



*Civil Engineering Building
and the Mechanical Tower*

The Engineering Experiment Station, organized in 1917, conducts researches in the field of engineering, co-operates with Engineering Societies, and publishes in bulletin form the results of its work. About one hundred engineering graduates devote their full time to engineering research at the Purdue Engineering Experiment Station. About \$600,000 have been expended during the last two and one-half years from funds provided by the American Railway Association for research on railway draft gears and brake equipment. The Engineering Extension Service carries the benefit of engineering teaching and research to persons and industries in various parts of the state. Last year direct help was given to groups totaling over 17,000 individuals.

It is fitting to say that Purdue University has clung rather closely to the purposes for which it was established. The main purpose of the institution has been to train men for service in the fields of engi-

neering, agriculture, and applied science; and at the present time there are nearly ten thousand graduates and nearly twice that number of former students engaged in technical and scientific pursuits all over the world.

FRATERNITIES

The following is a list of the thirty National Social Fraternities at Purdue University:

Acacia	Phi Kappa
Alpha Gamma Rho	Phi Kappa Psi
Alpha Tau Omega	Phi Kappa Sigma
Beta Sigma Psi	Phi Kappa Tau
Beta Theta Pi	Pi Kappa Alpha
Delta Alpha Pi	Pi Kappa Phi
Delta Sigma Lambda	Sigma Alpha Epsilon
Delta Tau Delta	Sigma Alpha Mu
Delta Upsilon	Sigma Chi
Delta Chi	Sigma Nu
Kappa Delta Rho	Sigma Pi
Kappa Sigma	Sigma Phi Epsilon
Lambda Chi Alpha	Theta Chi
Phi Delta Theta	Theta Xi
Phi Gamma Delta	Triangle

The following National Honorary Fraterinties have chapters on the Purdue campus:

Sigma Xi	Phi Lambda Upsilon
Tau Beta Pi	Tau Kappa Alpha
Scabbard and Blade	Sigma Delta Chi
Pi Tau Sigma	Alpha Zeta
Eta Kappa Nu	Kappa Delta Pi

BRIEF HISTORY OF TORQUE FRATERNITY

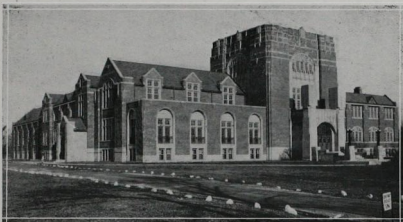
TORQUE FRATERNITY was founded in the spring of 1921 by R. J. Rhinehart, Ivan V. Walter, Richard Wahl, Abram Lorber, and Rex L. Reynolds. These men, prominent in the engineering schools, banded together for the purpose of setting up a new type of fraternity at Purdue University. The purpose of the new organization was to bring together in a fraternal group engineering students of superior ideals and scholastic ability who could maintain a uniformly high scholarship and at the same time participate in campus activities and athletics. Thus, high standards of college work could be emphasized, a closer bond could be formed between the faculty and the student, loyalty to the profession could be strengthened, and the engineering profession as a whole could be aided in a practical manner.

After a series of meetings the name "Torque" was chosen and a constitution was written. The constitution was submitted to the Purdue Faculty committee who accepted it and authorized the establishment of the fraternity. At this time a ritual was worked out under the guidance of faculty advisors, who had assisted the founders in forming the organization. Seven pledges were selected and meetings were held in the library until the end of the school year.

During the summer vacation a chapter house was leased and arrangements were made for completely furnishing the house. At the opening of the fall semester the members took up residence in the new home and set about building up the organization. During this school year Torque initiated seven Juniors, five Sophomores, five Freshmen, and three honorary members from the engineering faculty. At the end of the school year the scholastic ranking of the new organization was second among thirty-four fraternities. Of our members, Gray, Reynolds, and Simmons were elected to Tau Beta Pi, Reynolds was elected to Eta Kappa Nu, and we were represented in Debating Societies, Literary Societies, Purdue Student Union, Y. M. C. A., and Purdue *Exponent* Staff.

During the school year of 1922-1923 nine Sophomores and five Freshmen were initiated and two members of the faculty became honorary members. Our scholarship rank remained second place among all fraternities. Gray and Reynolds were elected to Sigma Xi, the highest honor given on the campus; Mathews, Osha, and Raynor

were elected to Eta Kappa Nu. We were represented this year in Boxing, Fencing, Gymnastics, Band, and Exponent. Others of our members were active in the A. I. E. E., A. S. M. E., Y. M. C. A., and Purdue Memorial Union.



Purdue Memorial Union Building

As the fraternity grew, its position became firmly established and succeeding years were even more successful. For more than six years Torque has been recognized for high scholastic standing, having with one exception been within four per cent of the leading fraternity. The selection of faculty members has proved very fortunate, for they have without exception been men who have ably assisted in the development of the fraternity.

Torque has been active in a social way without trying to compete with other social organizations on the campus. The founding of the fraternity is observed each Spring with a formal dance, and two or three other dances are held during the school year. Guest days are observed about once a month, and smokers are held on Dad's Day, Homecoming, and other occasions. Three years ago, an annual faculty smoker was instituted at the Chapter House for all members of the Engineering Faculty. This event is held before the Christmas holidays, and has always met with good response.

The scholarship record of Torque is one in which we may rightfully take pride. In addition to taking a prominent part in activities, we have maintained a house rank of third or higher among all fraternities on the campus for more than half of the time since Torque

was founded. Our high scholarship and participation in activities is further attested by the large number of our members who have been chosen to honorary fraternities. In the following list the number of our members in each honorary is given:

Sigma Xi	5
Tau Beta Pi	10
Scabbard and Blade	3
Pi Tau Sigma	4
Eta Kappa Nu	5
Phi Lambda Upsilon	8
Contour	1
Tau Kappa Alpha	1

We have always taken an interest in intra-mural as well as varsity athletics, and we have continued to be represented in the leading campus activities. We have constantly had contact with almost every activity on the campus.

ORGANIZATION

THE purpose of our organization as stated in our constitution is to "aid and encourage the engineering profession in every way possible". Membership is restricted to students of the engineering schools whose work is of good quality and who are in good standing. Honorary membership is conferred upon men who are actively engaged in the teaching of engineering subjects. The initiation fee is twenty-five dollars plus the cost of the pin.

The officers of the fraternity are President, Treasurer, Secretary, House Manager, Steward, and Membership Chairman. These offices are filled by upperclassmen and each officer has one or more assistants who are Sophomore or Junior members. The election takes place in April, and is by two-thirds majority. Under our present Chapter Constitution at least thirteen men are actively engaged in managing the house or organization, all of whom are responsible to the President.

The Fraternity is in good financial condition. All equipment has been paid for in full. Three years ago three lots were purchased with the intention of erecting a fraternity house at a later date. These lots are nearly half paid for and will be deeded to us this winter. In addition, the house has paid regularly into a savings account, and has built up a comfortable reserve.

We have an Alumni Association which has taken over the house building fund. Each graduating member is given the privilege of subscribing one hundred dollars to this fund. The Association takes care of these subscriptions and handles all details of the fund.



The Ross-Ade Stadium

In conclusion, we will say that we have striven to live up to the ideals upon which our fraternity was founded and have directed our efforts toward aiding the engineering profession in every way possible. We have chosen men for membership who have distinguished themselves as students and as participants in various student activities. Our members have played an important part in campus activities, honorary societies, and athletics at Purdue University.

Further, Torque is a well established, well organized fraternity, and is in excellent financial condition. It is a growing organization and each succeeding year finds Torque with a stronger influence on the Purdue campus. At one of the greatest engineering colleges in the United States we have built an engineering fraternity which we believe is worthy of membership in Theta Tau Fraternity.

TABLE II
SCHOLARSHIP AVERAGE OF TORQUE MEMBERS

Year	Compared with the Average of All Fraternity Men		
	Semester	Torque Ave.	All Fraternity Men
1921-22	First	82.41%	79.71%
	Second	83.42	80.77
1922-23	First	83.72	79.30
	Second	83.92	79.85
1923-24	First	82.47	77.50
	Second	83.34	79.05
1924-25	First	81.04	77.82
	Second	81.70	78.59
1925-26	First	80.03	76.73
	Second	81.55	77.13
1926-27	First	84.06	78.41
	Second	80.29	75.88



Walsmith, Benner, Arduser, Arduser, Boyd, Terrell, DeVaney
 Jewell, Van Meter, Curtis, Plummer, Myers, Mueller, Mossberg
 Rinehart, Kiovsky, Divan, Garman, Davenport, Fawcett, Kemp, Robbins
 Carson, Menaugh, Sanders, Burton, Solberg, Whitredge, McNeff

PERSONNEL OF TORQUE FRATERNITY

ACTIVE ROLL

HORACE W. ARDUSER, Chemical, '31, Kokomo, Indiana
Pistol Team, Indoor Baseball, Basketball.

MILTON H. ARDUSER, Mechanical, '31, Kokomo, Indiana
Pistol Team.

WILLIAM R. BENNER, Electrical, '30, Mays, Indiana
Fencing.

JAMES P. BOYD, Mechanical, '28, Greenfield, Indiana
Debris, Exponent, Football, A. S. M. E., Union.

ROBERT W. CARSON, Mechanical, '28, Indianapolis, Indiana
Tau Beta Pi, Pi Tau Sigma, Band, Pan Council, A. S. M. E.
House Treasurer.

H. E. CURTIS, Civil, '29, Mishawaka, Indiana
Cross Country, Track, Pan Council.

CARL N. DEVANEY, Electrical, '31, Arcadia, Indiana
Track, Basketball, Cross Country.

LOUIS S. DIVAN, Mechanical, '29, Clinton, Indiana
Wrestling, Football, Union, A. S. M. E.

EDMUND L. FAWCETT, Civil, '31, Kokomo, Indiana
Pistol Team, Debating.

HAROLD R. GARMAN, Electrical, '29, Mishawaka, Indiana
Football.

BERNARD JEWELL, Mechanical, '31, Kokomo, Indiana
Football.

CARROLL P. KEMP, Chemical, '30, Mishawaka, Indiana
Cross Country, Wrestling.

JOSEPH A. KIOVSKY, Civil, '28, Indianapolis, Indiana
Band, Y. M. C. A., Water Polo, House Steward.

JAMES F. MENAUGH, Electrical, '28, Mishawaka, Indiana
A. I. E. E., Union, Y. M. C. A., House President.

CLARENCE P. MCNEFF, Electrical, '30, Cloverdale, Indiana
Track, Basketball, Baseball.

CHARLES MOSSBERG, Chemical, '31, Kokomo, Indiana

THOMAS MUELLER, Civil, '29, Chicago, Illinois
A. S. C. E., Union, Y. M. C. A., House Manager.

ROBERT H. MYERS, Electrical, '30, Kewanna, Indiana
Cross Country, Basketball, Track.

LEIGH S. PLUMMER, Electrical, '30, Columbia City, Indiana
Cross Country, Fencing.

WILBUR E. ROBBINS, Chemical, Kokomo, Indiana
Tau Beta Pi, Phi Lambda Upsilon, Sigma Xi, Wilbur Scholar.

SYDNEY L. SMITH, Mechanical, '28, Versailles, Indiana
Baseball, A. S. M. E., Union, Y. M. C. A., House Secretary.

CHARLES F. TERRELL, Chemical, '31, Kokomo, Indiana
Basketball.

LOYD E. VAN METER, Electrical, '30, Grass Creek, Indiana
Track, Basketball.

JOE E. WALSMITH, Electrical, '29, Montpelier, Indiana
Wrestling, Debris Staff.

K. R. WHITREDGE, Mechanical, '31, Decatur, Indiana
Baseball.

HAROLD V. WRASSE, Electrical, '28, Mishawaka, Indiana
Golf Capt., A. I. E. E., Union, Y. M. C. A.

ALUMNI ROLL

Class of 1922

- R. P. WAHL, Y. M. C. A., Band, A. I. E. E.
R. J. RHINEHART, Y. M. C. A., A. I. E. E.
A. LORBER, Y. M. C. A., Union.
A. LOCHARD (deceased), Y. M. C. A., A. S. M. E., Union.
EARL HART, Irving Lit. Soc., A. S. M. E.
I. V. WALTER, Y. M. C. A., A. A. E.

Class of 1923

- H. O. MATHEWS, Football, Eta Kappa Nu.
DON WASS, A. I. E. E., A. A. E.
P. W. DUNCAN, Gimlet, Chem. Eng. Soc.
R. J. REYNOLDS, Tau Beta Pi, Eta Kappa Nu, Sigma Xi.
C. A. METZGAR, Human Eng. Soc.
B. R. JACKSON, Boxing, A. S. M. E.
W. E. GRAY, Wilbur Scholar, Tau Beta Pi, Pi Tau Sigma,
Sigma Xi.

Class of 1924

- W. B. WILBUR.
F. C. JONES, Human Eng. Soc., Union.
J. L. RAYNOR, Eta Kappa Nu, Human Eng. Soc., Pan Council.
D. J. WITHERS, Eta Kappa Nu, A. I. E. E.
C. H. OSHA, Eta Kappa Nu, Fencing Capt.

Class of 1925

- P. W. THOMPSON, Scabbard and Blade, Pistol Team.
R. E. SHEFFER, Phi Lambda Upsilon, Kappa Phi Sigma, American Chem. Soc.
H. E. GOTTBURG, Football, Baseball.
D. H. DOLMAN, Y. M. C. A.

C. S. HEGEL, Phi Lambda Upsilon.
F. C. HOSIMER, Y. M. C. A., Union.
M. V. KEELER, Eta Kappa Nu, Football, Pan Council.
R. F. DAVIS, Tau Beta Pi, Phi Lambda Upsilon, Catalyst.
N. F. HINDLE.
F. W. SCOTT, Tau Beta Pi, Phi Lambda Upsilon, Cross Country.
A. R. COWELL.
D. O. BROOKS, A. I. E. E., Chess Champion.
H. B. CURRENS, Union.

Class of 1926

H. H. DIETRICH, Swimming, Exponent, Radio Operator.
U. B. YEAGER, Scabbard and Blade, Catalyst, Phi Lambda Upsilon, Pan Council.
J. P. CHARLES, A. S. M. E., Union.
B. I. SMITH, Tau Beta Pi, Pi Tau Sigma, Exponent, Press Club.
E. E. MILLS, A. S. C. E., Union.
G. L. JACKSON, Tau Beta Pi, Contour, Gym Team Capt.

Class of 1927

Q. M. CRATER, Tau Beta Pi, Pi Tau Sigma, Scabbard and Blade, Tau Kappa Alpha, A. S. M. E., Sigma Xi.
W. A. NILES, Union, Band.
T. L. FRITZLEN, Catalyst, Union, Tennis.
W. S. DAVIS, A. I. E. E., Engineering Review.
H. O. MELOY, Tau Beta Pi, Phi Lambda Upsilon, Sigma Xi, Student Council, Wrestling.
L. R. RUSSELL, Baseball, Track, Cross Country.
WILBUR E. ROBBINS, Tau Beta Pi, Phi Lambda Upsilon, Sigma Xi, Wilbur Scholar.
H. J. MALONE, Phi Lambda Upsilon, Catalyst, Pan Council, Football, Wrestling.

FACULTY ROLL

ELBERT F. BURTON, M. E.
Asst. Professor of Mechanical Engineering

DRESSEL D. EWING, E. E.
Professor of Electrical Engineering

ALANSON D. TOPPING, B. S. E. E.
Professor of Electrical Engineering

WILLIAM B. SANDERS, M. S. M. E.
Assistant Professor of Applied Mechanics

HARRY L. SOLBERG, M. S. M. E.
Asst. Professor of Mechanical Engineering

NON-GRADUATE MEMBERS

HENRY PEARSON, Electrical '22.

OZRA G. WILLIAMS, Mechanical '23.

NIEL D. CAREY, Mechanical '24.

SYDNEY L. BARBER, Chemical '25.

OTIS G. CITES, Mechanical '25.

PAUL S. STEPHENSON, Civil '26.

F. S. SALLIER, '28.

WILLIS L. HUME, Civil '26.

MARION H. KAPPS, Mechanical '28.

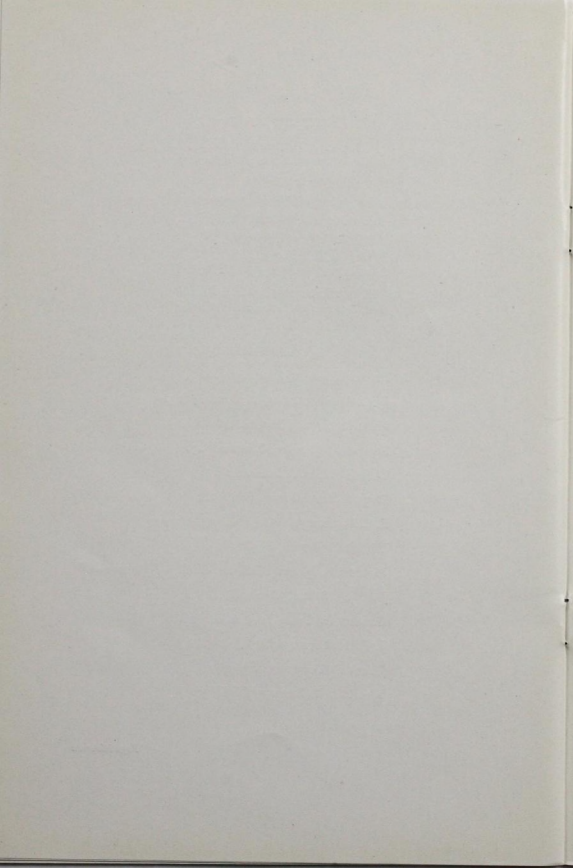
JOHN M. SCOTT, Chemical '28.

GEORGE E. OSHA, Mechanical '28.

J. E. COULTER, '29.

JAMES E. COULTER, '29.

WILLARD F. CONLEY, Civil '30.



RECOMMENDATIONS

The following representative group of recommendations are from men who have known Torque Fraternity for several years. The writers present the reputation of Torque Fraternity from different phases of University activities.

PURDUE UNIVERSITY LAFAYETTE, INDIANA Office of the Dean of Engineering

November 10, 1927.

To the Theta Tau Fraternity:

It is my understanding from the Torque Engineering Fraternity of Purdue University that it is petitioning for membership in your organization. I am glad to be able to give you the following information concerning this Fraternity:

The Torque Fraternity was organized seven years ago by a small group of engineering students who believed in combining scholarship with sociability. I have been in close touch with this fraternity since its organization and I am pleased to report it has maintained uniformly satisfactory standards as far as the scholarship and general quality of the members are concerned.

With the above in view I am convinced that you will make no mistake in giving favorable consideration to the petition of the Torque Fraternity.

Respectfully submitted,

A. A. POTTER,
Dean of the Schools of Engineering.

PURDUE UNIVERSITY LAFAYETTE, INDIANA School of Chemical Engineering

November 15, 1927.

To Whom It May Concern:

I am informed that Torque, of this institution, is applying for affiliation with a National fraternity.

I have been in fairly close touch with the above organization since its inception. It has been careful in choosing men of high grade scholastically and its membership ranks high from the standpoint of character and manly qualities.

Its scholarship standing for the last year was ninth in a list of thirty-three, with an average of 80.79%.

In my opinion, Torque is most worthy and will be a credit to any organization with which it affiliates.

H. C. PEFFER,
Head, School of Chemical Engineering.

PURDUE UNIVERSITY
LAFAYETTE, INDIANA
School of Mechanical Engineering

November 14, 1927.

National Officers of Theta Tau.

Gentlemen:—

I understand that the local members of the Torque Fraternity are petitioning your honorable body for a charter.

I have been intimately associated with the men who have made up the organization for the past two years and know them to be high class in every way, men of excellent scholarship, clean cut, outstanding chaps who have had a very important part in the maintaining of standards and student life of the University. I am sure your organization would make no mistake in carefully considering their petition.

Yours respectfully,

G. A. YOUNG,
Head, School of Mechanical Engineering.

PURDUE UNIVERSITY
LAFAYETTE, INDIANA
SCHOOL OF ELECTRICAL ENGINEERING

November 23, 1927.

Theta Tau Fraternity,
101 Engineering Hall,
Iowa City, Iowa.

Subject: Recommendation of Torque Fraternity at Purdue University.

Gentlemen:

Upon the request of Senior members of the Torque Fraternity of Purdue University and with the suggestion of Professors A. N. Topping and D. D. Ewing of the staff of this School, who I believe are members of the Torque Fraternity, the writer takes pleasure in behalf of the School of Electrical Engineering of recommending this Engineering Fraternity to Theta Tau.

We have naturally followed the record of this Fraternity and the personnel of its membership since its establishment at Purdue with a great deal of interest and find that it is an organization of high standing which confines its membership to the Engineering Schools. Its members are apparently very carefully selected and are a representative group among the more able Engineering students in the University. The interest of the members of the Faculty in this organization is a sufficient indication of the future success under their direction of the Torque Fraternity.

From the standpoint of the School of Electrical Engineering we trust that the affiliation of this organization with Theta Tau may be consummated in the near future, as it is our belief that it will be to the mutual advantage of both your organization and Torque if such an arrangement can be completed.

Very truly yours,

C. FRANCIS HARDING
Head, School of Electrical Engineering.

CFH:ACS.

PURDUE UNIVERSITY
LAFAYETTE, INDIANA

M. L. Fisher, Dean of Men
Engineering Administration Building

H. M. Baldwin, Advisor to Foreign
Students, University Hall

November 9, 1927.

National Fraternity of Theta Tau,
Chicago, Illinois.

Gentlemen:

I have been asked to write a statement concerning the standing of Torque, a local fraternity, which I understand is making overtures to you for nationalization.

The Torque fraternity has been on the Purdue campus for several years and during that time has always maintained a good standing. For the last four semesters, in a field of 33, they have ranked seventh, fifth, second, and ninth in scholarship. Their membership has comprised some of the best men in the University who have been active in the various activities of the student body. Mr. Q. M. Crater, with whom, I believe, a good deal of the correspondence has been negotiated, was one of the outstanding students of our last graduating class and he is but typical of a number of other men in the organization. The attitude of this organization towards morals and the rules of the University has been without question and I am willing to say that as far as my knowledge goes they are a very excellent body of young men and I believe they will be a credit to your organization if you decide to nationalize them.

Very truly yours,

M. L. FISHER,
Dean of Men.

L. R. Lowe, President
J. D. Stillwell, Vice-President

R. B. Davenport, Secretary
C. E. Backus, Treasurer

MEN'S PAN-HELLENIC COUNCIL

Purdue University
WEST LAFAYETTE, INDIANA

November 15, 1927.

Theta Tau Fraternity:

I wish to offer the hearty recommendation of the Men's Pan Hellenic Council to the Torque Fraternity, which is petitioning your organization. I think that this fraternity enjoys the highest standing of any local organization on the campus. Their choice of men is very good, the members are active in campus work, and their scholarship is high. These men would be perfectly capable of carrying on your high standards and ideals.

In addition, we would feel highly honored to receive a chapter of Theta Tau at Purdue. Certainly a university with as high an engineering standing as Purdue has, merits a chapter of Theta Tau. If I can be of any further service to you in deciding on this organization, I will enjoy doing so. Again I offer our sincere recommendation.

Respectfully,

L. R. LOWE.

Page Twenty-three

HOUSE OFFICERS

The Present House Officers Are:

JAMES F. MENAUGH.....	<i>President</i>
ROBERT W. CARSON.....	<i>Treasurer</i>
JOSEPH A. KIOVSKY.....	<i>Steward</i>
THOMAS MUELLER.....	<i>House Manager</i>
SYDNEY L. SMITH.....	<i>Secretary</i>

NATIONALIZATION COMMITTEE

JAMES F. MENAUGH

ROBERT W. CARSON



