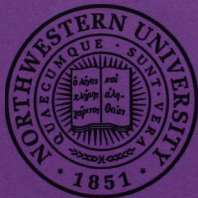


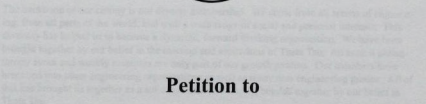
# Northwestern University



Evanston, Illinois



Mr. Schreyer, Page 2  
 President Clinton  
 Thank You Programme  
 655 Craig Road, Suite 124  
 St. Louis, Missouri 63105-1171

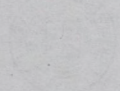


## Theta Tau

## August 1995

1000000000

1000000000



1000000000

1000000000

1000000000

1000000000





## NORTHWESTERN UNIVERSITY COLONY OF THETA TAU

---

2145 SHERIDAN ROAD EVANSTON, IL 60208-3102

August 1, 1995

Mr. Robert E. Pope, P.E.  
Executive Director  
Theta Tau Professional Engineering Fraternity  
655 Craig Road, Suite 128  
St. Louis, Missouri 63141-7132

Dear Mr. Pope:

On behalf of my fellow members, it is my true honor to present to you and your brothers the Northwestern University Colony of Theta Tau petition for chapter status. As the current president and one of the more recent initiates to our colony, I am very proud to introduce our organization. Since our inception as a colony in 1993, we have become a steadily growing force on campus. More importantly, in that time we have come to a greater understanding of what it means to be a part of Theta Tau. We have built a strong foundation based on the values and ideals of the fraternity. It is with this foundation that we hope to begin and expand our chapter in the years to come.

The backbone of our colony is our diverse membership. We come from all arenas of engineering, from all parts of the world, and with a wide range of social and personal interests. This diversity has helped us to become a dynamic, forward-thinking organization. We have been brought together by our belief in the mission and aspirations of Theta Tau. An annual philanthropy event and weekly meetings are only part of our growth process. Our members have branched into other engineering organizations as well as many non-engineering groups. All of this has brought us together as a solid and cohesive family, bonded together by our belief in Theta Tau.

The Northwestern University Colony of Theta Tau is very proud of the progress we have made in the past two years. We are driven toward continuing this improvement as a chapter of Theta Tau and anxiously await the time when we may all be true brothers.

Sincerely,

Michael McLaughlin  
President



## NORTHWESTERN UNIVERSITY COLONY OF THETA TAU

---

2145 SHERIDAN ROAD EVANSTON, IL 60208-3102

July 29, 1995

Mr. Robert E. Pope, P.E.  
Executive Director  
Theta Tau Professional Engineering Fraternity  
655 Craig Road, Suite 128  
St. Louis, Missouri 63141-7132

Dear Mr. Pope:

It gives me great honor and joy to issue you, and all brothers of Theta Tau, our bid for chapter status from the Northwestern University Colony. Since the onset of this school year, the number one goal stated by all of my brothers has been to achieve this distinction. We have enjoyed and taken part in the benefits and responsibilities of brotherhood. Our association to date with the national Fraternity has been nothing less than fruitful for our growth and success; we take part in the understanding of the people of Theta Tau and the principles in which its brothers have been entrusted for over ninety years.

We understand the commitment that fraternity life requires and have been successful in merging our individual interests and abilities to produce enjoyable social and professional activities. Our annual TECHGOLF philanthropy event, which saw our engineering facility transformed into a miniature golf course, should witness an increase in both size and participation in future years. We have met the challenges of growth with strong leadership and enthusiasm. Our acceptance on this campus grows greater every day and with every new event sponsored.

The Northwestern University Colony believes it can render many resources to the Fraternity at large. Located in a beautiful suburb of Chicago, we have already hosted one Central Regional Conference to date. We have participated in every major event hosted in this region and plan to send a strong assembly to this summer's National Conference. We look forward to the Fraternity's vote on our petition.

Sincerely yours,

*Jennifer Lisiak*  
Jennifer Lisiak  
Vice-President

We, the members of the Northwestern University Colony of Theta Tau, do hereby petition Theta Tau Professional Engineering Fraternity for official chapter status.

We, the undersigned brothers, hereby pledge our petition of membership. We are all currently pursuing degrees in engineering at Northwestern University, and have no affiliation with any organization considered to be competitive with Theta Tau. As active members of the Northwestern Colony, we pledge our commitment to Theta Tau.

Michael McLaughlin  
Michael McLaughlin  
President

Scott Day  
Scott Day  
Treasurer

Rachel Zajano  
Rachel Zajano  
Social Chair

Khairul Azizbadli  
Khairul Azizbadli

Danny Hanna  
Danny Hanna

Timothy Kubiak  
Timothy Kubiak

Erica Newberry  
Erica Newberry

Margaret Rutterer  
Margaret Rutterer

Jeffrey Sommerfeldt  
Jeffrey Sommerfeldt

Jennifer Lisiak  
Jennifer Lisiak  
Vice President

Catherine Starr  
Catherine Starr  
Corresponding Secretary

Gary Valley  
Gary Valley  
Historian

Jacob Greenberg  
Jacob Greenberg

Chris Jones  
Christopher Jones

Melinda Levinson  
Melinda Levinson

Kimberly Reckelhoff  
Kimberly Reckelhoff

Lawrence Schnitzer  
Lawrence Schnitzer

Mark Stanton  
Mark Stanton

Fei Yeh  
Fei Yeh

Sarah Meier  
Sarah Meier  
Recording Secretary

John Modjeski  
John Modjeski  
Rush Chair

Purusharth Agrawal  
Purusharth Agrawal

Mohd Ridzuan Hadrun  
Mohd Ridzuan Hadrun

Parag Kshatriya  
Parag Kshatriya

Arlene Martin  
Arlene Martin

Shaunak Roy  
Shaunak Roy

Subhro Sen  
Subhro Sen

Victor Su  
Victor Su

## Northwestern University — A Brief History

Northwestern University was established in 1851 with the goal of creating an institution of "the highest order of excellence" to serve the people of the original Northwest Territory. This area includes most of what is now known as the Midwest portion of the country: Ohio, Indiana, Illinois, Michigan, Wisconsin, and part of Minnesota. On the date of its founding, Northwestern had no faculty, students, campus, or buildings and only \$9.92 in its treasury.

In 1853, as a site for the new University, the founders purchased a 379-acre tract of farmland along Lake Michigan 12 miles north of Chicago. The town that developed around the Northwestern campus was named Evanston to honor one of the University's most prominent founders, John Evans. Evans was a well-known physician and researcher, as well as a real estate speculator, railroad builder, and governor of the Colorado Territory. Evans was a continuous contributor of his time, energy, and money to Northwestern, serving as the founding chair of the board from 1851 until his death in 1897.

Having completed its first building in the fall of 1855, Northwestern's College of Liberal Arts opened its doors with 2 faculty members and 10 male students. A pioneer in the education of women, Northwestern first enrolled female students in 1869. By the turn of the century, Northwestern was composed of six undergraduate and graduate professional schools, including the schools of law, dentistry, and medicine. The school enrolled 2,700 students, covered 680 acres in both Evanston and Chicago, and boasted an annual budget of over \$200,000.

With the establishment of the graduate school in the year 1910, Northwestern adopted the German university model of providing graduate as well as undergraduate instruction and stressing research along with teaching. Today, Northwestern is a major private university with 12 academic divisions located on two lakefront campuses, 1,770 full-time faculty and 13,582 full-time students, approximately 7,400 of whom are undergraduates on the Evanston campus, and an annual budget exceeding \$640 million.

Northwestern is a member of the Association of American Universities—the 28 private and 28 public universities that constitute the nation's most distinguished educational institutions as defined by the quality and scope of their research and graduate programs. Recent assessments of the quality of faculty research and doctoral programs at Northwestern indicate its high ranking among research and doctorate programs nationwide. However, a factor that distinguishes Northwestern from other major research universities is that all faculty members not only perform research but also teach, the majority at the undergraduate as well as the graduate level. No university of comparable size has a research faculty that provides both such a wide range of academic programs and such direct access through instruction.

## McCormick School of Engineering and Applied Sciences

The Northwestern University McCormick School of Engineering and Applied Sciences was established in 1909, in a small building, Swift Hall. In 1939, through a gift from Walter P. Murphy, the Technological Institute was built. To this day, the school has been dedicated to attain "a position second to none" in education and research in the areas of engineering and applied science. In 1989, a gift from the Robert R. McCormick Charitable Trust established the Robert R. McCormick School of Engineering and Applied Science of the Technological Institute.

The physical size of the Technological Institute, or "Tech," is greater than 750,000 square feet and growing daily. The building is currently undergoing a \$92 million, 10-year renovation and is expected to be completed by the year 2000. Most engineering departments are housed within the walls of Tech, while some have been moved to newer extensions of the building, such as the Materials and Life Sciences Building. The Technological Institute and its extensions have excellent educational and research facilities. The Seeley G. Mudd Library for Science and Engineering, adjoining the Technological Institute, is an integrated and centralized collection serving engineering, applied mathematics, astronomy, biology, biochemistry, chemistry, and physics.

The McCormick School of Engineering and Applied Sciences is funded to provide for ongoing research by the NSF Center for Advanced Cement-Based Materials, the Center for Catalysis and Surface Science, the Center for Engineering Tribology, the NSF Center for High-Temperature Superconductivity, the Information Technology Center, the Institute for the Learning Sciences, the Center for Manufacturing Engineering, the Materials Research Center, the Center for Quality Engineering and Failure Prevention, and the Steel Resource Center.

There are approximately 1,300 undergraduate and 950 graduate students pursuing degrees in applied mathematics, biomedical engineering, chemical engineering, civil engineering, computer engineering, computer science, electrical engineering, environmental engineering, industrial engineering, manufacturing engineering, materials science and engineering, and mechanical engineering. Graduate programs of study are available in all of the above fields as well as in theoretical and applied mechanics, manufacturing management, and engineering management.

## Northwestern University Colony History

The establishment of the Northwestern University Colony of Theta Tau began during the spring of 1993 by Theta Tau alumnus Jon Lea. A graduate student in Mechanical Engineering at NU, Jon saw potential within the engineering school for supporting a chapter of Theta Tau. Working with fellow alums Michael Abraham and Jason Raffaele, as well as the Central Office, Jon contacted each eligible engineering student by mailing them a letter and pamphlets describing the fraternity, as well as a response card. In early April, the three alumni came to NU to interview potential candidates as members of a local engineering fraternity. The aim of this local fraternity was to become a chapter of Theta Tau Professional Engineering Fraternity. The next day, April 3, 1993, Theta Tau Nu, a local professional engineering fraternity, was formed. With the guidance of the alumni, officers were appointed and bylaws were drafted and approved. The President and Vice-President of Theta Tau Nu were Ron Rothman and Francis Nuthalapaty.

After that initial meeting, we held weekly general and officer meetings in the Mechanical Engineering Conference Room inside the Technological Institute. Our goal was to turn our young group into a closely-knit organization that would be unique on Northwestern's campus. We wanted to involve professional, academic, philanthropic and social activities in our schedule. Including this variety of interests would make our group one-of-a-kind on a campus filled with organizations focused on only one area.

During the first quarter, we held a number of movie-munchie gatherings and attended a Cubs game. Through these activities, we proved to ourselves and each other that the social aspects of the colony were not difficult to attain. But life in our colony was certainly not all fun and games. One of the major orders of business was to find ourselves a faculty advisor. After two weeks of researching potential candidates and one week of nominations, a vote was taken. It was decided that Professor Paul Cooper of the Electrical Engineering and Computer Science department was our first choice. Professor Cooper was invited to be our faculty advisor and has been an important part of the growth and success of our organization.

As that quarter was coming to an end, we had T-shirts made for each member and handed out a facebook with summer addresses, phone numbers, pictures of all members, and articles about Theta Tau Nu that had appeared in *The Daily Northwestern*. We also decided that the petition for colony status should be finished and submitted to the national officers prior to the national conference. In early August, Brother Gabe Moy travelled to Phi chapter to submit our petition to Theta Tau for approval.

Needless to say, our petition was accepted, and the 1993-1994 school year was begun with our sights set on our upcoming colony installation. We continued to hold weekly meetings, where we planned a few social gatherings and the details of the installation. On November 13, 1993, 13 members were initiated into the Northwestern Colony by members of the Central Office. The weekend's activities included a dinner with national officers and colony-elect members at a local pizzeria, a tailgate prior to the Iowa-Northwestern football game, and a banquet following the installation ceremony. Our colony was thrilled to see members from around the Central Region visit Evanston to help celebrate our initiation.

Also during this quarter our first officer elections were held. Brother Chris Jones was elected President, and Francis Nuthalapaty was re-elected Vice-President. Our new officers adapted quickly to help the colony accomplish many things over the next few months. In addition, four brothers represented the Northwestern colony at the Fall Central Region Convention held at Omicron chapter.



Immediately following initiation, the colony worked to strengthen rush efforts before the holiday break. The entire colony participated in information sessions, an informal dinner, and a game of wallyball at NU's sports facility. Upon returning to school in January, rush consisted of a busy two weeks, during which five events were held, spanning the topics of professional development, sporting events, and food. At the end of the exhausting but exciting rush period, the Northwestern Colony had increased its membership by 62%, to 21 total brothers and pledges.

The other primary focus of Winter quarter was the development of a brand-new philanthropy event. We wanted to be involved in the community in a way that was distinctly Northwestern, and obviously associated with engineering. This project would be one that involved Evanston and the entire university, but that also created a name for Theta Tau. What was created was TECHGOLF. TECHGOLF involved the construction of a working nine-hole mini-golf course within the confines of Tech. All Northwestern organizations were invited and encouraged to build a golf hole in any manner they wished. In particular, many of the holes were designed as an advertisement for the sponsoring group. The NU colony pledge class also built one hole as part of their pledge education program. As a player walked from room to room playing the course, s/he could witness the variety of organizations on campus. Each organization's creativity and ability to work with wood (and any other materials) was highly visible in this fun event. The course was opened to the Evanston and NU communities to come and play for a \$1 donation. The proceeds of TECHGOLF went to the Howard Area Community Center, which benefits senior citizens in the Evanston area. The organization and implementation of this event was very complicated and lengthy, but also very recreational and rewarding. Donations of supplies and prizes were assembled from Chicago and Evanston businesses, and the event was advertised around campus as part of National Engineer's Week. In all, the first TECHGOLF was very successful.

Even though TECHGOLF occupied much of our time and energy, we found time for other activities, too. There was rush, a formal, participation in the campus-wide philanthropy Dance Marathon, and initiation of our newest members. With all we accomplished in the winter quarter of 1994, we were impressed with our abilities to work together as a group.

Our efforts did not end after Spring Break, however. During this time, we held officer elections again, and welcomed Rachel Zajano as President, and Danny Hanna as Vice-President. Spring rush was held, a colony camping trip was organized, and a date party led couples around the sights of Evanston and Chicago. The Central Region Conference was also held at Northwestern, and it offered yet another chance to learn about and learn from other chapters in the area. At the very end of the quarter, our colony initiated its Spring pledge class. This time of the year was bittersweet, however, because it also meant the graduation of five of our most valued brothers. All five seniors were highly instrumental to the success and growth of our group, and we knew their presence would be missed. Brothers Ron Rothman, Francis Nuthalapaty, Gabe Moy, Anish Mehta, and Sanjay Saxena were, respectively, the President, Vice-President, Corresponding Secretary, Rush/Social Chair, and Professional Development Chair of Theta Tau Nu.

During the summer of 1994, Brothers Jennifer Lisiak and Rachel Zajano travelled to Minneapolis, Minnesota for the National Convention at Alpha Chapter. This was yet another excellent opportunity to meet and learn from other chapters and colonies of Theta Tau. Both brothers returned to school highly motivated and energized with ideas and goals for the upcoming year. We kicked off Fall rush with a tailgate before one of the NU home football games. The game was a typical disappointment, but fortunately our rush efforts were not. The colony decided to try an different approach to rush for the 1994-1995 school year: instead of a short, intense program we planned activities throughout the quarter. The detailed



## Northwestern University Colony History — Continued

schedule was drawn up before the quarter began, and was handed out at Tech activities during New Student Week. The rest of rush included a professional development event, a Founder's Day celebration at Brother Zajano's apartment, a number of sporting events, and a spaghetti dinner at Brother Chris Jones' apartment. Rush was very successful, and our colony boasted nine great pledges at the close of Fall quarter.

During the winter quarter our efforts were turned, once again, to TECHGOLF and Dance Marathon. New President Larry Schnitzer helped guide the group to success in both of these events, as well as a roadtrip to Xi Chapter in Madison. We were proud to welcome Student Member Nicholas Croce and Colony Advisor Scott Wurms to the Chicago area and Northwestern during this time, and they accompanied our members and pledges to Madison.

During this most recent quarter, Spring, officer elections were held again, as were rush, initiation, and graduation. Brothers Scott Day and Jennifer Lisiak were elected our new President and Vice-President. Because we were losing members due to graduation, it was important for younger brothers, including new initiates from the Winter pledge class, to step up and assume responsibility for the future of our group. This has happened rapidly, and we have demonstrated to ourselves our capacity to respond, as individuals and as a group, to change that is fundamental in all organizations.

Over the years, we have continued to learn, as a group, how to accomplish many of our initial goals that we identified in the spring of 1993. As always, there is much more to learn. As we approach another school year, the brothers of the Northwestern University Colony are looking to rely on past successes and failures, the excitement of future opportunities yet unknown, and the support of the network of Theta Tau brothers to help us grow and achieve our ever-expanding goals. We, the brothers of the Northwestern University Colony of Theta Tau, eagerly look forward to years of learning and growing as brothers of a Chapter of Theta Tau.

### **Michael McLaughlin**

- 711 Bent Ridge Lane  
Barrington, IL 60010
- Junior, graduating June 1997
- Industrial Engineering
- 3.38 GPA
- President — current
- Co-op Program — Bell & Howell Co.
- pmv062@lulu.acns.nwu.edu



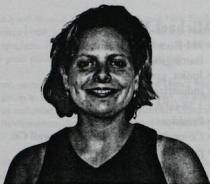
### **Jennifer Lisiak**

- 1845A N. Pulaski Street  
Milwaukee, WI 53202
- Sophomore, graduating June 1997
- Chemical Engineering  
(Environmental)  
Theme: Spanish
- 2.53 GPA
- Vice President — current  
Rush Chair — Sept. 1994 to April 1995  
President, Pledge Class Alpha
- Intramural Floor Hockey  
Co-ed Basketball, Volleyball, Soccer  
Residence Hall President  
Residence Hall Assoc. — Vice-President  
Dance Marathon Dancer, 1995
- jlisiak@merle.acns.nwu.edu



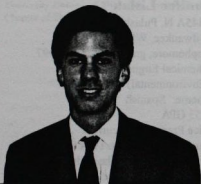
### **Sarah Elyse Meier**

- 12 Pleasantville Road  
Ossining, NY 10562
- Pre-Senior, graduating June 1996
- Industrial Engineering
- 2.82 GPA
- Recording Secretary — current  
Charter Member of NU Colony
- Kappa Delta Sorority  
Co-op Program — Bell & Howell Co.
- Raquetball, Tennis
- [semeier@casbah.acns.nwu.edu](mailto:semeier@casbah.acns.nwu.edu)



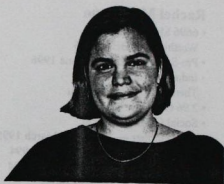
### **Scott M. Day**

- 1512 Ploma Drive  
Manchester, MO 63021
- Freshman, graduating June 1998
- Environmental Engineering
- 3.35 GPA
- Treasurer — current
- American Society of Civil Engineers  
Society for Environmental Engineering
- Arts Alliance — Production Assistant  
Engineering Student Council  
Intramural Basketball, Floor Hockey
- [smd221@lulu.acns.nwu.edu](mailto:smd221@lulu.acns.nwu.edu)



### **Catherine Starr**

- 2641 E. Beverly Road  
Shorewood, WI 53211
- Freshman, graduating June 1998
- Industrial Engineering
- 3.27 GPA
- Corresponding Secretary — current
- Northwestern University Marching Band
- cms843@lulu.acns.nwu.edu

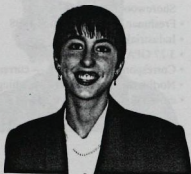


### **John Modjeski**

- 308 E. Iroquois  
Kentland, IN 47951
- Junior, graduating June 1997
- Industrial Engineering
- 3.64 GPA
- Rush Chair — Current
- Co-op Program — Bell & Howell Co.
- Guitar, Coffee, Doughnuts
- jomo@merle.acns.nwu.edu

### **Rachel M. Zajano**

- 6696 Markwood Street  
Worthington, OH 43085
- Pre-Senior, graduating June 1996
- Industrial Engineering  
Theme: Women's Studies
- 2.96 GPA
- Social Chair — current  
Pledgetrainer — January to March 1995  
President — April to November 1994  
Treasurer — April 1993 to April 1994  
Charter Member of NU Colony
- Institute of Industrial Engineers — Prof.  
Development Chair, Co-op Chair  
Society of Manufacturing Engineers  
Society of Women Engineers  
Residence Hall Treasurer, Activities Chair
- Co-op Program — United Parcel Service  
Student Mgr. — Marriott Food Services  
Women in Leadership Committee  
Reading, Music, Crocheting
- rmzaj@casbah.acns.nwu.edu



### **Gary Valley**

- 4731 Willow Creek Lane  
Sheboygan, WI 53083
- Freshman, graduating June 1999
- Computer Science
- 2.91 GPA
- Historian — current
- glv842@lulu.acns.nwu.edu



### **Purusharth Agrawal**

- 7 Chrissy Lane  
Sandwich, IL 60548
- Senior, graduating June 1995
- Biomedical Engineering  
(Electrical Instrumentation)
- 3.55 GPA
- Former Professional Development Chair
- Indian Student Association  
Alpha Phi Omega  
Dance Marathon
- pagrawal@casbah.acns.nwu.edu

Photo  
Not

Available

### **Khairul Emran Azizbadli**

- 32 Jalan Pusara Taman Jaya  
20400 K. Terengganu  
Malaysia
- Senior, graduating June 1995
- Chemical Engineering  
(Chemical Processes)
- 3.10 GPA
- Charter Member of NU Colony
- emran@casbah.acns.nwu.edu

Photo  
Not  
Available

## **Jacob Greenberg**

- 9200 Bennett Valley Road  
Glen Ellen, CA 95442
- Freshman, graduating June 1999
- Mechanical Engineering  
Theme: Spanish
- 3.04 GPA
- In-line Skating Club  
Camping, Music, Computers
- greenbug@nwu.edu



Photo  
Not  
Available

## **Mohd Ridzuan Hadrun**

- Lot 976, Kg. Pasir Pandak  
32020 Sitiawan, Perak  
Malaysia
- Senior, graduating June 1995
- Mechanical Engineering  
(Manufacturing)
- 2.90 GPA
- Historian — April 1994 to April 1995  
Pledgetrainer — January to March 1994
- American Soc. of Mechanical Engineers
- Malaysian Club  
A&O Films  
Biking
- mhadrun@casbah.acns.nwu.edu



### **Danny Hanna**

- 7800 Nordica 2B  
Niles, IL 60714
- Junior, graduating May 1996
- Chemistry
- 3.10 GPA
- Vice-President — April to Nov. 1994
- dhanna@orion.it.luc.edu



Photo  
Not  
Available

### **Christopher M. Jones**

- 2215 Country Club Road  
Woodstock, IL 60098
- Senior, graduating June 1995
- Electrical Engineering  
(Communication & Control Systems)  
Minor: Business Institutions Program
- 3.15 GPA
- Treasurer — April 1994 to April 1995
- President — Nov. 1993 to April 1994
- Calendar Man — April to Nov. 1993
- Charter Member of NU Colony
- Inst. of Electrical & Electronic Engineers
- Minority Eng. Opportunity Program tutor
- Northwestern Volunteer Network
- mjones@merle.acns.nwu.edu

### **Parag Kshatriya**

- 9809 Glendale Road  
Niles, IL 60714
- Sophomore, graduating June 1997
- Mechanical Engineering  
(Manufacturing)
- 3.15 GPA
- Indian Student Assoc. — Vice President
- Alpha Phi Omega
- [parag@nwu.edu](mailto:parag@nwu.edu)

Photo  
Not  
Available



### **Timothy Thomas Kubiak**

- 7416 S. Harrison Way  
Littleton, CO 80122
- Sophomore, graduating June 1997
- Electrical Engineering
- 3.30 GPA
- Social Chair — Nov.1994 to April 1995
- Music
- [tim@merle.acns.nwu.edu](mailto:tim@merle.acns.nwu.edu)

### **Melinda Levinson**

- 47 Clive Street  
Metuchen, NJ 08840
- Pre-Senior, graduating December 1995
- Electrical Engineering  
Theme: Jewish Studies
- 2.91 GPA
- Chi Omega Sorority  
Hillel — Jewish women's discuss'n group  
Co-op Program — Bell & Howell Co.
- msl@nwu.edu



### **Arlene R. Martin**

- 53 Stone Creek Drive  
Lemont, IL 60439
- Senior, graduating June 1995
- Biomedical Engineering  
(Transport Processes)
- 2.73 GPA
- Pledgetrainer — April to June 1995  
Corr. Sec. — Nov. 1994 to April 1995  
Social Chair — April 1994 to Nov. 1994  
Recording Sec. — Apr. 1993 to Apr. 1994  
Former Professional Development Chair  
Charter Member of NU Colony
- Delta Zeta Sorority  
Varsity Dance Team  
Student Blood Services  
Dance Marathon Volunteer  
Wildcat Council
- amartin@merle.acns.nwu.edu



### **Erica Newberry**

- 6102 E. San Bernardino  
Tuscon, AZ 85715
- Sophomore, graduating June 1997
- Mechanical Engineering  
(Manufacturing)  
Theme: Spanish
- 2.70 GPA
- Society of Women Engineers  
American Soc. of Mechanical Engineers
- Backpacking, Reading
- [erican@merle.acns.nwu.edu](mailto:erican@merle.acns.nwu.edu)



### **Kimberly L. Reckelhoff**

- 177 S400W  
Jasper, IN 47546
- Sophomore, graduating June 1997
- Psychology
- 2.89 GPA
- Recording Sec. — April to Nov. 1994
- [kimr@merle.acns.nwu.edu](mailto:kimr@merle.acns.nwu.edu)

### **Shaunak Roy**

- 3005 Polly Lane  
Flossmoor, IL 60422
- Freshman, graduating June 1997
- Chemical Engineering  
(Biomedical Engineering)
- 3.61 GPA
- sro479@lulu.acns.nwu.edu



### **Margaret Rutterer**

- 473 Doral Drive  
St. Louis, MO 63122
- Freshman, graduating June 1999
- Chemical Engineering
- 2.87 GPA
- Alpha Chi Omega Sorority —  
Fundraising Chair
- Graffiti Dancers
- NU Dance Ensemble
- University Alliance for Life
- mmr158@lulu.acns.nwu.edu

### **Lawrence Adam Schnitzer**

- 361 Humboldt Drive North  
Henderson, NV 89014
- Sophomore, graduating June 1997
- Mechanical Engineering  
Theme: Spanish Language
- 2.80 GPA
- President — November 1994 to Apr. 1995  
Corresponding Sec. — April to Nov. 1994
- Marshall J. Becker Honor Society
- Residence Hall Government  
Residence Hall Rep. for Hillel Foundat'n
- schnitz@nwu.edu



Photo  
Not  
Available

### **Subhro Sen**

- 8502 Timber Hill Lane  
Potomac, MD 20854
- Junior, graduating June 1996
- Biomedical Engineering/  
Electrical Engineering  
(Computer Applications)
- 3.42 GPA
- Indian Student Association  
Network Operations Center Analyst
- sen@nwu.edu

## Northwestern University Colony Advisor

### Jeffrey P. Sommerfeldt

- 5695 N. 40 Street  
Milwaukee, WI 53209
- Sophomore, graduating June 1997
- Mechanical Engineering  
(Automotive)
- 2.52 GPA
- Vice-President — Nov. 1994 to Apr. 1995
- Intramural Sports
- jsommer@merle.acns.nwu.edu



### Mark E. Stanton

- 10106 Chevy Chase  
Houston, TX 77042
- Senior, graduating June 1995
- Electrical Engineering  
(Communication and Control Systems)
- 3.79 GPA
- Charter Member of NU Colony
- Tau Beta Pi
- Eta Kappa Nu
- mstanton@merle.acns.nwu.edu



### **Victor Su**

- 56-15 228 Street  
Bayside, NY 11364
- Senior, graduating June 1995
- Chemical Engineering/  
Industrial Engineering
- 3.10 GPA
- Charter Member of NU Colony
- Institute of Industrial Engineers  
American Institute of Chemical Engineers  
Omega Chi Epsilon
- hannibal@casbah.acns.nwu.edu

Photo  
Not  
Available



### **Fei I. Yeh**

- 1418 South, 1100 East, #3  
Salt Lake City, UT 84105
- Freshman, graduating June 1998
- Biomedical Engineering/  
Electrical Engineering
- 3.75 GPA
- Professional Development Chr. — current
- ACNS Consultant
- fiy894@lulu.acns.nwu.edu

## Northwestern University Colony Advisor

Dr. Paul Cooper has been the advisor for the Northwestern colony since its start as Theta Tau Nu. A professor in the Electrical Engineering and Computer Science department, Dr. Cooper was invited to be our advisor after a few members had him as a professor. Brothers Sarah Meier and Rachel Zajano were impressed with his wit, humor, warm personality, and ability to teach "Introduction to Computer Programming." Dr. Cooper was initiated with the original colony members, and remains an important part of our group.

Born in Canada, Dr. Cooper is a United States permanent resident. He attended the University of British Columbia for his two undergraduate degrees in Electrical Engineering and Computer Science, and received his Masters and Doctoral degrees from the University of Rochester in Rochester, New York. The topic of his doctoral dissertation was "Parallel Object Recognition from Structure."

Dr. Cooper has held a number of positions with different companies and universities, starting as a computer programmer with Crown Forest Industries in Vancouver, British Columbia. After that he spent a summer in the Netherlands working for N.V. Phillips as a software engineer. After positions as a software researcher, research analyst, and a research and teaching assistant at other companies and universities, Dr. Cooper has worked as an Assistant Professor in the Department of Electrical Engineering and Computer Science at Northwestern since 1989. He is a faculty fellow at The Institute for the Learning Sciences (ILS) at NU, and director of The Intelligent Perception and Action Laboratory within ILS.

In his research, Dr. Cooper concentrates on robotic and computer "systems that interact intelligently with the world." His work with artificial intelligence, high- and low-level computer vision, connectionist networks, uncertain inference, and constraint satisfaction have placed Dr. Cooper in the forefront of research in this area. His credentials include more than 30 published technical papers and 15 invited talks, where he has spoken on topics ranging from "Learning to Integrate Visual Information Across Eye Movements," to "Tinkertoy Recognition." Dr. Cooper has recently been in the newspapers, including the *Chicago Tribune* and *The Christian Science Monitor*, for his work with robotics and artificial intelligence.

Dr. Cooper is a member of many professional organizations, including the American Association for Artificial Intelligence, the Cognitive Science Society, and the Institute for Electrical and Electronic Engineers. He is a reviewer for the National Science Foundation, the International Journal of Computer Vision, and 5 other organizations. The funding for his research totals more than \$1,400,000 from various sources.

Dr. Cooper resides in Evanston with his wife, 2 daughters, and dog. His primary hobby is curling, where he is the current Illinois State runner-up. He can be seen riding his bicycle around campus and elsewhere, and he is also interested in astronomy.



## THETA TAU

PROFESSIONAL ENGINEERING FRATERNITY

May 12, 1995

Theta Tau Professional Fraternity  
c/o Mr. Robert E. Pope, P.E.  
Executive Director  
655 Craig Road, Suite 128  
St. Louis Missouri 63141-7132

Dear Brothers:

It is with the greatest pleasure that I write you in support of the Northwestern University Colony's petition for Chapter status. I have been in close contact with the group, and can assure you that not only will they, as a collective, form an outstanding Chapter, but will individually be prodigious additions to the membership of Theta Tau.

I first met this group of impressive individuals at the 1994 National Convention. Their professionalism, enthusiasm and desire to succeed in Theta Tau left a great impression on me. Therefore, I continued to remain in close contact with the flourishing colony. In late January of this year I decided to make a trip to their colony to offer assistance and review their progress. I was welcomed with true feelings of brotherhood, and an overwhelming display of impressive work and growth. They had far surpassed my expectations, and constantly continue to do so. These are the characteristics that make an exceptional Chapter and have constructed the foundation of the colony's existence.

I would like to reemphasize my powerful impressions of their membership and of the Colony as a whole. These are the types of individuals that have been a major factor in our 90 years of success, and I urge us to continue adding such high caliber members to this pinnacle establishment. They are a collective group with determination in their minds, integrity in their souls, and brotherhood instilled in their hearts. They have grown to become Theta Tau, and have surely reached Chapter status. I wholeheartedly support their petition for Chapter status.

In H and T,

Nicholas Croce SSS! XXI  
Omega Beta Chapter '95



LABORATORY FOR INTELLIGENT MECHANICAL SYSTEMS

Department of Mechanical Engineering  
Robert R. McCormick School of Engineering and Applied Science  
Northwestern University



July 28, 1995

Dear Attendees of the 1995 Conference,

I am writing in support of the Northwestern Colony of Theta Tau regarding their petition for chapter status. I have observed and been involved with this group since its inception over two years ago and am nothing short of impressed. They have become one of the leading student organizations on this campus.

This group has certainly excelled in all areas, but I would like to especially recognize their successful "Tech Golf" program. This is a miniature golf tournament open to students and members of the community alike. Students design and build individual holes throughout the engineering building, which results in a fun and challenging course. While there are monetary prizes awarded to the best golfer and the designers of the best hole, most of the proceeds go to a local charity. This philanthropic event characterizes the group's enthusiasm for the engineering profession and their contributions to the campus and community.

The members themselves are certainly energetic, and have created strong traditions which they will pass down to new members. They have developed excellent rush and pledge programs. An appropriate mix of professional and social events are held each quarter, open to both members and pledges. While regulations on this campus make obtaining a house a difficult prospect in the near future, the members maintain what could be called an "open-door" policy, which effectively creates a "virtual" fraternity house.

Again, I highly recommend that the Northwestern colony be awarded chapter status. I believe they stand to make worthy contributions to the fraternity-at-large and the engineering profession.

In H and T,

Jon Lea  
Pi Beta '91 XX! YY!



## THETA TAU

PROFESSIONAL ENGINEERING FRATERNITY

May 24, 1995

To my Brothers in Theta Tau:

It is with great pleasure that I recommend that the Northwestern University Colony of Theta Tau petition for chapter status be approved. They have grown over the past two years and have shown themselves worthy of chapter status.

My first contact with the colony was at the 90th anniversary convention held in Minneapolis in 1994. In January of this year I had the pleasure of visiting the colony and joining them on a road trip to Xi chapter. At Xi chapter I had the opportunity to watch the colony members interact with brothers from Omicron, Nu Beta, and Xi. The hospitality and brotherhood I saw that weekend confirmed to me that the colony is ready for chapter status.

In addition to road trips the Northwestern colony has attended the last two national meetings, hosted a central regional conference, and attended several other regional conferences. The colony has been very active on the Northwestern Campus as well. For the second year in a row they have sponsored Techgolf, a engineering design competition to build miniature golf holes. The course is then opened for play to the public to raise money for charity. This event has been very successful and has helped the colony gain the recognition of the university and the engineering school.

I again recommend that this petition be approved, and I look forward to the establishment of a chapter at Northwestern University.

In H and T,

*Scott*

Scott B. Wurms, Omega Beta '94  
Colony Director



THETA TAU

PROFESSIONAL ENGINEERING FRATERNITY

Janice L. Wiitala  
3110 N. Sheridan Rd. #1504  
Chicago, IL 60657  
312/477-8729

**To all Chapters, Alumni Associations, Regional Directors and Executive Council Members:**

This letter is written in strong support of Theta Tau Nu's petition for Chapter Status. This Colony, located at Northwestern University, provides a balanced program of social, philanthropic, and professional activities. These activities have benefited not only the colony members, but also the campus and the community.

I have visited with many members and witnessed meetings and activities. I am convinced that the talents and enthusiasm of the colony members has fostered a collaborative spirit, forming a solid foundation necessary for a Chapter of Theta Tau Fraternity. As Central Regional Director, I am particularly impressed with the initiative they have taken to visit other Theta Tau Chapters. Through numerous road trips and active participation in national and regional meetings, they have developed friendships and have demonstrated their sincere interest in The National Fraternity.

I feel privileged to have witnessed Theta Tau Nu's growth. This colony has become a self sustaining organization with a strong sense of purpose, tradition, and brotherhood. For these reasons, I am pleased to recommend approval of Theta Tau Nu's petition for Chapter status.

IN H & T,

Janice Wiitala

Central Regional Director



July 27, 1995

Mr. Robert E. Pope, P.E.  
Executive Director  
Theta Tau Professional Engineering Fraternity  
655 Craig Road, Suite 128  
St. Louis, MO 63141-7132

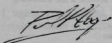
Dear Mr. Pope:

This letter is to express my strong support for the establishment of a full chapter of Theta Tau here at Northwestern University. In brief, the development of Theta Tau since their inception as a colony here has been remarkable. They have grown in size and stature, begun establishing terrific traditions, and maintained and improved the quality and enthusiasm of their membership body. I have no doubt that they will remain a thriving organization for many years, and certainly an asset to the National Theta Tau organization.

They have clearly demonstrated their value to the engineering community at Northwestern. Theta Tau's balance of social and professional emphases has worked well here. Their activities are well-organized and well-supported by the membership and students at large, in part because of the social cohesiveness of the group. They have made their presence felt through their activities, including "TECH Golf" and such, and have become familiar assets to the administration of the engineering school as well. In fact, I recently attended a meeting of student-group advisors at which it became clear that Theta Tau's colony was among the most successful of the engineering undergraduate organizations.

In brief, I believe very strongly that establishing a chapter here will be in the best interests of the students, the national fraternity, and Northwestern.

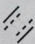
Yours sincerely,



Paul Cooper  
Assistant Professor  
Department of Electrical Engineering and Computer Science  
Faculty Advisor to Theta Tau at NU



NORTHWESTERN  
UNIVERSITY



ROBERT R. MCCORMICK SCHOOL OF  
ENGINEERING AND APPLIED SCIENCE

Office of Undergraduate Affairs

July 3, 1995

Mr. Robert Pope  
655 Craig Road, Suite 128  
St. Louis, MO 63141-7132

Dear Mr. Pope:

I have been asked by the officers of the students involved with Theta Tau at Northwestern University to write you in support of their petition for colony status. I have been aware of this student group since it began its activities over two years ago.

At the McCormick School of Engineering, we have been very impressed with the students and their activities as they have worked toward colony status. They have published a newsletter; reached out to the community within Northwestern to help for our Engineers week and to participate in Engineer's Week; reached out of the local community by holding a fundraiser, TECHGOLF, where the proceeds went to the Howard Community Center. Further, they have planned social activities ( Formal) as well as professionally oriented activities (planning plant tours, visiting the chapter at another school). I have worked with them on some of these activities and can personally attest to the strength of commitment of the current members. The level of activities is such as to build leadership and a sense of community and put forth an organization of which this school can be proud.

The Northwestern Colony of Theta Tau has my full support and we all look forward to their being installed as a National Chapter.

Sincerely yours,



Carolyn H. Krulee  
Assistant Dean

# Northwestern University Colony Adventures

