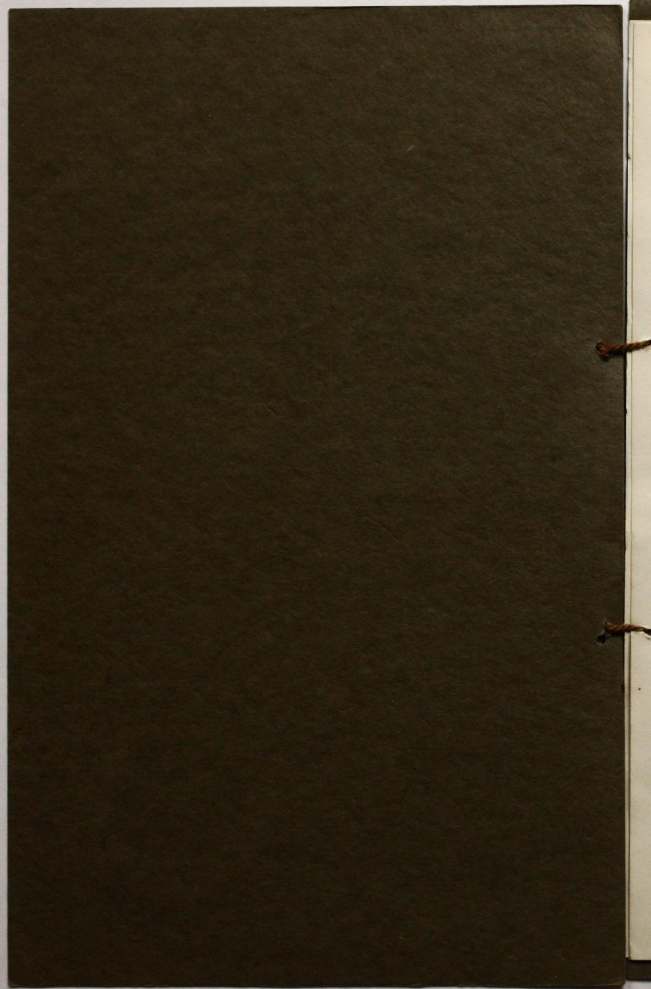


Xi

Chapter
Rebition





Madison, Wisconsin.

June 15, 1921.

TO THE THETA TAU FRATERNITY:

We, the undersigned, students of engineering, at the University of Wisconsin, do respectfully make application for membership in the THETA TAU FRATERNITY.

It has long been felt at the University of Wisconsin the need of such a strong fraternal organization among the students of engineering in order to affiliate men of character and of ethical standing both in school and in professional life after graduation.

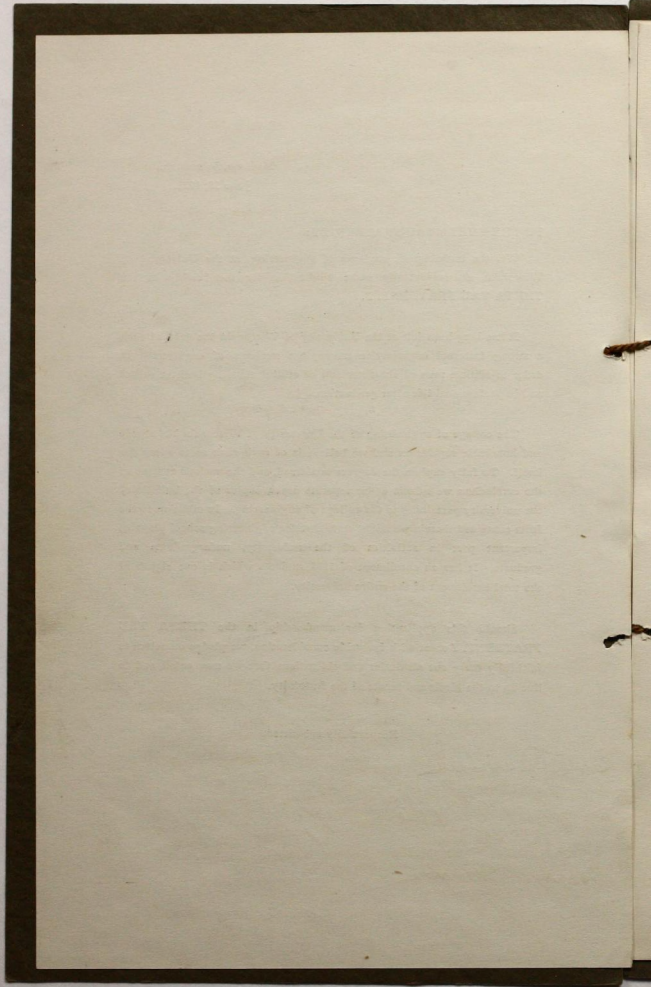
The college of engineering of the University of Wisconsin has a wide and honorable reputation and we believe is of such rank as to speak for itself. To fully explain the degrees conferred, and the various courses of the curriculum we submit under separate cover, copies of the bulletin of the university pertaining to the college of engineering. In addition to the facts contained therein we might state that the engineering school plays an important part in activities of the university, undergraduate and graduate. It has an enrollment of 1185 students which is one eighth of the total enrollment of the entire university.

Should this application for membership in the THETA TAU FRATERNITY meet with favorable consideration, we pledge ourselves to faithfully carry out all duties and obligations that we may entail and to live up to the ideals and tenets of the fraternity.

Respectfully submitted,

Ernest Schrader
Dyle C. Harney
Frederick W. Nolte
C. E. Skinner
Horace Phillips

J. B. Hamblen
W. C. Ritchie
H. J. Spelman
L. E. Buckingham
H. J. Spelman
E. J. Hutchinson
W. F. Hanks

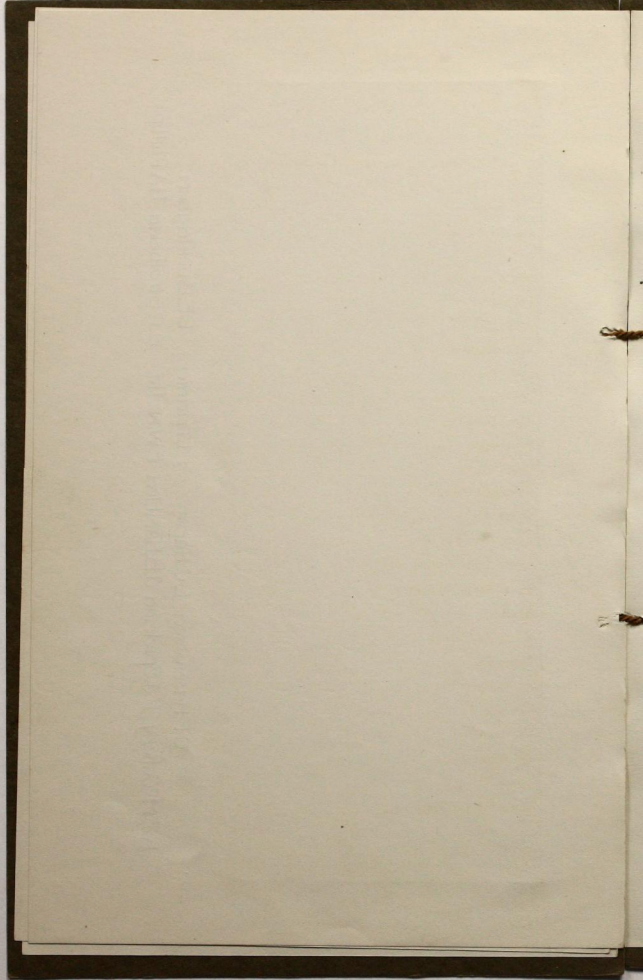


The following constitute the names and addresses of the group of students who are petitioning the fraternity:

- L. E. Buckingham, Ludington, Michigan.
302 Huntington Court, Madison, Wisconsin. X
Senior Chemical Engineer.
- Lyle C. Harvey, Oconto, Wisconsin.
620 North Lake Street, Madison, Wisconsin. X
Senior Chemical Engineer.
President of the Polygon Engineering Society.
Phi Delta Theta.
- Frederic W. Nolte, Wauwatosa, Wisconsin.
615 North Lake Street, Madison, Wisconsin.
Junior Electrical Engineer.
Acacia Fraternity.
- Harry A. Phillips, Evanston, Illinois.
625 North Henry Street, Madison, Wisconsin.
Junior Mechanical Engineer.
Sigma Nu.
- Jennings B. Hamblin, Franklin, Indiana. X
200 Langdon Street, Madison, Wisconsin.
Senior Chemical Engineer.
Manager of the "Wisconsin Engineer".
Chi Phi.
- Paul S. Brant, Madison, Wisconsin.
150 Iota Court, Madison, Wisconsin. out
Junior Civil Engineer.
Chi Psi.
- Edmund P. Strothman, Milwaukee, Wisconsin.
150 Iota Court, Madison, Wisconsin.
Sophomore Mechanical Engineer.
Chi Psi.
- William E. Ritchie, Hinsdale, Illinois.
524 North Henry Street, Madison, Wisconsin.
Sophomore Civil Engineer.
Delta Kappa Epsilon.
- Richard McCaffery X
150 Iota Court, Madison, Wisconsin.
Son of the Dean of the School of Mines.
Junior Mining Engineer.
Chi Psi.
- Harold J. Spielman, Park Ridge, Illinois.
524 North Henry Street, Madison, Wisconsin.
Junior Chemical Engineer.
Delta Kappa Epsilon.
- Clarence F. Rasmussen, Park Falls, Wisconsin. X
615 North Lake Street, Madison, Wisconsin.
Junior Electrical Engineer.
Business Manager of the 1921 Badger Publication
Acacia Fraternity.
- Marvin Trinnier, Denver, Colorado. X
620 North Lake Street, Madison, Wisconsin.
Junior Chemical Engineer.
Phi Delta Theta.
- Vilas Hanks
Langdon Street, Madison, Wisconsin.
Junior Civil Engineer.
Psi Upsilon.



C.F. Rasmussen	L.C. Harvey	M. Tridnier	L.E. Buckingham
R.S. McCallery	H.J. Spielman	J.B. Hamblen	E.P. Strothman
			H.A. Phillips



Fraternities in order of their establishment at the University

Name	Date of Establishment						
Phi Delta Theta	-	-	-	-	-	-	1857
Beta Theta Pi	-	-	-	-	-	-	1873
Phi Kappa Psi	-	-	-	-	-	-	1875
Chi Psi	-	-	-	-	-	-	1878
Sigma Chi	-	-	-	-	-	-	1884
Delta Upsilon	-	-	-	-	-	-	1885
Delta Tau Delta	-	-	-	-	-	-	1888
Phi Gamma Delta	-	-	-	-	-	-	1893
Theta Delta Chi	-	-	-	-	-	-	1895
Psi Upsilon	-	-	-	-	-	-	1896
Kappa Sigma	-	-	-	-	-	-	1898
Phi Kappa Sigma	-	-	-	-	-	-	1901
Sigma Nu	-	-	-	-	-	-	1902
Alpha Delta Phi	-	-	-	-	-	-	1902
Sigma Alpha Epsilon	-	-	-	-	-	-	1903
Delta Kappa Epsilon	-	-	-	-	-	-	1906
Acacia	-	-	-	-	-	-	1905
Alpha Tau Omega	-	-	-	-	-	-	1907
Sigma Phi	-	-	-	-	-	-	1908
Alpha Sigma Phi	-	-	-	-	-	-	1909
Zeta Psi	-	-	-	-	-	-	1910
Chi Phi	-	-	-	-	-	-	1916
Phi Sigma Kappa	-	-	-	-	-	-	1917
Theta Xi	-	-	-	-	-	-	1917
Lambda Chi Alpha	-	-	-	-	-	-	1917

