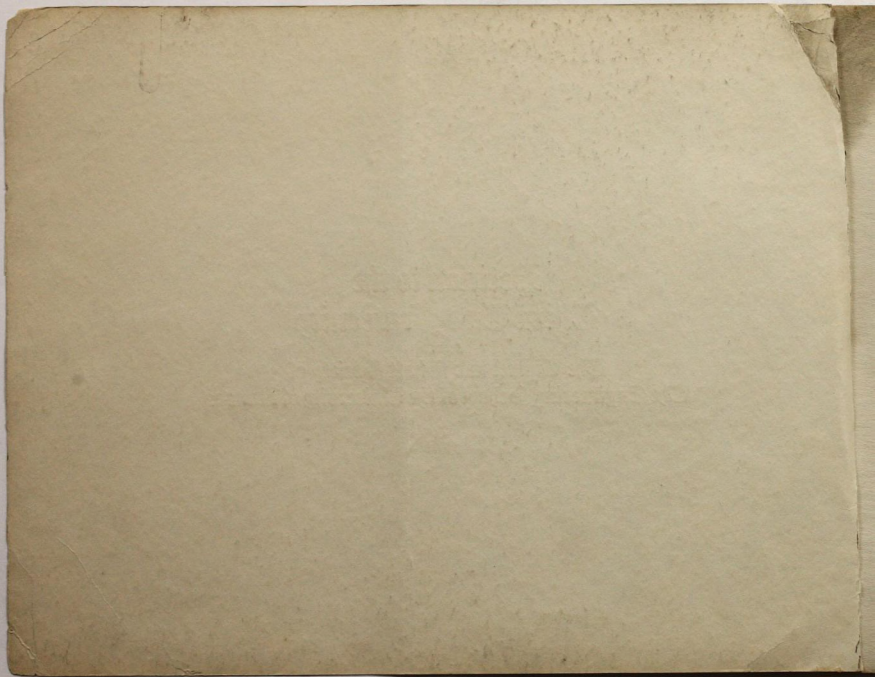


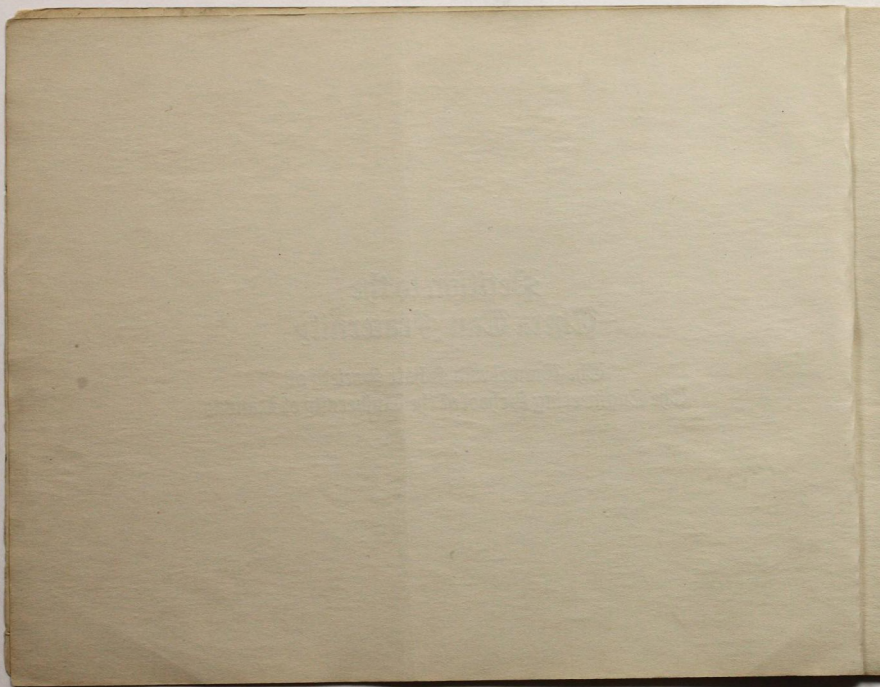
ZETA

Petition to the
Theta Tau Fraternity
from
The Tunnel and Shaft Society of
The Engineering School of the University of Kansas

Town City Alumni Association
of
Theta Tau



Petition to the
Theta Tau Fraternity
from
The Tunnel and Shaft Society of
The Engineering School of the University of Kansas



To the Executive Council and the

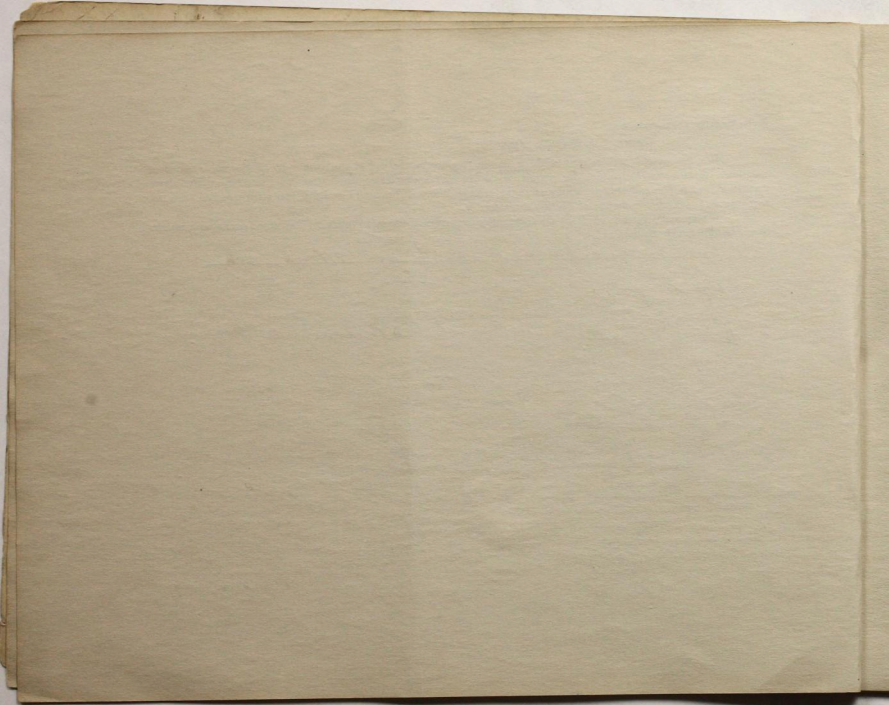
Chapters of the Theta Tau Fraternity:

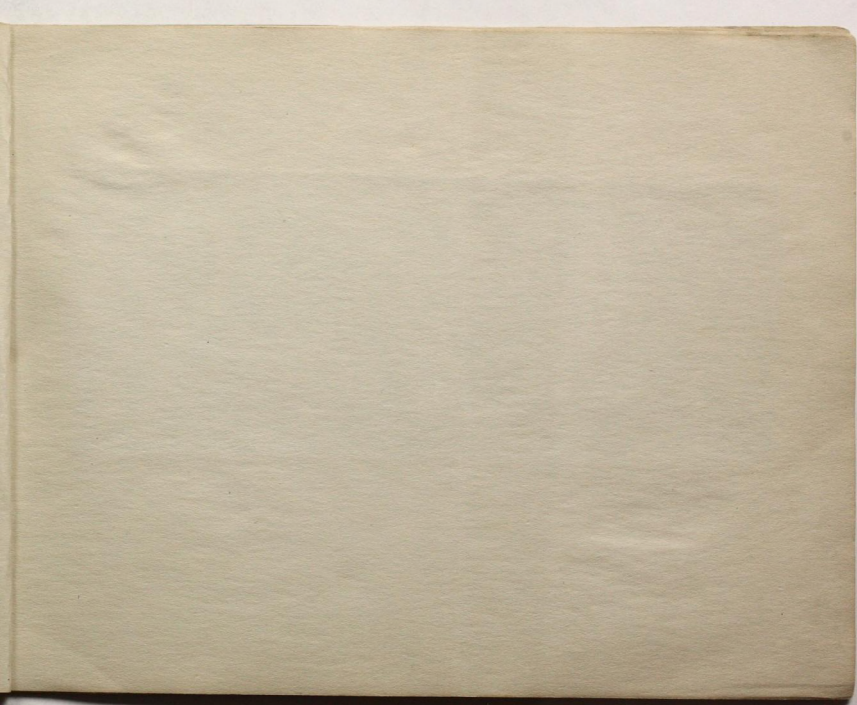
We, the undersigned, regular students in the Engineering School of the University of Kansas, situated at Lawrence, Kansas, hereby petition for permission to organize a chapter of the Theta Tau Fraternity at the above institution, and to that end we respectfully ask to be initiated into your Fraternity, and that you grant us when initiated, a charter as a subordinate chapter of Theta Tau Fraternity.

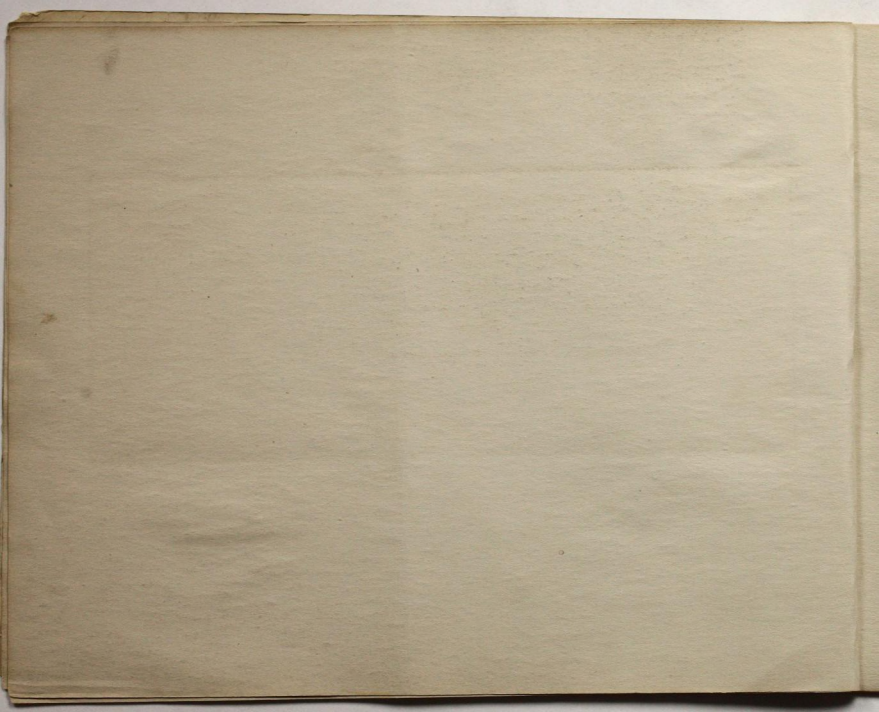
We severally agree to abide by the constitution and rules of the said Fraternity, if accepted as charter members of a subordinate chapter thereof.

Dated at Lawrence, Kansas this 1st day of March 1912

NAME	SCHOOL	CLASS
H. A. Rice	Ref.	
Carl L. Parker	Electrical	1912
A. H. Mangus	Mining	1912
Richard Ward	Civil	1913
Fred C. Johnston	Civil	1912
E. A. Van Houten	Mechanical	1913
H. L. Wilson	Civil	1912
Chas. H. Andrews	Mining	1912
Henry A. Campion	Electrical	1913
C. W. Coats	Mining	1913









Wilson
Van Houten

Manglesdorf

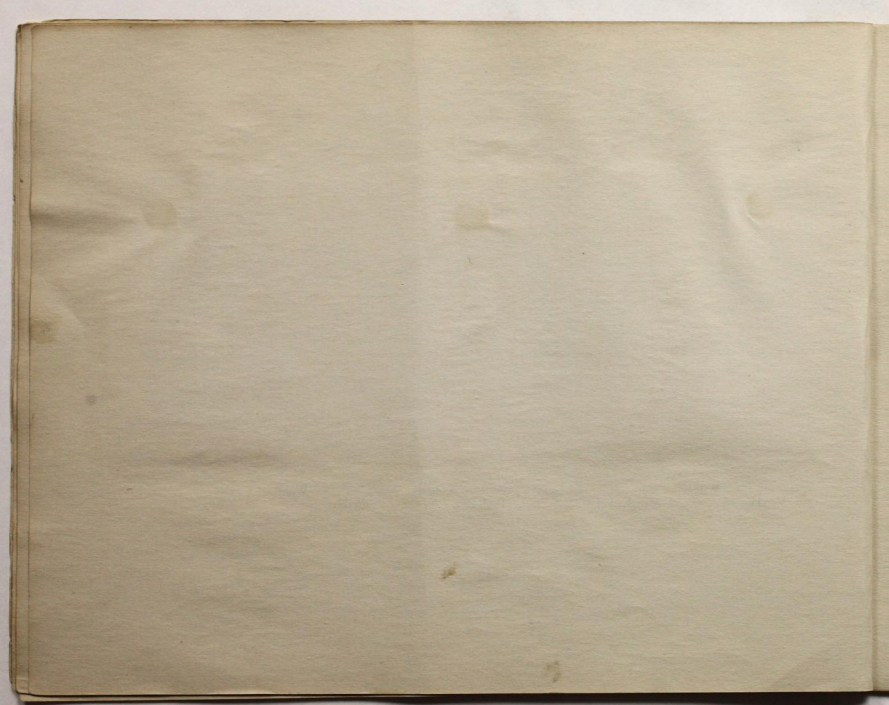
Johnston

Andrews
Prof. Rice

Parker

Ward

Coats



Membership Roll.

PROF. H. A. RICE,

Ohio State, C. E., 1897.
Instructor at Lehigh, '03 '05.
Associate Prof. Civil Engineering, University of Kansas, '06.
Pres. Athletic Association.
Toastmaster, Engineers Banquet, 1912.

OLIVER L. ANDREWS,

Powhattan, Kansas.
Mining Engineering, 1912.
Vice Pres. Student Branch A. I. M. E.
French Play, '09.
Fine Arts Opera, '08, '09, '11.

HERBERT L. WILSON,

Lyndon, Kansas.
Civil Engineering, 1912.
Pres. Civil Engineering Society.
Class Football '10 '11.
Senior Invitation Committee.

RICHARD WARD,

Belleville, Kansas.
Civil Engineering, 1913.
Sigma Chi.
Freshman Baseball, '09.
Varsity Baseball, '11.
Member of "K." Club.

H. H. CAMPION,

Leavenworth, Kansas.
Electrical Engineering, 1913.
Beta Theta Pi.
Sophomore Farce.
Chairman Junior Farce Committee.
Member Student Branch A. I. E. E.
Freshman Track.
Engineer's Track, '10 '11.
Varsity Track, '12.

A. H. MANGLESDORF,

Atchison, Kansas.
Mining Engineering, 1912.
Alpha Tau Omega.
Pres. Students Branch A. I. M. E.
Fine Arts Opera, '08.

CHAS. M. COATS, 1913.

Chanute, Kansas.
Mining Engineering, 1913.
Social Committee, Junior Class.
Program Committee, Engineer's Day.
Social Committee, Engineering School.
Treasurer Student's Branch A. I. M. E.

FRED. E. JOHNSTON,

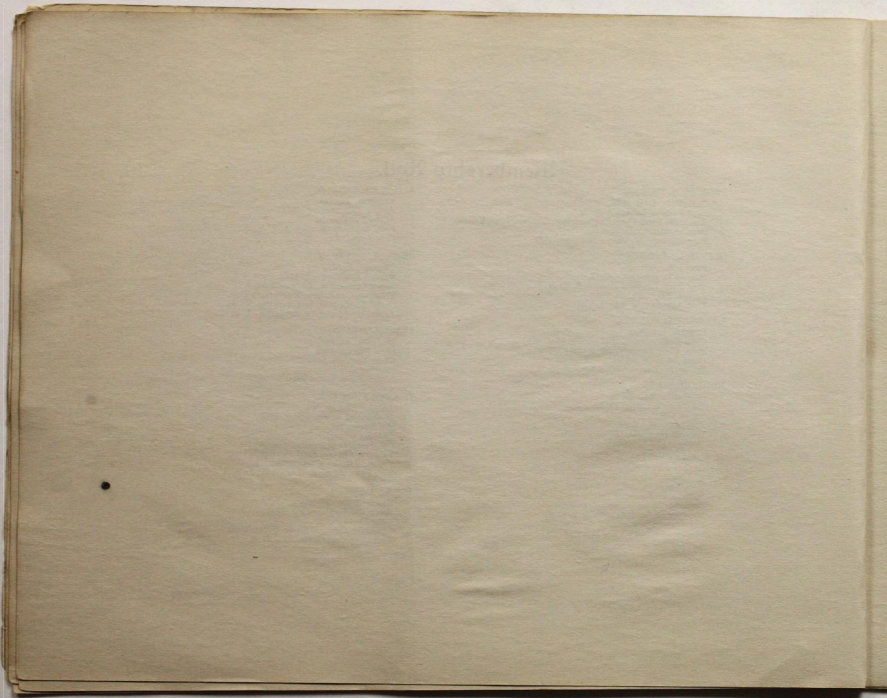
Madison, Kansas.
Civil Engineering, 1912.
Class Football, 1911.
Member C. E. Society.
Senior Social Committee.

E. A. VAN HOUTEN,

Topeka, Kansas.
Mechanical Engineering, 1913.
Phi Kappa Psi.
Student Council.
Chairman Junior Social Committee.
Treasurer of the Engineering School.
Friars, (Junior Class Society.)
Vice Pres. Student Branch A. S. M. E.

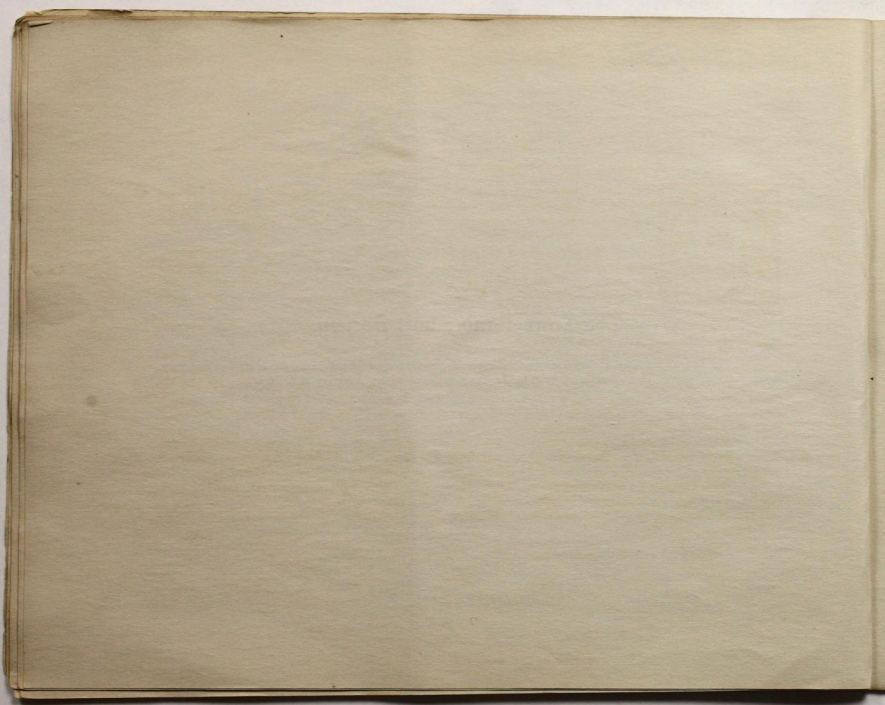
ROSS I. PARKER,

Kansas City, Missouri.
Electrical Engineering, 1912.
Beta Theta Pi.
Chairman Cap and Gown Committee.
Executive Committee A. I. E. E.



The Tunnel and Shaft Society.

The Tunnel and Shaft Society was organized expressly for the purpose of petitioning the Theta Tau Fraternity, to organize a chapter of Theta Tau Fraternity at the Engineering School of the University of Kansas.



THE SCHOOL OF ENGINEERING OF THE UNIVERSITY OF KANSAS.



ORK in the Engineering School of the University of Kansas, leads to degrees in the following branches of Engineering, Civil Engineering, Municipal and Sanitary Engineering, Electrical Engineering, Mechanical Engineering, Mining Engineering, Chemical Engineering, and a five year course in Architectural Engineering is now being added to the curriculum.

The Engineering School has the following buildings at its disposal, Marvin Hall, general engineering work, Mechanical Laboratories and Power Plant, Fowler Shops, Haworth Hall, the Geology and Mining Building, Blake Hall, the Physics Building, and the Chemistry Building. A more complete description of the equipment of the Engineering School will be found in the

University Catalog which accompanies the petition.

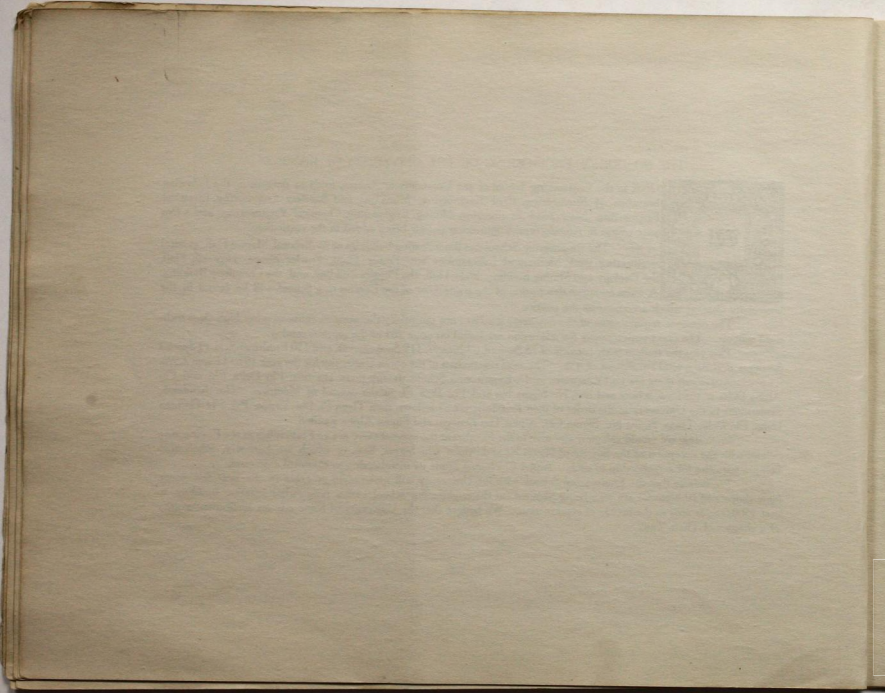
The entrance requirements of the engineering school are essentially the same as those of other high class technical schools. The exact requirements for admission are found on page 205 of the general catalog.

This year the student body consists of 78 Seniors, 69 Juniors, 119 Sophomores, and 150 Freshmen and 19 Special Students making a total enrollment of 435. The total registration of the entire University for the year 1910-11 was 2,398.

At present there are no Fraternities in the Engineering School, though there are two, Phi Delta Phi and Phi Alpha Delta in the Law School and two, Nu Sigma Nu and Phi Beta Pi, in the School of Medicine. The Academic Fraternities in the University in the order of their founding, are as follows, Beta Theta Pi, Phi Kappa Psi, Phi Gamma Delta, Phi Delta Theta, Sigma Nu, Sigma Chi, Alpha Tau Omega, and Sigma Alpha Epsilon.

In closing, we would call your attention to the fact that at the present there are no Fraternities in the Engineering School with the exception of the Society of Sigma Xi and Alpha Chi Sigma, both of which are honorary, scholarship being a requisite for membership in each. Alpha Chi Sigma limits its membership to chemical engineers.

We believe that the Engineering School, with the University will make rapid progress in the next few years. New shops and laboratories are now being planned for the engineering school and a new Administration building, to cost \$500,000, is now in the course of construction. We believe that the University of Kansas is an institution worthy of a chapter of Theta Tau.



February 19, 1912.

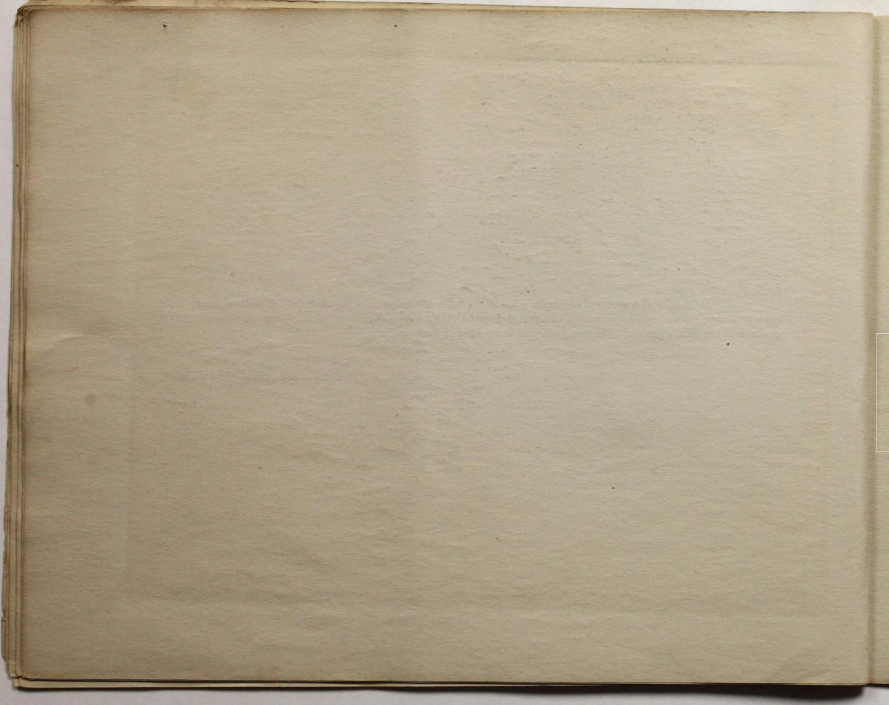
To the Theta Tau Fraternity:

I understand that a group of engineering students of this institution, now forming the Tunnel and Shaft Club, have petitioned for the establishment of a Chapter of your fraternity here. Knowing these young men as competent students of excellent traits and character, I am glad to approve of their petition.

Respectfully,

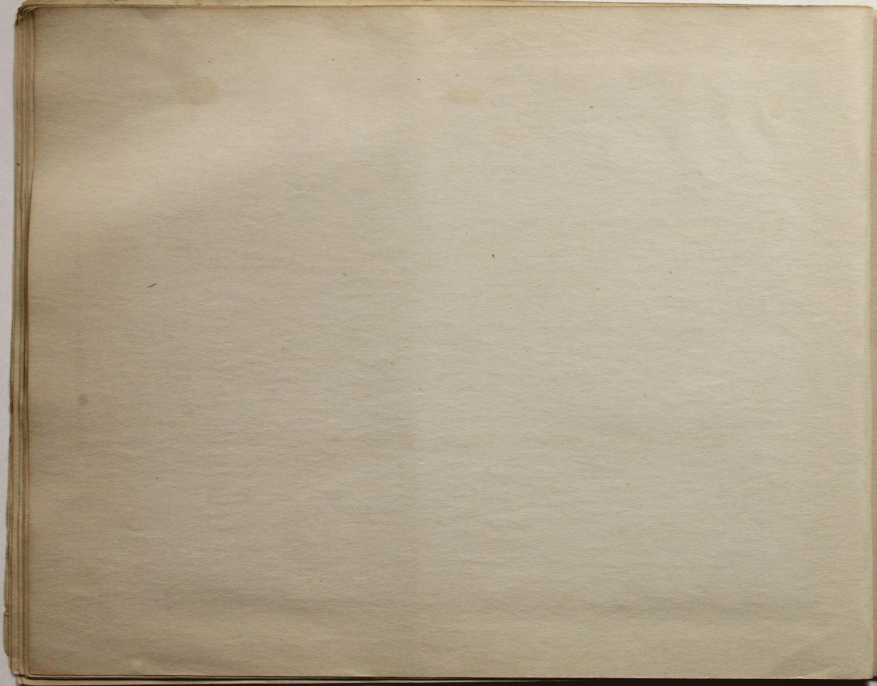
F. O. MARVIN,

Dean of the School of Engineering.





MARVIN HALL--General Engineering



To the Executive Council and Chapters of Theta Tau Fraternity.

Gentlemen: The members of the Tunnel and Shaft Society are all students of good standing in the Engineering School of the University of Kansas. They are good students and worthy of confidence and respect.

Our Mining School, although young, already has a number of graduates who are making good in the profession. Some of them are in Africa heading parties sent out from the United States and Europe for mineral exploitation and are giving good satisfaction. Some are in South America and are doing equally well. Others are scattered throughout the United States.

I can recommend the members of the Tunnel and Shaft Society for any confidence that may be placed in them.

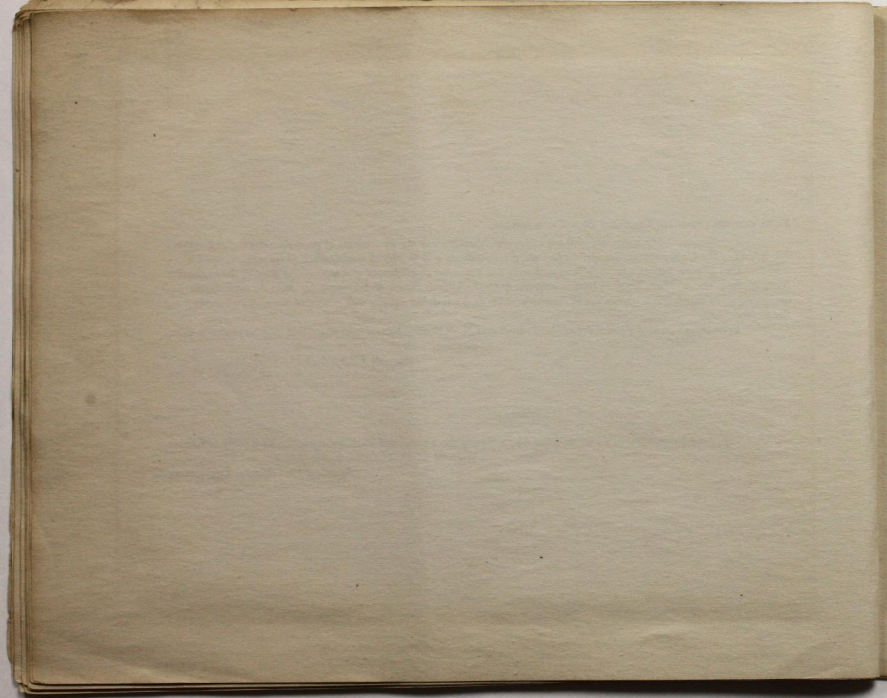
Yours very truly,

[Signed] ERASMUS HAWORTH,
Dean of School of Mining.

I approve the granting of a charter from Theta Tau to the Tunnel and Shaft Society of the University of Kansas.

[Signed] C. M. YOUNG, E. M.

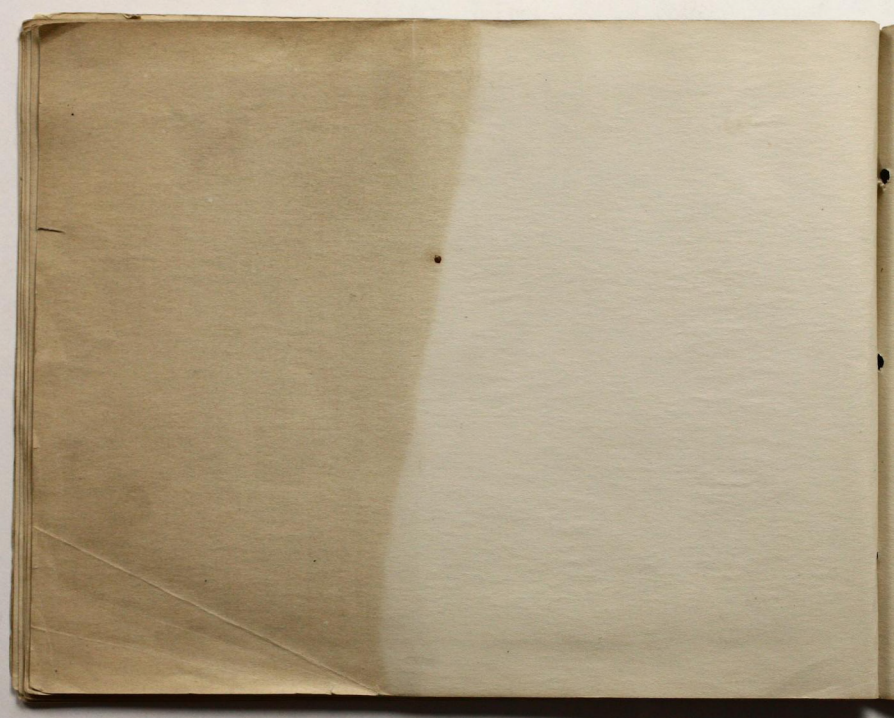
Associate Prof. Mining Engineering.





HAWORTH HALL—Geology and Mining

Henry
1913



To Whom It May Concern:

The signers of this petition for the establishment of a chapter of the Theta Tau Fraternity, as far as the writer is personally acquainted with them, conscientious men of high ideals and good personalities and should be successful in their chosen cause. They are active in the various student affairs and they are possessed of the power to

Theta Tau Fraternity:

In regard to the men who have petitioned for a chapter of your Fraternity, I say that I know all of them personally and that they are all good students.

