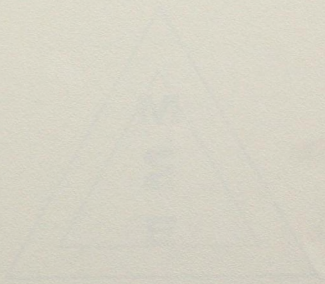


PETITION

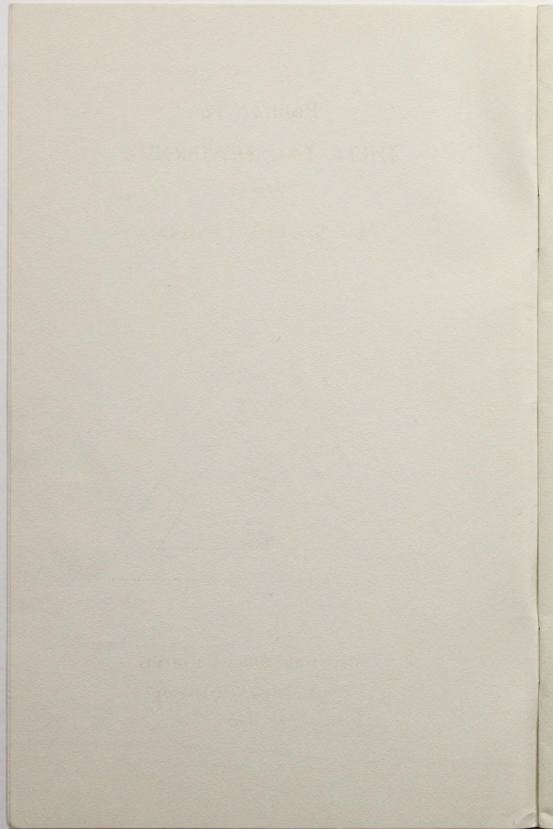




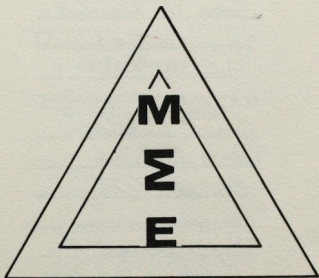
Primer to
MATA TAI (MATHS)
for
MATA TAI (MATHS)



Copyright 1964 by
MATA TAI (MATHS)
Singapore



Petition To
THETA TAU FRATERNITY
From
MU SIGMA EPSILON



Mississippi State University
State College, Mississippi
May, 1964

PETITION

We, the undersigned, do hereby petition Theta Tau Fraternity for a charter as an active chapter of Theta Tau Fraternity at Mississippi State University.

We hereby pledge that the undersigned are all presently enrolled in the College of Engineering at Mississippi State University and have no affiliation with any organization competitive with Theta Tau Fraternity.

Claud J. Soby
George A. Newbill
James E. Lefebvre
W. M. Putnam
Lang L. Alexander
John M. Cockburn
James E. Cicchi
James L. Haynes
Dennis Horne
Ray H. Jones, Jr.
John W. Jordan
George B. Lightsey
Emile A. Nassar
Melvin C. Payne, Jr.
William R. Trask, Jr.
Earl M. Ware
Robert F. Yachery

CHARTER MEMBERS

Newbill, George Albert: ChE, 1965
Meridian, Mississippi
AIChE (President)

Upchurch, James Kimble, Jr.: ChE, 1965
Jackson, Mississippi
AIChE (Vice President)

Putnam, Victor Montelle, Jr.: ChE, 1965
Jackson, Mississippi
AIChE (Secretary)

Alexander, Larry Lee: EE, 1965
Hattiesburg, Mississippi
IEEE (Treasurer)

Cockerham, John Manson: ME, 1965
Greenville, Mississippi
Delta Chi

Cuicchi, James Edward: EE, 1965
Shaw, Mississippi
HKN, IEEE, MSPE

Haynes, James Howard: EE, 1965
Gulfport, Mississippi
Sigma Chi, Eta Kappa Nu, IEEE

Horne, Dennis: EE, 1966
Marinetta, Georgia
IEEE

Jones, Ray Hamilton, Jr.: ChE, 1965
Jackson, Mississippi
Acacia, AIChE

Jordan, John William: ChE, 1966
Mobile, Alabama
Pi Kappa Alpha, AIChE

Lightsey, George Rodney: ChE, 1965
Sandersville, Mississippi
AIChE

Nassar, Emile Albert: ChE, 1965
Jackson, Mississippi
AIChE, Arnold Air Society

Payne, Melvin C. Jr.: ChE, 1966
Newton, Mississippi
Pi Kappa Alpha

Trask, William Raymond, Jr.: ChE, 1965
Centreville, Mississippi
AIChE

Ware, Earl Moseley: EE, 1965
Hattiesburg, Mississippi
IEEE, Eta Kappa Nu, Tau Beta Pi, MSPE

Yarborough, Patrich Foil, EE, 1965
Columbus, Mississippi
Sigma Chi, IEEE

OTHER ACTIVE MEMBERS

Buchanan, Neilson Sandifer: IE, 1966
Indianola, Mississippi
Sigma Chi

Fink, Gary: ChE, 1966
Mississippi City, Mississippi
AIChE

Huffman, Don Ellis: AE, 1966
Houston, Mississippi
ASAE

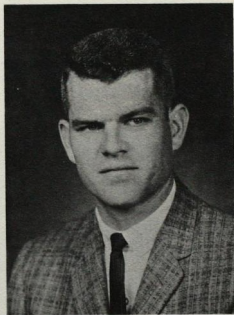
Jackson, James Carson: ME, 1967
Purvis, Mississippi

Schultz, Joseph John, Jr.: ChE, 1966
Canton, Mississippi
Sigma Chi, AIChE

Smith, Newton James, Jr.: EE; 1965
Scooba, Mississippi
IEEE, MSPE

Taylor, Harold Walter, Jr.: EE, 1965
Meridian, Mississippi
IEEE

Colbert, William L.: ME, 1967
Jackson, Mississippi
Pi Kappa Alpha



Claud J. Irby, sponsor of Mu Sigma Epsilon, is an assistant professor of the Electrical Engineering Department. He received his B. S. degree from Louisiana Polytechnic Institute in 1958 and his M. S. degree in 1961. He is a member of the following organizations: Tau Beta Pi, H.K.N., Phi Kappa Phi, IEEE, A.S.E.E., Registered Professional Engineer in the state of Louisiana, and Civitan Club.

PLEDGES

Bowker, Edward: ME, 1966
Starkville, Mississippi
Newman Club, Phi Eta Sigma

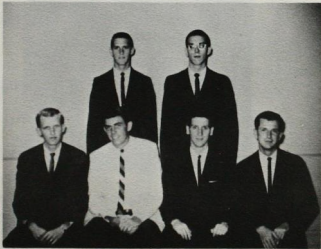
Crain, Billy: AE, 1966
Jackson, Mississippi

McCollister, William T.: EE, 1966
Pass Christian, Mississippi
Newman Club

Randall, Charlie Alvin, Jr.: AE, 1966
Vicksburg, Mississippi
Mississippi Society of Professional Engineers

Seay, Richard L.: EE, 1966
Greenwood, Mississippi

Shultz, Richard C.: ME, 1967
Meridian, Mississippi
Pi Kappa Alpha



Pledges

Front Row: Bowker, McCollister, Seay, Shultz
Back Row: Crain, Randall



CHARTER MEMBERS

Front Row: Haynes, Cockerham, Alexander, Newbill,
Upchurch, Putnam, Nassar
Back Row: Cuicchi, Payne, Lightsey, Trask, Jordan,
Yarborough, Jones, Ware



OTHER ACTIVE MEMBERS

Front Row: Schultz, Buchanan, Taylor, Jackson
Back Row: Colbert, Smith, Fink, Huffman

A Brief History of Mississippi State University

In 1878 a land grant school was established, one and one-half miles east of Starkville as "The Agriculture and Mechanical College of the State of Mississippi." Today that institution which began with approximately 300 students is known as Mississippi State University with 6000 students.

The first President was Stephen D. Lee, a noted Confederate General from Charleston, South Carolina, who was complimented by Gen. Robert E. Lee, for his services and gallantry. General Stephen Lee was once a state senator and a member of the last constitutional convention which framed the Constitution of Mississippi. He contributed greatly to the building of the college, and in carrying its services to the people of the state.

Under John C. Hardy, who became president in 1900, the curriculums in agriculture and engineering became the foundations for the School of Engineering, organized in 1902, and the School of Agriculture, organized in 1903. In 1900, a Textile School had been organized, but this school lagged in enrollment and was finally abolished in 1914.

Training in education began with a department of industrial education, set up in 1903. From this start came the School of Industrial Pedagogy, which was organized in 1909. After a number of vicissitudes, this school was eventually to become known as the School of Education in January of 1935. In 1911, the School of General Science was organized. The School of Business and Industry, formally organized in 1915, grew out of a business curriculum that was already in existence.

In March, 1914, the Smith-Lever Act made available federal funds for "instruction in practical agriculture and home economics to persons not attendant or resident." As a result, all federal and state extension work in agriculture for Mississippi became centralized on the campus. In February, 1917, the Smith-Hughes Act provided federal funds for the training of teachers in vocational education, thus giving a boost to educational instruction at the institution.

During World War I the school was the center of military activity. Many of the students went on active duty, and the

campus facilities were used by the U. S. government for special technical training. In the post-war era, an ambitious building program was undertaken with special legislative appropriations. Also in the twenties the institution was granted membership in the Southern Association of Colleges and Secondary Schools.

On February 3, 1932 the legislature approved a petition from the student body to change the name of the institution to Mississippi State College. Under its new name, the school further expanded its functions. In 1936 the graduate program was placed under a newly organized graduate school.

The decade from 1940 to 1950 brought expansion in all phases of campus activity. In the first half of the period, most of the students entered the armed forces and the institution was again used for specialized training.

The returning war veterans, encouraged by the G. I. Bill of Rights, soon pushed campus enrollment past the 3,500 mark. New buildings dedicated in 1950 included the Library, Gymnasium, Patterson Engineering Laboratories, Agricultural Engineering Building, Garner Dormitory, Veterinary Science Building, and Dairy buildings. The 8,000-acre Northeast Mississippi Experimental Forest was acquired during 1953. The School of Forestry was established in 1954 with a four-year curriculum in forest production.

In 1956 the School of Science was broadened to include both Natural Sciences and Liberal Arts divisions. The name of the school was changed to Arts and Sciences, and the Bachelor of Arts Degree was authorized for those who complete the various Liberal Arts curriculums. The Chemical Engineering Building was completed in 1956. Smith and Critz dormitories, accommodating almost 500 students, were opened in 1957. Six new dormitories, opened in early 1959, providing housing for an additional 1,400 students. Hilburn Hall, a new class room building, was opened in the summer of 1960. Walker Engineering Building was opened in the spring of 1963.

In recognition of the continuing expansion of the institution, the Legislature in 1958 renamed it Mississippi State University. Under its new name it looks to even broader horizons of research and training as it enters its ninth decade.

A Brief History of the Engineering School

Mississippi State University was first organized as "The Agriculture and Mechanical College of the State of Mississippi," as a land grant institution under the provisions of the Morrill Act on February 28, 1878. Engineering was first offered as a separate curriculum in 1892. The School of Engineering was organized in 1902. The first engineering curriculum offered degrees in Mechanical, Electrical, Civil, and Geology and Mining engineering. In 1903, the Department of Rural Engineering was established only to be incorporated into the School of Agriculture the following year. 1933 saw the organization of the Aeronautical Engineering Department which remained relatively small until World War II. During this period the Aeronautical Engineering Department was commissioned the task of training many Air Force personnel. In 1961, the Aeronautical Engineering Department was changed to the Aerospace Engineering Department. The Department of Ceramic Engineering came into being in 1937. This school has grown considerably with the advent of the space age, and the increased need for high temperature resistant non-metallic materials. The Department of Petroleum Engineering was organized. This field of study was a direct consequence of the discovery and development of the vast petroleum resources of the state of Mississippi. In 1948 the Department of Agriculture Engineering was recreated. In 1954 the Department of Chemical Engineering, which was previously a branch of the Chemistry Department, was organized separately. The curriculum of this department is designed to give the student a thorough grounding in the basic sciences. In 1954 the Industrial Engineering Department was organized. This department is concerned with the design improvement and installation integrated systems of materials and equipment. In 1955 the Nuclear Engineering Department was organized to offer an opportunity for study in the field of nuclear science and engineering. In 1963 Metallurgical Engineering was initiated because of the great demand of extraction of metals from their ores and the shaping of these metals for the use of man.

Since laboratory instruction is recognized as a important element of engineering education throughout all courses of study, much time is included in work in the laboratory field so that practical application may go hand in hand with theory. To facilitate laboratory work the Patterson Engineering Laboratory and the Agriculture Building were dedicated in 1950. The Chemical Engineering Building was completed in 1956 to house the expanding

Department of Chemical Engineering. Because of the growing demand for laboratory space, the Hand Chemical Laboratories was recently completed. Up until 1950 the Engineering Building (1902) and the Chemistry Building (1927) had the only facilities available for laboratory use.

Because of the wide variation of engineering degrees which may be obtained at Mississippi State University, in the Fall of 1963 the School of Engineering was renamed the College of Engineering. It is accredited in Aerospace Engineering, Agricultural Engineering, Civil Engineering, Electrical Engineering, and Mechanical Engineering.

Mu Sigma Epsilon

Theta Tau selected Mississippi State University as a possible site for a chapter of the national engineering fraternity. The Theta Tau Chapter at the University of Alabama presented the idea to twenty-five students of the engineering school at State in the organizational meeting on April 24, 1963. At this meeting, Professor Rey, Grand Regent of Theta Tau and sponsor of the chapter at the University of Alabama, introduced several of the students of the Alabama Chapter. The Mississippi State students decided to organize a local engineering fraternity with the purpose of the petitioning Theta Tau for a chapter. Officers of the local engineering fraternity were elected and the date for the next meeting was decided upon.

At the second meeting, Mu Sigma Epsilon, derived from Mississippi State Engineers, was chosen as the name for the local fraternity. A set of by-laws were drawn up, presented, and adopted by the fraternity. As soon as the local fraternity was completely organized, the semester was over.

During the summer, the men at summer school began to form plans for the fall. Conferences with engineering department heads, recognition by the University, and acquiring a sponsor, were objectives that were set up for the fall semester. The first meeting of the school year brought the nomination of a sponsor from the group. Within two weeks we had acquired Profess-

or Irby of the Electrical Engineering Department as our sponsor. Shortly afterwards, Mu Sigma Epsilon was recognized by the University as a local professional engineering fraternity.

The goal of Mu Sigma Epsilon was to become as active as possible in the engineering activities of the University. Engineering Day was close at hand, and the local fraternity placed its services at the disposal of the School of Engineering. It was decided to organize a program to be presented to several high schools across the state. The program was designed to give the high school student a look at engineering from those who had chosen the profession as a course of study.

A place where the fraternity could meet and study was greatly needed. The Office of Student Affairs gave Mu Sigma Epsilon permission to rent or build a fraternity house on or off campus. Mu Sigma Epsilon is now making the necessary preparations to form a corporation in order to obtain the financial backing to build a fraternity house. A goal of two years has been set by our members as a possible completion date. Until such facilities are acquired, a room in the new Student Union Building, upon its completion in September, is being sought for a chapter room. A room in the Engineering Building is now being used for organizational meetings.

After a year in existence, the local fraternity decided to pledge members of the sophomore and junior class. A rush party in the form of a smoker was held. Ten men were invited. Refreshments were served, and the men were introduced to the Theta Tau and Mu Sigma Epsilon. Eight new members were pledged. Another rush party was held in April with more boys being pledged. At present, Mu Sigma Epsilon contains charter members, initiated members, and pledges.

Mr. Pope, the national executive secretary of Theta Tau, visited Mu Sigma Epsilon in March. Mr. Pope was pleased with our fraternity, and encouraged us to complete our petition to the national chapter by the end of the school year. Professor Rey again visited the campus, this time attending a banquet in April. At the banquet he urged us to complete our petition and submit it to the national office by May.

Mu Sigma Epsilon is a growing professional group dedicated to being a influential engineering organization on the campus.

Although a young organization on the Mississippi State University campus, Mu Sigma Epsilon will continue to make a valuable contribution to the engineering school, through enlarged activities and the desire to serve those in the engineering profession.

MISSISSIPPI STATE UNIVERSITY

STATE COLLEGE, MISSISSIPPI

Office of the President

March 27, 1964

Executive Council
Theta Tau Fraternity

Gentlemen:

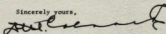
It is my pleasure to endorse the petition of our local professional engineering fraternity for a chapter of Theta Tau.

My office has been aware of Mu Sigma Epsilon and the efforts of the young men who hold membership in it to prepare themselves for national affiliation. The purposes and ideals of the organization as presented in "Theta Tau On Your Campus" have been reviewed.

The members of Mu Sigma Epsilon represent a fine cross section of our College of Engineering. They are well dispersed as to geographical origin within Mississippi and surrounding states. There is variety in their campus affiliations and activities. There is reasonable distribution among academic levels of classification.

It is my understanding that the petitioning group are highly motivated in their desire for the chapter of Theta Tau, that they have worked closely with members of the engineering faculty, and that they enjoy the confidence of those faculty members. I am happy, therefore, to add not only my endorsement of their efforts but also my commendation.

Sincerely yours,



D. W. Colvard
President

MISSISSIPPI STATE UNIVERSITY

STATE COLLEGE, MISSISSIPPI

Academic Vice President

March 25, 1964

Executive Council
Theta Tau Fraternity

Gentlemen:

I have learned that our local professional engineering fraternity, Mu Sigma Epsilon, is now ready to petition you for membership in the national organization. I am happy to add my favorable sentiments to those you have already received in behalf of this fine group.

We have a very fine College of Engineering on our campus and one which we feel stands quite well nationally. Its graduates have been employed in all fifty states and in foreign countries and have established excellent records for themselves. Our present student body in engineering, which is the largest college on the campus, is upwards of 1300 undergraduates.

From my investigation of the record of Mu Sigma Epsilon on our campus, I feel that it is eminently well qualified for admission to the national fraternity. I heartily recommend that you accept it into the membership of Theta Tau.

Sincerely yours,



John K. Bettersworth
Academic Vice President

THETA TAU
NATIONAL PROFESSIONAL ENGINEERING FRATERNITY

WILLIAM K. REY
P. O. BOX 884
UNIVERSITY, ALABAMA

April 21, 1964

Members of Theta Tau

Dear Brothers:

Since my first meeting with the members of Mu Sigma Epsilon at Mississippi State University, I have been very favorably impressed with their sincerity and capability. During the past year, they have worked diligently to achieve their goal of establishing a Theta Tau Chapter on their campus. The members of Mu Sigma Epsilon are highly regarded by the administrative officers of the University and the College of Engineering. On the basis of my contacts with the members of this group, I recommend your favorable consideration of their petition.

Sincerely,

William K. Rey
William K. Rey
Grand Agent

MISSISSIPPI STATE UNIVERSITY
STATE COLLEGE, MISSISSIPPI
39762

COLLEGE OF ENGINEERING
DIVISION OF INSTRUCTION
ENGINEERING AND INDUSTRIAL RESEARCH STATIONS
ENGINEERING EXTENSION SERVICE

March 16, 1964

Executive Council
Theta Tau Fraternity

Gentlemen:

For approximately a year a local professional engineering fraternity, Mu Sigma Epsilon, has been active on the campus of Mississippi State University. In this time the number of engineering students in this group has shown a steady growth with representation among the several departments of the College of Engineering.

The group has worked closely with the Office of the Dean of Engineering during their organization period. They have developed several worthwhile projects which have the approval of the engineering administration. We understand that they have maintained close relationship with the Theta Tau chapter at the University of Alabama.

We have watched the growth of this group and we feel that they are now in a position to petition Theta Tau for a charter. Their petition has our wholehearted support. We would welcome a chapter of Theta Tau on the campus at Mississippi State University.

Sincerely yours,

Harry C. Simcell
Harry C. Simcell, F. E.
Dean

MISSISSIPPI STATE UNIVERSITY
STATE COLLEGE, MISSISSIPPI
39762

COLLEGE OF ENGINEERING
DIVISION OF INSTRUCTION
ENGINEERING AND INDUSTRIAL RESEARCH STATION
ENGINEERING EXTENSION SERVICE

March 25, 1964

The Executive Council
Theta Tau Fraternity
St. Louis, Missouri

Gentlemen:

I wish to recommend the Mississippi State University Mu Sigma Epsilon colony which is petitioning for charter as a chapter of Theta Tau Fraternity.

These young men have worked closely with the Dean's Office and we have come to know them quite well. They have impressed us with their friendliness, industriousness and sincerity. In their activities as a local group their efforts have always been guided by what they consider to be the best interests of the University and the College of Engineering. Their plans for the future are well thought out and give evidence of mature judgment.

We believe you would be fortunate to have this group as a chapter of Theta Tau Fraternity.

Sincerely yours,



H. P. Neal, P. E.
Associate Dean

MISSISSIPPI STATE UNIVERSITY
STATE COLLEGE, MISSISSIPPI

DEPARTMENT OF ELECTRICAL ENGINEERING

March 26, 1964

Executive Council
Theta Tau Fraternity

Dear Sirs:

It is with a great deal of pleasure that I can recommend the members of Mu Sigma Epsilon in their request for affiliation with Theta Tau.

As faculty advisor to Mu Sigma Epsilon, I have been very impressed by the leadership exhibited by the officers and by the willingness with which each member has contributed of his time and energy. Each member has been very enthusiastic and has given serious minded attention to all of the details of establishing a firm basis upon which to build a solid organization. Further, a spirit of teamwork has prevailed in the organizing of Mu Sigma Epsilon which will continue into professional life and will be of great value to each member. This, I think, will be to the benefit of such an organization.

I believe there is a real need on this campus for the continuation of an organization such as Mu Sigma Epsilon. Affiliation with Theta Tau will strengthen the present organization and will give to it a continuity of guidance and purpose.

I urge your kind consideration of Mu Sigma Epsilon's request for affiliation with Theta Tau and would hope that your decision will be favorable.

Very truly yours,



Claud J. Irby
Assistant Professor
Department of
Electrical Engineering

MISSISSIPPI STATE UNIVERSITY
STATE COLLEGE, MISSISSIPPI

DIVISION OF STUDENT AFFAIRS

March 14, 1964

Executive Council
Theta Tau Fraternity

Gentlemen:

I would like to take this opportunity to recommend Mu Sigma Epsilon at Mississippi State University, State College, Mississippi, for affiliation with the National Professional Fraternity, Theta Tau. This organization was approved on November 1, 1963, by the Committee on Organizations and Fraternities at the University, and the leaders and members have demonstrated excellent scholarship, leadership, cooperation, personal initiative as well as group initiative and thus have made marked progress in many areas during the 1963-64 school session.

I personally feel that Mu Sigma Epsilon will grow and develop into one of the most outstanding organizations at Mississippi State University. Therefore, it is with pleasure and a feeling of complete confidence that I make the above recommendation for this group for affiliation with Theta Tau.

Sincerely yours,

Harold S. Hall
Harold S. Hall, Coordinator
Student Activities

North Alabama Alumni Club
Theta Tau Fraternity
2213-G Pisata Dr., SW
Huntsville, Alabama
April 15, 1964

Dear Brothers:

The North Alabama Alumni Club of Theta Tau takes great pleasure in recommending Mu Sigma Epsilon Professional Engineering Fraternity at Mississippi State University for installation as a chapter of Theta Tau.

We have been especially interested in the progress of Mu Sigma Epsilon, not only because of its proximity, but also because several of our members, as active in Mu Chapter, were participants at a meeting that led to the creation of this organization.

As a result of our association with its founders, the enthusiasm and zeal demonstrated by its officers, and the accomplishments of its members; we wholeheartedly urge you to approve their petition.

We feel confident that the installation of Mu Sigma Epsilon as a chapter of Theta Tau will be a great step forward for our Fraternity.

In H and T,

Leon M. Vick, Jr.
Leon M. Vick, Jr.
Acting Chairman

James T. Dixon, III
James T. Dixon, III
Acting Secretary

MU CHAPTER
OF
Theta Tau Fraternity

April 20, 1964

P. O. BOX 3154
UNIVERSITY, ALABAMA

Dear Brothers of Theta Tau:

It is a pleasure, on behalf of the members of Mu Chapter, to write in support of the petition of Mu Sigma Epsilon. We of the Mu Chapter have a very keen interest in this group since we, along with Grand Regent Rey, helped to organize this group.

Since their organization, the members of Mu Sigma Epsilon have worked with an intense and increasing desire to become another chapter of our Fraternity. Although a relatively new group, we of Mu Chapter feel that the interest and desire shown by the members of Mu Sigma Epsilon coupled with the excellent cooperation they have received from their administration will give Theta Tau a new chapter of which all of us will be proud.

In H. & T..

William H. Nixon
William H. Nixon
Regent Mu Chapter

WMH:dah

