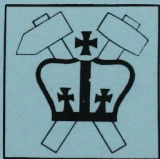


PETITION TO  
THETA TAU FRATERNITY

FROM  
DELTA THETA  
COLUMBIA UNIVERSITY  
NEW YORK, NEW YORK

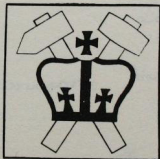




PETITION TO  
THETA TAU FRATERNITY

FROM  
DELTA THETA

COLUMBIA UNIVERSITY  
NEW YORK, NEW YORK



THE  
FIFTY-FIVE

THE  
FIFTY-FIVE  
THE  
FIFTY-FIVE  
THE  
FIFTY-FIVE





PETITION

To the Members of Theta Tau Fraternity:

We, the undersigned, being members in good standing of Delta Theta Fraternity do hereby respectfully petition Theta Tau Fraternity to reactivate Theta Chapter of Theta Tau Fraternity at Columbia University.

We hereby pledge:

THAT WE, the undersigned, are duly matriculated in the Columbia School of Engineering, Columbia University;

THAT WE, the undersigned, will uphold the principles of Theta Tau Fraternity; and

THAT WE, the undersigned, are not affiliated with any competitive organization of Theta Tau Fraternity.

Gabriel A. Rosica

Tobias G. Gottsman

Warren P. Hawrylko

Paul M. Schoen

Russell C. Baccaglini

M. Michael Lowenkron

Paul Kende

Land Whitehill

Robert W. Jamison

Howard L. Treese

Chas. H. Cole, Jr.

Henry E. Squamson

Burgess Andrew Levin

Robert Mayer

PETITION

To the Members of Their Excellencies

We, the undersigned, being members in good standing of  
Duke's University, do hereby respectfully petition Your Excellencies  
to reconstitute Duke University as a University of the State of North Carolina.

We hereby pledge:

THAT WE, the undersigned, are duly matriculated in the  
College School of Engineering, Duke University.

THAT WE, the undersigned, will remain in the possession of  
Duke University, and

THAT WE, the undersigned, are not affiliated with any  
competitive organization of Duke University.

Robert A. Brown  
John R. Brown

William D. Thompson  
John R. Brown

Charles C. Thompson  
W. M. Mitchell

John R. Brown  
John R. Brown

Robert W. Thompson  
John R. Brown

John R. Brown  
John R. Brown

John R. Brown  
John R. Brown

## COLUMBIA UNIVERSITY

Like most American universities, Columbia grew out of a college establishment. It was in 1754 that George II granted a charter to a group of New York citizens for the founding of King's College, dedicated to instruction in "the Learned Languages and the Liberal Arts and Sciences".

King's College stood for nearly a century in downtown Manhattan, close to the present site of City Hall. Among its early students were such later notables of the Revolutionary period as Alexander Hamilton, John Jay, Robert Livingston, and Gouverneur Morris. The war itself interrupted the work of the College, both the British and American troops using its buildings in turn. When it was over, a new state charter gave the College its new name of Columbia.

With the growth of the city in the nineteenth century, Columbia College moved to 49th Street and Madison Avenue, a temporary site from which it planned to move again to the land now occupied by Rockefeller Center. But from 1857 to 1897, the College stayed on Madison Avenue, adding to its body one after the other the School of Law, the School of Political Science, the School of Architecture, the Graduate Faculties, and the School of Engineering.

By 1869, the date of this last addition, Columbia was in fact a University and the Trustees authorized the use of that title.

The several schools moved to Morningside Heights the following year, and under the presidency of Nicholas Murray Butler, which began in 1901, the University rapidly grew in size and national importance. The State of New York formally recognized its University status in 1912.

The school was founded in 1863, and was the first of its kind in the city. It was founded by a group of New York citizens for the purpose of providing instruction in the English language and the liberal arts and sciences.

The school was founded by a group of New York citizens for the purpose of providing instruction in the English language and the liberal arts and sciences. It was the first of its kind in the city. The school was founded by a group of New York citizens for the purpose of providing instruction in the English language and the liberal arts and sciences.

The school was founded by a group of New York citizens for the purpose of providing instruction in the English language and the liberal arts and sciences. It was the first of its kind in the city. The school was founded by a group of New York citizens for the purpose of providing instruction in the English language and the liberal arts and sciences.

The school was founded by a group of New York citizens for the purpose of providing instruction in the English language and the liberal arts and sciences. It was the first of its kind in the city. The school was founded by a group of New York citizens for the purpose of providing instruction in the English language and the liberal arts and sciences.

The school was founded by a group of New York citizens for the purpose of providing instruction in the English language and the liberal arts and sciences. It was the first of its kind in the city. The school was founded by a group of New York citizens for the purpose of providing instruction in the English language and the liberal arts and sciences.

## COLUMBIA SCHOOL OF ENGINEERING

The Engineering School's tradition is venerable, dating from 1864, the year of its establishment as the School of Mines. As an integral member of a two-hundred-year-old academic institution, it has attracted some of the most illustrious scholars and teachers in the world. And yet at no time in its long history has tradition been permitted to stifle progress. The essence of science is change. The School now offers the following programs:

1. A four-year undergraduate program within the School of Engineering leading to a Bachelor of Science degree. This may be in one of the traditional divisions of the engineering profession: chemical, civil, electrical, industrial, mechanical, metallurgical, mineral, and mining engineering. Or it may be in one of the new fields of applied or engineering sciences: engineering geology, engineering or applied mechanics, flight sciences, nuclear engineering science, and applied or engineering mathematics.
2. In cooperation with the School of General Studies and Barnard College, undergraduate programs of study, normally four years in length, leading to the Bachelor of Science degree in these same majors or concentrations.
3. In cooperation with Columbia College and other liberal arts colleges, a professional option program leading to two degrees: a baccalaureate from the college of origin and the Bachelor of Science degree in engineering from Columbia, on the completion of the fifth year.
4. Graduate programs in these fields, requiring one or more years of study beyond the Bachelor of Science degree and leading to the Master of Science degree.
5. Further graduate specialization and research, resulting in extending the frontiers of engineering understanding and knowledge and leading

The Engineering School's tradition is to maintain a high level of scholarship in its students. As an integral member of the University, the Engineering School is expected to contribute to the advancement of knowledge in its field. The School is also expected to maintain a high level of scholarship in its students. The School is also expected to maintain a high level of scholarship in its students.

The School is also expected to maintain a high level of scholarship in its students. The School is also expected to maintain a high level of scholarship in its students. The School is also expected to maintain a high level of scholarship in its students. The School is also expected to maintain a high level of scholarship in its students. The School is also expected to maintain a high level of scholarship in its students.

The School is also expected to maintain a high level of scholarship in its students. The School is also expected to maintain a high level of scholarship in its students. The School is also expected to maintain a high level of scholarship in its students. The School is also expected to maintain a high level of scholarship in its students. The School is also expected to maintain a high level of scholarship in its students.

The School is also expected to maintain a high level of scholarship in its students. The School is also expected to maintain a high level of scholarship in its students. The School is also expected to maintain a high level of scholarship in its students. The School is also expected to maintain a high level of scholarship in its students. The School is also expected to maintain a high level of scholarship in its students.

The School is also expected to maintain a high level of scholarship in its students. The School is also expected to maintain a high level of scholarship in its students. The School is also expected to maintain a high level of scholarship in its students. The School is also expected to maintain a high level of scholarship in its students. The School is also expected to maintain a high level of scholarship in its students.

The School is also expected to maintain a high level of scholarship in its students. The School is also expected to maintain a high level of scholarship in its students. The School is also expected to maintain a high level of scholarship in its students. The School is also expected to maintain a high level of scholarship in its students. The School is also expected to maintain a high level of scholarship in its students.

to the degrees of Doctor of Engineering Science and Doctor of Philosophy.

6. Graduate specialization beyond the Master's level, aimed at perfecting professional degrees of Chemical Engineer, Civil Engineer, Electrical Engineer, Mechanical Engineer, Engineer of Mines, Metallurgical Engineer, Mineral Engineer, and Nuclear Engineer.

The School of Engineering is situated in the greatest center of engineering activity in the world. Because of this, it can offer to its students unusual opportunity to study great engineering and scientific enterprise at first hand and to participate in the activities of many learned societies and engineering organizations.

The School forms part of the main University group on Morningside Heights, West 116th Street and Broadway. The first unit of the new Engineering Center, a thirteen-story laboratory and classroom building, known as the Seeley Wintersmith Mudd Building, stands at Amsterdam Avenue and 120th Street. When the second and third units are completed, this building complex will form one of the most advanced teaching and research centers that the engineering arts and sciences possess anywhere in the world. Other engineering laboratories are maintained nearby at Riverside Drive and St. Clair Place, the engineering departments and other buildings on the campus, as well as at Irvington-on-Hudson (the great Nevis synchrocyclotron laboratory), and Alpine, New Jersey (the Armstrong Field Laboratories for microwave research), and Plainsboro, New Jersey (the unique 5,000 kilowatt pool nuclear reactor of the cooperative Industrial Reactor Laboratories).

The following grades are used in the School of Engineering and Applied Science:

- A - Excellent, superior achievement
- B - Good, exceeding all requirements
- C - Satisfactory, meeting all requirements
- D - Poor, passing but not meeting all requirements
- F - Failure

The quality point index is computed from grades as follows:

- A - Four points per course point
- B - Three points per course point
- C - Two points per course point
- D - One point per course point
- F - No points

There are 530 undergraduates; all the major programs are approved by the Engineers Council for Professional Development.





## DELTA THETA

Delta Theta was originally chartered at Columbia University May 26, 1914, as Theta Chapter of Theta Tau Fraternity. Theta Tau at Columbia enjoyed a long and successful career, initiating ten faculty Brothers and 650 students.

In 1947, Theta Chapter perceived the moral implications of the discriminatory clause and began proceedings to have it removed. After ten years of unsuccessful attempts to have the discriminatory clause removed, Theta Chapter felt that no appreciable progress had been made and that the future promised no change, therefore on Wednesday, November 6, 1957, Theta Chapter severed all connection with Theta Tau and organized again as Delta Theta Fraternity of Columbia University.

Delta Theta went through a period of relative stagnancy during 1959 and 1960. However, in 1961 the fraternity found a source of strength and energy in its new members (most of whom are present members) and became quite active. This year the fraternity has been a reasonably large, cohesive and very active group. It has had considerable professional and social functions while at the same time preparing to apply for reaffiliation with Theta Tau.

Members of Delta Theta have carried on the traditions of Theta Tau in being the students who are most active in school. Delta Theta members have been in charge of the yearbook, the Newsletter, and the Engineering Quarterly. Members have held executive positions in virtually every student organization in the school.

In accordance with the provisions for reaffiliation, Delta Theta has instituted a permanent quarters fund. Our constitution provides for regular contributions to this fund.

Assistant Dean of Students, Howard W. Vreeland, Columbia 1946, is our faculty advisor and a member of Theta Tau.

## DELTA THETA

Delta Theta was an equally important organization in the early days of the Delta Chapter of Delta Theta. It was a social organization that was organized in 1901, and it was the first organization of its kind in the Delta Chapter. It was a social organization that was organized in 1901, and it was the first organization of its kind in the Delta Chapter.

In 1901, Delta Chapter was the first organization of its kind in the Delta Chapter. It was a social organization that was organized in 1901, and it was the first organization of its kind in the Delta Chapter. It was a social organization that was organized in 1901, and it was the first organization of its kind in the Delta Chapter.

Delta Theta was the first organization of its kind in the Delta Chapter. It was a social organization that was organized in 1901, and it was the first organization of its kind in the Delta Chapter. It was a social organization that was organized in 1901, and it was the first organization of its kind in the Delta Chapter.

Members of Delta Theta have carried on the traditions of Delta Theta. It was a social organization that was organized in 1901, and it was the first organization of its kind in the Delta Chapter. It was a social organization that was organized in 1901, and it was the first organization of its kind in the Delta Chapter.

In accordance with the traditions of Delta Theta, Delta Theta has established a program of service. It was a social organization that was organized in 1901, and it was the first organization of its kind in the Delta Chapter. It was a social organization that was organized in 1901, and it was the first organization of its kind in the Delta Chapter.

Assistant Dean of Students, Howard W. Woodruff, Columbia 1912  
is our faculty advisor and a member of Delta Theta.

# CHARTER MEMBERS

	<u>Name</u>	<u>Major</u>	<u>Degree</u>	<u>Activities</u>
President	Gabriel A. Rosica	E.E.	B.S.'63	Columbia Order of The Owls (Secretary), Institute of Radio Engineers
Vice President	Warren P. Hawrylko	E.E.	B.S.'63	Columbia Order of The Owls (Vice President), NROTC, IRE
Treasurer	Russell C. Baccaglioni	M.E.	B.S.'63	Columbia Order of The Owls (Treasurer), Dumbells (President), A.S.M.E., Beta Theta Pi (Secretary), Freshman Crew, Glee Club
Recording Secretary	Robert Jamison	E.E.	B.S.'63	Institute of Radio Engineers, American Institute of Electrical Engineers
Corresponding Secretary	Paul Kende	E.E.	B.S.'63	Freshman and varsity fencing
Sergeant-at-Arms	Harry E. Squassoni	I.E.	B.S.'63	Lightweight football, Columbia Order of The Owls, Dumbells, Engineering Quarterly (Art Editor), Engineering Yearbook (Art Editor), A.I.I.E., A.S.M.E., Engineering Newsletter (illustrator)
Pledge Master	Howard L. Freese	Chem.E.	B.S.'64	AICHE, Lightweight football, Beta Theta Pi (House Manager), Glee Club, Student Laundry Agency, American Rocket Society, (Student Member)
	Charles F. Cole, Jr.	E.E.	M.S.'63	
	Burgess A. Levin	E.E.	B.S.'63	Engineering Newsletter (Editor-in-Chief), Class of '63E Vice President, Metropolitan Joint Student Council (Chairman), AIEE-IRE Delegate to Columbia University Student Council, Freshman baseball, 8E $\pi$ Fraternity, Chairman Inter-school Communications Comm.



<u>Name</u>	<u>Major</u>	<u>Degree</u>	<u>Activities</u>
Joel M. Schoen	E.E.	B.S.'65	Engineering Quarterly (Editor), Engineering Yearbook, Freshman Directory (Editor), Archimide Society, Student Council (Member)
Tobias A. Gottesman	C.E.	B.S.'65	Class of '65E President, Archimide Society, Freshman fencing, Engineering Quarterly (Editorial Board)
Michael Lowenkron	E.E.	B.S.'65	Varsity baseball
Laird Whitehill	E.E.	B.S.'65	Archimide Society
Robert Mayer	C.E.	B.S.'65	Wrestling, Archimide Society

#### OTHER MEMBERS

Theodore Bielen	Chem.E.	B.S.'64	Psi Upsilon Fraternity, Intramural football, baseball, basketball
Theodore Diesenhaus	E.E.	B.S.'66	
Arthur Epley	Eng.Math.	B.S.'64	Sigma Chi Fraternity, Alpha Chi Honor Society
Robert Goldstein	N.E.	B.S.'64	
Zachary Grossman	E.E.	B.S.'66	
Robert Halden	Chem.E.	B.S.'64	Member student chapter AICHE
Michael Jefferis	Chem.E.	B.S.'64	Phi Gamma Delta, International Students Club
Gerald Kocher	Chem.E.	B.S.'64	Newman Club, Student chapter AICHE
Kenneth Merrill	Flight Sciences	B.S.'66	NROTC, Rifle team
John Mineo	M.E.	B.S.'65	Archimide Society, Varsity baseball
William Morrison	E.E.	B.S.'65	Archimide Society, Kingsmen
Robert Power	Chem.E.	B.S.'64	Sigma Chi, Intramural football volleyball





<u>Name</u>	<u>Major</u>	<u>Degree</u>	<u>Activities</u>
Victor Revenko	Chem.E.	B.S.'64	Sigma Chi, Fencing
Steven Shrier	Eng.Math.	B.S.'64	Russian Club
Robert Vambery	E.E.	B.S.'65	Judo Club
Robert Wilkov	E.E.	B.S.'64	Varsity fencing (Manager), Archimide Society, Institute of Radio Engineers, Vice President Junior Class
Michael Wortham	Chem.E.	B.S.'64	
Victor Marksich	E.E.	B.S.'66	
John Spear	I.E.	B.S.'64	

#### LOCAL ACTIVITIES AT COLUMBIA

1. Columbia Order of The Owls -- A Camp Columbia Alumni Association
2. Dumbells -- An Engineering School Senior Honorary Society
3. Engineering quarterly -- Technical magazine with articles submitted by Faculty and Alumni
4. Engineering Newsletter -- Newspaper for the Engineering School
5. Student Laundry -- Laundry for students of Columbia, which is run by students
6. Archimide Society -- Engineering School Service Society
7. WKCR -- Columbia University Radio Station
8. Kingsmen -- Singing group on Columbia campus





FIRST ROW LEFT TO RIGHT: V. Marksich, R. Mayer, M. Lowenkron,  
R. Vambéry, J. Kocher, T. Bielen, M. Wortham

SECOND ROW LEFT TO RIGHT: P. Kende, G. Rosica, Z. Grossman,  
J. Schoen, R. Halden, R. Powers, R. Goldstein,  
T. Disenhaus, S. Shrier, H. Squassoni,  
Prof. Vreeland (Advisor), R. Baccaglioni

THIRD ROW LEFT TO RIGHT: W. Morrison, R. Jamison, K. Merrill,  
L. Whitehill, B. Levin, J. Spear, J. Mineo,  
V. Revenko, T. Gottesman, W. Hawrylko, C. Cole



## THETA TAU

NATIONAL PROFESSIONAL ENGINEERING FRATERNITY

15 January 1962

Executive Council of Theta Tau

Dear Brothers,

I am glad to write in support of the petition being submitted at the School of Engineering, Columbia University. From my several contacts with the group I would judge them to be a good representation of the mature capable students at Columbia. They have had at their disposal all the information supplied by the Fraternity, and should be aware thoroughly as to the obligations and responsibilities involved in a Chapter of Theta Tau. It is timely for the group to reinstate Theta's traditions on campus, in the year when the School has moved into a great new Engineering Center.

In H and T,

*A. Dexter Hinckley*  
A. Dexter Hinckley  
Past Grand Regent

SECRET

11 January 1952

Executive Council of the U.S.

Dear Sirs:

I am glad to write in support of the position being  
presented by the Council of the U.S. in the  
presently pending matter. I would like to  
state my personal conviction that the  
to be a good representation of the  
of Columbia. I am sure that the  
information regarding the  
interests of the U.S. and the  
involved in the matter of the  
state is within the jurisdiction of the  
which the Council has now taken.

Sincerely,  
J. Edgar Hoover

J. Edgar Hoover

Director, FBI

Columbia University in the City of New York | New York 27, N.Y.

SCHOOL OF ENGINEERING AND APPLIED SCIENCE  
Office of the Dean

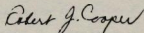
December 19, 1962

To the Members of Theta Tau:

This letter is in behalf of the students of Delta Theta local engineering fraternity at Columbia University School of Engineering and Applied Science.

The academic achievement of the members of this group is high. They have participated and been elected leaders in many of the student organizations of the school. In my judgment, they are mature, responsible students, well motivated toward the profession of engineering.

Without hesitation, I endorse Delta Theta in their program for reactivation as a chapter of Theta Tau national engineering fraternity.



Robert J. Cooper  
Assistant Professor, Graphics  
Director of Student Activities

RJC:eh



Columbia University is the City of New York | New York 27, N.Y.

Division of Engineering and Applied Sciences  
Office of the Dean

December 18, 1963

To the Members of Delta Tau

This letter is in behalf of the students of  
Delta Tau local engineering fraternity at Columbia  
University School of Engineering and Applied Sciences.

The academic achievement of the members of Delta  
Tau is high. They have participated and been elected  
leaders in many of the student organizations of the  
university. In my judgment, they are mature, responsible  
students, well motivated toward the profession of  
engineering.

Without hesitation, I endorse Delta Tau in  
their program for recognition as a chapter of Delta  
Tau national engineering fraternity.

*Robert L. Cooper*

Robert L. Cooper  
Assistant Professor, Chemistry  
Director of Student Activities

250-25

Columbia University in the City of New York | New York 27, N.Y.

SCHOOL OF ENGINEERING AND APPLIED SCIENCE  
Office of the Dean

December 19, 1962

To the Members of Theta Tau Fraternity:

To the petition for reactivation of Theta Chapter of Theta Tau, I wish to add my endorsement of the group of students represented in that application. This group, as Delta Theta, has seriously considered affiliation with Theta Tau for some time, and especially during the past year when it has been my privilege to act as their faculty advisor.

I have found these students to be sincere in their desire to participate in the development of the professional status of engineering, and believe that their motivations and capabilities are completely consistent with aims of Theta Tau.

Sincerely,

*Howard W. Vreeland* —

Howard W. Vreeland  
Assistant Dean of Students

HWV:eh

February 12, 1954

To the Members of the Executive Committee

In the position now vacated by the late  
Mr. [Name], I wish to say a few words as  
group of students represented in that group. This  
group, as I said, had a long and distinguished  
with them the few men and women who had been  
past year and is now being replaced by a new  
group of students.

I have found these students to be very  
active in their efforts to improve the  
international status of the university and  
international and technical and scientific work  
with them at their own.

Sincerely,

James C. Thompson  
President, Board of Trustees

NY 100



