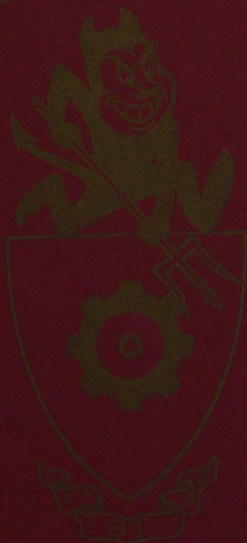
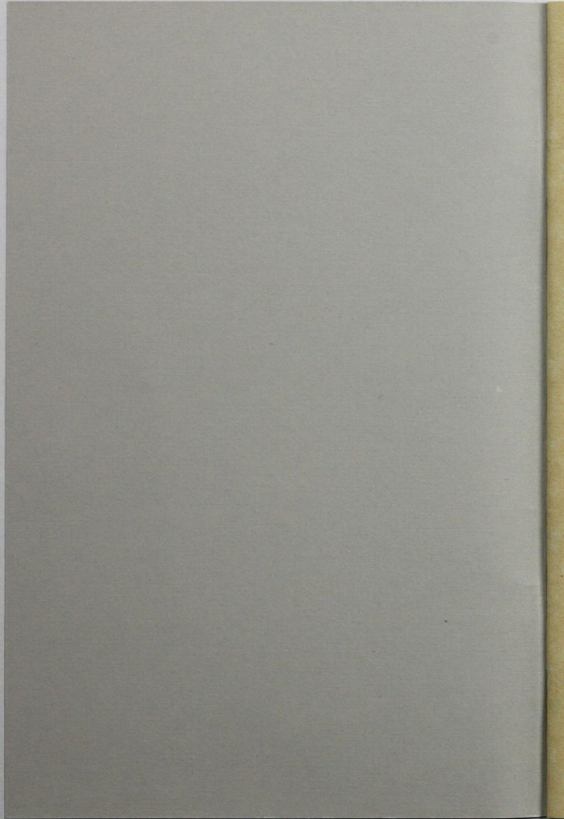


ARIZONA STATE UNIVERSITY



COLONY OF THETA TAU



The
Arizona State University
Colony of Theta Tau

Proudly Introduces
its
Chapter Petition

Arizona State University Colony of Theta Tau

ASU Colony of Theta Tau
Reach 3001

Arizona State University
Tempe, Arizona 85827-3001

Mr. Robert E. Pope, P.E.
Executive Director
Theta Tau Professional Engineering Fraternity
655 Craig Road, Suite 128
St. Louis, Missouri 63141-7132

Dear Mr. Pope,

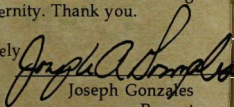
Being in Theta Tau has been a rewarding experience for us all. We eagerly anticipate becoming a Theta Tau Fraternity chapter. From banquets to intramurals, every member has enjoyed the wonderful gift of brotherhood that Theta Tau has brought.

As Regent, I can assure you and your brothers that these unique and diverse individuals have become a unified group. Everyone has worked hard for our desired goal - becoming a chapter of Theta Tau. The hard work and dedication we have put forth has not only contributed to our goal, but also to building a strong union among us.

Founding our Colony of Theta Tau has truly been a fulfilling experience. It has given me opportunities to learn from my fellow brothers, and has taught me to be a leader. After attending National and Regional Conferences, I experienced the great pride that the members of this fraternity hold. I too am very proud of my colony, and hold much pride in the Theta Tau name.

Arizona State University looks forward to becoming an associate of the Theta Tau Fraternity. Thank you.

Sincerely



Joseph Gonzales
Regent

Arizona State University Colony of Theta Tau

ASU Colony of Theta Tau

Reach 3001

Arizona State University

Tempe, Arizona 85827-3001

Mr. Robert E. Pope, P.E.

Executive Director

Theta Tau Professional Engineering Fraternity

655 Craig Road, Suite 128

St. Louis, Missouri 63141-7132

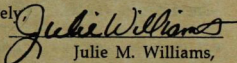
Dear Mr. Pope,

It is with great pride that I write this on behalf of the Arizona State University Colony of Theta Tau. We have taken many months to prepare this petition for chapter status because we wanted to be the strongest colony possible before its submission. I can assure the Brothers of Theta Tau that we are ready to become a chapter.

As a colony, we have developed a strong rushing and pledging program to insure our longevity. We have ongoing community service activities, fund-raisers, and professional and academic development programs. A housing fund has also been started as the first step in formulating a plan to obtain a house.

While our colony was growing into what it is today, we were overcoming obstacles that might have destroyed weaker groups. Although determination and hard work have helped to keep us strong, the biggest factor has been the Brotherhood that we all feel toward each other. ASU Colony is such a diverse group of people that we could have only found this fraternal bond through Theta Tau.

Sincerely,



Julie M. Williams,
Vice Regent

Arizona State University Colony of Theta Tau

ASU Colony of Theta Tau

Reach 3001

Arizona State University

Tempe, Arizona 85827-3001

Mr. Robert E. Pope, P.E.

Executive Director

Theta Tau Professional Engineering Fraternity

655 Craig Road, Suite 128

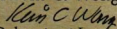
St. Louis, Missouri 63141-7132

Dear Mr. Pope,

I am pleased to present to the Brothers of Theta Tau a petition for chapter status from the Arizona State University Colony of Theta Tau. The petition in itself is simple. However, the accomplishments made by those listed within these pages are due to great fraternal dedication. In the last two years, the ASU colony of Theta Tau has continued to meet weekly through the summer and winter breaks, which has afforded the time to set a substantial program in motion. Already, three pledge classes have given twenty three members for initiation, and fund raisers have brought in enough money to pay for not only the initiation banquets, but the beginning of our housing trust fund as well. Our ongoing daily tutoring program at a local high school has been a success with the students there, as has our thanksgiving meal donations to needy families. Many professional development events ranging from power plant tours to resume workshops to job interviewing skills have benefitted our membership.

As was first mentioned to us at our first meeting in January, 1993, a fraternity is only as strong as its Brotherhood. In this case, I believe that we have a solid foundation on which to build a chapter that all Brothers of Theta Tau can be proud of.

Kevin C. Wong



Delegate at Large

Arizona State University

History

Arizona State University was originally founded on February 26, 1885, by House Bill 164 as the Tempe Normal School. In 1945, it was recognized as the Arizona State College before it came to its present entitlement in 1958. Located in Tempe, Arizona State University offers the diverse challenges and opportunities of the fourth largest public university in the United States.

Nearly 700 acres lay ground to ten undergraduate colleges, including: Architecture and Environmental Design, Business, Education, Engineering and Applied Sciences, Fine Arts, Liberal Arts and Sciences, Nursing, Public Programs, and Social Work, as well as a University Honors College and an extensive graduate program. Degrees and offered at a B.A. or B.S. level in over 150 programs, Masters in over 90 programs, and Doctoral or terminal degrees in 50 programs. Accreditation is accomplished through 25 separate entities for individual colleges. Overall, ASU is accredited by the North Central Association of Colleges and Secondary Schools.

Over 45,000 students benefit from Arizona State University's eight libraries, displaying a combined 4.9 million bound and microfilm volumes, as well as 34,000 periodical subscriptions. There are 17 computer laboratory sites on campus equipped with hundreds of DOS and Macintosh terminals. An Intel laboratory for computer programming languages is also a valuable asset to the students. Of notable mention is the new Computing Commons Building, which features a state of the art

computer network to meet the needs of a rapidly growing university.

Other landmarks on campus include housing for 5,400 students in 13 residents halls and university Greek houses. Grady Gammage Memorial Auditorium, designed by Frank Lloyd Wright, is a universal center for the performing arts. The J. Russell and Bonita Nelson Fine Arts Building is a wondrous aggregate of buildings that house art galleries, dance laboratories, and several studios. ASU is also a home to many other smaller galleries, theaters, and museums. The Arizona Board of Regents, the body that oversees all Arizona universities, owns KAET. KAET is a 24-hour public broadcasting television station that is run by ASU students on campus.

With the establishment of the Sun Devil Foundation in 1946, ASU has developed a strong commitment in sports. Arizona State University is a member of the PAC 10 athletic conference, competing in badminton, baseball, basketball, cross country, diving, football, golf, gymnastics, softball, swimming, tennis, track and field, volleyball, and wrestling. In a typical season, ASU will produce several All-Americans in various sports.

History

Arizona State University

College of Engineering and Applied Sciences

Arizona State University has offered an engineering program since the mid - Fifties when the College of Applied Arts and Sciences became the College of Engineering Sciences. Students could then choose the traditional four year Bachelor of Science Degree program instead of the two year pre-engineering degree program. In 1958 and 1961, the Masters and Ph.D. Degrees were added respectively.

Currently, the College of Engineering and Applied Sciences is divided into three schools: Agribusiness and Environmental Resources, Construction and Technology, and Engineering. The ABET accredited School of Engineering offers degrees in the following departments: Chemical, Bio, and Materials; Civil; Computer Science; Electrical; Industrial and Management Systems; and Mechanical and Aerospace. Other degrees, which are offered by the Engineering Special Studies and Engineering Interdisciplinary Studies, are Engineering Mechanics, Manufacturing, Microelectronics Manufacturing, Pre-Med, Systems Engineering, and Geological Engineering.

The College of Engineering and Applied Sciences recognizes these honor and professional societies: ASU Corporate Leaders Association, The Association for Computing Machinery, The American Indian Science and Engineering Society, The American Institute of Aeronautics and Astronautics, The American Institute of Chemical Engineers, The American Society of Civil Engineers, The American Society of Mechanical Engineers, The ASU Student Chapter of the Society for Range Management, AZ_HAZ, The Biomedical Engineering Society, Eta Kappa Nu, The Institute of Electrical and

Electronics Engineers, Industrial Engineering Toastmasters, The Institute of Industrial Engineers, The National Society of Black Engineers, Pi Tau Sigma, The Society of Women Engineers, Tau Beta Pi, Upsilon Pi Epsilon, and Chi Epsilon.

ASU's School of Engineering strives to be a leader in the field of academics, research, and community relations. The many research centers and computer and technological facilities encourage the interaction of the university community (students, professors, and staff) with the metropolitan community (professionals in industry, secondary and elementary institutions, and ASU's neighborhood). This interaction has lead ASU to earning Research I Status and acquiring top notch professors, as well as developing programs like the Engineering Summer Institute (an advanced summer session for minority high school students in Arizona) and the Creative Engineering Program. The Creative Engineering Program was a program in the 1960's that taught the design process by including hand-on work to fully explain classroom lecturing. Many schools have adopted this program and use it today.

After graduating from the College of Engineering and Applied Sciences at Arizona State University, students not only possess the skills, but also the character and ideals needed for professional careers.

College of Engineering and Applied Sciences

Arizona State University

Research I Institute

Arizona State University Colony of Theta Tau

History

Early in the fall semester of 1992, several engineering students at Arizona State University were contacted by the Theta Tau National Office about starting a local colony. The students were interested, and in spring, were given potential member interviews by national officers and Chi chapter members. The Local members then selected a third letter, the Greek delta, as a symbol of change, to be added to the national fraternity's name in order to designate the ASU Local. Bylaws, appropriately tentative, were established to set guidelines until the Local achieved Colony status.

The purpose of the Local was to grow until it could petition the national fraternity for Colony status. The members held several lunches and other activities to strengthen their brotherhood and plan the building process ahead. Committees were established to work on the Colony petition, to attract other interested engineering students, and to draft needed bylaws.

During the March '93 Spring Break, several members attended the Regional Conference at the Chi house in Tucson. This event gave the Local members a chance to seek out their counterparts in other chapters, and gain insight on how their jobs should be performed. The Local members were delighted to find that their aspirations were mirrored in the qualities already existing in the other chapters, and became further inspired to become a colony.

The pace quickly intensified; community service projects were set up and the first pledge class started. The members initiated the professional development program with a tour of the Ocotillo Power plant. This particular professional development was quite useful to the members, as many were enrolled in an engineering design class that required solar power designs.

During summer, representatives of the Local went to the national conference in Indiana. What they experienced at the national conference was instrumental in the Local's further growth.

When the Fall '93 semester began, the Local organized and submitted the Colony Petition. The petition was accepted by the national officers, and on October 23, 1993, Theta Tau Delta became The Arizona State University Colony of Theta Tau. This ceremony filled the members and the then pledges with motivation, brotherhood, and dreams of chapter status.

Pledging, community service, and social events consumed the time of the new Colony members. The local high school had a large demand for math and science tutors. The Colony sent representatives to the regional conference at Zeta, and indulged in the wonderful Chi house annual retreat.

Spring '94 started off a new pledge class and the entry into Intermural Sports. The Colony supported teams in volleyball and soccer, and made the semifinals in soccer. The fund raising program began with a Theta Tau car wash, which was very successful. Car washes have thus become a dependable source of Colony funding. The professional development programs continued, and the Colony held its first semiannual retreat in May.

Most efforts during Summer '94 were dedicated to planning and preparing for a large potential Fall Pledge Class. The Rush Committee began by mailing out over 200 pamphlets and letters to prospective members. In addition, a handbook was developed to help guide future pledges through their pledge period. The Arizona sun encouraged many car washing fund raisers. Near the close of summer, delegates were sent to the 1994 National Convention in Minneapolis, Minnesota, where the ASU Colony was given the Best Display Award.

Fall '94 started off with the largest recruitment of pledges within ASU Colony history, totalling 19 pledges. This success signaled the beginning of several more achievements that would follow in the next few months. A semester budget was created and carried through nearly to the dollar. The professional development committee organized such things as plant tours, resume writing workshops, and interviewing seminars. Intramurals helped to develop teamwork skills that brought the Colony to the finals in volleyball, and semifinals in football. The Fall '94 Retreat showed members and pledges alike how strong the bonds of the Colony had become. At Regionals in Dallas, Texas, the nine Colony representatives enjoyed making many new friendships and contacts. Finally, the Fall '94 semester was topped off by the successful acquisition of a central office for the Colony on the ASU campus.

As the Semester came to a close, the Colony began to bring together the petition for chapter status. A visit from Regional Director Richard "Trey" Wiley coincided with the Gamma pledge class initiation, where the first Biannual Awards were given. At this event, the pledge class presented the Colony with a ΘT Gear, constructed from the National Gear blueprints.

Housing Intention

It is the intention of the petitioner to obtain permanent fraternity housing, as owned by a housing corporation formed by a board of trustees composed of Alumnus. In a manner as to prepare for such a corporation, a housing trust fund has been set up and has been accruing interest for nearly one fiscal year. The funds for deposit are presently composed of all donations to the Colony, all funds in budgetary excess at the completion of each semester, and all designated fund raisers. If and when chapter status is granted, regular housing promissory notes will be taken out by all members at the time of initiation.

Permanent Headquarters

The Colony has just finished moving into an office in the engineering center, G-wing, room 223. It now contains our academic support files, all Theta Tau forms and materials, our display case, flag, and replica of the members' badge. The office serves as a central meeting point for members and pledges, and also provides an environment for studying not only Theta Tau material, but academics as well. The office door is adorned with a large Theta Tau in Greek symbols, appropriately in gold plate with dark red letters.



Greg Albert

Previous Positions:

Major:

G.P.A.

Address:

Social Events Chair

Chemical Engineering

1.94

5009 N. 15th Ave.

Phoenix, AZ 85013



Thomas A. Bair II

Corresponding Secretary

Previous Positions:

Major:

G.P.A.

Address:

Treasurer

Housing Committee Chair

Computer Systems Engineering

1.86

1709 S. Jen Tilly Lane #82

Tempe, AZ 85281

Richard M. Best

Major:
G.P.A.:
Address:

Civil Engineering
3.05
4314 E. Silverwood Dr.
Phoenix, AZ 85044



Ricardo D. Bten-Willner

Philanthropy Chair

Major:
G.P.A.:
Professional or
Honor Societies:
Address:

Biomedical Engineering
3.58
Alpha Lambda Delta
1701 E. 8th St. #280
Tempe, AZ 85281

Kevin K. Biscbel

Petition Coordinator

Previous Positions:

Major:

G.P.A:

Professional or

Honor Societies:

Address:

Pledge Master

Mechanical Engineering

3.19

Golden Key Honor Society

Society of Automotive Engineers

36 W. Del Rio Cir.

Tempe, AZ 85282



John Braunbeck

Major:

G.P.A:

Professional or

Honor Societies:

Address:

Industrial Engineering

2.79

National Honor Society

725 S. Beck #203

Tempe, AZ 85281



Karin A. Brueschweiler

Major:

G.P.A:

Professional or

Honor Societies:

Address:

Biomedical Engineering

3.70

ASU Honors College

1509 W. 5th St.

Tempe, AZ 85281



Martin Burns

Rush Chair

Major:

G.P.A:

Address:

Civil Engineering

3.22

1717 S. Dorsey Ln. #2126

Tempe, AZ 85281

Juan Carlos De La Torre

Major:
G.P.A.:
Address:

Electrical Engineering
2.57
1231 E. Malibu Dr.
Tempe, AZ 85282

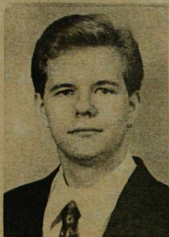


Leslie Cook

Professional Development

Major:
G.P.A.:
Address:

Computer Systems Engineering
3.00
1707 S. 77th St.
Mesa, AZ 85208



David Golden

Fund Raising Chair

Major:

G.P.A:

Address:

Aerospace Engineering

2.00

1216 E. Vista Del Cerro #1130 N
Tempe, AZ 85281



Joseph A. Gonzales

Regent

Previous Positions:

Major:

G.P.A:

Professional or

Honor Societies:

Address:

Scribe

Vice-Regent

Computer Systems Engineering

3.58

Upsilon Pi Epsilon

Tau Beta Pi

6000 S. Juniper

Tempe, AZ 85283

John E. Q. Hughes

Chi Relations Chair

Previous Positions:

Major:

G.P.A.:

Professional or
Honor Societies:

Address:



President

Delegate at Large
Chemical Engineering
2.96

Alpha Lambda Delta
National Honor Society
A.I.C.E

1709 S. Jen Tilly Lane #82
Tempe, AZ 85281

Kazuaki Itaya

Previous Positions:

Major:

G.P.A.:

Professional or
Honor Societies:

Address:

Treasurer

Pledge Master
Electrical Engineering
2.64

Minority Math and
Science Honor Society
1709 S. Jen Tilly Lane #82
Tempe, AZ 85281



Weilun Lee

Philanthropy Co-Chair

Major:
G.P.A.:
Professional or
Honor Societies:
Address:

Computer Systems Engineering
2.77
Golden Key Honor Society
Alpha Lambda Delta
8432 N. 86th St.
Scottsdale, AZ 85258



Brian Lien

Major:
G.P.A.:
Address:

Computer Systems Engineering
2.31
3801 W. Verde Ln.
Tempe, AZ 85282



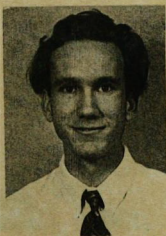
Michelle Lunnon

Treasurer

Major:
G.P.A:
Professional or
Honor Societies:
Address:

Mechanical Engineering
2.14
Phi Eta Sigma

1835 E. Don Carlos #204
Tempe, AZ 85281



Brian Maurer

Major:
G.P.A:
Address:

Mechanical Engineering
2.78
3730 S. Mill #E205
Tempe, AZ 85282



Steven A. Mooney

Marshal

Major:
G.P.A.:
Address:

Mechanical Engineering
3.65
3713 E. Fairfield St.
Mesa, AZ 85213



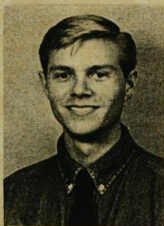
Rosaura Nolasco

Pledge Master

Previous Positions:

Major:
G.P.A.:
Professional or
Honor Societies:
Address:

Newsletter Editor
Corresponding Secretary
Professional Development
Electrical Engineering
3.26
R.E.A.C.H.
S.H.I.R.E.
1235 S. Dorsey Lane #103
Tempe, AZ 85281



Greg Ockenfels

Major:
G.P.A.:
Address:

Mechanical Engineering
2.58
3424 W. Wethersfield
Phoenix, AZ 85029



Alan Nolan Ross

Scribe

Previous Positions:
Major:
G.P.A.:
Professional or
Honor Societies:
Address:

Campus Advising Chair
Industrial Engineering
2.74
I.I.E. S.
S.H.P.E.
424. West 9th St. #10
Tempe, AZ 85281



Paul A. Saric

Previous Positions:

Major:

G.P.A.:

Professional or

Honor Societies:

Address:

Professional Development

Marshal

Mechanical Engineering

2.70

American Society of

Mechanical Engineers

8368 S. Forest Ave.

Tempe, AZ 85284



Deborah A. Shane

Previous Positions:

Major:

G.P.A.:

Professional or

Honor Societies:

Address:

Vice-President

Philanthropy Chair

Mechanical Engineering

2.80

Society of Automotive Engineers

Sigma Kappa Sorority

Petan Ranch

Tuscarora, Nevada 89834



Elizabeth Torma

Social Chair

Previous Positions:

Major:

G.P.A:

Address:

Fund Raising Chair
Mechanical Engineering
2.64

1307 E. Main Street
Mesa, AZ 85203



Kristin A. Wiley

Previous Positions:

Major:

G.P.A:

Professional or
Honor Societies:

Address:

Scribe
Chemical Engineering
3.00
A.I.C.E.
A.S.I.E.
Gamma Beta Phi
5521 S. Heather Dr.
Tempe, AZ 85283



Julie Williams

Vice-Regent

Major:
G.P.A:
Professional or
Honor Societies:

Address:

Civil Engineering
3.19
A.S.C.E.
Industrial Engineering Toastmasters
Toastmasters
1440 E. Broadway #1013
Tempe, AZ 85282

Erik Winkelman

Major:
G.P.A:
Professional or
Honor Societies:
Address:

Electrical Engineering
2.80
I.E.E.E.
3824 N. N. 43rd Place
Phoenix, AZ 85018



Previous Positions:

Major:

G.P.A.:

Professional or

Honor Societies:

Address:

Kevin C. Wong

Delegate At Large

Regionals Chair

Pledge Master

Colony Petition Chair

Regent

Mechanical Engineering

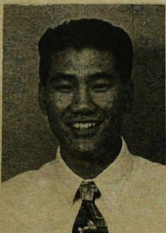
2.91

Society of Automotive Engineers

C.A.P.A.A.

774 Clipper Way

Sacramento, CA 95831



Major:

G.P.A.:

Address:

Rocky Wong

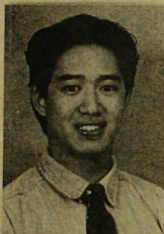
Intramurals Chair

Civil Engineering

1.20

1901 W. Cortez Cir.

Chandler, AZ 85224



Tony Yu

Previous Positions:

Major:

G.P.A.:

Professional or

Honor Societies:

Address:

Athletic Activities Chair

Electrical Engineering

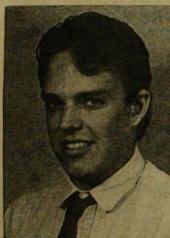
2.80

Gamma Beta Phi

Alpha Lambda Delta

2834 S. Extension #1021

Mesa, AZ 85210



Ryan Zabn

Major:

G.P.A.:

Address:

Mechanical Engineering

3.20

12418 N. 74th St.

Scottsdale, AZ 85260

Arizona State University

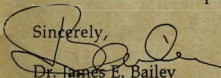
College of Engineering and Applied Sciences
Tempe, Arizona 85287-5506
602/965-3421
FAX: 602/965-2267

Dear Mr. Pope:

This letter is in regard to the Arizona State Colony of Theta Tau application to become a chapter. This outstanding group of engineering students have asked for my support in this cause. I am also informed that even though they have been a colony for only a year, they have met all the criteria required by your national organization to become a chapter. To me this shows the kind of incentive and dedication this university arouses in the student body.

The Arizona State Engineering College has found this organization to be enthusiastic, dedicated, and professional in the mission to achieve chapter status. The addition of an engineering fraternity at Arizona State University would serve to unite students of the various disciplines under the common goal of engineering excellence. I again recommend that this petition be approved, and look forward to the foundation and establishment of a chapter at Arizona State University.

Sincerely,



Dr. James E. Bailey

Professor of Engineering
Dept. of Industrial/Management Systems Engineering
Advisor to the ASU Colony of Theta Tau

Arizona State University

College of Engineering and Applied Sciences

Tempe, Arizona 85287-5506

602/965-3421

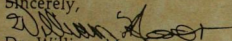
FAX: 602/965-2267

Dear Mr. Pope:

I am delighted to encourage the establishment of the Arizona State University Colony of Theta Tau as a chapter. This dedicated and aspiring group of students lead by Kevin Wong and Joseph Gonzales has established a cornerstone for a meritorious organization known as Theta Tau. They have kept me apprised and informed of their activities and progress throughout their Colony status. They have manifested a commitment to personal and professional growth in the area of engineering excellence.

I believe that the addition of a professional engineering fraternity that is open to all engineering disciplines would be a valuable asset to our engineering program. I would therefore recommend that the Arizona State University Colony of Theta Tau application for chapter status be approved at this time.

Sincerely,



Dr. William Moor

Associate Professor of Engineering
Dept. of Industrial/Management Systems Engineering
Advisor to the ASU Colony of Theta Tau

Tempe Union High School

Tempe Union High School
1730 S. Mill Ave
Tempe, AZ 85282

Mr. Robert E. Pope, P.E.
Executive Director
Theta Tau Professional Engineering Fraternity
655 Craig Road, Suite 128
St. Louis, Missouri 63141-7132

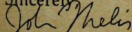
Dear Mr. Pope:

This letter is in regard to the Arizona State University Colony of Theta Tau application for chapter status. I would like to join the chorus of supporters in their bid to attain chapter status from your prestigious organization.

The members of the Theta Tau Colony approached me regarding volunteering their time and personnel in pioneering a tutoring program for my students in the areas of math and science. I am excited to have engineering students on campus on a regular basis and helping the students of Tempe High School. Their efforts have been well recognized by the teaching staff, and appreciated. It is uplifting to witness the level of enthusiasm displayed by the representatives of Theta Tau.

I again recommend that this petition be approved, and I look forward to their continued commitment in providing a genuine service to their community.

Sincerely,



John Melis

Math Department Head
Tempe High School

HLH PARTNERSHIP

MECHANICAL & ELECTRICAL
PROFESSIONAL CONSULTANTS

11627 W. 79TH STREET
LENEXA, KANSAS 66214
(913) 492-3377
(913) 492-3428 FAX

December 27, 1994

To: Robert E. Pope

Re: Arizona State University Colony Chapter Status

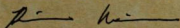
Bob,

It is my pleasure as Western Regional Director to support the Arizona State University Colony in it's bid for chapter status in Theta Tau Fraternity. After visiting with many of the members of this colony, I feel confident that they will make a great chapter.

This group started out on the long journey towards chapterhood as individuals and have come together to form a fraternity. While visiting with the colony, I was able to view many of their standard business practices, social functions, and an initiation. Throughout all of these fraternity functions, I got the feeling that this group had dealt with many of the issues facing a colony with remarkable success.

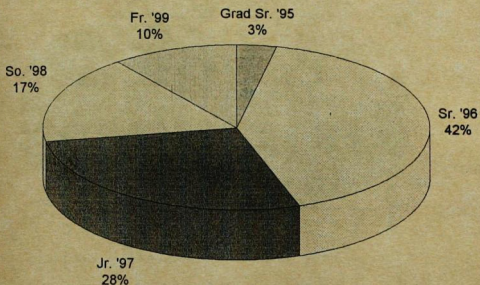
ASU colony is a diverse group of people with all the necessary tools required to build a great chapter of Theta Tau . They should have no problem making the transition from colony to chapter, and I feel that they would make an excellent addition to our fraternity.

Richard "Trey" Wiley

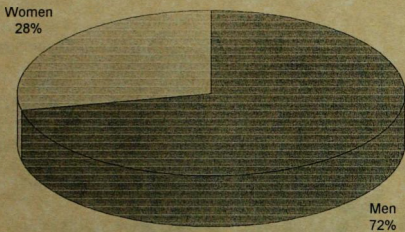


Western Regional Director

ASU Colony Composition (32 Actives)

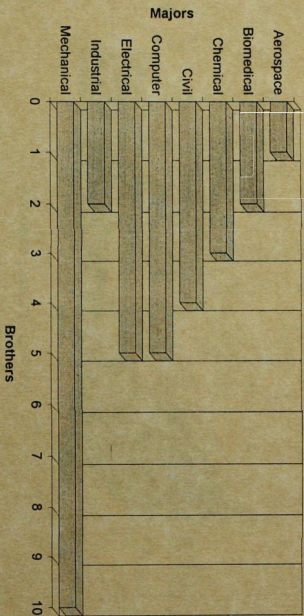


Gender Population

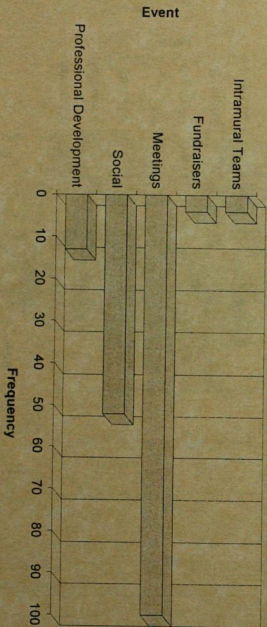


Versus 18%Women/82%Men for college on whole.

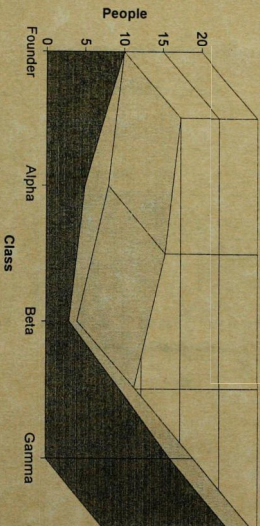
Degrees



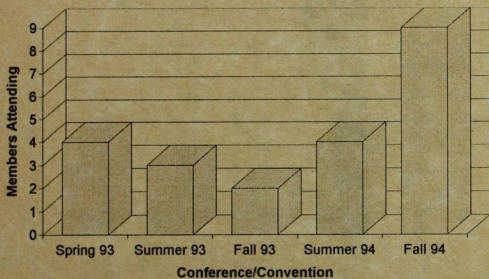
Activities (Jan 93 - Dec 94)



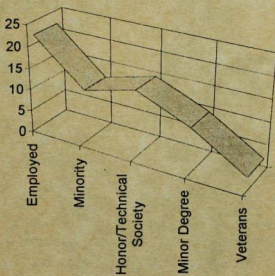
Class Size and Initiates



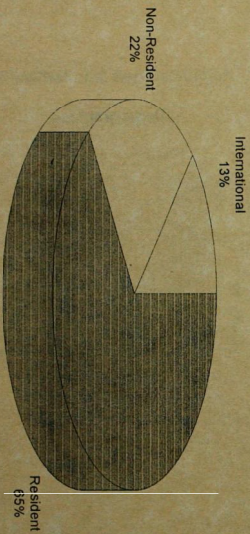
Regional/National Representation



Demographics



Residency



We, the undersigned, Brothers of the Arizona State University Colony of Theta Tau, do hereby petition Theta Tau National Engineering Fraternity for Chapter Status. It is our resolve to obtain engineering degrees at Arizona State University, and do hereby declare lack of affiliation with all competing fraternities. We also certify that we meet all of the eligibility requirements for such membership and that the Arizona State University Colony of Theta Tau meets all of the requirements to become a chapter.



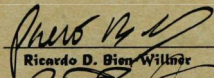
Greg Albert



Thomas Arnold Bair II



Richard M. Best



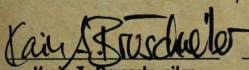
Ricardo D. Bien Willner



Kevin K. Bischel




John Braunbeck



Kapin A. Brueschweiler



Martin Burns



Juan Carlos De La Torre




Leslie Cook




David Golden



Joseph Gonzalez



John E. Q. Hughes



Kazuaki Itaya

Weilun Lee

Weilun Lee

Brian Lien

Brian Lien

Michelle Lunnon

Michelle Lunnon

Brian P Maurer

Brian Maurer

Steven A. Mooney

Steven A. Mooney

Rosaura Nolasco

Rosaura Nolasco

Greg Ockenfels

Greg Ockenfels

Alan N. Ross

Alan Nolan Ross

Paul A. Saric

Paul A. Saric

Deborah A. Shane

Deborah A. Shane

Elizabeth A. Torma

Elizabeth Torma

Kristin A. Wiley

Kristin A. Wiley

Julie Williams

Julie Williams

Erik Winkelman

Erik Winkelman

Kevin C. Wong

Kevin C. Wong

Rocky Wong

Rocky Wong

Tony Yu

Tony Yu

Ryan Zahn

Ryan Zahn

-
ue
co
S
-
-
7
m
-
-
-



