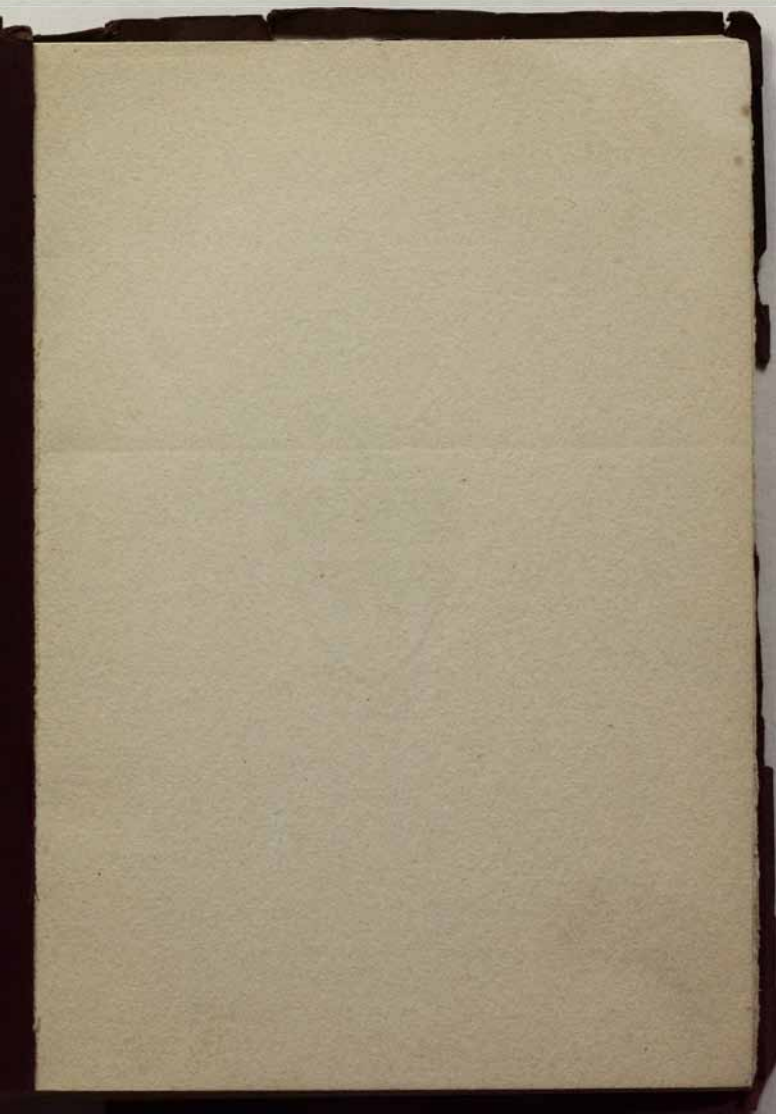


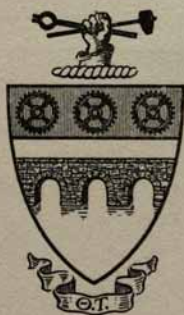
THE GEAR
OF THETA TAU



1912







THE GEAR OF THETA TAU

A CHRONICLE OF
THE FRATERNITY

PUBLISHED ANNUALLY UNDER THE DIRECTION OF
BETA CHAPTER
MICHIGAN COLLEGE OF MINES
HOUGHTON, MICHIGAN

GEO. BANTA PUBLISHING COMPANY
MENASHA, WISCONSIN

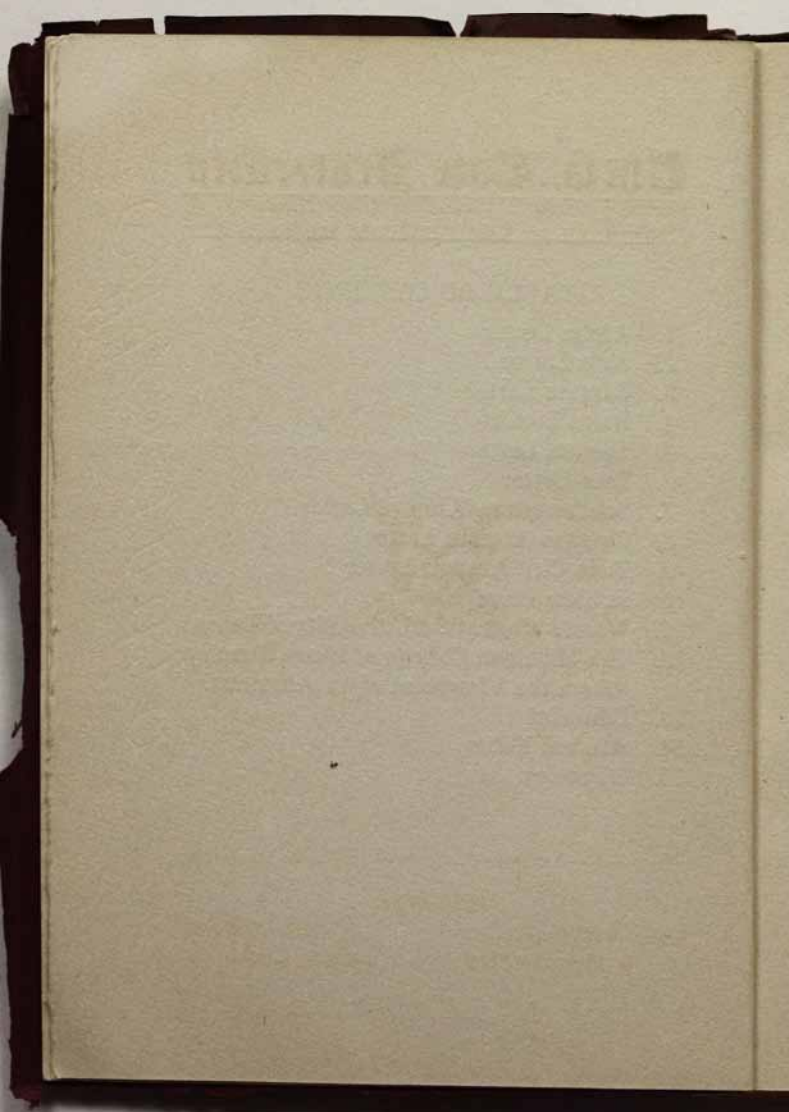
THE GEAR OF THETA TAU

VOLUME IV

1912

TABLE OF CONTENTS

1. Alpha Letter
2. Beta Letter
3. Gamma Letter
4. Delta Letter
5. Epsilon Letter
6. Zeta Letter
7. Southwestern Alumni Letter
8. Chicago Alumni Letter
9. Twin City Alumni Letter
10. In Memoriam
11. What's What at the University of Kansas
12. The Michigan College of Mines Reunion
from the Viewpoint of an Alumnus.
13. Editorial
14. Alumni Notes
15. Directory



Theta Tau Fraternity

: FOUNDED AT UNIVERSITY OF MINNESOTA :



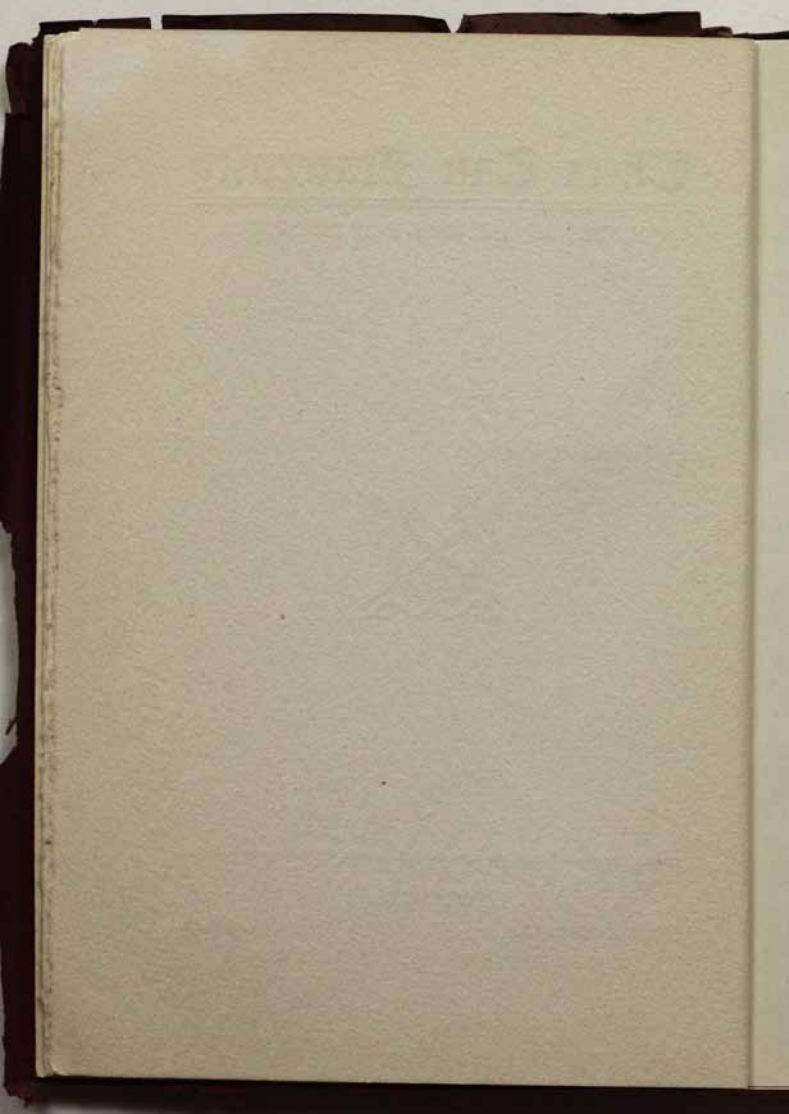
FOUNDERS:

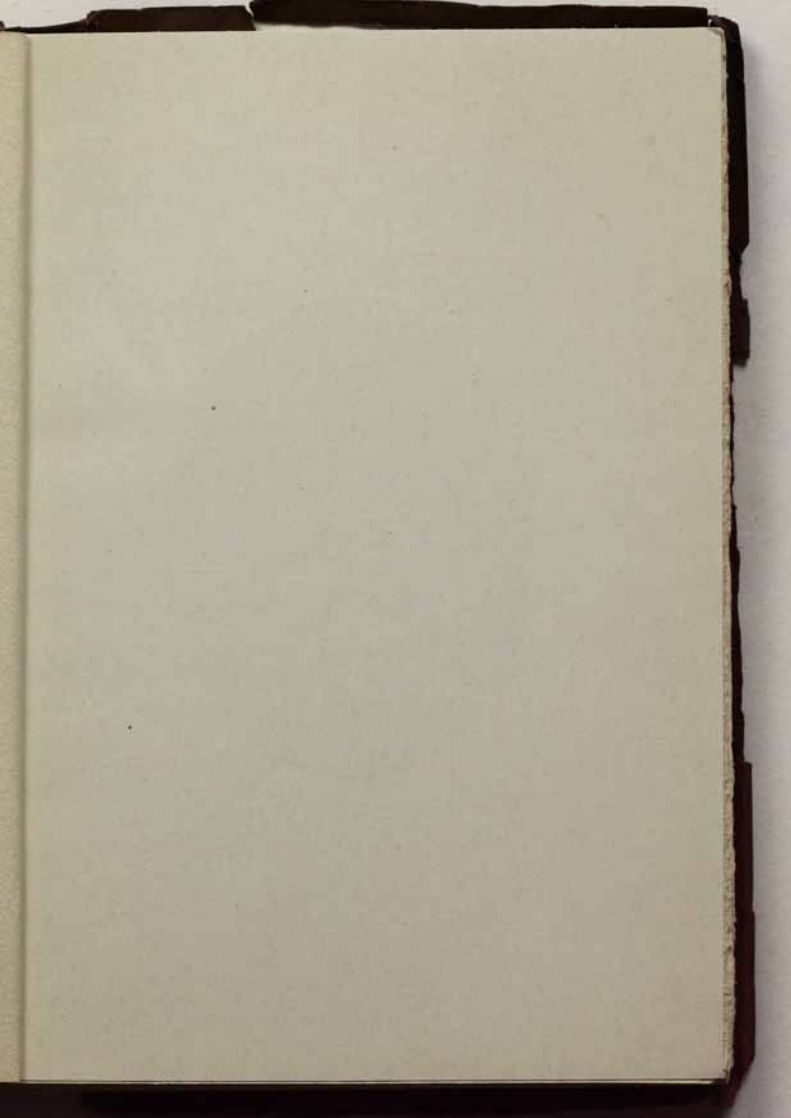
ERICK J. SCHRADER

EDWIN L. VINAL

W. MURRAY LEWIS

ISAAC B. HANKS







ERICH J. SCHRADER
Grand Regent of Theta Tau

GRAND OFFICERS OF THETA TAU

GRAND REGENT, ERICH J. SCHRADER

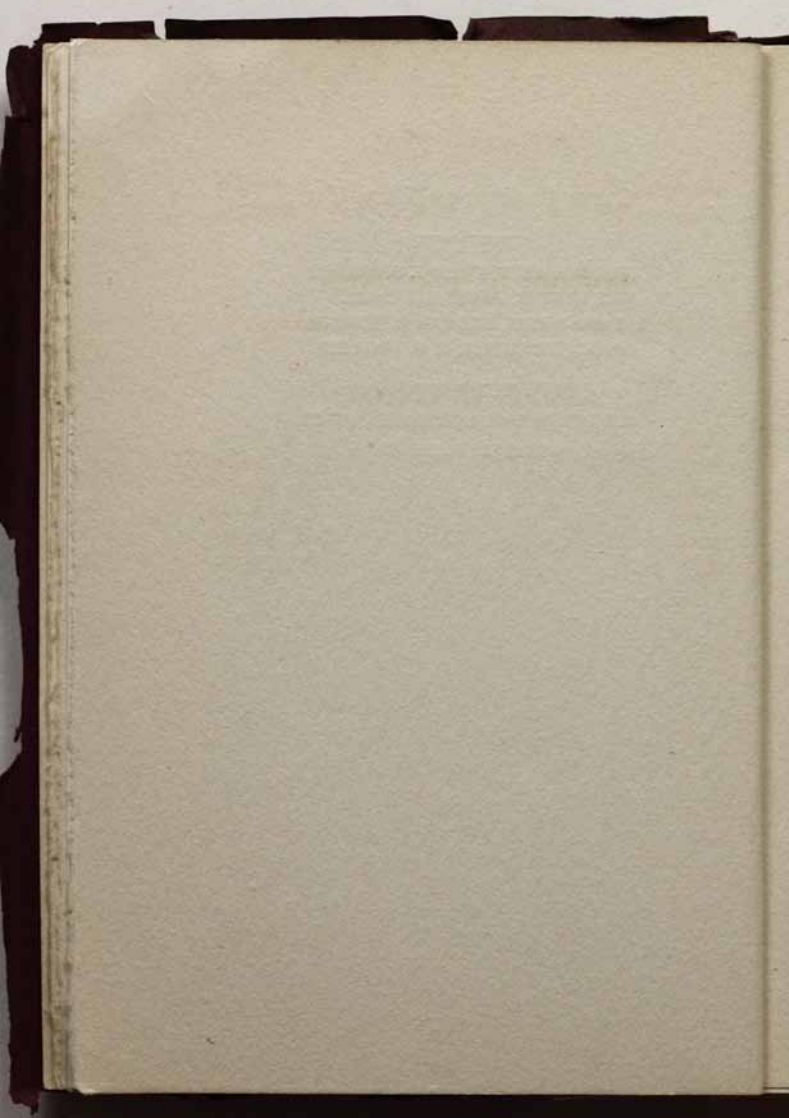
VICE REGENT, JAMES B. LOWELL

GRAND SCRIBE, HERMAN H. HOPKINS

GRAND TREASURER, B. B. WALLING

MEMBER OF THE EXECUTIVE COUNCIL

CHARLES H. KUMKE



EDITORIAL STAFF

Managing Editor	-	-	-	-	T. J. Welcker
Assistant Editor	-	-	-	-	R. R. Van Valkenburg

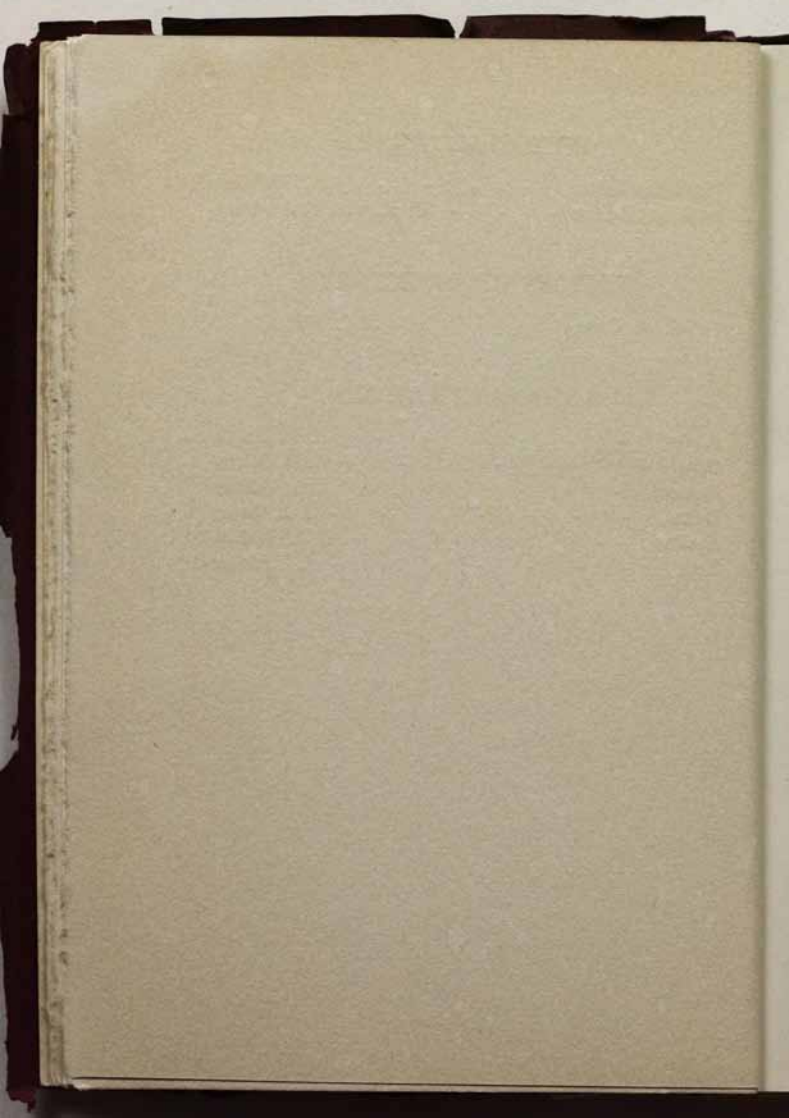
EDITORS OF DIRECTORY

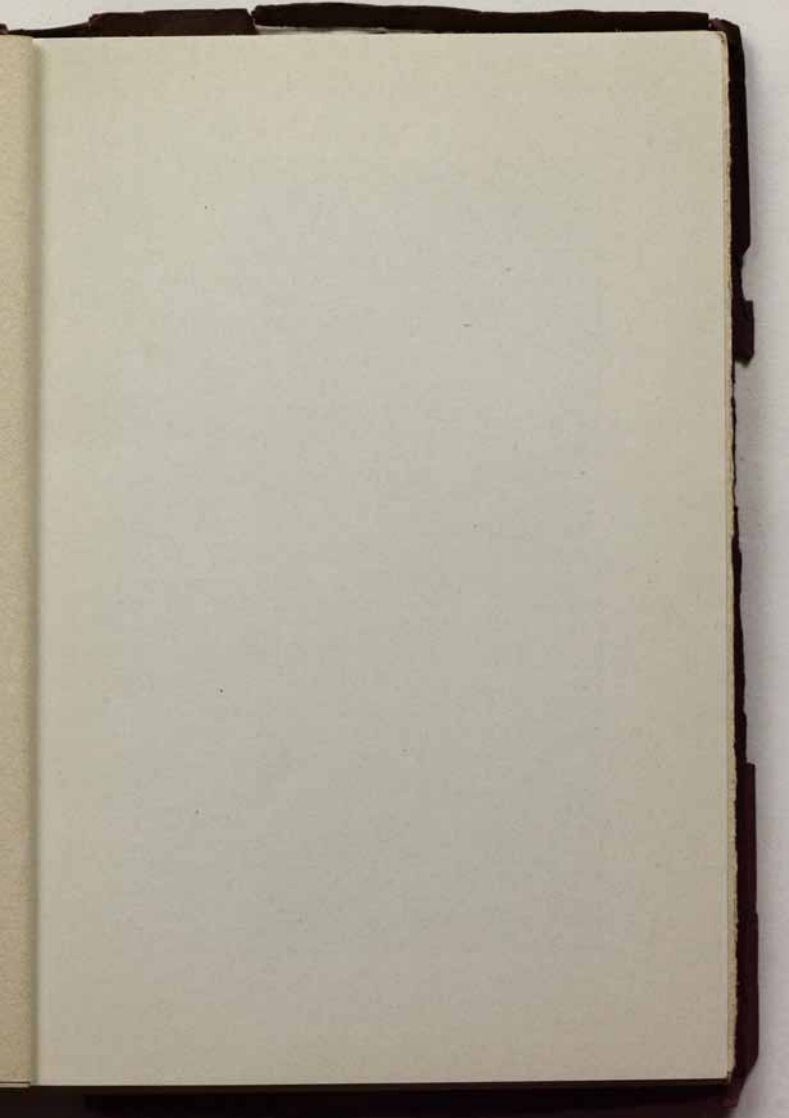
R. A. Case

J. C. Metcalf

ASSOCIATE EDITORS

Alpha	-	-	-	-	-	-	T. H. Curtis
Beta	-	-	-	-	-	-	W. A. Rigby
Gamma	-	-	-	-	-	-	Geo. Wilfley
Delta	-	-	-	-	-	-	C. A. Bever
Epsilon	-	-	-	-	-	-	G. A. Buddle
Zeta	-	-	-	-	-	-	R. I. Parker







ALPHA CHAPTER—1911-1912

Curtis, B. J.	Chapman	Ringsted	Rockwood	Matchett	Hartman	Vorck	O'Brien
Dewett	Wentz	Quinlan	Baird	Goetzenberger	Perry	Olson	
Ladd	Curtis, T. H.	Quinn	Prouty	Lewis			

ALPHA CHAPTER UNIVERSITY OF MINNESOTA

Dear Brothers:—

Another year has rolled around and once more we send our greetings and best wishes to our Theta Tau brothers wherever they may be.

Compared with last year this might be called an uneventful one perhaps, for the affairs of the Chapter have been running quietly and smoothly. Yet the past two semesters have indeed been successful ones for Alpha. Successful in rushing, we have copped out the best material in the Sophomore Class as well as the Junior Classes of the Engineering College and in the School of Mines.

The first meeting of the year was held on September 28, in the Theta Tau rooms. With only nine old men to start the year on we realized that we must get some new men at once. Consequently during the first semester our efforts were directed for the most part along the lines of rushing.

The first rushing party was held at the Psi Upsilon House in the early part of October, resulting in the pledging of Howard Quinlan, Henry Matchett, Ralph Goetzenberger, Lyman Baird, Maurice Hewitt and Charles O'Brien, and on October 26th they were initiated into the mysteries of Theta Tau. Chas. Vorck, who was pledged last spring, was also initiated at this time.

At the Sigma Alpha Epsilon House on Nov. 9th another rushing party was held and in a few days Leon Hartman, Walter Wentz, Wendell Chapman, Ben Curtis and Lawrence Dopp were wearing the pledge button. Following another rushing party, held at the Chi Psi House on Dec. 7th, Howard Eidemiller, G. Ringsred, Fletcher Rockwood and Ripley Dorr were pledged.

The above pledges have all been initiated with the exception of Mr. Dopp, a freshman miner, who in accordance with our past policy will not be put through until next fall. It has never been our policy to pledge freshmen excepting in the Mining School where competition is somewhat stronger than in the other Colleges.

On Feb. 23 a rushing party was held at the Delta Tau Delta House. At this meeting we were pleased to have with us, Prof. O. S. Zellner of the Civil Engineering department. Our newest pledges are Harvard Rockwell, Walter Collier, Kenneth Urquhart and Elting Houghtaling. Collier and Urquhart are Freshmen in the College of Mines and will be initiated next fall.

On Monday evening, Feb. 8, Alpha gave an informal dance for Theta Tau actives and alumni. Several of the Minneapolis alumni were present and the classiest bunch of co-eds on the campus. Believe me, we had some time.

For a long time Alpha has felt the need of some kind of permanent headquarters. We have been unable to run a house since we have so few members who would be able to live in one. However, when school opened this fall we rented a suite of rooms convenient to the campus in which Bros. Olson and O'Brien are now living. Through the help of our Alumni enough money was raised to furnish the rooms very comfortably. Although our rooms cannot take the place of a chapter house, yet they provide a place in which to hold meetings and a permanent place in which to keep all property belonging to the Chapter.

The Minneapolis Alumni Association invited the members of the active Chapter to attend two of its recent meetings held in the chapter rooms. Stock in our Alumni Association has been rapidly going up and we will say right here that they are going to do things. At each meeting, papers were read by different alumni on various

Engineering subjects, and they were, to say the least, very interesting and instructive.

Alpha has been thinking over plans for starting a House Fund and expects to have one started before the end of this school year. The plan adopted will probably be to ask each initiate to sign a set of notes payable in yearly installments after graduation. Each member of the active Chapter would of course sign a set of these notes and the Alumni would also be given an opportunity to do their share.

Brother Ripley Dorr was suddenly seized with an inspiration one night, while safely tucked away in his trundle bed, with the result that in a short time he had written the words and music of "To Theta Tau" which the Chapter boys like very much and they are confident that it will make a very valuable fraternity song.

Grand Regent Schrader has been with us during the greater part of the school year and, as in the past, we look to him for advice and assistance in a great many ways and are spurred on to greater things by his loyalty to Theta Tau and his constant efforts in her behalf.

In student activities, Theta Tau men are still prominent and refuse to take a back seat for anyone.

"Ted" Kopper is Engineering Representative on the Athletic Board of Control and President of the Junior Mechanicals and Electricals. Joe Perry is a member of the Board of Governors of the Minnesota Union, the main purpose of which, at present, is the procuring of a University Men's Building.

Roswell Prouty is a member of Mitre, and Grey Friars and the Board of Governors of the Minnesota Union.

"Pink" Wasson was elected toastmaster for the annual banquet of the School of Mines recently held at the West Hotel.

Bros. Ralph Goetzenberger, Henry Matchett and Lyman Baird are all serving on the 1912 *Gopher* board which has charge of the publication of the annual year book of the Junior Class of all Colleges.

Maurice Hewitt has been nominated for the board of Governors of the Minnesota Union.

Bro. Quinlan was recently elected on the New Student's Council over a man put up by the Sigma Rhos. The Student's Council represents the student body in it's relations with the faculty.

Ben Curtis is on the *Gopher* staff and is President of the Junior Civils.

Alpha was pleased to learn that the Kansas petition has been accepted by all of our chapters and extends to them her heartiest congratulations and best wishes. From the best we can learn they are a splendid bunch of fellows and will surely bring credit upon the Fraternity.

To the Active and Alumni Chapters we send our love and congratulations for the work they are doing for Theta Tau.

Faternally,

ALPHA.

CHAPTER ROLL

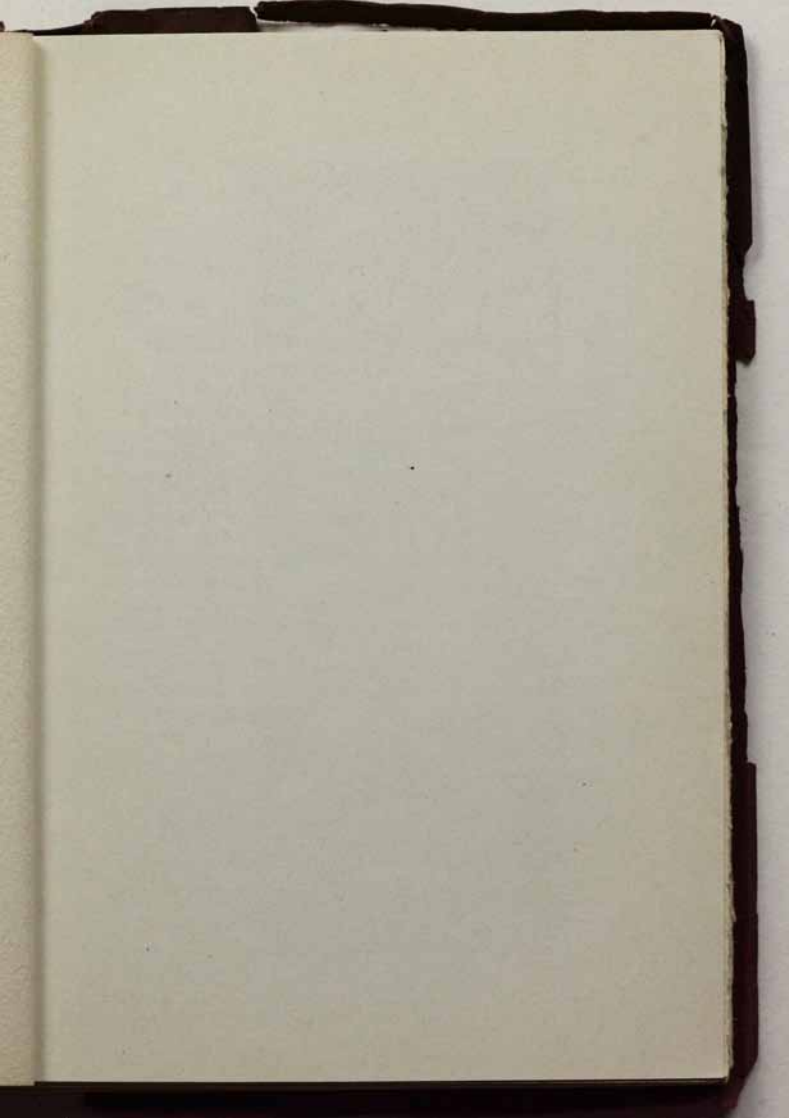
No. of Members	101
Honorary	2
Active	27

Address all correspondence to Chas. R. Vorck 239 St.
Alban's St., St. Paul, Minn.

58—Joe B. Perry	1912
64—Thos. H. Curtis	1912
75—H. J. Wasson	1913
76—Roswell W. Prouty	1912
77—John W. Lewis	1912
79—M. F. Quinn	1912
80—Rufus H. Milne	1914
83—Walter Olson	1912
85—Edward Kopper, Jr.	1913
86—Greeley Ladd	1913
87—J. Chas. O'Brien	1912
88—Ralph L. Goetzenberger	1914
89—Henry Matchett	1914
90—Chas. R. Vorck	1914
91—Lyman S. Baird	1913
92—Maurice W. Hewitt	1914
93—Howard Quinlan	1913
94—Wendell Phillips Chapman	1914
95—Walter W. Wentz	1914
96—Leon R. Hartman	1914
97—Ripley Dorr	1915
98—G. J. Ringsred	1914
99—Fletcher Rockwood	1915
100—Ben J. Curtis	1914
101—Howard N. Eidemiller	1914

PLEDGES

Lawrence Dopp	1915
Walter Coller	1915
Kenneth Urquhart	1915
Elting Houghtaling	1915
Harvard Rockwood	1915





BETA CHAPTER

Rigby, Hicks, Elliott, Metcalf, G. Edwards, Case, Schreiber, Hoak, Huckleby, Hood, Edwards, David
 Fields, Chaffin, Burt, Van Valkenburgh, Perkins, Wiggins, Welcker, Gilchrist, Carlson
 Shick, Wortley, Harris, Newkirk, Schlotter, Schaber

THE BETA LETTER

MICHIGAN COLLEGE OF MINES

Dear Brothers:—

We wish to preface this account of Beta's history for the past year by assuring all H & T men everywhere of Beta's best wishes. While our efforts and the efforts of any chapter must seem to be almost wholly self-centered, yet, whatever we may accomplish for Beta's welfare must help the fraternity as a whole indirectly, and all the time we are putting forth these efforts we have the interests of all the chapters and all the brothers deeply at heart and are wishing them well.

Since our last letter in the GEAR, Beta's life has been mostly a work-a-day one. The Reunion in August, which is described elsewhere, was one big extraordinary week—the exception to the general rule. We had looked forward to that week for a long time and when it came we enjoyed it to the full. We were sorry not to have a lot more of our alumni back though we do not see how we could have lived through the week if they had been here.

The fall term opened with Beta's chapter roll numbering sixteen. Among these we were glad to count "May" Fields, an affiliate from Alpha. Brothers Edwards and Hicks, who had been taken in during the Reunion, were of the number also. It may be added that during the same famous week we initiated Dr. Koenig as an honorary member. The sixteen active men set to work at once to look over the promising material for Theta Tau. As a result of the fall campaign we are glad to count as brothers the following men: W. J. Harris, Saginaw, Michigan; C. E. Chaffin, Salt Lake City, Utah; R. R. Wiggins, Indiana, Pennsylvania; W.

O. Scott, Detroit, Michigan; Joe David, Muskegon, Michigan; P. E. Hinckley, Kalamazoo, Michigan; H. R. Edwards, Houghton, Michigan; H. B. Shick, La-Porte, Indiana; G. F. Schreiber, Saginaw, Michigan; and A. E. Carlson, Ashland, Wisconsin. Those of us that are putting in our last year of active membership feel that these men will more than fill our places.

The interclass activities at the beginning of the fall ended in about an even break. Many of each class had their hair clipped. The Sophomores won the rush and the foot-ball game while the Freshmen won the basket-ball game. Theta Tau men were prominent in both foot-ball and basket-ball games. Brothers Welcker and Van Valkenburgh coached the two foot-ball teams. Brother Rigby had charge of the first smoker of the year in connection with which the basket-ball game was played. The election of officers for the Students' Organization was very unusual in that there was no contest for the office of President. Jay Swent, an independent, was elected unanimously. Brother Van Valkenburgh was elected first vice-president and as such will have charge of all the student activities at the beginning of the next college year. The President's committee appointments gave us a place on every committee and the chairmanship of one.

For the chapter the chief event of the fall was the banquet which was held at the Douglas House on November 11th. We were very glad to have Brothers Luce and Ballard with us to represent the alumni. It was also a great treat to have Dr. Koenig with us and listen to some reminiscences of his student life in Germany. The other speakers were Brothers Scott, Rigby, Welcker and Fields. Brother Van Valkenburgh presided with the grace and dignity which we have come to expect from him. After the regular toasts we listened to some extempore efforts by some of the newly

initiated men. Brother Chaffin's remarks on the fourth dimension and Brother David's of Murph presiding at the Reunion were very amusing.

Since the holidays work has been the principle thing on the docket. There have been some few affairs at the Gym. Brother Newkirk has served his third year as captain of the basket-ball team. Brother Perkins played a good game at centre throughout the season. The team won the majority of their games. After Christmas Brother "Spike" Schaber was also with the team. But Spike's biggest work has of course been on the show. He is running the thing this year just as he did last and we feel sure that the show will be better than the one given last year. The name of the show this year is "The Red Streak." Book, lyrics and music are all by students of the M. C. M. Brothers Schaber and Harris have the principle girls' parts and Brothers Fields and Shick are the leading men. More than half of the whole company are H & T men. And Spike wrote most of the book and a number of lyrics and is responsible for the airs of a number of the songs. The show will be given at different cities of the Upper Peninsula during the week of spring vacation which begins April 29th.

We are sorry that a couple of our brothers have been forced to leave school this year on account of poor health. Brother Walter Scott had to leave before the end of the fall term. He is now taking on weight at Fort Staunton, New Mexico. Brother L. R. Hicks went to New York during the holidays to take treatment at a hospital there and has been unable to be in school since. He came back in February but was worse and had to leave again. By the time the GEAR is out all our alumni will have heard of the death of Brother "Bud" Hicks. The news has saddened us all. Those of us who knew him only by reputation had learned to love him.

In their studies the fellows have been doing work a little better than the average this year. At the beginning of the year a tutorial committee was appointed to collect the dope and see that anyone needing it received the proper help. As a matter of interest an effort was made to record the monthly marks of the fellows. The record is not complete but ought to make an interesting curve if the results are ever plotted. During the year Brothers Welcker and Gilchrist have been elected to Tau Beta Pi so that we have four of the supposedly brilliant in our midst which is about our usual number.

At the time of writing this we are looking forward to our Spring banquet which is to be held April 13th. It will probably be the usual great success. We hope that it will not interfere too seriously with the show rehearsal the next afternoon. Before the banquet we will initiate Harold Mills of Houghton and Clifford Hoag of St. Johns, Michigan. After that there will be but two weeks before the spring vacation. Some of the Seniors are through at that time. Many of the fellows will go on the Iron Country trip and we will be more or less broken up as a chapter until fall comes and another year starts.

Among our plans for next year we are expecting to entertain the Second Biennial Convention of Theta Tau during the holiday vacation. We hope to prove ourselves as good hosts as did our brothers of Alapha in February, 1911. We have some plans in mind for that time already and would be glad to receive suggestions from any of our alumni.

In closing we wish all the present members of Theta Tau and those that may be initiated before another GEAR is issued the best of everything that is best. May the present chapters and those that may be installed within the coming year, experience no reverses but continue in a steady and sturdy growth.

BETA.

No. of Members	114
Honorary	1
Active	26
Affiliate	1

Address all correspondence to Beta Chapter of
Theta Tau, 233 College Avenue, Houghton, Michigan.

CHAPTER ROLL

59—T. J. Welcker	1912
69—D. L. Newkirk	1912
75—R. R. Van Valkenburgh	1912
77—W. A. Rigby	1912
78—R. B. Wortley	1912
79—C. F. Schaber	1912
85—R. A. Case	1912
88—K. K. Hood	1912
92—G. D. Elliott	1912
95—J. C. Perkins	1913
96—L. C. Schlotter	1913
97—C. F. Burt	1912
98—A. Gilchrist	1912
99—J. C. Metcalf	1913
100—J. G. Edwards	1913
Alpha—H. H. Fields	1912
104—C. E. Chaffin	1914
105—R. R. Wiggins	1914
106—H. B. Shick	1914
107—J. David	1913
108—W. J. Harris	1913
109—P. E. Hinckley	1914
110—H. R. Edwards	1913
111—G. F. Schreiber	1914
112—A. E. Carlson	1914
113—C. Hoag	1913
114—H. F. Mills	1914

GAMMA CHAPTER COLORADO SCHOOL OF MINES

Dear Brothers:—

The college year of 1911-12 opened with most favorable prospects for Gamma Chapter and has continued through the fall to be the most pleasant.

Nine men from our last year's chapter returned to school this year. Frank Bicknel, who is with the Stanley Chemical Co. and Stanley Walker left school to enter the business field. The men who graduated are:—William Douglas, who is with the "Homestake Mine," John V. Harvey, of the "Peregina Mine," James K. Lannon, of the "Midas Gold Mining Co.," Philip Dorr McHugh, of the "Dorr Machinery Co.," E. J. Dittus, of the "School of Mines" Faculty, Jim Dunn, Herris, Marshal and Garnett.

Our fall initiation was held in Woodburn Hall where the following new men were initiated: E. R. Crutcher, W. C. Hudson, B. N. Kilbourn, E. Nolan, J. B. Bisland, A. Flinn, H. H. Forbes, R. E. Litchfield and Geo. Wilfley.

The most notable event that has happened during the last few months concerning Gamma Chapter, was the annual banquet held at the Lafayette Cafe, Denver, on the evening of Feb. 12, 1912. This function being our annual affair, is always looked forward to by all alumni and active men.

The Juniors are at present planning a banquet to be given the Seniors, before they go on the Senior trip.

So far this year we have not had time to have discussions at our meetings on scientific subjects but will do so as soon as possible. The fraternity house question seems to be where it was last year, that is we do not deem



GAMMA CHAPTER

C. E. Calvert	E. R. Ramsey	George Wilkey	J. E. Dick	W. C. Hudson	F. E. Nolan
L. C. Thomas	B. N. Kilbourn	Alan Kinsock	Alfred Flinn	W. O. P. Hildgate	A. J. May
R. E. Litchfield	Donald Drydenforth	H. H. Forbes	C. R. Hill	E. R. Crutcher	J. B. Bristol



it advisable to have one as practically all of our men already live in fraternity houses.

We have been fortunate in our scholarship record. The Tau Beta Pi men are Hilsdale, Hill, and Ramsey.

The foot-ball and basket-ball seasons have just closed with the basket-ball championship record to our credit. Our 'M' men are:—Calvert, Kissock, Thomas, Dyrenforth and Litchfield.

For the first time in the history of the school, the Junior class has taken it upon itself to put on an annual. Elaborate preparations are being made to make it a success.

In closing, Gamma Chapter extends her best wishes to Theta Tau.

GAMMA.

Address all correspondence to Alfred Flinn, Kappa Sigma House, Golden, Colo.

DELTA CHAPTER

CASE SCHOOL OF APPLIED SCIENCE

Dear Brothers:—

Altho represented in the GEAR last year, our existence as Delta Chapter of Theta Tau, had been so brief that it is with a much greater enthusiasm that we welcome this opportunity to extend to our sister chapters our sincerest fraternal greetings.

Sigma Kappa Alpha had hardly been installed as "Delta" when graduation and practice term scattered the fellows to various parts of the country. The seniors all entered the ranks of the Alumni and were forced to "paddle their own canoe." The Juniors took a flying trip through Colorado and Utah, inspecting mines, mills and smelters. The Sophomores as usual spent the month of June surveying a coal mine near Greensburg, Pennsylvania.

The change from Sigma Kappa Alpha to Theta Tau so shortly before the termination of the last semester caused all fraternity business to be in a chaotic state and it devolved upon Regent Arms to adjust these matters to the new order of things. Brother Arms responded to the duty nobly and under his able guidance the chapter was in smooth running order before many days had passed. Brother Kohler was in Cleveland early in September and his suggestions were invaluable in getting the chapter started.

The Alumni of Sigma Kappa Alpha were elected to Theta Tau and the following men have been initiated: Brothers Severin, Kline, Alderson, Hasse, Kohler, Trappman. The remainder of the Alumni will be initiated as soon as arrangements can be made to do so.

Our active membership has only been increased by three, Brothers, Anderson, Collier and Scott. The selec-



DELTA CHAPTER

Mac Innes

Anderson,

Applegate,

Hansen,

Bever,

Henton,

Scott

Collier

Schramm,

Strong,

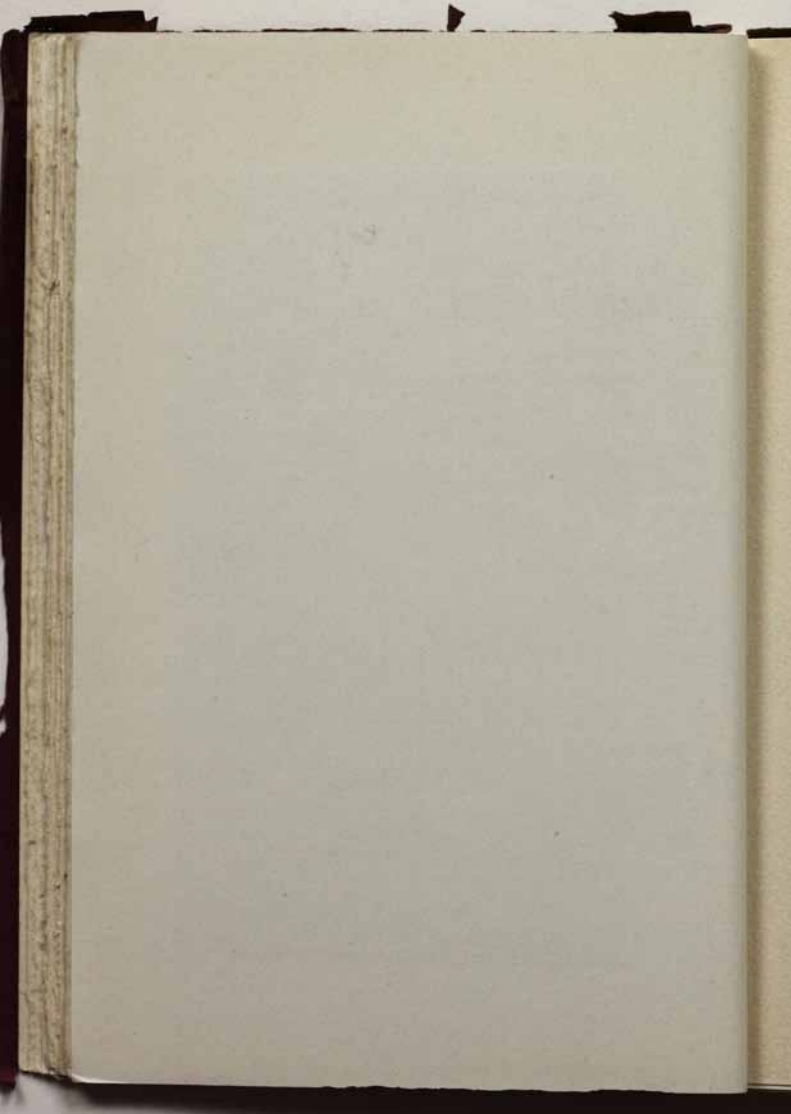
Riddle,

Malm

Caine,

Buddle,

Arms



tion of new members belongs properly in the second term, and a number of men are now under consideration from which we expect to obtain five or six men worthy of admission into Theta Tau.

The dream of our own chapter house has come to every brother and lengthy discussions in regard to this have taken place from time to time. A savings bank account has now been started and it is hoped that this will be the nucleus of a fund which will eventually make our own chapter house a reality.

On December 21, the brothers met at Finley's to enjoy the usual fall banquet. The committee had arranged such a liberal repast that everyone was in the best of humor when Regent Arms arose and spoke a few words of cheer. Brothers Strong, Malm, Riddle, Alderson, Severin and Haeberle responded to toasts. The Alumni present were Brothers Alderson, Severin, Hasse, Haeberle, Vickery, McLaughlin and Hartley.

The meetings throughout the past year have been held every Tuesday evening at the fraternity house. A lunch is always enjoyed after the business session, and this is followed by a general good time. Altho no meals are served at the house, several of the fellows carry lunches and each noon hour the house resembles a real live picnic ground. Our gatherings have been well attended by the Alumni in the city. Brothers Severin, McLaughlin and Vickery having been particularly faithful in this respect.

We were very proud to have Brother Caine elected captain of the basketball team. Brother Arms also made the team, and Brother Strong was kept from the team only by a somewhat serious accident. Brother Caine should have no trouble making the baseball team, and Brother Strong will again represent Case on the track team. Brother Bever is one of the mainstays of the band, and Brother Scott plays in the orchestra. Brother

Malm is on the glee club for the fourth year. Brother Strong and Brother Riddle were elected to Tau Beta Pi.

Both locally and nationally, our fraternal spirit has been ever increasing, and we sincerely hope that the coming year will be the most prosperous one that Theta Tau has ever experienced.

In closing, we wish to assure any of the brothers who may be in the vicinity of Cleveland, that a visit from them will be heartily welcomed.

DELTA.

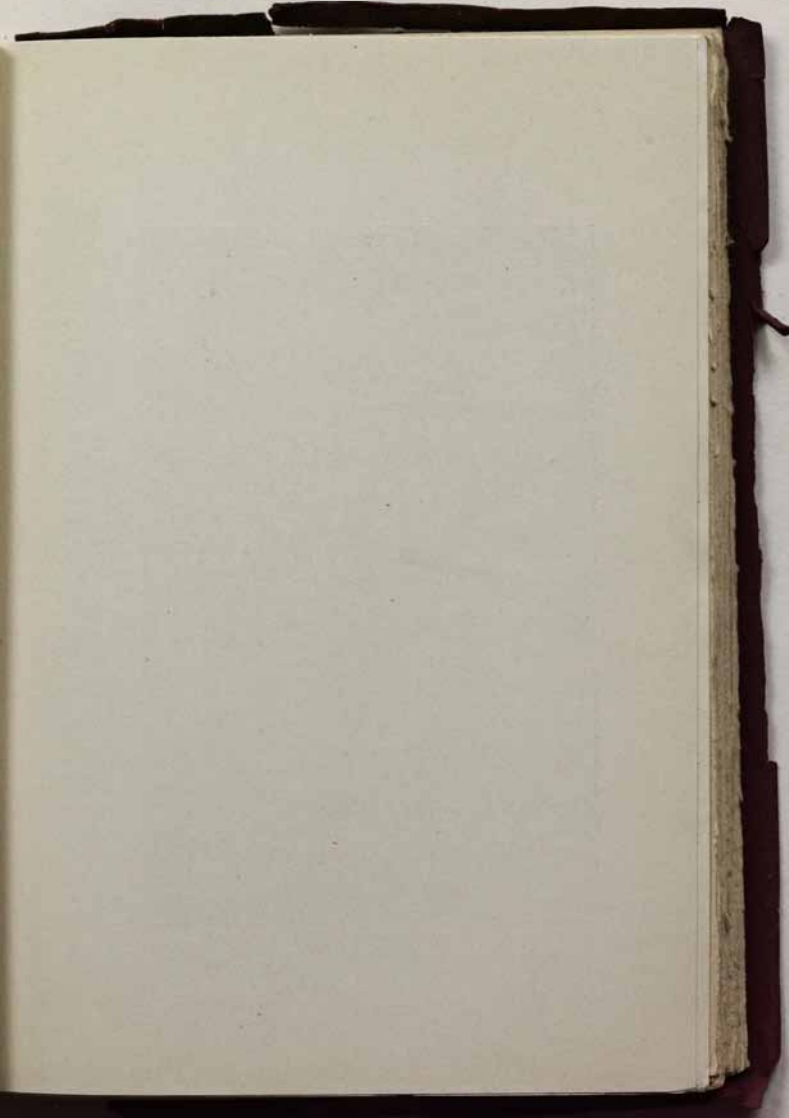
Number of Members.

Active	15
Honorary	0

Address all correspondence to C. A. Bever, 1796 West Fifty-seventh Street, Cleveland, Ohio.

CHAPTER ROLL.

15—Charles Seeley Arms	1912
16—Otto Carl Budde	1912
17—Royal Dinsmore Malm	1912
20—Frederick Earl Caine	1912
21—Lynn Barnes Riddle	1912
23—M. Roy Strong	1912
24—George Peter Hansen	1913
25—Clarence Alfred Bever	1913
26—Robert Perry Heston	1914
28—Otto Ferdinand Schramm	1912
29—George Raymond MacInnes	1913
30—John Sam Applegate	1914
31—Lloyd A. Collier	1914
32—John Clinton Scott	1914
33—Robert John Anderson	1914





EPSILON CHAPTER

J. R. Suman, S. H. Gester, A. Eaton, F. G. Tickell, J. P. Bowallda, R. B. High, C. A. Allen
 G. B. Moody, S. B. Davis, G. A. Buddle, F. S. Hudson, F. L. Wilson, R. Countryman,
 P. W. Thompson, A. W. Lawson, W. P. Stanton.

EPSILON CHAPTER.

UNIVERSITY OF CALIFORNIA.

Dear Brothers:

It is with a great deal of pleasure that we of Epsilon take this opportunity of extending greetings to our sister chapters and wishing them every success in the coming year.

The year that has passed since the last issue of the GEAR has been a busy one with us.

We started the year with twelve active members and immediately set to work to look up amongst the Juniors suitable men for Theta Tau; the result being that we pledged 7.

The initiation was held Nov. 29, at the Phi Kappa Psi House. The following men being initiated:

G. C. Gester	'08
E. F. Davis	'09
F. L. Wilson	'11
C. A. Allen	'12
A. W. Lawson	'12
J. P. Buwalda	'12
A. Eaton	'13

During the fall term we carried out our plan of holding fortnightly meetings, which after the routine business of the chapter had been disposed of were given over to the reading of technical papers, followed by an informal discussion on the subject under consideration. We find that the fellows take a very keen interest in these meetings, and for that reason we intend to make them a regular thing.

As to the doings of the men this year, I may mention that Brothers Suman, Thompson, Davis and Bud-

dle of the class of 1912 and Brother Eaton '13 made Tau Beta Pi. Brother Davis was president last semester. For original thesis work, Brothers Davis, Hudson, Buddle, Thompson and Moody were admitted to Sigma Xi society. Brother Lund was president of the Mining Association last semester; this semester the honor fell to Brother Wilson, who is proving a live wire in the position.

With regard to athletics, Chet Allen is captain of the baseball nine; he has also played four years on the varsity foot-ball team. Arthur Eaton is a rowing man and is in line for the varsity crew this year.

Election of officers was held at the last meeting of the fall semester. The new officers are:

Regent	F. S. Hudson
Vice Regent	J. R. Suman
Secretary	G. A. Buddle
Treasurer	F. L. Wilson

At the first meeting of the fall semester, G. A. Buddle, who left for his home in New Zealand shortly before the chapter was installed, was initiated.

To afford a break in the strains due to examinations, we decided to hold a banquet in Oakland; it was voted a grand success by all hands and it was decided to make it a regular custom. We are now planning a banquet for the near future.

Epsilon chapter extends to its sister chapters and Alumni heartiest wishes for a prosperous year.

EPSILON.

Number of Members, 32.

Active	19
Honorary	0

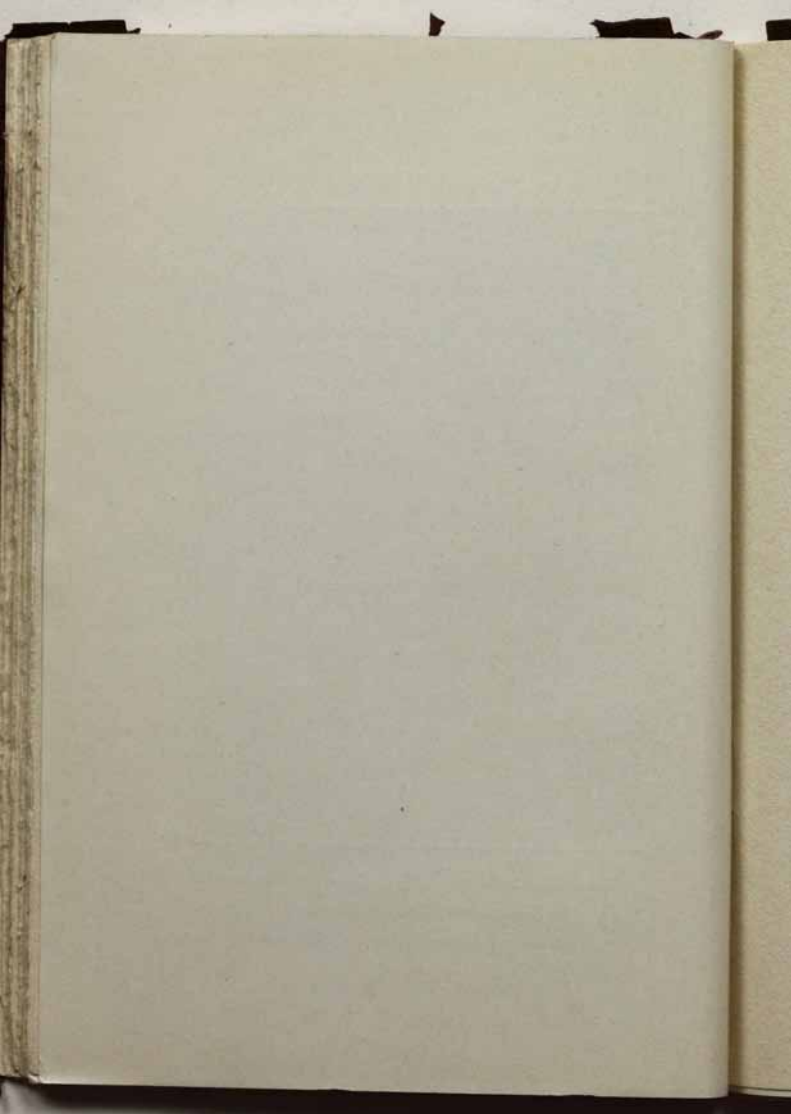
Address all correspondence to Prof. G. D. Loudereback, Bacon Hall, University of California, Berkeley, Cal.



Ralph Countryman

Frank S. Hudson

Founders of Epsilon Chapter



CHAPTER ROLL.

1—Ralph Countryman	'11
2—Frank S. Hudson	'11
7—Geo. D. Louderback	
10—Ralph B. High	'11
17—Wolcott Stanton	'12
18—Percy W. Thompson	'12
19—Stephen H. Gester	'12
20—Sherwin B. Davis	'12
21—John R. Suman	'12
23—Fred G. Tickell	'12
24—Graham B. Moody	'12
25—Geoffry A. Buddle	'12
26—Geo. C. Gester (Graduate)	
27—Elmer F. Davis (Graduate)	
28—Andrew W. Lawson	'12
29—Arthur Eaton	'13
30—John P. Buwalda	'12
31—Frank L. Wilson	'12
32—Chester A. Allen	'12

ZETA CHAPTER UNIVERSITY OF KANSAS

Dear Brothers:—

Zeta chapter sends her first annual greetings to her sister chapters and Alumni.

For some time the need of a closer bond among the engineers at Kansas has been felt. The only organizations, with the exception of the honorary societies, were the student branches of the national engineering societies. These, however, failed to bring the fellows together. Some of us knew of Theta Tau, and knew that Theta Tau would MORE than fulfil this need.

On Thursday evening, October 27, 1911, the charter members of Zeta chapter met and organized the society of Tunnel and Shaft. Our idea, from the first, was to petition Theta Tau, and all of our meetings were to that end. In December, we enjoyed visits from Brother Schrader and Brother Kumke, who gave us a great deal of valuable advice.

On March 26, 1912, we received official notice from Brother Hopkins that our petition had been granted. The installation by Brother Schrader, Brother Walling and Brother Hopkins, took place April 17, 1912. Four pledges were initiated the following evening.

Our plans for next year include a house, though as yet, nothing definite has been accomplished. It is our plan to rent furnished, the two upper floors of a good house until our finances are in such shape as to warrant the rental of an entire house. Eventually, we hope to own a house.

In closing, we wish to say that Zeta will be mighty glad to see any brother who may be able to come to Lawrence, and we hope that many will do so. We are planning on sending a large delegation to the convention next January.

ZETA.



ZETA CHAPTER

Wilson

Van Houten

Mandelsoff

Johnson

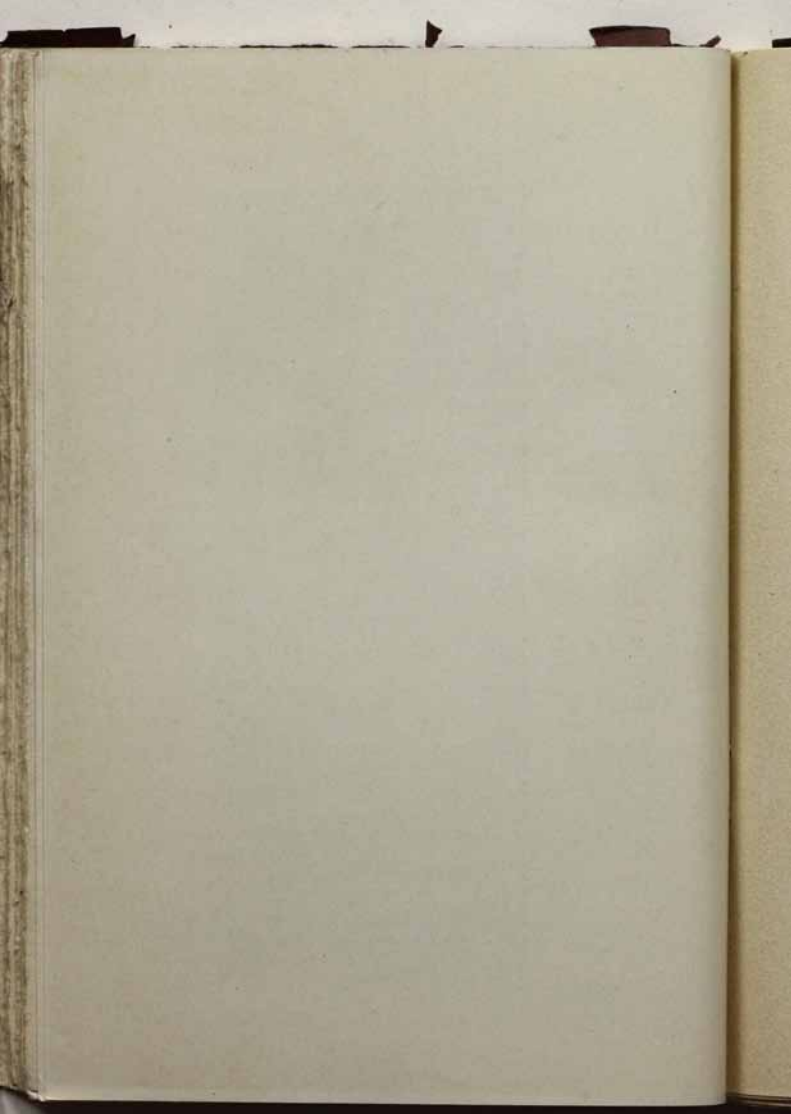
Andrews

Proff. Rice

Ward

Parker

Coats



SOUTHWESTERN ALUMNI ASSOCIATION
OF
THETA TAU

Dear Brothers:—

Once more the time approaches when we must again get into touch with all of the members of our fraternity by aid of the GEAR.

Through some negligence on our part we failed to get our annual letter into the 1911 issue but we will try to cover everything that was done by us during the past two years.

The annual reunion in 1910 was held at Globe, Arizona, on December 25th and 26th. As usual we had a fine time. We had a banquet and several business meetings. Owing to the slump in the copper market Globe was very quiet during the year and the difference to our 1909 reunion was noticeable. At that time we had eight men in Globe while in 1910 there were only four. At the business meetings we discussed the copies of the proposed Constitution and Ritual which Brother Schrader presented and at the same time we appointed him delegate to the National Convention soon to be called by Alpha chapter. We also kept the wires hot trying to find a man for a good job in Sonora and finally succeeded. The officers elected were as follows:—

Erich J. Schrader,
J. D. Wanvig, Jr.,
R. B. Earling,

Alpha '05 Pres.
Beta '08 Sec'y.
Beta '08 Treas.

After a last feed and rousing good time we adjourned to meet again during Christmas time 1911.

During the year 1911 many changes took place in the S-W. A large number of our brothers left the local-

ity. Brother Koontz moved to Los Angeles and Brother Wanvig soon followed and Brother R. B. Wagner was appointed Sec'y pro tem. The revolution in Mexico resulted in practically all of our brothers leaving that country for the time being and at the present time it does not look as if peace will soon be restored there.

During November we sent a circular letter to all of our members announcing that the annual reunion would be held at Tucson and asking for a reply at once. Unfortunately only two men were able to come and we were forced to give up the plan at the last moment.

Brother Schraeder went north in December to recover from the injury to his knee which kept him in the Nogales hospital for six weeks but now we hear that he will soon be entirely recovered. Brother Kumke returned from his honeymoon in December and on December 26th a meeting was called at Globe of all the brothers who are operating in that vicinity. Brother Kumke reported on the enjoyable stay he and Brother Schrader had at Lawrence, Kansas, and urged that the petition soon to be presented from the Tunnel & Shaft Society of the University of Kansas be accepted by the members. After a brief discussion, the members present voted favorably on this matter. Other fraternity matters were discussed at some length and all agreed that now that the national policy had finally been settled for good, there was nothing that could hinder the growth and prosperity of the fraternity. We had the usual banquet and parted with regret. We certainly hope that the mining world will be more prosperous during 1912 so that we can get a large number of men together for the next annual reunion. The following officers were elected:—

Chas. A. Kumke, Beta '06 Pres.
Address Globe, Arizona.

R. B. Wagner, Beta '10 Sec'y. and Treas.
Address Globe, Arizona.

We wish to urge and request that all members of the fraternity who are in, or come to the S-W, communicate with the officers of the Association at once. We want to keep in active touch with you. Any Theta Tau man living in the S-W is entitled to membership. This includes Mexico. We want you to let us know what openings or opportunities there are in your vicinity and we want the recent graduates or others who are looking for jobs to write to us so that we can let them know if anything turns up. However, it is the man on the ground who gets in first and if any of you come down here looking for technical work, let us know and we will help to the best of our ability.

We wish the chapters prosperity and success during the coming year. We greet our new chapters with pleasure and assure them of our interest in their future welfare.

SOUTHWESTERN ALUMNI ASSOCIATION.

THE CHICAGO ALUMNI ASSOCIATION.

Dear Brothers:—

With the advent of another issue of the GEAR and the addition of another Chapter to the Chapter Roll the Chicago Alumni Association wishes to extend a hearty welcome to the new Zeta Chapter, and the best wishes of this Association to all Chapters for a most successful year. We are pleased to see the success and progress that our Fraternity has made in the past year.

The activities of this Association have been mainly of a social character. We aim to maintain the same "bureau of information" as of old and endeavor to keep in touch with all members in this vicinity. We have had visitors from all corners of the country in the past year and look forward in anticipation of a greater pleasure on their return visits. This Association exists partly for the entertainment of the brothers who pass thru our locality and we are always glad to see all the men.

At the request of Delta Chapter, Bro. C. F. Koehler of Gary, Ind., was initiated for that Chapter at a special meeting of the Association held in Chicago, August 5th., 1911. We were fortunate to have at that meeting, Bro. E. J. Schrader who gave us our first opportunity to see the new Ritual. Bros. W. F. Carroll, Donald Dyrenforth, C. B. Cameron and H. H. Hopkins, Jr., were present and participated in the initiation.

At the regular meeting on Dec. 29th, 1911, the following officers were re-elected:

H. H. Hopkins, Jr.,	President.
164 No. Dearborn St., Chicago.	
C. B. Cameron,	Secretary.
4028 No. 44th Ave., Chicago.	
C. D. Peacock,	Treasurer.
Brainerd, Minn.	

With best wishes to all the Chapters,

CHICAGO ALUMNI ASSOCIATION.

TWIN CITY ALUMNI ASSOCIATION.

Brothers in Theta Tau:—

A great responsibility rests with the active chapters of Theta Tau, that of choosing from the throngs of students in six of the most reputable institutions of higher learning in America, those few men who give promise of becoming our greatest engineers. The remarkable careers of the present alumni members attest the fact that this responsibility has been well placed. If the same standard of quality in men is maintained by the active chapters, the Alumni will continue to reflect credit on their fraternity and their colleges.

The Twin City Alumni Association, formed February third, 1912, has grown steadily; meetings which are held monthly are well attended, and the organization will undoubtedly become a strong factor in the fraternity's activity. In addition to the regular transaction of business at meetings, two papers are read by members, three copies of which are filed with the Committee on Literature for the use of both Resident and Non-Resident members. Non-Resident membership is open to all alumni of the fraternity. The annual dues, \$1.00, entitle such members to a copy of the GEAR post paid, and in addition, access by mail to the various papers already referred to. The officers are: Benj. B. Walling, President, Julian P. Farnam, Vice-president, Geo. A. DuToit, Jr., Treasurer, Jack E. Haynes, Secretary, and Geo. W. Jevne, Recording Secretary.

The time is not far off when conventions of Theta Tau will attract nation-wide attention; proceedings will be published and supplied to all members. Though now in its infancy Theta Tau will soon find itself represented among the owners and managers of great mining and manufacturing concerns, of engineering publications, and

in the executive forces of other lines of commercial activity.

Obviously alumni organizations are of great importance. Let us keep our alumni united in Theta Tau, working together, meeting together, co-operative with the active chapters, inspiring one another to greater efforts, and so carry out the plans of the fraternity to which we all belong.

TWIN CITY ALUMNI ASSOCIATION.

Address: J. E. Hayes, Secretary, 1787 Hague Ave.,
St. Paul, Minn.

BERT REED HICKS

B. R. Hicks, Beta '09 was born in Oshkosh, Wisconsin in the year 1886.

During his boyhood and school days he was most popular with his companions to whom he endeared himself by his sterling qualities of disposition and character. He was a member of the Methodist church and was associated with the work of that church from the time he was a boy until he left Oshkosh to attend the Michigan College of Mines.

His college career was a happy culmination of his school life. Besides making a host of friends among his fellow students he ranked high in his work as is shown by the fact that he held the position of instructor in the Mechanical and Mining Departments.

Shortly before leaving school he received an offer from the Chinese Government through an agent to help found a Mining school in Wushan, province of Szechwan. He accepted and shortly after graduation left for China to take up his duties.

During his two years of constructive work he became fairly well known among the Chinese as a successful teacher in the School of Mines which has hitherto been numerously attended by the natives.

It was about the middle of March that he, accompanied by two American Missionaries started on a trip to explore the gorges of the Yangtse river, and which so unfortunately resulted in his death. According to more or less authentic reports he and his two companions were asleep in their boat when seven pirates armed with swords attacked them at three a. m. on the morning of March 25th. The intention was to kill all three but this was in some manner averted as his companions escaped slightly wounded and were able to take his body to Ichang.

Every means possible is being resorted to by his bereaved parents to have the remains shipped to Oshkosh, for burial.

In Memoriam

Bert Reed Hicks, Beta '09

WHAT'S WHAT AT THE UNIVERSITY OF KANSAS

Work in the Engineering School of the University of Kansas leads to degrees in the following branches of Engineering, Civil Engineering, Municipal and Sanitary Engineering, Electrical Engineering, Mechanical Engineering, Mining Engineering, Chemical Engineering, and a five year course in Architectural Engineering is now being added to the curriculum.

The engineering school has the following buildings at its disposal, Marvin Hall, general engineering work, Mechanical Laboratories and Power Plant, Fowler Shops, Haworth Hall, the Geology and Mining Building, Blake Hall, the Physics Building, and the Chemistry Building.

The entrance requirements of the engineering school are essentially the same as those of other high class technical schools.

This year the engineering student body consists of 78 Seniors, 69 Juniors, 119 Sophomores 150 Freshmen, and 19 Special students making a total enrollment of 435. The total registration of the entire University for the year 1910-11 was 2,398.

At present there are no fraternities in the engineering school with the exception of Sigma Xi and Alpha Chi Sigma, both of which are honorary. The Academic, Law, and Medicine branches of study have chapters from some fifteen different Greek Letter Fraternities.

It is the strong belief of those well posted on this University that the Engineering School will make rapid progress in the next few years. New shops and laboratories are now being planned, and a new Administration building to cost \$500,000 is under course of construction.

The Zeta Chapter of Theta Tau should certainly thrive on the clover.

THE MICHIGAN COLLEGE OF MINES RE- UNION FROM AN ALUMNUS' VIEWPOINT.

My Dear Frank:—

The reunion is history and bless your dear soul how I did miss you. Remember that hot August afternoon, four years ago, after we had hoisted by main strength and awkwardness five tons of the "Dukes" Concentrates up to the third deck of the mill, and after filling our pipes with "Peerless" we became reminiscent of our college life? Murmurs of a Reunion were vibrating about that time and we determined to be among those present to help celebrate.

It was one shame that your Company of Financial Pirates should send you to Peru and be the cause of your missing the most complete week that can befall the average mortal.

I suppose some of the other fellows will tell you the events, here is my angle. That M. C. M. bunch in Chicago, run by Hopkins, Williamson and Co., had been pestering me about special trains run from Chicago to Houghton and wanted me to charter a car along with C. A. Foster and a few other Wallingfords, I tried to make plain to them that my exchequer would stand just about one lower, which they reserved. The special trains dwindled to two cars and believe me it was the concentrated essence of joy in the Chicago Depot on Sunday evening when we got together. Fellows I hadn't seen since we left Houghton were there. The refreshment committee had an even twenty-four dozen plus on ice. Do you remember how the tailings used to flow down the flume from the C. & H. Mill? It was a similiar phenomenon. They telegraphed ahead to Milwaukee for help, and Milwaukee is some famous. Such singing, all the old

ones from "See the Little Angels" to the "Hamburg Show" were encored, repeated and encored. Things didn't quiet down until three A. M. and then some of the fellows who were getting their first Peninsula air in years were trying to put a corner on the air market and their gasps were magnificent.

It rained on Monday morning, but that didn't dampen the spirits of the bunch. We arrived in Houghton a little late; Murphy, Jimmy, Capt. Sperr, O. P., Seaman, Long Grant, and numerous others met us.

Say do you remember the struggle we had to start the Rhombs? Well thank God it started, lived and prospered. There were a big bunch of the Theta Tau boys on hand and the way they picked some of us lopsided parallelograms out was marvelous, and we were simply long lost brothers and of all the hearty, wholesome—well whats the use, every one was a "Pard" and you know what that means. Hustled us up to the fraternity house, the old Keeneewa Club, and placed in a room that they said I was to sleep in (I did for just a grand total of twelve hours that week.) It was sure back to the old days, the happy days.

Monday afternoon was spent going around the school, registering, looking over the new buildings, and meeting the old fellows. Do you remember when we walked into Murphy's Office for the first time, our schedule in one hand, hat in the other and heart up close to our Adams Apple; when the Mechanical building, Hubbel Hall, and the Assay Lab were the only buildings that M. C. M. could muster. I am proud of that old knowledge box, lots of stuff I learned there has been forgotten, but the idea of work, work, work was instilled in our minds. Murphy was always more or less of a joke with the fellows, when students, but now that we are out in life and are admirers of men who do things, I am one to take off my hat to President McNair, (not Murphy

any more to me) for he has done things, built up a school that has buildings, equipment and men, and turns out men.

That Monday night was one big night at Sackriders, Douglass House and all over town. Everyone was happy, jovial and congenial but none had a ballast that caused a list to leeward. Those gatherings were the real reunion.

Houghton has progressed with the school. Street car tracks run out beyond the college, College Avenue is paved and the decorations all over town were immense. Everyone had the Reunion spirit. East Houghton is all built up. I thought I was in a new city.

Tuesday morning was the big parade. Gov. Osborne had directed that training ship of Michigan Naval Reserves be at Houghton during the week and they with a batallion of the Michigan National Guard under Major Heckel, said Heckel used to play a mandolin in the Musical Club in '02, lead the parade. The grads, from different sections of the country, dressed in distinctive garbs, with the students, composed the parade. It was some parade which was properly reviewed and counter marched.

That afternoon Gov. Osborne, John Hays Hammond and the others addressed the people who congregated in a big tent that had been erected on the campus, in front of the Mechanical Building. To be truthful, I didn't go near one of those speech-fests. Speech making is O. K., but I think the spirit of it was not in harmony with the reunion. Old M. C. M. has turned out enuf prominent active men in the worlds affairs to call on her own, I hope that at the next reunion the only speakers are M. C. M. grads, who will tell what is doing and how it is done in their stamping ground. Men of national reputation, such as spoke at the talk parties, have an axe to grind, be it political, social or business, and at a Reunion there is little sense in using our heads for a grindstone.

Tuesday night the Amphidome saw the largest banquet ever pulled off in the Copper Country. Apollinaris water was the piece de resistance, no casualties. Several were wounded (in feelings.) The speeches were the typical "we have with us this evening" except Prof. "Heiny" Henderson. All through the Reunion said Heiny was the center of the story telling bunch. His collection of Cousin Jack stories is without end.

Wednesday was a quiet day compared with Tuesday, but there were some private reunions at the Douglass and Sacks. That morning an M. C. M. Alumni Association was organized. The Copper Country Grads ran things as they rightly should. They are on the ground and realize more than we nomads the necessities and use of such an organization. I hope the planning and running of the next reunion is put entirely in their hands.

Wednesday night reminded me of the start of real college spirit in Houghton. Remember the first night shirt parade? Murphy had forbidden that a rush be held on the campus, the rush was held and then, that first night shirt parade, Oh Joy, I still have a clipping from a New York Paper describing it. About the only difference between the first night shirt parade and the one on last Wednesday night was that between the Boston Tea Party and the Apollinaris Party.

All day Thursday was spent in viewing the mills and Surface Plants of some of the mines, north of Portage Lake. The best part was the hot tasty dinner at Gay. No Apollinaris served, thanks to Russ Smith.

Thursday night I felt so proud of our Theta Tau boys. It was listed as "In Tobero" given by the students at the Kerrage Theatre, and I guess H. & T. boys are "the students" for they had all the principal parts and most of the chorus. It was wonderful singing and acting and would play to packed houses on Broadway. The chorus of "Here to our M. C. M." runs in my head yet.

Friday saw the wind up, although most of the fellows went home Thursday. A trip was made to the South Range Mines and Mills and in the evening an informal dance in the Gym. A naval parade was held in the evening on the Lake. Saturday I pulled stakes for home. I was sorry to leave the old town, but full of the thought that in 1916 when the next Reunion is held, I'll be there.

That report you sent me of the Ibex property has been forwarded to one of my clients and judging from the way he nibbles, he may take a bite. I'll keep you informed of results.

Fraternally,

TUPPY.

EDITORIAL

This, the fifth annual issue of the GEAR is a fitting corner stone for Theta Tau. With the sixth chapter, Zeta, lately installed at the University of Kansas and the third alumni association, namely the Twin City, on a running basis, she has a foundation that is capable of holding a massive structure. One that, if specifications are rigorously adhered to, will be imposing as well as strong.

In last year's GEAR a large part of the Editor's page was taken up in showing the inefficiency of the system then in vogue of getting money from the Alumni to pay for the publication of the annual issue. To remedy this a plan was outlined which those in charge of this year's publication, have had a chance to test. The plan, like many new experiments, has failed, or else Theta Tau Alumni are a choice bunch of shysters, for not more than one-fourth subscribed for this year's GEAR. By some extra work on the part of each chapter the above figure has been materially increased. We prefer to blame the system rather than the Alumni and alter it to suit the case as has been forcibly presented to us this year.

Our idea is to centralize things more and put the publisher in direct touch with the Alumni, without the unnecessary delay and inconvenience of having all money first go through the chapter of each Alumnus. You can readily see that we are working pretty much in the dark by not knowing until the last minute just how many GEARS are going to be used. By filling out the card which you will find in an addressed envelope at the back of this book, ENCLOSING ONE DOLLAR, and mailing, you procure a 1913 GEAR when issued. This applies to the active men who will be Alumni at the time of issue next year. We urge you not to put this matter off but "DO IT NOW." Besides relieving the Chapter of this

trouble it simplifies matters and protects those getting out the book from any loss. The reluctance of the Alumni to come across with a dollar has caused their Chapters more or less embarrassment and us many months of waiting for money that the printer delights in dunning us for.

THE NEW PIN is still a myth to three-quarters of the Alumni. Knowing that you are all aware of it's existence and that the official pearl pin can be procured from your active Chapter for six dollars and a half, little more can be said on the subject. All loyal Theta Tau men have it or will as soon as six dollars and a half ceases to look like a mountain. Let us hope the number will soon be close to 100 per cent of the Fraternity roll.

THE SECOND BIENNIAL CONVENTION is to be held at Houghton under the auspices of Beta Chapter. The date for this meeting has been definitely settled for January 2nd and 3rd, 1913. This time was chosen as the one most convenient for all Chapters. Some important questions concerning the Constitution and future growth of the Fraternity will be discussed. All of the brothers that can possibly make the grade are cordially invited to be present. You will have the opportunity to meet the representatives of all the Chapters and digest much information. In short, the time spent will be well worth the trouble and expense.

The Chapters as a whole have done very well this year in coming through with their share of this book. Some of the letters could contain a little more detailed news without detracting any from the interest with which they will be read, but we are well satisfied. Too much stress cannot be laid on a complete and up-to-date directory, which each Chapter should have at all times. This year's GEAR directory while nearly complete was procured only at the expense of much unnecessary work. From now on each Chapter should attend to that and when the time

comes be ready to send same to the publisher without delay.

If you find your name missing in the Alumni Notes, say to yourself, "If I had written my Chapter once in a while they would have numbered me among the living."

ALUMNI NOTES (ALPHA)

William M. Lewis, Gamma '09 is with the Stowe & Webster Construction Co. at Keokuk, Iowa.

L. F. Regal, Alpha '11 was married in December.

E. L. Vinal, Alpha ex 1907 is in Seattle, Washington, after being several years with the U. S. G. S. in Alaska. He was ordered to the Philippines and settled in Seattle after resigning from the service. Married and has two children.

Oscar F. Woodrich, Alpha '08 is a Contractor and Constructing Engineer with headquarters at 209 Cedar Rapids Savings Bank, Cedar Rapids, Iowa.

Jack S. Sneve, Alpha '11 is working for the Cadillac Co. in Detroit.

I. B. Hanks, ex 1907, James Cowin, '07, and Randolph McCray, '07 all of the Alpha Chapter, are in Winnipeg, Can.

John J. Hurley, Alpha '11 is taking graduate work at Cornell.

W. W. Jones, Alpha '11, is assistant superintendent of the power plant of the Consolidated Fuel Co., Hia-watha, Utah.

Edward W. Leach, Alpha '10, is with the U. S. River Survey. He makes his winter headquarters at Rock Island, Ill., and in the summer at Ashburn, Mo. He can be addressed care of U. S. Eng. Rock Island at any time.

Rufus H. Milne, ex '13, after being out of college for a year, has returned to complete his course in Civil Engineering.

W. B. Atchinson, Alpha '10, Paul Johnson, Alpha '11, and Fred Sheffield, Alpha '09, are all doing Engineering work at International Falls, Minn.

M. C. Barnam, Alpha '11, J. P. Farnam, Alpha '11, and J. S. Brody, Alpha ex 1913, are all with the Gas Traction Co., Minneapolis.

A. N. Dallimore, Alpha '08, and H. Knowlton, Alpha '08, are constructing a new railroad in Arizona. We understand that Brother Knowlton will not need his bachelor headquarters.

Howard H. Fields, Alpha ex '13, has been transferred to Beta Chapter during the course of the year.

Milo P. Fox, Alpha ex 1910 will graduate this year from the U. S. M. A. at West Point.

H. J. Wasson, Alpha 1913 after spending about two years in practical mining work in Arizona has returned to complete his course in the Mining College.

E. J. Schrader, Alpha '05 in addition to his mining work in Mexico is consulting Engineer for the Pittsburg-Dolores Mining Co. at Pine Grove, Nevada. After being injured in Mexico in September he spent six weeks in the Sister's Hospital, Nogales, Arizona, and, after arranging his affairs, left for his home in St. Paul where he has been ever since. He knee is now practically well again and he soon expects to resume his professional work. He has been a frequent visitor to Chapter meetings.

B. B. Walling, Alpha '09, is now President and General manager of the University Co-operative Company, and is often at Alpha's meetings.

Arthur Larkin, Alpha '08 is general Manager of the Republic Creosoting Co. with headquarters in Minneapolis; and C. D. Batson, Alpha '07 is superintendent of the same company's plant at Mobile, Ala.

James Cowin, Alpha '07 and Miss Lorilla Marthrice were married Feb. 28 at the home of the bride's mother, 2500 Pillsbury Ave. Mr. and Mrs. Cowin will be at home to friends after May 1st at 911 McMillan Ave., Winnipeg, Manitoba.

Charles F. Haglin Jr. and Dale McEnary both from Alpha ex '13 have entered Massachusetts Institute of Technology to finish their courses.

Robert A. Jaques is finishing his college work at the University of Michigan.

A. Stanley Hill, Alpha '11 is on a prospecting trip north of the Soo in Canada.

J. J. Kennedy Alpha '08 has left Mexico and is now with the Tennessee Copper Co. at Ducktown, Tenn.

Kenneth J. Duncan, Alpha '10 has accepted the position of Manager for three mining companies:—Consolidated Vermillion & Extension Co., North American Iron Mining Co., and the Minnesota Steel & Iron Co. His headquarters are at Tower, Minnesota and he writes that he expects every Theta Tau man to look him up first thing when coming to that part of the iron mining regions.

Fred Sheffield, Alpha '09 is now located in Minneapolis.

T. S. Abbott, Alpha '11 after doing about a year's practical work in Bisbee, Arizona, started for Inde, Durango, to be with the Guadalupe Mining Co. He only got as far as Torrior and then was advised by the company not to come as the country was full of bandits. He returned to Arizona and is now at Miami. The company mentioned has now shut down and the Americans employed there had to make such a quick getaway that they had to bury the bullion from the last cleanup.

ALUMNI NOTES (EPSILON)

N. J. Lund, '11 is managing his father's business at Ferndale, California.

C. M. Staples, '11 is sampler for the Arizona Copper Co. at Morenci, Arizona.

G. B. Dillingham, '10 is storekeeper for the Goldfield Consolidated Mines Co., Nevada.

G. D. Smith is mine surveying at Virginia City, Nevada. His address is care United Comstock Pumping Association.

R. R. Vail, '11 was until recently with the Yukon Gold Co. Dawson, Alaska. He left in December for Johannesburg, South Africa where he will continue in mining.

G. L. Goodwin, '11 is assistant engineer for the Pinal Dome Oil Refining Co. Santa Maria, Cal.

W. L. Moody, '11 is on the Geological Staff of Southern Pacific Railroad. He is at present working near Mojave, California.

C. M. Heron, '11 is with the Engineering Dep't. of the El Tigre Mine., Yzabell, Sonora, Mexico.

G. M. Collins, '11 is assistant field engineer for the American Smelting and Refining Co. at Garfield, Utah. He is now working on the details of the Cottrell installation for reducing smelter fumes.

B. A. Otis, '12 is City Engineer of San Jacinto, Cal.

E. E. Behr is in the Hawaiian Islands managing a sugar plantation. He appears to like it very much.

A. D. Wilcox is employed in the Engineering Offices of Consolidated as surveyer in charge of measurement. He says he likes the work.

ALUMNI NOTES (DELTA.)

G. E. Alderson, '09 is at present assistant engineer with the Ducktown, Sulphur, Copper and Iron Co. Isabella, Tenn.

C. F. Koehler, '09 has been promoted in the new metallurgical laboratory of the Illinois Steel Co. at Gary, Ind.

Roy C. Wallis '10 is married and located at Midland, Mich. as cyanide expert for the Dow Chemical Co.

Carl Severin, '10 after conducting a successful line of research work in bromo-cyaniding, has gone to Victor,

Colorado where he is assisting in the installation of this process at the Portland Mill. Pick was married just before leaving, and his wife accompanied him on his western trip.

Z. C. Kline, '10 is still busy reducing expenses for the Fostoria Glass Co.

A. C. Hasse, '10 has abandoned the mining profession for the present and is with the Goodrich Rubber Co. of Akron, Ohio.

G. L. Trappman, '10 is civil engineer with the American Steel and Wire Co., Cleveland.

C. R. Kuzell, '10 has charge of the experimental department of the Anaconda Copper Co. of Great Falls, Montana.

Don Frisbie, '11 is consulting engineer for the Standard Steel Tube Co. Don is a busy man and has some of the Seniors at Case doing research work for him.

"Mellis" Vickery, '11 has decided that a legal career is more to his liking than a technical course. Vic has discovered that legal tender can be more easily extracted from the pockets of the populace than from the pockets of mother earth.

"Mac" McLaughlin, '11 is chief chemist for the No. 2 plant of the Standard Oil Co. at Cleveland.

"Looie" Haeberle, '11 is in the engineering department of the Oliver Mining Co. at Hibbing, Minn.

V. C. Fugman is assistant manager for the Nelson Jenks Coal Co. at Sand Coulee, Mont.

Will T. Hartley, '11 is running controlls on the open hearth at the American Steel and Wire Co., Newburg.

"Liz" Strand, '11 is metalographist with the Lackawanna Steel Co., South Chicago.

E. A. Taylor, '11 is working hard as assistant mining engineer with Chisos Mining Co., Terlingina, Texas.

Roscoe Stein, '11 is doing research work for the Dow Chemical Co. at Midland Mich.

B. D. Schram, Jr., '11 after spending the summer at Leadville with the Hilltop Mining Co. has returned to the East and is now employed at the American Steel Foundry Co., at Alliance, Ohio.

BETA CHAPTER ALUMNI NOTES

P. D. Brown survived the revolution and is now (Feb. 1912) doing consulting work on railroad construction in Durango, Mexico.

J. A. Barr announces the birth of J. A. Barr, Jr. on Nov. 5th, 1911. Congratulations. "Jimmy" Sr., occasionally sends Beta's actives a good practical problem for them to ponder over. The last one was M4 and was a sticker.

Jno. B. Armitage was married last summer. Beta sends congratulations. They are now at home in Duluth, Minnesota.

"Billy" Carroll attended the Reunion in August and was on the job every minute. He returned to Mexico shortly after.

W. B. Longan says, "When I get rich I am coming back North to spend the hockey season." Here's success.

"Al" Ferris says Arizona is a fine place after living in Petoskey. He is still thinking about the new coat of paint.

Ernest Klepetko is doing development work in Peru. His letters are a treat and are certainly enjoyed by the bunch. We are glad he does not forget us.

Chas. A. Kumke was married last summer. He honored Houghton with a visit soon after the wedding. He was accompanied by Mrs. Kumke.

"Bill" McNabb wishes to contribute a list of reptiles, insects etc., inhabiting the cypress swamps in and

around New Orleans where he is doing reclamation engineering.

"Peter" Newell is working in Boston, Massachusetts. We expect him back soon.

B. O. Pickard says, "I hope any Beta man going through Phoenix or getting within stopping distance will make my office his headquarters."

"Tuppy" Parkhurst was at the Reunion with the promised bells on. He apparently enjoyed every minute and wasted none.

"Pix" Peacock helped put a coat of red paint on Houghton Reunion week. In doing so he lost his voice.

J. F. Simpson was married late last summer. Congratulations. Jimmy is located at Toluca, Illinois.

"Cinder" Snyder is roughing it near Pioche, Nevada. Two letters a year is the record so far from this alumnus. Beta offers a leather medal.

"Cassie" Shedwick remains at Kennecott, Alaska. He seems to be a lover of the Arctic regions.

"Bay" Staples sticks with the lumber business in British Columbia.

"Dutch" Andrews visits the Copper Country often. Always in good spirits, especially this spring as he announces the birth of a son.

Ocha Potter is as interested in the house fund as ever. Betimes he is making a mine of the Superior. He wishes to announce the birth of a daughter. Congratulations.

"Mush" Meuche succeeds in keeping concealed in Houghton. He and his brother are doing diamond drilling.

Harry Turner late of New Solum Tp. Minnesota was last heard of on his way to Arizona. He has earned himself the name of "The Silent One."

"Liz" Gould is now a graduate of Potter's "efficiency engineering school" and has charge of that work at the North Kearsarge mine.

J. I. Ballard is first assistant engineer at the Quincy. He visits the house quite often.

"Bill" Perkins lives in the southwest room on the to the boys. He represents the Sullivan Machinery Co. here.

Wallace Cook maintains his usual respectful silence. He is making good at the Castile mine near Ironwood.

"Pink" Murphy is now a student at the University of Pittsburgh.

"Talc" Thielicke is now in Alaska doing a little placer mining.

Geo. Welker and his erstwhile wife "Benj" MacLachlan are together and happy in Wheeling, West Virginia.

John Wanvig has left the Superior and Boston and is now with Weed and Probert in Los Angeles.

"Murph" McNair and family are at the Helen Mine, Ontario. The twins are doing nicely. Bert's name was omitted in the 1911 GEAR by a mistake.

"Randy" Randolph is now in the Porcupine district. He was married last fall.

"Babe" Hicks had to leave school at Christmas time on account of serious illness from which we all hope that he will speedily recover.

R. B. Wagner is now chief engineer at Superior and Boston. A letter from Wag is as rare as radium.

George A. Morrison, who was assistant superintendent of the Mina Mexico Mines Co. in Sonora, Mexico, is now consulting engineer for the Republic Mining and Metal Co. and makes his headquarters at Mexico City. He is chiefly employed in making examinations in the state of Quereter. This is the last report obtained, but

in the meantime the Zapatistas may be after him. Let us hope he is a good sprinter.

"Gussy" Stilwill, having sojourned in his home city for a year, has recently departed for Ontario where he has a position.

"Jimmy" Thoms was married last Summer. He is now with the U S Gypsum Co. at Gypsum, Ohio.

"Browny" Morgan sends us an interesting report of the Southwestern brothers' doings at Christmas time in Globe. He is still with Ray Con.

Fred Varney is at present in Pachuca, Mexico doing we know not what. We do know, however, that he would be in Panal, Mexico working on mill construction as was his intention on leaving the States last fall had not another mining company swelled the list of fakes.

"Runt" Luce attended Beta's fall initiation and banquet showing the boys how it used to be done. He has since joined Bill McNabb in the South.

Ed Haug was back for the Reunion. All Houghton turned out to meet him and he called the oldest inhabitant by his first name.

R. B. Earling had as little to say as usual when here for the Reunion. Each word however was a pearl. He seemed to enjoy the occasion.

J. A. MacKillican was in Houghton Reunion time. He is city engineer at Escanaba, Michigan.

"Corby" Crabb was also among those present for the Reunion. Since then we hear of him riding the streets of Detroit in his new machine.

"Tony" Benson was one of the shining lights at the Reunion last summer. Besides making a regular speech at the banquet he made several irregular ones at other times.

"Hap" Alsip has left the Lake Superior Corporation, and is now located in the Cobalt country.

"Hazy" Hasselbring is making good as the general superintendant of the largest iron mine in Canada. He is working for the Lake Superior Corporation.

Kingston and Torbert are still with the Cerro de Pasco and we understand are both very successful.

R. W. Wenk has lately left his "chosen" profession and gone back to engineering.

J. R. Scott is working hard trying to make enough to take the big "plunge."

Walt Scott is taking on weight at Fort Stanton, New Mexico, where he went for his health.

C. B. Cameron has his headquarters in Milwaukee. He thinks little of Houghton as his Mecca now is Chicago. He was back here in August.

C. G. Sheldon is applying engineering to farming. Mrs. Sheldon and daughter visited in Houghton last Fall.

Merlin Wiley Foard visited Houghton in April. He is with Hasselbring in the Michipicotin country.

DIRECTORY

- | | | |
|---|-------------|-------------|
| ABBOT, THEODORE S. | E. M. | Alpha '11 |
| Guadaloupe Cons., Inde, Durango, Mex. | | |
| Box 100, Miami, Ariz. | | |
| | Chi Psi. | |
| ADAMS, JOHN W. | C. E. | Alpha '11 |
| 30 Kurt St., St. Paul, Minn. | | |
| Plymouth Bldg., Minneapolis. | | |
| | Chi Psi. | |
| ALDERSON, GEORGE EDWARD | B. S. | Delta '11 |
| E. 90th St., Cleveland, Ohio. | | |
| Ducktown S. I. & C. Co., Isabella, Tenn. | | |
| Pick & Shovel Club; Theta Nu Epsilon. | | |
| ALLEN, CHESTER A. | Student | Epsilon '12 |
| 2148 Clinton Ave., Alameda, Cal. | | |
| ALSIP, ALBERT A. | E. M. | Beta '08 |
| 4937 Woodlawn Ave., Chicago, Ill. | | |
| Helen Mine, Ontario, Can. | | |
| ANDERSON, GEORGE A. | B. S. E. M. | Beta '06 |
| 301 Hudson Ave., Detroit, Mich. | | |
| Consulting Engr., Detroit, Mich. | | |
| ANDERSON, ROBERT J. | Student | Delta '14 |
| 7608 Harvard Ave., S. E. Cleveland, Ohio. | | |
| ANDREWS, WORTH B. | E. M. | Beta '06 |
| 5601 London Road, Duluth, Minn. | | |
| Hart, California. | | |
| APPELGATE, JOHN S. | Student | Delta '14 |
| R. F. D. 3, Youngstown, Ohio. | | |
| ANDREWS, OLIVER L. | Student | Zeta '12 |
| Powhattan, Kansas. | | |
| ARMTAGE, JOHN B. | B. S. E. M. | Beta '10 |
| 422 East St., Three Rivers, Mich. | | |
| 202 Wolvin Bldg., Duluth, Minn. | | |
| ARMS, CHARLES S. | Student | Delta '12 |
| 1971 East 79th St., Cleveland, Ohio. | | |

- ATKINSON, WM. B. M. E. Alpha '10
Barnesville, Minn.
M. & O. Power Co., International Falls,
Minn.
- BAIRD, LYMAN S. Student Alpha '13
Austin, Minn.
Alpha Delta Phi.
- BALLARD, JOHN I. B. S. E. M. Beta '10
Alliance, Ohio.
Asst. Engr. Quincy Franklin Mine, Mich.
Sigma Alpha Epsilon. Tau Beta Pi.
- BARNAM, M. C. M. E. Alpha '11
2109 James Ave., So. Minneapolis, Minn.
Engr. Gas Traction Co., Mpls., Minn.
Beta Theta Pi.
- BARR, JAMES A. B. S. E. M. Beta '07
564 Colman Bldg., Seattle, Wash.
Asst. Mgr. International Agricultural Corp'n.
Mt. Pleasant, Tenn.
- BARTLETT, HIRAM L. B. S. E. M. Beta '04
Jackson, Mich.
Contractor, Virginia, Minn.
- BATSON, CHARLES D. C. E. Alpha '07
912 Goodrich Ave., St. Paul, Minn.
Mgr. Republic Creosoting Co., Mobile, Ala.
- BENSON, ANTHONY F. E. M. Beta '03
Hubbel, Mich.
Consulting Engr. Mesaba Engr. Co.
Virginia, Minn.
- BEVER, CLARENCE A. Student Delta '13
1796 W. 57th St., Cleveland, Ohio.
- BEHR, GEO. E. B. S. Epsilon '10
432 Arlington Ave., Pasadena, Cal.
Beta Theta Pi.

- BICKNEL, FRANK P. E. Met. Gamma '12
Golden, Colo.
576 Mack Blk., Denver, Colo.
- BISLAND, J. B. Student Gamma '13
Golden, Colo.
Sigma Alpha Epsilon.
- BOESCHE, JOHN P. Student Zeta '12
Gaylord, Kansas.
- BROCKWAY, ALVAH E. E. E. Alpha '09
524 8th Ave. S. E., Minneapolis, Minn.
Salesman Westinghouse E. & M. Co.
936 Metropolitan Life Bldg., Minneapolis,
Minn.
Tau Beta Pi.
- BRODIE, JAMES S. Alpha '13
260 Farrington Ave., St. Paul, Minn.
Engr. Gas. Traction Co., Minneapolis, Minn.
- BROWN, WALTER R. E. M. Gamma '10
Evanston, Ill.
Asst. Engr. Nevada Cons. Copper Co.
Ruth, Nevada.
Sigma Alpha Epsilon. Tau Beta Pi.
- BROWN, PERCY D. B. S. Beta '09
617 N. 34th St., Philadelphia, Pa.
Ry. Engr. 152 Calle Zembrano, Dgo., Mex.
Sigma Alpha Epsilon.
- BRYAN, R. R. E. Met. Gamma '08
Denver, Colo.
Chihauhau, Mexico.
- BUCK, FRED W. M. E. Alpha '09
1621 E. Superior St., Duluth, Minn.
Buck & Spring, Oxy-Acetylene Welding &
Cutting Co., Duluth, Minn.
Phi Kappa Psi, Tau Beta Pi, Sigma Xi.
- BUDDE, OTTO C. Student Delta '12
1905 E. 79th St., Cleveland, Ohio.

- BUDDLE, GEOFFERY A. Student Epsilon '12
Wyndham St., Auckland, New Zealand.
Tau Beta Pi, Sigma Xi.
- BUDWALDA, JOHN P. Student Epsilon '12
901 N. 3rd St., N. Yakima, Wash.
Sigma Alpha Epsilon.
- BURKE, GILBERT M. B. S. E. M. Beta '06
171 Main St., Canandaigua, N. Y.
Bullfrog Mining Co., Joplin, Mo.
- BURT, CURTIS F. Student Beta '12
Washington, D. C.
- BUSH, JOHN C. Alpha '12
23 60th Ave. E., Duluth, Minn.
Arch. & Engrs. Supply Co., Duluth, Minn.
Sigma Chi.
- CAINE, FREDERICK E. Student Delta '12
9151 Broadway, Cleveland, Ohio.
Pick & Shovel Club.
- CALVERT, C. E. Student Gamma '12
206 Church St., Whitewater, Wis.
Beta Theta Pi.
- CAMPION, HENRY H. Student Zeta '13
522 So. 7th St., Leavenworth, Kansas.
Beta Theta Pi.
- CAMERON, BURCH C. B. S. E. M. Beta '10
430 Sycamore St., Milwaukee, Wis.
Tau Beta Pi.
- CARLSON, ARTHUR E. Student Beta '14
417 5th Ave. E., Ashland, Wis.
- CARPENTER, P. H. E. M. Gamma '10
Sharron, Pa.
McGill, Nevada.
- CARROL, WM. F. B. S. Beta '08
423 W. 59th St., Chicago, Ill.
San Pedro Mines, San Luis Potosi, S. L. P.
Mex. C-o. Cia. Metalurgica Mexicana.

CASE, RAYMOND A.	Student	Beta '12
910 10th Ave. N., Great Falls, Mont.		
Tau Beta Pi.		
CHAFFIN, CHARLES E.	Student	Beta '14
Salt Lake City, Utah.		
CHAPMAN, WENDELL P.	Student	Alpha '14
Garden City, Minn.		
CLAPP, LEROY P.	E. M.	Gamma '08
Melbourne, Australia.		
COATS, CHAS. M.	Student	Zeta '13
Chanute, Kansas.		
COBBAN, ROLLO	E. E.	Alpha '09
Luverne, Minn.		
Westinghouse E. & M. Co., Butte, Mont.		
COLLIER, LLOYD A.	Student	Delta '14
2050 E. 93rd St., Cleveland, Ohio.		
COLLINS, GEORGE M.	B. S.	Epsilon '11
Los Gatos, Cal.		
Tau Beta Pi.		
CONLEY, W. E.	E. E.	Alpha '10
Lake Mills, Iowa.		
4411 Hough Ave., Cleveland, Ohio.		
COOK, WALLACE R.	B. S. E. M.	Beta '10
316 College Ave., Marinette, Wis.		
Asst. Supt. Castile Mining Co., Wakefield, Mich.		
Phi Kappa Sigma, Tau Beta Pi.		
COUNTRYMAN, RALPH		Epsilon '11
653 Chetwood St., Oakland, Cal.		
COWIN, JAMES	E. M.	Alpha '07
2408 First Ave. So., Minneapolis, Minn.		
Business Mgr., 816 Phoenix Bldg., Minneapolis, Minn.		
Chi Psi.		

- CHANDLER, MALCOLM D. Alpha '08
1618 Calhoun Pl., Minneapolis, Minn.
First National Bank, Marmouth, N. D.
Phi Kappa Psi.
- CRABB, JAMES M. E. M. Beta '09
38 Warren Ave. W., Detroit, Mich.
Engr. Genesee Coal Co., Flint, Mich.
- CROCKER, BERTRAM E. Beta '09
311 East C St., Iron Mountain, Mich.
C. & A. Smelter, Douglas, Ariz.
- CRUTCHER, E. R. Student Gamma '13
Salida, Colo.
Sigma Alpha Epsilon.
- CURTISS, LYON B. B. S. Alpha '09
Mpls. Steel & Mch. Co., Minneapolis, Minn.
Sigma Alpha Epsilon.
- CURTIS, LEROY P. E. M. Gamma '08
Littleton, Colo.
Supt. Mosida Fruit Lands Co., Provo, Utah.
Kappa Sigma.
- CURTIS, BENJ. J. Student Alpha '14
Fairmount, Minn.
Delta Tau Delta.
- CURTIS, THOS. H. Student Alpha '12
Fairmount, Minn.
Delta Tau Delta.
- DAVIS, ELMER F. B. S. Epsilon '10
2644 Dingle Way, Berkeley, Cal.
- DALLIMORE, ARTHUR N. C. E. Alpha '08
821 Marshall Ave., St. Paul, Minn.
Engr. Knowlton-Bollen Const. Co.,
231 Ry. Exchange Bldg., Denver, Colo.
- DAVID, JOE Student Beta '13
68 Catherine St., Muskegon, Mich.

- DAVIS, SHERWIN B. Student Epsilon '12
2415 Dwight Way, Berkeley, Cal.
Sigma Chi, Tau Beta Pi, Sigma Xi.
- DECAMP, W. V. E. M. Gamma '08
Denver, Colo.
Genl. Mgr. Pacific Copper Co., Crown
King, Ariz.
- DICK, JAMES E. Student Gamma '12
667 W. Market St., Akron, Ohio.
Sigma Alpha Epsilon.
- DILLINGHAM, GEORGE B. B. S. Epsilon '10
2401 Durant Ave., Berkeley, Cal.
Phi Delta Theta.
- DITTUS, E. J. Gamma '11
1438 Franklin St., Denver, Colo.
Phi Kappa Psi.
- DORR, WM. R. Student Alpha '15
598 Lincoln Ave., St. Paul, Minn.
Chi Psi, Mu Phi Delta.
- DOUGLAS, WM. C. E. M. Gamma '11
676 W. 8th St., Plainfield, N. J.
500 Clark Blk., Butte, Mont.
Sigma Alpha Epsilon.
- DOWNING, ROBERT L. B. S. E. M. Beta '06
Hibbing, Minn.
Copper Hill, Tenn.
- DUNN, JAMES L. Student Gamma '12
Golden, Colo.
- DUNCAN, KENNETH J. E. M. Alpha '10
806 4th Ave. S. E., Minneapolis, Minn.
Mgr. Cons. Vermillion & Extension Co.,
Tower, Minn.
- DU TOIT, GEO. H. M. E. Alpha '10
Chaska, Minn.
Minneapolis Steel & Machine Co., Minne-
apolis, Minn.
Beta Theta Pi.

- DYER, CHAS. E. E. M. Gamma '10
 Golden, Colo.
 Daly West Mng. Co., Park City, Utah.
 Tau Beta Pi.
- DYRENFORTH, DONALD Student Gamma '12
 Clinhurst, Ill.
 Sigma Alpha Epsilon.
- EARLING, ROY B. B. S. E. M. Beta '08
 1310 Ritchie Place, Chicago, Ill.
 Chief Engr. Ray Central, Ray, Ariz.
 Tau Beta Pi.
- EAST, J. H. E. M. Gamma '10
 Denver, Colo.
 Painter, Wyoming.
- EDGERTON, RALPH E. Alpha '07
 431 So. Huron St., Sand Point, Idaho.
 Insurance, Sand Point, Idaho.
 Sigma Alpha Epsilon.
- EDWARDS, JOHN GARDNER Student Beta '13
 119 College Ave., Houghton, Mich.
- EDWARDS, HARRY RICE Student Beta '13
 119 College Ave., Houghton, Mich.
- EIDEMILLER, HOWARD M. Student Alpha '14
 432 Dewey Ave., St. Paul, Minn.
 Zeta Psi
- ELDER, ROBERT B. E. Met. Gamma '08
 Kappa Sigma House, Golden, Colo.
 Kuner, Colo.
 Kappa Sigma, Tau Beta Pi.
- ELFSTRUM, A. E. C. E. Alpha '11
 Willmar, Minn.
 Engr. N. P. Ry., Missoula, Mont.
- ELLIS, BRUCE B. Alpha '08
 903 London Road, Duluth, Minn.
 Engr. E. J. Longyear Co., Houghton, Mich.
 Sigma Chi.

ELLIOTT, GORDON P.	Student	Beta '12
Globe, Ariz.		
EVANS, CARL WATSON		Beta '11
Houghton, Mich.		
Phoenix, Ariz.		
EVERHEART, ERNEST	B. S.	Beta '08
644 N. Crockett St., Sherman, Texas.		
Aptdo. No. 1, Pachuco, Hidalgo, Mex.		
FARNUM, JULIAN P.	M. E.	Alpha '11
1405 Yale Place, Minneapolis, Minn.		
Gas Traction Co., Minneapolis, Minn.		
Psi Upsilon.		
FELLMAN, CARL M.	E. M.	Beta '11
Marquette, Mich.		
Chemist, Castile Mining Co., Ramsay, Mich.		
FERRIS, ALBERT LERU	E. M.	Beta '11
514 Elizabeth St., Petoskey, Mich.		
Engr. Superior & Boston, Globe, Ariz.		
FIELDS, HOWARD HAWTHORNE	ex-Alpha '13	
1889 Carrol St., Merrian Park, Minn.		
Student, Mich. Coll. Mines, Houghton, Mich.		
Chi Psi.		
FLINN, A.	Student	Gamma '13
Golden, Colo.		
Kappa Sigma.		
FOARD, MERLIN WILEY		Beta '12
312 E. Spruce St., Sault Ste. Marie, Mich.		
Magpie Mine, Ontario.		
FORBES, H. H.	Student	Gamma '13
Golden, Colo.		
FOX, MILO P.		Alpha '10
Mankato, Minn.		
Cadet, U. S. M. A. West Point, N. Y.		
Sigma Chi.		
FRICK, F. F.		Gamma '08
Peru, Indiana.		
Anaconda Smelter, Anaconda, Mont.		

- FRISBIE, DONALD BALDWIN B. S. Delta '11
123 Melrose Ave., Toledo, Ohio.
Asst. Mgr. Standard Steel Tube Co., Toledo,
Ohio.
- FRITSCH, GEORGE Gamma '11
Denver, Colo.
Salina, Colo.
- Sigma Nu
- FUGMAN, VICTOR CHARLES E. M. Delta '10
Ambler Heights, Cleveland, Ohio.
Engr. Nelson Coal Co., Sand Coulee, Mont.
Zeta Psi, Theta Nu Epsilon, Tau Beta Pi.
Sigma Xi.
- FURBER, PIERCE POWERS C. E. Alpha '08
4517 Dupont Ave. S., Minneapolis, Minn.
Asst. Engr. 816 Phoenix Bldg., Minneapolis,
Minn.
- Sigma Alpha Epsilon.
- GARNETT, THOMAS HERNDON E. M. Gamma '11
1315 Court St., Pueblo, Colo.
Asst. City Engr., Butte, Mont.
- Sigma Nu
- GESTER, GEO. CLARK B. S. Epsilon '08
2800 Derby St., Berkeley, Cal.
- GESTER, STEPHEN HOVELL Student Epsilon '12
2800 Derby St., Berkeley, Cal.
- GILCHRIST, ARCH Student Beta '12
1206 E. River St., Davenport, Iowa.
- Delta Tau Delta
- GLASGOW, C. W. E. M. Gamma '10
4371 Washington Ave., St. Louis, Mo.
Phi Delta Theta.
- GOETZENBERGER, RALPH L. Student Alpha '14
2621 Emerson Ave. S., Minneapolis, Minn.
Psi Upsilon.

- GOODWIN, GUY LEONARD B. S. Epsilon '10
 Santa Maria, Cal.
 Phi Kappa Psi.
- GOULD, EDGAR HAROLD B. S. E. M. Beta '11
 Battle Creek, Mich.
 Engr. Kearsarge Mine, Kearsarge, Mich.
 Phi Mu Alpha.
- GRAHAM, ERNEST R. B. S. E. M. Beta '07
 Croswell, Mich.
 Tau Beta Pi.
- GREJGLA, EUGENE E. Alpha '08
 Mng. Engr., Leanington, Utah.
 Chi Psi.
- HAEBERLE, CARL FREDERICK B. S. Delta '11
 1625 E. 49th St., Cleveland, Ohio.
 Engr. O. I. M. Co., Box 744, Hibbing, Minn.
 Zeta Psi.
- HAGLIN, CHAS. F. Student Alpha '13
 230 Lumber Exch. Minneapolis, Minn.
 M. I. T., Boston, Mass.
 Psi Upsilon.
- HANKS, ISAAC B. Alpha '07
 2636 Hennepin Ave., Minneapolis, Minn.
 Supt. Security Lumber Co., Winnipeg, Canada.
 Delta Tau Delta.
- HANSEN, GEORGE P. Student Delta '13
 8815 Walker Ave., Cleveland, Ohio.
- HARTLEY, WILL T. E. M. Delta '11
 3238 Marvin Ave., Cleveland, Ohio.
 Chemist Newburgh Works, A. S. & W. Co.,
 Cleveland.
- HARRIS, WM. J. Student Beta '13
 1212 Holland Ave., Saginaw, Mich.
- HARTMAN, LEON R. Student Alpha '14
 2807 Garfield Ave., Minneapolis, Minn.
 Zeta Psi.

- HARVEY, JOHN V. E. M. Gamma '11
1201 18th St., Sioux City, Iowa.
Engr. Peregrina M. & M. Co., Guanajuato,
Mexico.
- HASSE, ALBERT C. B. S. Delta '10
3552 W. 25th St., Cleveland, Ohio.
Diamond Rubber Co., 281 Locust Ave., Akron,
Ohio.
- HASSELBRING, ALBRECHT E. M. Beta '06
Flint, Mich.
Genl. Supt. Michipicotten Dist., Magpie Mine,
Ontario.
- HAUG, EDWARD J. Beta '09
Houghton, Mich.
Tonopah Extension Co., Tonopah, Nev.
- HAUSER, KENNETH D. C. E. Alpha '11
827 Mound Ave., St. Paul, Minn.
Engr. Hauser & Foley, Ry. Contractors.
Delta Tau Delta.
- HAUSER, R. V. B. S. Alpha '10
827 Mound Ave., St. Paul, Minn.
Engr. Hauser & Foley, Ry. Contractors.
Delta Tau Delta.
- HAYNES, JACK E. B. A. Alpha '08
1787 Hayne Ave., St. Paul, Minn.
Selby & Virginia Ave., St. Paul, Minn.
- HELLBERG, EDWARD A. B. S. E. M. Beta '09
Norway, Mich.
Asst. Engr. O. I. M. Co., Norway, Mich.
- HERON, CHARLES M. B. S. Epsilon '11
2426 Virginia St., Berkeley, Cal.
Phi Kappa Sigma.
- HERRES, OTTO JR. E. M. Gamma '11
1728 Race St., Denver, Colo.
Engr. Utah Fuel Co., Castle Gate, Utah.

HESTON, ROBERT P.	Student	Delta '14
3415 Detroit Ave., Toledo, Ohio.		
HEWITT, MAURICE W.	Student	Alpha '14
4602 Dupont Ave. S., Minneapolis, Minn.		
	Phi Sigma Kappa.	
HICKS, L. R.	Student	Beta '13
736 Algoma St., Oshkosh, Wis.		
HIGH, RALPH B.	Student	Epsilon '11
306 Van Buren Ave., Oakland, Cal.		
	Phi Kappa Psi.	
HILL, STANLEY A.	E. M.	Alpha '11
3324 Colfax Ave. So., Minneapolis, Minn.		
Magpie Mine, Ontario, Can.		
	Psi Upsilon.	
HILL, C. R.	Student	Gamma '12
Golden, Colo.		
HILLSDALE, PAUL	Student	Gamma '12
Golden, Colo.		
HINCKLEY, PAUL E.	Student	Beta '14
834 S. Park St., Kalamazoo, Mich.		
HINCKLEY, T. LESLEY C. E., M. I. T. '05.	Hon. Alpha	
745 Osceola Ave., St. Paul, Minn.		
Civil Engr. Technology Club, 17 Grammercy Park, New York.		
HOAG, CLIFFORD	Student	Beta '13
St. Johns, Mich.		
HOPKINS, HERMAN H. JR.	B. S. E. M.	Beta '08
Mining Engr. 164 N. Dearborn St. Chicago, Ill.		
HOSTETLER, CURTIS B.	Student	Zeta '13
Belleville, Kansas.		
	Alpha Tau Omega	
HOUSTON, FRED KENNEDY	E. M.	Beta '05
160 E. 3rd St., Beaver, Penn.		
HUDSON, W. E.	Student	Gamma '13
Golden, Colo.		

- HUDSON, FRANK S. Student Epsilon '11
2735 Derby St., Berkeley, Cal.
Phi Gamma Delta, Sigma Xi.
- HUGHES, WILLIAM L. Beta '13
2207 E. 89th St., Cleveland, Ohio.
- HURLEY, JOHN J. Alpha '11
Pine City, Minn.
Special Work, Cornell University.
- JAQUES, ROBERT C. E. Alpha '09
1205 E. 3rd St., Duluth, Minn.
Student, University of Michigan.
Sigma Chi.
- JEVNE, GEO. W. C. E. Alpha '10
2441 Elliot Ave., Minneapolis, Minn.
Engr. 816 Phoenix Bldg., Minneapolis, Minn.
Phi Sigma Kappa.
- JOHNSON, PAUL A. B. S. C. E. Alpha '11
2911 Lyndale Ave. N., Minneapolis, Minn.
Contractor, International Falls, Minn.
Sigma Alpha Epsilon.
- JOHNSTON, FRED E. Student Zeta '12
Madison, Kansas.
- JONES, E. F. E. M. Gamma '10
Zampacitos, Mexico.
- JONES, W. W. E. E. Alpha '11
Windom, Minn.
Asst. Supt. Utah Cons. Fuel Co., Hiawatha,
Utah.
- KASPER, WALTER F. M. E. Alpha '11
Onatonna, Minn.
Zamboni Garage, Onatonna, Minn.
Phi Gamma Delta.
- KENNEDY, JOHN J. E. M. Alpha '08
436 Iglehart Ave., St. Paul, Minn.
Engr. Tenn. Copper Co., Ducktown, Tenn.
Psi Upsilon.

- KESNER, HENRY J. E. C. Hon. Alpha
Faculty Club, Berkeley, Cal.
Asst. Prof. C. E., U. of California.
Beta Theta Pi, Tau Beta Pi.
- KILBOUNE, B. N. Student Gamma '13
Pueblo, Colo.
- KILGOUR, M. H. Sigma Nu. E. M. Gamma '08
Chittenham, England.
16 Exchange Place, New York, N. Y.
- KINGSLEY, NEIL S. Alpha '11
1009 Univ. Ave., Minneapolis, Minn.
Delta Tau Delta.
- KINGSTON, CARL JOHN Beta '06
Central Mine, Mich.
Cerro de Pasco Mng. Co., Cerro de Pasco,
Peru.
- KIRCHMAN, ROBERT I. E. M. Gamma '08
Hurley, New Mexico, via Santa Rita.
- KIRKPATRICK, MARSENA R. E. M. Beta '07
Bellingham, Wash.
- KISSOK, ALLAN Gamma '12
79 Wall St., New York.
Sigma Alpha Epsilon.
- KLEPTKO, ERNEST B. S. E. M. Beta '11
46 Garden Place, Brooklyn, N. Y.
Lima, Peru. S. A. Apartado 708.
- KLINE, ZENAS C. B. S. Delta '10
Youngston, Ohio, R. F. D. No. 3.
Fostoria Glass Specialty Co., Fostoria, Ohio.
- KNOWLTON, HERBERT H. C. E. Alpha '08
1308 5th St. S. E., Minneapolis, Minn.
Ry. Engr. Lewis Springs, Ariz.
- KOEHLER, CARL F. Delta '09
3010 Daisy Ave., Cleveland Ohio.
540 Van Buren St., Gary, Ind., Box 304.

- KOENIG, GEORGE A. M. E., A. M., Ph. D. Hon. Beta
 233 College Ave., Houghton, Mich.
 Professor of Chemistry, M. C. M.
- KOONTZ, KINTER K. B. S. E. M. Beta '08
 542 Central Ave., Johnstown, Pa.
 Sharron Mine Co., Metcalf, Ariz.
- KOPPER, EDWARD JR. Student Alpha '14
 438 Portland Ave., St. Paul.
 Psi Upsilon.
- KRATZ, ARTHUR M. B. S. Beta '05
 23 Charles St., Calumet, Mich.
 Box 149, Johannesburg, South Africa.
- KRUGER, HERMAN A. E. M. Gamma '09
 Box 1336, Denver, Colo.
 Supt. San Juan Mine, Ojuila, Durango, Mex.
 Beta Theta Pi, Tau Beta Pi.
- KRUSCHKE, GEO. A. E. E. Alpha '09
 1923 E. Greysolan Road, Duluth, Minn.
 Gen'l. Elect. Co., Minneapolis, Minn.
- KUMKE, CHAS. A. E. M. Beta '06
 35 Humboldt Ave., Detroit, Mich.
 Mining Engr., Globe, Ariz.
- KUZELL, CHAS. R. E. M. Delta '10
 5914b Longfellow Ave., Cleveland, Ohio.
 Investigator B & M Smelter, Great Falls,
 Mont.
 Tau Beta Pi.
- LADD, GREELEY Student Alpha '13
 1445 E. River Road, Minneapolis, Minn.
 Phi Gamma Delta.
- LANNON, JAMES A. Gamma '11
 1024 N. Main St., Pueblo, Colo.
 Midas Gold Mng. Co., Knob, Shasta Co., Cal.
 Tau Beta Pi, Sigma Alpha Epsilon
 Kappa Beta Phi.

- LARKIN, ARTHUR E. Alpha '08
59 Williams Ave. S. E., Minneapolis, Minn.
Supt. Republic Creosoting Co., Minneapolis, Minn.
Beta Theta Pi.
- LAWSON, ANDREW W. Student Epsilon '12
1515 La Lona Ave., Berkeley, Cal.
Phi Kappa Sigma.
- LEACH, EDWARD W. C. E. Alpha '10
Winona, Minn.
Care U. S. Engr's. Office, Rock Island, Ill.
- LESH, H. B. E. M. Gamma '10
909 West End Ave., New York, N. Y.
Porcupine, Ontario.
Sigma Nu.
- LEWIS, W. M. E. M. E. Met. Gamma '09
642 Portland Ave., St. Paul, Minn.
Care C. E. Lewis, State Capitol, St. Paul, Minn.
- LEWIS, JOHN W. Student Alpha '12
1721 Univ. Ave., Minneapolis, Minn.
- LITCHFIELD, R. E. Student Gamma '13
Golden, Colo.
Sigma Alpha Epsilon.
- LONGAN, WALTER B. B. S. E. M. Beta '08
1100 E. Armour Blvd., Kansas City, Mo.
Foreman Ariz, Parral Mng. Co., Parral, Chihuahua, Mex.
- LOUDERBACK, GEO. D. B. S. Ph. D. Epsilon '96
2713 Derby St., Berkeley, Cal.
Asst. Prof. Geology, U. of Cal.
Sigma Xi.
- LOWELL, JAMES B. E. M. E. Met. Gamma '08
24 Brattle St., Worcester, Mass.
Supt. Geo. A. Fuller Co., Boston, Mass.
Tau Beta Pi, Phi Gamma Delta.

- LUCE, EARL P. Beta '10
 1028 5th Ave., Grand Rapids, Mich.
 Engr. 914 Hibernia Bldg., New Orleans, La.
- LUND, N. J. B. S. Epsilon '11
 Ferndale, Cal.
- McENARY, DALE R. Alpha '13
 2324 Pleasant Ave., Minneapolis, Minn.
 Student M. I. T., Boston, Mass.
 Alpha Delta Phi.
- MCGINNIS, WM. H. C. E. Alpha '10
 510 15th Ave. S. E., Minneapolis, Minn.
 with Grant Smith & Co., St. Paul, Minn.
 Delta Tau Delta.
- MCHUGH, PHIL M. E. M. Gamma '11
 809 S. Kline St., Aberdeen, South Dakota.
 Engr. Dorr Cyanide Mach. Co., Denver, Colo.
 Sigma Alpha Epsilon, Kappa Beta Phi.
- MACINNES, GEO. R. Student Delta '13
 6206 Wakefield Ave., Cleveland, Ohio.
- MACKILLICAN, JAMES A. B. S. Beta '06
 330 Oak St., Escanaba, Mich.
 City Engr., Escanaba, Mich.
- McLACHLAN, BENJ. H. Beta '11
 24 E. 114th Place, Chicago, Ill.
- McLAUGHLIN, ADELBERT R. B. S. Delta '11
 1958 E. 93rd St., Cleveland, Ohio.
 Chemist, Standard Oil Co.
- McNABB, WILLIAM T. B. S. E. M. Beta '11
 316 Sand Beach Ave., Bad Axe, Mich.
 Engr. 917 Hibernia Bldg., New Orleans, La.
 Tau Beta Pi.
- McNAIR, BERT M. Beta '12
 902 Cedar St., Soo, Mich.
 Helen Mine, Ontario.

- | | | |
|---|-------------|-----------|
| McRAE, RANDOLPH | E. M. | Alpha '07 |
| Hamilton, Ont. | | |
| Davidson & McRae, Toronto, Canada. | | |
| Alpha Delta Phi. | | |
| MALM, ROYAL D. | Student | Delta '12 |
| 1448 E. 115th St., Cleveland, Ohio. | | |
| MANGLES DORF, A. H. | Student | Zeta '12 |
| 1100 Santa Fe St., Atchison, Kansas. | | |
| Alpha Tau Omega. | | |
| MARSHALL, GEO. B. | | Beta '07 |
| 181 Alexander Ave., New York, N. Y. | | |
| Supt. Cyanide Plant, Mina La Union Miramar, Costa Rica, C. A. | | |
| MARSHALL, EMERY M. | Student | Gamma '11 |
| 1201 8th St., Des Moines, Iowa. | | |
| 12 Newberry St., Boston, Mass. | | |
| Phi Gamma Delta. | | |
| MATCHETTE, HENRY J. | Student | Alpha '14 |
| 1416 Capitol Ave., St. Paul, Minn. | | |
| MATHESON, K. H. | Student | Gamma '11 |
| Hugo, Colo. | | |
| Kappa Sigma. | | |
| MAY, A. J. JR. | Student | Gamma '12 |
| W. W. G. House, Golden, Colo. | | |
| METCALF, JOHN C. | Student | Beta '13 |
| 83 Stedman St., Brookline, Mass. | | |
| MEUCHE, ALFRED H. | B. S. E. M. | Beta '05 |
| 135 Agate St., Houghton, Mich. | | |
| Meuche & Meuche Engrs. & Geologists, | | |
| Houghton, Mich. | | |
| Tau Beta Pi. | | |
| MILLS, HAROLD F. | Student | Beta '14 |
| 149 Ruby St., Houghton, Mich. | | |
| MILNE, RUFUS H. | Student | Alpha '14 |
| 812 N. Main St., Crookston, Minn. | | |

- MINER, ROBERT Alpha '10
3022 Dupont Ave., Minneapolis, Minn.
Instr. Utica Free Academy, 50 Kemble St.,
Buffalo, N. Y.
Sigma Chi.
- MOODY, GRAHAM B. Student Epsilon '12
215 E. 42nd Ave., Los Angeles, Cal.
Phi Beta Kappa, Sigma Xi.
- MOODY, WM. LADD B. S. Epsilon '11
215 E. 42nd Ave., Los Angeles, Cal.
Tau Beta Pi, Sigma Xi.
- MORGAN, GEORGE H. B. S. E. M. Beta '08
1010 Bryson Ave., Youngstown, Ohio.
Engr. Ray Central, Ray, Ariz.
- MORRISON, GEO. A. B. S. E. M. Beta '04
2111 Morgan Ave., Morgan Park, Ill.
Republic Mining & Metal Co., Mexico City,
Mex.
- MOWERY, CLARENCE W. C. E. Alpha '08
1124 21st Ave. N., Minneapolis, Minn.
Res. Engr. N. P. Ry., Glendive, Mont.
- MURPHY, NORBERT D. Beta '12
318 6th St., Calumet, Mich.
Student U. of Pittsburg, Pittsburg, Penn.
- MURPHY, GEO. R. Student Zeta '13
1121 N. Central Ave., Oklahoma City, Okla.
Beta Theta Pi.
- NEER, PAUL Gamma '09
Golden, Colo.
San Juanita, Honduras.
- NEWELL, FENN BAILEY Beta '13
287 Washington Ave., Providence, R. I.
24 Binford St., Boston, Mass.
- NEWKIRK, DANIEL L. Student Beta '11
123 Maybury Gd. Ave., Detroit, Mich.
Tau Beta Pi.

NOLAN, E.	Student	Gamma '13
Golden, Colo.		
	Sigma Nu.	
O'BRIEN, JOHN CHAS.	Student	Alpha '12
255 W. George St., St. Paul, Minn.		
OLSEN, WALTER S.	Student	Alpha '12
306 William St., St. Paul, Minn.		
OTIS, BURDETT A.	E. M.	Epsilon '11
San Juanto, Cal.		
PALMER, PORTEUS B.	E. M.	Alpha '10
923 Grand Ave., St. Paul, Minn.		
Claim Agt. Employers Liability Co.,		610
Capitol Bldg.		
	Beta Theta Pi.	
PARKER, ROSS I.	Student	Zeta '12
1018 W. 38th St., Kansas City, Mo.		
	Beta Theta Pi.	
PARKHURST, FREDERICK S. JR.	B. S. E. M.	Beta '04
522 Cedar Ave., Niagara Falls, N. Y.		
City Engr. Niagara Falls, N. Y.		
PERKINS, JOHN C.	Student	Beta '13
3601 Clinton Ave., Cleveland, Ohio.		
PERKINS, WILLIAM J.	B. S. E. M.	Beta '07
Norway, Mich.		
Salesman, Sullivan Mach. Co.,		Houghton,
Mich.		
	Kappa Sigma.	
PERRY, JOE B.	E. M.	Alpha '12
Minneapolis, Minn.		
	Sigma Alpha Epsilon.	
PHILLIPS, ROBERT B.		Beta '06
214 Durango St., El Paso, Texas.		
Address not known.		
PICKARD, BYRON O.	B. S. E. M.	Beta '07
6002 Lincoln Ave., Omaha, Neb.		
Const. Engr., Worthington-Packard Co.,		
Phoenix, Ariz.		

- POTTER, OCHA B. S. Beta '11
Houghton, Mich.
Assist. Sup't. Superior Copper Co., Houghton,
Mich.
- Tau Beta Pi.
PRICE, WM. F. Student Zeta '13
123 E. 10th, Topeka, Kan.
- PROUTY, ROSWELL W. Student Alpha '12
478 Ashland Ave., St. Paul.
 Chi Psi.
- QUINN, M. F. Student Alpha '12
E. 819 Sharp Ave., Spokane, Wash.
 Sigma Alpha Epsilon.
- QUINLAN, HOWARD Alpha '13
542 Ashland Ave., St. Paul.
 Theta Delta Xi.
- RAMSEY, E. R. Gamma '12
2373 Albion St., Denver, Colo.
 Sigma Alpha Epsilon.
- RANDOLPH, GEORGE OSCAR B. S. E. M. Beta '07
213 East Arch St., Marquette, Mich.
Porcupine, Ont. Box 37.
- RICE, PROF. H. A. Hon. Zeta
1304 Ohio St., Lawrence, Kan.
- RIEGEL, LOUIS F. E. E. Alpha '11
3220 Chicago Ave. S., Mpls.
Mpls. General Elect. Co., 15 S. 5th St.
- RIDDLE, LYNN BARNES Student Delta '12
411 5th St., Marrietta, Ohio.
 Alpha Sigma Phi, Tau Beta Pi.
- RIGBY, WILLIAM ARTHUR Student Beta '12
Mt. Vernon, Iowa.
 Sigma Nu.
- RIGGS, FRED Beta '10
323 W. State St., Princeton, Ind.
Univ. of Indiana, Bloomington, Ind.

- | | |
|---|-------------------|
| RIKER, EUGENE ALFRED | Beta '10 |
| 725 Church St., Flint, Mich. | |
| Olivet, Mich. | |
| RINGSRED, GERHARD J. | Student Alpha '14 |
| 319 W. 4th St., Duluth, Minn. | |
| ROOD, LYNN | E. M. Alpha '09 |
| 584 Grand Ave., St. Paul. | |
| National Iron Works, Duluth, Minn. | |
| Delta Upsilon. | |
| ROSE, WM. A. | E. M. Alpha '06 |
| 114 Center St., Hibbing, Minn. | |
| Chief Engr. Oliver Iron, Hibbing, Minn. | |
| Delta Tau Delta. | |
| ROCKWOOD, FLETCHER | Student Alpha '15 |
| 1700 Thomas Place, Mpls. | |
| Psi Upsilon. | |
| RUSSELL, D. O. | E. M. Gamma '09 |
| Kuala Lumpur, Selangor, Federated Malay States. | |
| SAWYER, ELDTRETH L. | Alpha '11 |
| 1506 Emerson Ave. N., Minneapolis. | |
| Phi Gamma Delta. | |
| SCHABER, CHAS. F. | Student Beta '12 |
| 434 Williams St., Jackson, Mich. | |
| Theta Xi. | |
| SCHAFER, LOUIS | E. M. Gamma '09 |
| Lake City, Colo. | |
| Engr. Silverton, Colo. | |
| Kappa Sigma, Tau Beta Pi. | |
| SCHLOTTER, LAWRENCE CLIFFORD | Beta '13 |
| Alliance, Ohio. | |
| Sigma Nu. | |
| SCHRADER, ERICH J. | E. M. Alpha '05 |
| 694 Marshall Ave., St. Paul, Minn. | |
| Genl. Mgr. Pittsburg Dolores Mng. Co., Pine Grove, Nev. | |

- SCHRAMM, BERNHARD DANIEL B. S. Delta '11
 2715 Scovill Ave., Cleveland, Ohio.
 Aprnts. American Steel Foundries, Alliance,
 Ohio.
- SCHRAMM, OTTO FERDINAND Student Delta '12
 2715 Scovill Ave., Cleveland, Ohio.
- SCHREIBER, GEO. F. Student Beta '14
 624 N. 4th St., Saginaw, Mich.
- SCHROEDER, WALTER HUGH B. S. Epsilon '11
 1312 S. Piguirva St., Los Angeles, Cal.
 Phi Delta Theta.
- SCOTT, J. ALLYN, JR. Alpha '11
 315 55th Ave. W., Duluth, Minn.
 405 N. Central Ave. W., Duluth, Minn.
 Phi Kappa Psi.
- SCOTT, JAMES RALPH Beta '11
 615 N. Farragut St., Bay City, Mich.
 South Porcupine, Ont.
- SCOTT, WALTER GIFFORD Beta '12
 Houghton, Mich.
 Fort Staunton, New Mexico.
- SCOTT, JOHN CLINTON Student Delta '14
 2138 W. 26th St., Cleveland, O.
 Zeta Psi.
- SEVERIN, CARL B. S. Delta '10
 10519 Wilbur Ave., Cleveland, Ohio.
 Portland Gold Mining Co., Victor, Colo.
- SHEDWICK, WM. J. JR. E. M. Beta '09
 618 W. 34th St., Philadelphia, Penn.
 Kennecott Mines Co., Kennecott, Alaska.
- SHEFFIELD, FRED W. C. E. Alpha '09
 209 Ash St., Crookston, Minn.
 Security Bridge Co., Minneapolis.
 Phi Gamma Delta.
- SHELDON, CHURCHILL GEAR Beta '10
 R. F. D. No. 2, Grand Rapids, Mich.
 Berlin, Mich., R. F. D. No. 1.

- SHEPARD, GEO. M. Alpha '09
 Kenyon, Minn.
 233 Federal Bldg., St. Paul.
 Sigma Chi, Tau Beta Pi.
- SHICK, HARVEY B. Student Beta '14
 La Porte, Ind.
- SIMPSON, JAMES FREDRIC B. S. E. M. Beta '09
 6157 Crescent Road, Chicago, Ill.
 Toluca Coal Co., Toluca, Ill.
 Kappa Sigma.
- SKAVLEM, H. G. E. M. Gamma '10
 Janesville, Wis.
 Mine Sup't. Hollinger Gold Mines, Ltd.,
 Timmins, Ont.
 Tau Beta Pii.
- SMITH, ALFRED LEGGATT B. S. E. M. Beta '06
 148 W. Lawrence St., Pontiac, Mich.
 Assis't. Sup't. Brotherton Mines, Sunday Lake,
 Box 394, Wakefield, Mich.
- SMITH, CLINTON B. E. E. Alpha '05
 646 E. 60th St. N. Portland, Oregon.
 E. E. Portland, Oregon.
- SMITH, GEORGE D. JR. B. S. Epsilon '11
 2601 Larkin St., San Francisco, Cal.
- SMITH, LYON Gamma '09
 1547 Beacon St., Brookline, Mass.
 Goldfield, Nev.
 Kappa Sigma.
- SNEVE, JACK STICKLEY M. E. Alpha '11
 142 Mississippi River Blvd., St. Paul.
 Cadillac Motor Car Co., Detroit, Mich.
 Chi Psi.
- SNYDER, EDWARD HARRISON Beta '11
 903 First Ave., Salt Lake City, Utah.
 Engr. Contr., Pioche, Nev.
 Tau Beta Pi.

- SPRING, WILLIS WARE Alpha '07
Buck & Spring, Duluth, Minn.
Phi Kappa Psi.
- STANTON, WOLCOTT P. Student Epsilon '12
2255 Vallejo St., San Francisco, Cal.
Delta Kappa Epsilon.
- STAPLES, CHEVALIER BAYARD Beta '08
Cranbrook, B. C.
Staples Lumber Co. Ltd., Wycliffe, B. C.
- STAPLES, CHARRON M. B. S. Epsilon '10
Ashland, Oregon.
Tau Beta Pi, Sigma Xi, Phi Beta Kappa.
- STARRETT, HOWARD M. Alpha '13
818 7th St. S. E. Minneapolis.
Sup't. Fairmont Mach. Co., Fairmont, Minn.
Phi Gamma Delta.
- STEIN, EARLE ROSCOE B. S. Delta '11
1500 Mars Ave., Lakewood, Ohio.
Chemist, Box 482, Midland, Mich.
- STEINBACH, HARRY PHILLIP B. S. E. M. Beta '08
L' Anse, Mich.
Sup't. Kinney Mine, Kinney, Mich.
- STILLWELL, EDWARD HERBERT B. S. E. M. Beta '11
163 Maybury Ave., Detroit, Mich.
Tau Beta Pi.
- STRAND, CARLYLE HENRY B. S. Delta '11
1327 E. 112th St., Cleveland, Ohio.
Ill. Steel Co., South Chicago, Ill.
Tau Beta Pi.
- STRONG, M. ROY Delta '12
9807 Gaylord Ave., Cleveland, Ohio.
Sigma Chi, Tau Beta Pi.
- STRONG, JOHN L. E. M. Alpha '08
1921 Dayton Ave., St. Paul, Minn.
Mining Engr. 608 Wolvin Bldg., Duluth,
Minn.

- SUMA, JOHN R. Student Epsilon '12
Hollywood, Cal.
Delta Upsilon, Tau Beta Pi.
- SWEENEY, WILFRED G. B. S. Beta '06
Baxter Springs, Kan.
Sweeney Mining & Engr. Co., Baxter Springs,
Kan.
- TAYLOR, EDWARD A. B. S. Delta '11
1549 Crawford Road, Cleveland, Ohio.
Engr. Chicos Mng. Co., Terlingua, Texas.
Tau Beta Pi.
- THIELICKE, CHARLES G. Beta '12
1323 South 31st Ave., Seattle, Wash.
Prospector, Chitina, Alaska.
- THOMAS, LESTER C. Student Gamma '12
1633 York St., Denver, Colo.
Beta Theta Pi.
- THOMS, JAMES E. E. M. Beta '08
Three Rivers, Mich.
Foreman U. S. Gypsum Co., Gypsum, Ohio.
- THOMSON, PERCY W. Student Epsilon '12
South Pasadena, Cal.
Tau Beta Pi, Sigma Xi.
- TICKELL, FRED G. Student Epsilon '12
1320 18th St., Sacramento, Cal.
Delta Tau Delta.
- TIMPERLY, WM. D. C. E. Alpha '10
1121 Univ. Ave. S. E., Minneapolis, Minn.
Barnett & Record Co., 700 Flour Exch., Min-
neapolis, Minn.
- TORBERT, JAMES B. B. S., E. M. Beta '07
Jersey Shore, Pa.
Cerro de Pasco Mining Co.
Cerro de Pasco, Peru.

- TORRANCE, ELIAKIN C. E. Alpha '09
 28 W. 66th St., Chicago, Ill.
 6530 Yale Ave., Chicago, Ill.
 Psi Upsilon.
- TREMBRATH, JAMES Beta '08
 537 Franklin St., Butte, Mont.
 Elk City, Idaho.
- TROPPMAN, GEORGE L. B. S. Delta '10
 4643 Gallup Ave., Cleveland, Ohio.
 Engr. A. S. & W. Co., Cleveland, Ohio.
- TURNER, HARRY M. Beta '11
 341 Houston Ave., Crookston, Minn.
- VAN HOUTEN, ED. A. Student Zeta '13
 615 West St., Topeka, Kansas.
 Phi Kappa Psi.
- VAN VALKENBURGH, RBT. R. Student Beta '12
 V. & W. Co., Wenatchee, Wash.
- VARNEY, FRED W. B. S., E. M. Beta '09
 350 E. S. Temple St., Salt Lake City, Utah.
 Apt. 3 Hda. de Loreto, Pachuca, Hdo. Mexico.
- VIAL, RUDOLPH R. B. S. Epsilon '11
 2601 Durant Ave., Berkeley, Cal.
 Delta Tau Delta.
- VICKERY, MELVILLE W. B. S. Delta '11
 1640 E. 84th St., Cleveland, Ohio.
 Cleveland Law School.
- VINAL, EDWIN L. Alpha '07
 New Bedford, Mass.
 211 Mehlhoen Bldg., Seattle, Wash.
- VORCK, CHAS. R. Student Alpha '14
 1120 Laurel Ave., Minneapolis, Minn.
- WAGNER, JOHN E. B. S., E. M. Beta '08
 Belding, Mich.
 Bodie, Cal.

- WAGNER, RALPH B. B. S., E. M. Beta '10
 Grand Rapids, Mich.
 Chief Engr. Superior & Boston Copper Co.,
 Globe, Ariz.
- WALKER STANLEY, M. Student Gamma '12
 1257 Broadway, Denver Colo.
 Beta Theta Pi.
- WALLING, BENJ. B. E. E. Alpha '09
 331 14th St., Minneapolis, Minn.
 Pres. University Store, Minneapolis, Minn.
- WALLIS, ROY C. B. S. Delta '10
 Res. Chem. care Dow Chemical Co., Box 266,
 Midland, Mich.
- WANVIG, CHESTER O. Beta '12
 404 Webster Place, Milwaukee, Wis.
 Wallace Smith Co., Milwaukee, Wis.
- WANVIG, JOHN D. B. S., E. M. Beta '08
 404 Webster Place, Milwaukee, Wis.
 Mining Engr., care Weef & Probert, 341 Cen-
 tral Bldg., Los Angeles, Cal.
 Tau Beta Pi.
- WARD, RICHARD B. Student Zeta '13
 Belleville, Kansas.
 Sigma Chi.
- WARREN, ALVAH H. JR. M. E. Alpha '08
 645 Fairmount Ave., St. Paul, Minn.
 Minnesota Steel Co., Duluth, Minn.
 Psi Upsilon.
- WASLEY, WM. A. E. Met. Gamma '09
 1018 13th St., Greeley, Colo.
 Miami Copper Co., Box 100, Miami, Ariz.
 Beta Theta Pi.
- WASSON, HAROLD J. Student Alpha '13
 La Porte City, Iowa.
 Sigma Alpha Epsilon.

- WATSON, G. P. E. M., E. Met. Gamma '10
 Greeley, Colo.
 Box 747, McGill, Nev.
 Beta Theta Pi.
- WELKER, GEORGE E. B. S., E. M. Beta '10
 112 Moran St., Oil City, Pa.
 Engr. United Fuel Gas Co., Charleston, W. Va.
- WELCKER, THEODORE J. Student Beta '12
 867 Third Ave., Salt Lake City, Utah.
 Tau Beta Pi.
- WEISEL, GEO. F. Alpha '07
 3113 3rd Ave. S., Minneapolis, Minn.
 Mgr. Mann Lumber Co., Henderson, Mont.
 Delta Upsilon.
- WENK, RALPH W. Beta '10
 712 Marinette Ave., Marinette, Wis.
 664 Benton Blvd., Los Angeles, Cal.
 Kappa Sigma.
- WENTZ, WALTER W. Alpha '14
 Elmore, Minn.
- WESBROOK, DONALD M. M. E. Alpha '10
 906 5th St. S. E., Minneapolis, Minn.
 Foreman, O. I. M. Co., Hibbing, Minn.
 Chi Psi, Tau Beta Pi, Sigma Psi.
- WEST, HAL R. Alpha '13
 2709 Irving Ave. S., Minneapolis, Minn.
 428 Plymouth Bldg., Minneapolis, Minn.
 Phi Delta Theta.
- WEST, J. R. E. M. Gamma '00
 1532 W. Park St., Colorado Springs, Colo.
 Parkersville, Kansas.
- WHEELER, WALTER H. E. M. Alpha '06
 1621 Park Ave., Minneapolis, Minn.
 Consulting Engr., 820 Palace Bldg., Minneapolis, Minn.
 Alpha Delta Phi.

- WIGGINS, RALPH R. Student Beta '14
Indiana, Pa.
WILCOX, ARTIMUS D. B. S. Epsilon '11
405 W. Park St., Portland, Oregon.
WILFLEY, GEO. Student Gamma '13
Denver, Colo.

Beta Theta Pi.

- WILKINSON, PAUL H. B. S. E. M. Beta '05
North Yakima, Wash. A. C. Wilkinson.
Shannon Copper Co., Clifton, Ariz.

- WILSON, HERBERT L. Student Zeta '12
Lyndon, Kansas.

- WILSON, FRANK L. Student Epsilon '12
2035 Hearst Ave., Berkeley, Cal.

- WING, HOMER W. Beta '08
538 W. Main St., Ionia, Mich.

- WODRICH, OSCAR F. C. E. Alpha '08
77 Spruce Place, Minneapolis, Minn.
Cedar Rapids Savings Bank, Cedar Rapids,
Iowa.

Sigma Chi.

- WORTLEY, RUSSEL B. Student Beta '12
Houghton, Mich.

- WRIGHT, H. H. M. E. Alpha '09
Farmington, Minn.
Iowa Central Ry., Farmington, Minn.

Zeta Psi.

RHOMBOHEDRONS.

- COSSAR, GEORGE C. Rhom '06
East Craig, Corstorphine, Scotland.

- DOUGLAS, THOMAS J. JR. B. S. Rhom '03
900 New Hampshire Ave., Los Angeles, Cal.
407 Grant Bldg., Los Angeles, Cal.

- MERRY, HENRY M. Rhom '07
205 Hawthorne Road, Baltimore, Md.

- YOUNG, J. W. Rhom '05
873 Summit Ave., Milwaukee, Wis.



